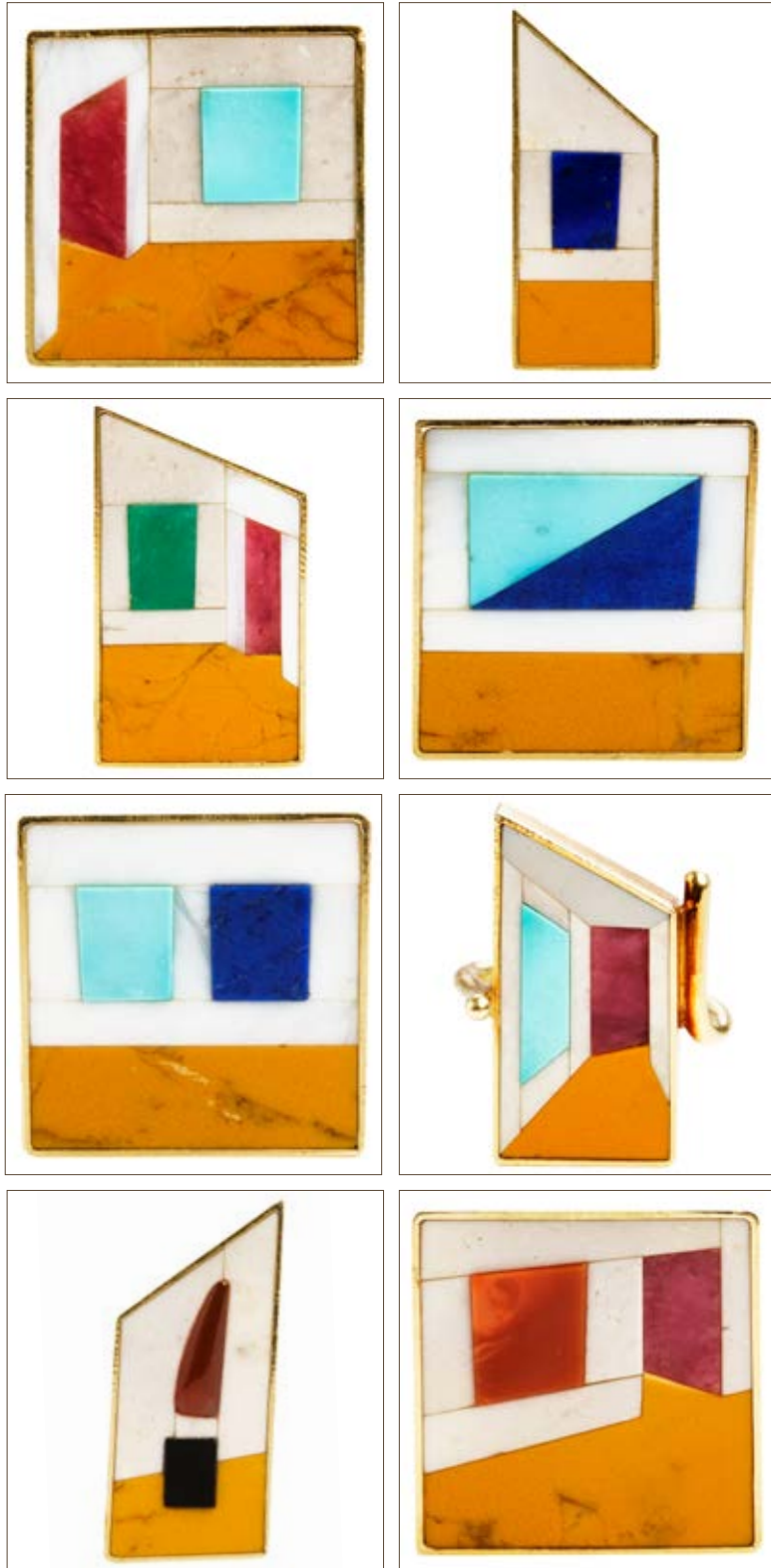


# THE ART OF LUXURY



BRUUN RASMUSSEN

# THE ART OF LUXURY



## LIVE AUCTION 922

Wednesday 18 September 3 pm

## PREVIEW

Thursday 12 September 11 am - 6 pm

Friday 13 September 11 am - 5 pm

Saturday 14 September 10 am - 4 pm

Sunday 15 September 10 am - 4 pm

or by appointment

## **BRUUN RASMUSSEN**

PART OF THE BONHAMS NETWORK

Nørgaardsvej 3 · DK-2800 Lyngby · Tel +45 8818 1111

info@bruun-rasmussen.dk · bruun-rasmussen.com





COME AND EXPERIENCE  
THE PREVIEW AND ART TALKS!

**Thursday 12 September 11 am–6 pm**

- 11 am The preview opens  
3–6 pm Bubbly and Music  
4 pm Opening talk: Kai Nielsen’s “Aarhuspigen”  
and the current exhibitions at Faaborg Museum  
and Glyptoteket  
*by curators Sofie Olesdatter Bastiansen and Anna Manly*

**Friday 13 September 11 am–5 pm**

- 3 pm Talk: “Highlights Under the Hammer”  
*by Kathrine Eriksen and Emma Bjørløw Møller, specialists in modern art*

**Saturday 14 September 10 am–4 pm**

- 12 am Talk: “Stories from Danske Bank’s  
former headquarters in Erichsen’s House”  
*by Bettina Sinnet Fornitz, Danske Bank’s art curator*  
1 pm Talk: “Force of Nature – Georg Jensen and Axel Salto”  
*by Amalie Hansen, specialist in modern decorative art*

**Sunday 15 September 10 am–4 pm**

- 1 pm Talk: “Highlights Under the Hammer”  
*by Sofie Normann Christensen, specialist in fine art*

Coffee from Amiga Coffee will be served by our barista on all the days

DAYS OF SALE

---

<b>Monday</b>	<b>16 September</b>		
	4 pm	House of Danske Bank - antiques, art and design	1 - 55
	7 pm	Fine art	56 - 136
<b>Tuesday</b>	<b>17 September</b>		
	3 pm	Antiques - decorative art, furniture and carpets	137 - 195
	6 pm	Modern art	
<b>Wednesday</b>	<b>18 September - The Art of Luxury</b>		
	3 pm	Handbags	401 - 411
		Jewellery	412 - 558
	7 pm	Wristwatches	559 - 633
<b>Thursday</b>	<b>19 September</b>		
	4 pm	Force of Nature - Georg Jensen and Axel Salto Modern decorative art Design	

---

IMPORTANT INFORMATION ABOUT BIDDING AT THE AUCTION  
Bonhams’ international customers can also bid at selected Bruun Rasmussen Live Auctions  
via Bonhams’ website: [bonhams.com](http://bonhams.com)

DEADLINE FOR CLAIMING ITEMS: WEDNESDAY 2 OCTOBER

Items bought at this auction must be paid no later than eight days from the date of the invoice and claimed at Nørgaardsvej 3 in Lyngby by Wednesday 2 October at the latest. Otherwise, they will be moved to Bruun Rasmussen’s storage facility at Paul Bergsøes Vej 16 in Glostrup at the buyer’s expense and risk. Here, they can be picked up from Friday 4 October. This transportation will cost DKK 150 per item VAT included, and storage will cost DKK 150 per item per week VAT included.



SPECIALISTS IN JEWELLERY, FASHION AND WATCHES



*Head of Department of Jewellery,  
Fashion and Watches*  
Daniel Foldschack  
+45 8818 1174  
dfo@bruun-rasmussen.dk



*Jewellery*  
Eva Dybkjær  
+45 8818 1227  
evd@bruun-rasmussen.dk



*Jewellery*  
Rie Kertsch Dalager  
+45 8818 1175  
rkd@bruun-rasmussen.dk



*Jewellery*  
Kristine Toftgaard Tanderup  
+45 8818 1237  
ktt@bruun-rasmussen.dk



*Jewellery*  
Rikke Palmø  
+45 8818 1171  
rp@bruun-rasmussen.dk



*Handbags and Fashion*  
Emma Marie Huus-Thomsen  
+45 8818 1179  
eht@bruun-rasmussen.dk



*Wristwatches*  
Frederik Plum  
+45 8818 1168  
fp@bruun-rasmussen.dk



*Wristwatches*  
Esben Skov Jensen  
+45 8818 1199  
ej@bruun-rasmussen.dk



*Director of Sales*  
Lea Gram Mikkelsen  
+45 8818 1023  
lgr@bruun-rasmussen.dk



*Representative France + Belgium*  
Ditte Herborg Krogh  
+33 6 6185 4564  
dhk@bruun-rasmussen.dk

HANDBAGS

Wednesday 18 September 3 pm

Lot 401 - 411







401

**401  
HERMÈS**

A "Birkin 30" bag of orange leather with palladium hardware, two handles, one compartment with two interior pockets and orange leather lining. Accompanied by padlock and two keys in clochette. H. 23 x W. 30 x D. 16 cm. 2010.

*DKK 30,000–35,000 / € 4,000–4,700*



402

**402  
HERMÈS**

A "Constance 24" bag of orange crocodile skin (Crocodylus porosus) with palladium hardware, a shoulder strap, two compartments with two interior pockets and orange leather lining. H. 18 x W. 24 x D. 6 cm. 2008.

*Accompanied by original box, dust bag, booklet and ribbon.*

*This lot is subject to CITES-appendix II and therefore requires a CITES export permit in order to be exported from Denmark to a country outside The European Union. Buyers residing outside the European Union are required to obtain this permit. Contact the department for further details.*

*DKK 50,000–60,000 / € 6,700–8,050*





403

CHANEL

A "Boy" bag of quilted denim with blue leather trimmings, ruthenium hardware, double chain strap, one exterior back pocket, one compartment with one interior pocket and black fabric lining. H. 16 x W. 25 x D. 9 cm. 2000-2002. Accompanied by card of authenticity from The Vintage Bar, Carte d'authenticité and non original dust bag.

DKK 18,000-20,000 / € 2,400-2,700



403



404

404

CHRISTIAN DIOR

A "Large Caro" bag of light and dark blue denim with floral print, gold tone hardware, adjustable shoulder strap, one exterior back pocket, one compartment with two interior pockets and denim lining. H. 19 x W. 31 x D. 10 cm. 2021. Accompanied by original dust bag, box and ribbon.

DKK 15,000-18,000 / € 2,000-2,400

405

LOUIS VUITTON

A "Capucines Mini" bag of Bleu Canard shiny alligator skin (Alligator Mississippiensis) with silver tone hardware, short handle, detachable and adjustable shoulder strap, two compartments with one interior pocket and turquoise leather lining. H. 14 x W. 21 x D. 8 cm. 2016. Accompanied by carrier bag and dust bag.

*This lot is subject to CITES-appendix II and therefore requires a CITES export permit in order to be exported from Denmark to a country outside The European Union. Buyers residing outside the European Union are required to obtain this permit. Contact the department for further details.*

DKK 35,000-40,000 / € 4,700-5,350



405



406

406

LOUIS VUITTON

A "Capucines Mini" bag of light blue, green and golden crocodile skin (Crocodile Porosus) with gold tone hardware, short handle, detachable and adjustable shoulder strap, two compartments with one interior pocket and grey leather lining. H. 13 x W. 20 x D. 8 cm. 2021.

Accompanied by carrier bag, dust bag and box.

*This lot is subject to CITES-appendix II and therefore requires a CITES export permit in order to be exported from Denmark to a country outside The European Union. Buyers residing outside the European Union are required to obtain this permit. Contact the department for further details.*

DKK 40,000-45,000 / € 5,350-6,050

407  
LOUIS VUITTON

A "Capucines Mini" bag of dark brown, green and golden alligator skin (*Alligator Mississippiensis*) with gold tone hardware, short handle, detachable and adjustable shoulder strap, two compartments with one interior pocket and dark brown leather lining. H. 13 x W. 20 x D. 8 cm. 2019.  
*Accompanied by carrier bag, dust bag and box.*

*This lot is subject to CITES-appendix II and therefore requires a CITES export permit in order to be exported from Denmark to a country outside The European Union. Buyers residing outside the European Union are required to obtain this permit. Contact the department for further details.*

*DKK 40,000–45,000 / € 5,350–6,050*



407

408  
CHRISTIAN DIOR

A "30 Montaigne Chain Bag" of dark green leather with gold tone hardware, one exterior back pocket, one compartment with two interior pockets and dark green leather lining. H. 16 x W. 25 x D. 8 cm. 2021.

*DKK 12,000–15,000 / € 1,600–2,000*



408

409  
LOUIS VUITTON

A Limited Edition "Twist PM" bag of light pink Epi leather with gold tone hardware, short chain strap, detachable strap, twist lock, one compartment with two interior pockets and light pink suede lining. H. 15 x W. 19 x D. 9 cm.

*Accompanied by carrier bag and box.*

*DKK 20,000–25,000 / € 2,700–3,350*



409



410

410  
CHANEL

A "Flap" bag of black quilted lamb skin with gold tone hardware, chain strap, one exterior back pocket, CC turn lock, one compartment with two interior pockets and burgundy leather lining. H. 14 x W. 23 x D. 7 cm.

*Accompanied by box. DKK 18,000–20,000 / € 2,400–2,700*





411

411

HERMÈS

A "Constance 24" bag of dark brown crocodile skin (Crocodile Porosus) with palladium hardware, shoulder strap, two compartments with two interior pockets and dark brown leather lining. H. 18.5 x W. 23 x D. 6 cm. 2008.

Accompanied by dust bag and box.

*This lot is subject to CITES-appendix II and therefore requires a CITES export permit in order to be exported from Denmark to a country outside The European Union. Buyers residing outside the European Union are required to obtain this permit. Contact the department for further details.*

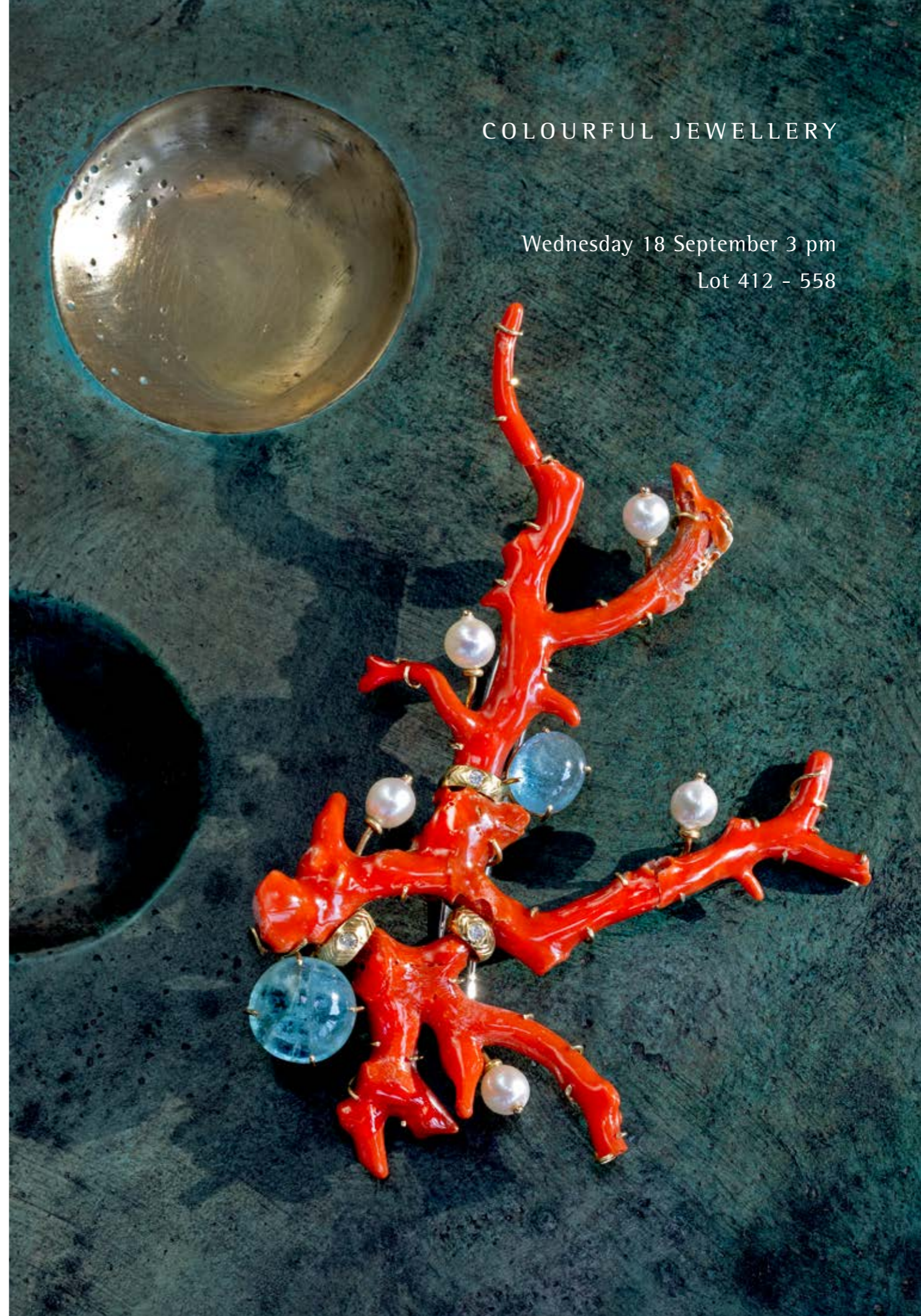
*DKK 70,000-90,000 / € 9,400-12,000*



COLOURFUL JEWELLERY

Wednesday 18 September 3 pm

Lot 412 - 558







412

412  
A sapphire and diamond brooch in the shape of a flower set with an oval-cut synthetic sapphire encircled by numerous old-cut and brilliant-cut diamonds weighing a total of app. 1.44 ct., mounted in 18k gold and white gold. Colour: I-J. Clarity: VS-SI. Weight app. 8.5 g. W. app. 2 cm. L. 5 cm. Accompanied by case. DKK 10,000–12,000 / € 1,350–1,600



413



413 \*  
A sapphire and diamond necklace set with a fancy-cut sapphire weighing app. 1.95 ct. encircled by numerous brilliant-cut diamonds weighing a total of app. 0.40 ct., mounted in 18k white gold. Colour: F-G. Clarity: VS-SI. Pendant L. 14 mm. L. 43 cm. DKK 10,000–12,000 / € 1,350–1,600



414

414 \*  
A pair of sapphire and diamond ear pendants each set with a pear-shaped sapphire weighing a total of app. 1.82 ct. encircled by numerous brilliant-cut diamonds weighing a total of app. 0.87 ct., mounted in 18k white gold. Colour: H-I. Clarity: VS-SI. L. 3.4 cm. (2) DKK 18,000–20,000 / € 2,400–2,700



415

415 \*  
A pair of sapphire and diamond ear studs each set with a pear-shaped sapphire weighing a total of app. 3.90 ct. and numerous brilliant-cut diamonds weighing a total of app. 0.61 ct., mounted in 14k white gold. Colour: H-I. Clarity: VS-SI. L. 14 mm. (2) DKK 12,000–15,000 / € 1,600–2,000



416

**416**  
A tanzanite, sapphire and diamond ring set with a modified cushion-cut tanzanite weighing app. 6.26 ct. encircled by numerous circular-cut sapphires weighing a total of app. 1.46 ct., two fancy-cut and numerous brilliant-cut diamonds weighing a total of app. 0.47 ct., mounted in 18k white gold. Colour: H. Clarity: VS-P. Weight app. 12 g. W. 20 mm. Size 55.5. *DKK 35,000–40,000 / € 4,700–5,350*



418

**418**  
A sapphire and diamond ring set with a modified cushion-cut sapphire weighing app. 4.60 ct. encircled by numerous brilliant-cut diamonds, mounted in 18k white gold. Colour: H-J. Clarity: VS-SI. W. 20 mm. Size 53.  
*Accompanied by certificate No. 33825 from Istituto gemmologico Nazionale, Rome.*  
*DKK 32,000–35,000 / € 4,300–4,700*



417

**417 \***  
A sapphire and diamond ring set with an oval-cut Ceylon sapphire weighing app. 4.05 ct. encircled by numerous brilliant-cut diamonds weighing a total of app. 0.62 ct., mounted in 14k white gold. Colour: H-J. Clarity: VS-SI. W. 16 mm. Size 51.  
*Accompanied by certificate no. 508 from Milan, 2024.*  
*DKK 35,000–40,000 / € 4,700–5,350*



419

**419**  
A sapphire and diamond ring set with a modified cushion-cut Ceylon sapphire weighing app. 2.07 ct. encircled by numerous brilliant-cut diamonds weighing a total of app. 0.41 ct., mounted in 18k white gold. Colour: F. Clarity: VS. Weight app. 3.5 g. W. 12 mm. Size 53.5.  
*DKK 22,000–25,000 / € 2,950–3,350*







420

A topaz pendant set with an emerald-cut topaz weighing app. 73.00 ct., mounted in 18k gold. Accompanied by a necklace of 18k gold. Weight in total app. 82 g. Pendant W. 22 mm. L. incl. eye-let 4.8 cm. Necklace L. 56 cm. (2) *The eye-let of the pendant is openable.*

*Accompanied by velvet pouch and certificate.*

*DKK 100,000–125,000 / € 13,500–17,000*



420



422

422

An aquamarine and diamond ring set with an emerald-cut aquamarine weighing app. 22.10 ct. flanked by numerous brilliant-cut and single-cut diamonds, mounted in 14k white gold. Weight app. 15 g. W. 20 mm. Size 49.

*DKK 15,000–18,000 / € 2,000–2,400*



423

A pair of aquamarine ear pendants each set with two pear-shaped aquamarines, a carved frosted rock crystal and numerous single-cut diamonds, mounted in platinum. Colour: G-H. Clarity: VS-P. Weight in total app. 18 g. L. 7.4 cm. (2)

*DKK 28,000–30,000 / € 3,750–4,000*



423



421

421

A wide topaz bangle set with two oval-cut and three emerald-cut topazes weighing a total of app. 51 ct., mounted in 18k gold. Weight app. 67 g. W. 3.3 cm. Inside diam. app. 6.1 cm.

*Accompanied by certificate.*

*DKK 50,000 / € 6,700*



424

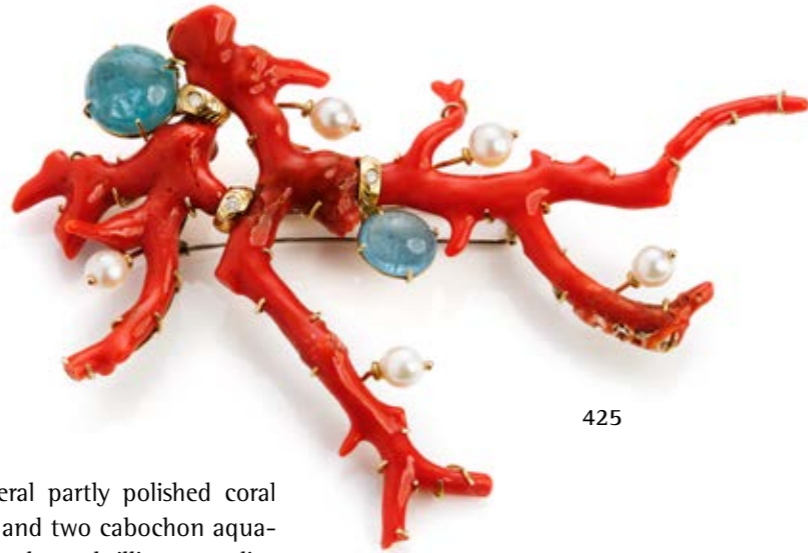


424

A turquoise and diamond ring set with a cabochon turquoise encircled by numerous brilliant-cut diamonds weighing a total of app. 1.65 ct., mounted in 14k white gold. Colour: H-K. Clarity: VVS-SI. Weight app. 8 g. Front 18 x 24 mm. Size app. 52.

*DKK 18,000–20,000 / € 2,400–2,700*





425

425  
A coral brooch set with several partly polished coral branches, five cultured pearls and two cabochon aquamarines flanked by a single and two brilliant-cut diamonds weighing a total of app. 0.075 ct., mounted in 18k gold. Colour: H. Clarity: SI-P. Weight app. 59 g. W. 8.5 cm. L. 13.5 cm.

*The pin is 18k white gold.*

*Accompanied by case.*

DKK 18,000–20,000 / € 2,400–2,700



426

426  
A pair of coral and onyx cufflinks each set with carved coral and cabochon onyx, mounted in 18k gold. Total weight app. 9.5 g. W. 2 cm. L. 3 cm. (2)

DKK 10,000–12,000 / € 1,350–1,600



427

427  
A pair of coral, sapphire and diamond ear studs each set with a polished coral encircled by numerous circular-cut sapphires and numerous single-cut diamonds, mounted in 9k rose and white gold. Colour: G-H. Clarity: VS-SI. Weight in total app. 14.5 g. W. 22 mm. L. 3 cm. (2)

DKK 12,000–15,000 / € 1,600–2,000



428

428  
An aquamarine ring set with an emerald-cut aquamarine weighing app. 15.85 ct., mounted in 14k rose gold. Weight app. 8 g. Front 16 x 19 mm. Size 56.

DKK 10,000–12,000 / € 1,350–1,600



429

429  
A citrine and diamond pendant in the shape of an isosceles cross set with five square-cut citrines weighing a total of app. 4.70 ct. and numerous brilliant-cut diamonds weighing a total of app. 0.10 ct., mounted in 18k gold. Weight app. 10.5 g. W. 27 mm.

DKK 15,000–20,000 / € 2,000–2,700



429





430 \*

A sapphire and diamond bracelet set with numerous circular-cut multi-coloured sapphires weighing a total of app. 3.21 ct. flanked by numerous brilliant-cut diamonds weighing a total of app. 2.02 ct., mounted in 18k rose gold. Colour: F-H. Clarity: VVS-SI. W. 6 mm. L. 19.2 cm.

DKK 40,000-45,000 / € 5,350-6,050



430



431

431 \*

A tourmaline, sapphire, tsavorite and diamond ring set with an oval-cut tourmaline weighing app. 6.71 ct. encircled by numerous circular-cut sapphires weighing app. 0.67 ct., circular-cut pink sapphires weighing app. 0.49 ct., circular-cut tsavorites weighing app. 0.24 ct. and brilliant-cut diamonds weighing app. 0.46 ct., mounted in 18k gold. Colour: I-J. Clarity: VVS-SI. Weight app. 7.5 g. W. 22 mm. Size 52. DKK 15,000-20,000 / € 2,000-2,700



432

An amethyst and tourmaline necklace set with numerous oval and fancy-cut amethysts and numerous circular-cut tourmalines, mounted in 18k rose gold. Weight app. 17.5 g. Pendant L. 3 cm. L. 43 cm. DKK 10,000-12,000 / € 1,350-1,600



432



433



433 \*

A tourmaline, sapphire and diamond ring set with an oval-cut pink tourmaline weighing app. 4.27 ct. encircled by numerous oval-cut pink sapphires weighing a total of app. 2.80 ct. and brilliant-cut diamonds weighing a total of app. 1.11 ct., mounted in 18k rose gold. Colour: G. Clarity: VS-P. Weight app. 12 g. Front 24 x 26 mm. Size 54.

DKK 25,000-30,000 / € 3,350-4,000





434

A ruby and diamond necklace set with numerous oval-cut rubies and numerous brilliant-cut diamonds weighing a total of app. 3.50 ct., mounted in 14k white gold. Colour: H-I. Clarity: VS-SI. Weight app. 22 g. W. 4 mm. L. 44 cm.

Accompanied by case. DKK 18,000-20,000 / € 2,400-2,700

434



437

437

A ruby and diamond bracelet set with numerous oval-cut rubies weighing a total of app. 4.73 ct. and numerous old mine-cut diamonds weighing a total of app. 6.03 ct., mounted in 18k gold. Colour: G-I. Clarity: VS-SI. W. app. 5.5 mm. L. 17.5 cm.

DKK 65,000-70,000 / € 8,700-9,400



435

435 \*

A ruby and diamond ring set with an oval-cut ruby weighing app. 1.83 ct. encircled by numerous brilliant-cut diamonds weighing a total of app. 0.45 ct., mounted in 14k white gold. Colour: H. Clarity: VS-SI. W. 16 mm. Size 54.5.

DKK 25,000-30,000 / € 3,350-4,000



436

436

A ruby and diamond ring set with an oval-cut ruby weighing app. 2.30 ct. encircled by numerous tapered baguette and brilliant-cut diamonds weighing a total of app. 1.00 ct., mounted in 18k white gold. Colour: H-J. Clarity: VS-SI. Weight app. 6 g. Front 15 x 18 mm. Size 53.5.

DKK 30,000-35,000 / € 4,000-4,700



438

438

A ruby and diamond ring set with numerous oval and round-cut rubies weighing a total of app. 0.73 ct encircled by numerous old mine-cut diamonds weighing a total of app. 1.00 ct., mounted in 18k gold. Size 54. DKK 15,000-18,000 / € 2,000-2,400







**439**  
 A ruby and diamond necklace set with numerous cabochon Burma rubies weighing a total of app. 41 ct. and numerous brilliant-cut diamonds weighing a total of app. 10.50 ct., mounted in 14k white gold. Colour: G-I. Clarity: VS-SI. Weight in total app. 68.5 g. L. 45 cm. (2)  
*The pendant is detachable and can be worn as a brooch.*  
*Accompanied by Gemmological Certification Services certificate no. 57766-5200. Stating "No indications of heating" and origin: Burma, 2016.*  
 DKK 325,000-350,000 / € 43,500-47,000

439



440

**440**  
 A ruby and diamond bracelet set with five Burma cabochon rubies weighing a total of app. 15 ct. and numerous brilliant-cut diamonds weighing a total of app. 2.59 ct., mounted in 14k white gold. Colour: H. Clarity: VS-SI. Weight app. 18.5 g. W. 8 mm. L. 18 cm.  
*Accompanied by Gemmological Certification Services certificate no. 5776-5198. Stating "No indications of heating" and origin: Burma, 2016.* DKK 70,000-80,000 / € 9,400-10,500

**441**  
 A spinel and diamond ring set with a square cushion mixed-cut Grayish Purple spinel weighing app. 5.91 ct. flanked by four marquise-cut diamonds weighing a total of 1.86 ct., mounted in 18k white gold. Colour: D-F. Clarity: VVS. Size 54.  
 DKK 45,000-50,000 / € 6,050-6,700



441



442

**442**  
 An emerald and diamond pendant set with a modified sugarloaf-cut emerald and numerous brilliant-cut diamonds weighing a total of app. 2.73 ct., mounted in platinum. Colour: H-I. Clarity: VS-SI. Weight app. 18.5 g. W. 25 mm. L. 4.8 cm.  
*The pendant can be detached from the hinge.*  
 DKK 90,000-100,000 / € 12,000-13,500



443



**443**  
 A pair of sapphire and diamond ear pendants each set with three carved sapphires weighing a total of app. 3.79 ct., four carved rubies weighing a total of app. 3.21 ct., a polished emerald drop and numerous carved emeralds weighing a total of app. 17.07 ct., black enamel and numerous brilliant-cut diamonds weighing a total of app. 0.79 ct., mounted in 18k white gold. Colour: F-H. Clarity: VS-SI. L. 4.5 cm. (2)  
 DKK 45,000-50,000 / € 6,050-6,700



**444 \***  
An emerald and diamond necklace set with a pear-shaped emerald weighing app. 1.60 ct. encircled by numerous brilliant-cut diamonds weighing a total of app. 0.39 ct., mounted in 18k white gold. Colour: G-I. Clarity: VS-SI. Weight app. 4.5 g. Pendant L. 17 mm. L. 42 cm.  
DKK 12,000–15,000 / € 1,600–2,000



444



447

**447**  
An emerald ring set with an emerald-cut emerald weighing app. 1.40 ct., mounted in 14k white gold. Weight app. 5 g. W. 9 mm. Size 54.  
Accompanied by case.  
DKK 20,000–25,000 / € 2,700–3,350



445

**445**  
An emerald and diamond ring set with an emerald weighing app. 4.15 ct. encircled by numerous brilliant-cut diamonds weighing a total of app. 0.70 ct., mounted in 18k white gold. Colour: F-H. Clarity: VVS-SI. Weight app. 4.5 g. W. 15 mm. Size 56.  
Accompanied by case and receipt no. 5096 and 45476.  
DKK 12,000–15,000 / € 1,600–2,000



446

**446 \***  
A pair of emerald and diamond ear studs each set with an oval-cut emerald weighing a total of app. 1.33 ct. encircled by numerous brilliant-cut diamonds weighing a total of app. 0.51 ct., mounted in 18k white gold. Colour: F-H. Clarity: VS-SI. Weight in total app. 4.0 g. L. 11 mm. (2)  
DKK 12,000–15,000 / € 1,600–2,000



448

**448 \***  
An emerald and diamond ring set with numerous carré and trapeze-cut emeralds weighing a total of app. 0.82 ct. encircled by numerous baguette and brilliant-cut diamonds weighing a total of app. 0.58 ct., mounted in 18k white gold. Colour: F-G. Clarity: VVS-VS. W. 11 mm. Size 53.5.  
DKK 15,000–18,000 / € 2,000–2,400







449



449

A graduated beryl necklace set with numerous pear-shaped green beryls weighing a total of app. 25.20 ct. flanked by numerous brilliant-cut diamonds weighing a total of app. 1.75 ct., mounted in platinum. Colour: F-H. Clarity: VS-SI. Weight app. 30 g. W. 6-8 mm. L. 42.5 cm.

*DKK 75,000-100,000 / € 10,000-13,500*



450

450

A graduated beryl and diamond bracelet set with numerous pear-shaped green beryls weighing a total of app. 9.75 ct. flanked by numerous brilliant-cut diamonds weighing a total of app. 0.80 ct., mounted in platinum. Colour: F-H. Clarity: VS-SI. Weight app. 12.5 g. W. 7 mm. L. 18.3 cm.

*DKK 35,000-40,000 / € 4,700-5,350*







451

A multi strand necklace of 23k gold. Weight app. 108 g. W. app. 13 mm. L. 43 cm.  
*Stamped 995.*

*DKK 40,000–50,000 / € 5,350–6,700*



451



452

452

An Italian bracelet of 18k gold with floral motif. Weight app. 61.5 g. W. 16–28 mm. L. 20.5 cm.  
*Accompanied by case.*

*DKK 25,000–30,000 / € 3,350–4,000*



453

453

A diamond bangle in the shape of a snake set with a marquise rose-cut diamond weighing app. 0.84 ct. and eyes each set with a brilliant-cut diamond weighing a total of app. 0.10 ct., mounted in 22k gold. Weight app. 110 g. Head W. 28 mm. Inside diam. app. 6 cm.

*DKK 55,000–60,000 / € 7,350–8,050*







454

**454**  
An openable diamond bangle set with numerous single-cut diamonds, mounted in 18k gold and white gold. Weight app. 40 g. W. 7-27 mm. Inside diam. app. 6.1 cm. L. 21 cm.

*Accompanied by case.*

*DKK 15,000-18,000 / € 2,000-2,400*



457

**457**  
A wide bracelet set with a belt buckle clasp of 18k gold. Weight app. 73 g. W. 23 mm. L. app. 19 cm.

*DKK 25,000-30,000 / € 3,350-4,000*



455

An Italian bracelet of 18k partly rusticated gold and white gold. Weight app. 61.5 g. W. 20 mm. L. 19 cm. *DKK 25,000-30,000 / € 3,350-4,000*



455



456

**456**  
A bracelet of 14k gold set with numerous charms e.g. set with onyx and jade, mounted in 14k and 18k gold. Weight in total app. 82.5 g. Charms incl. eye-lets app. L. 2.9-3.5 cm. L. 18.4 cm.

*DKK 20,000-25,000 / € 2,700-3,350*



458

458

A wide Italian bracelet of 18k partly matted tri-coloured gold with a star pattern. Weight app. 106 g. W. 3.2 cm. L. 22.5 cm. Circa 1970.

*DKK 40,000-45,000 / € 5,350-6,050*







459

**459**  
A gold bracelet with a beehive pattern of 18k gold, rose gold and 14k palladium white gold. Weight app. 66 g. W. 18 mm. L. 20 cm. The outer surface is chiseled with lines, making a shiny textured look. The white gold alloy is a lower karat to enhance the white colour. Palladium white gold is more precious than other white gold alloys.  
DKK 25,000–30,000 / € 3,350–4,000



460

**460**  
A flexible bracelet in the shape of a snake, eyes each set with a circular-cut garnet, mounted in 18k gold. Weight app. 72 g. W. 18-28 mm. Inside diam. app. 5.1 cm. Italy circa 1970's.  
DKK 25,000–30,000 / € 3,350–4,000

**461**  
A sapphire bracelet set with four circular-cut sapphires and three circular-cut pink sapphires, mounted in 18k gold and white gold. Weight app. 50.5 g. W. 14 mm. L. 17.2 cm.  
DKK 20,000–25,000 / € 2,700–3,350



461







462

462

A pair of diamond ear studs each set with a brilliant-cut diamond weighing a total of app. 2.02 ct. each encircled by numerous brilliant-cut diamonds weighing a total of app. 0.50 ct., mounted in 18k white gold. Colour: E-F. Clarity: P. Diam. app. 9.5 mm. (2)

*DKK 38,000–40,000 / € 5,100–5,350*



465

465

A diamond bracelet set with numerous brilliant-cut diamonds weighing a total of app. 4.04 ct., mounted in 18k white gold. Colour: F-H. Clarity: VS-P. W. 6.5 mm. L. 18 cm.

*DKK 40,000–45,000 / € 5,350–6,050*



463

463

A diamond curb bracelet set with numerous brilliant-cut diamonds weighing a total of app. 4.40 ct., mounted in 18k white gold. Colour: H-I. Clarity: VS-SI. Weight app. 38.5 g. W. 13 mm. L. 18.5 cm. *DKK 48,000–50,000 / € 6,450–6,700*

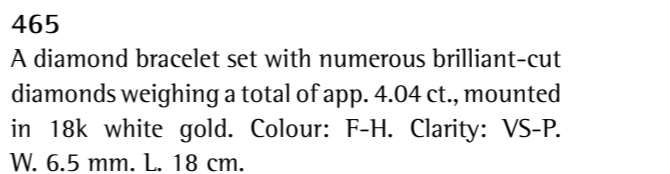


464

464

A flexible diamond ring set with numerous brilliant-cut diamonds weighing a total of app. 2.02 ct., mounted in 18k white gold. Colour: D. Clarity: VVS. W. 9 mm. Size app. 55.

*DKK 38,000–40,000 / € 5,100–5,350*



466 \*

A diamond bracelet set with numerous brilliant-cut diamonds weighing a total of app. 6.26 ct., mounted in 14k white gold. Colour: H-J. Clarity: VS-SI. Weight app. 23.5 g. W. 10 mm. L. 17.5 cm.

*DKK 60,000–70,000 / € 8,050–9,400*



466



467



467

A diamond ring set with a brilliant-cut diamond weighing 2.30 ct. flanked by numerous brilliant-cut diamonds weighing a total of app. 0.94 ct., mounted in 18k white gold. Colour: D-E. Clarity: VVS-SI1. Weight app. 6 g. W. 11 mm. Size 54.

*Accompanied by GIA certificate no. 6234004663.*

*DKK 175,000–200,000 / € 23,500–27,000*





**468**  
A diamond ring set with an old-cut diamond weighing app. 0.90 ct. encircled by numerous old-cut diamonds weighing a total of app. 2.00 ct., mounted in 18k gold. Colour: G-J. Clarity: SI-P. Weight app. 11 g. W. 15 mm. Size 53.  
DKK 30,000–35,000 / € 4,000–4,700



468



469

**469**  
A diamond ring set with a brilliant-cut diamond weighing 0.705 ct., mounted in 18k gold. Colour: D. Clarity: IF. Size app. 50.  
*Accompanied by case.*  
*Accompanied by AGSL certificate no. 104099413015.*  
  
*The diamond is graded as the highest on the scale, where according to AGSL it is '0' and 'River/Flawless' by GIA.*  
DKK 18,000–20,000 / € 2,400–2,700



**470**  
A diamond ring set with numerous old mine-cut diamonds weighing a total of app. 1.66 ct., mounted in 18k gold. Colour: H-L. Clarity: VS-SI. W. app. 12.5 mm. Size 54.  
DKK 18,000–20,000 / € 2,400–2,700



470



471

**471**  
A diamond ring set with numerous brilliant-cut diamonds weighing a total of app. 4.57 ct., mounted in 18k gold. Colour: H. Clarity: VVS. W. 10 mm. Size app. 56.  
DKK 32,000–35,000 / € 4,300–4,700



**472**  
A pair of diamond ear pendants each set with numerous marquise and baguette-cut diamonds weighing a total of app. 0.92 ct. encircled by numerous brilliant-cut diamonds weighing a total of app. 1.49 ct., mounted in 18k gold. Colour: F-H. Clarity: VS. L. 4 cm. (2)  
DKK 32,000–35,000 / € 4,300–4,700



472



473

**473**  
An eternity diamond ring set with numerous brilliant-cut diamonds weighing a total of app. 2.02 ct., mounted in 18k gold. Colour: H. Clarity: VVS. W. 3.3 mm. Size 56.  
DKK 18,000–20,000 / € 2,400–2,700



474

**474**  
A diamond ring set with numerous brilliant-cut diamonds weighing a total of app. 1.38 ct., mounted in 18k gold and white gold. Colour: H-I. Clarity: SI-P. Weight app. 19 g. W. 17 mm. Size 56.5.  
DKK 18,000–20,000 / € 2,400–2,700





475

**475**

A solitaire diamond ring set with a brilliant-cut diamond weighing app. 2.65 ct., mounted in platinum. Colour: J. Clarity: P1. Weight app. 12.5 g. W. 14 mm. Size 59. Circa 1985.

*Accompanied by case.*

*The ring and diamond is originally aquired in Japan.*

*DKK 60,000–80,000 / € 8,050–10,500*



476

**476**

A pair of diamond ear studs each set with numerous pear-shaped brilliant-cut diamonds weighing a total of app. 1.12 ct., mounted in 18k white gold. Colour: F-H. Clarity: VVS-VS. W. 10 mm. (2)

*DKK 15,000–18,000 / € 2,000–2,400*



**477**

A diamond ring set with a marquise-cut diamond weighing app. 1.06 ct. encircled by numerous brilliant-cut diamonds, mounted in 18k white gold. Colour: E-H. Clarity: VS-SI. W. 19 mm. Size 53.

*Accompanied by certificate no. 34643 from Instituto Gemmologico Nazionale, Rome.*

*DKK 45,000–50,000 / € 6,050–6,700*



477

**480 \***

A diamond necklace set with a pear modified brilliant-cut fancy brown-yellow diamond weighing 1.53 ct. encircled by numerous brilliant-cut diamonds weighing a total of app. 0.55 ct., mounted in 18k white gold. Colour: H-J. Clarity: VS-SI. Weight app. 4 g. L. 45 cm.

*Accompanied by GIA certificate no. 7406699734.*

*DKK 45,000–50,000 / € 6,050–6,700*



478

**478 \***

A diamond bracelet set with numerous brilliant-cut brown diamonds weighing a total of app. 3.46 ct., mounted in 18k rose gold. Clarity: VS-SI. Weight app. 8.5 g. W. 2.4 mm. L. 17.8 cm.

*DKK 20,000–25,000 / € 2,700–3,350*



479

**479**

A diamond ring set with a princess-cut light brown diamond weighing app. 3.01 ct. encircled by numerous brilliant-cut diamonds weighing a total of app. 0.98 ct., mounted in 14k white gold. Colour: H-I. Clarity: VS-P. Weight app. 10 g. W. 10 mm. Size 54.

*DKK 60,000–70,000 / € 8,050–9,400*



480





481

**481 \***

A diamond ring set with three oval brilliant-cut diamonds weighing a total of app. 4.52 ct., mounted in 18k white gold. Colour: J. Clarity: SI. Weight app. 4.1 g. W. 8 mm. Size 53.5.

Accompanied by GIA certificates no. 6461143905, 7476334072 and 7476406752 from 2023.

DKK 140,000–150,000 / € 19,000–20,000



**485**

A diamond ring set with an oval brilliant-cut diamond weighing 2.22 ct. encircled by numerous brilliant-cut diamonds, mounted in 14k white gold. Colour: H-K. Clarity: VS-SI2. W. 9 mm. Size 50.

Accompanied by GIA certificate no. 6272023109 for the center stone. DKK 50,000–60,000 / € 6,700–8,050



485

**482 \***

A diamond ring set with a Fancy Vivid Yellow diamond weighing 1.00 ct. encircled by numerous brilliant-cut diamonds weighing a total of app. 0.42 ct., mounted in 18k white gold. Colour: G-H. Clarity: VS-SI. Weight app. 4.5 g. W. 11 mm. Size 52.

Accompanied by GIA certificate no. 2121277727.

DKK 70,000–80,000 / € 9,400–10,500



482

**486 \***

A diamond necklace set with numerous brilliant-cut diamonds weighing a total of app. 3.08 ct., mounted in 18k white gold. Colour: E-F. Clarity: VS. L. 42.5 cm.

Accompanied by HRD jewellery report no. J240000024386.

DKK 35,000–40,000 / € 4,700–5,350



486



483

**483**

A diamond ring set with numerous brilliant- and princess-cut multi-coloured diamonds weighing a total of app. 4.52 ct., mounted in 18k gold. Clarity: VS-P2. Weight app. 22 g. W. 22 mm. Size app. 61.

DKK 40,000–50,000 / € 5,350–6,700



484

**484 \***

A diamond ring set with an oval modified brilliant-cut fancy dark brown-greenish diamond weighing 1.24 ct. encircled by numerous brilliant-cut diamonds weighing a total app. 0.32 ct., mounted in 14k white gold. Colour: H. Clarity: VS-SI1. W. 11 mm. Size 53.5.

Accompanied by GIA certificate no. 186842306.

DKK 35,000–40,000 / € 4,700–5,350



487

**487**

A diamond bracelet set with numerous brilliant-cut diamonds weighing a total of app. 7.22 ct., mounted in 18k white gold. Colour: G-H. Clarity: VVS-VS. Weight app. 12 g. W. 4 mm. L. 18 cm.

DKK 50,000–55,000 / € 6,700–7,350







488

**488**

A diamond ring set with numerous brilliant-cut diamonds weighing a total of app. 2.92 ct., mounted in 18k white gold. Colour: E. Clarity: VVS. Weight app. 8 g. W. 7 mm. Size 59.

*DKK 25,000–30,000 / € 3,350–4,000*



489

**489 \***

A pair of diamond ear pendants each set with numerous brilliant-cut diamonds weighing a total of app. 1.78 ct., mounted in 18k white gold. Colour: F-H. Clarity: VVS-SI. L. app. 3.7 cm. (2)

*DKK 18,000–20,000 / € 2,400–2,700*



490

**490**

A diamond necklace set with numerous brilliant-cut diamonds weighing a total of app. 10.00 ct., mounted in 18k white gold. Colour: G-I. Clarity: SI-P. L. 42 cm. Kojis, Harrods, circa 2005.

*Bought at 'Kojis Antique Jewellery Ltd.' Harrods, London circa 2005.*

*Accompanied by case and original receipt.*

*Insurance valuation £ 19,900.*

*DKK 45,000–50,000 / € 6,050–6,700*



491

**491 \***

A pair of diamond ear studs each set with numerous brilliant-cut diamonds weighing a total of app. 1.35 ct., mounted in 18k white gold. Colour: F-H. Clarity: SI. W. 10 mm. (2)

*DKK 15,000–18,000 / € 2,000–2,400*



**492**

A pair of diamond ear pendants each set with numerous brilliant-cut diamonds weighing a total of app. 2.73 ct., mounted in 18k white gold. Colour: H-J. Clarity: VS-SI. Total weight app. 6 g. L. 22 mm. (2)

*DKK 22,000–25,000 / € 2,950–3,350*



492



493

**493**

A diamond ring set with numerous brilliant-cut diamonds weighing a total of app. 2.90 ct., mounted in 18k white gold. Colour: G-H. Clarity: VS. Weight app. 21 g. W. 22 mm. Size 57.5. Milan, circa 2010.

*DKK 25,000–30,000 / € 3,350–4,000*







**494**  
**HARTMANN'S**  
 A diamond bracelet set with numerous brilliant-cut diamonds weighing a total of app. 11.05 ct., mounted in 18k white gold. Colour: F-G. Clarity: VVS. W. 4 mm. L. 18.3 cm.  
 Accompanied by case, a Hartmann's certificate no. 21847 and receipt no. 28205.  
 Insurance valuation DKK 345,000,-  
 DKK 80,000-100,000 / € 10,500-13,500



494



495

**495**  
 A diamond ring set with numerous single-cut diamonds weighing a total of app. 3.38 ct., mounted in 18k white gold. Colour: D-F. Clarity: VVS. W. 5 mm. Size 54.  
 DKK 38,000-40,000 / € 5,100-5,350



496

**496 \***  
 A diamond ring set with a princess-cut diamond weighing app. 1.52 ct., flanked by numerous brilliant-cut diamonds weighing a total of app. 0.41 ct., mounted in 18k white gold. Colour: F-J. Clarity: VS-SI2. Weight app. 3.2 g. W. 8 mm. Size 54.  
 Accompanied by a IGI certificate no. 629458797. May 2024.  
 DKK 50,000-60,000 / € 6,700-8,050



497

**497 \***  
 A pair of diamond ear studs each set with numerous fancy-cut diamonds weighing a total of app. 2.05 ct., mounted in 18k white gold. Colour: F-H. Clarity: VVS-VS. Weight in total app. 4.5 g. W. 10 mm. (2) DKK 18,000-20,000 / € 2,400-2,700



498

**498**  
 A diamond brooch in Art Deco style set with a marquise-cut diamond encircled by numerous baguette- and brilliant-cut diamonds weighing a total of app. 2.50 ct., mounted in platinum. Colour: F-M. Clarity: VS-SI. Weight app. 8 g. W. 19 mm. L. 5.4 cm. DKK 18,000-20,000 / € 2,400-2,700



499

**499**  
 A pair of Art Deco style diamond ear clips each set with numerous brilliant, square, baguette and single-cut diamonds weighing a total of app. 4.00 ct., mounted in platinum and 14k white gold. Colour: F-H. Clarity: VS-P. Weight in total app. 15.5 g. W. 3.3 cm. L. 1.7 cm. (2)  
 DKK 35,000-40,000 / € 4,700-5,350



500

**500**  
 A pair of diamond ear pendants each set with numerous brilliant-cut diamonds weighing a total of app. 0.62 ct., mounted in 14k white gold. Colour: H. Clarity: VS-SI. Total weight app. 16.5 g. L. 4 cm. (2) DKK 18,000-20,000 / € 2,400-2,700





501



501

A diamond brooch in the shape of a flower set with numerous brilliant-cut, old-cut and emerald-cut diamonds weighing a total of app. 14.00 ct., mounted in platinum. Colour: G-I. Clarity: VS-SI. Weight app. 43 g. Diam. app. 5 cm.

*DKK 90,000-100,000 / € 12,000-13,500*





502

502 \*

Two unmounted diamonds comprising a cut-cornered rectangular modified brilliant Natural Fancy Violet-Grey diamond weighing 0.18 ct. and a pear-shaped pink diamond weighing 0.35 ct. Pink diamond colour: 1PR. Clarity: P1. Violet diamond colour: Natural Fancy Violet-Grey. Clarity: VS2. (2)

Accompanied by GIA certificate no. 2215621818, IGI certificate no. 483192250 and authenticity document from Argyle Pink Diamonds.

DKK 450,000–500,000 / € 60,500–67,000







503

**503**  
A diamond brooch in the shape of a flower set with numerous old-cut diamonds weighing a total of app. 6.00 ct., mounted in silver and 14k gold. Colour: H-J. Clarity: VS-P. Weight app. 22.5 g. Diam. 3.9 cm. Circa 1880.

*DKK 18,000–20,000 / € 2,400–2,700*



504

**504**  
A sapphire and diamond brooch set with a cabochon star sapphire weighing 23.52 ct. flanked by numerous antique-cut diamonds, mounted in 14k gold. Weight app. 9.3 g. L. 4.5 cm.

*Accompanied by Gemmological Certification Services certificate no. 5784-0489. Stating "No indications of heating" and origin: "Ceylon" (Sri Lanka).*

*DKK 40,000–45,000 / € 5,350–6,050*

**505**  
An amethyst and diamond necklace set with an oval-cut and pear-shaped amethyst encircled by numerous old-cut and rose-cut diamonds, mounted in platinum and partly gilded silver. Colour: K-I. Clarity: VS-P. Pendant app. 5.9 x 7 cm. L. 50.5 cm.

*DKK 40,000–45,000 / € 5,350–6,050*



505



506

**506**  
An Art Deco diamond bracelet set with numerous old European-cut, baguette and single-cut diamonds weighing a total of app. 5.10 ct., mounted in platinum. Colour: E-M. Clarity: VVS-P. W. 11 mm. L. 18.5 cm. *DKK 30,000–40,000 / € 4,000–5,350*



507

**507**  
A pair of Art Deco style diamond ear pendants set with an old European-cut diamond weighing a total of app. 3.00 ct. each flanked by an old mine-cut diamond weighing a total of app. 0.06 ct., mounted in platinum and 14k gold. Colour: F-H. Colour: VS-P. W. 10 mm. L. app. 2.4 cm. (2)

*The ear pendants are mounted with an extra safety chain to be secured with a screw.*

*DKK 50,000–60,000 / € 6,700–8,050*

**508**  
An interchangeable diamond necklace which can be converted into two bracelets each set with numerous old-cut diamonds weighing a total of app. 9.14 ct., mounted in platinum and 18k white gold. Colour: H-K. Clarity: VS-P. Weight app. 31.5 g. L. 39.5 cm. (4)

*The necklace has been added with two lengthening sections made by goldsmith Nicolai Appel. The links have a modern look but integrates well with the older design. Each link is set with a brilliant-cut diamond, mounted in 18k white gold. Length in total app. 42.4 cm.*

*Accompanied by an appraisal from P. Hertz. Accompanied by a case from Nicolai Appel.*

*DKK 60,000–80,000 / € 8,050–10,500*



508







509

A ruby and diamond ring set with an unheated cushion-cut Burma ruby weighing app. 4.12 ct. encircled by numerous old-cut diamonds weighing a total of app. 2.76 ct., mounted in platinum and 18k gold. Colour: G-I. Clarity: SI-P. Size 55. Early 20th century. Accompanied by Gemmological Certification Services certificate no. 57840869. According to certificate "No indications of heating" and origin: Burma-Mogok 2023.

DKK 250,000-275,000 / € 33,500-37,000



509



510

510

An Art Deco diamond brooch set with numerous old-cut and single-cut diamonds weighing a total of app. 1.31 ct., mounted in 14k gold and platinum. Colour: H-I. Clarity: VS-SI. W. 11 mm. L. 3.7 cm.

DKK 10,000-15,000 / € 1,350-2,000



511

511

An Art Deco diamond brooch set with two old-cut, three brilliant- and numerous single-cut diamonds weighing a total of app. 1.54 ct., mounted in platinum. Colour: H-I. Clarity: VS-P1. Weight app. 8.5 g. W. 11 mm. L. 6.5 cm. Circa 1920s.

Accompanied by an insurance certificate from Poul Klarlund. DKK 10,000 / € 1,350



512

512

An emerald and diamond brooch set with three antique-cut emeralds flanked by eight old-cut diamonds weighing a total of app. 0.80 ct., mounted in platinum and 14k gold. Colour: E-I. Clarity: VS-P. Weight app. 7 g. W. 5 mm. L. 4.5 cm.

DKK 10,000-12,000 / € 1,350-1,600



513

513

A diamond, pearl, emerald and ruby bangle set with numerous rose-cut diamonds, five cultured pearls, four emerald-cut emeralds and numerous circular-cut rubies, mounted in 14k gold. Weight app. 41.5 g. W. 1-3.2 cm. Inside diam. app. 6.2 cm.

DKK 20,000-25,000 / € 2,700-3,350

514

A rare sash badge in the form of the Royal Portuguese "Order of Christ", cross-shaped pendant, set with 22 flat-cut garnets, in between as well as in the hinged rosette-formed suspension ring several old-cut diamonds, mounted in 9k and 18k gold and silver. Second half-18th century. H. 4.2 cm.

"The Order of Christ" is originally a Knight Templar order, which was founded in the early 14th century and approved by Pope John XXII in 1319. In 1550 the order was reconstituted in Portugal and associated with the Portuguese crown.

Provenance: Danish private ownership.

DKK 12,000-15,000 / € 1,600-2,000



514



515

515

A sapphire and diamond bracelet in the shape of a snake set with a pear-shaped faceted pink sapphire and eyes each set with an old-cut diamond, mounted in 14k gold. Weight app. 28.5 g. L. 18-20 cm.

Head and tail appears as massive gold. The snake's body is hollow with a woven pattern and very flexible.

DKK 12,000-15,000 / € 1,600-2,000





516

516

A diamond brooch set with a rose-cut diamond weighing app. 3.00 ct. encircled by numerous antique-cut diamonds, mounted in 18k rose gold. Colour: N. Clarity: P. Weight app. 17.2 g. W. 3.5 cm L. 5.8 cm. Circa 1880.

*The brooch has an eye-let and can be worn as a necklace. The reverse side has a detachable casing for a photo.*  
DKK 35,000 / € 4,700

517

A bracelet in Arabic historicist style with a flower motif set with numerous gemstones comprising cabochon turquoises, garnets, carnelians and glass stones, oval-cut amethysts, citrines and quartz, circular-cut emeralds and peridots and citrines, synthetic pink sapphires and a seed pearl, mounted in 14k gold, rose gold and silver, clasp set with carved carnelian with a motif of a seal. Weight app. 99.5 g. W. 4.5 cm. L. 18 cm. Late 19th century. Presumably made in the Ottoman Empire (Turkey).

DKK 18,000–20,000 / € 2,400–2,700



517



518

518

An agate case in black-brown shades, of flat form with downturned rim and rounded edges, mounted with a 14k gold frame and lock set with a cabochon presumably Burma ruby. Weight app. 110 g. Marked Paul Telge, Berlin. Early-20th century.

DKK 10,000–12,000 / € 1,350–1,600



519

519

A nephrite case, of flat form with downturned rim and rounded edges, mounted with a 14k gold frame and lock set with a cabochon presumably Burma ruby. Weight app. 104.5 g. Marked Paul Telge, Berlin. Early-20th century.

DKK 10,000–12,000 / € 1,350–1,600





520  
**BJÖRN WECKSTRÖM**

b. Helsinki 1935

A wide bracelet of 14k partly matted gold. Weight app. 67 g. W. 3.3 cm. Inside diam. 5.3 cm. L. 18.2 cm. 1972.

Accompanied by original suede case.

DKK 30,000–40,000 / € 4,000–5,350



520



521

521  
**CHAUMET**

A bangle with a polished and matted gold pattern, mounted in 18k gold. Weight app. 39 g. W. 6 mm. Inside diam. app. 6.4 cm.

DKK 15,000–20,000 / € 2,000–2,700

522  
**CARTIER**

A "Panthère" bangle of 18k tri-coloured gold and steel. Signed Cartier. Serial no. A7597. Weight app. 37 g. Diam. app. 6.5 cm. L. 21 cm.

Accompanied by original case.

DKK 35,000–40,000 / € 4,700–5,350



522



523

523  
**VAN CLEEF & ARPELS**

A "Rose De Noel" diamond brooch in the shape of a flower set with numerous brilliant-cut diamonds weighing a total of app. 0.86 ct., mounted in 18k gold. Colour: F-G. Clarity: VVS-SI. Weight app. 27.5 g. W. 6.8 cm.

DKK 50,000–60,000 / € 6,700–8,050



524

524  
**CARTIER**

An Art Deco diamond jewellery set comprising a pair of cufflinks, two pairs of larger studs and three smaller studs each set with an old-cut diamond encircled by mother of pearl, mounted in 14k gold and platinum. Total weight app. 21.5 g. W. 8-15 mm. L. 2.8-3.2 cm. Circa 1910. (9)

Accompanied by original case.

DKK 15,000–20,000 / € 2,000–2,700



525

525  
**BOUCHERON**

A "Quatre Black Edition" ring of 18k white gold and black PVD. Ref. no. JRG01789–58. Serial no. N63689. Size 58.

DKK 10,000–12,000 / € 1,350–1,600



526

526  
**CARTIER**

A "C Flat" diamond ring set with numerous brilliant-cut diamonds weighing a total of app. 0.20 ct., mounted in 18k white gold. Colour: E-G. Clarity: VVS-VS. Ref. no. CA6448. Size 52.

DKK 15,000–18,000 / € 2,000–2,400







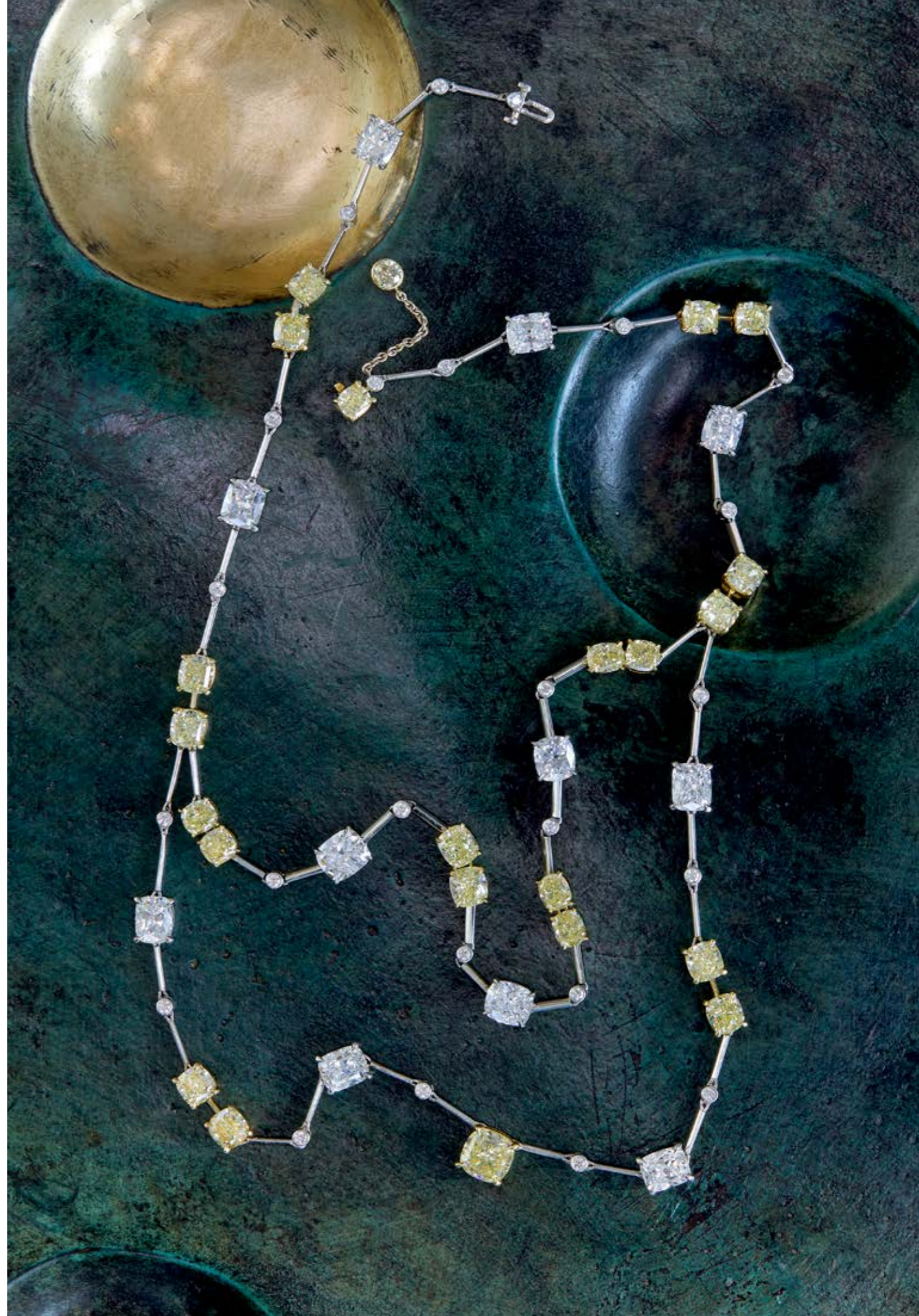
527

**BULGARI**

A diamond necklace set with numerous cushion and brilliant-cut fancy yellow and colourless diamonds weighing a total of app. 19.40 ct., mounted in platinum and 18k white gold. Colourless diamonds: G-H. Clarity: VS-SI. Weight app. 38 g. W. app. 3.5 cm. L. 38 cm.

*The yellow diamonds grade from Fancy Light Yellow to Fancy Yellow.*

*DKK 250,000-275,000 / € 33,500-37,000*







528

**GROSSE**

A graduated pearl necklace set with numerous white, light grey and peacock cultured pearls, mounted in 18k partly matted gold. Weight app. 118 g. W. 12-22 mm. L. app. 41 cm. Germany 1970.

*Accompanied by case.*

DKK 45,000-50,000 / € 6,050-6,700



528



529

529

**CARTIER**

A pair of "Maillon Panthere" cufflinks of 18k gold. Serial no. B95655. Total weight app. 16 g. W. 7 mm. L. 19 mm. (2)

*Accompanied by a jewellery pouch.*

DKK 12,000-15,000 / € 1,600-2,000



530

530

**CARTIER**

A pair of diamond ear clips each set with numerous brilliant-cut diamonds weighing a total of app. 3.00 ct., mounted in 18k gold. Colour: F-G. Clarity: VVS-VS. Serial no. 608176. Total weight app. 19.5 g. W. 12 mm. L. 24 mm. (2)

DKK 65,000-70,000 / € 8,700-9,400





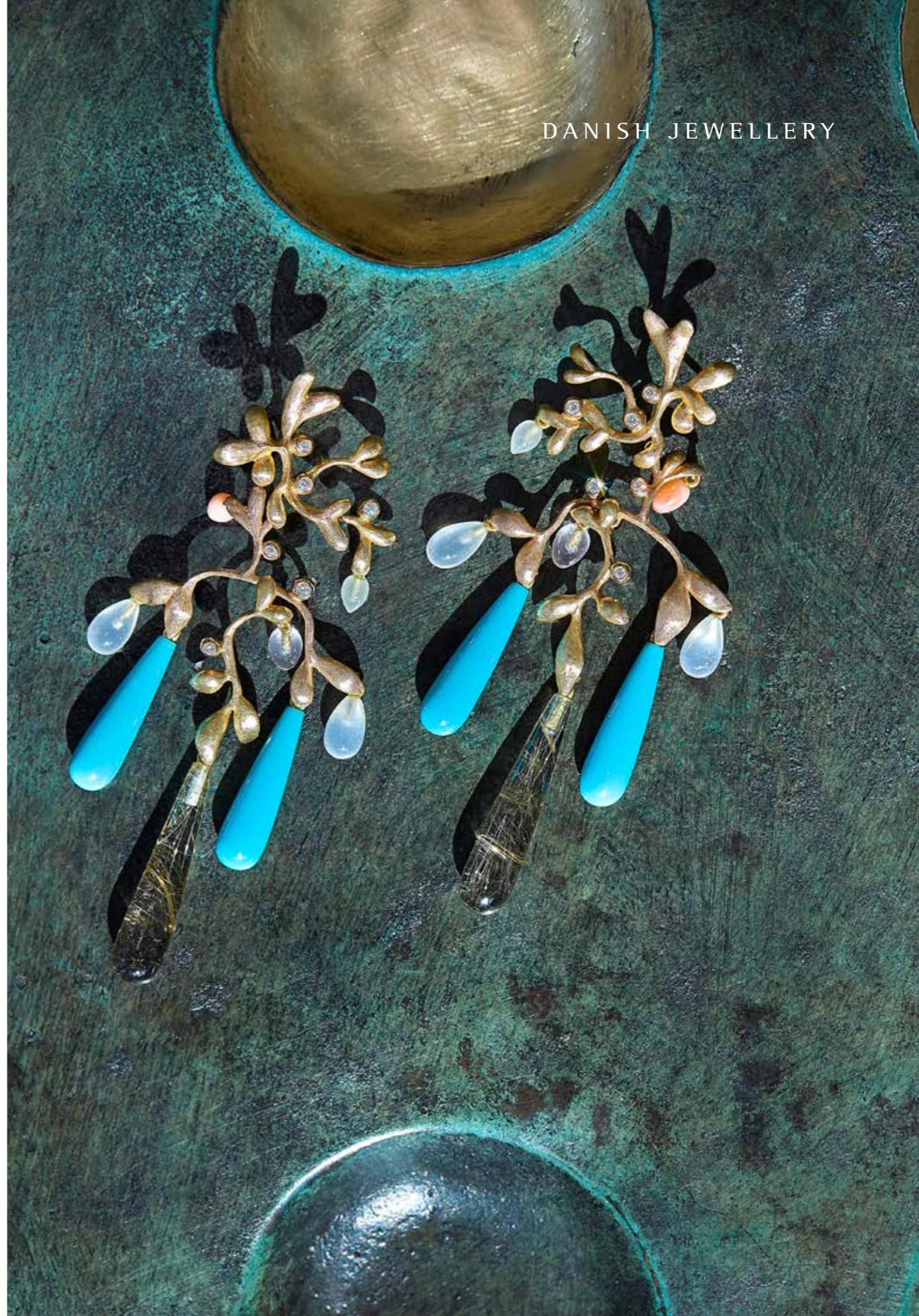
531

531  
**MARIO BUCCELLATI**  
A bracelet of 18k gold in the shape of numerous crescent-shaped hollow links with a silky surface. Weight app. 114 g. W. 24 mm. L. 20.7 cm.  
DKK 75,000–100,000 / € 10,000–13,500



532

532  
**MARINA B**  
Three rings respectively set with an oval-cut topaz, citrine and tourmalin, mounted in 18k gold and white gold. W. 10 mm. Size 54, 55 and 56.  
*Marina, a granddaughter to the founder of Bulgari, started her own brand and opened a showroom in Geneva, 1978.* DKK 50,000–55,000 / € 6,700–7,350







533

**533** <sup>ARR</sup>  
**JAN JØRGENSEN**  
 b. 1961  
 A diamond jewellery set comprising a necklace, a bracelet and a pair of ear pendants each set with numerous brilliant-cut diamonds weighing a total of app. 0.22 ct., mounted in 14k partly hammered tri-coloured gold. Colour: G. Clarity: VVS-VS. Weight in total app. 97.5 g. W. 4-5 mm. Necklace L. 43 cm. Bracelet L. 20.5 cm. Ear pendants L. 2 cm. (4)  
 Accompanied by an insurance valuation of DKK 260,000,- DKK 70,000-90,000 / € 9,400-12,000



534

**534**  
**A. HALBERSTADT**  
 A ruby and diamond ring set with an oval-cut ruby weighing app. 1.47 ct. encircled by numerous brilliant-cut diamonds, weighing a total of app. 1.05 ct., mounted in 14k gold. Colour: G. Clarity: VVS. Size 57.  
 Accompanied by original case and jewellery certificate from Halberstadt.  
 DKK 20,000-25,000 / € 2,700-3,350



535

**535**  
**NURAN**  
 b. Tyrkiet 1970  
 A diamond solitaire ring set with a brilliant-cut diamond weighing app. 3.28 ct., mounted in 14k gold. Colour: M. Clarity: SI1. Size app. 58.  
 Accompanied by Ruben Svart certificate no. 31012441583 and case.  
 Insurance value DKK 260,000.  
 DKK 80,000-100,000 / € 10,500-13,500



536

**536**  
**WILLY JUNGET**  
 A diamond ring set with numerous brilliant-cut diamonds weighing a total of app. 2.16 ct., mounted in 18k white gold. Colour: H-I. Clarity: VS. Weight app. 5.5 g. W. 17 mm. Size 55.  
 Accompanied by case.  
 Insurance valuation DKK 56,000.  
 DKK 18,000-20,000 / € 2,400-2,700



537

**537**  
 A sapphire and diamond ring set with a circular-cut sapphire weighing a total of app. 10.00 ct. encircled by numerous brilliant-cut diamonds weighing app. 0.48 ct., mounted in 14k white gold. Colour: F-H. Clarity: VS-SI. W. 20 mm. Size 56.  
 Accompanied by case.  
 DKK 20,000 / € 2,700



538

**538**  
**BOLOU**  
 An amethyst and diamond ring set with an oval-cut amethyst weighing app. 50.00 ct. encircled by numerous brilliant-cut diamonds, mounted in 18k white gold. Colour: F-H. Clarity: VS-P. Weight app. 24 g. W. 22 mm. Size 56.  
 Accompanied by a velvet pouch.  
 DKK 15,000-20,000 / € 2,000-2,700







539

**539<sup>ARR</sup>**  
**MARLENE JUHL-JØRGENSEN**

b. 1964

A diamond bracelet set with numerous brilliant-cut diamonds weighing a total of app. 9.33 ct., mounted in platinum. Colour: F-H. Clarity: VVS. Weight app. 60.5 g. W. app. 8.5 mm. L. 19 cm.

*Designed and made by Malene Juhl-Jørgensen.*

*Accompanied by original receipt and a case.*

*Retail price DKK 240,000.*

*DKK 80,000–100,000 / € 10,500–13,500*



540

**540**  
**OLE LYNGGAARD**

b. 1936

A "Lotus" onyx and diamond ring set with a cabochon onyx flanked by numerous brilliant-cut diamonds weighing a total of app. 0.05 ct., mounted in 18k white gold. Colour: F-G. Clarity: VS. Design by Charlotte Lynggaard. Size no. 3. Weight app. 13 g. W. 15 mm. Size 57.

*DKK 12,000–15,000 / € 1,600–2,000*



541

**541**  
**OLE LYNGGAARD**

b. 1936

A "Lotus" topaz and diamond ring set with a cabochon topaz flanked by numerous brilliant-cut diamonds weighing a total of app. 0.05 ct., mounted in 18k white gold. Colour: F-G. Clarity: VS. Design by Charlotte Lynggaard. Size no. 3. Weight app. 14 g. W. 16 mm. Size 56.

*DKK 15,000–18,000 / € 2,000–2,400*

**542<sup>ARR</sup>**

**HANDCRAFTED CPH**

A diamond ring set with a square emerald-cut diamond weighing app. 1.00 ct., mounted in 14 white gold. Colour: G. Clarity: VVS2. W. 6 mm. Size 50.

*Accompanied by case, GIA certificate no. 6217476071 and jewellery valuation from Ruben Svart.*

*Estimated insurance valuation DKK 106,000.*

*DKK 25,000–30,000 / € 3,350–4,000*



542



**543**  
**OLE LYNGGAARD**

b. 1936

A "Flower Basket" aquamarine and diamond ring set with an oval-cut aquamarine and three brilliant-cut diamonds weighing a total of app. 0.06 ct., mounted in 18k white gold. Colour: F-G. Clarity: VS. Design by Charlotte Lynggaard. Weight app. 11.5 g. W. 10 mm. Size 58.

*DKK 10,000–12,000 / € 1,350–1,600*



543



544

**544**  
**RUBEN SVART**

A diamond ring set with a brilliant-cut diamond weighing app. 3.00 ct. flanked by two brilliant-cut diamonds weighing a total of app. 1.26 ct., mounted in 14k gold. Colour: I-J. Clarity: VS-SI. Weight app. 7.5 g. W. 10 mm. Size 57.

*Accompanied by case.*

*DKK 100,000–125,000 / € 13,500–17,000*







**545**  
**OLE LYNGGAARD**  
b. 1936

A diamond necklace set with numerous brilliant-cut diamonds weighing a total of app. 0.11 ct., mounted in 14k gold and white gold. Weight app. 28 g. Pendant W. 10 mm. and L. 6.2 cm. L. 53 cm.  
*Accompanied by case.*

*DKK 30,000–35,000 / € 4,000–4,700*

545



**546**  
**OLE LYNGGAARD**  
b. 1936

A diamond bangle in the shape of a snake set with four brilliant-cut diamonds, mounted in 18k gold. Colour: G-H. Clarity: VS. Weight app. 23.5 g. W. 9.5 cm. L. app. 17 cm.

*DKK 25,000–30,000 / € 3,350–4,000*

546





**547 \***  
**NATASCHA TROLLE**

An emerald and diamond necklace set with a presumably Colombian oval-cut emerald, four pear-shaped Light Yellow diamonds and four diamonds weighing a total of app. 1.66 ct., mounted in 18k gold. L. 45 cm.

*DKK 40,000–45,000 / € 5,350–6,050*



547

**548 \***  
**NATASCHA TROLLE**

An emerald and diamond ring set with a presumably Colombian oval-cut emerald weighing app. 2.00 ct. flanked by two cushion-cut Light Yellow diamonds weighing a total of app. 0.18 ct., mounted in 18k gold. W. 8 mm. Size app. 56.

*The chain is handmade and the clasp is set with a rose and a brilliant-cut diamond.*

*DKK 15,000–20,000 / € 2,000–2,700*



548

**549**  
**GEORG JENSEN & WENDEL**

A tsavorite and diamond ring set with a tsavorite weighing app. 2.39 ct. flanked by numerous brilliant-cut diamonds weighing a total of app. 2.17 ct., mounted in 18k gold and white gold. Colour: H. Clarity: VVS-VS. Weight app. 9.5 g. Front 12 x 17 mm. Size 52.

*Accompanied by insurance valuation from Georg Jensen & Wendel 1992.*

*Estimated insurance valuation DKK 90,000.*

*The ring has been resized and therefore appears unmarked.* *DKK 15,000–20,000 / € 2,000–2,700*



549

**550**  
**GEORG JENSEN**

*b. Rådvaad 1866, d. Hellerup 1935*

A "Fusion" diamond bangle set with numerous brilliant-cut diamonds weighing a total of app. 1.30 ct., mounted in 18k tri coloured gold. Colour: F-G. Clarity: VS. Weight app. 46 g. W. 9 mm. Inside diam. app. 6 cm. Size M. Georg Jensen after 1945.

*Accompanied by receipt from 2014 and diamond declaration card from Georg Jensen.*

*Retail price DKK 95,000.*

*DKK 25,000–30,000 / € 3,350–4,000*



550



551

**551**  
**GEORG JENSEN & WENDEL**

A wide bangle of 18k gold with a chiseled surface. Weight app. 36 g. W. 3 cm. Inside diam. app. 6.1 cm.

*The bangle is hammered on the inside.*

*DKK 15,000–20,000 / € 2,000–2,700*

**552**  
**OLE LYNGGAARD**

*b. 1936*

A "Love" bracelet of 18k gold and rose gold. Weight app. 37.5 g. W. 11 mm. L. 20 cm.

*Accompanied by case.*

*DKK 20,000–25,000 / € 2,700–3,350*



552





553

**POVL KLARLUND**

A graduated puffed maritime necklace of 18k gold and white gold. Weight app. 82.5 g. W. 6.5-7.5 mm. L. 71.5 cm.

*The clasp has been exchanged and is 14k gold.*

*DKK 30,000 / € 4,000*



553



554

554<sup>ARR</sup>

**CHARLOTTE LYNNGGAARD**

b. 1966

A pair of special edition "Gipsy" ear pendants each set with polished drops of an aquamarine, a coral, a rose quartz, two moonstones, two turquoises and a rutile quartz flanked by numerous brilliant-cut diamonds weighing a total of app. 0.24 ct., mounted in 18k gold and rose gold. Colour: F-G. Clarity: VS. Weight in total app. 24 g. W. 2.4-3 cm. L. 8.3 cm. (2)

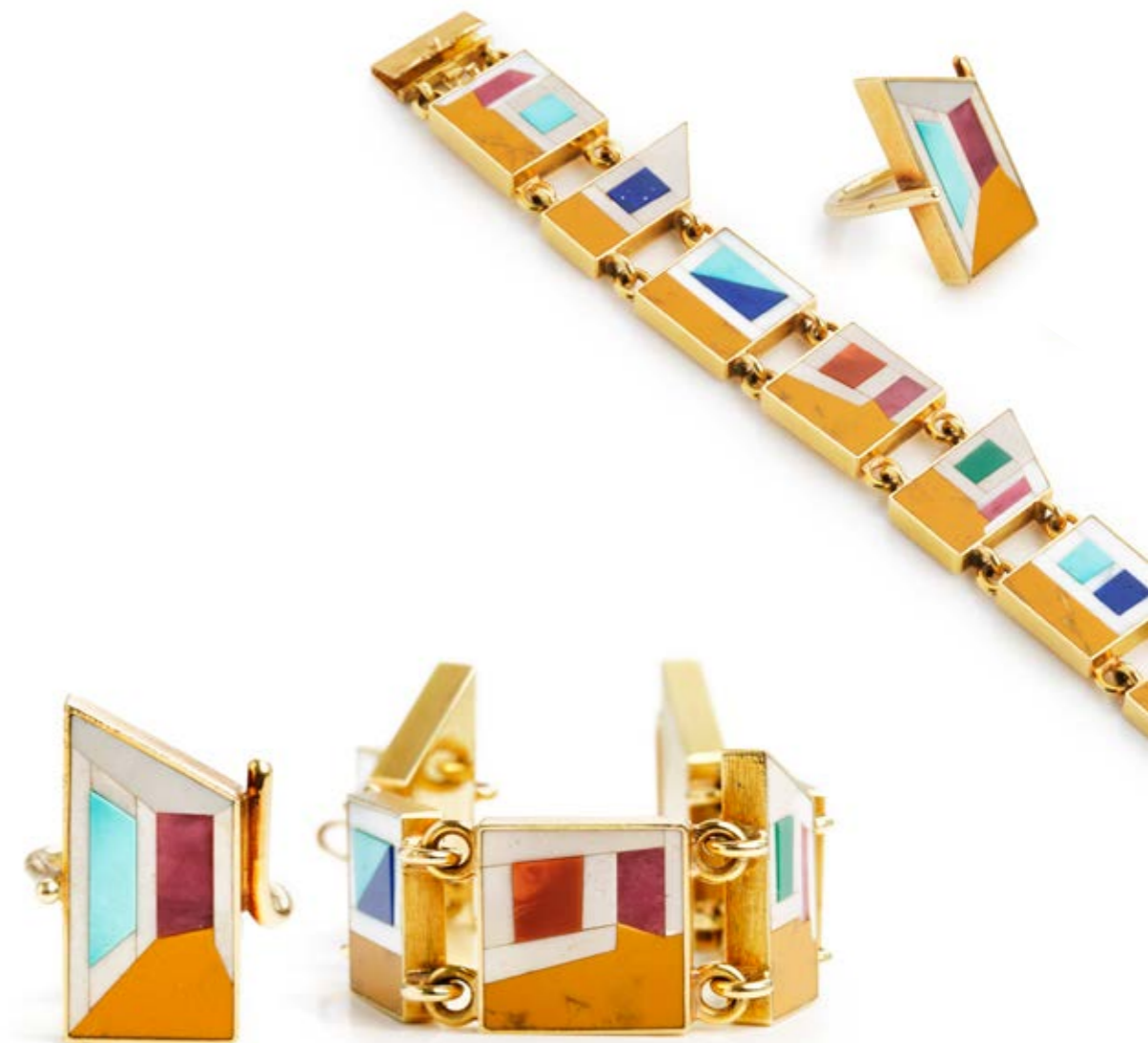
*Accompanied by original case and a copy of part of the receipt.*

*Retail price DKK 114,000.*

*DKK 50,000-60,000 / € 6,700-8,050*







555

555<sup>ARR</sup>

**OLE BENT PETERSEN**

b. 1938, d. 1998

A unique jewellery set comprising a bracelet and a ring set with numerous polished lapis lazuli, yellow jaspis, rhodonites, opals, flintstones and marble, mounted in 18k gold. Total weight app. 90.5 g. Bracelet W. 20-28 mm. L. 19.5 cm. Ring W. 28 mm. Size 49. 1984 (2)

*The bracelet is titled "Udstilling" (Exhibition) and the ring is titled "Mosaik" (Mosaic).*

*The jewellery set has been exhibited at The National Museum of of Modern Art in Tokyo in 1984 and at The Trapholt Museum in 1991 and at the City of Copenhagen exhibition hall at Nikolaj Square in 1992.*

*Accompanied by copy of original receipt, exhibition papers and cases.*

*The mosaic stones draw the imagination to for example houses, different rooms and perspective, and give the jewellery an architectural expression with a strong graphic character.*

*DKK 25,000–30,000 / € 3,350–4,000*



WRISTWATCHES

Wednesday 18 September 7 pm

Lot 559 - 633

556  
OLE LYNGGAARD

b. 1936

An amethyst clasp set with an oval-cut amethyst, mounted in 14k gold. Accompanied by a six strand necklace of 14k gold. Total weight app. 55 g. Clasp 2.6 x 3 cm. Necklace L. 46 cm. (2)  
DKK 25,000-30,000 / € 3,350-4,000



556



557

557  
OLE LYNGGAARD

b. 1936

A large "Flower" diamond clasp/brooch set with a brilliant-cut diamond weighing app. 0.08 ct., mounted in 14k gold and white gold. Colour: H. Clarity: VS. Design by Charlotte Lynggaard. Weight app. 15 g. Diam. 4 cm.

DKK 12,000-15,000 / € 1,600-2,000



558

558  
OLE LYNGGAARD

b. 1936

A special edition diamond bracelet set with three brilliant-cut diamonds weighing a total of app. 1.32 ct., mounted in 18k gold and matted white gold. Colour: F-G. Clarity: VVS1-VVS. Weight app. 49 g. W. 9-21 mm. L. 16.3 cm.

*The bracelet was made on special request and set with the clients own diamonds. The largest diamond is accompanied by an IGI certificate dated in 1985.*

*Accompanied by a jewellery pouch, diamond certificate no. F1H79671 from International Gemmological Institute and copy of receipt no. 002551 and 002552 from 1987 for purchase of respectively the bracelet and diamonds. DKK 30,000-40,000 / € 4,000-5,350*





559

ROLEX

Model: Submariner  
Reference: 116613LB  
Movement: Automatic, cal. 3135  
Material: 18k gold and steel  
Diameter: 41 mm  
Bracelet: "Oyster" bracelet of 18k gold and steel  
Circumference: App. 17.5 cm  
Year: 2023

Case no. 126613LB  
Caseback no. 2360  
Serial no. QC58593  
Movement no. P2332925  
Bracelet no. 97JA03  
Folding clasp no. 8UZ

Accompanied by Rolex box, manual and certificate from 2023.

This lot is being sold by the request of a lawyer, an insurance company or a public authority.

DKK 60,000–80,000 / € 8,050–10,500



559

561

ROLEX

Model: GMT-Master  
Reference: 1675  
Movement: Automatic, cal. 1570  
Material: Steel  
Diameter: 39 mm  
Bracelet: "Oyster" bracelet of steel  
Circumference: App. 18 cm  
Year: 1971

"Open 6/9" date wheel.

Case no. 1675  
Caseback no. 1675 III.70  
Serial no. 2880269  
Movement no. 932774  
Bracelet no. 93150  
Endlink no. 501B  
Folding clasp no. 62523H18

Accompanied by Rolex x Wempe box, "red back" bezel insert, two later hangtags, manual, service receipt from 2016 and purchase receipt from 2017.

This lot is being sold by the request of a lawyer, an insurance company or a public authority.

DKK 50,000–60,000 / € 6,700–8,050



561

560

ROLEX

Model: Datejust  
Reference: 116233  
Movement: Automatic, cal. 3135  
Material: 18k gold and steel  
Diameter: 36 mm  
Bracelet: "Oyster" bracelet of 18k gold and steel  
Circumference: App. 16.5 cm  
Year: 2004

Case no. 116233  
Caseback no. 2080  
Serial no. F511401  
Movement no. 0398254  
Link no. 72203

Accompanied by a Rolex box, manual and 2 extra links.

This lot is being sold by the request of a lawyer, an insurance company or a public authority.

DKK 40,000–60,000 / € 5,350–8,050



560

562

ROLEX

Model: GMT-Master II  
Reference: 16710  
Movement: Automatic, cal. 3185  
Material: Steel  
Diameter: 40 mm  
Bracelet: "Oyster" bracelet of steel  
Circumference: App. 18.5 cm  
Year: 2001

Case no. 16710  
Caseback no. 2180  
Serial no. K334483  
Movement no. 3 9303763  
Bracelet no. 78790A  
End link no. 801

Accompanied by Rolex box and chronometer certificate.

DKK 60,000–80,000 / € 8,050–10,500



562



563  
**CARTIER**  
 Model: Tank Américaine  
 Reference: 1734B  
 Movement: Manual, cal. 430  
 Material: Platinum  
 Diameter: 26.5 x 37 mm  
 Strap: Cartier alligator strap  
 Clasp: Cartier folding clasp of 18k white gold  
 Year: 1997

*Accompanied by Cartier wooden box, loupe, service receipt from Cartier 2022 and certificate from 1997.*

*The history of the Cartier Tank traces back to the early 20th century when Louis Cartier, inspired by the design of the Renault tanks during World War I, created the iconic tank watch in 1917. The Tank Americaine was introduced later in 1989, featuring a longer elongated case than its predecessor. Its distinctive silhouette captured the spirit of Art Deco, a design movement characterized by geometric shapes and streamlined forms.*

*The Cartier Tank Americaine in platinum is the pinnacle of luxury wristwatches, embodying the refinement and elegance that resonates with the Cartier brand. Its sleek, rectangular case with softened edges pays homage to the original Tank design while incorporating modern sophistication.*

*This lot is subject to CITES-appendix II and therefore requires a CITES export permit in order to be exported from Denmark to a country outside The European Union. Buyers residing outside the European Union are required to obtain this permit. Contact the department for further details.*

*DKK 80,000–100,000 / € 10,500–13,500*



564

564  
**CARTIER**  
 Model: Baignoire  
 Reference: 866044  
 Movement: Quartz, cal. 66  
 Material: 18k gold  
 Diameter: 23 x 31 mm  
 Strap: Crocodile strap  
 Buckle: C-type buckle of 18k gold  
 Year: 1991

*Accompanied by original box.*

*This lot is subject to CITES-appendix II and therefore requires a CITES export permit in order to be exported from Denmark to a country outside The European Union. Buyers residing outside the European Union are required to obtain this permit. Contact the department for further details.*

*DKK 30,000–40,000 / € 4,000–5,350*



563

565  
**CARTIER**  
 Model: Tank Solo XL  
 Reference: 3800  
 Movement: Automatic, cal. 1847 MC  
 Material: Steel  
 Diameter: 31 x 34 mm  
 Strap: Cartier crocodile strap  
 Clasp: Cartier folding clasp of steel  
 Year: 2010s

*Accompanied by Cartier box and manual.*

*This lot is subject to CITES-appendix II and therefore requires a CITES export permit in order to be exported from Denmark to a country outside The European Union. Buyers residing outside the European Union are required to obtain this permit. Contact the department for further details.*

*DKK 20,000–30,000 / € 2,700–4,000*



565

566  
**CARTIER**  
 Model: Santos Dumont  
 Reference: 2788  
 Movement: Quartz, cal. 690  
 Material: 18k rose gold  
 Diameter: 30 x 28 mm  
 Strap: Cartier alligator strap  
 Clasp: Cartier folding clasp of 18k rose gold  
 Year: 2013

*Accompanied by certificate from 2013.*

*This lot is subject to CITES-appendix II and therefore requires a CITES export permit in order to be exported from Denmark to a country outside The European Union. Buyers residing outside the European Union are required to obtain this permit. Contact the department for further details.*

*DKK 35,000–40,000 / € 4,700–5,350*



566







567

**567**  
**ULYSSE NARDIN**  
 Model: Marine Blue Max  
 Reference: 263-58  
 Movement: Automatic, cal. UN26  
 Material: Steel and titanium  
 Diameter: 40 mm  
 Strap: Ulysse Nardin rubber strap  
 Clasp: Ulysse Nardin folding clasp of titanium  
 Year: 2002

*Limited to 999 pieces. This watch is no. 789/999.*

*Accompanied by Ulysse Nardin box, blank certificate, chronometer certificate and manual.*

*This lot is being sold by the request of a lawyer, an insurance company or a public authority.*  
 DKK 15,000–20,000 / € 2,000–2,700



568

**568**  
**IWC**  
 Model: Ingenieur "AMG Black Series"  
 Reference: IW322504  
 Movement: Automatic, cal. 80110  
 Material: Ceramic  
 Diameter: 46 mm  
 Strap: IWC alligator and rubber strap  
 Buckle: IWC C-type buckle of titanium  
 Year: 2016

*Accompanied by IWC box, manual and certificate from 2016.*

*This lot is subject to CITES-appendix II and therefore requires a CITES export permit in order to be exported from Denmark to a country outside The European Union. Buyers residing outside the European Union are required to obtain this permit. Contact the department for further details.*

*DKK 25,000–30,000 / € 3,350–4,000*



569

**569**  
**ULYSSE NARDIN**  
 Model: Marine Diver Monaco Limited Edition  
 Reference: 263-93  
 Movement: Automatic, cal. UN26  
 Material: Rubber-coated steel  
 Diameter: 45 mm  
 Strap: Ulysse Nardin rubberstrap  
 Clasp: Ulysse Nardin folding clasp of titanium  
 Year: 2010s

*Limited to 100 pieces. This watch is no. 28/100.*

*DKK 20,000–30,000 / € 2,700–4,000*



570

**570**  
**ULYSSE NARDIN**  
 Model: Diver  
 Reference: 1183-170  
 Movement: Automatic, cal. UN118  
 Material: Titanium  
 Diameter: 44 mm  
 Strap: Ulysse Nardin rubber strap  
 Buckle: Ulysse Nardin titanium buckle  
 Year: 2020

*Accompanied by Ulysse Nardin box, hangtag, manual, Ulysse Nardin bracelet of titanium and certificate from Stenstrup 2020.*

*This lot is being sold by the request of a lawyer, an insurance company or a public authority.*

*DKK 20,000–30,000 / € 2,700–4,000*





571

571

**ROLEX**

Reference: 4431

Movement: Manual

Material: 18k gold

Diameter: 33 mm

Strap: Leather strap

Year: 1946

*Caseback no. 4431*

*Movement no. E 10179*

*Serial no. 388302*

*With Rolex' patented "Super Balance". Monogram on the caseback.*

*Accompanied by service receipt from 2019.*

*DKK 30,000–40,000 / € 4,000–5,350*



573

573

**MONTBLANC**

Model: Geosphere

Reference: MB119286

Movement: Automatic, cal. MB29.25

Material: Steel

Diameter: 43 mm

Strap: Leather strap

Buckle: C-type buckle of steel

Year: 2010s

*Accompanied by Montblanc box and document from a Montblanc laboratory test.*

*DKK 20,000–30,000 / € 2,700–4,000*



572

572

**GERALD GENTA**

Model: Retro

Reference: Ref. REC.L.10

Movement: Automatic

Material: Steel

Diameter: 37 mm

Strap: Gerald Genta crocodile strap

Buckle: Gerald Genta C-type buckle of steel

Year: 2004

*Accompanied by Gerald Genta box, certificate and manual.*

*This lot is subject to CITES-appendix II and therefore requires a CITES export permit in order to be exported from Denmark to a country outside The European Union. Buyers residing outside the European Union are required to obtain this permit. Contact the department for further details.*

*DKK 25,000–30,000 / € 3,350–4,000*



574

574

**CHANEL**

Model: J12

Reference: H1338

Movement: Quartz, cal. 956612

Material: Steel and ceramic

Diameter: 34 mm

Bracelet: Chanel bracelet of steel and ceramic

Circumference: app. 17 cm

Year: 2000s

*The bezel and bracelet are set with numerous brilliant-cut diamonds.*

*Accompanied by Klarlund pouch.*

*DKK 20,000–25,000 / € 2,700–3,350*





575

**575**  
**OMEGA**  
Model: Constellation  
Reference: 12355272055001  
Movement: Automatic, cal. 8521  
Material: 18k gold  
Diameter: 27 mm  
Bracelet: Omega bracelet of 18k gold  
Circumference: App. 16.5 cm  
Year: 2013

*Bezel set with numerous brilliant-cut diamonds. Dial set with numerous single-cut diamonds.*

*DKK 60,000–80,000 / € 8,050–10,500*



577

**577**  
**OMEGA**  
Model: Constellation  
Reference: 895.1001  
Movement: Automatic, cal. 1376  
Material: 18k gold  
Diameter: 24 mm  
Bracelet: Omega bracelet of 18k gold  
Circumference: App. 15.5 cm  
Year: 2010s

*Bezel set with numerous brilliant-cut diamonds. Dial set with numerous single-cut diamonds.*

*Accompanied by Omega box and manual.*

*DKK 50,000–60,000 / € 6,700–8,050*



576

**576**  
**VAN CLEEF & ARPELS**  
Model: Classique  
Reference: 13607  
Movement: Quartz  
Material: 18k gold  
Diameter: 24.5 mm  
Bracelet: Van Cleef & Arpels bracelet of 18k gold  
Circumference: App. 15 cm  
Year: 2000s

*Dial set with numerous single-cut diamonds. Bezel and bracelet set with numerous brilliant-cut diamonds.*

*Accompanied by later box.*

*DKK 40,000–60,000 / € 5,350–8,050*



578

**578**  
**HERMÈS**  
Model: Clipper  
Reference: CL4.285  
Movement: Quartz, cal. 956112  
Material: 18k gold  
Diameter: 24 mm  
Bracelet: Hermès bracelet of 18k gold  
Circumference: App. 15.5 cm  
Year: 2010s

*Accompanied by Hermès box.*

*DKK 35,000–40,000 / € 4,700–5,350*



579

PATEK PHILIPPE

Model: Nautilus

Reference: 3800

Movement: Automatic, cal. 330/294

Material: Steel

Diameter: 37.5 mm

Bracelet: Patek Philippe bracelet of steel

Circumference: App. 16.5 cm

Year: 1980s

DKK 200,000–300,000 / € 27,000–40,000



579



580

AUDEMARS PIGUET

Model: "Ultra-thin"

Movement: Manual, cal. 2003/1

Material: 18k gold

Diameter: 31 mm

Strap: Crocodile strap

Buckle: C-type buckle of gold-plated steel

Year: 1950s

*This lot is subject to CITES-appendix II and therefore requires a CITES export permit in order to be exported from Denmark to a country outside The European Union. Buyers residing outside the European Union are required to obtain this permit. Contact the department for further details.*

DKK 25,000–30,000 / € 3,350–4,000



580

581

AUDEMARS PIGUET

Model: "VZSS"

Movement: Manual, cal. VZSS

Material: 18k gold

Diameter: 35 mm

Strap: Audemars Piguet crocodile strap

Buckle: C-type buckle of 18k gold

Year: 1960s

*Movement no. 72981*

*This lot is subject to CITES-appendix II and therefore requires a CITES export permit in order to be exported from Denmark to a country outside The European Union. Buyers residing outside the European Union are required to obtain this permit. Contact the department for further details.*

DKK 20,000–30,000 / € 2,700–4,000



581







582

**582**  
**PIAGET**  
 Reference: 9795A6  
 Movement: Manual, cal. 9P2  
 Material: 18k gold  
 Diameter: 30 x 33 mm  
 Bracelet: Integrated bracelet of 18k gold  
 Circumference: App. 17 cm  
 Year: 1970s

*Bezel set with numerous single-cut diamonds.*

*Accompanied by box.*

*Provenance: Uffe Ellemann-Jensen (1941-2022),  
 former Minister of Foreign Affairs in Denmark.  
 DKK 30,000-40,000 / € 4,000-5,350*



584

**584**  
**OMEGA**  
 Model: Seamaster Aqua Terra  
 Reference: 23150342001001  
 Movement: Automatic, cal. 8521  
 Material: 18k gold  
 Diameter: 34 mm  
 Bracelet: Omega bracelet of 18k gold  
 Circumference: App. 16.5 cm  
 Year: 2010s

*Accompanied by Omega box, manual, pictogram card  
 and undated certificate.*

*DKK 70,000-80,000 / € 9,400-10,500*

**583**  
**ROLEX**  
 Model: Day-Date  
 Reference: 18038  
 Movement: Automatic, cal. 3055  
 Material: 18k gold  
 Diameter: 36 mm  
 Bracelet: "President" bracelet of 18k gold  
 Circumference: App. 17 cm  
 Year: 1986

*Dial set with numerous baguette- and single-cut  
 diamonds.*

*Case no. 18038  
 Caseback no. 18000  
 Serial no. 9330732  
 Movement no. 1502938  
 Endlink no. 55  
 Folding clasp no. 8385*

*Accompanied by Rolex box, Rolex notebook and  
 manual. DKK 70,000-80,000 / € 9,400-10,500*



583







585

**585**  
**I W C**  
Model: Aquatimer  
Reference: IW329003  
Movement: Automatic, cal. C.30120  
Material: Steel  
Diameter: 44 mm  
Strap: IWC rubber strap  
Clasp: IWC C-type buckle of steel  
Year: 2019

*Accompanied by IWC box, manual and certificate from 2019.*

*This lot is being sold by the request of a lawyer, an insurance company or a public authority.  
DKK 20,000–30,000 / € 2,700–4,000*



587

**587**  
**I W C**  
Model: Portugieser Perpetual Calendar  
Reference: IW502111  
Movement: Automatic, cal. 50611  
Material: Platinum  
Diameter: 44 mm  
Strap: IWC alligator strap  
Clasp: IWC folding clasp of platinum  
Year: 2006

*This model is limited to 250 pieces.*

*Accompanied by IWC box, manuals, polishing cloth, movement part for the calendar, purchase receipt from 2018 and certificate from 2006.*

*This lot is subject to CITES-appendix II and therefore requires a CITES export permit in order to be exported from Denmark to a country outside The European Union. Buyers residing outside the European Union are required to obtain this permit. Contact the department for further details.*

*DKK 100,000–150,000 / € 13,500–20,000*



586

**586**  
**J A E G E R - L E C O U L T R E**  
Model: Master Control Calendar  
Reference: Q1558420  
Movement: Automatic, cal. 866  
Material: Steel  
Diameter: 39 mm  
Strap: Jaeger-LeCoultre alligator strap  
Clasp: Jaeger-LeCoultre folding clasp of steel  
Year: 2014

*Accompanied by a Jaeger-LeCoultre box, buyer's receipt from Ole Mathiesen and certificate from 2014.*

*This lot is subject to CITES-appendix II and therefore requires a CITES export permit in order to be exported from Denmark to a country outside The European Union. Buyers residing outside the European Union are required to obtain this permit. Contact the department for further details.*

*DKK 40,000–50,000 / € 5,350–6,700*



588

**588**  
**O M E G A**  
Model: Speedmaster "Dark Side of the Moon"  
Reference: 31192445101006  
Movement: Automatic chronograph, cal. 9300  
Material: Ceramic  
Diameter: 44 mm  
Strap: Omega suede strap  
Clasp: Omega folding clasp of titanium and ceramic  
Year: 2016

*Accompanied by Omega box, manual, pictogram card, purchase receipt from Klaus Rygaard 2016 and certificate from 2016.*

*DKK 40,000–50,000 / € 5,350–6,700*



589

**DANIEL EKEGREN**

Pocket watch of 18k gold. Double-wheel duplex escapement, diamond end stone, split bimetallic balance. White enamel dial with black roman numerals and gold hands. Dial signed "Daniel Ekegren Kiöbenhavn". Case made by L. Steinmetz (no. 332) in Copenhagen. Dust cap of gilt brass with the following inscription: "Daniel Ekegren, No. 32, Kiöbenhavn & Dobbeltjulsgang, 4 steenhuller og compensationsuro". Winding and setting through the dust cap. Movement with the following inscription: "Daniel Ekegren, No. 32 & Kiöbenhavn". Very rare and special movement - especially the stud holder and the shape of the bridges are noteworthy. This type of movement is mostly seen in Danish watches - the Swedish can be somewhat similar. Escape wheels of brass and steel. The watch measures 61.5 mm. 1930s.

*Accompanied by an original box from Urban Jürgensens Sønner, Dronningens Tvergade 277. The watch may possibly have been sold there.*

*Daniel Ekegren (1795-1878) was apprenticed with his father in Landskrona, Sweden. In 1821 he became a master watchmaker in Copenhagen af having served as a journeyman in Urban Jürgensen's workshop. Litterature: Ingvordsen, Jens: Urmagere i Danmark før år 1900. DKK 20,000-30,000 / € 2,700-4,000*



589



590

590

**ROLEX**

Model: Cellini  
Reference: 3756  
Movement: Manual, cal. 1600  
Material: 18k gold  
Diameter: 33 x 31 mm  
Bracelet: Integrated bracelet of 18k gold  
Circumference: App. 18.5 cm  
Year: 1970s

*Accompanied by Rolex box.*

*DKK 30,000-40,000 / € 4,000-5,350*



591

591

**PATEK PHILIPPE**

Model: Ellipse  
Reference: 4826/22  
Movement: Manual, cal. 16-250  
Material: 18k gold  
Diameter: 23 x 28 mm  
Bracelet: Integrated bracelet of 18k gold  
Circumference: App. 16.5 cm  
Year: 2000s *DKK 20,000-25,000 / € 2,700-3,350*





592

**592**  
**OMEGA**  
 Model: Flightmaster  
 Reference: 145.013  
 Movement: Manual chronograph, cal. 910  
 Material: Steel  
 Diameter: 43 mm  
 Bracelet: Omega bracelet of steel  
 Circumference: App. 18 cm  
 Year: 1969     DKK 25,000–30,000 / € 3,350–4,000

**593**  
**IWC**  
 Model: Aquatimer  
 Reference: IW356802  
 Movement: Automatic, cal. 30110  
 Material: Steel  
 Diameter: 44 mm  
 Strap: Rubber strap  
 Buckle: C-type buckle of steel  
 Year: 2012

*Accompanied by IWC box, manual and certificate from 2012.*     DKK 25,000–30,000 / € 3,350–4,000



593

*Accompanied by Rolex box, manual, hangtag, two additional links and certificate from Bucherer 2020.*  
 DKK 100,000–130,000 / € 13,500–17,500



594

**594**  
**ROLEX**  
 Model: Milgauss  
 Reference: 1019  
 Movement: Automatic, cal. 1580  
 Material: Steel  
 Diameter: 37.5 mm  
 Bracelet: "Oyster" bracelet of steel  
 Circumference: App. 19.5 cm  
 Year: 1967

*Case no. 1019  
 Caseback no. 1019 II.67  
 Serial no. 1615825  
 Movement no. M023397  
 Bracelet no. 7836  
 Endlink no. 380  
 Folding clasp no. 3 72*  
 DKK 120,000–150,000 / € 16,000–20,000

**595**  
**ROLEX**  
 Model: Submariner "Hulk"  
 Reference: 116610LV  
 Movement: Automatic, cal. 3135  
 Material: Steel  
 Diameter: 41 mm  
 Bracelet: "Oyster" bracelet of steel  
 Circumference: App. 18 cm  
 Year: 2020

*Case no. 116610  
 Caseback no. 2360  
 Serial no. E84358W2  
 Movement no. 22D760T4  
 Endlink no. 97200*



595





596

**596**  
**OMEGA**  
 Model: Speedmaster  
 Reference: 32330404006001  
 Movement: Automatic chronograph, cal. 3304  
 Material: Steel  
 Diameter: 39 mm  
 Bracelet: Omega bracelet of steel  
 Circumference: App. 19.5 cm  
 Year: 2010s  
*Accompanied by Omega box, manual, pictogram card and undated certificate.*  
 DKK 20,000–25,000 / € 2,700–3,350



598

**598**  
 Model: Octo Ultratono  
 Reference: 102738  
 Movement: Automatic, cal. BVL 191  
 Material: Black DLC-coated steel  
 Diameter: 41.5 mm  
 Strap: Bulgari rubber strap  
 Buckle: Bulgari C-type buckle of black DLC-coated steel  
 Year: 2017  
*Accompanied by Bulgari box, manuals and certificate from 2017.*  
 DKK 20,000–25,000 / € 2,700–3,350



597

**597**  
**OMEGA**  
 Model: Speedmaster "ADB case"  
 Reference: ST145.002  
 Movement: Manual chronograph, cal. 861  
 Material: Steel  
 Diameter: 42 mm  
 Bracelet: Omega bracelet of steel  
 Circumference: App. 19 cm  
 Year: 1984  
*Accompanied by later Omega box.*  
 DKK 30,000–40,000 / € 4,000–5,350



599

**599**  
**HEUER**  
 Model: Solunar  
 Reference: 279.603  
 Movement: Automatic, cal. 27901  
 Material: Steel  
 Diameter: 45 mm  
 Bracelet: Heuer bracelet of steel  
 Circumference: App. 18 cm  
 Year: 1970s

*This watch indicates high and low tides during two-week periods.*

*Accompanied by service box and service certificate from 2009.*  
 DKK 40,000 / € 5,350







**600**  
**PATEK PHILIPPE**

Model: Calatrava  
Reference: 2526J  
Movement: Automatic, cal. 12-600AT  
Material: 18k gold  
Diameter: 36 mm  
Strap: Leather strap  
Buckle: Buckle of steel  
Year: 1953

*The Patek Philippe reference 2526 is one of the most collectible Patek Philippe wristwatches. But why? The main attraction of the watch is the enamel dial. On pocket watches from the 1800s to early 1900s, enamel dials were the standard, as wages were lower. But since the production of enamel dials require both time and an immense amount of skill, less costly and more robust printed dials became the norm during the 20th century. Secondly, the ref. 2526 features the first serially produced Patek Philippe movement with automatic winding – this being the calibre 12-600AT. This was a momentous achievement and the first in a line of many self-winding in-house movement. That being said, the calibre 12-600AT, with its beautifully engine-turned winding rotor, is one of the best looking of them all. Lastly, the case measures a boasting 36 mm, whereas its counterparts from the 1950-60s usually measured a few millimetres smaller. This means that the watch is much more wearable today.*

*What makes this example even more special is, that it has a movement number just 180 numbers after the very first reference 2526. Important to bear in mind is, that the movement numbers are not just for this reference number but for all of Patek Philippe's production. Hence, this example is one of the earliest ever made. This is supported by the Extract from the Archives from Patek Philippe, confirming the year of production and sale to 1953. Moreover, it has the earliest iteration of the dial, where the indexes are not glued onto the enamel, but rather riveted onto it.*

*The caseback bears a personal engraving, leading to the history of the original owner. The watch was given after 25 years of faithful service in a larger Danish company. The watch comes directly from the family of the original owner of the watch.*

*Accompanied by an Extract from the Archives from Patek Philippe confirming the year of production and sale to 1953.*  
DKK 200,000–300,000 / € 27,000–40,000



600



601

**601**  
**PATEK PHILIPPE**  
Model: Calatrava  
Reference: 3536  
Movement: Manual, cal. 23-300  
Material: 18k gold  
Diameter: 32 mm  
Strap: Leather strap  
Buckle: C-type buckle of gold-plated steel  
Year: 1960s

*Movement no. 1142915*  
*Case no. 432209*  
DKK 25,000–30,000 / € 3,350–4,000



602

**602 \***  
**PATEK PHILIPPE**  
Model: Calatrava  
Reference: 3919J  
Movement: Manual, cal. 215  
Material: 18k gold  
Diameter: 33 mm  
Strap: Croco-embossed leather strap  
Buckle: C-type buckle of gold-plated steel  
Year: 1988

*Accompanied by manual, various documents, service receipt from 1996 and certificate from 1988.*  
DKK 50,000 / € 6,700



603  
P A N E R A I  
Model: Luminor Submersible  
Reference: PAM00682  
Movement: Automatic, cal. P.9010  
Material: Steel  
Diameter: 42 mm  
Strap: Panerai Rubber strap  
Buckle: Panerai C-type buckle of steel  
Year: 2019

Accompanied by Panerai box, certificate, manual, screwdriver and bracelet tool. DKK 40,000 / € 5,350



603

605  
P A N E R A I  
Model: Luminor Submersible  
Reference: PAM00024  
Movement: Automatic, cal. OP III  
Material: Steel  
Diameter: 44 mm  
Strap: Panerai Velcro strap  
Year: 2010s

This model is limited to 800 pieces. This watch bears no. 710/800.

Accompanied by Panerai box, orange Panerai rubber strap with C-type buckle of steel, strap tool and polishing cloth.

This lot is being sold by the request of a lawyer, an insurance company or a public authority.  
DKK 20,000–30,000 / € 2,700–4,000



605

604  
P A N E R A I  
Model: Luminor  
Reference: PAM00375  
Movement: Manual, cal. P.3000  
Material: Composite  
Diameter: 47 mm  
Strap: Panerai strap  
Buckle: Panerai C-type buckle of composite  
Year: 2016

This model is limited to 2000 pieces. This watch is no. 276/2000.

Accompanied by Panerai box, manual, Panerai rubber strap, polishing cloth, purchase receipt from 2018 and certificate from 2016.

This lot is being sold by the request of a lawyer, an insurance company or a public authority.  
DKK 30,000–40,000 / € 4,000–5,350



604





606  
**CARTIER**  
 Model: Santos Demosielle  
 Reference: 2698  
 Movement: Quartz  
 Material: 18k gold and steel  
 Diameter: 20 x 19 mm  
 Bracelet: Cartier bracelet of 18k gold and steel  
 Circumference: App. 14.5 cm  
 Year: 2011

Accompanied by Cartier box, manual and certificate from 2011. DKK 20,000–30,000 / € 2,700–4,000



606



607

607  
**CARTIER**  
 Model: Panthère Vendôme  
 Reference: 866920  
 Movement: Quartz, cal. 66  
 Material: 18k gold  
 Diameter: 23 mm  
 Bracelet: Cartier bracelet of 18k gold  
 Circumference: App. 14 cm  
 Year: 2000s

Accompanied by Cartier box and manual.  
 DKK 35,000–40,000 / € 4,700–5,350



608

608  
**CARTIER**  
 Model: Tank Solo  
 Reference: 3169  
 Movement: Quartz, cal. 690  
 Material: Steel  
 Diameter: 27.5 mm  
 Strap: Cartier alligator strap  
 Clasp: Cartier folding clasp of steel  
 Year: 2012

Accompanied by Cartier box, manual and certificate from 2012.

*This lot is subject to CITES-appendix II and therefore requires a CITES export permit in order to be exported from Denmark to a country outside The European Union. Buyers residing outside the European Union are required to obtain this permit. Contact the department for further details.*

*DKK 20,000–30,000 / € 2,700–4,000*



609

609  
**ROLEX**  
 Model: Datejust  
 Reference: 1603  
 Movement: Automatic, cal. 1570  
 Material: Steel  
 Diameter: 36 mm  
 Bracelet: "Oyster" bracelet of steel  
 Circumference: App. 18.5 cm  
 Year: 1970

*"Linen" dial.*

*Case no. 1603  
 Caseback no. 1603 II.70  
 Serial no. 2527372  
 Movement no. D754121  
 Bracelet no. 7836  
 Endlink no. 258  
 Folding clasp no. 2 71*

*DKK 20,000–30,000 / € 2,700–4,000*





610

**610**  
**I W C**  
Model: Pilot's Watch Mark XVII  
Reference: IW326504  
Movement: Automatic, cal. 30110  
Material: Steel  
Diameter: 41 mm  
Bracelet: IWC bracelet of steel  
Circumference: App. 18.5 cm  
Year: 2012

*Accompanied by IWC box, manuals, polishing cloth, one additional link and certificate from 2012.  
DKK 20,000–25,000 / € 2,700–3,350*



612

**612**  
**R O L E X**  
Model: Datejust 41  
Reference: 126334  
Movement: Automatic, cal. 3235  
Material: Steel  
Diameter: 41 mm  
Bracelet: "Jubilee" bracelet of steel  
Circumference: App. 18 cm  
Year: 2018

*Case no. 126334  
Caseback no. 2480  
Serial no. 931811J  
Movement no. 3K00T278*

*Accompanied by Rolex box, manual, bezel protector, hangtag, purchase receipt and certificate from 2018.*

*This lot is being sold by the request of a lawyer, an insurance company or a public authority.  
DKK 60,000–80,000 / € 8,050–10,500*



611

**611**  
**I W C**  
Model: Pilot Chronograph "Le Petit Prince"  
Reference: IW377714  
Movement: Automatic, cal. 79320  
Material: Steel  
Diameter: 43 mm  
Strap: IWC strap  
Clasp: IWC folding clasp of steel  
Year: 2010s

*Accompanied by IWC travel box.*

*This lot is being sold by the request of a lawyer, an insurance company or a public authority.  
DKK 20,000–30,000 / € 2,700–4,000*



613

**613**  
**I W C**  
Model: Pilot's Watch Mark XVIII "Le Petit Prince"  
Reference: IW327004  
Movement: Automatic, cal. 30110  
Material: Steel  
Diameter: 40 mm  
Strap: IWC x Santoni strap with IWC C-type buckle of steel  
Year: 2016

*Accompanied by IWC box, manual, polishing cloth and certificate from IWC Paris 2016.  
DKK 20,000–25,000 / € 2,700–3,350*





614

**614**  
**OMEGA**  
Model: Constellation  
Reference: 19701151  
Movement: Quartz, cal. 1456  
Material: 18k white gold  
Diameter: 25 mm  
Bracelet: Omega bracelet of 18k white gold  
Circumference: App. 16.5 cm  
Year: 1995

*Bezel set with numerous brilliant-cut diamonds. Dial set with numerous single-cut diamonds. Winding crown set with diamond.*

*Accompanied by Omega box, manual, hangtag, diamond certificate, pictogram card and undated certificate. DKK 35,000–40,000 / € 4,700–5,350*



615

**615**  
**TIFFANY & CO.**  
Model: Metro  
Movement: Quartz  
Material: 18k rose gold  
Diameter: 28 mm  
Strap: Tiffany & Co. alligator strap  
Buckle: C-type buckle of gold-plated steel  
Year: 2010s

*Dial set with numerous baguette- and brilliant-cut diamonds. Bezel set with numerous brilliant-cut diamonds. Winding crown set with diamond.*

*Accompanied by Tiffany & Co. box, manual, diamond certificate and blank certificate.*

*This lot is subject to CITES-appendix II and therefore requires a CITES export permit in order to be exported from Denmark to a country outside The European Union. Buyers residing outside the European Union are required to obtain this permit. Contact the department for further details.*

*DKK 25,000–30,000 / € 3,350–4,000*



616

**616**  
**AUDEMARS PIGUET**  
Model: Royal Oak  
Reference: 4100ST  
Movement: Automatic, cal. 2123  
Material: Steel  
Diameter: 35 mm  
Bracelet: Audemars Piguet bracelet of steel  
Circumference: App. 17 cm  
Year: 1980s

*Accompanied by box, two additional links (approx. 14 mm) and warranty from Cavour 2019.*

*This lot is being sold by the request of a lawyer, an insurance company or a public authority.*

*DKK 80,000–100,000 / € 10,500–13,500*



617

**617 \***  
**OMEGA**  
Model: Seamaster Aqua Terra  
Reference: 220.20.38.20.55.001  
Movement: Automatic, cal. 8800  
Material: 18k Sedna gold and steel  
Diameter: 38 mm  
Bracelet: Omega bracelet of 18k Sedna gold and steel  
Circumference: App. 17 cm  
Year: 2020s

*Dial set with numerous single-cut diamonds.*

*Accompanied by Omega box, manual, hangtag, pictogram card, diamond certificate, chronometer certificate and an undated certificate from Bucherer.*

*DKK 40,000–60,000 / € 5,350–8,050*





618

**618**  
**BLANCPAIN**  
Model: Ultra Slim  
Reference: 6223-3642-55  
Movement: Automatic, cal. 1150  
Material: 18k gold  
Diameter: 37.5 mm  
Strap: Blancpain alligator strap  
Buckle: Blancpain buckle of 18k gold  
Year: 2005

*Accompanied by Blancpain box, manual, brown strap and certificate from 2005.*

*Personal engraving on the caseback.*

*This lot is subject to CITES-appendix II and therefore requires a CITES export permit in order to be exported from Denmark to a country outside The European Union. Buyers residing outside the European Union are required to obtain this permit. Contact the department for further details.*

*DKK 30,000–40,000 / € 4,000–5,350*



619

**619**  
**PATEK PHILIPPE**  
Model: Calatrava "Disco Volante"  
Reference: 2501  
Movement: Manual, cal. 10-200  
Material: 18k gold  
Diameter: 34 mm  
Strap: Black strap  
Buckle: C-type buckle of gold-plated steel  
Year: 1953-55

*Caseback no. 678193*

*Movement no. 740368*

*DKK 45,000–55,000 / € 6,050–7,350*



620

**620**  
**OMEGA**  
Model: De Ville Prestige  
Reference: 695.1280  
Movement: Quartz, cal. 1471  
Material: 18k gold  
Diameter: 28.5  
Strap: Omega alligator strap  
Buckle: C-type buckle of gold-plated steel  
Year: 1990s

*Bezel set with numerous brilliant-cut diamonds. Dial set with numerous single-cut diamonds.*

*Accompanied by Omega box and manual.*

*This lot is subject to CITES-appendix II and therefore requires a CITES export permit in order to be exported from Denmark to a country outside The European Union. Buyers residing outside the European Union are required to obtain this permit. Contact the department for further details.*

*DKK 20,000 / € 2,700*





621

**621**  
**JAEGER-LECOULTRE**  
 Model: Master Compressor Diving Pro Geographic  
 Reference: 159.T.39  
 Movement: Automatic, cal. 979  
 Material: Titanium  
 Diameter: 46 mm  
 Bracelet: Rubber-coated Jaeger-LeCoultre bracelet  
 Circumference: App. 18.5 cm  
 Year: 2014

*Accompanied by Jaeger-LeCoultre box, , manual, extra Jaeger-LeCoultre fabric strap, two extra links, service receipt from 2018, polishing cloth and certificate from 2014. DKK 50,000–60,000 / € 6,700–8,050*



622

**622**  
**ROLEX**  
 Model: Datejust II  
 Reference: 116334  
 Movement: Automatic, cal. 3136  
 Material: Steel  
 Diameter: 41 mm  
 Bracelet: "Oyster" bracelet of steel  
 Circumference: App. 18 cm  
 Year: 2010s

*Case no. 116334  
 Caseback no. 2410  
 Serial no. 6Z92L850  
 Movement no. 484795C  
 End link no. 72210A  
 DKK 40,000–60,000 / € 5,350–8,050*



623

**623**  
**ROLEX**  
 Model: Datejust 41  
 Reference: 126334  
 Movement: Automatic, cal. 3235  
 Material: Steel  
 Diameter: 41 mm  
 Bracelet: "Jubilee" bracelet of steel  
 Circumference: App. 18.5 cm  
 Year: 2010s

*Case no. 126334  
 Caseback no. 2480  
 Serial no. 612X9663  
 Movement no. 55270302  
 Endlink no. 62610*

*This lot is being sold by the request of a lawyer, an insurance company or a public authority.  
 DKK 40,000–60,000 / € 5,350–8,050*



624

MONTBLANC

Model: 1858 Chronograph Tachymeter

Reference: 7332

Movement: Manual chronograph, cal. MB M16.29

Material: 18k gold

Diameter: 44 mm

Strap: Montblanc alligator strap

Buckle: Montblanc buckle of 18k gold

Year: 2010s

Accompanied by Montblanc box, manual and blank certificate. This watch bears no. 006/100.

This lot is subject to CITES-appendix II and therefore requires a CITES export permit in order to be exported from Denmark to a country outside The European Union. Buyers residing outside the European Union are required to obtain this permit. Contact the department for further details.

DKK 80,000–100,000 / € 10,500–13,500



624



625

IWC

Model: Big Pilot Annual Calendar "Antoine de Saint Exupéry"

Reference: IW502706

Movement: Automatic, cal. 52850

Material: 18k rose gold

Diameter: 46.2 mm

Strap: IWC x Santoni strap

Clasp: IWC folding clasp of 18k rose gold

Year: 2019

This particular iteration of the iconic pilots watch from IWC is limited to just 250 pieces. This edition is, as the name hints at, dedicated to the creator of Le Petit Prince, Antoine de Saint Exupéry. This is marked with an A on the dial.

Accompanied by IWC-box, polishing cloth, manuals, travel box and certificate from 2019.

DKK 120,000–150,000 / € 16,000–20,000



625







626

**626**  
**GIRARD - PERREGAUX**  
Model: Richeville Chronograph  
Reference: 2710  
Movement: Manual chronograph, cal. 1872  
Material: 18k gold  
Diameter: 36 mm  
Strap: Crocodile strap  
Buckle: Girard-Perregaux buckle of 18k gold  
Year: 1990s

*This lot is subject to CITES-appendix II and therefore requires a CITES export permit in order to be exported from Denmark to a country outside The European Union. Buyers residing outside the European Union are required to obtain this permit. Contact the department for further details.*

*DKK 20,000–30,000 / € 2,700–4,000*



628

**628 \***  
**MONTBLANC**  
Model: Collection Villeret 1858 – Vintage Tachydate  
Reference: MB-107342  
Movement: Manual chronograph, cal. M16.32  
Material: 18k rose gold  
Diameter: 43.5 mm  
Strap: Montblanc alligator strap  
Buckle: Montblanc C-type buckle of 18k rose gold  
Year: 2020s

*This model is limited to just 58 pieces. This watch bears no. 05/58.*

*Accompanied by Bucherer box, hangtag and warranty from Klarlund.*

*This lot is subject to CITES-appendix II and therefore requires a CITES export permit in order to be exported from Denmark to a country outside The European Union. Buyers residing outside the European Union are required to obtain this permit. Contact the department for further details.*

*DKK 60,000–80,000 / € 8,050–10,500*



627

**627**  
**GÜBELIN**  
Model: “Triple Calendar”  
Reference: 3233  
Movement: Automatic  
Material: gold-plated steel and steel  
Diameter: 31 x 32 mm  
Strap: Leather strap  
Buckle: C-type buckle of gold-plated steel  
Year: 1950s

*Accompanied by a replacement box.*

*DKK 20,000–30,000 / € 2,700–4,000*



629

**629**  
**PANERAI**  
Model: Luminor  
Reference: PAM01523  
Movement: Automatic, cal. P.9010  
Material: Steel  
Diameter: 41 mm  
Strap: Brown strap  
Buckle: Panerai C-type buckle of steel  
Year: 2018

*Accompanied by Panerai box, polishing cloth, manual, plastic watch protector, strap tools and certificate from 2018.* *DKK 25,000–30,000 / € 3,350–4,000*





**630**  
**ROLEX**  
Model: Submariner  
Reference: 5513  
Movement: Automatic, cal. 1520  
Material: Steel  
Diameter: 39 mm  
Bracelet: "Oyster" bracelet of steel  
Circumference: App. 19 cm  
Year: 1966

Case no. 5513  
Caseback no. 5513 III.65  
Serial no. 1286681  
Bracelet no. 93150  
Endlink no. 580

Accompanied by Rolex service pouch and service receipt from Klitgaard 2014.  
DKK 60,000–80,000 / € 8,050–10,500



630

**631**  
**ROLEX**  
Model: Explorer II  
Reference: 226570  
Movement: Automatic, cal. 3285  
Material: Steel  
Diameter: 42 mm  
Bracelet: "Oyster" bracelet of steel  
Circumference: App. 18 cm  
Year: 2022

Case no. 226570  
Back case no. 2100  
Serial no. 87Q129J7  
Movement no. 63E560Z3  
Bracelet no. 78KB00  
Folding clasp no. 6ZK

Accompanied by Rolex box, manual and certificate from 2022..

This lot is being sold by the request of a lawyer, an insurance company or a public authority.  
DKK 50,000–60,000 / € 6,700–8,050



631

**632**  
**ROLEX**  
Model: Sea-Dweller  
Reference: 126600  
Movement: Automatic, cal. 3235  
Material: Steel  
Diameter: 43 mm  
Bracelet: "Oyster" bracelet of steel  
Circumference: App. 19.5 cm  
Year: 2010s

Case no. 126600  
Caseback no. 2500  
Serial no. H2448407  
Movement no. 3TW19369  
Endlink no. 97220

This lot is being sold by the request of a lawyer, an insurance company or a public authority.  
DKK 60,000–80,000 / € 8,050–10,500



632







633

633

**ROLEX**

Model: Yacht-Master II

Reference: 116689

Movement: Automatic, cal. 4160

Material: 18k white gold

Diameter: 44 mm

Bracelet: "Oyster" bracelet of 18k white gold

Circumference: App. 18 cm

Year: 2009

Case no. 116689

Caseback no. 2119

Serial no. V164016

Movement no. C0365616

Endlink no. 78219

*Accompanied by Rolex box, manual, two additional links, hangtag, purchase receipt from 2018 and certificate from 2009.*

*This lot is being sold by the request of a lawyer, an insurance company or a public authority.*

*DKK 125,000–150,000 / € 17,000–20,000*



**INDEX**

**A**

Audemars Piguet 580, 581, 616

**B**

Blancpain 618

Bolou 538

Boucheron 525

Buccellati, Mario 531

Bulgari 527, 598

**C**

Cartier 522, 524, 526

529, 530, 563

564, 565, 566

606, 607, 608

Chanel 403, 410, 574

Chaumet 521

**D**

Dior, Christian 404, 408

**G**

Georg Jensen & Wendel 549, 551

Girard-Perregaux 626

Grosse 528

Gübelin 627

**H**

Halberstadt, A. 534

Hartmann's 494

Hermès 401, 402, 411, 578

Heuer 599

**I**

IWC 568, 585

587, 593, 610

611, 613, 625

**J**

Jaeger-LeCoultre 586, 621

Jensen, Georg 550

Juhl-Jørgensen, Marlene 539

Junget, Willy 536

Jørgensen, Jan 533

**K**

Klarlund, Povl 553

**L**

Lynggaard, Charlotte 554

Lynggaard, Ole 540, 541, 543

545, 546, 552

556, 557, 558

**M**

Montblanc 573, 624, 628

**N**

Nuran 535

**O**

Omega 575, 577

584, 588

592, 596, 597

614, 617, 620

**P**

Panerai 603, 604, 605, 629

Patek Philippe 579, 591, 600

601, 602, 619

Petersen, Ole Bent 555

Piaget 582

**R**

Rolex 559, 560

561, 562, 571

583, 590, 594

595, 609, 612

622, 623, 630

631, 632, 633

**S**

Svart, Ruben 544

**T**

Tiffany & Co. 615

Trolle, Natascha 547, 548

**U**

Ulysse Nardin 567, 569, 570

**V**

Van Cleef & Arpels 523, 576

Vuitton, Louis 405, 406, 407, 409

**W**

Weckström, Björn 520





Disse købsvilkår udgør Bruun Rasmussen Kunstauktioner A/S' ("BRK") købsvilkår for Liveauktioner og er gældende fra 1. februar 2017.

BRK kan til enhver tid ændre købsvilkårene.

Ved bud accepterer budgiver/køber at være bundet af de til enhver tid gældende købsvilkår, som fremgår på [bruun-rasmussen.dk](http://bruun-rasmussen.dk). Købsvilkårene gælder både i forhold til erhvervsdrivende og forbrugere.

## FØR AUKTIONEN

### 1 VURDERING AF GENSTANDE

1.1 Alle udbudte genstande er vurderet af BRK. Vurderingen er et skøn over det forventede hammerslag, jf. punkt 5.3. Vurderingen er baseret på tidligere salg af samme type genstande og erfaringer hos BRK. Hammerslag kan derfor falde højere eller lavere ud end vurderingen.

### 2 BESKRIVELSE AF GENSTANDE

2.1 Udbudte genstande præsenteres med fotos og beskrivelse i kataloger og på [bruun-rasmussen.dk](http://bruun-rasmussen.dk). Beskrivelsen foretages efter bedste overbevisning af BRK og ud fra en nøje undersøgelse efter den på salgstidspunktet herskende opfattelse blandt eksperter.

2.2 De udbudte genstande er af en alder og art, der bevirker, at de ofte er behæftede med slitage, mangler, beskadigelser og reparationer. Som udgangspunkt sælges alt som brugte genstande, og derfor indeholder beskrivelsen i kataloget og på [bruun-rasmussen.dk](http://bruun-rasmussen.dk) ikke en redegørelse for ovenstående punkter eller genstandens stand.

2.3 I visse tilfælde vælger BRK at beskrive en genstands oprindelse. Det sker, hvis en tidligere ejer er offentlig kendt, og/eller hvis historien om et tidligere ejerskab belyser genstanden og dens art. Omvendt sker det også, at sådanne informationer udelades fra beskrivelsen, f.eks. for at imødekomme sælgers ønske om diskretion.

2.4 Vurderingen og beskrivelsen kan blive revideret forud for auktionen. Ændringer offentliggøres på [bruun-rasmussen.dk](http://bruun-rasmussen.dk)

### 3 EFTERSYN

3.1 Udbudte genstande udstilles op til auktionen i et show-room hos BRK. Potentielle budgivere opfordres til at se genstanden efter i detaljer og har selv ansvaret for at forvise sig om dens stand på disse eftersyn, hvor der også er mulighed for at rådføre sig hos vurderingssagkyndige.

3.2 Hvis en potentiel køber ikke har mulighed for at besigtige genstanden ved selvsyn, kan der i de fleste tilfælde udfærdiges en konditionsrapport. Beskrivelsen heri er foretaget efter BRK's bedste overbevisning, men er ikke baseret på videnskabelige undersøgelser. En konditionsrapport tjener blot som identifikation og er ment som en hjælp til budgivere, der ikke selv har mulighed for at besigtige genstanden på eftersynet.

## UNDER AUKTIONEN

### 4 BRK'S ROLLE

- 4.1 Salget af en genstand formidles af BRK på vegne af sælger. BRK afhænder altid udbudte genstande til den højst mulige pris under budgivningen.
- 4.2 Udbudte genstande kan have en med sælger aftalt mindstepris, hvorunder den ikke kan sælges. Denne pris er fortrolig.
- 4.3 Liveauktioner overværes af en af Justitsministeriets beskikket auktionsleder, der sikrer, at auktionerne går retmæssigt for sig.

### 5 BUDGIVNING

- 5.1 Auktionerne afvikles i danske kroner. De tilnærmelsesvis beløb i euro/US dollar vil blive oplyst på skærme i auktionssalen og i øvrigt på opfordring.
- 5.2 Auktionarius bestemmer overbuds størrelse og i hvilket tempo, auktionen afvikles. Overbud stiger normalt med 5 % - 10 % i forhold til det foregående bud. Normalt sælges der 50-100 katalognumre i timen.
- 5.3 Hammerslag betegner både det forhold, at auktionarius slår med hammeren og derved markerer budgivningens afslutning, og den pris (budsum), den udbudte genstand sælges til. Se punkt 7 vedrørende beløb, der tillægges hammerslaget.
- 5.4 Køber er den budgiver, der opnår hammerslag. Ved hammerslaget indgås på baggrund af disse købsvilkår en bindende købs-/salgsaftale.
- 5.5 Bydes på andres vegne, hæfter budgiver som selvskyldnerkautionist for handlen.
- 5.6 Genstande købes som beset, og køber har uanset budtype ingen fortrydelsesret, heller ikke efter forbrugeraftaleloven.
- 5.7 Budgiver skal efter anvisninger fra BRK identificere sig og dokumentere sin betalingsdygtighed, f.eks. ved registrering af gyldigt betalings-/kreditkort, bankgaranti eller indbetaling af depositum.
- 5.8 BRK kan nægte at acceptere et bud, hvis en tilstrækkelig sikkerhed for betaling mangler, eller hvis budgiver tidligere har misligholdt betalingsforpligtigelser ved køb hos BRK.
- 5.9 Auktionslederen træffer i samråd med auktionarius afgørelse i alle tvivlstilfælde omkring budgivningen.

### 6 BUDTYPER

- 6.1 Der er følgende muligheder for at afgive bud:  
**PERSONLIGT FREMMØDE:**  
 Registrering og udlevering af bydeskilt foregår ved indgangen til auktionssalen. Når budgiver ønsker at byde, signaleres dette til auktionarius ved at række bydeskiltet i vejret og tydeligt fremvise dets nummer.  
**KOMMISSIONSBUD:**  
 Det ønskede maksimale bud kan afgives via [bruun-rasmussen.dk](http://bruun-rasmussen.dk) frem til auktionens start eller pr. e-mail, fax eller telefon, så budet er modtaget senest 24 timer forud for auktionens start. En kommissionær byder på budgivers vegne inden for rammerne af det ønskede maksimalbud og vil altid afgive lavest muligt overbud.  
**TELEFONBUD:**  
 I forhold til visse genstande er der mulighed for at blive ringet op af en medarbejder fra BRK, der vil byde på budgivers vegne under auktionen. Servicen kan bestilles via [bruun-rasmussen.dk](http://bruun-rasmussen.dk) indtil tre timer før auktionens start.

### LIVE BIDDING:

Det er muligt at følge auktionen live og byde med via [bruun-rasmussen.dk](http://bruun-rasmussen.dk)

### FORAUKTION:

Visse Liveauktioner indledes med en Onlineauktion. De højeste bud på Onlineauktionen danner udgangspunktet på den efterfølgende Liveauktion.

## EFTER AUKTIONEN

### 7 BELØB, DER TILLÆGGES HAMMERSLAGET

- 7.1 I tillæg til hammerslaget, jf. punkt 5.3, skal køber for den enkelte genstand betale købersalær og, hvis betingelserne er opfyldt, de øvrige beløb, der er nærmere beskrevet nedenfor. Det samlede beløb, som køber skal betale til BRK, benævnes "købesummen".  
 7.1.1 Købersalær: Hammerslaget tillægges et salær til BRK. På Liveauktioner udgør salæret 25,6 % af hammerslaget + moms af salæret, i alt 32 %. For frimærker og mønter udgørsalæret 20 % af hammerslaget + moms af salæret, i alt 25 %.  
 7.1.2 "LIVE bidding": BRK's "LIVE bidding"-software via [bruun-rasmussen.dk](http://bruun-rasmussen.dk) er gratis at benytte for budgivere.  
 7.1.3 Fuldmoms: Visse genstande handles efter de gældende regler om fuldmoms. Her beregnes der moms på 25 % af både hammerslag og salær. Disse genstande er i beskrivelsen i kataloget og på [bruun-rasmussen.dk](http://bruun-rasmussen.dk) mærket med symbolet "\*" eller med teksten: "Dette emne handles i fuldmoms".  
 7.1.4 Kunstnerafgift: Ifølge dansk lovgivning om ophavsret skal der opkræves kunstnerafgift (følgeretsvederlag) for værker af nyere danske og visse udenlandske kunstnere, som enten er nulevende eller ikke har været døde i mere end 70 år. Kunstnerafgiften opkræves på vegne af VISDA. Disse værker er i kataloget mærket med "ARR" (Artist's Resale Right) og på [bruun-rasmussen.dk](http://bruun-rasmussen.dk) med teksten "Dette emne er belagt med kunstnerafgift". Kunstnerafgiften tillægges hele hammerslaget + salær (ekskl. moms), når beløbet overstiger 300 euro, som angivet nedenfor:

Hammerslag + salær (ekskl. moms)	Betalingsssats
300,01 - 50.000 euro	5%
50.000,01 - 200.000 euro	3%
200.000,01 - 350.000 euro	1%
350.000,01 - 500.000 euro	0.5%
over 500.000 euro	0.25%

Kunstnerafgiften kan ikke overstige 12.500 euro (ekskl. moms) for den enkelte genstand. Afgiften skal betales i danske kroner, og omregningskursen (EUR/DKK) fastsættes af VISDA.

- 7.1.5 Betalings-/kreditkortgebyr: BRK forbeholder sig ret til at opkræve de af indløsningselskaberne pålagte betalings-/kreditkortgebyrer. Satserne fremgår ved budgivning via [bruun-rasmussen.dk](http://bruun-rasmussen.dk) og ved betaling.

### 8 BETALINGSFRIST

- 8.1 Købesummen forfalder til betaling ved hammerslaget, og køber har herefter otte dage til at betale købesummen til BRK.

### 9 BETALINGSMÅDER

- 9.1 Betaling kan ske på følgende måder:  
 A: Med betalings-/kreditkort (Dankort, Visa, MasterCard, Maestro, Diners Club, JCB og China UnionPay) eller kontant (op til 14.999 kr.) i auktionssalen eller efterfølgende i en afdeling hos BRK. Bemærk, at vi ikke modtager 500-eurosedler.

B: Med betalings-/kreditkort (Dankort, Visa, MasterCard, Maestro, Diners Club og JCB) på [bruun-rasmussen.dk](http://bruun-rasmussen.dk) under købers personlige side.

C: Via bankoverførsel til BRK's konto i Danske Bank: 4183 4310970638 · Swift/BIC: DABADKDK · IBAN: DK4130004310970638.

## 10 MOMSFRTAGELSE, -BETALING OG -DEPONERING

10.1 Visse købere kan vælge hvilken momstype, der skal være gældende for handlen. Valget skal meddeles BRK senest to hverdage efter købet og kan ikke omgøres.

A: Momsregistrerede virksomheder i Danmark kan vælge, at handlen skal ske efter reglerne om fuldmoms, jf. punkt 7.1.3.

B: Momsregistrerede virksomheder i et andet EU-land kan fritages for dansk moms, når det kan dokumenteres, at genstanden er transporteret til den udenlandske adresse, som køber har oplyst over for BRK, og som er anført på fakturaen. I sådanne tilfælde skal der afregnes moms efter de gældende regler i det land, hvor køber er momsregistreret. Det tilrådes at søge oplysning hos de lokale myndigheder. Køber kan undlade at gøre brug af muligheden for momsfritagelse og i stedet betale dansk brugtmoms/fuldmoms.

C: Købere med bopæl uden for EU kan fritages for dansk moms, når det kan dokumenteres, at genstanden er transporteret ud af EU. BRK udsteder så vidt muligt og mod gebyr de fornødne eksportpapirer, som skal fremvises ved toldmyndighederne. Køber kan undlade at gøre brug af muligheden for momsfritagelse og i stedet betale dansk brugtmoms/fuldmoms.

10.2 Momsregistrerede virksomheder i et andet EU-land og købere med bopæl uden for EU skal deponere den danske moms af fakturabeløbet hos BRK, indtil eksporten er gennemført på dokumenteret lovligt vis. Foretages eksporten af en af BRK godkendt speditor, skal momsens ikke deponeres. Se listen over godkendte speditorer på [bruun-rasmussen.dk](http://bruun-rasmussen.dk)

## 11 OVERSKRIDELSE AF BETALINGSFRIST

11.1 Overskrides en betalingsfrist, herunder fristen i punkt 8, opkræves morarenter, som beregnes efter Nationalbankens officielle udlånsrente + 8 % om året af det skyldige beløb.

11.2 Betales købesummen inkl. renter ikke senest ti dage efter, at der er fremsat påkrav herom, er BRK berettiget til at søge købesummen betalt ved modregning i depositum/ved træk på bankgaranti eller at hæve købet.

11.3 Hæves købet, er BRK berettiget til at sælge genstanden på en ny auktion og kræve omkostningerne og en eventuel difference mellem hammerslag (samt salær), der er opnået på de to auktioner, betalt af den misligholdende køber.

11.4 Alle forfaldne krav (inkl. omkostninger), som ikke betales rettidigt, kan BRK i tillæg til inkasso søge inddrevet på følgende måder:

A: For købers regning sælge genstande indleveret til auktion af eller på vegne af køber. Salget kan gennemføres uden hensyntagen til en aftalt mindstepris. Genstande indleveret til auktion kan ikke kræves udleveret, så længe forfalden gæld henstår ubetalt.

B: Inddrage købers tilgodehavende hos BRK, herunder tilgodehavende fra salg af genstande indleveret af eller på vegne af køber, uanset om et sådant tilgodehavende stammer fra auktionssalg, som ligger forud for eller efter tidspunktet for købers misligholdelse.



## 12 AFHENTNING OG UDLEVERING

- 12.1 Ejendomsretten til en købt genstand overgår til køber, når hele købesummen inkl. eventuelle renter og gebyrer er betalt, og først herefter kan udlevering af genstanden finde sted.
- 12.2 Ved udlevering af en købt genstand forbeholder BRK sig retten til at kræve tilfredsstillende dokumentation for, at den person, som ønsker genstanden udleveret, enten selv er køberen eller er bemyndiget af køberen til at få genstanden udleveret.
- 12.3 Udlevering af visse våben kræver forevisning af gyldig våbentilladelse. Sådant krav er angivet med teksten "Køb af dette emne kræver forevisning af gyldig våbentilladelse" i kataloget og på [bruun-rasmussen.dk](http://bruun-rasmussen.dk)
- 12.4 Købte genstande henligger fra hammerslaget for købers regning og risiko. Afhentning skal ske senest otte hverdage efter sidste auktionsdag.
- 12.5 Foretages afhentningen ikke rettidigt, transporteres de købte genstande til et lager for købers regning og risiko. Transporten koster 150 kr. inkl. moms pr. genstand, og opbevaringen koster 150 kr. inkl. moms pr. genstand pr. påbegyndt uge. Henligger en genstand uafhængt i så lang tid, at lagerlejen overstiger genstandens værdi, er BRK berettiget til for købers regning og risiko og uden hensyn til mindstepris at bortauktionere genstanden eller sælge den underhånden. Køber hæfter til transport og lagerleje, der ikke dækkes ved sådant salg.
- 12.6 I henhold til gældende hvidvasklovgivning skal køber i visse tilfælde udlevere identitetsoplysninger og fremvise billed-id til BRK, før køber kan få den købte genstand i sin besiddelse

## 13 FORSENDELSE

- 13.1 Er køber forhindret i selv at afhente en genstand, tilbyder BRK for købers regning og risiko at emballere og arrangere forsendelse enten med post eller speditør. Se punkt 12.2 angående legitimation.

## 14 EKSPORTTILLADELSE

- 14.1 For at sikre at dansk kulturarv af afgørende betydning forbliver i Danmark, kan Kulturværtdiudvalget for visse genstandes vedkommende nedlægge eksportforbud. Hvis køber ønsker at eksportere en genstand ud af Danmark, hvor der er nedlagt et eksportforbud, annulleres købet, og Kulturværtdiudvalget er forpligtet til at overtage genstanden til den pris, der blev opnået på auktionen. Køber kan ikke rejse krav mod BRK som følge af, at et eksportforbud bliver nedlagt.
- 14.2 Visse genstande er omfattet af Washingtonkonventionen, også kendt som CITES, der har til formål at stoppe ulovlig handel med genstande fremstillet af udryddelsestruede vilde dyr og planter. Såfremt en genstand er omfattet af Washingtonkonventionen, CITES, liste 1, vil det fremgå af beskrivelsen på [bruun-rasmussen.dk](http://bruun-rasmussen.dk) og være markeret med symbolet "©" i kataloget. Følgende regler gør sig gældende:
- A: Genstande omfattet af Washingtonkonventionen, CITES, liste 1, må kun handles, når der foreligger en dispensation i form af et såkaldt CITES-salgscertifikat. BRK indhenter det fornødne certifikat fra Naturstyrelsen, der tillader handel og eksport til lande inden for EU. Dog kan genstande, som er færdigforarbejdet før 1947, frit handles inden for EU uden et certifikat.
- B: Det er alene genstande omfattet af Washingtonkonventionen, CITES, liste 1, som er særkilt markeret på [bruun-rasmussen.dk](http://bruun-rasmussen.dk) og i kataloget. Genstande omfattet af Washingtonkonventionen, CITES, liste 2, der frit kan sælges og transporteres inden for EU, er ikke særkilt markeret.
- C: Ved eksport til lande uden for EU skal der uanset årstallet for genstandens færdigforarbejdning altid indhentes en CITES-reeksporttilladelse fra Naturstyrelsen,

når genstanden er omfattet af Washingtonkonventionen, CITES, liste 1 og 2. Denne eksporttilladelse kan normalt indhentes problemfrit, når liste 1-genstande enten er solgt med et CITES-salgscertifikat eller er færdigforarbejdet før 1947. Liste 2-genstande opnår ligeledes normalt problemfrit en reeksporttilladelse. Eventuelle omkostninger, der opkræves af de danske myndigheder i forbindelse med udstedelse af en reeksporttilladelse, vil blive pålagt købers faktura.

D: I forbindelse med eksport til lande uden for EU kan særlige regler gøre sig gældende ifm. den efterfølgende import, og køber opfordres til at indhente oplysninger fra egne myndigheder.

## 15 MANGLER VED KØBTE GENSTANDE

- 15.1 Købelovens mangelsregler kan finde anvendelse. Nedenfor er angivet et ikke udtømmende uddrag af købers mangelsbeføjelser.
- 15.2 Køber er berettiget til at annullere et køb, hvis beskrivelsen har været behæftet med væsentlige fejl, der har ført til et højere hammerslag, end en korrekt beskrivelse ville have resulteret i. I sådanne tilfælde vil den samlede købesum blive refunderet. Køber kan ikke kræve betaling af renter af købesummen eller kræve dækning af anden udgift eller tab.
- 15.3 Et køb kan ikke annulleres, og køber kan ikke kræve købesummen refunderet eller rejse noget andet krav mod BRK, hvis beskrivelsen af genstanden er i overensstemmelse med punkt 2, eller hvis en påvisning af falskneri havde krævet brug af videnskabelige metoder, der enten ikke var tilgængelige på salgstidspunktet, havde været uforholdsmæssigt omkostningskrævende at anvende eller havde ført til beskadigelse af den pågældende genstand.
- 15.4 Krav om annullering af et køb skal meddeles BRK, når køber er blevet bekendt med det forhold, der berettiger køber til at annullere købet, dog senest to år fra den seneste afhentningsdato efter punkt 12.4. Den købte genstand skal returneres til BRK i samme stand som på hammerslagstidspunktet. Overholdes disse betingelser ikke, mister køber retten til at annullere købet og kan ikke kræve købesummen refunderet. Køber er selv ansvarlig for at betale de omkostninger, der er forbundet med returnering af genstanden.

## 16 INDSIGELSE- OG ANSVARSBEGRÆNSNING

- 16.1 BRK tager forbehold for fejl, tekniske vanskeligheder samt udefrakommende misbrug eller forstyrrende påvirkning under auktionen. Budgetgiver kan ikke rejse noget krav mod BRK som følge heraf.
- 16.2 Køber er i alle tilfælde selv ansvarlig for korrekt betaling af moms og andre afgifter, gebyrer mv. i overensstemmelse med danske og udenlandske regler.
- 16.3 Medmindre andet fremgår af disse købsvilkår, kan BRK aldrig blive ansvarlig for budgetgivers/købers driftstab, avancetab, andre indirekte tab eller følgeskader.

## 17 PERSONDATAPOLITIK

- 17.1 Det er vigtigt for BRK at sikre fortrolighed og sikkerhed omkring budgetgivers/købers personlige oplysninger. Persondatapolitikken fremgår af [bruun-rasmussen.dk](http://bruun-rasmussen.dk).

## 18 KLAGE, TVISTLØSNING OG LOVVALG

- 18.1 Har budgetgiver/køber en klage, kan der altid rettes henvendelse til BRK.
- 18.2 Lykkes det ikke at finde en løsning, kan forbrugere sende en klage til Nævnenes Hus, Toldboden 2, 8800 Viborg, e-mail: [naevneneshus.dk](mailto:naevneneshus.dk). Forbrugere med bopæl i et andet EU-land end Danmark kan klage til EU-Kommissionens online klageportal via hjemmesiden: <http://ec.europa.eu/odr>.
- 18.3 Tvister skal indbringes i Danmark ved Københavns Byret, jf. dog punkt 18.2. I forbrugerforhold gælder de ufravigelige værnetingsregler.

*Bruun Rasmussen Kunstauktioner*

Rev. 03.24

## CONDITIONS OF PURCHASE – LIVE AUCTIONS

These conditions of purchase represent Bruun Rasmussen Kunstauktioner A/S' ("BRK") conditions of purchase for Live Auctions and are effective from 1 January 2017. BRK may modify the conditions of purchase at any time.

By bidding, the bidder/buyer accepts the current conditions of purchase as they appear on [bruun-rasmussen.dk](http://bruun-rasmussen.dk). The conditions of purchase are applicable to both business owners and consumers.

## BEFORE THE AUCTION

### 1 VALUATION OF ITEMS

- 1.1 All the offered items are valued by BRK. The valuation is an estimate based on the expected hammer price, see paragraph 5.3. The estimate is based on the previous sale of similar items as well as BRK's past experience. The hammer price can therefore be higher or lower than the estimated price.

### 2 DESCRIPTION OF ITEMS

- 2.1 Items up for auction are presented with photographs and descriptions in catalogues and on [bruun-rasmussen.dk](http://bruun-rasmussen.dk). The description is worded according to the best of BRK's knowledge and based on detailed research in accordance with the prevailing views among experts at the time of sale.
- 2.2 The items up for auction are of an age and nature that often mean that they are in a worn, repaired or damaged condition. As a starting point everything is sold as used items. For this reason, the descriptions in the catalogue or at [bruun-rasmussen.dk](http://bruun-rasmussen.dk) do not include a statement regarding the above or the condition of the item.
- 2.3 In some cases, BRK may choose to describe an item's provenance. Such a description is made if a former owner is publicly known and/or if the story of previous ownership sheds further light on the item and its background. In other cases, such information is left out of the description, for instance to meet the seller's wish for privacy.
- 2.4 It is possible that the estimate and description are revised prior to the auction. Changes are published on BRK's website.

### 3 PREVIEW

- 3.1 Items up for auction are presented prior to the auction in one of BRK's showrooms. Potential bidders are encouraged to inspect the items closely and are responsible for determining the condition of the items at these previews, where they also have the opportunity to consult with the valuation experts.
- 3.2 If a potential buyer does not have the opportunity to inspect the item personally, a condition report can be drafted in most cases. The description in this report has been made according to BRK's honest conviction but is not based on scientific studies. A condition report only serves as an identification and is meant as an aid to bidders who do not have the opportunity to inspect the item at the preview.

## DURING THE AUCTION

### 4 THE ROLE OF BRK

- 4.1 The sale of an item is facilitated by BRK on behalf of the seller, and BRK always sells items up for auction at the highest price offered during the bidding round.

- 4.2 Items up for auction can have a reserve price that has been agreed upon with the seller. The price is confidential and the item cannot be sold below this price.
- 4.3 The Live Auctions are presided over by one of the Danish Ministry of Justice's appointed auctioneers, ensuring that the auctions proceed correctly and lawfully.

## 5 BIDDING

- 5.1 The currency used while the auctions take place is Danish kroner. The approximate amount in euro/US dollars is shown on screens in the saleroom and also on request.
- 5.2 The auctioneer determines the size of the bid increment and the pace of the auction. Bid increments usually rise by 5% - 10% compared to the previous bid. Approximately 50-100 auction lots are sold per hour.
- 5.3 The hammer price refers both to the gavel used by the auctioneer that signifies the end of a bidding round on an item and to the price (bidding amount) that the item up for auction is sold for. See paragraph 7 regarding amounts added to the hammer price.
- 5.4 The buyer is the bidder that submits the highest bid, thereby obtaining the hammer price. At the moment the hammer price is determined, a binding purchase/sale agreement is entered into based on these conditions of purchase.
- 5.5 If bids are made on behalf of others, the bidder serves as surety for the transaction.
- 5.6 Items are purchased in their present state and condition, and regardless of the type of bidding the buyer has no right to cancel his purchase, neither under the Danish Consumer Contracts Act.
- 5.7 Bidders are required, in accordance with BRK's instructions, to identify themselves and document their ability to pay, for instance by registration of a valid debit/credit card, bank guarantee or a deposit.
- 5.8 BRK may refuse to accept a bid if a sufficient guarantee of the bidder's ability to pay is not provided, or if the bidder has previously defaulted on payment obligations on purchases from BRK.
- 5.9 The overseeing auctioneer will, in consultation with the auctioneer at the podium, decide what to do in matters of dispute concerning a bidding round.

## 6 TYPES OF BIDDING

- 6.1 Bidding options:
- IN PERSON:**  
Registration and obtaining the bidding paddle take place at the entrance to the saleroom. When the bidder wishes to bid, it is signalled to the auctioneer on the podium by raising the bidding paddle in the air and clearly displaying its number.
- COMMISSION BIDS:**  
The intended maximum bid can be submitted via [bruun-rasmussen.dk](http://bruun-rasmussen.dk) until the start of the auction or by e-mail, fax or phone, so that the bid is received no later than 24 hours prior to the start of the auction. A commission agent bids on behalf of the bidder within the limits of the stated maximum bid. The commission agent will always bid the lowest possible amount to achieve the hammer price.

### TELEPHONE BID:

With certain items it is possible to have a BRK employee call the bidder over the phone. The employee will then bid on behalf of the bidder during the auction. The service can be booked via [bruun-rasmussen.dk](http://bruun-rasmussen.dk) up until three hours before the auction is set to begin.



#### LIVE BIDDING:

It is possible to follow the auction live and bid on the auction lots via [bruun-rasmussen.dk](http://bruun-rasmussen.dk).

#### PRE-AUCTION:

Some Live Auctions are preceded by an online auction. The highest bids from the online auction then represent the starting bids at the following Live Auction.

## AFTER THE AUCTION

### 7 AMOUNTS ADDED TO THE HAMMER PRICE

- 7.1 In addition to the hammer price, see paragraph 5.3, the buyer pays a buyer's premium for the individual items as well as the other amounts described below if the conditions for these are applicable. The total amount that the buyer pays to BRK is called the "purchase price".
- 7.1.1 Buyer's Premium: The hammer price always includes an additional fee to BRK. At the Live Auctions, the fee is 25,6% of the hammer price + VAT of the fee, 32% in total. For stamps and coins, the fee is 20% of the hammer price + VAT of the fee, a total of 25%.
- 7.1.2 "LIVE Bidding": BRK's "LIVE Bidding" software is free to use for bidders on [bruun-rasmussen.dk](http://bruun-rasmussen.dk).
- 7.1.3 Full VAT: Certain items are sold at auction in accordance with the current rules regarding full VAT. In such a situation, a VAT of 25% is imposed on both the hammer price and the buyer's premium. These items are marked in the catalogue and on [bruun-rasmussen.dk](http://bruun-rasmussen.dk) with the symbol "\*\*\*", or with the text: "This item is subject to full VAT".
- 7.1.4 Artist's Resale Right: In accordance with Danish copyright law, a royalty fee covering the Artist's Resale Right has to be charged for works by newer Danish artists, and some foreign artists, who are either alive or have not been dead for more than 70 years. The royalty fee covering the Artist's Resale Right is charged on behalf of VISDA (Visual Rights Denmark). These works are marked "ARR" in the printed catalogue, and on [bruun-rasmussen.dk](http://bruun-rasmussen.dk) the description of the works includes the text: "This lot is subject to the Artist's Resale Right". The royalty fee covering the Artist's Resale Right is added to the hammer price + the buyer's premium (excluding VAT) if the amount exceeds EUR 300, as indicated below:

Hammer price + buyer's premium (ex. VAT)	Payment Rate
300,01 - 50,000 euro	5%
50,000,01 - 200,000 euro	3%
200,000,01 - 350,000 euro	1%
350,000,01 - 500,000 euro	0.5%
over 500,000 euro	0.25%

The royalty fee covering the Artist's Resale Right cannot exceed EUR 12,500 (excluding VAT) for each item. The fee must be paid in Danish kroner, and the conversion rate (EUR/DKK) is set by VISDA.

- 7.1.5 Debit/Credit Card Fee: Amounts Added to the Hammer Price: BRK reserves the right to charge the debit/credit card fees imposed by the payment services companies. The rates will appear when bidding on [bruun-rasmussen.dk](http://bruun-rasmussen.dk) and at payment.

### 8 PAYMENT DEADLINE

- 8.1 The purchase price falls due after the hammer price has been determined, and then the buyer has eight days to pay BRK the purchase price.

### 9 PAYMENT METHODS

- 9.1 The payment can be made in the following ways:
- A: With debit/credit card (Visa, MasterCard, Maestro, Diners Club, China UnionPay and JCB) or cash (up to DKK 14.999) in the saleroom or subsequently at one of

BRK's locations. Please note that we do not accept EUR 500 banknotes.

- B: With debit/credit card (Dankort, Visa, MasterCard, Diners Club and JCB) via BRK's website on the buyer's personal page.
- C: By bank transfer into BRK's account with Danske Bank: 4183 4310970638 · Swift/BIC: DABADKKK · IBAN: DK4130004310970638.

### 10 VAT EXEMPTION, PAYMENT & DEPOSIT

- 10.1 Some buyers can choose which type of VAT should apply to the transaction. The choice has to be communicated to BRK no later than two working days after the purchase and cannot be changed subsequently.
- A: Businesses in Denmark registered for VAT can decide that the transaction is to be conducted in accordance with the rules for full VAT, see paragraph 7.1.3.
- B: Businesses registered for VAT in another EU Member State can be exempted from paying Danish VAT if it can be proved that the item has been transported to the foreign address that the buyer has registered with BRK and which is written on the invoice. In such cases, the VAT should be settled according to the rules applicable in the country where the buyer is registered for VAT. It is advisable to consult with the local authorities. The buyer can decide not to be exempt from regular VAT and instead pay Danish VAT on second-hand goods/full VAT.
- C: Buyers residing outside the EU can be exempted from Danish VAT if it can be proved that the item has been transported out of the EU. To the extent possible and for a fee, BRK can issue the necessary export documents for the customs authorities. The buyer may decide not to be exempt from regular VAT and instead pay Danish VAT on second-hand goods/full VAT.
- 10.2 Companies registered for VAT in another EU Member State and buyers residing outside the EU must deposit the Danish VAT on the amount invoiced with BRK until the export process has been completed in a documented, lawful fashion. If the export is undertaken by one of BRK's authorized forwarding agents, the VAT does not have to be deposited. See the list of authorized forwarding agents on [bruun-rasmussen.dk](http://bruun-rasmussen.dk).

### 11 OVERDUE PAYMENTS

- 11.1 If payment is made after a deadline, including the deadline specified in paragraph 8, interest on overdue payments will be charged and estimated in accordance with the Danish Central Bank's official lending rate + 8% per year on the amount due.
- 11.2 If the purchase price, including interest, has still not been paid ten days after the demand for payment has been made, BRK is entitled to seek the purchase price paid by making a set-off against the deposit/by drawing on the bank guarantee or to cancel the purchase.
- 11.3 If the purchase is cancelled, BRK is entitled to sell the item at a new auction and demand the costs and any difference between the new and the earlier hammer price (including the buyer's premium) covered by the defaulting buyer.
- 11.4 In addition to debt collection, BRK may seek recovery of all due claims (including costs) not paid in a timely manner in the following ways:
- A: Making the buyer cover the costs of selling items consigned to auction by or on behalf of the buyer. The sale can be conducted without regard to an agreed reserve price. Items consigned for auction cannot be collected as long as overdue debts are unpaid.
- B: Seizing the buyer's remaining balance with BRK, including the balance from the sale of items consigned by or on behalf of the buyer, regardless of whether such receivables derive from auction sales prior to or after the date of the buyer's default on the payment.

### 12 PICK-UP & COLLECTION

- 12.1 The title to a purchased item passes to the buyer when the full purchase price, including any interest and fees, has been paid, and only then can the collection of an item take place.
- 12.2 In connection with the collection of a purchased item, BRK reserves the right to demand satisfactory documentation that the person who wants to pick up the item is either the buyer himself/herself or authorized by the buyer to receive the item on his/her behalf.
- 12.3 The collection of certain weapons requires presentation of a valid weapons certificate. Items with such requirements are listed with the text: "The purchase of this item requires the presentation of a valid weapons certificate" in the catalogue and on [bruun-rasmussen.dk](http://bruun-rasmussen.dk).
- 12.4 Purchased items are stored after the auction at the buyer's expense and risk. Pick-up must take place no later than eight working days after the last auction day.
- 12.5 If the item(s) is/are not picked up on time, the purchased items will be transported to a warehouse at the buyer's risk and expense. The transport costs are DKK 150 including VAT per item and the storage costs are DKK 150 including VAT per item for each week or part of a week. If an item is left unclaimed for an amount of time that results in the storage costs exceeding the value of the item, BRK will be entitled to, at the buyer's expense and risk and without regard to the reserve price, sell the item at an auction or privately. The buyer is still liable for the costs of transportation and storage not covered by such sale.
- 12.6 In accordance with current anti-money laundering laws, the buyer must in certain cases submit personal information and present a photo ID to BRK before the buyer can have the purchased item placed in his possession.

### 13 SHIPPING

- 13.1 If the buyer is unable to pick up the purchased item, BRK offers to pack and arrange delivery either by mail or by freight forwarder at the buyer's risk and expense. See paragraph 12.2 regarding identification.

### 14 EXPORT LICENSE

- 14.1 To ensure that Danish cultural heritage of vital importance remains in Denmark, the Danish Cultural Assets Commission can place an export ban on certain items. If the buyer wishes to export an item that is subject to an export ban in Denmark, the purchase will be cancelled and the Danish Cultural Assets Commission is obliged to acquire ownership of the item for the price obtained at auction. The buyer cannot raise any claims against BRK as a result of an export ban.
- 14.2 Certain items are included in the Washington Convention, also known as CITES. The purpose of CITES is to stop the trade of items made with endangered species and flora. If the item is included in the Washington Convention, CITES, Appendix 1, this will appear in the description of the item on [bruun-rasmussen.dk](http://bruun-rasmussen.dk) and be marked with the symbol "☉" in the catalogue. The following rules are applicable:
- A: Items that are included in the Washington Convention, CITES, Appendix 1, can only be traded when a dispensation in the form of a CITES certificate has been obtained. BRK obtains the required certificate from the Danish Nature Agency that allows trade and export to countries within the EU. Items that were produced before 1947 can, however, be freely traded within the EU without a certificate.
- B: It is only items included in the Washington Convention, CITES, Appendix 1 that are marked individually on [bruun-rasmussen.dk](http://bruun-rasmussen.dk) and in our catalogue. Items included in the Washington Convention, CITES, Appendix 2, which can be freely sold and transported within the EU, are not individually marked.
- C: Export to countries outside the EU must, regardless of the year of the item's production, always procure a CITES re-export permit from the Danish Nature Agency if the item is included in the Washington Convention, Appendix 1 and 2. This export permit can usually be

obtained without problems, if the item is either sold with a CITES certificate or was made prior to 1947. Appendix 2 items usually also receive a re-export permit without problems. Any fees charged by the Danish authorities in connection with the issuance of a re-export permit will be added to the buyer's invoice.

D: In connection with export to other countries outside the EU, special rules may apply concerning the subsequent import, and the buyer is encouraged to consult the relevant local authorities about this issue.

### 15 DEFECTS IN THE PURCHASED ITEMS

- 15.1 The lack of conformity rules of the Danish Sale of Goods Act may apply. Below is a non-exhaustive excerpt of the buyer's remedies in regard to lack of conformity.
- 15.2 The buyer is entitled to cancel a purchase if the description contained significant errors that have led to a higher hammer price than a correct description would have resulted in. In such cases, the total purchase price will be refunded. The buyer cannot demand payment of interest on the purchase price or demand payment of any other expenses or losses.
- 15.3 A purchase cannot be cancelled and the buyer cannot demand a refund of the purchase price or raise any other claims against BRK if the description of the item is in compliance with paragraph 2. The same applies if evidence of forgery has required the use of scientific methods that were either not available at the time of sale, were excessively costly to use or led to the damage of the item in question.
- 15.4 Claims for a cancellation of a purchase must be notified to BRK when the buyer has discovered the fact that entitles the buyer to cancel the purchase. This notice, however, has to be given no later than two years after the final pick-up date according to paragraph 12.4. The item purchased must be returned to BRK in the same condition as it was on the day it was sold at auction. If these conditions are not met, the buyer loses the right to cancel the purchase and cannot claim a refund of the purchase price. The buyer is responsible for paying the costs associated with the return of the item.

### 16 OBJECTIONS & LIMITATIONS OF LIABILITY

- 16.1 BRK is aware that errors, technical difficulties and external abuse or disruptive influences may occur during the auction. Bidders cannot raise any claims against BRK as a result of such events.
- 16.2 The buyer is always responsible for the correct payment of VAT and other costs, fees etc. in accordance with Danish and foreign regulations.
- 16.3 Unless otherwise stated in these conditions of purchase, BRK may never be held liable for bidders'/buyers' operating loss, loss of profits, other indirect losses or consequential loss.

### 17 PRIVACY POLICY

- 17.1 It is important to BRK to ensure confidentiality and security regarding the bidder's/buyer's personal information. The privacy policy can be found on [bruun-rasmussen.dk](http://bruun-rasmussen.dk).

### 18 COMPLAINTS, DISPUTE RESOLUTION AND APPLICABLE LAW

- 18.1 BRK can always be contacted if the bidder/buyer has a complaint.
- 18.2 If the dispute cannot be resolved, the consumer can submit a complaint to the Complaint Resolution Centre, Nævnenes Hus, Toldboden 2, 8800 Viborg, Denmark, email: [naevne-neshus.dk](mailto:naevne-neshus.dk). Consumers residing in another EU country than Denmark can submit their complaint to the European Commission's Online Dispute Resolution platform via the website: <http://ec.europa.eu/odr>.
- 18.3 In Denmark, disputes must be brought before the City Court of Copenhagen, but see paragraphs 18.2. The mandatory rules on jurisdiction apply to consumer interests.

*Bruun Rasmussen Auctioneers*

*The above is an English translation of the Danish version of the Conditions of Purchase. In case of a dispute, only the Danish version of the present Conditions of Purchase of Bruun Rasmussen is valid.*



## ADDRESSES

### BRUUN RASMUSSEN AUCTIONEERS

#### LYNGBY

NØRGAARDSVEJ 3, 2800 KONGENS LYNGBY

+45 8818 1111 / info@bruun-rasmussen.dk

#### GLOSTRUP

PAUL BERGSØES VEJ 20B, DK-2600 GLOSTRUP

+45 8818 1111 / info@bruun-rasmussen.dk

#### AARHUS

SØREN FRICHS VEJ 34D, DK-8230 ÅBYHØJ

+45 8818 1100 / aarhus@bruun-rasmussen.dk

#### JYLLAND AND FYN

PETER BECK

+45 8818 1186 / pb@bruun-rasmussen.dk

NICK MESSMANN

+45 8818 1232 / nic@bruun-rasmussen.dk

ESBEN SKOV JENSEN

+45 8818 1199 / ej@bruun-rasmussen.dk

#### REPRESENTATIVES

##### FRANCE AND BELGIUM

DITTE HERBORG KROGH · PARIS

+33 6 6185 4564 / dhk@bruun-rasmussen.dk

##### GERMANY

NICK MESSMANN

+45 8818 1232 / nic@bruun-rasmussen.dk

## CONTACT DIRECTLY

### KONTAKT DIREKTE

#### MAIN NUMBER

Bruun Rasmussen Auctioneers +45 8818 1111

#### CUSTOMER SERVICE

kundeservice@bruun-rasmussen.dk +45 8818 1010

customerservice@bruun-rasmussen.dk +45 8818 1010

#### COMMISSIONS

Lise Winther Wobido +45 8818 1013

Anja Bering Hansen +45 8818 1028

bids@bruun-rasmussen.dk

#### CATALOGUE REQUESTS

Kundeservice / Customer service +45 8818 1111

#### AUCTION GUIDANCE

Franziska Kampmann +45 8818 1026

fka@bruun-rasmussen.dk

#### SHIPPING

shipping@bruun-rasmussen.dk +45 8818 1055

#### VALUATION AND INFORMATION

##### VALUATION AT YOUR HOME

Henrik Schleppegrel +45 8818 1145

hsc@bruun-rasmussen.dk

Liselotte Toxværd Møller +45 8818 1234

ltm@bruun-rasmussen.dk

##### DECORATIVE ART, FURNITURE AND CARPETS

Ralph Lexner +45 8818 1161

rl@bruun-rasmussen.dk

##### CARPETS

Henrik Schleppegrel +45 8818 1145

hsc@bruun-rasmussen.dk

##### FURNITURE

Anders Fredsted +45 8818 1142

afr@bruun-rasmussen.dk

##### PORCELAIN

Line Hjorth Langkjær +45 8818 1166

lla@bruun-rasmussen.dk

##### SILVER

Martin Hans Borg +45 8818 1128

mhb@bruun-rasmussen.dk

##### ASIAN ART AND ANTIQUITIES

Alexandra Nilsson +45 8818 1164

ani@bruun-rasmussen.dk

##### RUSSIAN ART

Martin Hans Borg +45 8818 1128

mhb@bruun-rasmussen.dk

#### 19<sup>TH</sup> CENTURY AND OLD MASTER PAINTINGS

Julie Arendse Voss +45 8818 1123

jav@bruun-rasmussen.dk

Birte Stokholm +45 8818 1122

bst@bruun-rasmussen.dk

Søren Kjerk Holmstrup +45 8818 11 27

skh@bruun-rasmussen

Sofie Normann Christensen +45 8818 11 25

snc@bruun-rasmussen

#### MODERN AND CONTEMPORARY ART

Niels Boe-Hauggaard +45 8818 1182

nbh@bruun-rasmussen.dk

Niels Raben +45 8818 1181

nr@bruun-rasmussen.dk

#### MODERN DESIGN

Anna Widenborg +45 8818 1187

awi@bruun-rasmussen.dk

#### MODERN DECORATIVE ART

Amalie Hansen +45 8818 1194

amh@bruun-rasmussen.dk

#### THE ART OF LUXURY

Daniel Foldschack +45 8818 1174

dfo@bruun-rasmussen.dk

#### FASHION

Emma Marie Huus-Thomsen +45 8818 1179

eht@bruun-rasmussen.dk

#### JEWELLERY

Eva Dybkjær +45 8818 1227

evd@bruun-rasmussen.dk

Rie Kertsch Dalager +45 8818 11 75

rkd@bruun-rasmussen

#### WRISTWATCHES

Frederik Plum +45 8818 1168

fp@bruun-rasmussen.dk

#### WINE

Thomas Rosendahl Andersen +45 8818 1206

tra@bruun-rasmussen.dk

#### COINS

Brian Lohmann +45 8818 1213

blo@bruun-rasmussen.dk

#### STAMPS

Torben Ringtved +45 8818 1225

tr@bruun-rasmussen.dk

#### ARMS, ARMOUR AND SPORTING GUNS

Ralph Lexner +45 8818 1161

rl@bruun-rasmussen.dk



## COMMISSION BIDS

### KOMMISSIONSBUD

It is possible to leave commission bids if you can not be present at the auction yourself. This service is free of charge.

When leaving a commission bid, you are instructing our customer service to bid up to a specified amount on your behalf.

The situation can occur that another buyer has already bid the same as you were prepared to. Are you then willing to bid further? If not the lot will be sold to another buyer.

If you do not wish to exceed your bid then write "Max", for maximum, next to the amount. You can also allow us to raise your bid by approx. 15% or approx. 25%.

The hammer price may be higher or lower than the estimated price, so it is possible to buy below the estimate. Bruun Rasmussen will always buy at the lowest price possible, as if you yourself had been present at the auction.

All commission bids are strictly confidential.

Commission bids must be submitted no later than **24 hours** prior to the start of the auction.

#### HOW TO MAKE A COMMISSION BID:

Complete the commission form with all pertinent information.

Indicate the lot number.

Indicate the amount you are prepared to bid.

Should this amount be the absolute maximum, please write "Max" in the appropriate column.

You can also allow us to bid by up to approx. 15% or approx. 25% more by indicating so.

Sign the commission form and make sure that Bruun Rasmussen receives it **24 hours** prior to the start of the auction.

If the information should be insufficient, Bruun Rasmussen can abstain from bidding. Bruun Rasmussen can not be held responsible for error in bidding or failure to execute bids.

#### INTERNET:

Commission bids can be submitted via website [bruun-rasmussen.dk](http://bruun-rasmussen.dk) directly from the page with the item you want to submit a bid for.

Deadline for submissions of bids via the website is **3 hours** prior to the start of the auction.

Submitted bids are shown under "Your bids" when you are logged in. Please contact technical support on +45 8818 1114 for questions about the registration and submission of bids on the website.

For additional information, please consult "Conditions of Purchase" §1.

#### TELEPHONE BIDDING:

Should you wish to bid at auction by telephone, please inform Bruun Rasmussen of your name and telephone number, as well as which catalogue numbers you are interested in, no later than **3 hours** prior to the start of the auction. You will then be contacted shortly before the relevant lot comes under the hammer, thereby allowing you to participate without being in the auction room yourself.

For additional information, please consult "Conditions of Purchase" §1.

Det er muligt at afgive kommissionsbud, hvis De ikke selv kan være til stede på auktionens dag. Denne service er gratis.

Når De afgiver en kommission, beder De vores kundeservice på Deres vegne byde op til et af Dem bestemt beløb i hammerslag.

Der kan opstå den situation, at en anden køber allerede har budt det beløb, som De ønsker at afgive. Er De da villig til at gå et bud højere eller er De indforstået med at nummeret sælges til anden side?

Ønsker De ikke at byde højere så skriv "Max" ud for beløbet. Er De i tvivl om hvor højt De vil byde, kan De hæve budet med op til ca. 15% eller ca. 25%.

Salgsprisen kan blive højere eller lavere end vurderingen, så der er også mulighed for at købe til under den angivne vurdering. Vor kundeservice køber altid så billigt som muligt til Dem, som havde De selv været tilstede på auktionen.

Alle kommissioner behandles strengt fortroligt.

Kommissionsbud skal være Bruun Rasmussen i hænde senest **24 timer** før auktionens start.

#### SÅDAN BYDER DE:

Udfyld blanketten kommissionsbud med alle oplysninger.

Angiv katalognummer.

Angiv beløbet De ønsker at byde.

Er dette Deres absolutte maximum bedes De anføre "Max" i kolonnen.

De kan også forhøje Deres bud med henholdsvis ca. 15% eller ca. 25%, ved at indikere dette i kolonnen.

De bedes underskrive kommissionsblanketten og sikre Dem, at Bruun Rasmussen modtager den senest **24 timer** før auktionens start.

Hvis Deres oplysninger ikke er tilstrækkelige, kan Bruun Rasmussen undlade at byde for Dem, ligesom Bruun Rasmussen ikke kan gøres ansvarlig for fejl ved budgivning.

#### INTERNET:

Kommissionsbud kan afgives på hjemmesiden [bruun-rasmussen.dk](http://bruun-rasmussen.dk) direkte fra siden med den effekt, De ønsker at byde på.

Seneste afgivelse af bud via hjemmesiden er **3 timer** før auktionens start.

Afgivne bud kan ses på hjemmesiden under "Deres bud", når de er logget ind. Kontakt teknisk support på 8818 1114 for spørgsmål om registrering og budgivning via internettet.

For yderligere information, se "Købskonditioner", §1.

#### TELEFONBUD:

Såfremt De ønsker at byde pr. telefon, bedes De oplyse Bruun Rasmussen Deres navn og telefonnummer samt hvilke katalognumre, De ønsker at byde på, senest **3 timer** før auktionens start. De vil så blive ringet op kort før, den aktuelle vare kommer under hammeren, og De kan på denne måde deltage i auktionen uden selv at være til stede.

For yderligere information, se "Købskonditioner" på [bruun-rasmussen.dk](http://bruun-rasmussen.dk) under "Guide".

Ret til ændringer forbeholdes © 2024 Bruun Rasmussen Kunstauktioner  
Foto: Peter Grosen, Henrik Wichmann & Peter Madsen. Tryk: Cool Gray  
Grafik og dtp: Jorge Figueiredo

## COMMISSION BIDS

### KOMMISSIONSBUD

Skal være Bruun Rasmussen i hænde senest **24 timer** før auktionens start.

*Must be submitted no later than 24 hours prior to the start of the auction.*

AUKTION NR AUCTION NO: **922**

Navn Name: \* .....

Adresse Address: \* .....

Postnr./by City: \* .....

Land Country: \* ..... Fax: .....

Tel: \* .....

e-mail: ..... CVR-nr. VAT No.: .....

Bank: ..... Konto nr. Acct. No.: .....

Adresse Address: .....

Postnr./By City: ..... Land Country: .....

Tel: ..... Kontaktperson Contact: .....

Obligatoriske felter er mærket med en stjerne \* *Mandatory fields are marked with an asterisk \**

Undertegnede giver hermed fuldmagt til Bruun Rasmussen Kunstauktioner A/S om på mine vegne at købe nedennævnte katalognumre så fordelagtigt som muligt, inden for det af mig anførte beløb, i hammerslag.  
*I hereby request that Bruun Rasmussen bid on my behalf on the following lots up at the prices indicated below.*

Undertegnede har udfyldt ovennævnte med de ønskede oplysninger, samt har accepteret købskonditionerne.  
*The undersigned has supplied the required information and agrees to be bound by the conditions of purchase.*

Signatur: \* ..... B.R. kunde-nr. Client No.: .....

Jeg ønsker at modtage salgsresultater på de emner jeg har budt på via email  dagligt  efter auktion  
 *I wish to receive sales results on the items I have been bidding on via e-mail*  *every day*  *after the auction*

på e-mail adressen *on this e-mail address:* .....

Katalog nr. Lot. No.	Beskrivelse Description	Bud kr. Bid DKK	Max	+15%	+25%

#### BRUUN RASMUSSEN KUNSTAUKTIONER A/S

Norgaardsvej 3 · DK-2800 Kongens Lyngby · Tel +45 8818 1111 · [bids@bruun-rasmussen.dk](mailto:bids@bruun-rasmussen.dk) · [bruun-rasmussen.dk](http://bruun-rasmussen.dk)





THE ART OF LUXURY

