

DESIGN



BRUUN RASMUSSEN

DESIGN



LIVE AUCTION 922

Thursday 19 September 4 pm

PREVIEW

Thursday 12 September 11 am - 6 pm

Friday 13 September 11 am - 5 pm

Saturday 14 September 10 am - 4 pm

Sunday 15 September 10 am - 4 pm

or by appointment

BRUUN RASMUSSEN

PART OF THE BONHAMS NETWORK

Nørgaardsvej 3 · DK-2800 Lyngby · Tel +45 8818 1111

info@bruun-rasmussen.dk · bruun-rasmussen.com





COME AND EXPERIENCE
THE PREVIEW AND ART TALKS!

- Thursday 12 September 11 am–6 pm**
- 11 am The preview opens
 - 3–6 pm Bubbly and Music
 - 4 pm Opening talk: Kai Nielsen’s “Aarhuspigen” and the current exhibitions at Faaborg Museum and Glyptoteket
by curators Sofie Olesdatter Bastiansen and Anna Manly
- Friday 13 September 11 am–5 pm**
- 3 pm Talk: “Highlights under the hammer”
by Kathrine Eriksen and Emma Bjørløw Møller, specialists in modern art
- Saturday 14 September 10 am–4 pm**
- 12 am Talk: “Stories from Danske Bank’s former headquarters in Erichsen’s House”
by Bettina Sinnet Fornitz, Danske Bank’s art curator
 - 1 pm Talk: “Force of Nature – Georg Jensen and Axel Salto”
by Amalie Hansen, specialist in modern decorative art
- Sunday 15 September 10 am–4 pm**
- 1 pm Talk: “Highlights under the hammer”
by Sofie Normann Christensen, specialist in fine art

Coffee from Amiga Coffee will be served by our barista on all the days.

DAYS OF SALE

Monday	16 September		
	4 pm	House of Danske Bank - antiques, art and design	1 - 55
	7 pm	Fine art	56 - 138
Tuesday	17 September		
	3 pm	Antiques - decorative art, furniture and carpets	139 - 197
	6 pm	Modern paintings and sculptures	198 - 353
		Prints	354 - 361
Wednesday	18 September - The Art of Luxury		
	3 pm	Handbags	401 - 411
		Jewellery	412 - 558
	7 pm	Wristwatches	559 - 633
Thursday	19 September		
	4 pm	Force of Nature - Georg Jensen and Axel Salto	634 - 691
		Modern decorative art	692 - 702
		Design	703 - 846

DEADLINE FOR CLAIMING ITEMS: WEDNESDAY 2 OCTOBER

Items bought at this auction must be paid no later than eight days from the date of the invoice and claimed at Nørgaardsvej 3 in Lyngby by Wednesday 2 October at the latest. Otherwise, they will be moved to Bruun Rasmussen’s storage facility at Paul Bergsøes Vej 16 in Glostrup at the buyer’s expense and risk. Here, they can be picked up from Friday 4 October. This transportation will cost DKK 150 per item VAT included, and storage will cost DKK 150 per item per week VAT included.

FOR INQUIRIES PLEASE CONTACT



*Head of Department of Modern
Decorative Art and Design*
Anna Berger Widenborg
+45 8818 1187
awi@bruun-rasmussen.dk



Design
Andreas Krabbe
+45 8818 1193
ank@bruun-rasmussen.dk



Design
Poul Svalgaard Henriksen
+45 8818 1132
psh@bruun-rasmussen.dk



Design
Anders Bodholt Askman
+45 8818 1198
aba@bruun-rasmussen.dk



Decorative Art
Amalie Hansen
+45 8818 1194
amh@bruun-rasmussen.dk



Decorative Art and Design
Klara Johansdotter Hagberg
+45 8818 1236
kjh@bruun-rasmussen.dk



Paintings and Design
Peter Beck – Aarhus
+45 8818 1186
pb@bruun-rasmussen.dk



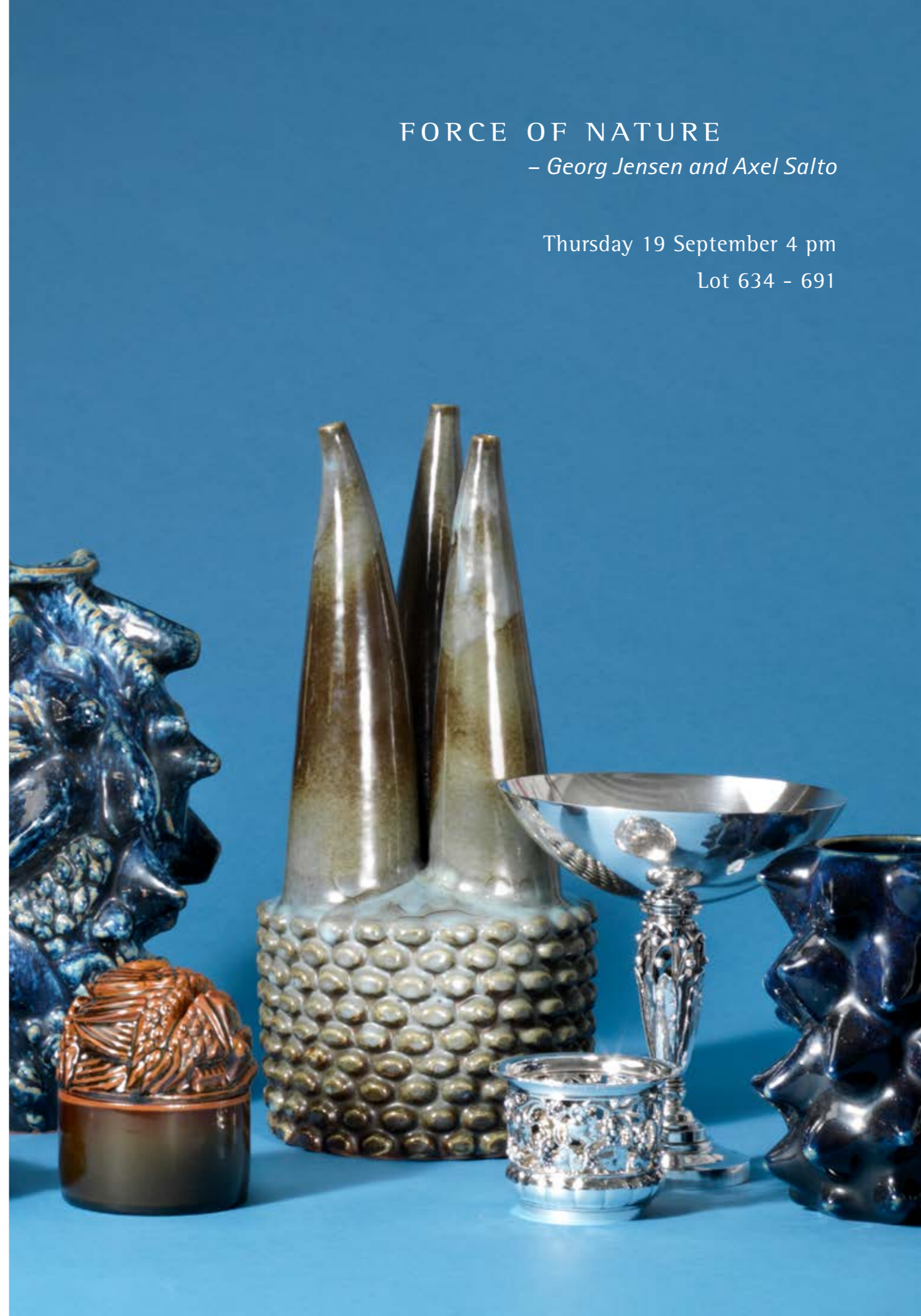
Director of Sales
Lea Gram Mikkelsen
+45 8818 1023
lgr@bruun-rasmussen.dk



Representative France + Belgium
Ditte Herborg Krogh
+33 6 6185 4564
dhk@bruun-rasmussen.dk

FORCE OF NATURE
– Georg Jensen and Axel Salto

Thursday 19 September 4 pm
Lot 634 – 691



Force of Nature – Georg Jensen and Axel Salto

At the upcoming Live Auction on 19 September, we will focus on two of the biggest names in 20th century Danish decorative art with a unique selection of masterpieces by Georg Jensen and Axel Salto. As the master of silver and the master of ceramics, Georg Jensen and Axel Salto were both pioneers in their respective fields, inspiring generations of artists, and they both used nature as a starting point for their design. Their sublime pieces are today in high demand on the auction market and regarded as coveted collectables.

Georg Jensen (1866–1935): A Worldwide Success

"It is the best metal we have, and the most beautiful (...). And silver has this lovely moonlight glow. Reminiscent of the light on a Danish summer night. Silver can grow dark, and it can, when it clouds over, resemble the 'Bog woman's brew' (the morning mist)." Georg Jensen, interview 1926

The silversmith and designer Georg Jensen led Danish decorative art into a new era. With his focus on a high level of artistic quality and craftsmanship, as well as an innovative approach to design, he caused a stir from the very beginning. He wanted to beautify normal utility items based on an ideal of enhancing everyday life. One of Georg Jensen's trademarks is the hammered surface, which allows the grey-white tone of the silver to come into its own. It testifies to the laborious work of the human hand and reflect the light beautifully.

The silversmithy was founded in Copenhagen in 1904 at a time when industrialisation was raging, and traditional craftsmanship was threatened by mechanical mass production. One of the most fascinating things about Georg Jensen's silversmithy is the unique journey it takes you on through the changing styles of the 20th century. The key to the company's international success lies in the fact that Georg Jensen understood the importance of working with the best designers of the time.

Axel Salto (1889–1961): Creating in the Spirit of Nature

"I have expressed the ornamentation of nature in a host of different materials, including textiles and paper – and in my graphics – and yet I have returned to stoneware, which drew me in with its rich possibilities as a vessel of free thinking and as a means of capturing nature's secret shifting of expression – a mysticism that is the innermost essence of ceramics." Axel Salto, interview 1949.

Axel Salto put Danish ceramics on the world map. With his distinctive style, he transcended the boundaries of ceramics and transformed the discipline from pottery into real art. He was a passionate, wide-ranging artist who expressed himself through various media including graphics, textile printing, poetry, paperwork and ceramics.

He made an international name for himself after having been presented at the Paris Exposition in 1925. His stoneware works in the budded, sprouting and fluted style embody Axel Salto's desire to create in the "spirit of nature" that became his lifelong guiding principle. At first glance, his works may be difficult to take in, because what are you actually looking at? They often bring to mind a teeming forest floor or undersea flora. Axel Salto's works have always attracted attention and divided the waters as a result of their interpretation of nature's lush, untamed and raw primordial forces – and at times almost demonic energy.

634

GEORG JENSEN

b. Rådved 1866, d. Hellerup 1935

A large, oval sterling silver jardiniere with hammered surface and profiled rim. Edged, oval base. Stem with relief decor of oak foliage and acorns. Georg Jensen anno 1926. Design no. 489. Weight 2648 g. H. 20.5 cm. W. 31.5 cm. L. 49.2 cm. *DKK 60,000–75,000 / € 8,050–10,000*



634

635
HARALD NIELSEN

b. Baarse 1892, d. 1977

"Pyramid". A sterling silver and silver cutlery set. Georg Jensen 1926-1930, 1929-1932, 1933-1944, 1945-1951 and after 1945. Designed 1926. Weight excluding pieces with steel 3310 g. (101)

Comprising:

12 dinner knives with short handle L. 22.5 cm.

7 dinner forks L. 19.2 cm.

6 dinner spoons L. 18.2 cm.

6 large dinner spoons L. 19.5 cm.

1 dinner spoon L. 18.5 cm.

10 luncheon knives with short handle L. 19.7 cm.

1 luncheon knife with long handle L. 20.5 cm.

12 luncheon forks L. 16 cm.

10 dessert spoons L. 16.5 cm.

12 pastry forks L. 14 cm.

1 fruit knife L. 16.4 cm.

2 teaspoons L. 11.8 cm.

10 coffee spoons L. 10.7 cm.

1 salad set with steel L. 18.7 cm.

1 sardine fork L. 13.4 cm.

1 cold cut fork L. 14 cm.

1 bottle opener with long handle L. 16 cm.

1 fried egg server L. 19.5 cm.

1 pie knife L. 25.2 cm.

2 compote spoons L. 13.7 cm.

1 small server with steel L. 15.7 cm.

1 sauce ladle L. 18 cm.

1 steak fork L. 20 cm.

DKK 25,000 / € 3,350



636
GEORG JENSEN

b. Rådvaad 1866, d. Hellerup 1935

"Blossom". A large, oval sterling silver tray with hammered surface and two openwork handles. Georg Jensen 1925-1932. Design no. 2 K. Weight 2182 g. H. incl. handle approx. 3.5 cm. W. 36.5 cm. L. 61.5 cm. DKK 50,000-60,000 / € 6,700-8,050

637
GEORG JENSEN

b. Rådvaad 1866, d. Hellerup 1935

A sterling silver bottle coaster, the inside with a loose openwork liner. Sides and liner with openwork grape and leaf decor. Georg Jensen 1945-1977. Design no. 289 A. Weight 488 g. H. 9.5 cm. Diam. 12.7 cm.

Literature: David A. Taylor & Jason W. Laskey: "Georg Jensen Holloware", *The Silver Fund Collection*, ill. p. 128.

DKK 25,000-30,000 / € 3,350-4,000



636

637

638
GEORG JENSEN

b. Rådvaad 1866, d. Hellerup 1935

A pair of two branched sterling silver candlesticks. Hammered surface and stylized grape decor. Georg Jensen 1945-1977. Design no. 324. Weight 2335 g. H. 22.5 cm. W. 25.5 cm. Inner diam. of candle holders 2.4 cm. (2)

Literature: Janet Drucker, "Georg Jensen - A Tradition of Splendid Silver", ill. p. 234.

Literature: David A. Taylor & Jason W. Laskey: "Georg Jensen Holloware - The Silver Fund Collection", ill. pp. 144-145.

DKK 75,000 / € 10,000



638

639 *

JOHAN ROHDE

b. Randers 1856, d. Hellerup 1935

"Acorn". A sterling silver cutlery set. Georg Jensen after 1945. Designed 1915. Weight excluding pieces with steel 3170 g. (103)

Comprising:

16 fish knives L. 20.6 cm.

15 fish forks L. 16.5 cm.

14 dinner knives with long handle L. 22.6 cm.

14 dinner forks L. 19 cm.

15 dinner spoons L. 19.2 cm.

6 luncheon knives with short handle L. 20.2 cm.

6 luncheon forks L. 16.5 cm.

6 toddy spoons L. 18.4 cm.

3 mocha spoons L. 9.5 cm.

4 coffee spoons L. 12.8 cm.

4 large teaspoons L. 15.7 cm. DKK 30,000 / € 4,000



639

640
HARALD NIELSEN

b. Baarse 1892, d. 1977

An oval shaped clear glass decanter with bevelled surface. Signed Orrefors. Sterling silver stopper and matching oval tray with stylized relief decor. Georg Jensen 1933-1944. Design no. 797. Weight excluding the glass decanter and including the glass part on stopper 333 g. Total H. 26 cm. Tray: W. 10.2 cm. L. 14.3 cm. (2) DKK 20,000 / € 2,700



640

641
GEORG JENSEN

b. Rådvald 1866, d. Hellerup 1935

A sterling silver grape tazza with hammered surface. Spiral fluted stem and circular base. Georg Jensen 1925-1932. Design no. 263 B. Designed 1918. Weight 574 g. H. 18.9 cm. Diam. 18.3-18.5 cm.

DKK 20,000-25,000 / € 2,700-3,350



641

642
GEORG JENSEN

b. Rådvald 1866, d. Hellerup 1935

A large, oval sterling silver fruit dish with lightly hammered surface. Openwork stem with foliage and beads. Georg Jensen 1933-1944. Design no. 306 A. Weight 1930 g. H. 14.3-14.5 cm. W. 28.5 cm. L. 37.5 cm.

Literature: David A. Taylor, Jason W. Laskey: "Georg Jensen - Holloware - The Silver Fund Collection", ill. p. 137.

DKK 80,000-100,000 / € 10,500-13,500



642

643

JOHAN ROHDE

b. Randers 1856, d. Hellerup 1935

"Acorn". A large sterling silver cutlery set. Georg Jensen 1925-1932, 1933-1944, 1945-1951 and after 1945. Designed 1915. Weight excluding pieces with steel 5343 g. (180)

Comprising:

- 12 lobster forks L. 19 cm.
- 12 fish knives L. 20.5 cm.
- 12 dinner knives with long handle L. 22.8 cm.
- 14 dinner forks L. 18.8 cm.
- 12 dinner spoons L. 19 cm.
- 13 luncheon knives with short handle L. 20.5 cm.
- 12 luncheon forks L. 16.8 cm.
- 8 fruit knives L. 16.6 cm.
- 18 coffee spoons L. 11 cm.
- 3 teaspoons L. 12.8 cm.
- 14 large teaspoons L. 16.6 cm.
- 8 gilded mocha spoons L. 9.6 cm.
- 3 iced tea spoons L. 18.2 cm.
- 5 long cold cut forks L. 16.6 cm.

- 3 short cold cut forks L. 11.7 cm.
- 2 grape fruit spoons L. 14.7 cm.
- 12 pastry forks L. 14.2 cm.
- 2 nut crackers L. 15 cm.
- 1 fish serving set L. resp. 24.8 and 26.8 cm.
- 1 herring fork L. 15.7 cm.
- 1 bottle opener with long handle L. 16.2 cm.
- 1 fried egg server L. 20.3 cm.
- 1 vegetable spoon L. 22.5 cm.
- 1 vegetable spoon L. 23.8 cm.
- 1 vegetable fork L. 24 cm.
- 2 server L. 19.6 cm.
- 1 cheese plane L. 21.3 cm.
- 1 serving spoon L. 20 cm.
- 1 gravy ladle L. 19.5 cm.
- 1 small carving set L. 23 and 26.3 cm.
- 1 steak fork L. 19.9 cm.
- 1 salad set with hollow handles L. 21.8. and 21.6 cm.

DKK 50,000-60,000 / € 6,700-8,050



643

644

JOHAN ROHDE

b. Randers 1856, d. Hellerup 1935

"Acorn". A circular sterling silver dish with hammered surface. The rim with stylized relief decor. Georg Jensen 1945-1977. Design no. 642 C. Weight 986 g. H. 2.5 cm. Diam. 36 cm. DKK 20,000 / € 2,700



645

645

JOHAN ROHDE

b. Randers 1856, d. Hellerup 1935

A round sterling silver bonbonniere with hammered surface. Openwork stem and finial with swan decor. Georg Jensen anno 1918. Design no. 249. Weight 415 g. H. 16 cm. Diam. 11.3 cm.

Literature: Janet Drucker: "Georg Jensen - A Tradition of Splendid Silver", ill. p. 198.

Literature: David A. Taylor & Jason W. Laskey: "Holloware - The Silver Fund Collection", ill. p. 115.

DKK 40,000 / € 5,350

646

JOHAN ROHDE

b. Randers 1856, d. Hellerup 1935

"Acorn". A set of 12 sterling silver charger plates with hammered surface. Rim with stylized relief decor. Georg Jensen 1945-1977. Design no. 642 A. Total weight 8114 g. Diam. 28 cm. (12)

Literature: David A. Taylor & Jason W. Laskey: "Georg Jensen Holloware - The Silver Fund Collection", ill. p. 230. DKK 60,000-75,000 / € 8,050-10,000



646

647

OSCAR GUNDLACH-PEDERSEN

b. Odense 1886, d. Kongens Lyngby 1960

"Parallel". A sterling silver cutlery set. Georg Jensen anno 1931, 1932, 1933-1944 and after 1945. Designed 1931. Weight excluding pieces with steel 3510 g. (93)

Comprising:

7 soup spoons L. 16 cm.

10 dinner knives L. 21.4 cm.

11 dinner forks with rounded bowl L. 18.2 cm.

2 large dinner forks L. 18.5 cm.

2 dinner spoons L. 19.2 cm.

1 dinner spoon with pear-shaped bowl L. 18.5 cm.

8 luncheon knives L. 19 cm.

8 luncheon forks with rounded bowl L. 16.2 cm.

2 dessert spoons L. 16.6 cm.

6 pastry forks L. 14 cm.

6 coffee spoons with pear shaped bowl L. 12 cm.

5 mocha spoons L. 10.4 cm.

1 salad set with steel L. 21.2 cm.

2 bottle openers with long handle L. 14.5 cm.

2 bottle openers with short handle L. 11.5 cm.

2 bottle openers with round handle L. 9.5 cm.

1 small fruit knife L. 11.5 cm.

1 pie knife L. 25.8 cm.

1 cheese plane 20.2 cm.

3 serving spoons L. 19.7 cm.

1 porridge spoon L. 25.7 cm.

1 serving spoon L. 23 cm.

2 small serving spoons L. 17 cm.

1 small server with steel L. 14.5 cm.

1 marmalade spoon L. 14.3 cm.

1 small server L. 16.5 cm.

1 mustard spoon L. 9 cm.

1 paper knife L. 21.8 cm.

1 small serving spoon L. 17 cm.

1 gravy ladle L. 19 cm.

1 steak fork L. 19.2 cm.

DKK 25,000 / € 3,350



648

GEORG JENSEN

b. Rådvaad 1866, d. Hellerup 1935

A sterling silver grape tazza with hammered surface. Spiral fluted stem and circular base. Georg Jensen 1933-1944. Design no. 263 B. Designed 1918. Weight 588 g. H. 18.9 cm. Diam. 18.4 cm. *DKK 25,000 / € 3,350*

649

GEORG JENSEN

b. Rådvaad 1866, d. Hellerup 1935

A large sterling silver gravy boat with hammered surface and oval base. Stem and handle with relief grape decor. Georg Jensen 1945-1977. Design no. 296. Weight 598 g. H. incl. handle 17.7 cm. W. 11.7 cm. L. 23 cm.

Literature: David A. Taylor & Jason W. Laskey: "Georg Jensen Holloware - The Silver Fund Collection", ill. p. 131.

DKK 25,000 / € 3,350

650

GEORG JENSEN

b. Rådvaad 1866, d. Hellerup 1935

A circular sterling silver dish with cover. Hammered surface and cover with stylized leaf and berry finial. Hinged handles with grape decor. Georg Jensen 1945-1977. Design no. 408 E. Weight 1456 g. H. 15 cm. Diam. 24.3 cm.

Literature: David A. Taylor & Jason W. Laskey: "Georg Jensen Holloware - The Silver Fund Collection", ill. p. 166.

DKK 25,000 / € 3,350



651
SIGVARD BERNADOTTE

b. 1907, d. 2002

"Bernadotte". A sterling silver cutlery set. Georg Jensen after 1934. Designed 1939. Weight excluding pieces with steel 3528 g. (85)

Comprising:

12 dinner knives with long handle L. 21.8 cm.

12 dinner forks L. 19.2 cm.

12 dinner spoons L. 19.7 cm.

12 dessert spoons L. 18.5 cm.

12 pastry forks L. 13.8 cm.

12 coffee spoons L. 10.8 cm.

2 short cold cut forks L. 11.4 cm.

2 medium cold cut forks L. 15.2 cm.

1 sugar spoon L. 9.8 cm.

1 marmalade spoon L. 15 cm.

1 grape fruit spoon L. 15.7 cm.

1 steak fork L. 20.8 cm.

1 gravy ladle L. 17 cm.

1 small server with steel L. 16.2 cm.

1 pie knife L. 25.7 cm.

1 serving spoon L. 20.7 cm.

1 large serving spoon L. 24 cm.

DKK 25,000–30,000 / € 3,350–4,000



651

652
HARALD NIELSEN

b. Baarse 1892, d. 1977

"Pyramid". A circular sterling silver tureen with cover and two handles. Georg Jensen 1933-1944. Design no. 600 A. Weight 1019 g. H. 13 cm. Diam. 21 cm. L. 24.5 cm. DKK 25,000-30,000 / € 3,350-4,000

653
SIGVARD BERNADOTTE

b. 1907, d. 2002

A pair of sterling silver candlesticks with grooved stem. Georg Jensen 1945-1977. Design no. 855 E. Designed 1938. Total weight 585 g. H. 18 cm. Inner diam. of candle holder 2.2 cm. (2)

Provenance: British actor and writer Sir Peter Ustinov.

Literature: David A. Taylor & Jason W. Laskey: "Georg Jensen Holloware - The Silver Fund Collection", ill. p. 275. DKK 20,000 / € 2,700



654
SIGVARD BERNADOTTE, A.O.

b. 1907, d. 2002

A sterling silver cocktail shaker and six cocktail goblets with dotted relief decor. Georg Jensen 1945-1977. Design no. 945 and 945 B. Designed 1948. Total weight 1032 g. Cocktail shaker: H. 27.8 cm. Cocktail goblets: H. 5.8 cm. Diam. 5.5 cm. Accompanied by a circular silver tray. Marked E.G.F. for F.E.G. Frederiksen, Copenhagen. Weight 947 g. H. 2 cm. Diam. 36 cm. (8)

DKK 50,000-60,000 / € 6,700-8,050

655
SIGVARD BERNADOTTE

b. 1907, d. 2002

A pair of sterling silver candlesticks with grooved stem. Georg Jensen 1945-1977. Design no. 855 E. Designed 1938. Total weight 568 g. H. 18 and 18.2 cm. Inner diam. of candle holder 2.2 cm. (2)
Provenance: British actor and writer Sir Peter Ustinov.

Literature: David A. Taylor & Jason W. Laskey: "Georg Jensen Holloware - The Silver Fund Collection", ill. p. 275. DKK 20,000 / € 2,700



656

JOHAN ROHDE

b. Randers 1856, d. Hellerup 1935

A sterling silver tazza with partly hammered surface and openwork stem with floral decor and foliage. Georg Jensen 1925-1932. Design no. 574. Weight 1234 g. H. 26.3-27 cm. Diam. 24 cm.

DKK 30,000-40,000 / € 4,000-5,350



656

657

HARALD NIELSEN

b. Baarse 1892, d. 1977

"Pyramid". A sterling silver cutlery set. Georg Jensen 1933-1944, 1945-1951 and after 1945. Designed 1926. Weight excluding pieces with steel 3090 g. (108)

Comprising:

12 dinner knives with long handle L. 22.5 cm.

13 dinner forks L. 18 cm.

12 luncheon knives with long handle L. 20.5 cm.

11 luncheon forks L. 16 cm.

14 dessert spoons L. 16.5 cm.

11 pastry forks L. 14 cm.

12 teaspoons L. 11.9 cm.,

8 coffee spoons L. 10.5 cm.

10 bouillon spoons L. 12.8 cm.

5 cold cut forks L. 14 cm.

DKK 40,000 / € 5,350



657



658

AXEL SALTO

b. Copenhagen 1889, d. Frederiksberg 1961

A large stoneware vase modelled in sprouting, budded and fluted style. Decorated with Blue mussel glaze. Signed Salto, 21492. Made 1959. Designed 1957. H. 43 cm. Diam. max. ca. 30 cm.

Literature: "Axel Salto - Master of Stoneware", Museum of Ceramic Art Denmark, ill. in model register fig. 314, p. 182.

DKK 1,000,000 / € 135,000

659

AXEL SALTO

b. Copenhagen 1889, d. Frederiksberg 1961

A round stoneware lid jar. Cylindrical base with smooth surface, dome-shaped lid modelled with stylized relief decor. Decorated with Olivin glaze. Signed Salto. Royal Copenhagen. Designed 1946. H. 16 cm. Diam. 13 cm.

Literature: "Axel Salto - Master of Stoneware", CLAY - Museum of Ceramic Art Denmark, ill. in model register fig. 253, p. 179. DKK 40,000-50,000 / € 5,350-6,700

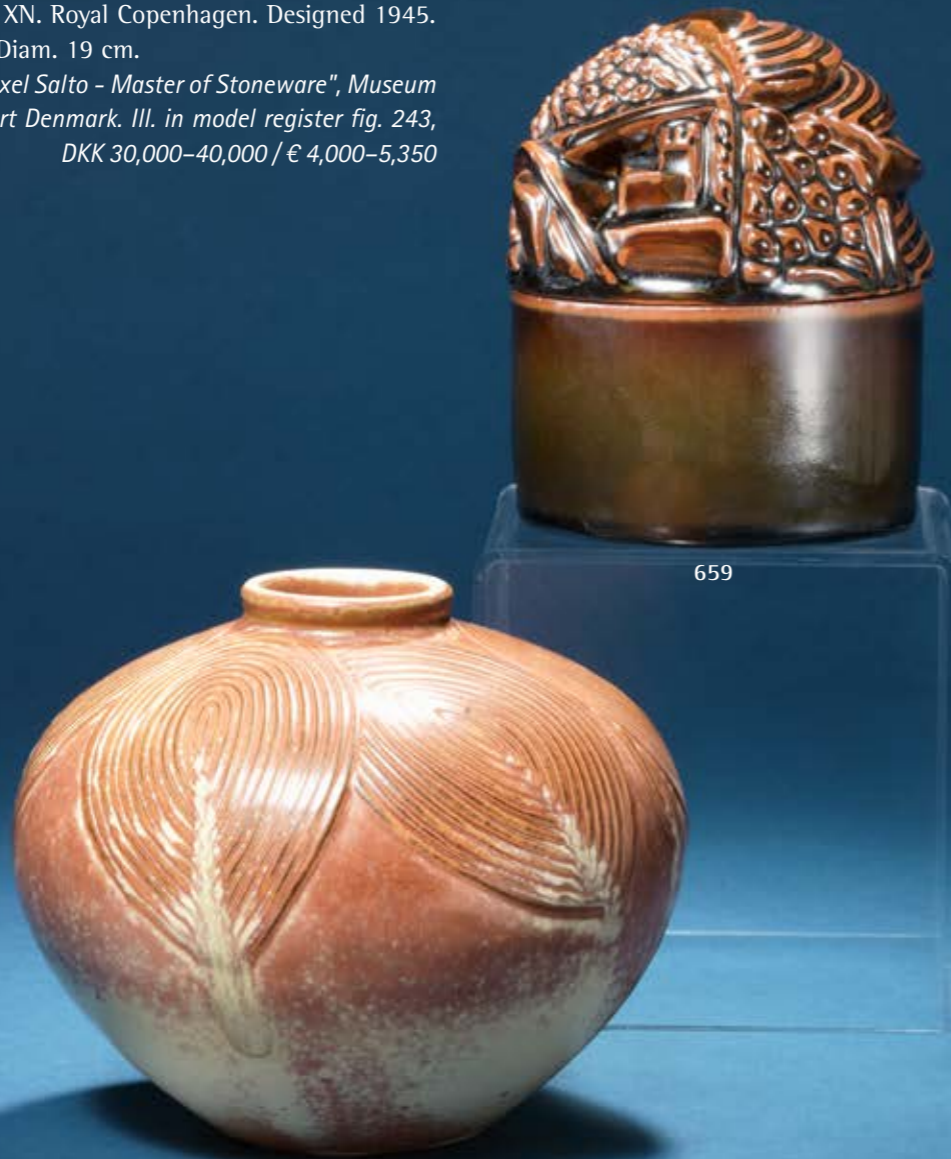
660

AXEL SALTO

b. Copenhagen 1889, d. Frederiksberg 1961

A round stoneware vase. The upper part with incised, stylized leaf decor. Decorated with reddish brown and light yellowish glaze. Signed Salto. The stoneware mass incised XN. Royal Copenhagen. Designed 1945. H. 15.5 cm. Diam. 19 cm.

Literature: "Axel Salto - Master of Stoneware", Museum of Ceramic Art Denmark. Ill. in model register fig. 243, p. 178. DKK 30,000-40,000 / € 4,000-5,350



660

659

661

AXEL SALTO

b. Copenhagen 1889, d. Frederiksberg 1961

A stoneware vase modelled with narrow mouth and partly budded surface. Decorated with Solfatara glaze. Signed Salto, 21441. Designed 1957. Made 1960. Royal Copenhagen. H. 19.5 cm.

Literature: "Axel Salto - Master of Stoneware", CLAY - Museum of Ceramic Art Denmark, ill. in model register fig. 297, p. 181.

DKK 100,000-125,000 / € 13,500-17,000



661

662

AXEL SALTO

b. Copenhagen 1889, d. Frederiksberg 1961

A round stoneware vase modelled in budded style. Decorated with Sung glaze. Signed Salto, 20329, the stoneware mass incised P169. Royal Copenhagen. Made 1961. H. 22.7 cm. Diam. 17 cm.

Literature: "Axel Salto - Master of Stoneware", CLAY - Keramikmuseum Danmark. Ill. with correct model no. 21329. fig. 285, p. 180.

DKK 80,000-100,000 / € 10,500-13,500



662

663

AXEL SALTO

b. Copenhagen 1889, d. Frederiksberg 1961

A stoneware vase modelled in sprouting style. Decorated with ochre brown glaze with rust-red elements. Signed Salto, 20701. Royal Copenhagen. Designed 1944. H. 18.5 cm. Diam. max. 12.5 cm.

Literature: "Axel Salto - Master of Stoneware", CLAY - Museum of Ceramic Art Denmark, ill. in model register fig. 206, p. 176.

DKK 30,000-40,000 / € 4,000-5,350

664

AXEL SALTO

b. Copenhagen 1889, d. Frederiksberg 1961

A group of three small stoneware vases modelled in sprouting style. Decorated with resp. Solfatara glaze (made 1958), geryish white glaze with reddish and grey elements (made 1965) and brownish rose glaze with greyish brown elements (not dated). Signed Salto, resp. 20679 and 5465. Royal Copenhagen. Designed 1944. H. 11.5-12 cm. (3)

Literature: "Axel Salto - Master of Stoneware", CLAY - Museum of Ceramic Art Denmark. Ill. in model register fig. 184, p. 175.

DKK 50,000 / € 6,700



663

664

665^{ARR}

AXEL SALTO

b. Copenhagen 1889, d. Frederiksberg 1961

"Den Tingene iboende Kraft" (The Inherent Power of Things). A rarely offered stoneware sculpture modelled with three conical "tubes" rising from a cylindrical base modelled in budded style. Decorated with Butterfly wing glaze. Signed Salto, 21375. Royal Copenhagen. Made 1975-1979. Designed 1956. H. 53 cm. Diam. 23.5 cm.

Literature: "Axel Salto - Master of Stoneware", CLAY - Museum of Ceramic Art Denmark, ill. pp. 86-87, 102, 148-149 and in model register fig. 289, p. 180.

DKK 1,000,000 / € 135,000



665



666
AXEL SALTO

b. Copenhagen 1889, d. Frederiksberg 1961

A stoneware table lamp, the lower part modelled in budded style. Decorated with Blue mussel glaze. Signed Salto, 21687. Made 1959. Designed 1958. Patinated bronze mounting and shade holder. H. excl. mounting 31 cm. H. incl. shade holder 61 cm.

Literature: "Axel Salto - Master of Stoneware", CLAY - Museum of Ceramic Art Denmark, ill. fig. 322, p. 182.

DKK 50,000-60,000 / € 6,700-8,050

666

667
AXEL SALTO

b. Copenhagen 1889, d. Frederiksberg 1961

A large, round stoneware vase modelled in budded style and with narrow mouth. Decorated with Sung glaze. Signed Salto, 21380. Royal Copenhagen. Made 1964. Designed 1956. H. 49 cm. Diam. 38 cm.

Literature: "Axel Salto - Master of Stoneware", CLAY - Museum of Ceramic Art Denmark, Ill. p. 155 and in model register p. fig. 291, p. 181.

DKK 100,000 / € 13,500



667

668^{ARR}
AXEL SALTO

b. Copenhagen 1889, d. Frederiksberg 1961

A round stoneware vase with incised branch- and leaf motifs. Decorated with greyish green glaze with some light grey elements. Signed Salto 1935, 1-22. Designed 1935. H. 14.5 cm. Diam. 13.5 cm.

Literature: "Axel Salto - Master of Stoneware", CLAY - Museum of Ceramic Art Denmark. Ill. in model register fig. 215, p. 177 with model no. 20710. DKK 15,000-20,000 / € 2,000-2,700

669
AXEL SALTO

b. Copenhagen 1889, d. Frederiksberg 1961

A round stoneware vase modelled with relief fruits and leaves. Decorated with blue, green, greyish white and brown speckled glaze. Signed Salto, 20709. Royal Copenhagen. Designed 1944. H. 15 cm. Diam. max. 22 cm.

Literature: "Axel Salto - Master of Stoneware", CLAY - Museum of Ceramic Art Denmark. Ill. p. 147 and in model register fig. 214, p. 177.

Literature: "Det brændende nu - Axel Salto", Kunstindustrimuseet, ill. p. 18. DKK 30,000-40,000 / € 4,000-5,350



668



669

670^{ARR}
AXEL SALTO

b. Copenhagen 1889, d. Frederiksberg 1961

A stoneware deer head, decorated with Sung glaze. Signed Salto. Royal Copenhagen. Designed 1946. H. 31.5 cm.

Literature: "Axel Salto - Master of Stoneware", CLAY - Museum of Ceramic Art Denmark, ill. p. 117 and in model register fig. 257, p. 179.

DKK 15,000-20,000 / € 2,000-2,700

671
AXEL SALTO

b. Copenhagen 1889, d. Frederiksberg 1961

A calabash shaped stoneware vase. Decorated with oxblood glaze. Signed Salto, 20740, 0.17. Royal Copenhagen. Designed 1945. H. 17.7 cm. Diam. max. 14 cm.

Literature: "Axel Salto - Master of Stoneware", CLAY - Museum of Ceramic Art Denmark. Ill. in model register fig. 245, p. 178. DKK 20,000 / € 2,700



671

670

672

672
AXEL SALTO

b. Copenhagen 1889, d. Frederiksberg 1961

A cylindrical stoneware vase modelled in budded style. Decorated with Olivin glaze. Signed Salto, 20702. Royal Copenhagen. Designed 1944. H. 8.4 cm. Diam. max. 10.7 cm.

Literature: "Axel Salto - Master of Stoneware", CLAY - Keramikmuseum Danmark, ill. in model register fig. 212, p. 177. DKK 15,000-20,000 / € 2,000-2,700

673

AXEL SALTO

b. Copenhagen 1889, d. Frederiksberg 1961

A round stoneware vase modelled in budded style. Decorated with Solfatara glaze. Signed Salto. Royal Copenhagen. Designed 1944. H. 27.3 cm. Diam. 25.5-27 cm.

Literature: "Axel Salto - Master of Stoneware", CLAY - Museum of Ceramic Art Denmark, ill. p. 85 and in model register fig. 216, p. 177.

Literature: "Det brændende nu - Axel Salto", Kunstindustrimuseet, ill. p. 23.

DKK 350,000 / € 47,000



673

674

AXEL SALTO

b. Copenhagen 1889, d. Frederiksberg 1961

A round stoneware vase modelled with branches, leaves and flowers. Decorated with Celadon glaze. Signed Salto, 20664. Royal Copenhagen. Made 1952. Designed 1944. H. 29 cm. Diam. 25 cm.

Provenance: Private collection, Denmark. The vase was a gift from Axel Salto and Gerda Åkesson to the current owner's parents in the 1950s.

Literature: "Axel Salto - Master of Stoneware", CLAY - Museum of Ceramic Art Denmark, ill. pp. 58-59 and in model register fig. 169, p. 174.

DKK 30,000-40,000 / € 4,000-5,350



674

675

AXEL SALTO

b. Copenhagen 1889, d. Frederiksberg 1961

A round stoneware vase modelled in sprouting style. Decorated with Sung glaze with blue elements. Signed Salto, 20701. Royal Copenhagen. Made 1965. Designed 1944. H. 19 cm. Diam. 11.7-12.5 cm.

Literature: "Axel Salto - Master of Stoneware", CLAY - Museum of Ceramic Art Denmark, ill. in model register fig. 206, p. 176.

DKK 40,000-50,000 / € 5,350-6,700



675

676

AXEL SALTO

b. Copenhagen 1889, d. Frederiksberg 1961

A circular stoneware bowl, the exterior modelled in fluted style. Decorated with Sung glaze with blue elements. Signed Salto, 20568. Royal Copenhagen. Made 1964. Designed 1944. H. 14.4-15 cm. Diam. 25 cm.

Literature: "Axel Salto - Master of Stoneware", CLAY - Museum of Ceramic Art Denmark, ill. in model register fig. 155, p. 174.

DKK 40,000 / € 5,350



676

677 ^{ARR}

AXEL SALTO

b. Copenhagen 1889, d. Frederiksberg 1961

A tall, circular stoneware vase modelled in budded style. Decorated with Sung glaze with blue elements. Signed Salto, 1936. Royal Copenhagen. Designed 1936. H. 26.5 cm. Diam. 19 cm.

Literature: "Axel Salto - Master of Stoneware", CLAY - Museum of Ceramic Art Denmark, ill. in model register fig. 170, p. 174.

In 1932, textile manufacturer C.C. Thomsen and his wife Mrs Esther Thomsen had their new home built at Bernsdorffsvej in Gentofte, north of Copenhagen. Arne Jacobsen, one of the young, pioneering architects of the time, was commissioned to design the villa. The couple selected the furnishings with care, an immense sense of quality and a keen eye for emerging trends.

The villa framed a home filled with furniture, paintings and decorative art created by names that posterity has since shown to be the prime movers of the Danish modernist art and design tradition. An interior characterised by reflecting the couple's veneration of Danish architecture and decorative art, with a particular emphasis on Axel Salto's ceramic works which up until now have remained in the family's ownership.

DKK 200,000 / € 27,000



677

678

AXEL SALTO

b. Copenhagen 1889, d. Frederiksberg 1961

A large, fruit shaped stoneware vase. Decorated with Sung glaze with blue elements. Signed Salto, 20819. Royal Copenhagen. Made 1969-1974. Designed 1947. H. 33 cm. Diam. max. 22 cm.

Literature: "Axel Salto - Master of Stoneware", CLAY - Museum of Ceramic Art Denmark, ill. in model register fig. 273, p. 180

DKK 300,000 / € 40,000



678

679

AXEL SALTO

b. Copenhagen 1889, d. Frederiksberg 1961

A circular stoneware bowl, the exterior modelled in fluted style. Decorated with Sung glaze. Signed Salto. Royal Copenhagen. H. 13.5-13.8 cm. Diam. 24-24.5 cm.

Literature: "Axel Salto - Master of Stoneware", CLAY - Museum of Ceramic Art Denmark, ill. in model register fig. 221, p. 177.

DKK 20,000-30,000 / € 2,700-4,000

680

AXEL SALTO

b. Copenhagen 1889, d. Frederiksberg 1961

A stoneware table lamp, modelled in budded style. Decorated with Sung glaze with blue elements. Signed Salto, 20659. Royal Copenhagen. Made 1967. Designed 1944. H. excl. socket 40.5 cm. H. incl. socket 47 cm.

Literature: "Axel Salto - Master of Stoneware", CLAY - Museum of Ceramic Art Denmark. Ill. in model register fig. 164, p. 174.

DKK 15,000-20,000 / € 2,000-2,700



679



680

681

AXEL SALTO

b. Copenhagen 1889, d. Frederiksberg 1961

A round stoneware vase modelled with branches. Decorated with Sung glaze. Signed Salto, 20560. Royal Copenhagen. Made 1951. Designed 1943. H. 19.5 cm. Diam. 20.5 cm.

Literature: "Axel Salto - Master of Stoneware", CLAY - Museum of Ceramic Art Denmark. Ill. p. 64 and in model register fig. 148, p. 173.

DKK 50,000 / € 6,700



681



682

AXEL SALTO

b. Copenhagen 1889, d. Frederiksberg 1961

A stoneware vase modelled in sprouting style. Decorated with Blue mussel glaze. Signed Salto, 20810. Royal Copenhagen. Made 1957. Designed 1946. H. 24.5 cm. Diam. max. 19 cm.

Literature: "Axel Salto - Master of Stoneware", *CLAY - Museum of Ceramic Art Denmark*, ill. fig. 264, p. 179. DKK 100,000-120,000 / € 13,500-16,000



682

683

AXEL SALTO

b. Copenhagen 1889, d. Frederiksberg 1961

A cylindrical stoneware vase, modelled in budded style. Decorated with Sung glaze. Signed Salto, 20670. Royal Copenhagen. Designed 1935. H. 20.5–20.7 cm. Diam. 9.5 cm.

Literature: "Axel Salto - Stentøjsmesteren", CLAY - Museum of Ceramic Art Denmark, ill. in model register fig. 175, p. 175.

DKK 25,000–30,000 / € 3,350–4,000

684

AXEL SALTO

b. Copenhagen 1889, d. Frederiksberg 1961

A round stoneware vase with incised branch- and leaf motifs. Decorated with Solfatara glaze. Signed Salto. Designed 1935. H. 15.3 cm. Diam. 14 cm.

Literature: "Axel Salto - Master of Stoneware", CLAY - Museum of Ceramic Art Denmark. Ill. in model register fig. 215, p. 177 with model no. 20710.

DKK 20,000–25,000 / € 2,700–3,350

685

AXEL SALTO

b. Copenhagen 1889, d. Frederiksberg 1961

A round stoneware vase. The upper part with incised, stylized leaf decor. Signed Salto with faint incised dating. Designed 1945. Royal Copenhagen. H. 17 cm. Diam. 19 cm.

Literature: "Axel Salto - Stentøjsmesteren", CLAY - Museum of Ceramic Art Denmark. Ill. in model register fig. 243, p. 178.

DKK 40,000–50,000 / € 5,350–6,700



686^{ARR}

AXEL SALTO

b. Copenhagen 1889, d. Frederiksberg 1961

A rectangular fresco with plant motif. Decorated in shades of ochre, rose, green and grey. Mounted in an iron frame. Unsigned. Made approx. 1940. Unique. H. 31.5 cm. W. 41.4 cm. D. 2.5 cm. *DKK 25,000 / € 3,350*

687^{ARR}

AXEL SALTO

b. Copenhagen 1889, d. Frederiksberg 1961

A cylindrical stoneware lid jar modelled with horizontal, fluted relief decor. Decorated with Effet de nuit glaze. Signed Salto, 1941. Royal Copenhagen. H. 26.5 cm. Diam. 20.5 cm. *DKK 60,000 / € 8,050*



686



687

688

AXEL SALTO

b. Copenhagen 1889, d. Frederiksberg 1961

A stoneware vase modelled with narrow neck, the lower part with incised, fluted relief decor. Decorated with Solfatara glaze. Signed Salto, 20737. Royal Copenhagen. Made 1958. Designed 1945. H. 27.3 cm.

Literature: "Axel Salto - Master of Stoneware", CLAY - Museum of Ceramic Art Denmark. Ill. p. 93 and in model register fig. 242, p. 178. DKK 30,000 / € 4,000

689

AXEL SALTO

b. Copenhagen 1889, d. Frederiksberg 1961

A cylindrical stoneware vase, modelled in budded style. Decorated with Solfatara glaze. Signed Salto, 20670. Royal Copenhagen. Made 1957. Designed 1935. H. 20.3-20.5 cm. Diam. max. 9.5 cm.

Literature: "Axel Salto - Master of Stoneware", CLAY - Museum of Ceramic Art Denmark, ill. in model register fig. 175, p. 175.

In 1932, textile manufacturer C.C. Thomsen and his wife Mrs Esther Thomsen had their new home built at Bernsdorffsvej in Gentoft, north of Copenhagen. Arne Jacobsen, one of the young, pioneering architects of the time, was commissioned to design the villa. The couple selected the furnishings with care, an immense sense of quality and a keen eye for emerging trends.

The villa framed a home filled with furniture, paintings and decorative art created by names that posterity has since shown to be the prime movers of the Danish modernist art and design tradition. An interior characterised by reflecting the couple's veneration of Danish architecture and decorative art, with a particular emphasis on Axel Salto's ceramic works which up until now have remained in the family's ownership. DKK 30,000-40,000 / € 4,000-5,350

690

AXEL SALTO

b. Copenhagen 1889, d. Frederiksberg 1961

A round stoneware vase modelled in budded style. Decorated with Solfatara glaze. Signed Salto. Royal Copenhagen. Designed 1935. H. 18 cm.

Literature: "Axel Salto - Master of Stoneware", CLAY - Museum of Ceramic Art Denmark. Ill. in model register fig. 213, p. 177 with model no. 20708. DKK 40,000 / € 5,350



691

AXEL SALTO

b. Copenhagen 1889, d. Frederiksberg 1961

A large stoneware vase modelled with "Living stones". Decorated with Celadon glaze. Signed Salto, S.K.8. Royal Copenhagen. H. 38.5 cm. Diam. max. 26.5 cm.

Literature: Axel Salto: "Den spirende stil", ill. p. 83.

Literature "Axel Salto - Master of Stoneware", CLAY - Museum of Ceramic Art Denmark, ill. p. 140 and in model register fig. 220 (model no. 20715), p. 177.

DKK 200,000 / € 27,000



691

MODERN
DECORATIVE ART

Thursday 19 September

Lot 692 - 702





692

692^{ARR}
ALEV EBÜZZIYA SIESBYE

b. Istanbul 1938

A circular stoneware bowl decorated with greyish white glaze. Signed alev. Royal Copenhagen. Made 1975-1979. Unique. H. 14.5-15 cm. Diam. 26 cm.

DKK 30,000 / € 4,000

693^{ARR}
BODIL MANZ

b. Frederiksberg 1943

A large, oval porcelain vessel. The outside and upper rim with brownish black glazed geometric decor. Signed Bodil Manz. Unique. H. 17.5-18 cm. W. 33 cm. L. 41 cm.

DKK 25,000 / € 3,350



693



694

694^{ARR}
ALEV EBÜZZIYA SIESBYE

b. Istanbul 1938

A circular stoneware bowl decorated with transparent green glaze with blue elements. Unglazed line decor and base. Signed alev 74, 10. Unique. H. 13.9-14.2 cm. Diam. 25 cm.

DKK 30,000-40,000 / € 4,000-5,350

695^{ARR}

RUT BRYK

b. 1916, d. 1999

A large, rectangular stoneware wall relief. Composed by square tiles with embossed relief decor and flowers. Partly decorated with turquoise blue, light blue, green and greyish black glaze. Made by Arabia, Finland approx. 1960. Unique. Mounted on a wooden board with iron brackets, marked verso Arabia, Finland. H. 83.5 cm. W. 74.5 cm. D. 5 cm.

Provenance: Danish private collector. Acquired by the current owner at Københavns Auktioner in approx. 1979. DKK 40,000–50,000 / € 5,350–6,700



695

696^{ARR}

ARJE GRIEGST

b. København 1938, d. 2016

"Havterrin"/(Ocean Tureen). A large stoneware tureen with cover. Decorated with Celadon glaze with some blue and greyish black elements. Unsigned. Made by Royal Copenhagen. H. 31 cm. Diam. approx. 36-39 cm.

Provenance: Acquired by the current owner at Royal Copenhagen, Amager Torv in the late 1980s. DKK 60,000 / € 8,050



696



697

697^{ARR}

KRESTEN BLOCH

b. Næstved 1912, d. København 1970

KNUD ANDERSEN

b. 1892, d. 1966

A stoneware lid jar, decorated with Oxblood glaze. Signed monogram. Royal Copenhagen. Patinated and partly gilt bronze lid and base. Marked monogram KA for Knud Andersen. Royal Copenhagen. H. incl. lid and base 27 cm. Diam. 21.5 cm.

DKK 15,000–20,000 / € 2,000–2,700



699

699^{ARR}

NILS THORSSON

b. Eslöv, Skåne County 1898, d. 1975

KNUD ANDERSEN

b. 1892, d. 1966

A round stoneware lid jar with relief deer and plant motif. Decorated with Celadon glaze. Signed monogram. Royal Copenhagen. Patinated and partly gilt bronze lid and base. Base marked monogram KA for Knud Andersen. Royal Copenhagen. H. 22.5 cm. Diam. 19 cm.

DKK 25,000–30,000 / € 3,350–4,000



698

698^{ARR}

NIKOLAI TIDEMAND

b. Stavanger 1888, d. 1975

A large stoneware lid jar, decorated with Solfatara glaze. Signed monogram, 1937. Royal Copenhagen. Patinated and partly gilt bronze lid. H. 34 cm. Diam. 33 cm.

DKK 20,000–25,000 / € 2,700–3,350

700^{ARR}

NILS THORSSON

b. Eslöv, Skåne County 1898, d. 1975

KNUD ANDERSEN

b. 1892, d. 1966

A round stoneware lid jar, decorated with Butterfly wing glaze. Signed monogram. Royal Copenhagen. Made 1962. Patinated and partly gilt bronze lid and base. Not marked. H. 19 cm. Diam. 12.5 cm.

DKK 15,000 / € 2,000



700

Thursday 19 September

Lot 703 - 846



701

701^{ARR}
KNUD ANDERSEN

b. 1892, d. 1966

CARL HALIER

b. 1873, d. 1948

A round stoneware lid jar modelled with relief decor. Decorated with Oxblood glaze with a few turquoise green elements. Signed monogram, 6-3 1931. Royal Copenhagen. Patinated and partly gilt bronze lid. Marked monogram KA for Knud Andersen, Royal Copenhagen. H. 18 cm. Diam. 13 cm. *DKK 15,000 / € 2,000*



702

702^{ARR}
KNUD ANDERSEN

b. 1892, d. 1966

CARL HALIER

b. 1873, d. 1948

A round stoneware lid jar decorated with Oxblood glaze with metallic-green elements. Signed monogram, 9-8 1936. Royal Copenhagen. Patinated and partly gilt bronze lid and base. Marked monogram KA for Knud Andersen. Royal Copenhagen. H. incl. lid and base 31 cm. Diam. 21 cm.

DKK 25,000-30,000 / € 3,350-4,000



703

TH. VALENTINER

A pair of adjustable metal floor lamps. Conical, green lacquered metal shade. Model THV-376. Manufactured 1960s for retailer Poul Dinesen. H. 135 cm. L. arm 62 cm. (2)

DKK 20,000 / € 2,700



703

704

HANS J. WEGNER

b. Tønder 1914, d. Gentofte 2007

“Flag Halyard Chair”. Easy chair with white painted steel frame and black rubber “shoes”. Matte chromed steel top with flag halyard. Headrest upholstered with orange wool, later white sheepskin included. Model GE 225. Designed 1950. Manufactured approx. 1967 by Getama, Gedsted. Provenance: Acquired by present owner 1967.

Model presented at The Arts & Crafts Spring Exhibition at Designmuseum Danmark, 1950.

Literature: “Dansk Kunsthåndværk”, no. 5, 1950, ill. p. 86.

Literature: Noritsugu Oda: “Danish Chairs”, 1999, ill. p. 112.

DKK 60,000–80,000 / € 8,050–10,500



704



705

705 ©
HANS J. WEGNER

b. Tønder 1914, d. Gentofte 2007

“China Chair”. A Brazilian rosewood armchair. Loose seat cushion upholstered with patinated natural leather, fitted with buttons. Model 4283. Designed 1944. Manufactured 1968 by Fritz Hansen, with maker's label.

Literature: Noritsugu Oda, "Danish Chairs", 1999. p. 104–105. DKK 40,000–50,000 / € 5,350–6,700

706
POUL HENNINGSEN

b. Ordrup 1894, d. Hillerød 1967

“Question mark floor lamp” “PH-3/2”. Adjustable, patinated, browned brass floor lamp with duco lacquered base. Shade fitting marked “Patented” and “PH-2”. Yellow painted frosted glass shades, frosted glass bottom bowl. Manufactured 1930s by Louis Poulsen. H. 152 cm.

Literature: "Light Years Ahead", model ill. p. 164. DKK 40,000–50,000 / € 5,350–6,700

707 ©
HANS J. WEGNER

b. Tønder 1914, d. Gentofte 2007

“RY 25”. A Brazilian rosewood sideboard with round, tapering legs. Front with two tambour doors, oak interior with pull-out trays and adjustable shelves. Designed 1959. Manufactured 1963 by Ry Møbler, stamped. H. 79 cm. W. 201 cm. D. 49 cm.

DKK 30,000 / € 4,000



707



706



708

708
HANS J. WEGNER

b. Tønder 1914, d. Gentofte 2007

“JH 512”. A patinated oak folding chair. Seat and back with woven cane. Wall mounting included. Model JH 512. Designed 1949. Made approx. 1950s by cabinetmaker Johannes Hansen, not stamped. (2)

Model presented at The Copenhagen Cabinetmakers' Guild Exhibition at Designmuseum Danmark, 1949.

Literature: Grete Jalk [ed.]. "40 Years of Danish Furniture Design", Vol. 3, pp. 98–99.

DKK 30,000–40,000 / € 4,000–5,350

709
HANS J. WEGNER

b. Tønder 1914, d. Gentofte 2007

“Hammock Chair”. Oak chaise longue, seat and back with flag halyard with brass fittings. Model GE 2. Manufactured 1960–1970s by Getama, Gedsted. L. 183 cm.

Model presented at The Scandinavian Furniture Fair in Malmö, Sweden 1967.

Literature: Noritsugu Oda: "Danish Chairs", ill. and referred to on p. 123.

Literature: "Mobilia", no. 143, 1967.

DKK 25,000–30,000 / € 3,350–4,000



710

710
HANS J. WEGNER

b. Tønder 1914, d. Gentofte 2007

“CH 27”. A pair of oak easy chairs. Seat and back with woven cane. Designed 1949. Manufactured approx. 1960s by Carl Hansen & Søn. (2)

Litteratur: Dansk Kunsthåndværk nr. 11, november 1952.

Litteratur: Bygge og Bo, hæfte 4. Vinter 1951–1952.

DKK 60,000 / € 8,050



709

711
HANS J. WEGNER

b. Tønder 1914, d. Gentofte 2007

"AT 304". Teak dining table with fold down leaves. Oak cross legs with brass stretchers. Manufactured 1950–1960s by cabinetmaker Andreas Tuck, stamped. H. 71 cm. L. 128/183/238 cm. W. 86 cm.

DKK 30,000–40,000 / € 4,000–5,350



711

712
HANS J. WEGNER

b. Tønder 1914, d. Gentofte 2007

"Cowhorn chair". Patinated oak chair. Seat upholstered with patinated natural leather. Model JH 505. Designed 1952. Made 1950–1960s by cabinetmaker Johannes Hansen, marked with metal tag.

Model presented at the Copenhagen Cabinetmakers' Guild Exhibition at Designmuseum Danmark, 1952.

Literature: Grete Jalk [ed.]: "40 Years of Danish Furniture Design", 1987, vol. 3, ill. pp. 212–213. DKK 30,000 / € 4,000



712

713
HANS J. WEGNER

b. Tønder 1914, d. Gentofte 2007

"Cowhorn chair". Patinated oak chair. Seat upholstered with patinated natural leather. Model JH 505. Designed 1952. Made 1950–1960s by cabinetmaker Johannes Hansen, marked with metal tag.

Model presented at the Copenhagen Cabinetmakers' Guild Exhibition at Designmuseum Danmark, 1952.

Literature: Grete Jalk [ed.]: "40 Years of Danish Furniture Design", 1987, vol. 3, ill. pp. 212–213. DKK 30,000 / € 4,000



713



714

**714
NANNA DITZEL**

b. Copenhagen 1923, d. s.p. 2005

JØRGEN DITZEL

b. Frederiksberg 1921, d. København 1961

Freestanding teak desk, front with four drawers in rail. Model 93-4. Designed 1955. Manufactured 1960-1970s by Søren Willadsen, Vejen. H. 74 cm. L. 175 cm. W. 75 cm.

Literature: Bygge & Bo, June 1956.

DKK 20,000-25,000 / € 2,700-3,350

**715
ARNE JACOBSEN**

b. Copenhagen 1902, d. s.p. 1971

"Seven Chair". A swivel armchair with steel frame with castors. Seat, back and armrests upholstered with patinated Niger leather. Model 3217. Designed 1955. Manufactured 1960-1970s by Fritz Hansen, stamped.

DKK 20,000 / € 2,700



715

**716
ARNE JACOBSEN**

b. Copenhagen 1902, d. s.p. 1971

"The Egg". Easy chair and matching stool with profiled aluminum base. Sides, back and loose seat cushion upholstered with original patinated cognac coloured leather. Model 3317 and 3127. Designed 1958. Manufactured 1960s by Fritz Hansen, stamped. (2)

DKK 30,000-40,000 / € 4,000-5,350



716

717
ERIK OLE JØRGENSEN

b. Frederiksberg 1925, d. Vedbæk 2002

Desk chair with height adjustable, chromed tubular steel frame, mounted on castors. Sides, seat and back upholstered with black leather. Designed and made approx. 1950-1960s by Georg Jørgensen.

DKK 20,000 / € 2,700



718
BENT BILLE

b. 1918

"Bille lamp". Black lacquered aluminium pendant. Model no. 16519. Manufactured 1950s by Louis Poulsen. H. 21 cm. L. 50 cm.

Literature: "LP-Nyt" oktober 1954, p. 1242.

DKK 30,000-40,000 / € 4,000-5,350



719
POUL KJÆRHOLM

b. Østervrå 1929, d. Hillerød 1980

"Professor Table". Early freestanding desk with black lacquered iron frame. Oregon pine top. Made 1950s by Rud. Rasmussen Cabinetmakers. H. 68 cm. L. 185 cm. W. 85 cm.

Model designed for the Academy of Fine Arts in Copenhagen.

Literature: "Poul Kjærholm", Arkitektens Forlag, 1999, ill. p. 176.

DKK 20,000-25,000 / € 2,700-3,350

720
POUL KJÆRHOLM

b. Østervrå 1929, d. Hillerød 1980

“PK 91”. Folding stool with matte chromed steel frame. Seat with black leather. Designed 1961. Manufactured 1970s by E. Kold Christensen, stamped.

DKK 30,000–40,000 / € 4,000–5,350



720



722

721^{ARR}
ANDERS HERMANSEN

b. 1960

Sculptural steel chaiselongue with woven black nylon girths. Designed and manufactured approx. 1989 for Paustian. L. 185 cm.

DKK 20,000–25,000 / € 2,700–3,350



721

722
POUL KJÆRHOLM

b. Østervrå 1929, d. Hillerød 1980

“PK 61”. Coffee table with chromed steel frame. Square black slate top. Designed 1956. Manufactured approx. 1970s by E. Kold Christensen, not stamped. H. 32 cm. W./L. 80 cm. *DKK 20,000–25,000 / € 2,700–3,350*



723

723
POUL KJÆRHOLM

b. Østervrå 1929, d. Hillerød 1980

“PK 54”. Dining table with cubus frame of steel. Circular top of flintrolled light/grey marble. Designed 1963. Manufactured 1970s by E. Kold Christensen, stamped by maker. H. 65 cm. Diam. 140 cm.

Literature: “Poul Kjærholm”, Arkitektens Forlag, 1999, pp. 20–21, 112–115 and 179. Literature: Frederik Sieck: “Dansk Møbelkunst”, ill. p. 151.

DKK 50,000 / € 6,700



724

724
POUL KJÆRHOLM

b. Østervrå 1929, d. Hillerød 1980

“PK 9”. A set of six chairs with chromed steel frame. Seat and back upholstered with original, patinated cognac coloured leather. Designed 1960. Manufactured 1970–1980s by E. Kold Christensen, stamped. (6)

DKK 150,000–175,000 / € 20,000–23,500



725

725
INGRID DESSAU, ATTRIBUTED TO

b. Svalöv 1923, d. 2000, maiden name Ingrid Peterson

"Vintergäck". Handwoven wool carpet in "rölakan" flat weave technique. Geometric pattern in yellow, pink, green, blue and white on grey base and with brown border. Not signed. Presumably made by Kristianstad Läns Hemslöjd, approx. 1940–1950s. L. 295 cm. W. 195 cm.

DKK 35,000–40,000 / € 4,700–5,350



726

726 * ARR
PALLE SUENSON

b. 1904, d. 1986

Height adjustable pendant with brushed metal shade, perforated brass top and rim, inside white lacquered. Brass canopy. Designed for restaurant Au coq d'or, Copenhagen. Made 1940. H. 28 cm. Diam. 50.5 cm.

DKK 20,000–25,000 / € 2,700–3,350

727
PIET HEIN

b. 1905, d. 1996

Set of five bar stools with chromed steel frame. Circular seat upholstered with brown Niger leather. Model FL 9511. Designed 1961. Manufactured 1979 by Fritz Hansen, two with maker's label. H. 81–82 cm. (5)

DKK 20,000 / € 2,700



727



728

728
ALVAR AALTO

b. Kuortane 1898, d. Helsinki 1976

White lacquered metal ceiling light with two cylindrical shades. Manufactured 1962 by Idman, marked. H. 23 cm. L. 115 cm. W. 35 cm. Cylinder diam. 19 cm.

Provenance: Enso Gutzeit's head office in Helsinki, designed by Alvar Aalto in 1962.

DKK 15,000–20,000 / € 2,000–2,700

729 ©
KAARE KLINT

b. Frederiksberg 1888, d. Copenhagen 1954

Brazilian rosewood coffee table with circular top. Profiled frame and underlying square shelf. Model 6687. Designed 1930. Made 1980s by Rud. Rasmussen Cabinetmakers, with maker's paper label. H. 52 cm. Diam. 80 cm.

KK label no. 42963.

Literature: Gorm Harkær, Klintiana: "Kaare Klint", vol. 2, ill. p. 55.

DKK 12,000–15,000 / € 1,600–2,000



729



730

730
DANISH CABINETMAKER

A pair of easy chairs with dark stained legs. Seat, sides and back upholstered with light brown sheepskin, back fitted with buttons. Made 1940-1950s, Denmark. (2)

DKK 60,000 / € 8,050

731
MOGENS KOCH

b. Frederiksberg 1898, d. Copenhagen 1992

Solid mahogany chest of drawers. Front with eight drawers in three sizes with round, carved handles. Made 1990s by Rud. Rasmussen Cabinetmakers, with maker's paper label. H. 81 cm. W. 76 cm. D. 36 cm. *KK label no. 48685.*

DKK 25,000–30,000 / € 3,350–4,000



731



732

732^{ARR}
KAARE KLINT

b. Frederiksberg 1888, d. Copenhagen 1954

“The Red Chair”. Set of eight chairs and a pair of armchairs with profiled mahogany frame. Seat and back upholstered with cognac coloured leather. Model 4751 and 3758A. Designed 1927 and 1933. Made approx. 1935–1940 by Rud. Rasmussen Cabinetmakers, with maker's paper label. (10) *KK label no. 16081 / indistinctly numbered.*

Literature: Gorm Harkær, Klintiana: “Kaare Klint”, vol. 2, ill. and mentioned p. 79–80. DKK 30,000–40,000 / € 4,000–5,350

733

MOGENS KOCH

b. Frederiksberg 1898, d. Copenhagen 1992

Mahogany wingback chair with matching footstool. Sides, back and loose cushions upholstered with patinated natural leather, fitted with leather covered nails. Designed 1936. Made 1979 by upholsterer Ivan Schlechter. (2)

Model presented at The Copenhagen Cabinetmakers' Guild Exhibition at Designmuseum Danmark, 1936.

Literature: Grete Jalk [ed.]: "40 Years of Danish Furniture Design", vol. 1, referred to and ill. pp. 252-253.

DKK 50,000-60,000 / € 6,700-8,050



734

KAARE KLINT

b. Frederiksberg 1888, d. Copenhagen 1954

Freestanding two seater sofa on six-legged, profiled mahogany cross-frame. Sides, seat and back upholstered with natural leather. Model 4118. Designed 1930. Made approx. 1980s by Rud. Rasmussen Cabinetmakers. L. 134 cm.

Literature: Gorm Harkær, Klintiana: "Kaare Klint", vol 2, p. 93.

DKK 30,000-40,000 / € 4,000-5,350

735

KAARE KLINT

b. Frederiksberg 1888, d. Copenhagen 1954

EDVARD KINDT-LARSEN

b. Frederiksberg 1901, d. Gentofte 1982

“Mix”. Mahogany easy chair. Sides, back and loose cushions upholstered with patinated natural leather. Model 4396. Designed 1937. Made approx. 1980s by Rud. Rasmussen Cabinetmakers.

Literature: Gorm Harkær, Klintiana: “Kaare Klint”, ill. and mentioned in vol. 1, pp. 361–363 and vol. 2, p. 86.

DKK 25,000–30,000 / € 3,350–4,000



735



737



737

KAARE KLINT

b. Frederiksberg 1888, d. Copenhagen 1954

EDVARD KINDT-LARSEN

b. Frederiksberg 1901, d. Gentofte 1982

“Mix”. A pair of mahogany easy chairs. Sides, back and loose cushions upholstered with patinated natural leather. Model 4396. Designed 1937. Made approx. 1980s by Rud. Rasmussen Cabinetmakers. (2)

Literature: Gorm Harkær, Klintiana: “Kaare Klint”, ill. and mentioned in vol. 1, pp. 361–363 and vol. 2, p. 86.

DKK 50,000–60,000 / € 6,700–8,050

736

MOGENS LASSEN

b. Copenhagen 1901, d. Holte 1987

“The Egyptian Table”. Circular oak coffee table with foldable frame. Top with raised edge, brass fittings. Designed 1935. Made approx. 1980s by cabinetmaker Rud. Rasmussen Cabinetmakers. H. 52.5 cm. Diam. 85 cm.

Literature: Grete Jalk [ed.]: “40 Years of Danish Furniture Design”, vol. 2, p. 115.

DKK 20,000 / € 2,700



736



738

738
POUL HENNINGSEN

b. Ordrup 1894, d. Hillerød 1967

"PH-4/3". Table lamp with patinated brass frame marked "Pat. Appl.". Thick switch house. Green/white copper top and middle shade, green/gold copper bottom shade. Manufactured 1926-1928 by Louis Poulsen. H. 54 cm.

DKK 60,000-80,000 / € 8,050-10,500

739

VILHELM LAURITZEN

b. Slagelse 1894, d. Gentofte 1984

Rare, sculptural Cuban mahogany armchair with brass fittings. Seat and back upholstered with striped wool. Designed and made approx. 1940 by Rud. Rasmussen Cabinetmakers.

Provenance: Radiohuset, Copenhagen.

The chair was designed for "Radiohuset" and used in the "radio broadcasting boardroom" and selected offices in the building.

Literature: Lisbeth Balslev Jørgensen a.o.: "Vilhelm Lauritzen- En moderne arkitekt", 1994, ill. pp. 252 and 267. DKK 60,000-80,000 / € 8,050-10,500



739

740

VILHELM LAURITZEN

b. Slagelse 1894, d. Gentofte 1984

A pair of patinated oak "musician's chairs", curved legs with brass "shoes". Height adjustable seat and back upholstered with green wool. (2)

Made for Radiohuset, Copenhagen.

DKK 30,000–40,000 / € 4,000–5,350



740



741

741

POUL HENNINGSEN

b. Ordrup 1894, d. Hillerød 1967

"PH-3/2". Patinated browned brass table lamp. Marked "Pat. Appl.". Single layer opaline glass middle shade and top shade, frosted glass bottom shade. Manufactured 1926–1928 by Louis Poulsen. H. 44 cm.

Version without switch house.

DKK 35,000–40,000 / € 4,700–5,350



742

742
SCANDINAVIAN DESIGN
 Large desk lamp with cream painted metal base and shade. Patinated brass "double" arm, mounted with handle covered with pleated, patinated leather. Made approx. 1940-1950s, presumably in Sweden. H. 54 cm. W. 72 cm. D. 35 cm.
 DKK 15,000-20,000 / € 2,000-2,700



743

743
PETER HVIDT
 b. Copenhagen 1916, d. s.p. 1986
ORLA MØLGAARD-NIELSEN
 b. Ålborg 1907, d. Hellerup 1993
 Freestanding solid teak desk with round, tapering legs and oval stretchers. Front with two drawers with brass fittings. Model 310. Designed 1955. Made approx. 1955 by Søborg Møbler. H. 72 cm. L. 170 cm. W. 79 cm.
 Provenance: Architect Peter Hvidt, hence by descent in the family.
 DKK 30,000-40,000 / € 4,000-5,350



744

744
FINN JUHL
 b. Frederiksberg 1912, d. Ordrup 1989
 "FJ 45". A teak easy chair. Sides, back and loose seat cushion upholstered with light blue wool, natural leather edgings. Designed 1945. Made approx. 1950s by cabinet-maker Niels Vodder, stamped by maker.
 DKK 80,000-100,000 / € 10,500-13,500

745

FINN JUHL

b. Frederiksberg 1912, d. Ordrup 1989

"BO 63" and "BO 72". Set of 14 stained beech chairs comprising 12 side chairs and a pair of matching armchairs. Seat and back upholstered with patinated Niger leather. Designed resp. 1949 and 1950. Manufactured 1950-1960s by Bovirke. (14)

Literature: "Finn Juhl Memorial Exhibition", Japan 1990, ill. p. 137.

Literature: The Magazine "Dansk Kunsthåndværk" nr. 12, 1951.

DKK 200,000 / € 27,000



745



746

746
BARBRO NILSSON

b. Malmö 1899, d. Höganäs 1983

“Spättan, blå” (The Plaice). Handwoven wool carpet in “gobeläng” flatweave technique. Pattern in shades of blue with white and purple elements. Signed BN and AB MMF. Designed 1943. Made after 1943 by AB Märta Måås-Fjetterström, Sweden. L. 258 cm. W. 102 cm.

Literature: Viggo Steen Møller: “En bok om Barbro Nilsson”, Höganäs 1977, mentioned pp. 35 and 94, ill. pp. 49 and 66-67.

Literature: Liljevalchs konsthalls catalogue: “Märta Måås-Fjetterström, Märta flyger igen, 90 år med Märta Måås-Fjetterström”, Värnamo 2009, ill. pp. 141 and 143.

Literature: Tyra Lundgren: “Märta Måås-Fjetterström och väv-verkstaden i Båstad”, Stockholm 1968, mentioned p. 115. DKK 50,000 / € 6,700



747

747
KNUD FÆRCH

b. Brønderslev 1924, d. Sorø 1992

Set of six teak and oak armchairs. Seat upholstered with brown coloured leather. Model 251. Designed 1969. Manufactured 1970s by Slagelse Møbelværk. (6)
DKK 25,000–30,000 / € 3,350–4,000



748

748
FINN JUHL

b. Frederiksberg 1912, d. Ordrup 1989

“Judas Table”. Oval teak dining table with extension and two extra leaves. Reverse side of top with profiled rim. Designed 1948. Made approx. 1950s by cabinetmaker Niels Vodder, stamped. H. 72 cm. L. 200/245/290 cm. W. 140 cm.

DKK 100,000–120,000 / € 13,500–16,000



749
FINN JUHL

b. Frederiksberg 1912, d. Ordrup 1989

“Fireplace Chair”. A pair of teak easy chairs with cross bars. Seat and back upholstered with light wool, loose seat cushion upholstered with blue wool. Model BO 46. Designed 1946. Made approx. 1950-1960s by Bovirke. (2)

DKK 100,000 / € 13,500



749



750

750
FRITZ HANSEN
"DAN". A teak desk chair with swivel frame. Seat and back upholstered with Niger leather, back fitted with brass nails. Manufactured 1930-1940s by Fritz Hansen.
DKK 25,000 / € 3,350



752

752
FRITZ HANSEN
Console / work table with stained beech frame. Rectangular solid pine top with profile along edges. Manufactured 1930s by Fritz Hansen, stamped. H. 74 cm. W. 69 cm. L. 160 cm.
DKK 20,000-25,000 / € 2,700-3,350



751

751
POUL HENNINGSEN
b. Ordrup 1894, d. Hillerød 1967
"PH-5/5". Pendant with patinated brass socket house marked "Pat. Appl.". Copper shades with lacquered inside. Manufactured 1926-1928 by Louis Poulsen.
DKK 60,000 / € 8,050



753

753
KARL DANGEL

b. 1912, d. 1977

Handwoven wool carpet in "rölakan" flat weave technique. Organic motif in polychrome nuances on grey base and with red and brown border. Signed CD. Made middle of 20th century. L. 235 cm. W. 150 cm. *DKK 25,000 / € 3,350*

754
POUL HENNINGSEN

b. Ordrup 1894, d. Hillerød 1967

"PH-4/3". Patinated brass table lamp. Yellow/white copper top shade, frosted glass middle and bottom shade. Manufactured 1930s by Louis Poulsen. H. 54 cm.

DKK 30,000-40,000 / € 4,000-5,350



754

755
DANISH FURNITURE DESIGN

Oak wingback chair. Seat and back upholstered with long-haired lambskin. Made 1940-1950s, Denmark.

DKK 20,000 / € 2,700



755

756

DANISH FURNITURE DESIGN

Set of six round stained beech chairs. Upholstered with patinated Niger leather fitted with nails. Manufactured approx. 1950s for Porexim, marked with label. (6)

DKK 35,000–40,000 / € 4,700–5,350



756



757



757^{ARR}

KAJ GOTTLOB

b. Copenhagen 1887, d. 1976

Unique three seater sofa with carved Cuban mahogany frame, front with two drawers, round handles. Sides, seat and back upholstered with sand coloured linen. Made and designed 1918 by cabinetmaker A.J. Iversen. L. 200 cm.

Provenance: The sofa was designed and made for Gottlob's own home where it stood until he passed away in 1976. Hence by descent in the family.

Acquired from Kaj Gottlob's family by previous owner.

Acquired at Bruun Rasmussen Auctioneers, auction 1909, lot no. 555, February 2019.

Kaj Gottlob designed the present sofa in 1918 for his home at Rosenvængets Hovedvej 29 in Copenhagen where it was used until Gottlob passed away in 1976. It was originally designed and made with black, slightly shiny upholstery and according to the notes on the watercolour sketch drawing, the sofa cost 600 Danish Kroner to make. Photos from Gottlob's home taken in the last year of his life shows the present sofa with a striped wool fabric woven by Lis Ahlmann.

The sofa is one of the early pieces made in collaboration with cabinetmaker A.J. Iversen, a prolific partnership that for decades to follow would produce iconic pieces, their critical acclaim taking off when Iversen showcased Gottlob's designs at the 1925 Exposition Internationale des Arts Décoratifs et Industriels Modernes in Paris, for which Iversen won the price of honor. The careful execution and rich detailing characteristic of their collaborations is evident in the curvy, sculptural back and the subtle Neoclassical references of the carved swirls on the armrests.

DKK 30,000–40,000 / € 4,000–5,350



758
JUST ANDERSEN

b. Godhavn, Greenland 1884, d. Glostrup 1943

A pair of patinated bronze table lamps with orb shaped base. Stamped monogram Just A., Denmark. Design no. B148. Light fabric shades. H. excluding socket 35 cm. H. incl. shade holder approx. 56 cm. (2) *DKK 30,000–40,000 / € 4,000–5,350*



758

759
HERMANN LINDOW

b. Sønderborg 1909

Curved Cuban mahogany desk. Front with five drawers and storage compartments. Made 1930s by cabinetmaker Hermann Lindow. H. 73.5/92.5 cm. L. 135 cm. D. 80 cm.

Provenance: The present desk was made as a wedding present by Hermann Lindow for his wife.

DKK 20,000–25,000 / € 2,700–3,350



759

760
ERNST KÜHN

b. Copenhagen 1890, d. Gentofte 1948

Dressing table chair with stained beech frame. Seat and back upholstered with patinated leather, fitted with buttons. Seat fitted with brass nails. Made 1940s by Lysberg, Hansen & Therp. H. 65 cm. *DKK 20,000 / € 2,700*



760

761 ^{ARR} ©

FRITS SCHLEGEL

b. Frederiksberg 1896, d. Ordrup 1965

Brazilian rosewood living room suite comprising freestanding three seater sofa, a pair of easy chairs and a coffee table. Seat, sides and back upholstered with patinated Niger leather. Circular coffee table with underlying, perforated shelf, brass legs with rosewood "shoes". Made 1940s by cabinetmaker Peter Petersen. Sofa: L. 200 cm. Table: H. 50 cm. Diam. 115 cm. (4) *Rare suite, only three sets made.*

Provenance: Frits Schlegel. In 1968 passed on to his friend through many years Erik Elliott Nyegaard from Frits' wife Fritse Eline Jessen Graae. Table marked with transport label.

DKK 200,000 / € 27,000





762

762
FRITS SCHLEGEL

b. Frederiksberg 1896, d. Ordrup 1965

Elm dressing table and stool. Table with flip up mirror, storage compartment and drawers. Stool with lambskin seat cushion. Patinated brass handles, fittings and stool frame. Made approx. 1950s. H. 73 cm. L. 120 cm. W. 50 cm. (2)

Provenance: Made for Frits Schlegels second wife Fritse Eline Jessen Graae, later passed on to the Nyegaard family.

DKK 35,000–40,000 / € 4,700–5,350

763
FRITS SCHLEGEL

b. Frederiksberg 1896, d. Ordrup 1965

Elm bureau. Front with flip down writing leaf and tambour doors with brass handles. Interior with shelves and drawers. Made 1930s by cabinetmaker Peter Petersen. H. 70/100 cm. W. 110 cm. D. 40/68 cm.

Provenance: Acquired directly from Frits Schlegel by his friend through many years Erik Elliott Nyegaard.

DKK 15,000–20,000 / € 2,000–2,700



763

764

MOGENS KOCH

b. Frederiksberg 1898, d. Copenhagen 1992

Mahogany wingback chair with matching footstool. Sides, back and loose cushions upholstered with natural leather. Designed 1936. Made approx. 1970-1980s by upholsterer Ivan Schlechter, stamped. (2)

Model presented at The Copenhagen Cabinetmakers' Guild Exhibition at Designmuseum Danmark, 1936.

Literature: Grete Jalk [ed.]: "40 Years of Danish Furniture Design", vol. 1, referred to and ill. pp. 252-253.

DKK 60,000-80,000 / € 8,050-10,500



764



765

765

KAARE KLINT

b. Frederiksberg 1888, d. Copenhagen 1954

Freestanding three seater sofa with eight-legged, profiled mahogany cross-frame. Sides, seat and back upholstered with light brown leather. Model 4118. Designed 1930. Made approx. 1980s by Rud. Rasmussen Cabinetmakers. L. 199 cm.

Literature: Gorm Harkær, Klintiana: "Kaare Klint", vol. 2, ill. p. 92.

DKK 40,000 / € 5,350



766

766
KAARE KLINT

b. Frederiksberg 1888, d. Copenhagen 1954

A pair of bergeres with mahogany frame, rosewood inlays and "shoes". Seat, sides and back with woven cane. Loose cushions in seat and back upholstered with light natural leather. Model 4488. Designed 1931. Made 1980s by Rud. Rasmussen Cabinetmakers, with maker's paper label. (2)

KK label no. 45602.

Literature: Grete Jalk [ed.]: "40 Years of Danish Furniture Design", vol. 4, p. 214.

DKK 30,000 / € 4,000

767
KAARE KLINT

b. Frederiksberg 1888, d. Copenhagen 1954

"Games table for a lady". Mahogany set consisting of a table and matching set of four chairs. Square table with triangular fold-out leaves. Chairs with diagonal frame, back with stretchers. Seat with woven cane. Made 1940-1950s by Rud. Rasmussen Cabinetmakers, with maker's paper label. H. 67. cm. W./L. 61/87 cm. (5)

KK label no. 20549.

Presented at the Copenhagen Cabinetmakers' Guild Exhibition in 1946.

A contemporary critic then described it in this way: "...Professor Kaare Klint's Interior with Card Tables for A Lady, Perfect in terms of craftsmanship, notice the tabletop which consists of three layers of solid wood that have been glued together with the grains running at right angles to each other..."

Literature: Grete Jalk [ed.]: "40 years of Danish furniture design": the Copenhagen Cabinetmakers Guild exhibitions 1927-1966, vol. 2, ill. and described p. 312-313.

DKK 150,000 / € 20,000



767

768

KAARE KLINT

b. Frederiksberg 1888, d. Copenhagen 1954

“The Red Chair”. Set of 10 armchairs with profiled mahogany frame. Seat and back upholstered with red coloured leather. Model 3758A. Designed 1930. Made approx. 1950s by Rud. Rasmussen Cabinetmakers, with maker's paper label. (10)

KK label indistinctly numbered, 2780XX?

Literature: Gorm Harkær, Klintiana: “Kaare Klint”, vol. 2, ill. and mentioned p. 79–80.

DKK 60,000–80,000 / € 8,050–10,500



768



769

769

EDVARD KINDT-LARSEN

b. Frederiksberg 1901, d. Gentofte 1982

KAARE KLINT

b. Frederiksberg 1888, d. Copenhagen 1954

“Mix”. A pair of mahogany easy chairs. Sides, back and loose cushions upholstered with red leather. Model 4396. Designed 1937. Made approx. 1980s by Rud. Rasmussen Cabinetmakers. (2)

Literature: Gorm Harkær, Klintiana: “Kaare Klint”, ill. and mentioned in vol. 1, pp. 361–363 and vol. 2, p. 86.

DKK 60,000–80,000 / € 8,050–10,500



770
FRITS HENNINGSEN

b. 1889, d. 1965

A pair of mahogany easy chairs. Sides, seat and back upholstered with light linnen fabric with leather edgings. Made 1950s by cabinetmaker Frits Henningsen. (2) *DKK 25,000 / € 3,350*



770

771
FRITS HENNINGSEN

b. 1889, d. 1965

Wingback easy chair with profiled mahogany legs. Seat, sides and back upholstered with brown leather, back fitted with buttons. Made 1950s by cabinetmaker Frits Henningsen. *DKK 35,000-40,000 / € 4,700-5,350*



771

772 ©
LYSBERG, HANSEN & THERP

A pair of Brazilian rosewood side tables with underlying shelf. Top with black formica. Front with drawer. Brass handles and "shoes". Made 1940-1945 by Lysberg, Hansen & Therp. H. 58 cm. W. 51 cm. D. 38 cm. (2) *DKK 20,000-25,000 / € 2,700-3,350*



772

773

DANISH FURNITURE DESIGN

A pair of easy chairs with beech legs. Upholstered with grey/brown lambskin. Manufactured approx. 1950s, Denmark. (2)

DKK 35,000–40,000 / € 4,700–5,350

774

JACOB KJÆR, ATTRIBUTED

b. 1896, d. 1957

Freestanding two seater sofa with stained beech legs, front legs with brass castors. Sides, seat and back upholstered with light greyish bouclé fabric, back fitted with buttons. Made 1940s, presumably by cabinetmaker Jacob Kjær. L. 149 cm.

DKK 25,000–30,000 / € 3,350–4,000



775
VIGGO BOESEN, ATTRIBUTED

b. Copenhagen 1907, d. 1985

Easy chair with stained oak frame. Seat and back upholstered with lambskin, back fitted with buttons. Model 107. Manufactured 1940s by Slagelse Møbelværk.

Literature: Slagelse Møbelværk catalogue 4401, p. 27.

DKK 60,000–80,000 / € 8,050–10,500



775

776
HANS J. WEGNER

b. Tønder 1914, d. Gentofte 2007

“Valet Chair”. Sculptural, solid oak chair. Seat with storage space underneath. Model JH 540. Designed 1953. Made approx. mid 1970s by cabinetmaker Johannes Hansen, not stamped.

Model presented at the Cabinetmaker's Guild Exhibition at Designmuseum Danmark, 1953.

Literature: Grete Jalk [ed]: “40 Years of Danish Furniture Design”, vol. 3, pp. 244–247.

DKK 60,000–70,000 / € 8,050–9,400



776



777

777

PEDER MOOS

b. Nybøl 1906, d. Bredebro, Tønder 1991

Solid elm bench with cross-frame and lamellae seat. Made 1945 by cabinetmaker Peder Moos. H. 43 cm. L. 100 cm. W. 37 cm.

Provenance: Østrupgård manor, Faaborg.

DKK 20,000 / € 2,700



778



778 ©

PEDER MOOS

b. Nybøl 1906, d. Bredebro, Tønder 1991

Small Brazilian rosewood matchbox, corners with inlays of light wood. Designed and made late 1950s - early 1960s by cabinetmaker Peder Moos. H. 1.5 cm. L. 4.5 cm. W. 3 cm.

Provenance: Employee of Peder Moos. Hence by descent in the family.

DKK 20,000-25,000 / € 2,700-3,350



779^{ARR}

POUL HENNINGSEN

b. Ordrup 1894, d. Hillerød 1967

Grand piano. Black lacquered wood and brass.
7-1/4 octaves. Bone and ebony keys. Serial no.
6078. Made approx. 1940 by Andreas Christensen.
H. (open/closed) 92/162 cm.

DKK 150,000-200,000 / € 20,000-27,000



779



780

780
ATTILA SUTA

b. Hungary 1976

A pair of black lacquered bedside tables with nutwood frame. Front with each two "fluted" drawers with brass handles and inlays. Made 2022 by Attila Suta, Sweden, stamped by maker. H. 70 cm. W. 47 cm. D. 41 cm. (2)

DKK 20,000 / € 2,700



781
ATTILA SUTA

b. Hungary 1976

A pair of black lacquered chests of drawers with nutwood frame. Front with each three "fluted" drawers with brass handles and inlays. Made 2022 by Attila Suta, Sweden, stamped by maker. H. 80 cm. W. 91 cm. D. 41 cm. (2)

DKK 40,000 / € 5,350



781



782

782
TORSTEN THORUP,
CLAUS BONDERUP

b. 1944, b. Aalborg 1943, d. 2022

Set of four wengé and mahogany cubes. Seat upholstered with patinated Niger leather. Manufactured late 1960-1970s for Georg Jensen. H./L./W. 40 cm. (4)

Provenance: Georg Jensen showroom. DKK 15,000 / € 2,000



784

783 ©
ARNE HOVMAND-OLSEN

b. 1919, d. 1989

Brazilian rosewood sideboard with runner frame. Front with three drawers and four doors. Made 1960-1970s by Mogens Kold. H. 70.5 cm. L. 240 cm. D. 45 cm. DKK 30,000-40,000 / € 4,000-5,350

784
HENRY KJÆRNULF

b. Ubberud 1911, d. 1975

Set of six rosewood armchairs. Seat upholstered with black leather. Model 225. Manufactured approx. 1960s by Bruno Hansens Møbelfabrik. (6) DKK 20,000-25,000 / € 2,700-3,350



783

785 ©
NIELS O. MØLLER

b. 1920, d. 1982

A set of six Brazilian rosewood armchairs. Seat upholstered with black leather. Model 62. Designed 1962. Manufactured approx. 1960–1970s by J.L. Møller. (6)
DKK 80,000–100,000 / € 10,500–13,500



785



786

786 ©
JØRGEN DITZEL

b. Frederiksberg 1921, d. København 1961

NANNA DITZEL

b. Copenhagen 1923, d. s.p. 2005

Freestanding Brazilian rosewood desk, front with four drawers in rail. Model 93–4. Designed 1955. Manufactured 1960–1970s by Søren Willadsen, Vejen. H. 71.5 cm. L. 175 cm. W. 75 cm.

Literature: Bygge & Bo, June 1956.

DKK 30,000–40,000 / € 4,000–5,350



787

HANS J. WEGNER

b. Tønder 1914, d. Gentofte 2007

“Queen Chair”. Easy chair with tubular steel frame. Seat, armrests and back upholstered with black wool. Model AP 47. Designed 1960. Manufactured approx. 1960s by AP Stolen.

DKK 25,000–30,000 / € 3,350–4,000



787



788

788

HANS J. WEGNER

b. Tønder 1914, d. Gentofte 2007

“JH 701”. Set of four chairs with steel frame, mahogany back with dark wood inlay. Seat upholstered with black Savak wool. Designed 1965. Made approx. 1970s by cabinetmaker Johannes Hansen, one with maker's metal tag. (4)

Model presented at The Copenhagen Cabinetmakers' Guild Exhibition at Designmuseum Danmark, 1965.

Literature: Grete Jalk [ed.]: “40 Years of Danish Furniture Design”, vol. 4, pp. 300–303.

DKK 30,000–40,000 / € 4,000–5,350

789

HANS J. WEGNER

b. Tønder 1914, d. Gentofte 2007

“GE 1”. Solid oak daybed in two sections, adjustable back with metal brackets. Loose cushions upholstered with light, flecked wool. Designed 1954. Manufactured approx. 1960s by Getama, stamped by maker. H. 37 cm. L. 123/183 cm. W. 77 cm. (2)

Literature: “Dansk Kunsthåndværk” no. 5–6, 1955, pp. 90–91.

DKK 30,000–40,000 / € 4,000–5,350



789

790

HANS J. WEGNER

b. Tønder 1914, d. Gentofte 2007

“Valet Chair”. Sculptural, solid pine chair. Solid teak seat with storage space underneath. Model JH 540. Designed 1953. Made approx. 1970s by cabinetmaker Johannes Hansen, stamped.

Model presented at the Cabinetmaker's Guild Exhibition at Designmuseum Danmark, 1953.

Literature: Grete Jalk [ed]: “40 Years of Danish Furniture Design”, vol. 3, pp. 244–247. DKK 70,000–80,000 / € 9,400–10,500



790



791

791

HANS J. WEGNER

b. Tønder 1914, d. Gentofte 2007

“Papa Bear”. A pair of teak wingback easy chairs with a pair of matching stools. Sides, seat and back upholstered with light wool, back fitted with buttons. Model AP 19 and AP 29. Designed 1951 and 1954. Manufactured approx. 1960s by AP Stolen. (4)

Model presented at the exhibition “Tidens Møbler” in Forum 1952. DKK 150,000–200,000 / € 20,000–27,000



791



792

792

HANS J. WEGNER

b. Tønder 1914, d. Gentofte 2007

“The Chair”. A set of 10 solid oak armchairs. Seat upholstered with black leather. Model PP 503. Designed 1949. Made 2018 by PP Møbler, stamped. (10)

Model presented at The Copenhagen Cabinetmakers' Guild Exhibition at Designmuseum Danmark, 1949.

Literature: Grete Jalk [ed.]: “40 Years of Danish Furniture Design”, Vol. 3, pp. 98–101 and p. 140–142. DKK 200,000 / € 27,000

793

ALVAR AALTO

b. Kuortane 1898, d. Helsinki 1976

A pair of birch highback easy chairs. Upholstered with original rusty red wool. Model 36/401. Designed 1933. Manufactured 1950-1960s by Artek. (2) DKK 20,000 / € 2,700

794

BARBRO NILSSON

b. Malmö 1899, d. Höganäs 1983

"Finspong (Kringelikroka)". Handwoven wool carpet in "gobeläng" flatweave technique. Pattern in shades of red, pink and white. Signed BN and AB MMF. Designed 1954. Made after 1954 by AB Märta Måås-Fjetterström, Sweden. L. 359 cm. W. 254 cm.

Literature: Tyra Lundgren: "Märta Måås-Fjetterström och väv-verkstaden i Båstad", Stockholm 1968, mentioned p. 115.

Literature: Viggo Steen Møller: "En bok om Barbro Nilsson", Höganäs 1977, mentioned pp. 38 og 95. DKK 150,000-175,000 / € 20,000-23,500



793



794



795
CARL-GUSTAV HIORT AF ORNÄS

b. 1911
 "Studio". Freestanding three seater oak sofa. Loose cushions upholstered with black leather. Back with woven leather girths. Designed approx. 1957. Made approx. 1960s by Puunveisto Oy, Helsingfors for Gösta Westberg Möbel AB, Stockholm. L. 180 cm.

Literature: Andreas Siesing: "Svenska Möbler", ill. p. 116.
 DKK 20,000 / € 2,700



795

796
TAPIO WIRKKALA

b. 1915, d. 1985
 Rectangular Sipo mahogany coffee table, top with leaf inlay of elm wood. "Drumstick" legs of partly nickel plated brass and metal. Manufactured approx. 1960s by Asko Oy, Finland, stamped by maker. H. 40 cm. L. 120 cm. W. 60 cm.

DKK 20,000–25,000 / € 2,700–3,350



796

797
AGDA ÖSTERBERG

b. Stockholm 1891, d. Varnhem 1987
MONICA BERTILSSON
 b. 20th cent.
 Handwoven wool carpet in "rölakan" flat weave technique. Geometric pattern in yellow, blue and brown nuances. Signed AÖ and MB. Made approx. 1950–60s by Tre Bäckar, Varnhem, Sweden. L. 270 cm. W. 71 cm.
The carpet is presumably designed by Monica Bertilsson, and approved by Agda Österberg. DKK 25,000 / € 3,350



797



798

**798
JO HAMMERBORG**

b. 1920, d. 1982

“Monolit”. A pair of brass floor lamps. Leather covered stem. White fabric shades. Manufactured approx. 1960s by Fog & Mørup. H. 160 cm. (2)

DKK 25,000 / € 3,350



800

**800
CARL MALMSTEN**

b. 1888, d. 1972

“Gamla Berlin” (Old Berlin). A pair of dark stained wood lounge chairs. Upholstered with sheepskin. Made approx. 1950s, Sweden. (2)

DKK 30,000–40,000 / € 4,000–5,350



799

**799
DANISH CABINETMAKER**

Box sofa in two sections with dark stained legs. Sides, seat and back upholstered with light lambskin, sides and back fitted with buttons. Made approx. 1950s, Denmark. H. 90 cm. L. each 190 cm. D. 95 cm. (2)

DKK 50,000–60,000 / € 6,700–8,050



801

801
NIELS VODDER

b. 1892, d. 1982

Freestanding teak display cabinet mounted on round tapering legs. Front with two sliding glass doors, behind which four adjustable shelves. Made 1960s by cabinetmaker Niels Vodder, not stamped. H. 115 cm. L. 140/150 cm. W. 50 cm.

DKK 30,000–40,000 / € 4,000–5,350

802
FINN JUHL

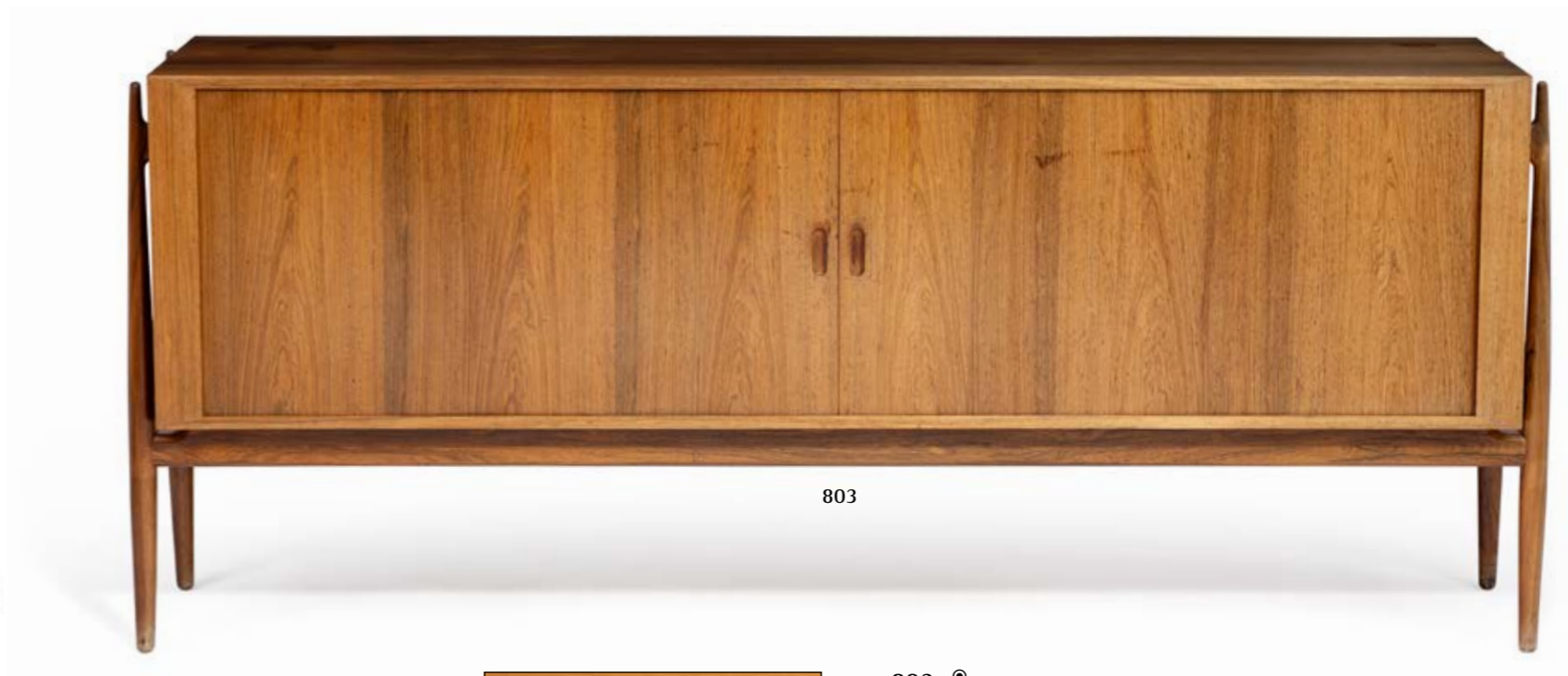
b. Frederiksberg 1912, d. Ordrup 1989

“FJ 53”. A nutwood easy chair with “floating” armrests on brass fittings. Sides, seat and back upholstered with grey-rose flecked wool. Designed 1953. Made 1950s by cabinetmaker Niels Vodder, stamped. Model presented at *The Copenhagen Cabinetmakers' Guild Exhibition at Designmuseum Danmark, 1953.*

Literature: Grete Jalk [ed.]: "40 Years of Danish Furniture Design", vol. 3, pp. 270–271. DKK 40,000–50,000 / € 5,350–6,700



802



803

803 ©
NIELS VODDER

b. 1892, d. 1982

“NV 54”. Freestanding Brazilian rosewood sideboard mounted on round tapering legs. Front with two tambour doors behind which rosewood interior with shelf and trays. Designed 1954. Made 197 by cabinetmaker Niels Vodder, stamped. H. 87 cm. L. 200/207.5 cm. W. 50 cm.

Literature: Niels Vodder catalogue, May 1956.

DKK 50,000–60,000 / € 6,700–8,050



804

FINN JUHL

b. Frederiksberg 1912, d. Ordrup 1989

"FJ 50". Teak desk with "floating" top with profiled edges. Cross and diagonal stretchers. Made 1960s by cabinetmaker Niels Vodder. H. 72 cm. L. 200 cm. W. 96 cm.

Variant of model presented at *The Copenhagen Cabinetmakers' Guild Exhibition at Designmuseum Danmark, 1952.*

Literature: Grete Jalk [ed.]: "40 Years of Danish Furniture Design", vol. 3, p. 232–233.

DKK 60,000–75,000 / € 8,050–10,000



805

FINN JUHL

b. Frederiksberg 1912, d. Ordrup 1989

"BO 72". A nutwood armchair. Seat and back upholstered with Niger leather. Made approx. 1960s by Bovirke.

Literature: "Finn Juhl Memorial Exhibition", Japan 1990, ill. p. 137. Literature: *The Magazine "Dansk Kunsthåndværk"* nr. 12, 1951.

DKK 25,000–30,000 / € 3,350–4,000

806

FINN JUHL

b. Frederiksberg 1912, d. Ordrup 1989

"BO 72". A nutwood armchair. Seat and back upholstered with Niger leather. Made approx. 1960s by Bovirke.

Literature: "Finn Juhl Memorial Exhibition", Japan 1990, ill. p. 137. Literature: *The Magazine "Dansk Kunsthåndværk"* nr. 12, 1951.

DKK 25,000–30,000 / € 3,350–4,000





807

807

FINN JUHL

b. Frederiksberg 1912, d. Ordrup 1989

“FJ 53”. Freestanding two seater nutwood sofa and matching easy chair, “floating” armrests with brass fittings. Sides and back upholstered with grey wool, seat with black wool. Designed 1953. Made 1950–1960s by cabinetmaker Niels Vodder, not stamped. Sofa: L. 129 cm. (2)

Models presented at The Copenhagen Cabinetmakers' Guild Exhibition at Designmuseum Danmark, 1953.

Literature: Grete Jalk [ed.]: “40 Years of Danish Furniture Design”, vol. 3, ill. pp. 270–271. DKK 125,000–150,000 / € 17,000–20,000

808

EJVIND A. JOHANSSON

b. 1923, d. 2002

Rare teak coffee table. Circular, reversible top, one side with black formica. Made 1955–1960s by cabinetmaker Ludvig Pontoppidan. H. 47 cm. Diam. 100 cm.

Similar model with three-legged frame presented at The Copenhagen Cabinetmakers' Guild Exhibition at Designmuseum Danmark, 1955.

Literature: Grete Jalk [ed.]: "40 Years of Danish Furniture Design", vol. 3, pp. 346–347.

DKK 25,000–30,000 / € 3,350–4,000



808

809

HELGE VESTERGAARD JENSEN

b. Herning 1917, d. Copenhagen 1987

"Racket Chair". A pair of walnut easy chairs. Seat and back strung with nylon strings. Loose seat cushion upholstered with red leather. Headrest upholstered with light chamois, mounted with nylon string and brass counterweight orb. Designed 1955. Made approx. 1990s by cabinetmaker Søren Horn's successor Niels Roth Andersen, stamped by maker. (2)

Model presented at The Copenhagen Cabinetmakers' Guild Exhibition at Designmuseum Danmark, 1955.

Literature: Grete Jalk [ed.]: "40 Years of Danish Furniture Design", vol. 3, pp. 342–345. DKK 80,000 / € 10,500



809



810



810
PETER HVIDT

b. Copenhagen 1916, d. s.p. 1986

ORLA MØLGAARD-NIELSEN

b. Ålborg 1907, d. Hellerup 1993

"AX". A pair of two seater benches of moulded beech with teak inlays. Seat and back upholstered with patinated natural leather. Designed 1947. Manufactured 1950–1960s by Fritz Hansen. L. each 112 cm. (4) DKK 20,000–25,000 / € 2,700–3,350

811
PETER HVIDT

b. Copenhagen 1916, d. s.p. 1986

Two white painted cabinets with teak drawers, doors and frame, brass handles and fittings. Cabinet with two doors in front, interior with adjustable shelf. Other with three drawers and two archive drawers in front. Made approx. mid 1940s by cabinetmaker Ludvig Pontoppidan. H. 62 cm. H. incl. frame 91 cm. W. 77/82.5 cm. D. 54 cm. (2)

Provenance: Architect Peter Hvidt, hence by descent in the family.

Literature: Sigvard Bernadotte, Johannes Lehm-Laursen [ed.]: "Moderne dansk boligkunst, 1946", ill. pp. 179–180.

DKK 30,000–40,000 / € 4,000–5,350



811



812

**812
CARL MALMSTEN**

b. 1888, d. 1972

"Capella". Handwoven wool carpet in "rölakan" flatweave technique. Geometric pattern in green nuances. Signed CM. Made second half of 20th century. L. 203 cm. W. 165 cm.

DKK 15,000 / € 2,000

**813
KURT ØSTERVIG**

b. 1912, d. 1986

Sculptural solid oak daybed mounted with brass "shoes". Mattress upholstered with chequered green fabric. Designed and manufactured approx. 1950s, presumably by Jason. H. 44/55 cm. L. 184 cm. W. 75 cm.

Literature: *Mobilia*, no. 35-33, June-July 1958, variant of model ill. DKK 20,000-25,000 / € 2,700-3,350



813



814

**814
POUL HENNINGSEN**

b. Ordrup 1894, d. Hillerød 1967

"PH-4/3". Table lamp with patinated brass frame marked "Pat. Appl.". Green/white copper top shade, later multilayer opaline glass middle and bottom shade. Manufactured 1926-1928 by Louis Poulsen. H. 54 cm. DKK 60,000-80,000 / € 8,050-10,500



815

815

TH. VALENTINER

A pair of adjustable patinated brass floor lamps. Conical, green lacquered metal shade. Model THV-376. Manufactured 1960s for retailer Poul Dinesen. H. 135 cm. L. arm 62 cm. (2)

DKK 20,000–25,000 / € 2,700–3,350



816

816

BRUNO MATHSSON

b. Värnamo, Sverige 1907, d. s.p. 1988

"Pernilla 3". A pair of moulded, laminated beech chaise longues. Seat and back with pleated brown leather girths. Designed 1944. Manufactured resp. 1969 and 1983 by Karl Mathsson, stamped by maker. L. 170 cm. (2) *DKK 40,000–50,000 / € 5,350–6,700*



817

817
BØRGE MOGENSEN

b. Aalborg 1914, d. Gentofte 1972

Oak chest of drawers with runner frame. Front with five drawers with brass handles. Model BM 59. Designed 1957. Manufactured 1960s by P. Lauritsen & Søn. H. 90 cm. W. 70 cm. D. 50 cm.

DKK 20,000–25,000 / € 2,700–3,350



818

818
BØRGE MOGENSEN

b. Aalborg 1914, d. Gentofte 1972

“Øresund”. A pair of oak chests of drawers on runner legs with black metal stretchers. Front each with four drawers with round, carved handles. Designed 1959. Manufactured 1960–1970s by Karl Andersson & Söner, Sweden. H. 84 cm. W. 68.5 cm. D. 46 cm.

(2) DKK 20,000–25,000 / € 2,700–3,350



819

819
BØRGE MOGENSEN

b. Aalborg 1914, d. Gentofte 1972

“The Spanish Chair”. A pair of patinated oak armchairs. Seat and back with patinated natural grain leather. Model 2226. Designed 1958. Manufactured approx. 1970s by Fredericia Stolefabrik, with maker's paper label. (2)

Model presented at The Copenhagen Cabinetmakers' Guild Exhibition at Designmuseum Danmark, 1958.

Literature: Grete Jalk [ed.]: “40 Years of Danish Furniture Design”, vol. 4, pp. 66–69. Literature: Arne Karlsen, “Møbler tegnet af Børge Mogensen”, ill. pp. 84–85.

DKK 30,000–40,000 / € 4,000–5,350



820

820
PETER OLE SCHIØNNING

b. 1942

Solid pine work / dining table with travertine top.
Ends with drop leaves with wide pine lamellae.
Made approx. 1960-1970s by Eilersen. H. 68 cm.
L. 129/181/233 cm. W. 90 cm.

DKK 20,000-25,000 / € 2,700-3,350



821

821
BØRGE MOGENSEN

b. Aalborg 1914, d. Gentofte 1972

A set of six oak armchairs, seat and back with patinated natural grain leather. Model 3238. Manufactured approx. 1980s by Fredericia Stolefabrik, with maker's label. (6)

DKK 50,000-60,000 / € 6,700-8,050



822

822
BØRGE MOGENSEN

b. Aalborg 1914, d. Gentofte 1972

A teak chest of drawers with oak frame. Front with eight drawers, fitted with special brass handles. Model A 234. Manufactured 1960s by C.M. Madsen for FDB, stamped. H. 92.5 cm. W. 122.5 cm. D. 44.5 cm.

Literature: FDB catalogue 1964–1965, p. 38.

DKK 20,000 / € 2,700



823

823
HANS J. WEGNER

b. Tønder 1914, d. Gentofte 2007

“Sawbench Chair”. A pair of oak armchairs with teak armrests. Seat and back upholstered with patinated Niger leather. Model CH 28. Manufactured 1950–1960s by Carl Hansen & Søn, stamped by maker. (2)

Literature: “Dansk Kunsthåndværk”, no. 9, September 1952.

Literature: Per H. Hansen & Klaus Petersen, “Moderne dansk møbeldesign”, 2007, p. 167.

DKK 40,000–50,000 / € 5,350–6,700

824

BØRGE MOGENSEN

b. Aalborg 1914, d. Gentofte 1972

"Øresund". Three tall teak showcase cabinets, front with four glass doors. Interior with adjustable shelves. Brass fittings. Model BM 68. Designed 1958. Manufactured 1960s by P. Lauritsen & Søn. H. 204 cm. W. 109 cm. D. 38 cm. (3) DKK 50,000 / € 6,700

825

EJNER LARSEN

b. 1917, d. 1987

AKSEL BENDER MADSEN

b. 1916, d. 2000

Teak chair with sculptural frame. Seat and back upholstered with patinated black leather. Designed 1951. Made 1950s by cabinetmaker Willy Beck, with maker's metal tag.

Model presented at The Copenhagen Cabinetmakers' Guild Exhibition at Designmuseum Danmark, 1951.

Literature: Grete Jalk [ed.]: "40 Years of Danish Furniture Design", vol. 3, p. 168. DKK 30,000 / € 4,000



825



824

826

PREBEN FABRICIUS

b. 1931, d. 1984

JØRGEN KASTHOLM

b. Roskilde 1931, d. Düsseldorf 2007

"FK 84". Desk armchair with aluminum and steel swivel frame. "Floating" back, seat and armrests upholstered with cognac coloured Niger leather, fitted with buttons. Manufactured 1960-1970s by Kill International.

DKK 30,000 / € 4,000



826



827

827

POUL HENNINGSEN

b. Ordrup 1894, d. Hillerød 1967

"PH-2/1". "PH-Cup." Five armed chandelier with chromed frame. Conical zinc socket houses. Frosted glass shades. Designed 1935. Manufactured 1940-1950s by Louis Poulsen. H. 52 cm. Diam. 65 cm.

Literature: "Light Years Ahead", model ill. p. 195.

DKK 25,000 / € 3,350



828



829

828

ARNE NORELL

b. Kristinehamn 1917, d. Bredestad 1971

"Ari". A pair of easy chairs with steel frame. Seat and back upholstered with original, dark brown leather with grain leather straps. Designed 1960s. Manufactured 1960-1970s by Norell Möbler AB, with maker's label. (2)

Literature: Andreas Siesing "Svenska Möbler", p. 272.

DKK 30,000-40,000 / € 4,000-5,350

829

PREBEN FABRICIUS

b. 1931, d. 1984

JØRGEN KASTHOLM

b. Roskilde 1931, d. Düsseldorf 2007

"Grasshopper". Chromed steel chaise longue covered with sand coloured canvas. Loose cushions and headrest upholstered with patinated brown leather. Armrests with grain leather cord. Model FK 87. Designed 1965. Manufactured 1960s by Alfred Kill, Germany. *DKK 75,000 / € 10,000*



830

830
POUL KJÆRHOLM

b. Østervrå 1929, d. Hillerød 1980

“PK 1”. Set of 10 chairs with chromed tubular steel frame. Seat and back with patinated woven cane. Designed 1956. Manufactured 1960–1970s by E. Kold Christensen. (10)

DKK 40,000–50,000 / € 5,350–6,700



831

831
POUL KJÆRHOLM

b. Østervrå 1929, d. Hillerød 1980

“PK 22”. A pair of lounge chairs with chromed steel frame. Seat and back with woven cane. Designed 1956. Manufactured approx. 1970s by E. Kold Christensen, stamped. (2) *DKK 30,000 / € 4,000*

832

POUL KJÆRHOLM

b. Østervrå 1929, d. Hillerød 1980

“PK 91”. Folding stool with matte chromed steel frame. Seat with sand coloured canvas. Designed 1961. Manufactured 1970s by E. Kold Christensen, not stamped.

DKK 30,000–40,000 / € 4,000–5,350

833

POUL KJÆRHOLM

b. Østervrå 1929, d. Hillerød 1980

“PK 91”. Folding stool with matte chromed steel frame. Seat with sand coloured canvas. Designed 1961. Manufactured 1970s by E. Kold Christensen, stamped.

DKK 30,000–40,000 / € 4,000–5,350



832



833



834

POUL KJÆRHOLM

b. Østervrå 1929, d. Hillerød 1980

“PK 61”. Coffee table with chromed steel frame. Square Porsgrunn marble top. Designed 1956. Manufactured approx. 1970s by E. Kold Christensen, stamped. H. 32 cm. W./L. 80 cm.

DKK 80,000 / € 10,500



834



835

835 ©
NIELS O. MØLLER

b. 1920, d. 1982

A set of 12 Brazilian rosewood chairs. Seat upholstered with patinated Niger leather. Model 78. Designed 1962. Manufactured 1960–1970s by J.L. Møller. (12)

DKK 100,000–120,000 / € 13,500–16,000

836

JACOB KJÆR

b. 1896, d. 1957

"UN Chair". A pair of mahogany armchairs. Seat and back upholstered with black leather. Model B 37. Designed 1949. Made 1954 by cabinetmaker Jacob Kjær, one with maker's paper label. (2)

Literature: Noritsugu Oda, "Danish Chairs", 1999, ill. and mentioned p. 33.

Literature: Grete Jalk [ed.]: "40 Years of Danish Furniture Design", vol. 3, p. 109. DKK 40,000 / € 5,350



836

837

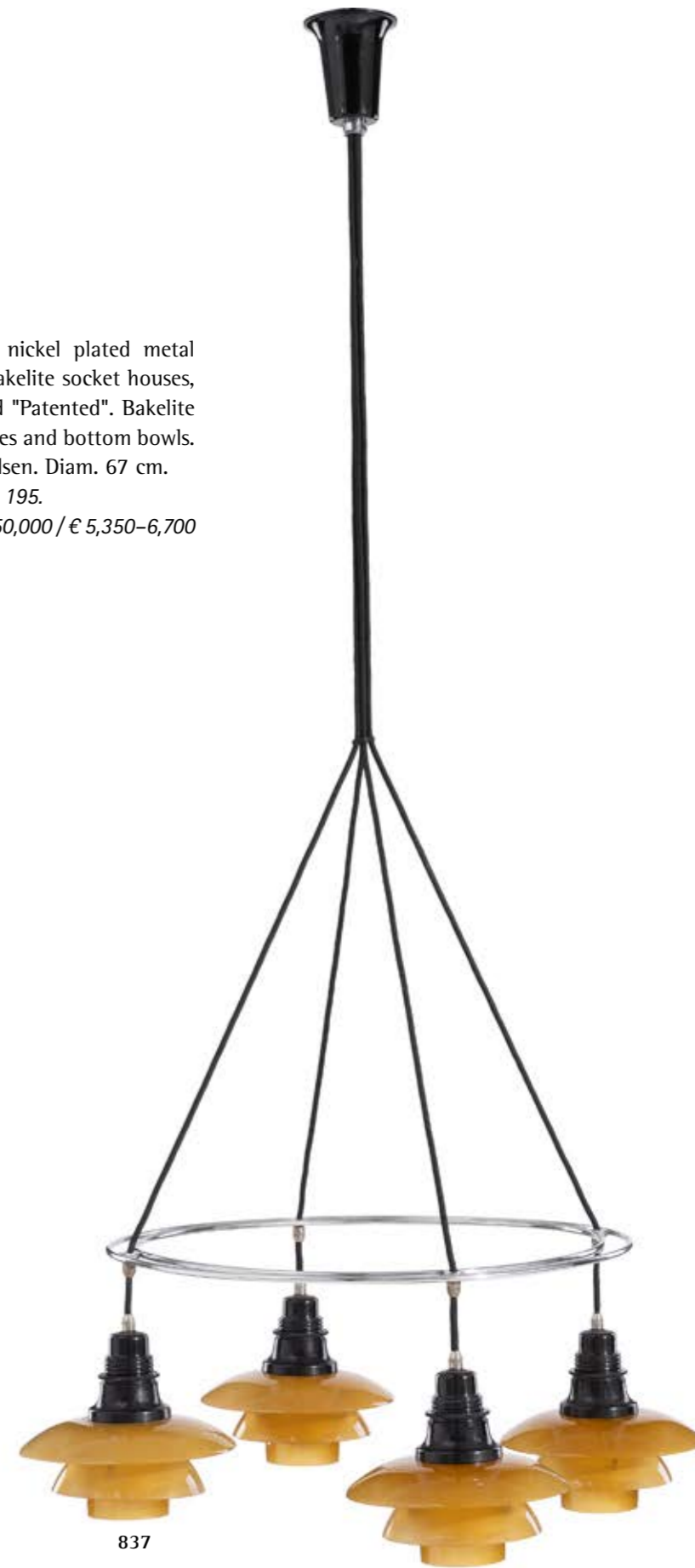
POUL HENNINGSEN

b. Ordrup 1894, d. Hillerød 1967

"PH-Twin ring". Chandelier with nickel plated metal frame, four branches with black bakelite socket houses, shade fittings marked "P.H.-2" and "Patented". Bakelite canopy. Amber coloured glass shades and bottom bowls. Manufactured 1930s by Louis Poulsen. Diam. 67 cm.

Literature: "Light Years Ahead", ill. p. 195.

DKK 40,000–50,000 / € 5,350–6,700



837



838

838
OLE WANSCHER

b. Frederiksberg 1903, d. Charlottenlund 1985

A pair of square mahogany side tables with profiled legs and carved "shoes". Made 1950–1960s by cabinetmaker A.J. Iversen, with maker's label. H. 52 cm. L./W. 48 cm. (2) *DKK 15,000–20,000 / € 2,000–2,700*

839
ARNE JACOBSEN

b. Copenhagen 1902, d. s.p. 1971

"Bellevue". Set of six stained, solid oak chairs. Seat with original brown leather. Manufactured late 1930s by Fritz Hansen. (6) *Designed 1935–1937 for the restaurant at the Bellevue Theatre, north of Copenhagen.*

Litteratur: Carsten Thau & Kjeld Vindum, "Arne Jacobsen", ill. p. 85.

Literature: Michael Sheridan: "Room 606 – The SAS House and the work of Arne Jacobsen", pp. 223–224.

DKK 50,000–60,000 / € 6,700–8,050



839



840

840 ©
OLE WANSCHER
b. Frederiksberg 1903, d. Charlottenlund 1985

Brazilian rosewood cabinet on slightly tapering, profiled legs. Slightly curved front with tambour doors and five drawers with brass handles. Interior with adjustable shelves. Made approx. 1960s for Illums Bolighus, with retailer's metal tag. H. 150 cm. W. 120 cm. D. 45 cm.
DKK 40,000 / € 5,350

841 ©
OLE WANSCHER
b. Frederiksberg 1903, d. Charlottenlund 1985

Set of 10 Brazilian rosewood dining chairs. Seat upholstered with patinated black leather. Designed 1962. Made 1960s by cabinetmaker A.J. Iversen. (10)
DKK 80,000-100,000 / € 10,500-13,500



841



842

842 ©
JACOB KJÆR, A.O.

b. 1896, d. 1957

Brazilian rosewood dining room suite consisting of a set of six chairs and a rectangular dining table. Seat and back upholstered with black leather. Model A-49. Designed 1956. Made approx. 1960s by cabinetmaker Jacob Kjær. Table: H. 72 cm. L. 180 cm. W. 90 cm. (7) Chair model presented at The Copenhagen Cabinetmakers' Guild Exhibition at Designmuseum Danmark, 1956.

Literature: Grete Jalk [ed.]: "40 Years of Danish Furniture Design", vol. 3, model with cane ill. p. 374-75.

Literature: Noritsugu Oda, "Danish Chairs", p. 35.

DKK 60,000-80,000 / € 8,050-10,500

843
JACOB KJÆR

b. 1896, d. 1957

"UN Chair". A pair of walnut armchairs. Seat and back upholstered with black leather. Model B 37. Designed 1949. Made 1960s by Christensen & Larsen Cabinet-makers, stamped. (2)

Literature: Noritsugu Oda, "Danish Chairs", 1999, ill. and mentioned p. 33.

Literature: Grete Jalk [ed.]: "40 Years of Danish Furniture Design", vol. 3, p. 109.

DKK 30,000-40,000 / € 4,000-5,350



843

844

MOGENS KOCH

b. Frederiksberg 1898, d. Copenhagen 1992

Solid mahogany chest for drawings. Front with eight drawers in two sizes with round, carved handles. Made 1990s by Rud. Rasmussen Cabinetmakers, with maker's paper label. H. 81 cm. W. 76 cm. D. 55 cm. *KK label no. 47931.*

DKK 25,000–30,000 / € 3,350–4,000



844

845

KAARE KLINT

b. Frederiksberg 1888, d. Copenhagen 1954

“The Red Chair”. A pair of Cuban mahogany chairs with profiled legs. Seat and back upholstered with patinated Niger leather, fitted with brass nails. Model 3758. Designed 1927. Made late 1920s - early 1930s by Rud. Rasmussens Fabrik for Egetræsmøbler, with maker's paper label. (2)

Literature: Gorm Harkær, Klintiana: “Kaare Klint”, vol. 2, ill. and mentioned pp. 82–84.

DKK 25,000–30,000 / € 3,350–4,000



845



846

KAARE KLINT

b. Frederiksberg 1888, d. Copenhagen 1954

“The Red Chair”. Set of eight Cuban mahogany chairs with profiled frame. Seat and back upholstered with patinated Niger leather, fitted with brass nails. Model 4751. Designed 1933. Made 1930s by Rud. Rasmussen Cabinetmakers, with maker's paper label. (8)

KK label no. 13834.

Literature: Gorm Harkær, Klintiana: "Kaare Klint", vol. 2, ill. and mentioned pp. 82–84.

DKK 150,000–200,000 / € 20,000–27,000

846

INDEX

A

Aalto, Alvar	728, 793
Andersen, Just	758
Andersen, Knud	697, 699, 700, 701, 702

B

Bender Madsen, Aksel	825
Bernadotte, Sigvard	651
	653, 654, 655
Bertilsson, Monica	797
Bille, Bent	718
Bloch, Kresten	697
Boesen, Viggo	775
Bonderup, Claus	782
Bryk, Rut	695

D

Dangel, Karl	753
Danish Cabinetmaker	730, 799
Danish Furniture Design	773
	755, 756
Dessau, Ingrid	725
Ditzel, Jørgen	714, 786
Ditzel, Nanna	714, 786

F

Fabricius, Preben	826, 829
Færch, Knud	747

G

Gottlob, Kaj	757
Griegst, Arje	696
Gundlach-Pedersen, Oscar	647

H

Halier, Carl	701, 702
Hammerborg, Jo	798
Hansen, Fritz	750, 752
Hein, Piet	727
Henningens, Frits	770, 771
Henningens, Poul	706, 738, 741 751, 754, 779 814, 827, 837
Hermansen, Anders	721
Hiort af Ornäs, Carl-Gustav	795
Hovmand-Olsen, Arne	783
Hvidt, Peter	743, 810, 811

J

Jacobsen, Arne	715, 716, 839
----------------	---------------

Jensen, Georg	634, 636, 637 638, 641, 642 648, 649, 650
Johansson, Ejvind A.	808
Juhl, Finn	744, 745, 748 749, 802, 804 805, 806, 807
Jørgensen, Erik Ole	717

K

Kastholm, Jørgen	826, 829
Kindt-Larsen, Edvard	735, 737, 769
Kjær, Jacob	774, 836, 842, 843
Kjærholm, Poul	719, 720 722, 723 724, 830, 831 832, 833, 834
Kjærnulf, Henry	784
Klint, Kaare	729, 732, 734 735, 737, 765 766, 767, 768 769, 845, 846
Koch, Mogens	731, 733, 764 844
Kühn, Ernst	760

L

Larsen, Ejner	825
Lassen, Mogens	736
Lauritzen, Vilhelm	739, 740
Lindow, Hermann	759
Lysberg, Hansen & Therp	772

M

Malmsten, Carl	800, 812
Manz, Bodil	693
Mathsson, Bruno	816
Mogensen, Børge	817, 818, 819 821, 822, 824
Moos, Peder	777, 778
Mølgaard-Nielsen, Orla	743, 810
Møller, Niels O.	785, 835

N

Nielsen, Harald	635, 640, 652, 657
Nilsson, Barbro	746, 794
Norell, Arne	828

R

Rohde, Johan	639, 643, 644 645, 646, 656
--------------	--------------------------------

S

Salto, Axel	658 659, 660, 661 662, 663, 664 665, 666, 667 668, 669, 670 671, 672, 673 674, 675, 676 677, 678, 679 680, 681, 682 683, 684, 685 686, 687, 688 689, 690, 691
Scandinavian Design	742
Schjøning, Peter Ole	820
Schlegel, Frits	761, 762, 763
Siesbye, Alev Ebüzziya	692, 694
Suenson, Palle	726
Suta, Attila	780, 781

T

Thorsson, Nils	699, 700
Thorup, Torsten	782
Tidemand, Nikolai	698

V

Valentiner, Th.	703, 815
Vestergaard Jensen, Helge	809
Vodder, Niels	801, 803

W

Wanscher, Ole	838, 840, 841
Wegner, Hans J.	704, 705 707, 708, 709 710, 711, 712 713, 776, 787 788, 789, 790 791, 792, 823
Wirkkala, Tapio	796

Ö

Österberg, Agda	797
-----------------	-----

Ø

Østervig, Kurt	813
----------------	-----



Disse købsvilkår udgør Bruun Rasmussen Kunstauktioner A/S' ("BRK") købsvilkår for Liveauktioner og er gældende fra 1. februar 2017.

BRK kan til enhver tid ændre købsvilkårene.

Ved bud accepterer budgiver/køber at være bundet af de til enhver tid gældende købsvilkår, som fremgår på bruun-rasmussen.dk. Købsvilkårene gælder både i forhold til erhvervsdrivende og forbrugere.

FØR AUKTIONEN

1 VURDERING AF GENSTANDE

1.1 Alle udbudte genstande er vurderet af BRK. Vurderingen er et skøn over det forventede hammerslag, jf. punkt 5.3. Vurderingen er baseret på tidligere salg af samme type genstande og erfaringer hos BRK. Hammerslag kan derfor falde højere eller lavere ud end vurderingen.

2 BESKRIVELSE AF GENSTANDE

2.1 Udbudte genstande præsenteres med fotos og beskrivelse i kataloger og på bruun-rasmussen.dk. Beskrivelsen foretages efter bedste overbevisning af BRK og ud fra en nøje undersøgelse efter den på salgstidspunktet herskende opfattelse blandt eksperter.

2.2 De udbudte genstande er af en alder og art, der bevirker, at de ofte er behæftede med slitage, mangler, beskadigelser og reparationer. Som udgangspunkt sælges alt som brugte genstande, og derfor indeholder beskrivelsen i kataloget og på bruun-rasmussen.dk ikke en redegørelse for ovenstående punkter eller genstandens stand.

2.3 I visse tilfælde vælger BRK at beskrive en genstands oprindelse. Det sker, hvis en tidligere ejer er offentlig kendt, og/eller hvis historien om et tidligere ejerskab belyser genstanden og dens art. Omvendt sker det også, at sådanne informationer udelades fra beskrivelsen, f.eks. for at imødekomme sælgers ønske om diskretion.

2.4 Vurderingen og beskrivelsen kan blive revideret forud for auktionen. Ændringer offentliggøres på bruun-rasmussen.dk

3 EFTERSYN

3.1 Udbudte genstande udstilles op til auktionen i et show-room hos BRK. Potentielle budgivere opfordres til at se genstanden efter i detaljer og har selv ansvaret for at forvise sig om dens stand på disse eftersyn, hvor der også er mulighed for at rådføre sig hos vurderingssagkyndige.

3.2 Hvis en potentiel køber ikke har mulighed for at besigtige genstanden ved selvsyn, kan der i de fleste tilfælde udfærdiges en konditionsrapport. Beskrivelsen heri er foretaget efter BRK's bedste overbevisning, men er ikke baseret på videnskabelige undersøgelser. En konditionsrapport tjener blot som identifikation og er ment som en hjælp til budgivere, der ikke selv har mulighed for at besigtige genstanden på eftersynet.

UNDER AUKTIONEN

4 BRK'S ROLLE

- 4.1 Salget af en genstand formidles af BRK på vegne af sælger. BRK afhænder altid udbudte genstande til den højst mulige pris under budgivningen.
- 4.2 Udbudte genstande kan have en med sælger aftalt mindstepris, hvorunder den ikke kan sælges. Denne pris er fortrolig.
- 4.3 Liveauktioner overværes af en af Justitsministeriets beskikket auktionsleder, der sikrer, at auktionerne går retmæssigt for sig.

5 BUDGIVNING

- 5.1 Auktionerne afvikles i danske kroner. De tilnærmelsesvis beløb i euro/US dollar vil blive oplyst på skærme i auktionssalen og i øvrigt på opfordring.
- 5.2 Auktionarius bestemmer overbuds størrelse og i hvilket tempo, auktionen afvikles. Overbud stiger normalt med 5 % - 10 % i forhold til det foregående bud. Normalt sælges der 50-100 katalognumre i timen.
- 5.3 Hammerslag betegner både det forhold, at auktionarius slår med hammeren og derved markerer budgivningens afslutning, og den pris (budsum), den udbudte genstand sælges til. Se punkt 7 vedrørende beløb, der tillægges hammerslaget.
- 5.4 Køber er den budgiver, der opnår hammerslag. Ved hammerslaget indgås på baggrund af disse købsvilkår en bindende købs-/salgsaftale.
- 5.5 Bydes på andres vegne, hæfter budgiver som selvskyldnerkautionist for handlen.
- 5.6 Genstande købes som beset, og køber har uanset budtype ingen fortrydelsesret, heller ikke efter forbrugeraftaleloven.
- 5.7 Budgiver skal efter anvisninger fra BRK identificere sig og dokumentere sin betalingsdygtighed, f.eks. ved registrering af gyldigt betalings-/kreditkort, bankgaranti eller indbetaling af depositum.
- 5.8 BRK kan nægte at acceptere et bud, hvis en tilstrækkelig sikkerhed for betaling mangler, eller hvis budgiver tidligere har misligholdt betalingsforpligtigelser ved køb hos BRK.
- 5.9 Auktionslederen træffer i samråd med auktionarius afgørelse i alle tvivlstilfælde omkring budgivningen.

6 BUDTYPER

- 6.1 Der er følgende muligheder for at afgive bud:
PERSONLIGT FREMMØDE:
 Registrering og udlevering af bydeskilt foregår ved indgangen til auktionssalen. Når budgiver ønsker at byde, signaleres dette til auktionarius ved at række bydeskiltet i vejret og tydeligt fremvise dets nummer.
KOMMISSIONSBUD:
 Det ønskede maksimale bud kan afgives via bruun-rasmussen.dk frem til auktionens start eller pr. e-mail, fax eller telefon, så budet er modtaget senest 24 timer forud for auktionens start. En kommissionær byder på budgivers vegne inden for rammerne af det ønskede maksimalbud og vil altid afgive lavest muligt overbud.
TELEFONBUD:
 I forhold til visse genstande er der mulighed for at blive ringet op af en medarbejder fra BRK, der vil byde på budgivers vegne under auktionen. Servicen kan bestilles via bruun-rasmussen.dk indtil tre timer for auktionens start.

LIVE BIDDING:

Det er muligt at følge auktionen live og byde med via bruun-rasmussen.dk

FORAUKTION:

Visse Liveauktioner indledes med en Onlineauktion. De højeste bud på Onlineauktionen danner udgangspunktet på den efterfølgende Liveauktion.

EFTER AUKTIONEN

7 BELØB, DER TILLÆGGES HAMMERSLAGET

- 7.1 I tillæg til hammerslaget, jf. punkt 5.3, skal køber for den enkelte genstand betale købersalær og, hvis betingelserne er opfyldt, de øvrige beløb, der er nærmere beskrevet nedenfor. Det samlede beløb, som køber skal betale til BRK, benævnes "købesummen".
 7.1.1 Købersalær: Hammerslaget tillægges et salær til BRK. På Liveauktioner udgør salæret 25,6 % af hammerslaget + moms af salæret, i alt 32 %. For frimærker og mønter udgørsalæret 20 % af hammerslaget + moms af salæret, i alt 25 %.
 7.1.2 "LIVE bidding": BRK's "LIVE bidding"-software via bruun-rasmussen.dk er gratis at benytte for budgivere.
 7.1.3 Fuldmoms: Visse genstande handles efter de gældende regler om fuldmoms. Her beregnes der moms på 25 % af både hammerslag og salær. Disse genstande er i beskrivelsen i kataloget og på bruun-rasmussen.dk mærket med symbolet "*" eller med teksten: "Dette emne handles i fuldmoms".
 7.1.4 Kunstnerafgift: Ifølge dansk lovgivning om ophavsret skal der opkræves kunstnerafgift (følgeretsvederlag) for værker af nyere danske og visse udenlandske kunstnere, som enten er nulevende eller ikke har været døde i mere end 70 år. Kunstnerafgiften opkræves på vegne af VISDA. Disse værker er i kataloget mærket med "ARR" (Artist's Resale Right) og på bruun-rasmussen.dk med teksten "Dette emne er belagt med kunstnerafgift". Kunstnerafgiften tillægges hele hammerslaget + salær (ekskl. moms), når beløbet overstiger 300 euro, som angivet nedenfor:

Hammerslag + salær (ekskl. moms)	Betalingsssats
300,01 - 50.000 euro	5%
50.000,01 - 200.000 euro	3%
200.000,01 - 350.000 euro	1%
350.000,01 - 500.000 euro	0.5%
over 500.000 euro	0.25%

Kunstnerafgiften kan ikke overstige 12.500 euro (ekskl. moms) for den enkelte genstand. Afgiften skal betales i danske kroner, og omregningskursen (EUR/DKK) fastsættes af VISDA.

- 7.1.5 Betalings-/kreditkortgebyr: BRK forbeholder sig ret til at opkræve de af indløsningselskaberne pålagte betalings-/kreditkortgebyrer. Satserne fremgår ved budgivning via bruun-rasmussen.dk og ved betaling.

8 BETALINGSFRIST

- 8.1 Købesummen forfalder til betaling ved hammerslaget, og køber har herefter otte dage til at betale købesummen til BRK.

9 BETALINGSMÅDER

- 9.1 Betaling kan ske på følgende måder:

A: Med betalings-/kreditkort (Dankort, Visa, MasterCard, Maestro, Diners Club, JCB og China UnionPay) eller kontant (op til 14.999 kr.) i auktionssalen eller efterfølgende i en afdeling hos BRK. Bemærk, at vi ikke modtager 500-eurosedler.

B: Med betalings-/kreditkort (Dankort, Visa, MasterCard, Maestro, Diners Club og JCB) på bruun-rasmussen.dk under købers personlige side.

C: Via bankoverførsel til BRK's konto i Danske Bank: 4183 4310970638 · Swift/BIC: DABADKDK · IBAN: DK4130004310970638.

10 MOMSFRTAGELSE, -BETALING OG -DEPONERING

- 10.1 Visse købere kan vælge hvilken momstype, der skal være gældende for handlen. Valget skal meddeles BRK senest to hverdage efter købet og kan ikke omgøres.

A: Momsregistrerede virksomheder i Danmark kan vælge, at handlen skal ske efter reglerne om fuldmoms, jf. punkt 7.1.3.

B: Momsregistrerede virksomheder i et andet EU-land kan fritages for dansk moms, når det kan dokumenteres, at genstanden er transporteret til den udenlandske adresse, som køber har oplyst over for BRK, og som er anført på fakturaen. I sådanne tilfælde skal der afregnes moms efter de gældende regler i det land, hvor køber er momsregistreret. Det tilrådes at søge oplysning hos de lokale myndigheder. Køber kan undlade at gøre brug af muligheden for momsfritagelse og i stedet betale dansk brugtmoms/fuldmoms.

C: Købere med bopæl uden for EU kan fritages for dansk moms, når det kan dokumenteres, at genstanden er transporteret ud af EU. BRK udsteder så vidt muligt og mod gebyr de fornødne eksportpapirer, som skal fremvises ved toldmyndighederne. Køber kan undlade at gøre brug af muligheden for momsfritagelse og i stedet betale dansk brugtmoms/fuldmoms.

- 10.2 Momsregistrerede virksomheder i et andet EU-land og købere med bopæl uden for EU skal deponere den danske moms af fakturabeløbet hos BRK, indtil eksporten er gennemført på dokumenteret lovligt vis. Foretages eksporten af en af BRK godkendt speditor, skal momsens ikke deponeres. Se listen over godkendte speditorer på bruun-rasmussen.dk

11 OVERSKRIDELSE AF BETALINGSFRIST

- 11.1 Overskrides en betalingsfrist, herunder fristen i punkt 8, opkræves morarenter, som beregnes efter Nationalbankens officielle udlånsrente + 8 % om året af det skyldige beløb.

11.2 Betales købesummen inkl. renter ikke senest ti dage efter, at der er fremsat påkrav herom, er BRK berettiget til at søge købesummen betalt ved modregning i depositum/ved træk på bankgaranti eller at hæve købet.

11.3 Hæves købet, er BRK berettiget til at sælge genstanden på en ny auktion og kræve omkostningerne og en eventuel difference mellem hammerslag (samt salær), der er opnået på de to auktioner, betalt af den misligholdende køber.

- 11.4 Alle forfaldne krav (inkl. omkostninger), som ikke betaales rettidigt, kan BRK i tillæg til inkasso søge inddrevet på følgende måder:

A: For købers regning sælge genstande indleveret til auktion af eller på vegne af køber. Salget kan gennemføres uden hensyntagen til en aftalt mindstepris. Genstande indleveret til auktion kan ikke kræves udleveret, så længe forfalden gæld henstår ubetalt.

B: Inddrage købers tilgodehavende hos BRK, herunder tilgodehavende fra salg af genstande indleveret af eller på vegne af køber, uanset om et sådant tilgodehavende stammer fra auktionssalg, som ligger forud for eller efter tidspunktet for købers misligholdelse.

12 AFHENTNING OG UDLEVERING

- 12.1 Ejendomsretten til en købt genstand overgår til køber, når hele købesummen inkl. eventuelle renter og gebyrer er betalt, og først herefter kan udlevering af genstanden finde sted.
- 12.2 Ved udlevering af en købt genstand forbeholder BRK sig retten til at kræve tilfredsstillende dokumentation for, at den person, som ønsker genstanden udleveret, enten selv er køberen eller er bemyndiget af køberen til at få genstanden udleveret.
- 12.3 Udlevering af visse våben kræver forevisning af gyldig våbentilladelse. Sådant krav er angivet med teksten "Køb af dette emne kræver forevisning af gyldig våbentilladelse" i kataloget og på bruun-rasmussen.dk
- 12.4 Købte genstande henligger fra hammerslaget for købers regning og risiko. Afhentning skal ske senest otte hverdage efter sidste auktionsdag.
- 12.5 Foretages afhentningen ikke rettidigt, transporteres de købte genstande til et lager for købers regning og risiko. Transporten koster 150 kr. inkl. moms pr. genstand, og opbevaringen koster 150 kr. inkl. moms pr. genstand pr. påbegyndt uge. Henligger en genstand uafhængt i så lang tid, at lagerlejen overstiger genstandens værdi, er BRK berettiget til for købers regning og risiko og uden hensyn til mindstepris at bortauktionere genstanden eller sælge den underhånden. Køber hæfter til transport og lagerleje, der ikke dækkes ved sådant salg.
- 12.6 I henhold til gældende hvidvasklovgivning skal køber i visse tilfælde udlevere identitetsoplysninger og fremvise billed-id til BRK, før køber kan få den købte genstand i sin besiddelse

13 FORSENDELSE

- 13.1 Er køber forhindret i selv at afhente en genstand, tilbyder BRK for købers regning og risiko at emballere og arrangere forsendelse enten med post eller speditør. Se punkt 12.2 angående legitimation.

14 EKSPORTTILLADELSE

- 14.1 For at sikre at dansk kulturarv af afgørende betydning forbliver i Danmark, kan Kulturværtdiudvalget for visse genstandes vedkommende nedlægge eksportforbud. Hvis køber ønsker at eksportere en genstand ud af Danmark, hvor der er nedlagt et eksportforbud, annulleres købet, og Kulturværtdiudvalget er forpligtet til at overtage genstanden til den pris, der blev opnået på auktionen. Køber kan ikke rejse krav mod BRK som følge af, at et eksportforbud bliver nedlagt.
- 14.2 Visse genstande er omfattet af Washingtonkonventionen, også kendt som CITES, der har til formål at stoppe ulovlig handel med genstande fremstillet af udryddelsestruede vilde dyr og planter. Såfremt en genstand er omfattet af Washingtonkonventionen, CITES, liste 1, vil det fremgå af beskrivelsen på bruun-rasmussen.dk og være markeret med symbolet "©" i kataloget. Følgende regler gør sig gældende:
 - A: Genstande omfattet af Washingtonkonventionen, CITES, liste 1, må kun handles, når der foreligger en dispensation i form af et såkaldt CITES-salgscertifikat. BRK indhenter det fornødne certifikat fra Naturstyrelsen, der tillader handel og eksport til lande inden for EU. Dog kan genstande, som er færdigforarbejdet før 1947, frit handles inden for EU uden et certifikat.
 - B: Det er alene genstande omfattet af Washingtonkonventionen, CITES, liste 1, som er særkilt markeret på bruun-rasmussen.dk og i kataloget. Genstande omfattet af Washingtonkonventionen, CITES, liste 2, der frit kan sælges og transporteres inden for EU, er ikke særkilt markeret.
 - C: Ved eksport til lande uden for EU skal der uanset årstallet for genstandens færdigforarbejdning altid indhentes en CITES-reeksporttilladelse fra Naturstyrelsen,

når genstanden er omfattet af Washingtonkonventionen, CITES, liste 1 og 2. Denne eksporttilladelse kan normalt indhentes problemfrit, når liste 1-genstande enten er solgt med et CITES-salgscertifikat eller er færdigforarbejdet før 1947. Liste 2-genstande opnår ligeledes normalt problemfrit en reeksporttilladelse. Eventuelle omkostninger, der opkræves af de danske myndigheder i forbindelse med udstedelse af en reeksporttilladelse, vil blive pålagt købers faktura.

D: I forbindelse med eksport til lande uden for EU kan særlige regler gøre sig gældende ifm. den efterfølgende import, og køber opfordres til at indhente oplysninger fra egne myndigheder.

15 MANGLER VED KØBTE GENSTANDE

- 15.1 Købelovens mangelsregler kan finde anvendelse. Nedenfor er angivet et ikke udtømmende uddrag af købers mangelsbeføjelser.
- 15.2 Køber er berettiget til at annullere et køb, hvis beskrivelsen har været behæftet med væsentlige fejl, der har ført til et højere hammerslag, end en korrekt beskrivelse ville have resulteret i. I sådanne tilfælde vil den samlede købesum blive refunderet. Køber kan ikke kræve betaling af renter af købesummen eller kræve dækning af anden udgift eller tab.
- 15.3 Et køb kan ikke annulleres, og køber kan ikke kræve købesummen refunderet eller rejse noget andet krav mod BRK, hvis beskrivelsen af genstanden er i overensstemmelse med punkt 2, eller hvis en påvisning af falskneri havde krævet brug af videnskabelige metoder, der enten ikke var tilgængelige på salgstidspunktet, havde været uforholdsmæssigt omkostningskrævende at anvende eller havde ført til beskadigelse af den pågældende genstand.
- 15.4 Krav om annullering af et køb skal meddeles BRK, når køber er blevet bekendt med det forhold, der berettiger køber til at annullere købet, dog senest to år fra den seneste afhentningsdato efter punkt 12.4. Den købte genstand skal returneres til BRK i samme stand som på hammerslagstidspunktet. Overholdes disse betingelser ikke, mister køber retten til at annullere købet og kan ikke kræve købesummen refunderet. Køber er selv ansvarlig for at betale de omkostninger, der er forbundet med returnering af genstanden.

16 INDSIGELSE- OG ANSVARSBEGRÆNSNING

- 16.1 BRK tager forbehold for fejl, tekniske vanskeligheder samt udefrakommende misbrug eller forstyrrende påvirkning under auktionen. Budgetgiver kan ikke rejse noget krav mod BRK som følge heraf.
- 16.2 Køber er i alle tilfælde selv ansvarlig for korrekt betaling af moms og andre afgifter, gebyrer mv. i overensstemmelse med danske og udenlandske regler.
- 16.3 Medmindre andet fremgår af disse købsvilkår, kan BRK aldrig blive ansvarlig for budgetgivers/købers driftstab, avancetab, andre indirekte tab eller følgeskader.

17 PERSONDATAPOLITIK

- 17.1 Det er vigtigt for BRK at sikre fortrolighed og sikkerhed omkring budgetgivers/købers personlige oplysninger. Persondatapolitikken fremgår af bruun-rasmussen.dk.

18 KLAGE, TVISTLØSNING OG LOVVALG

- 18.1 Har budgetgiver/køber en klage, kan der altid rettes henvendelse til BRK.
- 18.2 Lykkes det ikke at finde en løsning, kan forbrugere sende en klage til Nævnenes Hus, Toldboden 2, 8800 Viborg, e-mail: naevneneshus.dk. Forbrugere med bopæl i et andet EU-land end Danmark kan klage til EU-Kommissionens online klageportal via hjemmesiden: <http://ec.europa.eu/odr>.
- 18.3 Tvister skal indbringes i Danmark ved Københavns Byret, jf. dog punkt 18.2. I forbrugerforhold gælder de ufravigelige værnetingsregler.

Bruun Rasmussen Kunstauktioner

Rev. 03.24

CONDITIONS OF PURCHASE – LIVE AUCTIONS

These conditions of purchase represent Bruun Rasmussen Kunstauktioner A/S' ("BRK") conditions of purchase for Live Auctions and are effective from 1 January 2017. BRK may modify the conditions of purchase at any time.

By bidding, the bidder/buyer accepts the current conditions of purchase as they appear on bruun-rasmussen.dk. The conditions of purchase are applicable to both business owners and consumers.

BEFORE THE AUCTION

1 VALUATION OF ITEMS

- 1.1 All the offered items are valued by BRK. The valuation is an estimate based on the expected hammer price, see paragraph 5.3. The estimate is based on the previous sale of similar items as well as BRK's past experience. The hammer price can therefore be higher or lower than the estimated price.

2 DESCRIPTION OF ITEMS

- 2.1 Items up for auction are presented with photographs and descriptions in catalogues and on bruun-rasmussen.dk. The description is worded according to the best of BRK's knowledge and based on detailed research in accordance with the prevailing views among experts at the time of sale.
- 2.2 The items up for auction are of an age and nature that often mean that they are in a worn, repaired or damaged condition. As a starting point everything is sold as used items. For this reason, the descriptions in the catalogue or at bruun-rasmussen.dk do not include a statement regarding the above or the condition of the item.
- 2.3 In some cases, BRK may choose to describe an item's provenance. Such a description is made if a former owner is publicly known and/or if the story of previous ownership sheds further light on the item and its background. In other cases, such information is left out of the description, for instance to meet the seller's wish for privacy.
- 2.4 It is possible that the estimate and description are revised prior to the auction. Changes are published on BRK's website.

3 PREVIEW

- 3.1 Items up for auction are presented prior to the auction in one of BRK's showrooms. Potential bidders are encouraged to inspect the items closely and are responsible for determining the condition of the items at these previews, where they also have the opportunity to consult with the valuation experts.
- 3.2 If a potential buyer does not have the opportunity to inspect the item personally, a condition report can be drafted in most cases. The description in this report has been made according to BRK's honest conviction but is not based on scientific studies. A condition report only serves as an identification and is meant as an aid to bidders who do not have the opportunity to inspect the item at the preview.

DURING THE AUCTION

4 THE ROLE OF BRK

- 4.1 The sale of an item is facilitated by BRK on behalf of the seller, and BRK always sells items up for auction at the highest price offered during the bidding round.

- 4.2 Items up for auction can have a reserve price that has been agreed upon with the seller. The price is confidential and the item cannot be sold below this price.
- 4.3 The Live Auctions are presided over by one of the Danish Ministry of Justice's appointed auctioneers, ensuring that the auctions proceed correctly and lawfully.

5 BIDDING

- 5.1 The currency used while the auctions take place is Danish kroner. The approximate amount in euro/US dollars is shown on screens in the saleroom and also on request.
- 5.2 The auctioneer determines the size of the bid increment and the pace of the auction. Bid increments usually rise by 5% - 10% compared to the previous bid. Approximately 50-100 auction lots are sold per hour.
- 5.3 The hammer price refers both to the gavel used by the auctioneer that signifies the end of a bidding round on an item and to the price (bidding amount) that the item up for auction is sold for. See paragraph 7 regarding amounts added to the hammer price.
- 5.4 The buyer is the bidder that submits the highest bid, thereby obtaining the hammer price. At the moment the hammer price is determined, a binding purchase/sale agreement is entered into based on these conditions of purchase.
- 5.5 If bids are made on behalf of others, the bidder serves as surety for the transaction.
- 5.6 Items are purchased in their present state and condition, and regardless of the type of bidding the buyer has no right to cancel his purchase, neither under the Danish Consumer Contracts Act.
- 5.7 Bidders are required, in accordance with BRK's instructions, to identify themselves and document their ability to pay, for instance by registration of a valid debit/credit card, bank guarantee or a deposit.
- 5.8 BRK may refuse to accept a bid if a sufficient guarantee of the bidder's ability to pay is not provided, or if the bidder has previously defaulted on payment obligations on purchases from BRK.
- 5.9 The overseeing auctioneer will, in consultation with the auctioneer at the podium, decide what to do in matters of dispute concerning a bidding round.

6 TYPES OF BIDDING

- 6.1 Bidding options:
 - IN PERSON:**
Registration and obtaining the bidding paddle take place at the entrance to the saleroom. When the bidder wishes to bid, it is signalled to the auctioneer on the podium by raising the bidding paddle in the air and clearly displaying its number.
 - COMMISSION BIDS:**
The intended maximum bid can be submitted via bruun-rasmussen.dk until the start of the auction or by e-mail, fax or phone, so that the bid is received no later than 24 hours prior to the start of the auction. A commission agent bids on behalf of the bidder within the limits of the stated maximum bid. The commission agent will always bid the lowest possible amount to achieve the hammer price.

TELEPHONE BID:

With certain items it is possible to have a BRK employee call the bidder over the phone. The employee will then bid on behalf of the bidder during the auction. The service can be booked via bruun-rasmussen.dk up until three hours before the auction is set to begin.

LIVE BIDDING:

It is possible to follow the auction live and bid on the auction lots via bruun-rasmussen.dk.

PRE-AUCTION:

Some Live Auctions are preceded by an online auction. The highest bids from the online auction then represent the starting bids at the following Live Auction.

AFTER THE AUCTION

7 AMOUNTS ADDED TO THE HAMMER PRICE

- 7.1 In addition to the hammer price, see paragraph 5.3, the buyer pays a buyer's premium for the individual items as well as the other amounts described below if the conditions for these are applicable. The total amount that the buyer pays to BRK is called the "purchase price".
- 7.1.1 Buyer's Premium: The hammer price always includes an additional fee to BRK. At the Live Auctions, the fee is 25,6% of the hammer price + VAT of the fee, 32% in total. For stamps and coins, the fee is 20% of the hammer price + VAT of the fee, a total of 25%.
- 7.1.2 "LIVE Bidding": BRK's "LIVE Bidding" software is free to use for bidders on bruun-rasmussen.dk.
- 7.1.3 Full VAT: Certain items are sold at auction in accordance with the current rules regarding full VAT. In such a situation, a VAT of 25% is imposed on both the hammer price and the buyer's premium. These items are marked in the catalogue and on bruun-rasmussen.dk with the symbol "***", or with the text: "This item is subject to full VAT".
- 7.1.4 Artist's Resale Right: In accordance with Danish copyright law, a royalty fee covering the Artist's Resale Right has to be charged for works by newer Danish artists, and some foreign artists, who are either alive or have not been dead for more than 70 years. The royalty fee covering the Artist's Resale Right is charged on behalf of VISDA (Visual Rights Denmark). These works are marked "ARR" in the printed catalogue, and on bruun-rasmussen.dk the description of the works includes the text: "This lot is subject to the Artist's Resale Right". The royalty fee covering the Artist's Resale Right is added to the hammer price + the buyer's premium (excluding VAT) if the amount exceeds EUR 300, as indicated below:

Hammer price + buyer's premium (ex. VAT)	Payment Rate
300,01 - 50,000 euro	5%
50,000,01 - 200,000 euro	3%
200,000,01 - 350,000 euro	1%
350,000,01 - 500,000 euro	0.5%
over 500,000 euro	0.25%

The royalty fee covering the Artist's Resale Right cannot exceed EUR 12,500 (excluding VAT) for each item. The fee must be paid in Danish kroner, and the conversion rate (EUR/DKK) is set by VISDA.

- 7.1.5 Debit/Credit Card Fee: Amounts Added to the Hammer Price: BRK reserves the right to charge the debit/credit card fees imposed by the payment services companies. The rates will appear when bidding on bruun-rasmussen.dk and at payment.

8 PAYMENT DEADLINE

- 8.1 The purchase price falls due after the hammer price has been determined, and then the buyer has eight days to pay BRK the purchase price.

9 PAYMENT METHODS

- 9.1 The payment can be made in the following ways:
- A: With debit/credit card (Visa, MasterCard, Maestro, Diners Club, China UnionPay and JCB) or cash (up to DKK 14.999) in the saleroom or subsequently at one of

BRK's locations. Please note that we do not accept EUR 500 banknotes.

- B: With debit/credit card (Dankort, Visa, MasterCard, Diners Club and JCB) via BRK's website on the buyer's personal page.
- C: By bank transfer into BRK's account with Danske Bank: 4183 4310970638 · Swift/BIC: DABADKKK · IBAN: DK4130004310970638.

10 VAT EXEMPTION, PAYMENT & DEPOSIT

- 10.1 Some buyers can choose which type of VAT should apply to the transaction. The choice has to be communicated to BRK no later than two working days after the purchase and cannot be changed subsequently.
- A: Businesses in Denmark registered for VAT can decide that the transaction is to be conducted in accordance with the rules for full VAT, see paragraph 7.1.3.
- B: Businesses registered for VAT in another EU Member State can be exempted from paying Danish VAT if it can be proved that the item has been transported to the foreign address that the buyer has registered with BRK and which is written on the invoice. In such cases, the VAT should be settled according to the rules applicable in the country where the buyer is registered for VAT. It is advisable to consult with the local authorities. The buyer can decide not to be exempt from regular VAT and instead pay Danish VAT on second-hand goods/full VAT.
- C: Buyers residing outside the EU can be exempted from Danish VAT if it can be proved that the item has been transported out of the EU. To the extent possible and for a fee, BRK can issue the necessary export documents for the customs authorities. The buyer may decide not to be exempt from regular VAT and instead pay Danish VAT on second-hand goods/full VAT.
- 10.2 Companies registered for VAT in another EU Member State and buyers residing outside the EU must deposit the Danish VAT on the amount invoiced with BRK until the export process has been completed in a documented, lawful fashion. If the export is undertaken by one of BRK's authorized forwarding agents, the VAT does not have to be deposited. See the list of authorized forwarding agents on bruun-rasmussen.dk.

11 OVERDUE PAYMENTS

- 11.1 If payment is made after a deadline, including the deadline specified in paragraph 8, interest on overdue payments will be charged and estimated in accordance with the Danish Central Bank's official lending rate + 8% per year on the amount due.
- 11.2 If the purchase price, including interest, has still not been paid ten days after the demand for payment has been made, BRK is entitled to seek the purchase price paid by making a set-off against the deposit/by drawing on the bank guarantee or to cancel the purchase.
- 11.3 If the purchase is cancelled, BRK is entitled to sell the item at a new auction and demand the costs and any difference between the new and the earlier hammer price (including the buyer's premium) covered by the defaulting buyer.
- 11.4 In addition to debt collection, BRK may seek recovery of all due claims (including costs) not paid in a timely manner in the following ways:
- A: Making the buyer cover the costs of selling items consigned to auction by or on behalf of the buyer. The sale can be conducted without regard to an agreed reserve price. Items consigned for auction cannot be collected as long as overdue debts are unpaid.
- B: Seizing the buyer's remaining balance with BRK, including the balance from the sale of items consigned by or on behalf of the buyer, regardless of whether such receivables derive from auction sales prior to or after the date of the buyer's default on the payment.

12 PICK-UP & COLLECTION

- 12.1 The title to a purchased item passes to the buyer when the full purchase price, including any interest and fees, has been paid, and only then can the collection of an item take place.
- 12.2 In connection with the collection of a purchased item, BRK reserves the right to demand satisfactory documentation that the person who wants to pick up the item is either the buyer himself/herself or authorized by the buyer to receive the item on his/her behalf.
- 12.3 The collection of certain weapons requires presentation of a valid weapons certificate. Items with such requirements are listed with the text: "The purchase of this item requires the presentation of a valid weapons certificate" in the catalogue and on bruun-rasmussen.dk.
- 12.4 Purchased items are stored after the auction at the buyer's expense and risk. Pick-up must take place no later than eight working days after the last auction day.
- 12.5 If the item(s) is/are not picked up on time, the purchased items will be transported to a warehouse at the buyer's risk and expense. The transport costs are DKK 150 including VAT per item and the storage costs are DKK 150 including VAT per item for each week or part of a week. If an item is left unclaimed for an amount of time that results in the storage costs exceeding the value of the item, BRK will be entitled to, at the buyer's expense and risk and without regard to the reserve price, sell the item at an auction or privately. The buyer is still liable for the costs of transportation and storage not covered by such sale.
- 12.6 In accordance with current anti-money laundering laws, the buyer must in certain cases submit personal information and present a photo ID to BRK before the buyer can have the purchased item placed in his possession.

13 SHIPPING

- 13.1 If the buyer is unable to pick up the purchased item, BRK offers to pack and arrange delivery either by mail or by freight forwarder at the buyer's risk and expense. See paragraph 12.2 regarding identification.

14 EXPORT LICENSE

- 14.1 To ensure that Danish cultural heritage of vital importance remains in Denmark, the Danish Cultural Assets Commission can place an export ban on certain items. If the buyer wishes to export an item that is subject to an export ban in Denmark, the purchase will be cancelled and the Danish Cultural Assets Commission is obliged to acquire ownership of the item for the price obtained at auction. The buyer cannot raise any claims against BRK as a result of an export ban.
- 14.2 Certain items are included in the Washington Convention, also known as CITES. The purpose of CITES is to stop the trade of items made with endangered species and flora. If the item is included in the Washington Convention, CITES, Appendix 1, this will appear in the description of the item on bruun-rasmussen.dk and be marked with the symbol "☉" in the catalogue. The following rules are applicable:
- A: Items that are included in the Washington Convention, CITES, Appendix 1, can only be traded when a dispensation in the form of a CITES certificate has been obtained. BRK obtains the required certificate from the Danish Nature Agency that allows trade and export to countries within the EU. Items that were produced before 1947 can, however, be freely traded within the EU without a certificate.
- B: It is only items included in the Washington Convention, CITES, Appendix 1 that are marked individually on bruun-rasmussen.dk and in our catalogue. Items included in the Washington Convention, CITES, Appendix 2, which can be freely sold and transported within the EU, are not individually marked.
- C: Export to countries outside the EU must, regardless of the year of the item's production, always procure a CITES re-export permit from the Danish Nature Agency if the item is included in the Washington Convention, Appendix 1 and 2. This export permit can usually be

obtained without problems, if the item is either sold with a CITES certificate or was made prior to 1947. Appendix 2 items usually also receive a re-export permit without problems. Any fees charged by the Danish authorities in connection with the issuance of a re-export permit will be added to the buyer's invoice.

D: In connection with export to other countries outside the EU, special rules may apply concerning the subsequent import, and the buyer is encouraged to consult the relevant local authorities about this issue.

15 DEFECTS IN THE PURCHASED ITEMS

- 15.1 The lack of conformity rules of the Danish Sale of Goods Act may apply. Below is a non-exhaustive excerpt of the buyer's remedies in regard to lack of conformity.
- 15.2 The buyer is entitled to cancel a purchase if the description contained significant errors that have led to a higher hammer price than a correct description would have resulted in. In such cases, the total purchase price will be refunded. The buyer cannot demand payment of interest on the purchase price or demand payment of any other expenses or losses.
- 15.3 A purchase cannot be cancelled and the buyer cannot demand a refund of the purchase price or raise any other claims against BRK if the description of the item is in compliance with paragraph 2. The same applies if evidence of forgery has required the use of scientific methods that were either not available at the time of sale, were excessively costly to use or led to the damage of the item in question.
- 15.4 Claims for a cancellation of a purchase must be notified to BRK when the buyer has discovered the fact that entitles the buyer to cancel the purchase. This notice, however, has to be given no later than two years after the final pick-up date according to paragraph 12.4. The item purchased must be returned to BRK in the same condition as it was on the day it was sold at auction. If these conditions are not met, the buyer loses the right to cancel the purchase and cannot claim a refund of the purchase price. The buyer is responsible for paying the costs associated with the return of the item.

16 OBJECTIONS & LIMITATIONS OF LIABILITY

- 16.1 BRK is aware that errors, technical difficulties and external abuse or disruptive influences may occur during the auction. Bidders cannot raise any claims against BRK as a result of such events.
- 16.2 The buyer is always responsible for the correct payment of VAT and other costs, fees etc. in accordance with Danish and foreign regulations.
- 16.3 Unless otherwise stated in these conditions of purchase, BRK may never be held liable for bidders'/buyers' operating loss, loss of profits, other indirect losses or consequential loss.

17 PRIVACY POLICY

- 17.1 It is important to BRK to ensure confidentiality and security regarding the bidder's/buyer's personal information. The privacy policy can be found on bruun-rasmussen.dk.

18 COMPLAINTS, DISPUTE RESOLUTION AND APPLICABLE LAW

- 18.1 BRK can always be contacted if the bidder/buyer has a complaint.
- 18.2 If the dispute cannot be resolved, the consumer can submit a complaint to the Complaint Resolution Centre, Nævnenes Hus, Toldboden 2, 8800 Viborg, Denmark, email: naevne-neshus.dk. Consumers residing in another EU country than Denmark can submit their complaint to the European Commission's Online Dispute Resolution platform via the website: <http://ec.europa.eu/odr>.
- 18.3 In Denmark, disputes must be brought before the City Court of Copenhagen, but see paragraphs 18.2. The mandatory rules on jurisdiction apply to consumer interests.

Bruun Rasmussen Auctioneers

The above is an English translation of the Danish version of the Conditions of Purchase. In case of a dispute, only the Danish version of the present Conditions of Purchase of Bruun Rasmussen is valid.

ADDRESSES

BRUUN RASMUSSEN AUCTIONEERS

LYNGBY

NØRGAARDSVEJ 3, 2800 KONGENS LYNGBY

+45 8818 1111 / info@bruun-rasmussen.dk

GLOSTRUP

PAUL BERGSØES VEJ 20B, DK-2600 GLOSTRUP

+45 8818 1111 / info@bruun-rasmussen.dk

AARHUS

SØREN FRICHS VEJ 34D, DK-8230 ÅBYHØJ

+45 8818 1100 / aarhus@bruun-rasmussen.dk

JYLLAND AND FYN

PETER BECK

+45 8818 1186 / pb@bruun-rasmussen.dk

NICK MESSMANN

+45 8818 1232 / nic@bruun-rasmussen.dk

ESBEN SKOV JENSEN

+45 8818 1199 / ej@bruun-rasmussen.dk

REPRESENTATIVES

FRANCE AND BELGIUM

DITTE HERBORG KROGH · PARIS

+33 6 6185 4564 / dhk@bruun-rasmussen.dk

GERMANY

NICK MESSMANN

+45 8818 1232 / nic@bruun-rasmussen.dk

CONTACT DIRECTLY

KONTAKT DIREKTE

MAIN NUMBER

Bruun Rasmussen Auctioneers +45 8818 1111

CUSTOMER SERVICE

kundeservice@bruun-rasmussen.dk +45 8818 1010

customerservice@bruun-rasmussen.dk +45 8818 1010

COMMISSIONS

Lise Winther Wobido +45 8818 1013

Anja Bering Hansen +45 8818 1028

bids@bruun-rasmussen.dk

CATALOGUE REQUESTS

Kundeservice / Customer service +45 8818 1111

AUCTION GUIDANCE

Franziska Kampmann +45 8818 1026

fka@bruun-rasmussen.dk

SHIPPING

shipping@bruun-rasmussen.dk +45 8818 1055

VALUATION AND INFORMATION

VALUATION AT YOUR HOME

Henrik Schleppegrel +45 8818 1145

hsc@bruun-rasmussen.dk

Liselotte Toxværd Møller +45 8818 1234

ltm@bruun-rasmussen.dk

DECORATIVE ART, FURNITURE AND CARPETS

Ralph Lexner +45 8818 1161

rl@bruun-rasmussen.dk

CARPETS

Henrik Schleppegrell +45 8818 1145

hsc@bruun-rasmussen.dk

FURNITURE

Anders Fredsted +45 8818 1142

afr@bruun-rasmussen.dk

PORCELAIN

Line Hjorth Langkjær +45 8818 1166

lla@bruun-rasmussen.dk

SILVER

Martin Hans Borg +45 8818 1128

mhb@bruun-rasmussen.dk

ASIAN ART AND ANTIQUITIES

Alexandra Nilsson +45 8818 1164

ani@bruun-rasmussen.dk

RUSSIAN ART

Martin Hans Borg +45 8818 1128

mhb@bruun-rasmussen.dk

19TH CENTURY AND OLD MASTER PAINTINGS

Julie Arendse Voss +45 8818 1123

jav@bruun-rasmussen.dk

Birte Stokholm +45 8818 1122

bst@bruun-rasmussen.dk

Søren Kjerk Holmstrup +45 8818 11 27

skh@bruun-rasmussen

Sofie Normann Christensen +45 8818 11 25

snc@bruun-rasmussen

MODERN AND CONTEMPORARY ART

Niels Boe-Hauggaard +45 8818 1182

nbh@bruun-rasmussen.dk

Niels Raben +45 8818 1181

nr@bruun-rasmussen.dk

MODERN DESIGN

Anna Widenborg +45 8818 1187

awi@bruun-rasmussen.dk

MODERN DECORATIVE ART

Amalie Hansen +45 8818 1194

amh@bruun-rasmussen.dk

THE ART OF LUXURY

Daniel Foldschack +45 8818 1174

dfo@bruun-rasmussen.dk

FASHION

Emma Marie Huus-Thomsen +45 8818 1179

eht@bruun-rasmussen.dk

JEWELLERY

Eva Dybkjær +45 8818 1227

evd@bruun-rasmussen.dk

Rie Kertsch Dalager +45 8818 11 75

rkd@bruun-rasmussen

WRISTWATCHES

Frederik Plum +45 8818 1168

fp@bruun-rasmussen.dk

WINE

Thomas Rosendahl Andersen +45 8818 1206

tra@bruun-rasmussen.dk

COINS

Brian Lohmann +45 8818 1213

blo@bruun-rasmussen.dk

STAMPS

Torben Ringtved +45 8818 1225

tr@bruun-rasmussen.dk

ARMS, ARMOUR AND SPORTING GUNS

Ralph Lexner +45 8818 1161

rl@bruun-rasmussen.dk

COMMISSION BIDS

KOMMISSIONSBUD

It is possible to leave commission bids if you can not be present at the auction yourself. This service is free of charge.

When leaving a commission bid, you are instructing our customer service to bid up to a specified amount on your behalf.

The situation can occur that another buyer has already bid the same as you were prepared to. Are you then willing to bid further? If not the lot will be sold to another buyer.

If you do not wish to exceed your bid then write "Max", for maximum, next to the amount. You can also allow us to raise your bid by approx. 15% or approx. 25%.

The hammer price may be higher or lower than the estimated price, so it is possible to buy below the estimate. Bruun Rasmussen will always buy at the lowest price possible, as if you yourself had been present at the auction.

All commission bids are strictly confidential.

Commission bids must be submitted no later than **24 hours** prior to the start of the auction.

HOW TO MAKE A COMMISSION BID:

Complete the commission form with all pertinent information.

Indicate the lot number.

Indicate the amount you are prepared to bid.

Should this amount be the absolute maximum, please write "Max" in the appropriate column.

You can also allow us to bid by up to approx. 15% or approx. 25% more by indicating so.

Sign the commission form and make sure that Bruun Rasmussen receives it **24 hours** prior to the start of the auction.

If the information should be insufficient, Bruun Rasmussen can abstain from bidding. Bruun Rasmussen can not be held responsible for error in bidding or failure to execute bids.

INTERNET:

Commission bids can be submitted via website bruun-rasmussen.dk directly from the page with the item you want to submit a bid for.

Deadline for submissions of bids via the website is **3 hours** prior to the start of the auction.

Submitted bids are shown under "Your bids" when you are logged in. Please contact technical support on +45 8818 1114 for questions about the registration and submission of bids on the website.

For additional information, please consult "Conditions of Purchase" §1.

TELEPHONE BIDDING:

Should you wish to bid at auction by telephone, please inform Bruun Rasmussen of your name and telephone number, as well as which catalogue numbers you are interested in, no later than **3 hours** prior to the start of the auction. You will then be contacted shortly before the relevant lot comes under the hammer, thereby allowing you to participate without being in the auction room yourself.

For additional information, please consult "Conditions of Purchase" §1.

Det er muligt at afgive kommissionsbud, hvis De ikke selv kan være til stede på auktionens dag. Denne service er gratis.

Når De afgiver en kommission, beder De vores kundeservice på Deres vegne byde op til et af Dem bestemt beløb i hammerslag.

Der kan opstå den situation, at en anden køber allerede har budt det beløb, som De ønsker at afgive. Er De da villig til at gå et bud højere eller er De indforstået med at nummeret sælges til anden side?

Ønsker De ikke at byde højere så skriv "Max" ud for beløbet. Er De i tvivl om hvor højt De vil byde, kan De hæve budet med op til ca. 15% eller ca. 25%.

Salgsprisen kan blive højere eller lavere end vurderingen, så der er også mulighed for at købe til under den angivne vurdering. Vor kundeservice køber altid så billigt som muligt til Dem, som havde De selv været tilstede på auktionen.

Alle kommissioner behandles strengt fortroligt.

Kommissionsbud skal være Bruun Rasmussen i hænde senest **24 timer** før auktionens start.

SÅDAN BYDER DE:

Udfyld blanketten kommissionsbud med alle oplysninger.

Angiv katalognummer.

Angiv beløbet De ønsker at byde.

Er dette Deres absolutte maximum bedes De anføre "Max" i kolonnen.

De kan også forhøje Deres bud med henholdsvis ca. 15% eller ca. 25%, ved at indikere dette i kolonnen.

De bedes underskrive kommissionsblanketten og sikre Dem, at Bruun Rasmussen modtager den senest **24 timer** før auktionens start.

Hvis Deres oplysninger ikke er tilstrækkelige, kan Bruun Rasmussen undlade at byde for Dem, ligesom Bruun Rasmussen ikke kan gøres ansvarlig for fejl ved budgivning.

INTERNET:

Kommissionsbud kan afgives på hjemmesiden bruun-rasmussen.dk direkte fra siden med den effekt, De ønsker at byde på.

Seneste afgivelse af bud via hjemmesiden er **3 timer** før auktionens start.

Afgivne bud kan ses på hjemmesiden under "Deres bud", når de er logget ind. Kontakt teknisk support på 8818 1114 for spørgsmål om registrering og budgivning via internettet.

For yderligere information, se "Købskonditioner", §1.

TELEFONBUD:

Såfremt De ønsker at byde pr. telefon, bedes De oplyse Bruun Rasmussen Deres navn og telefonnummer samt hvilke katalognumre, De ønsker at byde på, senest **3 timer** før auktionens start. De vil så blive ringet op kort før, den aktuelle vare kommer under hammeren, og De kan på denne måde deltage i auktionen uden selv at være til stede.

For yderligere information, se "Købskonditioner" på bruun-rasmussen.dk under "Guide".

COMMISSION BIDS

KOMMISSIONSBUD

Skal være Bruun Rasmussen i hænde senest **24 timer** før auktionens start.

Must be submitted no later than 24 hours prior to the start of the auction.

AUKTION NR AUCTION NO: **922**

Navn Name: *

Adresse Address: *

Postnr./by City: *

Land Country: * Fax:

Tel: *

e-mail: CVR-nr. VAT No.:

Bank: Konto nr. Acct. No.:

Adresse Address:

Postnr./By City: Land Country:

Tel: Kontaktperson Contact:

Obligatoriske felter er mærket med en stjerne * *Mandatory fields are marked with an asterisk **

Undertegnede giver hermed fuldmagt til Bruun Rasmussen Kunstauktioner A/S om på mine vegne at købe nedennævnte katalognumre så fordelagtigt som muligt, inden for det af mig anførte beløb, i hammerslag. *I hereby request that Bruun Rasmussen bid on my behalf on the following lots up at the prices indicated below.*

Undertegnede har udfyldt ovennævnte med de ønskede oplysninger, samt har accepteret købskonditionerne. *The undersigned has supplied the required information and agrees to be bound by the conditions of purchase.*

Signatur: * B.R. kunde-nr. Client No.:

Jeg ønsker at modtage salgsresultater på de emner jeg har budt på via email dagligt efter auktion
 I wish to receive sales results on the items I have been bidding on via e-mail every day after the auction

på e-mail adressen *on this e-mail address:*

Katalog nr. Lot. No.	Beskrivelse Description	Bud kr. Bid DKK	Max	+15%	+25%

BRUUN RASMUSSEN KUNSTAUKTIONER A/S

Norgaardsvej 3 · DK-2800 Kongens Lyngby · Tel +45 8818 1111 · bids@bruun-rasmussen.dk · bruun-rasmussen.dk



Katalog nr. Lot. No.	Beskrivelse Description	Bud kr. Bid DKK	Max	+15%	+25%

Ret til ændringer forbeholdes © 2024 Bruun Rasmussen Kunstauktioner
Foto: Peter Grossen, Henrik Wichmann & Peter Madsen · Tryk: Cool Gray
Grafik og dtp: Jorge Figueredo

Bruun Rasmussen **LIVE**

– bid from wherever you are!

Experience the atmosphere of the saleroom

If you are unable to attend the Live Auctions in person, you can follow an auction in progress and experience the atmosphere in the saleroom via live streaming – just as if you were there.

Bid via Bruun Rasmussen Live

Shortly before the auction begins, you will be able to see the orange “Live” icon next to the auction in question at bruun-rasmussen.dk. Click on the icon to follow the auctioneer during the auction.

If you wish to submit a bid, simply log in prior to the auction.

The bidding process

Your bid will be treated in the same way as the bids submitted by those present in the room. If your bid is successful, you will be required to pay the standard costs which apply to all purchases from Bruun Rasmussen according to the conditions of purchase. Bruun Rasmussen accepts no liability for bids lost as a result of technical problems.

Technical assistance

If you require technical assistance, please contact our IT support team on tel. +45 8818 1114 or e-mail: support@bruun-rasmussen.dk

Please note that we are also on hand during the auctions to deal with any technical issues.

