

THE ART OF LUXURY

BRUUN RASMUSSEN
PART OF THE BONHAMS NETWORK



THE ART OF LUXURY



LIVE AUCTION 921

Wednesday 12 June 3 pm

PREVIEW

Thursday 6 June 11 am - 6 pm

Friday 7 June 11 am - 5 pm

Saturday 8 June 10 am - 4 pm

Sunday 9 June 10 am - 4 pm

or by appointment

Subscribe to our newsletter

*to receive updates on upcoming auctions,
exhibitions, and exciting events.*

[> Sign up here](#)

BRUUN RASMUSSEN

PART OF THE BONHAMS NETWORK

Nørgaardsvej 3 · DK-2800 Lyngby · Tel +45 8818 1111

info@bruun-rasmussen.dk · bruun-rasmussen.com



Join Exciting Talks During the Preview!

Thursday 6 June 11 am–6 pm

11 am Opening of Preview

3–6 pm Bubbly and Music

4 pm Talk: “Skagen Seen With New Eyes”

by cultural critic and author Lilian Munk Rösing, based on art works from the “Northern Light – the Artists’ Colony at Skagen” Auction.

Friday 7 June 11 am–5 pm

3 pm Talk: “Antique Silver on the Dinner Table”

by specialist in antique silver and royal collectibles Martin Hans Borg.

Saturday 8 June 10 am–4 pm

1 pm Talk: “Pocket Watches – Why Collect Them, and What Directions Can You Go in as a Collector?”

by master watchmakers Rune Bakkendorff and Søren Andersen in conversation with our watch specialist Frederik Plum.

2 pm Talk: “Danish Friendship Portraits from Rome”

by art dealer Peter Titelbech about Circolo Scandinavo’s collection of more than 70 portraits by Danish and Nordic artists who, from the early 1800s and up to around 1880, were drawn to Italy and not least the capital Rome.

Freshly ground coffee will be served by Oliver from Amiga Coffee on all the days.

DAYS OF SALE

Monday	10 June		
	4 pm	Fine art	1 - 119
	7 pm	Northern Light - the Artists’ Colony at Skagen	121 - 191
Tuesday	11 June		
	1 pm	Asian art	192 - 257
	3 pm	Antiques - decorative art, furniture and carpets	258 - 358
	5 pm	Modern art	
Wednesday	12 June - The Art of Luxury		
	3 pm	Handbags	561 - 591
		Jewellery	592 - 764
	7 pm	Wristwatches	765 - 826
Thursday	13 June		
	4 pm	Modern decorative art and design	
	6 pm	Fine spirits - Online Auction at bruun-rasmussen.dk	
	8 pm	Champagne - Online Auction at bruun-rasmussen.dk	

IMPORTANT INFORMATION ABOUT BIDDING AT THE AUCTION

Bonhams’ international customers can also bid at selected Bruun Rasmussen Live Auctions via Bonhams’ website: bonhams.com

DEADLINE FOR CLAIMING ITEMS: WEDNESDAY 26 JUNE

Items bought at this auction must be paid no later than eight days from the date of the invoice and claimed at Nørgaardsvej 3 in Lyngby by Wednesday 26 June at the latest. Otherwise, they will be moved to Bruun Rasmussen’s storage facility at Paul Bergsøes Vej 16 in Glostrup at the buyer’s expense and risk. Here, they can be picked up from Friday 28 June. This transportation will cost DKK 150 per item VAT included, and storage will cost DKK 150 per item per week VAT included.

SPECIALISTS IN JEWELLERY,
FASHION, WATCHES AND WINE



*Head of Department of Jewellery,
Fashion and Watches*
Daniel Foldschack
+45 8818 1174
dfd@bruun-rasmussen.dk



Jewellery
Eva Dybkjær
+45 8818 1227
evd@bruun-rasmussen.dk



Jewellery
Rie Kertsch Dalager
+45 8818 1175
rkd@bruun-rasmussen.dk



Jewellery
Kristine Toftgaard Tanderup
+45 8818 1237
ktt@bruun-rasmussen.dk



Jewellery
Rikke Palmø
+45 8818 1171
rp@bruun-rasmussen.dk



Handbags and Fashion
Emma Marie Huus-Thomsen
+45 8818 1179
eht@bruun-rasmussen.dk



Director of Valuation and Sales
Kasper Nielsen
+45 8818 1121
kn@bruun-rasmussen.dk



Representative France + Belgium
Ditte Herborg Krogh
+33 6 6185 4564
dhk@bruun-rasmussen.dk



Wristwatches
Frederik Plum
+45 8818 1168
fp@bruun-rasmussen.dk



Wristwatches
Esben Skov Jensen
+45 8818 1199
ej@bruun-rasmussen.dk



Head of Department of Wine
Thomas Rosendahl Andersen
+45 8818 1206
tra@bruun-rasmussen.dk



Wine
Thomas Løbner-Olesen
+45 8818 1241
tlo@bruun-rasmussen.dk



Global Head of Jewellery - Bonhams
Jean Ghika
+44 20 7468 8282
jean.ghika@bonhams.com



Global Head of Watches - Bonhams
Jonathan Darracott
+44 20 7447 7412
jonathan.darracott@bonhams.com



Senior International Director - Wine - Bonhams
Richard Harvey
+44 20 7468 5811
richard.harvey@bonhams.com

HANDBAGS

Wednesday 12 June 3 pm

Lot 561 - 591





561

**561
CHRISTIAN DIOR**

A "Saddle" bag of black calf skin with gold tone hardware, short handle, one exterior back pocket, one compartment with one interior zipped pocket and black suede lining. H. 13-21 x W. 25 x D. 6 cm. 2022. Accompanied by box and receipt from 2022. Retail price in 2024 DKK 28,343,-
DKK 12,000-15,000 / € 1,600-2,000



563

**563
CHRISTIAN DIOR**

A "Mini Lady Dior" bag of black crocodile skin (Crocodile Porosus) with silver tone hardware embellished with numerous white stones, two handles, one compartment with one interior zipped pocket and black leather lining. H. 15.5 x W. 18 x D. 6 cm. Accompanied by dust bag.

This lot is subject to CITES export/import restrictions. Please contact the department for further details.

DKK 40,000-50,000 / € 5,350-6,700

**564
HERMÈS**

A "Sac En Vie 26" bag of black crocodile skin (Crocodile Niloticus) with palladium hardware, two handles, one zipped compartment with three interior pockets and black leather lining. H. 16 x W. 26 x D. 12 cm. Accompanied by dust bag.

This lot is subject to CITES export/import restrictions. Please contact the department for further details. DKK 30,000-35,000 / € 4,000-4,700



564

**562
CHANEL**

A "Classic Double Flap" bag of black quilted leather with gold tone hardware, double chain strap, one exterior back pocket, CC turn lock, one compartment with four interior pockets and burgundy leather lining. H. 15 x W. 26 x D. 6.5 cm. 2000-2002. DKK 20,000-25,000 / € 2,700-3,350



562



565

**565
HERMÈS**

A "Kelly 32" bag of black crocodile skin (Crocodile Niloticus) with gold tone hardware, short handle, detachable shoulder strap, one compartment with three interior pockets and black leather lining. Accompanied by padlock with two keys in clochette. H. 23 x W. 33 x D. 12 cm. Accompanied by dust bag.

This lot is subject to CITES export/import restrictions. Please contact the department for further details. DKK 80,000 / € 10,500



566

566
LOUIS VUITTON
 A "Patchwork Capucines Mini" bag of beige and light pink Taurillon leather and light pink Karung snake skin with gold tone hardware, short handle, detachable wide shoulder strap, one compartment with one interior pocket and light pink leather lining. Accompanied by light pink silk twilly with monogram print. H. 14 x W. 20 x D. 8 cm. (2)
 Accompanied by carrier bag, dust bag and box.
 DKK 18,000–20,000 / € 2,400–2,700

567
LOUIS VUITTON
 A "Capucines Mini" bag of Rose Tourmaline shiny alligator skin (Alligator Mississippiensis) with gold tone hardware, short handle, detachable and adjustable shoulder strap, two compartments with one interior pocket and light pink leather lining. H. 13 x W. 20 x D. 8 cm. 2018.
 Accompanied by carrier bag and dust bag.

This lot is subject to CITES export/import restrictions. Please contact the department for further details.
 DKK 35,000–40,000 / € 4,700–5,350



567

568
CHRISTIAN DIOR
 A "Lady Dior" bag of light purple cannage quilted leather with silver tone hardware, two handles, detachable shoulder strap, one zipped compartment with one interior zipped pocket and light brown fabric lining. H. 21 x W. 25 x D. 12 cm. 2014.
 Accompanied by dust bag.
 DKK 12,000–15,000 / € 1,600–2,000



568

569
LOUIS VUITTON
 A "Capucines Mini" bag of Raisin Purple shiny alligator skin (Alligator Mississippiensis) with silver tone hardware, short handle, detachable and adjustable shoulder strap, two compartments with one interior pocket and leather lining. H. 13 x W. 20 x D. 8 cm. 2018.
 Accompanied by carrier bag and dust bag.
 This lot is subject to CITES export/import restrictions. Please contact the department for further details.
 DKK 35,000–40,000 / € 4,700–5,350



569

570
HERMÈS
 A "Birkin 35" bag of purple Togo leather with palladium hardware, two handles, one compartment with two interior pockets and purple leather lining. Accompanied by padlock with two keys in clochette. H. 26 x W. 35 x D. 18 cm. 2012.
 Accompanied by dust bag and box.
 DKK 40,000–50,000 / € 5,350–6,700



570



571

571

CHANEL

A "Medium Classic Flap" bag of dark pink quilted leather with silver tone hardware, double chain strap, one exterior back pocket, CC turn lock, one compartment with four interior pockets and dark pink leather lining. H. 17 x W. 26 x D. 6.5 cm. 2009-2010.

Accompanied by box, dust bag and receipt for repair of clasp in 2020. DKK 40,000 / € 5,350

572

LOUIS VUITTON

A "Capucines BB" bag of Coquelicot ostrich leather (Struthio Camelus) with silver tone hardware, short handle, detachable shoulder strap, two compartments with one interior zipped pocket and red leather lining. H. 17 x W. 27 x D. 9 cm. 2014.

Accompanied by carrier bag, dust bag and box.

DKK 30,000-35,000 / € 4,000-4,700



572





573

**573
LOUIS VUITTON**

A "Capucines Mini" bag of Rose Spinelle Pink shiny alligator skin (*Alligator Mississippiensis*) with silver tone hardware, short handle, detachable and adjustable shoulder strap, two compartments with one interior pocket and pink leather lining. H. 13 x W. 20 x D. 8 cm. 2017.

Accompanied by carrier bag and dust bag.

This lot is subject to CITES export/import restrictions. Please contact the department for further details.

DKK 35,000–40,000 / € 4,700–5,350

**574
HERMÈS**

A "Sac A Plume" bag of pink lizard skin (*Varanus Niloticus*) with palladium hardware, two handles and one zipped compartment with pink leather lining. H. 16 x W. 22 x D. 8 cm. 2006.

Accompanied by dust bag.

DKK 15,000–20,000 / € 2,000–2,700



574



575

**575
LOUIS VUITTON**

A "Capucines BB" bag of Grenade matte crocodile skin (*Crocodile Porosus*) with gold tone hardware, short handle, detachable shoulder strap, two compartments with one interior zipped pocket and pink leather lining. H. 18 x W. 27 x D. 9 cm. 2014.

Accompanied by carrier bag, dust bag and box.

This lot is subject to CITES export/import restrictions. Please contact the department for further details.

DKK 50,000–60,000 / € 6,700–8,050



576

576

HERMÈS

A rare "Himalaya Birkin 30" of crocodile skin (Crocodile Niloticus) with palladium hardware, two handles, one compartment with two interior pockets and grey leather lining. Accompanied by padlock with two keys in clochette. H. 23 x W. 30 x D. 16 cm. 2015.

Accompanied by rain coat, dust bag and box.

This lot is subject to CITES export/import restrictions. Please contact the department for further details.

One of the rarest and most prestigious handbags ever created, this Himalaya Hermès Birkin is the pinnacle of every collection. Manufactured in highly limited numbers from Crocodile Niloticus, its colouring reflects the sublime tinges of the Himalayan mountain range. Part of the unique colours has to do with the crocodile skin's natural colour qualities, but the rest is a result of meticulous finishing techniques. This exclusive collector's item was handcrafted in 2015 and purchased by a private Danish collector.

DKK 600,000–800,000 / € 80,500–105,000

577

HERMÈS

A "Constance 24" bag of dark brown crocodile skin (Crocodile Porosus) with palladium hardware, shoulder strap, two compartments with two interior pockets and dark brown leather lining. H. 18.5 x W. 23 x D. 6 cm. 2008.

Accompanied by dust bag and box.

This lot is subject to CITES export/import restrictions. Please contact the department for further details.

DKK 70,000–90,000 / € 9,400–12,000



577

580

CHANEL

A "Boy Small" bag of black quilted leather with ruthenium hardware, double chain strap, one compartment with one interior pocket and black fabric lining. H. 13 x W. 20 x D. 7.5 cm. 2019.

Accompanied by dust bag.

Retail price app. DKK 43,900,-

DKK 18,000–20,000 / € 2,400–2,700



580



578

578

HERMÈS

A "Birkin 30" bag of dark brown crocodile skin (Crocodile Porosus) with palladium hardware, two handles, one compartment with two interior compartments and dark brown leather lining. Accompanied by padlock with two keys in clochette. H. 23 x W. 30 x D. 15 cm. 2010.

Accompanied by dust bag.

This lot is subject to CITES export/import restrictions. Please contact the department for further details.

DKK 150,000–180,000 / € 20,000–24,000



579

579

HERMÈS

A "Kelly Long" clutch of dark brown crocodile skin (Crocodile Porosus) with palladium hardware, short handle, one compartment with one interior pocket and dark brown leather lining. H. 13 x W. 31 x D. 2 cm. 2010.

Accompanied by dust bag and box.

This lot is subject to CITES export/import restrictions. Please contact the department for further details. DKK 80,000–100,000 / € 10,500–13,500

581

CHANEL

A "Boy" tote bag of black chevron quilted leather with ruthenium hardware, two handles, two compartments divided by a zipped pocket, four interior pockets and grey fabric lining. H. 26 x W. 36 x D. 17 cm. 2014–2015.

Accompanied by carrier bag, box, dust bag, Carte d'authenticité, booklet, ribbon and silk paper.

DKK 25,000–30,000 / € 3,350–4,000



581





582

582
LOUIS VUITTON

A "Capucines Mini" bag of white alligator skin (Alligator Mississippiensis) with silver tone hardware, short handle, detachable and adjustable shoulder strap, two compartments with one interior pocket and white leather lining. H. 13 x W. 20 x D. 18 cm. 2018.

Accompanied by carrier bag and dust bag.

This lot is subject to CITES export/import restrictions. Please contact the department for further details.

DKK 35,000–40,000 / € 4,700–5,350

583
LOUIS VUITTON

A "Capucines Mini" bag of Jaune D'or shiny alligator skin (Alligator Mississippiensis) with silver tone hardware, short handle, detachable and adjustable shoulder strap, two compartments with one interior pocket and yellow leather lining. H. 13 x W. 20 x D. 8 cm. 2019.

Accompanied by carrier bag and dust bag.

This lot is subject to CITES export/import restrictions. Please contact the department for further details.

DKK 35,000–40,000 / € 4,700–5,350



583

584
LOUIS VUITTON

A rare "Rainbow Capucines Mini" bag of black and multi coloured alligator skin (Alligator Mississippiensis) with gold tone hardware, short handle, detachable and adjustable shoulder strap, two compartments with one interior pocket and black leather lining. H. 14 x W. 20 x D. 8 cm. 2020.

Accompanied by carrier bag, dust bag and box.

This lot is subject to CITES export/import restrictions. Please contact the department for further details.

DKK 40,000–45,000 / € 5,350–6,050



584

585
HERMÈS

A "Constance Mini" bag of green ostrich skin (Struthio Camelus) with palladium hardware, a shoulder strap, one exterior back pocket, two compartments with two interior pockets and green leather lining. H. 15 x W. 18 x D. 5 cm. 2017.

Accompanied by dust bag.

DKK 50,000–60,000 / € 6,700–8,050



585

586
LOUIS VUITTON

A "Capucines Mini" bag of dark brown, green and golden alligator skin (Alligator Mississippiensis) with gold tone hardware, short handle, detachable and adjustable shoulder strap, two compartments with one interior pocket and dark brown leather lining. H. 13 x W. 20 x D. 8 cm. 2019.

Accompanied by carrier bag, dust bag and box.

This lot is subject to CITES export/import restrictions. Please contact the department for further details.

DKK 40,000–45,000 / € 5,350–6,050



586



587
LOUIS VUITTON

A "Capucines Mini" bag of Celadon Green mint green alligator skin (Alligator Mississippiensis) with gold tone hardware, short handle, detachable and adjustable shoulder strap, two compartments with one interior pocket and mint green leather lining. H. 13 x W. 20 x D. 8 cm. 2018.

Accompanied by carrier bag and dust bag.

This lot is subject to CITES export/import restrictions. Please contact the department for further details.

DKK 35,000–40,000 / € 4,700–5,350



587



588

588
LOUIS VUITTON

A "Capucines Mini" bag of light blue, green and golden crocodile skin (Crocodile Porosus) with gold tone hardware, short handle, detachable and adjustable shoulder strap, two compartments with one interior pocket and grey leather lining. H. 13 x W. 20 x D. 8 cm. 2021.

Accompanied by carrier bag, dust bag and box.

This lot is subject to CITES export/import restrictions. Please contact the department for further details.

DKK 40,000–45,000 / € 5,350–6,050

589
LOUIS VUITTON

A "Capucines Mini" bag of Bleu Canard shiny alligator skin (Alligator Mississippiensis) with silver tone hardware, short handle, detachable and adjustable shoulder strap, two compartments with one interior pocket and turquoise leather lining. H. 14 x W. 21 x D. 8 cm. 2016.

Accompanied by carrier bag and dust bag.

This lot is subject to CITES export/import restrictions. Please contact the department for further details.

DKK 35,000–40,000 / € 4,700–5,350



589

Wednesday 12 June 3 pm

Lot 592 - 764

590
HERMÈS

A "Birkin 30" bag of matte navy blue alligator skin (Alligator Mississippiensis) with palladium hardware, two handles, one compartment with two interior pockets and dark blue leather lining. Accompanied by padlock with two keys in clochette. H. 24 x W. 30 x D. 15 cm. 2017.

Accompanied by rain coat, dust bag and box.

This lot is subject to CITES export/import restrictions. Please contact the department for further details.

DKK 140,000-150,000 / € 19,000-20,000



590

591
LOUIS VUITTON

A "Capucines Mini" bag of Saphir shiny alligator skin (Alligator Mississippiensis) with gold tone hardware, short handle, adjustable and detachable shoulder strap, two compartments with one interior pocket and dark blue leather lining. H. 13 x W. 20 x D. 8 cm. 2016.

Accompanied by carrier bag, dust bag and box.

This lot is subject to CITES export/import restrictions. Please contact the department for further details.

DKK 35,000-40,000 / € 4,700-5,350



591





592

592
BJÖRN WECKSTRÖM

b. Helsinki 1935

A bracelet of 18k gold. Weight app. 135 g. W. 4 cm.
L. app. 18.5 cm. Lapponia, Finland 1970.

Accompanied by original suede case.

DKK 60,000–65,000 / € 8,050–8,700



594

594
KNUD V. ANDERSEN

A wide bracelet of 14k matted gold. Weight app.
98.5 g. W. 25 mm. Inside diam. app. 5.7 cm.

DKK 30,000–35,000 / € 4,000–4,700

595
BJÖRN WECKSTRÖM

b. Helsinki 1935

A "Tundra" necklace of 18k gold. Weight app. 51 g.
W. 8 mm. L. 45 cm. Lapponia, Finland.

Accompanied by original case.

DKK 25,000–35,000 / € 3,350–4,700



595



593

593
BJÖRN WECKSTRÖM

b. Helsinki 1935

A "Flowering Wall" tourmaline necklace set with
numerous partly polished tourmaline crystals,
mounted in 18k gold. Weight app. 80.5 g. Pendant
4.2 x 4.7 cm. L. app. 57 cm. Lapponia, Finland
1970–1980s.

DKK 20,000–25,000 / € 2,700–3,350



596

596
LAPPONIA

A bracelet of 14k partly matted gold. Weight app.
60 g. W. 14–18 mm. L. 18 cm. Finland, 1977.

DKK 12,000–15,000 / € 1,600–2,000





597

GILBERT ALBERT

A diamond necklace set with numerous brilliant-cut diamonds, mounted in 18k partly matted gold and white gold. Weight app. 108 g. W. 6-16 mm. Front app. 2.5 x 3.5 cm. L. app. 40 cm.

Accompanied by original suede jewellery pouch.

DKK 45,000-50,000 / € 6,050-6,700



597



598

598

GILBERT ALBERT

A diamond jewellery set comprising a ring, a bracelet and a pair of ear clips each set with numerous brilliant-cut diamonds, mounted in 18k partly matted gold and white gold. Weight in total app. 105 g. Bracelet W. 1-3.4 cm. Internal diam. app. 5 cm. Ear clips L. 25 mm. Size 51. (4)

Accompanied by three extra links for the bracelet.

DKK 45,000-50,000 / € 6,050-6,700



599

599

EVALD NIELSEN

A necklace of 14k partly ornamented gold. Weight app. 58.5 g. W. 10 mm. L. 40.5 cm.

Accompanied by original case.

DKK 12,000-15,000 / € 1,600-2,000

600

HANS HANSEN

b. København, d. s.p.

A jewellery set comprising a bracelet and necklace of 14k gold. Weight in total app. 103 g. W. 11 mm. L. 18.6-41.4 cm. (2)

Accompanied by case.

DKK 20,000 / € 2,700



600

601^{ARR}
JYTTE KLØVE

b. 1949

A "Honeymoon" moonstone and diamond ring set with a cabochon moonstone and a brilliant-cut diamond weighing app. 0.10 ct., mounted in 14k gold. Weight app. 26.5 g. W. 20 mm. Size 53. 1987.
DKK 20,000 / € 2,700



601



602

602^{ARR}
JYTTE KLØVE

b. 1949

A "Möbius" diamond bangle set with numerous brilliant-cut diamonds, mounted in 14k gold. Weight app. 43.5 g. W. 5 mm. Inside diam. 6 x 7.3 cm. DKK 25,000–30,000 / € 3,350–4,000



603

603^{ARR}
JYTTE KLØVE

b. 1949

A "Night of stars" diamond bangle set with numerous brilliant-cut diamonds weighing a total of app. 2.22 ct., mounted in 14k gold and oxidised silver. Weight app. 142.5 g. W. 3.5 cm. Measurement app. 6.5 x 7 cm. 1993.

Retail price DKK 230,000,-

Accompanied by case.

The bangle has been exhibited in a retrospective exhibition at the Danish National Bank in 2017 when Jytte Kløve received the bank's honorary grant of 1968.

DKK 70,000 / € 9,400

604
OROMALIA

A wide diamond bracelet set with numerous brilliant-cut diamonds weighing a total of app. 4.23 ct., mounted in 18k rose gold. Colour: F-G. Clarity: VS-SI. Weight app. 81 g. W. 3.5 cm. L. 18.5 cm.

Aquired at Hartmann's.

Accompanied by case and certificate no. 23192 from Hartmann's.

Estimated insurance value DKK 198,000,-

DKK 80,000–100,000 / € 10,500–13,500



604

605^{ARR}

BODIL BINNER

A unique diamond ring set with four emerald-cut and numerous princess-cut diamonds weighing a total of app. 3.08 ct., mounted in 14k white gold. Colour: F-G. Clarity: VVS-SI. W. 11 mm. Size 52.

Accompanied by Ruben Svart certificate no. 14071411361.

Retail price app. DKK 110,000.

DKK 65,000-70,000 / € 8,700-9,400



605



608

608

CHR. RASMUSSEN

A diamond ring set with an old-cut diamond weighing app. 2.70 ct. flanked by two baguette-cut diamonds weighing a total of app. 0.12 ct., mounted in 14k white gold. Colour: M. Clarity: VS. Size 54.

Accompanied by case.

DKK 90,000-100,000 / € 12,000-13,500

606

TIFFANY & CO.

A tanzanite and diamond ring set with an emerald-cut tanzanite weighing app. 6.50 ct. flanked by four baguette-cut diamonds, mounted in 18k white gold. W. 10 mm. Size 50.5.

Accompanied by case.

DKK 35,000-45,000 / € 4,700-6,050



606



609

609

HARTMANN'S

A diamond ring set with an oval-cut diamond weighing app. 2.33 ct. encircled by numerous brilliant-cut diamonds and seven brilliant-cut pink diamonds weighing a total of app. 0.75 ct., mounted in platinum. Center stone colour: G. Clarity: VVS2. Size 48.

Accompanied by Hartmann's certificate no. 33913, receipt no. 46678, GIA certificate no. 210502174579 and case.

Estimated insurance value DKK 379,500,-

DKK 150,000 / € 20,000



607

607

HARTMANN'S

A "Signature" diamond ring set with a brilliant-cut diamond weighing 1.10 ct. flanked by numerous brilliant-cut diamonds weighing a total of app. 0.75 ct., mounted in platinum and a 'H' in gold. Colour: G. Clarity: VS. Size 49.

Accompanied by GIA certificate no. 6345210256, Hartmann's certificate no. 37288 and original case.

Estimated insurance value DKK 206,000.

DKK 65,000-85,000 / € 8,700-11,500

610
BULGARI

A "B.Zero" diamond ring set with numerous brilliant-cut diamonds weighing a total of app 0.88 ct., mounted in 18k white gold. Colour: H. Clarity: VVS-VS. Weight app. 13.5 g. W. 10 mm. Size 56.

DKK 20,000–25,000 / € 2,700–3,350



610



611

611
BULGARI

A "Bulgari" diamond necklace set with numerous brilliant-cut diamonds, mounted in 18k white gold. Serial no. 2337AL. W. 6-21 mm. L. 48 cm. Accompanied by original case and booklet.

DKK 20,000–25,000 / € 2,700–3,350



612

612
BULGARI

A "Bulgari" diamond bracelet set with numerous brilliant-cut diamonds, mounted in 18k white gold. Serial no. 2337AL. W. 6-21 mm. L. 20.5 cm. Accompanied by original case.

DKK 10,000–15,000 / € 1,350–2,000

613
KLAUS RYGAARD

A sapphire and diamond ring set with a fancy-cut pink sapphire weighing app. 3.25 ct. flanked by two oval-cut diamonds weighing a total of app. 0.86 ct., mounted in 18k gold and white gold. Colour: H. Clarity: VS-SI. Weight app. 5.5 g. W. 10 mm. Size 55. Accompanied by original case and jewellery description. Retail price DKK 96,995,-

DKK 35,000–40,000 / € 4,700–5,350



613

614 *
BULGARI

An "Allegra" topaz, peridote, garnet and diamond ring set with a cabochon topaz weighing app. 0.70 ct., an emerald-cut peridote weighing app. 1.00 ct., an oval-cut garnet weighing app. 0.65 ct. and numerous brilliant-cut diamonds weighing a total of app. 0.55 ct., mounted in 18k white gold. Weight app. 7.5 g. W. 9 mm. Size 52.

DKK 20,000–25,000 / € 2,700–3,350



614



615

615 *
BULGARI

An "Allegra" topaz, citrine, peridote, tourmaline and diamond ring set with an emerald-cut topaz, a cabochon citrine and peridote, an oval-cut tourmaline and numerous brilliant-cut diamonds, mounted in 18k white gold. Weight app. 12 g. W. 15 mm. Size 52.

DKK 30,000–35,000 / € 4,000–4,700



616

616
PIERINO FRASCAROLO

b. Milano 1928, d. 1978

A diamond and sapphire ring in the shape of a tiger set with single-cut diamonds, two circular-cut sapphires and multi-coloured enamel, mounted in 18k gold. Weight app. 22.5 g. W. 20 mm. Size 57. 1960s.

DKK 35,000–40,000 / € 4,700–5,350



617

617
DANIELA VILLEGAS

An exquisite unique "Palais Royal" ring in the shape of a beetle set with a cabochon opal encircled by numerous circular-cut multi-coloured sapphires weighing a total of app. 1.30 ct. and two circular-cut emeralds, mounted in 18k rose gold. Weight app. 17 g. Front 2 x 3.4 cm. Size 54.

Designer Daniela Villegas was born and raised in Mexico City and describes herself as a maximalist with a love for colour and nature. Each of her innovative pieces of art is handcrafted in Los Angeles and has a deep symbolism. Her designs are instantly recognizable and collected by people all around the world for their one-of-a-kind details, especially her insect jewellery such as this opal beetle.

Retail price app. US 17,500.

Accompanied by case.

DKK 40,000–50,000 / € 5,350–6,700





618
CHOPARD

A "Happy Spirit" diamond pendant set with numerous brilliant-cut diamonds weighing a total of app. 1.87 ct., mounted in 18k gold. Accompanied by a three-strand necklace of 18k gold. Serial no. 2905233. Pendant W. 3.2 cm. L. incl. eye-let 4 cm. Necklace L. 60 cm. (2)

Accompanied by original case, gurantee certificate and receipt from 2007.

DKK 15,000–20,000 / € 2,000–2,700



618



619
CARTIER

A "Silverium Panthère" bracelet in the shape of two panthers, mounted in 18k gold and oxidised silver. Signed Cartier. Serial no. 274146. Weight app. 48 g. Diam. app. 5.7 cm.

Accompanied by French jewellery certificate.

DKK 30,000–40,000 / € 4,000–5,350



619

620
VAN CLEEF & ARPELS

A pair of cufflinks with detachable polished onyx, tiger eye and gold stick, mounted in 18k gold. L. 22 mm. (8)

Hallmark VCA B9020286. Accompanied by a velvet pouch.

DKK 18,000–20,000 / € 2,400–2,700



620



621

621
CHAUMET

A wide bangle set with a polished and matted gold pattern, mounted in 18k white gold. Weight app. 70 g. W. 9 mm. Inside diam. app. 6.4 cm.

Accompanied by certificiate no. 168607-750.

DKK 35,000 / € 4,700



622

622
CHAUMET

A bangle set with a polished and matted gold pattern, mounted in 18k gold. Weight app. 39 g. W. 6 mm. Inside diam. app. 6.4 cm.

DKK 15,000–20,000 / € 2,000–2,700



623
GEORG JENSEN
 b. Rådvaad 1866, d. Hellerup 1935
 A malachite necklace set with numerous cabochon malachites, mounted in oxidized sterling silver. Design no. 6. W. 1.8-3.2 cm. L. 42.5 cm. Circa 1933-1944.
 DKK 12,000-15,000 / € 1,600-2,000

623

624
GEORG JENSEN
 b. Rådvaad 1866, d. Hellerup 1935
 A lapis lazuli necklace set with numerous cabochon lapis lazuli, mounted in sterling silver. Design no. 1. W. 11-14 mm. L. 36 cm. Georg Jensen after 1945.
 The necklace is Georg Jensen's first design no. 1, designed in circa 1906. In the original design the necklace had a bridle clasp, this newer design after 1945 is with an integrated clasp.
 DKK 12,000-15,000 / € 1,600-2,000



624



625

625
ASTRID FOG
 b. 1911, d. 1993
 A jewellery set comprising a wide bracelet containing multiple square hollow links and a ring with a single square link of sterling silver. Design no. 193 and 143. Bracelet W. 5.5 cm. L. 19.9 cm. Size 53. Georg Jensen after 1945. (2)
 The design originates back in 1970's.
 Accompanied by original case.
 DKK 10,000-15,000 / € 1,350-2,000



626

626
GEORG JENSEN
 b. Rådvaad 1866, d. Hellerup 1935
 A wide "Moonlight Grape" bangle of sterling silver. Design no. 551B. Weight app. 212 g. W. 2.9-4 cm. Inside diam. app. 4.5 x 6.8 cm. L. ca. 17 cm. Size S/M. Georg Jensen after 1945.
 Retail price DKK 21,000,-
 Accompanied by original case.
 DKK 10,000-12,000 / € 1,350-1,600

627
GEORG JENSEN & WENDEL
 A sapphire and diamond ring set with a brilliant-cut diamond weighing app. 1.08 ct. and numerous square-cut sapphires weighing a total of app. 3.02 ct., mounted in platinum. Colour: D. Clarity: Flawless. W. 16 mm. Size 54. 1966.
 Accompanied by Georg Jensen receipt from 1966, a certificate with GIA nomenclature made by Jørgen Møller and an original leather case.
 Jørgen Møller was the CEO of Georg Jensen & Wendel in Copenhagen 1951 to 1979 and chairman of The Danish gemmological society, 1979-1984.
 DKK 30,000-35,000 / € 4,000-4,700



627



628

628
GEORG JENSEN
 b. Rådvaad 1866, d. Hellerup 1935
 A sapphire and diamond ring set with an oval-cut sapphire weighing app. 0.75 ct. and a brilliant-cut diamond weighing app. 0.80 ct. flanked by six single-cut diamonds weighing a total of app. 0.18 ct., mounted in 18k white gold. Colour: G. Clarity: SI. Weight app. 13.5 g. Measurements sapphire 3.38 x 7.58 mm. W. 10 mm. Size 58. Georg Jensen after 1945.
 Accompanied by case.
 DKK 12,000-15,000 / € 1,600-2,000





629

629
GEORG JENSEN

b. Rådvaed 1866, d. Hellerup 1935

A "Fusion" diamond bangle set with numerous brilliant-cut diamonds weighing a total of app. 0.57 ct., mounted in 18k white gold. Designed by Nina Koppel. Colour: F-G. Clarity: VS. Weight app. 35 g. W. 8 mm. Inside diam. app. 6.3 cm. Size M.

Retail price app. DKK 50,000,-
DKK 20,000-25,000 / € 2,700-3,350



632
MIKIMOTO

A long glamorous two stranded pearl necklace set with numerous cultured pearls and a diamond clasp set with numerous brilliant-cut diamonds, mounted in 14k gold. Clasp W. 20 mm. Pearl diam. app. 7 mm. L. 77 cm. Tokyo, Japan.

Accompanied by original case with silk lining.
DKK 40,000-50,000 / € 5,350-6,700

630
OLE LYNGGAARD

b. 1936

A pair of "Dew Drops" diamond ear pendants each set with numerous brilliant-cut diamonds weighing a total of app. 1.42 ct., mounted in 18k gold. Colour: F-G. Clarity: VS. L. 17 mm. (2)

Accompanied by a velvet pouch and original receipt from 19.12.2023 for DKK 61,900,-

DKK 35,000-40,000 / € 4,700-5,350



630



631

631
MARIANNE DULONG

A pair of large "Kharisma" diamond ear pendants each set with five brilliant-cut diamonds weighing a total of app. 0.08 ct., mounted in 18k gold. Colour: F-G. Clarity: VS. L. 6.9 cm. (2)

Retail price DKK 26,900,-
Accompanied by jewellery pouch.

DKK 10,000-12,000 / € 1,350-1,600



632

633
DIAMONDS BY VON ARENSTORFF

A diamond ring set with an oval-cut diamond weighing app 0.40 ct. encircled by numerous brilliant-cut diamonds weighing a total of app. 0.64 ct., mounted in 14k gold. Colour: H. Clarity: VS. Size 54.

Accompanied by case. DKK 15,000 / € 2,000



633



634

634
A diamond ring set with a cut-cornered square modified brilliant-cut diamond weighing 1.05 ct. flanked by numerous brilliant-cut diamonds weighing a total of app. 0.50 ct., mounted in 18k white gold. Colour: D-E. Clarity: VVS-VS. Size 54.
The center stone is accompanied by GIA certificate no. 2221092906. DKK 45,000–50,000 / € 6,050–6,700

635

A pair of diamond ear studs each set with a princess-cut diamond weighing a total of app. 3.00 ct., mounted in 18k white gold. Colour: F-G. Clarity: VS1. (2)
Accompanied by GIA certificate no. 2456906389 and 7468643123.

DKK 125,000–150,000 / € 17,000–20,000



635



636

636
A diamond bracelet set with numerous princess-cut diamonds weighing a total of app. 11.25 ct., mounted in 18k white gold. Colour: G-H. Clarity: SI. L. 17.8 cm.
DKK 70,000–80,000 / € 9,400–10,500

637
A pair of diamond ear studs each set with a radiant-cut diamond weighing a total of 3.01 ct., mounted in 18k white gold. Colour: D-E. Clarity: SI. (2)
Accompanied by certificate no. 7463277720 and 1458647774.
DKK 80,000–100,000 / € 10,500–13,500



637



638

638
A diamond ring set with a marquise-cut diamond weighing app. 2.03 ct. flanked by two heart-shaped brilliant-cut diamonds weighing a total of app. 0.73 ct., mounted in 18k white gold. Colour: G-H. Clarity: VVS-SI. Size 54.
The center stone is accompanied by HRD copy of certificate and parcel paper no. 230000160979.
DKK 80,000–100,000 / € 10,500–13,500



639

639

A diamond ring set with an emerald-cut diamond weighing app. 1.20 ct. flanked by numerous brilliant-cut diamonds weighing a total of app. 0.35 ct., mounted in platinum. Colour: D-H. Clarity: VVS1-VS2. Size 46.

Accompanied by case, jewellery appraisal from Adiamor and GIA certificate no. 220142326. DKK 70,000–90,000 / € 9,400–12,000



640

640 *

A diamond ring set with numerous baguette- and brilliant-cut diamonds weighing a total of app. 3.35 ct., mounted in 18k white gold. Colour: H. Clarity: VS-SI. W. 8 mm. Size 56.

DKK 28,000–30,000 / € 3,750–4,000



641

641

A diamond bracelet set with numerous square-cut diamonds weighing a total of app. 12.27 ct., mounted in 18k white gold. Colour: E-F. Clarity: VVS. Weight app. 24.5 g. W. 4 mm. L. 18 cm.

Accompanied by receipt and original case.

DKK 140,000–180,000 / € 19,000–24,000

642 *

An opal ring set with a cabochon opal weighing app. 9.00 ct. encircled by numerous brilliant-cut diamonds weighing a total of app. 1.95 ct., circular-cut sapphires weighing a total of app. 1.95 ct. and tsavorites weighing a total of app. 1.70 ct., mounted in 18k rose gold. Weight 12.5 g. W. 25 mm. Size 53.

DKK 25,000–30,000 / € 3,350–4,000



642



643

643

An emerald and diamond ring set with a cushion-cut presumably Colombian emerald weighing app. 2.91 ct. flanked by numerous brilliant-cut diamonds weighing a total of app. 0.61 ct., mounted in 18k white gold. Colour: G. Clarity: VVS. Weight app. 10.5 g. W. 11 mm. Size 53.

Accompanied by receipt and case.

DKK 35,000–40,000 / € 4,700–5,350





644

644
A. HALBERSTADT
 A diamond ring set with numerous black brilliant-cut diamonds weighing a total of app. 2.24 ct. and numerous white brilliant-cut diamonds weighing app. 2.04 ct., mounted in 18k white gold. Colour: G. Clarity: VVS. W. 29 mm. Size app. 65. Circa 2010.
Retail price DKK 50,000,- in 2010.
Accompanied by original case and a copy of the receipt.
DKK 10,000–15,000 / € 1,350–2,000



647

647
 A diamond necklace set with numerous brilliant-cut diamonds weighing a total of app. 7.14 ct., mounted in 18k white gold. Colour: F. Clarity: VS-SI. L. 43 cm.
DKK 60,000–80,000 / € 8,050–10,500

645
 A diamond ring set with numerous brilliant-cut diamonds weighing a total of app. 3.55 ct., mounted in 14k white gold. Colour: H-I. Clarity: VS-SI. W. 4 mm. Size 61.
DKK 35,000–40,000 / € 4,700–5,350



645

648
 A pair of diamond ear studs each set with a brilliant-cut diamond weighing a total of app. 1.10 ct., mounted in 18k white gold. Colour: D. Clarity: VVS. W. 5 mm. (2)
Accompanied by HRD certificate no. 230000155830 and GIA certificate no. 6237113905.
DKK 35,000–40,000 / € 4,700–5,350

648



646

646
 A diamond ring set with numerous brilliant-cut diamonds weighing a total of 2.50 ct., mounted in 18k white gold. Colour: H. Clarity: VS. W. 5 mm. Size 55.
Accompanied by a case.
DKK 20,000–25,000 / € 2,700–3,350

649



649
 A pair of diamond ear studs each set with a brilliant-cut diamond weighing a total of app. 1.03 ct., mounted in 18k white gold. Colour: G. Clarity: VVS-VS. W. 5 mm. (2)
Accompanied by HRD certificate no. 230000127352 and 230000157379.
DKK 18,000–20,000 / € 2,400–2,700



650

An important Fancy Dark Grey diamond ring set with with a pear-shaped brilliant-cut natural Fancy Dark Grey diamond weighing 7.05 ct. encircled by an understated frame of numerous brilliant-cut diamonds weighing a total of app. 0.50 ct., mounted in 18k white gold. Size app. 53.5.

The center stone is accompanied by GIA certificate no. 1156344672.

The whole surface underneath the Grey diamond is pavé-set with numerous brilliant-cut diamonds.

Colour distribution: Even.

Colour origin: Natural.

Clarity: I1.

Polish: Very good.

Symmetry: Good.

Fluorescence: None.

DKK 425,000–475,000 / € 57,000–63,500



650



651

651

A diamond brooch in the shape of a twig with leaves set with numerous marquise, brilliant and baguette-cut diamonds weighing a total of app. 13.90 ct., mounted in platinum. Colour: F-G. Clarity: VS-SI. L. 6.3 cm.

DKK 225,000–250,000 / € 30,000–33,500

652

A diamond ring set with an emerald-cut diamond weighing 3.17. ct., mounted in 18k white gold. Colour: F. Clarity: VS1. Size 54.

Accompanied by HRD certificate no. 230000160975.

DKK 250,000–275,000 / € 33,500–37,000



652



653

653

A pair of diamond ear studs each set with a brilliant-cut diamond weighing a total of app. 7.00 ct., mounted in 18k white gold. Colour: L-M. Clarity: VVS-VS. (2)

DKK 240,000–260,000 / € 32,000–35,000



654
 A diamond pendant set with a briolette-cut diamond and numerous brilliant-cut diamonds weighing a total of app 4.06 ct., mounted in 18k rose gold. Colour: H-M. Clarity: VS-P. Accompanied by a necklace of 18k rose gold. Total weight app. 9 g. L. 42 cm. (2)
 DKK 25,000–30,000 / € 3,350–4,000

654



655
 A jewellery set comprising of a bracelet and a necklace of 18k tri-coloured gold. Weight in total app. 110 g. W. 18 mm. L. 17.8-41.5 cm. (2)
 Accompanied by case.
 DKK 50,000–55,000 / € 6,700–7,350

655



656
 An agate and diamond ring set with a briolette-cut agate encircled by numerous oval-cut agates and brilliant-cut diamonds, mounted in 18k rose gold. Weight app. 16.5 g. Front app. 3 x 2.5 cm. Size 58.
 DKK 12,000–15,000 / € 1,600–2,000

656

657
 A wide diamond ring set with numerous brilliant-cut diamonds weighing a total of app. 5.54 ct., mounted in 18k rose gold. Colour: I-J. Clarity: VVS. W. 7 mm. Size 59.
 DKK 30,000–35,000 / € 4,000–4,700



657



658
 An emerald and diamond ring set with numerous circular-cut emeralds weighing a total of app. 3.22 ct. and numerous brilliant-cut diamonds weighing a total of app. 1.01 ct., mounted in 18k gold. Colour: H. Clarity: VS-SI. Weight app. 19 g. W. 25 mm. Size 55.
 DKK 15,000–18,000 / € 2,000–2,400

658



659

A sapphire and diamond bracelet set with numerous pear-shaped, circular, oval, emerald and fancy-cut multi-coloured sapphires weighing a total of app. 36.84 ct. and numerous brilliant-cut diamonds weighing a total of app. 0.73 ct., mounted in 18k gold. Colour: F. Clarity: VS. Weight app. 42.5 g. W. 15 mm. L. app. 16.5 cm.

DKK 80,000–100,000 / € 10,500–13,500



659



660

660 *

A sapphire bracelet set with numerous multi-colour princess-cut sapphires, mounted in 18k rose gold. W. 4 mm. L. 18.5 cm.

DKK 25,000–30,000 / € 3,350–4,000



661

661 *

A pair of sapphire and diamond ear pendants each set with numerous faceted multi-colour sapphires weighing a total of app. 4.49 ct. and numerous brilliant- and single-cut diamonds weighing a total of app. 1.14 ct. mounted in silver and 14k white gold. Weight app. 16 g. W. 20 mm. L. 7.5 cm. (2)

DKK 10,000–15,000 / € 1,350–2,000



662

662

A sapphire bracelet in the shape of spirals and leaves set with numerous circular-cut white sapphires, mounted in 14k gold. Weight app. 43.5 g. W. 20 mm. L. app. 17.5 cm.

Hallmarks "H.W." are presumably Hans Wullum Copenhagen 1953–1973.

According to information the bracelet is an apprentice's final piece for exam.

Accompanied by case.

DKK 22,000–25,000 / € 2,950–3,350



663

663
A yellow sapphire and diamond ring set with an oval-cut yellow sapphire encircled by numerous brilliant-cut diamonds, mounted in 18k gold. Weight app. 9 g. W. 16 mm Size app. 61.5.
DKK 12,000–15,000 / € 1,600–2,000

664

A sapphire and diamond bangle set with a circular-cut yellow presumably un-heated sapphire weighing app. 11.02 ct. encircled by numerous single and brilliant-cut diamonds weighing a total of app. 0.71 ct., mounted in platinum and 14k white gold. Colour: H. Clarity: VS-SI. L. app. 19 cm.
DKK 25,000–30,000 / € 3,350–4,000



664



665

665
A diamond, amethyst and citrine brooch set with numerous old- and single-cut diamonds, faceted amethysts and cabochon and faceted citrines, mounted in platinum and 8k white gold. Weight app. 11 g. L. 4.6 cm.
DKK 18,000–20,000 / € 2,400–2,700



666

666
A diamond pendant set with three brilliant-cut diamonds respectively weighing app. 1.15 ct., 1.40 ct. and 1.78 ct., mounted in 18k gold. Colour: I-N. Clarity: VS1-VVS2. Accompanied by a necklace of 18k gold. Pendant L. 2.5 cm. L. 39.5 cm. (2)
DKK 100,000–120,000 / € 13,500–16,000



667

667
A pair of diamond ear pendants each set with an old mine-cut diamond weighing a total of app. 1.93 ct., mounted in 18k gold. Colour: I-J. Clarity: VS. L. 21 mm. (2)
DKK 40,000–45,000 / € 5,350–6,050



668

668
A diamond ring set with an old mine brilliant-cut diamond weighing 1.07 ct. encircled by numerous brilliant-cut diamonds weighing a total of app. 0.73 ct., mounted in 18k gold. Colour: H-J. Clarity: VVS-VS. Size 54.
The center stone is accompanied by GIA certificate no. 5221173191. DKK 40,000–45,000 / € 5,350–6,050

669 *

A diamond ring set with a marquise modified brilliant-cut diamond weighing 3.04 ct. flanked by two fancy yellow cushion-cut diamonds weighing a total of app. 0.50 ct., mounted in 18k rose gold. Size 54.

Accompanied by GIA certificate no. 7481105005.
DKK 100,000–120,000 / € 13,500–16,000



669



671

671 *

A diamond ring set with a Fancy Deep Brownish Orangi Yellow oval modified brilliant-cut diamond weighing app. 1.09 ct. encircled by numerous brilliant-cut diamonds weighing a total of app. 0.37 ct., mounted in 18k white gold. Size 54.

The center stone is accompanied by GIA certificate no. 7432267704. DKK 35,000–40,000 / € 4,700–5,350



670

670

A diamond ring set with a marquise-cut fancy brownish yellow diamond flanked by two trapeze and four brilliant-cut diamonds, mounted in 14k matted gold and white gold. W. 35 mm. Weight app. 21 g. Size app. 51.5.

DKK 15,000–20,000 / € 2,000–2,700



672

A pearl necklace set with numerous cultured Akoya pearls, a diamond globe clasp set with numerous brilliant-cut diamonds and a detachable emerald and diamond pendant set with a heart-shaped faceted emerald encircled by numerous diamonds, mounted in 18k gold and white gold. Globe clasp diam. 10 mm. Pendant incl. eye-let L. 27 mm. Pearl diam. 8 mm. L. 46.6. cm. (2)

Accompanied by a suede jewelry pouch.
DKK 25,000–30,000 / € 3,350–4,000

672

673 *

An emerald and diamond ring set with a heart-shaped emerald weighing app. 0.52 ct., a yellow pear-shaped diamond weighing app. 0.50 ct. and numerous marquise-cut diamonds weighing a total of app. 0.97 ct., mounted in 18k white gold. Size 56.

DKK 25,000–30,000 / € 3,350–4,000



673



674

674 *

A pair of pearl and diamond ear pendants each set with a cultured Tahiti pearl and three pear-shaped diamonds, a marquise-cut diamond and numerous brilliant-cut diamonds weighing a total of app. 1.41 ct., mounted in 18k white gold. Colour: H. Clarity: VS. Pearl diam. app. 14 mm. L. app. 3.5 cm. (2)

DKK 18,000–20,000 / € 2,400–2,700



677

677

A pair of emerald and diamond ear studs each set with an emerald-cut emerald weighing a total of app. 2.40 ct. encircled by numerous marquise-cut diamonds weighing a total of app. 1.30 ct., mounted in 14k white gold. Colour: H-I. Clarity: VS-SI. Total weight app. 8.5 g. Diam. 15 mm. (2)

DKK 25,000–30,000 / € 3,350–4,000

675

A diamond ring set with an oval brilliant-cut diamond weighing 0.72 ct. encircled by numerous brilliant-cut diamonds weighing a total of app. 0.53 ct., mounted in 18k white gold. Colour: D-F. Clarity: IF-VVS. Size: app. 53.5.

The center stone is accompanied by GIA certificate no. 1189701488. DKK 35,000–40,000 / € 4,700–5,350



675

678

A diamond bracelet set with numerous brilliant-cut diamonds weighing a total of app. 4.10 ct., mounted in 18k white gold. Colour: D. Clarity: VVS. L. 17.3 cm. DKK 50,000–60,000 / € 6,700–8,050



678



676

676

A pair of solitaire diamond ear studs each set with a brilliant-cut diamond weighing a total of app. 2.00 ct., mounted in 18k white gold. Colour: I Clarity: VS2. Diam. app. 6 mm. (2)

Accompanied by IGI certificate no. F1P64951 and F1P64946. DKK 75,000–80,000 / € 10,000–10,500



679

679

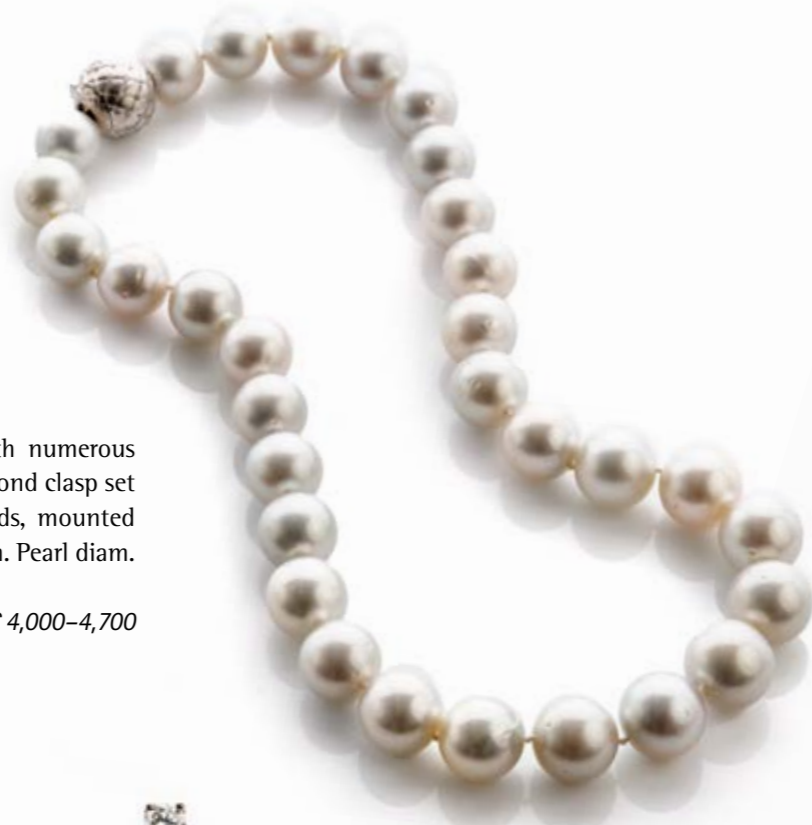
A diamond bracelet set with numerous brilliant-cut diamonds weighing a total of app. 6.67 ct., mounted in 18k white gold. Colour: F. Clarity: VS2. L. 18 cm. DKK 80,000–100,000 / € 10,500–13,500



680

680
A pair of diamond ear pendants each set with numerous brilliant-cut diamonds weighing a total of app. 2.60 ct., mounted in 14k white gold. Colour: H-I. Clarity: VS. Total weight app. 17.5 g. Diam. 3.5 cm. L. 4 cm. (2)

DKK 25,000–30,000 / € 3,350–4,000



681

681
A South Sea pearl necklace set with numerous cultured South Sea pearls and a diamond clasp set with numerous brilliant-cut diamonds, mounted in 18k white gold. Clasp diam. 14 mm. Pearl diam. app. 14 mm. L. 49.5 cm.

DKK 30,000–35,000 / € 4,000–4,700



682

682
A pair of pearl and diamond ear studs each set with a cultured South Sea pearl flanked by three brilliant-cut diamonds, mounted in 18k white gold. Pearl diam. app. 14 mm. L. 23 mm. (2)

DKK 18,000–20,000 / € 2,400–2,700



683

683
A turquoise and pearl necklace set with numerous cabochon turquoises and cultured pearls, mounted in silver and gilded silver. W. 4 cm. L. 42.5 cm.

Accompanied by certificate no. 5783-4099 from Gemmological Certification Services, London. DKK 25,000 / € 3,350



684

684
 A three strand pearl necklace set with numerous cultured Akoya pearls and a sapphire and diamond clasp set with a large cabochon sapphire encircled by four old-cut diamonds weighing a total of app. 0.30 ct., mounted in 14k gold. Sapphire app. 24.5 x 27 x 13.9 mm. Pearl diam. app. 5-9 mm. L. 35.5 cm.
The sapphire exhibits some asterism at one side. This is caused by numerous minute needle-like inclusions of the mineral rutile. The needles are arranged in three directions, which causes a six-ray star.
Accompanied by case and insurance valuation from Langaard of NOK 275.000,-
DKK 125,000-150,000 / € 17,000-20,000

685

A diamond ring set with an emerald-cut diamond weighing app. 1.30 ct. flanked by numerous baguette-cut diamonds weighing a total of app. 0.60 ct., mounted in 18k gold. Colour: H. VS1-VS2. Size 50.
DKK 25,000-30,000 / € 3,350-4,000



685

686

A versatile diamond brooch in the shape of a heart set with numerous brilliant-cut diamonds weighing a total of app. 7.38 ct., mounted in 18k gold. Colour: H. Clarity: VS. Weight app. 20 g. Measurements heart app. 3.1 x 3.2 cm. Length in total 4.1 cm.
The brooch is fitted with an eye-let which can be folded down and thus hidden integrated on the back.
The eye-let is openable and can be used on a pearl necklace.
DKK 30,000 / € 4,000



686



687

687
 A diamond necklace set with numerous baguette-cut diamonds weighing a total of app. 2.10 ct., mounted in 18k gold. Colour: H. Clarity: VS-SI. Weight app. 40 g. W. 8-12 mm. L. 43 cm.
DKK 20,000-25,000 / € 2,700-3,350



688

688
 A diamond bracelet set with numerous brilliant- and baguette-cut diamonds weighing a total of app. 1.95 ct., mounted in 18k gold. Colour: H. Clarity: VS-SI. W. 9 mm. L. 19.5 cm.
Accompanied by case.
DKK 20,000-25,000 / € 2,700-3,350



689

689

BUCHERER

A diamond necklace set with a brilliant-cut diamond weighing app. 0.40 ct., mounted in 18k gold. Colour: G. Clarity: VS. Weight app. 36 g. W. 5-8 mm. L. 42 cm.
Accompanied by original case.
DKK 15,000 / € 2,000

DKK 15,000 / € 2,000



690

690
An emerald and diamond ring set with a brilliant-cut diamond weighing app. 3.00 ct. flanked by seven pear-shaped emeralds weighing a total of app. 1.00 ct., mounted in 18k gold. Colour: M. Clarity: VS. Size 56.
DKK 90,000–100,000 / € 12,000–13,500

691
A diamond ring set with three brilliant-cut diamonds weighing a total of app. 1.35 ct., mounted in 18k gold. Colour: I–J. Clarity: VS–SI. Weight app. 7 g. W. 8 mm. Size. 55.5.
DKK 20,000–25,000 / € 2,700–3,350



691



692

692
A diamond ring set with a brilliant-cut diamond weighing 3.10 ct. flanked by eight brilliant-cut diamonds weighing a total of app. 0.22 ct., mounted in 18k gold. Colour: H–L. Clarity: VVS. Size. 54.
The center stone is accompanied by GIA certificate no. 230000159566.
DKK 180,000–200,000 / € 24,000–27,000

693
A diamond ring set with an old mine-cut diamond weighing app. 2.00 ct. flanked by numerous old-cut diamonds weighing a total of app. 0.12 ct., mounted in 18k gold. Colour: H–O. Clarity: VS–SI. Size 54.5.
DKK 60,000–70,000 / € 8,050–9,400



693



694

694
A pair of diamond ear pendants each set with numerous brilliant-cut diamonds weighing a total of app. 2.82 ct., mounted in 18k gold. Colour: F. Clarity: VS–SI. W. 19 mm. L. app. 3.2 cm. (4)
DKK 30,000–35,000 / € 4,000–4,700



695

695
A diamond bracelet set with numerous brilliant-cut diamonds weighing a total of app. 12.89 ct., mounted in 18k gold. Colour: K. Clarity: VS. L. 17.8 cm. DKK 90,000–100,000 / € 12,000–13,500



696

696
A diamond necklace set with numerous brilliant-cut diamonds weighing a total of app. 10.00 ct., mounted in 18k gold. Colour: Light pink–yellow. Clarity: SI–P1. Weight app. 11.5 g. L. 42.5 cm. DKK 40,000–50,000 / € 5,350–6,700



697

A graduated Art Nouveau diamond necklace set with numerous rose-cut and old-cut diamonds weighing a total of app. 18.00 ct., mounted in 16k gold and oxidised silver. L. app. 41.3 cm. Circa 1890-1910. Accompanied by case.

DKK 175,000-200,000 / € 23,500-27,000

697



698

698

A diamond ring set with numerous brilliant-cut diamonds weighing a total of app. 2.20 ct., mounted in 18k gold and silver. Colour: H-J. Clarity: VS-SI. Weight app. 11.5 g. Diam. 28 mm. Size 57.

DKK 12,000-15,000 / € 1,600-2,000



699

699

An antique bangle set with a cabochon emerald encircled by numerous circular-cut emeralds and numerous rose-cut diamonds, mounted in 10-14k gold. Weight app. 55 g. Front W. 4 cm. Inside diam. 6.6 cm.

DKK 25,000-30,000 / € 3,350-4,000

700

A pair of Art Deco style emerald and diamond ear pendants each set with an emerald-cut emerald weighing a total of app. 1.78 ct. encircled by numerous baguette and brilliant-cut diamonds weighing a total of app. 2.27 ct., mounted in 14k gold and white gold. W. 19 mm. L. 4.7 cm. (2)

Accompanied by case and appraisal from GLA in 2019. DKK 15,000-20,000 / € 2,000-2,700



700



701

701

An emerald and diamond ring set with a rectangular cushion-cut Colombian emerald weighing app. 2.11 ct., encircled by numerous cultured pearls, mounted in 18k gold. Weight app. 4 g. W. 13 mm. Pearl diam. app. 2.8 mm. Size 52.5.

Accompanied by certificate no. 13827 from The Gem & Pearl Laboratory. DKK 18,000-20,000 / € 2,400-2,700

702

A Russian diamond and emerald brooch in the form of the Imperial Russian double-headed eagle, mitro crowned with ribbons and outstretched wings, claws holding scepters and orb, richly set with rose-cut, old mine-cut and brilliant-cut diamonds, eyes in the shape of resp. a faceted emerald and tsarovite, center with an emerald-cut emerald, mounted in silver and gold. Top with an eyelet. Apparently unmarked. Front 19th century, reverse first half of the 20th century. Weight app. 37.5 g. H. 6.9 cm.

The brooch can make references to the pendant of the chain of the Order of St. Andrew. This pendant was an eagle and in some cases set with diamonds.

DKK 20,000-30,000 / € 2,700-4,000



702



703

703

An emerald and diamond ring set with an octagon-cut emerald encircled by numerous brilliant-cut diamonds weighing a total of app. 1.45 ct., mounted in 18k white gold. Colour: H. Clarity: VS. Size 55.

DKK 25,000–30,000 / € 3,350–4,000

704

An emerald and diamond ring set with a fancy-cut emerald flanked by six brilliant-cut diamonds, mounted in 14k white gold. Weight app. 4. g. W. 10 mm. Size 52.5.

DKK 18,000–20,000 / € 2,400–2,700



704



705

705

An emerald and diamond ring set with a rose-cut Colombian emerald weighing app. 1.90 ct. flanked by two rose-cut diamonds, mounted in 18k gold and white gold. W. 9 mm. Size 56.

Accompanied by 'Gemmological Certifications Services' certificate no. 5783-4060.

DKK 20,000–25,000 / € 2,700–3,350

706 *

A pair of pearl and diamond ear pendants each set with a cultured Tahiti pearl and numerous brilliant-cut diamonds weighing a total of app. 1.20 ct., mounted in 18k white gold. Pearl diam. app. 12 mm. L. 3 cm. (2)

DKK 25,000–30,000 / € 3,350–4,000



706

707



707

A pair of diamond ear studs each set with a brilliant-cut diamond weighing a total of app. 1.01 ct., mounted in 18k white gold. Colour: F-G. Clarity: VS. W. 5 mm. (2)

Accompanied by HRD certificate no. 230000148930 and 230000148931. DKK 20,000–25,000 / € 2,700–3,350



708

708

An Art Deco diamond brooch set with three marquise-cut diamonds and numerous old- and single-cut diamonds weighing a total of app. 3.50 ct., mounted in platinum. Colour: H-I. Clarity: VS-SI. Weight app. 16.5 g. L. 4.5 cm.

DKK 20,000–25,000 / € 2,700–3,350

709

A diamond bangle set with numerous old-cut and one old european-cut diamond weighing a total of app. 4.61 ct., mounted in 14k white gold. Colour: H-K. Clarity: SI-P2. Weight app. 21 g. W. 5-13 mm. Inside diam. 5.7 cm. L. 19 cm.

DKK 60,000–70,000 / € 8,050–9,400



709



710

710
A lapis necklace set with numerous polished lapis lazuli beads and a clasp of 18k gold. Pearl diam. app. 17 mm. L. 45 cm.
DKK 10,000–15,000 / € 1,350–2,000



711

711
A tanzanite and diamond ring set with an emerald-cut tanzanite encircled by numerous brilliant-cut diamonds, mounted in 18k white gold. W. 12 mm. Size 55.
DKK 12,000–15,000 / € 1,600–2,000



712

712
A pair of diamond ear studs each set with four brilliant-cut diamonds weighing a total of app. 2.01 ct., mounted in 18k white gold. Colour: L-P. Clarity: VVS-SI. W. app. 11 mm. (2)
DKK 18,000–20,000 / € 2,400–2,700



713

713
An aquamarine and diamond ring set with an emerald-cut aquamarine weighing app 5.50 ct. flanked by numerous square- and baguette-cut diamonds weighing a total of app. 0.40 ct., mounted in 18k gold. Weight app. 9 g. W. 10 mm. Size 53. DKK 12,000–15,000 / € 1,600–2,000



714

714
An aquamarine and diamond necklace set with two oval-cut aquamarines and numerous brilliant-cut diamonds, mounted in 18k white gold. Aquamarine pendant W. 2.4 cm. L. 5.5 cm. L. 42.5 cm.
DKK 25,000–30,000 / € 3,350–4,000



715

715
An aquamarine and diamond bracelet set with five emerald-cut aquamarines and numerous single-cut diamonds, mounted in 14k white gold. Measurements aquamarines 12.69 x 17.64 mm. W. 13 mm. L. 17.2 cm. DKK 12,000–15,000 / € 1,600–2,000



716

716
An aquamarine and diamond ring set with an emerald-cut aquamarine weighing app. 2.60 ct. and numerous brilliant-cut diamonds weighing a total of app. 0.63 ct., mounted in 18k white gold. W. 13 mm. Size 54. DKK 15,000–18,000 / € 2,000–2,400





717
A ruby and diamond necklace set with numerous carré-cut presumably un-heated Burma rubies and numerous old mine-cut diamonds, mounted in 18k gold. Weight app. 4.5 g. Pendant L. 3.5 cm. L. 46 cm. Accompanied by 'Gemmological Certification Services' certificate no. 5783-3809.

DKK 18,000–20,000 / € 2,400–2,700

717



718

718
A pair of ruby and diamond ear pendants each set with two emerald-cut un-heated rubies and a brilliant-cut diamond, mounted in 18k rose gold. W. 5 mm. L. 17 mm. (2) DKK 25,000–30,000 / € 3,350–4,000



719

719
A graduated ruby necklace set with numerous polished un-heated ruby beads weighing a total of app. 409 ct. Bead diam. 6-9 mm. L. app. 53 cm. Accompanied by 'Gemmological Certifications Services' certificate no. 5782-1527.

DKK 25,000–30,000 / € 3,350–4,000



720

720 *
A pair of malachite, mother of pearl, diamond and sapphire ear pendants each set with polished malachite, mother of pearl, a synthetic cabochon sapphire and numerous brilliant-cut diamonds, mounted in 18k rose gold. Weight app. 32 g. W. 3 cm. L. app. 3 cm. (2)

DKK 35,000–40,000 / € 4,700–5,350



721

721
A ruby and diamond brooch set with numerous cabochon Burma rubies weighing a total of app. 3.30 ct. flanked by numerous old mine-cut diamonds, mounted in 14k tri-coloured gold. Weight app. 27.5 g. W. 1.8-5.2 cm. L. 5.4 cm. Accompanied by 'Gemmological Certifications Services' certificate no. 79209-00.

DKK 40,000–45,000 / € 5,350–6,050



722

722
A graduated necklace of 18k partly patterned gold. Weight app. 59 g. W. 10-25 mm. L. 43 cm. DKK 30,000 / € 4,000

723

A ruby and diamond clip/brooch set with numerous circular-cut Burma rubies weighing a total of app. 3.19 ct. and numerous old-cut diamonds weighing a total of app. 2.42 ct. Weight app. 12.5 g. W. 3.5 cm. L. app. 4 cm.

Accompanied by certificate No. 5783-3700 from Gemmological Certification Services, London.

DKK 18,000-20,000 / € 2,400-2,700



723

726

A ruby and diamond ring set with a fancy-cut ruby weighing app. 3.93 ct. encircled by numerous brilliant-cut diamonds weighing a total of app. 0.80 ct., mounted in 18k white gold. Size 55.

According to certificate the ruby shows no indication of thermal treatment.

Accompanied by 'Istituto Gemmologico Nazionale' certificate no. 33070.

DKK 30,000-35,000 / € 4,000-4,700



726



724

724

A pair of ruby and diamond ear clips each set with an oval-cut ruby weighing a total of app. 1.97 ct. encircled by numerous brilliant-cut diamonds weighing a total of app. 1.33 ct., mounted in 18k gold. W. 12 mm. L. 20 mm. (2)

Accompanied by case and insurance valuation from Hartmann's in 2002.

Estimated insurance valuation: DKK 95,400,-

DKK 20,000-25,000 / € 2,700-3,350

725

A pearl necklace set with numerous cultured pearls adorned with a ruby and diamond clasp set with an oval-cut presumably unheated Burma ruby encircled by numerous brilliant-cut diamonds, mounted in 14k white gold. Clasp diam. 20 mm. Pearl diam. app. 7-8 mm. L. 70 cm.

The clasp is originally made for four pearl strands and can be re-strung as such.

DKK 40,000-60,000 / € 5,350-8,050



725



727

727

A ruby and diamond bracelet set with numerous baguette-cut rubies weighing a total of app. 9.54 ct. and brilliant-cut diamonds weighing a total of app. 5.00 ct., mounted in 14k white gold. Colour: H. Clarity: VS-SI. Weight app. 26 g. W. 10-15 mm. L. 18 cm.

DKK 50,000-60,000 / € 6,700-8,050



728

728

A pair of ruby and diamond ear pendants each set with four oval-cut rubies and numerous brilliant-cut diamonds with a pair of detachable ruby and diamond pendants each set with seven oval-cut rubies and numerous brilliant-cut diamonds, mounted in white gold. L. 6 cm. (4)

The ear pendants are fitted with a safety hook, to be attached above and behind the ear.

DKK 20,000-25,000 / € 2,700-3,350





729
A diamond ring set with three old-cut diamonds respectively weighing app. 1.92 ct., 0.52 ct. and 0.25 ct., mounted in 14k white gold. Colour: H-K. Clarity: VS-P1 Weight app. 7 g. W. 5-9 mm. Size 55.
DKK 35,000-40,000 / € 4,700-5,350



729



730

730
A diamond ring set with numerous brilliant-cut diamonds weighing a total of app. 0.70 ct., mounted in 18k gold and white gold. Colour: H. Clarity: VS-SI. Weight app. 21 g. W. 23 mm. Size 53. DKK 15,000-18,000 / € 2,000-2,400



731

A pearl and diamond ring set with a baroque cultured Tahiti and a cultured South Sea pearl flanked by numerous brilliant-cut diamonds weighing a total of app. 1.00 ct., mounted in 18k gold and white gold. Pearl diam. app. 12-14 mm. W. app. 33 mm. Size app. 51.

DKK 35,000-40,000 / € 4,700-5,350



731

732

A ruby and sapphire bracelet with a clasp in the shape of a flower set with numerous circular-cut rubies and sapphires, mounted in 18k satinated gold. Weight app. 47 g. W. 11-23 mm. L. 20 cm. Accompanied by case and jewellery description.

DKK 25,000 / € 3,350



732

733

A pair of pearl and diamond ear pendants each set with a cultured South Sea pearl and numerous brilliant-cut diamonds weighing a total of app. 2.20 ct., mounted in 13k gold and white gold. Pearl 12 x 13 mm. L. 4.5 cm. (4)

Pearl pendants are detachable.

DKK 25,000-30,000 / € 3,350-4,000



733



734

A South Sea pearl necklace set with numerous cultured South Sea pearls and a ball clasp of 14k gold and white gold. Clasp W. 11 mm. Pearl diam. 10-14.6 mm. L. 45.5 cm.

The pearls change in colour from white, over yellow and to golden.

Accompanied by case and insurance valuation from Hartmann's.

Estimated insurance value DKK 105,000,-

DKK 20,000-25,000 / € 2,700-3,350



734





735
 A diamond necklace with two lion heads set with numerous brilliant-cut diamonds, mounted in 18k partly rhodium-plated gold. Weight app. 58 g. Pendant W. 9.5 cm L. 41.5 cm.
DKK 30,000–35,000 / € 4,000–4,700



735



736

736
 A pair of diamond ear pendants each set with numerous brilliant-cut diamonds, weighing a total of app. 1.30 ct., mounted in 14k gold and white gold. Colour: H. Clarity: SI-P. Total weight app. 23 g. Diam. 28 mm. (2)
DKK 20,000–25,000 / € 2,700–3,350



737
 A long pearl necklace set with numerous cultured pearls, gold beads, gold spacers and a globe clasp of 18k gold. Pearl diam. app. 8 mm. L. 112 cm.
DKK 20,000–25,000 / € 2,700–3,350

737

738
BROCANI
 A diamond ring set with two brilliant- and two princess-cut diamonds weighing a total of app. 0.50 ct., two pear-shaped, an oval-cut and two princess-cut sapphires, two oval-cut rubies, a pear-shaped and five circular-cut emeralds, mounted in porcelain and 16k gold. W. 20 mm. Size 57. *DKK 10,000–12,000 / € 1,350–1,600*



738



739

739
 A jewellery set comprising a bracelet and a necklace, mounted in 18k sated gold and white gold. Total weight app. 106 g. W. 9 mm. L. 19 and 42 cm. (2)
DKK 40,000–45,000 / € 5,350–6,050



740

740

A sapphire and diamond bracelet set with numerous baguette- and fancy-cut sapphires and numerous marquise-, old-, single- and old square-cut diamonds weighing a total of app. 6.00 ct., mounted in platinum. Colour: H. Clarity: VS-SI. Weight 36.5 g. W. 12 mm. L. 18 cm.

DKK 100,000–125,000 / € 13,500–17,000

741

A sapphire and diamond brooch set with a tall cabochon sapphire flanked by twelve old mine-cut and twelve rose-cut diamonds weighing a total of app. 4.62 ct., mounted in platinum and 14k white gold. Farve: H-J. Clarity: VS. Weight app. 7 g. W. 11 mm. L. 4.6 cm.

DKK 25,000–30,000 / € 3,350–4,000



742

742

A Belle Époque diamond brooch set with two old-cut diamonds and a blue glass stone, mounted in 14k gold and platinum. Colour: K-L. Clarity: SI. L. app. 5 cm. Circa 1900.

Accompanied by a case.

DKK 18,000–20,000 / € 2,400–2,700



743

743

An enamel bracelet set with a checkered pattern of white and dark blue opaque enamel, mounted in 18k gold. W. app. 14 mm. L. 19 cm.

DKK 40,000–45,000 / € 5,350–6,050



744

744

A pair of sapphire and diamond ear studs each set with an oval-cut unheated sapphire weighing a total of app. 1.36 ct. encircled by numerous brilliant-cut diamonds weighing a total of app. 0.64 ct, mounted in 18k white gold. Colour: F. Clarity: VS. L. 11 mm. (2)

Accompanied by IGL certificate no. 39601-1.

DKK 15,000–20,000 / € 2,000–2,700



745

745

A sapphire and diamond ring set with a circular-cut sapphire weighing app. 1.02 ct. encircled by numerous brilliant-cut diamonds weighing a total of app. 1.40 ct., mounted in platinum. W. 15 mm. Size 54.5.

DKK 25,000–30,000 / € 3,350–4,000



746

746

A diamond ring set with a pear-shaped brilliant-cut diamond weighing app. 2.01 ct. flanked by two pear-shaped brilliant-cut diamonds weighing a total of app. 0.46 ct., mounted in 18k white gold. Colour: H-K. Clarity: VS-SI. Size 53.

DKK 60,000–80,000 / € 8,050–10,500



747

747

A multi stranded diamond bracelet with a clasp in the shape of a buckle set with numerous brilliant-cut diamonds, mounted in 18k white gold. Weight app. 49 g. W. 10-18 mm. L. 19.5-20.5 cm.

DKK 20,000–25,000 / € 2,700–3,350

748

An Art Deco diamond brooch set with an old-cut diamond weighing app. 1.18 ct. flanked by two modified square-cut diamonds and encircled by numerous old and single-cut diamonds weighing a total of app. 1.60 ct., mounted in platinum and 14k white gold. Colour: H-J. Clarity: VS-P. L. 5 cm.

DKK 12,000–15,000 / € 1,600–2,000



748



749

A diamond ring set with a triangle-cut diamond encircled by numerous brilliant-cut diamonds weighing a total of app. 1.56 ct., mounted in 18k white gold. Colour: H-J. Clarity: VS-SI. Weight app. 11 g. W. 12 mm. Size 54.5.

DKK 18,000–20,000 / € 2,400–2,700



749

750

A diamond ring set with seven brilliant-cut diamonds weighing a total of app. 1.44 ct., mounted in 14k gold and white gold. Colour: H. Clarity: VS-SI. Weight app. 15 g. W. 10-26 mm. Size app. 51.

DKK 28,000–30,000 / € 3,750–4,000



750

751

A three strand pearl necklace set with numerous cultured pearls adorned with an opal and diamond clasp set with a polished cabochon opal encircled by numerous brilliant-cut diamonds, mounted in 18k white gold. Clasp diam. 18 mm. Pearl diam. app. 8-9 mm. L. 50.5 cm.

DKK 20,000-25,000 / € 2,700-3,350



751



754

754

A pair of turquoise and diamond ear clips each set with two cabochon turquoises encircled by numerous rose-cut diamonds, mounted in 18k gold. W. 16-18 mm. L. 4.4 cm. (2)

DKK 25,000 / € 3,350



752

752

A pair of heliodor and diamond ear pendants each set with a cushion-cut heliodor weighing a total of app. 20.40 ct. encircled by numerous old-cut diamonds, mounted in 18k white gold. W. 12-18 mm. L. 25 mm. (2)

Accompanied by 'Gemmological Certificate Services' certificate no. 5782-2740.

DKK 50,000-55,000 / € 6,700-7,350



753

753

A topaz and pearl brooch set with a fancy-cut topaz encircled by cultured pearls, mounted in 21k gold. Weight app. 6 g. W. 2 cm. L. 3.5 cm.

Accompanied by certificate no. 81298-75 from Gemmological Certification Services, London.

DKK 25,000 / € 3,350



755

755

A brooch depicting a dog in a landscape set with numerous polished turquoises, carré-cut rubies and numerous old, single and brilliant-cut diamonds, mounted in 18k gold and white gold. L. app. 5.1 cm. DKK 35,000-40,000 / € 4,700-5,350





756

756
A Historicism and Old Norse style gold jewellery set, comprising of a shield-shaped brooch and a convex-shaped bangle each set with stylized Viking style filigree, mounted in 14k gold. Maker Fredrik Knoblich, Copenhagen 1833-1879. Diam. brooch app. 4.5 cm. Inner diam. bangle app. 4.5 x 5.8 cm. Weight in total app. 50.5 g. (2)
The ornamental filigree is of 15 to 18k gold.
The design is inspired by the so-called Terslev buckles, which date from around year 1000 and were found in Southern Zealand.
Accompanied by an original customized leather case.

DKK 15,000-18,000 / € 2,000-2,400



757

757
A turquoise and diamond bangle in the shape of a horse shoe set with six cabochon turquoises and four rose-cut diamonds, mounted in 21.6k gold. Weight app. 13.5 g. Front W. 25 mm. Inside diam. app. 5.9 cm.
The design is very elegant made with stirrups as an integrated clasp.
Accompanied by case.

DKK 10,000-12,000 / € 1,350-1,600



758

758
A royal presentation gold and diamond evening party bag parure, composed by 18k yellowish, greenish and reddish gold, comprising a reticule with sugarloaf cabochon sapphire lock, a portmonné, an openable powder box with mirror and brush, and a scent bottle, respectively knitted, profile-curved and fluted design, all pieces adorned with a royal Egyptian monogram HF set with several rose-cut diamonds. In original box from J. Lattes, Genève and Cairo. Mid-20th century. Weight in total (including contents in powder box and scent bottle) 338 g. H. reticule 12.5 cm. Diam. powder box 3.5 cm. (4)
Provenance: A present from a member of the royal Egyptian family in the early 1950s to the Danish owner's great-grandmother. She was part of the circle around the Egyptian king and his family as well as J. Lattes, who also made Egyptian medals. Thence by descent until today.

DKK 120,000-150,000 / € 16,000-20,000



759
A coral and diamond necklace set with a cabochon coral and numerous brilliant-cut diamonds, mounted in 18k gold. Weight app. 14 g. Coral pendant app. 18 x 24 mm. L. 43.5 cm. *DKK 18,000–20,000 / € 2,400–2,700*



759



760

760
A coral, diamond and onyx ring set with a cabochon coral encircled by numerous old-cut diamonds and carved onyx, mounted in 14k gold. Weight app. 16.5 g. Front 2.6 x 3.6 cm. Size 57. *DKK 15,000–18,000 / € 2,000–2,400*



761

761 *
A pearl, coral and onyx pendant set with numerous cultured pearls, polished coral and onyx and brilliant-cut diamonds, mounted in 18k white gold. Accompanied by a diamond and pearl necklace set with numerous cultured pearls and brilliant-cut diamonds, mounted in 18k white gold. Pendant L. 9.5 cm. Necklace L. 90 cm. (2)
Pendant is detachable.
DKK 18,000–20,000 / € 2,400–2,700

762
An Art Deco diamond bracelet set with numerous old-cut and single-cut diamonds weighing a total of app. 4.23 ct., mounted in platinum. Colour: H-I. Clarity: VS-P. Weight app. 42 g. W. 19 mm. L. 18.5 cm. *DKK 50,000–60,000 / € 6,700–8,050*



762



763

763
An Art Deco style bracelet set with numerous old and single-cut diamonds weighing a total of app. 1.60 ct. and links set with black enamel, mounted in 18k white gold. W. app. 9 mm. L. 18 cm. *DKK 38,000–40,000 / € 5,100–5,350*



WRISTWATCHES

Wednesday 12 June 7 pm

Lot 765 - 826



764

764

An enamel, sapphire and diamond brooch set with enamel, a cabochon sapphire and numerous brilliant-cut diamonds weighing a total of app. 2.70 ct., mounted in golden metal. Colour: H. Clarity: VS-SI. Weight app. 36.5 g. W. 4.5 cm. L. 11.5 cm. 1970.

DKK 30,000-40,000 / € 4,000-5,350





765

765
ROLEX
Model: Datejust 41
Reference: 126331
Movement: Automatic, cal. 3235
Material: 18k Everose gold and steel
Diameter: 41 mm
Bracelet: "Jubilee" bracelet of 18k Everose gold and steel
Circumference: App. 19.5 cm
Year: 2010s

Case no. 126331
Caseback no. 2480
Movement no. 6564W230
Endlink no. 62611
Serial no. 6289Z5A1

This lot is being sold by the request of a lawyer, an insurance company or a public authority.
DKK 60,000–80,000 / € 8,050–10,500



767

767
OMEGA
Model: Constellation
Reference: 13125292055001
Movement: Automatic, cal. 8700
Material: 18k gold and steel
Diameter: 28 mm
Bracelet: Integrated bracelet of 18k gold and steel
Circumference: app. 15.5 cm
Year: 2022

Dial set with numerous single-cut diamonds. Bezel set with numerous brilliant-cut diamonds.

Accompanied by Omega box, manual, diamond certificate, pictogram card, chronometer certificate and certificate 2022.

DKK 25,000–30,000 / € 3,350–4,000



766

766
ROLEX
Model: Submariner
Reference: 116613LN
Movement: Automatic, cal. 3135
Material: 18k gold and steel
Diameter: 40 mm
Bracelet: "Oyster" bracelet of 18k gold and steel
Circumference: app. 18 cm
Year: 2010s

Caseback no. 2360
Serial no. 9665W4T8
Movement no. 60R40459
Endlink no. 97203

This lot is being sold by the request of a lawyer, an insurance company or a public authority.
DKK 40,000–60,000 / € 5,350–8,050



768

768
ROLEX
Model: Datejust 36
Reference: 116203
Movement: Automatic, cal. 3135
Material: 18k gold and steel
Diameter: 36 mm
Bracelet: "Oyster" bracelet of 18k gold and steel
Circumference: app. 16.5 cm
Year: 2005–06

Case no. 116203
Caseback no. 2080
Movement no. 104270
Serial no. D655558
Endlink no. 72203

Accompanied by Rolex box, service pouch, manual and photocopy of certificate.

DKK 40,000–50,000 / € 5,350–6,700



769
OMEGA
 Model: Speedmaster
 Reference: 31030425001002
 Movement: Manual chronograph, cal. 3861
 Material: Steel
 Diameter: 42 mm
 Bracelet: Omega bracelet of steel
 Circumference: app. 17 cm
 Year: 2021

Accompanied by Omega box, manual, five additional links (approx. 2.9 cm), brochure, chronometer certificate, pictogram card and certificate from 2021.
 DKK 30,000 / € 4,000



769



OMEGA
 JAMES BOND 007
 LIMITED EDITION

771
OMEGA
 Model: Seamaster Aqua Terra "007"
 Reference: 23110422103004
 Movement: Automatic, cal. 8507
 Material: Steel
 Diameter: 41 mm
 Strap: Omega fabric strap
 Buckle: Omega folding clasp of steel
 Year: 2015

Accompanied by Omega box, loupe, springbar tool, polishing cloth, pictogram card and certificate from 2015. The watch bears no. 11623/15007.
 DKK 30,000–40,000 / € 4,000–5,350



770

770
OMEGA
 Model: Speedmaster
 Reference: 145.012-67SP
 Movement: Manual chronograph, cal. 321
 Material: Steel
 Diameter: 42 mm
 Strap: Omega leather strap
 Buckle: Omega buckle of steel
 Year: 1960s

Accompanied by Omega bracelet of steel with end-links. Bracelet no. 1035. Endlink no. 530.

Originally bought by a chief pilot from the Israeli army, 1966. According to the seller, the watch comes directly from the pilot's descendants.

Please note that the movement no. begin with 18xxx. Hence, the movement is from 1961 and is earlier than the rest of the watch. It is most likely a later addition to the watch. DKK 30,000–40,000 / € 4,000–5,350



771



772

772
CARTIER
 Model: Tank Américaine
 Reference: 1734B
 Movement: Manual, cal. 430
 Material: Platinum
 Diameter: 26.5 x 37 mm
 Strap: Cartier alligator strap
 Clasp: Cartier folding clasp of 18k white gold
 Year: 1997

Accompanied by Cartier wooden box, loupe, service receipt from Cartier 2022 and certificate from 1997.

The history of the Cartier Tank traces back to the early 20th century when Louis Cartier, inspired by the design of the Renault tanks during World War I, created the iconic Tank watch in 1917. The Tank Américaine was introduced later in 1989, featuring a longer elongated case than its predecessor. Its distinctive silhouette captured the spirit of Art Deco, a design movement characterized by geometric shapes and streamlined forms.

The Cartier Tank Américaine in platinum is the pinnacle of luxury wristwatches, embodying the refinement and elegance that resonates with the Cartier brand. Its sleek, rectangular case with softened edges pays homage to the original Tank design while incorporating modern sophistication.

This lot is subject to CITES export/import restrictions and can only be shipped to addresses within the EU or collected from one of our departments. Please contact the department for further details.

DKK 120,000–150,000 / € 16,000–20,000



773

773
CARTIER
 Model: Ronde Croisière de Cartier
 Reference: WSRN0035
 Movement: Automatic, cal. 1847 MC
 Material: Steel
 Diameter: 40 mm
 Bracelet: Cartier bracelet of steel
 Circumference: app. 19 cm
 Year: 2022

Accompanied by Cartier box, manual and certificate from 2022. DKK 25,000–30,000 / € 3,350–4,000



774

774
ROLEX
 Model: GMT-Master II
 Reference: 16710
 Movement: Automatic, cal. 3185
 Material: Steel
 Diameter: 40 mm
 Bracelet: "Oyster" bracelet of steel
 Circumference: app. 18.5 cm
 Year: 1991

*Case no. 16710
 Caseback no. 16710
 Serial no. X679117
 Movement no. 647380
 Endlink no. 501B
 Bracelet no. 78360
 Folding clasp no. 93250*

DKK 50,000–60,000 / € 6,700–8,050



775

775
PATEK PHILIPPE
Reference: 3293/14
Movement: Manual, cal. 13.5-230
Material: 18k white gold
Diameter: 16 x 16 mm
Bracelet: Integrated bracelet of 18k white gold
Circumference: App. 16.5 cm
Year: 1960s

The bezel is set with numerous single-cut diamonds.

*Accompanied by Patek Philippe box.
DKK 25,000–30,000 / € 3,350–4,000*



777

777
VACHERON CONSTANTIN
Reference: 18702/201
Movement: Manual, cal. 1430
Material: 18k white gold
Diameter: 20.5 x 26 mm
Bracelet: Integrated bracelet of 18k white gold
Circumference: app. 16.5 cm
Year: 1977

Accompanied by Vacheron Constantin box, letter from Vacheron Constantin and certificate from 1977.

Bezel set with 20 brilliant-cut diamonds, amounting to 2.06 ct. DKK 20,000–25,000 / € 2,700–3,350



776

776
PATEK PHILIPPE
Reference: 4197
Movement: Manual, cal. 16-250
Material: 18k gold
Diameter: 24.5 x 21.5 mm
Bracelet: Patek Philippe bracelet of 18k gold
Circumference: App. 15.5 cm
Year: 1970s

*Accompanied by later box and an additional dial.
(Shown below). DKK 35,000–40,000 / € 4,700–5,350*



778

778
CARL F. BUCHERER
Model: Mirabilis
Reference: 280-025
Movement: Quartz, cal. 280.002
Material: 18k gold
Diameter: 21.5 mm
Bracelet: Integrated bracelet of 18k gold
Circumference: App. 15 cm
Year: 2002

90 brilliant-cut diamonds - 0.85 ct. in total.

Accompanied by Carl F. Bucherer box, manual, three additional links (approx. 2.5 cm) and certificate from Bucherer Geneve 2002.

DKK 20,000–30,000 / € 2,700–4,000





779

779
ROLEX
Model: Datejust II
Reference: 116334
Movement: Automatic, cal. 3136
Material: Steel
Diameter: 41 mm
Bracelet: "Oyster" bracelet of steel
Circumference: app. 18.5 cm
Year: 2016

*Caseback no. 2410
Serial no. 482D26W0
Movement no. NP372348
Endlink no. 72210A*

Accompanied by Rolex box, manual, one additional link, hangtag, and certificate and purchase receipt from Klarlund 2016.

DKK 40,000–50,000 / € 5,350–6,700

781
ROLEX
Model: Daytona
Reference: 116528
Movement: Automatic chronograph, cal. 4130
Material: 18k gold
Diameter: 40 mm
Bracelet: "Oyster" bracelet of 18k gold
Circumference: App. 18 cm
Year: 2006

*Case no. 116528
Caseback no. 2118
Serial no. D446349
Movement no. C0187258
Folding clasp no. 78498*

Accompanied by Rolex box, manuals, hangtag and certificate from authorised retailer Ragner, 2006.

DKK 180,000–200,000 / € 24,000–27,000



781



780

780
ROLEX
Model: Datejust Oysterquartz
Reference: 17013
Movement: Quartz, cal. 5035
Material: 18k gold and steel
Diameter: 36 mm
Bracelet: "Oysterquartz" bracelet of 18k gold and steel
Circumference: app. 18 cm
Year: 1986

*Case no. 17013
Caseback no. 17000
Serial no. 9159320
Movement no. 0083136
Bracelet no. 17013B
Folding clasp no. 17013B 18*

The dial is set with numerous single-cut diamonds.

Accompanied by Rolex box and certificate from Hübner 1989.

DKK 40,000 / € 5,350





782

782
TAG HEUER
 Model: Carrera "Glassbox"
 Reference: CBK221G
 Movement: Automatic chronograph, cal. Heuer 02
 Material: Steel
 Diameter: 39 mm
 Strap: TAG Heuer alligator strap
 Clasp: TAG Heuer folding clasp of steel
 Year: 2022

This model is limited to 600 pcs.

Accompanied by TAG Heuer box, manual, purchase receipt from Klarlund 27 December 2022 and certificate.

This lot is subject to CITES export/import restrictions and can only be shipped to addresses within the EU or collected from one of our departments. Please contact the department for further details.

DKK 30,000–40,000 / € 4,000–5,350

784
PATEK PHILIPPE
 Model: Ellipse
 Reference: 4382
 Movement: Manual, cal. 16-250
 Material: 18k gold
 Diameter: 22.5 x 28 mm
 Strap: Alligator strap
 Buckle: Patek Philippe ellipse-shaped buckle of 18k gold
 Year: 1980s

The bezel and dial are set with numerous single-cut diamonds.

This lot is subject to CITES export/import restrictions and can only be shipped to addresses within the EU or collected from one of our departments. Please contact the department for further details.

DKK 40,000–50,000 / € 5,350–6,700



784



783

783
OMEGA
 Model: Seamaster Aqua Terra
 Reference: 2565.78.00
 Movement: Automatic, cal. 2520
 Material: Steel
 Diameter: 29 mm
 Bracelet: Omega bracelet of steel
 Circumference: app. 18 cm
 Year: 2006

Dial set with numerous circular-cut rubies. Bezel set with numerous brilliant-cut diamonds.

Accompanied by certificate from 2006.

DKK 25,000–30,000 / € 3,350–4,000

785
PATEK PHILIPPE
 Model: Calatrava
 Reference: 3338/2
 Movement: Manual, cal. 13,5
 Material: 18k white gold
 Diameter: 25 mm
 Bracelet: Integrated bracelet of 18k white gold
 Circumference: app. 16 cm
 Year: 1970

Accompanied by Georg Jensen box, white dial with roman numerals and certificate from Georg Jensen & Wendel 1970.

DKK 30,000 / € 4,000



785

786

PATEK PHILIPPE

Model: Perpetual Calendar

Reference: 5159G

Movement: Automatic, cal. 324 S QR

Material: 18k white gold

Diameter: 38 mm

Strap: Patek Philippe alligator strap

Clasp: Patek Philippe folding clasp of 18k white gold

Year: 2011



786

Accompanied by Patek Philippe box with built-in watch winder, manuals, service receipt from Patek Philippe (dated October 2023), certificate and purchase receipt from Hvelplund 2011.

Collecting watches is a journey that requires a lot of choices. Many good and bad decisions will be made as a collector matures. A developed collection is not necessarily like other developed collections, but one thing is sure: they will often include at least one complicated Patek Philippe watch.

The reference 5159G is interesting in many ways. What one usually looks at first is the dial. Although the watch has four hands and four apertures, it does not seem clumsy. The date display is elegantly shown in the centre of the dial via a retrograde hand, whereas the rest of the calendar is shown in three apertures. At six o'clock is the moon phase indicator, showcasing probably the most romantic of all horological complications.

When turning to the case design, it seems as if the watch has a closed caseback. However, after some inspection, a hinge and a lip show, indicating that it has an officer-style caseback that allows inspection of the handmade and quite complex movement. This emphasizes the understated and unpretentious sense of luxury that surrounds this watch.

When the watch is not worn, it can be put to rest in the accompanying Patek Philippe box with a built-in watch winder. This makes sure that the calendar is always correct. And do not be afraid of having to take the watch to your watchmaker anytime soon – it has just been serviced by Patek Philippe in October 2023.

This lot is subject to CITES export/import restrictions and can only be shipped to addresses within the EU or collected from one of our departments. Please contact the department for further details.

DKK 250,000–300,000 / € 33,500–40,000





787

787
PIAGET
 Model: Polo
 Reference: 8131 C725
 Movement: Quartz
 Material: 18k white gold and diamonds
 Diameter: 20 mm
 Bracelet: Integrated bracelet of 18k white gold and diamonds
 Circumference: app. 16 cm
 Year: 1990s

The dial, bracelet and case are set with numerous single-cut diamonds. The watch, incl. extra links, weighs approx. 108 g.

*Accompanied by five additional links (approx. 3 cm).
 DKK 60,000–80,000 / € 8,050–10,500*



789

789
PATEK PHILIPPE
 Reference: 3371/1
 Movement: Manual
 Material: 18k gold
 Diameter: 20 x 17.5 mm
 Bracelet: Integrated bracelet of 18k gold
 Circumference: app. 16.5 cm
 Year: 1960s

The watch weighs approx. 60 g.

Accompanied by Patek Philippe box and approx. 1.2 cm of shortened bracelet.

DKK 20,000–30,000 / € 2,700–4,000



788
VACHERON CONSTANTIN

Reference: 27532-PB
 Movement: Quartz, cal. E03001
 Material: 18k white gold
 Diameter: 22 mm
 Bracelet: Integrated bracelet of 18k white gold
 Circumference: app. 14.5 cm
 Year: 2000s

The watch weighs approx. 58 g.

Dial set with numerous single-cut diamonds. Bracelet and bezel set with numerous brilliant-cut diamonds.

DKK 30,000–40,000 / € 4,000–5,350



788



790

790
VAN CLEEF & ARPELS
 Model: Classique
 Reference: 18932 B2M
 Movement: Quartz, cal. 608
 Material: 18k gold
 Diameter: 21 mm
 Bracelet: Integrated bracelet of 18k gold
 Circumference: app. 16 cm
 Year: 2000s

The watch weighs approx. 52 g.

The lugs and bezel are set with numerous brilliant-cut diamonds.

Accompanied by later box.

DKK 35,000–40,000 / € 4,700–5,350



791
PIAGET
 Reference: 9706 A6
 Movement: Manual, cal. 9P1
 Material: 18k gold
 Diameter: 24 mm
 Bracelet: Integrated bracelet of 18k gold
 Circumference: app. 15.5 cm
 Year: 1970s

Dial of jade. Bezel set with numerous brilliant-cut diamonds and circular-cut emeralds.
 DKK 30,000–40,000 / € 4,000–5,350



791



793
JAEGER-LECOULTRE
 Movement: Manual
 Material: 14k gold
 Bracelet: Bespoke integrated bracelet of 14k gold
 Bracelet width: 36 mm
 Circumference: app. 18.5 cm
 Year: 1960s DKK 25,000–30,000 / € 3,350–4,000

793



792

792
ROLEX
 Model: Submariner "Hulk"
 Reference: 116610LV
 Movement: Automatic, cal. 3135
 Material: Steel
 Diameter: 41 mm
 Bracelet: "Oyster" bracelet of steel
 Circumference: app. 20.5 cm
 Year: 2015

*Case no. 116610
 Caseback no. 2360
 Serial no. 6G1R1224
 Movement no. 7723N4A3
 Endlink no. 97200*

Accompanied by Rolex box, two hangtags, bezel protector, manual, one additional bracelet link and certificate from 2015.

DKK 80,000–100,000 / € 10,500–13,500



794

794
HUBLOT
 Model: Big Bang
 Reference: 341.PE.230.RW.114
 Movement: Automatic chronograph, cal. HUB2894
 Material: 18k gold and titanium
 Diameter: 41 mm
 Strap: Hublot rubber strap
 Clasp: Hublot folding clasp of 18k gold and steel
 Year: 2010s

The bezel is set with numerous brilliant-cut diamonds.

Accompanied by Hublot box and travel box.
 DKK 60,000–80,000 / € 8,050–10,500



795

795
BLANCPAIN
Model: Ultra Slim
Reference: 6223-3642-55
Movement: Automatic, cal. 1150
Material: 18k gold
Diameter: 37.5 mm
Strap: Blancpain alligator strap
Buckle: Blancpain buckle of 18k gold
Year: 2005

Accompanied by Blancpain box, manual, brown strap and certificate from 2005.

Personal engraving on the caseback.

This lot is subject to CITES export/import restrictions and can only be shipped to addresses within the EU or collected from one of our departments. Please contact the department for further details.

DKK 40,000–50,000 / € 5,350–6,700



796

796
BLANCPAIN
Model: Villeret Quantième Phase de Lune
Reference: 6595
Movement: Automatic, cal. 95
Material: Steel
Diameter: 34 mm
Strap: Crocodile strap
Buckle: Buckle of steel
Year: 1990s

Accompanied by service receipt from Blancpain 2013.

This lot is subject to CITES export/import restrictions and can only be shipped to addresses within the EU or collected from one of our departments. Please contact the department for further details.

DKK 20,000–30,000 / € 2,700–4,000

797
IWC
Model: Portofino
Reference: 5251
Movement: Manual, cal. 9521
Material: 18k gold
Diameter: 46 mm
Strap: Black Urban Jürgensen alligator strap
Buckle: IWC buckle of 18k gold
Year: 1980s

Accompanied by IWC box, catalogue, manual, extra (chipped) crystal and a blank certificate.

This lot is subject to CITES export/import restrictions and can only be shipped to addresses within the EU or collected from one of our departments. Please contact the department for further details.

DKK 60,000–80,000 / € 8,050–10,500



797





798
PATEK PHILIPPE
 Model: Calatrava
 Reference: 2526J
 Movement: Automatic, cal. 12-600AT
 Material: 18k gold
 Diameter: 36 mm
 Strap: Leather strap
 Buckle: Buckle of steel
 Year: 1953



798

The Patek Philippe reference 2526 is one of the most collectible Patek Philippe wristwatches. But why? The main attraction of the watch is the enamel dial. On pocket watches from the 1800s to early 1900s, enamel dials were the standard, as wages were lower. But since the production of enamel dials require both time and an immense amount of skill, less costly and more robust printed dials became the norm during the 20th century. Secondly, the ref. 2526 features the first serially produced Patek Philippe movement with automatic winding – this being the calibre 12-600AT. This was a momentous achievement and the first in a line of many self-winding in-house movement. That being said, the calibre 12-600AT, with its beautifully engine-turned winding rotor, is perhaps the best looking of them all. Lastly, the case measures a boasting 36 mm, whereas its counterparts from the 1950-60s usually measured a few millimetres smaller. This means that the watch is much more wearable today.

What makes this example even more special is, that it has a movement number just 180 numbers after the very first reference 2526. Important to bear in mind is, that the movement numbers are not just for this reference but for all of Patek Philippe's production. Hence, this example is one of the earliest ever made. This is supported by the Extract from the Archives from Patek Philippe, confirming the year of production and sale to 1953. Moreover, it has the earliest iteration of the dial, where the indexes are not glued onto the enamel, but rather riveted onto it. The dial is furthermore in immaculate condition.

The caseback bears a personal engraving, leading to the history of the original owner. The watch was given after 25 years of faithful service in a larger Danish company. The watch comes directly from the family of the original owner of the watch.

Accompanied by an Extract from the Archives from Patek Philippe confirming the year of production and sale to 1953.
 DKK 200,000–300,000 / € 27,000–40,000



799

799
PATEK PHILIPPE
 Model: Calatrava
 Reference: 3944
 Movement: Quartz, cal. E23SC
 Material: 18k gold
 Diameter: 33 mm
 Strap: Lizard strap
 Buckle: Patek Philippe buckle of 18k gold
 Year: 1996

Accompanied by Patek Philippe box, manual, purchase receipt from Gübelin 1996 and certificate from 1996.

This lot is subject to CITES export/import restrictions and can only be shipped to addresses within the EU or collected from one of our departments. Please contact the department for further details.

DKK 50,000–60,000 / € 6,700–8,050



800

800
ROLEX
 Reference: 4431
 Movement: Manual
 Material: 18k gold
 Diameter: 33 mm
 Strap: Leather strap
 Year: 1946

*Caseback no. 4431
 Movement no. E 10179
 Serial no. 388302*

With Rolex' patented "Super Balance". Monogram on the caseback.

Accompanied by service receipt from 2019.
 DKK 40,000–50,000 / € 5,350–6,700



801

CARTIER

Model: Tank Louis

Reference: 2442

Movement: Quartz, cal. 057

Material: 18k gold

Diameter: 22 x 22 mm

Strap: Crocodile strap

Buckle: Cartier buckle of 18k gold

Year: 2000s

DKK 30,000–40,000 / € 4,000–5,350



801

803

CARTIER

Model: Tank

Reference: 7808

Movement: Manual, cal. 78-1

Material: 18k gold

Diameter: 20 x 20 mm

Strap: Crocodile strap

Clasp: Cartier folding clasp of 18k gold

Year: 1980s



803

This lot is subject to CITES export/import restrictions and can only be shipped to addresses within the EU or collected from one of our departments. Please contact the department for further details.

DKK 20,000–30,000 / € 2,700–4,000

802

A. LANGE & SÖHNE

Model: Saxonia Thin

Reference: 211.032

Movement: Manual, cal. L 093.1

Material: 18k rose gold

Diameter: 40 mm

Strap: A. Lange & Söhne alligator strap

Year: 2016

Accompanied by A. Lange & Söhne box, manual, polishing cloth, purchase receipt from Suarez 2016 and certificate.

This lot is subject to CITES export/import restrictions and can only be shipped to addresses within the EU or collected from one of our departments. Please contact the department for further details.

DKK 80,000–100,000 / € 10,500–13,500



802

804

OMEGA

Model: De Ville

Reference: 4632.30.31

Movement: Automatic, cal. 2627

Material: 18k gold

Diameter: 39 mm

Strap: Leather strap

Buckle: Buckle of gold-plated steel

Year: 2006



804

Accompanied by Omega box, hangtag, service receipts from 2006, additional dial and various movement parts.

DKK 40,000 / € 5,350



805

**805
GLASHÜTTE ORIGINAL**

Model: Senator "Meissen"
Reference: 100-10-01-01-04
Movement: Automatic, cal. 100
Material: 18k rose gold
Diameter: 40 mm
Strap: Glashütte Original alligator strap
Buckle: Glashütte Original Buckle of 18k rose gold
Year: 2012

Accompanied by Glashütte box, manual, purchase receipt and warranty from Wempe 2012, and certificate from 2012.

It is rare that watchmaking companies collaborate with firms outside of their industry. This watch, however, is the product of one such collaboration.

Perhaps the most legendary German porcelain maker, Meissen, has teamed up with the much younger German watchmaking company Glashütte Original. Together, they have made a series of watches that incorporate the specialties of both: top quality porcelain and beautifully made watches.

Although Meissen is more than 300 years old and Glashütte Original is just 30, their design languages perfectly emerge on this timepiece. Classical, yet up to date.

But what is it, that makes this porcelain dial so special, and why is it that we are so rarely presented with them? The short answer is that it is because of the difficulty of production. The porcelain must be carefully fired in an oven between 1,200-1,400 degrees Celsius and then hand painted. According to the website Deployant, this particular dial takes 8-10 hours to paint.

This is one of those watches that only gets better the closer you get to it. It must be seen through a loupe and tried on the wrist to really feel and understand the beauty of this piece.

This lot is subject to CITES export/import restrictions and can only be shipped to addresses within the EU or collected from one of our departments. Please contact the department for further details.

DKK 70,000-80,000 / € 9,400-10,500



806

806
GLASHÜTTE ORIGINAL
 Model: SeaQ Panorama Date
 Reference: 1-36-13-03-90-33
 Movement: Automatic, cal. 36-13
 Material: 18k gold
 Diameter: 43 mm
 Strap: Glashütte original rubber strap
 Buckle: Glashütte Original buckle of 18k gold
 Year: 2021

Accompanied by Glashütte Original box, manual and certificate from Knud Pedersen 2021.

*This lot is being sold by the request of a lawyer, an insurance company or a public authority.
 DKK 80,000–100,000 / € 10,500–13,500*



808

808
JAEGER-LECOULTRE
 Model: Master Compressor
 Reference: 148.2.60
 Movement: Automatic, cal. 960R
 Material: 18k rose gold
 Diameter: 37 mm
 Strap: Jaeger-LeCoultre leather strap
 Year: 2000s

*Accompanied by Jaeger-LeCoultre box and manual.
 DKK 50,000–60,000 / € 6,700–8,050*

807
OMEGA
 Model: Seamaster
 Reference: 210.92.44.20.01
 Movement: Automatic, cal. 8806
 Material: Steel and ceramic
 Diameter: 43.5 mm
 Strap: Omega rubber strap
 Buckle: Omega buckle of steel
 Year: 2010s

*This lot is being sold by the request of a lawyer, an insurance company or a public authority.
 DKK 20,000–30,000 / € 2,700–4,000*



807

809
AUDEMARS PIGUET
 Model: Royal Oak Off-Shore
 Reference: 25940SK
 Movement: Automatic chronograph, call. 2226/2840
 Material: Steel
 Diameter: 42 mm
 Strap: Audemars Piguet rubber strap
 Clasp: Audemars Piguet folding clasp of steel
 Year: 2010s

Accompanied by Audemars Piguet box, manual, additional rubber strap (used), service receipt from Klarlund 2020 and undated certificate from Westime, Los Angeles.

*This lot is being sold by the request of a lawyer, an insurance company or a public authority.
 DKK 80,000–100,000 / € 10,500–13,500*



809





810

810
CHANEL
 Model: J12
 Reference: H1338
 Movement: Quartz, cal. 956612
 Material: Steel and ceramic
 Diameter: 34 mm
 Bracelet: Chanel bracelet of steel and ceramic
 Circumference: app. 17 cm
 Year: 2000s.

The bezel and bracelet are set with numerous brilliant-cut diamonds.

Accompanied by Klarlund pouch.
 DKK 25,000–30,000 / € 3,350–4,000



811

811
ROLEX
 Model: Explorer
 Reference: 1016
 Movement: Automatic, cal. 1570
 Material: Steel
 Diameter: 36 mm
 Bracelet: “Oyster” bracelet of steel
 Circumference: app. 19 cm
 Year: 1972

Accompanied by Rolex box, manual, service receipt from 2002 and undated certificate (with matching serial number).

*Case no. 1016
 Caseback no. 1016 I.72
 Serial no. 2986185
 Movement no. 172914
 Bracelet no. 78360
 Endlink no. 558
 Folding clasp no. 78360*
 DKK 70,000–80,000 / € 9,400–10,500



812



812
PATEK PHILIPPE
 Master Timing System of hammer-lacquered metal. Gray box with 20 Patek Philippe clocks connected to control electronics. One contact per clock, allowing the user to choose between “correct position” and “normal.” The module measures approximately 80 x 38 x 25 cm. Inducta has produced the module for Patek Philippe. 1970s.

These modules were made for airports, banks, radio stations, and similar companies that needed precise time distribution before the internet era.

The system has not been tested. Please request the condition report for more information.
 DKK 60,000–80,000 / € 8,050–10,500



813

813
LECOULTRE
 Model: “Bradley II”
 Reference: 51039
 Movement: Manual, cal. 480/CW
 Material: 14k gold
 Diameter: 34 mm
 Strap: Leather strap
 Buckle: Buckle of gold-plated steel
 Year: 1950s DKK 20,000–30,000 / € 2,700–4,000

814

URBAN JÜRGENSEN

Reference: 2

Movement: Automatic, cal. FP71

Material: 18k. gold

Diameter: 38 mm

Strap: Leather strap

Buckle: buckle of gold-plated steel

Year: 1990

Very few watchmaking companies with Danish origin are internationally renowned. None are more appreciated than Urban Jürgensen. Although the company has gone through many different phases throughout its existence, it is today mostly recognised by its wristwatches. To collectors of fine watchmaking, the name Derek Pratt brings a smile to the face. Very few watchmakers have made better looking, higher quality dials than Pratt. He managed to combine historical methods of engine-turning and hand-making with modern sizing and aesthetics. And with a CEO like Peter Baumberger, who never let anything leave the atelier unless it was 100% perfect, you can expect incredibly beautiful and well-made watches.

After 251 years of existence, Urban Jürgensen is once again being revived by Finnish/Swiss watchmaking genius Kari Voutilainen. Hence, collectors around the globe are looking for Jürgensen pieces to add to their collections with renewed interest – and there are not that many to choose from, as they were all made in limited quantities.

This particular watch was sold in May 1990, just a few weeks after the launch during BaselWorld. This is confirmed by the extract from the archives, which also tells us that the watch was made in 1989.

Accompanied by Urban Jürgensen ostrich leather-lined mahogany box, manuals in English and German, Urban Jürgensen alligator strap with Urban Jürgensen buckle of 18k gold and extract from the archives confirming the date of sale to May 5th, 1990, and the date of manufacture to November 6th, 1989 (a year earlier than the launch of the watch).

This lot is subject to CITES export/import restrictions and can only be shipped to addresses within the EU or collected from one of our departments. Please contact the department for further details.

DKK 300,000–400,000 / € 40,000–53,500



814



815

MONTBLANC

Model: 1858 Chronograph Tachymeter

Reference: 7332

Movement: Manual chronograph, cal. MB M16.29

Material: 18k gold

Diameter: 44 mm

Strap: Montblanc alligator strap

Buckle: Montblanc buckle of 18k gold

Year: 2010s

Accompanied by Montblanc box, manual and blank certificate. This watch bears no. 006/100.

*This lot is subject to CITES export/import restrictions and can only be shipped to addresses within the EU or collected from one of our departments. Please contact the department for further details.
DKK 100,000–120,000 / € 13,500–16,000*



815



816

816

BREITLING

Model: Chronomat

Reference: K13050.1

Movement: Automatic chronograph, cal. 7750

Material: 18k gold

Diameter: 39 mm

Bracelet: Breitling bracelet of 18k gold

Circumference: App. 18 cm

Year: 1990s

DKK 100,000 / € 13,500



817

817

BULGARI

Model: Tubogas

Reference: BB 23 2T

Movement: Quartz

Material: 18k gold

Diameter: 23 mm

Bracelet: Integrated bracelet of 18 white gold and gold

Circumference: app. 15.5 cm, size M

Year: 1987

Accompanied by Bulgari box and certificate from 1987.

DKK 20,000–30,000 / € 2,700–4,000



818
VACHERON CONSTANTIN
 Model: Overseas Chronograph
 Reference: 49150/B01A-9097
 Movement: Automatic chronograph
 Material: Steel
 Diameter: 42 mm
 Bracelet: Integrated bracelet of steel
 Circumference: app. 17.5 cm
 Year: 2005

Accompanied by Vacheron Constantin box, manual, three additional links (approx. 24 mm), Vacheron Constantin alligator strap with Vacheron Constantin folding clasp of steel, polishing cloth, Vacheron Constantin travel pouch, service receipt from 2017 and certificate from 2005.

This lot is subject to CITES export/import restrictions and can only be shipped to addresses within the EU or collected from one of our departments. Please contact the department for further details.



818

819
HERMÈS
 Model: Belt
 Movement: Quartz
 Material: Steel
 Diameter: 26 x 29 mm
 Strap: Hermès strap
 Buckle: Hermès buckle of steel
 Year: 2000s

*The watch is set with numerous brilliant diamonds.
 DKK 20,000–30,000 / € 2,700–4,000*



819



820

820
GLASHÜTTE ORIGINAL
 Model: PanoMaticLunar
 Reference: 19002462301
 Movement: Automatic, cal. 90
 Material: Steel
 Diameter: 40.5 mm
 Strap: Glashütte Original alligator strap
 Buckle: Glashütte Original buckle of steel
 Year: 2023

Accompanied by Glashütte Original box, manual and certificate from Vassos Eliades 2023.

This lot is subject to CITES export/import restrictions and can only be shipped to addresses within the EU or collected from one of our departments. Please contact the department for further details.

DKK 50,000–60,000 / € 6,700–8,050





821

821
ROLEX
Model: GMT-Master
Reference: 1675
Movement: Automatic, cal. 1570
Material: 18k gold and steel
Diameter: 39 mm
Bracelet: "Oyster" bracelet of 18k gold and steel
Circumference: app. 19.5 mm
Year: 1966

Case no. 1675
Caseback no. 1675 IV60
Serial no. 1437550
Movement no. D62589
Bracelet no. 78363
Endlink no. 458B
Folding clasp no. 78363 18

Accompanied by Rolex box and hangtag.
DKK 70,000–80,000 / € 9,400–10,500



823

823
ROLEX
Model: Datejust 26
Reference: 179163
Movement: Automatic, cal. 2235
Material: 18k gold and steel
Diameter: 26 mm
Bracelet: "Oyster" bracelet of 18k gold and steel
Circumference: app. 14.5 cm
Year: 2005

Case no. 179163
Caseback no. 2320
Movement no. 2240816
Serial no. D870556
Endlink no. 72133

Accompanied by Rolex box, certificate, manual, service box og service card from December 2023.
DKK 25,000–30,000 / € 3,350–4,000



822

822
ROLEX
Model: GMT-Master II
Reference: 116719BLRO
Movement: Automatic, cal. 3186
Material: 18k white gold
Diameter: 40 mm
Bracelet: "Oyster" bracelet of 18k white gold
Circumference: app. 17.5 mm
Year: 2010s

Caseback no. 2349
Serial no. 9597D172
Movement no. 1A9602V3
Endlink no. 78209

This lot is being sold by the request of a lawyer, an insurance company or a public authority.
DKK 150,000–200,000 / € 20,000–27,000



824

824
ROLEX
Model: GMT-Master II
Reference: 126710BLRO
Movement: Automatic, cal. 3285
Material: Steel
Diameter: 40 mm
Bracelet: "Jubilee" bracelet of steel
Circumference: app. 17.5 cm
Year: 2010s

Caseback no. 2520
Serial no. 10H5J144
Movement no. 5J12M910
Endlink no. 69200

Personal engraving on the caseback.

This lot is being sold by the request of a lawyer, an insurance company or a public authority.
DKK 100,000–150,000 / € 13,500–20,000

825

CARTIER

Model: Baignoire

Reference: 78094

Movement: Manual, cal. 78

Material: 18k gold

Diameter: 22.5 x 31.5 mm

Strap: Cartier alligator strap

Buckle: Cartier buckle of gold-plated steel

Year: 1970s

Accompanied by Cartier box.

The watch cannot be wound nor set at present.

This lot is subject to CITES export/import restrictions and can only be shipped to addresses within the EU or collected from one of our departments. Please contact the department for further details.

DKK 20,000–30,000 / € 2,700–4,000



825

826

CHOPARD

Model: Tonneau Power Reserve

Reference: 2248

Movement: Automatic, cal. 9644

Material: 18k gold

Diameter: 32.5 x 30.5 mm

Strap: Brown strap

Buckle: Chopard buckle of 18k gold

Year: 1995

Accompanied by Chopard box, manual, service receipts from 2010 and 2022 and certificate from authorised retailer Stenstrup 1995.

DKK 20,000–25,000 / € 2,700–3,350



826



FINE SPIRITS

Thursday 13 June 6 pm

Online Auction at bruun-rasmussen.dk



CHAMPAGNE

Thursday 13 June 8 pm
Online Auction at bruun-rasmussen.dk



Cognac, Grande
Champagne 1858



Cognac, Grande Fine
Champagne 1847



Armagnac, Domaine
de Cavaillon 1932



Grand Armagnac, Établissements
Nicolas 1895



Armagnac, Chateau
La Brise 1918

1 bt. Cognac, Grande Champagne, Nicolas 1858
Owc. DKK 5,000–7,000 / € 670–940

1 bt. Grand Armagnac, Établissements Nicolas 1895
Owc. DKK 5,000–7,000 / € 670–940

1 bt. Cognac, Grande Fine Champagne, Nicolas
1847 Ow. DKK 5,000–7,000 / € 670–940

1 bt. Bas Armagnac, Chateau La Brise, Francis
Darroze 1918 DKK 3,000–4,000 / € 400–535

1045003–25

1 bt. Bas Armagnac, Domaine de Cavaillon, A
Lagrange (Landes) 1932
DKK 3,000–4,000 / € 400–535





Champagne Grand Cru
Blanc de Blanc 1996



Champagne Grand Cru
Blanc de Blanc 1999



Champagne "Vintage",
Krug 1996



Champagne "Vintage",
Krug 2002



Champagne "Vintage",
Krug 1990

3 bts. Champagne Grand Cru Blanc de Blanc "Cuvée S" Le Mesnil, Salon 1996 A (hf/in).
DKK 24,000–32,000 / € 3,200–4,300

6 bts. Champagne Grand Cru Blanc de Blanc "Cuvée S" Le Mesnil, Salon 1999 A (hf/in). Owc.
DKK 30,000–40,000 / € 4,000–5,350

4 bts. Champagne "Vintage", Krug 1996 A (hf/in).
Oc. DKK 16,000–22,000 / € 2,150–2,950

1 bt. Mg. Champagne "Vintage", Krug 2002 A (hf/in). Oc. DKK 9,000–12,000 / € 1,200–1,600

4 bts. Champagne "Vintage", Krug 1990 A (hf/in).
Oc. DKK 18,000–24,000 / € 2,400–3,200

INDEX

A

A. Lange & Söhne	802
Albert, Gilbert	597, 598
Andersen, Knud V.	594
Audemars Piguet	809

B

Binner, Bodil	605
Blancpain	795, 796
Breitling	816
Bucherer	689
Bulgari	610, 611, 612 614, 615, 817

C

Cartier	619, 772, 773 801, 803, 825
Chanel	562, 571, 580 581, 810
Chaumet	621, 622
Chopard	618, 826

D

Dior, Christian	561, 563, 568
Dulong, Marianne	631

F

Fog, Astrid	625
Frascarolo, Pierino	616

G

Georg Jensen & Wendel	627
Glashütte Original	805, 806, 820

H

Halberstadt, A.	644
Hansen, Hans	600
Hartmann's	607, 609
Hermès	564, 565, 570 574, 576, 577, 578 579, 585, 590, 819
Hublot	794

I

IWC	797
-----	-----

J

Jaeger-LeCoultre	793, 808
Jensen, Georg	623, 624, 626 628, 629
Jürgensen, Urban	814

K

Kløve, Jytte	601, 602, 603
--------------	---------------

L

Lapponia	596
Lynggaard, Ole	630

M

Mikimoto	632
Montblanc	815

N

Nielsen, Evald	599
----------------	-----

O

Omega	767, 769, 770 771, 783, 804, 807
Oromalia	604

P

Patek Philippe	775, 776, 784 785, 786, 789, 798 799, 812
Piaget	787, 791

R

Rasmussen, Chr.	608
Rolex	765, 766, 768 774, 779, 780, 781 792, 800, 811, 821 822, 823, 824
Rygaard, Klaus	613

T

TAG Heuer	782
Tiffany & Co.	606

V

Vacheron Constantin	777, 788, 818
Van Cleef & Arpels	620, 790
von Arenstorff, Diamonds by	633
Vuitton, Louis	566, 567, 569 572, 573, 575, 582 583, 584, 586, 587 588, 589, 591

W

Weckström, Björn	592, 593, 595
------------------	---------------

Disse købsvilkår udgør Bruun Rasmussen Kunstauktioner A/S' ("BRK") købsvilkår for Liveauktioner og er gældende fra 1. februar 2017.

BRK kan til enhver tid ændre købsvilkårene.

Ved bud accepterer budgiver/køber at være bundet af de til enhver tid gældende købsvilkår, som fremgår på bruun-rasmussen.dk. Købsvilkårene gælder både i forhold til erhvervsdrivende og forbrugere.

FØR AUKTIONEN

1 VURDERING AF GENSTANDE

1.1 Alle udbudte genstande er vurderet af BRK. Vurderingen er et skøn over det forventede hammerslag, jf. punkt 5.3. Vurderingen er baseret på tidligere salg af samme type genstande og erfaringer hos BRK. Hammerslag kan derfor falde højere eller lavere ud end vurderingen.

2 BESKRIVELSE AF GENSTANDE

2.1 Udbudte genstande præsenteres med fotos og beskrivelse i kataloger og på bruun-rasmussen.dk. Beskrivelsen foretages efter bedste overbevisning af BRK og ud fra en nøje undersøgelse efter den på salgstidspunktet herskende opfattelse blandt eksperter.

2.2 De udbudte genstande er af en alder og art, der bevirker, at de ofte er behæftede med slitage, mangler, beskadigelser og reparationer. Som udgangspunkt sælges alt som brugte genstande, og derfor indeholder beskrivelsen i kataloget og på bruun-rasmussen.dk ikke en redegørelse for ovenstående punkter eller genstandens stand.

2.3 I visse tilfælde vælger BRK at beskrive en genstands oprindelse. Det sker, hvis en tidligere ejer er offentlig kendt, og/eller hvis historien om et tidligere ejerskab belyser genstanden og dens art. Omvendt sker det også, at sådanne informationer udelades fra beskrivelsen, f.eks. for at imødekomme sælgers ønske om diskretion.

2.4 Vurderingen og beskrivelsen kan blive revideret forud for auktionen. Ændringer offentliggøres på bruun-rasmussen.dk

3 EFTERSYN

3.1 Udbudte genstande udstilles op til auktionen i et show-room hos BRK. Potentielle budgivere opfordres til at se genstanden efter i detaljer og har selv ansvaret for at forvise sig om dens stand på disse eftersyn, hvor der også er mulighed for at rådføre sig hos vurderingssagkyndige.

3.2 Hvis en potentiel køber ikke har mulighed for at besigtige genstanden ved selvsyn, kan der i de fleste tilfælde udfærdiges en konditionsrapport. Beskrivelsen heri er foretaget efter BRK's bedste overbevisning, men er ikke baseret på videnskabelige undersøgelser. En konditionsrapport tjener blot som identifikation og er ment som en hjælp til budgivere, der ikke selv har mulighed for at besigtige genstanden på eftersynet.

UNDER AUKTIONEN

4 BRK'S ROLLE

- 4.1 Salget af en genstand formidles af BRK på vegne af sælger. BRK afhænder altid udbudte genstande til den højst mulige pris under budgivningen.
- 4.2 Udbudte genstande kan have en med sælger aftalt mindstepris, hvorunder den ikke kan sælges. Denne pris er fortrolig.
- 4.3 Liveauktioner overværes af en af Justitsministeriets beskikket auktionsleder, der sikrer, at auktionerne går retmæssigt for sig.

5 BUDGIVNING

- 5.1 Auktionerne afvikles i danske kroner. De tilnærmelsesvis beløb i euro/US dollar vil blive oplyst på skærme i auktionssalen og i øvrigt på opfordring.
- 5.2 Auktionarius bestemmer overbuds størrelse og i hvilket tempo, auktionen afvikles. Overbud stiger normalt med 5 % - 10 % i forhold til det foregående bud. Normalt sælges der 50-100 katalognumre i timen.
- 5.3 Hammerslag betegner både det forhold, at auktionarius slår med hammeren og derved markerer budgivningens afslutning, og den pris (budsum), den udbudte genstand sælges til. Se punkt 7 vedrørende beløb, der tillægges hammerslaget.
- 5.4 Køber er den budgiver, der opnår hammerslag. Ved hammerslaget indgås på baggrund af disse købsvilkår en bindende købs-/salgsaftale.
- 5.5 Bydes på andres vegne, hæfter budgiver som selvskyldnerkautionist for handlen.
- 5.6 Genstande købes som beset, og køber har uanset budtype ingen fortrydelsesret, heller ikke efter forbrugeraftaleloven.
- 5.7 Budgiver skal efter anvisninger fra BRK identificere sig og dokumentere sin betalingsdygtighed, f.eks. ved registrering af gyldigt betalings-/kreditkort, bankgaranti eller indbetaling af depositum.
- 5.8 BRK kan nægte at acceptere et bud, hvis en tilstrækkelig sikkerhed for betaling mangler, eller hvis budgiver tidligere har misligholdt betalingsforpligtigelser ved køb hos BRK.
- 5.9 Auktionslederen træffer i samråd med auktionarius afgørelse i alle tvivlstilfælde omkring budgivningen.

6 BUDTYPER

- 6.1 Der er følgende muligheder for at afgive bud:
PERSONLIGT FREMMØDE:
 Registrering og udlevering af bydeskilt foregår ved indgangen til auktionssalen. Når budgiver ønsker at byde, signaleres dette til auktionarius ved at række bydeskiltet i vejret og tydeligt fremvise dets nummer.

KOMMISSIONSBUD:

Det ønskede maksimale bud kan afgives via bruun-rasmussen.dk frem til auktionens start eller pr. e-mail, fax eller telefon, så budet er modtaget senest 24 timer forud for auktionens start. En kommissionær byder på budgivers vegne inden for rammerne af det ønskede maksimalbud og vil altid afgive lavest muligt overbud.

TELEFONBUD:

I forhold til visse genstande er der mulighed for at blive ringet op af en medarbejder fra BRK, der vil byde på budgivers vegne under auktionen. Servicen kan bestilles via bruun-rasmussen.dk indtil tre timer før auktionens start.

LIVE BIDDING:

Det er muligt at følge auktionen live og byde med via bruun-rasmussen.dk

FORAUKTION:

Visse Liveauktioner indledes med en Onlineauktion. De højeste bud på Onlineauktionen danner udgangspunktet på den efterfølgende Liveauktion.

EFTER AUKTIONEN

7 BELØB, DER TILLÆGGES HAMMERSLAGET

- 7.1 I tillæg til hammerslaget, jf. punkt 5.3, skal køber for den enkelte genstand betale købersalær og, hvis betingelserne er opfyldt, de øvrige beløb, der er nærmere beskrevet nedenfor. Det samlede beløb, som køber skal betale til BRK, benævnes "købesummen".
 7.1.1 Købersalær: Hammerslaget tillægges et salær til BRK. På Liveauktioner udgør salæret 25,6 % af hammerslaget + moms af salæret, i alt 32 %. For frimærker og mønter udgørsalæret 20 % af hammerslaget + moms af salæret, i alt 25 %.
 7.1.2 "LIVE bidding": BRK's "LIVE bidding"-software via bruun-rasmussen.dk er gratis at benytte for budgivere.
 7.1.3 Fuldmoms: Visse genstande handles efter de gældende regler om fuldmoms. Her beregnes der moms på 25 % af både hammerslag og salær. Disse genstande er i beskrivelsen i kataloget og på bruun-rasmussen.dk mærket med symbolet "*" eller med teksten: "Dette emne handles i fuldmoms".
 7.1.4 Kunstnerafgift: Ifølge dansk lovgivning om ophavsret skal der opkræves kunstnerafgift (følgeretsvederlag) for værker af nyere danske og visse udenlandske kunstnere, som enten er nulevende eller ikke har været døde i mere end 70 år. Kunstnerafgiften opkræves på vegne af VISDA. Disse værker er i kataloget mærket med "ARR" (Artist's Resale Right) og på bruun-rasmussen.dk med teksten "Dette emne er belagt med kunstnerafgift". Kunstnerafgiften tillægges hele hammerslaget + salær (ekskl. moms), når beløbet overstiger 300 euro, som angivet nedenfor:

Hammerslag + salær (ekskl. moms)	Betalingsssats
300,01 - 50.000 euro	5%
50.000,01 - 200.000 euro	3%
200.000,01 - 350.000 euro	1%
350.000,01 - 500.000 euro	0.5%
over 500.000 euro	0.25%

Kunstnerafgiften kan ikke overstige 12.500 euro (ekskl. moms) for den enkelte genstand. Afgiften skal betales i danske kroner, og omregningskursen (EUR/DKK) fastsættes af VISDA.

- 7.1.5 Betalings-/kreditkortgebyr: BRK forbeholder sig ret til at opkræve de af indløsningselskaberne pålagte betalings-/kreditkortgebyrer. Satserne fremgår ved budgivning via bruun-rasmussen.dk og ved betaling.

8 BETALINGSFRIST

- 8.1 Købesummen forfalder til betaling ved hammerslaget, og køber har herefter otte dage til at betale købesummen til BRK.

9 BETALINGSMÅDER

- 9.1 Betaling kan ske på følgende måder:

A: Med betalings-/kreditkort (Dankort, Visa, MasterCard, Maestro, Diners Club, JCB og China UnionPay) eller kontant (op til 14.999 kr.) i auktionssalen eller efterfølgende i en afdeling hos BRK. Bemærk, at vi ikke modtager 500-eurosedler.

B: Med betalings-/kreditkort (Dankort, Visa, MasterCard, Maestro, Diners Club og JCB) på bruun-rasmussen.dk under købers personlige side.

C: Via bankoverførsel til BRK's konto i Danske Bank: 4183 4310970638 · Swift/BIC: DABADKKK · IBAN: DK4130004310970638.

10 MOMSFRTAGELSE, -BETALING OG -DEPONERING

- 10.1 Visse købere kan vælge hvilken momstype, der skal være gældende for handlen. Valget skal meddeles BRK senest to hverdage efter købet og kan ikke omgøres.

A: Momsregistrerede virksomheder i Danmark kan vælge, at handlen skal ske efter reglerne om fuldmoms, jf. punkt 7.1.3.

B: Momsregistrerede virksomheder i et andet EU-land kan fritages for dansk moms, når det kan dokumenteres, at genstanden er transporteret til den udenlandske adresse, som køber har oplyst over for BRK, og som er anført på fakturaen. I sådanne tilfælde skal der afregnes moms efter de gældende regler i det land, hvor køber er momsregistreret. Det tilrådes at søge oplysning hos de lokale myndigheder. Køber kan undlade at gøre brug af muligheden for momsfritagelse og i stedet betale dansk brugtmoms/fuldmoms.

C: Købere med bopæl uden for EU kan fritages for dansk moms, når det kan dokumenteres, at genstanden er transporteret ud af EU. BRK udsteder så vidt muligt og mod gebyr de fornødne eksportpapirer, som skal fremvises ved toldmyndighederne. Køber kan undlade at gøre brug af muligheden for momsfritagelse og i stedet betale dansk brugtmoms/fuldmoms.

- 10.2 Momsregistrerede virksomheder i et andet EU-land og købere med bopæl uden for EU skal deponere den danske moms af fakturabeløbet hos BRK, indtil eksporten er gennemført på dokumenteret lovligt vis. Foretages eksporten af en af BRK godkendt speditor, skal momsens ikke deponeres. Se listen over godkendte speditorer på bruun-rasmussen.dk

11 OVERSKRIDELSE AF BETALINGSFRIST

- 11.1 Overskrides en betalingsfrist, herunder fristen i punkt 8, opkræves morarenter, som beregnes efter Nationalbankens officielle udlånsrente + 8 % om året af det skyldige beløb.

11.2 Betales købesummen inkl. renter ikke senest ti dage efter, at der er fremsat påkrav herom, er BRK berettiget til at søge købesummen betalt ved modregning i depositum/ved træk på bankgaranti eller at hæve købet.

11.3 Hæves købet, er BRK berettiget til at sælge genstanden på en ny auktion og kræve omkostningerne og en eventuel difference mellem hammerslag (samt salær), der er opnået på de to auktioner, betalt af den misligholdende køber.

- 11.4 Alle forfaldne krav (inkl. omkostninger), som ikke betaales rettidigt, kan BRK i tillæg til inkasso søge inddrevet på følgende måder:

A: For købers regning sælge genstande indleveret til auktion af eller på vegne af køber. Salget kan gennemføres uden hensyntagen til en aftalt mindstepris. Genstande indleveret til auktion kan ikke kræves udleveret, så længe forfalden gæld henstår ubetalt.

B: Inddrage købers tilgodehavende hos BRK, herunder tilgodehavende fra salg af genstande indleveret af eller på vegne af køber, uanset om et sådant tilgodehavende stammer fra auktionssalg, som ligger forud for eller efter tidspunktet for købers misligholdelse.

12 AFHENTNING OG UDLEVERING

- 12.1 Ejendomsretten til en købt genstand overgår til køber, når hele købesummen inkl. eventuelle renter og gebyrer er betalt, og først herefter kan udlevering af genstanden finde sted.
- 12.2 Ved udlevering af en købt genstand forbeholder BRK sig retten til at kræve tilfredsstillende dokumentation for, at den person, som ønsker genstanden udleveret, enten selv er køberen eller er bemyndiget af køberen til at få genstanden udleveret.
- 12.3 Udlevering af visse våben kræver forevisning af gyldig våbentilladelse. Sådant krav er angivet med teksten "Køb af dette emne kræver forevisning af gyldig våbentilladelse" i kataloget og på bruun-rasmussen.dk
- 12.4 Købte genstande henligger fra hammerslaget for købers regning og risiko. Afhentning skal ske senest otte hverdage efter sidste auktionsdag.
- 12.5 Foretages afhentningen ikke rettidigt, transporteres de købte genstande til et lager for købers regning og risiko. Transporten koster 150 kr. inkl. moms pr. genstand, og opbevaringen koster 150 kr. inkl. moms pr. genstand pr. påbegyndt uge. Henligger en genstand uafhentet i så lang tid, at lagerlejen overstiger genstandens værdi, er BRK berettiget til for købers regning og risiko og uden hensyn til mindstepris at bortauktionere genstanden eller sælge den underhånden. Køber hæfter til transport og lagerleje, der ikke dækkes ved sådant salg.
- 12.6 I henhold til gældende hvidvasklovgivning skal køber i visse tilfælde udlevere identitetsoplysninger og fremvise billed-id til BRK, før køber kan få den købte genstand i sin besiddelse

13 FORSENDELSE

- 13.1 Er køber forhindret i selv at afhente en genstand, tilbyder BRK for købers regning og risiko at emballere og arrangere forsendelse enten med post eller speditør. Se punkt 12.2 angående legitimation.

14 EKSPORTTILLADELSE

- 14.1 For at sikre at dansk kulturarv af afgørende betydning forbliver i Danmark, kan Kulturværtdiudvalget for visse genstandes vedkommende nedlægge eksportforbud. Hvis køber ønsker at eksportere en genstand ud af Danmark, hvor der er nedlagt et eksportforbud, annulleres købet, og Kulturværtdiudvalget er forpligtet til at overtage genstanden til den pris, der blev opnået på auktionen. Køber kan ikke rejse krav mod BRK som følge af, at et eksportforbud bliver nedlagt.
- 14.2 Visse genstande er omfattet af Washingtonkonventionen, også kendt som CITES, der har til formål at stoppe ulovlig handel med genstande fremstillet af udryddelsestruede vilde dyr og planter. Såfremt en genstand er omfattet af Washingtonkonventionen, CITES, liste 1, vil det fremgå af beskrivelsen på bruun-rasmussen.dk og være markeret med symbolet "©" i kataloget. Følgende regler gør sig gældende:
 - A: Genstande omfattet af Washingtonkonventionen, CITES, liste 1, må kun handles, når der foreligger en dispensation i form af et såkaldt CITES-salgscertifikat. BRK indhenter det fornødne certifikat fra Naturstyrelsen, der tillader handel og eksport til lande inden for EU. Dog kan genstande, som er færdigforarbejdet før 1947, frit handles inden for EU uden et certifikat.
 - B: Det er alene genstande omfattet af Washingtonkonventionen, CITES, liste 1, som er særkilt markeret på bruun-rasmussen.dk og i kataloget. Genstande omfattet af Washingtonkonventionen, CITES, liste 2, der frit kan sælges og transporteres inden for EU, er ikke særkilt markeret.
 - C: Ved eksport til lande uden for EU skal der uanset årstallet for genstandens færdigforarbejdning altid indhentes en CITES-reeksporttilladelse fra Naturstyrelsen,

når genstanden er omfattet af Washingtonkonventionen, CITES, liste 1 og 2. Denne eksporttilladelse kan normalt indhentes problemfrit, når liste 1-genstande enten er solgt med et CITES-salgscertifikat eller er færdigforarbejdet før 1947. Liste 2-genstande opnår ligeledes normalt problemfrit en reeksporttilladelse. Eventuelle omkostninger, der opkræves af de danske myndigheder i forbindelse med udstedelse af en reeksporttilladelse, vil blive pålagt købers faktura.

D: I forbindelse med eksport til lande uden for EU kan særlige regler gøre sig gældende ifm. den efterfølgende import, og køber opfordres til at indhente oplysninger fra egne myndigheder.

15 MANGLER VED KØBTE GENSTANDE

- 15.1 Købelovens mangelsregler kan finde anvendelse. Nedenfor er angivet et ikke udtømmende uddrag af købers mangelsbeføjelser.
- 15.2 Køber er berettiget til at annullere et køb, hvis beskrivelsen har været behæftet med væsentlige fejl, der har ført til et højere hammerslag, end en korrekt beskrivelse ville have resulteret i. I sådanne tilfælde vil den samlede købesum blive refunderet. Køber kan ikke kræve betaling af renter af købesummen eller kræve dækning af anden udgift eller tab.
- 15.3 Et køb kan ikke annulleres, og køber kan ikke kræve købesummen refunderet eller rejse noget andet krav mod BRK, hvis beskrivelsen af genstanden er i overensstemmelse med punkt 2, eller hvis en påvisning af falskneri havde krævet brug af videnskabelige metoder, der enten ikke var tilgængelige på salgstidspunktet, havde været uforholdsmæssigt omkostningskrævende at anvende eller havde ført til beskadigelse af den pågældende genstand.
- 15.4 Krav om annullering af et køb skal meddeles BRK, når køber er blevet bekendt med det forhold, der berettiger køber til at annullere købet, dog senest to år fra den seneste afhentningsdato efter punkt 12.4. Den købte genstand skal returneres til BRK i samme stand som på hammerslagstidspunktet. Overholdes disse betingelser ikke, mister køber retten til at annullere købet og kan ikke kræve købesummen refunderet. Køber er selv ansvarlig for at betale de omkostninger, der er forbundet med returnering af genstanden.

16 INDSIGELSE- OG ANSVARSBEGRÆNSNING

- 16.1 BRK tager forbehold for fejl, tekniske vanskeligheder samt udefrakommende misbrug eller forstyrrende påvirkning under auktionen. Budgetgiver kan ikke rejse noget krav mod BRK som følge heraf.
- 16.2 Køber er i alle tilfælde selv ansvarlig for korrekt betaling af moms og andre afgifter, gebyrer mv. i overensstemmelse med danske og udenlandske regler.
- 16.3 Medmindre andet fremgår af disse købsvilkår, kan BRK aldrig blive ansvarlig for budgetgivers/købers driftstab, avancetab, andre indirekte tab eller følgeskader.

17 PERSONDATAPOLITIK

- 17.1 Det er vigtigt for BRK at sikre fortrolighed og sikkerhed omkring budgetgivers/købers personlige oplysninger. Persondatapolitikken fremgår af bruun-rasmussen.dk.

18 KLAGE, TVISTLØSNING OG LOVVALG

- 18.1 Har budgetgiver/køber en klage, kan der altid rettes henvendelse til BRK.
- 18.2 Lykkes det ikke at finde en løsning, kan forbrugere sende en klage til Nævnenes Hus, Toldboden 2, 8800 Viborg, e-mail: naevneneshus.dk. Forbrugere med bopæl i et andet EU-land end Danmark kan klage til EU-Kommissionens online klageportal via hjemmesiden: <http://ec.europa.eu/odr>.
- 18.3 Tvister skal indbringes i Danmark ved Københavns Byret, jf. dog punkt 18.2. I forbrugerforhold gælder de ufravigelige værnetingsregler.

Bruun Rasmussen Kunstauktioner

Rev. 03.24

CONDITIONS OF PURCHASE – LIVE AUCTIONS

These conditions of purchase represent Bruun Rasmussen Kunstauktioner A/S' ("BRK") conditions of purchase for Live Auctions and are effective from 1 January 2017. BRK may modify the conditions of purchase at any time.

By bidding, the bidder/buyer accepts the current conditions of purchase as they appear on bruun-rasmussen.dk. The conditions of purchase are applicable to both business owners and consumers.

BEFORE THE AUCTION

1 VALUATION OF ITEMS

- 1.1 All the offered items are valued by BRK. The valuation is an estimate based on the expected hammer price, see paragraph 5.3. The estimate is based on the previous sale of similar items as well as BRK's past experience. The hammer price can therefore be higher or lower than the estimated price.

2 DESCRIPTION OF ITEMS

- 2.1 Items up for auction are presented with photographs and descriptions in catalogues and on bruun-rasmussen.dk. The description is worded according to the best of BRK's knowledge and based on detailed research in accordance with the prevailing views among experts at the time of sale.
- 2.2 The items up for auction are of an age and nature that often mean that they are in a worn, repaired or damaged condition. As a starting point everything is sold as used items. For this reason, the descriptions in the catalogue or at bruun-rasmussen.dk do not include a statement regarding the above or the condition of the item.
- 2.3 In some cases, BRK may choose to describe an item's provenance. Such a description is made if a former owner is publicly known and/or if the story of previous ownership sheds further light on the item and its background. In other cases, such information is left out of the description, for instance to meet the seller's wish for privacy.
- 2.4 It is possible that the estimate and description are revised prior to the auction. Changes are published on BRK's website.

3 PREVIEW

- 3.1 Items up for auction are presented prior to the auction in one of BRK's showrooms. Potential bidders are encouraged to inspect the items closely and are responsible for determining the condition of the items at these previews, where they also have the opportunity to consult with the valuation experts.
- 3.2 If a potential buyer does not have the opportunity to inspect the item personally, a condition report can be drafted in most cases. The description in this report has been made according to BRK's honest conviction but is not based on scientific studies. A condition report only serves as an identification and is meant as an aid to bidders who do not have the opportunity to inspect the item at the preview.

DURING THE AUCTION

4 THE ROLE OF BRK

- 4.1 The sale of an item is facilitated by BRK on behalf of the seller, and BRK always sells items up for auction at the highest price offered during the bidding round.

- 4.2 Items up for auction can have a reserve price that has been agreed upon with the seller. The price is confidential and the item cannot be sold below this price.
- 4.3 The Live Auctions are presided over by one of the Danish Ministry of Justice's appointed auctioneers, ensuring that the auctions proceed correctly and lawfully.

5 BIDDING

- 5.1 The currency used while the auctions take place is Danish kroner. The approximate amount in euro/US dollars is shown on screens in the saleroom and also on request.
- 5.2 The auctioneer determines the size of the bid increment and the pace of the auction. Bid increments usually rise by 5% - 10% compared to the previous bid. Approximately 50-100 auction lots are sold per hour.
- 5.3 The hammer price refers both to the gavel used by the auctioneer that signifies the end of a bidding round on an item and to the price (bidding amount) that the item up for auction is sold for. See paragraph 7 regarding amounts added to the hammer price.
- 5.4 The buyer is the bidder that submits the highest bid, thereby obtaining the hammer price. At the moment the hammer price is determined, a binding purchase/sale agreement is entered into based on these conditions of purchase.
- 5.5 If bids are made on behalf of others, the bidder serves as surety for the transaction.
- 5.6 Items are purchased in their present state and condition, and regardless of the type of bidding the buyer has no right to cancel his purchase, neither under the Danish Consumer Contracts Act.
- 5.7 Bidders are required, in accordance with BRK's instructions, to identify themselves and document their ability to pay, for instance by registration of a valid debit/credit card, bank guarantee or a deposit.
- 5.8 BRK may refuse to accept a bid if a sufficient guarantee of the bidder's ability to pay is not provided, or if the bidder has previously defaulted on payment obligations on purchases from BRK.
- 5.9 The overseeing auctioneer will, in consultation with the auctioneer at the podium, decide what to do in matters of dispute concerning a bidding round.

6 TYPES OF BIDDING

- 6.1 Bidding options:
 - IN PERSON:**
Registration and obtaining the bidding paddle take place at the entrance to the saleroom. When the bidder wishes to bid, it is signalled to the auctioneer on the podium by raising the bidding paddle in the air and clearly displaying its number.
 - COMMISSION BIDS:**
The intended maximum bid can be submitted via bruun-rasmussen.dk until the start of the auction or by e-mail, fax or phone, so that the bid is received no later than 24 hours prior to the start of the auction. A commission agent bids on behalf of the bidder within the limits of the stated maximum bid. The commission agent will always bid the lowest possible amount to achieve the hammer price.

TELEPHONE BID:

With certain items it is possible to have a BRK employee call the bidder over the phone. The employee will then bid on behalf of the bidder during the auction. The service can be booked via bruun-rasmussen.dk up until three hours before the auction is set to begin.

LIVE BIDDING:

It is possible to follow the auction live and bid on the auction lots via bruun-rasmussen.dk.

PRE-AUCTION:

Some Live Auctions are preceded by an online auction. The highest bids from the online auction then represent the starting bids at the following Live Auction.

AFTER THE AUCTION

7 AMOUNTS ADDED TO THE HAMMER PRICE

- 7.1 In addition to the hammer price, see paragraph 5.3, the buyer pays a buyer's premium for the individual items as well as the other amounts described below if the conditions for these are applicable. The total amount that the buyer pays to BRK is called the "purchase price".
- 7.1.1 Buyer's Premium: The hammer price always includes an additional fee to BRK. At the Live Auctions, the fee is 25,6% of the hammer price + VAT of the fee, 32% in total. For stamps and coins, the fee is 20% of the hammer price + VAT of the fee, a total of 25%.
- 7.1.2 "LIVE Bidding": BRK's "LIVE Bidding" software is free to use for bidders on bruun-rasmussen.dk.
- 7.1.3 Full VAT: Certain items are sold at auction in accordance with the current rules regarding full VAT. In such a situation, a VAT of 25% is imposed on both the hammer price and the buyer's premium. These items are marked in the catalogue and on bruun-rasmussen.dk with the symbol "***", or with the text: "This item is subject to full VAT".
- 7.1.4 Artist's Resale Right: In accordance with Danish copyright law, a royalty fee covering the Artist's Resale Right has to be charged for works by newer Danish artists, and some foreign artists, who are either alive or have not been dead for more than 70 years. The royalty fee covering the Artist's Resale Right is charged on behalf of VISDA (Visual Rights Denmark). These works are marked "ARR" in the printed catalogue, and on bruun-rasmussen.dk the description of the works includes the text: "This lot is subject to the Artist's Resale Right". The royalty fee covering the Artist's Resale Right is added to the hammer price + the buyer's premium (excluding VAT) if the amount exceeds EUR 300, as indicated below:

Hammer price + buyer's premium (ex. VAT)	Payment Rate
300,01 - 50,000 euro	5%
50,000,01 - 200,000 euro	3%
200,000,01 - 350,000 euro	1%
350,000,01 - 500,000 euro	0.5%
over 500,000 euro	0.25%

The royalty fee covering the Artist's Resale Right cannot exceed EUR 12,500 (excluding VAT) for each item. The fee must be paid in Danish kroner, and the conversion rate (EUR/DKK) is set by VISDA.

- 7.1.5 Debit/Credit Card Fee: Amounts Added to the Hammer Price: BRK reserves the right to charge the debit/credit card fees imposed by the payment services companies. The rates will appear when bidding on bruun-rasmussen.dk and at payment.

8 PAYMENT DEADLINE

- 8.1 The purchase price falls due after the hammer price has been determined, and then the buyer has eight days to pay BRK the purchase price.

9 PAYMENT METHODS

- 9.1 The payment can be made in the following ways:
- A: With debit/credit card (Visa, MasterCard, Maestro, Diners Club, China UnionPay and JCB) or cash (up to DKK 14.999) in the saleroom or subsequently at one of

BRK's locations. Please note that we do not accept EUR 500 banknotes.

- B: With debit/credit card (Dankort, Visa, MasterCard, Diners Club and JCB) via BRK's website on the buyer's personal page.
- C: By bank transfer into BRK's account with Danske Bank: 4183 4310970638 · Swift/BIC: DABADKKK · IBAN: DK4130004310970638.

10 VAT EXEMPTION, PAYMENT & DEPOSIT

- 10.1 Some buyers can choose which type of VAT should apply to the transaction. The choice has to be communicated to BRK no later than two working days after the purchase and cannot be changed subsequently.
- A: Businesses in Denmark registered for VAT can decide that the transaction is to be conducted in accordance with the rules for full VAT, see paragraph 7.1.3.
- B: Businesses registered for VAT in another EU Member State can be exempted from paying Danish VAT if it can be proved that the item has been transported to the foreign address that the buyer has registered with BRK and which is written on the invoice. In such cases, the VAT should be settled according to the rules applicable in the country where the buyer is registered for VAT. It is advisable to consult with the local authorities. The buyer can decide not to be exempt from regular VAT and instead pay Danish VAT on second-hand goods/full VAT.
- C: Buyers residing outside the EU can be exempted from Danish VAT if it can be proved that the item has been transported out of the EU. To the extent possible and for a fee, BRK can issue the necessary export documents for the customs authorities. The buyer may decide not to be exempt from regular VAT and instead pay Danish VAT on second-hand goods/full VAT.
- 10.2 Companies registered for VAT in another EU Member State and buyers residing outside the EU must deposit the Danish VAT on the amount invoiced with BRK until the export process has been completed in a documented, lawful fashion. If the export is undertaken by one of BRK's authorized forwarding agents, the VAT does not have to be deposited. See the list of authorized forwarding agents on bruun-rasmussen.dk.

11 OVERDUE PAYMENTS

- 11.1 If payment is made after a deadline, including the deadline specified in paragraph 8, interest on overdue payments will be charged and estimated in accordance with the Danish Central Bank's official lending rate + 8% per year on the amount due.
- 11.2 If the purchase price, including interest, has still not been paid ten days after the demand for payment has been made, BRK is entitled to seek the purchase price paid by making a set-off against the deposit/by drawing on the bank guarantee or to cancel the purchase.
- 11.3 If the purchase is cancelled, BRK is entitled to sell the item at a new auction and demand the costs and any difference between the new and the earlier hammer price (including the buyer's premium) covered by the defaulting buyer.
- 11.4 In addition to debt collection, BRK may seek recovery of all due claims (including costs) not paid in a timely manner in the following ways:
- A: Making the buyer cover the costs of selling items consigned to auction by or on behalf of the buyer. The sale can be conducted without regard to an agreed reserve price. Items consigned for auction cannot be collected as long as overdue debts are unpaid.
- B: Seizing the buyer's remaining balance with BRK, including the balance from the sale of items consigned by or on behalf of the buyer, regardless of whether such receivables derive from auction sales prior to or after the date of the buyer's default on the payment.

12 PICK-UP & COLLECTION

- 12.1 The title to a purchased item passes to the buyer when the full purchase price, including any interest and fees, has been paid, and only then can the collection of an item take place.
- 12.2 In connection with the collection of a purchased item, BRK reserves the right to demand satisfactory documentation that the person who wants to pick up the item is either the buyer himself/herself or authorized by the buyer to receive the item on his/her behalf.
- 12.3 The collection of certain weapons requires presentation of a valid weapons certificate. Items with such requirements are listed with the text: "The purchase of this item requires the presentation of a valid weapons certificate" in the catalogue and on bruun-rasmussen.dk.
- 12.4 Purchased items are stored after the auction at the buyer's expense and risk. Pick-up must take place no later than eight working days after the last auction day.
- 12.5 If the item(s) is/are not picked up on time, the purchased items will be transported to a warehouse at the buyer's risk and expense. The transport costs are DKK 150 including VAT per item and the storage costs are DKK 150 including VAT per item for each week or part of a week. If an item is left unclaimed for an amount of time that results in the storage costs exceeding the value of the item, BRK will be entitled to, at the buyer's expense and risk and without regard to the reserve price, sell the item at an auction or privately. The buyer is still liable for the costs of transportation and storage not covered by such sale.
- 12.6 In accordance with current anti-money laundering laws, the buyer must in certain cases submit personal information and present a photo ID to BRK before the buyer can have the purchased item placed in his possession.

13 SHIPPING

- 13.1 If the buyer is unable to pick up the purchased item, BRK offers to pack and arrange delivery either by mail or by freight forwarder at the buyer's risk and expense. See paragraph 12.2 regarding identification.

14 EXPORT LICENSE

- 14.1 To ensure that Danish cultural heritage of vital importance remains in Denmark, the Danish Cultural Assets Commission can place an export ban on certain items. If the buyer wishes to export an item that is subject to an export ban in Denmark, the purchase will be cancelled and the Danish Cultural Assets Commission is obliged to acquire ownership of the item for the price obtained at auction. The buyer cannot raise any claims against BRK as a result of an export ban.
- 14.2 Certain items are included in the Washington Convention, also known as CITES. The purpose of CITES is to stop the trade of items made with endangered species and flora. If the item is included in the Washington Convention, CITES, Appendix 1, this will appear in the description of the item on bruun-rasmussen.dk and be marked with the symbol "☉" in the catalogue. The following rules are applicable:
- A: Items that are included in the Washington Convention, CITES, Appendix 1, can only be traded when a dispensation in the form of a CITES certificate has been obtained. BRK obtains the required certificate from the Danish Nature Agency that allows trade and export to countries within the EU. Items that were produced before 1947 can, however, be freely traded within the EU without a certificate.
- B: It is only items included in the Washington Convention, CITES, Appendix 1 that are marked individually on bruun-rasmussen.dk and in our catalogue. Items included in the Washington Convention, CITES, Appendix 2, which can be freely sold and transported within the EU, are not individually marked.
- C: Export to countries outside the EU must, regardless of the year of the item's production, always procure a CITES re-export permit from the Danish Nature Agency if the item is included in the Washington Convention, Appendix 1 and 2. This export permit can usually be

obtained without problems, if the item is either sold with a CITES certificate or was made prior to 1947. Appendix 2 items usually also receive a re-export permit without problems. Any fees charged by the Danish authorities in connection with the issuance of a re-export permit will be added to the buyer's invoice.

D: In connection with export to other countries outside the EU, special rules may apply concerning the subsequent import, and the buyer is encouraged to consult the relevant local authorities about this issue.

15 DEFECTS IN THE PURCHASED ITEMS

- 15.1 The lack of conformity rules of the Danish Sale of Goods Act may apply. Below is a non-exhaustive excerpt of the buyer's remedies in regard to lack of conformity.
- 15.2 The buyer is entitled to cancel a purchase if the description contained significant errors that have led to a higher hammer price than a correct description would have resulted in. In such cases, the total purchase price will be refunded. The buyer cannot demand payment of interest on the purchase price or demand payment of any other expenses or losses.
- 15.3 A purchase cannot be cancelled and the buyer cannot demand a refund of the purchase price or raise any other claims against BRK if the description of the item is in compliance with paragraph 2. The same applies if evidence of forgery has required the use of scientific methods that were either not available at the time of sale, were excessively costly to use or led to the damage of the item in question.
- 15.4 Claims for a cancellation of a purchase must be notified to BRK when the buyer has discovered the fact that entitles the buyer to cancel the purchase. This notice, however, has to be given no later than two years after the final pick-up date according to paragraph 12.4. The item purchased must be returned to BRK in the same condition as it was on the day it was sold at auction. If these conditions are not met, the buyer loses the right to cancel the purchase and cannot claim a refund of the purchase price. The buyer is responsible for paying the costs associated with the return of the item.

16 OBJECTIONS & LIMITATIONS OF LIABILITY

- 16.1 BRK is aware that errors, technical difficulties and external abuse or disruptive influences may occur during the auction. Bidders cannot raise any claims against BRK as a result of such events.
- 16.2 The buyer is always responsible for the correct payment of VAT and other costs, fees etc. in accordance with Danish and foreign regulations.
- 16.3 Unless otherwise stated in these conditions of purchase, BRK may never be held liable for bidders'/buyers' operating loss, loss of profits, other indirect losses or consequential loss.

17 PRIVACY POLICY

- 17.1 It is important to BRK to ensure confidentiality and security regarding the bidder's/buyer's personal information. The privacy policy can be found on bruun-rasmussen.dk.

18 COMPLAINTS, DISPUTE RESOLUTION AND APPLICABLE LAW

- 18.1 BRK can always be contacted if the bidder/buyer has a complaint.
- 18.2 If the dispute cannot be resolved, the consumer can submit a complaint to the Complaint Resolution Centre, Nævnenes Hus, Toldboden 2, 8800 Viborg, Denmark, email: naevne-neshus.dk. Consumers residing in another EU country than Denmark can submit their complaint to the European Commission's Online Dispute Resolution platform via the website: <http://ec.europa.eu/odr>.
- 18.3 In Denmark, disputes must be brought before the City Court of Copenhagen, but see paragraphs 18.2. The mandatory rules on jurisdiction apply to consumer interests.

Bruun Rasmussen Auctioneers

The above is an English translation of the Danish version of the Conditions of Purchase. In case of a dispute, only the Danish version of the present Conditions of Purchase of Bruun Rasmussen is valid.

ADDRESSES

BRUUN RASMUSSEN AUCTIONEERS

LYNGBY

NØRGAARDSVEJ 3, 2800 KONGENS LYNGBY

+45 8818 1111 / info@bruun-rasmussen.dk

GLOSTRUP

PAUL BERGSØES VEJ 20B, DK-2600 GLOSTRUP

+45 8818 1111 / info@bruun-rasmussen.dk

AARHUS

SØREN FRICHS VEJ 34D, DK-8230 ÅBYHØJ

+45 8818 1100 / aarhus@bruun-rasmussen.dk

JYLLAND AND FYN

PETER BECK

+45 8818 1186 / pb@bruun-rasmussen.dk

NICK MESSMANN

+45 8818 1232 / nic@bruun-rasmussen.dk

ESBEN SKOV JENSEN

+45 8818 1199 / ej@bruun-rasmussen.dk

REPRESENTATIVES

FRANCE AND BELGIUM

DITTE HERBORG KROGH · PARIS

+33 6 6185 4564 / dhk@bruun-rasmussen.dk

GERMANY

NICK MESSMANN

+45 8818 1232 / nic@bruun-rasmussen.dk

CONTACT DIRECTLY

KONTAKT DIREKTE

MAIN NUMBER

Bruun Rasmussen Auctioneers +45 8818 1111

CUSTOMER SERVICE

kundeservice@bruun-rasmussen.dk +45 8818 1010

customerservice@bruun-rasmussen.dk +45 8818 1010

COMMISSIONS

Lise Winther Wobido +45 8818 1013

Anja Bering Hansen +45 8818 1028
bids@bruun-rasmussen.dk

CATALOGUE REQUESTS

Kundeservice / Customer service +45 8818 1111

AUCTION GUIDANCE

Franziska Kampmann +45 8818 1026
fka@bruun-rasmussen.dk

SHIPPING

shipping@bruun-rasmussen.dk +45 8818 1055

VALUATION AND INFORMATION

VALUATION AT YOUR HOME

Henrik Schleppegrel +45 8818 1145
hsc@bruun-rasmussen.dk

Liselotte Toxværd Møller +45 8818 1234
ltm@bruun-rasmussen.dk

DECORATIVE ART, FURNITURE AND CARPETS

Ralph Lexner +45 8818 1161
rl@bruun-rasmussen.dk

CARPETS

Henrik Schleppegrell +45 8818 1145
hsc@bruun-rasmussen.dk

FURNITURE

Anders Fredsted +45 8818 1142
afr@bruun-rasmussen.dk

PORCELAIN

Line Hjorth Langkjær +45 8818 1166
lla@bruun-rasmussen.dk

SILVER

Martin Hans Borg +45 8818 1128
mhb@bruun-rasmussen.dk

ASIAN ART AND ANTIQUITIES

Alexandra Nilsson +45 8818 1164
ani@bruun-rasmussen.dk

RUSSIAN ART

Martin Hans Borg +45 8818 1128
mhb@bruun-rasmussen.dk

19TH CENTURY AND OLD MASTER PAINTINGS

Julie Arendse Voss +45 8818 1123
jav@bruun-rasmussen.dk

Birte Stokholm +45 8818 1122
bst@bruun-rasmussen.dk

Søren Kjerk Holmstrup +45 8818 11 27
skh@bruun-rasmussen

Sofie Normann Christensen +45 8818 11 25
snc@bruun-rasmussen

MODERN AND CONTEMPORARY ART

Niels Boe-Hauggaard +45 8818 1182
nbh@bruun-rasmussen.dk

Niels Raben +45 8818 1181
nr@bruun-rasmussen.dk

MODERN DESIGN

Anna Widenborg +45 8818 1187
awi@bruun-rasmussen.dk

MODERN DECORATIVE ART

Amalie Hansen +45 8818 1194
amh@bruun-rasmussen.dk

THE ART OF LUXURY

Daniel Foldschack +45 8818 1174
dfo@bruun-rasmussen.dk

FASHION

Emma Marie Huus-Thomsen +45 8818 1179
eht@bruun-rasmussen.dk

JEWELLERY

Eva Dybkjær +45 8818 1227
evd@bruun-rasmussen.dk

Rie Kertsch Dalager +45 8818 11 75
rkd@bruun-rasmussen

WRISTWATCHES

Frederik Plum +45 8818 1168
fp@bruun-rasmussen.dk

WINE

Thomas Rosendahl Andersen +45 8818 1206
tra@bruun-rasmussen.dk

COINS

Michael Märcher +45 8818 1202
mm@bruun-rasmussen.dk

STAMPS

Torben Ringtved +45 8818 1225
tr@bruun-rasmussen.dk

ARMS, ARMOUR AND SPORTING GUNS

Ralph Lexner +45 8818 1161
rl@bruun-rasmussen.dk

COMMISSION BIDS

KOMMISSIONSBUD

It is possible to leave commission bids if you can not be present at the auction yourself. This service is free of charge.

When leaving a commission bid, you are instructing our customer service to bid up to a specified amount on your behalf.

The situation can occur that another buyer has already bid the same as you were prepared to. Are you then willing to bid further? If not the lot will be sold to another buyer.

If you do not wish to exceed your bid then write "Max", for maximum, next to the amount. You can also allow us to raise your bid by approx. 15% or approx. 25%.

The hammer price may be higher or lower than the estimated price, so it is possible to buy below the estimate. Bruun Rasmussen will always buy at the lowest price possible, as if you yourself had been present at the auction.

All commission bids are strictly confidential.

Commission bids must be submitted no later than **24 hours** prior to the start of the auction.

HOW TO MAKE A COMMISSION BID:

Complete the commission form with all pertinent information.

Indicate the lot number.

Indicate the amount you are prepared to bid.

Should this amount be the absolute maximum, please write "Max" in the appropriate column.

You can also allow us to bid by up to approx. 15% or approx. 25% more by indicating so.

Sign the commission form and make sure that Bruun Rasmussen receives it **24 hours** prior to the start of the auction.

If the information should be insufficient, Bruun Rasmussen can abstain from bidding. Bruun Rasmussen can not be held responsible for error in bidding or failure to execute bids.

INTERNET:

Commission bids can be submitted via website bruun-rasmussen.dk directly from the page with the item you want to submit a bid for.

Deadline for submissions of bids via the website is **3 hours** prior to the start of the auction.

Submitted bids are shown under "Your bids" when you are logged in. Please contact technical support on +45 8818 1114 for questions about the registration and submission of bids on the website.

For additional information, please consult "Conditions of Purchase" §1.

TELEPHONE BIDDING:

Should you wish to bid at auction by telephone, please inform Bruun Rasmussen of your name and telephone number, as well as which catalogue numbers you are interested in, no later than **3 hours** prior to the start of the auction. You will then be contacted shortly before the relevant lot comes under the hammer, thereby allowing you to participate without being in the auction room yourself.

For additional information, please consult "Conditions of Purchase" §1.

Det er muligt at afgive kommissionsbud, hvis De ikke selv kan være til stede på auktionens dag. Denne service er gratis.

Når De afgiver en kommission, beder De vores kundeservice på Deres vegne byde op til et af Dem bestemt beløb i hammerslag.

Der kan opstå den situation, at en anden køber allerede har budt det beløb, som De ønsker at afgive. Er De da villig til at gå et bud højere eller er De indforstået med at nummeret sælges til anden side?

Ønsker De ikke at byde højere så skriv "Max" ud for beløbet. Er De i tvivl om hvor højt De vil byde, kan De hæve budet med op til ca. 15% eller ca. 25%.

Salgsprisen kan blive højere eller lavere end vurderingen, så der er også mulighed for at købe til under den angivne vurdering. Vor kundeservice køber altid så billigt som muligt til Dem, som havde De selv været tilstede på auktionen.

Alle kommissioner behandles strengt fortroligt.

Kommissionsbud skal være Bruun Rasmussen i hænde senest **24 timer** før auktionens start.

SÅDAN BYDER DE:

Udfyld blanketten kommissionsbud med alle oplysninger.

Angiv katalognummer.

Angiv beløbet De ønsker at byde.

Er dette Deres absolutte maximum bedes De anføre "Max" i kolonnen.

De kan også forhøje Deres bud med henholdsvis ca. 15% eller ca. 25%, ved at indikere dette i kolonnen.

De bedes underskrive kommissionsblanketten og sikre Dem, at Bruun Rasmussen modtager den senest **24 timer** før auktionens start.

Hvis Deres oplysninger ikke er tilstrækkelige, kan Bruun Rasmussen undlade at byde for Dem, ligesom Bruun Rasmussen ikke kan gøres ansvarlig for fejl ved budgivning.

INTERNET:

Kommissionsbud kan afgives på hjemmesiden bruun-rasmussen.dk direkte fra siden med den effekt, De ønsker at byde på.

Seneste afgivelse af bud via hjemmesiden er **3 timer** før auktionens start.

Afgivne bud kan ses på hjemmesiden under "Deres bud", når de er logget ind. Kontakt teknisk support på 8818 1114 for spørgsmål om registrering og budgivning via internettet.

For yderligere information, se "Købskonditioner", §1.

TELEFONBUD:

Såfremt De ønsker at byde pr. telefon, bedes De oplyse Bruun Rasmussen Deres navn og telefonnummer samt hvilke katalognumre, De ønsker at byde på, senest **3 timer** før auktionens start. De vil så blive ringet op kort før, den aktuelle vare kommer under hammeren, og De kan på denne måde deltage i auktionen uden selv at være til stede.

For yderligere information, se "Købskonditioner" på bruun-rasmussen.dk under "Guide".

Ret til ændringer forbeholdes © 2024 Bruun Rasmussen Kunstauktioner
Foto: Peter Grosen, Henrik Wichmann & Peter Madsen. Tryk: Cool Gray
Grafik og dtp: Jorge Figueiredo

COMMISSION BIDS

KOMMISSIONSBUD

Skal være Bruun Rasmussen i hænde senest **24 timer** før auktionens start.

Must be submitted no later than 24 hours prior to the start of the auction.

AUKTION NR AUKTION NO: **921**

Navn *Name*: *

Adresse *Address*: *

Postnr./by *City*: *

Land *Country*: * Fax:

Tel: *

e-mail: CVR-nr. *VAT No.*:

Bank: Konto nr. *Acct. No.*:

Adresse *Address*:

Postnr./By *City*: Land *Country*:

Tel: Kontaktperson *Contact*:

Obligatoriske felter er mærket med en stjerne * *Mandatory fields are marked with an asterisk **

Undertegnede giver hermed fuldmagt til Bruun Rasmussen Kunstauktioner A/S om på mine vegne at købe nedennævnte katalognumre så fordelagtigt som muligt, inden for det af mig anførte beløb, i hammerslag.
I hereby request that Bruun Rasmussen bid on my behalf on the following lots up at the prices indicated below.

Undertegnede har udfyldt ovennævnte med de ønskede oplysninger, samt har accepteret købskonditionerne.
The undersigned has supplied the required information and agrees to be bound by the conditions of purchase.

Signatur: * B.R. kunde-nr. *Client No.*:

Jeg ønsker at modtage salgsresultater på de emner jeg har budt på via email dagligt efter auktion
 I wish to receive sales results on the items I have been bidding on via e-mail *every day* *after the auction*

på e-mail adressen *on this e-mail address*:

Katalog nr. Lot. No.	Beskrivelse Description	Bud kr. Bid DKK	Max	+15%	+25%

BRUUN RASMUSSEN KUNSTAUKTIONER A/S

Norgaardsvej 3 · DK-2800 Kongens Lyngby · Tel +45 8818 1111 · bids@bruun-rasmussen.dk · bruun-rasmussen.dk



THE ART OF LUXURY

