

DESIGN



BRUUN RASMUSSEN
PART OF THE BONHAMS NETWORK



Want to receive our newsletter?

This way you can stay abreast of events at Bruun Rasmussen's auction house:

- *Upcoming auctions and the highlights set to go under the hammer*
- *Invitations to exhibitions, events and exciting talks*
- *You can also learn more about the art, design classics and antiques*

> [Subscribe here](#)

DESIGN



LIVE AUCTION 921

Thursday 13 June 4 pm

PREVIEW

Thursday 6 June 11 am - 6 pm

Friday 7 June 11 am - 5 pm

Saturday 8 June 10 am - 4 pm

Sunday 9 June 10 am - 4 pm

or by appointment

BRUUN RASMUSSEN

PART OF THE BONHAMS NETWORK

Nørgaardsvej 3 · DK-2800 Lyngby · Tel +45 8818 1111

info@bruun-rasmussen.dk · bruun-rasmussen.com



Join Exciting Talks During the Preview!

Thursday 6 June 11 am–6 pm

11 am Opening of Preview

3–6 pm Bubbly and Music

4 pm Talk: “Skagen Seen With New Eyes”

by cultural critic and author Lilian Munk Rösing, based on art works from the “Northern Light – the Artists’ Colony at Skagen” Auction.

Friday 7 June 11 am–5 pm

3 pm Talk: “Antique Silver on the Dinner Table”

by specialist in antique silver and royal collectibles Martin Hans Borg.

Saturday 8 June 10 am–4 pm

1 pm Talk: “Pocket Watches – Why Collect Them, and What Directions Can You Go in as a Collector?”

by master watchmakers Rune Bakkendorff and Søren Andersen in conversation with our watch specialist Frederik Plum.

2 pm Talk: “Danish Friendship Portraits from Rome”

by art dealer Peter Titelbech about Circolo Scandinavo’s collection of more than 70 portraits by Danish and Nordic artists who, from the early 1800s and up to around 1880, were drawn to Italy and not least the capital Rome.

Freshly ground coffee will be served by Oliver from Amiga Coffee on all the days.

DAYS OF SALE

Monday	10 June		
	4 pm	Fine art	1 - 119
	7 pm	Northern Light - the Artists’ Colony at Skagen	121 - 191
Tuesday	11 June		
	1 pm	Asian art	192 - 257
	3 pm	Antiques - decorative art, furniture and carpets	258 - 358
	5 pm	Modern paintings and sculptures	359 - 526
		Prints	527 - 544
Wednesday	12 June - The Art of Luxury		
	3 pm	Handbags	561 - 591
		Jewellery	592 - 764
	7 pm	Wristwatches	765 - 826
Thursday	13 June		
	4 pm	Modern decorative art	827 - 866
		Design	867 - 1005
	6 pm	Fine spirits - Online Auction at bruun-rasmussen.dk	
	8 pm	Champagne - Online Auction at bruun-rasmussen.dk	

IMPORTANT INFORMATION ABOUT BIDDING AT THE AUCTION

Bonhams’ international customers can also bid at selected Bruun Rasmussen Live Auctions via Bonhams’ website: bonhams.com

DEADLINE FOR CLAIMING ITEMS: WEDNESDAY 26 JUNE

Items bought at this auction must be paid no later than eight days from the date of the invoice and claimed at Nørgaardsvej 3 in Lyngby by Wednesday 26 June at the latest. Otherwise, they will be moved to Bruun Rasmussen’s storage facility at Paul Bergsøes Vej 16 in Glostrup at the buyer’s expense and risk. Here, they can be picked up from Friday 28 June. This transportation will cost DKK 150 per item VAT included, and storage will cost DKK 150 per item per week VAT included.

SPECIALISTS IN DECORATIVE ART AND DESIGN



*Head of Department of Modern
Decorative Art and Design*
Anna Berger Widenborg
+45 8818 1187
awi@bruun-rasmussen.dk



Design
Andreas Krabbe
+45 8818 1193
ank@bruun-rasmussen.dk



Design
Poul Svalgaard Henriksen
+45 8818 1132
psh@bruun-rasmussen.dk



Design
Anders Bodholt Askman
+45 8818 1198
aba@bruun-rasmussen.dk



Decorative Art
Amalie Hansen
+45 8818 1194
amh@bruun-rasmussen.dk



Decorative Art and Design
Klara Johansdotter Hagberg
+45 8818 1236
kjh@bruun-rasmussen.dk



Paintings and Design
Peter Beck – Aarhus
+45 8818 1186
pb@bruun-rasmussen.dk



Director of Valuations and Sales
Kasper Nielsen
+45 8818 1121
kn@bruun-rasmussen.dk



Representative France + Belgium
Ditte Herborg Krogh
+33 6 6185 4564
dhk@bruun-rasmussen.dk



Global Head of Modern Decorative Art and Design
– Bonhams / USA
Benjamin Walker
+1 212 710 1306
benjamin.walker@bonhams.com



International Specialist, Europe
– Bonhams / Netherlands
Marcel Brouwer
+31 (0)6 547 05 086
marcel.brouwer@bonhams.com

MODERN DECORATIVE ART

Thursday 13 June 4 pm

Lot 827 - 866





827
SIGVARD BERNADOTTE

b. 1907, d. 2002

A sterling silver ice bucket with engraved relief decor and matching ice tongs. Georg Jensen 1945-1977. Ice bucket design no. 819 D. Designed 1937. Total weight 570 g. Ice bucket: H. incl. handle 21 cm. W. incl. handle's mounting 14 cm. Diam. 12 cm. Ice tongs: L. 14.2 cm. (2)

Literature: Janet Drucker: "Georg Jensen - A Tradition of Splendid Silver", ill. p. 243.

Literature: David A. Taylor & Jason W. Laskey: "Georg Jensen Holloware - The Silver Fund Collection", ill. p. 268.

DKK 40,000 / € 5,350

827

828
SIGVARD BERNADOTTE

b. 1907, d. 2002

A circular sterling silver cocktail tray with engraved relief decor. Georg Jensen 1945-1951. Design no. 819. Designed 1937. Weight 650 g. H. 1.2 cm. Diam. 26.5 cm.

DKK 20,000 / € 2,700



828

829
SIGVARD BERNADOTTE

b. 1907, d. 2002

A sterling silver cocktail pitcher with engraved relief decor. Georg Jensen 1945-1977. Design no. 819. Designed 1937. Weight 532 g. H. 16.7 cm. W. 17.5 cm.

Literature: Lise Funder: "Dansk Sølv i det 20. århundrede", ill. p. 100.

Literature: David A. Taylor & Jason W. Laskey, "Georg Jensen Holloware - The Silver Fund Collection", ill. p. 268.

DKK 35,000 / € 4,700



829



830

830
SIGVARD BERNADOTTE

b. 1907, d. 2002

A pair of sterling silver candlesticks with grooved stem. Georg Jensen 1945-1977. Design no. 855 E. Designed 1938. Total weight 585 g. H. 18 cm. Inner diam. of candle holder 2.2 cm. (2)

Provenance: British Actor and writer Sir Peter Ustinov.

Literature: David A. Taylor & Jason W. Laskey: "Georg Jensen Holloware - The Silver Fund Collection", ill. p. 275.

DKK 30,000 / € 4,000

831
SIGVARD BERNADOTTE

b. 1907, d. 2002

A pair of sterling silver candlesticks with grooved stem. Georg Jensen 1945-1977. Design no. 855 E. Designed 1938. Total weight 568 g. H. 18 and 18.2 cm. Inner diam. of candle holder 2.2 cm. (2)

Provenance: British Actor and writer Sir Peter Ustinov.

Literature: David A. Taylor & Jason W. Laskey: "Georg Jensen Holloware - The Silver Fund Collection", ill. p. 275.

DKK 30,000 / € 4,000



831



832
HARALD NIELSEN

b. Baarse 1892, d. 1977

"Pyramid". A sterling silver and silver cutlery set. Georg Jensen 1926-1930, 1929-1932, 1933-1944, 1945-1951 and after 1945. Designed 1926. Weight excluding pieces with steel 3310 g. (101)

Comprising:

- 12 dinner knives with short handle L. 22.5 cm.,
- 7 dinner forks L. 19.2 cm.,
- 6 dinner forks L. 18.2 cm.
- 6 large dinner spoons L. 19.5 cm.
- 1 dinner spoon L. 18.5 cm.
- 10 luncheon knives with short handle L. 19.7 cm.
- 1 luncheon knife with long handle L. 20.5 cm.
- 12 luncheon forks L. 16 cm.
- 10 dessert spoons L. 16.5 cm.
- 12 pastry forks L. 14 cm.
- 1 fruit knife L. 16.4 cm.
- 2 teaspoons L. 11.8 cm.
- 10 coffee spoons L. 10.7 cm.
- 1 salad set with steel L. 18.7 cm.
- 1 sardine fork L. 13.4 cm.
- 1 cold cut fork L. 14 cm.
- 1 bottle opener with long handle L. 16 cm.
- 1 fried egg server L. 19.5 cm.
- 1 pie knife L. 25.2 cm.
- 2 compote spoons L. 13.7 cm.
- 1 small server with steel L. 15.7 cm.
- 1 sauce ladle L. 18 cm.
- 1 steak fork L. 20 cm.

DKK 25,000-30,000 / € 3,350-4,000

832

833
HARALD NIELSEN

b. Baarse 1892, d. 1977

A set of six sterling silver white wine goblets with hammered surface. Openwork stem with bead decor. Georg Jensen 1945-1977. Design no. 532 A. Designed 1928. Total weight 1009 g. H. 14.3 cm. (6)

Literature: David A. Taylor & Jason Laskey: "Georg Jensen Holloware - The Silver Fund Collection", ill. p. 195.

DKK 30,000 / € 4,000



833



834

834
KAY FISKER

b. Frederiksberg 1893, d. København 1965

A sterling silver water pitcher. Made and marked by A. Michelsen, Kay Fisker 1L. With dating code V9=1971. Designed 1928. Weight 649 g. H. 24 cm.

Literature: Lise Funder: "Dansk Sølv i det 20. århundrede", ill. p. 93.

Literature: Malene Dybbøl & Sabrina Ulrich-Vinther: "Hofjuveler A. Michelsen, Fra stilkopi til arkitektsølv", ill. p. 105.

DKK 20,000 / € 2,700

835 *
HARALD NIELSEN

b. Baarse 1892, d. 1977

A circular sterling silver fruit dish with lightly hammered surface and two scroll-handles. Georg Jensen 1945-1977. Design no. 752 B. Designed 1935. Weight 1934 g. H. incl. handle. 9.2 cm. Diam. 30 cm. L. 34.4 cm.

Provenance: Danske Bank.

Literature: Janet Drucker: "Georg Jensen - A Tradition of Splendid Silver", ill. p. 214.

Literature: "Harald Nielsen - Et tilbageblik på en kunstners arbejde ved 60-årsdagen", ill. pp. 24-25.

DKK 40,000-50,000 / € 5,350-6,700



835



836

836
JOHAN ROHDE

b. Randers 1856, d. Hellerup 1935

A pair of five-branch sterling silver candelabra. Edged bases and stems, center with stylized cone decor. Georg Jensen 1945-1951. Design no. 474. Total weight 4006 g. H. 42.8-43 cm. Diam. approx. 25 cm. The inner diam. of candle holder 2.4 cm. (2)

Litterature: Janet Drucker: "Georg Jensen - A Tradition of Splendid Silver", ill. p. 236.

Litterature: David A. Taylor & Jason W. Laskey: "Georg Jensen Holloware", The Silver Fund Collection, ill. p. 181.

DKK 120,000-150,000 / € 16,000-20,000



837
JOHAN ROHDE

b. Randers 1856, d. Hellerup 1935

"Acorn"/"Kongemønster". A large sterling silver cutlery set. Georg Jensen 1915-1927, 1933-1944, 1945-1951 and after 1945. Designed 1915. Weight excluding pieces with steel 5407 g. (172)

Comprising:

- 12 fish knives L. 20.7 cm.
- 12 dinner knives with long handle L. 22.7 cm.
- 12 dinner forks L. 18.8 cm.
- 12 dinner spoons L. 19.1 cm.
- 12 luncheon knives with long handle L. 20.4 cm.
- 12 luncheon forks L. 16.6 cm.
- 12 dessert spoons L. 17.4 cm.
- 12 pastry forks L. 14 cm.
- 13 coffee spoons L. 11.2 cm.
- 8 fruit knives L. 17 cm.
- 1 small fruit knife with leather case L. 11.5 cm.
- 8 butter knives L. 15 cm.
- 1 hors d'oeuvre fork with three prongs L. 15.3 cm.
- 1 hors d'oeuvre fork with two prongs L. 15.5 cm.
- 1 hors d'oeuvre fork with five prongs L. 14.5 cm.
- 5 long cold cuts forks L. 16.7 cm.
- 1 short cold cut fork L. 11.7 cm.
- 2 herring fork L. 15.8 cm.
- 1 sardine knife L. 17 cm.
- 1 cheese plane L. 21 cm.
- 3 bottle openers with long handle L. 16 cm.
- 1 bottle opener with short handle L. 11.5 cm.

- 1 small bottle opener L. 8 cm.
- 1 canapé server L. 14 cm.
- 1 sugar shovel L. 14 cm.
- 1 olive spoon L. 15 cm.
- 1 marmalade spoon L. 14.8 cm.
- 1 pie knife L. 26.6.
- 1 large pie server L. 26.5 cm.
- 1 pie server with steel L. 23 cm.
- 1 small server with steel L. 16 cm.
- 1 paper knife L. 15.5 cm.
- 1 salad set with steel L. 23.5 cm.
- 1 small salad set with steel L. 15.5 cm.
- 2 compote spoons L. 16.6 cm.
- 2 potato spoons L. 20 cm.
- 1 large serving spoon L. 24 cm.
- 1 vegetable spoon L. 22.5 cm.
- 1 vegetable fork L. 22.5 cm.
- 1 vegetable fork L. 24 cm.
- 1 grape scissors L. 14.2 cm.
- 2 sauce ladles L. 19 cm.
- 2 steak forks L. 20 cm.
- 2 salt spoons L. 6 cm.
- 2 salt spoons L. 8.3 cm. DKK 40,000 / € 5,350

837



838

838
GEORG JENSEN

b. Rådvald 1866, d. Hellerup 1935

A sterling silver tazza with hammered surface. The stem's upper part with openwork grape- and foliage decor. Edged and curved base. Georg Jensen 1933-1944. Design no. 570 B. Weight 1230 g. H. 27.7-28.3 cm. Diam. 26,6 cm.

DKK 40,000-50,000 / € 5,350-6,700

839
JOHAN ROHDE

b. Randers 1856, d. Hellerup 1935

A pair of hammered sterling silver candlesticks. Beaded relief decor and edged stem and base. Georg Jensen 1945-1977. Design no. 286. Designed 1919. Total weight 1283 g. H. 23 and 22.8 cm. Inner diam. of candle holder 2 cm. (2)

Literature: David A. Taylor & Jason W. Laskey: "Georg Jensen Holloware - The Silver Fund Collection", ill. p. 127.

Literature: Janet Drucker: "Georg Jensen - A Tradition of Splendid Silver", ill. p. 235.

DKK 40,000-50,000 / € 5,350-6,700



839

840

JOHAN ROHDE

b. Randers 1856, d. Hellerup 1935

"Acorn"/"Kongemønster". A sterling silver cutlery set. Georg Jensen 1915-1927, 1933-1944 and after 1945. Designed 1915. Weight excluding pieces with steel 2716 g. (95)

Comprising:

- 6 dinner knives with long handle L. 22.6 cm.
- 9 dinner forks L. 18.7 cm.
- 6 dinner spoons L. 19 cm.
- 6 luncheon knives with long handle L. 20.4 cm.
- 6 luncheon forks L. 16,7 cm.
- 4 dessert spoons L. 17.2 cm.
- 1 ice cream spoon L. 14.3 cm.
- 4 bouillon spoons L. 13 cm.
- 22 coffee spoons L. 11 cm.
- 2 teaspoons L. 14.5 cm.
- 6 large teaspoons L. 15.5 cm.
- 6 gilded mocha spoons L. 9.7 cm.
- 10 pastry forks L. 14.2 cm.
- 2 butter knives L. 15 cm.
- 1 cold cut fork L. 16.7 cm.
- 1 sugar spoon L. 10.2 cm.
- 1 cream ladle L. 14 cm.
- 1 small server with steel L. 16 cm.
- 1 potato spoon L. 20 cm.

DKK 25,000-30,000 / € 3,350-4,000



840

841

JOHAN ROHDE

b. Randers 1856, d. Hellerup 1935

A pair of sterling silver candlesticks with slightly hammered surface. Beaded relief decor and edged stem and base. Georg Jensen 1945-1951. Design no. 453. Designed 1919. Total weight 640 g. H. 15.3 cm. Inner diam. of candle holder 2.4 cm. (2)

Literature: David A. Taylor & Jason W. Laskey: "Holloware - The Silver Fund Collection", ill. p. 175.

DKK 20,000-25,000 / € 2,700-3,350



841

842

GEORG JENSEN

b. Rådvaad 1866, d. Hellerup 1935

A sterling silver grape tazza with hammered surface. Spiral fluted stem and circular base. Georg Jensen 1945-1977. Design no. 263 B. Designed 1918. Weight 613 g. H. 18.7 cm. Diam. 18.3 cm. DKK 20,000 / € 2,700



842

843

JOHAN ROHDE

b. Randers 1856, d. Hellerup 1935

"Acorn"/"Kongemønster". A sterling silver and silver cutlery set. Georg Jensen 1915-1927, 1929-1934, 1933-1944, 1945-1951 and after 1945. Designed 1915. Weight excluding pieces with steel 3911 g. (111)

Comprising:

- 11 lobster forks L. 19 cm.
- 12 dinner knives with long handle L. 22.7 cm.
- 12 large dinner forks L. 20 cm.
- 12 dinner forks L. 18.7 cm.
- 12 dinner spoons L. 19 cm.
- 12 luncheon knives with long handle L. 20.2 cm.
- 12 pastry forks L. 14.2 cm.
- 12 coffee spoons L. 11.2 cm.
- 1 baby spoon L. 9.5 cm.
- 1 pie knife L. 26.5 cm.
- 2 cold cut forks L. 16.5 cm.
- 1 nut cracker L. 15.5 cm.
- 1 ice tongs L. 14.5 cm.
- 2 bottle openers with long handle L. 16 cm.
- 2 vegetable spoons L. 22.5 cm.
- 2 potato spoons L. 20 cm.
- 2 sauce ladles L. 19 cm.
- 2 steak forks L. 20 cm.

DKK 30,000 / € 4,000



843

844
AXEL SALTO

b. Copenhagen 1889, d. Frederiksberg 1961

A stoneware vase modelled in sprouting style. Decorated with Sung glaze. Signed Salto, 20701. Royal Copenhagen. Made 1985-1991. Designed 1944. H. 19 cm. Diam. 12.5 cm.

Literature: "Axel Salto - Master of Stoneware", CLAY - Museum of Ceramic Art Denmark. III. in model register fig. 206, p. 176.

DKK 30,000-40,000 / € 4,000-5,350



844

845
AXEL SALTO

b. Copenhagen 1889, d. Frederiksberg 1961

A round stoneware vase modelled in budded style. Decorated with Dilou glaze, the lower part of the vase with reddish brown, metallic glaze. Signed Salto, 20708. Royal Copenhagen. Made 1954. Designed 1944. H. 18.5 cm. Diam. 13 cm.

Literature: "Axel Salto - Master of Stoneware", CLAY - Museum of Ceramic Art Denmark. III. in model register fig. 213, p. 177.

DKK 40,000 / € 5,350



845



846

846^{ARR}
AXEL SALTO

b. Copenhagen 1889, d. Frederiksberg 1961

A round stoneware vase modelled with vertical fluted relief decor. Decorated with reddish brown glaze with brownish green, sand coloured and a few blue elements. Signed Salto, 1930. Made and marked by Københavns Stentøjsbrænderi. Designed 1930. H. 18.5 cm.

Literature: "Axel Salto - Master of Stoneware", CLAY - Museum of Ceramic Art Denmark. III. in model register fig. 51, p. 168.

DKK 20,000 / € 2,700



847

847
AXEL SALTO

b. Copenhagen 1889, d. Frederiksberg 1961

A cylindrical stoneware vase modelled in budded style. Decorated with Solfatara glaze. Signed Salto, 20670. Royal Copenhagen. Made 1968. Designed 1944. H. 20.3 cm. Diam. approx. 9.4 cm.

Literature: "Axel Salto - Master of Stoneware", CLAY - Museum of Ceramic Art Denmark. III. in model register fig. 175, p. 175.

DKK 30,000-40,000 / € 4,000-5,350



848

848

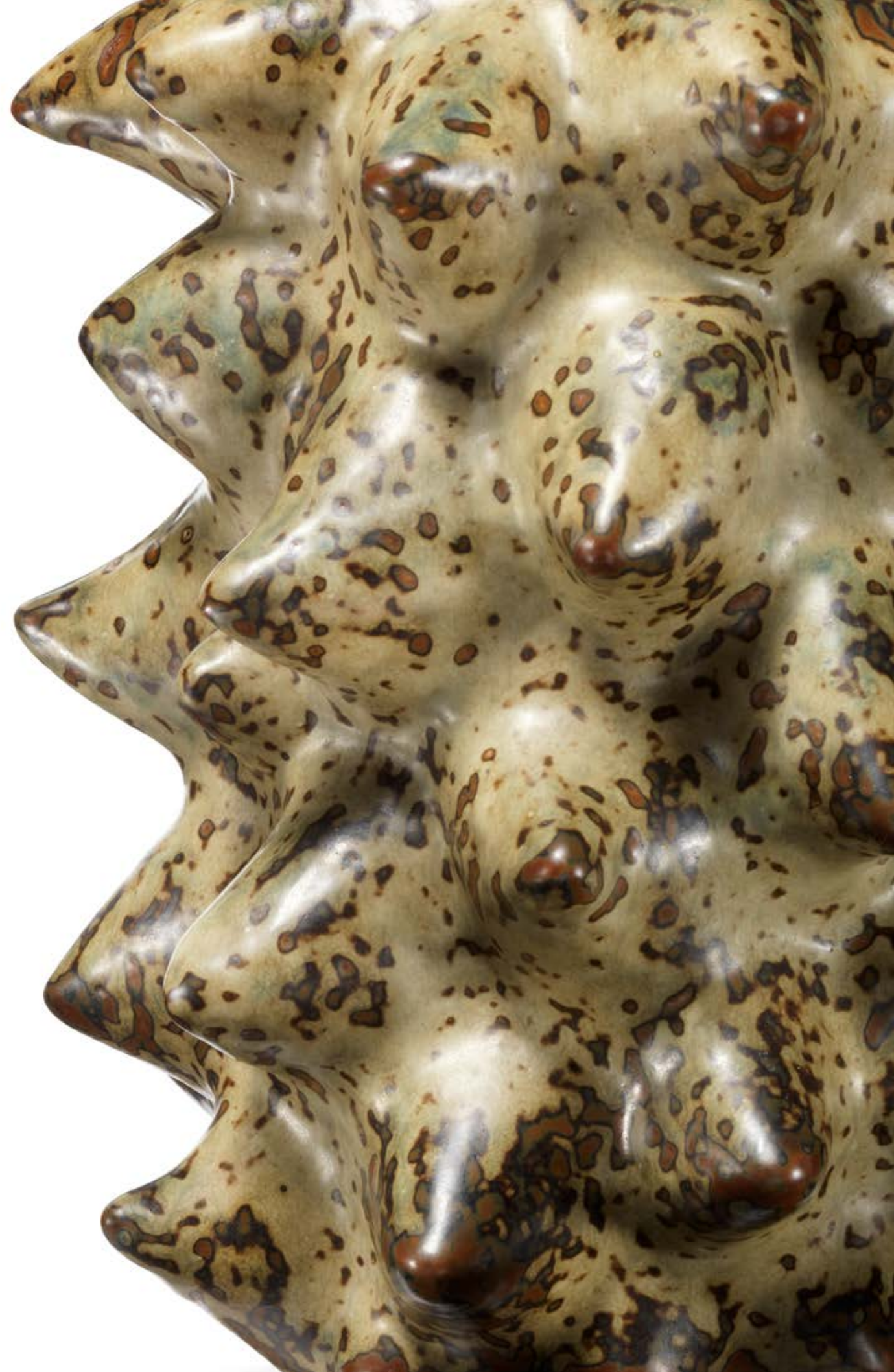
AXEL SALTO

b. Copenhagen 1889, d. Frederiksberg 1961

A stoneware vase modelled in sprouting style. Decorated with Sung glaze. Signed Salto, 20810. Royal Copenhagen. Made 1954. Designed 1946. H. 24.7 cm. Diam. max. 19.5 cm.

Literature: "Axel Salto - Master of Stoneware", CLAY - Museum of Ceramic Art Denmark, ill. in model register fig. 264, p. 179.

DKK 150,000–200,000 / € 20,000–27,000





849

849 * ARR

RUT BRYK

b. 1916, d. 1999

A ceramic wall relief cast in the shape of a house with embossed relief decor. Partly decorated with transparent green, blue and light pink glaze. Signed Bryk. Made by Arabia, Finland. Not marked. H. 58 cm. W. approx. 24 cm. D. approx. 4.5 cm.

Provenance: Danske Bank.

DKK 30,000–40,000 / € 4,000–5,350



850

850 ARR

RUT BRYK

b. 1916, d. 1999

A large, rectangular stoneware wall relief. Composed by square tiles with embossed relief decor and flowers. Partly decorated with turquoise blue, light blue, green and greyish black glaze. Made by Arabia, Finland approx. 1960. Unique. Mounted on a wooden board with iron brackets, marked verso Arabia, Finland. H. 83.5 cm. W. 74.5 cm. D. 5 cm.

Provenance: Danish private collector. Acquired by the current owner at Københavns Auktions in approx. 1979.

DKK 60,000–80,000 / € 8,050–10,500



851

851^{ARR}
HANS HEDBERG

b. Köpmansholmen 1917, d. 2007

A sculptural, high-fire faience lid jar modelled in the shape of a pumpkin. Decorated with orange-red glaze with dark brown and grey elements. Inside decorated with dark red glaze. Signed monogram. Unique. H. 15 cm. W. 23 cm. L. 28 cm.

Provenance: Private collection, Monaco.

DKK 20,000 / € 2,700

852^{ARR}
HANS HEDBERG

b. Köpmansholmen 1917, d. 2007

High-fire faience dinnerware modelled in four-sided shape. Decorated with yellow glaze with green elements. Signed monogram. Unique. (28)

Comprising:

15 dinner plates 27.7 x 28.7 cm.

10 luncheon plates 24.7 x 23.7 cm.

1 bowl H. 8.7 cm. W./L. ca. 15.5-16 cm.

2 smaller bowls H. 7.9 cm. W./L. approx. 12.3 cm.

1 small circular bowl H. 5.7 cm. Diam. 10 cm.

Provenance: Private collection, Monaco.

DKK 20,000 / € 2,700



852



853

853^{ARR}
HANS HEDBERG

b. Köpmansholmen 1917, d. 2007

A large, high-fire faience egg sculpture. Decorated with turquoise blue and light greyish green crackle glaze. Signed monogram. Mounted on a three-legged, black lacquered base. Unique. H. incl. base 65 cm. Diam. 34 cm.

Provenance: Private collection, Monaco.

DKK 75,000 / € 10,000

854^{ARR}
HANS HEDBERG

b. Köpmansholmen 1917, d. 2007

A sculptural, high-fire faience lid jar modelled in the shape of a pumpkin. Decorated with orange glaze with red, bluish grey and brown elements. Inside decorated with green glaze with brown elements. Signed monogram. Unique. H. approx. 11.5 cm. Diam. 26 cm.

Provenance: Private collection, Monaco.

DKK 20,000 / € 2,700



854



855

855 ^{ARR}
ALEV EBÜZZIYA SIESBYE

b. Istanbul 1938

A large, round stoneware table lamp. Decorated with transparent greyish green glaze with iron-brown elements. Signed alev. Made 1965 by Royal Copenhagen. H. excl. socket 55 cm. H. incl. socket 65 cm.

In 1962 Alev Ebüzziya Siesbye came to Denmark, from 1963-1968 she was employed at Royal Copenhagen.
DKK 20,000 / € 2,700



856

856 ^{ARR}
AXEL SALTO

b. Copenhagen 1889, d. Frederiksberg 1961

A round stoneware vase modelled with narrow mouth. Decorated with greyish brown and greyish green glaze with a few blue elements. Signed Salto, 1933. Presumably made at Saxbo. H. 32 cm. Diam. 29 cm.

DKK 50,000-60,000 / € 6,700-8,050



857

857
ARNE BANG

b. Frederiksberg 1901, d. Fensmark 1983

Two stoneware bowls and a vase. The outsides with incised, vertical relief decor. Decorated with resp. light blue and green glaze with dark blue elements, with sand coloured glaze and with green and greyish brown glaze. Signed monogram, resp. 122, 123 and 124. Bowls: H. resp. 9 and 9.6 cm. Diam. resp. 19.3-19.6 cm. and 22.2-22.5 cm. Vase: H. 12 cm. (3)

DKK 25,000-30,000 / € 3,350-4,000



858

858
ARNE BANG

b. Frederiksberg 1901, d. Fensmark 1983

A very large, circular stoneware bowl. Modelled on the outside with vertical, fluted relief decor. Decorated with green, sand coloured and brownish black glaze, the inside with reddish brown elements. Signed monogram, 1933. H. 16.5-17.5 cm. Diam. 41-41.5 cm.

DKK 40,000-50,000 / € 5,350-6,700

859^{ARR}

ALEV EBÜZZIYA SIESBYE

b. Istanbul 1938

A circular stoneware bowl. Decorated with turquoise blue glaze. The upper rim decorated with dusty, bluish green glaze. Signed alev '83. Unique. H. 11.5-11.8 cm. Diam. 21.3-21.6 cm.

DKK 75,000-100,000 / € 10,000-13,500



859

860^{ARR}

GERTRUD VASEGAARD

b. Rønne 1913, d. 2007

An oval stoneware dish. Decorated with transparent glaze and rhombus shaped, greyish blue glazed ornaments with a few iron-brown elements. Signed monogram for Gertrud Vasegaard and studio monogram. Unique. H. 5.7 cm. W. 26.5 cm. L. 28.5 cm.

Provenance: The dish was originally a gift from Gertrud Vasegaard to the current owner's grandmother. Hence by descent within the family.

DKK 30,000-40,000 / € 4,000-5,350



860



861

861^{ARR}

CHRISTIAN POULSEN

b. Kolding 1911, d. Kgs. Lyngby 1991

A large, cylindrical, slightly convex stoneware vase with circular mouth. Decorated with turquoise blue glaze. Signed CHR-P. Unique. H. 35 cm. Diam. 31 cm. *Provenance: Acquired by the current owner's mother directly from Christian Poulsen in the early 1980s. Hence by descent to the current owner.*

Exhibited: "Christian Poulsen - Kunstmuseet Trapholt", 1987. Mentioned in the exhibition catalogue register as catalogue no. 87, p. 34. The vase with paper label marked with catalogue no. 87. DKK 30,000 / € 4,000



862

862^{ARR}

CHRISTIAN POULSEN

b. Kolding 1911, d. Kgs. Lyngby 1991

A large, sculptural stoneware vase. Decorated with matte turquoise blue glaze. Signed CHR-P., H3252. Unique. H. 40 cm. Diam. 37 cm.

DKK 40,000 / € 5,350



863

863 ^{ARR}
JEANNE GRUT

b. Nøjsomhed, Købelov Sogn 1927, d. 2009

"Blue Fish"/"Coelacanth". A large faience wall relief in the shape of a fish. Decorated with blue and black glaze. Designed 1963. Made and signed by Royal Copenhagen. L. 107 cm. D. 18 cm.

Literature: Leif Laurrup-Larsen: "Stentøj - Den Kongelige Porcelænsfabrik", 2007, ill. pp. 259-260.

DKK 40,000 / € 5,350



864

864 ^{ARR}
ALEV EBÜZZIYA SIESBYE

b. Istanbul 1938

A tall stoneware vase, decorated with cobalt blue glaze and horizontal, black glazed line decor. Signed alev 98, M43. Unique. H. 41 cm. Diam. 24 cm.

DKK 80,000-100,000 / € 10,500-13,500



865

865 ^{ARR}
ARJE GRIEGST

b. København 1938, d. 2016

"Havterrin"/(Ocean Tureen). A large stoneware tureen with cover. Decorated with Celadon glaze with some blue and greyish black elements. Unsigned. Made by Royal Copenhagen. H. 31 cm. Diam. approx. 36-39 cm. *Provenance: Acquired by the current owner at Royal Copenhagen, Amager Torv in the late 1980s.*

DKK 75,000 / € 10,000



866



866
THORVALD BINDESBØLL

b. Copenhagen 1846, d. s.p. 1908

An earthenware floor vase. Decorated with transparent, brownish black and white glaze with a few blue elements. Signed monogram, 1892. Unique. H. 43.5 cm. Diam. 35 cm.

DKK 50,000–75,000 / € 6,700–10,000

DESIGN

Thursday 13 June

Lot 867 - 1005



867

HANS J. WEGNER

b. Tønder 1914, d. Gentofte 2007

“JH 512”. A patinated oak folding chair. Seat and back with woven cane. Wall mounting included. Model JH 512. Designed 1949. Made approx. 1950s by cabinetmaker Johannes Hansen, not stamped. (2)

Model presented at The Copenhagen Cabinetmakers' Guild Exhibition at Designmuseum Danmark, 1949.

Literature: Grete Jalk [ed.]. "40 Years of Danish Furniture Design", Vol. 3, pp. 98–99. DKK 30,000–40,000 / € 4,000–5,350



868

HANS J. WEGNER

b. Tønder 1914, d. Gentofte 2007

“Papa Bear”. A wingback easy chair with teak “nails” and oak legs. Sides, back and seat cushion upholstered with light wool, back fitted with buttons. Model AP 19. Designed 1951. Manufactured approx. 1960s by AP Stølen.

Model presented at the exhibition “Tidens Møbler” in Forum 1952. DKK 60,000 / € 8,050





869

869
POUL HENNINGSEN

b. Ordrup 1894, d. Hillerød 1967

"PH-3/3". Bronzed brass wall lamp marked "Pat. Appl.". Single layer opaline glass top shade and middle shade, multi layer opaline glass bottom shade. Manufactured 1926-1928 by Louis Poulsen. L. 44 cm.

DKK 25,000-30,000 / € 3,350-4,000

870
HANS J. WEGNER

b. Tønder 1914, d. Gentofte 2007

"Valet Chair". Sculptural, solid mahogany chair. Seat with storage space underneath. Model JH 540. Designed 1953. Made approx. 1960s by cabinetmaker Johannes Hansen, stamped.

Model presented at the Cabinetmaker's Guild Exhibition at Designmuseum Danmark, 1953.

Literature: Grete Jalk [ed]: "40 Years of Danish Furniture Design", vol. 3, pp. 244-247. DKK 75,000 / € 10,000



870



871

871

LOUIS POULSEN

Set of five patinated brass wall lamps with adjustable conical shades. Manufactured approx. 1950-1960s by Louis Poulsen. H. 20 cm. D. 35 cm. (5)

DKK 20,000-25,000 / € 2,700-3,350

872

HANS J. WEGNER

b. Tønder 1914, d. Gentofte 2007

"JH 564". A table / bench with solid oak frame, brass fittings. Reversible solid teak top. Made approx. 1950s by cabinetmaker Johannes Hansen. H. 41.5 cm. L. 150 cm. W. 42.5 cm.

DKK 20,000-25,000 / € 2,700-3,350



872



873

873

HANS J. WEGNER

b. Tønder 1914, d. Gentofte 2007

"Sawbench Chair". A pair of armchairs with patinated oak frame. Seat and back upholstered with patinated Niger leather. Model CH 28. Manufactured 1950-1960s by Carl Hansen & Søn, one stamped by maker. (2)

Literature: "Dansk Kunsthåndværk", no. 9, September 1952.

Literature: Per H. Hansen & Klaus Petersen, "Moderne dansk møbeldesign", 2007, p. 167. DKK 50,000 / € 6,700

874

HANS J. WEGNER

b. Tønder 1914, d. Gentofte 2007

"AP 28/20". Highback easy chair with teak legs and "nails". Sides, seat and back upholstered with white bouclée. Designed 1954. Manufactured 1950-1960s by AP stolen.

Literature: *AP-Stolen/Salesco catalogue, May 1959.*
DKK 25,000–30,000 / € 3,350–4,000



874

875

HANS J. WEGNER

b. Tønder 1914, d. Gentofte 2007

"RY 20". A teak "double" sideboard. Front with six drawers, top with two sliding doors with cane. Beech interior with five adjustable shelves. Designed 1954. Manufactured 1950s by Ry Møbler, stamped.

H. 180. W. 180. D. 52 cm.

Literature: *"Dansk Kunsthåndværk", No. 10–11 November-December 1954, on advertisement pages.*
Literature: *"Bygge og Bo", December 1954, p. 53.* DKK 30,000 / € 4,000



875

876

POUL KJÆRHOLM

b. Østervrå 1929, d. Hillerød 1980

“PK 54”. Dining table with steel frame. Circular flintrolled white flecked marble top. Six-piece solid maple addition ring with stand included. Designed 1963. Manufactured 1984 by Fritz Hansen, with maker's label. H. 65 cm. Diam. 140/210 cm. (2)
Literature: "Poul Kjærholm", Arkitektens Forlag, 1999, pp. 20–21, 112–115 and 179.

Literature: Frederik Sieck: "Dansk Møbelkunst", ill. p. 151.

DKK 50,000–60,000 / € 6,700–8,050



877

POUL KJÆRHOLM

b. Østervrå 1929, d. Hillerød 1980

“PK 26”. A pair of wall mounted sofa sections with chromed steel frame. Loose cushions in seat and back upholstered with Niger leather, fitted with buttons. Designed 1956. Manufactured late 1990s by Fritz Hansen, stamped. Each section: L. 75 cm. (2)
Fittings for wall mounting included.

DKK 100,000–125,000 / € 13,500–17,000



878

POUL KJÆRHOLM

b. Østervrå 1929, d. Hillerød 1980

“PK 24”. Chaise longue with spring steel frame. Seat and back with woven cane. Headrest upholstered with red coloured leather. Designed 1965. Manufactured approx. 1976 by E. Kold Christensen, not stamped. L. 155 cm.

Provenance: Acquired by present owner 1976 at "Den Permanente". DKK 75,000–100,000 / € 10,000–13,500



879

POUL KJÆRHOLM

b. Østervrå 1929, d. Hillerød 1980

“PK 22”. A pair of lounge chairs with chromed steel frame. Seat and back with woven cane. Designed 1956. Manufactured approx. 1970s by E. Kold Christensen, stamped. (2)

DKK 25,000–30,000 / € 3,350–4,000



880

POUL KJÆRHOLM

b. Østervrå 1929, d. Hillerød 1980

“PK 62”. Small coffee / side table with chromed steel frame. Flintrolled, grey flecked white marble top. Manufactured early 1970s by E. Kold Christensen, stamped by maker. H. 17 cm. L. 82 cm. W. 27 cm.

Provenance: Acquired by present owner's parents in 1973–1974. DKK 20,000–25,000 / € 2,700–3,350



881

KAI LYNGBELDT LARSEN

b. Kalundborg 1920, d. 2001

A black fibreglass chair with pierced back, chromed steel frame. Front of back and loose seat cushion upholstered with patinated red leather. Model 509. Manufactured 1950-1960s by Søborg Møbler. Seat: H. 45 cm.

DKK 15,000-20,000 / € 2,000-2,700



881



882

882

POUL HENNINGSEN

b. Ordrup 1894, d. Hillerød 1967

"PH-6/6". Large pendant with patinated nickel plated socket house. Red/white copper shades. Manufactured 1930s by Louis Poulsen.

DKK 60,000 / € 8,050

883 ©
BENT MOUDT

b. 1923, d. 2003

Brazilian rosewood desk with Oregon pine frame and tall rosewood "shoes". Left side with fold-down leaf, right side with pull-out "drawer" in the shape of storage space or writing leaf with three integrated compartments. Brass handle. Designed 1954. Made 1960s by cabinetmaker Arne Poulsen. H. 73 cm. W. 160/244 cm. D. 84 cm.
Provenance: Acquired 1960s by present owner's parents.

Model presented at The Copenhagen Cabinetmakers' Guild Exhibition at Designmuseum Danmark, 1954.

Literature: Grete Jalk [ed.]: "40 Years of Danish Furniture Design", vol. 3, pp. 292-293.

DKK 25,000-30,000 / € 3,350-4,000



883



884

884 ©
GRETE JALK

b. 1920, d. 2006

A pair of rare wall mounted Brazilian rosewood cabinets/shelves. Front with each two sliding glass doors. Interior painted peachy orange. Manufactured 1960-1970s. H. 30 cm. L. 88 cm. D. 30 cm. (2)

DKK 15,000-20,000 / € 2,000-2,700

885

FINN JUHL

b. Frederiksberg 1912, d. Ordrup 1989

“Judas Table”. Oval teak dining table with extension and two extra leaves. Reverse side of top with profiled rim. Designed 1948. Made approx. 1950s by cabinetmaker Niels Vodder, stamped. H. 72 cm. L. 200/245/290 cm. W. 140 cm.

Provenance: Present table consigned with the set of eight Finn Juhl Egyptian chairs, lot no. 887.

DKK 125,000–150,000 / € 17,000–20,000



885



886



886

FINN JUHL

b. Frederiksberg 1912, d. Ordrup 1989

Rare set of four teak and oak chairs. Seat upholstered with original patinated black leather. Model 96. Designed approx. 1955. Manufactured late 1950s by Søren Willadsen. (4)

Literature: Bygge og Bo no. 3, 1955, annonce p. 8.

Literature: Bygge og Bo no. 3, 1955, referred to and ill. in article about Danish Furniture Design, p. 41.

DKK 25,000–30,000 / € 3,350–4,000



887

FINN JUHL

b. Frederiksberg 1912, d. Ordrup 1989

"The Egyptian Chair". Set of eight teak dining chairs. Seat and back upholstered with black leather. Designed 1949. Made approx. 1950s by cabinetmaker Niels Vodder, stamped by maker. (8)

Provenance: Present set of chairs consigned with the Finn Juhl "Judas" table, lot no. 885.

Model presented at The Copenhagen Cabinetmakers' Guild Exhibition at Designmuseum Danmark, 1949.

Literature: Grete Jalk [ed.]: "40 Years of Danish Furniture Design", vol. 3, p. 125. DKK 250,000-300,000 / € 33,500-40,000

888

FINN JUHL

b. Frederiksberg 1912, d. Ordrup 1989

"FJ 45". A teak easy chair. Sides, back and loose seat cushion upholstered with light blue wool, natural leather edgings. Designed 1945. Made approx. 1950s by cabinetmaker Niels Vodder, stamped by maker.

DKK 120,000 / € 16,000



888

889

FINN JUHL

b. Frederiksberg 1912, d. Ordrup 1989

"The Poet". Freestanding two seater sofa with round, tapering stained beech legs. Sides and back upholstered with yellow wool, fitted with buttons, loose seat cushion with brownish green wool. Designed 1941. Made early 1940s by cabinetmaker Niels Vodder. L. 136 cm. Model presented at The Copenhagen Cabinetmakers' Guild Exhibition at Designmuseum Danmark, 1941.

Literature: Grete Jalk [ed.]: "40 Years of Danish Furniture Design", vol. 2, pp. 158-159.

Literature: Esbjørn Hiort: "Arkitekten Finn Juhl", ill. p. 30.

Literature: "Finn Juhl Memorial Exhibition", ill. p. 127.

DKK 150,000 / € 20,000



889

890
POUL HENNINGSEN

b. Ordrup 1894, d. Hillerød 1967

"PH-2/2". Early ceiling lamp with patinated brass frame marked "Pat. Appl.". White lacquered copper top shade, single layer opaline glass middle and bottom shade. Manufactured 1926-1928 by Louis Poulsen. DKK 30,000-40,000 / € 4,000-5,350



890

891
FINN JUHL

b. Frederiksberg 1912, d. Ordrup 1989

Unique, low solid Oregon pine table with rounded frame. Rectangular grey painted top. Made approx. 1946-1947 on special order for Bing & Grøndahl's flagship store at Amager Torv. Not stamped. H. 29.5 cm. L. 100 cm. W. 35 cm.

In 1946, Finn Juhl was put in charge of the interior decoration of the Porcelain manufacturer Bing & Grøndahl's flagship store on Amager torv in Copenhagen. For this interior, he designed a number of unique models that would not be used elsewhere. Among them were a number of tables made of teak, and/or Oregon pine, the same types of wood that were also used for panels and cabinets in the store. The tables were used for the display of porcelain pieces. For the sake of variation, some of the tables were given a painted top. This allowed for a variation in the display of pieces that were often of the same size and basic white colour. The present table was used on the ground floor of the store.

Literature: Esbjørn Hiort: "Arkitekten Finn Juhl", ill. p. 68.

DKK 20,000-30,000 / € 2,700-4,000



891

892
FINN JUHL

b. Frederiksberg 1912, d. Ordrup 1989

"FJ 53". A pair of teak easy chairs with "floating" armrests with brass fittings. Sides, seat and back upholstered with blue wool. Designed 1953. Made 1960s by cabinetmaker Niels Vodder, one chair stamped. (2)

Model presented at The Copenhagen Cabinetmakers' Guild Exhibition at Designmuseum Danmark, 1953.

Literature: Grete Jalk [ed.]: "40 Years of Danish Furniture Design", vol. 3, pp. 270-271.

DKK 125,000-150,000 / € 17,000-20,000



892

893

LYSBERG, HANSEN & THERP

A pair of easy chairs and a matching stool with round, tapering brass legs. Sides, seat and back upholstered with light blue fabric. Designed 1954. Manufactured 1950-1960s for Lysberg, Hansen & Therp, with maker's metal tag. (3)

Model presented at The Copenhagen Cabinetmakers' Guild Exhibition at Designmuseum Danmark, 1954.

Literature: Grete Jalk [ed.]: "40 Years of Danish Furniture Design", vol. 3, pp. 292-293. DKK 20,000-25,000 / € 2,700-3,350



893



894



894

DANISH CABINETMAKER

Freestanding Cuban mahogany vanity cabinet. Front with center mounted flip-door with brass fittings and handles. Left side with compartments in two levels with wavy fronts, base with cavity for pens. Right side with light blue painted interior and two glass shelves. Made late 1940s for Illums Bolighus. H. 41 cm. W. 71 cm. D. 7.5-17 cm.

Literature: "Dansk Kunsthaandværk", vol. 12, December 1949, ill. on top of a desk in a room at the new Hotel Codan.

DKK 15,000 / € 2,000

895

VERNER PANTON

b. Gamtofte 1926, d. 1998

Set of six "Cone" bar stools, steel base. Upholstered with resp. burnt orange and fuchsia pink wool. Designed 1958. Manufactured 1960s by Plus-Linje. H. 79 cm. Diam. 37 cm. (6)

Literature: "Verner Pantan: the collected works", Vitra Design Museum, 2000, ill. p. 242.

DKK 40,000–50,000 / € 5,350–6,700



896



895



896 ©

POUL NØRREKLIT

Brazilian rosewood sideboard with chromed steel legs and handles. Front with four doors, of which two fold-down doors. Interior with shelves and pull-out trays. Designed approx. 1960. Manufactured 1960s by Sigurd Hansen. H. 77 cm. D. 45 cm. L. 216 cm.

DKK 25,000–30,000 / € 3,350–4,000



897

897
BARBRO NILSSON

b. Malmö 1899, d. Höganäs 1983

"Tigerfällan Röd". Handmade wool carpet in "rya" technique. Black striped pattern on red base. Signed BN and AB MMF. Designed 1946. Made second half of 20th century by AB Märta Måås-Fjetterström, Sweden. L. 257 cm. W. 149-154 cm.

Literature: Tyra Lundgren: "Märta Måås-Fjetterström och väv-verkstaden i Båstad", Stockholm 1968, mentioned p. 115.

Literature: Viggo Steen Møller: "En bok om Barbro Nilsson", Höganäs 1977, mentioned p. 38, 94.

DKK 25,000 / € 3,350

898

TORSTEN JOHANSSON

b. Idre 1917, d. Vedbæk 1996, residing in Denmark from 1948

Easy chair with grey painted tubular steel legs, black rubber orb "shoes". Seat and back upholstered with red wool, loose seat cushion with charcoal grey wool. Designed 1952. Made 1950s by cabinetmaker A.J. Iversen.

DKK 30,000-40,000 / € 4,000-5,350



898



899

**899
PEDER MOOS**

b. Nybøl 1906, d. Bredebro, Tønder 1991

Nutwood serving trolley mounted on castors with brass fittings. Top and underlying shelf with "raw" glass, corners with circular inlays of light wood. Stamped "V. Birksholm, Jyllingevej 58, samarbejde med & efter model af Peder Moos 1947, nr. 34(?), Danmark". Designed 1942. Made 1947 by cabinetmaker Verner Birksholm. H. 57 cm. L. 71.5 cm. W. 42 cm.

Provenance: Cabinetmaker Verner Birksholm. Hence by descent in the family.

Model presented at The Copenhagen Cabinetmakers' Guild Exhibition at Designmuseum Danmark, 1942.

In the mid-1940s, Peder Moos tried to put a few of his models into production at, among others, Fritz Hansen. The current model and version is thus made in collaboration with cabinetmaker Verner Birksholm.

Literature: Grete Jalk [ed.]: "40 Years of Danish Furniture Design", vol. 2, p. 177. DKK 30,000–40,000 / € 4,000–5,350

**900
HELGE VESTERGAARD JENSEN**

b. Herning 1917, d. Copenhagen 1987

A sculptural wengé daybed with circular brass fittings. Seat strung with nylon cord. Designed 1955. Made approx. 1960s by cabinetmaker Peder Pedersen. H. 36/42 cm. L. 190 cm. W. 72 cm.

Model presented at The Copenhagen Cabinetmakers' Guild Exhibition at Designmuseum Danmark, 1955.

Literature: Grete Jalk [ed.]: "40 Years of Danish Furniture Design", vol. 3, pp. 342–343. DKK 50,000–75,000 / € 6,700–10,000



900



901 ^{ARR}

PEDER MOOS

b. Nybøl 1906, d. Bredebro, Tønder 1991

Unique wall-mounted nutwood medicine cabinet with numerous inlays of light wood. Front with two tambour doors, handles with small silver inlays, base with circular silver lock. Interior with two adjustable organically shaped shelves. Top inlaid with monogram. Handmade nutwood pencil included. Signed "but this is a gift 29 VIII 1963". Designed and made 1962-1963 by cabinetmaker Peder Moos. Cabinet: H. 44.5 cm. W. 69.5 cm. D. 26.5 cm. Pencil: L. 17 cm. (2)

Provenance: Made and designed by special order 1962-1963 by present owner's father. Two handwritten letters from Peder Moos to seller's father included.

In the mid 1950s the present owner's father was in charge of purchasing furniture and art for Danish embassies abroad. He met many times with Peder Moos during this period and also purchased pieces for himself made by Moos.

In the early 1960s after the present owner's parents built a new house in Denmark, his mother suggested to her husband, that they should acquire a wall-mounted medicine cabinet for their private bathroom. Knowing her husband very well, she stressed that it should be "just a very ordinary metal cabinet".

But, not surprisingly, the present owner's father, who always sought the best of the best, contacted Peder Moos and commissioned a medicine cabinet to be designed, with complete artistic freedom.

Almost a year later, Moos wrote a letter, to let them know that the cabinet was finished and that he would be pleased to meet and install the cabinet himself. The family had no idea what the cabinet would look like, nor any knowledge of any details.



901

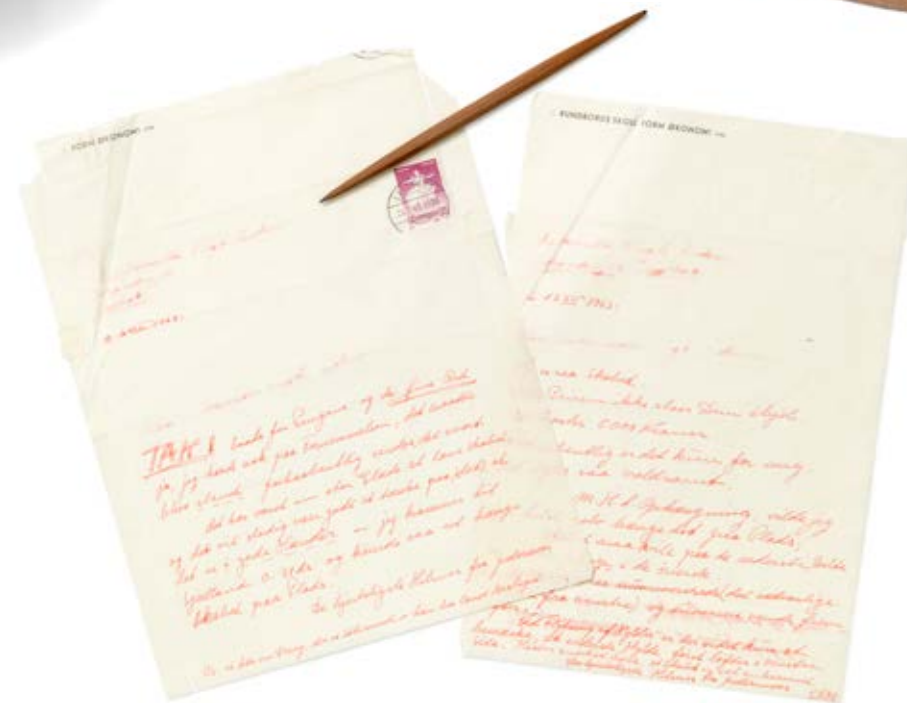


901

Moos always traveled by train and so did the cabinet, which was sent off from his village in Jutland. When the day of the meeting arrived, Moos was present when the family unpacked the cabinet. The surprise and joy of seeing this little gem for the first time was overwhelming. However, even more astonishing was the reaction when Moos revealed the high price – 5,000 DKK. "I hope the price does not kill you" he wrote in one of the two letters included in this sale.

After receiving payment, Moos sent another letter expressing his joy in making the cabinet and that "it will be nice to think about it and know that it is in good hands". He also included a small gift – the small pencil included in this sale – with the inscription: "but this is a gift, 29. August 1963".

DKK 250,000–300,000 / € 33,500–40,000





902

902
POUL HENNINGSEN

b. Ordrup 1894, d. Hillerød 1967

"PH-3/2". Patinated browned brass table lamp. Marked "Pat. Appl.". Frosted glass shades. Manufactured 1926–1926 by Louis Poulsen. H. 44 cm.

DKK 40,000–50,000 / € 5,350–6,700

903

EDVARD KINDT-LARSEN

b. Frederiksberg 1901, d. Gentofte 1982

TOVE KINDT-LARSEN

b. 1906, d. 1994

"Fireside chair". A teak easy chair with matching stool. Seat, back and stool upholstered with light wool, fitted with brown leather edgings and buttons. Designed 1940. Made 1950s by cabinetmaker Gustav Bertelsen. (2)

Model presented at The Copenhagen Cabinetmakers' Guild Exhibition at Designmuseum Danmark, 1940. Won 1st prize at the exhibition.

Literature: Grete Jalk [ed.]: "40 Years of Danish Furniture Design", vol. 2, ill. pp. 108–111. DKK 100,000 / € 13,500



903



904

904 ©
EJNER LARSEN

b. 1917, d. 1987

AKSEL BENDER MADSEN

b. 1916, d. 2000

Solid Brazilian rosewood vanity box, reverse side of lid mounted with mirror. Interior with storage compartment and adjustable space dividers. Made 1950-1960s by cabinetmaker Willy Beck. H. 9.5 cm. W. 31 cm. D. 29 cm. *Model presented at The Copenhagen Cabinetmakers' Guild Exhibition at Designmuseum Danmark, 1950.*

Literature: Grete Jalk [ed.]: "40 Years of Danish Furniture Design", vol. 3, p. 133.

DKK 15,000–20,000 / € 2,000–2,700



905 ©
EJNER LARSEN

b. 1917, d. 1987

AKSEL BENDER MADSEN

b. 1916, d. 2000

Freestanding teak desk with matching drawer section. Front with five drawers, top with two solid Brazilian rosewood pull-out trays. Handles, plinth and inlays on frame of Brazilian rosewood. Model 2447. Designed 1957. Made 1957 for cabinetmaker Willy Beck, with maker's paper label. Desk: H. 74 cm. L. 180 cm. W. 88 cm. Drawer section: H. 69,5 cm. D. 86 cm. W. 42,5 cm. (2) *Provenance: The desk is made as a test piece and awarded a silver medal 24/4 1957 with paper label/proof inside drawer.*

Model presented at The Copenhagen Cabinetmakers' Guild Exhibition at Designmuseum Danmark, 1957. Literature: Grete Jalk [ed.]: "40 Years of Danish Furniture Design", vol. 4, p. 8.

In 1946, classmates Ejner Larsen and Aksel Bender Madsen began collaborating with cabinetmaker Willy Beck. It became a 25-year long and close collaboration where they made furniture with great skill in the workshop in Classensgade, Copenhagen. This rare desk was completed in 1957, and the model was exhibited at The Cabinetmaker's Guild Exhibition at The Danish Museum of Decorative Art & Design the same year. It shows the essence of the style of the two architects, and of Danish design in general, as it continues the legacy of Kaare Klint and unites form and function without compromising the quality of design and craftsmanship.

DKK 100,000 / € 13,500



905

906

TH. VALENTINER

A pair of adjustable patinated brass floor lamps with teak base. Conical light fabric shade. Model THV-376. Manufactured 1960s for retailer Poul Dinesen. H. 140 cm. L. arm 62 cm. (2)

DKK 20,000 / € 2,700

907

FRITZ HANSEN

Easy chair with stained beech legs. Seat, sides and back upholstered with light lambskin, back fitted with buttons. Model 1518. Manufactured 1930-1940s by Fritz Hansen.

DKK 25,000-30,000 / € 3,350-4,000



906



907

908 ©

EJNER LARSEN

b. 1917, d. 1987

AKSEL BENDER MADSEN

b. 1916, d. 2000

Brazilian rosewood coffee table mounted on oblique, tapering legs. Circular top with raised edge. Made 1950-1960s by cabinetmaker Willy Beck, with maker's metal tag. H. 55.5 cm. Diam. 100 cm.

Model presented at The Copenhagen Cabinetmakers' Guild Exhibition at Designmuseum Danmark, 1953.

Literature: Grete Jalk [ed.]: "40 Years of Danish Furniture Design", vol. 3, ill. pp. 236-237.

DKK 20,000-25,000 / € 2,700-3,350



908

909 ©
OLE WANSCHER

b. Frederiksberg 1903, d. Charlottenlund 1985

A pair of Brazilian rosewood armchairs. Seat and curvy back upholstered with black leather. Made 1950s by cabinetmaker A.J. Iversen, with maker's paper label. (2)

Literature: Grete Jalk [ed.]: "40 Years of Danish Furniture Design", variant of similar model ill. vol. 2, p. 295 and vol. 3, p. 19.

DKK 20,000–25,000 / € 2,700–3,350



910
JACOB KJÆR

b. 1896, d. 1957

"UN Chair". A pair of mahogany armchairs. Seat and back upholstered with black leather. Model B 37. Designed 1949. Made 1954 by cabinetmaker Jacob Kjær, one with maker's paper label. (2)

Literature: Noritsugu Oda, "Danish Chairs", 1999, ill. and mentioned p. 33.

Literature: Grete Jalk [ed.]: "40 Years of Danish Furniture Design", vol. 3, p. 109. DKK 50,000 / € 6,700



911 ©
OLE WANSCHER

b. Frederiksberg 1903, d. Charlottenlund 1985

Brazilian rosewood dining room suite, consisting of a set of eight chairs, dining table with extension and a tall cabinet. Chairs with cross bars in back, seats upholstered with black leather. Circular table with curvy rail, one extension leaf with rail and two pine leaves. Cabinet with two pull-out leaves in frame, front with two doors, brass handles and fittings. These examples made 1962 by cabinet-maker A.J. Iversen, table with paper label. Table: H. 74 cm. Diam. 125 cm. Each leaf: W. 60 cm. Total L. 305 cm. Cabinet: H. 154.5 cm. W. 112 cm. D. 40 cm. (10)

Copy of the original receipt included.

DKK 60,000–75,000 / € 8,050–10,000



911

911

912
POUL HENNINGSEN

b. Ordrup 1894, d. Hillerød 1967

"PH-1/1 Cascade". Browned brass ten-arm chandelier. Brown bakelite socket houses. Shade fittings marked "PH-1" and "Patented". Amber coloured glass shades. Manufactured 1930s by Louis Poulsen. H. 35 cm. Diam. 68 cm.

Literature: "Light Years Ahead!", ill. pp. 196-197.

DKK 50,000–60,000 / € 6,700–8,050



912



913 ©
OLE WANSCHER

b. Frederiksberg 1903, d. Charlottenlund 1985

A pair of Brazilian rosewood high-back easy chairs. Sides, back and loose seat cushion upholstered with original brown leather. Made 1960s by cabinetmaker A.J. Iversen. (2) *DKK 30,000 / € 4,000*



914



913

914 ©
OLE WANSCHER

b. Frederiksberg 1903, d. Charlottenlund 1985

Set of 10 Brazilian rosewood dining chairs. Seat upholstered with patinated Niger leather. Designed 1962. Made 1960s by cabinetmaker A.J. Iversen. (10)

DKK 200,000–250,000 / € 27,000–33,500



915

915
MÄRTA MÅÅS-FJETERSTRÖM

b. Kimstad 1873, d. Helsingborg 1941

"Ljusa Plador". Handwoven wool carpet in "rölakan" flat weave technique. Polychrome geometric decor on light base. Signed AB MMF. Designed 1933. Made after 1942 by AB Märta Måås-Fjetterström, Sweden. L. 274 cm. W. 196 cm.

Literature: Tyra Lundgren: "Märta Måås-Fjetterström och väv-verkstaden i Båstad", Stockholm 1968, mentioned p. 113. DKK 45,000 / € 6,050



916

916
JOHAN ROHDE

b. Randers 1856, d. Hellerup 1935

Large table mirror on oval elm base decorated with inlaid bands of fruit wood, front with drawer. Mirror frame mounted on a base with profiles and ornamentation, in which the mirror can be tilted and rotated. Made approx. 1910-1920s, probably by Brdr. H.P. & L. Larsen. H. 88 cm. W. 62 cm. D. 40 cm.

Provenance: Bruun Rasmussen auction 785/643, 2008.

Provenance: The Bonnesen family.

DKK 20,000-25,000 / € 2,700-3,350



917

917
KAARE KLINT

b. Frederiksberg 1888, d. Copenhagen 1954

“The Red Chair”. Set of four armchairs with profiled mahogany frame. Seat and back upholstered with patinated natural leather. Model 3758A. Designed 1930. Made approx. mid 1980s by Rud. Rasmussen Cabinetmakers. (4)

Provenance: Acquired at Rud. Rasmussen Cabinetmakers mid 1980s by present owner's parents.

Literature: Gorm Harkær, Klintiana: “Kaare Klint”, vol. 2, ill. and mentioned p. 79–80. DKK 30,000 / € 4,000



918
KAARE KLINT

b. Frederiksberg 1888, d. Copenhagen 1954

Freestanding three seater sofa with eight-legged, profiled mahogany cross-frame. Sides, seat and back upholstered with patinated natural leather. Model 4118. Designed 1930. Made approx. 1979 by Rud. Rasmussen Cabinetmakers. L. 199 cm.

Provenance: Acquired by present owner approx. 1979 from Rud. Rasmussen Cabinetmakers.

KK label no. 37622.

Literature: Gorm Harkær, Klintiana: “Kaare Klint”, vol. 2, ill. p. 92. DKK 50,000–60,000 / € 6,700–8,050



918



919

919

KAARE KLINT

b. Frederiksberg 1888, d. Copenhagen 1954

“The Red Chair”. Armchair with profiled mahogany frame. Seat and back upholstered with patinated Niger leather, fitted with brass nails. Model 3758A. Designed 1930. Made approx. 1950s by Rud. Rasmussen Cabinetmakers.

Literature: Gorm Harkær, Klintiana: “Kaare Klint”, vol. 2, ill. and mentioned p. 79–80. DKK 20,000 / € 2,700

920

KAARE KLINT

b. Frederiksberg 1888, d. Copenhagen 1954

Early Cuban mahogany coffee table with circular top. Profiled frame and underlying square shelf. Model 6687. Designed 1930. Made approx. 1935–1936 by Rud. Rasmussen Cabinetmakers, with maker's paper label. H. 55.5 cm. Diam. 78.5 cm.

KK label no. 13174.

Literature: Gorm Harkær, Klintiana: “Kaare Klint”, vol. 2, ill. p. 55. DKK 20,000 / € 2,700



920



921

921

KAARE KLINT

b. Frederiksberg 1888, d. Copenhagen 1954

A pair of mahogany bergères with rosewood inlays and “shoes”. Sides, seat and back with woven cane. Loose cushions in seat and back upholstered with patinated Niger leather. Model 4488. Designed 1931. Made approx. 1970–1980s by Rud. Rasmussen Cabinetmakers, with maker's paper label. (2)

Labels indistinctly numbered.

Literature: Gorm Harkær, Klintiana: “Kaare Klint”, vol. 2, ill. and mentioned p. 86. Literature: Grete Jalk [ed.]: “40 Years of Danish Furniture Design”, vol. 4, ill. p. 214.

DKK 60,000 / € 8,050



922

922

KAARE KLINT

b. Frederiksberg 1888, d. Copenhagen 1954

“The Red Chair”. Set of ten mahogany chairs with profiled frame. Seat and back upholstered with patinated Niger leather, fitted with brass nails. Model 3949. Designed 1928. Made approx. 1970-1980s by Rud. Rasmussen Cabinetmakers. (10)
Literature: Gorm Harkær, Klintiana: “Kaare Klint”, vol. 2, ill. and mentioned pp. 82–84.

DKK 200,000 / € 27,000



923

923

FRITZ HANSEN

Set of four stained beech stools. Height adjustable seat upholstered with patinated Niger leather. Manufactured 1940-1950s by Fritz Hansen. H. 44-58 cm. (4) *DKK 25,000 / € 3,350*

924

JØRGEN ROHWEDER

b. 1904, d. 1994

A set of four stained beech stools. Seat upholstered with brown patinated leather. Made approx. 1950s by Falsteds Møbelstefabrik, Denmark. (4) *DKK 20,000-25,000 / € 2,700-3,350*



924



925

925

OLE JACOBSEN

Sculptural teak easy chair. Seat and back upholstered with light flecked wool. Designed 1949. Made 1950s by C.B. Hansen's Etablissement.

DKK 20,000-25,000 / € 2,700-3,350

926
DANISH CABINETMAKER
Highback easy chair with elm legs. Seat, sides and back upholstered with light sheepskin, back fitted with buttons. Made 1930-1940s, Denmark.
DKK 20,000-25,000 / € 2,700-3,350



926



927

927
TH. VALENTINER
A pair of adjustable brass table lamps. Conical light fabric shades. Model THV 375. Manufactured 1960s for retailer Poul Dinesen. H. max. 60 cm. L. arm 61 cm. (2)
Literature: Poul Dinesen catalogue approx. 1960.
DKK 15,000-20,000 / € 2,000-2,700

928
BØRGE MOGENSEN
b. Aalborg 1914, d. Gentofte 1972

A pair of oak coffee tables/benches. Top with woven cane. Model 5273. Manufactured approx. 1970s by Fredericia Stolefabrik. H. 35 cm. L. 69 cm. W 46 cm. (2)
DKK 25,000-30,000 / € 3,350-4,000



928

929
KNUD FÆRCH

b. Brønderslev 1924, d. Sorø 1992

Set of six teak and oak armchairs. Seat upholstered with brown coloured leather. Model 251. Designed 1969. Manufactured 1970s by Slagelse Møbelværk. (6) DKK 25,000–30,000 / € 3,350–4,000



929



930
POUL M. VOLTHER

b. 1923, d. 2001

Rare freestanding teak sofa bench with sculptural back. Seat and "floating" back upholstered with light flecked fabric. Designed 1952. Made 1950s by cabinetmaker Erhard Rasmussen. H. 84 cm. L. 192 cm. D. 73 cm. Model presented at *The Copenhagen Cabinetmakers' Guild Exhibition at Designmuseum Danmark, 1952.* Literature: Grete Jalk [ed.]: "40 Years of Danish Furniture Design", vol. 3, pp. 226.

DKK 40,000–50,000 / € 5,350–6,700



930





931

931
POUL HENNINGSEN

b. Ordrup 1894, d. Hillerød 1967

"PH-1/1". A pair of browned brass wall lamps. Amber coloured glass shades. Bakelite socket house, shade fittings marked "P.H.-1" and "Patented". Manufactured 1930s by Louis Poulsen. (2)

DKK 20,000–25,000 / € 2,700–3,350

932

"FJ 44". A sculptural wengé armchair. Seat upholstered with natural leather. No. 34/100. Manufactured 2011 by OneCollection, with maker's brass tag.

DKK 40,000–50,000 / € 5,350–6,700

933

FINN JUHL

b. Frederiksberg 1912, d. Ordrup 1989

"FJ 44". A sculptural wengé armchair. Seat upholstered with natural leather. No. 33/100. Manufactured 2011 by OneCollection, with maker's brass tag.

Limited edition of 100 chairs. DKK 40,000–50,000 / € 5,350–6,700



932



933



934

934
NIELS VODDER

b. 1892, d. 1982

Freestanding teak display cabinet mounted on round tapering legs. Front with two sliding glass doors, behind which four adjustable shelves. Made 1960s by cabinetmaker Niels Vodder, not stamped. H. 115 cm. L. 140/150 cm. W. 50 cm.

DKK 40,000–50,000 / € 5,350–6,700



935

935
FINN JUHL

b. Frederiksberg 1912, d. Ordrup 1989

“FJ 45”. Freestanding two seater teak sofa. Seat, back and loose seat cushions upholstered with light yellow fabric. Designed 1945. Made approx. 1950–1960s by cabinetmaker Niels Vodder, stamped. L. 120 cm.

DKK 100,000–150,000 / € 13,500–20,000



936

**936
FINN JUHL**

b. Frederiksberg 1912, d. Ordrup 1989

“BO 72”. A nutwood armchair. Seat and back upholstered with Niger leather. Made approx. 1960s by Bovirke.

Literature: “Finn Juhl Memorial Exhibition”, Japan 1990, ill. p. 137. Literature: The Magazine “Dansk Kunsthåndværk” nr. 12, 1951.

DKK 25,000–30,000 / € 3,350–4,000



938

**938
FINN JUHL**

b. Frederiksberg 1912, d. Ordrup 1989

“BO 72”. A nutwood armchair. Seat and back upholstered with Niger leather. Made approx. 1960s by Bovirke.

Literature: “Finn Juhl Memorial Exhibition”, Japan 1990, ill. p. 137. Literature: The Magazine “Dansk Kunsthåndværk” nr. 12, 1951.

DKK 25,000–30,000 / € 3,350–4,000



937

**937
FINN JUHL**

b. Frederiksberg 1912, d. Ordrup 1989

“FJ 50”. Teak desk with “floating” top with profiled edges. Cross and diagonal stretchers. Made 1960s by cabinetmaker Niels Vodder. H. 72 cm. L. 200 cm. W. 96 cm.

Variant of model presented at The Copenhagen Cabinetmakers' Guild Exhibition at Designmuseum Danmark, 1952.

Literature: Grete Jalk [ed.]: “40 Years of Danish Furniture Design”, vol. 3, p. 232–233.

DKK 80,000–100,000 / € 10,500–13,500



939

939 ©
NIELS VODDER

b. 1892, d. 1982

“NV 54”. Freestanding Brazilian rosewood sideboard mounted on round tapering legs. Front with two tambour doors behind which maple shelf and trays. Designed 1954. Made 1950 by cabinet-maker Niels Vodder. Retailed by Illums Bolighus, with metal tag. H. 87 cm. L. 200/207.5 cm. W. 50 cm.

Literature: Niels Vodder catalogue, May 1956.

DKK 80,000–100,000 / € 10,500–13,500

940 ©
FINN JUHL

b. Frederiksberg 1912, d. Ordrup 1989

“FJ 45”. A Brazilian rosewood easy chair. Sides, back and loose seat cushion upholstered with black Hallingdal wool, natural leather edgings. Designed 1945. Made approx. 1960s by cabinetmaker Niels Vodder, stamped by maker.

Provenance: Percy von Halling-Koch, hence by descent in the family.

DKK 150,000–200,000 / € 20,000–27,000



940

941 ©

FINN JUHL

b. Frederiksberg 1912, d. Ordrup 1989

“FJ 53”. Freestanding two seater Brazilian rosewood sofa, “floating” armrests with brass fittings. Sides and back upholstered with light grey wool, seat with dark grey wool. Designed 1953. Made 1950–1960s by cabinetmaker Niels Vodder. Retailed by Illums Bolighus with plaque. L. 128 cm.

Model presented at The Copenhagen Cabinetmakers' Guild Exhibition at Designmuseum Danmark, 1953.

Literature: Grete Jalk [ed.]: “40 Years of Danish Furniture Design”, vol. 3, ill. pp. 270–271. DKK 125,000 / € 17,000



941



942

942

FINN JUHL

b. Frederiksberg 1912, d. Ordrup 1989

“FJ 55”. Set of six East Indian rosewood dining chairs. “Floating” seat and back mounted with brass fittings and upholstered with black leather. Designed 1955. Made 1960s by cabinetmaker Niels Vodder, not stamped. (6) *Provenance: Acquired by present owner's grandparents. Hence by descent in the family.*

Literature: Niels Vodder Catalogue, May 1956.

Literature: Noritsuga Oda: “Finn Juhl Memorial Exhibition”, ill. p. 140–141. DKK 80,000–100,000 / € 10,500–13,500



943

943
IB KOFOD-LARSEN

b. 1921, d. 2003

Rare, freestanding two seater sofa with solid teak armrests and round, tapering legs. Sides, seat and back upholstered with original red and grey wool. Model 423. Designed 1954. Made approx. 1956 by cabinetmakers Christensen & Larsen. L. 126 cm.

Model presented at The Copenhagen Cabinetmakers' Guild Exhibition at Designmuseum Danmark, 1954.

Literature: Grete Jalk [ed.]: "40 Years of Danish Furniture Design", vol. 3, ill. and referred to pp. 276-277. DKK 40,000 / € 5,350



944

944
ALF SVENSSON

b. Sverige 1923, d. s.p. 1992

A pair of small teak chests of drawers. Front with each five drawers. Manufactured approx. 1960s by Bjästa Möbelsnickeri, Sweden, one stamped. H. 72 cm. L. 60 cm. D. 45 cm. (2)

DKK 20,000 / € 2,700



945

945
POUL HENNINGSEN

b. Ordrup 1894, d. Hillerød 1967

"PH-4/3". Table lamp with patinated brass frame marked "Pat. Appl.". Red/gold copper top shade, multi layer opaline glass middle shade and frosted glass bottom shade. Manufactured 1926-1928 by Louis Poulsen. H. 53 cm.

DKK 60,000-80,000 / € 8,050-10,500



946

946 ©
ARNE HOVMAND-OLSEN

b. 1919, d. 1989

Brazilian rosewood sideboard with runner frame. Front with three drawers and four doors. Made 1960-1970s by Mogens Kold. H. 70.5 cm. L. 240 cm. D. 45 cm.

DKK 30,000-40,000 / € 4,000-5,350

947 ©
NIELS O. MØLLER

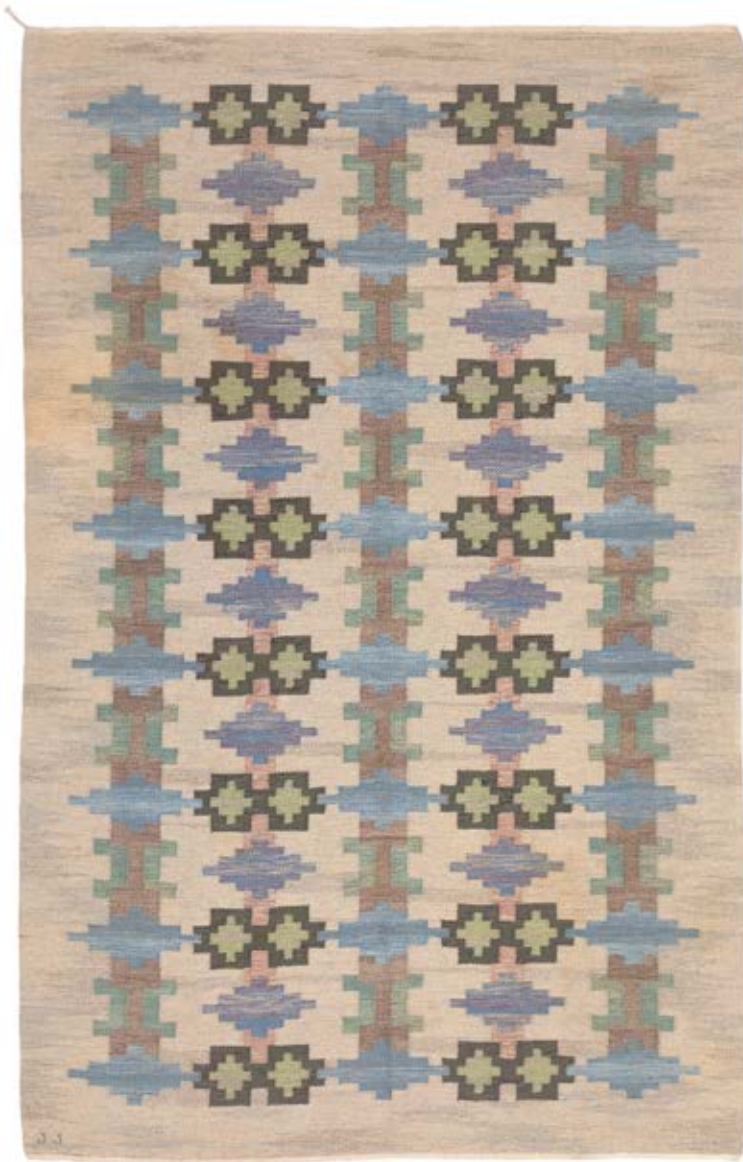
b. 1920, d. 1982

A set of eight Brazilian rosewood dining chairs and a matching pair of armchairs. Seat with woven paper cord. Model 62 and 78. Designed 1962. Manufactured 1960-1970s by J.L. Møller, seven with maker's metal tag. (10)

DKK 50,000-60,000 / € 6,700-8,050



947



948

948^{ARR}
JUDITH JOHANSSON

b. Trollhättan 1916, d. Tenerife 1993

“Riddarsporrar” (Larkspurs - Flowering larkspurs in early morning sun). Handwoven wool carpet in “rölakan” flatweave technique. Geometric pattern in shades of blue, purple, green and brown on grey base. Signed JJ. Designed 1961–1962. Made second half of 20th century, Sweden. L. 293 cm. W. 187 cm.

Literature: Torsten Andersson: “JJ. Så vävdes ett livsverk”, Varberg 2006, mentioned p. 19, ill. p. 20.

DKK 20,000 / € 2,700



949

949
CLAUS BONDERUP

b. Aalborg 1943, d. 2022

TORSTEN THORUP

b. 1944

Set of six wengé cubes. Four with patinated Niger leather seat, two with grey fossil stone top. Manufactured late 1960–1970s for Georg Jensen. H./L./W. 40 cm. (6)

Provenance: Georg Jensen showroom.

DKK 30,000 / € 4,000

950
EBBE CLEMMENSEN

b. 1917, d. 2003

KAREN CLEMMENSEN

b. 1917, d. 2001

A pair of black lacquered ash wood easy chairs. Seat, back and armrests upholstered with patinated Niger leather. Model 4305. Designed 1959. Manufactured 1966 by Fritz Hansen, with maker's label. (2)

Model presented at The Copenhagen Cabinetmakers' Guild Exhibition at Designmuseum Danmark, 1959.

Literature: Grete Jalk [ed.]: “40 Years of Danish Furniture Design”, vol. 4, p. 100–101.

DKK 30,000–40,000 / € 4,000–5,350



950

951 ©

NIELS O. MØLLER

b. 1920, d. 1982

A set of 12 Brazilian rosewood dining chairs and a matching pair of armchairs. Seat and back with woven cane. Model 65 and 80. Designed resp. 1962 and 1968. Manufactured 1960–1970s by J.L. Møller. (14)

DKK 80,000–100,000 / € 10,500–13,500



951



952

952
ALF SVENSSON

b. Sverige 1923, d. s.p. 1992

“Norrland”. A pair of teak cabinets. Front with two doors covered with pleated rattan. Interior with adjustable shelves. Manufactured approx. 1960s by Bjästa Möbelsnickeri, Sweden, stamped. H. 72 cm. L. 120 cm. D. 45 cm. (2)

DKK 25,000 / € 3,350

953
IB KOFOD - LARSEN

b. 1921, d. 2003

“The Seal”. Freestanding two seater mahogany sofa. Sides, back and seat cushion upholstered with patinated brown leather. Designed 1957. Manufactured 2010s by Brdr. Petersens Polstermøbelfabrik. L. 138 cm.

DKK 30,000–40,000 / € 4,000–5,350



953

954

KAARE KLINT

b. Frederiksberg 1888, d. Copenhagen 1954

wRare Cuban mahogany armchair. Seat, back and sides upholstered with patinated Niger leather, fitted with brass nails. Model 4483. Designed and made approx. 1932 by Rud. Rasmussen Cabinetmakers, with maker's paper label.

KK label no. 14969.

Literature: Gorm Harkær, Klintiana: "Kaare Klint", vol. 2, ill. and mentioned p. 80.

DKK 40,000–50,000 / € 5,350–6,700



954

955

KAARE KLINT

b. Frederiksberg 1888, d. Copenhagen 1954

A mahogany sideboard, front with two sliding doors, interior with trays. Frame with pull-out leaves with black ebonite handles, sides with brass handles. Model 4122. Designed 1930. Made 1940s by Rud. Rasmussen Cabinetmakers, with maker's paper label. H. 96 cm. W. 156.5 cm. D. 62.5 cm.

KK label no. 16183.

Literature: Rigmor Andersen: "Kaare Klint møbler", 1979, mentioned and ill. pp. 72–73.

Literature: Gorm Harkær, Klintiana: "Kaare Klint", vol. 1, pp. 337–339 and vol. 2, p. 69.

DKK 20,000–25,000 / € 2,700–3,350



955



956

**956
KAARE KLINT**

b. Frederiksberg 1888, d. Copenhagen 1954

A mahogany bergère with rosewood inlays and "shoes". Sides, seat and back with woven cane. Loose cushions in seat and back upholstered with patinated natural leather. Model 4488. Designed 1931. Made approx. 1980s by Rud. Rasmussen Cabinetmakers, with maker's paper label.
KK label no. 40143.

*Literature: Gorm Harkær, Klintiana: "Kaare Klint", vol. 2, ill. and mentioned p. 86.
Literature: Grete Jalk [ed.]: "40 Years of Danish Furniture Design", vol. 4, ill. p. 214.
DKK 40,000 / € 5,350*

**957
KAARE KLINT**

b. Frederiksberg 1888, d. Copenhagen 1954

"Games table for a lady". Mahogany set consisting of a table and matching set of four chairs. Square table with triangular fold-out leaves. Chairs with diagonal frame, back with stretchers. Seat with woven cane. Made 1940-1950s by Rud. Rasmussen Cabinetmakers, with maker's paper label. H. 67. cm. W./L. 61/87 cm. (5)
KK label no. 20549.



Presented at the Copenhagen Cabinetmakers' Guild Exhibition in 1946.

A contemporary critic then described it in this way: "... Professor Kaare Klint's Interior with Card Tables for A Lady, Perfect in terms of craftsmanship, notice the tabletop which consists of three layers of solid wood that have been glued together with the grains running at right angles to each other..."

*Literature: Grete Jalk [ed.]: "40 years of Danish furniture design": the Copenhagen Cabinetmakers Guild exhibitions 1927-1966, vol. 2, ill. and described p. 312-313.
DKK 200,000 / € 27,000*



957

958

DANISH CABINETMAKER

Easy chair with elm frame. Sides and back upholstered with original patinated Niger leather fitted with leather covered nails, light canvas seat cushion. Made approx. 1930s, Denmark. *DKK 30,000 / € 4,000*



958



959

959

POUL HENNINGSEN

b. Ordrup 1894, d. Hillerød 1967

"PH-5/5". Pendant with patinated brass socket house marked "Pat. Appl.". Copper shades with lacquered inside. Manufactured 1926-1928 by Louis Poulsen. *DKK 60,000 / € 8,050*

960

KAJ GOTTLOB

b. Copenhagen 1887, d. 1976

A pair of reddish painted chests for drawings. Front with each five drawers, circular black stained wooden handles. Made approx. 1920. H. 72 cm. W. 77.5 cm. D. 64 cm. (2)
Provenance: Kaj Gottlob's drawing office at Nørre Farimagsgade 17, Copenhagen. DKK 60,000–80,000 / € 8,050–10,500



960



961

961

POUL HENNINGSEN

b. Ordrup 1894, d. Hillerød 1967

"PH-4/3". Rare, early table lamp with patinated browned brass frame marked "Pat. Appl.". Thick switch house. Original red/gold copper shades. Manufactured 1926–1928 by Louis Poulsen. H. 52 cm.

DKK 100,000–150,000 / € 13,500–20,000



962

962
FRITS HENNINGSEN, ATTRIBUTED

b. 1889, d. 1965

Small, narrow mahogany cabinet, top inlaid with patinated leather. Front with two tambour doors, inside and underlying curvy shelf. Made approx. 1940s, presumably by cabinetmaker Frits Henningsen. H. 100 cm. W. 98 cm. D. 19 cm.

DKK 20,000–25,000 / € 2,700–3,350



963



964

963
HOLGER KAPEL

b. Frederiksberg 1896, d. Vordingborg 1979

"The Zodiac Sign Table." Coffee table with Cuban mahogany frame. Top with zodiac sign mosaic. Made 1930–1940s by Holger Kapel. H. 57 cm. L. 88 cm. W. 69 cm.

DKK 20,000–25,000 / € 2,700–3,350

964
FRITS HENNINGSEN

b. 1889, d. 1965

A pair of easy chairs with stained beech legs. Sides, back and seat upholstered with patinated Niger leather, back fitted with buttons. Made approx. 1930–1940s by cabinetmaker Frits Henningsen. (2)

DKK 50,000–75,000 / € 6,700–10,000



965

965
SWEDISH DESIGN
Handwoven wool carpet in "rölakan" flatweave technique. Light stripes on red base. Made approx. 1950-1960s. L. 306 cm. W. 185 cm.
According to the seller, the carpet was produced for and retailed by the Swedish interior design store AB Ditzingers (1895-2005). DKK 20,000 / € 2,700



966

966
FRITS HENNINGSEN
b. 1889, d. 1965
Three seater sofa with mahogany frame and tapering legs. Sides, back and seat upholstered with patinated Niger leather. Made 1930-1940s by cabinetmaker Frits Henningsen. H. 73 cm. L. 200 cm. D. 76 cm.
DKK 50,000-60,000 / € 6,700-8,050



967

967
LYSBERG, HANSEN & THERP
A pair of mahogany bedside tables, top covered with patinated Niger leather. Front with drawer, underneath which shelf. Brass profiles, handles and "shoes". Made approx. 1930-1940s for Lysberg, Hansen & Therp. H. 59.5 cm. D. 37 cm. W. 51 cm. (2)
DKK 15,000-20,000 / € 2,000-2,700



968
FRITS HENNINGSEN

b. 1889, d. 1965

A rare pair of wingback chairs with oak legs. Sides, seat and back upholstered with original patinated natural leather, back fitted with buttons. Made 1950s by cabinetmaker Frits Henningsen. (2)
Literature: Bodil Busk Laursen, Søren Matz, Chr. Holmsted Olesen [ed.]: "Mesterværker 100 Aars Dansk Møbelsnedkeri", the Kulturbro Foundation, 2000, ill. and referred to p. 39.

DKK 600,000–800,000 / € 80,500–105,000

968



969

969
POUL HENNINGSEN

b. Ordrup 1894, d. Hillerød 1967

"PH-3,5/2". Patinated brass table lamp. Green/white zinc top shade, frosted glass middle and bottom shade. Manufactured 1930s by Louis Poulsen. H. 41 cm.

Version without switch house.

DKK 40,000–50,000 / € 5,350–6,700

970
BØRGE MOGENSEN

b. Aalborg 1914, d. Gentofte 1972

A teak chest of drawers with oak frame. Front with eight drawers, fitted with special brass handles. Model A 234. Manufactured 1960s by C.M. Madsen for FDB, stamped. H. 92.5 cm. W. 122.5 cm. D. 44.5 cm.

Literature: FDB catalogue 1964–1965, p. 38.

DKK 25,000 / € 3,350



970



971

971
BØRGE MOGENSEN

b. Aalborg 1914, d. Gentofte 1972

"The Spanish Chair". Early armchair with patinated oak frame. Seat and back with patinated natural grain leather. made by Dahlman. Model 2226. Designed 1958. Manufactured early 1960s by Fredericia Stolefabrik

Model presented at The Copenhagen Cabinetmakers' Guild Exhibition at Designmuseum Danmark, 1958.

Literature: Grete Jalk [ed.]: "40 Years of Danish Furniture Design", vol. 4, pp. 66–69.

DKK 30,000–40,000 / € 4,000–5,350



972

972
ERIK LUNDBERG

20. century

"Skogsstjärna blå". Handwoven wool carpet in "röla-kan" flatweave technique. Blue base with grey border with geometric decor in shades of blue and brown. Made second half of 20th century by Vävaregården, Eringsboda, Sweden. L. 315 cm. W. 198 cm.

DKK 25,000 / € 3,350



973

973
BØRGE MOGENSEN

b. Aalborg 1914, d. Gentofte 1972

"Øresund". A pair of oak chests of drawers on runner legs with black metal stretchers. Front each with four drawers with round, carved handles. Designed 1959. Manufactured 1960–1970s by Karl Andersson & Söner, Sweden, marked. H. 84 cm. W. 68.5 cm. D. 54 cm. (2)

DKK 20,000 / € 2,700

974
EDVIN HELSETH

b. Norge 1925, d. s.p. 2017

"Trybo". Set of four solid pine lounge chairs, swiveling back rest. Designed 1968. Manufactured late 1960–1970s by Strange Bruk, Norway. (4)

DKK 30,000–40,000 / € 4,000–5,350



974

975

BØRGE MOGENSEN

b. Aalborg 1914, d. Gentofte 1972

Oak sideboard on runner legs. Front with two foldable doors with brass fittings. Oak interior with shelves and pull-out trays. Model BM 57. Designed 1957. Manufactured 1960–1970s by P. Lauritsen & Son. H. 90 cm. W. 138.5 cm. D. 50 cm.

Literature: Mobilia 1957. DKK 20,000–25,000 / € 2,700–3,350



975



976

976

POUL HENNINGSEN

b. Ordrup 1894, d. Hillerød 1967

"PH-4/3". Patinated browned brass table lamp marked "Patented, PH-4". Green/gold copper shades. Manufactured approx. 1929–1933 by Louis Poulsen. H. 53 cm.

DKK 150,000–175,000 / € 20,000–23,500



977

977
BØRGE MOGENSEN

b. Aalborg 1914, d. Gentofte 1972

Freestanding oak desk with matching drawer section. Desk with pull-out writing leaf in front, drawer section with three drawers with brass handles. Manufactured 1960–1970s by P. Lauritsen & Son. Desk: H. 71 cm. L. 191 cm. W. 84/129 cm. Drawer section: H. 67 cm. W. 46 cm. D. 84 cm. (2)

DKK 20,000–25,000 / € 2,700–3,350

978
ORLA MØLGAARD-NIELSEN

b. Ålborg 1907, d. Hellerup 1993

PETER HVIDT

b. Copenhagen 1916, d. s.p. 1986

“Portex”. A pair of beech armchairs. Seat and back upholstered with original patinated brown leather. Designed approx. 1944. Manufactured 1940–1950s by Fritz Hansen. (2)

DKK 20,000–25,000 / € 2,700–3,350



978



979

979
ARNE JACOBSEN

b. Copenhagen 1902, d. s.p. 1971

"Grand Prix". A set of 12 chairs with laminated beech legs. Seat and back upholstered with Niger leather, stitched along edges. Model 4130. Designed 1957. Manufactured approx. 1960–1970s by Fritz Hansen. (12)

Literature: Carsten Thau & Kjeld Vindum: "Arne Jacobsen", 1998, ill. and referred to p. 397.

DKK 80,000–100,000 / € 10,500–13,500



980

980
POUL KJÆRHOLM

b. Østervrå 1929, d. Hillerød 1980

“Student Table”. Freestanding desk with black lacquered iron frame. Three-layer Oregon pine plywood top. “Floating” black lacquered drawer. Made 1950s by Rud. Rasmussen Cabinetmakers. H. 68 cm. L. 141 cm. W. 85 cm.

Model designed for the Academy of Fine Arts in Copenhagen.

DKK 20,000–25,000 / € 2,700–3,350



981

981
ARNE JACOBSEN

b. Copenhagen 1902, d. s.p. 1971

“Seven Chair”. A swivel armchair with steel frame with castors. Seat, back and armrests upholstered with patinated Niger leather. Model 3217. Designed 1955. Manufactured 1967 by Fritz Hansen, marked.

DKK 20,000 / € 2,700



982

982
ANNA-GRETA SJÖQVIST

b. 1908, d. Skåne 1993, Sweden. 20th century.

Handwoven wool carpet in "rölakan" flatweave technique. Red base, light grey border with polychrome floral decor. Signed AGS. Made approx. 1950-1960s. L. 243 cm. W. 166 cm.

DKK 25,000 / € 3,350

983
TAPIO WIRKKALA

b. 1915, d. 1985

"Rhythmic Plywood". Coffee table with black iron frame. Laminated maple, birch, padouk and oak top with leaf like decorations. Designed 1957. Made approx. 1960s for Asko, Finland, stamped by maker. H. 40.5 cm. L. 124 cm. W. 62 cm.

DKK 20,000-25,000 / € 2,700-3,350



983



984

984
ALVAR AALTO

b. Kuortane 1898, d. Helsinki 1976

A pair of birch "fan leg" stools. Seat upholstered with patinated Niger leather. Model X 601. Designed 1954. Manufactured approx. 1950-1960s by Artek, Finland. Seat H. 46 cm. (2) *DKK 25,000 / € 3,350*



985

985
MÄRTA MÅÅS-FJETTERSTRÖM

b. Kimstad 1873, d. Helsingborg 1941

"Vit Botten" (White Base). Handwoven wool carpet in "rölakan" technique. Geometric polychrome pattern on light base. Signed MMF. Designed before 1919. Made before 1941 by Märta Måås-Fjetterström, Sweden. L. 290 cm. W. 204 cm.

Literature: Tyra Lundgren: "Märta Måås-Fjetterström och väv-verkstaden i Båstad", Stockholm 1968, mentioned p. 111.

DKK 30,000–40,000 / € 4,000–5,350

986
BRUNO MATHSSON

b. Värnamo, Sverige 1907, d. s.p. 1988

"Berlin". Beach double daybed. Mattress upholstered with greyish brown Hallingdal wool, fitted with leather buttons. Neck cushions upholstered with light lambskin. Manufactured 1964 by Karl Mathsson, stamped. H. 45 cm. L. 201 cm. W. 187 cm.

DKK 20,000–25,000 / € 2,700–3,350



986



987

**987
PIERRE FORSELL**

b. 1925, d. 2004

Cylindrical, perforated brass table lamp. Stamped Skultuna 1607. Manufactured approx. 1970s by Skultuna Messingsbruk, Sweden. H. 40 cm.

DKK 15,000 / € 2,000



988

**988
DANISH CABINETMAKER**

A pair of easy chairs with black lacquered wood legs. Sides, seat and back upholstered with light lambskin. Made approx. 1950s, Denmark. (2)

DKK 30,000–40,000 / € 4,000–5,350



989

**989
KNUD NIELSEN**

b. 20th cent., d. 20th cent.

Long prototype ash wood bench, seat with adjustable oak slats. Made 1950s, Denmark. H. 45 cm. L. 250 cm. W. 27.5 cm.

DKK 25,000 / € 3,350



990

990
POUL KJÆRHOLM

b. Østervrå 1929, d. Hillerød 1980

“PK 54”. Dining table with steel frame. Circular top of flintrolled Cippolini marble. White painted six-piece solid maple addition ring with stand included. Designed 1963. Manufactured approx. 1970s by E. Kold Christensen, stamped by maker. H. 65 cm. Diam. 140/210 cm. (2)

Literature: “Poul Kjærholm”, Arkitektens Forlag, 1999, pp. 20–21, 112–115 and 179.

Literature: Frederik Sieck: “Dansk Møbelkunst”, ill. p. 151.

DKK 100,000–125,000 / € 13,500–17,000

991
POUL KJÆRHOLM

b. Østervrå 1929, d. Hillerød 1980

“PK 80”. Daybed with chromed steel frame. Loose mattress upholstered with patinated cognac coloured leather, fitted with buttons. Board of grey painted wood. Designed 1957. Manufactured 1970s by E. Kold Christensen, stamped. L. 193 cm.

DKK 100,000–125,000 / € 13,500–17,000



991



992

992
BARBRO NILSSON

b. Malmö 1899, d. Höganäs 1983

"Marina Grön". Handmade wool carpet in "rya" technique. Pattern in green nuances. Designed 1956. Made after 1942 by AB Märta Måås-Fjetterström, Sweden. L. 460 cm. W. 157 cm.

Literature: Tyra Lundgren: "Märta Måås-Fjetterström och väv-verkstaden i Båstad", Stockholm 1968, mentioned p. 115.

Literature: Viggo Steen Møller: "En bok om Barbro Nilsson", Höganäs 1977, mentioned p. 95. DKK 50,000 / € 6,700



993

993
POUL HENNINGSEN

b. Ordrup 1894, d. Hillerød 1967

"PH-4/3". Rare, early table lamp with patinated nickel plated metal frame marked "Pat. Appl.". Thick switch house. Original green/gold copper and brass shades. Manufactured 1926-1928 by Louis Poulsen. H. 54 cm.

DKK 200,000 / € 27,000



994

994
POUL KJÆRHOLM

b. Østervrå 1929, d. Hillerød 1980

“PK 54”. Dining table with steel frame. Circular flintrolled Porsgrunn marble top. Six-piece solid maple addition ring with stand included. Designed 1963. Manufactured mid 1970s by E. Kold Christensen, stamped by maker. H. 65 cm. Diam. 140/210 cm. (2)

Literature: “Poul Kjærholm”, Arkitektens Forlag, 1999, pp. 20–21, 112–115 and 179.

Literature: Frederik Sieck: “Dansk Møbelkunst”, ill. p. 151.

DKK 150,000–175,000 / € 20,000–23,500

995
POUL KJÆRHOLM

b. Østervrå 1929, d. Hillerød 1980

“PK 9”. A set of six chairs with chromed steel frame. Seat and back upholstered with original, patinated cognac coloured leather. Designed 1960. Manufactured 1970–1980s by E. Kold Christensen, stamped. (6)

DKK 200,000–225,000 / € 27,000–30,000



995

996
GRETE JALK

b. 1920, d. 2006

A pair of rare chairs with black lacquered tubular steel frame. "Floating" seat and back with woven cane. Designed and made 1952 for Laurids Lønborg, with maker's paper label. (2)

Literature: Mobilia august 1963, model ill.

Literature: "Kunsthåndværkets forårsudstilling 1952" (exhibition catalogue), model exhibited and ill. p. 35.

Laurids Lønborg was born in Shanghai, China, in 1917. The son of a Scottish/Chinese mother and a Danish father, he became a Danish citizen and left the family in Shanghai to travel to Denmark to do his military service in 1937. He started his wickerwork business in Denmark during the war, producing straw hats and traditional Christmas bucks. After a few years, he had a team of women producing the wickerwork, and the Christmas bucks were replaced by cane furniture and utility objects in black iron with round pith lashing. In the early 1950s, he began a collaboration with architect Grete Jalk, who designed a chair and a stool with a light iron frame.



The chair was exhibited at Kunsthåndværket's spring exhibition in 1952 and produced in limited numbers. The dining chair version was in use in the home of Jørn Utzon, among others.

Although the chair was not a sales success at the time, Laurids Lønborg's business continued to grow steadily. Working with Danish and Swedish designers, over the next 20 years he produced several bestsellers for the export markets: figurines, candlesticks, storage tins, trays and home textiles in colourful designs, and not least "Champagnebrusen" (The Champagne fizz", a kinetic ball sculpture on a black iron base, which found its way into the home of none other than Pablo Picasso.

Exporting to more than 50 countries, Laurids Lønborg was a pioneer of Danish arts and crafts. Grete Jalk and Laurids Lønborg remained in contact over the years and enjoyed long-standing correspondence. Grete Jalk was the architect and consultant in connection with the interior design of Laurids Lønborg's new home in Østerbro in the late 1950s. DKK 75,000–100,000 / € 10,000–13,500





997

997
POUL HENNINGSEN

b. Ordrup 1894, d. Hillerød 1967

"PH-Twin ring". Chandelier with browned brass frame. Bakelite socket houses, shade fittings marked "PH-2" and "Patented". Four outer 2/2 shade sets and one centre 3/2 shades set. Yellow frosted glass shades and frosted glass bottom bowls. Manufactured 1930s by Louis Poulsen. Diam 68 cm.

Literature: "Light Years Ahead", model p. 195.

DKK 30,000–40,000 / € 4,000–5,350



998

998
GRETE JALK

b. 1920, d. 2006

Rare chair with black lacquered tubular steel frame. "Floating" seat and back with woven cane. Designed and made 1952 for Laurids Lønborg.

Compared with the pair of chairs on lot. no. 996, this model is without bamboo stretcher underneath the seat and with a minimalistic, sweeping frame without cross-stretchers.

Literature: Mobilia august 1963, variant of model ill.

Literature: "Kunsthåndværkets forårsudstilling 1952" (exhibition catalogue), variant of model ill. p. 35.

DKK 30,000–50,000 / € 4,000–6,700





999



999 ©

HANS J. WEGNER

b. Tønder 1914, d. Gentofte 2007

“RY 26”. A Brazilian rosewood sideboard. Front with two sliding doors partly covered with woven cane. Oak interior with shelves, trays and two glass shelves. Designed 1959. Manufactured 1960s by RY møbler. H. 78.5 cm. L. 200 cm. D. 49 cm.

Literature: Mobilia no. 43, February 1959 on advertisement page.

Literature: Ry Møbler katalog 1964.

DKK 60,000–80,000 / € 8,050–10,500

1000

HANS J. WEGNER

b. Tønder 1914, d. Gentofte 2007

“Ox Chair”. Easy chair with tubular steel frame. Sides, seat and back upholstered with patinated black leather. Model AP 46. Designed 1960. Manufactured 1960s by AP-Stolen.

Literature: Noritsugu Oda. “Danish Chairs”, 1999, p. 121.

Literature: Johan Møller Nielsen. “Wegner en dansk Møbelkunstner”, 1965, pp. 71–72.

DKK 30,000–40,000 / € 4,000–5,350



1000



1001

1001
HANS J. WEGNER

b. Tønder 1914, d. Gentofte 2007

“JH 1”. Early patinated brass pendant with pulley. Inside white lacquered. Designed 1952. Manufactured 1950s for Johannes Hansen. Diam. 52 cm.

DKK 20,000–25,000 / € 2,700–3,350

1002
HANS J. WEGNER

b. Tønder 1914, d. Gentofte 2007

“JH 504”. A pair of oak chairs. Seat and back with woven cane. Designed 1950. Made 1950s by cabinetmaker Johannes Hansen, one with maker's metal tag. (2)

Model presented at The Arts & Crafts Spring Exhibition at Designmuseum Danmark, 1950.

Literature: Johan Møller Nielsen. “Wegner - en dansk møbelkunstner” 1965, ill. and mentioned p. 84.

DKK 20,000–25,000 / € 2,700–3,350



1002

1003
HANS J. WEGNER

b. Tønder 1914, d. Gentofte 2007

“AT 314”. Teak dining table with fold down leaves, oak frame with cross legs and brass stretchers. Made 1960s by Andreas Tuck, stamped by maker. H. 72 cm. L. 190/250/310 cm. W. 106 cm.

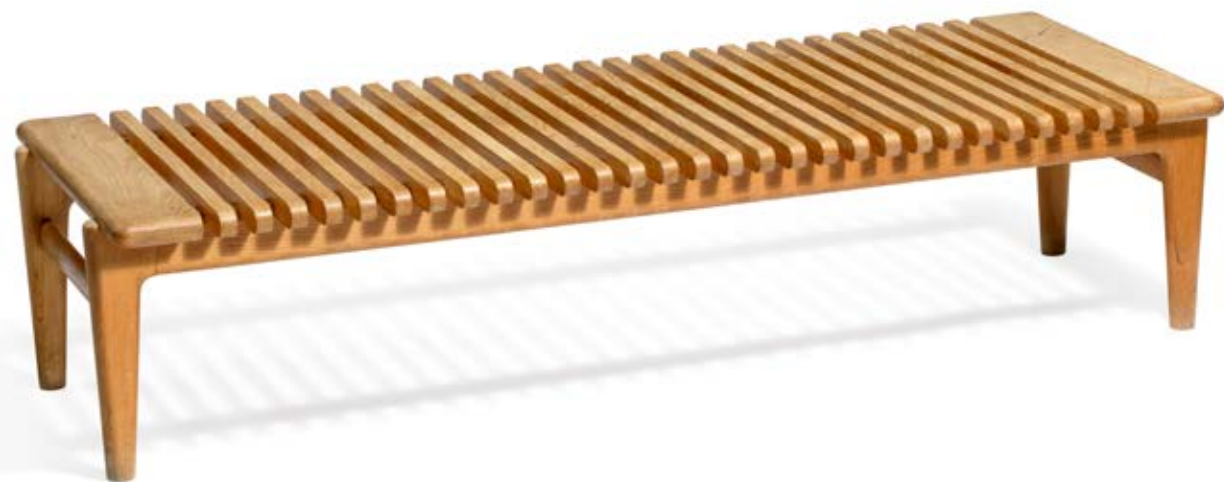
Literature: “Dansk Kunsthåndværk”, no. 1, 1958.

Literature: Christian Holmsted Olesen, “Wegner - bare een god stol”, ill. and mentioned p. 241.

DKK 100,000–125,000 / € 13,500–17,000



1003



1004

1004
HANS J. WEGNER

b. Tønder 1914, d. Gentofte 2007

“JH 589”. Patinated oak bench with pierced seat, mounted on tapering legs. Designed 1953. Made 1950-1960s by cabinetmaker Johannes Hansen, with maker's stamp. H. 31 cm. L. 141 cm. W. 51 cm.

DKK 60,000-80,000 / € 8,050-10,500

1005
HANS J. WEGNER

b. Tønder 1914, d. Gentofte 2007

“JH 521”. Rare easy chair with patinated oak legs. Sides, armrests and back upholstered with original dark grey Savak wool, seat and loose seat cushion with light grey Savak wool. Designed 1953. Made 1950s by cabinetmaker Johannes Hansen.

Rare early version with loose seat cushion.

Model presented at The Copenhagen Cabinetmakers Guild Exhibition at Designmuseum Danmark, 1953.

Literature: Grete Jalk [ed.]: “40 Years of Danish Furniture Design”, vol. 3, pp. 244-245.

Literature: Viggo Steen Møller. “Vore Dages Møbler”. Cabinetmaker Johannes Hansen's 40 year anniversary in 1955, p. 46.

DKK 150,000-200,000 / € 20,000-27,000



1005



INDEX

A

Aalto, Alvar 984

B

Bang, Arne 857, 858

Bender Madsen, Aksel 904, 905, 908

Bernadotte, Sigvard 827, 828

829, 830, 831

Bindesbøll, Thorvald 866

Bonderup, Claus 949

Bryk, Rut 849, 850

C

Clemmensen, Ebbe 950

Clemmensen, Karen 95

D

Danish cabinetmaker 894

926, 958, 988

F

Fisker, Kay 834

Forsell, Pierre 987

Færch, Knud 929

G

Gottlob, Kaj 960

Griegst, Arje 865

Grut, Jeanne 863

H

Hansen, Fritz 907, 923

Hedberg, Hans 851

852, 853, 854

Helseth, Edvin 974

Henningsen, Frits 962

964, 966, 968

Henningsen, Poul 869

882, 890, 902

912, 931, 945

959, 961, 969

976, 993, 997

Hovmand-Olsen, Arne 946

Hvidt, Peter 978

J

Jacobsen, Arne 979, 981

Jacobsen, Ole 925

Jalk, Grete 884, 996, 998

Jensen, Georg 838, 842

Johansson, Judith 948

Johansson, Torsten 898

Juhl, Finn 885

886, 887, 888

889, 891, 892

932, 933, 935

936, 937, 938

940, 941, 942

K

Kapel, Holger 963

Kindt-Larsen, Edvard 903

Kindt-Larsen, Tove 903

Kjær, Jacob 910

Kjærholm, Poul 876

877, 878, 879

880, 980, 990

991, 994, 995

Klint, Kaare 917

918, 919, 920

921, 922, 954

955, 956, 957

Kofod-Larsen, Ib 943, 953

L

Larsen, Ejner 904, 905, 908

Larsen, Kai Lyngfeldt 881

Lundberg, Erik 972

Lysberg, Hansen & Therp 893, 967

M

Mathsson, Bruno 986

Mogensen, Børge 928, 970, 971

973, 975, 977

Moos, Peder 899, 901

Moudt, Bent 883

Måås-Fjetterström, Märta 915, 985

Mølgaard-Nielsen, Orla 978

Møller, Niels O. 947, 951

N

Nielsen, Harald 832, 833, 835

Nielsen, Knud 989

Nilsson, Barbro 897, 992

Nørreklit, Poul 896

P

Panton, Verner 895

Poulsen, Christian 861, 862

Poulsen, Louis 871

R

Rohde, Johan 836

837, 839, 840

841, 843, 916

Rohweder, Jørgen 924

S

Salto, Axel 844, 845, 846

847, 848, 856

Siesbye, Alev Ebüzziya 855, 859, 864

Sjöqvist, Anna-Greta 982

Svensson, Alf 944, 952

Swedish design 965

T

Thorup, Torsten 949

V

Valentiner, Th. 906, 927

Vasegaard, Gertrud 860

Vestergaard Jensen, Helge 900

Vodder, Niels 934, 939

Volther, Poul M. 930

W

Wanscher, Ole 909

911, 913, 914

Wegner, Hans J. 867, 868

870, 872, 873

874, 875, 999

1000, 1001, 1002

1003, 1004, 1005

Wirkkala, Tapio 983

NORTHERN LIGHT

– the Artists' Colony at Skagen

Online Auction 17 June 2024
at bruun-rasmussen.dk

Disse købsvilkår udgør Bruun Rasmussen Kunstauktioner A/S' ("BRK") købsvilkår for Liveauktioner og er gældende fra 1. februar 2017.

BRK kan til enhver tid ændre købsvilkårene.

Ved bud accepterer budgiver/køber at være bundet af de til enhver tid gældende købsvilkår, som fremgår på bruun-rasmussen.dk. Købsvilkårene gælder både i forhold til erhvervsdrivende og forbrugere.

FØR AUKTIONEN

1 VURDERING AF GENSTANDE

1.1 Alle udbudte genstande er vurderet af BRK. Vurderingen er et skøn over det forventede hammerslag, jf. punkt 5.3. Vurderingen er baseret på tidligere salg af samme type genstande og erfaringer hos BRK. Hammerslag kan derfor falde højere eller lavere ud end vurderingen.

2 BESKRIVELSE AF GENSTANDE

2.1 Udbudte genstande præsenteres med fotos og beskrivelse i kataloger og på bruun-rasmussen.dk. Beskrivelsen foretages efter bedste overbevisning af BRK og ud fra en nøje undersøgelse efter den på salgstidspunktet herskende opfattelse blandt eksperter.

2.2 De udbudte genstande er af en alder og art, der bevirker, at de ofte er behæftede med slitage, mangler, beskadigelser og reparationer. Som udgangspunkt sælges alt som brugte genstande, og derfor indeholder beskrivelsen i kataloget og på bruun-rasmussen.dk ikke en redegørelse for ovenstående punkter eller genstandens stand.

2.3 I visse tilfælde vælger BRK at beskrive en genstands oprindelse. Det sker, hvis en tidligere ejer er offentlig kendt, og/eller hvis historien om et tidligere ejerskab belyser genstanden og dens art. Omvendt sker det også, at sådanne informationer udelades fra beskrivelsen, f.eks. for at imødekomme sælgers ønske om diskretion.

2.4 Vurderingen og beskrivelsen kan blive revideret forud for auktionen. Ændringer offentliggøres på bruun-rasmussen.dk

3 EFTERSYN

3.1 Udbudte genstande udstilles op til auktionen i et show-room hos BRK. Potentielle budgivere opfordres til at se genstanden efter i detaljer og har selv ansvaret for at forvise sig om dens stand på disse eftersyn, hvor der også er mulighed for at rådføre sig hos vurderingssagkyndige.

3.2 Hvis en potentiel køber ikke har mulighed for at besigtige genstanden ved selvsyn, kan der i de fleste tilfælde udfærdiges en konditionsrapport. Beskrivelsen heri er foretaget efter BRK's bedste overbevisning, men er ikke baseret på videnskabelige undersøgelser. En konditionsrapport tjener blot som identifikation og er ment som en hjælp til budgivere, der ikke selv har mulighed for at besigtige genstanden på eftersynet.

UNDER AUKTIONEN

4 BRK'S ROLLE

- 4.1 Salget af en genstand formidles af BRK på vegne af sælger. BRK afhænder altid udbudte genstande til den højst mulige pris under budgivningen.
- 4.2 Udbudte genstande kan have en med sælger aftalt mindstepris, hvorunder den ikke kan sælges. Denne pris er fortrolig.
- 4.3 Liveauktioner overværes af en af Justitsministeriets beskikket auktionsleder, der sikrer, at auktionerne går retmæssigt for sig.

5 BUDGIVNING

- 5.1 Auktionerne afvikles i danske kroner. De tilnærmelsesvis beløb i euro/US dollar vil blive oplyst på skærme i auktionssalen og i øvrigt på opfordring.
- 5.2 Auktionarius bestemmer overbuds størrelse og i hvilket tempo, auktionen afvikles. Overbud stiger normalt med 5 % - 10 % i forhold til det foregående bud. Normalt sælges der 50-100 katalognumre i timen.
- 5.3 Hammerslag betegner både det forhold, at auktionarius slår med hammeren og derved markerer budgivningens afslutning, og den pris (budsum), den udbudte genstand sælges til. Se punkt 7 vedrørende beløb, der tillægges hammerslaget.
- 5.4 Køber er den budgiver, der opnår hammerslag. Ved hammerslaget indgås på baggrund af disse købsvilkår en bindende købs-/salgsaftale.
- 5.5 Bydes på andres vegne, hæfter budgiver som selvskyldnerkautionist for handlen.
- 5.6 Genstande købes som beset, og køber har uanset budtype ingen fortrydelsesret, heller ikke efter forbrugeraftaleloven.
- 5.7 Budgiver skal efter anvisninger fra BRK identificere sig og dokumentere sin betalingsdygtighed, f.eks. ved registrering af gyldigt betalings-/kreditkort, bankgaranti eller indbetaling af depositum.
- 5.8 BRK kan nægte at acceptere et bud, hvis en tilstrækkelig sikkerhed for betaling mangler, eller hvis budgiver tidligere har misligholdt betalingsforpligtigelser ved køb hos BRK.
- 5.9 Auktionslederen træffer i samråd med auktionarius afgørelse i alle tvivlstilfælde omkring budgivningen.

6 BUDTYPER

6.1 Der er følgende muligheder for at afgive bud:

PERSONLIGT FREMMØDE:

Registrering og udlevering af bydeskilt foregår ved indgangen til auktionssalen. Når budgiver ønsker at byde, signaleres dette til auktionarius ved at række bydeskiltet i vejret og tydeligt fremvise dets nummer.

KOMMISSIONSBUD:

Det ønskede maksimale bud kan afgives via bruun-rasmussen.dk frem til auktionens start eller pr. e-mail, fax eller telefon, så budet er modtaget senest 24 timer forud for auktionens start. En kommissionær byder på budgivers vegne inden for rammene af det ønskede maksimalbud og vil altid afgive lavest muligt overbud.

TELEFONBUD:

I forhold til visse genstande er der mulighed for at blive ringet op af en medarbejder fra BRK, der vil byde på budgivers vegne under auktionen. Servicen kan bestilles via bruun-rasmussen.dk indtil tre timer før auktionens start.

LIVE BIDDING:

Det er muligt at følge auktionen live og byde med via bruun-rasmussen.dk

FORAUKTION:

Visse Liveauktioner indledes med en Onlineauktion. De højeste bud på Onlineauktionen danner udgangspunktet på den efterfølgende Liveauktion.

EFTER AUKTIONEN

7 BELØB, DER TILLÆGGES HAMMERSLAGET

- 7.1 I tillæg til hammerslaget, jf. punkt 5.3, skal køber for den enkelte genstand betale købersalær og, hvis betingelserne er opfyldt, de øvrige beløb, der er nærmere beskrevet nedenfor. Det samlede beløb, som køber skal betale til BRK, benævnes "købesummen".
 - 7.1.1 Købersalær: Hammerslaget tillægges et salær til BRK. På Liveauktioner udgør salæret 25,6 % af hammerslaget + moms af salæret, i alt 32 %. For frimærker og mønter udgør salæret 20 % af hammerslaget + moms af salæret, i alt 25 %.
 - 7.1.2 "LIVE bidding": BRK's "LIVE bidding"-software via bruun-rasmussen.dk er gratis at benytte for budgivere.
 - 7.1.3 Fuldmoms: Visse genstande handles efter de gældende regler om fuldmoms. Her beregnes der moms på 25 % af både hammerslag og salær. Disse genstande er i beskrivelsen i kataloget og på bruun-rasmussen.dk mærket med symbolet "a" eller med teksten: "Dette emne handles i fuldmoms".
 - 7.1.4 Kunstnerafgift: Ifølge dansk lovgivning om ophavsret skal der opkræves kunstnerafgift (følgeretsvederlag) for værker af nyere danske og visse udenlandske kunstnere, som enten er nulevende eller ikke har været døde i mere end 70 år. Kunstnerafgiften opkræves på vegne af VISDA. Disse værker er i kataloget mærket med "ARR" (Artist's Resale Right) og på bruun-rasmussen.dk med teksten "Dette emne er belagt med kunstnerafgift". Kunstnerafgiften tillægges hele hammerslaget + salær (ekskl. moms), når beløbet overstiger 300 euro, som angivet nedenfor:

Hammerslag + salær (ekskl. moms)	Betalingsssats
300,01 - 50.000 euro	5%
50.000,01 - 200.000 euro	3%
200.000,01 - 350.000 euro	1%
350.000,01 - 500.000 euro	0.5%
over 500.000 euro	0.25%

Kunstnerafgiften kan ikke overstige 12.500 euro (ekskl. moms) for den enkelte genstand. Afgiften skal betales i danske kroner, og omregningskursen (EUR/DKK) fastsættes af VISDA.

7.1.5 Betalings-/kreditkortgebyr: BRK forbeholder sig ret til at opkræve de af indløsningselskaberne pålagte betalings-/kreditkortgebyrer. Satserne fremgår ved budgivning via bruun-rasmussen.dk og ved betaling.

8 BETALINGSFRIST

8.1 Købesummen forfalder til betaling ved hammerslaget, og køber har herefter otte dage til at betale købesummen til BRK.

9 BETALINGSMÅDER

9.1 Betaling kan ske på følgende måder:

A: Med betalings-/kreditkort (Dankort, Visa, MasterCard, Maestro, Diners Club, JCB og China UnionPay) eller kontant (op til 14.999 kr.) i auktionssalen eller efterfølgende i en afdeling hos BRK. Bemærk, at vi ikke modtager 500-eurosedler.

B: Med betalings-/kreditkort (Dankort, Visa, MasterCard, Maestro, Diners Club og JCB) på bruun-rasmussen.dk under købers personlige side.

C: Via bankoverførsel til BRK's konto i Danske Bank: 4183 4310970638 · Swift/BIC: DABADKKK · IBAN: DK4130004310970638.

10 MOMSFRTAGELSE, -BETALING OG -DEPONERING

10.1 Visse købere kan vælge hvilken momstype, der skal være gældende for handlen. Valget skal meddeles BRK senest to hverdage efter købet og kan ikke omgøres.

A: Momsregistrerede virksomheder i Danmark kan vælge, at handlen skal ske efter reglerne om fuldmoms, jf. punkt 7.1.3.

B: Momsregistrerede virksomheder i et andet EU-land kan fritages for dansk moms, når det kan dokumenteres, at genstanden er transporteret til den udenlandske adresse, som køber har oplyst over for BRK, og som er anført på fakturaen. I sådanne tilfælde skal der afregnes moms efter de gældende regler i det land, hvor køber er momsregistreret. Det tilrådes at søge oplysning hos de lokale myndigheder. Køber kan undlade at gøre brug af muligheden for momsfritagelse og i stedet betale dansk brugtmoms/fuldmoms.

C: Købere med bopæl uden for EU kan fritages for dansk moms, når det kan dokumenteres, at genstanden er transporteret ud af EU. BRK udsteder så vidt muligt og mod gebyr de fornødne eksportpapirer, som skal fremvises ved toldmyndighederne. Køber kan undlade at gøre brug af muligheden for momsfritagelse og i stedet betale dansk brugtmoms/fuldmoms.

10.2 Momsregistrerede virksomheder i et andet EU-land og købere med bopæl uden for EU skal deponere den danske moms af fakturabeløbet hos BRK, indtil eksporten er gennemført på dokumenteret lovpligtigt vis. Foretages eksporten af en af BRK godkendt speditør, skal momsen ikke deponeres. Se listen over godkendte speditører på bruun-rasmussen.dk

11 OVERSKRIDELSE AF BETALINGSFRIST

11.1 Overskrides en betalingsfrist, herunder fristen i punkt 8, opkræves morarenter, som beregnes efter Nationalbankens officielle udlånsrente + 8 % om året af det skyldige beløb.

11.2 Betales købesummen inkl. renter ikke senest ti dage efter, at der er fremsat påkrav herom, er BRK berettiget til at søge købesummen betalt ved modregning i depositum/ved træk på bankgaranti eller at hæve købet.

11.3 Hæves købet, er BRK berettiget til at sælge genstanden på en ny auktion og kræve omkostningerne og en eventuel difference mellem hammerslag (samt salær), der er opnået på de to auktioner, betalt af den misligholdende køber.

11.4 Alle forfaldne krav (inkl. omkostninger), som ikke betales rettidigt, kan BRK i tillæg til inkasso søge inddrevet på følgende måder:

A: For købers regning sælge genstande indleveret til auktion af eller på vegne af køber. Salget kan gennemføres uden hensyntagen til en aftalt mindstepris. Genstande indleveret til auktion kan ikke kræves udleveret, så længe forfalden gæld henstår ubetalt.

B: Inddrage købers tilgodehavende hos BRK, herunder tilgodehavende fra salg af genstande indleveret af eller på vegne af køber, uanset om et sådant tilgodehavende stammer fra auktionssalg, som ligger forud for eller efter tidspunktet for købers misligholdelse.

12 AFHENTNING OG UDLEVERING

- 12.1 Ejendomsretten til en købt genstand overgår til køber, når hele købesummen inkl. eventuelle renter og gebyrer er betalt, og først herefter kan udlevering af genstanden finde sted.
- 12.2 Ved udlevering af en købt genstand forbeholder BRK sig retten til at kræve tilfredsstillende dokumentation for, at den person, som ønsker genstanden udleveret, enten selv er køberen eller er bemyndiget af køberen til at få genstanden udleveret.
- 12.3 Udlevering af visse våben kræver forevisning af gyldig våbentilladelse. Sådant krav er angivet med teksten "Køb af dette emne kræver forevisning af gyldig våbentilladelse" i kataloget og på bruun-rasmussen.dk
- 12.4 Købte genstande henligger fra hammerslaget for købers regning og risiko. Afhentning skal ske senest otte hverdage efter sidste auktionsdag.
- 12.5 Foretages afhentningen ikke rettidigt, transporteres de købte genstande til et lager for købers regning og risiko. Transporten koster 150 kr. inkl. moms pr. genstand, og opbevaringen koster 150 kr. inkl. moms pr. genstand pr. påbegyndt uge. Henligger en genstand uafhængt i så lang tid, at lagerlejen overstiger genstandens værdi, er BRK berettiget til for købers regning og risiko og uden hensyn til mindstepris at bortauktionere genstanden eller sælge den underhånden. Køber hæfter til transport og lagerleje, der ikke dækkes ved sådant salg.
- 12.6 I henhold til gældende hvidvasklovgivning skal køber i visse tilfælde udlevere identitetsoplysninger og fremvise billed-id til BRK, før køber kan få den købte genstand i sin besiddelse

13 FORSENDELSE

- 13.1 Er køber forhindret i selv at afhente en genstand, tilbyder BRK for købers regning og risiko at emballere og arrangere forsendelse enten med post eller speditør. Se punkt 12.2 angående legitimation.

14 EKSPORTTILLADELSE

- 14.1 For at sikre at dansk kulturarv af afgørende betydning forbliver i Danmark, kan Kulturværtdiudvalget for visse genstandes vedkommende nedlægge eksportforbud. Hvis køber ønsker at eksportere en genstand ud af Danmark, hvor der er nedlagt et eksportforbud, annulleres købet, og Kulturværtdiudvalget er forpligtet til at overtage genstanden til den pris, der blev opnået på auktionen. Køber kan ikke rejse krav mod BRK som følge af, at et eksportforbud bliver nedlagt.
- 14.2 Visse genstande er omfattet af Washingtonkonventionen, også kendt som CITES, der har til formål at stoppe ulovlig handel med genstande fremstillet af udryddelsestruede vilde dyr og planter. Såfremt en genstand er omfattet af Washingtonkonventionen, CITES, liste 1, vil det fremgå af beskrivelsen på bruun-rasmussen.dk og være markeret med symbolet "©" i kataloget. Følgende regler gør sig gældende:
 - A: Genstande omfattet af Washingtonkonventionen, CITES, liste 1, må kun handles, når der foreligger en dispensation i form af et såkaldt CITES-salgscertifikat. BRK indhenter det fornødne certifikat fra Naturstyrelsen, der tillader handel og eksport til lande inden for EU. Dog kan genstande, som er færdigforarbejdet før 1947, frit handles inden for EU uden et certifikat.
 - B: Det er alene genstande omfattet af Washingtonkonventionen, CITES, liste 1, som er særkilt markeret på bruun-rasmussen.dk og i kataloget. Genstande omfattet af Washingtonkonventionen, CITES, liste 2, der frit kan sælges og transporteres inden for EU, er ikke særkilt markeret.
 - C: Ved eksport til lande uden for EU skal der uanset årstallet for genstandens færdigforarbejdning altid indhentes en CITES-reeksporttilladelse fra Naturstyrelsen,

når genstanden er omfattet af Washingtonkonventionen, CITES, liste 1 og 2. Denne eksporttilladelse kan normalt indhentes problemfrit, når liste 1-genstande enten er solgt med et CITES-salgscertifikat eller er færdigforarbejdet før 1947. Liste 2-genstande opnår ligeledes normalt problemfrit en reeksporttilladelse. Eventuelle omkostninger, der opkræves af de danske myndigheder i forbindelse med udstedelse af en reeksporttilladelse, vil blive pålagt købers faktura.

D: I forbindelse med eksport til lande uden for EU kan særlige regler gøre sig gældende ifm. den efterfølgende import, og køber opfordres til at indhente oplysninger fra egne myndigheder.

15 MANGLER VED KØBTE GENSTANDE

- 15.1 Købelovens mangelsregler kan finde anvendelse. Nedenfor er angivet et ikke udtømmende uddrag af købers mangelsbeføjelser.
- 15.2 Køber er berettiget til at annullere et køb, hvis beskrivelsen har været behæftet med væsentlige fejl, der har ført til et højere hammerslag, end en korrekt beskrivelse ville have resulteret i. I sådanne tilfælde vil den samlede købesum blive refunderet. Køber kan ikke kræve betaling af renter af købesummen eller kræve dækning af anden udgift eller tab.
- 15.3 Et køb kan ikke annulleres, og køber kan ikke kræve købesummen refunderet eller rejse noget andet krav mod BRK, hvis beskrivelsen af genstanden er i overensstemmelse med punkt 2, eller hvis en påvisning af falskneri havde krævet brug af videnskabelige metoder, der enten ikke var tilgængelige på salgstidspunktet, havde været uforholdsmæssigt omkostningskrævende at anvende eller havde ført til beskadigelse af den pågældende genstand.
- 15.4 Krav om annullering af et køb skal meddeles BRK, når køber er blevet bekendt med det forhold, der berettiger køber til at annullere købet, dog senest to år fra den seneste afhentningsdato efter punkt 12.4. Den købte genstand skal returneres til BRK i samme stand som på hammerslagstidspunktet. Overholdes disse betingelser ikke, mister køber retten til at annullere købet og kan ikke kræve købesummen refunderet. Køber er selv ansvarlig for at betale de omkostninger, der er forbundet med returnering af genstanden.

16 INDSIGELSE- OG ANSVARSBEGRÆNSNING

- 16.1 BRK tager forbehold for fejl, tekniske vanskeligheder samt udefrakommende misbrug eller forstyrrende påvirkning under auktionen. Budgetgiver kan ikke rejse noget krav mod BRK som følge heraf.
- 16.2 Køber er i alle tilfælde selv ansvarlig for korrekt betaling af moms og andre afgifter, gebyrer mv. i overensstemmelse med danske og udenlandske regler.
- 16.3 Medmindre andet fremgår af disse købsvilkår, kan BRK aldrig blive ansvarlig for budgetgivers/købers driftstab, avancetab, andre indirekte tab eller følgeskader.

17 PERSONDATAPOLITIK

- 17.1 Det er vigtigt for BRK at sikre fortrolighed og sikkerhed omkring budgetgivers/købers personlige oplysninger. Persondatapolitikken fremgår af bruun-rasmussen.dk.

18 KLAGE, TVISTLØSNING OG LOVVALG

- 18.1 Har budgetgiver/køber en klage, kan der altid rettes henvendelse til BRK.
- 18.2 Lykkes det ikke at finde en løsning, kan forbrugere sende en klage til Nævnenes Hus, Toldboden 2, 8800 Viborg, e-mail: naevneneshus.dk. Forbrugere med bopæl i et andet EU-land end Danmark kan klage til EU-Kommissionens online klageportal via hjemmesiden: <http://ec.europa.eu/odr>.
- 18.3 Tvister skal indbringes i Danmark ved Københavns Byret, jf. dog punkt 18.2. I forbrugerforhold gælder de ufravigelige værnetingsregler.

Bruun Rasmussen Kunstauktioner

Rev. 03.24

CONDITIONS OF PURCHASE – LIVE AUCTIONS

These conditions of purchase represent Bruun Rasmussen Kunstauktioner A/S' ("BRK") conditions of purchase for Live Auctions and are effective from 1 January 2017. BRK may modify the conditions of purchase at any time.

By bidding, the bidder/buyer accepts the current conditions of purchase as they appear on bruun-rasmussen.dk. The conditions of purchase are applicable to both business owners and consumers.

BEFORE THE AUCTION

1 VALUATION OF ITEMS

- 1.1 All the offered items are valued by BRK. The valuation is an estimate based on the expected hammer price, see paragraph 5.3. The estimate is based on the previous sale of similar items as well as BRK's past experience. The hammer price can therefore be higher or lower than the estimated price.

2 DESCRIPTION OF ITEMS

- 2.1 Items up for auction are presented with photographs and descriptions in catalogues and on bruun-rasmussen.dk. The description is worded according to the best of BRK's knowledge and based on detailed research in accordance with the prevailing views among experts at the time of sale.
- 2.2 The items up for auction are of an age and nature that often mean that they are in a worn, repaired or damaged condition. As a starting point everything is sold as used items. For this reason, the descriptions in the catalogue or at bruun-rasmussen.dk do not include a statement regarding the above or the condition of the item.
- 2.3 In some cases, BRK may choose to describe an item's provenance. Such a description is made if a former owner is publicly known and/or if the story of previous ownership sheds further light on the item and its background. In other cases, such information is left out of the description, for instance to meet the seller's wish for privacy.
- 2.4 It is possible that the estimate and description are revised prior to the auction. Changes are published on BRK's website.

3 PREVIEW

- 3.1 Items up for auction are presented prior to the auction in one of BRK's showrooms. Potential bidders are encouraged to inspect the items closely and are responsible for determining the condition of the items at these previews, where they also have the opportunity to consult with the valuation experts.
- 3.2 If a potential buyer does not have the opportunity to inspect the item personally, a condition report can be drafted in most cases. The description in this report has been made according to BRK's honest conviction but is not based on scientific studies. A condition report only serves as an identification and is meant as an aid to bidders who do not have the opportunity to inspect the item at the preview.

DURING THE AUCTION

4 THE ROLE OF BRK

- 4.1 The sale of an item is facilitated by BRK on behalf of the seller, and BRK always sells items up for auction at the highest price offered during the bidding round.

- 4.2 Items up for auction can have a reserve price that has been agreed upon with the seller. The price is confidential and the item cannot be sold below this price.
- 4.3 The Live Auctions are presided over by one of the Danish Ministry of Justice's appointed auctioneers, ensuring that the auctions proceed correctly and lawfully.

5 BIDDING

- 5.1 The currency used while the auctions take place is Danish kroner. The approximate amount in euro/US dollars is shown on screens in the saleroom and also on request.
- 5.2 The auctioneer determines the size of the bid increment and the pace of the auction. Bid increments usually rise by 5% - 10% compared to the previous bid. Approximately 50-100 auction lots are sold per hour.
- 5.3 The hammer price refers both to the gavel used by the auctioneer that signifies the end of a bidding round on an item and to the price (bidding amount) that the item up for auction is sold for. See paragraph 7 regarding amounts added to the hammer price.
- 5.4 The buyer is the bidder that submits the highest bid, thereby obtaining the hammer price. At the moment the hammer price is determined, a binding purchase/sale agreement is entered into based on these conditions of purchase.
- 5.5 If bids are made on behalf of others, the bidder serves as surety for the transaction.
- 5.6 Items are purchased in their present state and condition, and regardless of the type of bidding the buyer has no right to cancel his purchase, neither under the Danish Consumer Contracts Act.
- 5.7 Bidders are required, in accordance with BRK's instructions, to identify themselves and document their ability to pay, for instance by registration of a valid debit/credit card, bank guarantee or a deposit.
- 5.8 BRK may refuse to accept a bid if a sufficient guarantee of the bidder's ability to pay is not provided, or if the bidder has previously defaulted on payment obligations on purchases from BRK.
- 5.9 The overseeing auctioneer will, in consultation with the auctioneer at the podium, decide what to do in matters of dispute concerning a bidding round.

6 TYPES OF BIDDING

- 6.1 Bidding options:
 - IN PERSON:**
Registration and obtaining the bidding paddle take place at the entrance to the saleroom. When the bidder wishes to bid, it is signalled to the auctioneer on the podium by raising the bidding paddle in the air and clearly displaying its number.
 - COMMISSION BIDS:**
The intended maximum bid can be submitted via bruun-rasmussen.dk until the start of the auction or by e-mail, fax or phone, so that the bid is received no later than 24 hours prior to the start of the auction. A commission agent bids on behalf of the bidder within the limits of the stated maximum bid. The commission agent will always bid the lowest possible amount to achieve the hammer price.

TELEPHONE BID:

With certain items it is possible to have a BRK employee call the bidder over the phone. The employee will then bid on behalf of the bidder during the auction. The service can be booked via bruun-rasmussen.dk up until three hours before the auction is set to begin.

LIVE BIDDING:

It is possible to follow the auction live and bid on the auction lots via bruun-rasmussen.dk.

PRE-AUCTION:

Some Live Auctions are preceded by an online auction. The highest bids from the online auction then represent the starting bids at the following Live Auction.

AFTER THE AUCTION

7 AMOUNTS ADDED TO THE HAMMER PRICE

- 7.1 In addition to the hammer price, see paragraph 5.3, the buyer pays a buyer's premium for the individual items as well as the other amounts described below if the conditions for these are applicable. The total amount that the buyer pays to BRK is called the "purchase price".
- 7.1.1 Buyer's Premium: The hammer price always includes an additional fee to BRK. At the Live Auctions, the fee is 25,6% of the hammer price + VAT of the fee, 32% in total. For stamps and coins, the fee is 20% of the hammer price + VAT of the fee, a total of 25%.
- 7.1.2 "LIVE Bidding": BRK's "LIVE Bidding" software is free to use for bidders on bruun-rasmussen.dk.
- 7.1.3 Full VAT: Certain items are sold at auction in accordance with the current rules regarding full VAT. In such a situation, a VAT of 25% is imposed on both the hammer price and the buyer's premium. These items are marked in the catalogue and on bruun-rasmussen.dk with the symbol "***", or with the text: "This item is subject to full VAT".
- 7.1.4 Artist's Resale Right: In accordance with Danish copyright law, a royalty fee covering the Artist's Resale Right has to be charged for works by newer Danish artists, and some foreign artists, who are either alive or have not been dead for more than 70 years. The royalty fee covering the Artist's Resale Right is charged on behalf of VISDA (Visual Rights Denmark). These works are marked "ARR" in the printed catalogue, and on bruun-rasmussen.dk the description of the works includes the text: "This lot is subject to the Artist's Resale Right". The royalty fee covering the Artist's Resale Right is added to the hammer price + the buyer's premium (excluding VAT) if the amount exceeds EUR 300, as indicated below:

Hammer price + buyer's premium (ex. VAT)	Payment Rate
300,01 - 50,000 euro	5%
50,000,01 - 200,000 euro	3%
200,000,01 - 350,000 euro	1%
350,000,01 - 500,000 euro	0.5%
over 500,000 euro	0.25%

The royalty fee covering the Artist's Resale Right cannot exceed EUR 12,500 (excluding VAT) for each item. The fee must be paid in Danish kroner, and the conversion rate (EUR/DKK) is set by VISDA.

- 7.1.5 Debit/Credit Card Fee: Amounts Added to the Hammer Price: BRK reserves the right to charge the debit/credit card fees imposed by the payment services companies. The rates will appear when bidding on bruun-rasmussen.dk and at payment.

8 PAYMENT DEADLINE

- 8.1 The purchase price falls due after the hammer price has been determined, and then the buyer has eight days to pay BRK the purchase price.

9 PAYMENT METHODS

- 9.1 The payment can be made in the following ways:
- A: With debit/credit card (Visa, MasterCard, Maestro, Diners Club, China UnionPay and JCB) or cash (up to DKK 14.999) in the saleroom or subsequently at one of

BRK's locations. Please note that we do not accept EUR 500 banknotes.

- B: With debit/credit card (Dankort, Visa, MasterCard, Diners Club and JCB) via BRK's website on the buyer's personal page.
- C: By bank transfer into BRK's account with Danske Bank: 4183 4310970638 · Swift/BIC: DABADKKK · IBAN: DK4130004310970638.

10 VAT EXEMPTION, PAYMENT & DEPOSIT

- 10.1 Some buyers can choose which type of VAT should apply to the transaction. The choice has to be communicated to BRK no later than two working days after the purchase and cannot be changed subsequently.
- A: Businesses in Denmark registered for VAT can decide that the transaction is to be conducted in accordance with the rules for full VAT, see paragraph 7.1.3.
- B: Businesses registered for VAT in another EU Member State can be exempted from paying Danish VAT if it can be proved that the item has been transported to the foreign address that the buyer has registered with BRK and which is written on the invoice. In such cases, the VAT should be settled according to the rules applicable in the country where the buyer is registered for VAT. It is advisable to consult with the local authorities. The buyer can decide not to be exempt from regular VAT and instead pay Danish VAT on second-hand goods/full VAT.
- C: Buyers residing outside the EU can be exempted from Danish VAT if it can be proved that the item has been transported out of the EU. To the extent possible and for a fee, BRK can issue the necessary export documents for the customs authorities. The buyer may decide not to be exempt from regular VAT and instead pay Danish VAT on second-hand goods/full VAT.
- 10.2 Companies registered for VAT in another EU Member State and buyers residing outside the EU must deposit the Danish VAT on the amount invoiced with BRK until the export process has been completed in a documented, lawful fashion. If the export is undertaken by one of BRK's authorized forwarding agents, the VAT does not have to be deposited. See the list of authorized forwarding agents on bruun-rasmussen.dk.

11 OVERDUE PAYMENTS

- 11.1 If payment is made after a deadline, including the deadline specified in paragraph 8, interest on overdue payments will be charged and estimated in accordance with the Danish Central Bank's official lending rate + 8% per year on the amount due.
- 11.2 If the purchase price, including interest, has still not been paid ten days after the demand for payment has been made, BRK is entitled to seek the purchase price paid by making a set-off against the deposit/by drawing on the bank guarantee or to cancel the purchase.
- 11.3 If the purchase is cancelled, BRK is entitled to sell the item at a new auction and demand the costs and any difference between the new and the earlier hammer price (including the buyer's premium) covered by the defaulting buyer.
- 11.4 In addition to debt collection, BRK may seek recovery of all due claims (including costs) not paid in a timely manner in the following ways:
- A: Making the buyer cover the costs of selling items consigned to auction by or on behalf of the buyer. The sale can be conducted without regard to an agreed reserve price. Items consigned for auction cannot be collected as long as overdue debts are unpaid.
- B: Seizing the buyer's remaining balance with BRK, including the balance from the sale of items consigned by or on behalf of the buyer, regardless of whether such receivables derive from auction sales prior to or after the date of the buyer's default on the payment.

12 PICK-UP & COLLECTION

- 12.1 The title to a purchased item passes to the buyer when the full purchase price, including any interest and fees, has been paid, and only then can the collection of an item take place.
- 12.2 In connection with the collection of a purchased item, BRK reserves the right to demand satisfactory documentation that the person who wants to pick up the item is either the buyer himself/herself or authorized by the buyer to receive the item on his/her behalf.
- 12.3 The collection of certain weapons requires presentation of a valid weapons certificate. Items with such requirements are listed with the text: "The purchase of this item requires the presentation of a valid weapons certificate" in the catalogue and on bruun-rasmussen.dk.
- 12.4 Purchased items are stored after the auction at the buyer's expense and risk. Pick-up must take place no later than eight working days after the last auction day.
- 12.5 If the item(s) is/are not picked up on time, the purchased items will be transported to a warehouse at the buyer's risk and expense. The transport costs are DKK 150 including VAT per item and the storage costs are DKK 150 including VAT per item for each week or part of a week. If an item is left unclaimed for an amount of time that results in the storage costs exceeding the value of the item, BRK will be entitled to, at the buyer's expense and risk and without regard to the reserve price, sell the item at an auction or privately. The buyer is still liable for the costs of transportation and storage not covered by such sale.
- 12.6 In accordance with current anti-money laundering laws, the buyer must in certain cases submit personal information and present a photo ID to BRK before the buyer can have the purchased item placed in his possession.

13 SHIPPING

- 13.1 If the buyer is unable to pick up the purchased item, BRK offers to pack and arrange delivery either by mail or by freight forwarder at the buyer's risk and expense. See paragraph 12.2 regarding identification.

14 EXPORT LICENSE

- 14.1 To ensure that Danish cultural heritage of vital importance remains in Denmark, the Danish Cultural Assets Commission can place an export ban on certain items. If the buyer wishes to export an item that is subject to an export ban in Denmark, the purchase will be cancelled and the Danish Cultural Assets Commission is obliged to acquire ownership of the item for the price obtained at auction. The buyer cannot raise any claims against BRK as a result of an export ban.
- 14.2 Certain items are included in the Washington Convention, also known as CITES. The purpose of CITES is to stop the trade of items made with endangered species and flora. If the item is included in the Washington Convention, CITES, Appendix 1, this will appear in the description of the item on bruun-rasmussen.dk and be marked with the symbol "☉" in the catalogue. The following rules are applicable:
- A: Items that are included in the Washington Convention, CITES, Appendix 1, can only be traded when a dispensation in the form of a CITES certificate has been obtained. BRK obtains the required certificate from the Danish Nature Agency that allows trade and export to countries within the EU. Items that were produced before 1947 can, however, be freely traded within the EU without a certificate.
- B: It is only items included in the Washington Convention, CITES, Appendix 1 that are marked individually on bruun-rasmussen.dk and in our catalogue. Items included in the Washington Convention, CITES, Appendix 2, which can be freely sold and transported within the EU, are not individually marked.
- C: Export to countries outside the EU must, regardless of the year of the item's production, always procure a CITES re-export permit from the Danish Nature Agency if the item is included in the Washington Convention, Appendix 1 and 2. This export permit can usually be

obtained without problems, if the item is either sold with a CITES certificate or was made prior to 1947. Appendix 2 items usually also receive a re-export permit without problems. Any fees charged by the Danish authorities in connection with the issuance of a re-export permit will be added to the buyer's invoice.

D: In connection with export to other countries outside the EU, special rules may apply concerning the subsequent import, and the buyer is encouraged to consult the relevant local authorities about this issue.

15 DEFECTS IN THE PURCHASED ITEMS

- 15.1 The lack of conformity rules of the Danish Sale of Goods Act may apply. Below is a non-exhaustive excerpt of the buyer's remedies in regard to lack of conformity.
- 15.2 The buyer is entitled to cancel a purchase if the description contained significant errors that have led to a higher hammer price than a correct description would have resulted in. In such cases, the total purchase price will be refunded. The buyer cannot demand payment of interest on the purchase price or demand payment of any other expenses or losses.
- 15.3 A purchase cannot be cancelled and the buyer cannot demand a refund of the purchase price or raise any other claims against BRK if the description of the item is in compliance with paragraph 2. The same applies if evidence of forgery has required the use of scientific methods that were either not available at the time of sale, were excessively costly to use or led to the damage of the item in question.
- 15.4 Claims for a cancellation of a purchase must be notified to BRK when the buyer has discovered the fact that entitles the buyer to cancel the purchase. This notice, however, has to be given no later than two years after the final pick-up date according to paragraph 12.4. The item purchased must be returned to BRK in the same condition as it was on the day it was sold at auction. If these conditions are not met, the buyer loses the right to cancel the purchase and cannot claim a refund of the purchase price. The buyer is responsible for paying the costs associated with the return of the item.

16 OBJECTIONS & LIMITATIONS OF LIABILITY

- 16.1 BRK is aware that errors, technical difficulties and external abuse or disruptive influences may occur during the auction. Bidders cannot raise any claims against BRK as a result of such events.
- 16.2 The buyer is always responsible for the correct payment of VAT and other costs, fees etc. in accordance with Danish and foreign regulations.
- 16.3 Unless otherwise stated in these conditions of purchase, BRK may never be held liable for bidders'/buyers' operating loss, loss of profits, other indirect losses or consequential loss.

17 PRIVACY POLICY

- 17.1 It is important to BRK to ensure confidentiality and security regarding the bidder's/buyer's personal information. The privacy policy can be found on bruun-rasmussen.dk.

18 COMPLAINTS, DISPUTE RESOLUTION AND APPLICABLE LAW

- 18.1 BRK can always be contacted if the bidder/buyer has a complaint.
- 18.2 If the dispute cannot be resolved, the consumer can submit a complaint to the Complaint Resolution Centre, Nævnenes Hus, Toldboden 2, 8800 Viborg, Denmark, email: naevneshus.dk. Consumers residing in another EU country than Denmark can submit their complaint to the European Commission's Online Dispute Resolution platform via the website: <http://ec.europa.eu/odr>.
- 18.3 In Denmark, disputes must be brought before the City Court of Copenhagen, but see paragraphs 18.2. The mandatory rules on jurisdiction apply to consumer interests.

Bruun Rasmussen Auctioneers

The above is an English translation of the Danish version of the Conditions of Purchase. In case of a dispute, only the Danish version of the present Conditions of Purchase of Bruun Rasmussen is valid.

