

FINE ART + ANTIQUES

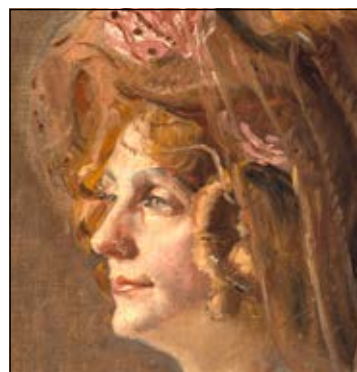


BRUUN RASMUSSEN

PART OF THE BONHAMS NETWORK

MALERIER + ANTIKVITETER

Traditionel Auktion 911



AUKTION

29. november - 1. december 2022

EFTERSYN

Torsdag	24. november	3 pm - 6 pm
Fredag	25. november	11 am - 5 pm
Lørdag	26. november	11 am - 4 pm
Søndag	27. november	11 am - 4 pm
Mandag	28. november	11 am - 5 pm

eller efter aftale



BRUUN RASMUSSEN
KUNSTAUKTIONER

Bredgade 33 · 1260 København K · Tlf. +45 8818 1111
info@bruun-rasmussen.dk · bruun-rasmussen.dk





AUKTIONSKALENDER

MALERIER OG ANTIKVITETER

Tirsdag	29. november		
	kl. 13	Asiatisk kunst	1 - 89
	kl. 16	Malerier og tegninger	90 - 199
Onsdag	30. november		
	kl. 14	Bøger fra Valdemars Slot	200 - 249
	kl. 15	Møbler, ure, sølv, bronzer, porcelæn og tæpper	250 - 387
Torsdag	1. december		
	kl. 16	Smykker og tasker	388 - 607

MODERNE KUNST OG DESIGN

Tirsdag	6. december		
	kl. 19	CoBrA	
Onsdag	7. december		
	kl. 16	Malerier og skulpturer Grafik	
	kl. 19	Armbåndsure	
Torsdag	8. december		
	kl. 16	Sølv og keramik Møbler, belysning og tæpper	

VIGTIG INFORMATION VEDR. BUDGIVNING!

Bonhams internationale kunder kan også byde med på Bruun Rasmussens aktuelle Traditionelle Auktion via Bonhams' hjemmeside: bonhams.com

SIDSTE FRIST FOR AFHENTNING: TIRSDAG DEN 20. DECEMBER

Genstande købt på denne auktion skal være betalt senest otte dage efter fakturadatoen og afhentet i Bredgade 33 senest tirsdag den 20. december. I modsat fald bliver de transporteret til Bruun Rasmussens lager på Paul Bergsøes Vej 16 i Glostrup for købers regning og risiko, hvor de kan afhentes fra torsdag den 22. december. Transporten koster 150 kr. pr. genstand inkl. moms, og opbevaringen koster 150 kr. pr. genstand pr. påbegyndt uge inkl. moms.



FINE ART + ANTIQUES

Live Auction 911



AUCTION

29 November - 1 December 2022

PREVIEW

Thursday	24 November	3 pm - 6 pm
Friday	25 November	11 am - 5 pm
Saturday	26 November	11 am - 4 pm
Sunday	27 November	11 am - 4 pm
Monday	28 November	11 am - 5 pm

or by appointment



BRUUN RASMUSSEN
AUCTIONEERS

Bredgade 33 · DK-1260 Copenhagen K · Tel +45 8818 1111
info@bruun-rasmussen.dk · bruun-rasmussen.com





DAYS OF SALE

FINE ART AND ANTIQUES

Tuesday	29 November		
	1 pm	Asian art	1 - 89
	4 pm	Paintings and drawings	90 - 199
Wednesday	30 November		
	2 pm	Books from Valdemar's Castle	200 - 249
	3 pm	Furniture, clocks, silver, bronzes, porcelain and carpets	250 - 387
Thursday	1 December		
	4 pm	Jewellery and handbags	388 - 607

MODERN ART AND DESIGN

Tuesday	6 December		
	7 pm	CoBrA	
Wednesday	7 December		
	4 pm	Modern paintings and sculptures Prints	
	7 pm	Wristwatches	
Thursday	8 December		
	4 pm	Silver and ceramics Furniture, lamps and carpets	

IMPORTANT INFORMATION ABOUT BIDDING AT THE AUCTION

Bonhams international customers can also bid at Bruun Rasmussen's current Live Auction via Bonhams' website: bonhams.com

DEADLINE FOR CLAIMING ITEMS: TUESDAY 20 DECEMBER

Items bought at this auction must be paid no later than eight days from the date of the invoice and claimed at Bredgade 33 by Tuesday 20 December at the latest. Otherwise, they will be moved to Bruun Rasmussen's storage facility at Paul Bergsøes Vej 16 in Glostrup at the buyer's expense and risk. Here they can be picked up from Thursday 22 December. This transportation will cost DKK 150 per item VAT included, and storage will cost DKK 150 per item per week VAT included.

En dansk symbolist, en kvindelig barokkunstner og rokokomøbler fra Bidstrup Gods

Bruun Rasmussen har nu været en del af Bonhams i mere end et halvt år. Det betyder, at vi samarbejder tæt med kunsteksperter fra internationale auktionshuse, deler viden og erfaringer og markedsfører kunstgenstandene fra vores auktioner de steder i verden, hvor det giver bedst mening til fordel for vores kunder. Det har på alle måder været givende, og i auktionshuset ser vi frem til den fortsatte rejse sammen med Bonhams' globale netværk.

På årets sidste auktion i Bredgade indleder vi vanen tro med at se tilbage i tiden. Med kunstneren G.F. Clement og to af hans værker af museums kvalitet fra begyndelsen af 1890'erne får vi indblik i en dansk kunstner, der på flere planer foregreb modernismens strømninger. Clement var en del af kredsen omkring Paul Gauguin og tilsluttede sig de franske nabiers stiliserede og symbolske billedsprog, der var et radikalt opgør med den dominerende naturalisme på den europæiske kunstscene. Nabierne kredsede om den katolske tro og så sig selv som en slags moderne profeter, hvilket afspejler sig i deres mange religiøse motiver – således også i Clements udbudte åbenbaringsbillede "Den Hellige Frans Vision", der var kunstnerens debut på Charlottenborg og netop har været vist på Ordrupgaards udstilling "Gauguin og hans venner" (kat.nr. 106 og 118).

Vi har gennem de seneste år haft fokus på kvindelige kunstnere, fordi historien om kvindernes kår i en mandsdomineret kunstverden og den manglende optagelse i den gængse kunsthistorie er vigtig at fortælle. På auktionen præsenterer vi blandt andet et sjældent selvportræt af Bertha Wegmann, kvindeskildringer af Elisabeth Jerichau Baumann og flere hilsner fra Anna Anchers Skagen. Højdepunktet blandt kvinderne er imidlertid et nyopdaget værk af den italienske barokkunstner Elisabetta Sirani, der allerede som 17-årig levede et liv som professionel kunstner og åbnede en af Europas første kunstsoler for kvinder. Med sikker og ekspressiv hånd har hun i auktionens portræt skildret adelsdamen Ortensia Leoni Cordini (fx kat.nr. 122, 124 og 123).

Håndkolorerede fabeldyr, klædedragter i kobberstik og historiske bogbind med samtidige inskriptioner. Vi skyder nu salget af det store bibliotek fra Valdemars Slot i gang. Bøgerne blev primært samlet i 1700-tallet af Carl Juel – barnebarn af søhelten Niels Juel, der overtog det smukke slot på Tåsinge i 1678. En af de mest spektakulære bøger er "Theatrum Cometicum" fra 1666-68 af den polske astronom Stanislaw Lubienticum. Værket er illustreret med håndkolorerede kobberstik og indeholder detaljerede beretninger om kometer nævnt i Bibelen – tillige med en nyere komete, som forfatteren personligt havde observeret (kat.nr. 234). Salget af slottets bibliotek fortsætter i 2023.

Fra Bidstrup Gods i Østjylland kommer et interiør med prægtige danske rokokomøbler, der har været ejet af den driftige storkøbmand og godsejer Gerhard de Lichtenberg. Han købte godset i 1748, og møblerne har siden været en del af stedets indretning. Højdepunktet er et stort chatol af nøddetræ og forgyldt træ, der bærer det Lichtenbergske våbenskjold og bag sine døre gemmer på miniatureportrætter af ejeren og hans hustru. Chatollet blev lavet på bestilling af godsejeren, og undersøgelser fra Nationalmuseet i 1951 peger på, at det blev udført af tidens mest anerkendte københavnske snedkermester Mathias Ortmann. Hos Bruun Rasmussen har vi aldrig tidligere set et møbel af den kaliber, og det fremstår som noget af det bedst bevarede fra den danske rokoko. Vurderingen for chatollet lyder på 1,5-2 mio.kr., men det udbudte interiør består også af et sæt på fire ens rokokokommoder og fire store og fire mindre venetianske glasspejle (kat.nr. 280-284).

Vi bliver ved de prominente provenienser med en række kostbare smykker, der har været ejet af medlemmer af det danske kongehus. Det gælder først og fremmest Prinsesse Thyras safirdiadem, som



hun antageligvis fik til sin 18-års fødselsdag i 1898 af sine forældre, den senere Kong Frederik VIII og Dronning Lovisa af Danmark. Auktionens andre kongelige smykker tæller blandt andet Dronning Alexandrines art deco smaragd- og diamantarmbånd og Dronning Louises sørgemedaljoner med fx en hårløk fra den afdøde Storfyrst Nikolaj Alexandrovich af Rusland, der aldrig nåede at blive gift med hendes datter Prinsesse Dagmar (kat.nr. 445, 444 og 450).

Juletiden nærmer sig, og hvis den rette gave skal findes til at lægge under træet, er et bud i den helt eksklusive ende en ring med den fineste hvide smaragdslebne diamant på 5.58 ct. eller et par Belle Epoque-ørestikker med cushion-cut diamanter på 8.20 ct. Apropos julen – borddækningen til denne højtid er afgørende for mange, og til formålet kan vi byde på et stort Flora Danica-middagsservice på 38 dele, vinglas fra Nøstetangen i Norge og imponerende stager, lågkrus og andet sølv til bordet (fx kat.nr. 423, 407 og 322).


Jesper Bruun Rasmussen

A Danish Symbolist, a Female Baroque Artist and Rococo Furniture from the Bidstrup Estate

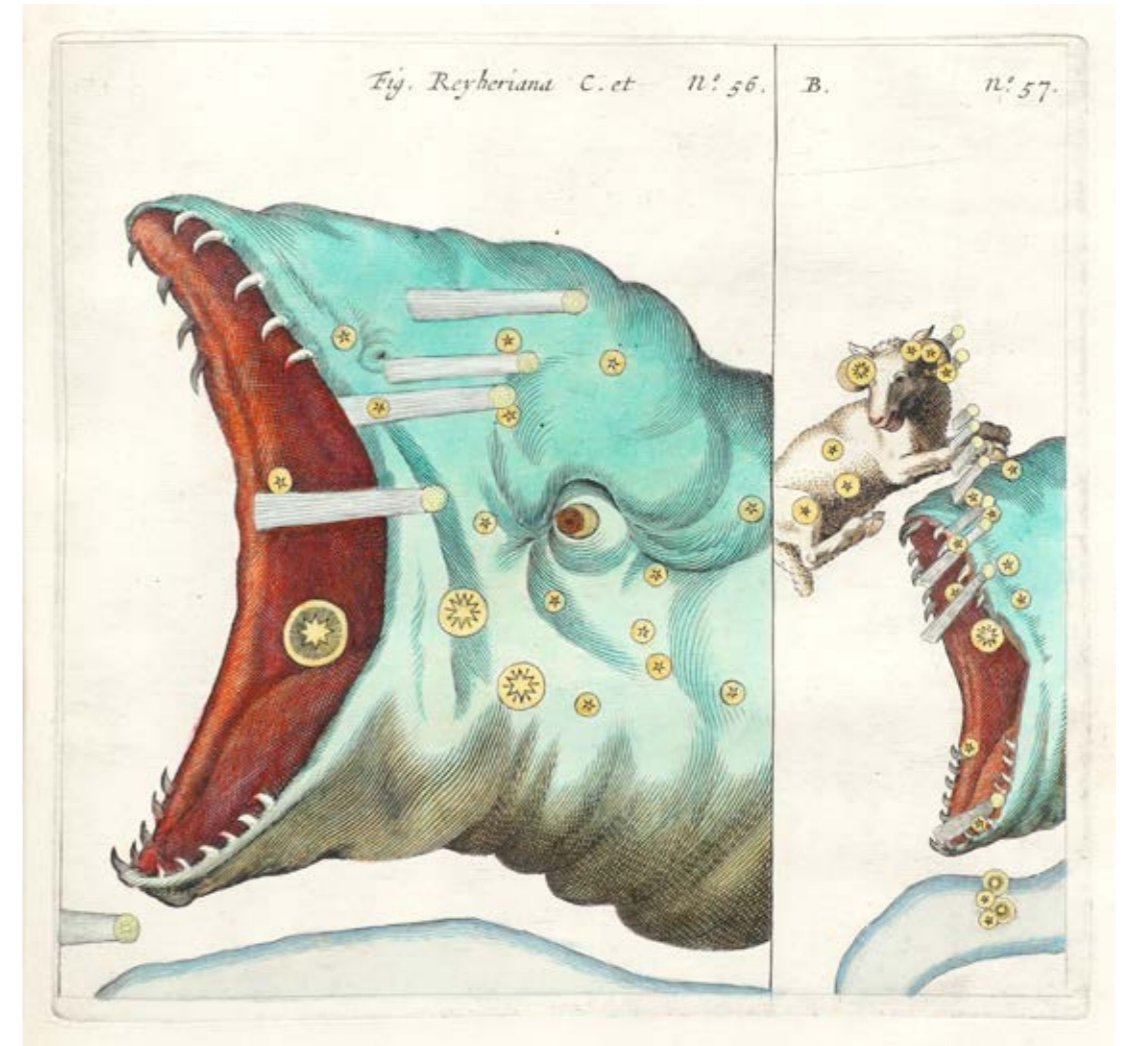
Bruun Rasmussen has now been part of Bonhams for more than six months. This means that we work closely with specialists from different international auction houses, share knowledge and experience and promote the art objects from our auctions in the places around the world where it makes the most sense for the benefit of our customers. It has been a rewarding period in every sense of the word, and at the auction house we look forward to continuing the journey together with Bonhams' global network.

At the final Live Auction of the year in Copenhagen, we begin by looking back in time. The artist Gad Frederik Clement and two of his museum-worthy works from the early 1890s provide us with an insight into the Danish artist who anticipated the trends of Modernism on several levels. Clement was part of the circle around Paul Gauguin and joined the stylized and symbolic idiom of the French "Les Nabis", which was a radical confrontation with the dominant Naturalism of the European art scene. The Nabis were oriented towards the Catholic faith and saw themselves as a kind of modern prophets, which is reflected in their many religious motifs – which can also be seen in Clement's offered revelation painting "Den Hellige Frans Vision" (The Vision of Saint Francis). The work was the artist's debut at Charlottenborg and has just been part of Ordrupgaard's exhibition "Gauguin and His Friends" (cat. no. 106 and 118).

In recent years, we have focused on female artists, because the story of women's plight in a male-dominated art world and the lack of inclusion in mainstream art history is important to tell. At the auction we present, among other works of art, a rare self-portrait by Bertha Wegmann, portraits of women by Elisabeth Jerichau Baumann and several greetings from Anna Ancher's Skagen. The highlight among the women, however, is a newly discovered work by the Italian Baroque artist Elisabetta Sirani, who already at the age of 17 lived life as a professional artist and opened one of Europe's first art schools for women. With a confident and expressive hand, she has depicted the noblewoman Ortensia Leoni Cordini in the portrait up for auction (e.g. cat. no. 122, 124 and 123).

Hand-coloured mythical creatures, costumes in copper engravings and historical book bindings with contemporary inscriptions. We are now launching the sale of the large library from Valdemar's Castle. The books were primarily collected during the 18th century by Carl Juel – grandson of the naval hero Niels Juel, who took over the beautiful castle on Tåsinge in 1678. One of the most spectacular books is the "Theatrum Cometicum" from 1666–68 by the Polish astronomer Stanislaw Lubienticum. The work is illustrated with hand-coloured copperplate engravings and contains detailed accounts of comets mentioned in the Bible – as well as a more recent comet that the author had personally observed (cat. no. 234). The sale of the castle's library continues in 2023.

From the Bidstrup Estate in East Jutland comes an interior with magnificent Danish Rococo furniture that was owned by the enterprising merchant and landowner Gerhard de Lichtenberg. He bought the estate in 1748, and the furniture has since been part of the interior of the place. The highlight is a large walnut and giltwood cabinet bureau, which bears the Lichtenberg coat of arms and behind its doors sit miniature portraits of the owner and his wife. The cabinet bureau was made to order by the landowner, and research conducted at the National Museum of Denmark in 1951 indicates that it was made by the most renowned Copenhagen cabinetmaker of the time, Mathias Ortmann. At Bruun Rasmussen, we have never seen a piece of furniture of this calibre before, and it appears to be some of the best preserved from the Danish Rococo. The estimate for the cabinet bureau is DKK 1.5-2 million, but the offered interior also consists of a set of four identical Rococo chests of drawers and four large and four smaller Venetian glass mirrors (cat. no. 280-284).



We stay with the prominent provenances with a number of precious pieces of jewellery that have been owned by members of the Danish royal house. This includes not least Princess Thyra's Sapphire Tiara, which she probably received on her 18th birthday in 1898 from her parents, the later King Frederik VIII and Queen Lovisa of Denmark. The auction's other royal jewellery includes Queen Alexandra's Art Deco emerald and diamond bracelet and Queen Louise's mourning medallions with, for example, a lock of hair from the late Grand Duke Nicholas Alexandrovich of Russia, who never got to marry the Queen's daughter Princess Dagmar (cat. no. 445, 444 and 450).

Christmas is fast approaching, and if you need to find the right gift to put under the tree, a suggestion at the very exclusive end of the scale might be a ring with the finest white emerald-cut diamond of 5.58 ct. or a pair of Belle Epoque ear pendants with cushion-cut diamonds of 8.20 ct. Speaking of Christmas – the table setting for this holiday is crucial for many, and for this purpose we can offer a large Flora Danica dinner set of 38 pieces, wine glasses from Nøstetangen in Norway and impressive candlesticks, tankards and other silverware for the table (e.g. cat. no. 423, 407 and 322)

Jesper Bruun Rasmussen
Jesper Bruun Rasmussen

SPECIALISTS IN FINE ART AND ANTIQUES



Paintings
Julie Arendse Voss
+45 8818 1123
jav@bruun-rasmussen.dk



Paintings
Birte Stokholm
+45 8818 1122
bst@bruun-rasmussen.dk



Paintings
Søren K. Holmstrup
+45 8818 1127
skh@bruun-rasmussen.dk



Paintings
Sofie Normann Christensen
+45 8818 1125
snc@bruun-rasmussen.dk



Books, Consultant
Lærke Bøgh
books@bruun-rasmussen.dk



Jewellery
Katrin Mikkelsen Sørensen
+45 8818 1174
kms@bruun-rasmussen.dk



Jewellery and handbags
Lise Jacobsen
+45 8818 1175
lij@bruun-rasmussen.dk



Royal jewellery
Martin Hans Borg
+45 8818 1128
mhb@bruun-rasmussen.dk



Director of valuations and sales
Kasper Nielsen
+45 8818 1121
kn@bruun-rasmussen.dk



Director and Auctioneer
Alexa Bruun Rasmussen
+45 8818 1091
alexa@bruun-rasmussen.dk



Shipping
Tina Bavnbek Jepsen
+45 8818 1056
tbj@bruun-rasmussen.dk



Asian and decorative arts
Ralph Lexner
+45 8818 1161
rl@bruun-rasmussen.dk



Silver and pocket watches
Heidi Schophuus Jensen
+45 8818 1163
hsj@bruun-rasmussen.dk



Antiquities and decorative arts
Alexandra Nilsson
+45 8818 1164
ani@bruun-rasmussen.dk



Decorative arts
Line Hjorth Langkjær
+45 8818 1166
lla@bruun-rasmussen.dk



Asian and decorative arts
Torben Friis Møller
+45 8818 1165
tfm@bruun-rasmussen.dk



Furniture, bronzes and clocks
Anders Fredsted
+45 8818 1142
afr@bruun-rasmussen.dk



Furniture and carpets
Henrik Schleppegrel
+45 8818 1145
hsc@bruun-rasmussen.dk



Representative France + Belgium
Ditte Herborg Krogh
+33 6 6185 4564
dhk@bruun-rasmussen.dk



Representative USA
Sandra Septimius
+1 718 764 7601
ss@bruun-rasmussen.dk

Åbningsforedrag & talk

Bredgade 33, København

Åbningsforedrag: Torsdag 24. november kl. 16.30

Museumsdirektør Jacob Thage fra Museum Jorn fortæller om CoBrA-bevægelsen som et internationalt kunstnerfællesskab.

Gallery Talk: Søndag 27. november kl. 12

Chefeksport Martin Hans Borg fra Bruun Rasmussen fortæller historien om Prinsesse Thyra af Danmarks safirdiadem og andre kongelige smykker fra auktionen.

Alle er velkomne!

Opening Presentation and Talk

Bredgade 33, Copenhagen

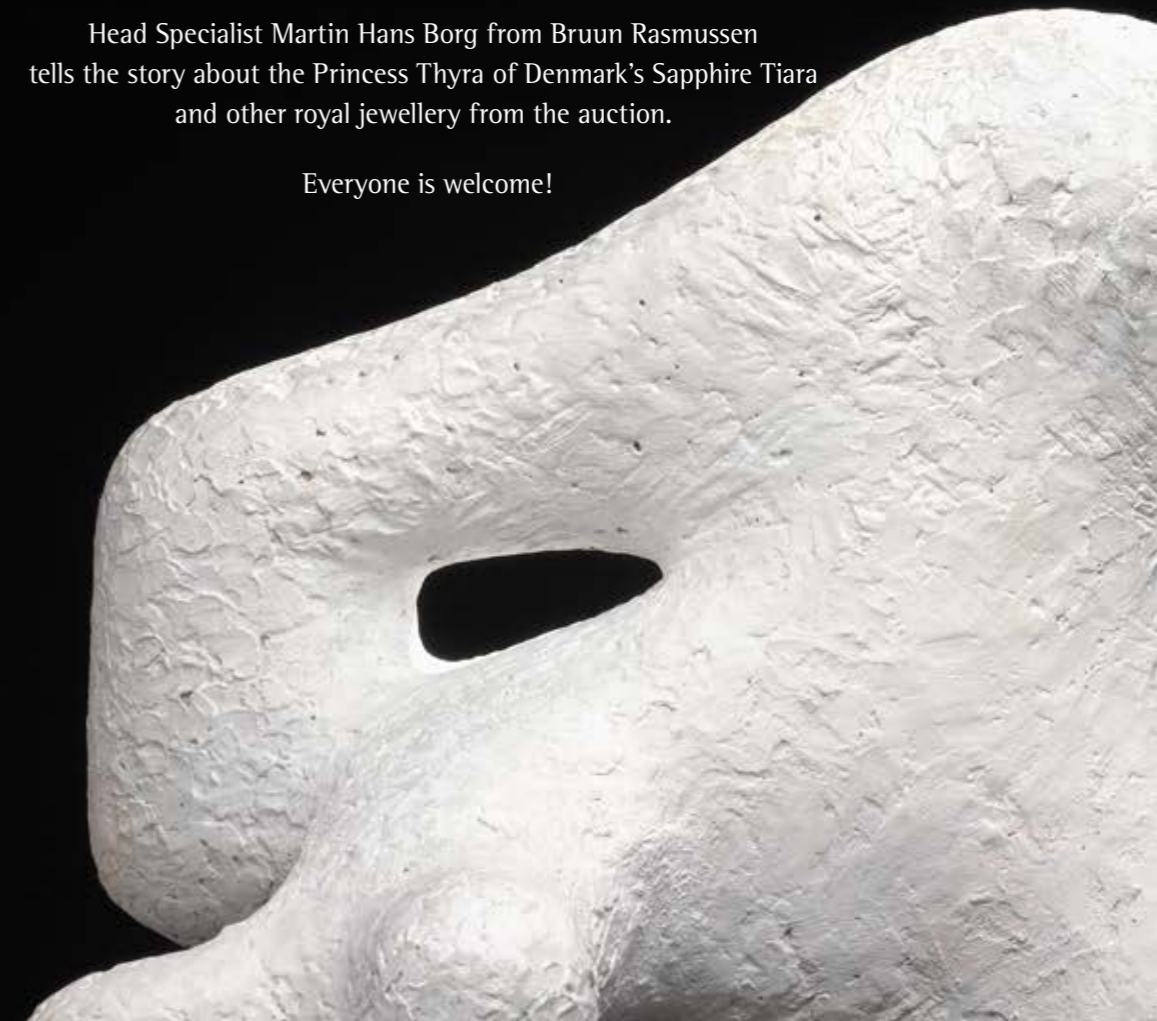
Opening Presentation: Thursday 24 November at 4.30 pm

Museum Director Jacob Thage from Museum Jorn gives a presentation on the CoBrA movement as an international fellowship of art.

Gallery Talk: Sunday 27 November at 12noon

Head Specialist Martin Hans Borg from Bruun Rasmussen tells the story about the Princess Thyra of Denmark's Sapphire Tiara and other royal jewellery from the auction.

Everyone is welcome!



JEWELLERY AND HANDBAGS

Thursday 1 December 4 pm

Lot 388 - 607





388
ROBERTO COIN
 A ruby necklace set with a square-cut ruby, mounted in 18k gold. L. app. 44 cm. Weight app. 74 g. Accompanied by original case.
 DKK 20,000–25,000 / € 2,700–3,350

389^{ARR}
ARJE GRIEGST
 Two pairs of cufflinks partly set with lapis lazuli, mounted in 18 and 14k gold and a tie pin set with a cabochon sapphire mounted in 18k gold. Signed Griegst. L. app. 5.5, 1.8 and 1.5 cm. Total weight app. 32.5 g. Circa 1980–90. (5)
 Accompanied by original receipt and jewellery bags.
 DKK 8,000–10,000 / € 1,100–1,350

390
ARJE GRIEGST
 A diamond ring "Small Heaven's Face" in the shape of a woman's face set with a brilliant-cut diamond weighing app. 0.04 ct., mounted in 18k gold. Colour: Top Wesselton (F-G). Clarity: VVS. Size 49. Circa 1970.
 DKK 10,000–15,000 / € 1,350–2,000

391
ARJE GRIEGST
 A gold bangle "Spiral" of 18k gold. Signed Griegst. Diam. app. 5.5 cm. Flexible. Weight app. 53.5 g. Circa 1970.
 Similar depicted and mentioned in Kerstin Wickman: "Arje Griegst. Guldsmid, designer og billedhugger // Goldsmith, Designer and Sculptor", Forlaget Vandkunsten, 2013, pp. 150–159.
 DKK 30,000–40,000 / € 4,050–5,400

392
ROBERTO COIN
 A ruby bracelet set with a square-cut ruby, mounted in 18k gold. L. app. 19.5 cm. Weight app. 38.5 g.
 DKK 12,000–15,000 / € 1,600–2,000



388



389



390



391



392



393
A. HALBERSTADT
 A nine-strand necklace of 18k gold. L. app. 45 cm.
 Weight app. 41.5 g.
 DKK 15,000–20,000 / € 2,000–2,700

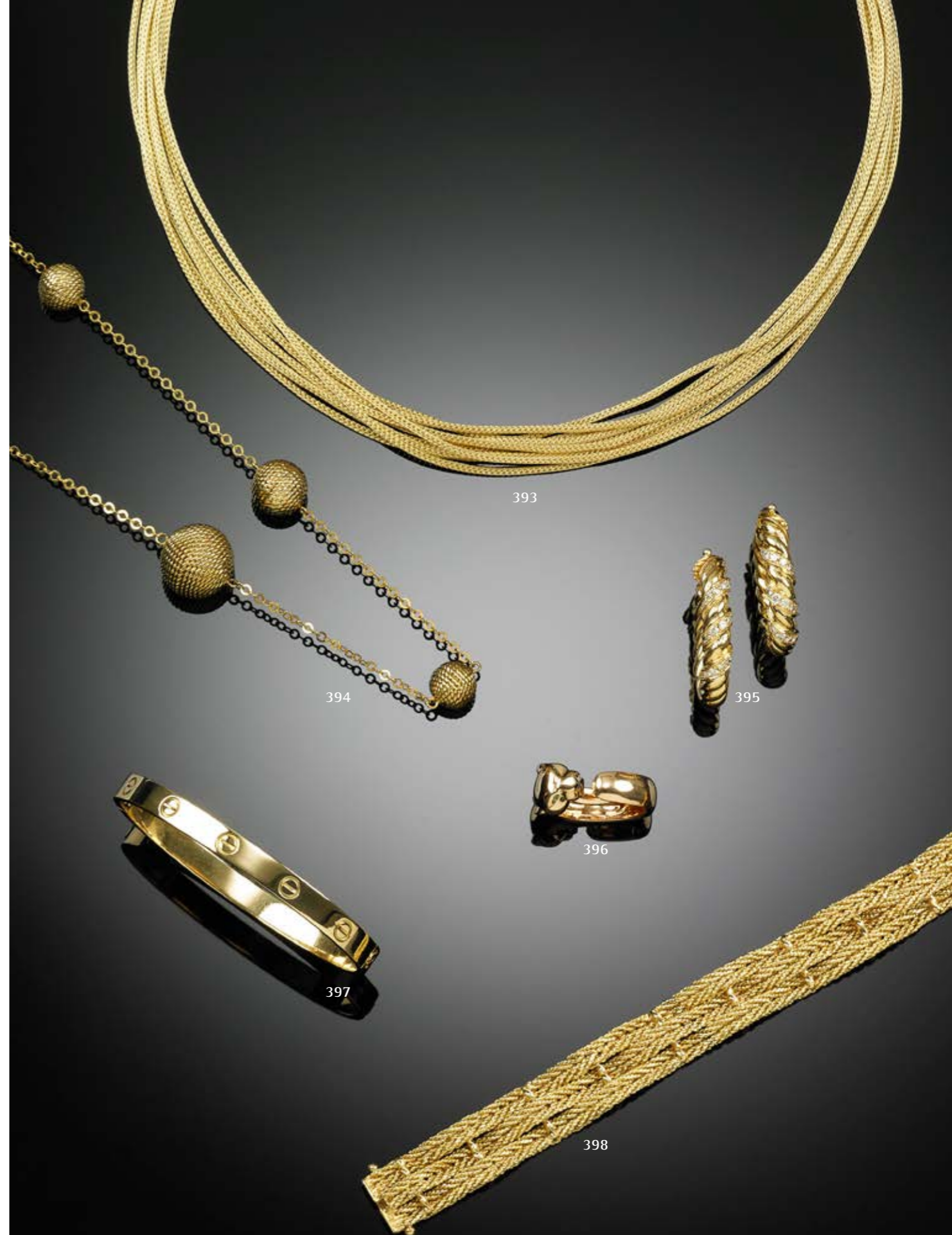
394
A. HALBERSTADT
 A necklace with beads of 18k gold. L. app. 82 cm.
 Weight app. 19.5 g.
 DKK 8,000–10,000 / € 1,100–1,350

395
 A pair of diamond ear clips "Creoles" each set with numerous brilliant-cut diamonds, mounted in 18k gold. Colour: Wesselton-Crystal (H-J). Clarity: VVS-SI. Diam. app. 3 cm. Weight app. 26 g. (2)
 DKK 10,000–15,000 / € 1,350–2,000

396
CARTIER
 A tsavorite and onyx ring "Panthère de Cartier" in the shape of a panther set with two pear-shaped tsavorite garnets and a cabochon onyx. Serial no. HBI 680. Size 58. Circa 2010.
 Accompanied by original case.
 Retail price app. DKK 79,000.
 DKK 10,000–15,000 / € 1,350–2,000

397
CARTIER
 A "Love" bangle of 18k gold. Diam. app. 6 cm. Size 18. Serial no. YJ8895. Weight app. 33,5 g.
 Accompanied by original case and screwdriver.
 DKK 30,000–40,000 / € 4,050–5,400

398
GEORG JENSEN & WENDEL
 A bracelet of 18k gold. L. app. 19 cm. Weight app. 65 g.
 DKK 15,000–20,000 / € 2,000–2,700





399

A. HALBERSTADT

A diamond necklace set with numerous brilliant-cut diamonds weighing a total of app. 6.52 ct., mounted in 18k white gold. Colour: Top Wesselton (F-G). Clarity: VVS. L. app. 40 cm. Weight app. 89 g. Accompanied by original receipt from Halberstadt, Copenhagen.

Retail price in 2000 DKK 150,000.

DKK 50,000–60,000 / € 6,700–8,050

400

A. HALBERSTADT

A pair of diamond ear pendants each set with a brilliant-cut diamond weighing app. 0.50 ct. and numerous brilliant-cut diamonds weighing a total of app. 6.02 ct., totalling app. 7.02 ct., mounted in 18k white gold. Colour: Top Wesselton (F-G). Clarity: VVS. L. app. 4.5 cm. Detachable pendants. 2001.(2) Accompanied by original receipt from Halberstadt, Copenhagen.

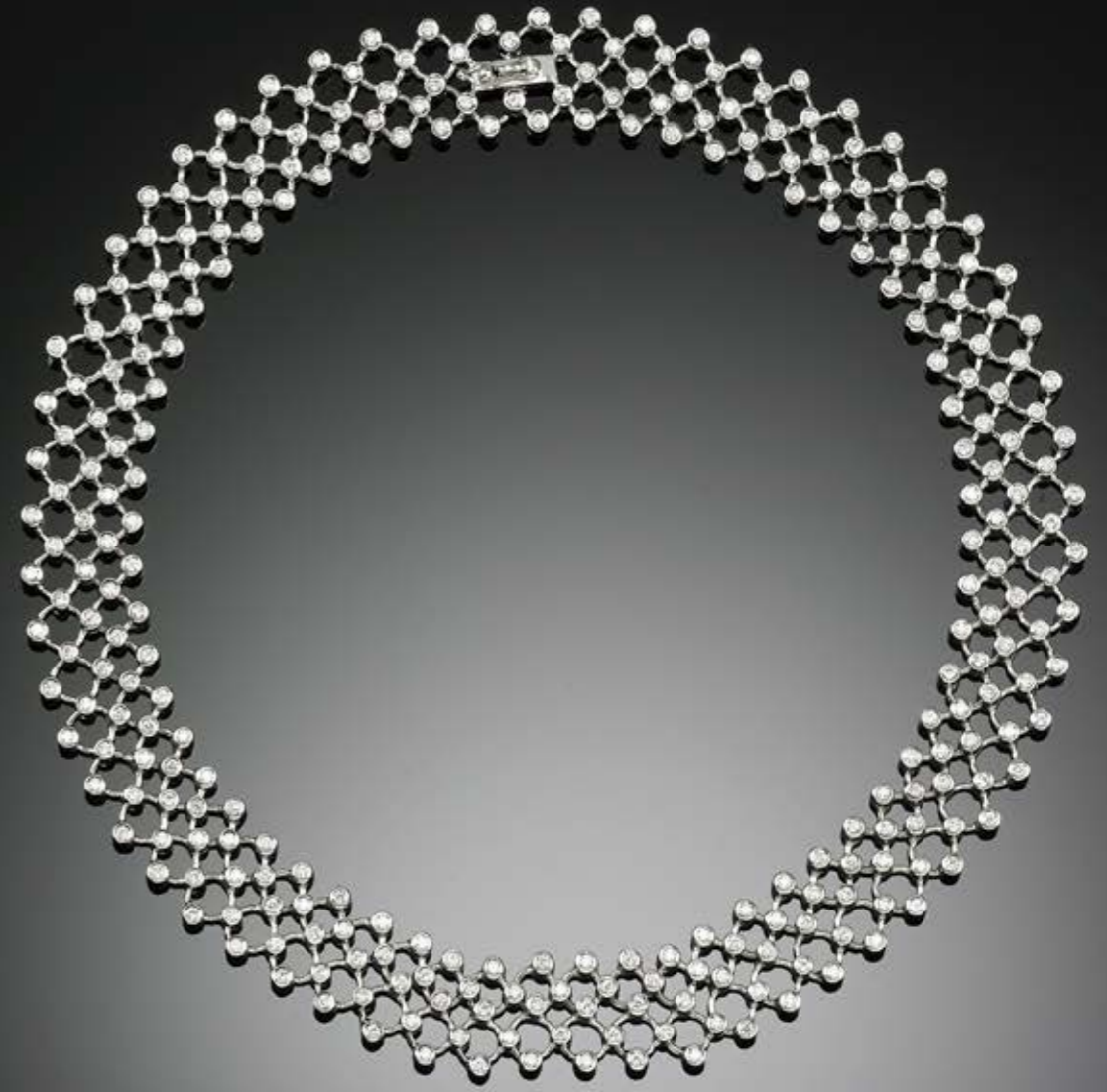
Retail price in 2001 DKK 150,000.

DKK 25,000–30,000 / € 3,350–4,050

401

A diamond ring set with a brilliant-cut diamond weighing app. 4.35 ct. encircled by numerous brilliant and marquise-cut diamonds, totalling app. 5.50 ct., mounted in platinum. Colour: Top Wesselton-Wesselton (G-H). Clarity: P1. Size 53. Circa 1950–60.

DKK 150,000–200,000 / € 20,000–27,000



399



400



401

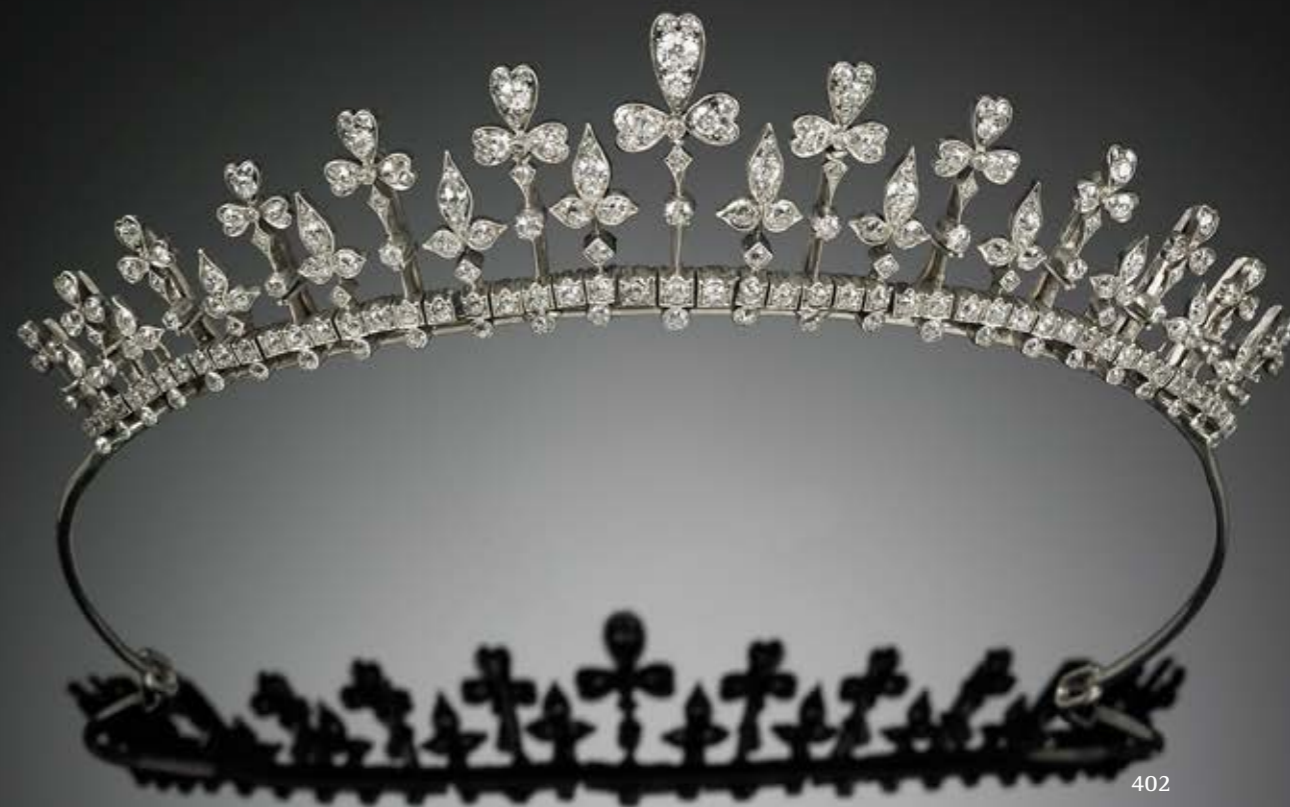


402

An important Belle Époque diamond tiara set with numerous old-cut diamonds weighing a total of app. 14.00 ct., mounted in gold and silver. Colour: Top Wesselton-Top Crystal (G-I). Clarity: VS-P1. Diam. app. 15 cm. Flexible. Circa 1900.

Provenance: Landowner and Lady in Waiting Ebba Louise Marie Busky-Neergaard. (1916-2008). She was the grandchild of The East Asiatic Company's founder H.N. Hansen and originally trained as a photographer. As a close friend of the royal family it was natural that she was asked to be lady-in-waiting to Crown Princess Ingrid in 1942. While she was at court she published two books with photographs of the three princesses, "Three Little Princesses" and "The Danish Princesses". She left court in 1954 to go to an agricultural school, and eventually became a tenant on the estate of Aakær, which was owned by her family.

DKK 80,000-100,000 / € 11,000-13,500



402



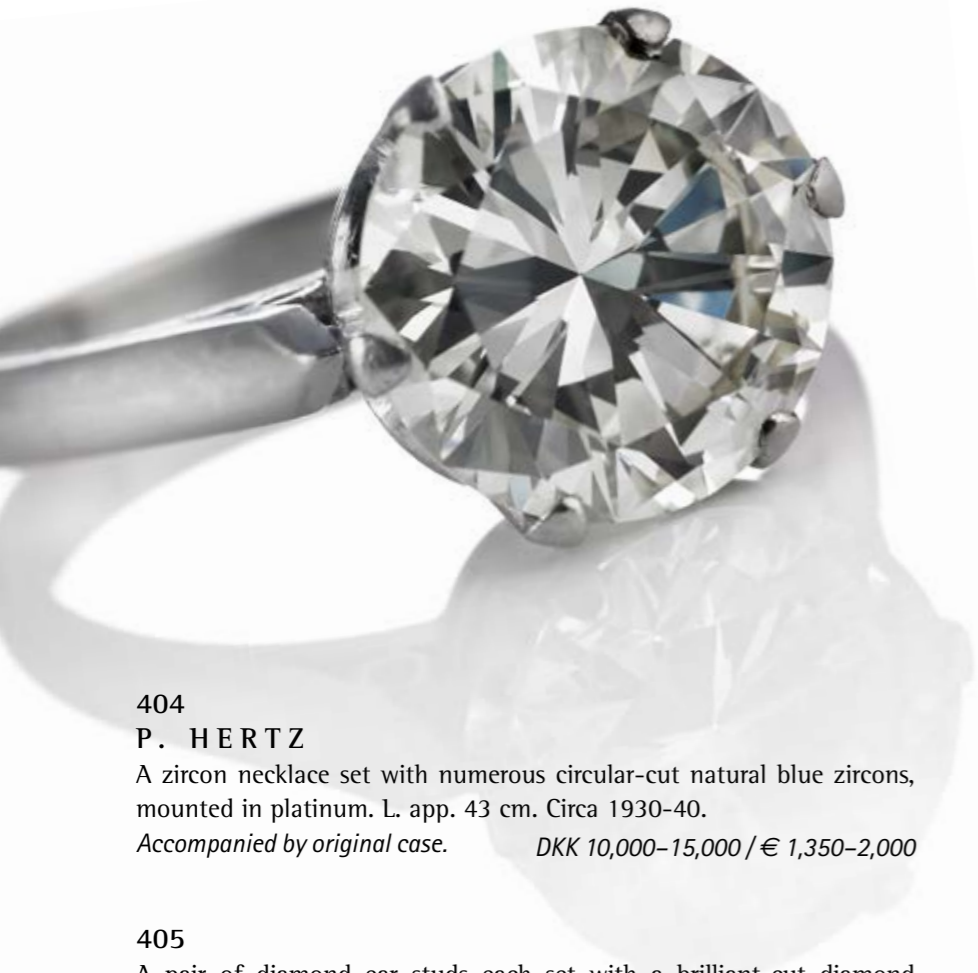
403

A diamond jewellery set comprising a brooch/clip and a pair of ear clips each set with numerous old-cut diamonds weighing a total of app. 21.00 ct., mounted in 18k gold and white gold. Colour: Wesselton-Crystal (H-J). Clarity: SI-P1. Diam. brooch app. 5.5 x 6.0 cm. and ear clips app. 4.5 x 4.0 cm. Total weight app. 56 g. France, circa 1940. (3)

Accompanied by original case.

DKK 150,000–200,000 / € 20,000–27,000





404

P. HERTZ

A zircon necklace set with numerous circular-cut natural blue zircons, mounted in platinum. L. app. 43 cm. Circa 1930-40.

Accompanied by original case. DKK 10,000-15,000 / € 1,350-2,000

405

A pair of diamond ear studs each set with a brilliant-cut diamond weighing a total of app. 2.02 ct., mounted in 18k white gold. Colour: Top Wesselton (F-G). Clarity: SI. Diamonds with laser inscriptions. (2)

Accompanied by GIA report nos. 12488015 and 2447271948. 2022.

Cut quality: Excellent.

Polish: Excellent and Very Good.

Symmetry: Very Good. DKK 90,000-100,000 / € 12,000-13,500

406

A diamond solitaire ring set with a brilliant-cut diamond weighing app. 4.00 ct., mounted in 18k white gold. Colour: Cape (M-N). Clarity: VVS1. Str. 52.5.

Accompanied by case. DKK 100,000-150,000 / € 13,500-20,000



404



405



406



407

A pair of Belle Époque diamond ear pendants each set with a cushion-cut diamond weighing a total of app. 8.20 ct. and old-cut diamonds weighing a total of app. 0.30 ct., totalling app. 8.50 ct., mounted in 18k gold and silver. Colour: Top Cape-Cape (L-M). Clarity: VS1-P1. L. app. 2 cm. Circa 1900. (2)

DKK 350,000–400,000 / € 47,000–54,000



407



408
V. HOLMSTRUP

Three pearl necklaces with cultured pearls and clasps set with numerous circular-cut sapphires, tsavorite garnets and brilliant-cut diamonds, mounted in 14k white gold. Colour: Top Wesselton-Wesselton (G-H). Clarity: VS. Pearl diam. app. 8.3 mm. L. app. 40, 42 and 48 cm. Can be used as one long necklace. (3)
Accompanied by extra pearls.

DKK 15,000–20,000 / € 2,000–2,700

409

Two diamond broches respectively in the shape of a ladybird set with circular-cut sapphires, blue enamel and brilliant-cut diamonds, mounted in 18k gold and white gold and a beetle set with brilliant-cut diamonds, mounted in 18k white. L. app. 1.8 and 1.6 cm. Total weight app. 8.5 g. (2)

DKK 8,000–10,000 / € 1,100–1,350

410

A pair of sapphire, emerald and diamond ear pendants each set with marquise-cut sapphires, emeralds and brilliant-cut diamonds, mounted in 18k white gold. Colour: Top Wesselton (F-G). Clarity: VVS-VS. L. app. 1.2 cm. (2)

DKK 8,000–10,000 / € 1,100–1,350

411
GEORG JENSEN & WENDEL

An emerald and diamond ring set with an emerald-cut emerald weighing app. 1.00 ct. encircled by numerous brilliant and single-cut diamonds weighing a total of app. 0.45 ct., mounted in platinum. Colour: Top Wesselton (F-G). Clarity: VS-P1. Size 51.5.

DKK 10,000–15,000 / € 1,350–2,000

412
OLE LYNGGAARD

An emerald and diamond ring set with a cabochon emerald and numerous brilliant-cut diamonds weighing a total of app. 0.29 ct., mounted in 18k white gold. Colour: Wesselton (H). Clarity: VS. Size 56.

DKK 8,000–10,000 / € 1,100–1,350

413

An emerald bracelet set with numerous circular-cut emeralds, mounted in 18k white gold. L. app. 18 cm. Weight app. 86 g. Sweden, 1971.

DKK 15,000–20,000 / € 2,000–2,700



408



409



410



411



412



413



**414
WIN**

An important emerald and diamond ring set with a natural Colombian emerald-cut emerald weighing app. 1.85 ct. encircled and flanked by numerous baguette and brilliant-cut diamonds weighing a total of app. 1.00 ct., mounted in platinum. Emerald clarity: Internally Flawless. Colour: River (D-E). Clarity: IF-VVS. Ref. no. 171016. Size 53. Accompanied by GIA Emerald Origin Report no. 1245666952 indicating; "Geographic origin: "Colombia" and Treatment: "None". 2017.

The emerald is a highly treasured and sought-after gemstone with its exotic, beautiful green colour. When chromium, vanadium, and iron are present in the mineral beryl, emeralds are formed, and the varying presence of these three elements result in the emeralds' green colours. Usually, emeralds have a lot of internal impurities and cracks that may cause deficiencies in their durability and beauty. Most of the emeralds on the gem market are treated with certain colourless or coloured oils and resin to enhance clarity and make imperfections less visible. Transparent and vividly saturated green emeralds that are untreated and natural are extremely rare, valuable and highly sought-after.

The first emeralds are said to come from Egypt. Today's known locations for the most sought-after and highly prized emeralds of exceptional quality are mainly in Colombia, but fine emeralds can also be found in Zambia, Russia, Brazil, Madagascar and Ethiopia.

DKK 80,000–100,000 / € 11,000–13,500

415

A pair of diamond ear studs each set with a brilliant-cut diamond weighing a total of app. 2.01 ct., mounted in 18k white gold. Colour: River (E). Clarity: VS1. (2)

Accompanied by IGI reports nos. F1R38466 and F1R39378. Antwerp, 2014.

DKK 100,000–125,000 / € 13,500–17,000

416

A diamond bracelet set with numerous brilliant-cut diamonds weighing a total of app. 11.11 ct., mounted in 18k white gold. Colour: River-Top Wesselton (E-F). Clarity: VVS-VS. L. app. 18.5 cm.

Cut quality: Triple excellent cut. Hearts & Arrows. Accompanied by HRD report no. J220000014543. 2022. *DKK 150,000–175,000 / € 20,000–23,500*





417

V. HOLMSTRUP

A necklace with a diamond pendant in the shape of a cross set with numerous brilliant-cut diamonds weighing a total of app. 2.00 ct., mounted in 14 and 18k white gold. Colour: Top Wesselton (F-G). Clarity: VVS-VS. L. pendant app. 3 cm. L. necklace app. 40 cm. Total weight app. 31.5 g.

Accompanied by original case.

DKK 10,000–15,000 / € 1,350–2,000

418

A diamond eternity ring set with numerous brilliant-cut diamonds weighing app. 2.85 ct., mounted in 14k white gold. Colour: Top Wesselton (F-G). Clarity: VVS. Size 55.

Accompanied by an insurance valuation by Ruben Svart of DKK 74,000.

DKK 10,000–15,000 / € 1,350–2,000

419

TIFFANY & CO.

A pair of diamond ear studs "Victoria" each set with marquise-cut diamonds weighing a total of app. 0.80 ct., mounted in platinum. Colour: Top Wesselton-Wesselton (G-H). Clarity: VS. (2)

Accompanied by original receipt and jewellery bag.

DKK 8,000–10,000 / € 1,100–1,350

420

A diamond eternity ring set with numerous brilliant-cut diamonds weighing a total of app. 6.60 ct., mounted in 18k white gold. Colour: Top Wesselton-Wesselton (G-H). Clarity: VS-SI. App. size 54. Weight app. 20 g.

DKK 20,000–30,000 / € 2,700–4,050

421

A diamond solitaire ring set with a brilliant-cut diamond weighing app. 2.00 ct., mounted in platinum. Colour: Cape-Light Yellow (N-O) Clarity: VS. Size 46.

DKK 40,000–50,000 / € 5,400–6,700

422

V. HOLMSTRUP

A diamond bracelet set with numerous brilliant-cut diamonds weighing a total of app. 5.40 ct., mounted in 18k white gold. Colour: Top Wesselton (F-G). Clarity: VVS-VS. L. app. 17.5 cm. Weight app. 96 g.

Accompanied by original case.

DKK 15,000–20,000 / € 2,000–2,700



418



420



421



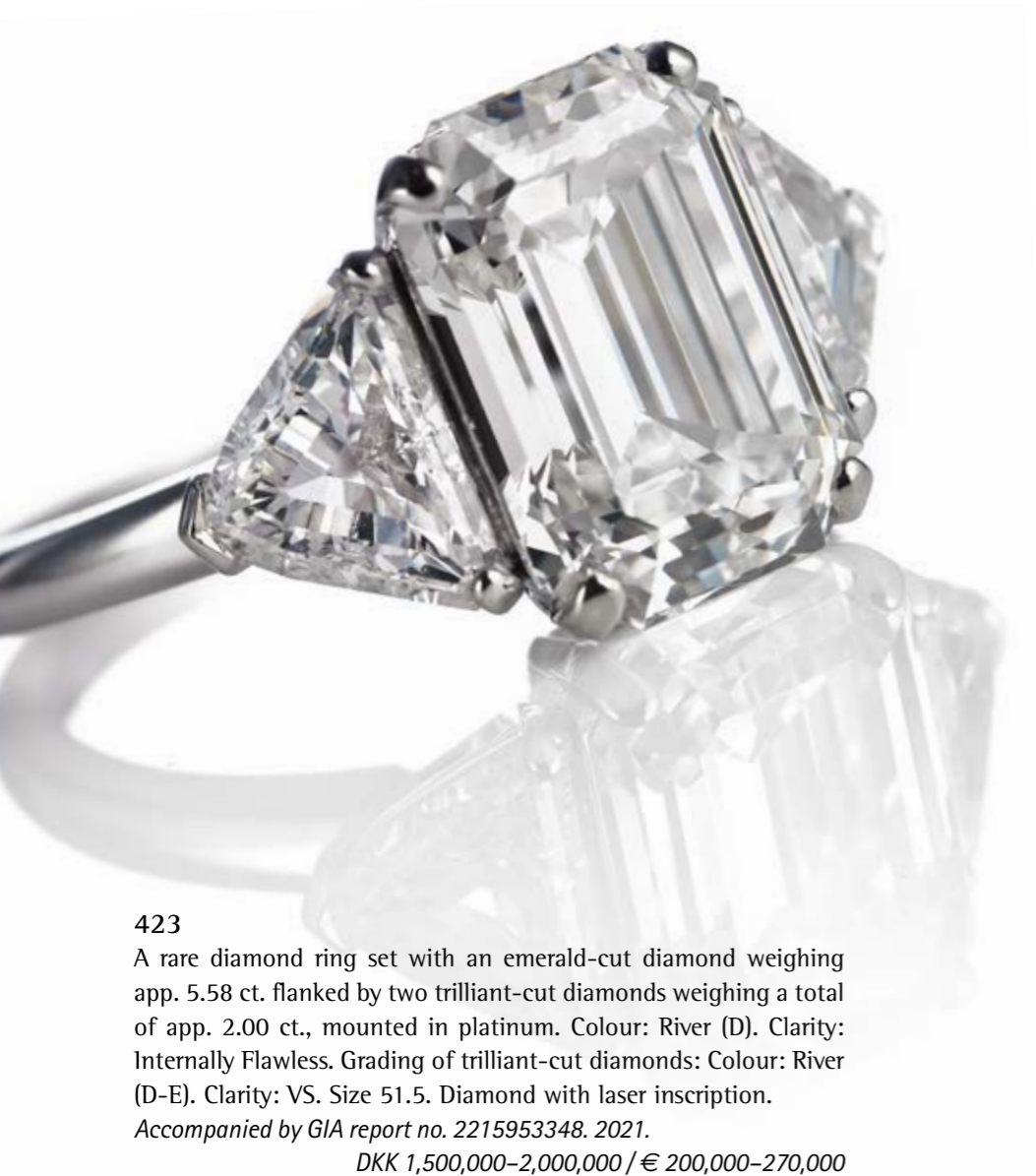
422



419



417



423

A rare diamond ring set with an emerald-cut diamond weighing app. 5.58 ct. flanked by two trilliant-cut diamonds weighing a total of app. 2.00 ct., mounted in platinum. Colour: River (D). Clarity: Internally Flawless. Grading of trilliant-cut diamonds: Colour: River (D-E). Clarity: VS. Size 51.5. Diamond with laser inscription.

Accompanied by GIA report no. 2215953348. 2021.

DKK 1,500,000–2,000,000 / € 200,000–270,000





424
OLE LYNGGAARD

A jewellery set comprising a necklace and a bracelet of 14k gold and sterling silver with clasps of 14k gold, one set with a brilliant-cut diamond. L. app. 39 and 19 cm. (2) *DKK 10,000–12,000 / € 1,350–1,600*

425
OLE LYNGGAARD

An amethyst, onyx and diamond ring set with a circular-cut amethyst, rose quartz, onyx, smoky quartz and numerous brilliant-cut diamonds, mounted in 18k gold. Colour: Top Wesselton (G). Clarity: VS. Size 56. Interchangeable beads. *Accompanied by original case and two extra beads of onyx and smoky quartz.*

DKK 8,000–10,000 / € 1,100–1,350

426
CARTIER

A ring “Juste un Clou” of 18k rose gold. Signed Cartier. Ref. no. DFA504. Size 55.

DKK 10,000–15,000 / € 1,350–2,000

427
HARTMANN'S

A diamond ring set with a brilliant-cut champagne coloured presumably Argyle diamond weighing app. 2.11 ct. encircled and flanked by numerous brilliant-cut diamonds weighing a total of app. 0.60 ct., mounted in 18k rose gold. Colour: Top Wesselton (F-G). Clarity: VVS-VS. Size 62. Diamond with laser inscription.

Accompanied by a copy of GIA report no. 7322269396. 2019.

Retail price app. DKK 120,000.

DKK 20,000–30,000 / € 2,700–4,050

428
HARTMANN'S

A diamond bracelet set with numerous brilliant-cut white diamonds weighing a total of app. 7.69 ct. and brilliant-cut champagne coloured presumably Argyle diamonds weighing a total of app. 7.65 ct., totalling app. 15.34 ct., mounted in 18k rose and white gold. Colour: Top Wesselton (F-G). Clarity: VVS-VS. L. app. 17.5 cm. Weight app. 33.5 g.

Retail price app. DKK 195,000.

DKK 20,000–30,000 / € 2,700–4,050





429

CHOPARD

A necklace with a diamond pendant "Happy Diamonds Happy Amore Heart" set with brilliant-cut diamonds weighing a total of app. 0.17 ct., mounted in 18k rose gold. Colour: River-Top Wesselton (E-F). Clarity: VS. Ref no. 6182059. Serial no. 797220-5001. L. app. 50 cm. Weight app. 23 g. Accompanied by original case.

DKK 8,000-10,000 / € 1,100-1,350

430

A diamond ring set with numerous brilliant-cut cognac coloured diamonds weighing a total of app. 4.00 ct., mounted in 18k pink gold. Clarity: VS-P1. App. size 54.5. Weight app. 10 g.

Accompanied by case from Bolou.

DKK 15,000-20,000 / € 2,000-2,700

431

CHOPARD

A diamond ring "Happy Diamonds" set with numerous brilliant-cut diamonds, mounted in 18k gold. Serial no. 6316513 822937-0001. Size 60.5.

DKK 10,000-15,000 / € 1,350-2,000

432

A. HALBERSTADT

A pair of diamond ear pendants each set with numerous brilliant-cut diamonds weighing a total of app. 1.10 ct., mounted in 18k gold. Colour: Top Wesselton (F-G). Clarity: VVS-VS. Diam. app. 1.4 cm.

(2) *DKK 8,000-10,000 / € 1,100-1,350*

433

A diamond bracelet set with numerous brilliant-cut diamonds weighing a total of app. 0.30 ct., mounted in 18k rose and white gold. Colour: Top Wesselton (F-G). Clarity: VVS-VS. Diam. app. 5.5 cm. Flexible. Weight app. 12.5 g.

DKK 8,000-10,000 / € 1,100-1,350

434

A diamond bracelet set with numerous brilliant-cut diamonds weighing a total of 0.50 ct., mounted in 18k gold. Colour: Top Wesselton-Top Crystal (H-I). Clarity: VS-SI. L. app. 25.5 cm. Adjustable. Weight app. 90 g. Circa 1950-60.

DKK 20,000-25,000 / € 2,700-3,350



430



429



431



432



433



434



435
A diamond necklace set with numerous natural pink, yellow and white pear-shaped, brilliant, marquise, emerald, trapeze and fancy-cut diamonds, mounted in 18k white gold. Clarity: VS1-P1. L. 41.5 cm.
DKK 30,000–40,000 / € 4,050–5,400

436
A pair of diamond ear studs each set with a brilliant-cut diamond weighing a total of app. 2.02 ct., mounted in 18k white gold. Colour: Top Wesselton (G). Clarity: VVS. Diamonds with laser inscriptions. (2) Accompanied by IGI reports nos. F1R38468 and F1R38464. Antwerp, 2014.
DKK 90,000–100,000 / € 12,000–13,500

437
An important fancy yellow diamond ring set with a cushion-cut natural fancy yellow diamond weighing app. 5.02 ct. flanked by fancy-cut white diamonds weighing a total of app. 0.81 ct., mounted in 18k white and yellow gold. Clarity yellow diamond: SI. Diamond with laser inscription. Size 54. Accompanied by GIA certificate no. 2364294642. 2020.
Colour distribution: Even.
DKK 350,000–400,000 / € 47,000–54,000





438

A Belle Époque diamond necklace set with numerous old-cut diamonds weighing a total of app. 3.00 ct., mounted in platinum. Colour: Wesselton-Top Crystal (H-I). Clarity: VS. L. app. 51 cm. Circa 1910. Accompanied by original receipt from Anne Bloom, New Bond Street, London.

DKK 10,000–15,000 / € 1,350–2,000

439

C. F. CARLMAN

A diamond brooch set with numerous brilliant and single-cut diamonds, mounted in 18k white gold. L. app. 4.5 x 3.0 cm. Circa 1950.

DKK 10,000–15,000 / € 1,350–2,000

440

A pair of diamond ear pendants each set with an old-cut diamond weighing a total of app. 1.46 ct., mounted in 18k white gold. Colour: Top Cape (K-L). Clarity: VVS. L. app. 1.8 cm. (2)

DKK 15,000–20,000 / € 2,000–2,700

441

A diamond solitaire ring set with a brilliant-cut diamond weighing app. 2.65 ct., mounted in 14k white gold. Colour: Crystal (J). Clarity: VVS. Size 53.

DKK 30,000–50,000 / € 4,050–6,700

442

A diamond ring set with a brilliant-cut diamond weighing app. 1.53 ct. flanked by trilliant-cut diamonds weighing a total of app. 0.24 ct., totalling app. 1.77 ct., mounted in 14k white gold. Colour: Top Wesselton-Wesselton (F-H). Clarity: VS2-SI1. Size 56.

Accompanied by a copy of AIG report no. J3110288730. 2021. DKK 15,000–20,000 / € 2,000–2,700

443

A diamond bracelet set with numerous brilliant-cut diamonds weighing a total of app. 4.46 ct., mounted in 18k white gold. Colour: Wesselton (H). Clarity: VS-SI. L. app. 16.5 cm. Zurich, 2007.

Accompanied by extra link of 1.8 cm., original case and receipt. DKK 20,000–30,000 / € 2,700–4,050



438



439



440



441



442



443



The newly wed Princess Alexandrine of Denmark. C. 1900



From the Private Collection of Queen Alexandrine of Denmark

444

Queen Alexandrine of Denmark's emerald and diamond bracelet.

A unique and rare Royal Art Deco emerald and diamond bracelet, links of beehive-shaped form with line framing, centered with five sugarloaf cabochon emeralds and four cushion-shaped old mine-cut diamonds, encircled by numerous rose- and old mine-cut diamonds, mounted in platin. Accompanied by an extra diamond link. Presumably France. 1920s. Supposedly retailed by A. Michelsen in Copenhagen, purveyor to the Danish Royal Court, accompanied by original fitted brown leather case, lined with cream silk and velvet, lid interior marked in a cartouche in gold print, below the Danish king's crown: Michelsen, Joaillier de la Cour, Copenhagen. L. 17.5 cm. W. 3 cm. L. extra link 2.5 cm. (3).

Queen Alexandrine of Denmark's emerald and diamond bracelet contains natural presumably Colombian emeralds weighing (from the clasp) app. 1.22 ct., app. 1.53 ct., app. 2.21 ct., app. 1.58 ct., and app. 1.00 ct., e.g. a total of app. 7.54 ct., and diamonds weighing a total of app. 26.10 ct. The extra diamond link weighing a total of app. 2.9 ct. Colour Top Wesselton-Crystal (G-J), Clarity VS-P1.

Mentioned and ill.: Bjarne Steen Jensen, "Juvelerne i det danske kongehus", Copenhagen 2002, p. 170.

DKK 300,000–400,000 / € 40,500–54,000





444



Queen Alexandrine of Denmark mostly preferred a simple style. Apparently, there does not immediately exist a photograph of her wearing the emerald and diamond bracelet. However, here she is photographed at her silver wedding with King Christian X in 1923. Among others she is wearing the tiara and corsage, which formerly belonged to her mother, Grand Duchess Anastasia Mikhailovna of Russia.

Queen Alexandrine of Denmark's emerald and diamond bracelet

The Art Deco emerald and diamond bracelet formerly belonged to Queen Alexandrine of Denmark (1879-1952), née Princess of Mecklenburg-Schwerin. In 1898 she married Prince Christian (X) of Denmark (1870-1947), the future king of Denmark from 1912. He was son of Crown Prince Frederik (VIII) and Crown Princess Lovisa of Denmark, the future King and Queen of Denmark from 1912. King Christian X and Queen Alexandrine's eldest son was Crown Prince Frederik, the future king Frederik IX of Denmark from 1947. Their younger son was Hereditary Prince Knud of Denmark (1900-1976), who in 1933 married

Hereditary Princess Caroline-Mathilde of Denmark (1912-1995). On Queen Alexandrine's death in 1952, the bracelet was inherited by her daughter-in-law, Hereditary Princess Caroline-Mathilde. On her death in 1995, the bracelet was inherited by their daughter, Princess Elisabeth of Denmark (1935-2018). Thence by descendants of King Frederik VIII and Queen Lovisa of Denmark until today. Dating the bracelet to the 1920s, it could have been a silver wedding present to Queen Alexandrine of Denmark in 1923 or a gift for her 50th birthday in 1929. See also genealogy on page 374.





The young Princess Thyra of Denmark around 1905.



From the Private Collection of Princess Thyra of Denmark

445

The Princess Thyra Sapphire Tiara.

A unique and rare Royal sapphire and diamond tiara, set with five cabochon natural sapphires, which can be exchanged with cabochon turquoises, as well as numerous old mine, rose and single-cut diamonds.

Designed with five upright, foliated and scrolling heart-shaped ornaments, decreasing size from the middle to each side, respectively set with cabochon natural sapphires at the center encircled by numerous rose-cut diamonds, the ornaments adorned with old mine, rose and single-cut diamonds, upper parts with stylized floral and buds including the centered three ornaments with pear-shaped old mine-cut diamonds, the two latter upper parts with two old mine-cut diamonds formed as a pear, lower parts with stylized floral, in between and to the back with

minor foliated flowers, set with rose-cut diamonds and presumably natural pearls, mounted in 14k gold, rose gold and silver on a curved circlet base. Enclosed five cabochon natural turquoises to be swapped with the sapphires. Apparently no maker's mark but presumably the jewellery manufacturing workshop E. Wolff & Co., London. Late 19th century. Later, supposedly in the 1920s, a brown velvet ribbon, set with several single-cut Rhinestones, was sewn on the base. Accompanied by an original fitted leather case from A. Michelsen in Copenhagen, purveyor to the Royal Danish Court, exterior with floral gold print, bottom with a hidden compartment, lined with red velvet and silk, lid interior marked in gold print below the Danish King's crown: Michelsen, Kgl. Hof & Ordensjuveleer, Kjöbenhavn. The interior also has a shelf indicating space for more jewellery than the tiara alone. H. ornaments from 4.6 to 5.5 cm. L. 40.2 cm. W. inside 24 cm. (9).





The Princess Thyra Sapphire Tiara contains natural sapphires from Ceylon weighing (from right to left, seen from the front) app. 1.31 ct., app. 1.90 ct., app. 8.90 ct., app. 1.77 ct., and app. 1.73 ct., e.g. a total of app. 15.61 ct., and diamonds weighing a total of app. 10 ct. Colour Top Wesselton-Crystal (G-J), Clarity VS-P1. Pearl diameter app. 2.53-2.62 mm.

Read more in the illustrated article on the following pages about the history of the Princess Thyra Sapphire Tiara, including e.g. the Royal owners, use and heritage.

Mentioned and ill.: Bjarne Steen Jensen, "Juvelerne i det danske kongehus", Copenhagen 2002, p. 122. DKK 600,000-800,000 / € 80,500-110,000



Glücksburg The Royal House of Denmark



Christian IX
1818-1906
King of Denmark from 1863
Married 1842 to
Princess Louise of Hesse-Cassel
1817-1898

Amongst eight children

Frederik VIII
1843-1912
King of Denmark from 1906
Married 1869 to
Princess Lovisa of Sweden
1851-1926

Amongst eight children

Christian X
1870-1947
King of Denmark from 1912
Married 1898 to Princess
Alexandrine of Mecklenburg-
Schwerin 1879-1952

Prince Harald of Denmark
1876-1949
Married 1909 to
Princess Helene of Glücksburg
1888-1962

Princess Thyra of Denmark
1880-1945

Frederik IX
1899-1972
King of Denmark from 1947
Married 1935 to
Princess Ingrid of Sweden
1910-2000

*Hereditary Prince
Knud of Denmark*
1900-1976
Married 1933 to
Hereditary Princess
Caroline-Mathilde

*Hereditary Princess
Caroline-Mathilde of Denmark*
1912-1995
Married 1933 to
Hereditary Prince
Knud of Denmark

Amongst three children

Margrethe II
b.1940
Queen of Denmark from 1972
Married 1967 to Henri
Count De Laborde De Monpezat
1934-2018

Princess Elisabeth of Denmark
1935-2018



*Princess Thyra of Denmark wearing
her sapphire tiara in the early 1930s.*

The Princess Thyra Sapphire Tiara

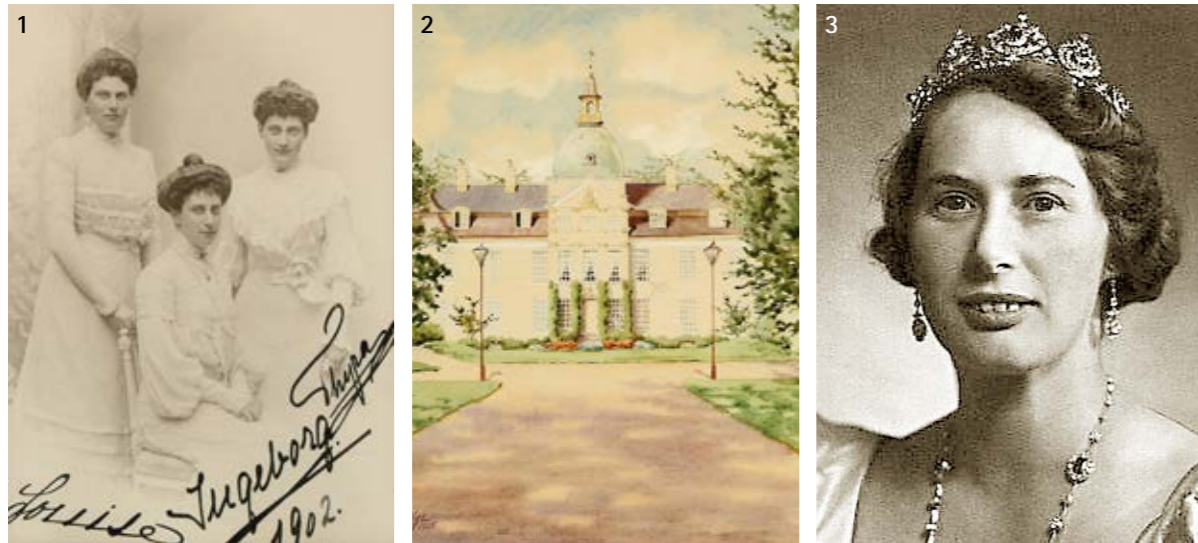
The sapphire tiara was given to Princess Thyra of Denmark (1880-1945) as a present from her parents, Crown Prince Frederik and Crown Princess Lovisa of Denmark, the future King Frederik VIII and Queen Lovisa of Denmark. Thence by Princess Thyra's testament to her niece, Hereditary Princess Caroline-Mathilde of Denmark, married to Hereditary Prince Knud of Denmark. On 3 February 1963, she gave the tiara to their daughter, Princess Elisabeth of Denmark (1935-2018). Thence by descendants of King Frederik VIII and Queen Lovisa of Denmark until today.

Princess Thyra and Her Family

Princess Thyra of Denmark was the sixth child of Crown Prince Frederik (VIII) and Crown Princess Lovisa's eight children. She was born on 14 March 1880 in Brockdorff's Palace at Amalienborg in Copenhagen, where her parents lived. At her baptism, she was given the full name Thyra Louise Caroline Amalia Augusta Elisabeth. As the daughter of the Crown Prince and Crown Princess, she was the grandchild of King Christian IX and Queen Louise of Denmark, "The In-laws of Europe", and named after her paternal aunt, Duchess Thyra of Cumberland. Princess Thyra thus had a central position in the Royal and Imperial houses of

the time. Two of her other paternal aunts were Queen Alexandra of Great Britain and Tsaritsa Maria Feodorovna of Russia, while a paternal uncle was King George I of Greece. She was also the youngest sister of nobility such as Prince Christian (X) of Denmark, Prince Carl of Denmark (King Haakon VII of Norway), Prince Harald of Denmark, and Princess Ingeborg of Denmark, who was married to Prince Carl of Sweden. Since Princess Thyra's mother herself was born a Princess of Sweden, one of Princess Thyra's mother's uncles was King Oscar II of Sweden and his son was her cousin, the later King Kong Gustav V of Sweden. Finally, Princess Thyra became cousins with among others King George V of Great Britain and Tsar Nicholas II of Russia.

Princess Thyra remained unmarried her whole life, and for many years she lived with her parents at the winter residence of Amalienborg and the summer residence of Charlottenlund Palace, North of Copenhagen. Her father died in 1912, and a few years after the death of her mother in 1926, she acquired in 1930 the property Amaliegade 22, close to Amalienborg. A large luxury flat at the fashionable address became her royal residence until her death on 2 November 1945.



1: Photograph from 1902 with Princess Thyra of Denmark (to the right) and her sisters, to the left Princess Louise and in the middle Princess Ingeborg. 2: Charlottenlund Palace, the summer residence of King Frederik VIII and Queen Lovisa. A watercolour from 1925 by Princess Thyra's cousin, Grand Duchess Olga Alexandrovna of Russia. 3: Hereditary Princess Caroline-Mathilde of Denmark with the Princess Thyra Sapphire Tiara. She is also wearing diamond earrings, which was a gift from her uncle, Prince Gustav of Denmark, and the Russian Sapphire Tiara as a sautoir.

The Childhood

Princess Thyra was given a stern upbringing. Crown Princess Lovisa had a reputation as an exacting mother. She demanded that her daughters only wore long dresses and not knee-length which were easier to move in. Sometimes they had to seek refuge with their father and under his desk, if the mother became too agitated. The children also had to learn to converse properly and with an impressive crowd. The Crown Princess Lovisa had the children talk to an empty chair, upon which was placed a calling card. This could for instance be "the English ambassador" or "The Bishop of Copenhagen". In the Danish Royal Theatre's royal box, the children also had to use their conversational skills on each other. Here the audience could watch the children's long conversations from afar. They would probably have been surprised to hear the content of these discussions. In order for the children not to be too quiet, they were taught to count to a hundred with four numbers each and then backwards again.

A Relationship

In 1901, when Princess Thyra was 21 years old, she had a love affair with King Christian IX's surgeon-in-ordinary, the twelve years older Niels C. Ilsoe.

This led to his immediate dismissal, and he moved to Western Jutland as a general practitioner (GP). It is said that Niels C. Ilsoe for the rest of his life had a photograph of Princess Thyra placed on his nightstand. That they both remained unmarried for the rest of their lives may indicate that this was not simply a flimsy romance. At the time, however, a marriage between a commoner and a princess was quite unthinkable and out of the question.

The Legacy

In 1906, Princess Thyra's parents became King and Queen of Denmark. However, this did not result in major changes in her personal life – apart from several trips around Denmark and abroad, where she kept King Frederik VIII and Queen Lovisa company. Princess Thyra's older brother was proclaimed King Christian X of Denmark in 1912. She also accompanied him and his wife, Queen Alexandrine, on several journeys, not least to Southern Jutland in 1920, where the King rode across the Danish-German border from 1864 and into the reclaimed part of Denmark. Here, a majority of the population had voted to return home to Denmark after the First World War had ended in German defeat.

Princess Thyra has received a somewhat unkindly



Prince Harald of Denmark's daughter, Princess Alexandrine-Louise of Denmark, was married to Count Luitpold Castell-Castell on 22 January 1937 in Christiansborg Palace Church. Princess Thyra participated in her niece's wedding wearing her sapphire tiara, and she sits second from the left in the front row. The name Thyra was very popular in Denmark in the second half of the 19th century due to a historical interest for the Viking Age. Thus, King Gorm the Old of Denmark, who lived in the 900s, was married to Queen Thyra.

epitaph in the official history books. For example, Bo Bramsen describes her *as a friendly yet timid and lonely princess [... and] she died in 1945 after 65 rather uneventful years*. This should probably be seen in the light of contemporary opinion, which also happened to align with Bo Bramsen's own. It was based on the fact that she did not play a particularly visible role in public life. But it was the Princess herself, who had chosen this withdrawn role.

If you talk to the many descendants of King Frederik VIII and Queen Lovisa of Denmark, the description is completely different. As one of them has described it: *Aunt Thyra has most often been unfairly and incorrectly portrayed, and the majority of the few people who have written anything about her have not known her at all. I remember her as hospitable and her large, stately home as a cheerful and popular meeting place for her siblings and the rest of the family. The younger generations were certainly also spoiled. She was so nice and always made sure we had what we needed. She was well-read, spoke several languages, had a cheerful sense of humour, could be straightforward, but at the same time had a natural royal dignity about her.* Hereditary Prince Knud of Denmark also describes Princess Thyra very positively in his memoirs. Among other qualities, he mentions her as a fine narrator of

the history of the Danish Royal family. These statements are corroborated by Bjarne Steen Jensen's description: *[She] gladly received the family, not least the nephews and nieces, who were comfortable in her home. She was the aunt of the whole family.*

The Sapphire Tiara

As mentioned Princess Thyra was given the tiara as a gift from her parents. This might have taken place on her 18th birthday in 1898, where she had her debut into society. The Princess Thyra Sapphire Tiara is designed in historicist style. With the upright ornaments it may bring back memories of medieval Royal crowns, and the historicist style was very popular around 1900. But where does the tiara come from? There is no clear answer, but a presumption.

The Jewellery Collection of Queen Lovisa

Already in connection with Princess Lovisa of Sweden's wedding with Crown Prince Frederik (VIII) of Denmark in 1869 there was a rumour about her large jewellery collection. It has been said that it could fill an entire billiard table. And this was only the beginning. Soon after and within the span of just a few years, she also inherited many pieces of jewellery from her parents, King Karl XV (1826-



3
 Sorgenfri. 3/2. 1963.
 Dette diadem tilhører
 Prinsesse Elisabeth.
 Diademet efter Tante Thyra, der
 som skifte til andre Søn.



1: Brockdorff's Palace at Amalienborg, where Princess Thyra was born. After King Frederik VIII's death in 1912, the heirs decided that henceforth the building should be known as Frederik VIII's Palace. Today, it is the Copenhagen residence of the Crown Prince Frederik and Crown Princess Mary of Denmark. 2: The house Amaliegade 22 in Copenhagen. 3: A note from Hereditary Princess Caroline-Mathilde of Denmark, where she gives the sapphire tiara to her daughter, Princess Elisabeth of Denmark. It is written in Danish and can be translated to: "Sorgenfri 3 February 1963. This tiara belongs to Princess Elisabeth. The tiara after Aunt Thyra, which can change to other gems". 4: Hereditary Princess Caroline-Mathilde of Denmark wearing Princess Thyra's tiara with turquoises. 5: Princess Elisabeth of Denmark wearing the Princess Thyra Sapphire Tiara. 6: The King Edward VII Ruby Tiara.

1872) and Queen Lovisa of Sweden (1828-1871), her grandmother, the Dowager Queen Josephina of Sweden (1807-1876) and her grandparents, Prince Frederick (1797-1881) and Princess Louise of the Netherlands (1808-1870).

It has been suggested that the Princess Thyra Sapphire Tiara could come from her mother's jewellery collection. There is, however, no solid proof that Queen Lovisa gave away many or larger pieces of jewellery while she lived. She probably did it at her daughter Princess Ingeborg's wedding in 1897, but it was as a wedding gift, and Princess Thyra remained unwed. At the same time Queen Lovisa's collection of jewellery – in particular the larger pieces – is fairly well covered in history books, and the Princess Thyra Sapphire Tiara cannot readily be found in any of the sections of the mother's familial inheritance lots. The age of the Princess Thyra Sapphire Tiara might also play a role since Queen Lovisa presumably did not inherit jewellery during the period, where the sapphire tiara was presumably produced. It must therefore be assumed that the Princess Thyra Sapphire Tiara was made especially for her at the behest of the parents. And perhaps the answer to the origin can be found in the Swedish royal house. Here, we find a so-called "cousin" to Princess Thyra's tiara, which could also be called "the red version of the Princess Thyra Sapphire Tiara".

Two Tiaras as "Cousins"

In the Swedish royal house, there is thus a tiara very similar to the Princess Thyra Sapphire Tiara. This tiara is called the King Edward VII Ruby Tiara and is set with rubies and diamonds. It was a wedding gift from King Edward VII and Queen Alexandra of Great Britain to their niece, Princess Margaret of Connaught (1882-1920), when she married Prince Gustaf Adolf of Sweden (the future King Gustav VI Adolf) in 1905. The King Edward VII Ruby Tiara was made by the jewellery manufacturing workshop E. Wolff & Co. in London and likely retailed by the jewellery company Garrard & Co., London. This tiara shares so many similarities with the Princess Thyra Sapphire Tiara, having the same structure in the form of tall heart-shaped ornaments and small flowers in between, that the two pieces of jewellery might very well have been made by the same designer. Likewise, the period of around 1900 fits both tiaras' origins, as Princess Thyra allegedly received her tiara in 1898, and Princess Margaret got hers as a newly made piece of jewellery in 1905. Both tiaras can also be altered in form and appearance.

The Princess Thyra Sapphire Tiara can be changed into a turquoise tiara, while the King Edward VII Ruby Tiara can be removed from its base and worn as a necklace. There are only small differences. The Princess Thyra Sapphire Tiara has five heart-shaped ornaments and smaller flowers between and at the back, mounted directly on a flat base. The King Edward VII Ruby Tiara instead has three heart-shaped ornaments, and the small flowers in between are placed on serpentine bands, and these then become part of a whole mounted on a flat base. The Princess Thyra Sapphire Tiara also has a slightly lower profile, so it has a different and greater balance than the King Edward VII Ruby Tiara.

Presumptions

Regardless of any remaining questions about the origins, the resemblance is so striking that it can be assumed that the Princess Thyra Sapphire Tiara was made at E. Wolff & Co., in London. Thus, Crown Prince Frederik (VIII) and Crown Princess Lovisa of Denmark may have acquired the sapphire tiara directly for their daughter, Princess Thyra, here or from a retailer. The retailer could have been Garrard & Co. in London. Because of the name in the box, it is presumably most likely that A. Michelsen in Copenhagen was the retailer. Here, King Frederik VIII and Queen Lovisa were also good and regular customers. When fashion in the 1920s and 1930s dictated that a tiara was worn low on the forehead, Princess Thyra had a velvet band with Rhinestones sewn on the base. In this way, the tiara became more comfortable and softer to wear when it was not placed in the hair. Moreover, the semicircular mounted shelf inside the box indicates that a bracelet originally belonged to the tiara as part of a jewellery set. Thus, a unique piece of jewellery with a special royal heritage and personal history is hereby described and concretized.

Martin Hans Borg

Literature:
 Arveprins Knud of Denmark: *Arveprins Knuds Erindringer*. Copenhagen 1954.
 Bramsen, Bo: *Huset Glücksborg*. Vol. 2, Copenhagen 1974.
 Jensen, Bjarne Sten: *Juvelerne i det danske kongehus*. Copenhagen 2002.
 Jespersen, Knud J. V.: *Rytterkongen. Et portræt af Christian 10*. Copenhagen 2007.
 Lerche, Anna og Mandal, Marcus: *En kongelig familie*. Copenhagen 2003.
 Lindgren, Malin: *Europas svigerbørn*. Copenhagen 1996.
 Munn, Geoffrey C.: *Tiaras. A History of Splendour*. Suffolk 2001.



446

1 A Royal 14k gold mourning medallion in memory of Landgravine Charlotte of Hesse-Cassel (1789-1864), née Princess of Denmark, worn by Queen Louise of Denmark (1817-1898), of oval openly form, front engraved with the date of her death "28 Marts" and back engraved with the year of her death "1864", the right interior ornament with a lock of her hair behind glass. Maker's mark MN. Denmark, early 1860s. H. incl. suspension loop 2.5 cm.

2 A Royal 14k gold mourning medallion in memory of Landgrave Wilhelm of Hesse-Cassel (1787-1867), worn by Queen Louise of Denmark (1817-1898), of oval openly form, front engraved with the date of his death "5 Septbr." and back engraved with the year of his death "1867", the right interior ornament with a lock of his hair behind glass. Maker's mark CF. Denmark, late 1860s. H. incl. suspension loop 2.3 cm.

3 A Royal 14k gold mourning medallion in memory of Prince Friedrich Paul Wilhelm of Nassau (1854-1855), worn by Queen Louise of Denmark (1817-1898), of oval openly form, front with an "F." in black enamel, back with a cross in black enamel, the left interior ornament with a lock of his hair, the right interior part engraved with the dates and years of his birth and death "23 Sep 1854 23 Oct. 1855". Apparently no maker's mark. Mid-1850s. H. incl. suspension loop 2.3 cm. (3).

Provenance: Queen Louise of Denmark (1817-1898), married 1842 to King Christian IX (1818-1906) of Denmark, ruler from 1863. The couple was called "The In-Laws of Europe" with many family members spread across this continent. Later H.R.H. Prince Henrik of Denmark (1934-2018), who gave them to the Danish jeweller John Rørvig. His heir sold them to Nyfortuna as the present owner.



(Enlarged)



In the middle, Queen Louise of Denmark. To the left and right her parents, Landgrave Wilhelm and Landgravine Charlotte of Hesse-Cassel. Early 1860s.

Landgravine Charlotte and Landgrave Wilhelm of Hesse-Cassel were the parents of Queen Louise of Denmark (1817-1898). The landgravine was daughter of Hereditary Prince Frederik and Princess Sofie Frederikke of Denmark, and thus a younger sister of King Christian VIII of Denmark. Landgravine Charlotte and Landgrave Wilhelm were married in Copenhagen 1810 and settled down in the Danish capital. First, they lived in a mansion at St. Annæ Square and later on they had their residence at Brockdorff's Palace, today Frederik VIII's Palace at Amalienborg. Queen Louise followed the tradition of wearing a mourning medallion for closer family members or even more distant relatives.

Thus, Prince Friedrich of Nassau was such a more distant relative to Queen Louise, when he was the grandchild of her sister, Princess Marie of Hesse-Cassel (1814-1895), married to Prince Frederick of Anhalt-Dessau (1799-1864). They had a daughter, Princess Adelaide-Marie of Anhalt-Dessau (1833-1916), who married Duke Adolphe of Nassau (1817-1905). In 1890 they became grand ducal couple of Luxembourg. Therefore, their eldest son became Grand Duke Wilhelm IV of Luxembourg (1852-1912). Their second eldest son was the Prince Friedrich of Nassau, who died as an infant. Thus, he was the younger brother of the great-grandfather of the present Grand Duke Henri of Luxembourg.

DKK 8,000-10,000 / € 1,100-1,350



447



447

An Imperial marcasite and silver pendant, of oval form, a seashells and elongated angles silver band, set with rose-cut marcasites, framing a vaulted and geometric pattern-carved rock crystal, adorned with a cabochon synthetic sapphire. Renaissance style, late 19th century. Original a brooch with later silver chain. H. 5 cm. L. chain 62 cm.

Provenance: Antique dealer and collector Arne Schlesch (1922-2010) in New York. According to his information the original brooch formerly belonged to Tsaritsa Maria Feodorovna of Russia (1847-1928), née Princess Dagmar of Denmark. Thence his relative's daughter, with residence in Denmark, until today.

DKK 8,000-10,000 / € 1,100-1,350



Frederik d.VII's moder, prinsesse Charlotte Frederikke, datter af storher-tug Friedrich Franz af Mecklenburg, gift med prins Christian Frederik (Christian d.VIII) ejede smykket. Da hun blev forvist fra hoffet på grund af sit forhold til søn-geren Daguy, var hun ofte i pengeforlegen-hen. Hun betalte da af og til med smykker. Hverværende smykke blev brugt som betaling til freken Reddelien, der havde udført bro-deriarbejde for prinsessen. Fra freken Reddelien gik smykket i arv til freken Amalie Bull (stamtavlen side 58), fra hvem det gik videre til min mor fru Louise Bull, fød Puggaard. Fra hende gik det videre i arv til min mor, fru Christel Helsted, fød Bull, der gav det til min kone Gudrun, fød Kopp. København, den 12. april 1960.
Benjamin Helsted.

To the left: Princess Charlotte Frederikke of Denmark left Horsens in 1829 and moved to Rome. This portrait is from after she left Denmark. To the right: The note of Benjamin Helsted, where he writes the provenance of the pendant.



449



449

A Royal Louis XVI garnet and 18k gold pendant, formed as a stylized bow with a faceted drop, all with looped bands and seashells, centring a flower set with rose-cut garnets. Apparently no maker's marks. C. 1800. H. incl. suspension ring 8.5 cm. Later silver-gilt chain enclosed. L. 74 cm. (2).

Provenance: Princess Charlotte Frederikke of Denmark (1784-1840), née Princess of Mecklenburg-Schwerin. She was married 1806-1810 to Prince Christian (VIII) of Denmark (1786-1848) and became mother of the later King Frederik VII of Denmark (1808-1863). When Prince Christian (VIII) discovered her relationship with her singing teacher, the composer Edouard du Puy, the couple was separated in 1809 and divorced in 1810. Princess Charlotte Frederikke was exiled to live at Horsens Mansion, where she had her residence 1810-1829. The father, Benjamin Helsted (b. Copenhagen 1911, d. s.p. 2001), of the present owner of the pendant, wrote the provenance in a document written in Danish, summarized as: "The Princess often lacked money, so she occasionally paid with jewellery. This present jewellery was used as a payment to Miss Reddelien, who had done embroidery work for the Princess in Horsens". From the seamstress, Miss Reddelien, the pendant went to her relative, Amalie Louise Bull, née Reddelien (1803-1859), married 1825 to Johan Bull (1803-1874). Thence to Benjamin Helsted's maternal grandmother, a relative of Amalie and Johan Bull, namely Louise Bull, née Puggaard (1854-1924), married 1880 to Gustav Ludvig Bull (1853-1927). Thence to Benjamin Helsted's mother, Christel Helsted, née Bull (1883-1964), married 1909 to Poul Helsted (1881-1945). Thence to Christel Helsted's daughter-in-law, Benjamin Helsted's wife, Gudrun Helsted, née Kopp (1924-2022). They were married in 1950. Thence to their daughter, with residence in Denmark, until today. The Bull family came originally from Trøndelag in Norway.

DKK 15,000-20,000 / € 2,000-2,700



448



448

An Imperial brooch, of star-shaped design, set with larger and minor fancy-cut Bornholm diamonds in short bands, mounted in 8k gold. Denmark, second half of the 19th century. W. 3.3 cm.

The so-called Bornholm diamonds are rock crystals carved out of the rocks on the island of Bornholm in the Baltic Sea.

Provenance: Antique dealer and collector Arne Schlesch (1922-2010) in New York. According to his information the original brooch formerly belonged to Tsaritsa Maria Feodorovna of Russia (1847-1928), née Princess Dagmar of Denmark. Thence his relatives' daughter, with residence in Denmark, until today.

DKK 4,000-6,000 / € 540-805



The elderly Tsaritsa Maria Feodorovna of Russia in 1903.



450

A Royal 18k gold mourning medallion for Grand Duke Nicholas Alexandrovich of Russia (1843-1865), worn by Queen Louise of Denmark (1817-1898), of oval openly form, left interior part scratched "Nixa 24 April 1865", right interior ornament with a lock of his hair behind glass. France, early 1860s. H. incl. suspension loop 3.5 cm.

Provenance: Queen Louise of Denmark (1817-1898), married 1842 to King Christian IX (1818-1906) of Denmark, ruler from 1863. The couple was called "The In-Laws of Europe" with many family members spread across this continent. Later H.R.H. Prince Henrik of Denmark (1934-2018), who gave it to the Danish jeweller John Rørvig. His heir sold it to Nyfortuna as the present owner.

King Christian IX and Queen Louise of Denmark's second daughter, Princess Dagmar (1847-1928) was engaged in 1864 to Grand Duke Nicholas Alexandrovich of Russia, called Nixa. The year after, in 1865, he was visiting Europe, but his constitution was getting bad and to get better he travelled to Southern France. However, the



(Enlarged)

Grand Duke grew gravely ill with cerebrospinal meningitis in Nice, and Princess Dagmar travelled as quickly as possible to visit him. He died in the presence of Dagmar on 24 April 1865 in the Imperial Russian Villa Bermond in Nice. It was said that shortly before his death, Grand Duke Nicholas blessed Princess Dagmar and his younger brother, Grand Duke Alexander (III) Alexandrovich of Russia, as a future married couple. Princess Dagmar and the Danish Royal family were inconsolable. Her mother, Queen Louise, followed the tradition of wearing a mourning medallion for Nixa with a lock of his hair. The medallion is also scratched with his name and date of death, presumably by Princess Dagmar. When the medallion is French, it is possible that it was bought, scratched and mounted with the hair in the Imperial villa in Nice, shortly after the death. Princess Dagmar was in mourning for a year, and on 17 June 1866 she was engaged to Nixa's brother, Grand Duke Alexander (III) of Russia. They were married on 9 November 1866 in St. Petersburg.

DKK 10,000-12,000 / € 1,350-1,600



(Enlarged)



450



Queen Louise of Denmark in the 1860s.



The newly engaged couple in Copenhagen 1864, Princess Dagmar and Grand Duke Nicholas Alexandrovich of Russia.



451

A diamond necklace set with numerous brilliant and single-cut diamonds weighing a total of app. 15.00 ct., mounted in 18k white gold. Colour: Top Wesselton-Top Crystal (F-I). Clarity: VS-P1. L. app. 41 cm. Weight app. 45 g.

DKK 90,000–100,000 / € 12,000–13,500

452

An emerald and diamond ring set with an emerald-cut Colombian emerald encircled by numerous trapeze and brilliant-cut diamonds weighing a total of app. 1.50 ct., mounted in platinum. Colour: Top Wesselton (F-G). Clarity: VS-P1. App. size 53. Circa 1950-60. *DKK 30,000–50,000 / € 4,050–6,700*

453

A diamond and platin pendant, curcular design with kokoshnik-motifs and geometric patterns, richly set with rose-cut and old-cut diamonds, surrounding an en-plein enamelled depiction of the Mother of God with the Child and two saints on a star-shaped guilloché 18k gold ground. Apparently no maker's mark. Russia, early 20th century. Diam. 5.2 cm. A later 18k white gold chain enclosed. L. 54 cm. (2).

DKK 10,000–15,000 / € 1,350–2,000



451



453



452



454

A diamond necklace set with a heart-shaped diamond weighing app. 1.70 ct., mounted in 18k white gold. Colour: Top Wesselton (G). Clarity: SI. L. app. 42 cm. Diamond with inscription.

Accompanied by IGI report no. 514272303. 2022.

Polish: Very good.

Symmetry: Very good.

Fluorescence: None.

DKK 60,000–80,000 / € 8,050–11,000

455

A pair of diamond ear pendants each set with numerous baguette and brilliant-cut diamonds weighing a total of app. 1.05 ct., mounted in 18k white gold. Colour: Wesselton-Top Crystal (H-I). Clarity: VS-P1. L. app. 2.6 cm. (2)

DKK 10,000–12,000 / € 1,350–1,600

456

CHOPARD

A pair of diamond ear pendants "Happy Diamonds" each in the shape of a heart set with numerous brilliant-cut diamonds weighing a total of app. 0.38 ct., mounted in 18k white gold. Colour: Top Wesselton (F-G). Clarity: VVS. Serial no. 83/2936-20 2650632. (2)

Accompanied by Chopard case.

DKK 8,000–10,000 / € 1,100–1,350

457

An emerald and diamond ring set with an emerald-cut emerald weighing app. 1.06 ct. encircled by numerous brilliant-cut diamonds weighing a total of app. 0.80 ct., mounted in 18k white gold. Colour: Top Wesselton-Wesselton (G-H). Clarity: VS-SI. Size 56.

DKK 25,000–30,000 / € 3,350–4,050

458

A diamond ring set with an emerald-cut diamond weighing app. 0.40 ct. encircled by brilliant-cut diamonds weighing a total of app. 0.43 ct., mounted in 18k white gold. Colour: Crystal-Top Cape (J-K). Clarity: SI-P1. Size 52.

DKK 12,000–15,000 / € 1,600–2,000

459

An emerald and diamond ring set with an emerald-cut Colombian emerald weighing app. 3.20 ct. flanked by two brilliant-cut diamonds weighing a total of app. 0.40 ct., mounted in 18k gold and white gold. Colour: Top Wesselton-Wesselton (G-H). Clarity: VS. Size 54.5.

Accompanied by GIL report no. JEN2019 11291409 indication; "Origin: Colombia". 2019.

DKK 15,000–20,000 / € 2,000–2,700

460

A diamond bracelet set with numerous brilliant-cut diamonds weighing a total of app. 7.50 ct., mounted in 18k white gold. Colour: Top Wesselton (F-G). Clarity: VVS-VS. L. app. 18.2 cm.

DKK 60,000–80,000 / € 8,050–11,000





461

A Belle Époque emerald and diamond ring set with an old-cut diamond weighing app. 2.83 ct. flanked by two emerald-cut Colombian emeralds weighing a total of app. 1.65 ct., mounted in platinum. Colour: Cape (M-N). Clarity: VS. Size 55. Circa 1900.

Accompanied by Gisgem report no. 18447 indicating: "Data and characteristics suggest Colombia". 2021.

DKK 150,000–175,000 / € 20,000–23,500

462

An Art Deco diamond brooch/clip set with an emerald-cut diamond weighing app. 0.50 ct. encircled by numerous old-cut diamonds weighing a total of app. 3.00 ct., totalling app. 3.50 ct., mounted in platinum and 18k white gold. Colour: Top Wesselton-Top Crystal (G-I). Clarity: VS-P1. L. app. 3.3 x 3.0 cm. Weight app. 16.5 g. Circa 1920-30.

DKK 30,000–40,000 / € 4,050–5,400

463

An Art Deco diamond bracelet set with numerous old-cut diamonds weighing a total of app. 2.50 ct. and single-cut diamonds weighing a total of app. 20.00 ct., totalling app. 22.50 ct., mounted in platinum. Colour: Top Wesselton-Top Crystal (G-I). Clarity: SI-P1. L. app. 19.0 cm. W. app. 4.4 cm. Weight app. 93 g. Circa 1920-30.

DKK 150,000–200,000 / € 20,000–27,000



461



462



463



464

A pearl and diamond jewellery set comprising a pearl necklace with cultured pearls and a clasp set with a Mabé pearl encircled by numerous brilliant-cut diamonds and a pearl and diamond ring set with a Mabé pearl encircled by brilliant-cut diamonds weighing a total of app. 0.50 ct., mounted in 18k white gold. Colour: Top Wesselton (F-G). Clarity: VVS-VS. Pearl diam. app. 8.0-9.0 mm. and 13.0-14.5 mm. L. app. 39 cm. Size 53. Sweden, 1986. (2)

DKK 10,000-15,000 / € 1,350-2,000

465

A pair of diamond ear studs each set with a brilliant-cut diamond weighing a total of app. 1.04 ct. encircled by numerous brilliant-cut diamonds weighing a total of app. 2.08 ct., totalling app. 3.12 ct., mounted in 18k white gold. Colour: Top Wesselton (F-G). Clarity: VVS-VS. Diam. app. 1.3 cm. (2)

DKK 30,000-40,000 / € 4,050-5,400

466

A pair of pearl and diamond ear pendants each set with a cultured Mabé pearl encircled by numerous brilliant-cut diamonds weighing a total of app. 3.80 ct., mounted in 18k white gold. Colour: Wesselton-Top Crystal (H-I). Clarity: SI-P1. Pearl diam. app. 15.4 mm. L. app. 2.2 cm. (2)

DKK 8,000-10,000 / € 1,100-1,350

467

A diamond bangle set with numerous single and brilliant-cut diamonds weighing a total of app. 1.65 ct., mounted in 18k white gold. Colour: Top Wesselton-Wesselton (G-H). Clarity: VS-SI. Diam. app. 5.8 cm. Weight app. 17.3 g.

DKK 8,000-10,000 / € 1,100-1,350

468

A diamond bracelet set with numerous brilliant-cut diamonds weighing a total of app. 1.90 ct., mounted in 18k white gold. Colour: Top Wesselton-Wesselton (G-H). Clarity: VS. L. app. 18.3 cm.

DKK 8,000-10,000 / € 1,100-1,350



464



465



466



467



468



469

A Belle Époque diamond necklace set with a pear-shaped diamond weighing app. 3.45 ct. and numerous old, single and baguette-cut diamonds weighing a total of app. 0.65 ct., mounted in platinum. Colour: Top Crystal-Crystal (I-J). Clarity: VS. L. app. 22 cm. Circa 1910.

Accompanied by case.

DKK 80,000–100,000 / € 11,000–13,500

470

A diamond ring set with numerous old-cut diamonds weighing a total of app. 1.35 ct., mounted in platinum and 14k white gold. Colour: Top Crystal-Crystal (I-J). Clarity: SI-P. App. size 56.5. Circa 1930-40.

Accompanied by case and original plaster mold.

DKK 10,000–15,000 / € 1,350–2,000

471

ALFRED THIELEMANN

A presentation enamel and sapphire brooch, of circular design, formed as a laurel-chased wreath with ribbons, centring the Russian Imperial mitre crown between two white opaque enamel squares, set with five cabochon sapphires and two rosecuts diamonds, mounted in 14k gold and rose gold. Workmaster Alfred Thielemann, scratched inventory no. 2001. Early 20th century. Diam. 2.6 cm. Accompanied by original fitted red leather case with the Imperial Warrant imprint in gold on the exterior lid. (2).

Alfred Thielemann was workmaster for Fabergé in St. Petersburg c. 1890-1910.

Provenance: The Danish owner's father-in-law, who was a military historian at Rosenborg Castle in Copenhagen. Here he met the Danish-born Tsaritsa Maria Feodorovna several times and the brooch was presumably a present from the Tsaritsa.

DKK 25,000–30,000 / € 3,350–4,050

472

A pearl and diamond ring set with a natural half pearl flanked by old-cut diamonds weighing a total of app. 0.50 ct., mounted in 18k gold and platinum. Colour: Crystal-Top Cape (J-K). Clarity: P1. Size 62. Accompanied by Gisgem reports nos. 8187 and 17376. 2020 and 2021. DKK 12,000–15,000 / € 1,600–2,000

473

A pearl and diamond brooch set with a presumably natural pearl encircled by numerous rose and old-cut diamonds weighing a total of app. 2.50 ct., mounted in silver and gold. Colour: Top Crystal-Top Cape (I-K). Clarity: SI-P1. L. app. 6.7–6.3 cm. Circa 1890-1900. DKK 12,000–15,000 / € 1,600–2,000

474

A Belle Époque pearl and diamond bracelet set with presumably natural pearls and old-cut diamonds weighing a total of app. 1.10 ct., mounted in 14k gold and platinum. Colour: Wesselton-Crystal (H-J). Clarity: VS-P1. Pearl diam. app. 7.4–9.7 mm. L. app. 18.5 cm. Circa 1900.

DKK 15,000–20,000 / € 2,000–2,700



469



470



471



472



473



474



475
MARLENE JUHL - JØRGENSEN
 A sapphire necklace set with a pear-shaped natural sapphire flanked by numerous faceted beads of sapphire, mounted in platinum. L. app. 49.5 cm.
 DKK 10,000-15,000 / € 1,350-2,000

476
BLACK, STARR & FROST
 A sapphire and diamond brooch set with a carved sapphire in the shape of a moon and numerous old-cut diamonds weighing a total of app. 0.80 ct., mounted in platinum, 18k gold and 8k white gold. Colour: Crystal-Top Cape (J-K). Clarity: VS-P1. Circa 1930-40.
 Accompanied by case.
 DKK 10,000-15,000 / € 1,350-2,000

477
GEORG JENSEN & WENDEL
 A star sapphire and diamond ring set with a natural cabochon star sapphire encircled by numerous marquise-cut diamonds weighing a total of app. 1.30 ct., mounted in 18k white gold. Colour: Top Crystal-Top Cape (I-K). Clarity: VVS-VS. App. Size 53. Circa 1950-70.
 Accompanied by original case.
 DKK 15,000-20,000 / € 2,000-2,700

478
AUGUST HOLLMING
 A diamond and moonstone brooch, horizontal form with two cabochon drop-shaped moonstones and centred with a forget-me-not, set with and surrounded by numerous rosecut diamonds, silver-topped and mounted in 14k gold. Workmaster August Hollming, St. Petersburg 1908-1917, 56 standard, scratched inventory no. 95607. Accompanied by original fitted holly wood Fabergé case. (2).
 Provenance: Danish private ownership.
 DKK 30,000-40,000 / € 4,050-5,400

479
 An Art Deco diamond brooch set with numerous old-cut diamonds weighing a total of app. 3.50 ct., mounted in platinum. Colour: Wesselton-Top Crystal (H-I). Clarity: VS. L. app. 7.3 cm. Circa 1920-30.
 DKK 20,000-25,000 / € 2,700-3,350

480
 A diamond bracelet set with numerous single-cut diamonds weighing a total of app. 2.50 ct., mounted in 18k white gold. Colour: Wesselton-Top Crystal (H-I). Clarity: SI-P1. L. app. 18.2 cm.
 DKK 10,000-15,000 / € 1,350-2,000





481

A diamond necklace with a pendant set with a brilliant-cut diamond weighing app. 1.15 ct. encircled by numerous brilliant-cut diamonds weighing a total of app. 0.16 ct., totalling app. 1.31 ct., mounted in 18k white gold. Colour: Top Cape (K). Clarity: P1. Diam. app. 9.5 mm. L. app. 42.5 cm.

DKK 15,000–20,000 / € 2,000–2,700

482

A pair of diamond ear studs each set with a brilliant-cut diamond weighing a total of app. 1.03 ct., mounted in 18k white gold. Colour: Top Wesselton (G). Clarity: FL. Diamonds with laser inscriptions. (2) Accompanied by HRD report nos. 220000076410 and 220000076416. 2022.

Cut quality: Very Good.

Polish: Excellent.

Symmetry: Excellent.

DKK 30,000–35,000 / € 4,050–4,700

483

A pair of diamond ear studs each set with a brilliant-cut diamond weighing a total of app. 2.00 ct., mounted in 18k white gold. Colour: Top Wesselton-Wesselton (G-H). Clarity: P1. (2)

DKK 35,000–40,000 / € 4,700–5,400

484

BODIL BINNER

A diamond eternity ring set with numerous brilliant-cut diamonds weighing a total of app. 7.96 ct., mounted in 18k white gold. Colour: River (D-E). Clarity: IF. App. size 52-55.

Cut quality: Triple excellent cut. Hearts & Arrows.

Accompanied by original case.

Retail price DKK 375,000.

DKK 100,000–150,000 / € 13,500–20,000

485

HARTMANN'S

A diamond solitaire ring set with a brilliant-cut diamond weighing app. 1.05 ct., mounted in 18k white gold. Colour: Wesselton (H). Clarity: SI1. App. size 54. Weight app. 21 g. 2013.

Accompanied by a copy of GIA certificate no. 1156551763 from 2013 and a copy of insurance valuation by Hartmann's of DKK 125,000.

Cut quality: Excellent cut.

DKK 20,000–25,000 / € 2,700–3,350

486

A diamond bracelet set with numerous brilliant-cut diamonds weighing a total of app. 2.02 ct., mounted in 18k white gold. Colour: River (D-E). Clarity: IF. L. app. 18 cm.

Cut quality: Triple excellent-cut. Hearts & Arrows.

DKK 20,000–30,000 / € 2,700–4,050



481



482



483



484



485



486



487

A diamond ring set with numerous fancy and brilliant-cut diamonds weighing a total of app. 2.70 ct., mounted in 18k white gold. Colour: River-Top Wesselton (D-F). Clarity: IF-VVS1. Size 53.5.

Accompanied by original jewellery bag and SGL (Svenska Gemmologiska Laboratoriet) report indicating, "Composition and cut quality of diamonds show an excellent result". 2021.

Cut quality: Excellent-cut.

DKK 60,000–80,000 / € 8,050–11,000

488

An important green diamond ring set with a modified cushion-cut natural fancy yellow-green diamond weighing app. 2.00 ct. encircled and flanked by numerous brilliant-cut natural pink and white diamonds weighing a total of app. 1.34 ct., mounted in 18k white gold. Grading of pink diamonds: Clarity: SI-P1. White diamonds: Colour: Top Wesselton-Wesselton (G-H). Clarity: VS. Size 52. Green diamond with laser inscription.

Accompanied by GIA diamond report no. 1179503309. 2017.

Colour distribution: Even.

DKK 300,000–350,000 / € 40,500–47,000

489

A diamond bracelet set with numerous brilliant and baguette-cut diamonds weighing a total of app. 10.00 ct., mounted in 18k white gold. Colour: Top Wesselton-Wesselton (G-H). Clarity: VS-SI. L. app. 18 cm. Weight app. 26 g.

DKK 70,000–80,000 / € 9,400–11,000





490

A diamond necklace set with an emerald-cut diamond weighing app. 1.00 ct., mounted in 18k white gold. Colour: River (E). Clarity: VVS1. L. app. 42 cm. Accompanied by GIA report no. 2168417305. 2013.
DKK 40,000–50,000 / € 5,400–6,700

491

A pair of diamond ear studs each set with an emerald-cut diamond weighing a total of app. 1.44 ct., mounted in 18k white gold. Colour: Crystal (J). Clarity: SI. (2) DKK 15,000–18,000 / € 2,000–2,400

492

A pair of diamond ear studs each set with a princess-cut diamond weighing a total of app. 2.28 ct., mounted in 18k white gold. Colour: River (E). Clarity: SI-P1. (2)
Accompanied by insurance valuation by Ruben Svart of DKK 153,000. 2022.
DKK 60,000–80,000 / € 8,050–11,000

493

A diamond ring set with an emerald-cut diamond weighing app. 1.85 ct. flanked by baguette-cut diamonds, mounted in 18k white gold. Colour: Wesselton-Top Crystal (H-I). Clarity: VVS1-SI. Size 55. Accompanied by case.
DKK 30,000–40,000 / € 4,050–5,400

494

A diamond eternity ring set with numerous brilliant-cut diamonds weighing a total of app. 5.05 ct., mounted in 18k white gold. Colour: Top Wesselton-Wesselton (G-H). Clarity: VS-SI. Size 54.
DKK 25,000–30,000 / € 3,350–4,050

495

A diamond bracelet set with numerous carré-cut diamonds weighing a total of app. 13.00 ct., mounted in platinum. Colour: Top Wesselton (F-G). Clarity: VVS. L. app. 19 cm. Weight app. 28.5 g.
DKK 100,000–125,000 / € 13,500–17,000



491



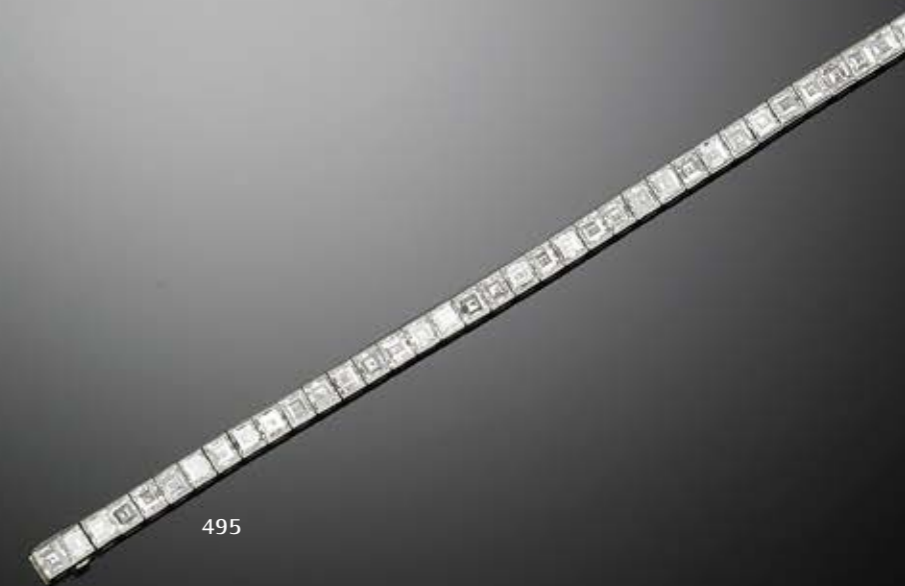
492



493



494



495



496
OLE LYNGGAARD
 An amethyst necklace set with numerous oval-cut amethysts, mounted in 14k white gold. Diam. app. 13 x 11 cm. DKK 10,000-15,000 / € 1,350-2,000

497
OLE LYNGGAARD
 A pearl and diamond ring set with cultured pearls and numerous old-cut diamonds weighing a total of app. 0.90 ct., mounted in 18k white gold. Colour: Top Wesselton-Top Crystal (G-I). Clarity: SI-P1. Pearl diam. app. 4.8-5.5 mm. Weight app. 15.5 g. App. size 53-54. Accompanied by a copy of a signed drawing by Ole Lynggaard. DKK 10,000-15,000 / € 1,350-2,000

498
 A diamond ring set with numerous brilliant-cut diamonds weighing a total of app. 0.95 ct., mounted in 18k white gold. Colour: Top Wesselton-Wesselton (G-H). Clarity: VS. Size 57. DKK 10,000-15,000 / € 1,350-2,000

499
 A diamond ring set with numerous princess and brilliant-cut diamonds weighing a total of app. 2.75 ct., mounted in 18k white gold. Colour: Top Wesselton (F-G). Clarity: VS-SI. Size 52.5. DKK 10,000-15,000 / € 1,350-2,000

500
OLE LYNGGAARD
 A pearl and diamond brooch set with numerous cultured pearls and brilliant-cut diamonds weighing a total of app. 0.50 ct., mounted in 18k white gold. Colour: Top Wesselton (F). Clarity: VS. Pearl diam. app. 3.7-6.6 mm. L. app. 6.0 x 5.5 cm. Weight app. 41 g. Accompanied by an original signed drawing by Ole Lynggaard and a pendant mounting. L. app 4.2 cm DKK 15,000-20,000 / € 2,000-2,700

501
 A diamond bracelet set with numerous brilliant-cut diamonds weighing a total of app. 1.58 ct., mounted in 18k white gold. Colour: Top Wesselton (F-G). Clarity: SI. L. app. 18.7 cm. Zürich, 2014. Accompanied by original receipt and extra link of 0.8 cm. DKK 15,000-20,000 / € 2,000-2,700





502

A Tahiti pearl and diamond necklace with cultured Tahiti pearls and a diamond clasp set with numerous brilliant-cut diamonds weighing a total of app. 0.99 ct., mounted in 18k white gold. Colour: Top Wesselton-Wesselton (G-H). Clarity: VS-SI. Pearl diam. app. 11.0-13.5 mm. L. app. 46.5 cm.

DKK 10,000-15,000 / € 1,350-2,000

503

A diamond eternity ring set with numerous brilliant-cut diamonds weighing a total of app. 3.10 ct., mounted in 18k white gold. Colour: River (D). Clarity: VVS. App. size 56.

Cut quality: Triple excellent-cut. Hearts & Arrows.

DKK 30,000-40,000 / € 4,050-5,400

504

A diamond eternity ring set with numerous brilliant-cut diamonds weighing a total of app. 5.00 ct., mounted in 18k white gold. Colour: Wesselton-Top Crystal (H-I). Clarity: VS-SI. Size 54.

DKK 40,000-50,000 / € 5,400-6,700

505

A diamond brooch in shape of a dog set with numerous brilliant-cut diamonds weighing a total of app. 2.50 ct., mounted in 18k white gold. Colour: Wesselton-Top Crystal (H-I). Clarity: VS-P1. L. app. 3.0 x 4.8 cm. Weight app. 13 g.

DKK 15,000-20,000 / € 2,000-2,700

506

A diamond ring set with numerous brilliant-cut diamonds weighing a total of app. 1.55 ct., mounted in 18k white gold. Colour: Top Wesselton (G). Clarity: VS. Size 56.5. Milan, 2008.

DKK 10,000-15,000 / € 1,350-2,000

507

A diamond bracelet set with numerous brilliant-cut diamonds weighing a total of app. 5.88 ct., mounted in 18k white gold. Colour: Top Wesselton (G). Clarity: IF. L. app. 18 cm.

Cut quality: Triple excellent-cut. Hearts & Arrows.

DKK 50,000-60,000 / € 6,700-8,050



502



503



504



505



506



507



508

An emerald and diamond ring set with an emerald-cut emerald weighing app. 1.20 ct. encircled by brilliant and single-cut diamonds weighing a total of app. 0.85 ct., mounted in 18k white gold. Colour: Top Wesselton (F-G). Clarity: SI-P1. Size 56.

DKK 10,000–15,000 / € 1,350–2,000

509

A topaz and diamond necklace with an emerald and diamond pendant set with faceted topaz beads, emerald beads weighing a total of app. 62.40 ct., carved onyx and brilliant-cut diamonds weighing a total of app. 0.63 ct., mounted in 18k white gold. L. necklace app. 91.0 cm. L. pendant app. 7.5 cm.

DKK 18,000–20,000 / € 2,400–2,700

510

A. DRAGSTED

An emerald and diamond ring set with a cabochon emerald weighing app. 5.00 ct. flanked by numerous brilliant-cut diamonds weighing a total of app. 0.30 ct., mounted in 14k white gold. Colour: Top Wesselton (G). Clarity: VVS-VS. App. size 54.

Accompanied by case and GIL report no. JEN20190513888. 2019.

DKK 10,000–15,000 / € 1,350–2,000

511

MIKHAIL PERCHIN

A diamond and emerald tie pin set with a cabochon emerald weighing app. 22.77 ct. in a bowl, decorated with pink translucent enamel on guilloché ground and rose-cut diamonds in a silver band, mounted on a 14k gold needle. Workmaster Mikhail Perchin, St. Petersburg town mark, 56 standard. Late 19th century. L. 9.5 cm. Accompanied by a newer case, marked Fabergé. (2).

Mikhail Perchin was workmaster at Fabergé, 1886–1903. DKK 40,000–50,000 / € 5,400–6,700

512

CHR. RASMUSSEN

An emerald and diamond ring set with a circular-cut Colombian emerald encircled by numerous brilliant-cut diamonds weighing a total of app. 0.70 ct., mounted in 14k white gold. Colour: Top Wesselton (F-G). Clarity: VVS-SI. Size 53.

Accompanied by GIL report no. 20190513884. 2019.

DKK 10,000–15,000 / € 1,350–2,000

513

An emerald, coral and pearl bracelet set with cabochon emeralds weighing a total of app. 15.00 ct., carved coral, brilliant-cut diamonds weighing a total of app. 2.40 ct. and cultured pearls, mounted in 18k white gold. Colour: Top Wesselton-Wesselton (G-H). Clarity: SI-P1. Pearl diam. app. 4.3 cm. L. app. 18.0 cm. DKK 50,000–60,000 / € 6,700–8,050



508



509



510



511



512



513



514

Two pearl necklaces each set with cultured pearls and a clasp set with numerous brilliant-cut diamonds weighing a total of app. 2.00 ct., mounted in 18k white gold. Colour: Top Wesselton-Wesselton (G-H). Clarity: VS-SI. Pearl diam. app. 9.0-9.5 mm. L. app. 42.5-45.5 cm. (2)

The pearl necklaces can be used as one long necklace.
DKK 15,000-20,000 / € 2,000-2,700

515

A pair of diamond ear clips each set with numerous brilliant-cut diamonds weighing a total of app. 2.36 ct., mounted in 18k white gold. Colour: Wesselton-Top Crystal (H-I). Clarity: VS-SI. L. app. 2.5 cm. Total weight app. 20.5 g. (2)

DKK 10,000-15,000 / € 1,350-2,000

516

A diamond ring set with three brilliant-cut diamonds weighing a total of app. 1.40 ct., mounted in 18k white gold. Colour: Wesselton-Top Crystal (H-I). Clarity: SI-P1. Size 55.

DKK 12,000-15,000 / € 1,600-2,000

517

A pair of turquoise and diamond ear pendants each set with cabochon turquoise a brilliant-cut diamonds weighing a total of app. 0.60 ct., mounted in 18k white gold. Colour: Top Wesselton-Wesselton (G-H). Clarity: VS-P1. L. app. 2.5 cm. (2)

DKK 12,000-15,000 / € 1,600-2,000

518

A coral and turquoise bracelet set with numerous cabochon turquoises and coral beads, mounted in 18k white gold. Pearl diam. app. 3.5 mm. W. app. 1.9 cm. L. app. 18.5 cm.

DKK 18,000-20,000 / € 2,400-2,700

519

A turquoise and diamond bracelet set with numerous cabochon turquoises and brilliant and single-cut diamonds weighing a total of app. 1.95 ct., mounted in 18k white gold. Colour: Top Wesselton-Wesselton (F-H). Clarity: VVS-VS. L. app. 18.0 cm. Circa 1950-60.

DKK 20,000-25,000 / € 2,700-3,350



514



515



516



517



518



519



520
OLE LYNGGAARD

A four strand necklace with an "Optimist" diamond clasp set with brilliant-cut diamonds weighing a total of 0.21 ct., mounted in 14k gold. Colour: Top Wesselton (G). Clarity: VS. L. app. 40 cm. (2)
Accompanied by original case.

DKK 10,000–15,000 / € 1,350–2,000

521
A diamond and emerald tie pin, circular top with a bending ribbon, set with rosecut diamonds and two oval-cut emeralds, mounted in 14k gold with needle. Indistinct maker's mark, Minsk town mark. Late 19th century. Later West European additional standard mark. L. 7.8 cm. Accompanied by original case and a later protector. (3).

DKK 8,000–10,000 / € 1,100–1,350

522
OLOV ANDREEVICH KOISTINEN
A diamond and ruby brooch, of rectangular double-framed form with stylized foliage, set with rosecut diamonds and fancy-cut rubies, mounted in 14k gold and rose gold. Olov Andreevich Koistinen, St. Petersburg town mark, 56 standard. Late 19th century. L. 5.6 cm. Accompanied by later Danish case. (2).

Provenance: The Danish merchant in Aalborg, Christian Fode (b. Genner at Aabenraa 1848, d. Aalborg 1918). He often traded with seafaring people on the harbour

quays, and here he acquired the brooch as a gift for his wife. Either Christian Fode got it for exchanging goods or bought it. Thence by descent, with residence in Denmark, until today.

DKK 12,000–15,000 / € 1,600–2,000

523
A diamond ring set with numerous brilliant-cut diamonds weighing a total of app. 5.20 ct., mounted in 18k gold. Colour: Wesselton (H). Clarity: VVS. Size app. 55.
Cut quality: Triple excellent-cut. Hearts & Arrows.

DKK 30,000–40,000 / € 4,050–5,400

524
BULGARI
A bangle of 18k rose gold. Diam. app. 6.5 cm. Weight app. 18.5 g. 2019.
Original æske samt Authenticity Card medfølger.

DKK 8,000–10,000 / € 1,100–1,350

525
A diamond bracelet set with numerous princess-cut diamonds weighing a total of app. 8.00 ct., mounted in 18k gold. Colour: Top Wesselton-Top Crystal (G-I). Clarity: VVS-VS. L. app. 17 cm.
DKK 60,000–80,000 / € 8,050–11,000





526

An emerald and diamond neck ring in the shape of a snake set with two marquise-cut emeralds and numerous brilliant-cut brown diamonds weighing a total of app. 4.00 ct. and white diamonds weighing a total of app. 1.90 ct., totalling app. 5.90 ct., mounted in partly black rhodinated 18k gold. Diam. app. 12 cm. Weight app. 67 g.

DKK 40,000–50,000 / € 5,400–6,700

527

A diamond ring set with numerous rose, single and brilliant-cut white and cognac coloured diamonds weighing a total of app. 2.80 ct., mounted in 18k white gold. Size 48.5.

DKK 10,000–15,000 / € 1,350–2,000

528

A diamond ring set with numerous brilliant-cut diamonds weighing a total of app. 0.70 ct., mounted in 18k gold and white gold. Size 52.

DKK 15,000–20,000 / € 2,000–2,700

529

A diamond solitaire ring set with a brilliant-cut diamond weighing app. 3.24 ct., mounted in 14k gold. Colour: Top Cape (L). Clarity: VS1. Size 58. Accompanied by valuation from Frits Pedersen A/S of DKK 370,000. 2014.

DKK 80,000–100,000 / € 11,000–13,500

530

A diamond ring set with numerous brilliant-cut diamonds weighing a total of app. 2.86 ct., mounted in 18k gold. Colour: Wesselton (H). Clarity: VVS. App. size 54.

Cut quality: Triple excellent-cut. Hearts & Arrows.

DKK 20,000–25,000 / € 2,700–3,350

531

VAN CLEEF & ARPELS

A pearl and onyx bracelet "Twist" set with numerous cultured pearls and onyx beads, mounted in 18k gold. Pearl diam. app. 4.0–5.0 mm. L. app. 20 cm. Ref. no. 101803. Signed. French stamps. Weight app. 58 g. 1962.

DKK 60,000–80,000 / € 8,050–11,000



526



527



528



529



530



531



532

A. HALBERSTADT

A jewellery set comprising a necklace and a bracelet of 18k gold. L. app. 42 and 18 cm. Total weight app. 39.5 g. (2)

Accompanied by original cases.

DKK 10,000–15,000 / € 1,350–2,000

533

OLE LYNNGAARD

A pearl necklace with cultured pearls with a diamond clasp in the shape of an elephant set with a brilliant-cut diamond weighing app. 0.05 ct. and a pair of diamond ear studs in the shape of elephants set with brilliant-cut diamonds weighing a total of app. 0.03 ct., mounted in 14k gold. Colour: Top Wesselton (F-G). Clarity: VS. Pearl diam. app. 7 mm. L. app. 44 cm. (4)

Accompanied by case.

DKK 10,000–15,000 / € 1,350–2,000

534

A diamond eternity ring set with numerous brilliant-cut diamonds weighing a total of app. 1.92 ct., mounted in 18k gold. Colour: Wesselton (H). Clarity: VVS. Size app. 54.

Cut quality: Triple excellent-cut. Ideal-cut.

DKK 15,000–20,000 / € 2,000–2,700

535

A pair of diamond ear pendants "Creoles" each set with numerous brilliant-cut diamonds weighing a total of app. 1.44 ct., mounted in 18k gold. Colour: River (D). Clarity: VVS. L. app. 2.1 cm. (2)

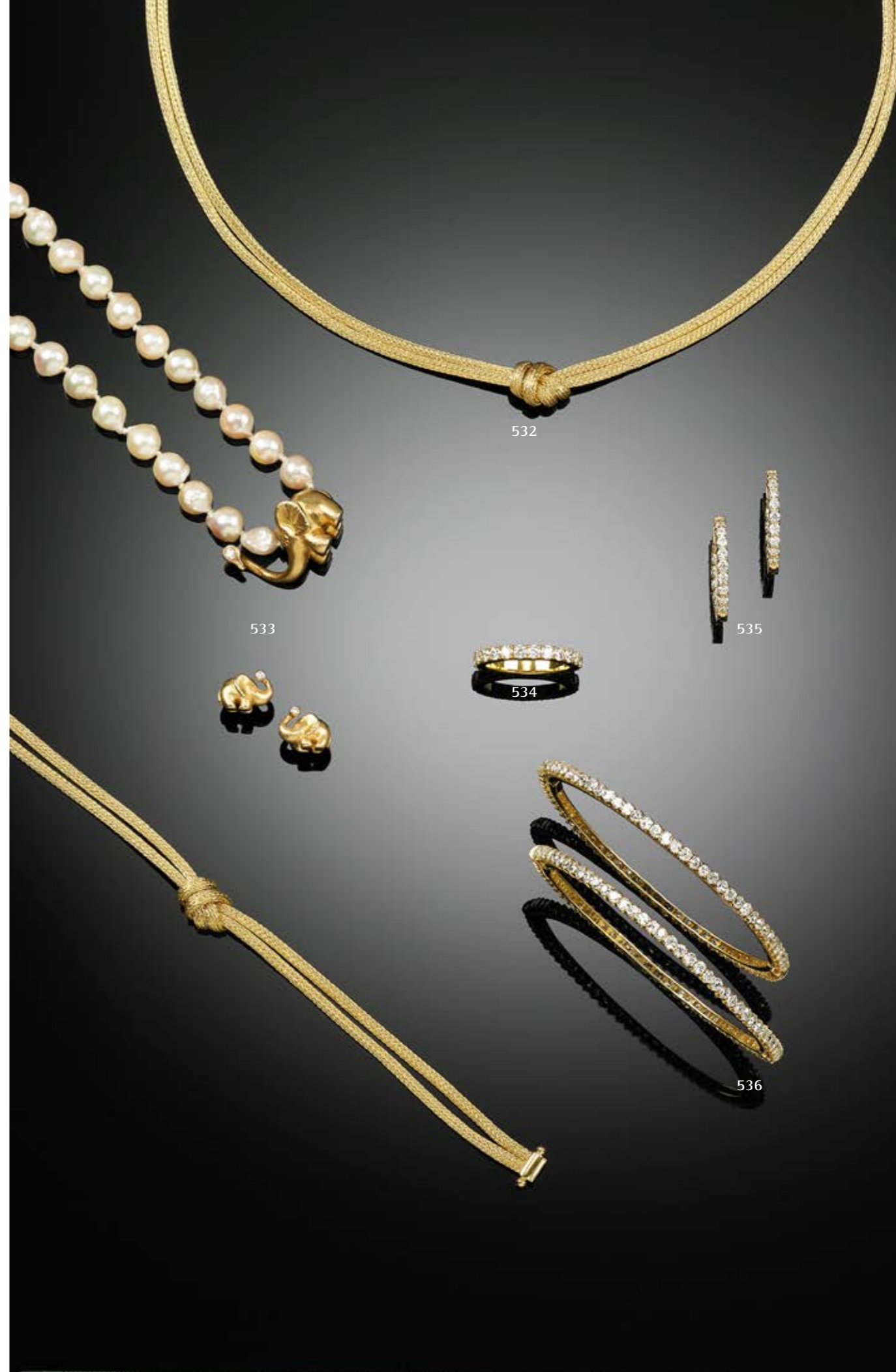
Cut quality: Triple excellent-cut. Hearts & Arrows.

DKK 15,000–20,000 / € 2,000–2,700

536

A pair of diamond bangles each set with numerous old-cut diamonds, mounted in 18k gold. Diam. app. 5.7 cm. Weight app. 21.5 g. (2)

DKK 40,000–50,000 / € 5,400–6,700





537
MARLENE JUHL - JØRGENSEN
 A tourmaline necklace set with numerous faceted beads of tourmaline, mounted in 22k gold. Bead diam. app. 3.5 mm. L. app. 92 cm. Weight app. 26.5 g.
 Accompanied by original case.
 DKK 20,000–30,000 / € 2,700–4,050

538
 A pair of diamond ear pendants each set with an old-cut diamond weighing a total of app. 1.03 ct., mounted in 18k gold. Colour: Top Crystal (I). Clarity: VS-SI. L. app. 1.8 cm. (2)
 DKK 15,000–20,000 / € 2,000–2,700

539
 A morganite and diamond ring set with a modified cushion-cut morganite and old-cut diamonds, mounted in 14k gold. Size 57.
 DKK 10,000–15,000 / € 1,350–2,000

540
MARLENE JUHL - JØRGENSEN
 A pair of sapphire ear pendants each set with numerous multi-coloured faceted beads of sapphire, mounted in 18k gold. W. app. 2.0 cm. L. app. 6.5 cm. (2)
 DKK 10,000–15,000 / € 1,350–2,000

541
MARLENE JUHL - JØRGENSEN
 A tourmaline ring set with a fancy-cut tourmaline flanked by two pear-shaped tourmalines weighing a total of app. 6.10 ct., mounted in 18k gold. Size 55.
 DKK 20,000–25,000 / € 2,700–3,350

542
 An amethyst, tourmaline and diamond bracelet set with numerous emerald-cut tourmalines, amethysts, aquamarines, smoky quartz, green quartz, morganite and single-cut diamonds, mounted in 18k gold. L. app. 19 cm. DKK 8,000–10,000 / € 1,100–1,350



537



538



539



540



541



542



543

A diamond necklace set with numerous brilliant-cut diamonds weighing a total of app. 12.01 ct., mounted in 18k white gold. Colour: Top Wesselton (F). Clarity: VS. L. app. 41 cm.

Cut quality: Triple excellent-cut. Hearts & Arrows.

DKK 90,000–100,000 / € 12,000–13,500

544

A diamond ring set with a princess-cut diamond weighing app. 2.50 ct. encircled and flanked by numerous brilliant-cut diamonds weighing app. 2.60 ct., totalling app. 5.10 ct., mounted in 18k white gold. Colour: Wesselton (H). Clarity: P1. Size 52.

DKK 40,000–50,000 / € 5,400–6,700

545

A diamond ring set with an old-cut diamond weighing app. 3.02 ct. flanked by numerous brilliant-cut diamonds, totalling app. 3.46 ct., mounted in 18k white gold. Colour: Cape (M). Clarity: SI. Grading brilliant-cut diamonds: D-E/VVS. Size 54.

Accompanied by IGI report no. 549289507 medfølger. 2022. DKK 80,000–100,000 / € 11,000–13,500

546

A diamond eternity ring set with numerous brilliant-cut diamonds weighing a total of app. 3.52 ct., mounted in 18k white gold. Colour: Wesselton-Top Crystal (H-I). Clarity: VS-SI. Size 55.

DKK 30,000–40,000 / € 4,050–5,400

547

A diamond bracelet set with numerous brilliant-cut diamonds weighing a total of app. 4.23 ct., mounted in 14k white gold. Colour: Top Wesselton (F). Clarity: VS. L. app. 17.7 cm.

Cut quality: Triple excellent-cut. Ideal-cut.

DKK 40,000–50,000 / € 5,400–6,700



543



544



545



546



547



548

A diamond necklace set with numerous brilliant-cut diamonds weighing a total of app. 2.77 ct., mounted in 18k white gold. Top Wesselton-Wesselton (G-H). Clarity: VVS-VS. L. app. 42 cm.

DKK 20,000–25,000 / € 2,700–3,350

549

A diamond eternity ring set with numerous brilliant-cut diamonds weighing a total of app. 1.80 ct., mounted in 18k white gold. Colour: Top Wesselton-Wesselton (G-H). Clarity: VS-SI. W. app. 3.5 mm. Size app. 53.

DKK 12,000–15,000 / € 1,600–2,000

550

A diamond necklace set with numerous brilliant-cut diamonds weighing a total of app. 1.82 ct., mounted in 18k white gold. Colour: Top Wesselton (F-G). Clarity: VS-SI. L. app. 90 cm.

DKK 15,000–18,000 / € 2,000–2,400

551

A sapphire and diamond ring set with a natural rectangular cushion-cut Ceylon sapphire weighing app. 9.98 ct. flanked by trapeze-cut diamonds weighing a total of app. 0.29 ct., mounted in 18k white gold. Colour: Top Wesselton-Wesselton (G-H). Clarity: VVS-VS. Size 55.

Accompanied by GTS report no. GRS2019-034272 indicating; "Characteristics corresponding to those of a natural sapphire from Sri Lanka". 2019.

DKK 40,000–60,000 / € 5,400–8,050

552

A sapphire and diamond ring set with an oval-cut sapphire weighing app. 2.40 ct. encircled by numerous brilliant-cut diamonds weighing a total of app. 0.60 ct., mounted in platinum. Colour: Wesselton (H). Clarity: VVS-VS. Size 52.

DKK 10,000–15,000 / € 1,350–2,000

553

A tanzanite and diamond ring set with an emerald-cut tanzanite weighing app. 7.29 ct. flanked by baguette and brilliant-cut diamonds weighing a total of app. 1.00 ct., mounted in 18k white gold. Colour: Top Wesselton-Wesselton (G-H). Clarity: VVS-SI. Size 53.

DKK 20,000–25,000 / € 2,700–3,350





554

A sapphire and diamond necklace set with a pear-shaped sapphire encircled by numerous brilliant-cut diamonds weighing a total of 1.00 ct., mounted in 18k partly satinated white gold. Colour: Top Wesselton-Wesselton (F-H). Clarity: VS-SI1. L. app. 40 cm. Weight app. 25 g. Italy, circa 1950-60. Accompanied by original case.

DKK 10,000-15,000 / € 1,350-2,000

555

A pair of sapphire and diamond ear clips each set with modified circular-cut natural sapphires weighing a total of app. 4.00 ct. encircled by numerous brilliant-cut diamonds weighing a total of app. 3.00 ct., mounted in 18k white gold. Colour: Top Wesselton (F-G). Clarity: VVS-VS. L. app. 2.4 cm. (2)

DKK 30,000-40,000 / € 4,050-5,400

556

A sapphire and diamond ring set with an oval-cut sapphire weighing app. 2.80 ct. encircled by numerous brilliant-cut diamonds weighing a total of app. 1.50 ct., mounted in 18k white gold. Colour: Top Wesselton-Crystal (G-J). Clarity: SI-P1. App. size 54.

DKK 8,000-10,000 / € 1,100-1,350

557

A sapphire and diamond brooch set with numerous cabochon sapphires weighing a total of app. 24.00 ct. and single and brilliant-cut diamonds weighing a total of app. 1.50 ct., mounted in 18k white gold. Colour: Wesselton-Crystal (H-J). Clarity: VS-P1. Diam. app. 4 cm. Circa 1950-60.

DKK 25,000-30,000 / € 3,350-4,050

558

A pair of sapphire and diamond ear pendants each set with an oval-cut sapphire weighing a total of app. 3.60 ct. and numerous brilliant-cut diamonds weighing a total of app. 3.80 ct., mounted in 18k white gold. Colour: Top Wesselton-Wesselton (F-H). Clarity: VS-SI1. L. app. 4 cm. Italy, circa 1950-60. (2) Accompanied by original case.

DKK 15,000-18,000 / € 2,000-2,400

559

WILLY JUNGET

A sapphire and diamond ring set with an oval-cut sapphire weighing app. 3.50 ct. encircled by numerous brilliant-cut diamonds weighing a total of app. 0.70 ct., mounted in 14k white gold. Colour: Top Wesselton (F-G). Clarity: VS. Size app. 56.

DKK 10,000-15,000 / € 1,350-2,000

560

A diamond bracelet set with numerous brilliant-cut diamonds weighing a total of app. 1.85 ct., mounted in 18k white gold. Colour: Top Wesselton-Wesselton (G-H). Clarity: VS-SI. L. app. 18 cm. Weight app. 15 g.

Accompanied by case.

DKK 10,000-15,000 / € 1,350-2,000





561

A diamond necklace set with numerous brilliant-cut diamonds weighing a total of app. 8.00 ct., mounted in 18k white gold. Colour: Top Wesselton-Crystal (G-J). Clarity: P1. L. necklace app. 42.0 cm. L. pendant app. 8.5 cm.

DKK 30,000–40,000 / € 4,050–5,400

562

A pair of diamond ear studs each set with a brilliant-cut diamond weighing a total of app. 2.01 ct., mounted in 18k white gold. Colour: Crystal (J). Clarity: VS2-SI1. (2)

Accompanied by GIA certificate nos. 6241836750 and 2247379262. 2016 and 2017.

DKK 40,000–50,000 / € 5,400–6,700

563

A pair of diamond ear pendants each set with numerous brilliant-cut diamonds weighing a total of app. 3.29 ct., mounted in 18k white gold. Can be used as loops. Colour: Top Wesselton (F). Clarity: VS. L. app. 6.1 cm. (2)

Cut quality: Triple excellent-cut. Hearts & Arrows.

DKK 30,000–35,000 / € 4,050–4,700

564

A diamond ring set with a brilliant-cut diamond weighing app. 0.90 ct. encircled by numerous brilliant-cut diamonds weighing a total of app. 0.70 ct., mounted in 18 white gold. Colour: River-Top Wesselton (E-F). Clarity: VVS-VS. App. size 54. Diamond with laser inscription.

Accompanied by GIA report no. 7433432733. 2022.

Cut grade: Very Good.

Polish: Very Good.

Symmetry: Excellent.

DKK 60,000–70,000 / € 8,050–9,400

565

A diamond eternity ring set with numerous brilliant-cut diamonds weighing a total of app. 2.70 ct., mounted in 18k white gold. Colour: Top Wesselton (F-G). Clarity: VS-SI. Size 53.5.

DKK 25,000–30,000 / € 3,350–4,050

566

A diamond bracelet set with numerous brilliant-cut diamonds weighing a total of app. 7.96 ct., mounted in 18k white gold. Colour: Top Wesselton (F-G). Clarity: SI. L. app. 18 cm.

DKK 60,000–70,000 / € 8,050–9,400





567

A. DRAGSTED

A diamond necklace set with numerous brilliant and single-cut diamonds weighing a total of app. 1.20 ct., mounted in 18k white gold. Colour: Top Wesselton-Wesselton (G-H). Clarity: VS-SI. L. app. 42 cm. Weight app. 65.5 g. Circa 1960-70.

DKK 15,000-20,000 / € 2,000-2,700

568

A pair of ruby and diamond ear pendants each set with an oval-cut ruby weighing a total of app. 2.40 ct. encircled by numerous brilliant-cut diamonds weighing a total of app. 1.50 ct., mounted in 18k white gold. Colour: Top Wesselton-Wesselton (G-H). Clarity: P1. L. app. 1.5 x 1.1 cm. (2)

DKK 12,000-15,000 / € 1,600-2,000

569

A ruby and diamond ring set with an oval-cut ruby weighing app. 2.01 ct. flanked by two brilliant-cut oval diamonds weighing a total of app. 0.60 ct., mounted in platinum. Colour: Top Wesselton-Wesselton (G-H). Clarity: VS-SI. Size 52.5.

DKK 25,000-30,000 / € 3,350-4,050

570

A ruby and diamond ring set with an oval-cut presumably Burma ruby weighing app. 3.50 ct. encircled by numerous brilliant-cut diamonds weighing a total of app. 1.70 ct., mounted in 18k white gold. Colour: Top Wesselton-Wesselton (G-H). Clarity: SI-P. Size 53. Circa 1950-60.

DKK 10,000-15,000 / € 1,350-2,000

571

A ruby and diamond ring set with an oval-cut ruby weighing app. 8.00 ct. flanked by baguette-cut diamonds weighing a total of app. 0.30 ct., mounted in 14k white gold. Colour: Wesselton (H). Clarity: VS. App. size 54.5.

DKK 10,000-15,000 / € 1,350-2,000

572

A diamond bracelet set with numerous brilliant-cut diamonds weighing a total of app. 1.05 ct., mounted in 18k white gold. Colour: Wesselton-Top Crystal (H-I). Clarity: SI. L. app. 18 cm.

DKK 10,000-15,000 / € 1,350-2,000



567



568



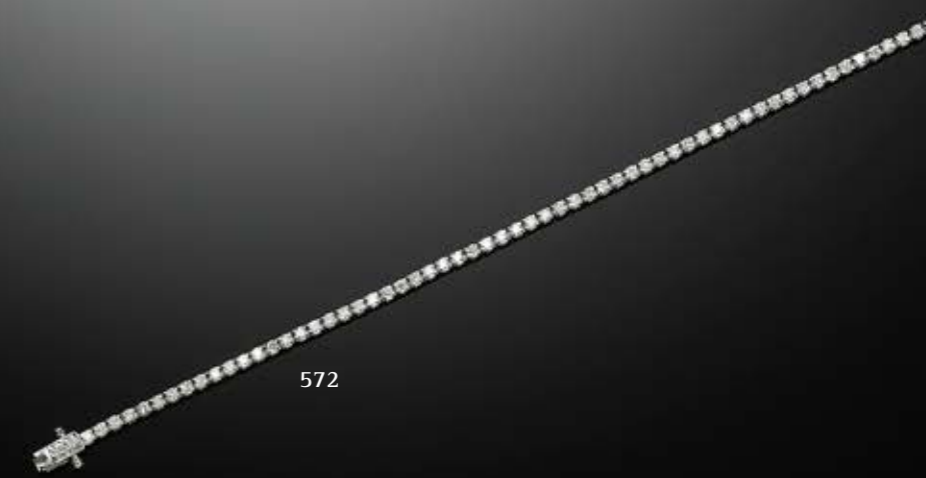
569



570



571



572



573

A diamond necklace set with numerous brilliant-cut diamonds weighing a total of app. 3.00 ct., mounted in 18k white gold. Colour: Wesselton-Crystal (H-J). Clarity: VS-P1. L. 42 cm.

DKK 20,000–30,000 / € 2,700–4,050

574

A necklace and a diamond pendant set with a pear-shaped brilliant-cut diamond weighing app. 1.51 ct. encircled by numerous brilliant-cut diamonds weighing a total of app. 0.42 ct., mounted in 18k white gold. Colour: Top Wesselton-Light Yellow (G-O). Clarity: VVS-SI. L. app. 45 cm.

DKK 20,000–30,000 / € 2,700–4,050

575

A pair of diamond ear pendants each set with a pear-shaped brilliant-cut diamond weighing a total of app. 2.00 ct. encircled by numerous brilliant-cut diamonds weighing a total of app. 0.40 ct., totalling app. 2.40 ct., mounted in 18k white gold. L. app. 2 cm. (2)

DKK 25,000–30,000 / € 3,350–4,050

576

A diamond eternity ring set with numerous brilliant-cut diamonds weighing a total of app. 2.56 ct., mounted in 18k white gold. Colour: River-Top Wesselton (D-F). Clarity: VVS. Size app. 54.

Cut quality: Triple excellent-cut. Hearts & Arrows.

DKK 25,000–30,000 / € 3,350–4,050

577

A pair of diamond ear pendants each set with oval, pear-shaped and brilliant-cut diamonds weighing a total of app. 1.73 ct., mounted in 18k white gold. Colour: Top Wesselton-Crystal (G-J). Clarity: VVS-SI2. L. app. 3 cm. (2)

DKK 10,000–15,000 / € 1,350–2,000

578

A diamond bracelet set with numerous brilliant-cut diamonds weighing a total of app. 3.90 ct., mounted in 18k white gold. Colour: Wesselton (H). Clarity: VS-SI. L. app. 17 cm.

DKK 25,000–30,000 / € 3,350–4,050





579

D. ANAGNOSTOPOULOS

A necklace with a diamond pendant in the shape of a heart set with numerous brilliant-cut white and cognac coloured diamonds weighing a total of app. 5.70 ct., mounted in 18k gold and partly rhodinated white gold. Colour: Top Wesselton (F-G). Clarity: VS-SI. L. pendant app. 2.8 cm. L. necklace app. 60.0 cm. Accompanied by original certificate. 2010.

DKK 15,000–20,000 / € 2,000–2,700

580

MARLENE JUHL - JØRGENSEN

A sapphire, tourmaline and diamond necklace set with fancy-cut sapphires and tourmalines encircled by numerous single-cut diamonds weighing a total of app. 0.98 ct., mounted in oxidized sterling silver and 18k gold. L. app. 80 cm.

DKK 20,000–25,000 / € 2,700–3,350

581

A diamond ring set with numerous baguette, marquise, heart-shaped brilliant-cut, trapeze and princess-cut diamonds weighing a total of app. 6.40 ct., mounted in 18k white gold. Colour: Top Wesselton-Top Cape (G-K). Clarity: SI-P1. Diam. app. 3.5 cm. Size 56.

DKK 30,000–40,000 / € 4,050–5,400

582

MARLENE JUHL - JØRGENSEN

A pair of diamond ear pendants each set with numerous rose-cut diamonds, mounted in 18k gold and oxidized sterling silver. W. app. 3 cm. L. app. 5 cm. (2)

DKK 20,000–30,000 / € 2,700–4,050

583

A. HALBERSTADT

A diamond ring set with numerous brilliant-cut white diamonds weighing a total of app. 2.29 ct. and numerous brilliant-cut black diamonds weighing a total of app. 1.99 ct., mounted in 18k white gold. Colour: Top Wesselton (F). Clarity: VVS1. Size app. 65. 2010.

Retail price DKK 50,000 in 2010.

Accompanied by original case and a copy of the receipt.

DKK 10,000–15,000 / € 1,350–2,000

584

VIVIANNA TORUN BÜLOW - HÜBE

A smoky quartz bangle set with square-cut smoky quartz, mounted in sterling silver. Design no. 203 B. Diam. app. 6 cm. Georg Jensen after 1945.

DKK 10,000–12,000 / € 1,350–1,600



579

580

582

581

583

584



585
GEORG JENSEN

A sapphire jewellery set comprising a necklace and a bracelet each set with numerous circular-cut sapphires, mounted in 18k gold. Necklace design no. 74. L. app. 19 and 42 cm. Total weight app. 35.5 g. Georg Jensen, circa 1920. (2)
Accompanied by original case.

Similar necklace depicted in Janet Drucker: Georg Jensen, A Tradition of Splendid Silver. 1997. P. 176.

DKK 50,000–60,000 / € 6,700–8,050

586

A pair of sapphire, emerald and diamond ear clips each set with a circular-cut sapphire, emerald and a brilliant-cut diamond weighing a total of app. 0.30 ct., mounted in 18k gold. L. app. 2.3 cm. Total weight app. 24.5 g. (2)
Accompanied by jewellery bag.

DKK 8,000–10,000 / € 1,100–1,350

587^{ARR}

OLE BENT PETERSEN

A sapphire and diamond ring in the shape of a flag set with numerous circular-cut pink sapphires and brilliant-cut diamonds, mounted in 14k gold and white gold. Size 48. 1977.

Accompanied by original case.

DKK 8,000–10,000 / € 1,100–1,350

588

A pair of sapphire and diamond ear studs each set with a circular-cut sapphire weighing a total of app. 1.45 ct. encircled by numerous old-cut diamonds weighing a total of app. 2.14 ct., mounted in 18k gold. Diam. app. 1.2 cm. Circa 1930. (2)

DKK 25,000–30,000 / € 3,350–4,050

589

VAN CLEEF & ARPELS

A ruby and diamond gold case with a clasp in the shape of a flower set with cabochon rubies and single-cut diamonds, mounted in 18k gold and platinum. L. app. 8.5 x 5.3 cm. Weight app. 93 g. Ref. no. 2542. French marks. Circa 1950.

DKK 30,000–35,000 / € 4,050–4,700





590

GEORG JENSEN

A necklace "Zephyr" of 18k gold. L. app. 45.5 cm. Weight app. 44 g. Design no. 1500. Design Regitze Overgaard. Georg Jensen after 1945.

Accompanied by original case.

DKK 10,000–15,000 / € 1,350–2,000

591

OLE LYNNGAARD

An aquamarine and diamond pendant "Lotus" set with a cabochon aquamarine and brilliant-cut diamonds weighing a total of app. 0.10 ct., mounted in 18k gold and rose gold. Accompanied by black string with end pieces of 18k gold. Colour: Top Wesselton (G). Clarity: VS. L. app. 3.5 cm. Design Charlotte Lynggaard.

Retail price app. DKK 47,000.

Accompanied by original case.

DKK 10,000–15,000 / € 1,350–2,000

592

A diamond eternity ring set with numerous brilliant-cut diamonds weighing a total of app. 4.18 ct., mounted in 18k gold. Colour: Wesselton (H). Clarity: VS. App. size 54.

Cut quality: Triple excellent-cut. Hearts & Arrows.

DKK 50,000–60,000 / € 6,700–8,050

593^{ARR}

BENT EXNER

A peridot ring set with an oval cabochon peridot, mounted in 18k gold. App. size 47. Weight app. 22.5 g. 1980. *DKK 8,000–10,000 / € 1,100–1,350*

594

A diamond ring set with an oval brilliant-cut Fancy Light Grayish Greenish diamond weighing app. 0.64 ct. encircled by numerous brilliant-cut white diamonds weighing a total of app. 0.57 ct., mounted in 18k gold. Colour: Wesselton (H). Clarity: VVS-P1. Size 54.

Cut quality: Triple excellent-cut. Ideal-cut.

Accompanied by ALGT report no. 66173596. 2022.

DKK 20,000–25,000 / € 2,700–3,350

595

A bracelet of 18k gold. L. app. 19 cm. W. app. 3 cm. Weight app. 80 g.

Accompanied by an extra link of 1 cm.

DKK 15,000–20,000 / € 2,000–2,700



590

591

592

593

594

595



596

596

CHANEL

A "Classic Double Flap" bag of quilted white leather with gold-toned hardware, CC lock, double chain strap, four interior and one exterior pocket and white leather lining. App. 23 x 15 x 6 cm.

Accompanied by Carte D'Authenticité and original case.

DKK 20,000–30,000 / € 2,700–4,050

599

CHANEL

A "Classic Double Flap" bag of quilted black leather with gold-toned hardware, CC lock, chain strap, four interior and one exterior pocket and black leather lining. App. 23 x 15 x 6 cm.

DKK 20,000–30,000 / € 2,700–4,050



599

597

CHANEL

An "East West Chocolate Bar" bag of quilted metallic leather with gold-toned hardware, CC lock, chain strap, three interior pockets and yellow leather lining. App. 27 x 13 x 4 cm.

DKK 10,000–15,000 / € 1,350–2,000



597



600

600

CHANEL

A "Classic Double Flap" bag of quilted black leather with gold-toned hardware, CC lock, double chain strap, four interior and one exterior pocket and burgundy leather lining. App. 26 x 16 x 7 cm.

DKK 20,000–30,000 / € 2,700–4,050



598

598

CHANEL

A "Classic Double Flap" bag of quilted yellow leather with gold tone hardware, CC turn lock, chain strap, four interior pockets and one exterior pocket. L. app. 26 x 16 x 7 cm.

DKK 25,000–30,000 / € 3,350–4,050

601

CHANEL

A "Classic Double Flap" bag of quilted black silk with gold-toned hardware, CC lock, chain strap, four interior and one exterior pocket and black leather lining. App. 26 x 17 x 7 cm.

Accompanied by Carte D'Authenticité.

DKK 20,000–30,000 / € 2,700–4,050



601

602

CHANEL

A "Wallet On A Chain" bag of quilted dark blue leather with silver toned hardware, chain strap, one exterior and three interior pockets and black fabric lining. App. 13 x 19 x 4 cm.

Accompanied by original dust bag.

DKK 8,000-10,000 / € 1,100-1,350



602



605

605

CHANEL

A "Wallet On A Chain" bag of black Caviar leather with gold toned hardware, chain strap, one exterior and four interior pockets, two and black lining. App. 12 x 19 x 3 cm.

Accompanied by original dust bag.

DKK 8,000-10,000 / € 1,100-1,350



603

603

CHANEL

A "Mini Chain Me Flap Bag" of quilted metallic leather with silver toned hardware, double chain strap, one interior pocket and black fabric lining. App. 13 x 20 x 4 cm.

Accompanied by original dust bag.

DKK 8,000-10,000 / € 1,100-1,350

606

CHANEL

A "Double Flap Bag" of quilted black lambskin with double chain strap, gold toned hardware, three interior and one exterior pocket, CC turn lock, and burgundy leather lining. App. 16 x 26 x 6 cm.

Accompanied by original dust bag.

DKK 20,000-30,000 / € 2,700-4,050



606

604

CHANEL

A "Classic Double Flap" bag of quilted black patent leather with silver-toned hardware, CC lock, double chain strap, four interior pockets one exterior pocket and black leather lining. App. 25 x 16 x 7 cm.

DKK 18,000-20,000 / € 2,400-2,700



604



607

607

HERMÈS

A "Birkin" 35 of black leather with two handles, palladium hardware, padlock, keys and keystring.

Accompanied by original case and dust bag.

DKK 40,000-60,000 / € 5,400-8,050

INDEX

A		
Ancher, Anna	120	
	121, 126, 127	
Ancher, Michael	101, 102	
	108, 111, 168	
Andersen-Lundby, A.	166	
Anson, Georg	233	
Arnesen, Vilhelm	151	
Aubin, Nicolas	240	
B		
Bauhin, Johann	235	
Binner, Bodil	484	
Bircherod, Jens	211	
Black, Starr & Frost	476	
Braekeleer, Ferdinand de	146	
Brendekilde, H. A.	154, 155	
Bruun, Johan Jacob	145	
Bulgari	524	
Bülów-Hübe, Vivianna Torun	584	
C		
Cantemir, Dimitrie	228	
Cariot, Gustave Camille Gaston	176	
Carlman, C.F.	439	
Cartier	396, 397, 426	
Cavendish, William	238	
Chanel	596, 597	
	598, 599, 600	
	601, 602, 603	
	604, 605, 606	
Chardin, John	221	
Chopard	429, 431, 456	
Christiani, Wilhelm Ernst	201	
Clement, G. F.	106, 118	
Coin, Roberto	388, 392	
Comte du Passage, Arthur Marie		
Gabriel	117	
Crantz, Albert	204	
Cranz, David	212	
D		
D. Anagnostopoulos	579	
Deniere et Fils	367	
Denner, Balthasar, attributed to	138	
Dietmann, K. Gottlob	220	
Dragsted, A.	510, 567	
Du Halde, Jean-Baptiste	223	
Dubois, Jacques	304	
E		
Eckersberg, C. W.	192, 196	
Estienne, Robert	245	
Exner, Bent	593	
Exner, Julius	98, 172	
F		
Fischer, Paul	95, 195	
Furetière, Antoine	249	
Furttenbach, Joseph	241	
G		
Gebhardi, Ludwig Albrecht	201	
Georg Jensen & Wendel	398	
	411, 477	
Gessner, Conrad	236	
Grammaticus, Saxo	205	
Griegst, Arje	389, 390, 391	
Guer, Jean-Antoine	226	
H		
Halberstadt, A.	393	
	394, 399, 400	
	432, 532, 583	
Hammershøi, Vilhelm	114	
Hansen, Heinrich	143	
Hansen, I. T.	174	
Hansen-Svaneke, Bertel	178	
Hanway, Jonas	227	
Hartmann's	427, 428, 485	
Haslund, Otto	180	
Heinrich-Hansen, Adolf	164	
Hermès	607	
Hertz, P.	404	
Hollming, August	478	
Holm, Emil	177	
Holmstrup, V.	408, 417, 422	
Holsøe, Carl	91, 157, 173	
I		
Ilsted, Peter	113	

J		
Jacobæus, Holger	209	
Jensen, Georg	585, 590	
Jensen, I. L.	107, 182, 183	
Jerichau Baumann, Elisabeth	124	
	131, 132	
Jorge Juan - Antonio de Ulloa	230	
Juhl-Jørgensen, Marlene		
	475, 537, 540	
	541, 580, 582	
Junget, Willy	559	
Juuel, Andreas	184	
Jørgensen, Aksel	159	
K		
Kieldrup, A. E.	188	
Koistinen, Olov Andreevich	522	
Kraft, Jens	244	
Krøyer, P. S.	94	
Købke, Christen	193	
Küchler, Albert	171	
L		
La Bibliothèque	342	
la Cour, Janus	92, 179	
Lamberty, Guillaume de	242	
Langen, Johann Joachim	218	
Law, John	206	
Linke, Francois	379	
Liser, Franz	215	
Locher, Carl	165	
Lubieniecki, Stanislaw	234	
Lund, F. C.	156	
Lundbye, Johan Thomas	103	
Luther, Martin	207, 217, 219	
Lynggaard, Ole	412, 424, 425	
	496, 497, 500	
	520, 533, 591	
Lyschander, Claus Christoffersen		
	203	
Læssøe, Thorald	167, 170, 189	
M		
Matthæus, Antonius	231	
Melbye, Anton	150	
Melbye, Vilhelm	191	

INDEX

Mocquet, Jean	225	
Monconys, Balthasar de	229	
Møller, I. P.	90	
Mølsted, Christian	169	
Mønsted, Peder	96, 97, 152	
	153, 163, 190	
N		
Niceron, Jean-François	213	
Niebuhr, Carsten	232	
Nieuhof, Johan	224	
Nimrod, Sylvius	246	
Nordberg, J.A.	248	
Nordin, Lorentz	299	
O		
Ozanam, Jacques	243	
P		
Pasch d. y., Lorens	139	
Pedersen, Viggo	162	
Perchin, Mikhail	511	
Peters, Oda	130	
Petersen, Ole Bent	587	
Philipsen, Theodor	175	
Piso, Willem	237	
Pissarro, Camille	116	
Pontoppidan, Erik	200	
Poussin, Nicolas, after	140	
Prague School, c. 1600	141	
Precht, Burchard, after	251	
Pérelle, Gabriel	214	
R		
Raadsig, Peter	186	
Rasmussen, Chr.	512	
Richardt, Ferdinand	199	
Ring, L. A.	99, 112, 115, 161	
Roos, Johann Heinrich, attributed to	142	
Rosenberg, G. E.	329	
Rousseau, Théodore	187	
Rubens, P. P., after	147	
Rørbye, Martinus	93	
	100, 105, 119	
	194, 197, 198	

S		
Scamozzi, Vincenzo	216	
Schildknecht, Wendelin	239	
Schlee, Oswald	208	
Seligmann, Georg	158	
Sirani, Elisabetta	123	
Skovgaard, P. C.	104, 185	
Storch, Frederik	110	
Stub, Ambrosius	202	
Ståhl, Ephraim	334, 335	
Syberg, Anna	136, 137	
T		
Thielemann, Alfred	471	
Thomsen, Emma	134	
Thorvaldsen, Bertel, workshop of	364	
Thévenot, Melchisédech	222	
Tiffany & Co.	419	
Tuxen, Laurits	109	
V		
Van Cleef & Arpels	531, 589	
Vesling, Johann	210	
W		
Wegmann, Bertha	122, 125, 128	
	129, 133, 135	
WIN	414	
Z		
Zahrtmann, Kristian	160	
Zedler, Johann Heinrich	247	
Zeeman/Nooms, Reinier, attributed to	149	



Disse købsvilkår udgør Bruun Rasmussen Kunstauktioner A/S' ("BRK") købsvilkår for traditionelle auktioner og er gældende fra 1. februar 2017. BRK kan til enhver tid ændre købsvilkårene.

Ved bud accepterer budgiver/køber at være bundet af de til enhver tid gældende købsvilkår, som fremgår på bruun-rasmussen.dk. Købsvilkårene gælder både i forhold til erhvervsdrivende og forbrugere.

FØR AUKTIONEN

1 VURDERING AF GENSTANDE

1.1 Alle udbudte genstande er vurderet af BRK. Vurderingen er et skøn over det forventede hammerslag, jf. punkt 5.3. Vurderingen er baseret på tidligere salg af samme type genstande og erfaringer hos BRK. Hammerslag kan derfor falde højere eller lavere ud end vurderingen.

2 BESKRIVELSE AF GENSTANDE

- 2.1 Udbudte genstande præsenteres med fotos og beskrivelse i kataloger og på bruun-rasmussen.dk. Beskrivelsen foretages efter bedste overbevisning af BRK og ud fra en nøje undersøgelse efter den på salgstidspunktet herskende opfattelse blandt eksperter.
- 2.2 De udbudte genstande er af en alder og art, der bevirker, at de ofte er behæftede med slitage, mangler, beskadigelser og reparationer. Som udgangspunkt sælges alt som brugte genstande, og derfor indeholder beskrivelsen i kataloget og på bruun-rasmussen.dk ikke en redegørelse for ovenstående punkter eller genstandens stand.
- 2.3 I visse tilfælde vælger BRK at beskrive en genstands oprindelse. Det sker, hvis en tidligere ejer er offentlig kendt, og/eller hvis historien om et tidligere ejerskab belyser genstanden og dens art. Omvendt sker det også, at sådanne informationer udelades fra beskrivelsen, f.eks. for at imødekomme sælgers ønske om diskretion.
- 2.4 Vurderingen og beskrivelsen kan blive revideret forud for auktionen. Ændringer offentliggøres på bruun-rasmussen.dk

3 EFTERSYN

- 3.1 Udbudte genstande udstilles op til auktionen i et showroom hos BRK. Potentielle budgivere opfordres til at se genstanden efter i detaljer og har selv ansvaret for at forvise sig om dens stand på disse eftersyn, hvor der også er mulighed for at rådføre sig hos vurderingssagkyndige.
- 3.2 Hvis en potentiel køber ikke har mulighed for at besigtige genstanden ved selvsyn, kan der i de fleste tilfælde udfærdiges en konditionsrapport. Beskrivelsen heri er foretaget efter BRK's bedste overbevisning, men er ikke baseret på videnskabelige undersøgelser. En konditionsrapport tjener blot som identifikation og er ment som en hjælp til budgivere, der ikke selv har mulighed for at besigtige genstanden på eftersynet.

UNDER AUKTIONEN

4 BRK'S ROLLE

- 4.1 Salget af en genstand formidles af BRK på vegne af sælger. BRK afhænder altid udbudte genstande til den højst mulige pris under budgivningen.
- 4.2 Udbudte genstande kan have en med sælger aftalt mindstepris, hvorunder den ikke kan sælges. Denne pris er fortrolig.
- 4.3 De traditionelle auktioner overværes af en af Justitsministeriet beskikket auktionsleder, der sikrer, at auktionerne går retmæssigt for sig.

5 BUDGIVNING

- 5.1 Auktionerne afvikles i danske kroner. De tilnærmelsesvis beløb i euro/US dollar vil blive oplyst på skærme i auktionssalen og i øvrigt på opfordring.
- 5.2 Auktionarius bestemmer overbuds størrelse og i hvilket tempo, auktionen afvikles. Overbud stiger normalt med 5 % - 10 % i forhold til det foregående bud. Normalt sælges der 50-100 katalognumre i timen.
- 5.3 Hammerslag betegner både det forhold, at auktionarius slår med hammeren og derved markerer budgivningens afslutning, og den pris (budsum), den udbudte genstand sælges til. Se punkt 7 vedrørende beløb, der tillægges hammerslaget.
- 5.4 Køber er den budgiver, der opnår hammerslag. Ved hammerslaget indgås på baggrund af disse købsvilkår en bindende købs-/salgsaftale.
- 5.5 Bydes på andres vegne, hæfter budgiver som selvskyldnerkautionist for handlen.
- 5.6 Genstande købes som beset, og køber har uanset budtype ingen fortrydelsesret, heller ikke efter forbrugeraftaleloven.
- 5.7 Budgiver skal efter anvisninger fra BRK identificere sig og dokumentere sin betalingsdygtighed, f.eks. ved registrering af gyldigt betalings-/kreditkort, bankgaranti eller indbetaling af depositum.
- 5.8 BRK kan nægte at acceptere et bud, hvis en tilstrækkelig sikkerhed for betaling mangler, eller hvis budgiver tidligere har misligholdt betalingsforpligtigelser ved køb hos BRK.
- 5.9 Auktionslederen træffer i samråd med auktionarius afgørelse i alle tvivlstilfælde omkring budgivningen.

6 BUDTYPER

- 6.1 Der er følgende muligheder for at afgive bud:
- PERSONLIGT FREMMØDE:**
Registrering og udlevering af bydeskilt foregår ved indgangen til auktionssalen. Når budgiver ønsker at byde, signaleres dette til auktionarius ved at række bydeskiltet i vejret og tydeligt fremvise dets nummer.
- KOMMISSIONSBUD:**
Det ønskede maksimale bud kan afgives via bruun-rasmussen.dk frem til auktionens start eller pr. e-mail, fax eller telefon, så budet er modtaget senest 24 timer forud for auktionens start. En kommissionær byder på budgivers vegne inden for rammerne af det ønskede maksimalbud og vil altid afgive lavest muligt overbud.
- TELEFONBUD:**
I forhold til visse genstande er der mulighed for at blive ringet op af en medarbejder fra BRK, der vil byde på budgivers vegne under auktionen. Servicen kan bestilles via bruun-rasmussen.dk indtil tre timer før auktionens start.

LIVE BIDDING:

Det er muligt at følge auktionen live og byde med via bruun-rasmussen.dk

FORAUKTION:

Visse traditionelle auktioner indledes med en net-auktion. De højeste bud på net-auktionen danner udgangspunktet på den efterfølgende traditionelle auktion.

EFTER AUKTIONEN

7 BELØB, DER TILLÆGGES HAMMERSLAGET

- 7.1 I tillæg til hammerslaget, jf. punkt 5.3, skal køber for den enkelte genstand betale købersalær og, hvis betingelserne er opfyldt, de øvrige beløb, der er nærmere beskrevet nedenfor. Det samlede beløb, som køber skal betale til BRK, benævnes "købesummen".
- 7.1.1 Købersalær: Hammerslaget tillægges et salær til BRK. På de traditionelle auktioner udgør salæret 25,6 % af hammerslaget + moms af salæret, i alt 32 %. For frimærker og mønter udgørsalæret 20 % af hammerslaget + moms af salæret, i alt 25 %.
- 7.1.2 "LIVE bidding": BRK's "LIVE bidding"-software via bruun-rasmussen.dk er gratis at benytte for budgivere.
- 7.1.3 Fuldmoms: Visse genstande handles efter de gældende regler om fuldmoms. Her beregnes der moms på 25 % af både hammerslag og salær. Disse genstande er i beskrivelsen i kataloget og på bruun-rasmussen.dk mærket med symbolet "*" eller med teksten: "Dette emne handles i fuldmoms".
- 7.1.4 Kunstnerafgift: Ifølge dansk lovgivning om ophavsret skal der opkræves kunstnerafgift (følgeretsvederlag) for værker af nyere danske og visse udenlandske kunstnere, som enten er nulevende eller ikke har været døde i mere end 70 år. Kunstnerafgiften opkræves på vegne af VISDA. Disse værker er i kataloget mærket med "ARR" (Artist's Resale Right) og på bruun-rasmussen.dk med teksten "Dette emne er belagt med kunstnerafgift". Kunstnerafgiften tillægges hele hammerslaget + salær (ekskl. moms), når beløbet overstiger 300 euro, som angivet nedenfor:

Hammerslag + salær (ekskl. moms)	Betalingssats
300,01 - 50.000 euro	5%
50.000,01 - 200.000 euro	3%
200.000,01 - 350.000 euro	1%
350.000,01 - 500.000 euro	0.5%
over 500.000 euro	0.25%

Kunstnerafgiften kan ikke overstige 12.500 euro (ekskl. moms) for den enkelte genstand. Afgiften skal betales i danske kroner, og omregningskursen (EUR/DKK) fastsættes af VISDA.

- 7.1.5 Betalings-/kreditkortgebyr: BRK forbeholder sig ret til at opkræve de af indløsningselskaberne pålagte betalings-/kreditkortgebyrer. Satserne fremgår ved budgivning via bruun-rasmussen.dk og ved betaling.

8 BETALINGSFRIST

- 8.1 Købesummen forfalder til betaling ved hammerslaget, og køber har herefter otte dage til at betale købesummen til BRK.

9 BETALINGSMÅDER

- 9.1 Betaling kan ske på følgende måder:
- A: Med betalings-/kreditkort (Dankort, Visa, MasterCard, Maestro, Diners Club, JCB og China UnionPay) eller kontant (op til 19.999 kr.) i auktionssalen eller efterfølgende i en afdeling hos BRK. Bemærk, at vi ikke modtager 500-eurosedler.

B: Med betalings-/kreditkort (Dankort, Visa, MasterCard, Maestro, Diners Club og JCB) på bruun-rasmussen.dk under købers personlige side.

C: Via bankoverførsel til BRK's konto i Danske Bank: 4183 4310970638 · Swift/BIC: DABADKKK · IBAN: DK4130004310970638.

10 MOMSFRITAGELSE, -BETALING OG -DEPONERING

- 10.1 Visse købere kan vælge hvilken momstype, der skal være gældende for handlen. Valget skal meddeles BRK senest to hverdage efter købet og kan ikke omgøres.
- A: Momsregistrerede virksomheder i Danmark kan vælge, at handlen skal ske efter reglerne om fuldmoms, jf. punkt 7.1.3.
- B: Momsregistrerede virksomheder i et andet EU-land kan fritages for dansk moms, når det kan dokumenteres, at genstanden er transporteret til den udenlandske adresse, som køber har oplyst over for BRK, og som er anført på fakturaen. I sådanne tilfælde skal der afregnes moms efter de gældende regler i det land, hvor køber er momsregistreret. Det tilrådes at søge oplysning hos de lokale myndigheder. Køber kan undlade at gøre brug af muligheden for momsfrigatelse og i stedet betale dansk brugtmoms/fuldmoms.
- C: Købere med bopæl uden for EU kan fritages for dansk moms, når det kan dokumenteres, at genstanden er transporteret ud af EU. BRK udsteder så vidt muligt og mod gebyr de fornødne eksportpapirer, som skal fremvises ved toldmyndighederne. Køber kan undlade at gøre brug af muligheden for momsfrigatelse og i stedet betale dansk brugtmoms/fuldmoms.
- 10.2 Momsregistrerede virksomheder i et andet EU-land og købere med bopæl uden for EU skal deponere den danske moms af fakturabeløbet hos BRK, indtil eksporten er gennemført på dokumenteret lovligt vis. Foretages eksporten af en af BRK godkendt speditør, skal momsen ikke deponeres. Se listen over godkendte speditører på bruun-rasmussen.dk
- 11 **OVERSKRIDELSE AF BETALINGSFRIST**
- 11.1 Overskrides en betalingsfrist, herunder fristen i punkt 8, opkræves morarenter, som beregnes efter Nationalbankens officielle udlånsrente + 8 % om året af det skyldige beløb.
- 11.2 Betales købesummen inkl. renter ikke senest ti dage efter, at der er fremsat påkrav herom, er BRK berettiget til at søge købesummen betalt ved modregning i depositum/ved træk på bankgaranti eller at hæve købet.
- 11.3 Hæves købet, er BRK berettiget til at sælge genstanden på en ny auktion og kræve omkostningerne og en eventuel difference mellem hammerslag (samt salær), der er opnået på de to auktioner, betalt af den misligholdende køber.
- 11.4 Alle forfaldne krav (inkl. omkostninger), som ikke betales rettidigt, kan BRK i tillæg til inkasso søge inddrevet på følgende måder:
- A: For købers regning sælge genstande indleveret til auktion af eller på vegne af køber. Salget kan gennemføres uden hensyntagen til en aftalt mindstepris. Genstande indleveret til auktion kan ikke kræves udleveret, så længe forfalden gæld henstår ubetalt.
- B: Inddrage købers tilgodehavende hos BRK, herunder tilgodehavende fra salg af genstande indleveret af eller på vegne af køber, uanset om et sådant tilgodehavende stammer fra auktionssalg, som ligger forud for eller efter tidspunktet for købers misligholdelse.

12 AFHENTNING OG UDLEVERING

- 12.1 Ejendomsretten til en købt genstand overgår til køber, når hele købesummen inkl. eventuelle renter og gebyrer er betalt, og først herefter kan udlevering af genstanden finde sted.
- 12.2 Ved udlevering af en købt genstand forbeholder BRK sig retten til at kræve tilfredsstillende dokumentation for, at den person, som ønsker genstanden udleveret, enten selv er køberen eller er bemyndiget af køberen til at få genstanden udleveret.
- 12.3 Udlevering af visse våben kræver forevisning af gyldig våbentilladelse. Sådant krav er angivet med teksten "Køb af dette emne kræver forevisning af gyldig våbentilladelse" i kataloget og på bruun-rasmussen.dk
- 12.4 Købte genstande henligger fra hammerslaget for købers regning og risiko. Afhentning skal ske senest otte hverdage efter sidste auktionsdag.
- 12.5 Foretages afhentningen ikke rettidigt, transporteres de købte genstande til et lager for købers regning og risiko. Transporten koster 150 kr. inkl. moms pr. genstand, og opbevaringen koster 150 kr. inkl. moms pr. genstand pr. påbegyndt uge. Henligger en genstand uafhentet i så lang tid, at lagerlejen overstiger genstandens værdi, er BRK berettiget til for købers regning og risiko og uden hensyn til mindstepris at bortauktionere genstanden eller sælge den underhånden. Køber hæfter fortsat for udgifter til transport og lagerleje, der ikke dækkes ved sådant salg.
- 12.6 I henhold til gældende hvidvasklovgivning skal køber i visse tilfælde udlevere identitetsoplysninger og fremvise billed-id til BRK, før køber kan få den købte genstand i sin besiddelse

13 FORSENDELSE

- 13.1 Er køber forhindret i selv at afhente en genstand, tilbyder BRK for købers regning og risiko at emballere og arrangere forsendelse enten med post eller speditør. Se punkt 12.2 angående legitimation.

14 EKSPORTTILLADELSE

- 14.1 For at sikre at dansk kulturarv af afgørende betydning forbliver i Danmark, kan Kulturværtdiudvalget for visse genstandes vedkommende nedlægge eksportforbud. Hvis køber ønsker at eksportere en genstand ud af Danmark, hvor der er nedlagt et eksportforbud, annulleres købet, og Kulturværtdiudvalget er forpligtet til at overtage genstanden til den pris, der blev opnået på auktionen. Køber kan ikke rejse krav mod BRK som følge af, at et eksportforbud bliver nedlagt.
- 14.2 Visse genstande er omfattet af Washingtonkonventionen, også kendt som CITES, der har til formål at stoppe ulovlig handel med genstande fremstillet af udryddelsestruede vilde dyr og planter. Såfremt en genstand er omfattet af Washingtonkonventionen, CITES, liste 1, vil det fremgå af beskrivelsen på bruun-rasmussen.dk og være markeret med symbolet "©" i kataloget. Følgende regler gør sig gældende:
 - A: Genstande omfattet af Washingtonkonventionen, CITES, liste 1, må kun handles, når der foreligger en dispensation i form af et såkaldt CITES-salgscertifikat. BRK indhenter det fornødne certifikat fra Naturstyrelsen, der tillader handel og eksport til lande inden for EU. Dog kan genstande, som er færdigforarbejdet før 1947, frit handles inden for EU uden et certifikat.
 - B: Det er alene genstande omfattet af Washingtonkonventionen, CITES, liste 1, som er særkilt markeret på bruun-rasmussen.dk og i kataloget. Genstande omfattet af Washingtonkonventionen, CITES, liste 2, der frit kan sælges og transporteres inden for EU, er ikke særkilt markeret.
 - C: Ved eksport til lande uden for EU skal der uanset årstallet for genstandens færdigforarbejdning altid indhentes en CITES-reeksporttilladelse fra Naturstyrelsen,

når genstanden er omfattet af Washingtonkonventionen, CITES, liste 1 og 2. Denne eksporttilladelse kan normalt indhentes problemfrit, når liste 1-genstande enten er solgt med et CITES-salgscertifikat eller er færdigforarbejdet før 1947. Liste 2-genstande opnår ligeledes normalt problemfrit en reeksporttilladelse. Eventuelle omkostninger, der opkræves at de danske myndigheder i forbindelse med udstedelse af en reeksporttilladelse, vil blive pålagt købers faktura.

D: I forbindelse med eksport til lande uden for EU kan særlige regler gøre sig gældende ifm. den efterfølgende import, og køber opfordres til at indhente oplysninger fra egne myndigheder.

15 MANGLER VED KØBTE GENSTANDE

- 15.1 Købelovens mangelsregler kan finde anvendelse. Nedenfor er angivet et ikke udtømmende uddrag af købers mangelsbeføjelser.
- 15.2 Køber er berettiget til at annullere et køb, hvis beskrivelsen har været behæftet med væsentlige fejl, der har ført til et højere hammerslag, end en korrekt beskrivelse ville have resulteret i. I sådanne tilfælde vil den samlede købesum blive refunderet. Køber kan ikke kræve betaling af renter af købesummen eller kræve dækning af anden udgift eller tab.
- 15.3 Et køb kan ikke annulleres, og køber kan ikke kræve købesummen refunderet eller rejse noget andet krav mod BRK, hvis beskrivelsen af genstanden er i overensstemmelse med punkt 2, eller hvis en påvisning af falskneri havde krævet brug af videnskabelige metoder, der enten ikke var tilgængelige på salgstidspunktet, havde været uforholdsmæssigt omkostningskrævende at anvende eller havde ført til beskadigelse af den pågældende genstand.
- 15.4 Krav om annullering af et køb skal meddeles BRK, når køber er blevet bekendt med det forhold, der berettiger køber til at annullere købet, dog senest to år fra den seneste afhentningsdato efter punkt 12.4. Den købte genstand skal returneres til BRK i samme stand som på hammerslagstidspunktet. Overholdes disse betingelser ikke, mister køber retten til at annullere købet og kan ikke kræve købesummen refunderet. Køber er selv ansvarlig for at betale de omkostninger, der er forbundet med returnering af genstanden.

16 INDSIGELSE- OG ANSVARSBEGRÆNSNING

- 16.1 BRK tager forbehold for fejl, tekniske vanskeligheder samt udefrakommende misbrug eller forstyrrende påvirkning under auktionen. Budgivere kan ikke rejse noget krav mod BRK som følge heraf.
- 16.2 Køber er i alle tilfælde selv ansvarlig for korrekt betaling af moms og andre afgifter, gebyrer mv. i overensstemmelse med danske og udenlandske regler.
- 16.3 Medmindre andet fremgår af disse købsvilkår, kan BRK aldrig blive ansvarlig for budgivers/købers driftstab, avancetab, andre indirekte tab eller følgeskader.

17 PERSONDATAPOLITIK

- 17.1 Det er vigtigt for BRK at sikre fortrolighed og sikkerhed omkring budgivers/købers personlige oplysninger. Persondatapolitikken fremgår af bruun-rasmussen.dk.

18 KLAGE, TVISTLØSNING OG LOVVALG

- 18.1 Har budgiver/køber en klage, kan der altid rettes henvendelse til BRK.
- 18.2 Lykkes det ikke at finde en løsning, kan forbrugere sende en klage til Nævnenes Hus, Toldboden 2, 8800 Viborg, e-mail: naevneneshus.dk. Forbrugere med bopæl i et andet EU-land end Danmark kan klage til EU-Kommissionens online klageportal via hjemmesiden: <http://ec.europa.eu/odr>.
- 18.3 Tvister skal indbringes i Danmark ved Københavns Byret, jf. dog punkt 18.2. I forbrugerforhold gælder de ufravigelige værmetingsregler.

Jesper Bruun Rasmussen, auktionsholder

Rev. 08.22

CONDITIONS OF PURCHASE – LIVE AUCTIONS

These conditions of purchase represent Bruun Rasmussen Kunstauktioner A/S' ("BRK") conditions of purchase for live auctions and are effective from 1 January 2017. BRK may modify the conditions of purchase at any time.

By bidding, the bidder/buyer accepts the current conditions of purchase as they appear on bruun-rasmussen.dk. The conditions of purchase are applicable to both business owners and consumers.

BEFORE THE AUCTION

1 VALUATION OF ITEMS

- 1.1 All the offered items are valued by BRK. The valuation is an estimate based on the expected hammer price, see paragraph 5.3. The estimate is based on the previous sale of similar items as well as BRK's past experience. The hammer price can therefore be higher or lower than the estimated price.

2 DESCRIPTION OF ITEMS

- 2.1 Items up for auction are presented with photographs and descriptions in catalogues and on bruun-rasmussen.dk. The description is worded according to the best of BRK's knowledge and based on detailed research in accordance with the prevailing views among experts at the time of sale.
- 2.2 The items up for auction are of an age and nature that often mean that they are in a worn, repaired or damaged condition. As a starting point everything is sold as used items. For this reason, the descriptions in the catalogue or at bruun-rasmussen.dk do not include a statement regarding the above or the condition of the item.
- 2.3 In some cases, BRK may choose to describe an item's provenance. Such a description is made if a former owner is publicly known and/or if the story of previous ownership sheds further light on the item and its background. In other cases, such information is left out of the description, for instance to meet the seller's wish for privacy.
- 2.4 It is possible that the estimate and description are revised prior to the auction. Changes are published on BRK's website.

3 PREVIEW

- 3.1 Items up for auction are presented prior to the auction in one of BRK's showrooms. Potential bidders are encouraged to inspect the items closely and are responsible for determining the condition of the items at these previews, where they also have the opportunity to consult with the valuation experts.
- 3.2 If a potential buyer does not have the opportunity to inspect the item personally, a condition report can be drafted in most cases. The description in this report has been made according to BRK's honest conviction but is not based on scientific studies. A condition report only serves as an identification and is meant as an aid to bidders who do not have the opportunity to inspect the item at the preview.

DURING THE AUCTION

4 THE ROLE OF BRK

- 4.1 The sale of an item is facilitated by BRK on behalf of the seller, and BRK always sells items up for auction at the highest price offered during the bidding round.

- 4.2 Items up for auction can have a reserve price that has been agreed upon with the seller. The price is confidential and the item cannot be sold below this price.

- 4.3 The live auctions are presided over by one of the Danish Ministry of Justice's appointed auctioneers, ensuring that the auctions proceed correctly and lawfully.

5 BIDDING

- 5.1 The currency used while the auctions take place is Danish kroner. The approximate amount in euro/US dollars is shown on screens in the saleroom and also on request.
- 5.2 The auctioneer determines the size of the bid increment and the pace of the auction. Bid increments usually rise by 5% - 10% compared to the previous bid. Approximately 50-100 auction lots are sold per hour.
- 5.3 The hammer price refers both to the gavel used by the auctioneer that signifies the end of a bidding round on an item and to the price (bidding amount) that the item up for auction is sold for. See paragraph 7 regarding amounts added to the hammer price.
- 5.4 The buyer is the bidder that submits the highest bid, thereby obtaining the hammer price. At the moment the hammer price is determined, a binding purchase/sale agreement is entered into based on these conditions of purchase.
- 5.5 If bids are made on behalf of others, the bidder serves as surety for the transaction.
- 5.6 Items are purchased in their present state and condition, and regardless of the type of bidding the buyer has no right to cancel his purchase, neither under the Danish Consumer Contracts Act.
- 5.7 Bidders are required, in accordance with BRK's instructions, to identify themselves and document their ability to pay, for instance by registration of a valid debit/credit card, bank guarantee or a deposit.
- 5.8 BRK may refuse to accept a bid if a sufficient guarantee of the bidder's ability to pay is not provided, or if the bidder has previously defaulted on payment obligations on purchases from BRK.
- 5.9 The overseeing auctioneer will, in consultation with the auctioneer at the podium, decide what to do in matters of dispute concerning a bidding round.

6 TYPES OF BIDDING

- 6.1 Bidding options:

IN PERSON:

Registration and obtaining the bidding paddle take place at the entrance to the saleroom. When the bidder wishes to bid, it is signalled to the auctioneer on the podium by raising the bidding paddle in the air and clearly displaying its number.

COMMISSION BIDS:

The intended maximum bid can be submitted via bruun-rasmussen.dk until the start of the auction or by e-mail, fax or phone, so that the bid is received no later than 24 hours prior to the start of the auction. A commission agent bids on behalf of the bidder within the limits of the stated maximum bid. The commission agent will always bid the lowest possible amount to achieve the hammer price.

TELEPHONE BID:

With certain items it is possible to have a BRK employee call the bidder over the phone. The employee will then bid on behalf of the bidder during the auction. The service can be booked via bruun-rasmussen.dk up until three hours before the auction is set to begin.

LIVE BIDDING:

It is possible to follow the auction live and bid on the auction lots via bruun-rasmussen.dk.

PRE-AUCTION:

Some live auctions are preceded by an online auction. The highest bids from the online auction then represent the starting bids at the following live auction.

AFTER THE AUCTION

7 AMOUNTS ADDED TO THE HAMMER PRICE

- 7.1 In addition to the hammer price, see paragraph 5.3, the buyer pays a buyer's premium for the individual items as well as the other amounts described below if the conditions for these are applicable. The total amount that the buyer pays to BRK is called the "purchase price".
- 7.1.1 Buyer's Premium: The hammer price always includes an additional fee to BRK. At the live auctions, the fee is 25,6% of the hammer price + VAT of the fee, 32% in total. For stamps and coins, the fee is 20% of the hammer price + VAT of the fee, a total of 25%.
- 7.1.2 "LIVE Bidding": BRK's "LIVE Bidding" software is free to use for bidders on bruun-rasmussen.dk.
- 7.1.3 Full VAT: Certain items are sold at auction in accordance with the current rules regarding full VAT. In such a situation, a VAT of 25% is imposed on both the hammer price and the buyer's premium. These items are marked in the catalogue and on bruun-rasmussen.dk with the symbol "***", or with the text: "This item is subject to full VAT".
- 7.1.4 Artist's Resale Right: In accordance with Danish copyright law, a royalty fee covering the Artist's Resale Right has to be charged for works by newer Danish artists, and some foreign artists, who are either alive or have not been dead for more than 70 years. The royalty fee covering the Artist's Resale Right is charged on behalf of VISDA (Visual Rights Denmark). These works are marked "ARR" in the printed catalogue, and on bruun-rasmussen.dk the description of the works includes the text: "This lot is subject to the Artist's Resale Right". The royalty fee covering the Artist's Resale Right is added to the hammer price + the buyer's premium (excluding VAT) if the amount exceeds EUR 300, as indicated below:

Hammer price + buyer's premium (ex. VAT)	Payment Rate
300,01 - 50,000 euro	5%
50,000,01 - 200,000 euro	3%
200,000,01 - 350,000 euro	1%
350,000,01 - 500,000 euro	0.5%
over 500,000 euro	0.25%

The royalty fee covering the Artist's Resale Right cannot exceed EUR 12,500 (excluding VAT) for each item. The fee must be paid in Danish kroner, and the conversion rate (EUR/DKK) is set by VISDA.

- 7.1.5 Debit/Credit Card Fee: Amounts Added to the Hammer Price: BRK reserves the right to charge the debit/credit card fees imposed by the payment services companies. The rates will appear when bidding on bruun-rasmussen.dk and at payment.

8 PAYMENT DEADLINE

- 8.1 The purchase price falls due after the hammer price has been determined, and then the buyer has eight days to pay BRK the purchase price.

9 PAYMENT METHODS

- 9.1 The payment can be made in the following ways:
- A: With debit/credit card (Visa, MasterCard, Maestro, Diners Club, China UnionPay and JCB) or cash (up to DKK 19.999) in the saleroom or subsequently at one of

BRK's locations. Please note that we do not accept EUR 500 banknotes.

- B: With debit/credit card (Dankort, Visa, MasterCard, Diners Club and JCB) via BRK's website on the buyer's personal page.
- C: By bank transfer into BRK's account with Danske Bank: 4183 4310970638 - Swift/BIC: DABADKKK - IBAN: DK4130004310970638.

10 VAT EXEMPTION, PAYMENT & DEPOSIT

- 10.1 Some buyers can choose which type of VAT should apply to the transaction. The choice has to be communicated to BRK no later than two working days after the purchase and cannot be changed subsequently.
- A: Businesses in Denmark registered for VAT can decide that the transaction is to be conducted in accordance with the rules for full VAT, see paragraph 7.1.3.
- B: Businesses registered for VAT in another EU Member State can be exempted from paying Danish VAT if it can be proved that the item has been transported to the foreign address that the buyer has registered with BRK and which is written on the invoice. In such cases, the VAT should be settled according to the rules applicable in the country where the buyer is registered for VAT. It is advisable to consult with the local authorities. The buyer can decide not to be exempt from regular VAT and instead pay Danish VAT on second-hand goods/full VAT.
- C: Buyers residing outside the EU can be exempted from Danish VAT if it can be proved that the item has been transported out of the EU. To the extent possible and for a fee, BRK can issue the necessary export documents for the customs authorities. The buyer may decide not to be exempt from regular VAT and instead pay Danish VAT on second-hand goods/full VAT.
- 10.2 Companies registered for VAT in another EU Member State and buyers residing outside the EU must deposit the Danish VAT on the amount invoiced with BRK until the export process has been completed in a documented, lawful fashion. If the export is undertaken by one of BRK's authorized forwarding agents, the VAT does not have to be deposited. See the list of authorized forwarding agents on bruun-rasmussen.dk.

11 OVERDUE PAYMENTS

- 11.1 If payment is made after a deadline, including the deadline specified in paragraph 8, interest on overdue payments will be charged and estimated in accordance with the Danish Central Bank's official lending rate + 8% per year on the amount due.
- 11.2 If the purchase price, including interest, has still not been paid ten days after the demand for payment has been made, BRK is entitled to seek the purchase price paid by making a set-off against the deposit/by drawing on the bank guarantee or to cancel the purchase.
- 11.3 If the purchase is cancelled, BRK is entitled to sell the item at a new auction and demand the costs and any difference between the new and the earlier hammer price (including the buyer's premium) covered by the defaulting buyer.
- 11.4 In addition to debt collection, BRK may seek recovery of all due claims (including costs) not paid in a timely manner in the following ways:
- A: Making the buyer cover the costs of selling items consigned to auction by or on behalf of the buyer. The sale can be conducted without regard to an agreed reserve price. Items consigned for auction cannot be collected as long as overdue debts are unpaid.
- B: Seizing the buyer's remaining balance with BRK, including the balance from the sale of items consigned by or on behalf of the buyer, regardless of whether such receivables derive from auction sales prior to or after the date of the buyer's default on the payment.

12 PICK-UP & COLLECTION

- 12.1 The title to a purchased item passes to the buyer when the full purchase price, including any interest and fees, has been paid, and only then can the collection of an item take place.
- 12.2 In connection with the collection of a purchased item, BRK reserves the right to demand satisfactory documentation that the person who wants to pick up the item is either the buyer himself/herself or authorized by the buyer to receive the item on his/her behalf.
- 12.3 The collection of certain weapons requires presentation of a valid weapons certificate. Items with such requirements are listed with the text: "The purchase of this item requires the presentation of a valid weapons certificate" in the catalogue and on bruun-rasmussen.dk.
- 12.4 Purchased items are stored after the auction at the buyer's expense and risk. Pick-up must take place no later than eight working days after the last auction day.
- 12.5 If the item(s) is/are not picked up on time, the purchased items will be transported to a warehouse at the buyer's risk and expense. The transport costs are DKK 150 including VAT per item and the storage costs are DKK 150 including VAT per item for each week or part of a week. If an item is left unclaimed for an amount of time that results in the storage costs exceeding the value of the item, BRK will be entitled to, at the buyer's expense and risk and without regard to the reserve price, sell the item at an auction or privately. The buyer is still liable for the costs of transportation and storage not covered by such sale.
- 12.6 In accordance with current anti-money laundering laws, the buyer must in certain cases submit personal information and present a photo ID to BRK before the buyer can have the purchased item placed in his possession.

13 SHIPPING

- 13.1 If the buyer is unable to pick up the purchased item, BRK offers to pack and arrange delivery either by mail or by freight forwarder at the buyer's risk and expense. See paragraph 12.2 regarding identification.

14 EXPORT LICENSE

- 14.1 To ensure that Danish cultural heritage of vital importance remains in Denmark, the Danish Cultural Assets Commission can place an export ban on certain items. If the buyer wishes to export an item that is subject to an export ban in Denmark, the purchase will be cancelled and the Danish Cultural Assets Commission is obliged to acquire ownership of the item for the price obtained at auction. The buyer cannot raise any claims against BRK as a result of an export ban.
- 14.2 Certain items are included in the Washington Convention, also known as CITES. The purpose of CITES is to stop the trade of items made with endangered species and flora. If the item is included in the Washington Convention, CITES, Appendix 1, this will appear in the description of the item on bruun-rasmussen.dk and be marked with the symbol "☉" in the catalogue. The following rules are applicable:
- A: Items that are included in the Washington Convention, CITES, Appendix 1, can only be traded when a dispensation in the form of a CITES certificate has been obtained. BRK obtains the required certificate from the Danish Nature Agency that allows trade and export to countries within the EU. Items that were produced before 1947 can, however, be freely traded within the EU without a certificate.
- B: It is only items included in the Washington Convention, CITES, Appendix 1 that are marked individually on bruun-rasmussen.dk and in our catalogue. Items included in the Washington Convention, CITES, Appendix 2, which can be freely sold and transported within the EU, are not individually marked.
- C: Export to countries outside the EU must, regardless of the year of the item's production, always procure a CITES re-export permit from the Danish Nature Agency if the item is included in the Washington Convention, Appendix 1 and 2. This export permit can usually be

obtained without problems, if the item is either sold with a CITES certificate or was made prior to 1947. Appendix 2 items usually also receive a re-export permit without problems. Any fees charged by the Danish authorities in connection with the issuance of a re-export permit will be added to the buyer's invoice.

D: In connection with export to other countries outside the EU, special rules may apply concerning the subsequent import, and the buyer is encouraged to consult the relevant local authorities about this issue.

15 DEFECTS IN THE PURCHASED ITEMS

- 15.1 The lack of conformity rules of the Danish Sale of Goods Act may apply. Below is a non-exhaustive excerpt of the buyer's remedies in regard to lack of conformity.
- 15.2 The buyer is entitled to cancel a purchase if the description contained significant errors that have led to a higher hammer price than a correct description would have resulted in. In such cases, the total purchase price will be refunded. The buyer cannot demand payment of interest on the purchase price or demand payment of any other expenses or losses.
- 15.3 A purchase cannot be cancelled and the buyer cannot demand a refund of the purchase price or raise any other claims against BRK if the description of the item is in compliance with paragraph 15.2. The same applies if evidence of forgery has required the use of scientific methods that were either not available at the time of sale, were excessively costly to use or led to the damage of the item in question.
- 15.4 Claims for a cancellation of a purchase must be notified to BRK when the buyer has discovered the fact that entitles the buyer to cancel the purchase. This notice, however, has to be given no later than two years after the final pick-up date according to paragraph 12.4. The item purchased must be returned to BRK in the same condition as it was on the day it was sold at auction. If these conditions are not met, the buyer loses the right to cancel the purchase and cannot claim a refund of the purchase price. The buyer is responsible for paying the costs associated with the return of the item.

16 OBJECTIONS & LIMITATIONS OF LIABILITY

- 16.1 BRK is aware that errors, technical difficulties and external abuse or disruptive influences may occur during the auction. Bidders cannot raise any claims against BRK as a result of such events.
- 16.2 The buyer is always responsible for the correct payment of VAT and other costs, fees etc. in accordance with Danish and foreign regulations.
- 16.3 Unless otherwise stated in these conditions of purchase, BRK may never be held liable for bidders'/buyers' operating loss, loss of profits, other indirect losses or consequential loss.

17 PRIVACY POLICY

- 17.1 It is important to BRK to ensure confidentiality and security regarding the bidder's/buyer's personal information. The privacy policy can be found on bruun-rasmussen.dk.

18 COMPLAINTS, DISPUTE RESOLUTION AND APPLICABLE LAW

- 18.1 BRK can always be contacted if the bidder/buyer has a complaint.
- 18.2 If the dispute cannot be resolved, the consumer can submit a complaint to the Complaint Resolution Centre, Nævnenes Hus, Toldboden 2, 8800 Viborg, Denmark, email: naevneshus.dk. Consumers residing in another EU country than Denmark can submit their complaint to the European Commission's Online Dispute Resolution platform via the website: <http://ec.europa.eu/odr>.
- 18.3 In Denmark, disputes must be brought before the City Court of Copenhagen, but see paragraphs 18.2. The mandatory rules on jurisdiction apply to consumer interests.

Jesper Bruun Rasmussen, Auctioneer

The above is an English translation of the Danish version of the Conditions of Purchase. In case of a dispute, only the Danish version of the present Conditions of Purchase of Bruun Rasmussen is valid.

ADDRESSES

BRUUN RASMUSSEN AUCTIONEERS

COPENHAGEN – BREDGADE

BREDGADE 33
DK-1260 COPENHAGEN K
Tel +45 8818 1111
E-mail: info@bruun-rasmussen.dk

COPENHAGEN – SUNDKROGSGADE

SUNDKROGSGADE 30
DK-2150 NORDHAVN
Tel +45 8818 1111
E-mail: info@bruun-rasmussen.dk

GLOSTRUP

PAUL BERGSØES VEJ 20B
DK-2600 GLOSTRUP
Tel +45 8818 1111
E-mail: info@bruun-rasmussen.dk

AARHUS

SØREN FRICHS VEJ 34D
DK-8230 ÅBYHØJ
Tel +45 8818 1100
E-mail: aarhus@bruun-rasmussen.dk

FYN

NICK MESSMANN
Tel +45 8818 1232
E-mail: nic@bruun-rasmussen.dk

ONLINE AUCTIONS – SUPPORT

BRUUN-RASMUSSEN.DK
Tel +45 8818 1114
E-mail: support@bruun-rasmussen.dk

REPRESENTATIVES:

FRANCE & BELGIUM

DITTE HERBORG KROGH · PARIS
Tel +33 6 6185 4564
E-mail: dhk@bruun-rasmussen.dk

SOUTHERN FRANCE & LUXEMBOURG

PETER KOCH
Tel +45 4045 3403
E-mail: p.koch@bruun-rasmussen.dk

GERMANY

NICK MESSMANN
Tel +45 8818 1232
E-mail: nic@bruun-rasmussen.dk

SPAIN

VAGN ERIK KROGSØE
Tel +45 2445 1224
E-mail: vek@bruun-rasmussen.dk

THAILAND

ANDERS NORMANN
Tel +66 818 177 273
E-mail: normann@bruun-rasmussen.dk

USA

SANDRA SEPTIMIUS · NEW YORK
Tel +1 718 764 7601
E-mail: ss@bruun-rasmussen.dk

BENEDICTE HALLOWELL
Tel and Fax +1 617 566 7333
E-mail: b.hallowell@bruun-rasmussen.dk

CONTACT DIRECTLY

KONTAKT DIREKTE

HOVEDNUMMER / MAIN NUMBER

Bruun Rasmussen Auctioneers +45 8818 1111

ADMINISTRATION

Jakob Dupont, CEO +45 8818 1081
dupont@bruun-rasmussen.dk

KUNDESERVICE / CUSTOMER SERVICE

kundeservice@bruun-rasmussen.dk +45 8818 1010
customerservice@bruun-rasmussen.dk +45 8818 1010

KOMMISSIONER / COMMISSIONS

Lise Winther Wobido +45 8818 1013
Anja Bering Hansen +45 8818 1028
bids@bruun-rasmussen.dk

BESTILLING AF KATALOGER / CATALOGUE REQUESTS

Kundeservice / Customer service +45 8818 1111

AUKTIONS RÅDGIVNING / AUCTION GUIDANCE

Franziska Kampmann +45 8818 1026
fka@bruun-rasmussen.dk

SHIPPING

shipping@bruun-rasmussen.dk +45 8818 1055

VURDERING OG INFORMATION / VALUATION AND INFORMATION

INDBOVURDERINGER / VALUATION AT YOUR HOME

David Utzon-Frank +45 8818 1221
duf@bruun-rasmussen.dk

Kasper Nielsen +45 8818 1121
kn@bruun-rasmussen.dk

Hans Ruben +45 8818 1231
hru@bruun-rasmussen.dk

Ralph Lexner +45 8818 1161
rl@bruun-rasmussen.dk

Liselotte Toxværd Møller +45 8818 1234
ltm@bruun-rasmussen.dk

ARMBÅNDSURE / WRISTWATCHES

Vilhelm Islandi Bramsen +45 8818 1239
vib@bruun-rasmussen.dk

BØGER / BOOKS

Emma Marie Poulsen +45 8818 1217
emp@bruun-rasmussen.dk

FRIMÆRKER / STAMPS

Christian Grundtvig +45 8818 1214
cg@bruun-rasmussen.dk

MØNTER / COINS

Michael Fornitz +45 8818 1201
mfo@bruun-rasmussen.dk

MODERNE DESIGN / MODERN DESIGN

Peter Kjølgaard Jensen +45 8818 1191
pkj@bruun-rasmussen.dk

MODERNE KUNST / MODERN ART

Niels Raben +45 8818 1181
nr@bruun-rasmussen.dk

Niels Boe-Hauggaard +45 8818 1182
nbh@bruun-rasmussen.dk

MODERNE SØLV / MODERN SILVER

Amalie Hansen +45 8818 1194
amh@bruun-rasmussen.dk

PORCELÆN, GLAS OG ASIATISK KUNST / CERAMICS, GLASS AND ASIAN ART

Ralph Lexner +45 8818 1161
rl@bruun-rasmussen.dk

Line Hjorth Langkjær +45 8818 1166
lla@bruun-rasmussen.dk

RUSSISK KUNST / RUSSIAN ART

Martin Hans Borg +45 8818 1128
mhb@bruun-rasmussen.dk

SMYKKER / JEWELLERY

Katrin Mikkelsen Sørensen +45 8818 1174
kms@bruun-rasmussen.dk

TÆPPER / CARPETS

Henrik Schleppegrell +45 8818 1145
hsc@bruun-rasmussen.dk

VIN / WINE

Thomas Rosendahl Andersen +45 8818 1206
tra@bruun-rasmussen.dk

VÅBEN / WEAPONS

David Utzon-Frank +45 8818 1221
duf@bruun-rasmussen.dk

ÆLDRE KUNST / FINE ART

Julie Arendse Voss +45 8818 1123
jav@bruun-rasmussen.dk

Birte Stokholm +45 8818 1122
bst@bruun-rasmussen.dk

ÆLDRE MØBLER / FURNITURE

Anders Fredsted +45 8818 1142
afr@bruun-rasmussen.dk

Henrik Schleppegrell +45 8818 1145
hsc@bruun-rasmussen.dk

ÆLDRE SØLV / SILVER

Heidi Schophuus Jensen +45 8818 1163
hsj@bruun-rasmussen.dk

COMMISSION BIDS

KOMMISSIONSBUD

It is possible to leave commission bids if you can not be present at the auction yourself. This service is free of charge.

When leaving a commission bid, you are instructing our customer service to bid up to a specified amount on your behalf.

The situation can occur that another buyer has already bid the same as you were prepared to. Are you then willing to bid further? If not the lot will be sold to another buyer.

If you do not wish to exceed your bid then write "Max", for maximum, next to the amount. You can also allow us to raise your bid by approx. 15% or approx. 25%.

The hammer price may be higher or lower than the estimated price, so it is possible to buy below the estimate. Bruun Rasmussen will always buy at the lowest price possible, as if you yourself had been present at the auction.

All commission bids are strictly confidential.

Commission bids must be submitted no later than **24 hours** prior to the start of the auction.

HOW TO MAKE A COMMISSION BID:

Complete the commission form with all pertinent information.

Indicate the lot number.

Indicate the amount you are prepared to bid.

Should this amount be the absolute maximum, please write "Max" in the appropriate column.

You can also allow us to bid by up to approx. 15% or approx. 25% more by indicating so.

Sign the commission form and make sure that Bruun Rasmussen receives it **24 hours** prior to the start of the auction.

If the information should be insufficient, Bruun Rasmussen can abstain from bidding. Bruun Rasmussen can not be held responsible for error in bidding or failure to execute bids.

INTERNET:

Commission bids can be submitted via website bruun-rasmussen.dk directly from the page with the item you want to submit a bid for.

Deadline for submissions of bids via the website is **3 hours** prior to the start of the auction.

Submitted bids are shown under "Your bids" when you are logged in. Please contact technical support on +45 8818 1114 for questions about the registration and submission of bids on the website.

For additional information, please consult "Conditions of Purchase" §1.

TELEPHONE BIDDING:

Should you wish to bid at auction by telephone, please inform Bruun Rasmussen of your name and telephone number, as well as which catalogue numbers you are interested in, no later than **3 hours** prior to the start of the auction. You will then be contacted shortly before the relevant lot comes under the hammer, thereby allowing you to participate without being in the auction room yourself.

For additional information, please consult "Conditions of Purchase" §1.

Det er muligt at afgive kommissionsbud, hvis De ikke selv kan være til stede på auktionens dag. Denne service er gratis.

Når De afgiver en kommission, beder De vores kundeservice på Deres vegne byde op til et af Dem bestemt beløb i hammerslag.

Der kan opstå den situation, at en anden køber allerede har budt det beløb, som De ønsker at afgive. Er De da villig til at gå et bud højere eller er De indforstået med at nummeret sælges til anden side?

Ønsker De ikke at byde højere så skriv "Max" ud for beløbet. Er De i tvivl om hvor højt De vil byde, kan De hæve budet med op til ca. 15% eller ca. 25%.

Salgsprisen kan blive højere eller lavere end vurderingen, så der er også mulighed for at købe til under den angivne vurdering. Vor kundeservice køber altid så billigt som muligt til Dem, som havde De selv været tilstede på auktionen.

Alle kommissioner behandles strengt fortroligt.

Kommissionsbud skal være Bruun Rasmussen i hænde senest **24 timer** før auktionens start.

SÅDAN BYDER DE:

Udfyld blanketten kommissionsbud med alle oplysninger.

Angiv katalognummer.

Angiv beløbet De ønsker at byde.

Er dette Deres absolutte maximum bedes De anføre "Max" i kolonnen.

De kan også forhøje Deres bud med henholdsvis ca. 15% eller ca. 25%, ved at indikere dette i kolonnen.

De bedes underskrive kommissionsblanketten og sikre Dem, at Bruun Rasmussen modtager den senest **24 timer** før auktionens start.

Hvis Deres oplysninger ikke er tilstrækkelige, kan Bruun Rasmussen undlade at byde for Dem, ligesom Bruun Rasmussen ikke kan gøres ansvarlig for fejl ved budgivningen.

INTERNET:

Kommissionsbud kan afgives på hjemmesiden bruun-rasmussen.dk direkte fra siden med den effekt, De ønsker at byde på.

Seneste afgivelse af bud via hjemmesiden er **3 timer** før auktionens start.

Afgivne bud kan ses på hjemmesiden under "Deres bud", når de er logget ind. Kontakt teknisk support på 8818 1114 for spørgsmål om registrering og budgivning via internettet.

For yderligere information, se "Købskonditioner", §1.

TELEFONBUD:

Såfremt De ønsker at byde pr. telefon, bedes De oplyse Bruun Rasmussen Deres navn og telefonnummer samt hvilke katalognumre, De ønsker at byde på, senest **3 timer** før auktionens start. De vil så blive ringet op kort før, den aktuelle vare kommer under hammeren, og De kan på denne måde deltage i auktionen uden selv at være til stede.

For yderligere information, se "Købskonditioner" på bruun-rasmussen.dk under "Guide".

COMMISSION BIDS

KOMMISSIONSBUD

BREDGADE

Skal være Bruun Rasmussen i hænde senest **24 timer** før auktionens start.
Must be submitted no later than 24 hours prior to the start of the auction.

AUKTION NR AUKTION NO: **911**

Navn Name: *

Adresse Address: *

Postnr./by City: *

Land Country: * Fax:

Tel: *

e-mail: CVR-nr. VAT No.:

Bank: Konto nr. Acct. No.:

Adresse Address:

Postnr./By City: Land Country:

Tel: Kontaktperson Contact:

Obligatoriske felter er mærket med en stjerne * *Mandatory fields are marked with an asterisk **

Undertegnede giver hermed fuldmagt til Bruun Rasmussen Kunstauktioner A/S om på mine vegne at købe nedennævnte katalognumre så fordelagtigt som muligt, inden for det af mig anførte beløb, i hammerslag.
I hereby request that Bruun Rasmussen bid on my behalf on the following lots up at the prices indicated below.

Undertegnede har udfyldt ovennævnte med de ønskede oplysninger, samt har accepteret købskonditionerne.
The undersigned has supplied the required information and agrees to be bound by the conditions of purchase.

Signatur: * B.R. kunde-nr. Client No.:

Jeg ønsker at modtage salgsresultater på de emner jeg har budt på via email dagligt efter auktion
I wish to receive sales results on the items I have been bidding on via e-mail every day after the auction

på e-mail adressen *on this e-mail address:*

Katalog nr. Lot. No.	Beskrivelse Description	Bud kr. Bid DKK	Max	+15%	+25%

BRUUN RASMUSSEN KUNSTAUKTIONER A/S

Bredgade 33 · DK-1260 København K · Tel +45 8818 1111 · Fax +45 8818 1112 · bids@bruun-rasmussen.dk · bruun-rasmussen.dk

Fortsættes næste side *Please turn over*



Katalog nr. Lot. No.	Beskrivelse Description	Bud kr. Bid DKK	Max	+15%	+25%

Ret til ændringer forbeholdes © 2022 Bruun Rasmussen Kunstauktioner
 Foto: Bent Lange, Henrik Wichmann & Peter Madsen - Tryk: Cool Gray
 Grafik og dtp: Jorge Figueiredo & Bettina Stefansen

AUKTION NR AUCTION NO: **911**

Bruun Rasmussen

– bid from wherever you are!

Experience the atmosphere of the saleroom

If you are unable to attend the Live Auctions in person, you can follow an auction in progress and experience the atmosphere in the saleroom via live streaming – just as if you were there.

Bid via Bruun Rasmussen Live

Shortly before the auction begins, you will be able to see the orange “Live” icon next to the auction in question at bruun-rasmussen.dk. Click on the icon to follow the auctioneer during the auction.

If you wish to submit a bid, simply log in prior to the auction.

The bidding process

Your bid will be treated in the same way as the bids submitted by those present in the room. If your bid is successful, you will be required to pay the standard costs which apply to all purchases from Bruun Rasmussen according to the conditions of purchase. Bruun Rasmussen accepts no liability for bids lost as a result of technical problems.

Technical assistance

If you require technical assistance, please contact our IT support team on tel. +45 8818 1114 or e-mail: support@bruun-rasmussen.dk

Please note that we are also on hand during the auctions to deal with any technical issues.



 ANTIQUES

