

MODERN ART
+ WATCHES



BRUUN RASMUSSEN

AUCTIONEERS

of art 24

MODERNE KUNST + ARMBÅNDSURE

Traditionel Auktion 905



AUKTION

7. - 8. december 2021

EFTERSYN

Torsdag	25. november	kl. 15 - 18
Fredag	26. november	kl. 11 - 17
Lørdag	27. november	kl. 11 - 16
Søndag	28. november	kl. 11 - 16
Mandag	29. november	kl. 11 - 17

eller efter aftale

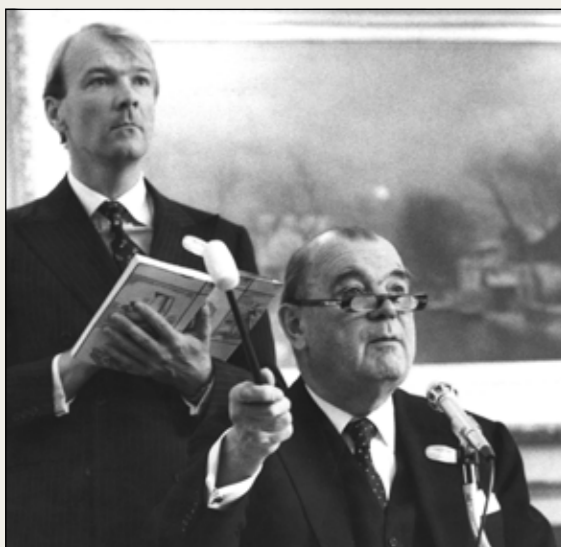
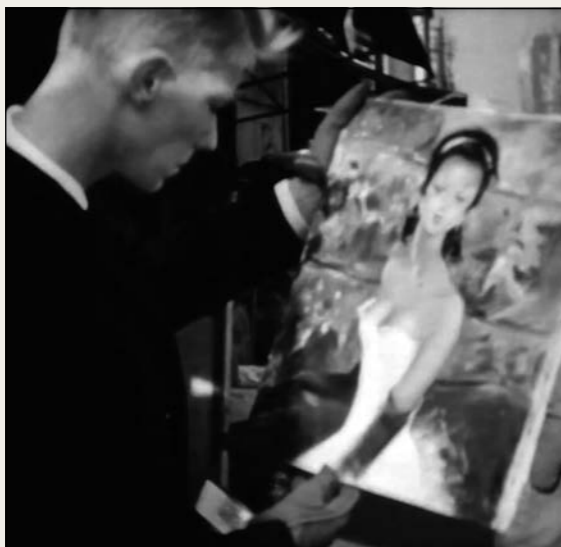


BRUUN RASMUSSEN

KUNSTAUKTIONER

Bredgade 33 · 1260 København K · Tlf. +45 8818 1111
info@bruun-rasmussen.dk · bruun-rasmussen.dk





Invitation

Jesper Bruun Rasmussens 60-års jubilæum

Torsdag den 25. november kl. 15-18

I seks årtier har Jesper Bruun Rasmussen været i kunstens tjeneste som en del af auktionshuset.

Det vil vi gerne fejre og inviterer til en festlig eftermiddag i Bredgade 33, København, på eftersynets åbningsdag.

Vi byder på kunst, champagne og musikalsk underholdning af pianist Giordano Léon Makhholm og bassist Rune Fog-Nielsen.

Der er rig mulighed for at hilse på jubilaren.

På glædeligt gensyn!

Invitation

Jesper Bruun Rasmussen's 60th Jubilee

Thursday 25 November from 3 to 6 pm

Jesper Bruun Rasmussen has been a part of the auction house and in the service of art for six decades.

We would like to celebrate the anniversary and invite you to a festive afternoon on the opening day of the preview at Bredgade 33, Copenhagen.

You can view art, taste Champagne and listen to music by pianist Giordano Léon Makhholm and bassist Rune Fog-Nielsen.

There will be ample opportunity to congratulate the jubilarian.

We hope to see you!



AUKTIONSKALENDER

MALERIER OG ANTIKVITETER

Tirsdag	30. november		
	kl. 16	Malerier og tegninger	1 - 153
Onsdag	1. december		
	kl. 14	Asiatisk kunst	200 - 264
		Islamisk og indisk kunst	265 - 287
	kl. 16	Møbler, ure, bronzer, Flora Danica, tæpper og sølv	288 - 381
Torsdag	2. december		
	kl. 15	Russisk kunst og antikviteter	382 - 418
	kl. 16	Smykker og tasker	419 - 633

MODERNE KUNST OG DESIGN

Tirsdag	7. december		
	kl. 16	Malerier og skulpturer	634 - 748
Onsdag	8. december		
	kl. 16	Malerier og skulpturer	749 - 831
		Grafik	832 - 886
	kl. 19	Armbåndsure	887 - 934
Torsdag	9. december		
	kl. 16	Sølv og keramik	935 - 985
		Møbler, belysning og tæpper	986 - 1145

SIDSTE FRIST FOR AFHENTNING: TIRSDAG DEN 21. DECEMBER

Genstande købt på denne auktion skal være betalt senest otte dage efter fakturadatoen og afhentet i Bredgade 33 senest tirsdag den 21. december. I modsat fald bliver de transporteret til Bruun Rasmussens lager på Paul Bergsøes Vej 16 i Glostrup for købers regning og risiko, hvor de kan afhentes fra torsdag den 23. december. Transporten koster 150 kr. pr. genstand inkl. moms, og opbevaringen koster 150 kr. pr. genstand pr. påbegyndt uge inkl. moms.



Lot 673

Mondrian

MODERN ART + WATCHES

Live Auction 905



AUCTION

7 - 8 December 2021

PREVIEW

Thursday	25 November	3 pm - 6 pm
Friday	26 November	11 am - 5 pm
Saturday	27 November	11 am - 4 pm
Sunday	28 November	11 am - 4 pm
Monday	29 November	11 am - 5 pm

or by appointment



BRUUN RASMUSSEN

AUCTIONEERS

Bredgade 33 · DK-1260 Copenhagen K · Tel +45 8818 1111
info@bruun-rasmussen.dk · bruun-rasmussen.com



DAYS OF SALE

FINE ART AND ANTIQUES

Tuesday	30 November		
	4 pm	Paintings and drawings	1 - 153
Wednesday	1 December		
	2 pm	Asian art	200 - 264
		Islamic and Indian art	265 - 287
	4 pm	Furniture, clocks, bronzes, Flora Danica, carpets and silver	288 - 381
Thursday	2 December		
	3 pm	Russian art and antiques	382 - 418
	4 pm	Jewellery and handbags	419 - 633

MODERN ART AND DESIGN

Tuesday	7 December		
	4 pm	Paintings and sculptures	634 - 748
Wednesday	8 December		
	4 pm	Paintings and sculptures	749 - 831
		Prints	832 - 886
	7 pm	Wristwatches	887 - 934
Thursday	9 December		
	4 pm	Silver and ceramics	935 - 985
		Furniture, lamps and carpets	986 - 1145

DEADLINE FOR CLAIMING ITEMS: TUESDAY 21 DECEMBER

Items bought at this auction must be paid no later than eight days from the date of the invoice and claimed at Bredgade 33 by Tuesday 21 December at the latest. Otherwise, they will be moved to Bruun Rasmussen's storage facility at Paul Bergsøes Vej 16 in Glostrup at the buyer's expense and risk. Here they can be picked up from Thursday 23 December. This transportation will cost DKK 150 per item VAT included, and storage will cost DKK 150 per item per week VAT included.

Kunstens kvinder, Heerups hyldest og franske fristelser

Gennem året har vi i lighed med danske og internationale museer kastet lys over en række kvindelige kunstnere fra 1800-tallet og frem til samtiden. Vi bevarer denne gang fokus med samtidskunstneren Anette Harboe Flensburg, hvis fem værker maner til eftertanke og bedst lader sig betegne som rumlige vildfarelser. Hun fører os ind i forunderlige og mennesketomme rum, hvor der altid er udsyn til et tilstødende lokale eller naturen gennem et vindue. Lader man blikket hvile et øjeblik, bliver det klart, at der ikke er tale om en 1:1-gengivelse af virkeligheden, og rummene antager pludselig form af nærmest kubistiske stillebener. Som beskuer søger man instinktivt efter en udgang i billedrummet, men klaustrofobien breder sig, for der er ingen vej ud, og man hvirvles ind i sin egen søgen efter mening. Med manglen på rationel logik farer man let vild, og hendes værker bliver således et billede på vores indre psykologiske rum og debatterer den måde, vi som mennesker opfatter virkeligheden på (f.eks. kat.nr. 705, 712 og 706).

Tiden spoles længere tilbage med en gipsskulptur af den kompromisløse Sonja Ferlov Mancoba, der de seneste år har opnået en velfortjent plads i kunsthistorien som et af dansk modernismes hovednavne. I sine skulpturer skabte hun mærkelige væsener, krigeriske figurer og afrikansk-inspirerede masker og tog gennem sin kunst afstand fra tidens, efter hendes opfattelse, materialisme og egoisme. Hun kæmpede for fællesskabet og samhørigheden, for som hun så smukt udtrykte det: "Kun i kraft af hinanden kan vi leve og ånde ...". Mancobas skulptur har været ejet af Troels Andersen, der er tidligere direktør på Museum Jorn i Silkeborg. Som man netop nu kan opleve på dette museum i udstillingen "COBRA – de kvindelige kunstnere" var en anden stærk repræsentant for kunstgruppen Else Alfelt, der med sin kunst ville bidrage til heling af mennesket oven på verdenskrigene. Hun står bag to sanselige møder med naturen i form af bjerg- og klippelandskaber fra 1940'erne skabt af de karakteristiske takkede og bølgede former. De mandlige cobramalere står dog ikke i skyggen på auktionen – anført af værker af de omtalte kvinders mænd, Carl-Henning Pedersen og Ernest Mancoba, og ikke mindst kollegaen og gruppens provokerende frontfigur Asger Jorn med det eminente værk "Forskellige grunde" fra 1971, der også stammer fra Troels Andersens samling (f.eks. kat.nr. 665, 667 og 685).

Lad os dvæle lidt længere ved Cobra – Henry Heerup står som den helt store humanist i dansk kunst og satte i sine folkekære værker store eksistentielle spørgsmål under lup. Hans frie og symbolmættede billedsprog folder sig ud i det livsbekræftende monumentalværk "Koncerten" fra 1953, hvor vi møder kunstneren fra hans allerbedste side. Med det vanlige legesyge og finurlige glimt i øjet ophøjes den musiske udfoldelse sammen med den frodige og nøgne moderfigur. Scenariet bindes sammen af livshjulet, der ses som en glorie af rødkindede babyer omkring kvinden og står som et symbol på livets universelle helhed, tiden og altings bevægelse. Det festlige værk er en malerisk ode til frugtbarheden og livet med alt, hvad det rummer af både glæder og sorger – og på ægte "heerupsk" vis indtager nissen med den røde hue et midtpunkt, mens instrumenter og musikere tager form som fallos- og fosterlignende symboler (kat.nr. 670).

De abstrakte modernister fra efterkrigstidens Frankrig er faste gæster på vores auktioner. Denne gang gælder det f.eks. André Marfaing, der i mødet mellem de mørke farver og lyset skaber en dramatisk spænding på de udbudte lærreder. De står i kontrast til Maurice Estèves harmoniske og farverige kompositioner og i lige så høj grad til kunstneren Olivier Debré, der lader sine tilsvarende stærke farver illustrere oplevelser med naturfænomener. Han står som repræsentant for den såkaldte "lyriske abstraktion" lige som mesteren over dem alle, Pierre Soulages, hvis ærinde er at forvandle mørke farver ved hjælp af lyset for at fremmane mentale landskaber, som man måske fornemmer i de fire udbudte grafiske værker på auktionen. Soulages' relation til Danmark var stærk i kraft af adskillige udstillinger i København i efterkrigsårene, hvilket gjorde sig gældende for flere af de franske kunstnere. Auktionens værker sætter således streg under den stærke forbindelse mellem dansk og fransk kunsthistorie i midten af 1900-tallet (f.eks. kat.nr. 719, 725 og 835).



Lot 916

På katalogets sidste sider finder man auktionens udvalg af armbåndsure, og her kan man blive klogere på den sorte nattehimmels stjernebilleder med det sjældne og kostbare astronomiske ur "Celestial" fra Patek Philippe, som vi aldrig tidligere har solgt på auktion. Andre højdepunkter tæller tre eksemplarer af Audemars Piguet's avantgardistiske klassiker "Royal Oak", der næste år kan fejre sit 50-års jubilæum. I den mere kuriøse ende af spektret ses Rolex' "Cellini" – en ekstravagant guldmønt, som i 1980'erne blev købt af den legendariske rejsekonge Simon Spies og givet i gave til medstifteren af Spies Rejser, Karl Olsen (kat.nr. 916, 928 og 913). Vær opmærksom på, at armbåndsurene fremover vil være at finde i auktionskataloget for moderne kunst.

Niels Raben og Jesper Bruun Rasmussen

Female Artists, Heerup's Affirmation and French Allure

Throughout the year, like a several Danish and international museums, we have shed light on a number of female artists from the 19th century to the present day. We continue this focus with the contemporary artist Anette Harboe Flensburg, whose five works create food for thought and are best described as spatial misdirections. She leads us into marvellous and derelict spaces, where there is always a view of an adjoining room or nature through a window. If you let your gaze rest for a moment, it becomes clear that this is not a direct representation of reality, and the spaces suddenly take the form of almost cubist still lifes. As a spectator, you instinctively search for an exit in the picture plane, but the claustrophobia spreads as you realize there is no way out, and you are whirled into your own search for meaning. With the lack of rational logic, one easily gets lost, and her artwork thus becomes an image of our inner psychological space and a comment on the way we as humans perceive reality (e.g. cat. no. 705, 712 and 706).

We go back in time with a plaster sculpture by the uncompromising Sonja Ferlov Mancoba, who in recent years has achieved a well-deserved place in art history as one of the central names of Danish modernism. With her sculptures, she created strange creatures, warlike figures and African-inspired masks, and through her art, she distanced herself from what she saw as materialism and selfishness in the surrounding society. Instead, she fought for community and cohesion, because as she so beautifully put it: "Only by virtue of each other can we live and breathe...". Mancoba's sculpture has been owned by Troels Andersen, the former director of Museum Jorn in Silkeborg. At this museum, you can right now view the exhibition "COBRA – The Women Artists" where another strong representative of the art group, Else Alfelt, is also part of our auction. She wanted to contribute to the healing of mankind after the world wars, and she has made two sensuous encounters with nature in the form of mountain and rock landscapes from the 1940s with the characteristically jagged and undulating shapes. The male Cobra painters are not holding back at this auction either – led by works from the husbands of the two women mentioned above, Carl-Henning Pedersen and Ernest Mancoba, and not least the group's provocative frontman Asger Jorn with his eminent work "Forskellige grunde" (On Different Grounds) from 1971, which also comes from Troels Andersen's collection (e.g. cat. no. 665, 667 and 685).

Let's dwell a little longer on Cobra – Henry Heerup can be considered the great humanist in Danish art and puts existential questions under the microscope in his popular works. His free and symbol-saturated imagery unfolds in the life-affirming monumental work "Koncerten" (The Concert) from 1953, where we see the artist from his very best side. The musical motif is elevated together with the lush and naked mother figure by the artist's usual playful and whimsical eye for details. The scene is tied together by the wheel of life, which is seen as a halo of rosy-cheeked babies around a woman and stands as a symbol of the universal wholeness of life and the continual progression of time and existence. The festive work is a picturesque ode to fertility and life with all that it contains of both joys and sorrows – and in true "Heerupian" fashion, a Christmas elf with a red hat occupies the centre of the painting, while instruments and musicians take the form of phallus- and fetus-like symbols (cat. no. 670).

The abstract modernists from post-war France are regular guests at our auctions. This time we can include names like André Marfaing, who in the meeting between dark and light colours creates a dramatic tension on the offered canvases. They represent a clear contrast to both Maurice Estève's harmonious and colourful compositions as well as the paintings of the artist Olivier Debré, who lets his equally strong colours illustrate experiences with natural phenomena. He is a representative of the so-called "lyrical abstraction" just like the master of this genre, Pierre Soulages, whose mission it is to transform dark colours using light to evoke mental landscapes, which one can also sense in the four prints offered at the auction. During the post-war years several exhibitions in Copenhagen with Soulages' work created a strong relationship with Denmark, which is also true for several of the other French artists. This group of artworks thus underlines the strong connection between the Danish and French art scenes in the middle of the 20th century (e.g. cat. no. 719, 725 and 835).



Lot 835

On the last pages of this catalogue, you will find the auction's selection of wristwatches, and here you can learn more about the constellations of the night sky with the rare and precious astronomical watch "Celestial" from Patek Philippe, which we have never sold at auction before. Other highlights include three examples of Audemars Piguet's avant-garde classic "Royal Oak", which can celebrate its 50th anniversary next year. As a more peculiar entry in the category, we find the Rolex "Cellini" – an extravagant gold model, which in the 1980s was purchased by the Danish travel tycoon Simon Spies and given as a gift to the co-founder of the charter airline Spies Rejser, Karl Olsen (cat. no. 916, 928 and 913). Please note that from now on the wristwatches can be found in the catalogue for modern art.

Niels Raben and Jesper Bruun Rasmussen

SPECIALISTS IN MODERN ART



Head of department
Niels Raben
+45 8818 1181
nr@bruun-rasmussen.dk



Paintings, sculptures and prints
Niklas Langeland Pedersen
+45 8818 1196
nlp@bruun-rasmussen.dk



Paintings, sculptures and prints
Niels Boe-Hauggaard
+45 8818 1182
nbh@bruun-rasmussen.dk



Paintings, sculptures and prints
Emma Bjørlow Møller
+45 8818 1092
ebm@bruun-rasmussen.dk



Paintings, sculptures and prints
Kathrine Eriksen
+45 8818 1184
ke@bruun-rasmussen.dk



Paintings and design
Peter Beck – Aarhus
+45 8818 1186
pb@bruun-rasmussen.dk



Wristwatches
Vilhelm Islandi Bramsen
+45 8818 1239
vib@bruun-rasmussen.dk



Wristwatches
Frederik Plum
+45 8818 1168
fp@bruun-rasmussen.dk



Director of sales
Kasper Nielsen
+45 8818 1121
kn@bruun-rasmussen.dk



Representative France + Belgium
Ditte Herborg Krogh
+33 6 6185 4564
dhk@bruun-rasmussen.dk



International relations
Frederik Bruun Rasmussen
+45 8818 1003
fbr@bruun-rasmussen.dk



Representative United Kingdom
Anna Grundberg
+44 7976 554 439
agr@bruun-rasmussen.dk



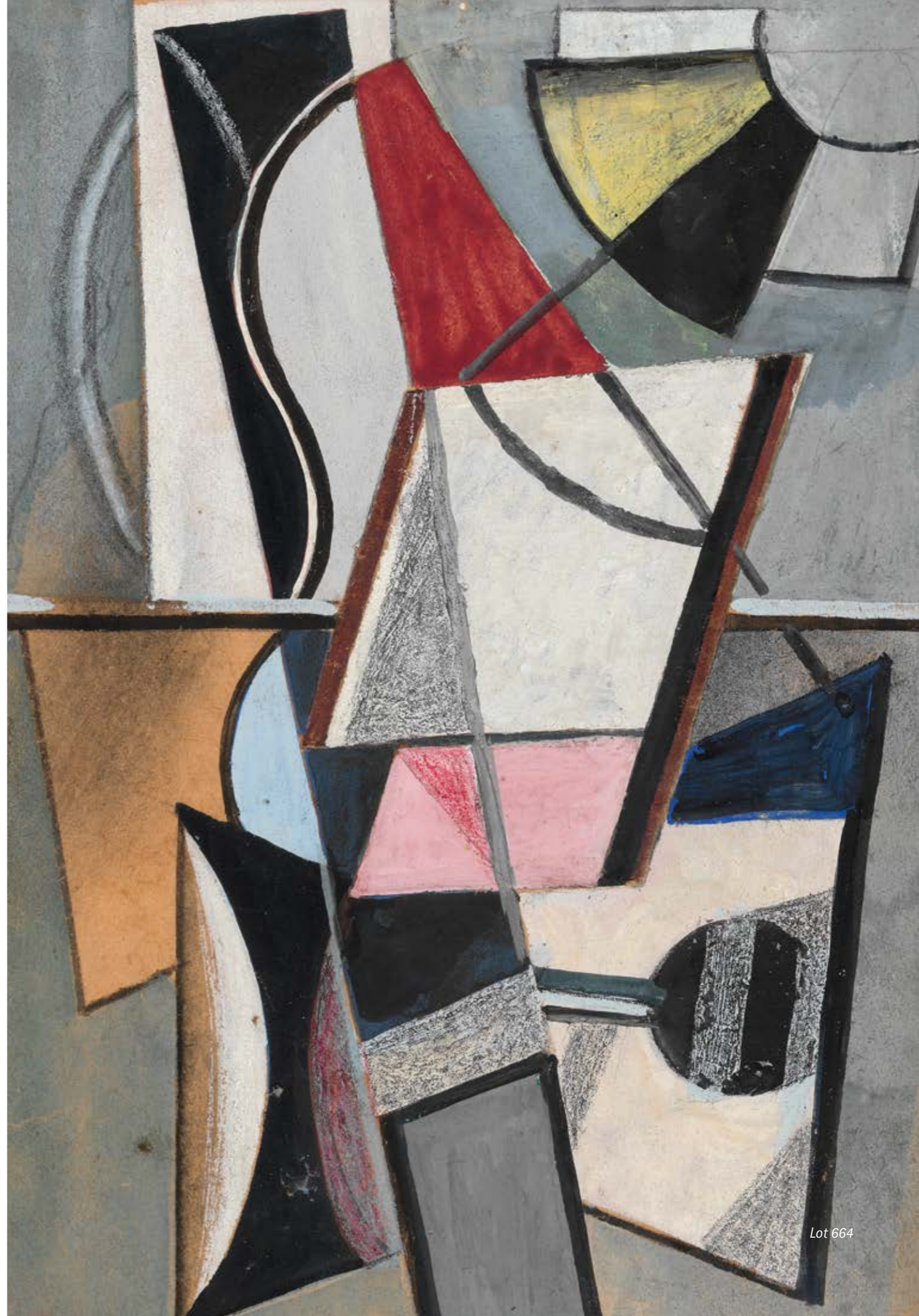
Silver and branding
Alexa Bruun Rasmussen
+45 8818 1091
alexa@bruun-rasmussen.dk



Representative USA
Sandra Septimius
+1 718 764 7601
ss@bruun-rasmussen.dk



Shipping
Tina Bavnbek Jepsen
+45 8818 1056
tbj@bruun-rasmussen.dk



DISCLAIMER

All wristwatches up for auction were in working condition at the time of their consignment and inspection, but they have not been tested over a longer period of time.

Since the wristwatches are in a used condition, no warranty is provided for their functionality or of the originality of any replaced parts in the wristwatches, such as the dial, hands, bezel, mechanical parts etc.

If a recent service history does not appear in the description of the individual wristwatch, we recommend the buyer have the watch serviced.

WRISTWATCHES

Wednesday 8 December 7 pm

Lot 887 - 934



Lot 916



887

887

ROLEX

Model: Datejust

Reference: 16013

Movement: Automatic, cal. 3035

Material: 18k gold and steel

Diameter: 36 mm

Strap/Bracelet: 18k gold and steel Rolex "Jubilee" bracelet

Buckle/Clasp: 18k gold and steel Rolex folding clasp

Circumference: app. 17 cm

Year: 1984

Middle case no. 16013

Case back no. 16000

Movement no. 1166581

Serial no. 8415636

End link no. 455

Folding clasp no. 6252H.18

Dial set with numerous single-cut diamonds.

DKK 30,000 / € 4,050

889

ROLEX

Model: Datejust

Reference: 126300

Movement: Automatic, cal. 3235

Material: Steel

Diameter: 41 mm

Strap/Bracelet: Steel Rolex "Jubilee" bracelet

Buckle/Clasp: Steel Rolex folding clasp

Circumference: app. 17.5 cm

Year: 2010s

Middle case no. 126300

Case back no. 2480

Movement no. 043CJ535

Serial no. 37CM7446

Folding clasp no. 2FV

The watch is set with numerous later brilliant-cut diamonds.

DKK 50,000-60,000 / € 6,700-8,050



889



888

888

ROLEX

Model: Oyster Perpetual

Reference: 114300

Movement: Automatic, cal. 3132

Material: Steel

Diameter: 39 mm

Strap/Bracelet: Steel Rolex "Oyster" bracelet

Buckle/Clasp: Steel Rolex folding clasp

Circumference: app. 18 cm

Year: 2018

Middle case no. 114300

Case back no. 2430

Movement no. YD502924

Serial no. K8737177

Accompanied by Rolex box, manual, one additional link, receipt of purchase and certificate from authorized retailer Bucherer 2018.

DKK 40,000-60,000 / € 5,400-8,050



890

OMEGA

Model: Seamaster Aqua Terra

Reference: 231.10.42

Movement: Automatic, cal. 8500

Material: Steel

Diameter: 41.5 mm

Strap/Bracelet: Steel Omega bracelet

Buckle/Clasp: Steel Omega folding clasp

Circumference: app. 19.5 cm

Year: 2010s

DKK 15,000-20,000 / € 2,000-2,700



890



891

891

ROLEX

Model: Datejust

Reference: 69173

Movement: Automatic, cal. 2135

Material: 18k gold and steel

Diameter: 26 mm

Strap/Bracelet: 18k gold and steel Rolex "Jubilee" bracelet

Buckle/Clasp: 18k gold and steel Rolex folding clasp

Circumference: app. 17 cm

Year: 1990

Middle case no. 69173

Case back no. 69000A

Movement no. 1510887

Serial no. E883993

End link no. 468B

Folding clasp no. 62523D

DKK 15,000-20,000 / € 2,000-2,700



892

892

ROLEX

Model: Datejust

Reference: 179313

Movement: Automatic, cal. 2235

Material: 18k gold and steel

Diameter: 31 mm

Strap/Bracelet: 18k gold and steel Rolex "Jubilee" bracelet

Buckle/Clasp: 18k gold and steel Rolex folding clasp

Circumference: app. 16.5 cm

Year: 2005-2006

Middle case no. 179313

Case back no. 2320

Movement no. 1768639

Serial no. D371122

End link no. 63133

Folding clasp no. 63133

The dial is set with numerous single-cut diamonds.

The bezel is set with numerous brilliant-cut diamonds.

DKK 60,000 / € 8,050

893

ROLEX

Model: Datejust

Reference: 69173

Movement: Automatic, cal. 2135

Material: 18k gold and steel

Diameter: 26 mm

Strap/Bracelet: 18k gold and steel Rolex "Jubilee" bracelet

Buckle/Clasp: 18k gold and steel Rolex folding clasp

Circumference: app. 14.5 cm

Year: 1988

Middle case no. 69173

Case back no. 69000A

Movement no. 0952329

Serial no. R531105

End link no. 468B

Folding clasp no. 62523D.18

Accompanied by Rolex box, manual, polishing cloth and undated certificate from authorized retailer J. B. Hudson. Both dial and bezel are set with numerous brilliant-cut diamonds.

DKK 30,000-40,000 / € 4,050-5,400



893



894

894

BREITLING

Model: Wings Lady

Reference: A67350

Movement: Quartz

Material: Steel

Diameter: 31.5 mm

Strap/Bracelet: Steel Breitling bracelet

Buckle/Clasp: Steel Breitling folding clasp

Circumference: app. 16.5 cm

Year: 2000s

Accompanied by red fabric pouch. The bezel is set with numerous brilliant-cut diamonds.

DKK 15,000-20,000 / € 2,000-2,700



895

895
ROLEX
Model: GMT-Master "Dirty Harry"
Reference: 1675
Movement: Automatic, cal. 1570
Material: 18k gold and steel
Diameter: 40 mm
Strap/Bracelet: 14k gold and steel Rolex "Jubilee" bracelet
Buckle/Clasp: 14k gold and steel Rolex folding clasp
Circumference: app. 19 cm
Year: 1971

Middle case no. 1675
Case back no. 1675
Movement no. D851398
Serial no. 2737620
Folding clasp stamped "14k trim U.S.A."
DKK 70,000-80,000 / € 9,400-11,000



897
ROLEX
Model: GMT-Master "Concorde"
Reference: 1675
Movement: Automatic, cal. 1570
Material: 18k gold
Diameter: 40 mm
Strap/Bracelet: 18k gold Rolex "Oyster" bracelet
Buckle/Clasp: 18k gold Rolex folding clasp
Circumference: app. 19 cm
Year: 1968

Middle case no. 1675
Case back no. 1675
Movement no. D109849
Serial no. 1810302
End link no. 80
Folding clasp no. 3 68 *DKK 225,000-250,000 / € 30,500-33,500*



896

896
TUDOR
Model: Submariner "Snowflake"
Reference: 7021
Movement: Automatic, cal. 2484
Material: Steel
Diameter: 40 mm
Strap/Bracelet: Steel Rolex "Oyster" bracelet
Buckle/Clasp: Steel Rolex folding clasp
Circumference: app. 17 cm
Year: 1973

Middle case no. 7021/0
Case back no. IV68
Serial no. 761248
End link no. 380
Bracelet no. 9315 *DKK 60,000 / € 8,050*



897



898

898

L O N G I N E S

Reference: 4915

Movement: Manual, cal. 12.68Z

Material: Steel

Diameter: 37.5 mm

Strap/Bracelet: Steel bracelet

Buckle/Clasp: Steel folding clasp

Circumference: app. 17.5 cm

Year: 1950

Serial no. 7867103

DKK 15,000-20,000 / € 2,000-2,700



899

899

R O L E X

Model: Precision

Reference: 4363

Movement: Manual

Material: Steel

Diameter: 35 mm

Strap/Bracelet: Brown leather strap

Buckle/Clasp: Steel Rolex C-type buckle

Year: 1962

Case back no. 4363

Serial no. 822954

DKK 20,000-25,000 / € 2,700-3,350



900

R O L E X

Reference: 3233

Movement: Manual chronograph

Material: 18k gold

Diameter: 31.5 mm

Strap/Bracelet: Black leather strap

Buckle/Clasp: Gold-plated Rolex C-type buckle

Year: 1938

Serial no. 56741

Accompanied by Rolex box.

DKK 60,000-80,000 / € 8,050-11,000



900



901

901

ROLEX

Model: Pearlmaster

Reference: 81208

Movement: Automatic, cal. 2235

Material: 18k gold

Diameter: 34 mm

Strap/Bracelet: 18k gold Rolex "Pearlmaster" bracelet

Buckle/Clasp: 18k gold Rolex folding clasp

Circumference: app. 15.5 cm

Year: 2008-2009

Middle case no. 81208

Case back no. 2308

Movement no. 2824208

Serial no. V021363

End link no. PJ 72848

Folding clasp no. 72848 PJ10

Accompanied by Rolex box, manual and certificate from authorized retailer Ahmed Seddiqi & Sons 2009. The dial is set with numerous single-cut diamonds.

DKK 100,000-150,000 / € 13,500-20,000



902

ROLEX

Model: Pearlmaster

Reference: 81315

Movement: Automatic, cal. 2235

Material: 18k Everose gold

Diameter: 34 mm

Strap/Bracelet: 18k Everose gold Rolex "Pearlmaster" bracelet

Buckle/Clasp: 18k Everose gold Rolex folding clasp

Circumference: app. 16 cm

Year: 2010s

Middle case no. 81315

Case back no. 2305

Movement no. 015E9641

Serial no. 6U3518E9

Accompanied by Rolex box. Bezel set with 12 brilliant-cut diamonds. Hour marker at 6 o'clock set with numerous single-cut diamonds.

DKK 150,000-200,000 / € 20,000-27,000



902





903

903
OMEGA
Model: Constellation
Reference: 2852/2853 SC
Movement: Automatic, cal. 501
Material: 14k gold
Diameter: 34 mm
Strap/Bracelet: 14k gold Omega bracelet
Buckle/Clasp: 14k gold Omega folding clasp
Circumference: app. 17 cm
Year: 1956

Serial no. 15'115'006
DKK 18,000-20,000 / € 2,400-2,700



904

904
BAUME & MERCIER
Model: Zodiac Moon Phase
Reference: 15201
Movement: Quartz
Material: 18k gold
Diameter: 32 mm
Strap/Bracelet: Brown leather strap
Buckle/Clasp: Gold-plated C-type buckle
Year: 1980s
DKK 20,000 / € 2,700



905

905
PATEK PHILIPPE
Reference: 4217
Movement: Manual, cal. 16-250
Material: 18k gold
Diameter: 20 x 23.5 mm
Strap/Bracelet: 18k gold Patek Philippe bracelet
Buckle/Clasp: 18k gold Patek Philippe folding clasp
Circumference: app. 18 cm
Year: 1980s

Serial no. 2'758'214
Case back inscribed E M S A.W. Nielsen.
DKK 20,000-25,000 / € 2,700-3,350



906

906
AUDEMARS PIGUET
Reference: 6105/002
Movement: Quartz
Material: 18k gold
Diameter: 18 x 26 mm
Strap/Bracelet: 18k gold bracelet
Buckle/Clasp: 18k gold folding clasp
Circumference: app. 17.5 cm
Year: 1980s

Case back no. C-381
Movement no. 381
Serial no. 255718
Accompanied by Audemars Piguet leather pouch and evaluation from Ole Mathiesen 1991. Bezel set with numerous brilliant-cut diamonds.
DKK 20,000-30,000 / € 2,700-4,050



907

907
PATEK PHILIPPE
Reference: 4647/1
Movement: Manual, cal. 16-250
Material: 18k gold
Diameter: 21 mm
Strap/Bracelet: 18k gold Patek Philippe bracelet
Buckle/Clasp: 18k gold Patek Philippe folding clasp
Circumference: app. 16.5 cm
Year: 1996

Serial no. 2'816'976
Accompanied by Patek Philippe service pouch and certificate from authorized retailer Chronométrie Stauble Zermatt 1996. Dial is set with numerous single-cut diamonds.
DKK 35,000-40,000 / € 4,700-5,400



908

908
AUDEMARS PIGUET
 Model: Royal Oak
 Reference: 15400.00.1220ST.03
 Movement: Automatic, cal. 3120
 Material: Steel
 Diameter: 41 mm
 Strap/Bracelet: Steel Audemars Piguet bracelet
 Buckle/Clasp: Steel Audemars Piguet folding clasp
 Circumference: app. 17.5 cm
 Year: 2016

Serial no. 181526.

Accompanied by Audemars Piguet box, manuals, three additional links and certificate from Klarlund 2016.

DKK 250,000-300,000 / € 33,500-40,500

909
PATEK PHILIPPE
 Model: Ellipse
 Reference: 3848
 Movement: Manual, cal. 215
 Material: 18k gold
 Diameter: 27 x 32 mm
 Strap/Bracelet: Black Patek Philippe leather strap
 Buckle/Clasp: 18k gold Patek Philippe C-type buckle
 Year: 1990s *DKK 40,000-60,000 / € 5,400-8,050*



909

910
PATEK PHILIPPE
 Model: Ellipse "TV Screen"
 Reference: 3734-2
 Movement: Automatic, cal. 310SC
 Material: 18k gold
 Diameter: 33 mm
 Strap/Bracelet: 18k gold Patek Philippe bracelet
 Buckle/Clasp: 18k gold Patek Philippe folding clasp
 Circumference: app. 20.5 cm
 Year: 1980s

Case no. 1'440'042. DKK 60,000-80,000 / € 8,050-11,000



910



911

911
OMEGA
 Model: Speedmaster DSOTM
 Reference: 311.92.44.51.01.003
 Movement: Automatic chronograph, cal. 9300
 Material: Black ceramic
 Diameter: 44.25 mm
 Strap/Bracelet: Black Omega fabric strap
 Buckle/Clasp: Black Omega ceramic C-type buckle
 Year: 2020

Accompanied by Omega box, polishing cloth, receipt of purchase and certificate from authorized retailer Klarlund 2020.

DKK 40,000-60,000 / € 5,400-8,050



912
ROLEX
 Model: Daytona
 Reference: 116519
 Movement: Automatic chronograph, cal. 4130
 Material: 18k white gold
 Diameter: 40 mm
 Strap/Bracelet: Brown Rolex alligator strap
 Buckle/Clasp: 18k white gold Rolex C-type buckle
 Year: 2012

*Middle case no. 116519
 Case back no. 2119
 Movement no. C0613113
 Serial no. Z254251
 Folding clasp no. 24650*

Accompanied by Rolex box, manual, receipt of purchase from Kleen Edelmetalen 2015 and certificate from authorized retailer Badort 2012.

Items made of crocodile or alligator skin require a CITES export permit in order to be exported from Denmark to a country outside The European Union. Buyers residing outside the European Union are required to obtain this permit. More information is available upon request.

DKK 150,000-200,000 / € 20,000-27,000



912



913

913
ROLEX
 Model: Cellini
 Reference: 4350
 Movement: Automatic, cal. 1601
 Material: 18k gold
 Diameter: 27 x 36 mm
 Strap/Bracelet: 18k gold Rolex bracelet
 Buckle/Clasp: 18k gold Rolex folding clasp
 Circumference: app. 18.5 cm
 Year: 1970s

Case back no. 782

*Provenance: Bruun Rasmussen Auction 821 lot 781.
 This particular watch was purchased by Simon Spies at authorized
 Rolex dealer Klarlund in Copenhagen. He purchased two watches
 of the same reference and gave this piece to Karl Olsen, who was
 co-founder and CEO of Spies Rejser. Simon Spies wore the other
 watch until his death in 1984.*

DKK 50,000-60,000 / € 6,700-8,050



914

914
ROLEX
 Model: Day-Date
 Reference: 18038
 Movement: Automatic, cal. 3055
 Material: 18k gold
 Diameter: 36 mm
 Strap/Bracelet: 18k gold Rolex "President" bracelet
 Buckle/Clasp: 18k gold Rolex folding clasp
 Circumference: app. 19 cm
 Year: 1981

*Middle case no. 18038
 Case back no. 18000
 Movement no. 6069890
 Serial no. 7024372
 End link no. 55
 Folding clasp no. F18000*

*Accompanied by Rolex box and service papers from authorized
 retailer Klarlund 2009. The hour markers are set with single- and
 baguette-cut diamonds.*

DKK 100,000 / € 13,500

915
CARTIER
 Model: Ballon Bleu
 Reference: WGBB0011
 Movement: Automatic, ETA cal. 2671
 Material: 18k gold
 Diameter: 36 mm
 Strap/Bracelet: 18k gold Cartier bracelet
 Buckle/Clasp: 18k gold Cartier folding clasp
 Circumference: app. 21.5 cm
 Year: 2010s

*Case back no. 91597NX 3002
 Movement no. 4076MD*

*Accompanied by Cartier box.
 DKK 80,000-100,000 / € 11,000-13,500*



915





916

916
PATEK PHILIPPE
 Model: Celestial
 Reference: 5102J-001
 Movement: Automatic, cal. 240 LU CL
 Material: 18k gold
 Diameter: 43 mm
 Strap/Bracelet: Black crocodile strap
 Buckle/Clasp: 18k gold Patek Philippe C-type buckle
 Year: circa 2008

Movement no. 3580260/4464126.

Accompanied by Patek Philippe box, cloth pouch, manual and Patek Philippe leather folder including additional, photographic material and a certificate from authorized retailer Ole Mathiesen 2009. Please note that the watch will be sold with a black calfskin strap.

Originally introduced in 2002, the Patek Philippe Celestial reference 5102 is an amazing piece of horological innovation, encompassing several sophisticated astronomical indications such as a sky chart, phases and orbit of the moon and the time of meridian passage of Sirius and of the moon. As such, the dial depicts the nocturnal sky of the northern hemisphere with a white oval frame which encompasses the sky visible along the longitude of Genève. To achieve such a feat, the astronomical displays of the reference 5102 rely on a complex 3-stacked system of sapphire crystal discs, each rotating at different speeds corresponding to their distinctive astronomical cycles, in turn providing the dial with a mesmerizing and dimensional depth to this complicated timepiece.

DKK 1,000,000-1,200,000 / € 135,000-160,000



917

917
CHOPARD
Model: Art Deco
Reference: 5026
Movement: Manual
Material: 18k white gold
Diameter: 14 x 27.5 mm
Strap/Bracelet: Black Chopard strap
Buckle/Clasp: Steel C-type buckle
Year: 1980-90s

Watch set with numerous brilliant-cut diamonds.
DKK 20,000-30,000 / € 2,700-4,050

918
ORFINA
Movement: Manual
Material: Platinum
Diameter: 10 x 22.5 mm
Strap/Bracelet: Platinum bracelet
Buckle/Clasp: Platinum folding lock
Circumference: app. 17 cm
Year: 1930-40s

Watch set with numerous single-cut diamonds and three brilliant-cut diamonds.
DKK 15,000-20,000 / € 2,000-2,700



918

919
PIAGET
Reference: 9706 A 6
Movement: Manual
Material: 18k white gold
Diameter: 24 mm
Strap/Bracelet: 18k white gold Piaget bracelet
Buckle/Clasp: 18k white gold Piaget folding clasp
Circumference: app. 16.5 cm
Year: 1960s

Accompanied by one additional mineral glass and unoriginal box. The bezel is set with numerous brilliant-cut diamonds and four faceted sapphires.
Serial no. 168043 DKK 25,000-30,000 / € 3,350-4,050



919

920
CARTIER
Model: Tank Francaise
Reference: 2517
Movement: Quartz
Material: 18k white gold
Diameter: 20.5 x 26 mm
Strap/Bracelet: 18k white gold Cartier bracelet
Buckle/Clasp: 18k white gold Cartier folding clasp
Circumference: app. 17 cm
Year: 2006

Accompanied by manual, fabric pouch and certificate from authorized retailer Cartier Monte Carlo 2006. Watch and bracelet set with numerous brilliant-cut diamonds by Cartier.
DKK 150,000-200,000 / € 20,000-27,000



920

921
CHOPARD
Model: Happy Diamonds
Reference: 5231
Movement: Quartz
Material: 18k white gold
Diameter: 27 mm
Strap/Bracelet: 18k white gold Chopard bracelet
Buckle/Clasp: 18k white gold Chopard folding clasp
Circumference: app. 15 cm
Year: 1994

Accompanied by one additional link, receipt of purchase and certificate from authorized retailer Juwelier Kurz 1994. Watch set with numerous brilliant- and single-cut diamonds and five floating brilliant-cut diamonds.
DKK 20,000-30,000 / € 2,700-4,050



921



922

922
CHOPARD
Model: Happy Sport
Reference: 28/8914/8
Movement: Quartz
Material: Steel
Diameter: 38.5 mm
Strap/Bracelet: Blue Chopard rubber strap
Buckle/Clasp: Steel Chopard folding clasp
Year: 2000s

Accompanied by two additional Chopard rubber straps. The bezel and four floating objects are set with numerous brilliant-cut diamonds and presumably faceted pink sapphires.

DKK 18,000-20,000 / € 2,400-2,700



923

923
CHANEL
Model: J12
Reference: D.N.23287
Movement: Automatic chronograph
Material: White ceramic
Diameter: 41 mm
Strap/Bracelet: White ceramic Chanel bracelet
Buckle/Clasp: Steel Chanel folding clasp
Circumference: app. 17.5 cm
Year: 2000s

The bezel is set with numerous brilliant-cut diamonds.

DKK 30,000-40,000 / € 4,050-5,400

924
CARL F. BUCHERER
Model: Patravi TravelTec
Reference: 10620.08
Movement: Automatic chronograph, ETA cal. 2894
Material: Steel
Diameter: 46,5 mm
Strap/Bracelet: Black Carl F. Bucherer rubber strap
Buckle/Clasp: Steel Carl F. Bucherer C-type buckle
Year: 2010s

Movement no. 197865

Accompanied by an additional Bucherer folding clasp of steel.

DKK 20,000-30,000 / € 2,700-4,050



924

925
JAEGER-LECOULTRE
Model: Master Control
Reference: 140.840.932B
Movement: Automatic, cal. 938
Material: Steel
Diameter: 37 mm
Strap/Bracelet: Black alligator strap
Buckle/Clasp: Steel Jaeger-LeCoultre folding clasp
Year: 2000s

Accompanied by Jaeger-LeCoultre box, manual and certificate from authorized retailer Ole Mathiesen 2001.

Items made of crocodile or alligator skin require a CITES export permit in order to be exported from Denmark to a country outside The European Union. Buyers residing outside the European Union are required to obtain this permit. More information is available upon request.

DKK 25,000-30,000 / € 3,350-4,050



925



926

926
PATEK PHILIPPE
 Model: Nautilus
 Reference: 4700/5
 Movement: Quartz, cal. E19 C
 Material: 18k gold
 Diameter: 26 mm
 Strap/Bracelet: 18k gold Patek Philippe bracelet
 Buckle/Clasp: 18k gold Patek Philippe folding clasp
 Circumference: app. 16 cm
 Year: 1988

Case back no. 2.830.483
 Movement no. 1.520.362

Accompanied by Patek Philippe box, fabric pouch and Extract of the Archives from 2013. Dial set with numerous single-cut diamonds. Bezel set with numerous brilliant- and single-cut diamonds. Bracelet set with numerous single-cut diamonds.

DKK 125,000-150,000 / € 17,000-20,000



927

927
AUDEMARS PIGUET
 Model: Royal Oak
 Reference: 15000SA
 Movement: Automatic, cal. 2140
 Material: 18k gold and steel
 Diameter: 33.5 mm
 Strap/Bracelet: 18k gold and steel Audemars Piguet bracelet
 Buckle/Clasp: 18k gold and steel Audemars Piguet folding clasp
 Circumference: app. 17 cm
 Year: 1990s

Serial no. D78319.

Accompanied by Audemars Piguet fabric pouch and one additional link. DKK 80,000-100,000 / € 11,000-13,500

928
AUDEMARS PIGUET
 Model: Royal Oak
 Reference: 15300
 Movement: Automatic, cal. 3120
 Material: Steel
 Diameter: 39 mm
 Strap/Bracelet: Steel Audemars Piguet bracelet
 Buckle/Clasp: Steel Audemars Piguet folding clasp
 Circumference: app. 19.5 cm
 Year: 2000s

Serial no. F90842

The seconds hand has been removed.
 DKK 250,000-300,000 / € 33,500-40,500



928



929

929
A. LANGE & SÖHNE
 Model: Große Arkade
 Reference: 812.029
 Movement: Manual, cal. L911.4
 Material: 18k white gold
 Diameter: 25.5 x 38 mm
 Strap/Bracelet: Blue A. Lange & Söhne crocodile strap
 Buckle/Clasp: 18k white gold A. Lange & Söhne C-type buckle
 Year: 2010

Accompanied by A. Lange & Söhne box, manual, polishing cloth, setting pin and certificate from authorized retailer Ole Mathiesen 2010. Bezel set with numerous brilliant-cut diamonds.

Items made of crocodile or alligator skin require a CITES export permit in order to be exported from Denmark to a country outside The European Union. Buyers residing outside the European Union are required to obtain this permit. More information is available upon request. DKK 80,000-100,000 / € 11,000-13,500



930
PATEK PHILIPPE
 Model: Gondolo
 Reference: 5024G-010
 Movement: Manual, cal. 215
 Material: 18k white gold
 Diameter: 30 x 38 mm
 Strap/Bracelet: Black Patek Philippe alligator strap
 Buckle/Clasp: 18k white gold Patek Philippe C-type buckle
 Year: 2005

Serial no. 1893024

Accompanied by Patek Philippe box, manual and receipt of purchase from authorized retailer Ole Mathiesen 2005.

Items made of crocodile or alligator skin require a CITES export permit in order to be exported from Denmark to a country outside The European Union. Buyers residing outside the European Union are required to obtain this permit. More information is available upon request. DKK 60,000-80,000 / € 8,050-11,000



930





931

931
I W C
Model: Aquatimer
Reference: IW376803
Movement: Automatic chronograph, cal. 79320
Material: Steel
Diameter: 44 mm
Strap/Bracelet: Black IWC rubber strap
Buckle/Clasp: Steel IWC folding clasp
Year: 2019

Accompanied by IWC box, manual, polishing cloth and certificate from authorized retailer Watches of Switzerland 2013.
DKK 30,000-40,000 / € 4,050-5,400



932

932
P A N E R A I
Model: Luminor Marina
Reference: OP 6558
Movement: Automatic, Valjoux cal. 7750-P1
Material: Titanium
Diameter: 44 mm
Strap/Bracelet: Black Panerai rubber strap
Buckle/Clasp: Steel Panerai folding clasp
Year: 2000s

Limited edition no. 0038/2000.

Accompanied by Panerai box, manual, an additional Panerai steel bracelet and service papers from Panerai 2016.
DKK 25,000-30,000 / € 3,350-4,050



933
P A N E R A I
Model: Luminor 1950 GMT
Reference: PAM 1321
Movement: Automatic, cal. P.9012
Material: Steel
Diameter: 43 mm
Strap/Bracelet: Black leather strap
Buckle/Clasp: Steel Panerai C-type buckle
Year: 2021

Limited edition no. 304/1500.

Accompanied by Panerai box, manual, additional Panerai rubber strap, toolkit, polishing cloth and certificate.
DKK 40,000-50,000 / € 5,400-6,700



933



934

934
M O N T B L A N C
Model: Sport
Reference: 7179
Movement: Automatic chronograph, Valjoux cal. 7750
Material: Steel
Diameter: 44
Strap/Bracelet: Steel Montblanc bracelet
Buckle/Clasp: Steel Montblanc folding clasp
Circumference: app. 18 cm
Year: 2010s

Accompanied by two additional links.
DKK 15,000-20,000 / € 2,000-2,700

INDEX

A

A. Lange & Söhne	929
Aagaard Andersen, Gunnar	811
	813, 814
Ahlberg, Ole	746
Alechinsky, Pierre	671, 672
	679, 689, 855
	856, 861, 862
	863, 865, 866
Alfelt, Else	666, 667
Anastasi, William Joseph	784
Andersen, Mogens	736
Appel, Karel	673, 861
Arnoldi, Per	830
Audemars Piguet	906
	908, 927, 928

B

Balle, Mogens	696
Baume & Mercier	904
Bech, Poul Anker	747
Bille, Ejler	683
Bjerg, Johannes C.	759
Bjerke-Petersen, Vilhelm	740, 742, 826
Bogusz, Marian	799
Braque, Georges	837, 838
Breitling	894
Bucherer	924
Buffet, Bernard	726

C

Carl-Nielsen, Anne Marie	654, 771
Cartier	915, 920
Chadwick, Lynn	732
Chanel	923
Chillida, Eduardo	836, 885
Chopard	917, 922
Christensen, John	755, 756
Christiansen, Jesper	789, 790
Christoforou, John	829
Clausen, Franciska	664
Corneille	687, 697

D

Dali, Salvador	884
----------------	-----

Dalsgaard, Sven	801
Debré, Olivier	722
Deyrolle, Jean	720, 727
Dröschner, Benny	794

E

Engman, Harald	761, 762, 763
Estève, Maurice	725, 858, 860

F

Fahlström, Öyvind	867
Ferlov Mancoba, Sonja	665
Fischer, Lothar	815
Francis, Sam	859
Freddie, Wilhelm	741, 818
Förg, Günther	735

G

Geoffroy / Colonel, Thierry	798
Gernes, Poul	808
Giersing, Harald	642, 644
Gillet, Roger Edgar	816
Gunawan, Hendra	748

H

Hansen, Harald	754
Harboe Flensburg, Anette	705, 706
	712, 782, 785
Haugen Sørensen, Arne	820
Havsteen-Mikkelsen, Sven	640
Heerup, Henry	670, 686
	772, 773, 778
Hentze, Gudmund	765
Hirst, Damien	883
Holm, Astrid	651, 652
Holm-Møller, Olivia	653, 657
Hoppe, Erik	749
Hornung, Preben	731, 734, 743
	803, 804, 817
Høst, Oluf	636, 641

I

Isakson, Karl	646, 647
Isbrand, Victor	764
Ivarson, Ivan	768
IWC	931

J

Jacobsen, Egill	691, 694, 698
Jacobsen, Robert	718, 721, 728
	805, 806
Jaeger-LeCoultre	925
Joensen-Mikines, Samuel	639
Johansen, Svend	760
Johns, Jasper	868
Jonone/Jon156	713
Jorn, Asger	669, 677
	682, 685, 688
	690, 692, 693,
	774, 775, 853
	854, 857, 864

K

Kernn-Larsen, Rita	649, 663
Kirkeby, Per	733
Kito, Akira	800
Krøjer, Tom	821
Kvium, Michael	704, 783, 792
Kørner, John	710, 796

L

Lausten, Thorbjørn	807
Lemmerz, Christian	793
Levi, Carlo	827
Longines	898
Lundstrøm, Vilhelm	645

M

Mancoba, Ernest	676
	681, 851, 852
Marfaing, André	715
	716, 717, 719
McKeever, Ian	703, 780, 781
Mellerup, Tage	776
Mertz, Albert	809, 810, 812
Miró, Joan	872
	873, 874, 877
Montblanc	934
Moore, Henry	886
Mortensen, Richard	739
Munch, Edvard	841
	842, 846, 847
	848, 849, 850
Mäntynen, Jussi	769

INDEX

N

Nash, Jørgen	819
Nejad, Mehmed Melih Devrim	723
Nielsen, Jais	753
Nupen, Kjell	825
Nørgård, Lars	787, 795, 797

O

Olsen, Torbjørn	750
Olson, Erik	770
Omega	890, 903, 911
Otte, Allan	711

P

Panerai	932, 933
Patek Philippe	905
	907, 909, 910
	916, 926, 930
Pedersen, Carl-Henning	678
	680, 684, 695
	699, 777, 779

Pellón, Gina	824
Piaget	919
Picasso, Pablo	831, 839
	840, 844, 845
Poliakoff, Serge	871

R

R, Tal	702
Reyle, Anselm	700, 714
Reyni, Ingálvur av	730
Richier, Germaine	724
Rokkaku, Ayako	701, 708
Rolux	887, 888, 889
	891, 892, 893
	895, 897, 899
	900, 901, 902
	912, 913, 914
Rooskens, Anton	674
Rosenquist, James	869
Rude, Olaf	752
Rustin, Jean	828

S

Schwalbe, Ole	802
Skulason, Thorvaldur	729

Smith, Ruth	658
Soulages, Pierre	832
	833, 834, 835
Staël, Nicolas de	870
Stefánsson, Jón	638
Sveinsdóttir, Juliana	659
Swane, Christine	656
Søndergaard, Jens	637, 751

T

Thommesen, Erik	675
Thoresen, Elsa	660, 661, 662
Tillegreen, Alexander	786
Trampedach, Kurt	744
	745, 822, 823
Tudor	896

V

Vallotton, Felix	843
Valsang, Tatjana	707, 788
Varming, Hanne	758, 766
Voss, Jan	737

W

Warhol, Andy	878, 879
	880, 881, 882
Wegener, Gerda	650, 655
Weie, Edvard	634, 643
Wemaëre, Pierre	668, 692
Wiig Hansen, Svend	738
Willumsen, J. F.	635, 648, 757
Wils, Wilhelm	767
Wou-Ki, Zao	875, 876

Æ

Ærtebjerg, Kathrine	709, 791
---------------------	----------



ASIAN DECORATIVE ART

Live Auction 1 December 2021 2 pm

*A pair of Chinese richly embroidered silk temple banners.
Daoguang 1820-1850. L. 325 cm.*

Estimate: DKK 60,000-80,000 / € 8,050-11,000

*A magnificent pair of cloisonné enamel "Eight Buddhist
Emblems" moonflasks, Bianhu. Qing 18th-19th c. H. 53.5 cm.*

Estimate: DKK 100,000-150,000 / € 13,500-20,000

*A limestone head of a bodhisattva. Possibly Sui Dynasty
581-618. H. 33 cm.*

Estimate: DKK 200,000-300,000 / € 27,000-40,500



 **BRUUN RASMUSSEN**
AUCTIONEERS

RUSSIAN ART AND ANTIQUES

Live Auction 2 December 2021 3 pm

*Feodor Rückert: A Russian silver-gilt and shadowed
cloisonné enamel casket. H. 5 cm. W. 9.5 cm. D. 5.3 cm.*

Estimate: DKK 50,000-60,000 / € 6,700-8,050

*Johannes Zehngraf: A miniature portrait of Grand Duchess
Olga Nikolaevna. (1895-1918). Signed. 5.4 x 4.4 cm.*

Estimate: DKK 30,000-40,000 / € 4,050-5,400

*August Hollming, Fabergé: A Russian 14k gold, purple
opaque enamel, and diamond pendant ball-watch.
H. 6 cm.*

Estimate: DKK 50,000-60,000 / € 6,700-8,050



 **BRUUN RASMUSSEN**
AUCTIONEERS

Disse købsvilkår udgør Bruun Rasmussen Kunstauktioner A/S' ("BRK") købsvilkår for traditionelle auktioner og er gældende fra 1. februar 2017. BRK kan til enhver tid ændre købsvilkårene.

Ved bud accepterer budgiver/køber at være bundet af de til enhver tid gældende købsvilkår, som fremgår på bruun-rasmussen.dk. Købsvilkårene gælder både i forhold til erhvervsdrivende og forbrugere.

FØR AUKTIONEN

1 VURDERING AF GENSTANDE

1.1 Alle udbudte genstande er vurderet af BRK. Vurderingen er et skøn over det forventede hammerslag, jf. punkt 5.3. Vurderingen er baseret på tidligere salg af samme type genstande og erfaringer hos BRK. Hammerslag kan derfor falde højere eller lavere ud end vurderingen.

2 BESKRIVELSE AF GENSTANDE

- 2.1 Udbudte genstande præsenteres med fotos og beskrivelse i kataloger og på bruun-rasmussen.dk. Beskrivelsen foretages efter bedste overbevisning af BRK og ud fra en nøje undersøgelse efter den på salgstidspunktet herskende opfattelse blandt eksperter.
- 2.2 De udbudte genstande er af en alder og art, der bevirker, at de ofte er behæftede med slitage, mangler, beskadigelser og reparationer. Som udgangspunkt sælges alt som brugte genstande, og derfor indeholder beskrivelsen i kataloget og på bruun-rasmussen.dk ikke en redegørelse for ovenstående punkter eller genstandens stand.
- 2.3 I visse tilfælde vælger BRK at beskrive en genstands oprindelse. Det sker, hvis en tidligere ejer er offentlig kendt, og/eller hvis historien om et tidligere ejerskab belyser genstanden og dens art. Omvendt sker det også, at sådanne informationer udelades fra beskrivelsen, f.eks. for at imødekomme sælgers ønske om diskretion.
- 2.4 Vurderingen og beskrivelsen kan blive revideret forud for auktionen. Ændringer offentliggøres på bruun-rasmussen.dk

3 EFTERSYN

- 3.1 Udbudte genstande udstilles op til auktionen i et showroom hos BRK. Potentielle budgivere opfordres til at se genstanden efter i detaljer og har selv ansvaret for at forvise sig om dens stand på disse eftersyn, hvor der også er mulighed for at rådføre sig hos vurderingssagkyndige.
- 3.2 Hvis en potentiel køber ikke har mulighed for at besigtige genstanden ved selvsyn, kan der i de fleste tilfælde udfærdiges en konditionsrapport. Beskrivelsen heri er foretaget efter BRK's bedste overbevisning, men er ikke baseret på videnskabelige undersøgelser. En konditionsrapport tjener blot som identifikation og er ment som en hjælp til budgivere, der ikke selv har mulighed for at besigtige genstanden på eftersynet.

UNDER AUKTIONEN

4 BRK'S ROLLE

- 4.1 Salget af en genstand formidles af BRK på vegne af sælger. BRK afhænder altid udbudte genstande til den højst mulige pris under budgivningen.
- 4.2 Udbudte genstande kan have en med sælger aftalt mindstepris, hvorunder den ikke kan sælges. Denne pris er fortrolig.
- 4.3 De traditionelle auktioner overværes af en af Justitsministeriet beskikket auktionsleder, der sikrer, at auktionerne går retmæssigt for sig.

5 BUDGIVNING

- 5.1 Auktionerne afvikles i danske kroner. De tilnærmelsesvise beløb i euro/US dollar vil blive oplyst på skærme i auktionssalen og i øvrigt på opfordring.
- 5.2 Auktionarius bestemmer overbuds størrelse og i hvilket tempo, auktionen afvikles. Overbud stiger normalt med 5 % - 10 % i forhold til det foregående bud. Normalt sælges der 50-100 katalognumre i timen.
- 5.3 Hammerslag betegner både det forhold, at auktionarius slår med hammeren og derved markerer budgivningens afslutning, og den pris (budsum), den udbudte genstand sælges til. Se punkt 7 vedrørende beløb, der tillægges hammerslaget.
- 5.4 Køber er den budgiver, der opnår hammerslag. Ved hammerslaget indgås på baggrund af disse købsvilkår en bindende købs-/salgsaftale.
- 5.5 Bydes på andres vegne, hæfter budgiver som selvskyldnerkautionist for handlen.
- 5.6 Genstande købes som beset, og køber har uanset budtype ingen fortrydelsesret, heller ikke efter forbrugeraftaleloven.
- 5.7 Budgiver skal efter anvisninger fra BRK identificere sig og dokumentere sin betalingsdygtighed, f.eks. ved registrering af gyldigt betalings-/kreditkort, bankgaranti eller indbetaling af depositum.
- 5.8 BRK kan nægte at acceptere et bud, hvis en tilstrækkelig sikkerhed for betaling mangler, eller hvis budgiver tidligere har misligholdt betalingsforpligtigelser ved køb hos BRK.
- 5.9 Auktionslederen træffer i samråd med auktionarius afgørelse i alle tvivlstilfælde omkring budgivningen.

6 BUDTYPER

- 6.1 Der er følgende muligheder for at afgive bud:
- PERSONLIGT FREMMØDE:**
 Registrering og udlevering af bydeskilt foregår ved indgangen til auktionssalen. Når budgiver ønsker at byde, signaleres dette til auktionarius ved at række bydeskiltet i vejret og tydeligt fremvise dets nummer.
- KOMMISSIONSBUD:**
 Det ønskede maksimale bud kan afgives via bruun-rasmussen.dk frem til auktionens start eller pr. e-mail, fax eller telefon, så budet er modtaget senest 24 timer forud for auktionens start. En kommissionær byder på budgivers vegne inden for rammerne af det ønskede maksimalbud og vil altid afgive lavest muligt overbud.
- TELEFONBUD:**
 I forhold til visse genstande er der mulighed for at blive ringet op af en medarbejder fra BRK, der vil byde på budgivers vegne under auktionen. Servicen kan bestilles via bruun-rasmussen.dk indtil tre timer før auktionens start.

LIVE BIDDING:

Det er muligt at følge auktionen live og byde med via bruun-rasmussen.dk

FORAUKTION:

Visse traditionelle auktioner indledes med en net-auktion. De højeste bud på net-auktionen danner udgangspunktet på den efterfølgende traditionelle auktion.

EFTER AUKTIONEN

7 BELØB, DER TILLÆGGES HAMMERSLAGET

- 7.1 1 tillæg til hammerslaget, jf. punkt 5.3, skal køber for den enkelte genstand betale købersalær og, hvis betingelserne er opfyldt, de øvrige beløb, der er nærmere beskrevet nedenfor. Det samlede beløb, som køber skal betale til BRK, benævnes "købesummen".
- 7.1.1 Købersalær: Hammerslaget tillægges et salær til BRK. På de traditionelle auktioner udgør salæret 24 % af hammerslaget + moms af salæret, i alt 30 %. For frimærker og mønter udgør salæret 20 % af hammerslaget + moms af salæret, i alt 25 %.
- 7.1.2 "LIVE bidding": BRK's egen "LIVE bidding"-software via bruun-rasmussen.dk er gratis at benytte for budgivere. Benyttes en "LIVE bidding"-software fra tredje part, tillægges købersalæret en afgift på 3 % plus moms, der videregives til tredje part i sin helhed.
- 7.1.3 Fuldmoms: Visse genstande handles efter de gældende regler om fuldmoms. Her beregnes der moms på 25 % af både hammerslag og salær. Disse genstande er i beskrivelsen i kataloget og på bruun-rasmussen.dk mærket med symbolet "*" eller med teksten: "Dette emne handles i fuldmoms".
- 7.1.4 Kunstnerafgift: Ifølge dansk lovgivning om ophavsret skal der opkræves kunstnerafgift (følgeretsvederlag) for værker af nyere danske og visse udenlandske kunstnere, som enten er nulevende eller ikke har været døde i mere end 70 år. Kunstnerafgiften opkræves på vegne af VISDA. Disse værker er i kataloget mærket med "ARR" (Artist's Resale Right) og på bruun-rasmussen.dk med teksten "Dette emne er belagt med kunstnerafgift". Kunstnerafgiften tillægges hele hammerslaget + salær (ekskl. moms), når beløbet overstiger 300 euro, som angivet nedenfor:
- | Hammerslag + salær (ekskl. moms) | Betalingssats |
|----------------------------------|---------------|
| 300,01 - 50.000 euro | 5% |
| 50.000,01 - 200.000 euro | 3% |
| 200.000,01 - 350.000 euro | 1% |
| 350.000,01 - 500.000 euro | 0.5% |
| over 500.000 euro | 0.25% |
- Kunstnerafgiften kan ikke overstige 12.500 euro (ekskl. moms) for den enkelte genstand. Afgiften skal betales i danske kroner, og omregningskursen (EUR/DKK) fastsættes af VISDA.
- 7.1.5 Betalings-/kreditkortgebyr: BRK forbeholder sig ret til at opkræve de af indløsningselskaberne pålagte betalings-/kreditkortgebyrer. Satserne fremgår ved budgivning via bruun-rasmussen.dk og ved betaling.

8 BETALINGSFRIST

- 8.1 Købesummen forfalder til betaling ved hammerslaget, og køber har herefter otte dage til at betale købesummen til BRK.

9 BETALINGSMÅDER

- 9.1 Betaling kan ske på følgende måder:
- A: Med betalings-/kreditkort (Dankort, Visa, MasterCard, Maestro, Diners Club, JCB og China UnionPay) eller kontant (op til 19.999 kr.) i auktionssalen eller efterfølgende i en afdeling hos BRK. Bemærk, at vi ikke modtager 500-eurosedler.

- B: Med betalings-/kreditkort (Dankort, Visa, MasterCard, Maestro, Diners Club og JCB) på bruun-rasmussen.dk under købers personlige side.
- C: Via bankoverførsel til BRK's konto i Danske Bank: 4183 4310970638 · Swift/BIC: DABADKKK · IBAN: DK4130004310970638.

10 MOMSFRTAGELSE, -BETALING OG -DEPONERING

- 10.1 Visse købere kan vælge hvilken momstype, der skal være gældende for handlen. Valget skal meddeles BRK senest to hverdage efter købet og kan ikke omgøres.
- A: Momsregistrerede virksomheder i Danmark kan vælge, at handlen skal ske efter reglerne om fuldmoms, jf. punkt 7.1.3.
- B: Momsregistrerede virksomheder i et andet EU-land kan fritages for dansk moms, når det kan dokumenteres, at genstanden er transporteret til den udenlandske adresse, som køber har oplyst over for BRK, og som er anført på fakturaen. I sådanne tilfælde skal der afregnes moms efter de gældende regler i det land, hvor køber er momsregistreret. Det tilrådes at søge oplysning hos de lokale myndigheder. Køber kan undlade at gøre brug af muligheden for momsfrigtagelse og i stedet betale dansk brugtmoms/fuldmoms.
- C: Købere med bopæl uden for EU kan fritages for dansk moms, når det kan dokumenteres, at genstanden er transporteret ud af EU. BRK udsteder så vidt muligt og mod gebyr de fornødne eksportpapirer, som skal fremvises ved toldmyndighederne. Køber kan undlade at gøre brug af muligheden for momsfrigtagelse og i stedet betale dansk brugtmoms/fuldmoms.
- 10.2 Momsregistrerede virksomheder i et andet EU-land og købere med bopæl uden for EU skal deponere den danske moms af fakturabeløbet hos BRK, indtil eksporten er gennemført på dokumenteret lovligt vis. Foretages eksporten af en af BRK godkendt speditor, skal momsen ikke deponeres. Se listen over godkendte speditorer på bruun-rasmussen.dk
- 11 **OVERSKRIDELSE AF BETALINGSFRIST**
- 11.1 Overskrides en betalingsfrist, herunder fristen i punkt 8, opkræves morarenter, som beregnes efter Nationalbankens officielle udlånsrente + 8 % om året af det skyldige beløb.
- 11.2 Betales købesummen inkl. renter ikke senest ti dage efter, at der er fremsat påkrav herom, er BRK berettiget til at søge købesummen betalt ved modregning i depositum/ved træk på bankgaranti eller at hæve købet.
- 11.3 Hæves købet, er BRK berettiget til at sælge genstanden på en ny auktion og kræve omkostningerne og en eventuel difference mellem hammerslag (samt salær), der er opnået på de to auktioner, betalt af den misligholdende køber.
- 11.4 Alle forfaldne krav (inkl. omkostninger), som ikke betales rettidigt, kan BRK i tillæg til inkasso søge inddrevet på følgende måder:
- A: For købers regning sælge genstande indleveret til auktion af eller på vegne af køber. Salget kan gennemføres uden hensyntagen til en aftalt mindstepris. Genstande indleveret til auktion kan ikke kræves udleveret, så længe forfalden gæld henstår ubetalt.
- B: Inddrage købers tilgodehavende hos BRK, herunder tilgodehavende fra salg af genstande indleveret af eller på vegne af køber, uanset om et sådant tilgodehavende stammer fra auktionssalg, som ligger forud for eller efter tidspunktet for købers misligholdelse.

12 AFHENTNING OG UDLEVERING

- 12.1 Ejendomsretten til en købt genstand overgår til køber, når hele købesummen inkl. eventuelle renter og gebyrer er betalt, og først herefter kan udlevering af genstanden finde sted.
- 12.2 Ved udlevering af en købt genstand forbeholder BRK sig retten til at kræve tilfredsstillende dokumentation for, at den person, som ønsker genstanden udleveret, enten selv er køberen eller er bemyndiget af køberen til at få genstanden udleveret.
- 12.3 Udlevering af visse våben kræver forevisning af gyldig våbentilladelse. Sådant krav er angivet med teksten "Køb af dette emne kræver forevisning af gyldig våbentilladelse" i kataloget og på bruun-rasmussen.dk
- 12.4 Købte genstande henligger fra hammerslaget for købers regning og risiko. Afhentning skal ske senest otte hverdage efter sidste auktionsdag.
- 12.5 Foretages afhentningen ikke rettidigt, transporteres de købte genstande til et lager for købers regning og risiko. Transporten koster 150 kr. inkl. moms pr. genstand, og opbevaringen koster 150 kr. inkl. moms pr. genstand pr. påbegyndt uge. Henligger en genstand uafhentet i så lang tid, at lagerlejen overstiger genstandens værdi, er BRK berettiget til for købers regning og risiko og uden hensyn til mindstepris at bortauktionere genstanden eller sælge den underhånden. Køber hæfter fortsat for udgifter til transport og lagerleje, der ikke dækkes ved sådant salg.
- 12.6 I henhold til gældende hvidvasklovgivning skal køber i visse tilfælde udlevere identitetsoplysninger og fremvise billed-id til BRK, før køber kan få den købte genstand i sin besiddelse

13 FORSENDELSE

- 13.1 Er køber forhindret i selv at afhente en genstand, tilbyder BRK for købers regning og risiko at emballere og arrangere forsendelse enten med post eller speditør. Se punkt 12.2 angående legitimation.

14 EKSPORTTILLADELSE

- 14.1 For at sikre at dansk kulturarv af afgørende betydning forbliver i Danmark, kan Kulturværtdiudvalget for visse genstandes vedkommende nedlægge eksportforbud. Hvis køber ønsker at eksportere en genstand ud af Danmark, hvor der er nedlagt et eksportforbud, annulleres købet, og Kulturværtdiudvalget er forpligtet til at overtage genstanden til den pris, der blev opnået på auktionen. Køber kan ikke rejse krav mod BRK som følge af, at et eksportforbud bliver nedlagt.
- 14.2 Visse genstande er omfattet af Washingtonkonventionen, også kendt som CITES, der har til formål at stoppe ulovlig handel med genstande fremstillet af udryddelsestruede vilde dyr og planter. Såfremt en genstand er omfattet af Washingtonkonventionen, CITES, liste 1, vil det fremgå af beskrivelsen på bruun-rasmussen.dk og være markeret med symbolet "©" i kataloget. Følgende regler gør sig gældende:
- A: Genstande omfattet af Washingtonkonventionen, CITES, liste 1, må kun handles, når der foreligger en dispensation i form af et såkaldt CITES-salgscertifikat. BRK indhenter det fornødne certifikat fra Naturstyrelsen, der tillader handel og eksport til lande inden for EU. Dog kan genstande, som er færdigforarbejdet før 1947, frit handles inden for EU uden et certifikat.
- B: Det er alene genstande omfattet af Washingtonkonventionen, CITES, liste 1, som er særkilt markeret på bruun-rasmussen.dk og i kataloget. Genstande omfattet af Washingtonkonventionen, CITES, liste 2, der frit kan sælges og transporteres inden for EU, er ikke særkilt markeret.
- C: Ved eksport til lande uden for EU skal der uanset årstallet for genstandens færdigforarbejdning altid indhentes en CITES-reeksporttilladelse fra Naturstyrelsen,

når genstanden er omfattet af Washingtonkonventionen, CITES, liste 1 og 2. Denne eksporttilladelse kan normalt indhentes problemfrit, når liste 1-genstande enten er solgt med et CITES-salgscertifikat eller er færdigforarbejdet før 1947. Liste 2-genstande opnår ligeledes normalt problemfrit en reeksporttilladelse. Eventuelle omkostninger, der opkræves at de danske myndigheder i forbindelse med udstedelse af en reeksporttilladelse, vil blive pålagt købers faktura.

D: I forbindelse med eksport til lande uden for EU kan særlige regler gøre sig gældende ifm. den efterfølgende import, og køber opfordres til at indhente oplysninger fra egne myndigheder.

15 MANGLER VED KØBTE GENSTANDE

- 15.1 Købelovens mangelsregler kan finde anvendelse. Nedenfor er angivet et ikke udtømmende uddrag af købers mangelsbeføjelser.
- 15.2 Køber er berettiget til at annullere et køb, hvis beskrivelsen har været behæftet med væsentlige fejl, der har ført til et højere hammerslag, end en korrekt beskrivelse ville have resulteret i. I sådanne tilfælde vil den samlede købesum blive refunderet. Køber kan ikke kræve betaling af renter af købesummen eller kræve dækning af anden udgift eller tab.
- 15.3 Et køb kan ikke annulleres, og køber kan ikke kræve købesummen refunderet eller rejse noget andet krav mod BRK, hvis beskrivelsen af genstanden er i overensstemmelse med punkt 2, eller hvis en påvisning af falskneri havde krævet brug af videnskabelige metoder, der enten ikke var tilgængelige på salgstidspunktet, havde været uforholdsmæssigt omkostningskrævende at anvende eller havde ført til beskadigelse af den pågældende genstand.
- 15.4 Krav om annullering af et køb skal meddeles BRK, når køber er blevet bekendt med det forhold, der berettiger køber til at annullere købet, dog senest to år fra den seneste afhentningsdato efter punkt 12.4. Den købte genstand skal returneres til BRK i samme stand som på hammerslagstidspunktet. Overholdes disse betingelser ikke, mister køber retten til at annullere købet og kan ikke kræve købesummen refunderet. Køber er selv ansvarlig for at betale de omkostninger, der er forbundet med returnering af genstanden.

16 INDSIGELSE- OG ANSVARSBEGRÆNSNING

- 16.1 BRK tager forbehold for fejl, tekniske vanskeligheder samt udefrakommende misbrug eller forstyrrende påvirkning under auktionen. Budgetgiver kan ikke rejse noget krav mod BRK som følge heraf.
- 16.2 Køber er i alle tilfælde selv ansvarlig for korrekt betaling af moms og andre afgifter, gebyrer mv. i overensstemmelse med danske og udenlandske regler.
- 16.3 Medmindre andet fremgår af disse købsvilkår, kan BRK aldrig blive ansvarlig for budgetgivers/købers driftstab, avancetab, andre indirekte tab eller følgeskader.

17 PERSONDATAPOLITIK

- 17.1 Det er vigtigt for BRK at sikre fortrolighed og sikkerhed omkring budgetgivers/købers personlige oplysninger. Persondatapolitikken fremgår af bruun-rasmussen.dk.

18 KLAGE, TVISTLØSNING OG LOVVALG

- 18.1 Har budgetgiver/køber en klage, kan der altid rettes henvendelse til BRK.
- 18.2 Lykkes det ikke at finde en løsning, kan forbrugere sende en klage til Nævnenes Hus, Toldboden 2, 8800 Viborg, e-mail: naevneneshus.dk. Forbrugere med bopæl i et andet EU-land end Danmark kan klage til EU-Kommissionens online klageportal via hjemmesiden: <http://ec.europa.eu/odr>.
- 18.3 Tvister skal indbringes i Danmark ved Københavns Byret, jf. dog punkt 18.2. I forbrugerforhold gælder de ufravigelige værnetingsregler.

Jesper Bruun Rasmussen, auktionsholder

Rev. 10.21

CONDITIONS OF PURCHASE – LIVE AUCTIONS

These conditions of purchase represent Bruun Rasmussen Kunstauktioner A/S' ("BRK") conditions of purchase for live auctions and are effective from 1 January 2017. BRK may modify the conditions of purchase at any time.

By bidding, the bidder/buyer accepts the current conditions of purchase as they appear on bruun-rasmussen.dk. The conditions of purchase are applicable to both business owners and consumers.

BEFORE THE AUCTION

1 VALUATION OF ITEMS

- 1.1 All the offered items are valued by BRK. The valuation is an estimate based on the expected hammer price, see paragraph 5.3. The estimate is based on the previous sale of similar items as well as BRK's past experience. The hammer price can therefore be higher or lower than the estimated price.

2 DESCRIPTION OF ITEMS

- 2.1 Items up for auction are presented with photographs and descriptions in catalogues and on bruun-rasmussen.dk. The description is worded according to the best of BRK's knowledge and based on detailed research in accordance with the prevailing views among experts at the time of sale.
- 2.2 The items up for auction are of an age and nature that often mean that they are in a worn, repaired or damaged condition. As a starting point everything is sold as used items. For this reason, the descriptions in the catalogue or at bruun-rasmussen.dk do not include a statement regarding the above or the condition of the item.
- 2.3 In some cases, BRK may choose to describe an item's provenance. Such a description is made if a former owner is publicly known and/or if the story of previous ownership sheds further light on the item and its background. In other cases, such information is left out of the description, for instance to meet the seller's wish for privacy.
- 2.4 It is possible that the estimate and description are revised prior to the auction. Changes are published on BRK's website.

3 PREVIEW

- 3.1 Items up for auction are presented prior to the auction in one of BRK's showrooms. Potential bidders are encouraged to inspect the items closely and are responsible for determining the condition of the items at these previews, where they also have the opportunity to consult with the valuation experts.
- 3.2 If a potential buyer does not have the opportunity to inspect the item personally, a condition report can be drafted in most cases. The description in this report has been made according to BRK's honest conviction but is not based on scientific studies. A condition report only serves as an identification and is meant as an aid to bidders who do not have the opportunity to inspect the item at the preview.

DURING THE AUCTION

4 THE ROLE OF BRK

- 4.1 The sale of an item is facilitated by BRK on behalf of the seller, and BRK always sells items up for auction at the highest price offered during the bidding round.

- 4.2 Items up for auction can have a reserve price that has been agreed upon with the seller. The price is confidential and the item cannot be sold below this price.

- 4.3 The live auctions are presided over by one of the Danish Ministry of Justice's appointed auctioneers, ensuring that the auctions proceed correctly and lawfully.

5 BIDDING

- 5.1 The currency used while the auctions take place is Danish kroner. The approximate amount in euro/US dollars is shown on screens in the saleroom and also on request.
- 5.2 The auctioneer determines the size of the bid increment and the pace of the auction. Bid increments usually rise by 5% - 10% compared to the previous bid. Approximately 50-100 auction lots are sold per hour.
- 5.3 The hammer price refers both to the gavel used by the auctioneer that signifies the end of a bidding round on an item and to the price (bidding amount) that the item up for auction is sold for. See paragraph 7 regarding amounts added to the hammer price.
- 5.4 The buyer is the bidder that submits the highest bid, thereby obtaining the hammer price. At the moment the hammer price is determined, a binding purchase/sale agreement is entered into based on these conditions of purchase.
- 5.5 If bids are made on behalf of others, the bidder serves as surety for the transaction.
- 5.6 Items are purchased in their present state and condition, and regardless of the type of bidding the buyer has no right to cancel his purchase, neither under the Danish Consumer Contracts Act.
- 5.7 Bidders are required, in accordance with BRK's instructions, to identify themselves and document their ability to pay, for instance by registration of a valid debit/credit card, bank guarantee or a deposit.
- 5.8 BRK may refuse to accept a bid if a sufficient guarantee of the bidder's ability to pay is not provided, or if the bidder has previously defaulted on payment obligations on purchases from BRK.
- 5.9 The overseeing auctioneer will, in consultation with the auctioneer at the podium, decide what to do in matters of dispute concerning a bidding round.

6 TYPES OF BIDDING

- 6.1 Bidding options:

IN PERSON:

Registration and obtaining the bidding paddle take place at the entrance to the saleroom. When the bidder wishes to bid, it is signalled to the auctioneer on the podium by raising the bidding paddle in the air and clearly displaying its number.

COMMISSION BIDS:

The intended maximum bid can be submitted via bruun-rasmussen.dk until the start of the auction or by e-mail, fax or phone, so that the bid is received no later than 24 hours prior to the start of the auction. A commission agent bids on behalf of the bidder within the limits of the stated maximum bid. The commission agent will always bid the lowest possible amount to achieve the hammer price.

TELEPHONE BID:

With certain items it is possible to have a BRK employee call the bidder over the phone. The employee will then bid on behalf of the bidder during the auction. The service can be booked via bruun-rasmussen.dk up until three hours before the auction is set to begin.

LIVE BIDDING:

It is possible to follow the auction live and bid on the auction lots via bruun-rasmussen.dk.

PRE-AUCTION:

Some live auctions are preceded by an online auction. The highest bids from the online auction then represent the starting bids at the following live auction.

AFTER THE AUCTION

7 AMOUNTS ADDED TO THE HAMMER PRICE

7.1 In addition to the hammer price, see paragraph 5.3, the buyer pays a buyer's premium for the individual items as well as the other amounts described below if the conditions for these are applicable. The total amount that the buyer pays to BRK is called the "purchase price".

7.1.1 Buyer's Premium: The hammer price always includes an additional fee to BRK. At the live auctions, the fee is 24% of the hammer price + VAT of the fee, 30% in total. For stamps and coins, the fee is 20% of the hammer price + VAT of the fee, a total of 25%.

7.1.2 "LIVE Bidding": BRK's own "LIVE Bidding" software is free to use for bidders on bruun-rasmussen.dk. If a "LIVE Bidding" software from a third party is used, an additional 3% (including VAT) is added to the buyer's premium. The added fee is transferred to the third party in its entirety.

7.1.3 Full VAT: Certain items are sold at auction in accordance with the current rules regarding full VAT. In such a situation, a VAT of 25% is imposed on both the hammer price and the buyer's premium. These items are marked in the catalogue and on bruun-rasmussen.dk with the symbol "*", or with the text: "This item is subject to full VAT".

7.1.4 Artist's Resale Right: In accordance with Danish copyright law, a royalty fee covering the Artist's Resale Right has to be charged for works by newer Danish artists, and some foreign artists, who are either alive or have not been dead for more than 70 years. The royalty fee covering the Artist's Resale Right is charged on behalf of VISDA (Visual Rights Denmark). These works are marked "ARR" in the printed catalogue, and on bruun-rasmussen.dk the description of the works includes the text: "This lot is subject to the Artist's Resale Right". The royalty fee covering the Artist's Resale Right is added to the hammer price + the buyer's premium (excluding VAT) if the amount exceeds EUR 300, as indicated below:

Hammer price + buyer's premium (ex. VAT)	Payment Rate
300,01 - 50,000 euro	5%
50,000,01 - 200,000 euro	3%
200,000,01 - 350,000 euro	1%
350,000,01 - 500,000 euro	0.5%
over 500,000 euro	0.25%

The royalty fee covering the Artist's Resale Right cannot exceed EUR 12,500 (excluding VAT) for each item. The fee must be paid in Danish kroner, and the conversion rate (EUR/DKK) is set by VISDA.

7.1.5 Debit/Credit Card Fee: Amounts Added to the Hammer Price: BRK reserves the right to charge the debit/credit card fees imposed by the payment services companies. The rates will appear when bidding on bruun-rasmussen.dk and at payment.

8 PAYMENT DEADLINE

8.1 The purchase price falls due after the hammer price has been determined, and then the buyer has eight days to pay BRK the purchase price.

9 PAYMENT METHODS

9.1 The payment can be made in the following ways:

A: With debit/credit card (Visa, MasterCard, Maestro, Diners

Club, China UnionPay and JCB) or cash (up to DKK 19.999) in the saleroom or subsequently at one of BRK's locations. Please note that we do not accept EUR 500 banknotes.

B: With debit/credit card (Dankort, Visa, MasterCard, Diners Club and JCB) via BRK's website on the buyer's personal page.

C: By bank transfer into BRK's account with Danske Bank: 4183 4310970638 · Swift/BIC: DABADKKK · IBAN: DK4130004310970638.

10 VAT EXEMPTION, PAYMENT & DEPOSIT

10.1 Some buyers can choose which type of VAT should apply to the transaction. The choice has to be communicated to BRK no later than two working days after the purchase and cannot be changed subsequently.

A: Businesses in Denmark registered for VAT can decide that the transaction is to be conducted in accordance with the rules for full VAT, see paragraph 7.1.3.

B: Businesses registered for VAT in another EU Member State can be exempted from paying Danish VAT if it can be proved that the item has been transported to the foreign address that the buyer has registered with BRK and which is written on the invoice. In such cases, the VAT should be settled according to the rules applicable in the country where the buyer is registered for VAT. It is advisable to consult with the local authorities. The buyer can decide not to be exempt from regular VAT and instead pay Danish VAT on second-hand goods/full VAT.

C: Buyers residing outside the EU can be exempted from Danish VAT if it can be proved that the item has been transported out of the EU. To the extent possible and for a fee, BRK can issue the necessary export documents for the customs authorities. The buyer may decide not to be exempt from regular VAT and instead pay Danish VAT on second-hand goods/full VAT.

10.2 Companies registered for VAT in another EU Member State and buyers residing outside the EU must deposit the Danish VAT on the amount invoiced with BRK until the export process has been completed in a documented, lawful fashion. If the export is undertaken by one of BRK's authorized forwarding agents, the VAT does not have to be deposited. See the list of authorized forwarding agents on bruun-rasmussen.dk.

11 OVERDUE PAYMENTS

11.1 If payment is made after a deadline, including the deadline specified in paragraph 8, interest on overdue payments will be charged and estimated in accordance with the Danish Central Bank's official lending rate + 8% per year on the amount due.

11.2 If the purchase price, including interest, has still not been paid ten days after the demand for payment has been made, BRK is entitled to seek the purchase price paid by making a set-off against the deposit/by drawing on the bank guarantee or to cancel the purchase.

11.3 If the purchase is cancelled, BRK is entitled to sell the item at a new auction and demand the costs and any difference between the new and the earlier hammer price (including the buyer's premium) covered by the defaulting buyer.

11.4 In addition to debt collection, BRK may seek recovery of all due claims (including costs) not paid in a timely manner in the following ways:

A: Making the buyer cover the costs of selling items consigned to auction by or on behalf of the buyer. The sale can be conducted without regard to an agreed reserve price. Items consigned for auction cannot be collected as long as overdue debts are unpaid.

B: Seizing the buyer's remaining balance with BRK, including the balance from the sale of items consigned by or on behalf of the buyer, regardless of whether such receivables derive from auction sales prior to or after the date of the buyer's default on the payment.

12 PICK-UP & COLLECTION

12.1 The title to a purchased item passes to the buyer when the full purchase price, including any interest and fees, has been paid, and only then can the collection of an item take place.

12.2 In connection with the collection of a purchased item, BRK reserves the right to demand satisfactory documentation that the person who wants to pick up the item is either the buyer himself/herself or authorized by the buyer to receive the item on his/her behalf.

12.3 The collection of certain weapons requires presentation of a valid weapons certificate. Items with such requirements are listed with the text: "The purchase of this item requires the presentation of a valid weapons certificate" in the catalogue and on bruun-rasmussen.dk.

12.4 Purchased items are stored after the auction at the buyer's expense and risk. Pick-up must take place no later than eight working days after the last auction day.

12.5 If the item(s) is/are not picked up on time, the purchased items will be transported to a warehouse at the buyer's risk and expense. The transport costs are DKK 150 including VAT per item and the storage costs are DKK 150 including VAT per item for each week or part of a week. If an item is left unclaimed for an amount of time that results in the storage costs exceeding the value of the item, BRK will be entitled to, at the buyer's expense and risk and without regard to the reserve price, sell the item at an auction or privately. The buyer is still liable for the costs of transportation and storage not covered by such sale.

12.6 In accordance with current anti-money laundering laws, the buyer must in certain cases submit personal information and present a photo ID to BRK before the buyer can have the purchased item placed in his possession.

13 SHIPPING

13.1 If the buyer is unable to pick up the purchased item, BRK offers to pack and arrange delivery either by mail or by freight forwarder at the buyer's risk and expense. See paragraph 12.2 regarding identification.

14 EXPORT LICENSE

14.1 To ensure that Danish cultural heritage of vital importance remains in Denmark, the Danish Cultural Assets Commission can place an export ban on certain items. If the buyer wishes to export an item that is subject to an export ban in Denmark, the purchase will be cancelled and the Danish Cultural Assets Commission is obliged to acquire ownership of the item for the price obtained at auction. The buyer cannot raise any claims against BRK as a result of an export ban.

14.2 Certain items are included in the Washington Convention, also known as CITES. The purpose of CITES is to stop the trade of items made with endangered species and flora. If the item is included in the Washington Convention, CITES, Appendix 1, this will appear in the description of the item on bruun-rasmussen.dk and be marked with the symbol "☉" in the catalogue. The following rules are applicable:

A: Items that are included in the Washington Convention, CITES, Appendix 1, can only be traded when a dispensation in the form of a CITES certificate has been obtained. BRK obtains the required certificate from the Danish Nature Agency that allows trade and export to countries within the EU. Items that were produced before 1947 can, however, be freely traded within the EU without a certificate.

B: It is only items included in the Washington Convention, CITES, Appendix 1 that are marked individually on bruun-rasmussen.dk and in our catalogue. Items included in the Washington Convention, CITES, Appendix 2, which can be freely sold and transported within the EU, are not individually marked.

C: Export to countries outside the EU must, regardless of the year of the item's production, always procure a CITES re-export permit from the Danish Nature Agency if the item is included in the Washington Convention, Appendix 1 and 2. This export permit can usually be

obtained without problems, if the item is either sold with a CITES certificate or was made prior to 1947. Appendix 2 items usually also receive a re-export permit without problems. Any fees charged by the Danish authorities in connection with the issuance of a re-export permit will be added to the buyer's invoice.

D: In connection with export to other countries outside the EU, special rules may apply concerning the subsequent import, and the buyer is encouraged to consult the relevant local authorities about this issue.

15 DEFECTS IN THE PURCHASED ITEMS

15.1 The lack of conformity rules of the Danish Sale of Goods Act may apply. Below is a non-exhaustive excerpt of the buyer's remedies in regard to lack of conformity.

15.2 The buyer is entitled to cancel a purchase if the description contained significant errors that have led to a higher hammer price than a correct description would have resulted in. In such cases, the total purchase price will be refunded. The buyer cannot demand payment of interest on the purchase price or demand payment of any other expenses or losses.

15.3 A purchase cannot be cancelled and the buyer cannot demand a refund of the purchase price or raise any other claims against BRK if the description of the item is in compliance with paragraph 15.2. The same applies if evidence of forgery has required the use of scientific methods that were either not available at the time of sale, were excessively costly to use or led to the damage of the item in question.

15.4 Claims for a cancellation of a purchase must be notified to BRK when the buyer has discovered the fact that entitles the buyer to cancel the purchase. This notice, however, has to be given no later than two years after the final pick-up date according to paragraph 12.4. The item purchased must be returned to BRK in the same condition as it was on the day it was sold at auction. If these conditions are not met, the buyer loses the right to cancel the purchase and cannot claim a refund of the purchase price. The buyer is responsible for paying the costs associated with the return of the item.

16 OBJECTIONS & LIMITATIONS OF LIABILITY

16.1 BRK is aware that errors, technical difficulties and external abuse or disruptive influences may occur during the auction. Bidders cannot raise any claims against BRK as a result of such events.

16.2 The buyer is always responsible for the correct payment of VAT and other costs, fees etc. in accordance with Danish and foreign regulations.

16.3 Unless otherwise stated in these conditions of purchase, BRK may never be held liable for bidders'/buyers' operating loss, loss of profits, other indirect losses or consequential loss.

17 PRIVACY POLICY

17.1 It is important to BRK to ensure confidentiality and security regarding the bidder's/buyer's personal information. The privacy policy can be found on bruun-rasmussen.dk.

18 COMPLAINTS, DISPUTE RESOLUTION AND APPLICABLE LAW

18.1 BRK can always be contacted if the bidder/buyer has a complaint.

18.2 If the dispute cannot be resolved, the consumer can submit a complaint to the Complaint Resolution Centre, Nævnenes Hus, Toldboden 2, 8800 Viborg, Denmark, email: naevne-neshus.dk. Consumers residing in another EU country than Denmark can submit their complaint to the European Commission's Online Dispute Resolution platform via the website: <http://ec.europa.eu/odr>.

18.3 In Denmark, disputes must be brought before the City Court of Copenhagen, but see paragraphs 18.2. The mandatory rules on jurisdiction apply to consumer interests.

Jesper Bruun Rasmussen, Auctioneer

The above is an English translation of the Danish version of the Conditions of Purchase. In case of a dispute, only the Danish version of the present Conditions of Purchase of Bruun Rasmussen is valid.

Rev. 10.21

ADDRESSES

BRUUN RASMUSSEN AUCTIONEERS

COPENHAGEN – BREDGADE

BREDGADE 33
DK-1260 COPENHAGEN K
Tel +45 8818 1111
E-mail: info@bruun-rasmussen.dk

COPENHAGEN – SUNDKROGSGADE

SUNDKROGSGADE 30
DK-2150 NORDHAVN
Tel +45 8818 1111
E-mail: info@bruun-rasmussen.dk

GLOSTRUP

PAUL BERGSØES VEJ 20B
DK-2600 GLOSTRUP
Tel +45 8818 1111
E-mail: info@bruun-rasmussen.dk

AARHUS

SØREN FRICHS VEJ 34D
DK-8230 ÅBYHØJ
Tel +45 8818 1100
E-mail: aarhus@bruun-rasmussen.dk

FYN

NICK MESSMANN
Tel +45 8818 1232
E-mail: nic@bruun-rasmussen.dk

ONLINE AUCTIONS – SUPPORT

BRUUN-RASMUSSEN.DK
Tel +45 8818 1114
E-mail: support@bruun-rasmussen.dk

REPRESENTATIVES:

FRANCE & BELGIUM
DITTE HERBORG KROGH · PARIS
Tel +33 6 6185 4564
E-mail: dhk@bruun-rasmussen.dk

SOUTHERN FRANCE & LUXEMBOURG

PETER KOCH
Tel +45 4045 3403
E-mail: p.koch@bruun-rasmussen.dk

GERMANY

NICK MESSMANN
Tel +45 8818 1232
E-mail: nic@bruun-rasmussen.dk

SPAIN

VAGN ERIK KROGSØE
Tel +45 2445 1224
E-mail: vek@bruun-rasmussen.dk

THAILAND

ANDERS NORMANN
Tel +66 818 177 273
E-mail: normann@bruun-rasmussen.dk

UNITED KINGDOM

ANNA GRUNDBERG · LONDON
Tel +44 7976 554 439
E-mail: agr@bruun-rasmussen.dk

USA

SANDRA SEPTIMIUS · NEW YORK
Tel +1 718 764 7601
E-mail: ss@bruun-rasmussen.dk
BENEDICTE HALLOWELL
Tel and Fax +1 617 566 7333
E-mail: b.hallowell@bruun-rasmussen.dk

CONTACT DIRECTLY

KONTAKT DIREKTE

HOVEDNUMMER / MAIN NUMBER

Bruun Rasmussen Auctioneers +45 8818 1111

ADMINISTRATION

Jakob Dupont, CEO +45 8818 1081
dupont@bruun-rasmussen.dk

KUNDESERVICE / CUSTOMER SERVICE

kundeservice@bruun-rasmussen.dk +45 8818 1010
customerservice@bruun-rasmussen.dk +45 8818 1010

KOMMISSIONER / COMMISSIONS

Lise Winther Wobido +45 8818 1013
Anja Bering Hansen +45 8818 1028
bids@bruun-rasmussen.dk

BESTILLING AF KATALOGER / CATALOGUE REQUESTS

Kundeservice / Customer service +45 8818 1111

AUKTIONS RÅDGIVNING / AUCTION GUIDANCE

Franziska Kampmann +45 8818 1026
fka@bruun-rasmussen.dk

SHIPPING

shipping@bruun-rasmussen.dk +45 8818 1055

VURDERING OG INFORMATION / VALUATION AND INFORMATION

INDBOVURDERINGER / VALUATION AT YOUR HOME
David Utzon-Frank +45 8818 1221
duf@bruun-rasmussen.dk

Kasper Nielsen +45 8818 1121
kn@bruun-rasmussen.dk

Hans Ruben +45 8818 1231
hru@bruun-rasmussen.dk

Ralph Lexner +45 8818 1161
rl@bruun-rasmussen.dk

Liselotte Toxværd Møller +45 8818 1234
ltm@bruun-rasmussen.dk

ARMBÅNDSURE / WRISTWATCHES

Vilhelm Islandi Bramsen +45 8818 1239
vib@bruun-rasmussen.dk

BØGER / BOOKS

Lærke Bøgh +45 8818 1217
lb@bruun-rasmussen.dk

FRIMÆRKER / STAMPS

Christian Grundtvig +45 8818 1214
cg@bruun-rasmussen.dk

MØNTER / COINS

Michael Fornitz +45 8818 1201
mfo@bruun-rasmussen.dk

MODERNE DESIGN / MODERN DESIGN

Peter Kjølgaard Jensen +45 8818 1191
pkj@bruun-rasmussen.dk

MODERNE KUNST / MODERN ART

Niels Raben +45 8818 1181
nr@bruun-rasmussen.dk

Niels Boe-Hauggaard +45 8818 1182
nbh@bruun-rasmussen.dk

MODERNE SØLV / MODERN SILVER

Amalie Hansen +45 8818 1194
amh@bruun-rasmussen.dk

PORCELÆN, GLAS OG ASIATISK KUNST / CERAMICS, GLASS AND ASIAN ART

Ralph Lexner +45 8818 1161
rl@bruun-rasmussen.dk

Charlotte Hviid +45 8818 1162
chv@bruun-rasmussen.dk

RUSSISK KUNST / RUSSIAN ART

Martin Hans Borg +45 8818 1128
mhb@bruun-rasmussen.dk

SMYKKER / JEWELLERY

Katrin Mikkelsen Sørensen +45 8818 1174
kms@bruun-rasmussen.dk

TÆPPER / CARPETS

Henrik Schleppegrell +45 8818 1145
hsc@bruun-rasmussen.dk

VIN / WINE

Thomas Rosendahl Andersen +45 8818 1206
tra@bruun-rasmussen.dk

VÅBEN / WEAPONS

David Utzon-Frank +45 8818 1221
duf@bruun-rasmussen.dk

ÆLDRE KUNST / FINE ART

Julie Arendse Voss +45 8818 1123
jav@bruun-rasmussen.dk

Birte Stokholm +45 8818 1122
bst@bruun-rasmussen.dk

ÆLDRE MØBLER / FURNITURE

Anders Fredsted +45 8818 1142
afr@bruun-rasmussen.dk

Henrik Schleppegrell +45 8818 1145
hsc@bruun-rasmussen.dk

ÆLDRE SØLV / SILVER

Heidi Schophuus Jensen +45 8818 1163
hsj@bruun-rasmussen.dk

COMMISSION BIDS

KOMMISSIONSBUD

It is possible to leave commission bids if you can not be present at the auction yourself. This service is free of charge.

When leaving a commission bid, you are instructing our customer service to bid up to a specified amount on your behalf.

The situation can occur that another buyer has already bid the same as you were prepared to. Are you then willing to bid further? If not the lot will be sold to another buyer.

If you do not wish to exceed your bid then write "Max", for maximum, next to the amount. You can also allow us to raise your bid by approx. 15% or approx. 25%.

The hammer price may be higher or lower than the estimated price, so it is possible to buy below the estimate. Bruun Rasmussen will always buy at the lowest price possible, as if you yourself had been present at the auction.

All commission bids are strictly confidential.

Commission bids must be submitted no later than **24 hours** prior to the start of the auction.

HOW TO MAKE A COMMISSION BID:

Complete the commission form with all pertinent information.

Indicate the lot number.

Indicate the amount you are prepared to bid.

Should this amount be the absolute maximum, please write "Max" in the appropriate column.

You can also allow us to bid by up to approx. 15% or approx. 25% more by indicating so.

Sign the commission form and make sure that Bruun Rasmussen receives it **24 hours** prior to the start of the auction.

If the information should be insufficient, Bruun Rasmussen can abstain from bidding. Bruun Rasmussen can not be held responsible for error in bidding or failure to execute bids.

INTERNET:

Commission bids can be submitted via website bruun-rasmussen.dk directly from the page with the item you want to submit a bid for.

Deadline for submissions of bids via the website is **3 hours** prior to the start of the auction.

Submitted bids are shown under "Your bids" when you are logged in. Please contact technical support on +45 8818 1114 for questions about the registration and submission of bids on the website.

For additional information, please consult "Conditions of Purchase" §1.

TELEPHONE BIDDING:

Should you wish to bid at auction by telephone, please inform Bruun Rasmussen of your name and telephone number, as well as which catalogue numbers you are interested in, no later than **3 hours** prior to the start of the auction. You will then be contacted shortly before the relevant lot comes under the hammer, thereby allowing you to participate without being in the auction room yourself.

For additional information, please consult "Conditions of Purchase" §1.

Det er muligt at afgive kommissionsbud, hvis De ikke selv kan være til stede på auktionens dag. Denne service er gratis.

Når De afgiver en kommission, beder De vores kundeservice på Deres vegne byde op til et af Dem bestemt beløb i hammerslag.

Der kan opstå den situation, at en anden køber allerede har budt det beløb, som De ønsker at afgive. Er De da villig til at gå et bud højere eller er De indforstået med at nummeret sælges til anden side?

Ønsker De ikke at byde højere så skriv "Max" ud for beløbet. Er De i tvivl om hvor højt De vil byde, kan De hæve budet med op til ca. 15% eller ca. 25%.

Salgsprisen kan blive højere eller lavere end vurderingen, så der er også mulighed for at købe til under den angivne vurdering. Vor kundeservice køber altid så billigt som muligt til Dem, som havde De selv været tilstede på auktionen.

Alle kommissioner behandles strengt fortroligt.

Kommissionsbud skal være Bruun Rasmussen i hænde senest **24 timer** før auktionens start.

SÅDAN BYDER DE:

Udfyld blanketten kommissionsbud med alle oplysninger.

Angiv katalognummer.

Angiv beløbet De ønsker at byde.

Er dette Deres absolutte maximum bedes De anføre "Max" i kolonnen.

De kan også forhøje Deres bud med henholdsvis ca. 15% eller ca. 25%, ved at indikere dette i kolonnen.

De bedes underskrive kommissionsblanketten og sikre Dem, at Bruun Rasmussen modtager den senest **24 timer** før auktionens start.

Hvis Deres oplysninger ikke er tilstrækkelige, kan Bruun Rasmussen undlade at byde for Dem, ligesom Bruun Rasmussen ikke kan gøres ansvarlig for fejl ved budgivningen.

INTERNET:

Kommissionsbud kan afgives på hjemmesiden bruun-rasmussen.dk direkte fra siden med den effekt, De ønsker at byde på.

Seneste afgivelse af bud via hjemmesiden er **3 timer** før auktionens start.

Afgivne bud kan ses på hjemmesiden under "Deres bud", når de er logget ind. Kontakt teknisk support på 8818 1114 for spørgsmål om registrering og budgivning via internettet.

For yderligere information, se "Købskonditioner", §1.

TELEFONBUD:

Såfremt De ønsker at byde pr. telefon, bedes De oplyse Bruun Rasmussen Deres navn og telefonnummer samt hvilke katalognumre, De ønsker at byde på, senest **3 timer** før auktionens start. De vil så blive ringet op kort før, den aktuelle vare kommer under hammeren, og De kan på denne måde deltage i auktionen uden selv at være til stede.

For yderligere information, se "Købskonditioner" på bruun-rasmussen.dk under "Guide".

COMMISSION BIDS

KOMMISSIONSBUD

BREDGADE

Skal være Bruun Rasmussen i hænde senest **24 timer** før auktionens start.
Must be submitted no later than 24 hours prior to the start of the auction.

AUKTION NR AUCTION NO: **905**

Navn *Name*: *

Adresse *Address*: *

Postnr./by *City*: *

Land *Country*: * Fax:

Tel: *

e-mail: CVR-nr. *VAT No.*:

Bank: Konto nr. *Acct. No.*:

Adresse *Address*:

Postnr./By *City*: Land *Country*:

Tel: Kontaktperson *Contact*:

Obligatoriske felter er mærket med en stjerne * *Mandatory fields are marked with an asterisk **

Undertegnede giver hermed fuldmagt til Bruun Rasmussen Kunstauktioner A/S om på mine vegne at købe nedennævnte katalognumre så fordelagtigt som muligt, inden for det af mig anførte beløb, i hammerslag.
I hereby request that Bruun Rasmussen bid on my behalf on the following lots up at the prices indicated below.

Undertegnede har udfyldt ovennævnte med de ønskede oplysninger, samt har accepteret købskonditionerne.
The undersigned has supplied the required information and agrees to be bound by the conditions of purchase.

Signatur: * B.R. kunde-nr. *Client No.*:

Jeg ønsker at modtage salgsresultater på de emner jeg har budt på via email dagligt efter auktion
I wish to receive sales results on the items I have been bidding on via e-mail every day after the auction

på e-mail adressen *on this e-mail address*:

Katalog nr. Lot. No.	Beskrivelse Description	Bud kr. Bid DKK	Max	+15%	+25%

BRUUN RASMUSSEN KUNSTAUKTIONER A/S

Bredgade 33 · DK-1260 København K · Tel +45 8818 1111 · Fax +45 8818 1112 · bids@bruun-rasmussen.dk · bruun-rasmussen.dk

Fortsættes næste side *Please turn over*





MODERN