

FINE ART + ANTIQUES

Live Auction 891

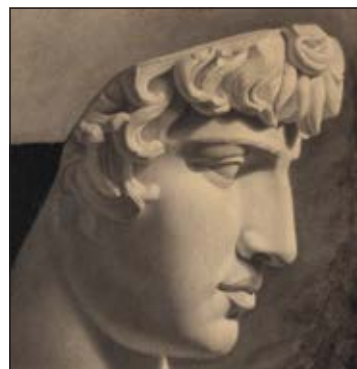


BRUUN RASMUSSEN

AUCTIONEERS OF FINE ART

FINE ART + ANTIQUES

Live Auction 891



AUCTION

26 - 29 November 2019

PREVIEW

Thursday	21 November	3 pm - 7 pm
Friday	22 November	11 am - 5 pm
Saturday	23 November	11 am - 4 pm
Sunday	24 November	11 am - 4 pm
Monday	25 November	11 am - 5 pm

or by appointment



BRUUN RASMUSSEN

AUCTIONEERS OF FINE ART

Bredgade 33 · DK-1260 Copenhagen K · Tel +45 8818 1111
info@bruun-rasmussen.dk · bruun-rasmussen.com





DAYS OF SALE

AUCTION 891

Tuesday	26 November		
	4 pm	Paintings, drawings and sculptures	1 - 154
Wednesday	27 November		
	3 pm	Furniture, clocks, bronzes and carpets	155 - 324
		Silver, glass and ceramics	325 - 372
	6 pm	Wristwatches	373 - 445
Thursday	28 November		
	4 pm	Jewellery and handbags	446 - 653
Friday	29 November		
	2 pm	Asian Art	701 - 781
	3:30 pm	Russian Art	801 - 851

AUCTION 892 - SEPARATE CATALOGUE

Monday	2 December		
	2 pm	Prince Henrik's Collection: African masks and sculptures Oriental jade	884 - 1023 1024 - 1177

AUCTION 891

Tuesday	3 December		
	4 pm	Silver and ceramics Furniture, lamps and carpets	
Wednesday	4 December		
	4 pm	Paintings and sculptures	
Thursday	5 December		
	2 pm	Paintings, sculptures and prints	

DEADLINE FOR CLAIMING ITEMS: WEDNESDAY 18 DECEMBER

Items bought at this auction must be paid no later than eight days from the date of the invoice and claimed at Bredgade 33 by Wednesday 18 December at the latest. Otherwise, they will be moved to Bruun Rasmussen's storage facility at Baltikavej 10 in Copenhagen at the buyer's expense and risk. This transportation will cost DKK 150 per item VAT included, and storage will cost DKK 150 per item per week VAT included.



MALERIER + ANTIKVITETER

Traditionel Auktion 891



AUKTION

26. - 29. november 2019

EFTERSYN

Torsdag	21. november	kl. 15 - 19
Fredag	22. november	kl. 11 - 17
Lørdag	23. november	kl. 11 - 16
Søndag	24. november	kl. 11 - 16
Mandag	25. november	kl. 11 - 17

or by appointment



BRUUN RASMUSSEN

KUNSTAUKTIONER

Bredgade 33 · 1260 København K · Tel +45 8818 1111
info@bruun-rasmussen.dk · bruun-rasmussen.dk





AUKTIONSKALENDER

AUKTION 891

Tirsdag	26. november		
	kl. 16	Malerier, tegninger og skulpturer	1 - 154
Onsdag	27. november		
	kl. 15	Møbler, bronzer, ure og tæpper	155 - 324
		Sølv, glas og keramik	325 - 372
	kl. 18	Armbåndsure	373 - 445
Torsdag	28. november		
	kl. 16	Smykker og tasker	446 - 653
Fredag	29. november		
	kl. 14	Asiatisk kunst og kunsthåndværk	701 - 781
	kl. 15.30	Russisk kunst og kunsthåndværk	801 - 851

AUKTION 892 - SEPARAT KATALOG

Mandag	2. december		
	kl. 14	Prins Henriks samling: Afrikanske masker og skulpturer	884 - 1023
		Orientalisk jadekunst	1024 - 1177

AUKTION 891

Tirsdag	3. december		
	kl. 16	Sølv og keramik Møbler, belysning og tæpper	
Onsdag	4. december		
	kl. 16	Malerier og skulpturer	
Torsdag	5. december		
	kl. 14	Malerier, skulpturer og grafik	

SIDSTE FRIST FOR AFHENTNING: ONSDAG DEN 18. DECEMBER

Genstande købt på denne auktion skal være betalt senest otte dage efter fakturadatoen og afhentet i Bredgade 33 senest onsdag den 18. december. I modsat fald bliver de transporteret til Bruun Rasmussens lager på Baltikavej 10 i Københavns Nordhavn for købers regning og risiko. Transporten koster 150 kr. pr. genstand inkl. moms, og opbevaringen koster 150 kr. pr. genstand pr. påbegyndt uge inkl. moms.



Invitation to the Opening of the Preview

Thursday 21 November between 2-7 pm

Join us as we open the doors to our impressive preview in Copenhagen. The festive day will be a celebration of art and culture, where you can both experience the highlights of our upcoming Live Auction and learn more about the interesting story behind one of the masterpieces set to go under the hammer.

2 pm: opening presentation

(please note that this presentation will be held in English)

We open the day at 2 pm in the saleroom.

Here MaryAnne Stevens, former curator and Director of Academic Affairs at the Royal Academy of Arts in London, will give the opening presentation

*"Vilhelm Hammershøi: Visual Poet and Modernist Painter
– an Introduction to Hammershøi's Quiet and Enigmatic Interiors with a Special Emphasis on "Interior, Strandgade 30"*

The presentation is a unique opportunity to learn more about Vilhelm Hammershøi's iconic interior paintings, which have brought him so much acclaim in the international art world.

3 pm: opening of the preview

After the presentation, we invite you to enjoy the rest of the preview.

Here you can go exploring among the fantastic selection of exquisite works of art, stylish design classics, historical antiques, sparkling jewellery and exclusive wristwatches.

You can also enjoy a glass of wine to the tunes of the musician Christian d'Or, who will play a DJ set with vinyl records during the preview.

During the day there will also be ample opportunity to have a conversation with our specialists about the art objects up for auction.

The highlights include five works by Vilhelm Hammershøi, two splendid bureau cabinets of the very finest quality, groundbreaking designs by Kaare Klint, paintings by the classic Danish modernists as well as artwork and decorated art from Asia and Russia.

Finally, you can also get a closer look at Prince Henrik's extensive collection of masks and sculptures from Africa as well as jade art from Asia.

Everyone is welcome at the opening – we hope to see you in Copenhagen!

SPECIALISTS IN FINE ART AND ANTIQUES



Paintings
Julie Arendse Voss
+45 8818 1123
jav@bruun-rasmussen.dk



Paintings
Birte Stokholm
+45 8818 1122
bst@bruun-rasmussen.dk



Paintings
Søren K. Holmstrup
+45 8818 1127
skh@bruun-rasmussen.dk



Jewellery
Katrin Mikkelsen Sørensen
+45 8818 1174
kms@bruun-rasmussen.dk



Jewellery and handbags
Lise Jacobsen
+45 8818 1175
lij@bruun-rasmussen.dk



Wristwatches
Henrik Jørgensen
+45 8818 1168
hj@bruun-rasmussen.dk



Wristwatches - Aarhus
Esben Skov Jensen
+45 8818 1199
ej@bruun-rasmussen.dk



Asian art and wristwatches
Vilhelm Islandi Bramsen
+45 8818 1239
vib@bruun-rasmussen.dk



Asian art
Ralph Lexner
+45 8818 1161
rl@bruun-rasmussen.dk



Ceramics
Charlotte Hviid
+45 8818 1162
chv@bruun-rasmussen.dk



Silver and pocket watches
Heidi Schophuus Jensen
+45 8818 1163
hsj@bruun-rasmussen.dk



Ceramics
Alexandra Nilsson
+45 8818 1164
ani@bruun-rasmussen.dk



Ceramics
Line Hjorth Langkjær
+45 8818 1166
lla@bruun-rasmussen.dk



Ceramics
Torben Friis Møller
+45 8818 1165
tfm@bruun-rasmussen.dk



Furniture, bronzes and clocks
Anders Fredsted
+45 8818 1142
afr@bruun-rasmussen.dk



Furniture and carpets
Henrik Schleppegrel
+45 8818 1145
hsc@bruun-rasmussen.dk



Director of sales
Kasper Nielsen
+45 8818 1121
kn@bruun-rasmussen.dk



International relations
Frederik Bruun Rasmussen
+45 8818 1003
fbr@bruun-rasmussen.dk



Silver and branding
Alexa Bruun Rasmussen
+45 8818 1091
alexa@bruun-rasmussen.dk



Shipping
Tina Bavnbej Jepsen
+45 8818 1056
tbj@bruun-rasmussen.dk



Representative France + Belgium
Ditte Herborg Krogh
+33 6 6185 4564
dhk@bruun-rasmussen.dk



Representative Sweden
Anna Sievert
+46 72 253 98 16
asi@bruun-rasmussen.dk



Representative United Kingdom
Anna Grundberg
+44 7976 554 439
agr@bruun-rasmussen.dk



Representative USA
Sandra Septimius
+1 718 764 7601
ss@bruun-rasmussen.dk

Åbningsforedrag

Torsdag 21. november

Kl. 14: "Vilhelm Hammershøi: Visuel poet og modernistisk maler
– en introduktion til Hammershøis stille og gådefulde interiører med særligt fokus på
"Interiør fra Strandgade 30"

ved *MaryAnne Stevens,*

kunsthistoriker og kurator på The Royal Academy of Arts i London,

hvor hun i 2008 stod bag udstillingen "Vilhelm Hammershøi: The poetry of silence".

(foregår på engelsk)

Kl. 15-19: Producer, sanger og DJ Christian d'Or
spiller et DJ-sæt på vinyl med musik fra de seneste 40 år.

Gallery Talk

Fredag 22. november

Kl. 15: "Et kongeligt dansk rokokochatol"

ved *Ida Rosenstand Klahn,*

ph.d. og afdelingschef på Museum Nordsjælland.

Kl. 16: Kunsthistoriker Peter Kær fortæller om sit arbejde med årets filmede Kunstkalendarer,
der tager afsæt i Anna Anchers markante værk "En begravelse" fra 1891.

Lørdag 23. november

Kl. 12: "Forum Romanum i 1800-tallet. En imponerende italiensk mikromosaik"

ved *ekspert i kunsthåndværk Alexandra Nilsson.*

Kl. 14: "Kaare Klint på Estruplund – et enestående og unikt møblement fra 1916"

ved *designekspert Peter Kjølgaard.*

Søndag 24. november

Kl. 12: "Udsøgte værker fra den danske modernisme ca. 1915-30"

ved *eksperter i moderne kunst Kathrine Eriksen og Niels Boe-Hauggaard.*

Kl. 14: Oldemand og smykkedesigner Diana Holstein
fortæller om guldsmedelaugets virke samt om "Smykkernes by"
og Bruun Rasmussens medvirken i denne kulturbegivenhed.

Mandag 25. november

Kl. 15.30: Forhenværende museumsdirektør for Varde-museerne, Ole Faber,
fortæller om sit monumentale opslagsværk "Leksikon over danske kunstnersignaturer".

Der er mulighed for at erhverve et signeret eksemplar af bogen.

(foregår alle på dansk)

Masterpiece by Hammershøi and a Royal Rococo Bureau Cabinet

The centrepiece of this auction is the painter Vilhelm Hammershøi and his artwork. If you leaf through the older Bruun Rasmussen catalogues, from when we started in 1948 and up until today, you will see that over the years we have sold almost 200 oil paintings by the artist, which is more than any other auction house. For many years, Hammershøi was only admired by a fairly small circle of people, and his paintings were sold and bought at modest prices. At this auction, however, we hope to achieve the highest price ever for a work by Hammershøi with a very fine interior from his private home in Strandgade 30, which has been estimated at a price of DKK 20-30 million. It contains the simplicity and most of the details that one appreciates about his paintings: his wife Ida, a white, profiled door and a paned window that allows the light to shine through and settle on the floor. Everything is kept in the characteristic white, grey and black nuances that are characteristic of the artist. The auction contains four other works by Hammershøi, including a smaller interior painting from Strandgade 25, an academy study of a plaster cast, a portrait of his brother Svend Hammershøi and a study with a female nude. The latter was painted in 1886 while Hammershøi studied under the Skagen painter P.S. Krøyer at Kunstnerens Frie Studieskoler (The Free School of Study for Artists) in Copenhagen. The teacher wrote the following about his student: "I have a student who paints quite peculiarly. I do not understand him, believe that he will become significant, am trying not to influence him." Hammershøi did develop into a unique artist within the history of art, and Danish artists such as Carl Holsøe and Peter Ilsted were inspired by him in their own interior paintings. The diametrical contrast to Hammershøi's "quiet living rooms" can be found with the Swedish painter Oscar Björck and his lively depiction from 1889 of four happy children gathered around a table (cat. no. 36, 26, 14, 13 and 58).

The term "masterpiece" can also be applied to a Rococo bureau cabinet, which offers a fantastic backstory that has ties to the time of the absolute monarchs and the most lavish palaces of Northern Europe. The bureau cabinet is estimated at DKK 4-6 million and was made by the German Royal Cabinetmaker Dietrich Schäffer to the Danish Dowager Queen Sophie Magdalene around 1750. She commissioned it as a tribute of her love to her late husband, King Christian VI, and it ended up in her home at the Hirschholm Palace, which was located a little north of Copenhagen and considered the "Versailles of the North". The magnificent piece of furniture has a mirror cabinet covered with tortoiseshell and is made with the most beautiful inlays of various types of wood, brass, pewter and bone, whose motifs depict the royal couple in a religious context with the story of King Solomon and the Queen of Saba from the Old Testament. Also included in the auction is a precious Chinese export bureau cabinet of an equally high quality that was manufactured to the Danish market during the same period. The two bureau cabinets are among the finest furniture pieces from the 18th century we have ever sold at Bruun Rasmussen (cat. no. 166 and 174).

We also take a trip to Rome with a large 19th-century micro mosaic, which depicts the Roman Forum with the Pollux Temple, the Church of Santa Maria Antiqua and the Colosseum. If you are instead searching for the right Christmas gift, you should take a look at the auction's large selection of wristwatches and jewellery. The highlight is the coveted Patek Philippe wristwatch Nautilus designed by Gérald Genta. The waiting list is long for this one, and there are only about three people a year in Denmark, who get the opportunity to acquire this iconic wristwatch. Among the jewellery, we would like to draw attention to an incredibly beautiful "fancy pink" diamond ring that adorns the back of the catalogue and originates from the Argyle Diamond Mine in Australia. The famous mine will close down its production next year. Therefore, this type of diamond is already in very high demand (cat. no. 209, 398 and 485).

Welcome to the auction!



Jesper Bruun Rasmussen



Mesterværk af Hammershøi og et kongeligt rokokomøbel

På denne auktion er omdrejningspunktet maleren Vilhelm Hammershøi med i alt fem værker. Hvis man tager et kig i de gamle Bruun Rasmussen-kataloger, fra vi startede i 1948 og frem til i dag, vil man kunne se, at vi gennem årene har solgt lige ved 200 oliemalerier af kunstneren, hvilket er verdensrekord for et auktionshus. I mange år var Hammershøi kun beundret af en relativt lille kreds, og værkerne blev handlet til meget beskedne beløb. På denne auktion håber vi at kunne opnå den hidtil højeste pris for et værk af Hammershøi med et meget fint interiør fra hans private hjem i Strandgade 30 til en vurdering på 20-30 mio. kr. Det indeholder enkelheden og de fleste af de detaljer, som man apprecierer ved kunstnerens værker – fx hustruen Ida, en hvid dør med fyldninger og et vindue med sprosser, der lader lyset skinne igennem og aftegne sig på gulvet. Alt er holdt i de for kunstneren karakteristiske hvide, grå og sorte nuancer. Auktionens andre værker af Hammershøi tæller et mindre interiørmaleri fra Strandgade 25, en akademitegning udført efter en gipsafstøbning, et portræt af broren Svend Hammershøi og et studie med en nøgen kvindelig model, som Hammershøi malede i 1886, mens han var elev af skagensmaleren P.S. Krøyer på Kunstnernes Frie Studieskole i København. Denne lærermester skrev om sin elev: "Jeg har en Elev, som maler ganske løjerligt. Jeg forstaar ham ikke, tror, at han vil blive betydelig, søger ikke at indvirke på ham." Hammershøi udviklede sig da også til en ener i kunsthistorisk sammenhæng, og flere danske malere lod sig inspirere af ham. Det gælder Carl Holsøe og Peter Ilsted, som begge er kendt for deres interiørmalerier. Den diametrale modsætning til Hammershøis "stille stuer" finder man med den svenske maler Oscar Björck og hans livlige skildring af fire glade børn samlet omkring et bord fra 1889 (kat.nr. 36, 26, 14, 13 and 58).

Betegnelsen mesterværk kan også bruges om et rokokochatol, der byder på en fantastisk historie med linjer tilbage til de enevældige konger og Nordeuropas mest overdådige slotte. Chatollet er vurderet til 4-6 mio. kr. og er udført af den tyske hofsnedker Dietrich Schäffer til den danske enkedronning Sophie Magdalene omkring 1750. Hun bestilte det som en kærlighedshyldest til sin afdøde ægtefælle, kong Christian VI, og det kom til at stå i hendes hjem på Hirschholm Slot, der lå lidt nord for København og blev betragtet som "Nordens Versailles". Dette pragtmøbel har et spejlkabinet beklædt med skildpaddeskjold og er udført med de smukkeste indlægninger af forskellige træsorter, messing, tin og ben, hvis motiver skildrer kongeparret i en religiøs sammenhæng med fortællingen om kong Salomon og dronningen af Saba fra Det Gamle Testamente. Med på auktionen er også et kostbart kinesisk eksportchatol af lige så høj kvalitet, der blev fremstillet til det danske marked i samme periode. Chatollerne er blandt de fineste møbler fra 1700-tallet, som vi har haft på auktion hos Bruun Rasmussen (kat.nr. 166 and 174).

Vi tager også en tur til Rom med en stor mikromosaik fra 1800-tallet, der henter sit motiv fra Forum Romanum med Pollux-templet, kirken Santa Maria Antiqua og Colosseum. Er man derimod på udkig efter den rette julegave, bør man kaste et blik på auktionens store udvalg af armbåndsure og smykker. Højdepunktet er det eftertragtede armbåndsur Nautilus fra Patek Phillippe, der er designet af Gérald Genta. Ventelisten er lang i butikkerne – i alt er der kun ca. tre om året, der får mulighed for at erhverve et eksemplar af dette ikoniske armbåndsur i Danmark. Blandt smykkerne vil vi gerne henlede opmærksomheden på en utrolig smuk "fancy pink" diamantring, der pryder katalogets bagside og stammer fra Argyle-minen i Australien. Den berømte mine lukker næste år for udgravninger, hvorfor denne type diamanter er i særdeles høj kurs (kat.nr. 209, 398 and 485).

Velkommen!



Jesper Bruun Rasmussen



JEWELLERY AND HANDBAGS

Thursday 28 November 4 pm

Lot 446 - 653





446

GEORG JENSEN

A moonstone and opal necklace set with cabochon moonstones and opals, mounted in silver. Design no. 8. L. necklace app. 41 cm. L. pendant app. 4 cm. Georg Jensen, circa 1908.

Similar depicted in Janet Drucker, "Georg Jensen - A Tradition of Splendid Silver", p. 191. 1997.

DKK 8,000-10,000 / € 1,050-1,350

447

GEORG JENSEN

A opal brooch/belt buckle in the shape of a dragonfly set with cabochon opals, mounted in silver. Design no. 11. App. 4.5 x 7.5 cm. Georg Jensen, 1904-08.

Designed by Georg Jensen in 1903 prior to starting his company. Originally designed as a belt clasp, later turned into a brooch.

Art Nouveau jewelers, greatly influenced by depictions of nature in Japanese art, looked to the natural world for inspiration. Orchids, irises, lilies, ferns, snakes, dragonflies, and butterflies were all prevalent motifs in Art Nouveau jewelry.

"The work of the French jeweler René Lalique appears also to have inspired Jensen. The dragonfly silver belt clasp that Jensen designed in 1903 that features a highly realistic dragonfly amid floriforms adorned with opals is evocative of Lalique's style, and of French Art Nouveau generally. Certainly, Lalique's work could not have escaped Jensen's attention since it was often featured in the leading decorative arts magazine of the day, and examples were purchased and exhibited by the Danish Museum of Decorative Arts."

DKK 15,000 / € 2,000

448

ASTRID FOG

A bracelet of sterling silver. Design no. 193. L. app. 19 cm. Weight app. 153.5 g. Georg Jensen, after 1945.

Originally designed in 1969. DKK 8,000 / € 1,050



446



447



448



449

OLE LYNNGAARD

A double-strand pearl necklace with cultured pearls and an "Emeli" moonstone and diamond clasp set with an oval cabochon moonstone encircled by numerous brilliant-cut diamonds weighing a total of app. 0.48 ct., mounted in 18k gold and white gold. Colour: Wesselton (H). Clarity: VS. Pearl diam. app. 8.0-8.4 mm. L. app. 36-38 cm.

Accompanied by original case and certificate.

Retail price app. DKK 73,800.

DKK 10,000-15,000 / € 1,350-2,000

450 *

OLE LYNNGAARD

A pair of moonstone ear clips "Emeli" each set with an oval cabochon moonstone, mounted in 18k gold. L. app. 2.4 cm. Weight app. 28 g. (2)

DKK 8,000 / € 1,050

451

SHAMBALLA

A pair of sapphire ear pendants each with a bead set with numerous circular-cut sapphires weighing a total of 5.24 ct., mounted in 18k gold. Bead diam. app. 10 mm. L. app. 2 cm. (2)

Retail price app. DKK 52,000. DKK 15,000 / € 2,000

452

A diamond solitaire ring set with a brilliant-cut diamond weighing app. 1.10 ct., mounted in 14k gold. Colour: Top Cape (L). Clarity: VS. Size 54.

DKK 10,000-15,000 / € 1,350-2,000

453

CARTIER

A "Love" bangle of 18k gold. Size 17. Diam. app. 6 cm. Serial no. 576383. Weight app. 29.5 g.

Accompanied by screwdriver and two Cartier cases.

DKK 10,000-15,000 / € 1,350-2,000

454

GEORG JENSEN & WENDEL

A bracelet of 18k gold. L. app. 20.5 cm. Weight app. 137.5 g.

Accompanied by original case.

DKK 20,000-25,000 / € 2,700-3,350



449



450



451



452



453



454



455 ^{ARR}

ARJE GRIEGST

A diamond necklace set with a rough diamond crystal, mounted in 18k gold. Signed. L. app. 55 cm. Weight app. 31 g.

DKK 20,000-30,000 / € 2,700-4,000

456 ^{ARR}

ARJE GRIEGST

A diamond solitaire ring set with an old-cut diamond weighing app. 1.60 ct., mounted in 18k gold. Colour: Top Cape (K). Clarity: VS. App. size 56. Signed Griegst 91.

DKK 40,000-50,000 / € 5,350-6,700

457

ARJE GRIEGST

A "Spiral" bangle of 14k gold. Adjustable size. Weight app. 78.5 g. Signed Griegst 75.

Depicted and mentioned in Kerstin Wickman: "Arje Griegst. Guldsmed, designer og billedhugger // Goldsmith, Designer and Sculptor", Forlaget Vandkunsten, 2013, pp. 150-159.

DKK 50,000 / € 6,700



455



456



457



458

A pair of diamond ear studs each set with an old-cut diamond weighing app. 2.50 ct., totalling app. 5.00 ct., mounted in 18k white gold. Colour: Cape (M). Clarity: VS1. Florence, circa 1960. (2)

DKK 100,000 / € 13,500

459

A diamond ring set with a brilliant-cut diamond weighing app. 2.20 ct. encircled and flanked by numerous baguette and brilliant-cut diamonds weighing a total of app. 2.50 ct., totalling app. 4.70 ct., mounted in 18k white gold. Colour: Wesselton-Top Cape (H-L). Clarity: VS-SI. App. size 57. England, circa 1990. *DKK 70,000-80,000 / € 9,400-10,500*

460

An important diamond bracelet set with numerous brilliant-cut fancy yellow, cognac and white diamonds weighing app. 50.00 ct., mounted in 18k gold and white gold. Colour: Wesselton (H). Clarity: VS-SI. L. app. 17.5 cm. Weight app. 58.5 g. Circa 1950-60.

Accompanied by original case.

Purchased at Sotheby's "Magnificent Jewels", London.

DKK 250,000-300,000 / € 33,500-40,000



458



459



460



461

A Belle Èpoque diamond ring set with an old-cut diamond weighing app. 3.40 ct. flanked by single-cut diamonds, mounted in 14k gold and silver. Colour: Top Cape (K). Clarity: VS. Size 54. Circa 1900.

Accompanied by case.

DKK 40,000-50,000 / € 5,350-6,700

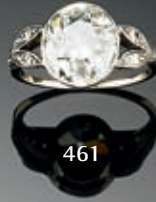
462

An Art Deco diamond brooch set with numerous old and single-cut diamonds weighing a total of app. 5.10 ct., mounted in platinum. Colour: Top Crystal-Crystal (I-J). Clarity: SI-P1. L. app. 5.5 x 5.3 cm. Circa 1920-30.

Accompanied by original case. DKK 30,000 / € 4,000

463

An Art Deco diamond bracelet set with numerous old and single-cut diamonds weighing a total of app. 12.00 ct., mounted in platinum. Colour: Top Crystal-Crystal (I-J). Clarity: SI-P1. L. app. 18.5 cm. Circa 1920-30. *DKK 50,000-60,000 / € 6,700-8,050*



461



462



463



464

An important diamond necklace set with numerous heart-shaped brilliant-cut natural fancy yellow diamonds weighing a total of app. 30.00 ct., mounted in 18k gold. Clarity: VS-SI. L. app. 41.5 cm. Weight app. 25.5 g. Milan, circa 2005.

Accompanied by Istituto Gemmologico Italiano certificate no. 40062. Milan, 2016.

Purchased for app. EUR 160,000. Milan, 2005.

DKK 400,000-500,000 / € 53,500-67,000



464



465

OLE LYNNGAARD

A diamond clasp in the shape of an elephant set with a brilliant-cut diamond weighing app. 0.10 ct., mounted in 14k gold. Colour: Top Wesselton (G). Clarity: VS. Accompanied by a pearl necklace set with cultured baroque pearls. Pearl diam. app. 8.2-9.2 mm. L. clasp app. 2.5 cm. L. necklace app. 82.0 cm.

Accompanied by original case.

DKK 10,000-12,000 / € 1,350-1,600

466

A pair of sapphire and diamond ear pendants each set with triangular-cut pink sapphires weighing a total of app. 1.90 ct. and numerous brilliant-cut diamonds weighing a total of app. 0.38 ct., mounted in 18k pink gold. Colour: River-Top Wesselton (E-F). Clarity: VVS. L. app. 2.5 cm. (2)

Cut grade: Excellent-cut.

DKK 10,000-12,000 / € 1,350-1,600

467

OLE LYNNGAARD

A diamond brooch "Flower" set with numerous brilliant-cut diamonds weighing a total of app. 0.08 ct., mounted in 18k gold. Colour: Top Wesselton (G). Clarity: VS. L. app. 3.0 x 5.5 cm. Design Charlotte Lynggaard.

Accompanied by original case.

Retail price app. DKK 36,500.

DKK 8,000-10,000 / € 1,050-1,350

468

OLE LYNNGAARD

A tourmaline and diamond ring "Bubbles" set with numerous circular-cut pink tourmalines and brilliant-cut diamonds weighing a total of app. 0.11 ct., mounted in 18k gold. Colour: Wesselton (H). Clarity: VS1. Size 55. *DKK 10,000-15,000 / € 1,350-2,000*

469

MARLENE JUHL - JØRGENSEN

A diamond ring set with numerous brilliant-cut diamonds weighing a total of app. 0.48 ct., mounted in 18k gold. Colour: Wesselton (H). Clarity: VS. Size app. 57.

Accompanied by original case.

DKK 8,000-10,000 / € 1,050-1,350

470

SHAMBALLA

A diamond bracelet "Tennis Bracelet" set with numerous brilliant-cut diamonds weighing a total of app. 0.36 ct., mounted in 18k pink gold. Colour: Top Wesselton (G). Clarity: VS. L. app. 17.5 cm.

Retail price app. DKK 81,400.

"Shamballa Jewels revisits the Tennis bracelet and presents it in a contemporary style. The beads are hinged together to drape luxuriously around the wrist. A dazzling constellation of diamond studded gold beads form this bracelet - crowned by one large Star of Shamballa bead at the center, which also functions as the lock".

DKK 25,000 / € 3,350



465



466



467



468



469



470



471

CARTIER

A pair of "Lakarda" diamond ear clips each set with numerous brilliant-cut diamonds weighing a total of app. 14.22 ct., mounted in 18k white gold. Colour: River (D-E). Clarity: IF-VVS. French assay marks and maker's mark. Signed Cartier. Serial no. 837516. Ref. no. HP800099. L. app. 3 cm. Cartier, Paris. (2) Accompanied by original case and Cartier certificate no. 2136431.

DKK 200,000-300,000 / € 27,000-40,000

472

A sapphire and diamond ring set with an oval-cut natural sapphire weighing app. 7.50 ct. encircled by numerous brilliant and baguette-cut diamonds weighing a total of app. 2.60 ct., mounted in 18k white gold. Colour: Top Wesselton-Wesselton (G-H). Clarity: VS-SI. Size 52. Rome, circa 1950. Accompanied by original case.

DKK 50,000-60,000 / € 6,700-8,050



471



472



473

A diamond necklace set with numerous brilliant-cut diamonds weighing a total of app. 7.93 ct., mounted in 18k white gold. Colour: Top Wesselton (F-G). Clarity: VVS-VS. L. app. 42 cm.

DKK 50,000-60,000 / € 6,700-8,050

474

A sapphire and diamond ring set with an oval-cut natural Ceylon sapphire weighing app. 3.92 ct. encircled by numerous brilliant-cut diamonds weighing a total of app. 2.30 ct., mounted in platinum. Colour: Top Wesselton (F-G). Clarity: VS-SI. Size 55. Circa 2015.

Accompanied by IGI certificate no. 38442 indicating, "No indications of treatments".

DKK 60,000 / € 8,050

475

A pair of tanzanite and diamond ear pendants "Moody Blues" each set with a detachable pear-shaped tanzanite weighing a total of app. 41.70 ct. and a pear-shaped diamond weighing a total of app. 2.02 ct. encircled by numerous brilliant-cut diamonds, totalling app. 2.21 ct., mounted in 18k white gold. Colour: Top Wesselton (F-G). Clarity: IF-VVS. L. app. 4.5 cm. St. Helier, Jersey, 2014. (2)

Accompanied by copy of certificate and original case. Retail price app. GBP 53,000. Jersey, 2014.

DKK 40,000-60,000 / € 5,350-8,050



473



474



475



476

CARTIER

A Panthère "Lakarda" diamond ring in the shape of a panther head set with two pear-shaped emeralds and numerous brilliant-cut diamonds weighing a total of app. 6.50 ct., mounted in 18k white gold. Colour: Top Wesselton (F-G). Clarity: VVS-VS. Size 53-55. Signed Cartier. Reference no. H4105900. Serial no. 763722. French assay marks and maker's mark. Weight app. 18.5 g. Cartier, Paris.

Accompanied by original case and jewellery bag.

Retail price app. DKK 615,000/EUR 82,000.

DKK 150,000-200,000 / € 20,000-27,000

477

A diamond bracelet set with numerous brilliant-cut diamonds weighing a total of app. 11.88 ct., mounted in 18k white gold. Colour: River-Top Wesselton (E-F). Clarity: VVS. L. app. 18 cm. Antwerp, 2018.

Cut quality: Excellent-cut. DKK 150,000 / € 20,000



476



477



481
STENSTRUP

A diamond eternity ring set with numerous brilliant-cut diamonds weighing a total of app. 2.70 ct., mounted in 18k gold and white gold. Colour: Top Wesselton (F-G). Clarity: VVS. Size 63. Weight app. 18.5 g.

Accompanied by original case and valuation from Stenstrup Jeweler from 1999 and 2011 of DKK 120,950.

DKK 10,000-15,000 / € 1,350-2,000

478

A Tahiti pearl and diamond necklace with cultured Tahiti pearls in pink and peacock nuances with a diamond clasp set with numerous brilliant-cut diamonds, mounted in 18k white gold. Pearl diam. app. 10.0-13.5 mm. L. app. 52 cm.

DKK 10,000-15,000 / € 1,350-2,000

479

A pair of coral and diamond ear clips each set with numerous cabochon corals and single and baguette-cut diamonds, mounted in 18k white gold. Colour: Top Wesselton-Wesselton (G-H). Clarity: VS-SI. L. app. 3.5 cm. Italy, circa 1950. (2)

DKK 10,000-15,000 / € 1,350-2,000

480

A diamond solitaire ring set with a brilliant-cut diamond weighing app. 1.35 ct., mounted in 18k white gold. Colour: Top Cape (K). Clarity: SI. Size 54.5.

Accompanied by case. DKK 15,000 / € 2,000

482

A coral and diamond brooch set with numerous cabochon corals and brilliant, single, and baguette-cut diamonds weighing a total of app. 2.20 ct., mounted in 18k white gold. Colour: Top WesseltonWesselton (G-H). Clarity: VS-SI. L. app. 6 cm. Italy, circa 1950.

DKK 10,000-15,000 / € 1,350-2,000

483

A diamond bracelet set with numerous brilliant-cut diamonds weighing a total of app. 5.11 ct., mounted in 18k white gold. Colour: Wesselton-Top Crystal (H-I). Clarity: VS. L. app. 18 cm.

Cut grade: Excellent-cut.

DKK 30,000-40,000 / € 4,000-5,350

484

H. WALTER - RASMUSSEN

A bracelet of 18k white gold. L. app. 19 cm. Weight app. 66 g. Circa 1980.

Accompanied by jewellery bag.

DKK 10,000-12,000 / € 1,350-1,600



478



479



480



481



482



483

484



485

An important diamond ring set with a natural fancy purplish pink cut-cornered rectangular modified brilliant-cut Argyle diamond weighing app. 1.05 ct. encircled by numerous brilliant-cut natural fancy pink diamonds weighing a total of app. 0.19 ct., trapeze-cut diamonds weighing a total of app. 0.91 ct. and brilliant-cut diamonds weighing a total of app. 0.66 ct., mounted in 18k pink and white gold. Colour: Top Wesselton-Wesselton (G-H). Clarity: VS. Size 52.

Accompanied by case and GIA certificate no. 12865015. New York, 2003.

Colour distribution: Even.

Natural pink diamonds are very rare, and only about 0.01% of all diamonds are pink. Of those, about 90% are mined in the Argyle Diamond Mine in Kimberley in Western Australia, which is one of the largest diamond mines in the world.

The mine opened in 1985 and has since then been the only reliable source for pink diamonds ranging in colour from rose-petal pink to deep blue-violet.

No more than fifty diamonds weighing above 0.50 ct. are mined in a year. Because the pink diamonds are so rare, they are very sought after on the international diamond market and the prices have shown continual growth in value year over year.

With the depletion of the ore body in the Argyle Diamond Mine and the likelihood of the mine's closure by the end of 2020, 90% of the world's coloured diamond supply will dry up and the industry is expecting the existing diamonds to explode in value as a result.

These already precious stones are seeing the biggest surge in interest and popularity since Ben Affleck gave one to Jennifer Lopez in 2002. Their beauty and rarity already made them valuable commodities, and now that the supply is running out, interest is pushing their value and price through the roof.

According to Arpège, "At the upper echelon, these pink diamonds see an average price per carat of \$1.5 to \$3 million per carat. Investors and collectors are taking notice of these increasing values, and as supply decreases with the upcoming closure of the Argyle Diamond Mine, the demand is sure to continue to drive up this price".

DKK 500,000-600,000 / € 67,000-80,500



485



486

A pearl and diamond necklace set with numerous cultured pearls and brilliant-cut diamonds weighing a total of app. 8.00 ct., mounted in 18k white gold. Colour: Wesselton-Top Crystal (H-I). Clarity: VS-P1. Pearl diam. app. 8.0-9.0 mm. L. app. 42 cm. Weight app. 126 g. London, circa 1990.

Purchased for GBP 42,000 in 1990.

DKK 60,000-80,000 / € 8,050-10,500

487

A diamond brooch set with numerous old-cut diamonds weighing a total of app. 4.00 ct., mounted in platinum. Colour: Wesselton-Crystal (H-J). Clarity: SI-P1. L. app. 5.0 x 4.5 cm. Circa 1890-1900.

Accompanied by case.

DKK 15,000 / € 2,000

488

A diamond ring set with an old-cut diamond weighing app. 1.50 ct. encircled by numerous old and single-cut diamonds weighing a total of app. 1.00 ct., totalling app. 2.50 ct., mounted in platinum. Colour: Top Crystal (I). Clarity: VS. Size 51. Circa 1900.

Accompanied by case.

DKK 15,000-20,000 / € 2,000-2,700



486



487



488



491

H. WALTER - RASMUSSEN

An opal and diamond ring set with a cabochon opal encircled by numerous brilliant-cut diamonds weighing a total of app. 0.50 ct., mounted in 14k white gold. Size 52. Circa 1970-80.

DKK 8,000-10,000 / € 1,050-1,350

489

GEORG JENSEN & WENDEL

An opal and diamond pearl necklace with cultured pearls and clasp set with a cabochon opal encircled by numerous brilliant and baguette-cut diamonds weighing a total of app. 1.00 ct., mounted in 18k white gold. Colour: Top Wesselton-Wesselton (F-H). Clarity: VS-SI. Pearl diam. app. 8.4-8.5 mm. L. app. 39 cm.

Accompanied by original case.

DKK 12,000-15,000 / € 1,600-2,000

490

V. HOLMSTRUP

A pair of Mabé pearl and diamond ear clips each set with a cultured Mabé pearl and numerous brilliant-cut diamonds weighing a total of app. 1.10 ct., mounted in 14k white gold. Colour: Top Wesselton (F-G). Clarity: VVS. Pearl diam. app. 12.8 mm. L. app. 1.5 cm. (2)

Accompanied by original case.

DKK 8,000-10,000 / € 1,050-1,350

492

A diamond ring set with numerous brilliant-cut diamonds weighing a total of app. 1.80 ct., mounted in 18k white gold. Colour: Top Wesselton-Wesselton (G-H). Clarity: VS. Size 52.5.

Accompanied by case.

DKK 10,000-15,000 / € 1,350-2,000

493

A diamond brooch in the shape of a flower set with an old-cut diamond weighing app. 0.95 ct. encircled by numerous single and brilliant-cut diamonds, mounted in platinum. Colour: Top Wesselton-Wesselton (G-H). Clarity: VS-P. App. 4.5 x 4.0 cm. Weight app. 17 g. Circa 1950.

DKK 8,000-10,000 / € 1,050-1,350

494

A diamond bracelet set with numerous brilliant-cut diamonds weighing a total of app. 2.80 ct., mounted in 18k white gold. Colour: Wesselton-Top Crystal (H-I). Clarity: VS-SI. L. app. 18 cm. Circa 1930-40.

DKK 18,000-20,000 / € 2,400-2,700



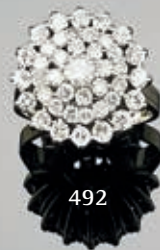
489



490



491



492



493



494



495

A tourmaline and diamond necklace set with a pear-shaped pink tourmaline, numerous tourmaline and emerald beads and brilliant-cut diamonds, mounted in 18k white gold. Colour: Top Crystal-Crystal (I-J). Clarity: VS. L. pendant app. 11 cm. L. necklace app. 84 cm. Circa 1980.

DKK 30,000-35,000 / € 4,000-4,700

496

An emerald and diamond ring set with an oval cabochon emerald weighing app. 23.00 ct. encircled by numerous brilliant-cut diamonds weighing a total of app. 1.50 ct., mounted in 18k white gold. Colour: Top Wesselton-Wesselton (G-H). Clarity: SI. Size 57.

DKK 50,000 / € 6,700

497

SHAMBALLA

A pair of ruby ear pendants each with a bead set with numerous circular-cut rubies weighing a total of app. 5.24 ct., mounted in 18k white gold. Bead diam. app. 10 mm. L. app. 2 cm. (2)

Retail price app. DKK 52,000. DKK 15,000 / € 2,000

498

An iolite and diamond ring set with a cabochon iolite weighing app. 7.30 ct. encircled by numerous single-cut diamonds weighing a total of app. 1.20 ct., mounted in 18k white gold. Colour: Wesselton-Top Crystal (H-I). Clarity: VS-P1. Size 47. Circa 1950.

DKK 12,000-15,000 / € 1,600-2,000

499

A pair of kyanite and diamond ear pendants each set with a pear-shaped kyanite, tourmalines and a circular-cut sapphire encircled by numerous single-cut diamonds, mounted in oxidized sterling silver and 14k gold. L. app. 8 cm. Circa 2010. (2)

DKK 10,000-15,000 / € 1,350-2,000

500

A tanzanite and diamond bracelet set with numerous beads of tanzanite weighing a total of app. 315.00 ct., oval-cut kyanites weighing a total of app. 21.50 ct. and single-cut diamonds weighing a total of app. 5.25 ct., mounted in oxidized sterling silver. Bead diam. app. 2.7 - 3.3 mm. L. app. 19 cm. Circa 2010.

DKK 15,000-20,000 / € 2,000-2,700





501

An important ruby and diamond necklace set with numerous oval, pear-shaped and marquise-cut rubies weighing a total of app. 50.00 ct. and pear-shaped and brilliant-cut diamonds weighing a total of app. 13.00 ct., mounted in 18k white gold. Colour: Top Wesselton-Wesselton (G-H). Clarity: VS-P1. L. app. 42 cm. Weight app. 66.5 g. Circa 2010. Accompanied by case.

Purchased at Sotheby's "Magnificent Jewels", London.

DKK 250,000 / € 33,500

501





502

A Belle Époque necklace and diamond pendant set with old-cut diamonds weighing a total of app. 3.35 ct., mounted in platinum. Colour: Wesselton-Cape (H-M). Clarity: SI-P1. L. pendant app. 3 cm. L. necklace app. 39 cm. Circa 1900-10.

DKK 18,000-20,000 / € 2,400-2,700

503

An emerald and diamond brooch set with numerous marquise-cut emeralds, sapphires and brilliant-cut diamonds weighing a total of app. 3.05 ct., mounted in platinum. Colour: Top Wesselton-Wesselton (G-H). Clarity: VVS-VS. L. app. 4.5 x 4.4 cm. Stamped Depose SSM. France, circa 1940-50.

Accompanied by case from Harrods, London.

DKK 15,000-18,000 / € 2,000-2,400

504

A diamond ring set with numerous brilliant-cut diamonds weighing a total of app. 3.30 ct., mounted in 18k white gold. Colour: Top Wesselton-Wesselton (G-H). Clarity: VVS-SI1. Size app. 53.

DKK 20,000 / € 2,700

505

An emerald and diamond ring set with an emerald-cut Colombian emerald weighing app. 5.87 ct. flanked by numerous brilliant-cut diamonds weighing a total of app. 0.66 ct., mounted in 18k white gold. Colour: Top Crystal (I). Clarity: SI. Size 54. Rome, circa 1990.

Accompanied by Istituto Gemmologico Nazionale certificate no. 27376 indicating, Origin: "Colombia". Rome, 2019. DKK 50,000-60,000 / € 6,700-8,050

506

An emerald and diamond ring set with an emerald-cut emerald encircled by numerous brilliant-cut diamonds weighing a total of app. 1.20 ct., mounted in 18k white gold. Colour: Top Wesselton-Wesselton (G-H). Clarity: VVS-VS. Size 52. Circa 1950-60.

Accompanied by case.

DKK 8,000-10,000 / € 1,050-1,350

507

A diamond bracelet set with numerous brilliant-cut diamonds weighing a total of app. 6.30 ct., mounted in 18k white gold. Colour: Top Wesselton-Wesselton (F-H). Clarity: VS-SI1. L. app. 18.5 cm. Milan, circa 2015.

DKK 35,000-40,000 / € 4,700-5,350



502



503



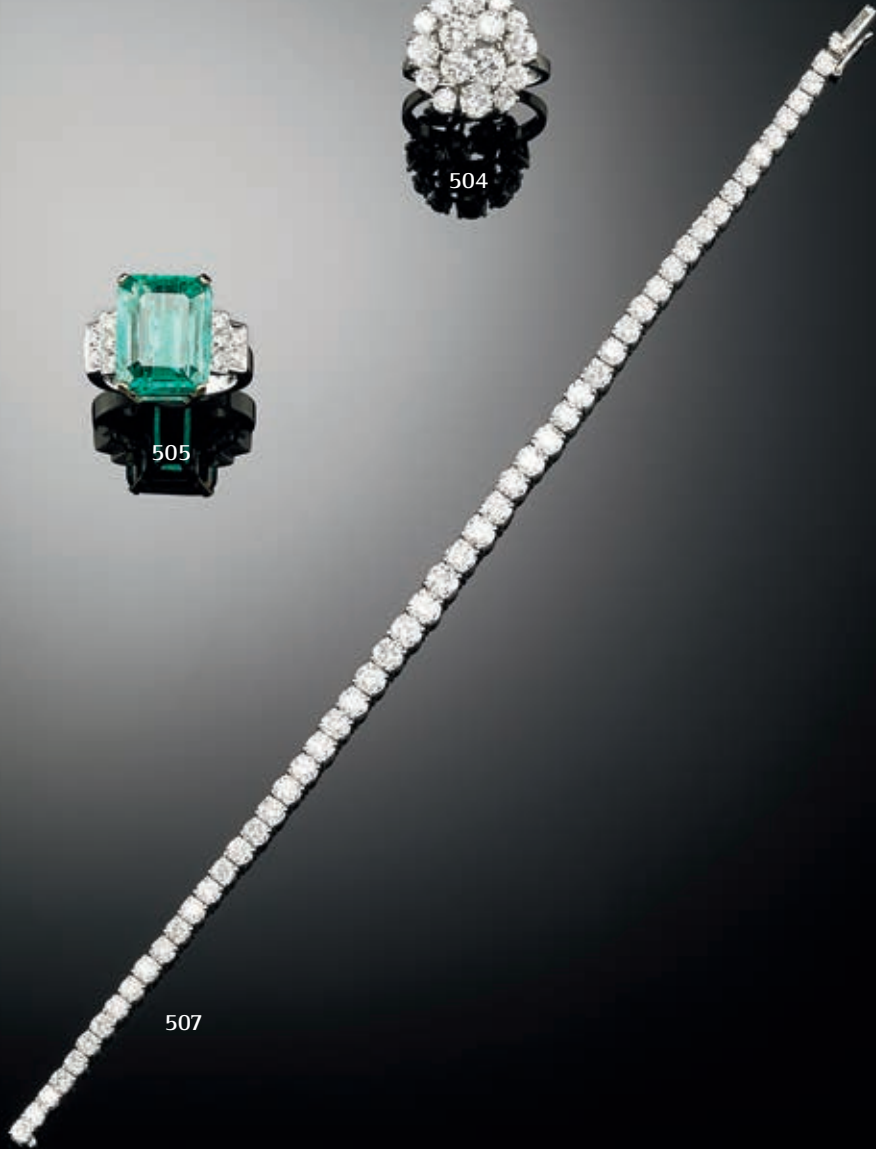
504



505



506



507



508

A diamond necklace set with numerous brilliant-cut diamonds weighing a total of app. 1.16 ct., mounted in 18k gold. Colour: Top Wesselton-Wesselton (G-H). Clarity: SI. L. app. 42.5 cm. Weight app. 108 g.

Accompanied by case.

Retail price app. DKK 143,800.

DKK 15,000-20,000 / € 2,000-2,700

509

A pair of emerald, ruby, sapphire and diamond ear pendants each set with numerous cabochon emeralds, circular-cut rubies, sapphires, and brilliant-cut diamonds weighing a total of app. 2.80 ct., mounted in 18k gold. Colour: Top Crystal-Top Cape (I-K). Clarity: SI-P1. Diam. app. 2,6 cm. Rome, circa 1950-60. (2) *DKK 15,000-20,000 / € 2,000-2,700*

510

An emerald, ruby, sapphire and diamond brooch set with numerous cabochon emeralds, circular-cut rubies, sapphires, and brilliant-cut diamonds, mounted in 18k gold. Colour: Top Cape (K-L). Clarity: SI-P1. Diam. app. 3,8 cm. Rome, circa 1950-60.

DKK 20,000-25,000 / € 2,700-3,350

511

MARIANNE DULONG

A diamond solitaire ring "Twinkle" set with an old-cut diamond weighing app. 2.31 ct., mounted in 18k gold. Colour: Top Wesselton (F-G). Clarity: SI. Size 55.

Accompanied by case and certificate from Niels Ruddy Hansen.

Retail price app. DKK 120,000.

DKK 30,000-50,000 / € 4,000-6,700

512

A Belle Époque sapphire and diamond brooch set with cabochon sapphires and old-cut diamonds weighing a total of app. 1.20 ct., mounted in 14k gold. Colour: Top Cape (K-L). Clarity: SI. L. app. 3.5 cm. Circa 1900.

DKK 6,000-8,000 / € 805-1,050

513

An emerald and diamond bangle set with a square-cut emerald and an old-cut diamond weighing app. 0.25 ct., mounted in 18k gold. Colour: Top Cape (K). Clarity: SI. Diam. app. 6 cm. Weight app. 28 g. Circa 1900.

DKK 8,000-10,000 / € 1,050-1,350



508



509



510



511



512



513



CHRISTIANSBORG PALACE

Temporary exhibit
Royal goldsmithing
Christiansborg Palace
27.9. - 15.12. 2019



Worthy of a Queen

- master, patron, monarch



KJØBENHAVNS GULDMEDELAUG
STIFTET 1645 - SILVERMADEFABRIKUM COPENHAGEN

christiansborg.dk

Worthy of a Queen

Since 1429, *Kjøbenhavns Guldsmedelaug* (Copenhagen Goldsmiths' Guild) has represented some of Denmark's most renowned gold- and silversmiths. Approximately every third year, the guild gives out the prestigious *Skt. Loye Award*, which honours new talents within the industry. In 2019, the award ceremony is accompanied by "The City of Jewellery" events. Several of Copenhagen's Jewellery artists open their doors to host vernissages and other events, all of which aim to provide an insight into the breadth of the industry, the proud traditions of craftsmanship and the passionate artists working within it. As participants in "The City of Jewellery", Bruun Rasmussen presents a selection of exquisite jewellery at auction, all created by members of the Copenhagen Goldsmiths' Guild.



526

This year's theme for the Copenhagen jewellery event is "Worthy of a Queen". The title comes from the current exhibition of the same name at Christiansborg Palace, where visitors can experience exciting examples of gold- and silverwork commissioned by, or for, Queen Margrethe II of Denmark.



521

The 13 jewellery pieces (lot no. 514-526) were created by several well-known jewellery artists from the Danish gold- and silversmith industry. This includes works by Jytte Kløve, Josephine Bergsøe, Mads Heindorf, Sofie Lunøe, Emquies-Holstein, Camilla Weylandt, Mikkel Brøgger, Lau Ebbesen, Lone Løvschal, Karina Noyons and Kasia Gasparski. All of them sublime pieces that in terms of both artistry and craftsmanship are worthy of a queen.



516



518



514 *

KASIA GASPARKI

A necklace "Illusion Necklace Circle" set with numerous floating halos of 24k fine gold. Diam. app. 14.0-18.5 mm. String of resin. L. app. 50 cm. Weight app. 18 g. 2019.

Accompanied by original case.

Kasia Gasparski trained as a goldsmith under Jytte Kløve from 1990-1994. She first exhibited at Charlottenborg Spring Exhibition in 1993. Since 1996 she has had her own workshop and gallery. In 1996 she received a three-year grant from the Danish Arts Foundation and her work has been exhibited at several museums both in Denmark and abroad.

She has designed a series of necklaces for Museum of Modern Art (MoMa), New York and is represented at The Danish Arts Foundation's jewellery collection with several pieces. DKK 10,000-15,000 / € 1,350-2,000

515 *

KASIA GASPARKI

A pearl and diamond ring "The Ladder" set with numerous cultured freshwater pearls and brilliant-cut champagne coloured and white diamonds weighing a total of app. 0.06 ct., mounted in 14, 18 and 24k gold. Colour: Top Wesselton (F-G). Clarity: VVS-SI. App. size 52. 2019.

Accompanied by material about Kasia Gasparski and original case. DKK 12,000-15,000 / € 1,600-2,000



514



515



516 *

CAMILLA WEYLANDT

A diamond ring "Sphere" set with an interchangeable diamond sphere set with numerous brilliant-cut diamonds weighing a total of app. 0.36 ct., mounted in 18k gold. Colour: Top Wesselton (F-G). Clarity: VVS. Accompanied by three interchangeable spheres made of rose quartz, aquamarine and moonstone. Sphere diam. app. 10 mm. Size 52. (4)

Accompanied by original case.

Camilla Weylandt is educated goldsmith at Georg Jensen at 2002 with a medal. The same year she opened her own shop. She worked for Georg Jensen for twelve years and represented them in Japan, Taiwan and Hong Kong in 2004. It is characteristic for her to create jewels in one thread. The simple lines and the single thread gives her jewels a mimimalistic and scandinavian expression.

DKK 10,000-15,000 / € 1,350-2,000

517 *

SOFIE LUNØE

A Tahiti pearl and diamond bracelet "Twist" set with numerous cultured Tahiti pearls and brilliant-cut diamonds weighing a total of app. 0.48 ct., mounted in 14k white gold. Colour: Top Wesselton (G). Clarity: VVS. Pearl diam. app. 11.0-12.0 mm. L. app. 21.5 cm. 2019.

Accompanied by original case.

Sofie Lunøe is a traditionally trained goldsmith. Her aim is to create jewellery as small wearable sculptures. She strives to merge classic materials such as gold, diamonds and pearls into modern compositions. The Twist collection is her reinterpretation of the classic pearl jewellery. *DKK 10,000-15,000 / € 1,350-2,000*

518 *

JOSEPHINE BERGSØE

A pink diamond ring "Cocktail Pave" set with an oval and two pear-shaped presumably natural pink diamonds weighing a total of app. 0.32 ct. and numerous brilliant-cut white diamonds weighing a total of app. 0.50 ct., mounted in 18 and 22k gold and white gold. Colour: Top Wesselton (F-G). Clarity: VVS. App. size 54.5. 2019.

Accompanied by original case.

Josephine Bergsøe has displayed her jewellery in galleries and museums of design and art in; Denmark, New York, Berlin Moscow, Amsterdam, Beijing and Stockholm. She has been commissioned to make jewellery for the Royal family of Denmark and a number of exclusive international clients involving; Halle Berry, Meryl Streep, Jeremy Irons, and Glen Close. Exhibited at Charlottenborg Autumn Exhibition in 1994, Design Museum Denmark in 1998, 2001, and 2008, Amalienborg Castle and Koldinghus in 2009, and Rosenborg Castle in 2012.

DKK 15,000-20,000 / € 2,000-2,700

519 *

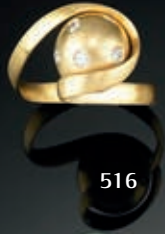
MIKKEL BRØGGER

A tourmaline and diamond ring "The Queen's Garden" set with emerald and triangular-cut tourmalines, emerald-cut amethyst, a circular-cut emerald and sapphires and brilliant-cut diamonds weighing a total of app. 0.15 ct., mounted in 14k white gold. Size 50.5. 2019.

Accompanied by original case.

Inspired by Her Majesty Queen Margrethe's colourful flower garden at Fredensborg Palace. Mikkel Brøgger began his training as a goldsmith in the classical tradition of an artisan's apprentice. He continued at Ted Muehling's studio in New York and has worked on projects for jewelry companies like Georg Jensen (2011), David Yurman (2013), and Venessa Arizaga (2015). Mikkel Brøgger has received an "Award for Excellence" from the Danish Craft Association in jewelry design.

DKK 10,000-12,000 / € 1,350-1,600



516



517



518



519



520 *

JYTTE KLØVE

A pearl necklace "Round Table Conversation" set with numerous cultured freshwater pearls, mounted in 14k pink gold. Pearl diam. app. 8.0-14.0 mm. L. app. 53 cm. 2019.

Accompanied by original case.

Jytte Kløve has received several prizes and grants such as working grants from the Danish Art Foundation in 1998 and 2003, The Danish National Treasury Foundation in 1994 and 2004, and an honorary grant from the Danish National Bank's Jubilee Foundation. Jytte Kløve is represented at the Museum of Koldinghus, Designmuseem Denmark, and the Danish Arts Foundation's Jewellery Collection.

DKK 30,000-40,000 / € 4,000-5,350

521 *

MADS HEINDORF JEWELLERY

A lava stone and diamond ring "The Universe - Mars" set with a sphere of lava stone and numerous brilliant-cut diamonds weighing a total of app. 0.15 ct., mounted in 18k gold. Colour: Top Wesselton (F-G). Clarity: VS. App. size 54. 2019.

Accompanied by original case.

Mads Heindorff was an apprentice to goldsmith John Robert Cloos from 2001-2006.

Exhibited at Ordrupgaard and HEART 2014.

DKK 15,000 / € 2,000

522 *

JYTTE KLØVE

A diamond ring "Pi" set with a brilliant-cut champagne coloured diamond weighing app. 1.48 ct. and brilliant-cut white diamonds weighing a total of app. 0.08 ct., mounted 14k gold. Colour: Top Wesselton (G). Clarity: VVS. App. size 53. Weight app. 18.5 g. 2019.

Accompanied by original case.

DKK 20,000-30,000 / € 2,700-4,000



520



521



522



523 *

LAU EBBESEN

A diamond jewellery set comprising a ring set with brilliant-cut diamonds weighing a total of app. 0.45 ct. and a pendant set with brilliant-cut diamonds weighing a total of app. 0.06 ct., mounted in 18k gold and carved umokoko nut from the Tanganyika Lake in Burundi. Colour: Top Wesselton (F-G). Clarity: VVS. Signed. Ring app. size 54. L. pendant app. 3 cm. 2019. (2)

Lau Ebbesen is educated in 2002 at Vagn Drachmann. In 2014 he received the Hetsch Medal, which is an annual Danish design award for art and crafts designers in Denmark. Every year The Copenhagen School of Design and Technology (KEA) awards talented artists and designers with the Hetsch-medal.

DKK 10,000-12,000 / € 1,350-1,600

524 *

KARINA NOYONS

A pair of diamond ear pendants each set with a brilliant-cut diamond weighing a total of app. 0.12 ct., mounted in 18k gold. Colour: Top Wesselton (G). Clarity: VVS. L. app. 3.5 cm. Weight app. 11.5 g. (2) *Accompanied by original case.*

Karina Noyons is educated goldsmith in Holland and jewellery designer in Denmark. Karina Noyon's jewellery design is characterized by the classic nordic simplicity added a conceptual and innovative approach. Represented at the Danish Arts Foundation's jewellery Collection.

DKK 8,000 / € 1,050

525 *

EMQUIES - HOLSTEIN

A spinel "Love" ring set with numerous circular-cut spinels weighing a total of app. 0.89 ct., mounted in 18k gold. Size 54. 2019.

Accompanied by original case.

Hanan Emquies and Diana Holstein are the designers behind the company Emquies-Holstein, which creates jewelry that emphasizes sculptural shapes, structures and the graphic expression. Diana Holstein says: "We have long wanted to express our opinions through art and design, and have therefore created a company that is completely true to our desire to tell stories, renew traditions and maintain a high quality that places our design in the field between unique art and art industry" Diana Holstein has since 2014 been master of the Copenhagen Goldsmiths Guild.

DKK 10,000-15,000 / € 1,350-2,000

526 *

LONE LØVSCHAL

A spinel ring set with numerous circular-cut spinels, mounted in 18k gold. Weight app. 13 g. 2019.

Accompanied by original case.

Love Løvschal trained as a Silversmith at Georg Jensen Silversmiths and have a MA from the Royal College of Art in London. She is mainly making custom made precious jewellery and silverware but also smaller series of jewellery design for well known international jewellery brands.

DKK 10,000 / € 1,350



523



524



525



526



527

BULGARI

A pair of diamond ear clips "Pigne" each set with numerous brilliant-cut diamonds, mounted in 18k gold. Colour: Top Wesselton (F-G). Clarity: VVS-VS. Signed Bulgari. Italien assay marks. L. app. 3.5 cm. Total weight app. 28.5 g. Circa 1980. (2)

Accompanied by original case.

DKK 25,000-30,000 / € 3,350-4,000

528

SHAMBALLA

A pink diamond and onyx bracelet with beads of onyx and a diamond bead set with numerous brilliant-cut natural pink Argyle diamonds weighing a total of app. 1.78 ct., mounted in 18k gold and black braid. Pearl diam. app. 8.0-10.0 mm. Adjustable size.

Retail price DKK 381,500.

Accompanied by original wooden case and copy of Shamballa certificate no. S103597 from 2018.

DKK 80,000-100,000 / € 10,500-13,500

529

A diamond bracelet set with numerous brilliant-cut diamonds weighing a total of app. 14.84 ct., mounted in 18k gold. Colour: Top Cape (K-L). Clarity: VVS-SI. L. app. 18 cm. Antwerp, circa 2017.

Cut quality: Excellent-cut.

DKK 125,000-150,000 / € 16,500-20,000



527



528

529



530
HARTMANN'S

A necklace with a diamond pendant set with numerous brilliant-cut diamonds weighing a total of app. 2.21 ct., mounted in 18k gold. Colour: Top Wesselton (F-G). Clarity: VVS-VS. L. necklace app. 90.0 cm. L. pendant app. 2.5 cm. Circa 2010.

Accompanied by certificate no. 10061020252 from Hartmann's with an insurance valuation of DKK 59,000. DKK 20,000 / € 2,700

531
BULGARI

An onyx and diamond necklace set with carved onyx and numerous brilliant-cut diamonds weighing a total of app. 0.30 ct., mounted in 18k rose gold. Colour: Top Wesselton (F-G). Clarity: VVS-VS. L. app. 43.5 cm. DKK 15,000 / € 2,000

532
A diamond ring set with an emerald-cut diamond weighing app. 0.52 ct. encircled and flanked by numerous brilliant-cut diamonds, totalling app. 1.21 ct., mounted in 18k gold and white gold. Colour: Wesselton-Light Yellow. Clarity: VVS-VS. Size 53. DKK 15,000 / € 2,000

533
A diamond ring set with numerous brilliant-cut diamonds weighing a total of app. 3.70 ct., mounted in 18k rose gold. Colour: Top Wesselton-Wesselton (G-H). Clarity: VS-SI. Size app. 53. DKK 20,000-25,000 / € 2,700-3,350

534
HARTMANN'S
A diamond eternity ring set with numerous brilliant-cut diamonds weighing a total of app. 3.09 ct., mounted in 18k gold. Colour: Top Wesselton (F-G). Clarity: VVS-VS. Size 54. Circa 2019. *Accompanied by certificate no. 05081935028 with an insurance valuation from 2019 from Hartmann's of DKK 92,200. DKK 20,000-25,000 / € 2,700-3,350*

535
SHAMBALLA
A diamond bracelet "Royal Bracelet" set with numerous brilliant-cut diamonds weighing a total of app. 1.86 ct., mounted in 18 pink gold. Colour: Top Wesselton (G). Clarity : VS. L. app. 17.5 cm. *Retail price app. DKK 72,000. "In 2008 an interview of a young lady was published. Formerly an Australian, this was her interview as Crown Princess Mary of Denmark. On her arm, discreet and elegant, was a Shamballa Jewels bracelet with a pavé bead of Argyle Pink diamonds from Australia – a subtle combination of her two worlds. Over the years Her Royal Highness has had her bracelet re-designed, with the Argyle Pink diamond pavé staying constant. First designed as a classic braided Shamballa bracelet with Tahitian pearls, it was later customised into an orb bracelet. Today Her Royal Highness wears her Argyle pink diamond pavé as a Shamballa Jewels Royal Bracelet. It beautifully illustrates the versatility of our pavé beads and the customisation possibilities they offer". DKK 20,000-25,000 / € 2,700-3,350*



530



531



532



533



534



535



536

A diamond necklace set with numerous brilliant-cut champagne coloured diamonds weighing a total of app. 17.77 ct., mounted in 18k gold. L. app. 103 cm. Milan, circa 2016.

DKK 18,000-20,000 / € 2,400-2,700

537

A diamond ring set with a marquise-cut natural cognac coloured diamond weighing app. 4.35 ct. encircled by numerous marquise-cut diamonds weighing a total of app. 3.00 ct., totalling app. 7.35 ct., mounted in 14k white gold. Colour: Top Wesselton-Wesselton (G-H). Clarity: VS-SI. Size 53. Can be used as a pendant. L. pendant app. 3.2 cm. New York, 2014.

Purchased for app. USD 84,500. New York, 2014.

Grading of centre diamond: VS.

DKK 100,000-150,000 / € 13,500-20,000



536



537



538

A Belle Époque necklace with a diamond pendant set with old-cut diamonds weighing a total of app. 1.80 ct., mounted in platinum. Colour: Crystal-Top Cape (J-K). Clarity: VS-P1. L. pendant app. 3 cm. L. necklace app. 27 cm. Circa 1910-20.

Accompanied by original case.

DKK 15,000-18,000 / € 2,000-2,400

539

A pair of tanzanite and diamond ear pendants each set with an oval and pear-shaped cabochon tanzanite, a pear-shaped sapphire and numerous single-cut diamonds weighing a total of app. 2.10 ct., mounted in silver and 14k gold. L. app. 6.5 cm. Circa 1980. (2) DKK 12,000-15,000 / € 1,600-2,000

540

A diamond ring set with an old-cut diamond weighing a total of app. 2.10 ct. encircled by numerous old-cut diamonds weighing a total of app. 1.00 ct., totalling app. 3.10 ct., mounted in platinum. Colour: Top Wesselton-Wesselton (G-H). Clarity: SI-P1. Size 52. Circa 1900.

Accompanied by case.

DKK 20,000-30,000 / € 2,700-4,000

541

A diamond ring set with an old-cut diamond weighing app. 3.00 ct. flanked by old-cut diamonds, mounted in platinum. Colour: Cape (M). Clarity: VS. Size 57. DKK 70,000-80,000 / € 9,400-10,500

542

A diamond ring set with an old-cut diamond weighing app. 1.00 ct. encircled by numerous old-cut diamonds weighing a total of app. 1.20 ct., totalling app. 2.20 ct., mounted in platinum. Colour: Wesselton-Top Crystal (H-I). Clarity: SI-P1. Size 57.5. Circa 1900-10. DKK 20,000-25,000 / € 2,700-3,350

543

A diamond brooch in the shape of a flower branch "En Tremblant" set with numerous rose and old-cut diamonds weighing a total of app. 4.11 ct., mounted in gold and silver. L. app. 7.5 cm. Circa 1870.

Accompanied by original case.

DKK 40,000-50,000 / € 5,350-6,700



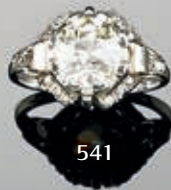
538



540



539



541



542



543



544

An Art Deco sapphire and diamond ring set with a cushion-cut natural sapphire weighing app. 7.58 ct. flanked by numerous old-cut diamonds weighing a total of app. 0.55 ct., mounted in 14k gold and silver. Colour: Top Wesselton (F-G). Clarity: VS-SI. Size 60. Circa 1920.

Accompanied by certificate no. 681992 from SGL (Svenska Gemmologiska Laboratoriet).

DKK 60,000-80,000 / € 8,050-10,500

545

An Art Deco diamond brooch set with numerous old, brilliant and baguette-cut diamonds weighing a total of app. 7.00 ct., mounted in platinum. Colour: Top Wesselton-Top Crystal (G-I). Clarity: VVS-VS. L. app. 5.0 x 2.8 cm. Weight app. 33.5 g. Circa 1930.

DKK 60,000-70,000 / € 8,050-9,400

546

A diamond bracelet set with numerous brilliant-cut diamonds weighing a total of app. 17.68 ct., mounted in 18k white gold. Colour: Top Wesselton-Top Crystal (G-I). Clarity: VS-SI. L. app. 18 cm. Antwerp, circa 2017.

Cut quality: Excellent-cut.

DKK 250,000-300,000 / € 33,500-40,000



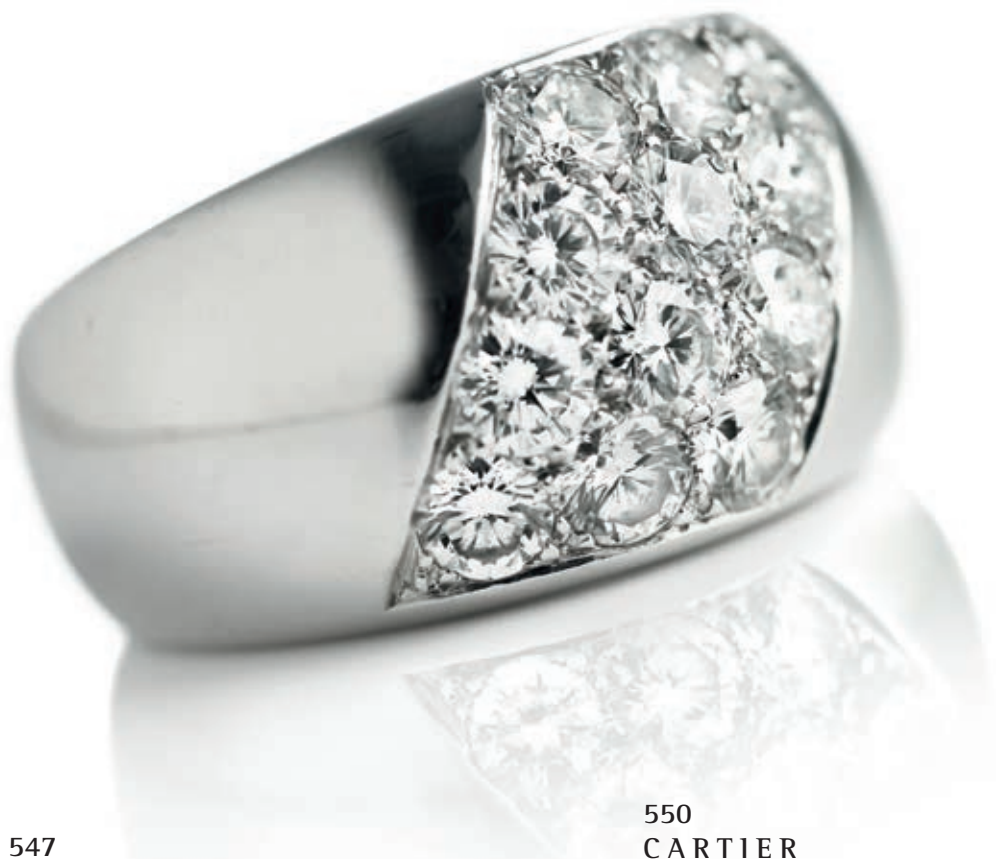
544



545



546



547

A necklace and diamond pendant set with a brilliant-cut diamond weighing app. 1.01 ct., mounted in 18k white gold. Colour: River (E). Clarity: SI2. L. app. 40 cm.

Accompanied by CGL certificate no. 2062441952005201. 2018.

DKK 18,000-20,000 / € 2,400-2,700

548

A pair of diamond ear pendants each set with a pear-shaped brilliant-cut diamond weighing a total of app. 1.60 ct. encircled by numerous brilliant-cut diamonds, totalling app. 2.80 ct., mounted 18k white gold. Colour: Wesselton (H). Clarity: VS-SI. L. app. 3 cm. Milan, circa 2016. (2)

DKK 30,000-40,000 / € 4,000-5,350

549

A diamond solitaire ring set with an old-cut diamond weighing app. 2.20 ct., mounted in 18k white gold. Colour: Top Cape (K-L). Clarity: SI. Size 53. Circa 1950-60. *DKK 30,000-40,000 / € 4,000-5,350*

550

CARTIER

A diamond ring "Océane" set with numerous brilliant-cut diamonds weighing a total of app. 2.40 ct., mounted in 18k white gold. Colour: Top Wesselton (F-G). Clarity: VVS-VS1. Size 56. Signed Cartier. Ref. no. N4106400. Serial no. 0110. Weight app. 18 g.

Accompanied by original case.

DKK 40,000-50,000 / € 5,350-6,700

551

BUCHERER

A diamond ring set with numerous brilliant-cut diamonds weighing a total of app. 1.20 ct., mounted in 18k white gold. Colour: Top Wesselton (F-G). Clarity: VS. App. size 56.

DKK 10,000-15,000 / € 1,350-2,000

552

A diamond bracelet set with numerous brilliant-cut diamonds weighing a total of app. 7.92 ct., mounted in 18k white gold. Farve: Wesselton-Top Crystal (H-I). Clarity: VS-SI. L. app. 18 cm.

DKK 30,000-40,000 / € 4,000-5,350



547



548



549



550



551



552



553

A pair of diamond ear pendants each set with a marquise, emerald, princess, oval, pear-shaped and brilliant-cut diamond weighing a total of app. 5.87 ct., mounted in 18k white gold. Colour: Top Wesselton-Wesselton (G-H). Clarity: VS-SI. L. app. 3.8 cm. Milan, circa 2015. (2)

DKK 65,000-70,000 / € 8,700-9,400

554

A diamond necklace set with numerous oval, marquise, pear-shaped and brilliant-cut diamonds weighing a total of app. 14.17 ct., mounted in 18k white gold. Colour: Top Wesselton (F-G). Clarity: VS-SI. L. app. 93 cm. Antwerp, circa 2016.
Cut grade: Excellent-cut.

DKK 100,000-125,000 / € 13,500-16,500

555

A diamond ring set with numerous fancy and brilliant-cut diamonds weighing a total of app. 2.30 ct., mounted in 18k white gold. Colour: River-Top Wesselton (D-F). Clarity: IF-VVS. Size 54. Antwerp, circa 2018.

Cut quality: Excellent-cut.

Accompanied by certificate no. 1681991 from SGL (Svenska Gemmologiska Laboratoriet).

DKK 50,000-60,000 / € 6,700-8,050



553



554



555



556

A Tahiti pearl and diamond necklace set with a cultured Tahiti pearl and numerous brilliant-cut diamonds weighing a total of app. 0.58 ct., mounted in 18k white gold. Colour: Top Wesselton-Wesselton (G-H). Clarity: SI. Pearl diam. app. 16 mm. L. app. 63 and 103.5 cm.

DKK 12,000-15,000 / € 1,600-2,000

557

A pair of diamond ear pendants each set with an emerald-cut diamond weighing app. 1.00 ct. encircled by numerous brilliant-cut diamonds, totalling app. 2.22 ct., mounted in 18k white gold. Colour: Wesselton-Crystal (H-J). Clarity: VS-SI1. L. app. 2.5 cm. Germany, circa 2010. (2)

DKK 30,000-40,000 / € 4,000-5,350

558

A diamond ring set with numerous brilliant-cut diamonds weighing a total of app. 2.98 ct., mounted in 18k white gold. Colour: Top Wesselton (F-G). Clarity: VS. Size 55.5. Circa 2009.

DKK 15,000-18,000 / € 2,000-2,400

559

A diamond ring set with numerous baguette and brilliant-cut diamonds weighing a total of app. 1.44 ct., mounted in 18k white gold. Colour: Wesselton (H). Clarity: VS-P1. Size 53.

DKK 10,000-15,000 / € 1,350-2,000

560

An Art Deco diamond ring set with an old-cut diamond weighing app. 1.00 ct. flanked by old-cut diamonds, totalling app. 2.20 ct., mounted in platinum. Colour: Crystal-Top Cape (J-K). Clarity: P1. App. size 55. Circa 1930-40.

Accompanied by case.

DKK 8,000-10,000 / € 1,050-1,350

561

A diamond bracelet set with numerous brilliant and baguette-cut diamonds weighing a total of app. 10.00 ct., mounted in 18k white gold. Colour: Top Wesselton-Wesselton (G-H). Clarity: VS-SI. L. app. 18 cm. Circa 1950.

DKK 40,000-50,000 / € 5,350-6,700



556



557



558



559



560



561



562

RUBEN SVART

A diamond necklace set with numerous briolette-cut cognac coloured diamonds weighing app. 38.70 ct., mounted in 14k gold. L. app. 45 cm. Circa 2011.

DKK 15,000-18,000 / € 2,000-2,400

563

A pair of spinel and diamond ear pendants each set with a cushion-cut lavender spinel weighing a total of app. 3.24 ct., a radiant-cut diamond weighing a total of app. 0.80 ct. and numerous brilliant-cut diamonds weighing a total of app. 0.39 ct., mounted in 18k white gold. Colour: River-Top Wesselton (E-F). Clarity: VVS. L. app. 2 cm. (2)

Cut grade: Excellent-cut. DKK 25,000 / € 3,350

564

A diamond ring set with a brilliant-cut fancy cognac coloured diamond weighing app. 1.10 ct. encircled and flanked by numerous brilliant-cut white diamonds weighing a total of app. 1.20 ct., mounted in 14k white gold. Colour: Top Wesselton (G). Clarity: VS-SI. Size 49.5.

DKK 15,000-18,000 / € 2,000-2,400

565

A pair of diamond ear pendants each set with numerous rose and single-cut diamonds weighing a total of app. 8.50 ct., mounted in gold and oxidized silver. L. app. 6.2 mm. Circa 1980. (2)

DKK 20,000-25,000 / € 2,700-3,350

566

SHAMBALLA

A diamond bracelet "Royal Bracelet" set with numerous brilliant-cut black diamonds weighing a total of app. 1.98 ct., mounted in 18 black rhodinated white gold. L. app. 17.5 cm.

Retail price DKK 45,500.

"In 2008 an interview of a young lady was published. Formerly an Australian, this was her interview as Crown Princess Mary of Denmark. On her arm, discreet and elegant, was a Shamballa Jewels bracelet with a pavé bead of Argyle Pink diamonds from Australia – a subtle combination of her two worlds. Over the years Her Royal Highness has had her bracelet re-designed, with the Argyle Pink diamond pavé staying constant. First designed as a classic braided Shamballa bracelet with Tahitian pearls, it was later customised into an orb bracelet. Today Her Royal Highness wears her Argyle pink diamond pavé as a Shamballa Jewels Royal Bracelet. It beautifully illustrates the versatility of our pavé beads and the customisation possibilities they offer"

DKK 15,000-18,000 / € 2,000-2,400

567

A diamond ring set with a brilliant-cut natural Light Yellow diamond weighing app. 2.03 ct. encircled by numerous brilliant-cut diamonds weighing a total of app. 0.29 ct., mounted in 18k white gold. Colour: Top Wesselton (F-G). Clarity: VVS-VS. Size 53. Milan, circa 2016.

DKK 30,000-35,000 / € 4,000-4,700



562



563



564



565



566



567



568

A ruby and topaz necklace with ruby beads and circular-cut topazes with a ruby and diamond pendant set with onyx, numerous ruby beads weighing a total of app. 75.83 ct. and brilliant-cut diamonds weighing a total of app. 0.63 ct., mounted in 18k white gold. Bead diam. app. 3-5 mm. L. necklace app. 92 cm. L. pendant app. 7.5 cm. (2)

DKK 15,000 / € 2,000

569

A pair of diamond ear pendants each set with numerous brilliant-cut diamonds weighing a total of app. 2.48 ct., mounted in 18k white gold. Colour: Top Wesselton (F-G). Clarity: VVS-VS. L. app. 4 cm. (2)

DKK 20,000-25,000 / € 2,700-3,350

570

BULGARI

A diamond solitaire ring set with a brilliant-cut diamond weighing app. 1.42 ct., mounted in 18k white gold. Colour: Crystal (J). Clarity: VS. Signed Bulgari CM 1.42. Size 49.5.

Accompanied by original case. DKK 50,000 / € 6,700

571

A diamond ring set with numerous brilliant-cut diamonds weighing a total of app. 1.60 ct., mounted in 18k white gold. Colour: Top Wesselton (F-G). Clarity: VVS-VS. App. size 52.

DKK 10,000-12,000 / € 1,350-1,600

572

A diamond ring set with numerous brilliant-cut diamonds weighing a total of app. 0.80 ct., mounted in 18k white gold. Colour: Top Wesselton (G). Clarity: VVS-VS. Size 55.5.

Cut grade: Excellent-cut.

DKK 10,000 / € 1,350

573

SHAMBALLA

A diamond bracelet "Tennis Bracelet" set with numerous brilliant-cut diamonds weighing a total of app. 0.34 ct., mounted in 18k white gold. Colour: Top Wesselton (G). Clarity: VS. L. app. 17.5 cm. Retail price DKK 81,000.

"Shamballa Jewels revisits the Tennis bracelet and presents it in a contemporary style. The beads are hinged together to drape luxuriously around the wrist. A dazzling constellation of diamond studded gold beads form this bracelet - crowned by one large Star of Shamballa bead at the center, which also functions as the lock".

DKK 25,000 / € 3,350



568



569



570



571



572



573



574

A diamond necklace set with numerous brilliant-cut diamonds weighing a total of app. 1.56 ct., mounted in 18k white gold. Colour: Top Wesselton (F-G). Clarity: VS-P1. L. app. 83 cm. *DKK 15,000 / € 2,000*

575

A pair of diamond ear pendants each set with numerous brilliant-cut diamonds weighing a total of app. 7.30 ct., mounted in 14k white gold. Colour: Top Wesselton-Wesselton (G-H). Clarity: SI-P1. L. app. 7 cm. (2) *DKK 30,000-35,000 / € 4,000-4,700*

576

A pair of diamond ear studs each set with a brilliant-cut diamond weighing a total of app. 1.50 ct., mounted in 14k white gold. Colour: Crystal-Top Cape (J-K). Clarity: P1. (2)
Accompanied by case.
DKK 18,000-20,000 / € 2,400-2,700

577

A diamond eternity ring set with numerous brilliant-cut diamonds weighing a total of app. 2.14 ct., mounted in 18k white gold. Colour: Top Wesselton (F-G). Clarity: VVS-VS. Size 53.
DKK 18,000-20,000 / € 2,400-2,700

578

A diamond ring set with three old-cut diamonds weighing a total of app. 2.25 ct., mounted in platinum. Colour: Wesselton-Top Crystal (H-I). Clarity: P1. Size 53. Circa 1900. *DKK 10,000 / € 1,350*

579

A diamond bracelet set with numerous brilliant-cut diamonds weighing a total of app. 2.10 ct., mounted in 18k white gold. Colour: Top Crystal-Crystal (I-J). Clarity: SI-P1. L. app. 18.5 cm.
DKK 10,000-12,000 / € 1,350-1,600



574



575



576



577



578



579



580

A Tahiti pearl necklace set with numerous cultured Tahiti pearls and a clasp of 18k white gold. Pearl diam. app. 13-14 mm. L. app. 47 cm.

DKK 12,000-15,000 / € 1,600-2,000

581

A pair of coral and diamond ear pendants each set with a pear-shaped cabochon coral and numerous brilliant-cut diamonds weighing a total of app. 0.60 ct., mounted in 18k white gold. Colour: Wesselton-Top Crystal (H-I). Clarity: SI-P1. L. app. 7.3 cm. Circa 1970-80. (2)

DKK 10,000-12,000 / € 1,350-1,600

582

An Art Deco diamond double clip/brooch set with numerous brilliant and baguette-cut diamonds weighing a total of app. 11.00 ct., mounted in platinum. Colour: Top Wesselton-Top Crystal (F-I). Clarity: VS-SI. L. app. 3.2 x 7.0 cm. Weight app. 43.5 g. London, circa 1920-30.

Accompanied by case and copy of receipt from McKenna & Co., London 2015.

Retail price app. GBP 17,500.

DKK 30,000-50,000 / € 4,000-6,700

583

SIXTUS THOMSEN & SØN

A diamond solitaire ring set with a brilliant-cut diamond weighing app. 1.44 ct., mounted in 14k white gold. Colour: Top Wesselton (G). Clarity: VVS2. App. Size 50.

Accompanied by E.G.L certificate no. AI 400289.

DKK 25,000-30,000 / € 3,350-4,000

584

A diamond ring set with a brilliant-cut diamond weighing app. 1.85 ct. flanked by numerous brilliant-cut diamonds weighing app. 1.00 ct., totalling app. 2.85 ct., mounted in 18k white gold. Colour: Wesselton-Crystal (H-J). Clarity: VS-P1. Size 54.5. Circa 2005. *DKK 15,000-20,000 / € 2,000-2,700*

585

A diamond bracelet set with numerous brilliant-cut diamonds weighing a total of app. 10.30 ct., mounted in 18k white gold. Colour: Top Wesselton (F-G). Clarity: VS-SI. L. app. 17 cm.

DKK 100,000 / € 13,500



580



581



582



583



584



585



586

A South Sea pearl necklace with numerous cultured South Sea pearls and a clasp set with numerous brilliant-cut diamonds, mounted in 14k white gold. Pearl diam. app. 12-16 mm. L. app. 42.5 cm.

DKK 20,000-25,000 / € 2,700-3,350

587

CHAUMET

A pair of diamond ear clips each set with numerous brilliant-cut diamonds weighing a total of app. 7.40 ct., mounted in platinum and 18k white gold. River-Top Wesselton (E-F). Clarity: VVS-VS. L. app. 4.8 cm. (2)

DKK 60,000 / € 8,050

588

A pair of South Sea pearl and diamond ear pendants each set with a cultured Australian South Sea pearl flanked by a brilliant-cut diamond weighing a total of app. 0.83 ct., mounted in 18k white gold. Colour: Cape (M). Clarity: VVS-VS. Pearl diam. app. 14.5 mm. L. app. 2.0 cm. (2)

DKK 15,000 / € 2,000

589

GEORG JENSEN & WENDEL

A diamond eternity ring set with numerous marquise-cut diamonds weighing a total of app. 0.88 ct., mounted in 18k white gold. colour: Top Wesselton (F-G). Clarity: VVS-VS. Size 51.

Accompanied by original case.

DKK 10,000-12,000 / € 1,350-1,600

590

A diamond eternity ring set with numerous brilliant-cut diamonds weighing a total of app. 1.20 ct., mounted in 18k white gold. Colour: River-Top Wesselton (E-F). Clarity: VS. App. size 57.

DKK 15,000 / € 2,000

591

GEORG JENSEN & WENDEL

An aquamarine and diamond ring set with an emerald-cut aquamarine flanked by baguette-cut diamonds weighing a total of app. 0.40 ct., mounted in 18k white gold. Colour: Top Wesselton (G). Clarity: VVS. App. size 51.5. Circa 1970-80.

Accompanied by original case.

DKK 10,000-12,000 / € 1,350-1,600

592

A diamond bracelet set with numerous baguette and brilliant-cut diamonds weighing a total of app. 7.00 ct., mounted in 18k white gold. Colour: Top Wesselton (F-G). Clarity: VS-SI. L. app. 17 cm. Circa 1960.

DKK 18,000-20,000 / € 2,400-2,700



586



587



588



589



590



591



592



593
GUCCI

A necklace of 18k gold. L. app. 63 cm. Weight app. 68 g.

Accompanied by original case.

DKK 10,000-15,000 / € 1,350-2,000

594

A pair of diamond ear pendants "Creoles" each set with numerous brilliant-cut diamonds weighing a total of app. 1.44 ct., mounted in 18k gold. Colour: Wesselton-Top Crystal (H-I). Clarity: SI-P1. Diam. app. 3.5 cm. (2)

DKK 12,000 / € 1,600

595

A pair of sapphire and diamond ear pendants each set with numerous trapeze-cut sapphires and baguette-cut diamonds weighing a total of app. 2.50 ct., mounted in 14 and 18k gold. Colour: Top Wesselton (G-H). Clarity: VVS-VS. L. app. 2.3 cm. Circa 1990. (2)

DKK 8,000-10,000 / € 1,050-1,350

596

OLE LYNGGAARD

A pair of "Flower" diamond ear clips in the shape of flowers each set with a brilliant-cut diamond weighing a total of app. 0.10 ct., mounted in 14k gold and white gold. Colour: Top Wesselton (G). Clarity: VS. Total weight app. 27 g. Design Charlotte Lynggard. (2)

Accompanied by original cases.

DKK 8,000-10,000 / € 1,050-1,350

597

NANNA DITZEL

A bangle of 18k gold. Design no. 1111. Diam. app. 6.5 cm. Weight app. 73 g. Georg Jensen, after 1945.

DKK 20,000 / € 2,700

598

An Art Deco sapphire and diamond bracelet set with numerous circular-cut sapphires and old-cut diamonds weighing a total of app. 1.45 ct., mounted in 14k gold and platinum. Colour: Top Crystal-Top Cape (I-K). Clarity: SI-P1. L. app. 16.5 cm. Circa 1920.

Accompanied by original case and extra link.

DKK 10,000-12,000 / € 1,350-1,600



593



594



595



596



597



598



599

A diamond necklace set with numerous brilliant-cut diamonds weighing a total of app. 10.78 ct., mounted in 18k white gold. Colour: Wesselton (H). Clarity: VVS-SI. L. app. 39.5 cm. Milan, circa 2015.

DKK 60,000-70,000 / € 8,050-9,400

600

A pair of sapphire and diamond ear clips each set with numerous circular-cut sapphires and brilliant-cut diamonds weighing a total of app. 3.40 ct., mounted in 18k white gold. Colour: Top Wesselton (F-G). Clarity: VS-SI. Diam. app. 2.5 cm. Circa 1960.

(2) *DKK 10,000-12,000 / € 1,350-1,600*

601

A pair of sapphire and diamond ear clips each set with an oval-cut sapphire encircled by numerous brilliant-cut diamonds weighing a total of app. 0.70 ct., mounted in 18k white gold. Colour: Top Wesselton (F-G). Clarity: SI-P1. L. app. 1.2 cm. (2)

DKK 10,000-12,000 / € 1,350-1,600

602

A sapphire and diamond ring set with an oval-cut sapphire weighing app. 2.95 ct. encircled by numerous old-cut diamonds weighing a total of app. 1.65 ct., mounted in 18k white gold. Colour: Wesselton-Top Crystal (H-I). Clarity: SI-P1. Size 59. Circa 1950.

DKK 15,000 / € 2,000

603

OLE LYNNGAARD

A sapphire and diamond ring set with an oval-cut sapphire and numerous old-cut diamonds weighing a total of app. 0.56 ct., mounted in 14k white gold. Colour: Crystal-Top Cape (J-K). Clarity: SI-P1. Size 57.

DKK 8,000 / € 1,050

604

An Art Deco diamond brooch set with an old-cut diamond weighing app. 0.80 ct. and numerous old-cut diamonds weighing a total of app. 3.00 ct., totalling app. 3.80 ct., mounted in platinum. Colour: Top Wesselton-Top Crystal (G-I). Clarity: VS-P1. L. app. 6.4 x 2.5 cm. England, circa 1920-30.

Accompanied by original case from Skinner & Co., 34 Old Bond Street, London.

DKK 20,000-25,000 / € 2,700-3,350

605

A diamond bracelet set with numerous brilliant-cut diamonds weighing a total of app. 5.21 ct., mounted in 18k white gold. Colour: Top Wesselton-Wesselton (G-H). Clarity: SI-P1. L. app. 18.5 cm.

DKK 30,000-40,000 / € 4,000-5,350



599



600



601



602



603



604



605



606

A diamond necklace set with numerous brilliant-cut diamonds weighing a total of app. 11.84 ct., mounted in 18k white gold. Colour: Top Wesselton-Wesselton (F-H). Clarity: VVS-VS. L. app. 42 cm. Antwerp, circa 2016.

Cut quality: Excellent-cut.

DKK 80,000-100,000 / € 10,500-13,500

607

A diamond ring set with numerous brilliant-cut diamonds weighing a total of app. 1.39 ct., mounted in 18k white gold. Colour: Top Wesselton (F-G). Clarity: VVS-VS. Size 56. *DKK 20,000 / € 2,700*

608

HARTMANN'S

A diamond ring set with a marquise-cut diamond weighing app. 0.66 ct. encircled and flanked by numerous brilliant-cut diamonds, totalling app. 1.24 ct., mounted in 18k white gold. Colour: River-Top Wesselton (E-G). Clarity: VVS1-VS. Size app. 60. 2016.

Accompanied by case and certificate from Hartmann's with an insurance valuation of DKK 83,000.

DKK 10,000-15,000 / € 1,350-2,000

609

SHAMBALLA

A diamond bracelet "Royal Bracelet" set with numerous brilliant-cut diamonds weighing a total of app. 1.88 ct., mounted in 18k white gold. Colour: Top Wesselton (G). Clarity: VS. L. app. 17.5 cm

Retail price DKK 82,000.

Accompanied by certificate from Shamballa.

DKK 25,000 / € 3,350

610

A diamond solitaire ring set with a brilliant-cut diamond weighing app. 2.00 ct., mounted in platinum. Colour: Top Wesselton (F). Clarity: VS. Size 49.5.

DKK 60,000-70,000 / € 8,050-9,400

611

KLARLUND

A diamond eternity ring set with numerous brilliant-cut diamonds weighing a total of app. 1.17 ct., mounted in 18k white gold. Colour: Top Wesselton (F-G). Clarity: VVS. Size 61.

Accompanied by case and copy of valuation from Stenstrup Jeweller from 1999 and 2011 of DKK 48,600.

DKK 8,000-10,000 / € 1,050-1,350

612

A diamond bracelet set with numerous brilliant-cut diamonds weighing a total of app. 4.72 ct., mounted in 18k white gold. Colour: Top Wesselton (F-G). Clarity: SI. L. app. 17.5 cm. Circa 2017.

Accompanied by certificate no. 01 024 140317 005 from International Diamond Laboratories, 2017.

DKK 25,000-30,000 / € 3,350-4,000



606



607



608



609



610



611



612



613

An Art Deco emerald and diamond jewellery set comprising a brooch set with a pear-shaped emerald and numerous single and old-cut diamonds weighing a total of app. 1.80 ct. and a ring set with an emerald-cut emerald encircled by numerous old-cut diamonds weighing a total of app. 0.65 ct., mounted in platinum. L. brooch app. 8.8 cm. Ring size 52. Total weight app. 24 g. Circa 1920-30. (2)
Accompanied by case.

DKK 10,000-15,000 / € 1,350-2,000

614

A pair of emerald and diamond ear pendants each set with an emerald-cut emerald weighing a total of app. 2.20 ct. and numerous brilliant-cut diamonds weighing a total of app. 2.25 ct., mounted in 18k white gold. Colour: Wesselton (H). Clarity: SI-P. L. app. 5.0 cm. (2)

DKK 18,000-20,000 / € 2,400-2,700

615

A. DRAGSTED

A emerald and diamond ring set with an emerald-cut emerald weighing app. 1.95 ct. encircled by numerous old-cut diamonds weighing a total of app. 1.50 ct., mounted in 18k white gold. Colour: Top Wesselton-Wesselton (G-H). Clarity: VS-SI. Size 51. Circa 1930-40.

DKK 10,000-15,000 / € 1,350-2,000

616

A diamond brooch/pendant set with numerous rose and old-cut diamonds, mounted in 14k gold and white gold. L. app. 8 cm. Weight app. 42 g. Presumably Russia, circa 1880-90.

Accompanied by case.

DKK 10,000-12,000 / € 1,350-1,600

617

A Belle Époque emerald and diamond brooch set with numerous circular and square cut emeralds and old-cut diamonds, mounted in platinum. Colour: Wesselton (H). Clarity: SI-P1. L. app. 5 cm. Circa 1900.

DKK 8,000-10,000 / € 1,050-1,350

618

An emerald and diamond bracelet set with numerous rectangular-cut emeralds and brilliant-cut diamonds weighing a total of app. 1.50 ct., mounted in 18k white gold. L. app. 18 cm. Circa 1930-40.

DKK 30,000-40,000 / € 4,000-5,350



613



614



616



615



617



618



619

A South Sea pearl necklace set with numerous cultured Australian South Sea pearls and a clasp of 18k white gold. Pearl diam. app. 14.0-16.5 mm. L. app. 46 cm. *DKK 15,000 / € 2,000*

620

A pair of Mabé pearl and diamond ear clips set with cultured Mabé pearls and brilliant and single-cut diamonds, mounted in 14k gold. Diam. app. 17.5 mm. (2) *DKK 8,000-10,000 / € 1,050-1,350*

621

TIFFANY & CO.

A diamond brooch set with numerous brilliant-cut diamonds weighing a total of app. 0.27 ct., mounted in 18k gold. Colour: Top Wesselton-Wesselton (G-H). Clarity: SI. L. app. 3.8 cm. Circa 1950.

Accompanied by original case.

DKK 12,000-15,000 / € 1,600-2,000

622

A pearl and diamond brooch set with numerous cultured pearls and rose and old-cut diamonds weighing a total of app. 0.85 ct., mounted in 18k gold and enamel. Colour: Wesselton (H). Clarity: VS-SI. Diam. app. 3.8 cm. Circa 1930.

DKK 8,000-10,000 / € 1,050-1,350

623

BUCHERER

A ladies diamond wristwatch set with numerous single-cut diamonds, mounted in 18k gold and white gold. Mechanical movement with manual wind, caliber 212.

White dial with white gold index and hands. Integrated bracelet of 18k gold. L. app. 18 cm. Weight app. 64 g. Diam. app. 2.5 cm. Circa 1959-60.

Accompanied by original case.

DKK 10,000-12,000 / € 1,350-1,600

624

A bracelet of 14k gold. L. app. 19 cm. Weight app. 54 g. *DKK 8,000-10,000 / € 1,050-1,350*



619



620



621



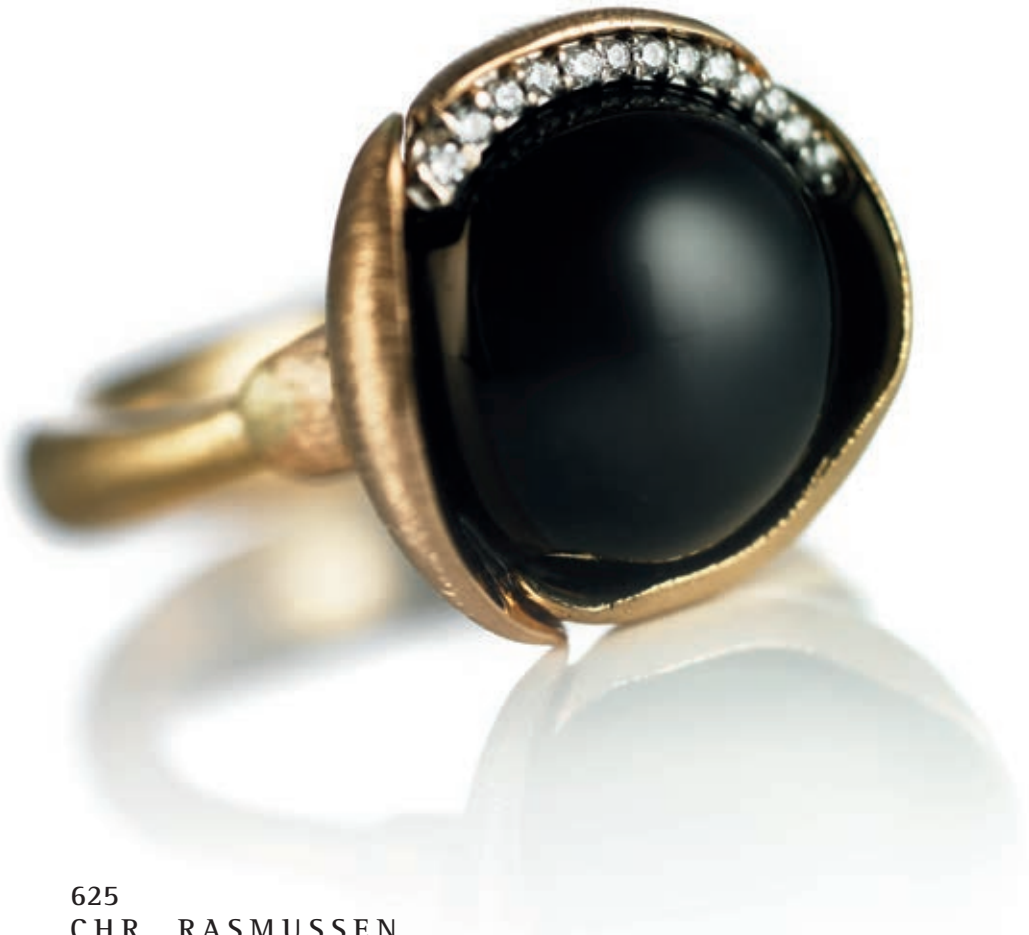
622



623



624



625

CHR. RASMUSSEN

A necklace of 18k gold and white gold with beads of white gold. L. app. 100 cm. Weight app. 70 g. Circa 1950-60. *DKK 10,000-12,000 / € 1,350-1,600*

626

GEORG JENSEN & WENDEL

A tourmaline and diamond ring set with an emerald-cut tourmaline encircled by numerous brilliant-cut diamonds weighing a total of app. 0.60 ct., mounted in 18k white gold. Colour: Top Wesselton (F-G). Clarity: VVS. App. size 53. Circa 1980.

Accompanied by original jewellery bag.

DKK 10,000-12,000 / € 1,350-1,600

627

EKVALL & ROSGAARD

A diamond ring set with numerous brilliant-cut diamonds, mounted in 18k gold. Colour: River (D-E). Clarity: VVS-SI. Size 54.5. Weight app. 20 g.

DKK 10,000-15,000 / € 1,350-2,000

628

OLE LYNGGAARD

A "Lotus" ring set with a cabochon onyx and numerous brilliant-cut diamonds weighing a total of app. 0.05 ct., mounted in 18k gold and pink gold. Colour: Top Wesselton (G). Clarity: VS. Size 56. Design Charlotte Lynggaard.

Retail price DKK app. 31,500. DKK 15,000 / € 2,000

629

A diamond bracelet set with numerous brilliant-cut diamonds weighing a total of app. 7.33 ct., mounted in 18k gold. Colour: Top Cape-Cape (L-M). Clarity: VVS-VS. L. app. 17.5 cm.

Cut grade: Excellent-cut.

DKK 40,000-50,000 / € 5,350-6,700

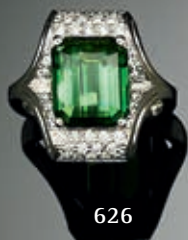
630

A bracelet of 14k gold. L. app. 21 cm. Weight app. 81 g.

DKK 8,000-10,000 / € 1,050-1,350



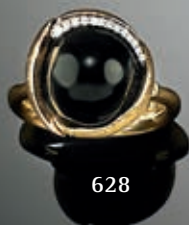
625



626



627



628



629

630



631

631

CHANEL

"Tall Double Flap" bag made of bluish black quilted calf leather with golden hardware, double chain strap, cc turn lock on the front, an open pocket on the back, one large compartment with three open pockets, a zipped pocket inside and bordeaux leather lining inside. App. 20 x 25 x 8 cm.

Accompanied by *Carte D'Authenticité*.

DKK 15,000 / € 2,000

632

CHANEL

A "Chocolate Bar" shoulder bag of black quilted leather with golden hardware, double chain strap and two interior pockets. L. app. 30 x 22 x 10 cm.

Accompanied by original dust bag and *Carte D'Authenticité*. DKK 10,000-12,000 / € 1,350-1,600



632



633

633

CHANEL

A "Hobo" bag made of black quilted caviar leather with golden hardware, one short handle, cc turn lock, an open pocket on the back and one large compartment with an open pocket and a zipped pocket inside. App. 24 x 30 x 11 cm.

Accompanied by *Carte D'Authenticité*.

DKK 15,000-18,000 / € 2,000-2,400



634

634

CHANEL

A "Surpique Flab Bag" of black lambskin with contrasting beige stiches, double chain strap, bronze toned brushed hardware, CC lock, one exterior and two interior pockets. L. app. 26 x 16 x 6 cm.

A "Surpique Flab Bag" of black lambskin with contrasting beige stiches, double chain strap, CC lock and one exterior and two interior pockets.

Accompanied by original case, dust bag and Carte D'Authenticité. DKK 10,000-15,000 / € 1,350-2,000



635

635

CHANEL

A "Tweed Boucle Knitting Bag" of black tweed with leather piping and palladium chain strap and handle. L. app. 32 x 33 cm.

Accompanied by original case, dust bag and Carte D'Authenticité. DKK 8,000-10,000 / € 1,050-1,350



636

636

CHANEL

A black leather bag with shoulder strap, double stitching, two interior pockets, silver toned hardware and CC clasp. L. app. 27 x 22 x 10 cm.

Accompanied by original case, dust bag and Carte D'authenticité. DKK 10,000-15,000 / € 1,350-2,000



637

637
HERMÈS

A "Kelly" 35 of orange Togo leather with shoulder strap, key, key chain, palladium padlock and mounting. 2008.

Accompanied by original case, rain cover, bag, and dust bag.

DKK 25,000 / € 3,350



638

638
HERMÈS

A "Birkin" 40 of black Togo leather with key, key strap and palladium padlock and hardware. 2003.

DKK 40,000-50,000 / € 5,350-6,700



639

639
HERMÈS

A "Birkin" 35 of taupe Togo leather with key, key strap and palladium padlock and hardware. 2011.

DKK 40,000-50,000 / € 5,350-6,700



640

640
HERMÈS

A "Picotin Lock" bag of taupe Togo leather with palladium hardware and key. L. app. 31 x 30 x 24 cm. 2009.

Accompanied by original case and dust bag.

DKK 12,000-15,000 / € 1,600-2,000



641

641

CHANEL

A "Double Flap" bag of quilted dark blue lambskin with double chain strap, golden hardware and one exterior and one interior compartment with two pockets. L. app. 26 x 16 x 6 cm.

Accompanied by original dust bag.

DKK 10,000-15,000 / € 1,350-2,000

642

CHANEL

A "Maxi Jumbo" bag made of black quilted calf leather, gold toned hardware, double chain strap, cc turn lock, an open pocket on the back, one large compartment with a open pocket, a zipped pocket and bordeaux leather lining inside.

App. 22 x 35 x 10 cm.

Accompanied by Carte D'Authenticité.

DKK 15,000-20,000 / € 2,000-2,700



642



644

644

CHANEL

A "Double Flap" bag of quilted brown patent leather with double chain strap and hardware of ruthenium plated metal. L. app. 26 x 16 x 5 cm.

DKK 8,000-10,000 / € 1,050-1,350



643

CHANEL

A drawstring bag in black caviar leather with detachable purse and golden hardware.

L. app. 23 x 26 x 16 cm.

Accompanied by original case and Carte D'Authenticité DKK 8,000-10,000 / € 1,050-1,350

645

CHANEL

A "Timeless" jumbo shopping tote of black caviar leather with two shoulder straps and one interior pocket. L. app. 42 x 31 x 11 cm.

Accompanied by original case, dust bag and Carte D'Authenticité.

DKK 8,000-10,000 / € 1,050-1,350



645

646

CHANEL

A "Grand Shopping Tote" of white caviar leather with double chain strap, three interior and one exterior pocket with palladium hardware.

L. app. 34 x 24 x 13 cm.

Accompanied by original dustbag and Carte D'Authenticité. DKK 15,000-18,000 / € 2,000-2,400



646



647

647

HERMÈS

An "Herbag" 30 of black leather with shoulderstrap, two interchangeable bottoms of black and beige canvas and palladium hardware and padlock. 2001. (2)

Accompanied by original case, bag, dust bag and assembly instructions. DKK 10,000 / € 1,350

648

HERMÈS

A "Kelly" 28 bag of black crocodile (crocodylus porosus, CITES Appendix IIB) with keys, key string, padlock and golden hardware. Accompanied by a shoulder strap.

Items made of crocodile or alligator skin require a CITES export permit in order to be exported from Denmark to a country outside The European Union. Buyers residing outside the European Union are required to obtain this permit. More information is available upon request.

DKK 20,000 / € 2,700



648

649

HERMÈS

A "Mini Kelly Pochette" of brown leather with one interior pocket and palladium hardware. L. app. L. ca. 22 x 13 x 7 cm. 2005.

Accompanied by original case and dust bag.

DKK 15,000-20,000 / € 2,000-2,700



649



650

650

HERMÈS

A "Kelly" 35 of light brown box leather with handle, shoulder strap, key, key strap and golden hardware and padlock. 2001.

Accompanied by original dust bag.

DKK 30,000 / € 4,000



651

651

HERMÈS

A "Kelly Voyage" 50 of light brown suede and leather, with canvas lining, four interior pockets and golden hardware and padlock. L. app. 50 x 32 x 21 cm. 2012.

DKK 30,000 / € 4,000

652

HERMÈS

A "Cabas" bag of black Togo leather with two handles, two detachable interior pockets and palladium hardware, and a removable lobster clasp.

L. app. 35 x 23 x 18 cm.

DKK 8,000-10,000 / € 1,050-1,350



652

653

HERMÈS

An "Herbag" 50 of black leather with shoulder strap, two interchangeable bottoms of black canvas and palladium hardware and padlock.

L. app. 50 x 35 and 50 x 42 cm. 2000. (2)

Accompanied by authenticity card and original dust bag.

DKK 8,000-10,000 / € 1,050-1,350



653

PRINCE HENRIK'S COLLECTION - PART 11

Preview: 21-25 November

Auction: 2 December 2 pm

With a Live Auction on 2 December, it is our pleasure to present for the second time a number of art objects from Prince Henrik's collection of masks and sculptures from Africa as well as jade art from Asia.

The catalogue can be picked up from 21 November at one of our locations in Copenhagen or Aarhus. You can also order it directly from our website.

Read more at bruun-rasmussen.dk



BRUUN RASMUSSEN
AUCTIONEERS OF FINE ART



INDEX

A

A. Lange & Söhne	380
Ancher, Anna	15, 18, 59
Ancher, Michael	31
	32, 33, 60
Anthonissen, Louis Joseph	61
Antonissen, Henricus Josephus	140
Audemars Piguet	419, 424

B

Barbieri, Giovanni Francesco (Il Guercino)	132
Bauve, Mathieu de	169
Bergsøe, Josephine	518
Björck, Oscar	58
Blancpain	415
Bredal, Niels	2
Breitling	383, 384
Brendekilde, H. A.	42, 45
	101, 102, 103
Brizard, Pierre	180
Brøgger, Mikkel	519
Bucherer	551, 623
Bulgari	527, 531, 570
Bylander, Petter Gustav	238
Bøgh, Carl	111

C

Cartier	425, 426, 453
	471, 476, 550
Chanel	631, 632, 633
	634, 635, 636
	641, 642, 643
	644, 645, 646
Chaumet	587
Cresson, Jean- Baptiste	168

D

Dahl, I. C.	9
Daingerfield, Elliott	75
Danish Golden Age painter	76
Degoullons, Jules, attributed to	172
Diehl, Charles-Guillaume	242

Ditzel, Nanna	597
Dragsted, A.	615
Dreyer, Dankvart	78
Drouais, François Hubert	136
Dulong, Marianne	511
Dupré, Jules	73, 74

E

Ebbesen, Lau	523
Eckersberg, C. W.	8, 10
Ekvall & Rosgaard	627
Elliger II, Ottmar	144
Emquies-Holstein	525
Engström, Mathias	304, 307
Exner, Julius	66

F

Fischer, Paul	19, 20
	47, 48, 80
	95, 107, 108
Fog, Astrid	448
Frølich, Lorenz	23
Fürloh, Johan Hugo	311

G

Galle, Claude	205
Galle, Claude, attributed to	281
Gasparski, Kasia	514, 515
Gebauer, Christian David	11
Georg Jensen	446, 447
Georg Jensen & Wendel	454, 489
	589, 591, 626
Girodet de Roussy-Trioison, Anne-Louis	123
Gout, Ralph	191
Griegst, Arje	455, 456, 457
Grimou, Alexis, attributed to	137
Gucci	593
Guinand, Antoine	62

H

Hammershøi, Vilhelm	14, 22
	26, 36, 46

Hansen, Constantin	27, 28
Hartmann's	530, 534, 608
Hellesen, Hanne	70
Henry Grandjean & Cie	445
Hermès	637, 638
	639, 640, 647
	648, 649, 650
	651, 652, 653
Heuer	403
Holm, Just	100
Holm, Niels	153
Holmstrup, V.	490
Holsøe, Carl	13, 37, 39, 49
Hunæus, Andreas	92
HYT	421
Hörner, Johan	121

I

Ilsted, Peter	38, 43
Ince & Mayhew	189
IWC	402, 438

J

Jacobsz, Lambert	135
Jaeger-LeCoultre	422, 423
Jensen, C. A.	53
Jensen, I. L.	54, 55, 67, 72
Jessen, Carl Ludvig	12
Jewellery, Mads Heindorf	521
Joors, Eugène	124
Juel, Jens	5, 71
Juhl-Jørgensen, Marlene	469
Jürgensen, Urban	381, 382

K

Klarlund	611
Kløve, Jytte	520, 522
Krøyer, P. S.	113, 114
Kuhnert, Wilhelm	64

L

la Cour, Janus	65
Larsen, Emanuel	83, 98

INDEX

Larsen, Johannes	85, 86, 87	P		attributed to	150
Larsson, Carl	25, 57	Panerai	410, 411, 412	Scotti, Luigi	154
Laub, Ernst	91	Patek Philippe	385	Shamballa	451, 470
Libert, Georg Emil	84		386, 389, 390		497, 528, 535
Lillie, Joseph Christian, style of	258		391, 392, 427		566, 573, 609
Locher, Carl	29, 30		428, 429, 430	Simonsen, Simon	112
	50, 104, 105		431, 432, 433	Skovgaard, Joakim	3
Lundbye, Johan Thomas	89	Paulsen, Julius	34	Skovgaard, P. C.	51
Lunøe, Sofie	517	Petersen, Carl Ludvig	119	Slott-Møller, Harald	16, 118
Lynggaard, Ole	449, 450	Philippe, Patek	387	Smidth, Hans	120
	465, 467, 468		388, 398, 399	Stenstrup	481
	596, 603, 628	Philipsen, Theodor	90	Stoop, Dirk	130
Løvschal, Lone	526	Pilo, Carl Gustav and workshop	4	Storch, Frederik	122
M		Pram-Henningsen, Christian	79	Svart, Ruben	562
Madsen, Karl	6	Precht, Burchard	156	T	
Maison Millet	245	R		Thomire, Pierre Philippe	208, 234
Marstrand, Wilhelm	56	Raibolini, Francesco di Marco	217	Thomsen & Søn, Sixtus	583
Melbye, Anton	106	Rasmussen, Chr.	625	Thorvaldsen, Bertel	21
Melbye, Vilhelm	82	Rasmussen, I. E. C.	88	Thrane, Jens	146, 147
Menant, François-Claude	222	Rémond, Francois	200	Tiffany & Co.	621
Mercié, Marius Jean Antonin	277	Richardt, Ferdinand	96	Tudor	437
Monies, David	99	Ring, L. A.	41, 44, 52, 81	Tuxen, Laurits	17
Morgan & Sanders	195	Ring, Ole	40, 93	V	
Murillo, Bartolomé Esteban,		Robinson Sykes, Charles	323	Vaccaro, Andrea	134
his circle	127	Roed, Jørgen	110	Vacheron Constantin	420
Møller, I. P.	77	Rolex	375	Vulliamy & Son, attributed	199
Mølsted, Christian	94		376, 377, 378	W	
Mønsted, Peder	35, 63, 68		379, 393, 394	Wadström, Carl Johan	284
	69, 115, 116, 117		395, 396, 397	Walter-Rasmussen, H.	484, 491
N			400, 401, 404	Weylandt, Camilla	516
Nielsen, Evald	328		405, 406, 407	Whitcombe, Thomas	139
Norton, Eardley	192		408, 409, 414	Wyck, Thomas	143
Noyons, Karina	524		434, 435, 436	Z	
O		Roos, Johann Heinrich	125	Zech, Johann, after	226, 227
Omega	373, 374, 413	Rubens, P. P., school of	131	Å	
	416, 417, 418	Russell, George William	109	Åkerblad, Johan	290, 310
Orley, Richard van, attributed to	145	Rémond, Francois	200		
Ortelius, Abraham	152	S			
Orstade, Adriaen van, his circle	128	Schwartz, Frans	24		
		Schütz I, Christian Georg,			



ASIAN ART AND ANTIQUES

29 November, 2 pm



*A Tibetan gilt bronze figure of a lama.
17th-18th century. H. 21.5 cm.
Vurdering: DKK 100,000-150,000 / € 13,500-20,000*



BRUUN RASMUSSEN

AUCTIONEERS OF FINE ART

RUSSIAN ART AND ANTIQUES

29 November, 3:30 pm



*Alexei Alexeievich Harlamoff: A young girl. 1887.
Oil on canvas. 46 x 34 cm.
Vurdering: DKK 250,000-300,000 / € 33,500-40,000*



BRUUN RASMUSSEN

AUCTIONEERS OF FINE ART

Disse købsvilkår udgør Bruun Rasmussen Kunstauktioner A/S ("BRK") købsvilkår for traditionelle auktioner og er gældende fra 1. februar 2017.

BRK kan til enhver tid ændre købsvilkårene.

Ved bud accepterer budgiver/køber at være bundet af de til enhver tid gældende købsvilkår, som fremgår på bruun-rasmussen.dk. Købsvilkårene gælder både i forhold til erhvervsdrivende og forbrugere.

FØR AUKTIONEN

1 VURDERING AF GENSTANDE

1.1 Alle udbudte genstande er vurderet af BRK. Vurderingen er et skøn over det forventede hammerslag, jf. punkt 5.3. Vurderingen er baseret på tidligere salg af samme type genstande og erfaringer hos BRK. Hammerslag kan derfor falde højere eller lavere ud end vurderingen.

2 BESKRIVELSE AF GENSTANDE

- 2.1 Udbudte genstande præsenteres med fotos og beskrivelse i kataloger og på bruun-rasmussen.dk. Beskrivelsen foretages efter bedste overbevisning af BRK og ud fra en nøje undersøgelse efter den på salgstidspunktet herskende opfattelse blandt eksperter.
- 2.2 De udbudte genstande er af en alder og art, der bevirker, at de ofte er behæftede med slitage, mangler, beskadigelser og reparationer. Som udgangspunkt sælges alt som brugte genstande, og derfor indeholder beskrivelsen i kataloget og på bruun-rasmussen.dk ikke en redegørelse for ovenstående punkter eller genstandens stand.
- 2.3 I visse tilfælde vælger BRK at beskrive en genstands oprindelse. Det sker, hvis en tidligere ejer er offentlig kendt, og/eller hvis historien om et tidligere ejerskab belyser genstanden og dens art. Omvendt sker det også, at sådanne informationer udelades fra beskrivelsen, f.eks. for at imødekomme sælgers ønske om diskretion.
- 2.4 Vurderingen og beskrivelsen kan blive revideret forud for auktionen. Ændringer offentliggøres på bruun-rasmussen.dk

3 EFTERSYN

- 3.1 Udbudte genstande udstilles op til auktionen i et showroom hos BRK. Potentielle budgivere opfordres til at se genstanden efter i detaljer og har selv ansvaret for at forvise sig om dens stand på disse eftersyn, hvor der også er mulighed for at rådføre sig hos vurderingssagkyndige.
- 3.2 Hvis en potentiel køber ikke har mulighed for at besigtige genstanden ved selvsyn, kan der i de fleste tilfælde udfærdiges en konditionsrapport. Beskrivelsen heri er foretaget efter BRK's bedste overbevisning, men er ikke baseret på videnskabelige undersøgelser. En konditionsrapport tjener blot som identifikation og er ment som en hjælp til budgivere, der ikke selv har mulighed for at besigtige genstanden på eftersynet.

UNDER AUKTIONEN

4 BRK'S ROLLE

- 4.1 Salget af en genstand formidles af BRK på vegne af sælger. BRK afhænder altid udbudte genstande til den højst mulige pris under budgivningen.
- 4.2 Udbudte genstande kan have en med sælger aftalt mindstpris, hvorunder den ikke kan sælges. Denne pris er fortrolig.
- 4.3 De traditionelle auktioner overværes af en af Justitsministeriet beskikket auktionsleder, der sikrer, at auktionerne går retmæssigt for sig.

5 BUDGIVNING

- 5.1 Auktionerne afvikles i danske kroner. De tilnærmelsesvis beløb i euro/US dollar vil blive oplyst på skærme i auktionssalen og i øvrigt på opfordring.
- 5.2 Auktionarius bestemmer overbuds størrelse og i hvilket tempo, auktionen afvikles. Overbud stiger normalt med 5 % - 10 % i forhold til det foregående bud. Normalt sælges der 50-100 katalognumre i timen.
- 5.3 Hammerslag betegner både det forhold, at auktionarius slår med hammeren og derved markerer budgivningens afslutning, og den pris (budsum), den udbudte genstand sælges til. Se punkt 7 vedrørende beløb, der tillægges hammerslaget.
- 5.4 Køber er den budgiver, der opnår hammerslag. Ved hammerslaget indgås på baggrund af disse købsvilkår en bindende købs-/salgsaftale.
- 5.5 Bydes på andres vegne, hæfter budgiver som selvskyldnerkautionist for handlen.
- 5.6 Genstande købes som beset, og køber har uanset budtype ingen fortrydelsesret, heller ikke efter forbrugeraftaleloven.
- 5.7 Budgiver skal efter anvisninger fra BRK identificere sig og dokumentere sin betalingsdygtighed, f.eks. ved registrering af gyldigt betalings-/kreditkort, bankgaranti eller indbetaling af depositum.
- 5.8 BRK kan nægte at acceptere et bud, hvis en tilstrækkelig sikkerhed for betaling mangler, eller hvis budgiver tidligere har misligholdt betalingsforpligtigelser ved køb hos BRK.
- 5.9 Auktionslederen træffer i samråd med auktionarius afgørelse i alle tvivlstilfælde omkring budgivningen.

6 BUDTYPER

- 6.1 Der er følgende muligheder for at afgive bud:

PERSONLIGT FREMMØDE:

Registrering og udlevering af bydeskilt foregår ved indgangen til auktionssalen. Når budgiver ønsker at byde, signaleres dette til auktionarius ved at række bydeskiltet i vejret og tydeligt fremvise dets nummer.

KOMMISSIONSBUD:

Det ønskede maksimale bud kan afgives via bruun-rasmussen.dk frem til auktionens start eller pr. e-mail, fax eller telefon, så budet er modtaget senest 24 timer forud for auktionens start. En kommissionær byder på budgivers vegne inden for rammerne af det ønskede maksimalbud og vil altid afgive lavest muligt overbud.

TELEFONBUD:

I forhold til visse genstande er der mulighed for at blive ringet op af en medarbejder fra BRK, der vil byde på budgivers vegne under auktionen. Servicen kan bestilles via bruun-rasmussen.dk indtil tre timer for auktionens start.

LIVE BIDDING:

Det er muligt at følge auktionen live og byde med via bruun-rasmussen.dk

FORAUKTION:

Visse traditionelle auktioner indledes med en net-auktion. De højeste bud på net-auktionen danner udgangspunktet på den efterfølgende traditionelle auktion.

EFTER AUKTIONEN

7 BELØB, DER TILLÆGGES HAMMERSLAGET

- 7.1 I tillæg til hammerslaget, jf. punkt 5.3, skal køber for den enkelte genstand betale købersalær og, hvis betingelserne er opfyldt, de øvrige beløb, der er nærmere beskrevet nedenfor. Det samlede beløb, som køber skal betale til BRK, benævnes "købesummen".
- 7.1.1 Købersalær: Hammerslaget tillægges et salær til BRK. På de traditionelle auktioner udgør salæret 24 % af hammerslaget + moms af salæret, i alt 30 %. For frimærker og mønter udgør salæret 20 % af hammerslaget + moms af salæret, i alt 25 %.
- 7.1.2 "LIVE bidding": BRK's egen "LIVE bidding"-software via bruun-rasmussen.dk er gratis at benytte for budgivere. Benyttes en "LIVE bidding"-software fra tredje part, tillægges købersalæret en afgift på 3 % plus moms, der videregives til tredje part i sin helhed.
- 7.1.3 Fuldmoms: Visse genstande handles efter de gældende regler om fuldmoms. Her beregnes der moms på 25 % af både hammerslag og salær. Disse genstande er i beskrivelsen i kataloget og på bruun-rasmussen.dk mærket med symbolet "*" eller med teksten: "Dette emne handles i fuldmoms".
- 7.1.4 Kunstnerafgift: Ifølge dansk lovgivning om ophavsret skal der opkræves kunstnerafgift (følgeretsvederlag) for værker af nyere danske og visse udenlandske kunstnere, som enten er nulevende eller ikke har været døde i mere end 70 år. Kunstnerafgiften opkræves på vegne af VISDA. Disse værker er i kataloget mærket med "ARR" (Artist's Resale Right) og på bruun-rasmussen.dk med teksten "Dette emne er belagt med kunstnerafgift". Kunstnerafgiften tillægges hammerslaget + salær (ekskl. moms), når beløbet overstiger 300 euro, som angivet nedenfor:

Hammerslag + salær (ekskl. moms)	Betalingsssats
300 - 50.000 euro	5%
50.000 - 200.000 euro	3%
200.000 - 350.000 euro	1%
350.000 - 500.000 euro	0.5%
over 500.000 euro	0.25%

Kunstnerafgiften kan ikke overstige 12.500 euro (ekskl. moms) for den enkelte genstand. Afgiften skal betales i danske kroner, og omregningskursen (EUR/DKK) fastsættes af VISDA.

- 7.1.5 Betalings-/kreditkortgebyr: BRK forbeholder sig ret til at opkræve de af indløsningselskaberne pålagte betalings-/kreditkortgebyrer. Satserne fremgår ved budgivning via bruun-rasmussen.dk og ved betaling.

8 BETALINGSFRIST

- 8.1 Købesummen forfalder til betaling ved hammerslaget, og køber har herefter otte dage til at betale købesummen til BRK.

9 BETALINGSMÅDER

- 9.1 Betaling kan ske på følgende måder:

A: MED BETALINGS-/KREDITKORT (Dankort, Visa, MasterCard, Diners Club, China UnionPay og JCB) eller kontant (op til 50.000 kr.) i auktionssalen eller efterfølgende i en afdeling hos BRK. Bemærk, at vi ikke modtager 500-eurosedler.

B: MED BETALINGS-/KREDITKORT (Dankort, Visa, MasterCard, Diners Club og JCB) på bruun-rasmussen.dk under købers personlige side.

C: VIA BANKOVERFØRSEL til BRK's konto i Danske Bank: 4183 4310970638 · Swift/BIC: DABADKKK · IBAN: DK4130004310970638.

10 MOMSFRITAGELSE, -BETALING OG -DEPONERING

- 10.1 Visse købere kan vælge hvilken momstype, der skal være gældende for handlen. Valget skal meddeles BRK senest to hverdage efter købet og kan ikke omgøres.

A: Momsregistrerede virksomheder i Danmark kan vælge, at handlen skal ske efter reglerne om fuldmoms, jf. punkt 7.1.3.

B: Momsregistrerede virksomheder i et andet EU-land kan fritages for dansk moms, når det kan dokumenteres, at genstanden er transporteret til den udenlandske adresse, som køber har oplyst over for BRK, og som er anført på fakturaen. I sådanne tilfælde skal der afregnes moms efter de gældende regler i det land, hvor køber er momsregistreret. Det tilrådes at søge oplysning hos de lokale myndigheder. Køber kan undlade at gøre brug af muligheden for momsfrigatelse og i stedet betale dansk brugtmoms/fuldmoms.

C: Købere med bopæl uden for EU kan fritages for dansk moms, når det kan dokumenteres, at genstanden er transporteret ud af EU. BRK udsteder så vidt muligt og mod gebyr de fornødne eksportpapirer, som skal fremvises ved toldmyndighederne. Køber kan undlade at gøre brug af muligheden for momsfrigatelse og i stedet betale dansk brugtmoms/fuldmoms.

- 10.2 Momsregistrerede virksomheder i et andet EU-land og købere med bopæl uden for EU skal deponere den danske moms af fakturabeløbet hos BRK, indtil eksporten er gennemført på dokumenteret lovligt vis. Foretages eksporten af en af BRK godkendt speditør, skal momsens ikke deponeres. Se listen over godkendte speditører på bruun-rasmussen.dk

11 OVERSKRIDELSE AF BETALINGSFRIST

- 11.1 Overskrides en betalingsfrist, herunder fristen i punkt 8, opkræves morarenter, som beregnes efter Nationalbankens officielle udlånsrente + 8 % om året af det skyldige beløb.
- 11.2 Betales købesummen inkl. renter ikke senest ti dage efter, at der er fremsat påkrav herom, er BRK berettiget til at søge købesummen betalt ved modregning i depositum/ved træk på bankgaranti eller at hæve købet.
- 11.3 Hæves købet, er BRK berettiget til at sælge genstanden på en ny auktion og kræve omkostningerne og en eventuel difference mellem hammerslag (samt salær), der er opnået på de to auktioner, betalt af den misligholdende køber.
- 11.4 Alle forfaldne krav (inkl. omkostninger), som ikke betales rettidigt, kan BRK i tillæg til inkasso søge inddrevet på følgende måder:

A: For købers regning sælge genstande indleveret til auktion af eller på vegne af køber. Salget kan gennemføres uden hensyntagen til en aftalt mindstepris. Genstande indleveret til auktion kan ikke kræves udleveret, så længe forfalden gæld henstår ubetalt.

B: Inddrage købers tilgodehavende hos BRK, herunder tilgodehavende fra salg af genstande indleveret af eller på vegne af køber, uanset om et sådant tilgodehavende stammer fra auktionssalg, som ligger forud for eller efter tidspunktet for købers misligholdelse.

12 AFHENTNING OG UDLEVERING

- 12.1 Ejendomsretten til en købt genstand overgår til køber, når hele købesummen inkl. eventuelle renter og gebyrer er betalt, og først herefter kan udlevering af genstanden finde sted.
- 12.2 Ved udlevering af en købt genstand forbeholder BRK sig retten til at kræve tilfredsstillende dokumentation for, at den person, som ønsker genstanden udleveret, enten selv er køberen eller er bemyndiget af køberen til at få genstanden udleveret.
- 12.3 Udlevering af visse våben kræver forevisning af gyldig våbentilladelse. Sådant krav er angivet med teksten "Køb af dette emne kræver forevisning af gyldig våbentilladelse" i kataloget og på bruun-rasmussen.dk
- 12.4 Købte genstande henligger fra hammerslaget for købers regning og risiko. Afhentning skal ske senest otte hverdage efter sidste auktionsdag.
- 12.5 Foretages afhentningen ikke rettidigt, transporteres de købte genstande til et lager for købers regning og risiko. Transporten koster 150 kr. inkl. moms pr. genstand, og opbevaringen koster 150 kr. inkl. moms pr. genstand pr. påbegyndt uge. Henligger en genstand uafhængt i så lang tid, at lagerlejen overstiger genstandens værdi, er BRK berettiget til for købers regning og risiko og uden hensyn til mindstepris at bortauktionere genstanden eller sælge den underhånden. Køber hæfter fortsat for udgifter til transport og lagerleje, der ikke dækkes ved sådant salg.

13 FORSENDELSE

- 13.1 Er køber forhindret i selv at afhente en genstand, tilbyder BRK for købers regning og risiko at emballere og arrangere forsendelse enten med post eller speditør. Se punkt 12.2 angående legitimation.

14 EKSPORTTILLADELSE

- 14.1 For at sikre at dansk kulturarv af afgørende betydning forbliver i Danmark, kan Kulturværtdiudvalget for visse genstandes vedkommende nedlægge eksportforbud. Hvis køber ønsker at eksportere en genstand ud af Danmark, hvor der er nedlagt et eksportforbud, annulleres købet, og Kulturværtdiudvalget er forpligtet til at overtage genstanden til den pris, der blev opnået på auktionen. Køber kan ikke rejse krav mod BRK som følge af, at et eksportforbud bliver nedlagt.
- 14.2 Visse genstande er omfattet af Washingtonkonventionen, også kendt som CITES, der har til formål at stoppe ulovlig handel med genstande fremstillet af udryddelsestruede vilde dyr og planter. Såfremt en genstand er omfattet af Washingtonkonventionen, CITES, liste 1, vil det fremgå af beskrivelsen på bruun-rasmussen.dk og være markeret med symbolet "☉" i kataloget. Følgende regler gør sig gældende:

- A: Genstande omfattet af Washingtonkonventionen, CITES, liste 1, må kun handles, når der foreligger en dispensation i form af et såkaldt CITES-salgscertifikat. BRK indhenter det fornødne certifikat fra Naturstyrelsen, der tillader handel og eksport til lande inden for EU. Dog kan genstande, som er færdigforarbejdet før 1947, frit handles inden for EU uden et certifikat.
- B: Det er alene genstande omfattet af Washingtonkonventionen, CITES, liste 1, som er særkilt markeret på bruun-rasmussen.dk og i kataloget. Genstande omfattet af Washingtonkonventionen, CITES, liste 2, der frit kan sælges og transporteres inden for EU, er ikke særskilt markeret.
- C: Ved eksport til lande uden for EU skal der uanset årstallet for genstandens færdigforarbejdning altid indhentes en CITES-reeksporttilladelse fra Naturstyrelsen, når genstanden er omfattet af Washingtonkonventionen, CITES, liste 1 og 2. Denne eksporttilladelse kan

normalt indhentes problemfrit, når liste 1-genstande enten er solgt med et CITES-salgscertifikat eller er færdigforarbejdet før 1947. Liste 2-genstande opnår ligeledes normalt problemfrit en reeksporttilladelse.

- D: I forbindelse med eksport til lande uden for EU kan særlige regler gøre sig gældende ifm. den efterfølgende import, og køber opfordres til at indhente oplysninger fra egne myndigheder.

15 MANGLER VED KØBTE GENSTANDE

- 15.1 Købelovens mangelsregler kan finde anvendelse. Nedenfor er angivet et ikke udtømmende uddrag af købers mangelsbeføjelser.
- 15.2 Køber er berettiget til at annullere et køb, hvis beskrivelsen har været behæftet med væsentlige fejl, der har ført til et højere hammerslag, end en korrekt beskrivelse ville have resulteret i. I sådanne tilfælde vil den samlede købesum blive refunderet. Køber kan ikke kræve betaling af renter af købesummen eller kræve dækning af anden udgift eller tab.
- 15.3 Et køb kan ikke annulleres, og køber kan ikke kræve købesummen refunderet eller rejse noget andet krav mod BRK, hvis beskrivelsen af genstanden er i overensstemmelse med punkt 2, eller hvis en påvisning af falskneri havde krævet brug af videnskabelige metoder, der enten ikke var tilgængelige på salgstidspunktet, havde været uforholdsmæssigt omkostningskrævende at anvende eller havde ført til beskadigelse af den pågældende genstand.
- 15.4 Krav om annullering af et køb skal meddeles BRK, når køber er blevet bekendt med det forhold, der berettiger køber til at annullere købet, dog senest to år fra den seneste afhentningsdato efter punkt 12.4. Den købte genstand skal returneres til BRK i samme stand som på hammerslagstidspunktet. Overholdes disse betingelser ikke, mister køber retten til at annullere købet og kan ikke kræve købesummen refunderet. Køber er selv ansvarlig for at betale de omkostninger, der er forbundet med returnering af genstanden.

16 INDSIGELSE- OG ANSVARSBEGRÆNSNING

- 16.1 BRK tager forbehold for fejl, tekniske vanskeligheder samt udefrakommende misbrug eller forstyrrende påvirkning under auktionen. Budgivere kan ikke rejse noget krav mod BRK som følge heraf.
- 16.2 Køber er i alle tilfælde selv ansvarlig for korrekt betaling af moms og andre afgifter, gebyrer mv. i overensstemmelse med danske og udenlandske regler.
- 16.3 Medmindre andet fremgår af disse købsvilkår, kan BRK aldrig blive ansvarlig for budgivers/købers driftstab, avancetab, andre indirekte tab eller følgeskader.

17 PERSONDATAPOLITIK

- 17.1 Det er vigtigt for BRK at sikre fortrolighed og sikkerhed omkring budgivers/købers personlige oplysninger. Persondatapolitikken fremgår af bruun-rasmussen.dk.

18 KLAGE, TVISTLØSNING OG LOVVÆLG

- 18.1 Har budgiver/køber en klage, kan der altid rettes henvendelse til BRK.
- 18.2 Er budgiver/køber forbruger, og kan der ikke findes en løsning, kan der klages til Center for Klageløsning, Nævnens Hus, Toldboden 2, 8800 Viborg, hvis betingelserne herfor er opfyldt. Budgiver/køber kan klage til Center for Klageløsning via forbrug.dk.
- 18.3 Tvister skal indbringes i Danmark ved Københavns Byret, jf. dog punkt 18.2. I forbrugerforhold gælder de ufravigelige værmetingsregler.

Jesper Bruun Rasmussen, auktionsholder

Rev. 06.18

CONDITIONS OF PURCHASE – LIVE AUCTIONS

These conditions of purchase represent Bruun Rasmussen Kunstauktioner A/S' ("BRK") conditions of purchase for live auctions and are effective from 1 January 2017. BRK may modify the conditions of purchase at any time.

By bidding, the bidder/buyer accepts the current conditions of purchase as they appear on bruun-rasmussen.dk. The conditions of purchase are applicable to both business owners and consumers.

BEFORE THE AUCTION

1 VALUATION OF ITEMS

- 1.1 All the offered items are valued by BRK. The valuation is an estimate based on the expected hammer price, see paragraph 5.3. The estimate is based on the previous sale of similar items as well as BRK's past experience. The hammer price can therefore be higher or lower than the estimated price.

2 DESCRIPTION OF ITEMS

- 2.1 Items up for auction are presented with photographs and descriptions in catalogues and on bruun-rasmussen.dk. The description is worded according to the best of BRK's knowledge and based on detailed research in accordance with the prevailing views among experts at the time of sale.
- 2.2 The items up for auction are of an age and nature that often mean that they are in a worn, repaired or damaged condition. As a starting point everything is sold as used items. For this reason, the descriptions in the catalogue or at bruun-rasmussen.dk do not include a statement regarding the above or the condition of the item.
- 2.3 In some cases, BRK may choose to describe an item's provenance. Such a description is made if a former owner is publicly known and/or if the story of previous ownership sheds further light on the item and its background. In other cases, such information is left out of the description, for instance to meet the seller's wish for privacy.
- 2.4 It is possible that the estimate and description are revised prior to the auction. Changes are published on BRK's website.

3 PREVIEW

- 3.1 Items up for auction are presented prior to the auction in one of BRK's showrooms. Potential bidders are encouraged to inspect the items closely and are responsible for determining the condition of the items at these previews, where they also have the opportunity to consult with the valuation experts.
- 3.2 If a potential buyer does not have the opportunity to inspect the item personally, a condition report can be drafted in most cases. The description in this report has been made according to BRK's honest conviction but is not based on scientific studies. A condition report only serves as an identification and is meant as an aid to bidders who do not have the opportunity to inspect the item at the preview.

DURING THE AUCTION

4 THE ROLE OF BRK

- 4.1 The sale of an item is facilitated by BRK on behalf of the seller, and BRK always sells items up for auction at the highest price offered during the bidding round.

- 4.2 Items up for auction can have a reserve price that has been agreed upon with the seller. The price is confidential and the item cannot be sold below this price.
- 4.3 The live auctions are presided over by one of the Danish Ministry of Justice's appointed auctioneers, ensuring that the auctions proceed correctly and lawfully.

5 BIDDING

- 5.1 The currency used while the auctions take place is Danish kroner. The approximate amount in euro/US dollars is shown on screens in the saleroom and also on request.
- 5.2 The auctioneer determines the size of the bid increment and the pace of the auction. Bid increments usually rise by 5% - 10% compared to the previous bid. Approximately 50-100 auction lots are sold per hour.
- 5.3 The hammer price refers both to the gavel used by the auctioneer that signifies the end of a bidding round on an item and to the price (bidding amount) that the item up for auction is sold for. See paragraph 7 regarding amounts added to the hammer price.
- 5.4 The buyer is the bidder that submits the highest bid, thereby obtaining the hammer price. At the moment the hammer price is determined, a binding purchase/sale agreement is entered into based on these conditions of purchase.
- 5.5 If bids are made on behalf of others, the bidder serves as surety for the transaction.
- 5.6 Items are purchased in their present state and condition, and regardless of the type of bidding the buyer has no right to cancel his purchase, neither under the Danish Consumer Contracts Act.
- 5.7 Bidders are required, in accordance with BRK's instructions, to identify themselves and document their ability to pay, for instance by registration of a valid debit/credit card, bank guarantee or a deposit.
- 5.8 BRK may refuse to accept a bid if a sufficient guarantee of the bidder's ability to pay is not provided, or if the bidder has previously defaulted on payment obligations on purchases from BRK.
- 5.9 The overseeing auctioneer will, in consultation with the auctioneer at the podium, decide what to do in matters of dispute concerning a bidding round.

6 TYPES OF BIDDING

- 6.1 Bidding options:

IN PERSON:

Registration and obtaining the bidding paddle take place at the entrance to the saleroom. When the bidder wishes to bid, it is signalled to the auctioneer on the podium by raising the bidding paddle in the air and clearly displaying its number.

COMMISSION BIDS:

The intended maximum bid can be submitted via bruun-rasmussen.dk until the start of the auction or by e-mail, fax or phone, so that the bid is received no later than 24 hours prior to the start of the auction. A commission agent bids on behalf of the bidder within the limits of the stated maximum bid. The commission agent will always bid the lowest possible amount to achieve the hammer price.

TELEPHONE BID:

With certain items it is possible to have a BRK employee call the bidder over the phone. The employee will then bid on behalf of the bidder during the auction. The service can be booked via bruun-rasmussen.dk up until three hours before the auction is set to begin.

LIVE BIDDING:

It is possible to follow the auction live and bid on the auction lots via bruun-rasmussen.dk.

PRE-AUCTION:

Some live auctions are preceded by an online auction. The highest bids from the online auction then represent the starting bids at the following live auction.

AFTER THE AUCTION

7 AMOUNTS ADDED TO THE HAMMER PRICE

- 7.1 In addition to the hammer price, see paragraph 5.3, the buyer pays a buyer's premium for the individual items as well as the other amounts described below if the conditions for these are applicable. The total amount that the buyer pays to BRK is called the "purchase price".
- 7.1.1 Buyer's Premium: The hammer price always includes an additional fee to BRK. At the live auctions, the fee is 24% of the hammer price + VAT of the fee, 30% in total. For stamps and coins, the fee is 20% of the hammer price + VAT of the fee, a total of 25%.
- 7.1.2 "LIVE Bidding": BRK's own "LIVE Bidding" software is free to use for bidders on bruun-rasmussen.dk. If a "LIVE Bidding" software from a third party is used, an additional 3% (including VAT) is added to the buyer's premium. The added fee is transferred to the third party in its entirety.
- 7.1.3 Full VAT: Certain items are sold at auction in accordance with the current rules regarding full VAT. In such a situation, a VAT of 25% is imposed on both the hammer price and the buyer's premium. These items are marked in the catalogue and on bruun-rasmussen.dk with the symbol "*", or with the text: "This item is subject to full VAT".
- 7.1.4 Artist's Resale Right: In accordance with Danish copyright law, a royalty fee covering the Artist's Resale Right has to be charged for works by newer Danish artists, and some foreign artists, who are either alive or have not been dead for more than 70 years. The royalty fee covering the Artist's Resale Right is charged on behalf of VISDA (Visual Rights Denmark). These works are marked "ARR" in the printed catalogue, and on bruun-rasmussen.dk the description of the works includes the text: "This lot is subject to the Artist's Resale Right". The royalty fee covering the Artist's Resale Right is added to the hammer price + the buyer's premium (excluding VAT) if the amount exceeds EUR 300, as indicated below:

Hammer price + buyer's premium (ex. VAT)	Payment Rate
300 - 50,000 euro	5%
50,000 - 200,000 euro	3%
200,000 - 350,000 euro	1%
350,000 - 500,000 euro	0.5%
over 500,000 euro	0.25%

The royalty fee covering the Artist's Resale Right cannot exceed EUR 12,500 (excluding VAT) for each item. The fee must be paid in Danish kroner, and the conversion rate (EUR/DKK) is set by VISDA.

- 7.1.5 Debit/Credit Card Fee: Amounts Added to the Hammer Price: BRK reserves the right to charge the debit/credit card fees imposed by the payment services companies. The rates will appear when bidding on bruun-rasmussen.dk and at payment.

8 PAYMENT DEADLINE

- 8.1 The purchase price falls due after the hammer price has been determined, and then the buyer has eight days to pay BRK the purchase price.

9 PAYMENT METHODS

- 9.1 The payment can be made in the following ways:
A: With debit/credit card (Visa, MasterCard, Maestro, Diners

Club, China UnionPay and JCB) or cash (up to DKK 50,000) in the saleroom or subsequently at one of BRK's locations. Please note that we do not accept EUR 500 banknotes.

- B: With debit/credit card (Dankort, Visa, MasterCard, Diners Club and JCB) via BRK's website on the buyer's personal page.
C: By bank transfer into BRK's account with Danske Bank: 4183 4310970638 · Swift/BIC: DABADKKK · IBAN: DK4130004310970638.

10 VAT EXEMPTION, PAYMENT & DEPOSIT

- 10.1 Some buyers can choose which type of VAT should apply to the transaction. The choice has to be communicated to BRK no later than two working days after the purchase and cannot be changed subsequently.
- A: Businesses in Denmark registered for VAT can decide that the transaction is to be conducted in accordance with the rules for full VAT, see paragraph 7.1.3.
- B: Businesses registered for VAT in another EU Member State can be exempted from paying Danish VAT if it can be proved that the item has been transported to the foreign address that the buyer has registered with BRK and which is written on the invoice. In such cases, the VAT should be settled according to the rules applicable in the country where the buyer is registered for VAT. It is advisable to consult with the local authorities. The buyer can decide not to be exempt from regular VAT and instead pay Danish VAT on second-hand goods/full VAT.
- C: Buyers residing outside the EU can be exempted from Danish VAT if it can be proved that the item has been transported out of the EU. To the extent possible and for a fee, BRK can issue the necessary export documents for the customs authorities. The buyer may decide not to be exempt from regular VAT and instead pay Danish VAT on second-hand goods/full VAT.
- 10.2 Companies registered for VAT in another EU Member State and buyers residing outside the EU must deposit the Danish VAT on the amount invoiced with BRK until the export process has been completed in a documented, lawful fashion. If the export is undertaken by one of BRK's authorized forwarding agents, the VAT does not have to be deposited. See the list of authorized forwarding agents on bruun-rasmussen.dk.

11 OVERDUE PAYMENTS

- 11.1 If payment is made after a deadline, including the deadline specified in paragraph 8, interest on overdue payments will be charged and estimated in accordance with the Danish Central Bank's official lending rate + 8% per year on the amount due.
- 11.2 If the purchase price, including interest, has still not been paid ten days after the demand for payment has been made, BRK is entitled to seek the purchase price paid by making a set-off against the deposit/by drawing on the bank guarantee or to cancel the purchase.
- 11.3 If the purchase is cancelled, BRK is entitled to sell the item at a new auction and demand the costs and any difference between the new and the earlier hammer price (including the buyer's premium) covered by the defaulting buyer.
- 11.4 In addition to debt collection, BRK may seek recovery of all due claims (including costs) not paid in a timely manner in the following ways:
A: Making the buyer cover the costs of selling items consigned to auction by or on behalf of the buyer. The sale can be conducted without regard to an agreed reserve price. Items consigned for auction cannot be collected as long as overdue debts are unpaid.
B: Seizing the buyer's remaining balance with BRK, including the balance from the sale of items consigned by or on behalf of the buyer, regardless of whether such receivables derive from auction sales prior to or after the date of the buyer's default on the payment.

12 PICK-UP & COLLECTION

- 12.1 The title to a purchased item passes to the buyer when the full purchase price, including any interest and fees, has been paid, and only then can the collection of an item take place.
- 12.2 In connection with the collection of a purchased item, BRK reserves the right to demand satisfactory documentation that the person who wants to pick up the item is either the buyer himself/herself or authorized by the buyer to receive the item on his/her behalf.
- 12.3 The collection of certain weapons requires presentation of a valid weapons certificate. Items with such requirements are listed with the text: "The purchase of this item requires the presentation of a valid weapons certificate" in the catalogue and on bruun-rasmussen.dk.
- 12.4 Purchased items are stored after the auction at the buyer's expense and risk. Pick-up must take place no later than eight working days after the last auction day.
- 12.5 If the item(s) is/are not picked up on time, the purchased items will be transported to a warehouse at the buyer's risk and expense. The transport costs are DKK 150 including VAT per item and the storage costs are DKK 150 including VAT per item for each week or part of a week. If an item is left unclaimed for an amount of time that results in the storage costs exceeding the value of the item, BRK will be entitled to, at the buyer's expense and risk and without regard to the reserve price, sell the item at an auction or privately. The buyer is still liable for the costs of transportation and storage not covered by such sale.

13 SHIPPING

- 13.1 If the buyer is unable to pick up the purchased item, BRK offers to pack and arrange delivery either by mail or by freight forwarder at the buyer's risk and expense. See paragraph 12.2 regarding identification.

14 EXPORT LICENSE

- 14.1 To ensure that Danish cultural heritage of vital importance remains in Denmark, the Danish Cultural Assets Commission can place an export ban on certain items. If the buyer wishes to export an item that is subject to an export ban in Denmark, the purchase will be cancelled and the Danish Cultural Assets Commission is obliged to acquire ownership of the item for the price obtained at auction. The buyer cannot raise any claims against BRK as a result of an export ban.
- 14.2 Certain items are included in the Washington Convention, also known as CITES. The purpose of CITES is to stop the trade of items made with endangered species and flora. If the item is included in the Washington Convention, CITES, Appendix 1, this will appear in the description of the item on bruun-rasmussen.dk and be marked with the symbol "🌿" in the catalogue. The following rules are applicable:
 - A: Items that are included in the Washington Convention, CITES, Appendix 1, can only be traded when a dispensation in the form of a CITES certificate has been obtained. BRK obtains the required certificate from the Danish Nature Agency that allows trade and export to countries within the EU. Items that were produced before 1947 can, however, be freely traded within the EU without a certificate.
 - B: It is only items included in the Washington Convention, CITES, Appendix 1 that are marked individually on bruun-rasmussen.dk and in our catalogue. Items included in the Washington Convention, CITES, Appendix 2, which can be freely sold and transported within the EU, are not individually marked.
 - C: Export to countries outside the EU must, regardless of the year of the item's production, always procure a CITES re-export permit from the Danish Nature Agency if the item is included in the Washington Convention, Appendix 1 and 2. This export permit can usually be obtained without problems, if the item is either sold with a CITES certificate or was made prior to 1947. Appendix 2 items usually also receive a re-export permit without problems.

D: In connection with export to other countries outside the EU, special rules may apply concerning the subsequent import, and the buyer is encouraged to consult the relevant local authorities about this issue.

15 DEFECTS IN THE PURCHASED ITEMS

- 15.1 The lack of conformity rules of the Danish Sale of Goods Act may apply. Below is a non-exhaustive excerpt of the buyer's remedies in regard to lack of conformity.
- 15.2 The buyer is entitled to cancel a purchase if the description contained significant errors that have led to a higher hammer price than a correct description would have resulted in. In such cases, the total purchase price will be refunded. The buyer cannot demand payment of interest on the purchase price or demand payment of any other expenses or losses.
- 15.3 A purchase cannot be cancelled and the buyer cannot demand a refund of the purchase price or raise any other claims against BRK if the description of the item is in compliance with paragraph 15.2. The same applies if evidence of forgery has required the use of scientific methods that were either not available at the time of sale, were excessively costly to use or led to the damage of the item in question.
- 15.4 Claims for a cancellation of a purchase must be notified to BRK when the buyer has discovered the fact that entitles the buyer to cancel the purchase. This notice, however, has to be given no later than two years after the final pick-up date according to paragraph 12.4. The item purchased must be returned to BRK in the same condition as it was on the day it was sold at auction. If these conditions are not met, the buyer loses the right to cancel the purchase and cannot claim a refund of the purchase price. The buyer is responsible for paying the costs associated with the return of the item.

16 OBJECTIONS & LIMITATIONS OF LIABILITY

- 16.1 BRK is aware that errors, technical difficulties and external abuse or disruptive influences may occur during the auction. Bidders cannot raise any claims against BRK as a result of such events.
- 16.2 The buyer is always responsible for the correct payment of VAT and other costs, fees etc. in accordance with Danish and foreign regulations.
- 16.3 Unless otherwise stated in these conditions of purchase, BRK may never be held liable for bidders'/buyers' operating loss, loss of profits, other indirect losses or consequential loss.

17 PRIVACY POLICY

- 17.1 It is important to BRK to ensure confidentiality and security regarding the bidder's/buyer's personal information. The privacy policy can be found on bruun-rasmussen.dk.

18 COMPLAINTS, DISPUTE RESOLUTION AND APPLICABLE LAW

- 18.1 BRK can always be contacted if the bidder/buyer has a complaint.
- 18.2 If the bidder/buyer is a consumer and a solution cannot be found, a complaint can be submitted to the Complaint Resolution Centre, Nævnenes Hus, Toldboden 2, 8800 Viborg, Denmark, if the conditions for such a complaint are met. The bidder/buyer can complain to the Complaint Resolution Centre on forbrug.dk.
- 18.3 In Denmark, disputes must be brought before the City Court of Copenhagen, but see paragraphs 18.2. The mandatory rules on jurisdiction apply to consumer interests.

Jesper Bruun Rasmussen, Auctioneer

The above is an English translation of the Danish version of the Conditions of Purchase. In case of a dispute, only the Danish version of the present Conditions of Purchase of Bruun Rasmussen is valid.

Rev. 10.19

ADDRESSES

BRUUN RASMUSSEN AUCTIONEERS

COPENHAGEN – BREDGADE

BREDGADE 33
DK-1260 COPENHAGEN K
Tel +45 8818 1111
E-mail: info@bruun-rasmussen.dk

COPENHAGEN – SUNDKROGSGADE

SUNDKROGSGADE 30
DK-2150 NORDHAVN
Tel +45 8818 1111
E-mail: info@bruun-rasmussen.dk

COPENHAGEN – BALTIKAVEJ

BALTIKAVEJ 10
DK-2150 NORDHAVN
Tel +45 8818 1111
E-mail: info@bruun-rasmussen.dk

AARHUS

SØREN FRICHS VEJ 34 D
DK-8230 ÅBYHØJ
Tel +45 8818 1100
E-mail: aarhus@bruun-rasmussen.dk

FYN

NICK MESSMANN
Tel +45 8818 1232
E-mail: nic@bruun-rasmussen.dk

ONLINE AUCTIONS – SUPPORT

BRUUN-RASMUSSEN.DK
Tel +45 8818 1114
E-mail: support@bruun-rasmussen.dk

REPRESENTATIVES:

FRANCE & BELGIUM

DITTE HERBERG KROGH · PARIS
Tel +33 6 6185 4564
E-mail: dhk@bruun-rasmussen.dk

SOUTHERN FRANCE & LUXEMBOURG

PETER KOCH
Tel +45 4045 3403
E-mail: p.koch@bruun-rasmussen.dk

GERMANY

NICK MESSMANN
Tel +45 8818 1232
E-mail: nic@bruun-rasmussen.dk

SPAIN

VAGN ERIK KROGSØE
Tel +45 2445 1224
E-mail: vek@bruun-rasmussen.dk

SWEDEN

ANNA SIEVERT
Tel +46 72-253 98 16
E-mail: asi@bruun-rasmussen.dk

THAILAND

ANDERS NORMANN
Tel +66 818 177 273
E-mail: normann@bruun-rasmussen.dk

UNITED KINGDOM

ANNA GRUNDBERG · LONDON
Tel +44 7976 554 439
E-mail: agr@bruun-rasmussen.dk

USA

SANDRA SEPTIMIUS · NEW YORK
Tel +1 718 764 7601
E-mail: ss@bruun-rasmussen.dk
BENEDICTE HALLOWELL
Tel and Fax +1 617 566 7333
E-mail: b.hallowell@bruun-rasmussen.dk

CONTACT DIRECTLY

KONTAKT DIREKTE

HOVEDNUMMER / MAIN NUMBER

Bruun Rasmussen Auctioneers +45 8818 1111

ADMINISTRATION

Jakob Dupont, CEO +45 8818 1081
dupont@bruun-rasmussen.dk

KUNDESERVICE / CUSTOMER SERVICE

kundeservice@bruun-rasmussen.dk +45 8818 1010
customerservice@bruun-rasmussen.dk +45 8818 1010

KOMMISSIONER / COMMISSIONS

Lise Winther Wobido +45 8818 1013
Anja Bering Hansen +45 8818 1028
bids@bruun-rasmussen.dk

BESTILLING AF KATALOGER / CATALOGUE REQUESTS

Kundeservice / Customer service +45 8818 1111

AUKTIONS RÅDGIVNING / AUCTION GUIDANCE

Franziska Kampmann +45 8818 1026
fka@bruun-rasmussen.dk

SHIPPING

shipping@bruun-rasmussen.dk +45 8818 1055

VURDERING OG INFORMATION / VALUATION AND INFORMATION

INDBOVURDERINGER / VALUATION AT YOUR HOME

David Utzon-Frank +45 8818 1221
duf@bruun-rasmussen.dk

Kasper Nielsen +45 8818 1121
kn@bruun-rasmussen.dk

Hans Ruben +45 8818 1231
hru@bruun-rasmussen.dk

Ralph Lexner +45 8818 1161
rl@bruun-rasmussen.dk

Liselotte Toxværd Møller +45 8818 1234
ltm@bruun-rasmussen.dk

ARMBÅNDSURE / WRISTWATCHES

Henrik Jørgensen +45 8818 1168
hj@bruun-rasmussen.dk

BØGER / BOOKS

Lærke Bøgh +45 8818 1217
lb@bruun-rasmussen.dk

FRIMÆRKER / STAMPS

Christian Grundtvig +45 8818 1214
cg@bruun-rasmussen.dk

MØNTER / COINS

Michael Fornitz +45 8818 1201
mfo@bruun-rasmussen.dk

MODERNE DESIGN / MODERN DESIGN

Peter Kjølgaard Jensen +45 8818 1191
pkj@bruun-rasmussen.dk

Ole Ravn +45 8818 1192
olr@bruun-rasmussen.dk

MODERNE KUNST / MODERN ART

Niels Raben +45 8818 1181
nr@bruun-rasmussen.dk

Niels Boe Hauggaard +45 8818 1182
nbh@bruun-rasmussen.dk

MODERNE SØLV / MODERN SILVER

Amalie Hansen +45 8818 1194
amh@bruun-rasmussen.dk

PORCELÆN, GLAS OG ASIATISK KUNST / CERAMICS, GLASS AND ASIAN ART

Ralph Lexner +45 8818 1161
rl@bruun-rasmussen.dk

Charlotte Hviid +45 8818 1162
chv@bruun-rasmussen.dk

RUSSISK KUNST / RUSSIAN ART

Martin Hans Borg +45 8818 1128
mhb@bruun-rasmussen.dk

SMYKKER / JEWELLERY

Katrin Mikkelsen Sørensen +45 8818 1174
kms@bruun-rasmussen.dk

TÆPPER / CARPETS

Henrik Schleppegrell +45 8818 1145
hsc@bruun-rasmussen.dk

VIN / WINE

Morten Stenør Larsen +45 8818 1207
msl@bruun-rasmussen.dk

VÅBEN / WEAPONS

David Utzon-Frank +45 8818 1221
duf@bruun-rasmussen.dk

ÆLDRE KUNST / FINE ART

Julie Arendse Voss +45 8818 1123
jav@bruun-rasmussen.dk

Birte Stokholm +45 8818 1122
bst@bruun-rasmussen.dk

ÆLDRE MØBLER / FURNITURE

Anders Fredsted +45 8818 1142
afr@bruun-rasmussen.dk

Henrik Schleppegrell +45 8818 1145
hsc@bruun-rasmussen.dk

ÆLDRE SØLV / SILVER

Heidi Schopphuus Jensen +45 8818 1163
hsj@bruun-rasmussen.dk

COMMISSION BIDS

KOMMISSIONSBUD

It is possible to leave commission bids if you can not be present at the auction yourself. This service is free of charge.

When leaving a commission bid, you are instructing our customer service to bid up to a specified amount on your behalf.

The situation can occur that another buyer has already bid the same as you were prepared to. Are you then willing to bid further? If not the lot will be sold to another buyer.

If you do not wish to exceed your bid then write "Max", for maximum, next to the amount. You can also allow us to raise your bid by approx. 15% or approx. 25%.

The hammer price may be higher or lower than the estimated price, so it is possible to buy below the estimate. Bruun Rasmussen will always buy at the lowest price possible, as if you yourself had been present at the auction.

All commission bids are strictly confidential.

Commission bids must be submitted no later than **24 hours** prior to the start of the auction.

HOW TO MAKE A COMMISSION BID:

Complete the commission form with all pertinent information.

Indicate the lot number.

Indicate the amount you are prepared to bid.

Should this amount be the absolute maximum, please write "Max" in the appropriate column.

You can also allow us to bid by up to approx. 15% or approx. 25% more by indicating so.

Sign the commission form and make sure that Bruun Rasmussen receives it **24 hours** prior to the start of the auction.

If the information should be insufficient, Bruun Rasmussen can abstain from bidding. Bruun Rasmussen can not be held responsible for error in bidding or failure to execute bids.

INTERNET:

Commission bids can be submitted via website bruun-rasmussen.dk directly from the page with the item you want to submit a bid for.

Deadline for submissions of bids via the website is **3 hours** prior to the start of the auction.

Submitted bids are shown under "Your bids" when you are logged in. Please contact technical support on +45 8818 1114 for questions about the registration and submission of bids on the website.

For additional information, please consult "Conditions of Purchase" §1.

TELEPHONE BIDDING:

Should you wish to bid at auction by telephone, please inform Bruun Rasmussen of your name and telephone number, as well as which catalogue numbers you are interested in, no later than **3 hours** prior to the start of the auction. You will then be contacted shortly before the relevant lot comes under the hammer, thereby allowing you to participate without being in the auction room yourself.

For additional information, please consult "Conditions of Purchase" §1.

Det er muligt at afgive kommissionsbud, hvis De ikke selv kan være til stede på auktionens dag. Denne service er gratis.

Når De afgiver en kommission, beder De vores kundeservice på Deres vegne byde op til et af Dem bestemt beløb i hammerslag.

Der kan opstå den situation, at en anden køber allerede har budt det beløb, som De ønsker at afgive. Er De da villig til at gå et bud højere eller er De indforstået med at nummeret sælges til anden side?

Ønsker De ikke at byde højere så skriv "Max" ud for beløbet. Er De i tvivl om hvor højt De vil byde, kan De hæve budet med op til ca. 15% eller ca. 25%.

Salgsprisen kan blive højere eller lavere end vurderingen, så der er også mulighed for at købe til under den angivne vurdering. Vor kundeservice køber altid så billigt som muligt til Dem, som havde De selv været tilstede på auktionen.

Alle kommissioner behandles strengt fortroligt.

Kommissionsbud skal være Bruun Rasmussen i hænde senest **24 timer** før auktionens start.

SÅDAN BYDER DE:

Udfyld blanketten kommissionsbud med alle oplysninger.

Angiv katalognummer.

Angiv beløbet De ønsker at byde.

Er dette Deres absolutte maximum bedes De anføre "Max" i kolonnen.

De kan også forhøje Deres bud med henholdsvis ca. 15% eller ca. 25%, ved at indikere dette i kolonnen.

De bedes underskrive kommissionsblanketten og sikre Dem, at Bruun Rasmussen modtager den senest **24 timer** før auktionens start.

Hvis Deres oplysninger ikke er tilstrækkelige, kan Bruun Rasmussen undlade at byde for Dem, ligesom Bruun Rasmussen ikke kan gøres ansvarlig for fejl ved budgivning.

INTERNET:

Kommissionsbud kan afgives på hjemmesiden bruun-rasmussen.dk direkte fra siden med den effekt, De ønsker at byde på.

Seneste afgivelse af bud via hjemmesiden er **3 timer** før auktionens start.

Afgivne bud kan ses på hjemmesiden under "Deres bud", når de er logget ind. Kontakt teknisk support på 8818 1114 for spørgsmål om registrering og budgivning via internettet.

For yderligere information, se "Købskonditioner", §1.

TELEFONBUD:

Såfremt De ønsker at byde pr. telefon, bedes De oplyse Bruun Rasmussen Deres navn og telefonnummer samt hvilke katalognumre, De ønsker at byde på, senest **3 timer** før auktionens start. De vil så blive ringet op kort før, den aktuelle vare kommer under hammeren, og De kan på denne måde deltage i auktionen uden selv at være til stede.

For yderligere information, se "Købskonditioner" på bruun-rasmussen.dk under "Guide".

COMMISSION BIDS

KOMMISSIONSBUD

BREDGADE

Skal være Bruun Rasmussen i hænde senest **24 timer** før auktionens start.
Must be submitted no later than 24 hours prior to the start of the auction.

AUKTION NR AUCTION NO: **891**

Navn Name: *

Adresse Address: *

Postnr./by City: *

Land Country: * Fax:

Tel: *

e-mail: CVR-nr. VAT No.:

Bank: Konto nr. Acct. No.:

Adresse Address:

Postnr./By City: Land Country:

Tel: Kontaktperson Contact:

Obligatoriske felter er mærket med en stjerne * *Mandatory fields are marked with an asterix **

Undertegnede giver hermed fuldmagt til Bruun Rasmussen Kunstauktioner A/S om på mine vegne at købe nedennævnte katalognumre så fordelagtigt som muligt, inden for det af mig anførte beløb, i hammerslag.
I hereby request that Bruun Rasmussen bid on my behalf on the following lots up at the prices indicated below.

Undertegnede har udfyldt ovennævnte med de ønskede oplysninger, samt har accepteret købskonditionerne.
The undersigned has supplied the required information and agrees to be bound by the conditions of purchase.

Signatur: * B.R. kunde-nr. Client No.:

Jeg ønsker at modtage salgsresultater på de emner jeg har budt på via email dagligt efter auktion
I wish to receive sales results on the items I have been bidding on via e-mail every day after the auction

på e-mail adressen *on this e-mail address:*

Katalog nr. Lot. No.	Beskrivelse Description	Bud kr. Bid DKK	Max	+15%	+25%

BRUUN RASMUSSEN KUNSTAUKTIONER A/S

Bredgade 33 · DK-1260 København K · Tel +45 8818 1111 · Fax +45 8818 1112 · bids@bruun-rasmussen.dk · bruun-rasmussen.dk

Fortsættes næste side *Please turn over*



COMMISSION BIDS

KOMMISSIONSBUD

BREDGADE

Katalog nr. Lot. No.	Beskrivelse Description	Bud kr. Bid DKK	Max	+15%	+25%

Ret til ændringer forbeholdes © 2019 Bruun Rasmussen Kunstauktioner
Foto: Bent Lange, Henrik Wichmann & Peter Madsen- Tryk: Cool Gray
Grafik og dtp: Jorge Figueiredo & Bettina Stefansen

AUKTION NR AUCTION NO: **891**

Bruun Rasmussen **LIVE**

– bid wherever you are!

Experience the atmosphere of the auction room

If you are unable to attend the traditional auctions in person, you can follow an auction in progress and experience the atmosphere in the auction room via live streaming – just as if you were there.

Bid via Bruun Rasmussen Live

When the auction begins, you will be able to see the link “Live: Watch auction” at bruun-rasmussen.dk, from where you can follow the auctioneer during the auction.

If you wish to submit a bid, simply log in first.

What to do:

- Click on the “Live: Watch auction” link
- Log in
- Submit your bid

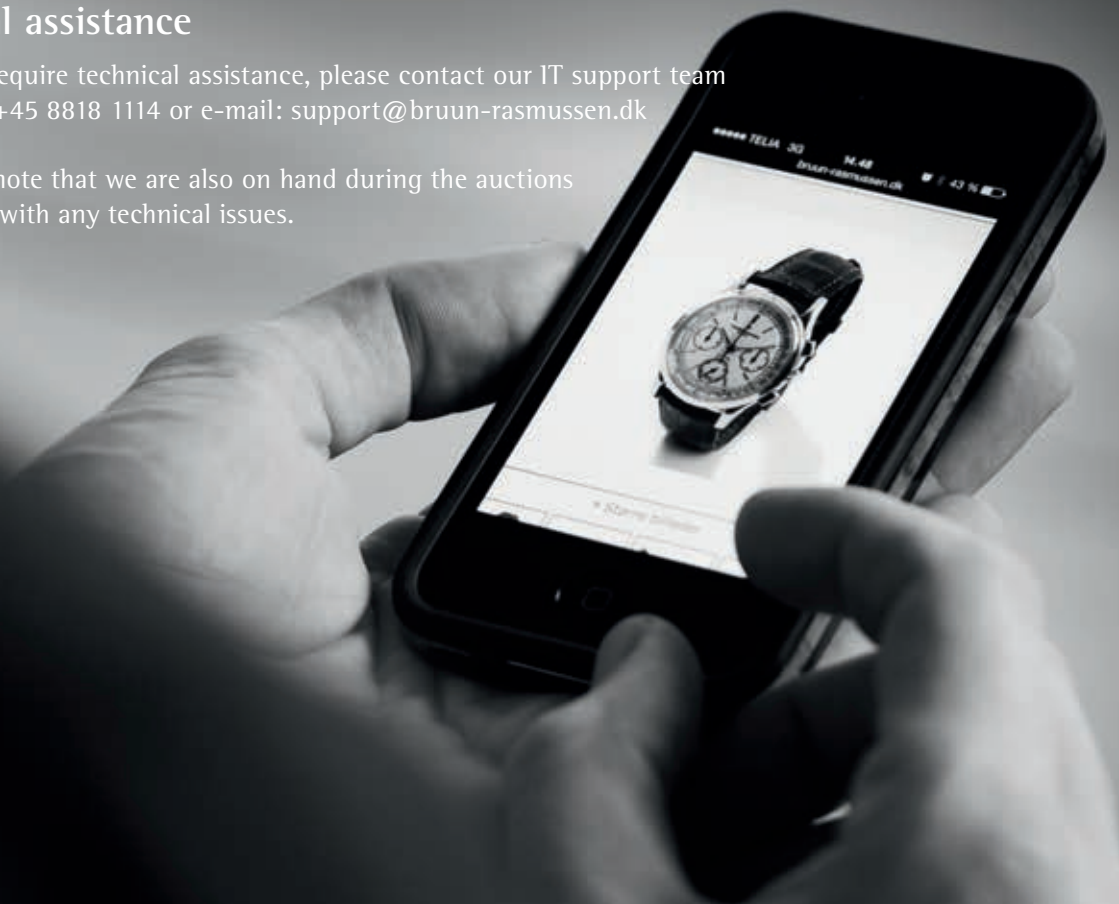
The bidding process

Your bid will be treated in the same way as the bids submitted by those present in the room. If your bid is successful, you will be required to pay the standard costs which apply to all purchases from Bruun Rasmussen according to the conditions of purchase. Bruun Rasmussen accepts no liability for bids lost as a result of technical problems.

Technical assistance

If you require technical assistance, please contact our IT support team on tel. +45 8818 1114 or e-mail: support@bruun-rasmussen.dk

Please note that we are also on hand during the auctions to deal with any technical issues.



R ANTIQUES