

NORDIC DESIGN

International auction 870



BRUUN RASMUSSEN

AUCTIONEERS OF FINE ART

NORDIC DESIGN

International auction 870



AUCTION

8 - 9 March 2017

PREVIEW

Thursday	23 February	3 pm - 6 pm
Friday	24 February	11 am - 5 pm
Saturday	25 February	11 am - 4 pm
Sunday	26 February	11 am - 4 pm
Monday	27 February	11 am - 5 pm

or by appointment



BRUUN RASMUSSEN

AUCTIONEERS OF FINE ART

Bredgade 33 · DK-1260 Copenhagen K · Tel +45 8818 1111
info@bruun-rasmussen.dk · bruun-rasmussen.com



Lot 907

DAYS OF SALE

FINE ART + ANTIQUES

Tuesday 28 February
4 pm Paintings and drawings 1 - 127

FINE ART + ANTIQUES

Wednesday 1 March
2 pm Silver and ceramics 128 - 183
Furniture, clocks and bronzes 184 - 310
Oriental carpets 311 - 383

Thursday 2 March
4 pm Jewellery 384 - 565
6:30 pm Wristwatches 566 - 605

MODERN ART

Tuesday 7 March
4 pm Paintings and sculptures 606 - 760

Wednesday 8 March
2 pm Paintings and sculptures 761 - 824
Prints 825 - 872

NORDIC DESIGN

Wednesday 8 March
3:30 pm Silver 873 - 921
Ceramics 922 - 945

Thursday 9 March
4 pm Furniture, lamps and carpets 946 - 1116

DEADLINE FOR CLAIMING ITEMS: WEDNESDAY 22 MARCH

Items bought at Auction 870 must be paid no later than eight days from the date of the invoice and claimed on Bredgade 33 by Wednesday 22 March at the latest. Otherwise, they will be moved to Bruun Rasmussen's storage facility at Baltikavej 10 in Copenhagen at the buyer's expense and risk. This transportation will cost DKK 150 per item VAT included, and storage will cost DKK 150 per item per week VAT included.



NORDISK DESIGN

International auktion 870



AUKTION

8. - 9. marts 2017

EFTERSYN

Torsdag	23. februar	kl. 15 - 18
Fredag	24. februar	kl. 11 - 17
Lørdag	25. februar	kl. 11 - 16
Søndag	26. februar	kl. 11 - 16
Mandag	27. februar	kl. 11 - 17

eller efter aftale



BRUUN RASMUSSEN

KUNSTAUKTIONER

Bredgade 33 · 1260 København K · Tel +45 8818 1111
info@bruun-rasmussen.dk · bruun-rasmussen.dk



AUKTIONSKALENDER

FINE ART + ANTIQUES

Tirsdag	28. februar		
	kl. 16	Malerier og tegninger	1 - 127

FINE ART + ANTIQUES

Onsdag	1. marts		
	kl. 14	Sølv og keramik	128 - 183
		Møbler, ure og bronzer	184 - 310
		Orientaliske tæpper	311 - 383
Torsdag	2. marts		
	kl. 16	Smykker	384 - 565
	kl. 18.30	Armbåndsure	566 - 605

MODERN ART

Tirsdag	7. marts		
	kl. 16	Malerier og skulpturer	606 - 760
Onsdag	8. marts		
	kl. 14	Malerier og skulpturer	761 - 824
		Grafik	825 - 872

NORDIC DESIGN

Onsdag	8. marts		
	kl. 15.30	Sølv	873 - 921
		Keramik	922 - 945
Torsdag	9. marts		
	kl. 16	Møbler, belysning og tæpper	946 - 1116

SIDSTE FRIST FOR AFHENTNING: ONSDAG DEN 22. MARTS

Effekter købt på auktion 870 skal være betalt senest 8 dage efter fakturadatoen og afhentet i Bredgade 33 senest onsdag den 22. marts. I modsat fald bliver de transporteret til Bruun Rasmussens lager på Baltikavej 10 i Københavns Nordhavn for købers regning og risiko. Transporten koster 150 kr. pr. effekt inkl. moms, og opbevaringen koster 150 kr. pr. effekt pr. påbegyndt uge inkl. moms.



Lot 1022

Opening Presentation & "Gallery Talks"

Preview, Bredgade 33

Thursday, 23 February

Opening Presentation

2:30 pm "Known and Unknown in the Danish Golden Age" by newly appointed museum director for the Hirschsprung Collection, Gertrud Oelsner (saleroom). The preview opens at 3 pm.

Friday, 24 February

"Gallery Talks"

2 pm "Introduction to the German Artist Günther Förg" by specialist in modern art, Niels Boe Hauggaard (1st floor, room 1.15)

3 pm "Regarding Ring: The Life & Art of the Danish Painter L.A. Ring" by specialists in fine art, Birte Stokholm and Julie Arendse Voss (1st floor)

Monday, 27 February

"Gallery Talks"

2 pm "Flora Danica Porcelain" by specialist in antique decorative art, Charlotte Hviid (1st floor, room 1.8)

3 pm "Poul Henningsen: The Early Lamps" by specialist in modern design, Ole Ravn (1st floor, room 1.15)

All the lectures will be in Danish

Åbningsforedrag & "Gallery Talks"

Eftersynet, Bredgade 33

Torsdag 23. februar

Åbningsforedrag

Kl. 14.30 "Kendt og ukendt i guldalderen" ved nyligt tiltrådt museumsdirektør Gertrud Oelsner, Den Hirschsprungske Samling (auktionssalen). Eftersynet åbner kl. 15.

Fredag 24. februar

"Gallery Talks"

Kl. 14 "Introduktion til den tyske kunstner Günther Förg" ved ekspert i moderne kunst, Niels Boe Hauggaard (1. sal, rum 1.15)

Kl. 15 "Rundt om Ring – kunstneren L.A. Rings liv og værk" ved eksperter i ældre kunst, Birte Stokholm og Julie Arendse Voss (1. sal)

Mandag 27. februar

"Gallery Talks"

Kl. 14 "Porcelænet Flora Danica" ved ekspert i ældre kunsthåndværk, Charlotte Hviid (1. sal, rum 1.8)

Kl. 15 "Poul Henningsen – de tidlige lamper" ved ekspert i design, Ole Ravn (1. sal, rum 1.15)



Kjærholm's Unique Table, PH's First Floor Lamp and Norell's Thumb

Nordic heavyweights such as architects Poul Kjærholm, Poul Henningsen, PH, and Arne Norell will be setting the agenda at the year's first design auction in Bredgade. Kjærholm stands apart from what one normally associates with "Danish Modern". In contrast to the general focus on wood as a material and organic forms, steel was his preferred material to create his well-known minimalistic and almost floating furniture. He was inspired by International Modernism and the Bauhaus tradition, and with his futuristic designs his work still resonates internationally. His furniture pieces are regular guests at our auctions, and this time we can present a unique dining table made of chrome steel and oak, which is designed as a combination of "PK 40" and "PK conference table" in the late 1970s. The table has belonged to furniture manufacturer E. Kold Christensen and has until now been in the family's possession. Kold Christensen combined the two types of furniture into this beautiful piece, which is a testament to his fine eye for design as well as the close relationship between the architect and the manufacturer. Kold Christensen lived in "The House on Piniehøj" in Rungsted just steps from Kjærholm's home, and the two were both close friends and collaborators until Kjærholm's death in 1980 (cat. no. 1108).

Another close relationship was established between the architect Finn Juhl and the CoBrA artist Egill Jacobsen. In 1945, Juhl designed the classic "FJ 45" and had it produced with his regular partner, Niels Vodder. With its soft lines and sculptural appearance the chair stands in stark contrast to the designs of Kjærholm, and it sits at the same level as "The Chieftain Chair" among Juhl's most famous furniture. It is not unusual to see this furniture piece on the auction market, but the uniqueness of this particular example is not only that it is made in rosewood and its original blue upholstery; it is also its rare good condition. The chair's previous owner Egill Jacobsen most likely considered the chair beautiful, but evidently he did not use it very much (cat. no. 1024).

We cannot have a design auction without the Danish designer Poul Henningsen, PH, who stands as a beacon within Danish cultural heritage. Both as a social critic, revue writer, architect and lamp maker he has left his mark on the collective Danish consciousness. PH already laid the seeds for the construction of his anti-glare PH lamp during the early 1920s. The lamp design led to international fame for PH and resulted in the development of numerous lamp designs based on the same principle of lighting. One of the first lamps based on PH's ideas achieved a gold medal at the World's Fair in Paris in 1925. A few years later he transferred the principles to his first floor lamp, which was produced by Louis Poulsen and has now found its way to our auction. The lamp was bought in the late 1920s by the present owner's grandfather, who worked for the Danish electrical components company Lauritz Knudsen on Østerbro in Copenhagen and has since then been in the same family. The red copper screens provide the finest soft light, and today this particular lamp is considered an icon among international collectors (cat. no. 985).

Arne Norell holds a strong position among the Swedish architects. He was inspired by the Danish design idiom, and at this auction you can find two examples of his quirky armchair "Tummen" (The Thumb) from 1952, where one armrest is reminiscent of precisely a thumb. After World War II many of the Nordic architects looked to the art world in their designs, such as the contemporary sculpture's soft and organic forms. The asymmetrical form of Norell's chair reflects this inspiration, and the design caused quite a stir when it was first introduced at the Swedish Exhibition "Önskehem" in Marmorhallarna in Stockholm in 1952 (cat. no. 1038).



Jesper Bruun Rasmussen



Kjærholms unikabord, PH's første standerlampe og Norells tommel

Det er nordiske sværvægttere som arkitekterne Poul Kjærholm, Poul Henningsen alias PH og Arne Norell, der sætter dagsordenen på årets første designauktion i Bredgade. Kjærholm skiller sig om nogen ud fra det, man normalt forbinder med Danish Modern. Som kontrast til det almene fokus på træ og organiske former, skabte han med stålet som foretrukket materiale sine velkendte minimalistiske og nærmest svævende møbler. Han vendte sig i retning af den internationale modernisme og Bauhaus-traditionen, og med sit futuristiske formsprog vinder han stadig genklang verden over. Hans møbler er faste gæster på vores auktioner, og denne gang præsenterer vi et unika spisebord af forkromet stål og egetræ, der er udført som en kombination af "PK 40" og "PK-konferencebord" i slutningen af 1970'erne. Bordet har tilhørt møbelproducenten E. Kold Christensen og har indtil nu været i denne families eje. Kold Christensen forenede de to møbeltyper til dette smukke eksemplar, der både vidner om hans gode øje for design samt den tætte relation mellem arkitekten og producenten. Kold Christensen boede i "Huset på Piniehøj" i Rungsted kun få skridt fra Kjærholms hjem, og de to var både nære venner og samarbejdspartnere frem til Kjærholms død i 1980 (kat.nr. 1108).

Et andet nært forhold havde arkitekten Finn Juhl og CoBrA-kunstneren Egill Jacobsen. I 1945 formgav Juhl klassikeren "FJ 45" og lod den producere hos sin faste samarbejdspartner, snedkermester Niels Vodder. Med sine bløde linjer og skulpturelle præg står den i stærk kontrast til Kjærholm, og på niveau med "Høvdingestolen" hører den til blandt Juhls mest kendte møbler. Det er ikke usædvanligt at se den på auktionsmarkedet, men det særlige ved det udbudte eksemplar er ikke alene materialet riopalisander og det originale blå betræk, men også dens sjældent gode stand. Stolens tidligere ejer Egill Jacobsen har nok fundet stolen smuk, men øjensynligt ikke siddet så meget i den (kat.nr. 1024).

Ingen auktion uden PH, der står som et fyrtårn i dansk kulturarv. Både som samfundsrevser, revyforfatter, arkitekt og lysmager har han sat sig markante spor i danskernes bevidsthed. Allerede i begyndelsen af 1920'erne dannede PH kimen til konstruktionen af den blændfrie PH-lampe, der blev startskuddet til hans internationale berømmelse og førte til udviklingen af utallige lamper konstrueret over samme lysprincip. En af de første eksemplarer opnåede en guldmedalje på Verdensudstillingen i Paris i 1925. Få år senere overførte han principperne til sin første standerlampe, der blev produceret hos Louis Poulsen og nu har fundet vej til vores auktion. Lampen blev i slutningen af 1920'erne købt af nuværende ejers bedstefar, der arbejdede for elmateriel-virksomheden Lauritz Knudsen på Østerbro i København, og siden har den været i samme families eje. De røde kobberskærme giver det fineste bløde lys, og i dag betragtes netop denne lampe som et ikon hos internationale samlere (kat.nr. 985).

Blandt de svenske arkitekter står Arne Norell stærkt. Han var inspireret af det danske møbelformsprog, og på denne auktion finder man to eksemplarer af hans finurlige lænestol "Tummen" fra 1952, hvis ene armlæn netop leder tankerne hen på en tommelfinger. Efter anden verdenskrig skævede mange af de nordiske arkitekter til kunstverdenen i deres formgivning, fx de samtidige skulpturers bløde og organiske former. Stolens asymmetriske form reflekterer denne inspiration, og den vakte opsigt, da den første gang blev præsenteret i 1952 på den svenske udstilling "Önskehem" i Marmorhallarna i Stockholm (kat.nr. 1038).


Jesper Bruun Rasmussen

SPECIALISTS IN DESIGN



Head of department
Peter Kjelgaard
+45 8818 1191
pkj@bruun-rasmussen.dk



Design
Ole Ravn
+45 8818 1192
olr@bruun-rasmussen.dk



Design
Amalie Hansen
+45 8818 1194
amh@bruun-rasmussen.dk



Design
Andreas Krabbe
+45 8818 1193
ank@bruun-rasmussen.dk



Paintings and design
Peter Beck – Aarhus
+45 8818 1186
pb@bruun-rasmussen.dk



Design
Peter Tholstrup – Aarhus
+45 8818 1195
pt@bruun-rasmussen.dk



Paintings and design
Frederik Bruun Rasmussen
+45 8818 1003
fbr@bruun-rasmussen.dk



Silver and branding
Alexa Bruun Rasmussen
+45 8818 1091
alexa@bruun-rasmussen.dk



Director of sales
Kasper Nielsen
+45 8818 1121
kn@bruun-rasmussen.dk

SILVER

Wednesday 8 March 3:30 pm

Lot 873 - 921





873
GEORG JENSEN

b. Rådvaed 1866, d. Hellerup 1935

A pair of sterling silver candlesticks with grapes. Spiral fluted stem and circular foot. Georg Jensen 1933-1944. Design no. 263. Designed 1926. Total weight 670 gr. H. 15 cm. (2)

Literature: David A. Taylor & Jason Laskey: "Georg Jensen Holloware - The Silver Fund Collection", ill. s. 120. DKK 30,000-40,000 / € 4,050-5,400

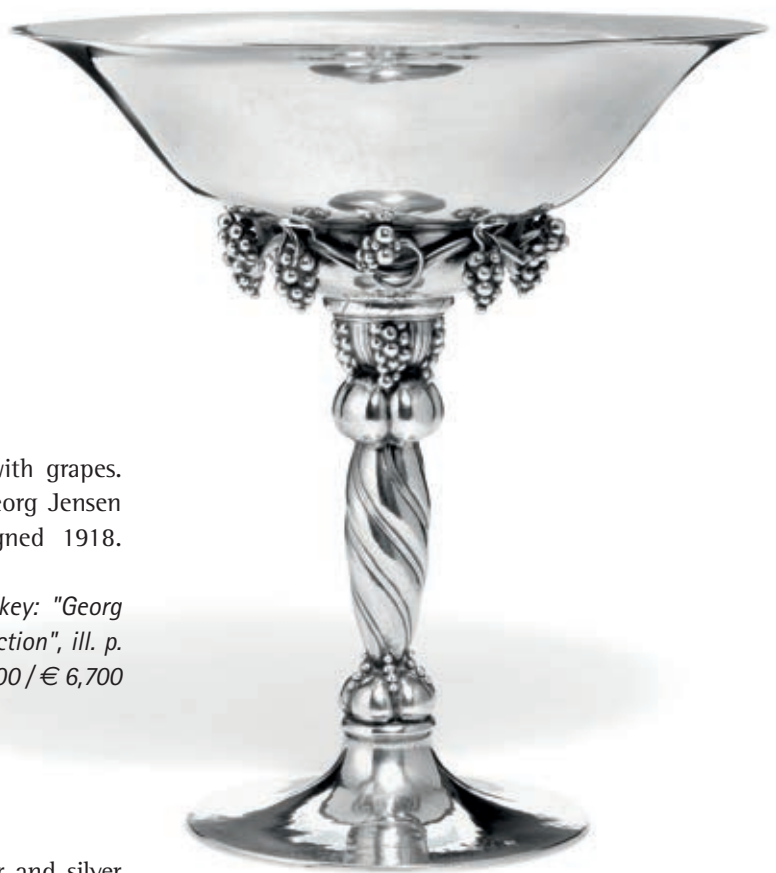
874
GEORG JENSEN

b. Rådvaed 1866, d. Hellerup 1935

A circular hammered sterling silver tureen and cover. Grape-handles, gape and leaf finial. Georg Jensen 1933-1944. Design no. 408 E. Designed 1925. Weight 1282 gr. H. 16 cm. L. 25 cm.

Literature: David A. Taylor & Jason Laskey: "Georg Jensen Holloware - The Silver Fund Collection", ill. p. 166. DKK 30,000-35,000 / € 4,050-4,700





875

875

GEORG JENSEN

b. Rådvaad 1866, d. Hellerup 1935

Large hammered sterling silver tazza with grapes. Spiral fluted stem and circular foot. Georg Jensen 1925-1932. Design no. 264 A. Designed 1918. Weight 1130 gr. H. 26,6 cm.

Literature: David A. Taylor & Jason Laskey: "Georg Jensen Holloware - The Silver Fund Collection", ill. p. 120. DKK 50,000 / € 6,700

876

GEORG JENSEN

b. Rådvaad 1866, d. Hellerup 1935

A set of seven hammered sterling silver and silver finger bowls with leaf and flower ornamentation. Georg Jensen resp. 1918 and 1921. Design no. 25. Total weight 1331 gr. H. 5,5 cm. Diam. 15,7 cm. (7)
Literature: David A. Taylor & Jason Laskey: "Georg Jensen Holloware - The Silver Fund Collection", ill. p. 60. DKK 30,000 / € 4,050



876

877

GEORG JENSEN

b. Rådvaad 1866, d. Hellerup 1935

A circular hammered sterling silver fruit dish with stylized ornaments and beaded rim. Georg Jensen 1925-1932. Designed 1919. Design no. 320 A. Weight 1102 gr. H. 4,2 cm. Diam. 36,4 cm.

Literature: David A. Taylor & Jason W. Laskey: "Georg Jensen Holloware - The Silver Fund Collection", ill. p. 141.

DKK 20,000 / € 2,700



877



878

878

JOHAN ROHDE

b. Randers 1856, d. Hellerup 1935

"Acorn". Sterling silver cutlery. Georg Jensen after 1945. Designed 1915. Weight excluding pieces with steel 3180 gr. (103)

Comprising:

- 12 dinner knives with long handle
- 12 dinner forks
- 12 dinner spoons
- 12 luncheon knives with long handle
- 12 luncheon forks
- 12 large tea spoons
- 12 pastry forks
- 12 coffee spoons
- 1 pie server
- 1 server with circular bowl
- 1 potato spoon
- 1 sauce ladle
- 1 pie knife
- 1 bottle opener with long handle
- 1 steak fork

DKK 30,000 / € 4,050

879

THORVALD BINDESBØLL

b. Copenhagen 1846, d. s.p. 1908

"Artichoke". A sterling silver bowl. Signed monogram. Made and marked by A. Michelsen, Copenhagen 1927. Designed 1900. Weight 425 gr. H. 8,5 cm. Diam. max. 16,3 cm.

Literature: Malene Dybbøl & Sabrina Vinther: "Hofjuveler A. Michelsen - Fra Stilkopi til Arkitektsølv", ill. pp. 87-88.

DKK 45,000 / € 6,050



879



880

880
THORVALD BINDESBØLL

b. Copenhagen 1846, d. s.p. 1908

A sterling silver bowl with stylized ornamentation. Made and marked by A. Michelsen anno 1901/1902. Weight 212 gr. H. 8,5 cm. Diam. 13,5 cm.

Literature: Reto Niggli: "Thorvald Binesbøll Keramik und Silber", Sammlung Helga Schaefer Starnberg, ill. pp. 102-103.

DKK 30,000 / € 4,050

881
GEORG JENSEN

b. Rådvaed 1866, d. Hellerup 1935

"Blossom". An oval hammered sterling silver bread tray on a circular base. Georg Jensen 1925-1932. Design no. 2 A. Weight 512 gr. H. 5,5 cm. W. 19,3 cm. L. 30 cm.

Literature: David A. Taylor & Jason Laskey: "Georg Jensen Holloware - The Silver Fund Collection", ill. p. 43.

DKK 15,000-20,000 / € 2,000-2,700



881

882 ©
GEORG JENSEN

b. Rådvaad 1866, d. Hellerup 1935

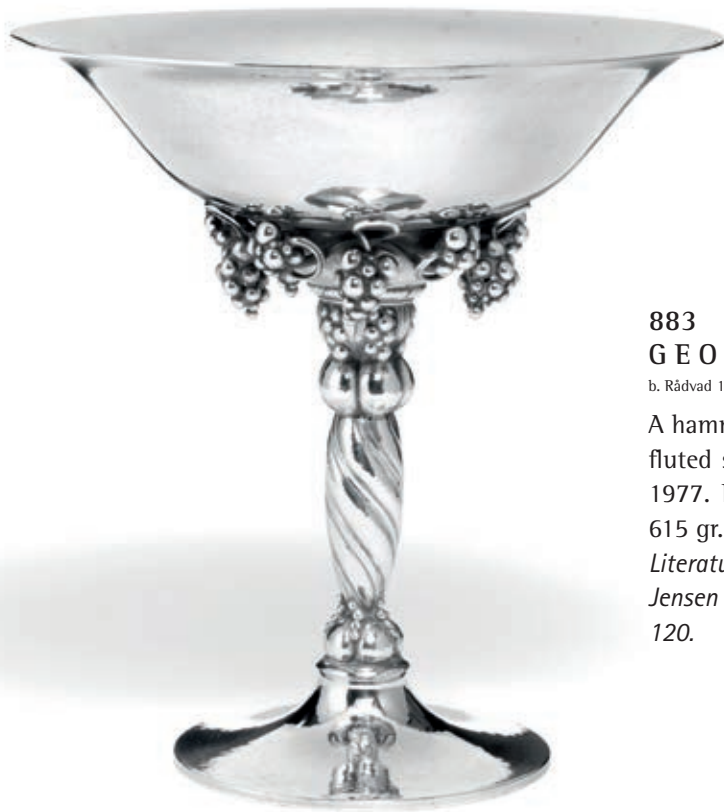
A large hammered silver chairman's bell with ivory handle, carved in the shape of a boy and a fish. On a edged ebony base with silver inlays. Georg Jensen anno 1918. Design no. 266. Designed 1918. Weight excluding base 1269 gr. H. 30,5 cm. H. incl. base 35 cm.

Literature: Janet Drucker: "Georg Jensen - A Tradition of splendid Silver", ill. p. 263.

DKK 60,000-80,000 / € 8,050-11,000



882



883

883
GEORG JENSEN

b. Rådvaed 1866, d. Hellerup 1935

A hammered sterling silver tazza with grapes. Spiral fluted stem and circular foot. Georg Jensen 1945-1977. Design no. 263 B. Formgivet 1918. Weight 615 gr. H. 18,9 cm.

Literature: David A. Taylor & Jason Laskey: "Georg Jensen Holloware - The Silver Fund Collection", ill. p. 120.
DKK 20,000 / € 2,700

884
JOHAN ROHDE

b. Randers 1856, d. Hellerup 1935

"Acorn". Sterling silver cutlery. Georg Jensen after 1945. Designed 1915. Weight excluding pieces with steel 1880 gr. (75)

Comprising:

- 8 dinner knives with long handle*
- 8 dinner forks*
- 8 luncheon knives with long handle*
- 8 luncheon forks*
- 12 dessert spoons*
- 12 pastry forks*
- 11 tea spoons*
- 1 sauce ladle with steel*
- 1 bottle opener with long handle*
- 1 pie server*
- 1 small server with steel*
- 1 large server with steel*
- 2 medium serving spoons with steel*
- 1 pie knife with steel*

DKK 25,000-30,000 / € 3,350-4,050



884



885
JOHAN ROHDE

b. Randers 1856, d. Hellerup 1935

A pair of two branch sterling silver candelabra. Circular bases, leaves and beads. Georg Jensen 1925-1932. Design no. 343. Total weight 1152 gr. H. 25 - 25,6 cm. W. 16,5 - 17 cm. (2)

Literature: David A. Taylor & Jason W. Laskey: "Georg Jensen Holloware", The Silver Fund, ill. p. 156.

DKK 50,000-60,000 / € 6,700-8,050



886



887

886 ©

GEORG JENSEN

b. Rådvaed 1866, d. Hellerup 1935

"Blossom". Hammered sterling silver coffeeset. Comprising a coffeepot, a creamer and a sugar bowl. Coffeepot and creamer's handle of carved ivory. Georg Jensen resp. 1915-1930 and 1925-1932. Design no. 100 B and 2 D. Total weight 1157 gr. H. 7 - 20,5 cm. (3)

CITES-certificate valid within the European Union is included. DKK 20,000 / € 2,700



888

887

GEORG JENSEN

b. Rådvaed 1866, d. Hellerup 1935

"Blossom". An oval hammered sterling silver tray. Georg Jensen 1933-1944. Design no. 2 P. Weight 368 gr. H. 1,5 cm. W. 17,5 cm. L. 25,8 cm.

Literature: David A. Taylor & Jason Laskey: "Georg Jensen Holloware - The Silver Fund Collection", ill. p. 41. DKK 15,000 / € 2,000

888

GEORG JENSEN

b. Rådvaed 1866, d. Hellerup 1935

A pair of hammered sterling silver bottle coasters with grapes and leaves. Carved mahogany bases. Georg Jensen 1915-1927. Design no. 229. Total weight 998 gr. H. 5,9 cm. and 6,1 cm. Diam. 14 cm. (2)

Literature: David A. Taylor & Jason Laskey: "Georg Jensen Holloware - The Silver Fund Collection", ill. p. 110. DKK 50,000 / € 6,700



889

889
GEORG JENSEN

b. Rådvaed 1866, d. Hellerup 1935

A hammered sterling silver tazza with grapes. Spiral fluted stem and circular foot. Georg Jensen anno 1921. Design no. 263. Formgivet 1918. Weight 559 gr. H. 18,7 cm.

Literature: David A. Taylor & Jason Laskey: "Georg Jensen Holloware - The Silver Fund Collection", ill. p. 120.

DKK 25,000 / € 3,350



890

890
JOHAN ROHDE

b. Randers 1856, d. Hellerup 1935

A hammered sterling silver pitcher with carved ebony handle. Georg Jensen 1925-1932. Design no. 432 E. Designed 1925. Weight 445 gr. H. 22,8 cm.

Literature: David A. Taylor & Jason Laskey: "Georg Jensen Holloware - The Silver Fund Collection", ill. p. 170.

DKK 30,000 / € 4,050



891

891

GEORG JENSEN

b. Rådvað 1866, d. Hellerup 1935

A two branch hammered sterling silver candelabrum. Georg Jensen 1945-1977. Design no. 324. Designed 1919. Weight 1154 gr. H. 22 cm.

Literature: David A. Taylor & Jason Laskey: "Georg Jensen Holloware - The Silver Fund Collection", ill. p. 144.

DKK 50,000 / € 6,700



892
HARALD NIELSEN

b. Barse 1892, d. 1977

A set of six sterling silver white wine goblets. Georg Jensen after 1945. Design no. 532 B. Designed 1928. Total weight 1069 gr. H. 14,4 - 14,7 cm. (6)
Literature: David A. Taylor & Jason Laskey: "Georg Jensen Holloware - The Silver Fund Collection", ill. p. 195.
 DKK 30,000 / € 4,050

892



893
JOHAN ROHDE

b. Randers 1856, d. Hellerup 1935

Oval hammered sterling silver sauceboat. Circular foot. Georg Jensen 1945-1977. Design no. 43. Designed 1908. Weight 250 gr. H. 10,8 cm. L. 16,5 cm.
 DKK 12,000-15,000 / € 1,600-2,000

893



894

894

HARALD NIELSEN

b. Baarse 1892, d. 1977

"Pyramid". A sterling silver tureen and cover with two handles. Georg Jensen 1945-1977. Design. no. 600 A. Designed 1930. Weight 1025 gr. H. max. 12 cm. L. 24,5 cm.

Literature: David A. Taylor & Jason Laskey: "Georg Jensen Holloware - The Silver Fund Collection", ill. p. 210. DKK 30,000 / € 4,050

895

HARALD NIELSEN

b. Baarse 1892, d. 1977

"Pyramid". Sterling silver cutlery. Georg Jensen 1933-1944 and 1945-1951. Designed 1926. Weight excluding pieces with steel 2943 gr. (79)

Comprising:

13 dinner knives with long handle

12 dinner forks

12 dinner spoons

12 luncheon knives with short handle

12 luncheon forks

2 long cold cuts forks

2 medium cold cuts forks

2 potato spoons

DKK 30,000 / € 4,050



895



896

896
HENNING KOPPEL

b. Copenhagen 1918, d. s.p. 1981

A sterling silver teapot with guaiacum wood handle. Georg Jensen after 1977. With date letter F10=1980. Design no. 1051. Designed 1956. Weight 635 gr. H. 13,5 cm.

Literature: Niels-Jørgen Kaiser: "Henning Koppels Verden", ill. p. 85. DKK 20,000 / € 2,700

897
HENNING KOPPEL

b. Copenhagen 1918, d. s.p. 1981

A circular sterling silver bowl. Georg Jensen 1945-1977. Design no. 1131 A. Designed 1965. Weight 1072 gr. H. 7 cm. Diam. 28,7 cm.

Literature: David A. Taylor & Jason Laskey: "Georg Jensen Holloware - The Silver Fund Collection", ill. p. 317. DKK 12,000-15,000 / € 1,600-2,000



897



898

898

HENNING KOPPEL

b. Copenhagen 1918, d. s.p. 1981

A large sterling silver bowl on sculptural openwork base. Georg Jensen after 1977. With date letter Y10=1997. Design no. 980. Designed 1948. Weight 3913 gr. H. 16 cm. L. max. 40,3 cm.

The bowl was awarded a gold medal at the Triennale in Milan in 1951.

Litterature: Niels-Jørgen Kaiser: "Henning Koppels Verden", ill. p. 65.

Litterature: Viggo Sten Møller: "Henning Koppel", ill. p. 11. DKK 60,000-80,000 / € 8,050-11,000



900

HENNING KOPPEL

b. Copenhagen 1918, d. s.p. 1981

Sterling silver and ebony writing set. Comprising a paper tray, a paper knife, a magnifying glass, a pen holder and a ruler. Georg Jensen after 1945-1977 and after 1977. Magnifying glass and pen holder with date letters F10=1980 and D10=1978. Design no. 1234, 392, 393, 1243 and 394. Designed 1978. Total weight 3166 gr. (5)

Literature: David A. Taylor & Jason Laskey: "Georg Jensen Holloware - The Silver Fund Collection", ill. p. 325.

Litterature: Niels-Jørgen Kaiser: "Henning Koppels Verden", ill. p. 112.

DKK 40,000-60,000 / € 5,400-8,050



900

899

HENNING KOPPEL

b. Copenhagen 1918, d. s.p. 1981

A sculptural three branch sterling silver candelabrum. Georg Jensen 1945-1977. Design no. 956. Designed 1946. Weight 1170 gr. H. max. 8,7 cm. L. 16,8 cm.

Literature: Niels-Jørgen Kaiser: "Henning Koppels Verden", ill. p. 51-54.

Literature: Viggo Sten Møller: "Henning Koppel", ill. p. 6.

DKK 40,000 / € 5,400



901

901
SIGVARD BERNADOTTE

b. 1907, d. 2002

Sterling silver cocktail pitcher with "harlequin" pattern.
Georg Jensen 1945-1977. Design no. 819 A. Weight
410 gr. Designed 1937. H. 14,5 cm.

*Literature: Lise Funder: "Dansk Sølv i det 20. århundrede",
ill. p. 100.*

*Literature: David A. Taylor & Jason W. Laskey, "Georg
Jensen Holloware - The Silver Fund Collection", ill. p. 268.*

DKK 18,000-20,000 / € 2,400-2,700



902



903

902
SIGVARD BERNADOTTE

b. 1907, d. 2002

A sterling silver dish with cover. Handle and finial of carved ebony. Georg Jensen 1945-1951. Design no. 909. Designed 1942. Weight 541 gr. H. 8,5 cm. L. 27 cm. *DKK 25,000 / € 3,350*

903
SIGVARD BERNADOTTE

b. 1907, d. 2002

A circular dish with cover and two handles. Line pattern. Georg Jensen 1945-1977. Design no. 958. Designed 1949. Weight 668 gr. H. 10. L. 23,7. *DKK 30,000-40,000 / € 4,050-5,400*



904

904
SIGVARD BERNADOTTE

b. 1907, d. 2002

"Bernadotte". A large sterling silver cutlery set. Georg Jensen after 1945. Designed 1939. Weight excluding pieces with steel 7226 gr. (204)

Comprising:

12 fish knives

12 fish forks

12 bouillon spoons

11 dinner knives with long handle
and serrated blade

12 dinner forks

12 dinner spoons

12 luncheon knives with short knives

4 luncheon knives with long handle

10 luncheon forks

1 salad fork

13 dessert spoons

12 tea spoons

12 coffee spoons

12 mocha spoons

12 fruit forks

11 fruit knives

2 butter knives

3 marmelade spoons

1 sugar spoon

3 long cold cuts forks

2 short cold cuts forks

1 medium salad set

2 servers

1 large server

2 sauce ladles

1 confection tongs

1 herring fork

2 potato spoons

2 small serving spoons

1 bottle opener with short handle

4 salt cellars with blue enamel

3 salt spoons

3 steak forks

DKK 80,000-100,000 / € 11,000-13,500



905
SIGVARD BERNADOTTE

b. 1907, d. 2002

A sterling silver dish with cover. Line pattern. Ebony finial and handle with carvings. Georg Jensen 1945-1977. Design no. 900. Weight 853 gr. H. 11 cm. L. 32,5 cm. *DKK 20,000 / € 2,700*



905



906

906 ©
IB BLUITGEN

b. 1921, d. 2013

Sterling silver teapot and sugar bowl. Teapot with ivory finial. Georg Jensen after 1945. Design no. 984. Total weight 1039 gr. H. resp. 20. and 5,5 cm. (2) CITES-certificate valid within the European Union is included.

Literature: David A. Taylor & Jason W. Laskey: "Georg Jensen Holloware", The Silver Fund, ill. p. 297.

DKK 20,000 / € 2,700

907
IBI TRIER MØRCH

b. 1910, d. 1990

Two rectangular sterling silver trays with curved sides. Made and marked by A. Michelsen with date letter resp. L9=1961 and 19=1959. Total weight 4646 gr. Smallest tray: H. max. 3,7 cm. W. 32 cm. L. 45,6 cm. Large tray: H. max. 4,3 cm. W. 35 cm. L. 52 cm. (2) DKK 25,000-30,000 / € 3,350-4,050



907

908 ^{CD} ©

KARL GUSTAV HANSEN

b. Kolding 1914, d. 2002

A hammered sterling silver art déco pitcher. Asymmetrical shape on profiled, oval base with curved ivory handle. Made and marked by Hans Hansen anno 1937. Designed 1934. Design no. 173. Weight 511 gr. H. 14,5 cm.

Literature: Jörg Schwandt: "Karl Gustav Hansen - Sølv/Silver 1930-1994", ill. p. 83, and model ill. p. 145. DKK 20,000-25,000 / € 2,700-3,350



908

909

HENNING KOPPEL

b. Copenhagen 1918, d. s.p. 1981

A circular sterling silver bowl with gilded inside. Georg Jensen after 1977, with date letter D10=1978. Design no. 1235 H. Weight 360 gr. H. 7,5 cm. Diam. 18,3 cm.

DKK 12,000 / € 1,600



909



910

910

THORVALD BINDESBØLL

b. Copenhagen 1846, d. s.p. 1908

"Artichoke". A hammered sterling silver bowl. Signed monogram. Made and marked by A. Michelsen anno 1926. Designed 1900. Weight 366 gr. H. 9 cm. Diam. 16,5 cm.

Literature: Malene Dybbøl & Sabrina Vinther: "Hofjuveler A. Michelsen - Fra Stilkopi til Arkitektsølv", ill. pp. 87-88. DKK 45,000 / € 6,050

911

KAY FISKER

b. Frederiksberg 1893, d. København 1965

A sterling silver water pitcher. Made and marked by A. Michelsen anno 1932. Designed 1927. Weight 615 gr. H. 24 cm.

Literature: Malene Dybbøl & Sabrina Vinther: "Hofjuveler A. Michelsen - Fra stilkopi til arkitektsølv", ill. p. 105. DKK 20,000 / € 2,700



911

912

KAY FISKER

b. Frederiksberg 1893, d. København 1965

Circular sterling silver fruit bowl with pierced thread pattern with clear glass liner. Made and marked by A. Michelsen anno 1948. Weight excluding glass liner 603 gr. H. 9,5 cm. Diam. 28 cm.

Literature: Malene Dybbøl & Sabrina Vinther: "Hofjuveler A. Michelsen - fra stilkopi til arkitektsølv", ill. p. 111. DKK 20,000 / € 2,700



912



913

913
REY URBAN

b. Sverige 1929

A sterling silver teapot with chased surface. Curved guaiacum wood handle. Made and marked by Åge Fausing, Denmark. Weight 962 gr. H. 15,3 cm.

DKK 15,000-20,000 / € 2,000-2,700



914

SØREN GEORG JENSEN

b. Copenhagen 1917, d. s.p. 1982

A two branch sterling silver candelabrum. Georg Jensen 1945-1977. Design no. 1087. Designed 1960. Weight 837 gr. H. 17,3 cm. Inner diam. at candle holders: 2,3 cm.

Literature: Janet Drucker: "Georg Jensen - A Tradition of splendid Silver", ill. p. 237. DKK 25,000 / € 3,350



914

915

VAGN AAGE HEMMINGSEN

Oblong sterling silver dish, open handles with carved ebony. Made and marked by Frantz Hingelberg, Aarhus. Weight 1420 gr. H. max. 10 cm. W. 19,5 cm. L. 71,5 cm. DKK 20,000 / € 2,700



915



916

916

JOHAN ROHDE

b. Randers 1856, d. Hellerup 1935

A hammered sterling silver pitcher with carved ebony handle. Georg Jensen 1945-1977. Design no. 432 E. Designed 1925. Weight 549 gr. H. 22,3.

Literature: David A. Taylor & Jason Laskey: "Georg Jensen Holloware - The Silver Fund Collection", ill. p. 170.

DKK 30,000 / € 4,050

917

HARALD NIELSEN

b. Baarse 1892, d. 1977

"Pyramid". Sterling silver cutlery. Georg Jensen 1933-1944, 1944-1951 and after 1945. Designed 1926. Weight excluding pieces with steel 2440 gr. (63)

Comprising:

13 dinner forks

14 dessert spoons

12 pastry forks

13 coffee spoons

1 cold cuts fork

2 servers with steel

1 small salad set with steel

1 large serving spoon

1 medium serving spoon

1 small serving spoon

1 bouillon spoon

1 sauce ladle

1 short bottle opener

1 salt spoon

DKK 20,000 / € 2,700



917



918

918
HARALD NIELSEN

b. Baarse 1892, d. 1977

A set of six sterling silver white wine goblets. Georg Jensen after 1945. Design no. 532 B. Designed 1928. Total weight 1030 gr. H. 14,5 cm. (6)

Literature: David A. Taylor & Jason Laskey: "Georg Jensen Holloware - The Silver Fund Collection", ill. p. 195. DKK 30,000 / € 4,050

919
HARALD NIELSEN

b. Baarse 1892, d. 1977

A circular dish on openwork foot with beads. Georg Jensen 1945-1977. Design no. 493. Weight 957 gr. H. 5,5 cm. Diam. 28,5 cm. DKK 20,000 / € 2,700



919



920



921

920
HARALD NIELSEN

b. Baarse 1892, d. 1977

Oval sterling silver tray with profiled rim. Georg Jensen 1945-1977. Design no. 875 C. Weight 1592 gr. H. 1,8 cm. W. 35 cm. L. 43,2 cm. *DKK 15,000 / € 2,000*

921
HARALD NIELSEN

b. Baarse 1892, d. 1977

A hammered sterling silver cocktail shaker. Cover with leaf and berry finial. Georg Jensen 1945-1951. Design no. 462 C. Weight 768 gr. H. 30,5 cm.

Literature: David A. Taylor & Jason W. Laskey: "Georg Jensen Holloware - The Silver Fund Collection", ill. p. 177.

DKK 25,000 / € 3,350



CERAMICS

Wednesday 8 March

Lot 922 - 945

922 ^{CD}

ALEV EBÜZZIYA SIESBYE

b. Istanbul 1938

Circular stoneware bowl decorated with light blue glaze. The upper rim with unglazed line decoration. Signed Alev '85. Unique. H. 13,5 cm. Diam. 26 cm.

DKK 30,000-40,000 / € 4,050-5,400

923 ^{CD}

ALEV EBÜZZIYA SIESBYE

b. Istanbul 1938

Circular stoneware dish. Decorated with dark grey glaze with greyish purple elements. Signed Alev '79. Unique. H. 4,8 cm. Diam. 19,8 cm.

DKK 8,000-10,000 / € 1,100-1,350



922



923



924

924 ^{CD}

ALEV EBÜZZIYA SIESBYE

b. Istanbul 1938

Large circular stoneware bowl. Decorated with light turquoise blue glaze with some light brown elements. Signed Alev '82. Unique. H. 25 - 26 cm. Diam. ca. 47 cm.

Acquired by present owner in the early 1980s.

DKK 30,000-40,000 / € 4,050-5,400

925

AXEL SALTO

b. Copenhagen 1889, d. Frederiksberg 1961

Stoneware vase modelled in sprouting style. Decorated with sung glaze. Signed Salto, 21446. Royal Copenhagen. Made 1961. H. 14 cm.

DKK 25,000 / € 3,350

926

AXEL SALTO

b. Copenhagen 1889, d. Frederiksberg 1961

Stoneware vase modelled in budded style, decorated with sung glaze. Signed Salto, 21329. Royal Copenhagen. Made 1966. H. 23,5 cm.

DKK 40,000-50,000 / € 5,400-6,700



926



925

927

AXEL SALTO

b. Copenhagen 1889, d. Frederiksberg 1961

Large stoneware vase modelled in sprouting style. Decorated with sung glaze with blueish green elements. Signed Salto, 20811. Made 1975-1979. Royal Copenhagen. H. 36 cm.

DKK 80,000-100,000 / € 11,000-13,500



927



928

928
AXEL SALTO

b. Copenhagen 1889, d. Frederiksberg 1961

Stoneware vase modelled in sprouting style. Decorated with solfatara glaze. Signed Salto, 21452. Royal Copenhagen. Made 1958. H. 23 cm.

DKK 80,000 / € 11,000

929
AXEL SALTO

b. Copenhagen 1889, d. Frederiksberg 1961

Circular stoneware bowl, exterior with branches. Decorated with solfatara glaze. Signed Salto. Royal Copenhagen. H. 11 cm. Diam. 27,5 cm.

DKK 30,000 / € 4,050



929



930

930
AXEL SALTO

b. Copenhagen 1889, d. Frederiksberg 1961

"The Summer Vase". Large stoneware vase modelled with branches, fruits and birds. Decorated with sung glaze. Signed Salto, 20250. Royal Copenhagen. Made 1969-1974. H. 32 cm. DKK 125,000-150,000 / € 17,000-20,000

931 ^{CD}

PER WEISS

b. Melby 1953

Stoneware floor vase with windings in relief. Decorated with white, reddish brown and blue glaze. Inside with bluish black glaze. Stamped monogram. Unique. H. 68 cm. *DKK 40,000 / € 5,400*

932 ^{CD}

PER WEISS

b. Melby 1953

Stoneware floor vase with windings in relief. Decorated with beige, blue and black glaze with reddish brown elements. Inside decorated with bluish black glaze. Stamped monogram. Unique. H. 66 cm. *DKK 35,000 / € 4,700*

933 ^{CD}

ERIK REIFF

b. 1923

Circular stoneware bowl, exterior with scratched decoration. Decorated with solfatara glaze. Signed monogram. Royal Copenhagen. Made 1980-1984. Unique. H. 18,5 cm. Diam. 35 cm.

DKK 10,000-15,000 / € 1,350-2,000



931



932



933



934

934
ARNE BANG

b. Frederiksberg 1901, d. Fensmark 1983

Five stoneware vases modelled with resp. grooves, handles and branch with leaves. Decorated with pale grey glazes. Four signed monogram, three numbered resp. 121, 6 and 179. H. 10,5 - 16,5 cm. (5)

DKK 25,000 / € 3,350

935
ARNE BANG

b. Frederiksberg 1901, d. Fensmark 1983

Circular stoneware dish, exterior modelled with vertical fluted pattern. Decorated with green glaze. Signed monogram, 154. H. 7,5 cm. Diam. 34 cm.

DKK 20,000 / € 2,700



935



936



937

936
ARNE BANG

b. Frederiksberg 1901, d. Fensmark 1983

Circular stoneware bowl, exterior modelled with vertical fluted pattern. Decorated with green and black glaze. Signed monogram, 114. H. 11,5 cm. Diam. 30,5 cm. *DKK 25,000 / € 3,350*

937
ARNE BANG

b. Frederiksberg 1901, d. Fensmark 1983

Circular stoneware bowl, exterior modelled with vertical fluted pattern. Decorated with greyish brown glaze with light grey elements. Signed monogram, 114. H. 11,8 cm. Diam. max. 30,5 cm.

DKK 12,000-15,000 / € 1,600-2,000

938 ^{CD}

GERTRUD VASEGAARD

b. Rønne 1913, d. 2007

Six-sided stoneware vase decorated with transparent glaze and brown glazed geometric decoration. Signed monogram, 1991. Unique. H. 16,5 cm. Diam. max. 18,4 cm. *DKK 10,000 / € 1,350*



938



939

939

AXEL SALTO

b. Copenhagen 1889, d. Frederiksberg 1961

Gourd-shaped stoneware vase decorated with olivin glaze. Signed Salto. Royal Copenhagen. H. 22,5 cm.

DKK 20,000-25,000 / € 2,700-3,350

940

ARNE BANG

b. Frederiksberg 1901, d. Fensmark 1983

Cylindrical stoneware floor vase with vertical fluted pattern. Decorated with pale grey glaze. Signed monogram. H. 62 cm.

DKK 15,000-20,000 / € 2,000-2,700



940



941

941

AXEL SALTO

b. Copenhagen 1889, d. Frederiksberg 1961

Fruit-shaped stoneware vase with narrow mouth. Decorated with celadon glaze. Signed Salto, 20818. Royal Copenhagen. H. 21,5 cm.

DKK 30,000-40,000 / € 4,050-5,400



942

942 ^{CD}

J AIS NIELSEN

b. Copenhagen 1885, d. Hellerup 1961

"Jacob wrestles with the angel". Stoneware figure decorated with transparent turquoise glaze. Signed Jais, 20650. Made 1965. Royal Copenhagen. Unique. H. 73 cm. *DKK 25,000/€ 3,350*

943 ^{CD}

CARL HALIER

b. 1873, d. 1948

KNUD ANDERSEN

b. 1892, d. 1966

Cylindrical stoneware lid jar. Decorated with dilou glaze. Signed monogram. Royal Copenhagen. Lid and stand of patinated and partly gilded bronze. Stamped monogram KA for Knud Andersen. Royal Copenhagen. Unique. H. 24 cm.

DKK 20,000 / € 2,700

944 ^{CD}

JAIS NIELSEN

b. Copenhagen 1885, d. Hellerup 1961

Large stoneware vase modelled with religious scene. Decorated with dilou glaze. Signed Jais, 20758. Royal Copenhagen. Unique. H. 49 cm.

DKK 20,000-25,000 / € 2,700-3,350



943



944



945

945 ^{CD}

KNUD ANDERSEN

b. 1892, d. 1966

NILS THORSSON

b. Eslöv, Skåne County 1898, d. 1975

Drop-shaped stoneware lid jar. Decorated with butterfly-wing glaze. Signed monogram. Royal Copenhagen. Made 1957. Lid and base of patinated and partly gilded bronze. Stamped monogram KA for Knud Andersen. Royal Copenhagen. Unique. H. 23 cm. *DKK 15,000 / € 2,000*

FURNITURE, LAMPS
AND CARPETS

Thursday 9 March 4 pm

Lot 946 - 1116



Lot 1116

946

FINN JUHL

b. Frederiksberg 1912, d. Ordrup 1989

"FJ 45". A teak easy chair. Seat, back and loose seat cushion upholstered with light blue wool. Designed 1945. This example made circa 1960s by cabinetmaker Niels Vodder, stamped by maker.

DKK 40,000-50,000 / € 5,400-6,700



946

947

FINN JUHL

b. Frederiksberg 1912, d. Ordrup 1989

"FJ 53". Freestanding two seater teak sofa with "floating" armrests on brass fittings. Sides, seat and back upholstered with greenish-yellow wool. Designed 1953. This example made 1950-1960s by cabinetmaker Niels Vodder. L. 130 cm.

The model was presented at The Copenhagen Cabinetmakers' Guild Exhibition at Designmuseum Danmark, 1953.

Literature: Grete Jalk [ed.]: "40 Years of Danish Furniture Design", vol. 3, ill. pp. 270-271.

DKK 50,000 / € 6,700



947



948

948

FINN JUHL

b. Frederiksberg 1912, d. Ordrup 1989

"FJ 45". A teak easy chair. Sides, back and loose seat cushion upholstered with blue wool. Designed 1945. This example made 1950s by cabinetmaker Niels Vodder. *Provenance: Doctor N.A. Sehested, Aarhus who bought the chair in the 1950s, hence private collection.*

DKK 50,000 / € 6,700

949 ^{CD}

PEDER MOOS

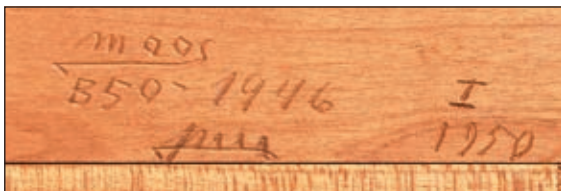
b. Nybøl 1906, d. Bredebro, Tønder 1991

A rectangular cherry wood side table on four "drumstick" legs. Rounded edges and light wood joints. Signed Moos, B50-1946, I 1950. This example made 1946 by cabinetmaker Peder Moos. H. 64,5 cm. L. 60 cm. W. 47,5 cm. *Acquired by the present owner's uncle directly from Peder Moos.*

DKK 40,000-50,000 / € 5,400-6,700



949



949



950

950
ANNA-GRETA SJÖQVIST

Sweden. 20th century.

Handwoven wool carpet in "rölakan" flat weave technique with geometric pattern in beige, brown, grey and yellow shades. Signed AGS. L. 261 cm. W. 155 cm. *DKK 20,000 / € 2,700*

951

SEVERIN HANSEN JR.

Denmark, 20th century

"Bridge lamp". A pair of stained beech floor lamps on tripod foot, pleated shade. These examples manufactured 1950s by Haslev Møbelsnedkeri. H. 153 cm. (2)

Literature: "Bygge og Bo", vol. 16, autumn 1950. No. 2-3. DKK 20,000 / € 2,700



952

IB KOFOD-LARSEN

b. 1921, d. 2003

A pair of easy chairs with teak frame. Upholstered with original greyish brown wool. Model 4346. These examples manufactured 1960s by Fritz Hansen, with maker's label. (2)

DKK 80,000 / € 11,000





953

JØRGEN DITZEL

b. Frederiksberg 1921, d. København 1961

NANNA DITZEL

f. København 1923, d. sst. 2005

A rare freestanding two-seater sofa with mahogany frame. Curved front, sides and back upholstered with light grey wool. Designed 1949. This example made ca. 1949 by Knud Willadsen Cabinetmakers. L. 145 cm.

Literature: Henrik Sten Møller: "Motion and Beauty - the Book of Nanna Ditzel", ill. and mentioned pp. 42-43.

DKK 80,000-120,000 / € 11,000-16,000



953





954

954

HANS J. WEGNER

b. Tønder 1914, d. Gentofte 2007

"JH 563". Freestanding desk with solid oak frame. Teak top with two drawers in front. Stretcher with V-shape, brass fittings. Designed 1950. This example made circa 1960s by cabinetmaker Johannes Hansen. H. 74,5 cm. L. 172 cm. W. 84 cm.

The model was presented at The Copenhagen Cabinet-makers' Guild Exhibition at Designmuseum Danmark in 1950.

Literature: Grete Jalk [ed.]: "40 Years of Danish Furniture Design", vol. 3, ill. p. 142. DKK 75,000 / € 10,000



955

HANS J. WEGNER

b. Tønder 1914, d. Gentofte 2007

"The Chair". A pair of mahogany armchairs. Seats with woven cane. Model JH 501. Designed 1949. These examples made 1970s by cabinetmaker Johannes Hansen, with maker's label. (2)

DKK 30,000-40,000 / € 4,050-5,400



955





956

956

MARIANNE RICHTER

b. Helsingborg 1916, d. Mölle 2010

Small handwoven wool carpet in mixed rölakan flat weave and rya technique. Geometric pattern in yellow and beige shades. Made by AB Märta Måås-Fjetterström. L. 182 cm.

W. 103 cm.

DKK 25,000 / € 3,350

957

HANS J. WEGNER

b. Tønder 1914, d. Gentofte 2007

"New Pappa Bear Chair". Easy chair with wide oak armrests and legs, seat, sides and back upholstered with light wool. Model AP 69. This example manufactured 1970's by AP Stolen.

Literature: AP-Stolen catalogue, 1969

Literature: "Mobilia", no. 262-263, 1977.

DKK 80,000-100,000 / € 11,000-13,500



957

958

HANS J. WEGNER

b. Tønder 1914, d. Gentofte 2007

"Papa Bear". Easy chair and stool with oak legs, chair with teak "nails". Upholstered with pale grey wool, seat cushion upholstered with light grey wool with narrow blue stripes. Model AP 19 and AP 29. Designed 1951. These examples manufactured 1954 by AP Stolen, Copenhagen. (2)

Provenance: Acquired in 1954 at "Ny Form Design Møbler", Copenhagen.

DKK 50,000-60,000 / € 6,700-8,050

959

HANS J. WEGNER

b. Tønder 1914, d. Gentofte 2007

"CH 304". A teak sideboard with oak cross-leg frame. Brass stretchers. Front with six drawers and two sliding doors. Interior with trays and adjustable shelves. This example manufactured circa 1960s by Carl Hansen & Søn. H. 126 cm. D. 45 cm. L. 168 cm.

DKK 30,000-40,000 / € 4,050-5,400

960

HANS J. WEGNER

b. Tønder 1914, d. Gentofte 2007

"Mama Bear". High back easy chair with oak legs and teak armrests. Sides, seat and back upholstered with white fabric. Model AP 28. Designed 1954. This example manufactured ca. 1960s by AP-Stolen. *The model was presented at the exhibition "Købestævnet" in Fredericia, 1954.*

Literature: "Dansk Kunsthåndværk", no. 9, September 1954, p. 143.

Literature: "Bygge og Bo", June 1955, ill. p. 41.

DKK 25,000 / € 3,350





959



960



961
ERIK WØRTS

b. København 1916, d. Herlev 1997

Desk of teak and elm. Front with four drawers with eye-shaped double handles. This example made circa 1951 by cabinetmaker Henrik Wørts. H. 75 cm. W. 81 cm. L. 154 cm.

This model was presented at The Copenhagen Cabinet-makers' Guild Exhibition in 1951.

Literature: Grete Jalk [ed.]: "40 Years of Danish Furniture Design", vol. 3, ill. p. 201. DKK 20,000 / € 2,700

962
BØRGE MOGENSEN

b. Aalborg 1914, d. Gentofte 1972

A pair of teak cabinets. Interior with shelves and maple trays, brass fittings. Model A 232. These examples manufactured ca. 1950s by C.M. Madsen for FDB Møbler. H. 94 cm. W. 122 cm. D. 45 cm. (2)

DKK 25,000 / € 3,350



962



963

963

ERIK OLE JØRGENSEN

b. Frederiksberg 1925, d. Vedbæk 2002

FOLKE PÅLSSON

Denmark. 20th century.

Three-seater box sofa with mahogany frame. Seat, sides and back with cane weave. Designed 1947. This example made circa 1960s by cabinetmaker K. Thomsen. L. 196 cm.

Literature: Grete Jalk [ed.]: "40 years of Danish Furniture Design - The Copenhagen Cabinetmakers' Guild Exhibitions", described and ill. vol. 3, pp. 36-37.

DKK 20,000-30,000 / € 2,700-4,050



964

964

BØRGE MOGENSEN

b. Aalborg 1914, d. Gentofte 1972

Rare long daybed with pine wood frame . Mattress and three loose back cushions upholstered with resp. light- and dark brown wool. This example manufactured 1950s by Fredericia Stolefabrik. H. 60 cm. W. 86 cm. L. 250 cm.

Provenance: originally rom the estate of Bruno Mattsson's according to seller.

DKK 40,000-50,000 / € 5,400-6,700

965

BØRGE MOGENSEN

b. Aalborg 1914, d. Gentofte 1972

"The Spanish Chair". A pair of oak easy chairs. Seat and back with patinated leather. Model 2226. Designed 1958. These examples manufactured circa 1970s by Fredericia Stolefabrik. (2)

DKK 25,000-30,000 / € 3,350-4,050





965



966



967

966

SWEDISH DESIGN

Handwoven wool carpet in "rölakan" flat weave technique with polychrome geometric pattern in light green, yellow and brown shades on a light base. Signed. L. 265 cm. W. 189 cm. *DKK 15,000 / € 2,000*

967

BØRGE MOGENSEN

b. Aalborg 1914, d. Gentofte 1972

"Daybed". Solid oak frame with loose cushion upholstered with pale wool. This example manufactured ca. 1960s by Fredericia Stolefabrik. L. 190 cm. W. 140 cm. H. 36 cm.

DKK 25,000 / € 3,350



968

968

JØRGEN KASTHOLM

b. Roskilde 1931, d. Düsseldorf 2007

PREBEN FABRICIUS

b. 1931, d. 1984

A pair of oak foldable easy chairs. Adjustable back with armrests of patinated natural leather straps. Seat, back and headrest upholstered with canvas. These examples made circa 1960s by cabinetmaker Poul Bachmann. (2)
Presented at the Copenhagen Cabinetmakers' Guild Exhibition in 1963.

Literature: Grete Jalk [ed.]: "40 Years of Danish Furniture Design", vol. 4, ill. and mentioned pp. 222-223.

DKK 40,000-50,000 / € 5,400-6,700

969

JOSEF FRANK

b. Baden bei Wien 1885, d. Stockholm 1967

Coffee table with light marble top on a base with slightly tapering brass legs. This example manufactured circa 1950s by Svenskt Tenn. H. 40 cm. W. 51 cm. L. 91 cm. *DKK 20,000 / € 2,700*



969

970

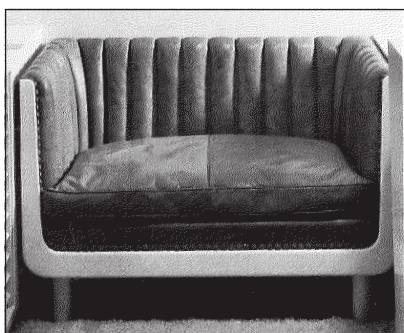
JOSEF FRANK

b. Baden bei Wien 1885, d. Stockholm 1967

"Nationalmuseiskåbet". Freestanding cabinet of amboyna burl veneer, mahogany structure and birch. Front with 19 asymmetrical drawers with original brass handles. Model 881. Designed 1938 for the Academic School of Arts, Stockholm. Made by Svenskt Tenn. H. 120 cm. W. 90 cm. D. 45 cm. *DKK 100,000-125,000 / € 13,500-17,000*



970



971

VILHELM LAURITZEN

b. Slagelse 1894, d. Gentofte 1984

Freestanding 2,5-seater sofa with round legs and front of white lacquered wood. Seat, sides and back later upholstered with gold embroidered fabric fitted with edgings. This example made by cabinet-maker Jacob Kjær 1930s. L. 148 cm.

Literature: Lisbet Balslev Jørgensen, Jørgen Sestoft and Morten Lund: "Vilhelm Lauritzen - a modern architect". A two-seater variant from 1934 is described and ill. p. 50. DKK 40,000-50,000 / € 5,400-6,700



971

972

VILHELM LAURITZEN

b. Slagelse 1894, d. Gentofte 1984

FRITS SCHLEGEL

b. Frederiksberg 1896, d. Ordrup 1965

Rare white lacquered table lamp with cone-shaped shade. Mounted with push button switch. Designed 1928. This example manufactured 1940s for Fritzsche's Glashandel. Height adjustable 46 cm. - 58 cm.

DKK 30,000-40,000 / € 4,050-5,400



972



973



973



973

973 ^{CD}

FRITS SCHLEGEL

b. Frederiksberg 1896, d. Ordrup 1965

A unique Cuban mahogany dining room suite. Comprising an oval, two-pillar dining table on octagonal legs, extension and six extra leaves, one of which "half" size. A set of 14 matching chairs. Seat and back upholstered with red leather, fitted with brass studs. Sideboard with three doors and three drawers in front, inside with cutlery storage. Top with brown leather. Serving trolley with brass fittings and castors, front with two drawers. Top and shelf covered with brown leather. Made to order in 1931. Table: H. 73,5 cm. W. 110 cm. L. 170./491 cm. Sideboard: H. 85 cm. L. 158 cm. (23)

Provenance: Professor Mr. Oscar Alfred Borum, hence by descent in the family.

Due to the friendship between Borum and Schlegel, the latter designed a town house for his friend Borum at Sundvænget 18 in Hellerup, Copenhagen. Several unique pieces of furniture were designed specifically for this house, amongst them this present dining room suite. The house with its interior was completed in 1931. DKK 120,000-150,000 / € 16,000-20,000



973



973



973





974

974
ORREFORS

A pair of chandeliers with brass frame with lily-shapes. Large bowl-shaped frosted glass shade, eight sockets and four glass "leaves". Stem with glass rosettes. These examples manufactured 1940s by Orrefors, Sweden. H. 88 cm. Diam. 68 cm. (2)
Provenance: Made to a managing director's villa, Fagersta Bruk in Sweden.

DKK 100,000-150,000 / € 13,500-20,000





975

975
BARBRO NILSSON

b. Malmö 1899, d. Höganäs 1983

"Snäckorna/The shells". Handwoven wool carpet in "rölakan" flat weave technique. Blue base with polychrome pattern. Designed 1943. Signed BN and AB MMF. Made by AB Märta Måås-Fjetterström. L. 246 cm. W. 190 cm. DKK 100,000 / € 13,500





976



976
TOM WOLFENSTEIN

Sweden. 20th century.

Console table with solid pine frame. Top of red and grey marble. This example made circa 1940. H. 74 cm. W. 66 cm. L. 112 cm.

DKK 150,000 / € 20,000



977



978

977

HELGE HAMNERT

b. Hammarby 1928, d. Høgsby 2014

Small and large handwoven wool "rölakan" carpets with geometric pattern in blue, grey, red and yellow shades. Signed HH. Made 1958. Large carpet: L. 247 cm. W. 170 cm. Small carpet: L. 109 cm. W. 65 cm. (2)

DKK 30,000 / € 4,050

978

DANISH FURNITURE DESIGN

Armchair with teak frame, seat and back of bamboo. Loose cushion upholstered with reversible cushion fitted with buttons. This example manufactured circa 1950s.

DKK 10,000-20,000 / € 1,350-2,700

979

ACTON SCHUBELL

Denmark 20th Century

IB MADSEN

Denmark 20th Century.

A pair of nut wood easy chairs. Seat, back and loose seat cushion upholstered with sheepskin. These examples manufactured ca. 1950s by Schubell & Madsen. (2)

DKK 40,000-50,000 / € 5,400-6,700



979



980 
NIELS KOEFOED

Denmark. 20th century.

"Eva". A set of ten Brazilian rosewood chairs. Seat upholstered with natural leather. These examples manufactured 1970s by Koefoed's Furniture, Hornslet. (10)

Literature: Catalogue from Koefoed's Furniture 1966, ill. p. 10.

DKK 25,000-30,000 / € 3,350-4,050

981
HANS OLSEN

b. Denmark 1919, d. s.p. 1992

Freestanding two seater sofa with tapering teak legs. Sides, seat and back upholstered with grey wool. Loose seat cushion upholstered with black wool. This example manufactured circa 1950s by De Ster, Holland. L. 135 cm.

DKK 20,000-25,000 / € 2,700-3,350

982 ^{CD}
JUDITH JOHANSSON

b. Trollhättan 1916, d. Tenerife 1993

Handwoven wool carpet in "rölakan" flat weave technique with geometric pattern in blue and violet shades. Signed JJ.

L. 206 cm. W. 138 cm. *DKK 12,000-15,000 / € 1,600-2,000*



981



982

Do You Know Your PH Value?

This year it is 50 years since the Danish social critic, revue writer, architect and "light maker" Poul Henningsen, better known by his initials PH, died. He was a beacon within Danish design during the first half of the 1900s, and we celebrate his work at this auction with a selection of some of his more rare lamps.

Initial Fame

In 1919, PH set up his own drawing office, and from here he ran a versatile architectural business. During the first 4-5 years he partnered with architect Kay Fisker, before he began his significant collaboration with the lighting manufacturer Louis Poulsen & Co, which led to the creation of the glare-free PH-lamp. The lamp received the gold medal at the World's Fair in Paris in 1925 – an event that garnered PH considerable fame, and led to the development of several lamps based on the same lighting principles. Today, these early examples of his work are considered very rare and valuable collectables.

"They Bind Our Hands and Mouth"

As a social critic PH was almost always in opposition, and with his involvement in the publication of the magazine "Kritisk-Revy" ("Critical Revue") and as a revue writer PH left a solid mark on the collective Danish consciousness. In 1940, he wrote the song "Man binder os på mund og hånd" (They Bind Our Hands and Mouth) for Kjeld Abell's revue "Dyveke". In this song PH presents a sharp criticism of the German censorship during the occupation. Due to his pronounced opposition, PH was added to the Nazis' black book, and consequently in 1943 he had to flee to Sweden. The escape was carried out in a small rowing boat across Øresund together with the architect Arne Jacobsen. The event leaves us with a powerful image – two of the greatest Danish architects of the 20th century tied together by destiny in a small boat rowing across the choppy waters of Øresund. Much would have been lost if they had not made it to Sweden!

Functionalism in Design and Philosophy

As many other Danish architects at the time, PH welcomed the new ideas from the rest of Europe. He supported the maxims of functionalism "Form follows function" and "Less is more" that were born following the First World War, when the war experience manifested itself among European architects as a desire to reform society. PH was thus preoccupied with creating objects that matched a modern way of life. "Kritisk Revy" became an indispensable medium for the discussion of the fast growing international modernism, but the focus on function was the underlying principle of all of PH's designs.

The Functional Body

As an advocate of functionalism PH was uncompromising. When he was diagnosed with Parkinson's disease, he donated his body to science. Today, his preserved torso is part of the specimen collection at the Faculty of Health and Medical Sciences in Copenhagen, where medical students are being taught anatomy. PH certainly followed through on his beliefs!



983

983
POUL HENNINGSEN

b. Ordrup 1894, d. Hillerød 1967

"PH-3/2". Table lamp with browned brass frame stamped "Pat Appl.". Original amber-coloured glass shades. This example manufactured 1927-1928 by Louis Poulsen. H. 44 cm.

DKK 50,000-75,000 / € 6,700-10,000





984

984

POUL HENNINGSEN

b. Ordrup 1894, d. Hillerød 1967

"PH-Anchor". Four-branch chandelier with patinated nickel-plated frame and socket houses stamped "Patented". Mounted with 3/2 red/frosted glass shades. This example manufactured 1928-1936 by Louis Poulsen. H. 85 cm. Diam. 80 cm.

Literature: "Light Years Ahead", ill. and referred to pp. 190 - 191. DKK 100,000 / € 13,500

PH lampen

Indregistreret Varemarke



PRISLISTE PH Nr. 5
AUGUST 1927

Patentanmeldt og mønsterbeskyttet
i alle Kulturstater



LOUIS POULSEN & CO.

NYHAVN 11 · KØBENHAVN K.

CENTRAL 144

TLGR. ELPECO

985

POUL HENNINGSEN

b. Ordrup 1894, d. Hillerød 1967

"PH-5/3". Rare floor lamp with red/bronze copper shades, browned brass stand and socket marked "Pat Appl.". Circular base mounted on six orbs. This example manufactured 1926-1928 by Louis Poulsen. Height adjustable 105 - 170 cm.

Provenance: Acquired by current owner's grandfather in the late 1920s. Hence by descent in the family.

Literature: "Light Years Ahead", described and ill. p. 152.

Literature: "Louis Poulsen: Pricelist PH no. 5, August 1927, described and ill. p. 33-34

DKK 250,000-300,000 / € 33,500-40,500



PH STANDERLAMPEN

Fodpladen, der hviler paa 6 Kugler, er udført af sortlakeret Støbejern.

Det faste og det forskydelige Rør er udført af Messing.

PH Standerlampen leveres normalt i to Modeller, svarende til PH Bordlamper Model 4/3 og 5/3.

Lampen er indstillelig i Højden, normalt fra 115 cm til 150 cm, men kan efter Ønske leveres i andre Maal (ved Opgivelse af Maksimalmaalet H).

PH Standerlampen kan endvidere leveres i Specialudførelse, Model 6/3, dog kun med Metalskærme.

PH Standerlampen leveres i Udførelse P, patineret, og BN, blanktforniklet, komplet monteret med 3 m Ledning og Stikprop.

Ved Bestilling anføres det tilsvarende No. for **PH** Bordlampen, dog erstattes det første Tal af Tallet 6 f. Eks.

PH Standerlampe No. 67053 P.

PH Standerlampen leveres ikke med Afbryder i Foden.

Priser se næste Side.

33



985



986

986

POUL HENNINGSEN

b. Ordrup 1894, d. Hillerød 1967

"PH-Blackout Pendant". Very rare pendant with five patinated, red lacquered horizontal metal shades. This example manufactured 1941 for Tivoli, Copenhagen by Louis Poulsen. Diam. 52 cm.

Literature: "Light Years Ahead", ill. and mentioned pp. 255-257. DKK 40,000-50,000 / € 5,400-6,700



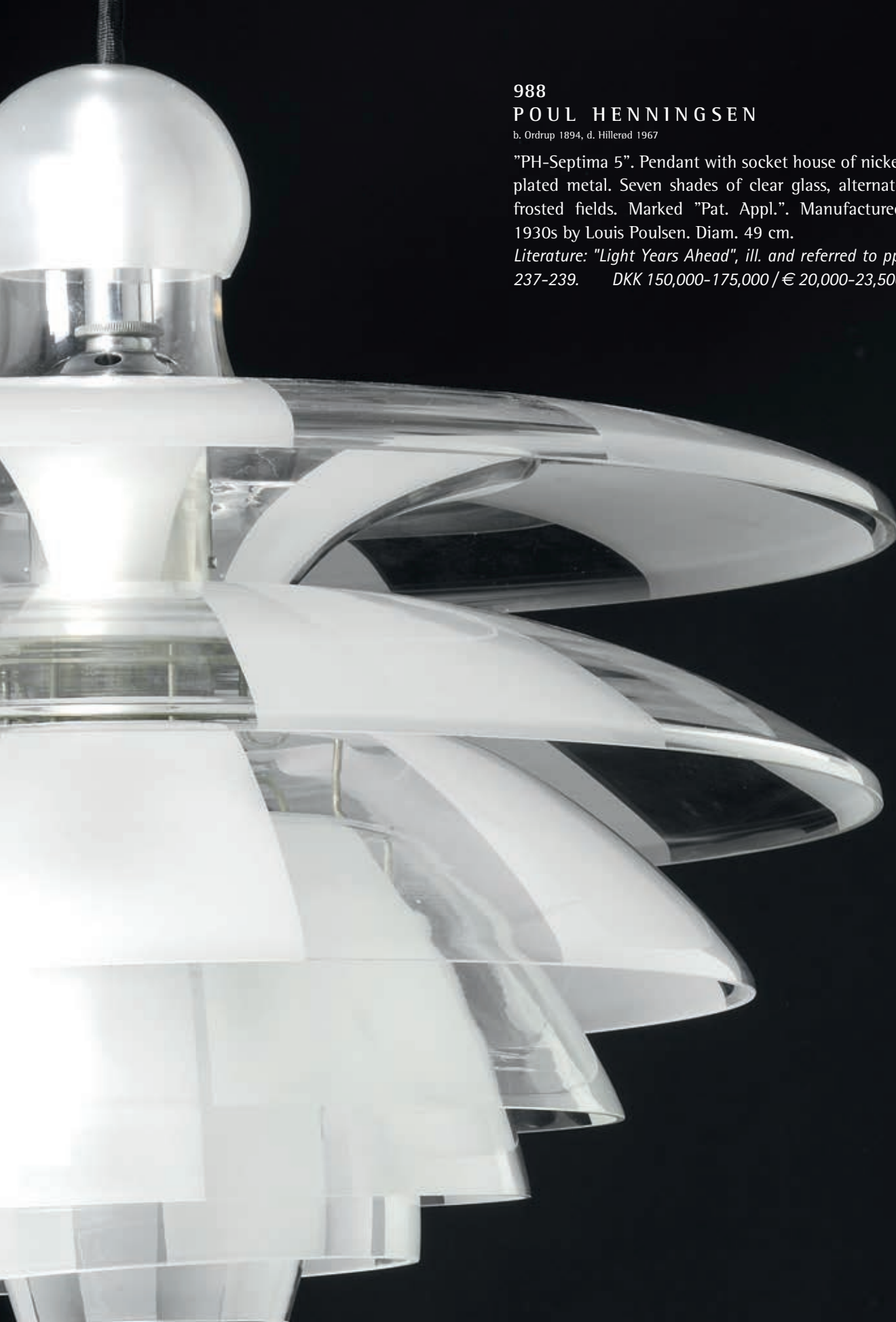
987

987

POUL HENNINGSEN

b. Ordrup 1894, d. Hillerød 1967

"PH-5/3". Pendant with brass bayonet socket house with red/bronze zinc shades. Adjustable height. This example manufactured 1950s by Louis Poulsen. Diam. 50 cm. DKK 25,000-30,000 / € 3,350-4,050



988

POUL HENNINGSEN

b. Ordrup 1894, d. Hillerød 1967

"PH-Septima 5". Pendant with socket house of nickel plated metal. Seven shades of clear glass, alternate frosted fields. Marked "Pat. Appl.". Manufactured 1930s by Louis Poulsen. Diam. 49 cm.

Literature: "Light Years Ahead", ill. and referred to pp. 237-239. DKK 150,000-175,000 / € 20,000-23,500



988



989

989

POUL HENNINGSEN

b. Ordrup 1894, d. Hillerød 1967

"PH-3/2". Table lamp with browned brass stand and socket house marked "Pat Appl.". Original green/bronze copper top- and bottom shade. Middle shade is missing. This example manufactured 1927-1928 by Louis Poulsen. H. 41 cm.

Middle shade is missing.

Early variant without switch house.

DKK 30,000-40,000 / € 4,050-5,400



990

990
POUL HENNINGSEN

b. Ordrup 1894, d. Hillerød 1967

"PH-2/1 Cascade". Two-level browned brass, nine-branch chandelier. Brown bakelite socket houses with amber coloured glass shades. This example manufactured 1933-1940 by Louis Poulsen. Diam. 70 cm.

DKK 25,000 / € 3,350



991



991

POUL HENNINGSEN

b. Ordrup 1894, d. Hillerød 1967

"PH Grand Piano". Seven octaves with frame of black lacquered wood and chromed steel. Edge covered with brown leather. Curving legs of polished aluminum. 3 mm perspex cover and sheet holder, divided with stainless steel panels. This example manufactured 2011 by Blüthner, Germany. L. 180 cm. W. 160 cm.

More recent version of the PH Grand Piano that was designed in 1931.

DKK 200,000-250,000 / € 27,000-33,500



992

992

JOHN MORTENSEN

b. Copenhagen 1938

Freestanding teak sideboard with chromed metal legs. Opening top with access to storage compartment and drawer. Front with flip-down door, interior with numerous pull-out trays. Designed 1961. This example manufactured circa 1960s by Sibast. H. 73 cm. W. 52 cm. L. 135 cm.

DKK 20,000 / € 2,700





993
POUL KJÆRHOLM

b. Østervrå 1929, d. Hillerød 1980

"PK 31/1". Easy chair with chromed steel frame. Sides, back and loose cushions upholstered with patinated brown leather. Designed 1958. This example manufactured 1970s by E. Kold Christensen, stamped by maker.

DKK 15,000-20,000 / € 2,000-2,700

994
POUL KJÆRHOLM

b. Østervrå 1929, d. Hillerød 1980

"PK 31/3". Freestanding three seater sofa with chromed steel frame. Sides, back and loose cushions upholstered with patinated brown leather. Designed 1958. This example manufactured 1970s by E. Kold Christensen, stamped by maker. L. 198 cm.

DKK 50,000 / € 6,700





995

995

ARNE JACOBSEN

b. Copenhagen 1902, d. s.p. 1971

"City Hall Lamp". A brass pendant, inside of shade white laquered. Centre with pear-shaped glass. This example manufactured 1940s. H. 24. Diam. 38/48 cm.

Provenance: Aarhus City Hall, 1940s.

Literature: Planmøbel catalogue, circa 1943.

Literature: Jens Lindhe [ed.], "Aarhus City Hall", Arkitektens Forlag 1991. DKK 25,000-30,000 / € 3,350-4,050

996

BARBRO NILSSON

b. Malmö 1899, d. Höganäs 1983

"Tånga brun och grön/Green and brown seaweed". Handwoven wool carpet in "rölakan" flat weave technique. Pattern in green, brown and blue shades. Signed BN and AB MMF. Made by AB Märta Måås-Fjetterström. L. 285 cm. W. 190 cm. DKK 100,000 / € 13,500



996



997

ARNE JACOBSEN

b. Copenhagen 1902, d. s.p. 1971

A pair of wall lamps with frosted glass shade on twin bracket brass frame. Inside with three bakelite sockets. These examples manufactured circa 1940s by Louis Poulsen. H. 41 cm. Diam 30 cm. (2)

Designed for Gentofte Stadium and K.F.U.M., 1936-1943.

Literature: Felix Solaguren-Beascoa: "Jacobsen 2", ill. pp. 56-57. DKK 30,000-40,000 / € 4,050-5,400

998

ARNE JACOBSEN

b. Copenhagen 1902, d. s.p. 1971

"The Egg". Early easy chair with matching footstool. Profiled aluminum frame. Upholstered with original, patinated black leather. Model 3315 and 3127. Manufactured 1958 and white paint mark by Fritz Hansen. (2)

Provenance: The SAS Royal Hotel, Copenhagen 1958-1960. DKK 80,000-100,000 / € 11,000-13,500



998



999

999 ©
BODIL KJÆR

b. Hatting 1932

A freestanding Brazilian rosewood desk with two matching drawer sections on castors. Chromed steel frame and castors. Desk's rail with four integrated drawers. Drawer sections each with three drawers. Designed 1959. These examples manufactured approx. 1960s by E. Pedersen & Søn. Desk: H. 73 cm. W. 91 cm. L. 184 cm. Drawer sections: H. 49 cm. D. 61 cm. W. 44 cm.
(3) *DKK 50,000-60,000 / € 6,700-8,050*



999





1000

HANS J. WEGNER

b. Tønder 1914, d. Gentofte 2007

"JH 701". A set of eight armchairs with chromed steel frame, wengé back with inlays. Seat upholstered with brown leather. Designed 1965. These examples made circa 1960s by cabinet-maker Johannes Hansen. With maker's label. (8)

The model was presented at The Copenhagen Cabinetmakers 39th Guild Exhibition at Designmuseum Danmark in 1965.

Literature: Grete Jalk [ed.]: "40 Years of Danish Furniture Design", 1987, vol. 4, ill. pp. 300-303.

Literature: Noritsugu Oda: "Danish Chairs", 1999, ill. p. 120.

DKK 100,000 / € 13,500



1000

1001 ●

SVEND LANGKILDE

Denmark 20th century

Brazilian rosewood cabinet and chest. Cabinet's front with two doors, interior with trays and shelves. Chest's front with four drawers. Made by Langkilde Møbler for Illums Bolighus with metal plaque. H. 66 cm. W. 100 cm. D. 47 cm. (2) *DKK 25,000 / € 3,350*



1001

1002 ●

SVEND LANGKILDE

Denmark 20th century

Brazilian rosewood cabinet and chest of drawers. Cabinet's front with two doors, interior with trays and shelves. Chest's front with four drawers. These examples made by Langkilde Møbler for Illums Bolighus with metal plaque. H. 66 cm. W. 100 cm. D. 47 cm. (2) *DKK 25,000 / € 3,350*



1002

1003

POUL KJÆRHOLM

b. Østervrå 1929, d. Hillerød 1980

"PK 31". A pair of easy chairs with chromed steel frame. Sides, back and loose cushions in seat and back upholstered with original brown leather. Designed 1958. These examples manufactured circa 1970s by E. Kold Christensen, stamped by maker. (2)

DKK 25,000 / € 3,350



1003



1004

POUL KJÆRHOLM

b. Østervrå 1929, d. Hillerød 1980

"PK 31". A pair of easy chairs with chromed steel frame. Sides, back and loose cushions in seat and back upholstered with original brown leather. Designed 1958. These examples manufactured circa 1970s by E. Kold Christensen, stamped by maker. (2)

DKK 25,000 / € 3,350



1004





1005



1005



1006

1005
POUL KJÆRHOLM

b. Østervrå 1929, d. Hillerød 1980

"PK 31". Freestanding two seater sofa and easy chair with chromed steel frame. Sides, back and loose cushions in seat and back upholstered with original brown leather. Designed 1958. These examples manufactured approx. 1970s by E. Kold Christensen, stamped by maker. Sofa: L. 138 cm. (2)

DKK 30,000 / € 4,050

1006
POUL KJÆRHOLM

b. Østervrå 1929, d. Hillerød 1980

"PK 31/2". Freestanding two seater sofa with chromed steel frame. Sides, back and loose cushions in seat and back upholstered with original brown leather. Designed 1958. This example manufactured circa 1970s by E. Kold Christensen, stamped by maker. L. 138 cm.

DKK 20,000 / € 2,700

1007

ERIK KROGH

b. 1942

Chaiselongue with stainless steel frame, partly red lacquered. Foldable and adjustable wood seat and back upholstered with black canvas. Matching headrest. Mountable grey lacquered tray included. This example manufactured circa 1982 by cabinetmaker Johannes Hansen. L. 138 cm.

DKK 20,000-25,000 / € 2,700-3,350



1007

1008

POUL KJÆRHOLM

b. Østervrå 1929, d. Hillerød 1980

"PK 9". A set of four chairs on chromed steel frame. Seat and back upholstered with original red leather. Designed 1960. These examples manufactured 1990 by Fritz Hansen, with maker's paper label. (4)

DKK 50,000-60,000 / € 6,700-8,050



1008

1009

SPANISH DESIGN

"Marbella". A set of 12 dark polished beech brutalist bar stools. Three legged frame, saddle-shaped seat and "handles". Black lacquered metal foot rest. These examples manufactured circa 1970s by Confonorm, Spain. (12)

DKK 20,000-25,000 / € 2,700-3,350

1010

BERIT KOENIG

Sweden 20th century

Röläkan carpet of wool with geometric pattern in brown, red and orange shades. Signed BK and SH (Svensk Hemslöjd). L. 253 cm. W. 202 cm.

DKK 25,000 / € 3,350



1009

1011

IB KOFOD-LARSEN

b. 1921, d. 2003

A pair of high-back adjustable easy chairs and one matching foot stool of teak. Seat, back and head-rests upholstered with pony hide. These examples manufactured circa 1950s by Selig. (3)

DKK 30,000 / € 4,050



1010



1011

1012

SWEDISH DESIGN

A set of three sculpted trapeze-shaped wall mirrors with rosewood frame. These examples manufactured circa 1950s. H. 82 cm. W. 52 cm. (3)

DKK 15,000-20,000 / € 2,000-2,700



1012

1013

HANS J. WEGNER

b. Tønder 1914, d. Gentofte 2007

"RY 26". A Brazilian rosewood sideboard. Front with two sliding doors with circular brass inlays. Interior with shelves and drawers. Designed 1959. This example manufactured circa 1960s by Ry Møbler. H. 79 cm. W. 200 cm. D. 49 cm.

Literatura: "Mobilia", 1959

DKK 25,000-30,000 / € 3,350-4,050



1013

1014

SWEDISH DESIGN

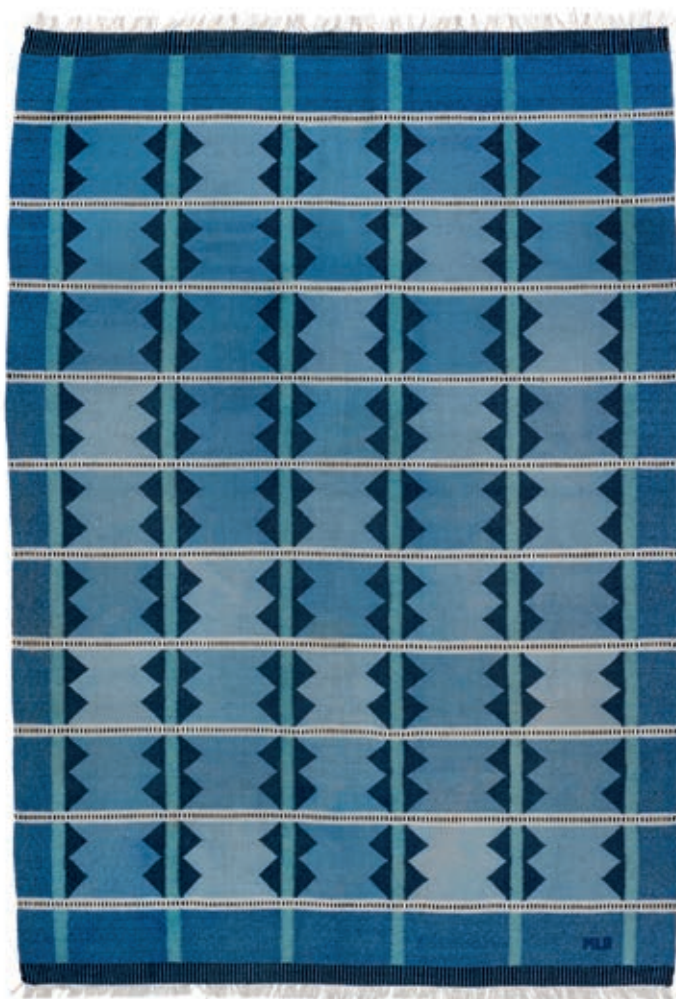
Handwoven wool carpet in "rölakan" flat weave technique with geometric pattern in blue shades with black and white stripes. Made 1950's. Signed MLB. L. 280 cm. W. 198 cm. *DKK 20,000 / € 2,700*

1015

KAI KRISTIANSEN

b. 1929, Denmark

A set of eight teak chairs with tilting back. Seat and back upholstered with black leather. Model 42. These examples manufactured circa 1960s by Schou Andersen Furniture. (8) *DKK 20,000 / € 2,700*



1014



1015



1016

1016

KAI LYNGFELDT LARSEN

b. 1919, d. 1976

A pair of oak easy chairs. Seat and back of black leather. Model 506. Designed 1965. These examples manufactured circa 1970 by Søborg Møbler. (2)

DKK 20,000 / € 2,700

1017

BØRGE MOGENSEN

b. Aalborg 1914, d. Gentofte 1972

"Daybed". Solid oak base with loose cushions in seat, back and wall mountable head rest cushions upholstered with dark blue chequered wool. This example manufactured ca. 1960s by Fredericia Stolefabrik. L. 190 cm. W. 140 cm. H. 36/80 cm.

DKK 25,000 / € 3,350



1017



1018

1018

TOVE KINDT-LARSEN

b. 1906, d. 1994

EDVARD KINDT-LARSEN

b. Frederiksberg 1901, d. Gentofte 1982

Blue painted cabinet with oak frame. Front with six drawers and two doors, interior with adjustable shelves. Handles of brass. This example manufactured circa 1960s by Seffle Möbelfabrik, Säffle Sweden. H. 103 cm. W. 150 cm. D. 47 cm.

DKK 40,000-60,000 / € 5,400-8,050



1019

1019

HANS J. WEGNER

b. Tønder 1914, d. Gentofte 2007

A set of six mahogany chairs. Comprising a pair of armchairs and four side chairs. Seats upholstered with beige fabric. Designed 1942. These examples made circa 1950 by cabinetmaker Johannes Hansen, with maker's paper label. (6)

This model was presented at The Copenhagen Cabinetmakers' Guild Exhibition at Designmuseum Danmark in 1942.

Literature: Grete Jalk [ed.]: "40 Years of Danish Furniture Design", vol. 2, ill. pp. 168-169.

DKK 40,000-50,000 / € 5,400-6,700



1020



1021

1020

ORLA MØLGAARD-NIELSEN

b. Ålborg 1907, d. Hellerup 1993

PETER HVIDT

b. Copenhagen 1916, d. s.p. 1986

Circular mahogany coffee/salon table with slightly slanted legs. Designed 1948. This example made circa 1960s by cabinetmaker Gustav Bertelsen. H. 64 cm. Diam. 109 cm.

Literature: Grete Jalk [ed.]: "40 years of Danish Furniture Design", vol. 3, ill. and referred to p. 45.

DKK 15,000-20,000 / € 2,000-2,700

1021

FINN JUHL

b. Frederiksberg 1912, d. Ordrup 1989

Freestanding 2½ seater sofa on round, tapering beech legs. Sides, seat and back upholstered with olive-green wool, back fitted with buttons. This example manufactured circa 1960s by Bovirke.

L. 170 cm. DKK 30,000-40,000 / € 4,050-5,400



1022

1022

ANNA - GRETA SJÖQVIST

Sweden. 20th century.

Handwoven wool carpet in "rölakan" flat weave technique with geometric pattern in blue, beige and redish brown shades. Signed AGS. L. 314 cm. W. 210 cm.

DKK 50,000 / € 6,700

1023

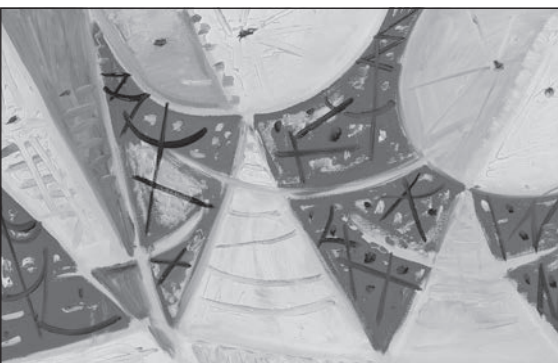
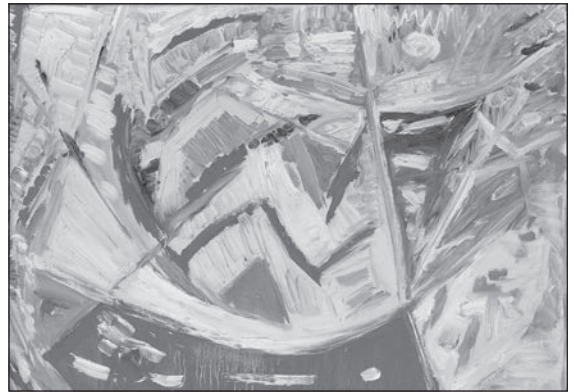
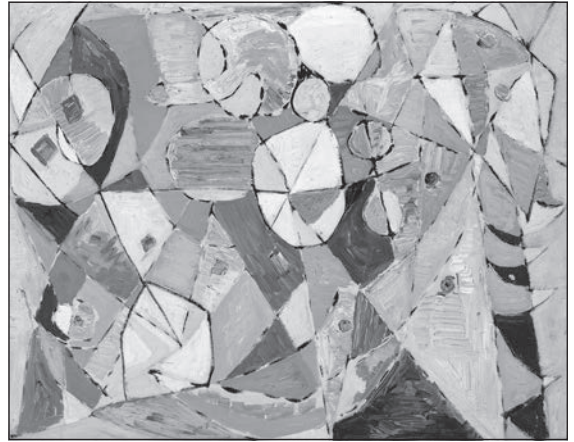
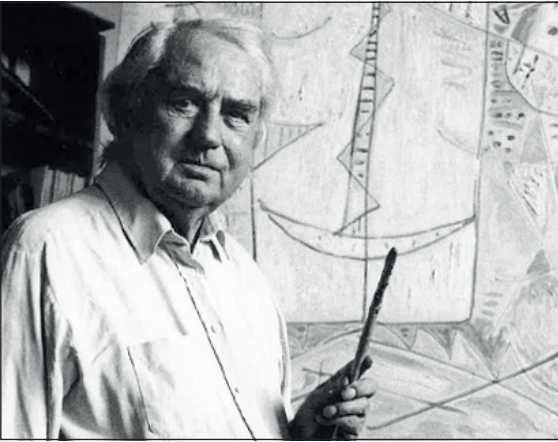
FINN JUHL

b. Frederiksberg 1912, d. Ordrup 1989

"Fireplace Chair". A pair of teak easy chairs, cross stretchers underneath seat. Seat, back and loose seat cushion upholstered with dark blue wool fabric. Model BO 59. Designed 1946. These examples manufactured circa 1960s by Bovirke. (2) *DKK 50,000 / € 6,700*



1023



1024 ©
FINN JUHL

b. Frederiksberg 1912, d. Ordrup 1989

"FJ 45". A Brazilian rosewood easy chair. Seat, back and loose seat cushion upholstered with original, blue wool fabric. Designed 1945. This example made ca. 1970s by cabinetmaker Niels Vodder, stamped by maker.

Provenance: The artist Egill Jacobsen, hence by descent in the family. Finn Juhl was a personal friend of the artist.

DKK 125,000-150,000 / € 17,000-20,000



1024



1025

1025

FINN JUHL

b. Frederiksberg 1912, d. Ordrup 1989

"Chieftain Chair". A teak easy chair. Seat, armrests and back upholstered with black leather, back fitted with three buttons. Designed 1949. This example made early 1960s by cabinetmaker Niels Vodder, stamped by maker.

Provenance: Acquired by present owner's father in the early 1960s. *DKK 500,000 / € 67,000*





1026

1026
OTTO SCHULZ

Sweden. 20th century.

Nutwood cabinet. Front with three doors decorated with French lilies in marquetry. Interior with birch drawers and shelves. This example manufactured circa 1950s. H. 145 cm. D. 42 cm. W. 166 cm.

DKK 20,000 / € 2,700



1027

1027
DAVID BLOMBERG

b. Linde 1874, d. Stocksund 1962

Lounge table with six pillar legs, orb "shoes". Curved top rim of black lacquered wood. Top with oak marquetry. Carved base base of patinated oak. Made by NK (Nordiska Kompaniet), Sweden, with metal plaque. H. 65 cm. Diam. 93 cm.

DKK 25,000 / € 3,350



1028

KAY FISKER

b. Frederiksberg 1893, d. København 1965

A Cuban mahogany dressing set. Comprising a rectangular mirror with a pair of side tables and a matching stool. Mirror with foldable sides. Tables each with four drawers in front. Sculpturally carved legs, seat upholstered with black horsehair. These examples made early 1920s probably by cabinetmaker V. Bloch Jørgensen. Mirror: H. 118 cm. W. 48./110 cm. Tables: H. 74 cm. W. 32 cm. D. 34 cm. Stool: seat H. 42 cm. (4)

Provenance: Acquired by current owner's grandfather who was a friend and colleague of Kay Fisker. DKK 30,000 / € 4,050



1029

KAARE KLINT

b. Frederiksberg 1888, d. Copenhagen 1954

"The Red Chair". A set of nine large Cuban mahogany chairs with profiled frames. Seat and back upholstered with original, patinated Niger leather, fitted with brass nails. These examples made circa 1930s by Rud. Rasmussen Cabinetmakers, Copenhagen, eight with paper label. (9)

7 chairs with KK label # 14620

1 chair with KK label # 14801

1 chair without a label DKK 50,000-60,000 / € 6,700-8,050



1029

1030

FRITS HENNINGSEN

b. 1889, d. 1965

Two seater high-back sofa with oak legs. Sides, seat, back and integrated armrests upholstered with brown leather. This example made circa 1950s by cabinetmaker Frits Henningsen. L. 150 cm.

The model was presented at The Copenhagen Cabinetmakers' Guild Exhibition at Designmuseum Danmark in 1936.

Literature: Grete Jalk [ed.]: "40 Years of Danish Furniture Design", vol. 1, ill. p. 245. DKK 75,000-100,000 / € 10,000-13,500

1031

FRITS HENNINGSEN

b. 1889, d. 1965

Armchair with patinated elm frame. Seat, back and armrests upholstered with original patinated Niger leather fitted with brass studs. Designed 1933. This example made 1930-1940s by cabinetmaker Frits Henninsen.

The model was presented at The Copenhagen Cabinetmakers' Guild Exhibition at Designmuseum Danmark, 1933.

Literature: Grete Jalk [ed.]: "40 Years of Danish Furniture Design", vol. 1, ill. pp. 156-157. DKK 30,000-40,000 / € 4,050-5,400



1031



1030





1032

1032

KAARE KLINT

b. Frederiksberg 1888, d. Copenhagen 1954

Freestanding three seater sofa on eight-legged mahogany cross-frame. Sides, seat and back upholstered with reddish brown leather. Model 4118. Designed 1930. This example made 1970s by Rud. Rasmussen Cabinetmakers. L. 200 cm.

Copy of original receipt from Rud. Rasmussen Cabinet-makers dated 1978 is included.

Literature: Gorm Harkær, Klintiana: "Kaare Klint", vol. 2, ill. p. 93. DKK 50,000-60,000 / € 6,700-8,050



1033
KAARE KLINT

b. Frederiksberg 1888, d. Copenhagen 1954

Circular nut wood coffee table with underlying square shelf. Model 6687. Designed 1930. This example made 1930s by Rud. Rasmussen Cabinetmakers, with maker's paper label. H. 52 cm. Diam. 80 cm.

KK label # 12833.

Literature: Gorm Harkær, Klintiana: "Kaare Klint", vol 2, ill. p. 55. DKK 20,000-25,000 / € 2,700-3,350



1033



1034

KAARE KLINT

b. Frederiksberg 1888, d. Copenhagen 1954

A rare solid pine drawing file, front with 21 drawers. This example made 1942 by Rud. Rasmussen, cabinetmakers, Copenhagen. H. 138 cm. W. 101,5 cm. D. 72 cm.

Made by special order for the Royal Academy to be used by the students and professors. Marked with the academy's logo.

DKK 150,000 / € 20,000



1034



1035



1035

1035

TOVE KINDT-LARSEN

b. 1906, d. 1994

EDVARD KINDT-LARSEN

b. Frederiksberg 1901, d. Gentofte 1982

Bedroom interior of maple. Comprising two wardrobes, a pair of beds and a dressing table with a matching chair. Wardrobes on plinth, each front with three doors, interior with hanger rail, shelves and drawers. Bed fences with two-piece woven cane, blue lacquered lower part. Dressing table on brass castors, top with side-mounted hinge with white lacquered storage compartment and movable box with light blue paint. Top with folding mirror, below this a storage compartment with light blue paint. Matching chair with original upholstery on seat and back, sides and rear side of backrest with blue fabric. Front and top upholstered with red, white and blue striped fabric. These examples made 1939 by cabinetmaker Gustav Bertelsen. (6)

Literature: Grete Jalk [ed.]: "40 years of Danish Furniture Design", vol. 2, ill. and described pp. 82-83.

DKK 40,000-50,000 / € 5,400-6,700



1035



1036

1036

WILLIAM WATTING

Denmark. 20th century.

Freestanding 2,5 seater sofa with dark stained beech legs. Seat, curving armrests and back later upholstered with purple wool. Back fitted with buttons. This example manufactured 1950s. L. 185 cm.

Literature: "Bygge og Bo", vol. 2-3, 1951, ill. and referred to p. 32.

DKK 25,000-30,000 / € 3,350-4,050



1037

VIGGO BOESEN

b. Copenhagen 1907, d. 1985

"The Little Petra". Easy chair with beech legs. Seat and back recently upholstered with yellow wool. Designed 1938. This example made circa 1940 by cabinetmaker A. J. Iversen.

Literature: Grete Jalk [ed.]: "40 Years of Danish Furniture Design", vol. 2, ill. p. 51.

Literature: "Møbelhaandværk gennem 25 Aar, A. J. Iversens snedkermestervirksomhed 1916-1941", illustrated.

Provenance: Acquired by current owner's family circa 1940. Hence by descent in the family.

DKK 125,000-150,000 / € 17,000-20,000



1037



1038



1038

ARNE NORELL

b. Kristinehamn 1917, d. Bredestad 1971

"Tummen/The Thumb". A pair of easy chairs with beech legs. Upholstered with artificial leather in two different shades of brown, partly fitted with brass nails. These examples manufactured 1952 by Gösta Westerbergs Möbler, Sweden. (2)

DKK 150,000 / € 20,000





1039

1039
INGEGERD SILOW

b. Stockholm 1916, d. s.p. 2005

Unusual handwoven wool carpet in "rölakan" flat weave technique with polychrome, leaf-like pattern. Signed monogram IS. This example made circa 1960s Sweden. L. 228 cm. W. 168 cm.

DKK 30,000 / € 4,050

1040
INGEGERD SILOW

b. Stockholm 1916, d. s.p. 2005

Unusual handwoven wool carpet in "rölakan" flat weave technique with polychrome, leaf-like pattern. Signed monogram IS. This example made approx. 1960s, Sweden. L. 282 cm. W. 196 cm.

DKK 30,000 / € 4,050



1040

1041

VILHELM LAURITZEN

b. Slagelse 1894, d. Gentofte 1984

A bench with chromed steel tube frame. Seat of solid, lacquered teak with raised back. Designed and made 1936-1937. H. 50 cm. D. 42 cm. L. 111 cm.

The model was designed for Gladsaxe City Hall and also used at the Danish Embassy in Washington DC.

Literature: Lisbeth Balslev Jørgensen a.o.: "Vilhelm Lauritzen - En moderne Arkitekt", 1994, ill. p. 73.

DKK 25,000-40,000 / € 3,350-5,400



1041

1042

VILHELM LAURITZEN

b. Slagelse 1894, d. Gentofte 1984

"Christiansborg". A chandelier with brass frame. Seven branches with shades of opal glass. This example manufactured circa 1960s by Louis Poulsen. Diam. 88 cm.

DKK 20,000 / € 2,700

1043

VILHELM LAURITZEN

b. Slagelse 1894, d. Gentofte 1984

A bench with chromed steel tube frame. Seat of solid, lacquered teak with raised back. Designed and made 1936-1937. H. 50 cm. D. 42 cm. L. 111 cm.

The model was designed for Gladsaxe City Hall and also used at the Danish Embassy in Washington DC.

Literature: Lisbeth Balslev Jørgensen a.o.: "Vilhelm Lauritzen - En moderne Arkitekt", 1994, ill. p. 73.

DKK 25,000-40,000 / € 3,350-5,400



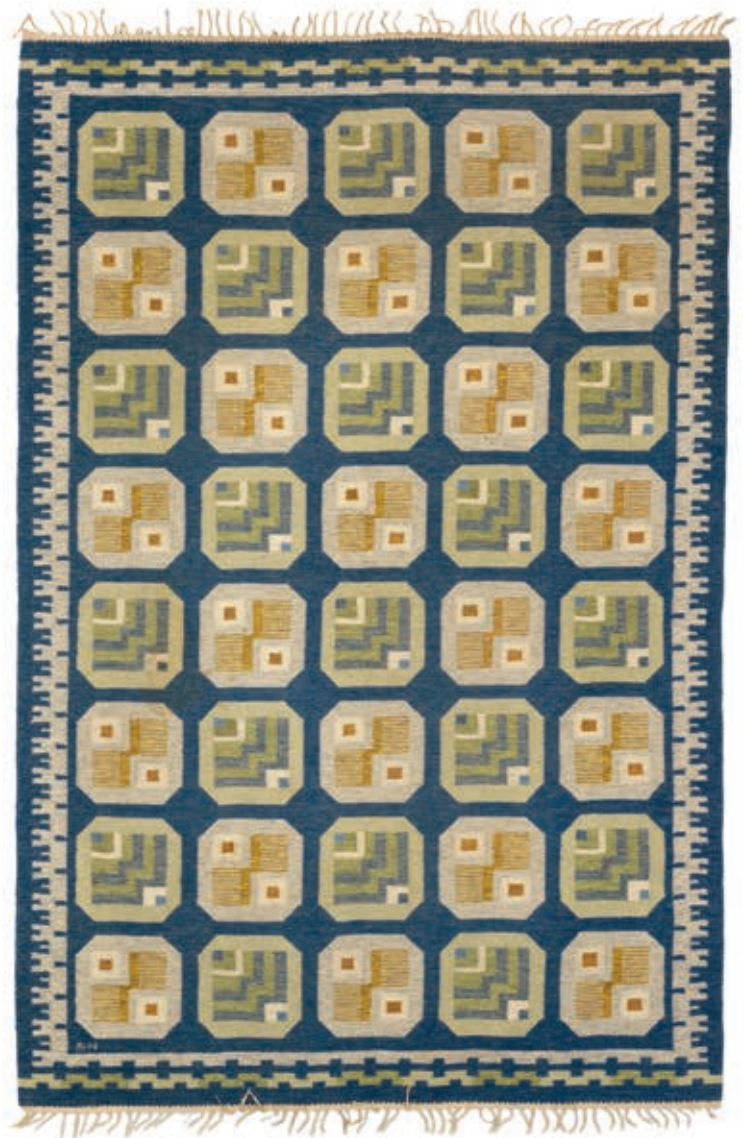
1042



1043



1044



1045

1044

ERNST KÜHN

b. Copenhagen 1890, d. Gentofte 1948

Dining table with beech frame. Top of solid pine with profile along edges. This example made circa 1930s by Fritz Hansen, stamped by maker. H. 74 cm. W. 69 cm. L. 160 cm. *DKK 18,000-20,000 / € 2,400-2,700*

1045

SVEA NORÉN

Sweden. 20th century.

Handwoven wool carpet in "rölakan" flat weave technique with geometric pattern in blue, green, yellow and grey shades. Signed SN. L. 304 cm. W. 200 cm. *DKK 30,000 / € 4,050*

1046

MOGENS VOLTELEN

b. Sørup, Gulborgsund 1908, d. Gentofte 1995

"Københavnerstolen". Easy chair with curving, patinated oak frame. Seat, back and armrests of patinated natural leather, fitted with brass nails. Designed 1936. This example made 1930s by cabinetmaker Niels Vodder, Copenhagen.

Early and rare variant with armrest attached to the front of the backrest. *DKK 25,000 / € 3,350*



1046



1047



1048

1047

NAPOLEONE MARTINUZZI

b. Murano 1892, d. Venice 1977

"Vetro Soffiato". Six-branch blue tinted glass chandelier with suspended drops. Designed 1920-1930. This example manufactured 1930s by Venini, Murano. H. circa 75 cm. Diam. circa 80 cm.

Literature: Anna Venini Diaz de Santillana: "Venini. Catalogue Raisonné 1921-1986". Skira, Torino. 2000. Model ill. and mentioned pp. 68-69 and pp. 194-195.

Literature: Venini Catalogo Blu # 2025, ill. p. 107.

Literature: Identical example in Gardone di Riviera, Il Vittoriale degli Italiani, Prioria, Stanza Cicerin #24.

DKK 30,000-40,000 / € 4,050-5,400



1048

**AXEL EINAR HJORTH,
ATTRIBUTED**

b. Krokek 1888, d. Stockholm 1959

Rectangular solid pine wood dining table with shaker frame, two additional leaves. This example manufactured 1930s - 1940s by Nordiska Kompaniet, Sweden, with metal plaque. H. 75 cm. W. 74 cm. L. 150 cm. L. with leaves 239 cm.

DKK 25,000 / € 3,350

1049

SWEDISH DESIGN

A pair of cylindrical patinated solid pine "barrel chairs" on castors. Seat with reversible cushion upholstered with light grey fabric. Backrest with integrated handle. These examples made circa 1950s.

H. 96. (2)

DKK 20,000 / € 2,700



1050



1050

AXEL EINAR HJORTH

b. Krokek 1888, d. Stockholm 1959

"Korall". Cabinet of black lacquered wood, sycamore and lacquered birch. Front with two doors, interior with shelves and rosewood drawers with ebonite handles. Designed and manufactured 1934 by Nordiska Kompaniet, with metal plaque. H. 151 cm. W. 106 cm. D. 44 cm.

DKK 150,000 / € 20,000

1051

MOGENS KOCH

b. Frederiksberg 1898, d. Copenhagen 1992

Wingback chair with matching foot stool of mahogany. Sides, back and loose cushions upholstered with patinated natural leather fitted with leather covered nails. Designed 1936. These examples made circa 1980 by upholsterer Ivan Schlechter. (2)

A copy of the original receipt from "Den Permanente" 1981 is included.

The model was presented at The Copenhagen Cabinetmakers' Guild Exhibition at Designmuseum Danmark in 1936.

Literature: Grete Jalk [ed.]: "40 Years of Danish Furniture Design", vol. 1, referred to and ill. pp. 252-253.

DKK 40,000-50,000 / € 5,400-6,700



1051



1052

1052
MOGENS KOCH

b. Frederiksberg 1898, d. Copenhagen 1992

A mahogany fireplace suite comprising a freestanding two-seater sofa and a bergere. Sides, back and loose cushions upholstered with patinated natural leather, fitted with leather-covered nails. Designed 1936. These examples made circa 1980 by upholsterer Ivan Schlechter. Sofa: L. 125 cm. (2)

A copy of the original receipt from "Den Permanente" dated 1981 is included.

The models were presented at The Copenhagen Cabinetmakers' Guild Exhibition at Designmuseum Danmark in 1936.

Literature: Grete Jalk [ed.]: "40 Years of Danish Furniture Design", vol. 1, referred to and ill. pp. 252-253.

DKK 50,000-60,000 / € 6,700-8,050



1052



1053



1053
OSCAR NILSSON

Sweden, 20th century

Oak sideboard. Sides and front with four doors, each divided into geometric pattern. This example made circa 1930s by cabinetmaker Jacob Wickman. H. 76 cm. D. 50 cm. L. 204 cm.

DKK 120,000-150,000 / € 16,000-20,000

1054

HANS BERGSTRÖM

b. Karlshamn 1910, d. Åhus 1996

Teak floor lamp with integrated handle. Brass base, adjustable arm and shade. H. 125 cm.

Foot marked "Stads-hotel, Södertälje."

DKK 20,000-25,000 / € 2,700-3,350



1054

1055

ERNST KÜHN, ATTRIBUTED

b. Copenhagen 1890, d. Gentofte 1948

Kidney shaped three legged table with rosewood and mahogany frame. Brass "shoes" and fitting details. Top covered with brown leather and clear glass. H. 51 cm. L. 71 cm. W. 38 cm.

DKK 20,000 / € 2,700



1055



1056

1056
ELIAS SVEDBERG

b. Uppsala 1913, d. Söndrums 1987

Rare freestanding sofa with slightly tapering oak legs. Seat and back upholstered with light blue wool, fitted with buttons. This example manufactured ca. 1940 by Nordiska Kompaniet, Sweden. L. 161 cm. *DKK 50,000-60,000 / € 6,700-8,050*

1057
ALVAR AALTO

b. Kuortane 1898, d. Helsinki 1976

A set of six birch wood armchairs. Seat, back and armrests with woven cane. Model 45. Designed 1946-1947. These examples manufactured circa 1970s by Artek, Finland. (6)

DKK 25,000-30,000 / € 3,350-4,050

1058
DANISH CABINETMAKER

Wall mounted teak cabinet. Front with two sliding doors with cane, flanked with doors and drawer. Inside with maple shelves. Purchased at Illums Bolighus, with plaque. This example manufactured ca. 1950's. H. 60 cm. D. 30 cm. L. 186 cm.

DKK 25,000 / € 3,350

1059
NEA HÅLLFAST

Sweden. 20th century

"Tulpan/Tulip". Handwoven wool carpet in "röläkan" flat weave technique with geometric pattern in shape of tulips in green, blue, brown and grey shades. Signed NH and KH. Made by Klockar-egårdens Hemslojd. L. 244 cm. W. 170 cm.

DKK 20,000 / € 2,700



1057



1058



1059

1060

FINN JUHL

b. Frederiksberg 1912, d. Ordrup 1989

A large solid teak bowl. Stamped Finn Juhl Design,
Kay Bojesen Denmark, Copyright. H. 17 cm. W. 34 cm.

L. 37,3 cm.

DKK 30,000 / € 4,050



1060

1061

FINN JUHL

b. Frederiksberg 1912, d. Ordrup 1989

"The Poet". Freestanding two seater sofa with round, tapering teak legs. Sides, back and loose seat cushion upholstered with dark brown wool. Back fitted with buttons. Designed 1941. This example made 1960 by cabinetmaker Niels Vodder. L. 130 cm.

Literature: Esbjørn Hiort: "Arkitekten Finn Juhl", ill. p. 30.

Literature: "Finn Juhl Memorial Exhibition", ill. p. 127.

DKK 50,000-60,000 / € 6,700-8,050



1061



1062

1062 ©

HELGE VESTERGAARD JENSEN

b. Herning 1917, d. København 1987

Rectangular Brazilian rosewood coffee table on sculptural Y-shaped legs. Designed 1955. This example made early 1960s by cabinetmaker Peder Pedersen. H. 51 cm. L. 150 cm. W. 50 cm.

Literature: Grete Jalk [ed.]: "40 Years of Danish Furniture Design", vol. 3, p. 343 and vol. 4, p. 247.

CITES-certificate valid within the European Union is included. DKK 20,000-25,000 / € 2,700-3,350

1063 ©

FINN JUHL

b. Frederiksberg 1912, d. Ordrup 1989

"FJ 45". A Brazilian rosewood easy chair. Seat, back and loose seat cushion upholstered with ochre yellow wool. Designed 1945. This example made 1960s by cabinetmaker Niels Vodder, stamped by maker.

DKK 125,000-150,000 / € 17,000-20,000



1063



1064

1064

ARNE VODDER

b. 1926, d. 2009

Chaise longue with beech frame. Seat and back with patinated natural leather webbing. This example manufactured 1950s by Bovirke. L. 148 cm.

Literature: The periodical "Møbler", no. 6, 1954, ill. p. 46

DKK 50,000-60,000 / € 6,700-8,050





1065

1065

ANNA-GRETA SJÖQVIST

Sweden. 20th century.

Handwoven wool carpet in "rölakan" flat weave technique with geometric pattern in blue, green, yellow and red shades. Signed AGS. L. 215 cm. W. 140 cm.

DKK 12,000-15,000 / € 1,600-2,000



1066

1066 ©
FINN JUHL

b. Frederiksberg 1912, d. Ordrup 1989

"BO 101". A low Brazilian rosewood table/bench. Anodized steel frame and tall Brazilian rosewood "shoes". Raised brass edges. Designed 1953. This example manufactured 1960s by Bovirke, with metal plaque from retailer Illums Bolighus. H. 40 cm. L. 112 cm. W. 45 cm.

DKK 20,000 / € 2,700



1067

1067 ©
DANISH CABINETMAKER

Brazilian Rosewood sewing table on slightly tapering legs. Top covered with brown leather. Drawer with brass handle. This example made 1935-45. H. 54 cm. W. 38 cm. L. 58 cm.

DKK 8,000-10,000 / € 1,100-1,350



1068



1068

POUL KJÆRHOLM

b. Østervrå 1929, d. Hillerød 1980

"PK 9". A set of four chairs. Chromed steel frame with shell-shaped seat and back upholstered with original, patinated reddish brown leather. Designed 1960. These examples manufactured circa 1960s by E. Kold Christensen, stamped by maker. (4)

DKK 40,000-60,000 / € 5,400-8,050

1069 ☉

BODIL KJÆR

b. Hatting 1932

A rare Brazilian rosewood work/conference table with chromed steel frame. Rail with intergrated storage compartments. This example manufactured circa 1960s by E. Pedersen & Søn. H. 72 cm. W. 105 cm. L. 215,5 cm. *DKK 50,000-60,000 / € 6,700-8,050*



1069



1070

1070

ARNE JACOBSEN

b. Copenhagen 1902, d. s.p. 1971

"The Egg Chair". A pair of easy chairs with profiled aluminum base. Sides, back and loose seat cushion upholstered with slightly patinated natural leather. Model 3317. Designed 1958. These example manufactured 1960s by Fritz Hansen, one with maker's label. (2) *DKK 80,000-100,000 / € 11,000-13,500*



1070

1071

HANS J. WEGNER

b. Tønder 1914, d. Gentofte 2007

"China chair". A pair of nut wood armchairs. Loose seat cushion upholstered with black leather, fitted with buttons. Model 4283. Designed 1944. These examples manufactured 1/1968 by Fritz Hansen, with makers label. (2)

DKK 40,000-50,000 / € 5,400-6,700



1072

HANS J. WEGNER

b. Tønder 1914, d. Gentofte 2007

"China chair". A pair of Cuban mahogany armchairs. Loose seat cushion upholstered with natural patinated leather, fitted with buttons. Model 4283. Designed 1944. These examples manufactured 1975 by Fritz Hansen. Silver plaque in back stamped Fritz Hansen EFT, resp. 62/400 and 63/400, Hans J. Wegner, 1975. (2)

In 1974-1975, Fa. Fritz Hansen decided to make a serial production of the "China Chair" in Cuban mahogany. For 40 years - since 1934, the company had Cuban mahogany at their storage and and they assumed that 400 chairs could be made from the stock. Each chair was given a silver plaque at the bottom part of the back, numbered with a serial number out of 400, company name and Hans J. Wegner's stamped signature.

DKK 40,000-50,000 / € 5,400-6,700



1072



1073



1074

1073

MOGENS KOCH

b. Frederiksberg 1898, d. Copenhagen 1992

Solid oregon pine drawing file. Front with 12 drawers. This example made 1960s by Rud. Rasmussen Cabinet-makers, Copenhagen, with maker's label. H. 81 cm. W. 76 cm. D. 54 cm.

RR label # 24974.

DKK 25,000 / € 3,350



1075

1074

MOGENS KOCH

b. Frederiksberg 1898, d. Copenhagen 1992

A pair of freestanding addition benches with mahogany frame. Seat and back upholstered with black leather. Fitted with leather covered buttons. These examples made circa 1978 by Rud. Rasmussen Cabinetmakers, Copenhagen, with maker's paper label. (2)

RR label # 37566.

DKK 20,000 / € 2,700

1075 ©

OLE WANSCHER

b. Frederiksberg 1903, d. Charlottenlund 1985

Brazilian rosewood cabinet. Front with double-tambour doors, interior with shelves. Legs with brass "shoes". This example made circa 1960s by cabinet-maker A. J. Iversen, Copenhagen with maker's paper label. H. 140. W. 140. D. 40 cm.

DKK 30,000-40,000 / € 4,050-5,400

1076

FRITS HENNINGSEN

b. 1889, d. 1965

Easy chair with curved frame of dark stained wood. Seat and back upholstered with black leather. This example made circa 1950s by cabinetmaker Frits Henningsen. DKK 40,000-60,000 / € 5,400-8,050

1077

OLE WANSCHER

b. Frederiksberg 1903, d. Charlottenlund 1985

A set of four mahogany armchairs. Seats upholstered with black leather. Model J2833. Designed 1958. These examples made 1970s by cabinetmaker A. J. Iversen. (4)

The model was presented at The Copenhagen Cabinet-makers' Guild Exhibition in 1958.

Literature: Grete Jalk [ed.]: "40 Years of Danish Furniture Design", vol. 4, ill. p. 57. DKK 30,000 / € 4,050

1078 ©

OLE WANSCHER

b. Frederiksberg 1903, d. Charlottenlund 1985

"Egyptian Stool". A Brazilian rosewood folding stool. Seat with patinated black leather. This example made 1960s by cabinetmaker A. J. Iversen.

Literature: Grete Jalk [ed.]; "40 Years of Danish Furniture Design", vol. 4, ill. pp. 20-21. DKK 30,000 / € 4,050



1076



1077



1078

1079 ©

IB KOFOD-LARSEN

b. 1921, d. 2003

"Elizabeth". A pair of easy chairs with Brazilian rosewood frame. Sides, back and loose seat cushion upholstered with original brown leather. Model U-56. Designed 1956. These examples made circa 1970s by Christensen & Larsen Cabinetmakers, stamped by maker. (2)

The model was presented at The Copenhagen Cabinetmakers' Guild Exhibition at Designmuseum Danmark in 1958.

Literature: Grete Jalk [ed.]: "40 Years of Danish Furniture Design", vol. 3, ill. p. 48-49.

DKK 150,000-175,000 / € 20,000-23,500



1079

1080 ©

IB KOFOD-LARSEN

b. 1921, d. 2003

A circular Brazilian rosewood coffee table on slightly tapering legs. This example made 1960s by Christensen & Larsen Cabinetmakers, stamped by maker. H. 52 cm. Diam. 120 cm.

DKK 25,000 / € 3,350



1079



1080

1081 ◎
HANS BRATTRUD

b. Dokka 1933

"Scandia". Lounge chair and stool with moulded Brazilian rosewood slat on swivel base and frame of chromed steel. Designed 1957. These examples manufactured circa 1970s by Hove Møbler, Norway.
(2) *DKK 20,000 / € 2,700*

1082
EJNER GRAAE

b. Copenhagen 1914, d. Klampenborg 1989

HENNING HELGER

b. Copenhagen 1912, d. Charlottenlund 1989

12 pairs of polished steel door handles. Designed and manufactured 1960 for The Insurance Association House, Amaliegade, Copenhagen. D. max. 15 cm. L. 12 cm. (12)

DKK 20,000-25,000 / € 2,700-3,350

1083 ◎
DANISH FURNITURE DESIGN

A Brazilian rosewood double-chest of drawers. Front with eight drawers. This example manufactured ca. 1960s by NC Møbler. H. 77 cm. D. 45 cm. W. 166 cm. *DKK 40,000-50,000 / € 5,400-6,700*



1081



1082



1083

1084 ©

HANS J. WEGNER

b. Tønder 1914, d. Gentofte 2007

"AT 325". Freestanding Brazilian rosewood desk, front with two drawers. Chromed steel frame with rosewood "shoes". Designed 1961. This example manufactured 1960-1970s by Andreas Tuck, stamped by maker. H. 71 cm. W. 90 cm. L. 200 cm.

Literature: "Mobilia", 1961.

Literature: Andreas Tuck catalogue, 1964.

DKK 60,000-75,000 / € 8,050-10,000



1084



1085



1085
MART STAM

b. Purmerend 1899, d. Zürich 1986

A set of six chairs with chromed steel frame. Seat and back with patinated natural leather. Model S33. Designed 1926. These examples manufactured circa 1970s by Thonet, stamped by maker. (6)

DKK 20,000 / € 2,700



1086

1086

ARNE JACOBSEN

b. Copenhagen 1902, d. s.p. 1971

"The Swan". A pair of rare easy chairs with laminated moulded teak frame. Seat upholstered with patinated natural leather. Model 4325. Designed 1960. These examples manufactured 1966 by Fritz Hansen, with makers label. (2)

Literature: Carsten Thau and Kjeld Vindum: "Jacobsen", referred to and ill. pp. 469-470.

Literature: Noritsugu Oda: "Danish Chairs", 1999, referred to and ill. p. 62.

DKK 75,000 / € 10,000



1086

1087

ARNE JACOBSEN

b. Copenhagen 1902, d. s.p. 1971

"The Egg Chair". Easy chair with profiled aluminum base. Sides, back and loose seat cushion upholstered with original, patinated natural leather. Model 3317. Designed 1958. This example manufactured 1964 by Fritz Hansen, with maker's label.

DKK 60,000-75,000 / € 8,050-10,000



1087



1088 ©

ARNE JACOBSEN

b. Copenhagen 1902, d. s.p. 1971

Coffee table with Brazilian rosewood top and brass shaker frame. This example manufactured 1958 by Fritz Hansen. H. 47 cm. W. 55 cm. L. 120 cm.

Rare variant with brass frame, manufactured for the Restaurant vestibule in the SAS Royal Hotel, Copenhagen.

Literature: Félix Solaguren-Beascoa: "Jacobsen", III. and referred to p. 103. DKK 20,000-25,000 / € 2,700-3,350



1088



1089

1089

ARNE JACOBSEN

b. Copenhagen 1902, d. s.p. 1971

"Grand Prix". A set of 12 chairs with laminated teak legs. Seat and back upholstered with reddish brown leather. Model 4130. Designed 1957. These examples manufactured circa 1960s by Fritz Hansen. (12)

Literature: Carsten Thau & Kjeld Vindum: "Arne Jacobsen", 1998, ill. and referred to p. 397. DKK 75,000 / € 10,000



1089



1090



1091

1090

ANNA - GRETA SJÖQVIST

Sweden. 20th century.

Handwoven wool carpet in "rölakan" flat weave technique with geometric pattern in blue, yellow, brown and red shades on grey base. Signed AGS. L. 214 cm. W. 143 cm.

DKK 12,000-15,000 / € 1,600-2,000

1091

HENRY W. KLEIN

b. Norge 1919

Chaiselounge with patinated oak frame. Seat, armrests and back with tilting function upholstered with light grey wool. Designed 1960. This example manufactured 1960s by N. A. Jørgensen, Bramin Møbler.

DKK 15,000-20,000 / € 2,000-2,700

1092

ALF SVENSSON

b. Sverige 1923, d. s.p. 1992

A pair of teak easy chairs. Loose cushions in seat and back upholstered with grey wool. These examples manufactured circa 1960s by Dux, Sweden. (2)

DKK 20,000 / € 2,700



1092

1093

HANS HARTL

b. München 1899, d. Darmstadt 1980

Sculptural chaise longue with round, tapering beech legs. Sides, seat and back upholstered with light greyish wool. This example manufactured circa 1950s by Eugen Schmidt, Germany. L. 192 cm.

Literature: The periodical "Møbler", no. 3, 1954, ill. p. 25. DKK 30,000-40,000 / € 4,050-5,400



1093



1094

1094
BRITTA RENDAHL - LJUSTERDAL

b. 1927

Handwoven wool carpet in "rölakan" flat weave technique with wavy pattern in muted blue, green, yellow and grey shades. Signed BR. L. 238 cm. W. 167 cm.

DKK 25,000 / € 3,350



1095

1095
FINN JUHL

b. Frederiksberg 1912, d. Ordrup 1989

"BO 101". A low teak table/bench. Anodized steel frame, later black paint. Teak "shoes", covered with later brass tubes. Raised brass edges. Designed 1953. This example manufactured 1960s by Bovirke. H. 40 cm. L. 150 cm. W. 46 cm.

Literature: Esbjørn Hiort: "Arkitekten Finn Juhl", 1990, ill. pp. 56-57. DKK 20,000-25,000 / € 2,700-3,350



1096



1096
ERLING TORVITS

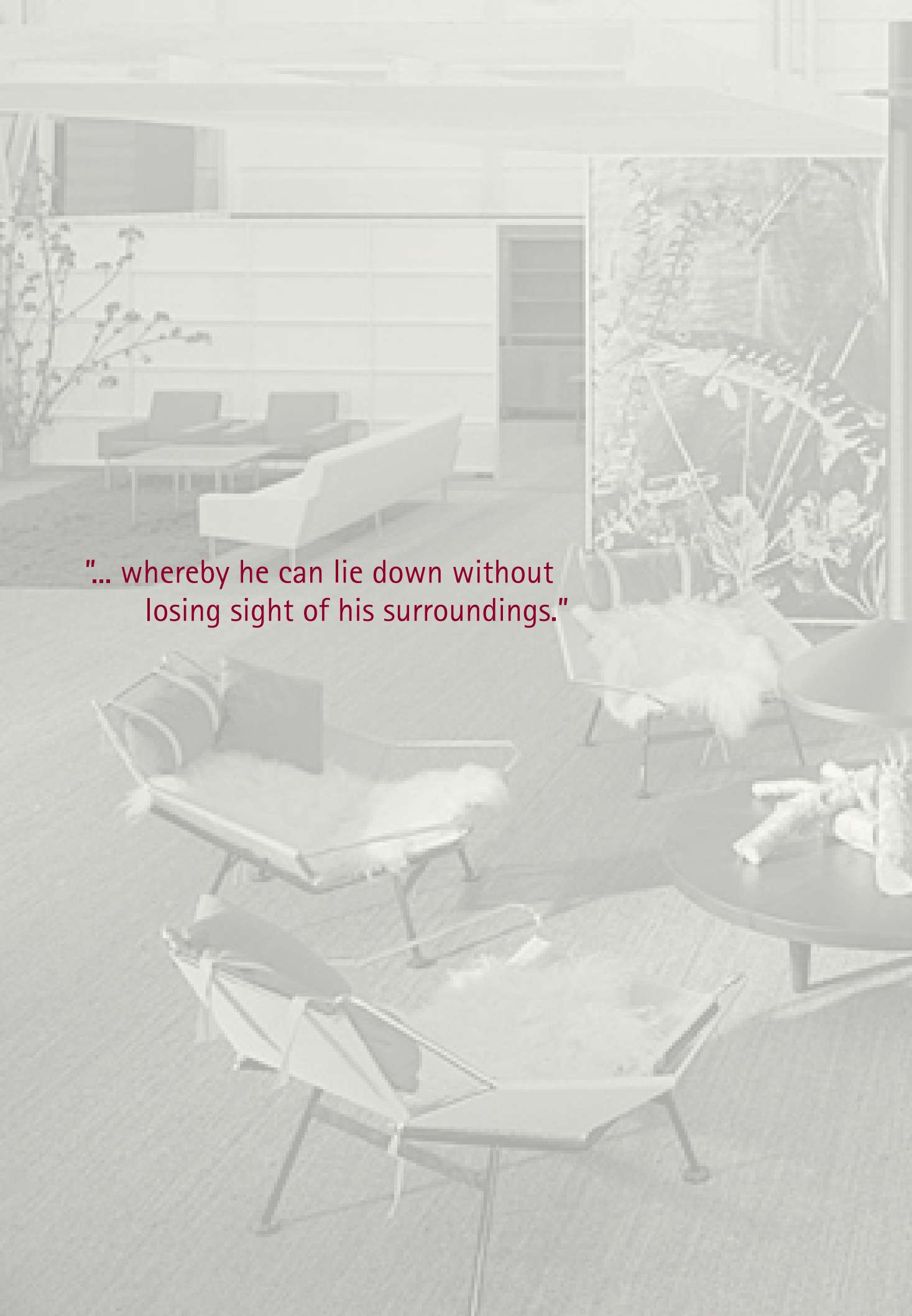
Denmark, 20th century

Freestanding two seater sofa with teak frame. Sides and back upholstered with beige wool. Loose seat cushion upholstered with dark grey wool. This example manufactured 1950s by Dana Møbler. L. 142 cm. *DKK 20,000 / € 2,700*

1097
TORBJØRN AFDAL

b. Voss 1917, d. Oslo 1999

"Ego". A rare pair of armchairs on slanted, slightly tapering oak legs. Seat and back with integrated armrests upholstered with grey wool. Designed 1954. These examples manufactured circa 1960 by Sandvik & Co, Norway. (2) *DKK 30,000 / € 4,050*



"... whereby he can lie down without losing sight of his surroundings."

The Flag Halyard Chair (1950)

Hans J. Wegner's thoughts no doubt constantly circled around furniture design, and the following situation is easily picturable – he is at the beach in Aarhus with his family and makes a hollow in the sand, whereby he can lie down without losing sight of his surroundings. This became a kind of preliminary study and inspired him to design the Flag Halyard Chair, which was presented at the Spring Exhibition of Danish Arts and Crafts in 1950.

With this chair, Wegner proved that he mastered more than wooden furniture. The frame is made of chromed and white or green lacquered steel, and with the flag halyard, the sheepskin and the headrest Wegner completed the look. But the chair was a bit too much for contemporary furniture designers in Denmark. 'The grand old man', Kaare Klint, actually argued that it most of all resembled a "gynaecological examination bed". That the chair was ahead of its time is also obvious from the fact that only a few years later did the manufacturer Getama suggest putting it into production – the managing director believed that production costs would be comparable to that of a bicycle. At the furniture show in Fredericia in 1958, Getama presented a striking arrangement of six Flag Halyard Chairs around an open fireplace. From then onwards, the chair received great deal of attention in Denmark and especially in the US.



1098

HANS J. WEGNER

b. Tønder 1914, d. Gentofte 2007

"Flag Halyard Chair". Easy chair with original white lacquered steel frame and black rubber "shoes". Chromed steel top with flag halyard. Headrest upholstered with orange fabric, white sheepskin included. Model GE 225. Designed 1950. This example manufactured 1960s by Getama.

The model was presented at The Arts & Crafts Spring Exhibition at Designmuseum Danmark in 1950.

Literature: "Dansk Kunsthåndværk", no. 5, 1950, ill. p. 86.

Literature: Noritsugu Oda: "Danish Chairs", 1999, ill. p. 112.

DKK 60,000-80,000 / € 8,050-11,000



1098

1099

HANS J. WEGNER

b. Tønder 1914, d. Gentofte 2007

"Flag Halyard Chair". Easy chair with original white lacquered steel frame and black rubber "shoes". Chromed steel top with flag halyard. Headrest upholstered with orange fabric. Model GE 225. Designed 1950. This example manufactured 1960s by Getama.

The model was presented at The Arts & Crafts Spring Exhibition at Designmuseum Danmark in 1950.

Literature: "Dansk Kunsthåndværk" no. 5, 1950, ill. p. 86.

Literature: Noritsugu Oda: "Danish Chairs", 1999, ill. p. 112.

DKK 50,000-60,000 / € 6,700-8,050



1099

1100

HANS J. WEGNER

b. Tønder 1914, d. Gentofte 2007

"Flag Halyard Chair". Easy chair with original white lacquered steel frame and black rubber "shoes". Chromed steel top with flag halyard. Later headrest upholstered with red/brown fabric. Model GE 225. Designed 1950. This example manufactured 1960s by Getama.

The model was presented at The Arts & Crafts Spring Exhibition at Designmuseum Danmark in 1950.

Literature: "Dansk Kunsthåndværk", no. 5, 1950, ill. p. 86.

Literature: Noritsugu Oda: "Danish Chairs", 1999, ill. p. 112.

DKK 50,000-60,000 / € 6,700-8,050



1100

1101

HANS J. WEGNER

b. Tønder 1914, d. Gentofte 2007

"Flag Halyard Chair". Easy chair with original white lacquered steel frame and black rubber "shoes". Chromed steel top with flag halyard. Model GE 225. Designed 1950. This example manufactured 1960s by Getama.

The model was presented at The Arts & Crafts Spring Exhibition at Designmuseum Danmark in 1950.

Literature: "Dansk Kunsthåndværk", no. 5, 1950, ill. p. 86.

Literature: Noritsugu Oda: "Danish Chairs", 1999, ill. p. 112.

DKK 50,000-60,000 / € 6,700-8,050



1101

1102
CECILIE MANZ

b. København 1972

"Pluralis". Solid ash wood chair with two steps. Signed no. 003/100. This example designed and manufactured 2009 by Mooment. H. 72 cm. W. 68 cm. D. 59 cm.

"Pluralis" was awarded a prize by Statens Kunstfond's design committee at Danish Craft's "Mindcraft" exhibition in Milan, April 2009.

A number of only circa 30 pieces were actually made.

DKK 15,000-20,000 / € 2,000-2,700



1102



1103

1104

HANS J. WEGNER

b. Tønder 1914, d. Gentofte 2007

"Hammock Chair". Oak chaise longue with original flag halyard, assembled with brass fittings. Model GE 2. This example manufactured in the late 1960s by Getama. L. 183 cm.

Acquired by the present owner in the late 1960s.

Presented at The Scandinavian Furniture Fair, in Malmö 1967.

Literature: Noritsugu Oda: "Danish Chairs", ill. and referred to on p. 123.

Literature: "Mobilia", no. 143, 1967.

DKK 30,000-40,000 / € 4,050-5,400



1104

1103

ERIK OLE JØRGENSEN

b. Frederiksberg 1925, d. Vedbæk 2002

A three seater high-back sofa. Patinated teak seat and back, black lacquered steel frame. Cushions upholstered with grey wool. This example manufactured circa 1970 by Georg Jørgensen & Søn. L. 192 cm.

DKK 18,000-20,000 / € 2,400-2,700



1105



1105

POUL KJÆRHOLM

b. Østervrå 1929, d. Hillerød 1980

"PK-20". A pair of easy chairs with steel frame. Seat and back with woven cane. Designed 1968. These examples manufactured 1970s by E. Kold Christensen, stamped by maker. (2)
Literature: "Poul Kjærholm", Arkitektens Forlag, 1999, ill. referred to pp. 30-31. DKK 30,000-40,000 / € 4,050-5,400

1106

HANS J. WEGNER

b. Tønder 1914, d. Gentofte 2007

"JH 810". Freestanding mahogany desk. Rail with two integrated drawers. Runner legs and handles of chromed steel. Designed 1970. This example made 1970s by cabinetmaker Johannes Hansen. With maker's label. H. 72 cm. W. 95 cm. L. 190 cm. *DKK 60,000 / € 8,050*



1106



1107

1107

POUL KJÆRHOLM

b. Østervrå 1929, d. Hillerød 1980

"PK-24". Chaise longue with stainless steel frame. Seat and back of woven cane. Headrest upholstered with patinated Niger leather. Designed 1965. This example manufactured 1960s by E. Kold Christensen. L. 155 cm.

Provenance: Acquired by present owner in the late 1960s.

DKK 100,000-120,000 / € 13,500-16,000





1108 [Ⓟ]

POUL KJÆRHOLM

b. Østervrå 1929, d. Hillerød 1980

Unique dining table. Square oak top, framed with a cross. Chromed steel frame. This table a variant of "PK-40" and the PK-conference table. This example manufactured circa 1978-1979 by E. Kold Christensen. H. 65,5 cm. W./L. 140 cm. *Provenance: E. Kold Christensen's private collection, the house on Piniehøj, Rungsted. Hence by descent in the family.*

DKK 150,000-200,000 / € 20,000-27,000



1108



1109





1109

POUL KJÆRHOLM

b. Østervrå 1929, d. Hillerød 1980

"PK 9". A set of four chairs on chromed steel frame. Shell-shaped seat and back upholstered with original, patinated black leather. Designed 1960. These examples manufactured circa 1962 by E. Kold Christensen, two chairs stamped. (4)

Provenance: E. Kold Christensen's private collection, the house on Piniehøj, Rungsted. Hence by descent in the family.

DKK 120,000-150,000 / € 16,000-20,000

1110

POUL KJÆRHOLM

b. Østervrå 1929, d. Hillerød 1980

"PK 61". A square coffee table with chromed steel frame. Top of Porsgrunn marble with fossils. Designed 1956. This example manufactured 1960s by E. Kold Christensen, stamped by maker. H. 33 cm. W. 80 cm. L. 80 cm.

DKK 100,000-120,000 / € 13,500-16,000



1110

1111

HANS J. WEGNER

b. Tønder 1914, d. Gentofte 2007

"The Flag Halyard Chair". Easy chair with original green lacquered steel frame with oak "shoes". Seat and back's frame of chromed steel. Seat and back with flag halyard. Headrest upholstered with red cotton fabric, white sheepskin included. Model GE 225. Designed 1950. This example manufactured circa 1960s by Getama.

The model was presented at The Arts & Crafts Spring Exhibition at Designmuseum Danmark in 1950.

Literature: "Dansk Kunsthåndværk", no. 5, 1950, ill. p. 86.

Literature: Noritsugu Oda: "Danish Chairs", 1999, ill. p. 112.

DKK 60,000-80,000 / € 8,050-11,000



1111

1112

HANS J. WEGNER

b. Tønder 1914, d. Gentofte 2007

"AT 34". A cube-shaped solid oak bar cabinet on round steel legs. Interior with storage space for bottles and glasses, side mounted with drawer. Designed 1956. This example manufactured circa 1970s by Andreas Tuck, stamped by maker. H. 50 cm. W. 50 cm. L. 52 cm.

DKK 40,000 / € 5,400



1112

1113

BRITTA RENDAHL-LJUSTERDAL

b. 1927

Handwoven wool carpet in "rölakan" flat weave technique with geometric polychrome pattern. Signed BR. L. 238 cm.

W. 172 cm.

DKK 20,000 / € 2,700



1113



1114

1114
HANS J. WEGNER

b. Tønder 1914, d. Gentofte 2007

"The Chair". A mahogany armchair, seat upholstered with light brown leather. Model JH 503. Designed 1949. This example made circa 1960 by cabinetmaker Johannes Hansen, stamped by maker. *DKK 10,000 / € 1,350*

1115
HANS J. WEGNER

b. Tønder 1914, d. Gentofte 2007

"JH 539". A patinated oak stool on tapering legs. Seat with woven cane. Designed 1954. This example made ca. 1960 by cabinetmaker Johannes Hansen. H. 41 cm. L. 66 cm. W. 38,5 cm. *The model was presented at the Copenhagen Cabinetmakers' 400th anniversary exhibition in Forum, 1954.*

Literature: Grete Jalk [ed.]: "40 Years of Danish Furniture Design", vol. 3, ill- pp. 280-281.

DKK 10,000 / € 1,350



1115



1116



1116

HANS J. WEGNER

b. Tønder 1914, d. Gentofte 2007

"JH 571". Freestanding solid teak desk on slightly oblique oak legs. Front with two drawers. Stretchers, drawer mounting and handles of brass. This example made circa 1960 by cabinet-maker Johannes Hansen, stamped by maker. H. 73 cm. W. 90 cm. L. 195 cm.

Presented at the Copenhagen Cabinetmakers' Guild Exhibition in 1954.

Literature: Grete Jalk [ed.]: "40 Years of Danish Furniture Design", vol. 3, pp. 280-81.

Literature: Johan Møller Nielsen: "Wegner - en dansk møbelkunstner", ill. p. 87.

DKK 150,000-200,000 / € 20,000-27,000



INDEX

A

Aalto, Alvar	1057
Afdal, Torbjørn	1097
Andersen, Knud	943, 945

B

Bang, Arne	934, 935 936, 937, 940
Bergström, Hans	1054
Bernadotte, Sigvard	901, 902 903, 904, 905
Bindesbøll, Thorvald	879, 880, 910
Blomberg, David	1027
Bluitgen, Ib	906
Boesen, Viggo	1037
Brattrud, Hans	1081
Britta Rendahl-Ljusterdal	1094, 1113

D

Danish Cabinetmaker	1058, 1067
Danish Furniture Design	978, 1083
Ditzel, Jørgen	953
Ditzel, Nanna	953

F

Fabricius, Preben	968
Fisker, Kay	911, 912, 1028
Frank, Josef	969, 970

G

Graae, Ejner	1082
--------------	------

H

Halier, Carl	943
Hammert, Helge	977
Hansen Jr., Severin	951
Hansen, Karl Gustav	908
Hartl, Hans	1093
Helger, Henning	1082
Henningsen, Frits	1030, 1031, 1076
Henningsen, Vagn Aage	915
Henningsen, Poul	983, 984, 985 986, 987, 988 989, 990, 991
Hjorth, Axel Einar	1048, 1050
Hvidt, Peter	1020
Hållfast, Nea	1059

J

Jacobsen, Arne	995, 997 998, 1070, 1086 1087, 1088, 1089
Jensen, Georg	873 874, 875, 876, 877 881, 882, 883, 886 887, 888, 889, 891

Jensen, Søren Georg	914
Johansson, Judith	982
Juhl, Finn	946, 947, 948, 1021 1023, 1024, 1025, 1060 1061, 1063, 1066, 1095
Jørgensen, Erik Ole	963, 1103

K

Kastholm, Jørgen	968
Kindt-Larsen, Edvard	1018, 1035
Kindt-Larsen, Tove	1018, 1035
Kjær, Bodil	999, 1069
Kjærholm, Poul	993 994, 1003, 1004, 1005 1006, 1008, 1068, 1105 1107, 1108, 1109, 1110
Klein, Henry W.	1091
Klint, Kaare	1029 1032, 1033, 1034
Koch, Mogens	1051 1052, 1073, 1074
Koefoed, Niels	980
Koenig, Berit	1010
Kofod-Larsen, Ib	952 1011, 1079, 1080
Koppel, Henning	896, 897, 898 899, 900, 909
Kristiansen, Kai	1015
Krogh, Erik	1007
Kühn, Ernst	1044, 1055

L

Langkilde, Svend	1001, 1002
Lauritzen, Vilhelm	971, 972 1041, 1042, 1043
Lyngfeldt Larsen, Kai	1016

M

Madsen, Ib	979
Manz, Cecilie	1102
Martinuzzi, Napoleone	1047
Mogensen, Børge	962, 964 965, 967, 1017
Moos, Peder	949
Mortensen, John	992
Mølgaard-Nielsen, Orla	1020

N

Nielsen, Harald	892, 894, 895, 917 918, 919, 920, 921
Nielsen, Jais	942, 944
Nilsson, Barbro	975, 996
Nilsson, Oscar	1053
Norell, Arne	1038
Norén, Svea	1045

O

Olsen, Hans	981
Orrefors	974

P

Pålsson, Folke	963
----------------	-----

R

Reiff, Erik	933
Rendahl-Ljusterdal, Britta	1094, 1113
Richter, Marianne	956
Rohde, Johan	878, 884, 885 890, 893, 916

S

Salto, Axel	925, 926, 927, 928 929, 930, 939, 941
Schlegel, Frits	972, 973
Schubell, Acton	979
Schulz, Otto	1026
Siesbye, Alev Ebüzziya	922 923, 924
Silow, Ingegerd	1039, 1040
Sjöqvist, Anna-Greta	950 1022, 1065, 1090
Spanish Design	1009
Stam, Mart	1085
Svedberg, Elias	1056
Svensson, Alf	1092
Swedish design	966 1012, 1014, 1049

T

Thorsson, Nils	945
Torvits, Erling	1096
Trier Mørch, Ibi	907

U

Urban, Rey	913
------------	-----

V

Vagn Aage Hemmingsen	915
Vasegaard, Gertrud	938
Vestergaard Jensen, Helge	1062
Vodder, Arne	1064
Voltelen, Mogens	1046

W

Wanscher, Ole	1075, 1077, 1078
Watting, William	1036
Wegner, Hans J.	954, 955, 957 958, 959, 960, 1000, 1013 1019, 1071, 1072, 1084, 1098 1099, 1100, 1101, 1104, 1106 1111, 1112, 1114, 1115, 1116
Weiss, Per	931, 932
Wolfenstein, Tom	976
Wørts, Erik	961

ASIAN ART & ANTIQUES

June 2017

We are already receiving consignments for this summer's Asian auctions. If you have Asian art that you are considering selling, we can offer you a free and non-binding valuation.



The interest in Asian art has increased significantly in recent years. A rare blue and white Ming porcelain Meiping vase from the Yongle period stands as the clearest evidence of this. With a hammer price of DKK 12 million (€ 1.6 million) we beat our own auction record for an Asian piece of decorative art.



BRUUN RASMUSSEN

AUCTIONEERS OF FINE ART

Disse købsvilkår udgør Bruun Rasmussen Kunstauktioner A/S' ("BRK") købsvilkår for traditionelle auktioner og er gældende fra 1. februar 2017. BRK kan til enhver tid ændre købsvilkårene.

Ved bud accepterer budgiver/køber at være bundet af de til enhver tid gældende købsvilkår, som fremgår på bruun-rasmussen.dk. Købsvilkårene gælder både i forhold til erhvervsdrivende og forbrugere.

FØR AUKTIONEN

1 VURDERING AF GENSTANDE

- 1.1 Alle udbudte genstande er vurderet af BRK. Vurderingen er et skøn over det forventede hammerslag, jf. punkt 5.3. Vurderingen er baseret på tidligere salg af samme type genstande og erfaringer hos BRK. Hammerslag kan derfor falde højere eller lavere ud end vurderingen.

2 BESKRIVELSE AF GENSTANDE

- 2.1 Udbudte genstande præsenteres med fotos og beskrivelse i kataloger og på bruun-rasmussen.dk. Beskrivelsen foretages efter bedste overbevisning af BRK og ud fra en nøje undersøgelse efter den på salgstidspunktet herskende opfattelse blandt eksperter.
- 2.2 De udbudte genstande er af en alder og art, der bevirker, at de ofte er behæftede med slitage eller beskadigelser. Som udgangspunkt sælges alt som brugte genstande. Derfor beskrives almindelig slitage ikke.
- 2.3 Hvis en potentiel køber ikke har mulighed for at besigtige genstanden ved selvsyn, kan der i de fleste tilfælde udfærdiges en beskrivelse af standen i en konditionsrapport. Beskrivelsen tjener blot som identifikation og kan ikke anvendes til vurdering af genstandens stand eller værdi.
- 2.4 I visse tilfælde vælger BRK at beskrive en genstands oprindelse. Det sker, hvis en tidligere ejer er offentlig kendt, og/eller hvis historien om et tidligere ejerskab belyser genstanden og dens art. Omvendt sker det også, at sådanne informationer udelades fra beskrivelsen, f.eks. for at imødekomme sælgers ønske om diskretion.
- 2.5 Vurderingen og beskrivelsen kan blive revideret forud for auktionen. Ændringer offentliggøres på bruun-rasmussen.dk.

3 EFTERSYN

- 3.1 Udbudte genstande udstilles op til auktionen i et show-room hos BRK. Potentielle budgivere opfordres til at se genstanden efter i detaljer på disse eftersyn, hvor der også er mulighed for at rådføre sig hos vurderingssagkyndige.

UNDER AUKTIONEN

4 BRK'S ROLLE

- 4.1 Salget af en genstand formidles af BRK på vegne af sælger. BRK afhænder altid udbudte genstande til den højst mulige pris under budgivningen.
- 4.2 Udbudte genstande kan have en med sælger aftalt mindstepris, hvorunder den ikke kan sælges. Denne pris er fortrolig.
- 4.3 De traditionelle auktioner overværes af en af Justitsministeriets beskikket auktionsleder, der sikrer, at auktionerne går retmæssigt for sig.

5 BUDGIVNING

- 5.1 Auktionerne afvikles i danske kroner. De tilnærmelsesvise beløb i euro/US dollar vil blive oplyst på skærme i auktionssalen og i øvrigt på opfordring.
- 5.2 Auktionarius bestemmer overbuds størrelse og i hvilket tempo, auktionen afvikles. Overbud stiger normalt med 5 % - 10 % i forhold til det foregående bud. Normalt sælges der 50-100 katalognumre i timen.
- 5.3 Hammerslag betegner både det forhold, at auktionarius slår med hammeren og derved markerer budgivningens afslutning, og den pris (budsum), den udbudte genstand sælges til. Se punkt 7 vedrørende beløb, der tillægges hammerslaget.
- 5.4 Køber er den budgiver, der opnår hammerslag. Ved hammerslaget indgås på baggrund af disse købsvilkår en bindende købs-/salgsaftale.
- 5.5 Bydes på andres vegne, hæfter budgiver som selvskyldnerkautionist for handlen.
- 5.6 Genstande købes som beset, og køber har uanset budtype ingen fortrydelsesret, heller ikke efter forbrugeraftaleloven.
- 5.7 Budgiver skal efter anvisninger fra BRK identificere sig og dokumentere sin betalingsdygtighed, f.eks. ved registrering af gyldigt betalings-/kreditkort, bankgaranti eller indbetaling af depositum.
- 5.8 BRK kan nægte at acceptere et bud, hvis en tilstrækkelig sikkerhed for betaling mangler, eller hvis budgiver tidligere har misligholdt betalingsforpligtigelser ved køb hos BRK.
- 5.9 Auktionslederen træffer i samråd med auktionarius afgørelse i alle tvivlstilfælde omkring budgivningen.

6 BUDTYPER

- 6.1 Der er følgende muligheder for at afgive bud:
PERSONLIGT FREMMØDE:

Registrering og udlevering af bydeskilt foregår ved indgangen til auktionssalen. Når budgiver ønsker at byde, signaleres dette til auktionarius ved at række bydeskiltet i vejret og tydeligt fremvise dets nummer.

KOMMISSIONSBUD:

Det ønskede maksimale bud kan afgives via bruun-rasmussen.dk frem til auktionens start eller pr. e-mail, fax eller telefon, så budet er modtaget senest 24 timer forud for auktionens start. En kommissionær byder på budgivers vegne inden for rammerne af det ønskede maksimalbud og vil altid afgive lavest muligt overbud.

TELEFONBUD:

I forhold til visse genstande er der mulighed for at blive ringet op af en medarbejder fra BRK, der vil byde på budgivers vegne under auktionen. Servicen kan bestilles via bruun-rasmussen.dk indtil tre timer før auktionens start.

LIVE BIDDING:

Det er muligt at følge auktionen live og byde med via bruun-rasmussen.dk.

FORAUKTION:

Visse traditionelle auktioner indledes med en net-auktion. De højeste bud på net-auktionen danner udgangspunktet på den efterfølgende traditionelle auktion.

EFTER AUKTIONEN

7 BELØB, DER TILLÆGGES HAMMERSLAGET

7.1 I tillæg til hammerslaget, jf. punkt 5.3, skal køber for den enkelte genstand betale købersalær og, hvis betingelserne er opfyldt, de øvrige beløb, der er nærmere beskrevet nedenfor. Det samlede beløb, som køber skal betale til BRK, benævnes "købesummen".

7.1.1 KØBERSALÆR:

Hammerslaget tillægges et salær til BRK. På de traditionelle auktioner udgør salæret 24 % af hammerslaget + moms af salæret, i alt 30 %. For frimærker og mønter udgør salæret 20 % af hammerslaget + moms af salæret, i alt 25 %.

7.1.2 FULDMOMS:

Visse genstande handles efter de gældende regler om fuldmoms. Her beregnes der moms på 25 % af både hammerslag og salær. Disse genstande er i beskrivelsen i kataloget og på bruun-rasmussen.dk mærket med symbolet "✳" eller med teksten: "Dette emne handles med fuldmoms".

7.1.3 FØLGERETSVEDERLAG:

Ifølge dansk lovgivning om ophavsret skal der opkræves følgeretsvederlag for værker af nyere danske og visse udenlandske kunstnere, som enten er nulevende eller ikke har været døde i mere end 70 år. Vederlaget opkræves på vegne af Copydan Billedkunst. Disse værker er i kataloget og på bruun-rasmussen.dk mærket med "CD". Copydan-afgiften tillægges hammerslaget + salær (ekskl. moms), når beløbet overstiger 300 euro, som angivet nedenfor:

Hammerslag + salær (ekskl. moms)	Betalingsssats
300 - 50.000 euro	5%
50.000 - 200.000 euro	3%
200.000 - 350.000 euro	1%
350.000 - 500.000 euro	0.5%
over 500.000 euro	0.25%

Copydan-afgiften kan ikke overstige 12.500 euro (ekskl. moms) for den enkelte genstand. Afgiften skal betales i danske kroner, og omregningskursen (EUR/DKK) fastsættes af Copydan Billedkunst.

7.1.4 BETALINGS-/KREDITKORTGEBYR:

BRK forbeholder sig ret til at opkræve de af indløsnings-selskaberne pålagte betalings-/kreditkortgebyrer. Satserne fremgår ved budgivning via bruun-rasmussen.dk og ved betaling.

8 BETALINGSFRIST

8.1 Købesummen forfalder til betaling ved hammerslaget, og køber har herefter otte dage til at betale købesummen til BRK.

9 BETALINGSMÅDER

9.1 Betaling kan ske på følgende måder:

A: MED BETALINGS-/KREDITKORT (Dankort, Visa, MasterCard, Diners Club, China UnionPay og JCB) eller kontant (op til 50.000 kr./ca. 6.700 euro) i auktionssalen eller efterfølgende i en afdeling hos BRK.

B: MED BETALINGS-/KREDITKORT (Dankort, Visa, MasterCard, Diners Club og JCB) på bruun-rasmussen.dk under købers personlige side.

C: VIA BANKOVERFØRSEL til en BRK's konto i Danske Bank: 4183 4310970638 · Swift/BIC: DABADKKK · IBAN: DK4130004310970638.

10 MOMSFRITAGELSE, -BETALING OG -DEPONERING

10.1 Visse købere kan vælge hvilken momstype, der skal være gældende for handlen. Valget skal meddeles BRK senest to hverdage efter købet og kan ikke omgøres.

A: Momsregistrerede virksomheder i Danmark kan vælge, at handlen skal ske efter reglerne om fuldmoms, jf. punkt 7.1.2.

B: Momsregistrerede virksomheder i et andet EU-land kan fritages for dansk moms, når det kan dokumenteres, at genstanden er transporteret til den udenlandske adresse, som køber har oplyst over for BRK, og som er anført på fakturaen. I sådanne tilfælde skal der afregnes moms efter de gældende regler i det land, hvor køber er momsregistreret. Det tilrådes at søge oplysning hos de lokale myndigheder. Køber kan undlade at gøre brug af muligheden for momsfrigtagelse og i stedet betale dansk brugtmoms/fuldmoms.

C: Købere med bopæl uden for EU kan fritages for dansk moms, når det kan dokumenteres, at genstanden er transporteret ud af EU. BRK udsteder så vidt muligt og mod gebyr de fornødne eksportpapirer, som skal fremvises ved toldmyndighederne. Køber kan undlade at gøre brug af muligheden for momsfrigtagelse og i stedet betale dansk brugtmoms/fuldmoms.

10.2 Momsregistrerede virksomheder i et andet EU-land og købere med bopæl uden for EU skal deponere den danske moms af fakturabeløbet hos BRK, indtil eksporten er gennemført på dokumenteret lovpligtig vis. Foretages eksporten af en af BRK godkendt speditør, skal momsen ikke deponeres. Se listen over godkendte speditører på bruun-rasmussen.dk

11 OVERSKRIDELSE AF BETALINGSFRIST

11.1 Overskrides en betalingsfrist, herunder fristen i punkt 8, opkræves morarenter, som beregnes efter Nationalbankens officielle udlånsrente + 8 % om året af det skyldige beløb.

11.2 Betales købesummen inkl. renter ikke senest ti dage efter, at der er fremsat påkrav herom, er BRK berettiget til at søge købesummen betalt ved modregning i depositum/ved træk på bankgaranti eller at hæve købet.

11.3 Hæves købet, er BRK berettiget til at sælge genstanden på en ny auktion og kræve omkostningerne og en eventuel difference mellem hammerslag (samt salær), der er opnået på de to auktioner, betalt af den misligholdende køber.

- 11.4 Alle forfaldne krav (inkl. omkostninger), som ikke betales rettidigt, kan BRK i tillæg til inkasso søge inddrevet på følgende måder:
- A: For købers regning sælge genstande indleveret til auktion af eller på vegne af køber. Salget kan gennemføres uden hensyntagen til en aftalt mindstepris. Genstande indleveret til auktion kan ikke kræves udleveret, så længe forfalden gæld henstår ubetalt.
- B: Inddrage købers tilgodehavende hos BRK, herunder tilgodehavende fra salg af genstande indleveret af eller på vegne af køber, uanset om et sådant tilgodehavende stammer fra auktionssalg, som ligger forud for eller efter tidspunktet for købers misligholdelse.

12 AFHENTNING OG UDLEVERING

- 12.1 Ejendomsretten til en købt genstand overgår til køber, når hele købesummen inkl. eventuelle renter og gebyrer er betalt, og først herefter kan udlevering af genstanden finde sted.
- 12.2 Ved udlevering af en købt genstand forbeholder BRK sig retten til at kræve tilfredsstillende dokumentation for, at den person, som ønsker genstanden udleveret, enten selv er køberen eller er bemyndiget af køberen til at få genstanden udleveret.
- 12.3 Udlevering af visse våben kræver forevisning af gyldig våbentilladelse. Sådant krav er angivet med teksten "Køb af dette emne kræver forevisning af gyldig våbentilladelse" i kataloget og på bruun-rasmussen.dk.
- 12.4 Købte genstande henligger fra hammerslaget for købers regning og risiko. Afhentning skal ske senest otte dage efter sidste auktionsdag.
- 12.5 Foretages afhentningen ikke rettidigt, transporteres de købte genstande til et lager for købers regning og risiko. Transporten koster 150 kr. inkl. moms pr. genstand, og opbevaringen koster 150 kr. inkl. moms pr. genstand pr. påbegyndt uge. Henligger en genstand uafhængt i så lang tid, at lagerlejen overstiger genstandens værdi, er BRK berettiget til for købers regning og risiko og uden hensyn til mindstepris at bortauktionere genstanden eller sælge den underhånden. Køber hæfter fortsat for udgifter til transport og lagerleje, der ikke dækkes ved sådant salg.

13 FORSENDELSE

- 13.1 Er køber forhindret i selv at afhente en genstand, tilbyder BRK for købers regning og risiko at emballere og arrangere forsendelse enten med post eller speditør. Se punkt 12.2 angående legitimation.

14 EKSPORTTILLADELSE

- 14.1 For at sikre at dansk kulturarv af afgørende betydning forbliver i Danmark, kan Kulturværtdiudvalget for visse genstandes vedkommende nedlægge eksportforbud. Hvis køber ønsker at eksportere en genstand ud af Danmark, hvor der er nedlagt et eksportforbud, annulleres købet, og Kulturværtdiudvalget er forpligtet til at overtage genstanden til den pris, der blev opnået på auktionen. Køber kan ikke rejse krav mod BRK som følge af, at et eksportforbud bliver nedlagt.
- 14.2 CITES-konventionen har til formål at stoppe ulovlig handel med genstande fremstillet af udryddelsestruede vilde dyr og planter. Genstande omfattet af CITES-konventionen, liste 1, må kun handles, når der foreligger en dispensation i form af et såkaldt CITES-certifikat. BRK indhenter det fornødne certifikat fra Naturstyrelsen, der tillader handel og eksport til lande inden for EU. Dog kan genstande, som er færdigforarbejdet før 1947, frit handles inden for EU uden et certifikat. Ved eksport til lande uden for EU kræves en CITES-eksporttilladelse. I forbindelse

med eksport til lande uden for EU kan særlige regler gøre sig gældende ifm. importen, og køber opfordres til at indhente oplysninger fra egne myndigheder. Såfremt en genstand er omfattet af CITES-konventionen, liste 1, vil det fremgå af beskrivelsen på bruun-rasmussen.dk og være markeret med symbolet "☉" i kataloget.

15 MANGLER VED KØBTE GENSTANDE

- 15.1 Købelovens mangelsregler kan finde anvendelse. Nedenfor er angivet et ikke udtømmende uddrag af købers mangelsbeføjelser.
- 15.2 Køber er berettiget til at annullere et køb, hvis beskrivelsen har været behæftet med væsentlige fejl, der har ført til et højere hammerslag, end en korrekt beskrivelse ville have resulteret i. I sådanne tilfælde vil den samlede købesum blive refunderet. Køber kan ikke kræve betaling af renter af købesummen eller kræve dækning af anden udgift eller tab.
- 15.3 Et køb kan ikke annulleres, og køber kan ikke kræve købesummen refunderet eller rejse noget andet krav mod BRK, hvis beskrivelsen af genstanden er i overensstemmelse med punkt 2, eller hvis en påvisning af falskneri havde krævet brug af videnskabelige metoder, der enten ikke var tilgængelige på salgstidspunktet, havde været uforholdsmæssigt omkostningskrævende at anvende eller havde ført til beskadigelse af den pågældende genstand.
- 15.4 Krav om annullering af et køb skal meddeles BRK, når køber er blevet bekendt med det forhold, der berettiger køber til at annullere købet, dog senest to år fra den seneste afhentningsdato efter punkt 12.4. Den købte genstand skal returneres til BRK i samme stand som på hammerslagstidspunktet. Overholdes disse betingelser ikke, mister køber retten til at annullere købet og kan ikke kræve købesummen refunderet. Køber er selv ansvarlig for at betale de omkostninger, der er forbundet med returnering af genstanden.

16 INDSIGELSE- OG ANSVARSBEGRÆNSNING

- 16.1 BRK tager forbehold for fejl, tekniske vanskeligheder samt udefrakommende misbrug eller forstyrrende påvirkning under auktionen. Budgivere kan ikke rejse noget krav mod BRK som følge heraf.
- 16.2 Køber er i alle tilfælde selv ansvarlig for korrekt betaling af moms og andre afgifter, gebyrer mv. i overensstemmelse med danske og udenlandske regler.
- 16.3 Medmindre andet fremgår af disse købsvilkår, kan BRK aldrig blive ansvarlig for budgivers/købers driftstab, avancetab, andre indirekte tab eller følgeskader.

17 PERSONDATAPOLITIK

- 17.1 Det er vigtigt for BRK at sikre fortrolighed og sikkerhed omkring budgivers/købers personlige oplysninger. Persondatapolitikken fremgår af bruun-rasmussen.dk.

18 KLAGE, TVISTLØSNING OG LOVVALG

- 18.1 Har budgiver/køber en klage, kan der altid rettes henvendelse til BRK.
- 18.2 Er budgiver/køber forbruger, og kan der ikke findes en løsning, kan der klages til Center for Klageløsning, Carl Jacobsens Vej 35, 2500 Valby, hvis betingelserne herfor er opfyldt. Budgiver/køber kan klage til Center for Klage-løsning via forbrug.dk. Ved indgivelse af en klage skal budgiver/køber oplyse e-mailadressen: kfst@kfst.dk.
- 18.3 Tvister skal indbringes i Danmark ved Københavns Byret, jf. dog punkt 18.2. I forbrugerforhold gælder de ufravigelige værmetingsregler.

Jesper Bruun Rasmussen, auktionsholder

These conditions of purchase represent Bruun Rasmussen Kunstauktioner A/S' ("BRK") conditions of purchase for traditional auctions and are effective from 1 January 2017. BRK may modify the conditions of purchase at any time.

By bidding, the bidder/buyer accepts the current conditions of purchase as they appear on bruun-rasmussen.dk. The conditions of purchase are applicable to both business owners and consumers.

BEFORE THE AUCTION

1 VALUATION OF ITEMS

- 1.1 All the offered items are valued by BRK. The valuation is an estimate based on the expected hammer price, see paragraph 5.3. The estimate is based on the previous sale of similar items as well as BRK's past experience. The hammer price can therefore be higher or lower than the estimated price.

2 DESCRIPTION OF ITEMS

- 2.1 Items up for auction are presented with photographs and descriptions in catalogues and on bruun-rasmussen.dk. The description is worded according to the best of BRK's knowledge and based on detailed research in accordance with the prevailing views among experts at the time of sale.
- 2.2 The items up for auction are of an age and nature that often mean that they are in a worn or damaged condition. As a starting point everything is sold as used items. For this reason, the results of regular wear and tear are not included in the descriptions.
- 2.3 If a potential buyer is unable to inspect the item in person, a description of the item's condition can be made in a condition report in most cases. The description merely serves as identification and cannot be used to assess the item's condition or worth.
- 2.4 In some cases, BRK may choose to describe an item's provenance. Such a description is made if a former owner is publicly known and/or if the story of previous ownership sheds further light on the item and its background. In other cases, such information is left out of the description, for instance to meet the seller's wish for privacy.
- 2.5 It is possible that the estimate and description are revised prior to the auction. Changes are published on BRK's website.

3 PREVIEW

- 3.1 Items up for auction are presented prior to the auction in one of BRK's showrooms. Potential bidders are encouraged to inspect the items closely at these previews, where they also have the opportunity to consult with the valuation experts.

DURING THE AUCTION

4 THE ROLE OF BRK

- 4.1 The sale of an item is facilitated by BRK on behalf of the seller, and BRK always sells items up for auction at the highest price offered during the bidding round.
- 4.2 Items up for auction can have a reserve price that has been agreed upon with the seller. The price is confidential and the item cannot be sold below this price.
- 4.3 The traditional auctions are presided over by one of the Danish Ministry of Justice's appointed auctioneers, ensuring that the auctions proceed correctly and lawfully.

5 BIDDING

- 5.1 The currency used while the auctions take place is Danish kroner. The approximate amount in euro/US dollars is shown on screens in the saleroom and also on request.
- 5.2 The auctioneer determines the size of the bid increment and the pace of the auction. Bid increments usually rise by 5% - 10% compared to the previous bid. Approximately 50-100 auction lots are sold per hour.
- 5.3 The hammer price refers both to the gavel used by the auctioneer that signifies the end of a bidding round on an item and to the price (bidding amount) that the item up for auction is sold for. See paragraph 7 regarding amounts added to the hammer price.
- 5.4 The buyer is the bidder that submits the highest bid, thereby obtaining the hammer price. At the moment the hammer price is determined, a binding purchase/sale agreement is entered into based on these conditions of purchase.
- 5.5 If bids are made on behalf of others, the bidder serves as surety for the transaction.
- 5.6 Items are purchased in their present state and condition, and regardless of the type of bidding the buyer has no right to withdraw his bid, neither under the Danish Consumer Contracts Act.
- 5.7 Bidders are required, in accordance with BRK's instructions, to identify themselves and document their ability to pay, for instance by registration of a valid debit/credit card, bank guarantee or a deposit.
- 5.8 BRK may refuse to accept a bid if a sufficient guarantee of the bidder's ability to pay is not provided, or if the bidder has previously defaulted on payment obligations on purchases from BRK.
- 5.9 The overseeing auctioneer will, in consultation with the auctioneer at the podium, decide what to do in matters of dispute concerning a bidding round.

6 TYPES OF BIDDING

- 6.1 Bidding options:
IN PERSON:
Registration and obtaining the bidding paddle take place at the entrance to the saleroom. When the bidder wishes to bid, it is signalled to the auctioneer on the podium by raising the bidding paddle in the air and clearly displaying its number.
COMMISSION BIDS:
The intended maximum bid can be submitted via bruun-rasmussen.dk until the start of the auction or by e-mail, fax or phone, so that the bid is received no later than 24 hours prior to the start of the auction. A commission agent

bids on behalf of the bidder within the limits of the stated maximum bid. The commission agent will always bid the lowest possible amount to achieve the hammer price.

TELEPHONE BID:

With certain items it is possible to have a BRK employee call the bidder over the phone. The employee will then bid on behalf of the bidder during the auction. The service can be booked via bruun-rasmussen.dk up until three hours before the auction is set to begin.

LIVE BIDDING:

It is possible to follow the auction live and bid on the auction lots via bruun-rasmussen.dk.

PRE-AUCTION:

Some traditional auctions are preceded by an online auction. The highest bids from the online auction then represent the starting bids at the following traditional auction.

AFTER THE AUCTION

7 AMOUNTS ADDED TO THE HAMMER PRICE

7.1 In addition to the hammer price, see paragraph 5.3, the buyer pays a buyer's premium for the individual items as well as the other amounts described below if the conditions for these are applicable. The total amount that the buyer pays to BRK is called the "purchase price".

7.1.1 Buyer's Premium: The hammer price always includes an additional fee to BRK. At the traditional auctions, the fee is 24% of the hammer price + VAT of the fee, 30% in total. For stamps and coins, the fee is 20% of the hammer price + VAT of the fee, a total of 25%.

7.1.2 Full VAT: Certain items are sold at auction in accordance with the current rules regarding full VAT. In such a situation, a VAT of 25% is imposed on both the hammer price and the buyer's premium. These items are marked in the catalogue and on bruun-rasmussen.dk with the symbol "✳", or with the text: "This item is sold with full VAT".

7.1.3 Royalty Fee: In accordance with Danish copyright law, royalty fees have to be charged for works by new Danish and certain foreign artists, who are either alive or have not been dead for more than 70 years. The fee is charged on behalf of Copydan Visual Arts. These works are marked "CD" in the catalogue and on bruun-rasmussen.dk. The Copydan fee is added to the hammer price + the buyer's premium (exclusive of VAT) if the amount exceeds EUR 300, as indicated below:

Hammer price + buyer's premium (ex. VAT)	Payment Rate
300 - 50.000 euro	5%
50.000 - 200.000 euro	3%
200.000 - 350.000 euro	1%
350.000 - 500.000 euro	0.5%
over 500.000 euro	0.25%

The Copydan fee cannot exceed EUR 12,500 (ex. of VAT) for each item. The fee must be paid in Danish kroner, and the conversion rate (EUR/DKK) is set by Copydan Visual Arts.

7.1.4 Debit/Credit Card Fee: Amounts Added to the Hammer Price: BRK reserves the right to charge the debit/credit card fees imposed by the payment services companies. The rates will appear when bidding on bruun-rasmussen.dk and at the time of payment.

8 PAYMENT DEADLINE

8.1 The purchase price falls due after the hammer price has been determined, and then the buyer has eight days to pay BRK the purchase price.

9 PAYMENT METHODS

9.1 The payment can be made in the following ways:

- A: With debit/credit card (Dankort, Visa, MasterCard, Diners Club, China UnionPay and JCB) or cash (up to DKK 50,000 (approx. EUR 6,700)) in the saleroom or subsequently at one of BRK's locations.
- B: With debit/credit card (Dankort, Visa, MasterCard, Diners Club and JCB) via BRK's website on the buyer's personal page.
- C: By bank transfer into BRK's account with Danske Bank: 4183 4310970638 · Swift/BIC: DABADKKK · IBAN: DK4130004310970638.

10 VAT EXEMPTION, PAYMENT & DEPOSIT

10.1 Some buyers can choose which type of VAT should apply to the transaction. The choice has to be communicated to BRK no later than two working days after the purchase and cannot be changed subsequently.

- A: Businesses in Denmark registered for VAT can decide that the transaction is to be conducted in accordance with the rules for full VAT, see paragraph 7.1.2.
- B: Businesses registered for VAT in another EU Member State can be exempted from paying Danish VAT if it can be proved that the item has been transported to the foreign address that the buyer has registered with BRK and which is written on the invoice. In such cases, the VAT should be settled according to the rules applicable in the country where the buyer is registered for VAT. It is advisable to consult with the local authorities. The buyer can decide not to be exempt from regular VAT and instead pay Danish VAT on second-hand goods/full VAT.
- C: Buyers residing outside the EU can be exempted from Danish VAT if it can be proved that the item has been transported out of the EU. To the extent possible and for a fee, BRK can issue the necessary export documents for the customs authorities. The buyer may decide not to be exempt from regular VAT and instead pay Danish VAT on second-hand goods/full VAT.

10.2 Companies registered for VAT in another EU Member State and buyers residing outside the EU must deposit the Danish VAT on the amount invoiced with BRK until the export process has been completed in a documented, lawful fashion. If the export is undertaken by one of BRK's authorized forwarding agents, the VAT does not have to be deposited. See the list of authorized forwarding agents on bruun-rasmussen.dk.

11 OVERDUE PAYMENTS

11.1 If payment is made after a deadline, including the deadline specified in paragraph 8, interest on overdue payments will be charged and estimated in accordance with the Danish Central Bank's official lending rate + 8% per year on the amount due.

11.2 If the purchase price, including interest, has still not been paid ten days after the demand for payment has been made, BRK is entitled to seek the purchase price paid by making a set-off against the deposit/by drawing on the bank guarantee or to cancel the purchase.

11.3 If the purchase is cancelled, BRK is entitled to sell the item at a new auction and demand the costs and any difference between the new and the earlier hammer price (including the buyer's premium) covered by the defaulting buyer.

11.4 In addition to debt collection, BRK may seek recovery of all due claims (including costs) not paid in a timely manner in the following ways:

- A: Making the buyer cover the costs of selling items consigned to auction by or on behalf of the buyer. The sale can be conducted without regard to an agreed reserve price. Items consigned for auction cannot be collected as long as overdue debts are unpaid.
- B: Seizing the buyer's remaining balance with BRK, including the balance on the sale of items consigned by or on behalf of the buyer, regardless of whether such receivables derive from auction sales prior to or after the date of the buyer's default on the payment.

12 PICK-UP & COLLECTION

- 12.1 The title to a purchased item passes to the buyer when the full purchase price, including any interest and fees, has been paid, and only then can the collection of an item take place.
- 12.2 In connection with the collection of a purchased item, BRK reserves the right to demand satisfactory documentation that the person who wants to pick up the item is either the buyer himself/herself or authorized by the buyer to receive the item on his/her behalf.
- 12.3 The collection of certain weapons requires presentation of a valid weapons certificate. Items with such requirements are listed with the text: "The purchase of this item requires the presentation of a valid weapons certificate" in the catalogue and on bruun-rasmussen.dk.
- 12.4 Purchased items are stored after the auction at the buyer's expense and risk. Pick-up must take place no later than eight days after the last auction day.
- 12.5 If the item(s) is/are not picked up on time, the purchased items will be transported to a warehouse at the buyer's risk and expense. The transport costs are DKK 150 including VAT per item and the storage costs are DKK 150 including VAT per item for each week or part of a week. If an item is left unclaimed for an amount of time that results in the storage costs exceeding the value of the item, BRK will be entitled to, at the buyer's expense and risk and without regard to the reserve price, sell the item at an auction or privately. The buyer is still liable for the costs of transportation and storage not covered by such sale.

13 SHIPPING

- 13.1 If the buyer is unable to pick up the purchased item, BRK offers to pack and arrange delivery either by mail or by freight forwarder at the buyer's risk and expense. See paragraph 12.2 regarding identification.

14 EXPORT LICENSE

- 14.1 To ensure that Danish cultural heritage of vital importance remains in Denmark, the Danish Cultural Assets Commission can place an export ban on certain items. If the buyer wishes to export an item that is subject to an export ban in Denmark, the purchase will be cancelled and the Danish Cultural Assets Commission is obliged to acquire ownership of the item for the price obtained at auction. The buyer cannot raise any claims against BRK as a result of an export ban.
- 14.2 The CITES Convention's purpose is to stop the trade of items made of endangered species and flora. Items that are included in the CITES Convention, Appendix 1, can only be traded when a dispensation in the form of a CITES certificate has been obtained. BRK obtains the required CITES certificate from the Danish Nature Agency that allows trade and export to countries within the EU. Items that were produced before 1947 can, however, be freely traded within the EU without a certificate. In connection with export to other countries outside the EU, special rules may apply concerning the import, and the buyer is encouraged to consult the relevant local authorities about this issue. If the item falls under the CITES Convention, Appendix 1, it will appear in the description of the item on bruun-rasmussen.dk and with the symbol "🌿" in the catalogue.

15 DEFECTS IN THE PURCHASED ITEMS

- 15.1 The lack of conformity rules of the Danish Sale of Goods Act may apply. Below is a non-exhaustive excerpt of the buyer's remedies in regard to lack of conformity.
- 15.2 The buyer is entitled to cancel a purchase if the description contained significant errors that have led to a higher hammer price than a correct description would have resulted in. In such cases, the total purchase price will be refunded. The buyer cannot demand payment of interest on the purchase price or demand payment of any other expenses or losses.
- 15.3 A purchase cannot be cancelled and the buyer cannot demand a refund of the purchase price or raise any other claims against BRK if the description of the item is in compliance with paragraph 15.2. The same applies if evidence of forgery has required the use of scientific methods that were either not available at the time of sale, were excessively costly to use or led to the damage of the item in question.
- 15.4 Claims for a cancellation of a purchase must be notified to BRK when the buyer has discovered the fact that entitles the buyer to cancel the purchase. This notice, however, has to be given no later than two years after the final pick-up date according to paragraph 12.4. The item purchased must be returned to BRK in the same condition as it was on the day it was sold at auction. If these conditions are not met, the buyer loses the right to cancel the purchase and cannot claim a refund of the purchase price. The buyer is responsible for paying the costs associated with the return of the item.

16 OBJECTIONS & LIMITATIONS OF LIABILITY

- 16.1 BRK is aware that errors, technical difficulties and external abuse or disruptive influences may occur during the auction. Bidders cannot raise any claims against BRK as a result of such events.
- 16.2 The buyer is always responsible for the correct payment of VAT and other costs, fees etc. in accordance with Danish and foreign regulations.
- 16.3 Unless otherwise stated in these conditions of purchase, BRK may never be held liable for bidders'/buyers' operating loss, loss of profits, other indirect losses or consequential loss.

17 PRIVACY POLICY

- 17.1 It is important to BRK to ensure confidentiality and security regarding the bidder's/buyer's personal information. The privacy policy can be found on bruun-rasmussen.dk.

18 COMPLAINTS, DISPUTE RESOLUTION AND APPLICABLE LAW

- 18.1 BRK can always be contacted if the bidder/buyer has a complaint.
- 18.2 If the bidder/buyer is a consumer and a solution cannot be found, a complaint can be submitted to the Complaint Resolution Centre, Carl Jacobsen Vej 35, 2500 Valby, Denmark, if the conditions for such a complaint are met. The bidder/buyer can complain to the Complaint Resolution Centre on forbrug.dk. When filing a complaint the bidder/purchaser must disclose the e-mail address: kfst@kfst.dk.
- 18.3 In Denmark, disputes must be brought before the City Court of Copenhagen, but see paragraphs 18.2. The mandatory rules on jurisdiction apply to consumer interests.

Jesper Bruun Rasmussen, Auctioneer

The above is an English translation of the Danish version of the Conditions of Purchase. In case of a dispute, only the Danish version of the present Conditions of Purchase of Bruun Rasmussen is valid.

ADDRESSES

BRUUN RASMUSSEN AUCTIONEERS

COPENHAGEN – BREDGADE

BREDGADE 33
DK-1260 COPENHAGEN K
Tel +45 8818 1111
E-mail: info@bruun-rasmussen.dk

COPENHAGEN – SUNDKROGSGADE

SUNDKROGSGADE 30
DK-2150 NORDHAVN
Tel +45 8818 1111
E-mail: info@bruun-rasmussen.dk

COPENHAGEN – BALTIKAVEJ

BALTIKAVEJ 10
DK-2150 NORDHAVN
Tel +45 8818 1111
E-mail: info@bruun-rasmussen.dk

AARHUS

SØREN FRICHS VEJ 34 D
DK-8230 ÅBYHØJ
E-mail: aarhus@bruun-rasmussen.dk

FYN

NICK MESSMANN
Tel +45 8818 1232
E-mail: nic@bruun-rasmussen.dk

ONLINE AUCTIONS – SUPPORT

BRUUN-RASMUSSEN.DK
Tel +45 8818 1114
E-mail: support@bruun-rasmussen.dk

REPRESENTATIVES:

FRANCE & BELGIUM

DITTE HERBORG KROGH · PARIS
Tel +33 6 6185 4564
E-mail: dhk@bruun-rasmussen.dk

SOUTHERN FRANCE & LUXEMBOURG

PETER KOCH
Tel +45 4045 3403
E-mail: p.koch@bruun-rasmussen.dk

GERMANY

FINN MEESENBURG
Tel +45 8818 1233
E-mail: fme@bruun-rasmussen.dk

ITALY

JEANETTE IDA MØLLER · MILANO
Tel +39 340 053 9219
E-mail: j.moller@bruun-rasmussen.dk

SPAIN

VAGN ERIK KROGSØE
Tel +45 2445 1224
E-mail: vek@bruun-rasmussen.dk

KARIN K.J.V. FRIJS · MARBELLA

Tel +34 630 29 21 02
Fax +34 952 77 74 64
E-mail: k.frijs@bruun-rasmussen.dk

SWEDEN

PETER KLEBERG
Tel +46 (0) 721 777 291
E-mail: pek@bruun-rasmussen.dk

THAILAND

ANDERS NORMANN
Tel +66 818 177 273
E-mail: normann@bruun-rasmussen.dk

USA

RIKKE STORM · NEW YORK
Tel +1 917 930 5543
E-mail: rs@bruun-rasmussen.dk

BENEDICTE HALLOWELL

Tel and Fax +1 617 566 7333
E-mail: b.hallowell@bruun-rasmussen.dk

CONTACT DIRECTLY

KONTAKT DIREKTE

HOVEDNUMMER / MAIN NUMBER

Bruun Rasmussen Auctioneers +45 8818 1111

ADMINISTRATION

Jakob Dupont, CEO +45 8818 1081
dupont@bruun-rasmussen.dk

KUNDESERVICE / CUSTOMER SERVICES

kundeservice@bruun-rasmussen.dk +45 8818 1010
customerservices@bruun-rasmussen.dk +45 8818 1010

KOMMISSIONER / COMMISSIONS

Lise Winther Wobido +45 8818 1013
Anja Bering Hansen +45 8818 1028
bids@bruun-rasmussen.dk

BESTILLING AF KATALOGER / CATALOGUE REQUESTS

Kundeservice / Customer service +45 8818 1111

AUKTIONS RÅDGIVNING / AUCTION GUIDANCE

Franziska Kampmann +45 8818 1026
fka@bruun-rasmussen.dk

SHIPPING

shipping@bruun-rasmussen.dk +45 8818 1055

VURDERING OG INFORMATION / VALUATION AND INFORMATION

INDBOVURDERINGER / VALUATION AT YOUR HOME

David Utzon-Frank +45 8818 1221
duf@bruun-rasmussen.dk

Kasper Nielsen +45 8818 1121
kn@bruun-rasmussen.dk

Casper Behrendtzen +45 8818 1235
cab@bruun-rasmussen.dk

Hans Ruben +45 8818 1231
hru@bruun-rasmussen.dk

Ralph Lexner +45 8818 1161
rl@bruun-rasmussen.dk

BØGER / BOOKS

Lærke Bøgh +45 8818 1217
lb@bruun-rasmussen.dk

FRIMÆRKER / STAMPS

Christian Grundtvig +45 8818 1214
cg@bruun-rasmussen.dk

MØNTER / COINS

Michael Fornitz +45 8818 1201
mfo@bruun-rasmussen.dk

MODERNE DESIGN / MODERN DESIGN

Peter Kjølgaard Jensen +45 8818 1191
pkj@bruun-rasmussen.dk

Ole Ravn +45 8818 1192
olr@bruun-rasmussen.dk

MODERNE KUNST / MODERN ART

Niels Raben +45 8818 1181
nr@bruun-rasmussen.dk

Niels Boe Hauggaard +45 8818 1182
nbh@bruun-rasmussen.dk

PORCELÆN, GLAS OG ORIENTALSK KUNSTINDUSTRI / CERAMICS, GLASS AND ORIENTAL WORKS OF ART

Ralph Lexner +45 8818 1161
rl@bruun-rasmussen.dk

Charlotte Hviid +45 8818 1162
chv@bruun-rasmussen.dk

RUSSISK / RUSSIAN

Martin Hans Borg +45 8818 1128
mhb@bruun-rasmussen.dk

SMYKKER / JEWELLERY

Katrin Mikkelsen Sørensen +45 8818 1174
kms@bruun-rasmussen.dk

SØLV / SILVER

Amalie Hansen +45 8818 1194
amh@bruun-rasmussen.dk

TÆPPER / CARPETS

Henrik Schleppegrell +45 8818 1145
hsc@bruun-rasmussen.dk

VIN / WINE

Morten Stenør Larsen +45 8818 1207
msl@bruun-rasmussen.dk

VÅBEN / WEAPONS

David Utzon-Frank +45 8818 1221
duf@bruun-rasmussen.dk

ÆLDRE KUNST / FINE ART

Kasper Nielsen +45 8818 1121
kn@bruun-rasmussen.dk

Birte Stokholm +45 8818 1122
bst@bruun-rasmussen.dk

ÆLDRE MØBLER / FURNITURE

Anders Fredsted +45 8818 1142
afr@bruun-rasmussen.dk

Henrik Schleppegrell +45 8818 1145
hsc@bruun-rasmussen.dk

COMMISSION BIDS

KOMMISSIONSBUD

It is possible to leave commission bids if you can not be present at the auction yourself. This service is free of charge.

When leaving a commission bid, you are instructing our customer service to bid up to a specified amount on your behalf.

The situation can occur that another buyer has already bid the same as you were prepared to. Are you then willing to bid further? If not the lot will be sold to another buyer.

If you do not wish to exceed your bid then write "Max", for maximum, next to the amount. You can also allow us to raise your bid by approx. 15% or approx. 25%.

The hammer price may be higher or lower than the estimated price, so it is possible to buy below the estimate. Bruun Rasmussen will always buy at the lowest price possible, as if you yourself had been present at the auction.

All commission bids are strictly confidential.

Commission bids must be submitted no later than **24 hours** prior to the start of the auction.

HOW TO MAKE A COMMISSION BID:

Complete the commission form with all pertinent information.

Indicate the lot number.

Indicate the amount you are prepared to bid.

Should this amount be the absolute maximum, please write "Max" in the appropriate column.

You can also allow us to bid by up to approx. 15% or approx. 25% more by indicating so.

Sign the commission form and make sure that Bruun Rasmussen receives it **24 hours** prior to the start of the auction.

If the information should be insufficient, Bruun Rasmussen can abstain from bidding. Bruun Rasmussen can not be held responsible for error in bidding or failure to execute bids.

INTERNET:

Commission bids can be submitted via website bruun-rasmussen.dk directly from the page with the item you want to submit a bid for.

Deadline for submissions of bids via the website is **3 hours** prior to the start of the auction.

Submitted bids are shown under "Your bids" when you are logged in. Please contact technical support on +45 8818 1114 for questions about the registration and submission of bids on the website.

For additional information, please consult "Conditions of Purchase" §1.

TELEPHONE BIDDING:

Should you wish to bid at auction by telephone, please inform Bruun Rasmussen of your name and telephone number, as well as which catalogue numbers you are interested in, no later than **3 hours** prior to the start of the auction. You will then be contacted shortly before the relevant lot comes under the hammer, thereby allowing you to participate without being in the auction room yourself.

For additional information, please consult "Conditions of Purchase" §1.

Det er muligt at afgive kommissionsbud, hvis De ikke selv kan være til stede på auktionens dag. Denne service er gratis.

Når De afgiver en kommission, beder De vores kundeservice på Deres vegne byde op til et af Dem bestemt beløb i hammerslag.

Der kan opstå den situation, at en anden køber allerede har budt det beløb, som De ønsker at afgive. Er De da villig til at gå et bud højere eller er De indforstået med at nummeret sælges til anden side?

Ønsker De ikke at byde højere så skriv "Max" ud for beløbet. Er De i tvivl om hvor højt De vil byde, kan De hæve budet med op til ca. 15% eller ca. 25%.

Salgsprisen kan blive højere eller lavere end vurderingen, så der er også mulighed for at købe til under den angivne vurdering. Vor kundeservice køber altid så billigt som muligt til Dem, som havde De selv været tilstede på auktionen.

Alle kommissioner behandles strengt fortroligt.

Kommissionsbud skal være Bruun Rasmussen i hænde senest **24 timer** før auktionens start.

SÅDAN BYDER DE:

Udfyld blanketten kommissionsbud med alle oplysninger.

Angiv katalognummer.

Angiv beløbet De ønsker at byde.

Er dette Deres absolutte maximum bedes De anføre "Max" i kolonnen.

De kan også forhøje Deres bud med henholdsvis ca. 15% eller ca. 25%, ved at indikere dette i kolonnen.

De bedes underskrive kommissionsblanketten og sikre Dem, at Bruun Rasmussen modtager den senest **24 timer** før auktionens start.

Hvis Deres oplysninger ikke er tilstrækkelige, kan Bruun Rasmussen undlade at byde for Dem, ligesom Bruun Rasmussen ikke kan gøres ansvarlig for fejl ved budgivning.

INTERNET:

Kommissionsbud kan afgives på hjemmesiden bruun-rasmussen.dk direkte fra siden med den effekt, De ønsker at byde på.

Seneste afgivelse af bud via hjemmesiden er **3 timer** før auktionens start.

Afgivne bud kan ses på hjemmesiden under "Deres bud", når de er logget ind. Kontakt teknisk support på 8818 1114 for spørgsmål om registrering og budgivning via internettet.

For yderligere information, se "Købskonditioner", §1.

TELEFONBUD:

Såfremt De ønsker at byde pr. telefon, bedes De oplyse Bruun Rasmussen Deres navn og telefonnummer samt hvilke katalognumre, De ønsker at byde på, senest **3 timer** før auktionens start. De vil så blive ringet op kort før, den aktuelle vare kommer under hammeren, og De kan på denne måde deltage i auktionen uden selv at være til stede.

For yderligere information, se "Købskonditioner" på bruun-rasmussen.dk under "Guide".

COMMISSION BIDS

KOMMISSIONSBUD

BREDGADE

Skal være Bruun Rasmussen i hænde senest **24 timer** før auktionens start.
Must be submitted no later than 24 hours prior to the start of the auction.

AUKTION NR AUCTION NO: **870**

Navn Name: *

Adresse Address: *

Postnr./by City: *

Land Country: * Fax:

Tel: *

e-mail: CVR-nr. VAT No.:

Bank: Konto nr. Acct. No.:

Adresse Address:

Postnr./By City: Land Country:

Tel: Kontaktperson Contact:

Obligatoriske felter er mærket med en stjerne * *Mandatory fields are marked with an asterix **

Undertegnede giver hermed fuldmagt til Bruun Rasmussen Kunstauktioner A/S om på mine vegne at købe nedennævnte katalognumre så fordelagtigt som muligt, inden for det af mig anførte beløb, i hammerslag.
I hereby request that Bruun Rasmussen bid on my behalf on the following lots up at the prices indicated below.

Undertegnede har udfyldt ovennævnte med de ønskede oplysninger, samt har accepteret købskonditionerne.
The undersigned has supplied the required information and agrees to be bound by the conditions of purchase.

Signatur: * B.R. kunde-nr. Client No.:

Jeg ønsker at modtage salgsresultater på de emner jeg har budt på via email dagligt efter auktion
I wish to receive sales results on the items I have been bidding on via e-mail every day after the auction

på e-mail adressen on this e-mail address:

Katalog nr. Lot. No.	Beskrivelse Description	Bud kr. Bid DKK	Max	+15%	+25%

BRUUN RASMUSSEN KUNSTAUKTIONER A/S

Bredgade 33 · DK-1260 København K · Tel +45 8818 1111 · Fax +45 8818 1112 · bids@bruun-rasmussen.dk · bruun-rasmussen.dk

Fortsættes næste side *Please turn over*



AXEL SALTO

MASTER OF STONEWARE

25.2-17.9 2017



CLAY

KERAMIKMUSEUM
DANMARK
MUSEUM OF CERAMIC ART
DENMARK



Kongebrovej 42
5500 Middelfart
CLAYMUSEUM.DK

Foto: Ole Akhøj



Et udstillingsamarbejde mellem syv kunstmuseer /
A collaboration between seven art museums

HOVMOD/PRIDE: SKOVGAARD MUSEET / **VREDE/WRATH:** HORSENS KUNSTMUSEUM
GRÅDIGHED/GREED: HOLSTEBRO KUNSTMUSEUM / **BEGÆR/LUST:** RANDERS KUNSTMUSEUM
FRÅSERI/GLUTTONY: MUSEET FOR RELIGIØS KUNST
MISUNDELSE/ENVY: MUSE®UM / **DOVENSKAB/SLOTH:** GLASMUSEET EBELTOFT

www.aarhus2017.dk/da/de-syv-doedssynder

∧∧RHUS
—2017—
EUROPÆISK
KULTURHØVEDSTAD

**DE SYV
DØDSSYNDER**
// SEVEN DEADLY SINS

4.2-28.5 2017



M O D E R N