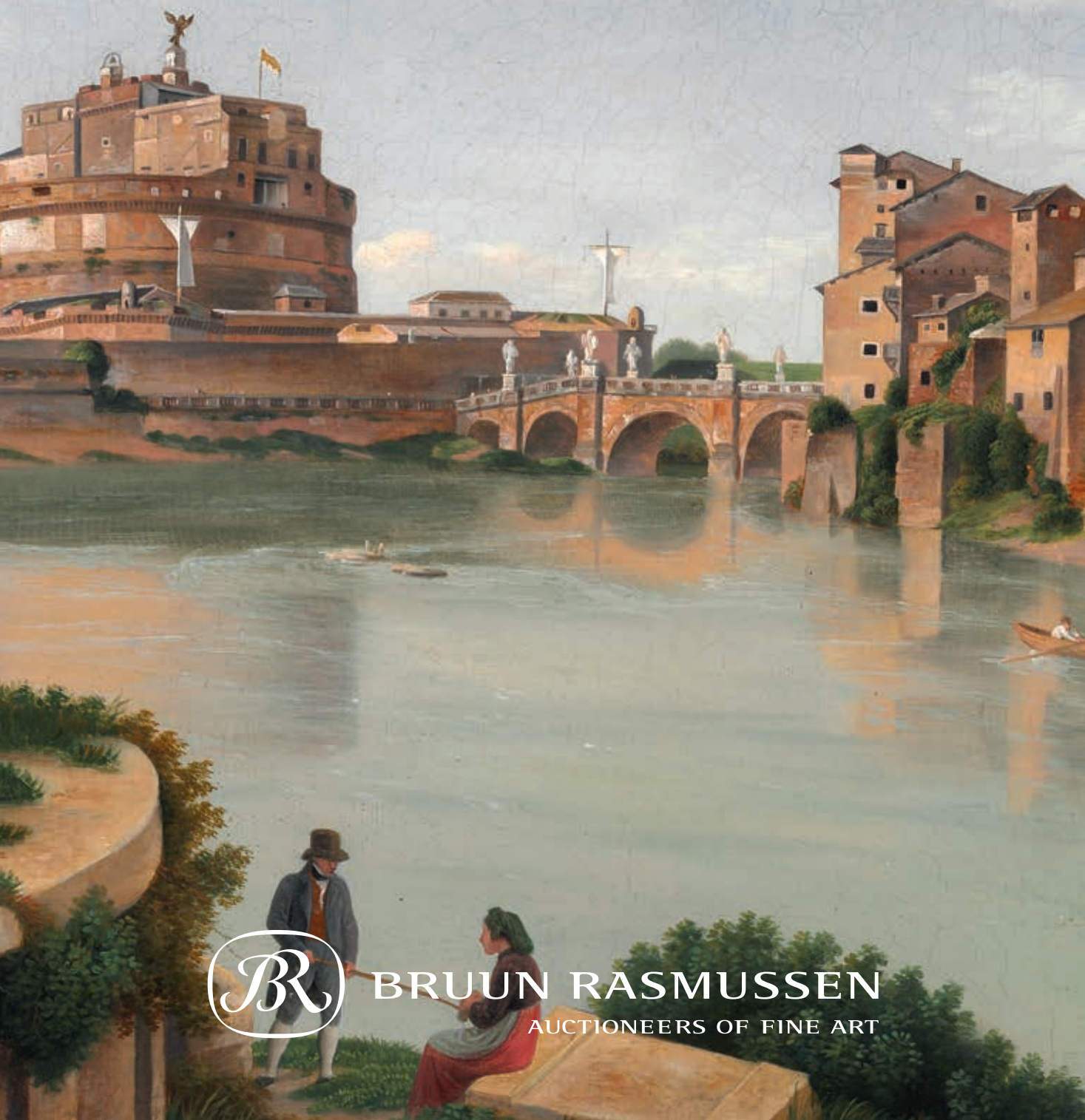


FINE ART + ANTIQUES

International auction 870



BRUUN RASMUSSEN
AUCTIONEERS OF FINE ART

FINE ART + ANTIQUES

International auction 870



AUCTION

28 February - 2 March 2017

PREVIEW

Thursday	23 February	3 pm - 6 pm
Friday	24 February	11 am - 5 pm
Saturday	25 February	11 am - 4 pm
Sunday	26 February	11 am - 4 pm
Monday	27 February	11 am - 5 pm

or by appointment



BRUUN RASMUSSEN

AUCTIONEERS OF FINE ART

Bredgade 33 · DK-1260 Copenhagen K · Tel +45 8818 1111
info@bruun-rasmussen.dk · bruun-rasmussen.com



Procula
7835

Lot 41

DAYS OF SALE

FINE ART + ANTIQUES

Tuesday 28 February
4 pm Paintings and drawings 1 - 127

FINE ART + ANTIQUES

Wednesday 1 March
2 pm Silver and ceramics 128 - 183
Furniture, clocks and bronzes 184 - 310
Oriental carpets 311 - 383

Thursday 2 March
4 pm Jewellery 384 - 565
7 pm Wristwatches 566 - 605

MODERN ART

Tuesday 7 March
4 pm Paintings and sculptures

Wednesday 8 March
2 pm Paintings and sculptures
Prints

NORDIC DESIGN

Wednesday 8 March
4 pm Silver
Ceramics

Thursday 9 March
4 pm Furniture, lamps and carpets

DEADLINE FOR CLAIMING ITEMS: WEDNESDAY 22 MARCH

Items bought at Auction 870 must be paid no later than eight days from the date of the invoice and claimed on Bredgade 33 by Wednesday 22 March at the latest. Otherwise, they will be moved to Bruun Rasmussen's storage facility at Baltikavej 10 in Copenhagen at the buyer's expense and risk. This transportation will cost DKK 150 per item VAT included, and storage will cost DKK 150 per item per week VAT included.



Lot 82

MALERIER + ANTIKVITETER

International auktion 870



AUKTION

28. februar - 2. marts 2017

EFTERSYN

Torsdag	23. februar	kl. 15 - 18
Fredag	24. februar	kl. 11 - 17
Lørdag	25. februar	kl. 11 - 16
Søndag	26. februar	kl. 11 - 16
Mandag	27. februar	kl. 11 - 17

eller efter aftale



BRUUN RASMUSSEN

KUNSTAUKTIONER

Bredgade 33 · 1260 København K · Tel +45 8818 1111
info@bruun-rasmussen.dk · bruun-rasmussen.dk

SPECIALISTS IN FINE ART AND ANTIQUES



Paintings, drawings and prints
Birte Stokholm
+45 8818 1122
bst@bruun-rasmussen.dk



Ceramics and Asian art
Ralph Lexner
+45 8818 1161
rl@bruun-rasmussen.dk



Paintings, drawings and prints
Julie Arendse Voss
+45 8818 1123
jav@bruun-rasmussen.dk



Ceramics, glass and Asian art
Charlotte Hviid
+45 8818 1162
chv@bruun-rasmussen.dk



Paintings, drawings and prints
Søren K. Holmstrup
+45 8818 1127
skh@bruun-rasmussen.dk



Silver and ceramics
Heidi Schophuus Jensen
+45 8818 1163
hsj@bruun-rasmussen.dk



Paintings and Russian art
Martin Hans Borg
+45 8818 1128
mhb@bruun-rasmussen.dk



Ceramics and Asian art
Alexandra Nilsson
+45 8818 1164
ani@bruun-rasmussen.dk



Jewellery and wristwatches
Katrin Mikkelsen Sørensen
+45 8818 1174
kms@bruun-rasmussen.dk



Silver and ceramics
Line Langkjær
+45 8818 1166
lla@bruun-rasmussen.dk



Jewellery and handbags
Lise Jacobsen
+45 8818 1175
lij@bruun-rasmussen.dk



Ceramics and Asian art
Torben Friis Møller
+45 8818 1165
tfm@bruun-rasmussen.dk



Jewellery
Julie Gram
+45 8818 1171
jgm@bruun-rasmussen.dk



Furniture and carpets
Henrik Schleppegrel
+45 8818 1145
hsc@bruun-rasmussen.dk



Wristwatches
Kristian Haagen
+45 8818 1168
kha@bruun-rasmussen.dk



Furniture, bronzes and clocks
Anders Fredsted
+45 8818 1142
afr@bruun-rasmussen.dk



International relations
Frederik Bruun Rasmussen
+45 8818 1003
fbr@bruun-rasmussen.dk



Director of sales
Kasper Nielsen
+45 8818 1121
kn@bruun-rasmussen.dk



Silver and branding
Alexa Bruun Rasmussen
+45 8818 1091
alexa@bruun-rasmussen.dk

AUKTIONSKALENDER

FINE ART + ANTIQUES

Tirsdag	28. februar		
	kl. 16	Malerier og tegninger	1 - 127

FINE ART + ANTIQUES

Onsdag	1. marts		
	kl. 14	Sølv og keramik	128 - 183
		Møbler, ure og bronzer	184 - 310
		Orientaliske tæpper	311 - 383
Torsdag	2. marts		
	kl. 16	Smykker	384 - 565
	kl. 19	Armbåndsure	566 - 605

MODERN ART

Tirsdag	7. marts		
	kl. 16	Malerier og skulpturer	
Onsdag	8. marts		
	kl. 14	Malerier og skulpturer	
		Grafik	

NORDIC DESIGN

Onsdag	8. marts		
	kl. 16	Sølv	
		Keramik	
Torsdag	9. marts		
	kl. 16	Møbler, belysning og tæpper	

SIDSTE FRIST FOR AFHENTNING: ONSDAG DEN 22. MARTS

Effekter købt på auktion 870 skal være betalt senest 8 dage efter fakturadatoen og afhentet i Bredgade 33 senest onsdag den 22. marts. I modsat fald bliver de transporteret til Bruun Rasmussens lager på Baltikavej 10 i Københavns Nordhavn for købers regning og risiko. Transporten koster 150 kr. pr. effekt inkl. moms, og opbevaringen koster 150 kr. pr. effekt pr. påbegyndt uge inkl. moms.



Lot 150

Opening Presentation & "Gallery Talks"

Preview, Bredgade 33

Thursday, 23 February

Opening Presentation

2:30 pm "Known and Unknown in the Danish Golden Age" by newly appointed museum director for the Hirschsprung Collection, Gertrud Oelsner (saleroom). The preview opens at 3 pm.

Friday, 24 February

"Gallery Talks"

- 2 pm "Introduction to the German Artist Günther Förg" by specialist in modern art, Niels Boe Hauggaard (1st floor, room 1.15)
- 3 pm "Regarding Ring: The Life & Art of the Danish Painter L.A. Ring" by specialists in fine art, Birte Stokholm and Julie Arendse Voss (1st floor)

Monday, 27 February

"Gallery Talks"

- 2 pm "Flora Danica Porcelain" by expert in older decorative art, Charlotte Hviid (1st floor, room 1.8)
- 3 pm "Poul Henningsen: The Early Lamps" by specialist in modern design, Ole Ravn (1st floor, room 1.15)

All the lectures will be in Danish

Åbningsforedrag & "Gallery Talks"

Eftersynet, Bredgade 33

Torsdag 23. februar

Åbningsforedrag

Kl. 14.30 "Kendt og ukendt i guldalderen" ved nyligt tiltrådt museumsdirektør Gertrud Oelsner, Den Hirschsprungske Samling (auktionssalen). Eftersynet åbner kl. 15.

Fredag 24. februar

"Gallery Talks"

- Kl. 14 "Introduktion til den tyske kunstner Günther Förg" ved ekspert i moderne kunst, Niels Boe Hauggaard (1. sal, rum 1.15)
- Kl. 15 "Rundt om Ring – kunstneren L.A. Rings liv og værk" ved eksperter i ældre kunst, Birte Stokholm og Julie Arendse Voss (1. sal)

Mandag 27. februar

"Gallery Talks"

- Kl. 14 "Porcelænet Flora Danica" ved ekspert i ældre kunsthåndværk, Charlotte Hviid (1. sal, rum 1.8)
- Kl. 15 "Poul Henningsen – de tidlige lamper" ved ekspert i design, Ole Ravn (1. sal, rum 1.15)



Lot 496



Lot 497

Welcome at the Year's First Auction in Bredgade

Like the current exhibition "L.A. Ring. Between Light and Darkness" at Ordrupgaard, we focus on the Danish painter L.A. Ring at the year's first auction in Bredgade. With 15 works by the painter we can present quite a range of his work - from snowy landscapes and village homes on Zealand to depictions of working life and the Italian plains. As the selection can testify, L.A. Ring was one of his era's most thorough realistic painters who objectively depicted the visible reality, yet his work often also contains a second layer of a more spiritual nature. The uniqueness of L.A. Ring was therefore that he managed to bridge the gap between two opposite directions in art - realism and symbolism. Take for instance the painting "Winter Landscape" from 1915, where the realistic depiction of snowdrifts, naked black trees and Roskilde Fjord is enveloped in a disquieting emptiness and silence (cat. no. 5). Five years earlier he painted the work "The Big Snowdrift. Sunshine", and here we move closer to the village environment, more specifically the village Baldersbrønde, where the artist lived at the time (cat. no. 10). We are also invited inside with two jewellers in the process of performing an age-old craft, and the work can almost be seen as a comment on the industrialization and modernity of the times (cat. no. 7). Like many artists during the 1800s, L.A. Ring turned his attention to Italy, where he stayed from 1893-95. Included in the auction we have one of his outdoor paintings from Terracina near Siena with women and children fetching water from a spring (cat. no. 9). Our art historian Julie Arendse Voss sheds more light on L.A. Ring's life and art on p. 16.

One of the auction's other artistic highlights is a study for the most famous of the Skagen paintings - P.S. Krøyer's "Midsummer Eve Bonfire on Skagen Beach" from 1906, which Skagen Museum describes as a tribute to the famous artist colony. In the study from 1903, the sparks from the bonfire fly around figures that include many well-known artists from the area - for instance the Ancher couple and Holger Drachmann (cat. no. 27). This time we can offer a particularly fine selection of paintings from the Danish Golden Age, including a couple of Martinus Rørbye's depictions from Italy. The work "Loggia on Procida" from 1835 is a testimony to

the Danish Golden Age's tightly constructed motifs with its use of the sea, the southern light, lemons and a bird in a cage (cat. no. 41). C.W. Eckersberg provides a view of the Tiber from Trastevere in the work "Castel St. Angelo" from 1818 (cat. no. 38) and a motif of an entrance to the church of Santa Maria in Aracoeli on Capitol (cat. no. 50). The artist is also represented with a historical painting depicting Christian IV (cat. no. 66).

A George III "Carlton House Desk" in light mahogany and gilded brass from approx. 1790 stands out among the auction's furniture (cat. no. 191). It is also rare to see tray tabletops from the Danish faience factory "St. Kongensgade" on the auction market, but this time we can present two beautiful specimens with the characteristic blue decorations. They carry the initials of Johan Pfau, who was head of the factory from 1726 to 1748. The tray tabletops come from a time when it became fashionable in the European upper class to consume hot beverages such as tea, coffee and hot chocolate. As these beverages grew more popular during the 1700s the need for a piece of furniture to place the hot cups and jugs on increased as well. The tray tabletops of earthenware were well suited for this purpose but were expensive to produce, and even back then they were considered showpieces (cat. no. 131 and 137).

No auction is complete without jewellery and wristwatches! This time we can present a private collection of jeweller Willy Jagert's unique handmade jewellery, which he produced for the A. Halberstadt company, an unusually large diamond ring at 6.47 ct. from the 1950s and a selection of timeless jewellery from famous jewellers such as Cartier, Tiffany & Co. and Bulgari (cat. no. 434). The men can look forward to a beautiful IWC red gold wristwatch of the model "Portugieser" with a perpetual calendar and an older Heuer sportswatch from the Autavia-collection that is currently in great demand (cat. no. 597 and 596).


Jesper Bruun Rasmussen



Lot 576

Velkommen til årets første auktion i Bredgade

I lighed med den aktuelle udstilling "L.A. Ring. Mellem lys og mørke" på Ordrupgaard markerer vi den danske maler L.A. Ring på årets første auktion i Bredgade. Med 15 værker kommer også vi vidt omkring hans virke – fra sjællandske sne-landskaber og almuestuer til skildringer af arbejdsliv og italienske vidder. Som udbuddet vidner om, var L.A. Ring en af sin tids mest konsekvente realistiske malere, der nøgternt skildrede den synlige virkelighed, men hans værker indeholder ofte også et andet lag af mere sjælelig karakter. Det særegne ved L.A. Ring er, at han formåede at bygge bro mellem de to umiddelbart modsatrettede kunstretninger – realisme og symbolisme. Tag fx værket "Vinterlandskab" fra 1915, hvor den virkelighedsnære skildring af snedriver, nøgne sorte træer og Roskilde Fjord er indhyllet i en urovækkende tomhed og stilhed (kat. nr. 5). Fem år tidligere malede han værket "Den store Snedrive. Solskin", og her bevæger vi os tættere på landsbymiljøet, nærmere betegnet Baldersbrønde, hvor kunstneren på det tidspunkt boede (kat. nr. 10). Vi bliver også inviteret med inden for hos to guldsmede i færd med at udføre et århundrede gammelt håndværk, og værket står nærmest som en kommentar til tidens industrialisering og modernitet (kat.nr. 7). Som så mange kunstnere i 1800-tallet vendte L.A. Ring blikket mod Italien, hvor han bl.a. opholdt sig fra 1893-95. Med på auktionen har vi et af hans friluftsmalerier fra Terracina nær Siena med kvinder og børn, der henter vand fra en kilde (kat.nr. 9). Vores kunsthistoriker Julie Arendse Voss belyser L.A. Ring i artiklen på side 16.

Et af auktionens andre kunstneriske højdepunkter er en studie til det mest berømte skagensværk – P.S. Krøyers "Sankt Hans Blus på Skagen Strand" fra 1906, som Skagens Museum selv betegner som en hyldest til den berømte kunstnerkoloni. I den udbudte studie fra 1903 fyger bålets gnister omkring figurerne, der tæller mange af de velkendte kunstnere på stedet – fx Ancher-parret og Holger Drachmann (kat.nr. 27). Denne gang byder vi tilmed på et særligt fint udvalg af malerier fra guldalderen, heriblandt et par af Martinus Rørbyes skildringer af Italien. Værket "Loggia på Procida" fra 1835 står

med havet, det sydlandske lys, citroner og en fugl i bur som et vidnesbyrd om guldalderens stramt konstruerede motiver (kat.nr. 41). Hos C.W. Eckersberg gælder det en udsigt over Tiberen fra Trastevere i værket "Castel St. Angelo" fra 1818 (kat.nr. 38) og et motiv med en indgang til kirken Santa Maria in Aracoeli på Capitol (kat.nr. 50). Kunstneren er også repræsenteret af et historisk motiv med Christian IV (kat.nr. 66).

En George III "Carlton House Desk" af lys mahogni og forgyldt messing fra ca. 1790 skiller sig ud blandt auktionens møbler (kat.nr. 191). Det er samtidig sjældent at se tebordsblade fra den danske fajancefabrik "St. Kongensgade" på auktionsmarkedet, men denne gang kan vi præsentere to smukke eksemplarer med de karakteristiske blå dekorationer. De bærer initialerne for Johan Pfau, der var leder af fabrikken fra 1726-1748. Tebordsbladene stammer fra en tid, hvor det kom på mode at indtage varme drikke som te, kaffe og chokolade hos den europæiske overklasse. I takt med den stigende popularitet i 1700-tallet opstod behovet for et møbel til at stille de varme kopper og kander på. Tebordsblade af fajance egnede sig til formålet, men var dyre at fremstille og blev også dengang betragtet som pragtstykker (kat.nr. 131 og 137).

Ingen auktion uden smykker og armbåndsure! Denne gang byder vi på en privat samling af juveleren Willy Jagerts unikke håndlavede smykker formgivet for forretningen A. Halberstadt, en usædvanlig stor diamantring på 6.47 ct. fra 1950'erne og et udvalg af tidløse smykker fra kendte juvelerer som Cartier, Tiffany & Co. og Bulgari (kat.nr. 434). Herrerne kan se frem til et smukt IWC-rødguldsarmbåndsur af modellen "Portugieser" med evighedskalender og et ældre Heuer sportsur fra Autavia-kollektion, der især nyder stor efterspørgsel i disse år (kat.nr. 597 og 596).


Jesper Bruun Rasmussen

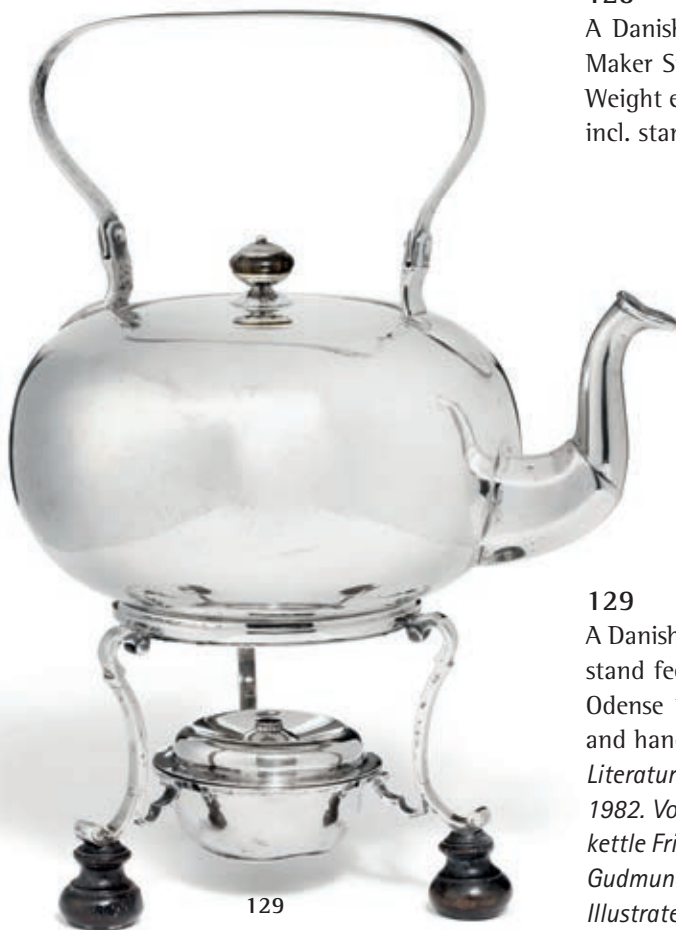


128

128

A Danish silver teapot and additional stand with burner. Maker Sivert Thorsteinsson, Copenhagen 1758 and 1766. Weight excl. burner 1456 gr. Teapot H. excl. handle 13 cm/ incl. stand 23 cm. (2)

DKK 15,000-20,000 / € 2,000-2,700



129

129

A Danish silver teapot with stand and burner, the finial and stand feet of turned black wood. Maker Friedrich Wissing, Odense 1745-1770. Weight in total 1133 gr. H. incl. stand and handle 29 cm.

Literature: Chr. A. Bøje: Danske guld og sølv smedemærker, 1982. Volume II, p. 121, here illustrated and described as tea kettle Friedrich Wissing c. 1760.

Gudmund Boesen and Chr. A. Bøje: Gammelt dansk sølv, 1968. Illustrated and referred to under no. 151.

DKK 15,000-20,000 / € 2,000-2,700



130

130

A rare Danish Baroque silver cruet stand, comprising four detachable spice cellars, a large sugarcaster, three smaller spice casters, a mustard pot with spoon, and Nøstetangen oil and vinegar glass flasks, one with silver mounts. Sugarcaster pricked with owner's initials CFS DAL. Stand and spice casters pricked with weight. Maker Friedrich Wissing, Odense 1755. The base, casters and spoon marked. Oil flask silver mounts, maker Peder Jørgensen, Odense 1785. Weight excl. flasks 2199 gr. H. 35 cm. (8)

A cruet stand is a small stand of silver, glass or porcelain, which holds containers for condiments. Typically these include spice casters, accompanied by mustard and an oil and vinegar container, resting on a base with a tall central handle with a ring on the top.

English cruet stands have a larger number of containers

than the Danish, sometimes 8 or more for the large variety of condiments used to give a special flavour to food. Cruet stands are rare in Denmark. First seen from about 1740, they go out of fashion again just 100 years later.

Litterature: Ada Polak, Gammelt norsk glass, Oslo 1953, catalogue no. 128, plate 61.

Provenance: Previously in dentist Dehnfelds Collection. ABR auction 400, 1979, lot 239, depicted. BRK auction 827, 2011, lot 214.

Similar cruet stand from Louis Foghts Collection, sold at ABR in 1960. Gudmund Boesen and Chr. A. Bøje: Gammelt dansk sølv (Old Danish Silver), depicted p. 222. DKK 80,000-100,000 / € 11,000-13,500





131

131

Store Kongensgade faience table-top tray, decorated in underglaze blue, rectangular with cut corners, centre with armorial for the family von der Nath surrounded by border, flowers and ornaments. Signed on the reverse with monogram for Johan Ernst Pfau/indistinct painter's mark. /47/5Rdl. (the standard price for a table-top tray seems to have been 5 Rdl). Pfau's period 1727-1749. Tray H. 6 cm. L. 68.5 cm. W. 50.5 cm. Set on a contemporary Rococo white and blue painted table with flowers and foliage, on cabriole legs. Table H. 75 cm. L. 73 cm. W. 55 cm.

The family von der Nath, originally of Dutch descent, settled in Schleswig-Holstein-Gottorp, where the brothers Theodor, Gerhard and Leonhard were all awarded the title of Count of the Empire in 1655. The Imperial Count Gerhard (1668-1740), now answering to the name of v. Dernath, was a Gottorpien lieutenant general and statesman. He won the favour of King Frederik IV and acted as a mediator between the warring parties during the Great Northern War. His son Gerhard (1700-1759) was vice-chancellor and president of the Exchequer in Gottorp.

DKK 200,000-250,000 / € 27,000-33,500



132

132

An early Dutch baluster maiolica jug decorated in blue, yellow and brown with stylised tulips and a cartouche in which the year 1558, pewter lid; possibly workshop of Adriaen Bogaert in Haarlem. H. 22 cm.

Provenance: Danish private collection

The first tulips were introduced to Europe in 1554 by Ogier Ghiselin de Busbecq (1522 in Comines – 28 October 1592). It is very rare to find tulips depicted on 16th century European ceramic.

DKK 30,000-40,000 / € 4,050-5,400

133

A Baroque silvergilt basin, embossed decoration, the centre depicting sea with Poseidon, nereide riding a dolphin, two swans and presumably Amphitrite, lobed rim with angel heads and grotesque masks. Apparently unmarked. C. 1625-1650. Presumably Augsburg. Weight 1694 gr. L. 52 cm.

DKK 60,000-80,000 / € 8,050-11,000



133



134

A small Danish Baroque silver coffee pot, handle and finial of carved wood. The reverse pricked with owner's initials LA KD and weight Vog 19 1/2 lod. Maker Daniel Planitz, Grenaa 1747-1776. Weight 286 gr. H. 13.5 cm.

DKK 12,000-15,000 / € 1,600-2,000



134



135

A small Danish Baroque silver coffee pot, of fluted baluster form, with wooden handle, the hinged domed cover with wood finial. The reverse engraved with owner's initials SB AC. Maker Asmus Fridrich Holling, Copenhagen 1744. Weight 373 gr. H. 19 cm. And a silver tray, fluted and shaped oval. Maker Hans Grønbech, Copenhagen 1746. Weight 103 gr. L. 17 cm. (2)

DKK 15,000-20,000 / € 2,000-2,700

135

136

A Danish Baroque silver coffee pot, of fluted baluster form, on circular foot, handle and finial of ivory. Maker Jean Marie Lenoir Copenhagen 1738. Weight 703 gr. H. 24 cm.

Literature: Christian A. Bøje: Danish Gold and Silver marks, volume 1. p. 142, referred to under the maker Jean Marie Lenoir, fluted coffee pot 1738.

Jean Marie Lenoir was one of the first Huguenots to arrive in Denmark in the 18th century.

DKK 20,000-25,000 / € 2,700-3,350



136





137

137

Store Kongensgade faience table-top tray, decorated in underglaze blue with a motif depicting two noblemen standing in a landscape and a shepherdess with sheep with ruins in the background. A border with foliage and stylized floral cartouches with lattice decoration framing the image. External surface decorated with a small straight-edged profile, where the bottom and sides meet. The reverse signed JP/5 2i. For Johan Pfau, painter's mark and 5 Rigsdaler. Tray H. 7 cm. L. 68.5 cm. W. 49.5 cm. Set on a contemporary Rococo table of dark lacquered oak and pine wood on cabriole legs with ends resembling hooves – apron with drawer. Table H. 79 cm. L. 68 cm. W. 50 cm.

Johan Pfau was Head of the Store Kongensgade faience factory 1726-1748.

Faience table trays were mainly used during the 1700s, where it became fashionable to drink coffee, tea and hot chocolate. The St. Kongensgade factory existed for 40 years and produced several beautiful table-top trays with different decorations. Literature: A. Øigaard: Fajancefabriken i Store Kongensgade. "They rarely crack during the firing and are slightly curved, slightly crooked, but for every table-top tray the cabinetmakers have produced a table, in a contemporary style of course, wherein the "tray" rests securely, supported in all the curved and crooked parts".

DKK 200,000-250,000 / € 27,000-33,500



138

138

A Royal Danish Porcelain Manufacturer set of potpourri jars with bas-relief ornamentation on the lid and foot, decorated in colours and gold by H.C. Ondrup. The sides features tromp l'oeil prints and drawings of Voltaire and Johannes Ewald respectively, rendered in grisaille. C. 1780-85. H. 45 cm. (2)

Literature: Bredo Grandjean: Kongelig Dansk Porcelæn, 1962. P. 129.

DKK 20,000 / € 2,700



139

139

A Danish Amager silver-gilt "hovedvandsæg" vinagrette, heart shaped with filigree-work, the hinged cover with crowned oval medallion, flanked by putti, the medallion with later owner initials I(P) EZ, the reverse with memorial, the body set with two medallions, oval foot with standing lions and balmhide. The reverse pricked with initials and date PJSP NCTD 1830. Maker Andreas Mortensen Møller, Copenhagen 1802-1846. Weight 115 gr. H. 11.5 cm. Later fitted red leather case with the initials IP EZ 1909 in gold.

Owner history: PJSP/NCTD 1830: Peter JanSen Petersen

(Petersminde, Store Magleby) and Niel Cornelius Tønnes-Datter. Their son and daughter in law: PPS/MCJ 1861: Peter PeterSen and Marchen Crilles Jansen. Their son and daughter in law: IP/EZ: Jacob Petersen and Emma, b. Zibrandtsen (Marienlyst, Store Magleby). Their daughter and son in law: MBC/GBC 1962: Marchen Neel, b. Petersen, and her husband, Gunnar Balslev Clausen (Skippergaarden, Store Magleby). Then their descendants to the present day.

Literature: Hovedvandsæg from Amager. Amager-museet 2001. Mentioned and depicted p. 31, no. 37.

DKK 15,000-20,000 / € 2,000-2,700



140

140

Set of eleven glasses of Silesian type, conical bowl engraved with flowers, birds and foliage, six mould blown stem on circular conical folded foot. 18th century. H. 16 cm. (11)

DKK 15,000-20,000 / € 2,000-2,700

141

"Rosenborg" sterling silver cutlery. Maker A. Michelsen, Copenhagen 20th century. Weight 1875 gr. (51)

Comprising:

12 dinner knives,

12 lunch knives,

12 dessert spoons,

12 coffee spoons,

1 carving fork,

1 serving spoon,

1 jam spoon

DKK 15,000-20,000 / € 2,000-2,700



141



142

142

A pair of Danish Louis XVI silver candlesticks, baluster stems on circular domed bases, pricked with owner's initials HCH ACW. Maker Jørgen Friis, Randers 1774-1790. Weight 807 gr. H. 22.5 cm. (2)

DKK 15,000-20,000 / € 2,000-2,700



143

143

A Nøstetangen faceted pear-shaped glass oil decanter, attached handle. Norway, c. 1760. H. 15.5 cm. *Literature: Ada Polak: Gammelt Norsk Glass, Oslo 1953, plate 61.*

Belongs to a silver plat-de-ménage.

DKK 15,000 / € 2,000



144

144

A French 18th century "Fiddle and Thread" silver cutlery, engraved with coat of arms, comprising 18 knives, 18 forks and 18 spoons. Maker Claude Lacroix, Paris 1783-84. Weight 3297 gr. L. 18-20.5 cm. In a matching box. *DKK 20,000 / € 2,700*

145

A set of three French silver boxes, one large and a smaller pair, cylindrical, the covers engraved with coat of arms. Maker Francois Lefevre, Paris c. 1775. Weight 564 gr. H. 7 and 8 cm. Diam. 7 and 13 cm. (3)

DKK 15,000-20,000 / € 2,000-2,700



145



146

146

"Saxon Flower" porcelain dinner service decorated in colours and gold with flowers and crowned monogram. Royal Copenhagen, 19th century first half. (90)

Comprising:

- 33 dinner plates, Diam. 25 cm;*
- 14 soup plates, Diam. 24 cm;*
- 14 lunch plates, Diam. 22 cm;*
- 14 deep dessert plates, Diam. 21,5 cm;*
- 2 large oval dishes, L. 45 cm;*
- 2 small oval dishes, L. 32 cm;*
- 2 round dishes, Diam. 32 cm;*
- 3 oval deep dishes, L. 22 cm;*
- 2 round bowls, Diam. 20 cm;*
- 2 gravy boats with dishes,*
- 2 covered dishes with putti.*

Provenance: Formerly Rosenørn-Lehn, Orebygaard manor on Lolland. DKK 25,000-30,000 / € 3,350-4,050



147

147

"Flora Danica" seven porcelain plates decorated in colours and gold with flowers. 3549. Royal Copenhagen. Diam. 25.5 cm. (7) DKK 20,000 / € 2,700



148

148

“Flora Danica” nine porcelain plates with pierced borders, decorated in colours and gold with flowers. 3554. Royal Copenhagen. Diam. 22.5 cm. (9)

DKK 25,000-30,000 / € 3,350-4,050



149

149

A pair of silver hurricanes, stems cast in the shape of figure in classical dress wearing turban, octagonal bases with elephant heads. Unidentified mark, probably silver hallmark. 20th century. Weight 4912 gr. H. 35 cm. Shades missing. (2)

DKK 15,000-20,000 / € 2,000-2,700

150

A porcelain elephant shaping a cigar beaker, decorated in colours wearing caparison bearing Frederik IX's crowned monogram, embellished with cylindrical tower and rider in the shape of a turban-clad Moor. The sides attached with Rhine stones. Model no. 519. Royal Copenhagen, 1953. H. 24 cm. L. 24 cm.

Sculpted in 1903 by Theodor Madsen to court jeweller A. Michelsen.

DKK 80,000-100,000 / € 11,000-13,500



150



151

151

"Flora Danica" large porcelain tureen and stand, decorated in colours and gold with flowers, handles in the shape of twisted twigs and repoussé flowers. 3560-3561. Royal Copenhagen. L. 39 cm.

DKK 30,000 / € 4,050



152



153

152

"Flora Danica" porcelain monteith, glass cooler, decorated in colours and gold with flowers and foliage. 3531. Royal Copenhagen. L. 33 cm.

DKK 30,000 / € 4,050

153

"Flora Danica" gilt sterling silver dessert cutlery with porcelain handles decorated in colours and gold with flowers, comprising six forks, six knives and six spoons. Royal Copenhagen and A. Michelsen. L. 19-20.5 cm. (18)

DKK 40,000 / € 5,400

154

A Danish Regence silver dish, of circular shape with fluted and moulded rim, engraved with count crowned coat of arms for the Danish noble family Danneskiold-Laurvig. The reverse engraved with number and indistinct weight No 7 W 4... Maker Ole Flores Wilcken, Copenhagen 1741. Weight 1840 gr. Diam. 39 cm. DKK 20,000-25,000 / € 2,700-3,350



154



155

155

A pair of Danish Louis XVI silver two-light candelabra, fluted baluster stems, embossed with flower garlands, circular domed bases, the detachable branches with central flower branches, flanked by two scroll leaf-clad arms, tulip-shaped nozzles. Bases and branches pricked with number 4 and 6 respectively and weight. Maker Andreas Røymand, Copenhagen 1776. Weight 2730 gr. H. 23/44 cm. (2) *DKK 150,000 / € 20,000*



156

156

A Porcelain vase, decorated in colours and gold with the racecourse Fælleden after H.G.F. Holm 1832, squared base. Royal Copenhagen c. 1835-1840. H. 41 cm.

A section of the Copenhagen Common, Fælledparken, known at the time as Fælleden, featured a 2,500-metre triangular racecourse with rounded corners. The two long sides followed the streets Øster Allé, Blegdamsvej and Nørre Allé. A royal pavilion was constructed on the side facing Nørre Allé, flanked by a number of covered grandstands with seating. Spectators on horseback or in carriages could line the other sides. The stand for the judges was situated more or less by the royal pavilion. The racecourse was first used on 7 and 8 September 1832 and captured the public attention. In the years to

follow the races were held according to the same pattern, i.e. over two days in early September with three or four races each day, under the leadership of the Duke of Augustenborg, who acted as judge. In the later years, stewardship was nonetheless handed to Prince Ferdinand. The races held on 10 September 1836 were the last horse races in Copenhagen to date. Holm's motif was probably issued in several copies. Engraver Rasmus Nicolai Nielsen rendered H.G.F. Holm's motif taken from "Hestevæddeløbene paa Nørrefælled 7-8. Septbr 1835" (The Horseraces at Nørrefælled 7-8 Sep. 1835).

Literature: Erik Hougsted, Fattig Holm, 1994. p. 275f.

DKK 15,000-20,000 / € 2,000-2,700

157

A French late 18th century silvered copper snuff box, of oval shape, mounted with six glazed miniature paintings, the cover and reverse with hot air balloon over Pont Neuf and town landscape, the sides with city prospects, the inside with two hinged compartements, set with mother-of-pearl plaques. H. 3 cm. L. 7.5 cm.

The first untethered manned hot air balloon flight took place on 21st of November 1783, in France. The flight lasted a total of 25 minutes in 100 meters height above Paris, and the balloon flew a distance of 9 km. In Denmark the first balloon flight took place on 27th of December 1783, but the first manned flight took place October 1, 1806 with ascent from Rosenborg drill ground and landing at Roskilde.

DKK 15,000-20,000 / € 2,000-2,700



157



157 detail



157 detail



158



159

158

"Flora Danica" 12 porcelain dinner plates, decorated in colours and gold with flowers. 3549. Royal Copenhagen. Diam. 25.5 cm. (12)

DKK 25,000-30,000 / € 3,350-4,050

159

"Flora Danica" porcelain ice dome and stand, the cover pierced in the form of leaves interspersed with medallions, decorated in colours and gold with flowers, the cover knob in the form of a tulip. 3538. Royal Copenhagen. H. 30.5 cm. Diam. 31.5 cm.

DKK 80,000 / € 11,000



160

160

Meissen porcelain centrepiece decorated in underglaze blue and gold, stem modeled with two putti, pierced basket of oval shape. No A49. Germany, last quarter of 19th century. H. 41 cm.

DKK 20,000 / € 2,700



161

161

Meissen Gardener porcelain couple decorated in underglaze blue and gold, each standing in Rococo costumes with flower baskets, on four-sided sculpted base with rocailles. No. B65 and 2868. Germany 19th century. H. 48 and 50 cm. (2)

Created by Schönheit 1767

DKK 30,000-40,000 / € 4,050-5,400



162

162

A large German silver soup tureen, gilt interior, of circular shape, embossed and applied decoration in the shape of ro-cailles, acorn and oak leaves, two leaf-clad handles, on domed base. Maker E. Schurmann & Co, Frankfurt c. 1890. Weight 2890 gr. H. 34 cm.

DKK 15,000-20,000 / € 2,000-2,700



163



163

Kosta "Odelberg Junior" crystal glass set, cup decorated with harlequin check and gold, on four-sided stepped foot. Sweden, 20th century. (48)

Comprising:

12 Champagne/red wine glasses (one base with minimal chip)

12 red wine glasses,

12 hock glasses with green cups,

12 sweet wine glasses DKK 15,000 / € 2,000

164

"Rosenborg" sterling silver cutlery for 12. Maker A. Michelsen, Copenhagen 20th century. Weight excl. pieces with steel 5462 gr. (149)

Comprising:

12 dinner knives,

12 dinner forks,

12 lunch knives,

12 lunch forks,

12 dessert spoons,

12 fish forks,

12 fish knives,

12 lobster forks,

12 fruit knives,

12 bouillon spoons,

12 cake forks,

12 coffee spoons,

1 sauce spoon,

1 salad set,

1 carving set. DKK 60,000-80,000 / € 8,050-11,000



165

165

Meissen porcelain centrepiece decorated in colours and gold with four dancing children, stem shaped as a palm tree, pierced bowl decorated with re-poussé flowers. No 2728. Germany, last quarter of 19th century. H. 32 cm.

Created by Kändler 1760.

DKK 15,000-20,000 / € 2,000-2,700



166

166

Meissen Art Nouveau porcelain figure "Woman with ball" decorated in colours and gold, standing in pale green dress on a round moulded base with a gilt relief border. Marked cross in underglaze blue and scratched number "Q 180" and impressed number 147. Painters number "17". Germany 1860-1924. H. 37 cm.

Created by the German sculptor Walter Schott.

DKK 10,000-15,000 / € 1,350-2,000



167

167

Meissen Art Deco porcelain mantle clock with two cherubs seated on cushions bearing the clock, clockface having Arabic numerals. The pendulum is shaped as a star, oblong base attached. Sword marked in underglaze blue. Germany, 1924-1935. H. 7 cm. L. 57/61 cm. 4th assortment.

Created by Paul Scheurich (1883-1945) in 1919.

Literature: Porzellan, Kunst und Design 1889 bis 1939.

Vom jugenstil zum Funktionalismus. Berlin, 1996.

Bröhan-Museum. 2. vol. P. 128. Tav. 107.

DKK 15,000-20,000 / € 2,000-2,700



168



169



170

168

"Flora Danica" gilt sterling silver cutlery with porcelain handles, decorated in colours and gold, comprising of six dinner forks and six dinner spoons. Royal Copenhagen, Georg Jensen and A. Michelsen. L. 21 og 21.5 cm. (12)

DKK 30,000-40,000 / € 4,050-5,400

169

"Flora Danica" three various porcelain bowls decorated in colours and gold with flowers. 3504, 3507 and 3510. Royal Copenhagen. Diam. 23 cm. L. 22.5 and 27.5 cm. (3)

DKK 15,000 / € 2,000

170

"Flora Danica" porcelain tureen and stand decorated in colours and gold with flowers, finial and handles in the shape of a twisted twig adorned with repoussé flowers. 3562. Royal Copenhagen. Dish Diam. 33 cm. Tureen Diam. 30 cm.

DKK 40,000 / € 5,400



171

171
 "Flora Danica" porcelain sauce boat and dish decorated in colours and gold with flowers. 3556 and 3524. Royal Copenhagen. Diam. 33 cm. (2)

DKK 18,000 / € 2,400



172



173

172

"Flora Danica" a pair of porcelain fruit baskets and one oval fruit basket, decorated in colours and gold, the sides pierced with repoussé flowers and leaves, handles in the shape of curving branches. 3534 and 3536. Royal Copenhagen. Diam. 21.5 cm. H. 9 cm. L. 25 cm. (3) *DKK 25,000 / € 3,350*

173

A French Louis XVI style sterling silver jardinière, shaped circular, with a moulded laurel top rim, raised on four legs with hoofs, applied oak leaf and laurel branches, mounted on four sided reddish marble base, with applied silver leaf decoration. French export mark after 1878. Silverplated liner marked Tetard Frères. France, early 20th century. H. 37 cm. *DKK 30,000 / € 4,050*



174

174

A large porcelain centrepiece, pierced basket on square, stair-shaped base, sides with medallions decorated with Saly's equestrian statue of Frederik V and Amalienborg Palace. Juliane Marie's mark. Royal Copenhagen. H. 42 cm.

DKK 15,000 / € 2,000



175



176



175

"Rosenborg" sterling silver cutlery. Maker A. Michelsen, Denmark 20th century. Weight excl. knives 4050 gr. (88)

Comprising:

6 dinner knives,
6 lunch knives,
12 dinner forks,
12 dinner spoons,
12 lunch forks,
12 dessert spoons,
12 children forks,
11 coffee spoons,
1 sauce spoon,
1 potato spoon,
1 serving spoon,
2 cold meat forks.

DKK 30,000 / € 4,050

176

A pair of Danish silver four-light candelabra, baluster stems, embossed and engraved with Rococo ornamentation, domed bases. Maker A. Michelsen, Copenhagen 1877 and 1879. Weight 2650 gr. H. 25/39 cm. (2)

DKK 40,000 / € 5,400



177

177

A pair of large Meissen porcelain seven light flower en-
crusted candelabra, each applied with flowers and fruit,
one with three putti playing either the lute, violin or flute
the other with putti with flower garland, raised on three
scroll feet. Stem painted with insects and butterflies, de-
tachable branches. Germany, late 19th century. Model no.
g 194. Impressed 123. H. 58 cm. (2)

After the model by E.A. Leutertiz

DKK 30,000-40,000 / € 4,050-5,400



178

178

Meissen "Four Elements" porcelain mantle clock, decorated in colours and gold, modeled with putti each representing the four elements water, air, earth and fire, with various attributes. Porcelain dial with Roman numerals, surrounded by a snake, numerous repressed flowers. Originally created mid 18th century. No 2172. Germany, end of 19th century and contemporary movement. H. 47 cm.

DKK 20,000-30,000 / € 2,700-4,050



179

179

A Danish silver jardinière, of oval shape, the sides with pierced decoration. Maker A. Michelsen, Copenhagen 1917. Weight 1476 gr. H. 15 cm. L. 42 cm.
DKK 15,000-20,000 / € 2,000-2,700

180

A Danish silver tureen and cover, of oval shape with two handles, decorated with gadrooning, round and pointed arched bands. Maker A. Dragsted, Copenhagen 1919. Weight 2654 gr. L. 42 cm.
DKK 20,000 / € 2,700

DKK 20,000 / € 2,700



180



181

A French crystal cut glass tableware, with diamond cuts. Baccarat, c. 1840. (208)

Comprising:

23 champagne flutes, H. 18 cm;

39 redwine glasses, H. 13 cm;

35 whitewine glasses, H. 11.5 cm;

35 water glasses, H. 8 cm;

21 schnapps glasses, H. 9 cm;

36 dessertwine glasses, H. 10 cm;

17 decanters, H. 27-29 cm. and

2 waterjugs, H. 18 cm.

Provenance: Earlier Rosenørn-Lehn, Orebygaard Manor on Lolland. DKK 25,000-30,000 / € 3,350-4,050

182

A large lightly hammered silver fish dish and cover, of oval shape. 20th century. Weight 3640 gr. L. 69 cm.

DKK 20,000-25,000 / € 2,700-3,350





183

183

A miniature "Aron Kodesh" torah ark, gilt cast iron and wood, front decorated with Magen David and foliage, door flanked by columns. Possibly Eastern Europe. 19th century. H. 39 cm. W. 23 cm. D. 6 cm.

DKK 10,000-15,000 / € 1,350-2,000

FURNITURE, CLOCKS
AND BRONZES

Wednesday 1 March 2 pm

Lot 184 - 310





184

184
JOHN PERCIVAL, WOOLWICH
 A George III ebonised table clock, gilded brass dial with corner ornaments, silvered dial, the arch with strike-silent and centre with calendar dial, the back plate richly engraved with floral ornaments. Signed 'John Percival, Woolwich'. Late 18th century. H. 50 cm. W. 29 cm. D. 19 cm.

DKK 15,000-20,000 / € 2,000-2,700



184

185
JAMES MACABE, LONDON
 A Regency mahogany table clock, arched top with brass mounting, movement with hour striking and Strike-Silent. Signed 'MaCabe, London'. England, early 19th century. H. 38 cm. W. 27 cm. D. 19 cm. *After the death of clockmaker James MaCabe in 1811, the compagny was contiunued under the same name by his sons until 1883,*

DKK 20,000 / € 2,700



185

186

JOHN ELLICOTT

b. London 1706, d. s.p. 1772

A George III gilt-brass mounted mahogany table clock, arched gilt brass dial with silvered chape ring, movement with hour striking and calendar. Signed to the centre 'John Ellicott, London', dial and backplate numbered '2529'. England, c. 1780. H. 50 cm. W. 30 cm. D. 21 cm.

DKK 50,000 / € 6,700



186



186

187

A brass universal equinoctial ring dial, engraved with Roman numerals, zodiac and scales. Unsigned. 18th century. Diam. 9 cm. *DKK 20,000 / € 2,700*



187



188



188

188

JOSEPH DAVIS, WAPPING DOCK
 A George II black painted and japanned longcase clock, arched top with three spears, square gilt brass dial with openwork ornaments, chapter ring with Roman and Arabic numerals, movement with calendar and minute diaposal. Signed 'Jos. Davis Wapping Dock'. England, early 18th century. H. 277 cm. W. 49 cm. D. 25 cm.
DKK 15,000 / € 2,000

189

RICHARD VICK

d. London c. 1750, active from 1702

A George II ebony veneer and ebonised table clock, square gilt brass dial with partly silvered chaptering showing Roman and Arabic numerals, movement with hour striking and calendar. Signed 'Rich. Vick. London'. England, first half of the 18th century. H. 40 cm. W. 27 cm. D. 17 cm.

DKK 20,000 / € 2,700



189



189



190

190

EMMY INGEBORG BRUN

b. 1872, d. 1929

"Mars after Lowell's Planiglob (1905)" sketched on paper in ink, coloured and varnished mounted on a black painted wooden stand, executed by Emmy Ingeborg Brun, Denmark, c. 1918. Diam. 14 cm. H. 29 cm. Supplied by two handmade pamphlets: "Generala Globo di la Planeto Marso facita segun la yarala globi da Percival Lowell, de 1894 - 1914" "Ingeborg Brun design 1918" and contemporary photos.

Provenance:

In the capacity of co-founder and president of the Danish Henry George Society Sophus Berthelsen was in 1918 given the globe as a present by Ingeborg Brun who herself was deeply intrigued by Henry George's thinking: "Free Trade..Free World..Free Men". - The globe has been inherited in the family.

DKK 60,000 / € 8,050





191

191

A George III blond mahogany and gilt brass mounted Carlton House Desk, attributed to Gillows of Lancaster, D-shaped back surmounted by shallow drawers set below a pierced brass gallery, the green leather surface with a reading mechanism above and three drawer frieze, ring turned legs ending in brass caps. England, c. 1790. H. 80 cm. W. 150 cm. D. 81 cm.

The U-shaped Carlton House desk is supposed to have been designed in the 18th century for the Prince of Wales, who later became George IV, by George Hepplewhite. It is named after Carlton House, which was at the time the Prince of Wales London residence.

The family owned English furniture making firm 'Gillows of Lancaster and London' was founded in 1730 by Robert Gillow (1704–1772) he expanded his furniture making activities to include the direct import of quality West Indian timbers especially the finest mahogany. Known designers of its time used Gillows to manufacture their furniture of high quality and is to be found in Royal collections and museums throughout the world.

DKK 250,000-300,000 / € 33,500-40,500



192



193



193

192

A George III mahogany breakfront library bookcase, profiled top above four glass doors enclosing adjustable shelves, the lower part with four paneled doors with carved rosettes, the right lower side of the bookcase with a small door behind which hide. London, late 18th century. H. 264 cm. W. 207 cm. D. 50 cm.

Provenance: Bought at Sotheby's London in 1997 lot 92. DKK 20,000-25,000 / € 2,700-3,350

193

A set of ten George III mahogany armchairs. Shield-shaped backs carved with leaves and flowers, inlay of satinwood in shape of a fan, curved arms, padded seats on square tapered legs. England, 18th century. (10)
The present dining chairs closely relate to a design by Hephlewhite illustrated in Christopher Claxton Stephens and Stewart Wittington, 18th century English Furniture, The Norman Adams Collection, p. 81. pl. 11.

DKK 50,000-75,000 / € 6,700-10,000

194

An English giltwood mirror with scrolling top centered by a flower vase, later facet cut mirror glass. 19th century, restored. H. 138 cm. W. 73 cm.

DKK 15,000 / € 2,000



194

195

A George III two-pillar dining table of mahogany, the table top with D-ends and two additional leaves on turned supports with downswept fluted legs. 18th century. H. 71 cm. L. 198 cm. L. with leaves 310 cm. W. 136 cm.

DKK 20,000-40,000 / € 2,700-5,400



195



196

196

A Chinese export padauk bureau with pak tong key plates and bail handles, fall front enclosing several small drawers and rooms for storage, the lower part with four large draws of which one marked with Chinese inscription. Second half of the 18th century. H. 112 cm. W. 107 cm. D. 60 cm. *Provenance: The bureau was bought in June 2006 at Bruun Rasmussen, auction no. 575, lot 850.*

DKK 20,000-30,000 / € 2,700-4,050

197

An Italian Rococo armchair, richly carved with foliage and ornaments, round drop-in seat and back. Mid 18th century.

Provenance: The armchair belonged to Prins Harald of Danmark (1876-1949), the younger brother of Christian X. DKK 8,000-12,000 / € 1,100-1,600



197



198

198

A large Italian Baroque silvered and painted portal with double door. Early 18th century. H. 267 cm. W. 167 cm.
DKK 50,000-75,000 / € 6,700-10,000



194

BRUUN RASMUSSEN BREDGADE AUCTION 870



199

A Narwhale tusk. *Monodon monoceros*.
Weight c. 5.951 gr. L. 260 cm

*Provenance: Seller's parents who lived in
Greenland. Imported to Denmark 1953.*

DKK 75,000 / € 10,000

199

200

A Swedish stone top and black painted oak and pinewood table,
rectangular Öland stone top above frieze with large drawers,
baluster shaped legs, joined by stretcher. Mid 19th century.
H. 80 cm. W. 201 cm. D. 80 cm. *DKK 30,000 / € 4,050*



200



201



201

201

A set of five Italian early Rococo armchairs, silvered and mecca varnished, each with arched high-back, padded arm supports with floral silk brocade, curved apron carved with foliage, cabriole legs with hoof feet endings. C. 1735. (5)

DKK 250,000-300,000 / € 33,500-40,500



202

202

A pair of French Louis XV armchairs, beechwood and needle point upholstery. Mid 18th century. (2)

DKK 15,000-20,000 / € 2,000-2,700

203

A large French Rococo walnut chimney piece, curved front carved with rocailles, C-scrolls and birds. Mid 18th century. H. 114 cm. W. 155 cm. D. 37 cm.

DKK 25,000 / € 3,350



203



204

204

PIERRE ROUSSEL

b. 1723, d. Paris 1782

A Louis XV floral marquetry and gilt bronze mounted commode, curved marble top. Stamped 'P. Roussel' and 'JME'. France, mid 18th century. H. 90 cm. W. 128 cm. D. 61 cm.

Pierre Roussel was a successful cabinetmaker in Paris. Among his grand later patrons was the Prince de Condé, who made considerable purchases for the Palais Bourbon and the Château de Chantilly between 1775 and 1780.

DKK 150,000 / € 20,000



205

205

LÉONARD BOUDIN

b. 1735, d. Paris 1807

A late Louis XV gilt bronze mounted tulipwood, amaranth and fruitwood marquetry occasional table, oval breché d'Alep marble top with openwork gallery, the frieze with drawer, on square sectioned cabriole legs joined by a concave-fronted oval under-tier, scrolling foliate sabots, stamped 'L. BOUDIN, JME'. France, third quarter of the 18th century. H. 72 cm. L. 54 cm. W. 41 cm.

Provenance: The late Knud Abildgaard collection. ABR auction 709/847, May 2002.

DKK 40,000-50,000 / € 5,400-6,700



206

206

A German Rococo freestanding giltwood and blue painted portal, arched ornamented top, curved pillars. Presumably Potsdam, mid 18th century. H. 252 cm. W. 167 cm. D. 35 cm. DKK 40,000 / € 5,400



207

207

A Louis XV marquetry commode with gilt bronze mounting, curved sides and front with floral and ornamental marquetry of fruitwood and walnut, profiled marble top. France, mid 18th century. H. 85 cm. W. 135 cm. D. 68 cm.

Provenance: The commode was bought at 'Rosenberg & Stiebel' in New York 1973.

DKK 300,000 / € 40,500



208



208

JOHAN PIETER KROESE

b. Wuppertal 1702, d. Amsterdam 1778

A Dutch Burr walnut longcase clock, gilt brass dial with open corner ornaments, chapter ring with Arabic and Roman numerals, matted centre with seconds dial and calendar aperture, arched top with moon disc in the foliate engraved arch, the case with arched moulded cornice and foliate fretwork panel, shaped trunk door with gilt-mounted lenticle, raised on ball feet. Signed 'J P Kroese, Amsterdam'. C. 1750. H. 240 cm. W. 51 cm. D. 28 cm. *DKK 20,000-30,000 / € 2,700-4,050*



209



209

A pair of English mahogany armchairs in the Chippendale style, each with arched backs, shield splat back with ornamental carvings, out-swept armrests, square seat above carved apron on cabriole legs with claw and ball endings. 19th century. (2) *DKK 30,000 / € 4,050*



210

210

An Italian Rococo giltwood console, curved marble top above apron carved with C-scrolls and openwork foliage, cabriole legs with claw and ball endings. Mid 18th century. H. 84 cm. W. 110 cm. D. 51 cm. *DKK 20,000 / € 2,700*



211

211

MATHIAS ORTMANN, ATTRIBUTED

b. 1692, d. Copenhagen 1757

A Danish Rococo giltwood, black and gilt lacquer bureau cabinet, decorated over-all with Chinese figures, landscapes, houses and floral sprays, arched moulded cresting centered by large cartouche carved with a dragon, pierced rocaille and flowers, above two portal shaped mirrored doors, the lower part with fall front revealing an interior fitted with curved drawers centred by a mirrored door, above three long curved drawers, on later giltwood sleigh feet. C. 1750, restored and parts renewed. H. 255 cm. W. 125 cm. D. 65 cm.

According to tradition the bureau cabinet originates from Hirschholm Castle, Denmark.

DKK 150,000-200,000 / € 20,000-27,000

212

A Norwegian Rococo gilt and black painted three seat sofa. Mid 18th century. H. 120 cm. L. 180 cm. D. 52 cm.

DKK 15,000-20,000 / € 2,000-2,700



212



213

213

A Danish Rococo painted tile top table, the top with 24 Dutch faience tiles from the city Harlingen, decorated in blue with biblical scenes. Mid 18th century. H. 77. cm. L. 85 cm. W. 58 cm.

DKK 20,000 / € 2,700



214

A Swedish Rococo rosewood and fruit wood marquetry commode with bronze handles and mounting, Öland stone top. Mid 18th century. H. 78 cm. W. 116 cm. D. 60 cm.

DKK 20,000-30,000 / € 2,700-4,050

214



216

215

A Swedish walnut Rococo cupboard with gilt bronze handles and key plates, arched profiled top, front with twin doors enclosing shelves, the lower part with two small drawers and two large drawers, later cabriole legs. Stockholm, mid 18th century. H. 234 cm. W. 146 cm. D. 56 cm.

DKK 30,000 / € 4,050



215



216

A set of twelve almost identical Swedish Rococo chairs, white painted, arched backs with individual shell and foliage carving and each with baluster shaped back spalt, curved drop-in seat, cabriole legs with claw and ball endings. Gothenburg, mid 18th century. (12) *DKK 100,000 / € 13,500*



217

217

A Swedish Rococo walnut and fruit wood parquetry commode, curved sides and front with three drawers, gilt bronze key plates and handles. Mid 18th century. H. 82 cm. W. 91 cm. D. 52 cm.

DKK 30,000 / € 4,050

218

A Swedish Rococo giltwood mirror, frame with mirror borders, carved with C-scrolls, foliage, shells and flowers. Mid 18th century. H. 155 cm. W. 64 cm.

DKK 20,000 / € 2,700



218



219

An unusual German Rococo marquetry cabinet, openwork giltwood top carved with C-scrolls and foliage, the upper part with glass sides and front enclosing three shelves of patinated wood, above flap enclosing hide, the lower part with three graduated enlarging drawers, the giltwood base with finely carved rocailles volutes. Presumably Berlin, mid 18th century. H. 232 cm. W. 114 cm. D. 63 cm.

DKK 150,000 / € 20,000

219

220

A Danish Rococo giltwood and walnut commode in the manner of Mathias Ortmann, bombé shaped with three drawers, gilt bronze mountings, later white marble top and giltwood base. Mid 18th century. H. 80 cm. W. 75 cm. D. 50 cm.

Provenance: Orebygaard Manor.

DKK 15,000-20,000 / € 2,000-2,700



220

221

A Swedish Rococo black painted table, curved apron with three drawers, cabriole legs. Stockholm, late 18th century. H. 76 cm. L. 172 cm. W. 86 cm.

DKK 40,000 / € 5,400



221



222

222

A Norwegian Rococo giltwood console with gray marble top, pierced apron carved with foliage, rocailles and C-scrolls, cabriole legs joined by stretcher. Mid 18th century. H. 77 cm. W. 87 cm. D. 50 cm.

DKK 50,000-60,000 / € 6,700-8,050

223

A pair of Danish Rococo armchairs, polished beechwood, each with curved back and seat adorned with foliage carvings and cabriole legs. C. 1760. (2)

Provenance: The Supreme Court lawyer Peter Uldall, 1743-1798, who was appointed defense of Queen Caroline Mathilde and J.F. Struensee during their trial.

Exhibited: The chairs has for years been exhibited as loans at Museum Vestfyn, Assens.

DKK 20,000-25,000 / € 2,700-3,350



223



224

224

A large German Baroque cupboard, walnut and oak, the top molded with carved female figure with sheaf and cornucopia, front with two doors divided by three pilasters richly carved with figures, foliage and cherub, the lower part with one large drawer raised on ball feet. Danzig, c. 1700. H. 223 cm. W. 205 cm. D. 80 cm. *DKK 30,000 / € 4,050*

225

A heavy fore and back plate for cavalry, both plates with double line decoration and marked with a crowned 'N', later stand is enclosed. Presumably Swedish, second half of the 17th century. H. 150 cm.

DKK 50,000-60,000 / € 6,700-8,050



225



226

226

A composite suit of armour, fore and back plate with simple line decoration and proff marks, 16th century, other parts later presumably from a pikeneer armour, later helmet. Total with stand H. 181 cm.

DKK 15,000-20,000 / € 2,000-2,700



227

227

A German sword with a fluted pommel, the grip bound with smooth and braided iron wire, large square slightly down turned guard with a ring, double edged blade faintly marked 'PO...'. 16th century. L. 93 cm.

Provenance: Goldsmith Kai Jacobsen - one of the founders of the Danish Arms and Armour Society.

DKK 30,000-40,000 / € 4,050-5,400

228

A small naval cannon on original painted oak carriage with iron mounts. 19th century. The barrel L. 85 cm. Calibre c. 53 mm.

According to tradition the cannon was used by Henry Morton Stanley (1841-1904) on the Congo River. A young Dane, Albert Christoffersen participated in the expedition and afterwards received the cannon and other supplies as a gift. He eventually brought the cannon back to Odense in Denmark, where he later gave it as a gift of gratitude to Harlald Busch, in whose family it has been since. "The fireking, as it was called, stod in the bow of a river canoe used on the whole expedition and mentioned in his travel descriptions (quote from a letter by Rigmor Busch dated 22/8 1953). Copies of letters comes with the cannon, but none definitely proves the history.

DKK 20,000 / € 2,700



228

229

A north German fully stocked brass mounted flintlock rifle, presumably made for a duke of Schleswig. The mounts are finely cast and chiseled, the lock inlaid with crowned 'CA' in silver, the pierced side plate with the same crowned monogram as the lock, the barrel with a flat back L. 87,5 cm. Calibre 18,5 mm. decorated on the entire length with ornaments. C. 1730.

Provenance: Goldsmith Kai Jacobsen - one of the founders of the Danish Arms and Armour Society. DKK 25,000 / € 3,350



230

A Danish iron mounted fully stocked flint lock hunting gun made by Valentin Marr (1696-1786), rounded lock marked 'VALENTIN MARR' and 'CPJHAGEN' beneath the battery spring, L. 93 cm. two stage barrel in calibre c. 16 mm with Valentin Marr's stamps in the Spanish manner above the powder chamber, the barrel is finely punch marked on its entire surface, horn-tipped wooden ramrod held by three pipes. c. 1770.

The Danish Arms and Armour Societies Yearbook 1973 p. 7 - 34.

DKK 20,000 / € 2,700



231

231

A Swedish Baroque walnut marquetry commode, curved bracket front with three drawers. Stockholm, first half of the 18th century. H. 89 cm. W. 100 cm. D. 60 cm.

DKK 40,000 / € 5,400



232



232

A pair of Swedish painted Rococo armchairs, curved backs carved with shells, out swept armrests, curved drop-in seats, cabriole legs. Stockholm, mid 18th century. (2)

DKK 30,000 / € 4,050

233

A Swedish Baroque table with black Komstad stone top, grey painted lower part, fort with one drawer, square baluster shaped legs joined by foot rests. 18th century. H. 82 cm. L. 130 cm. W. 70 cm.

DKK 60,000 / € 8,050



233



234

234

A Swedish Allmoge cupboard, blue painted and decorated with flower paintings, arched profiled top, front with two doors divided by attached carvings, each door with oval portrait showing Gusatv III and his queen Sophie Magdalena, dated 'Anno 1791', the lower part with rounded corners and a pair of doors. 18th century. H. 222 cm. W. 145 cm. D. 58 cm.

Allmoge is the vernacular word referring to folk art and furniture in Scandinavia. The materials and painted decoration used on this cupboard reflects to the area of Vreta By. Similar cupboard with similar carvings in the collection of The Nordiska museet in Stockholm.

DKK 50,000 / € 6,700



235

235

A large Baroque vitrine cupboard, black painted with arched top and front with two glass doors, behind which shelves, cabriole legs. 18th century and later. H. 228 cm. W. 124 cm. D. 41 cm.

DKK 30,000 / € 4,050



236

236

A painted Norwegian Rococo table carved apron, cabriole legs. Mid 18th century. H. 71 cm. W. 94 cm. D. 74 cm. *DKK 15,000 / € 2,000*



237

237

A carved and painted Baroque sculpture on later base, most likely John the Baptist. The Philippines, 18th century. H. 155 cm.

DKK 20,000 / € 2,700



238

238

Francis of Assisi, a carved Baroque sculpture of Balayong wood, later base. The Philippine, 18th century. H. 151 cm. DKK 30,000 / € 4,050

239

A Swedish Öland stone and black painted oak and pinewood table, front with later drawer, baluster shaped legs joined by foot rests. 18th century. H. 85 cm. L. 161 cm. W. 73 cm. DKK 30,000 / € 4,050



239

240

A Danish Rococo cupboard, blue painted, arched top above two panelled doors enclosing small drawers and shelves, cabriole legs carved with foliage. 18th century, later painted. H. 187 cm. W. 102 cm. D. 43 cm. DKK 25,000 / € 3,350



241

A Swedish white painted Rococo sofa with curved armrests and openwork foliate carvings. Mid 18th century. L. 213 cm.

DKK 30,000 / € 4,050





242



242

A pair of Swedish Rococo armchairs, painted, each with arched back carved with shells and ornaments, baluster shaped back spalt with keyhole, curved drop-in seat, cabriole legs joined by H-shaped stretcher. Mid 18th century. (2) *DKK 25,000 / € 3,350*

243

A Swedish stone top table, rectangular Öland stone top above black painted oak and pinewood lower part, front with drawer, baluster shaped legs, joined by stretchers. Mid 19th century. H. 82 cm. L. 109 cm. W. 80 cm. *DKK 20,000 / € 2,700*



243



244

244

A pair of Swedish grey painted commodes, each with imitated stone tops above carved borders, cut-off fluted corners and three drawers. Gustavian style, 19th century and later. H. 79 cm. W. 99 cm. D. 49 cm. (2) DKK 25,000 / € 3,350

245

A Swedish white painted bench carved with rosettes, round fluted legs. Gustavian style, late 19th century. H. 44 cm. L. 151 cm. W. 52 cm. DKK 12,000 / € 1,600



245

246

A Gustavian giltwood console, demi lune Öland marble top above red decorated and carved apron, round fluted legs joined by stretcher with acon final. Sweden, late 18th century. H. 84 cm. W. 82 cm. D. 41 cm.

DKK 30,000 / € 4,050



246

247

A pair of painted Louis XVI style bergères each with arched back and seat with cushion above carved apron, round fluted legs. France, late 19th century. (2) *DKK 20,000 / € 2,700*



247



248

248

A Gustavian rootwood and fruitwood marquetry commode with three bracket front drawers. Sweden, late 18th century. H. 90 cm. W. 115 cm. D. 60 cm.

DKK 20,000 / € 2,700



249

249

A large French Louis XVI begère, grey painted arched back, rounded seat with cushion and round fluted legs. Late 18th century.

DKK 20,000 / € 2,700

250

A pair of Gustavian giltwood mirrors with carved openwork bows, twin brass candle holders. Sweden, late 18th century. H. 65 cm. W. 40 cm. (2)

DKK 40,000 / € 5,400



250

251

A Gustavian freestanding giltwood table, later marble top above carved apron, turned tapering legs. Sweden, late 18th century. H. 76 cm. L. 100 cm. D. 59 cm.

DKK 25,000 / € 3,350



251

252

A French Empire gilt bronze mantel clock. Signed white enamel dial 'Gabriel Le Roy rue de Temple no 115 à Paris'.
C. 1805-10. H. 54 cm. W. 46 cm. D. 15 cm.

DKK 15,000-20,000 / € 2,000-2,700



252



253

253

French Empire mahogany commode with gilt bronze mounting and black Belgian granite top. Early 19th century. H. 89 cm. W. 123 cm. D. 57 cm.

DKK 18,000 / € 2,400



254

254

French Empire gilt bronze mantel clock, 'The Love Letter' model after Francois-Louis Savart, a young girl in a chair with a letter pigeon, the base with relief showing Apollo receiving a letter, white enamel dial. Signed 'Thomas á Paris'. C. 1815. H. 50 cm. W. 46 cm. D. 19 cm.

Literature: Hans Ottomeyer, 'Vergoldete Bronzen' Munchen, 1986, vol. 1, p. 377, pl. 5.15.12. DKK 40,000 / € 5,400

255

A pair of French late Empire walnut marquises, curved backs and armrests each with freestanding columns, seat with rectangular cushions. C. 1810-15. H. 87 cm. W. 86 cm. D. 53 cm. (2)

DKK 30,000 / € 4,050



255



256



256

CLAUDE GALLE, MODEL AFTER

b. 1759, d. 1815

A set of four French gilt bronze wall lights, the model was made for the dining room at Grand Trianon at Versailles, each with back pole as an arrow, four candle arms and cast with lion and Diana masks. 19th century. H. 64 cm. (4)

Literature: Vergoldte Bronzen, Hans Ottomeyer und Peter Pröschel, Klinkhardt & Biermann 1986. vol. II, p. 706. pl. 23.

Provenance: Hans Henning Schroder b. 1892, Consul General in Leningrad, 1930.

DKK 150,000-200,000 / € 20,000-27,000

257

A French Empire gilt bronze mantel clock, the clock adorned with the learning Alexander the Great, the dial with white enamel plaques, rectangular base with Aristotle teaching Alexander and in the background his parents. Paris, c. 1815. H. 52 cm. W. 39 cm. D. 16 cm.

Literature: Hans Ottomeyer, 'Vergoldete Bronzen' München, 1986, vol. 1, p. 349, pl. 5.6.6.

DKK 30,000 / € 4,050



257



258

258

South Italian red figured bail-amphora, decorated in black glaze, one side with man standing with stick, the other side with woman holding a large dish, above a border with waves. Italy, 4th century BC. H. 42 cm.

Provenance: Acquired in 1970s at ABR auction.

DKK 20,000 / € 2,700



259

259
ZUBER ET CIE

'Draperie Josephine' in white, four panel wallpaper mounted folding screen. France, second half of the 19th century. H. 220 cm. W. 65,5 cm. W. in total 262 cm.

DKK 75,000 / € 10,000



260



261

260

A pair of Swedish white painted commodes, each with imitated stone tops above carved borders, cut-off fluted corners and three drawers. Gustavian style, 19th century and later. H. 80 cm. W. 88 cm. D. 48 cm. (2)

DKK 25,000 / € 3,350

261

A Gustavian giltwood mirror. Sweden, late 18th century. H. 154 cm. W. 58 cm.

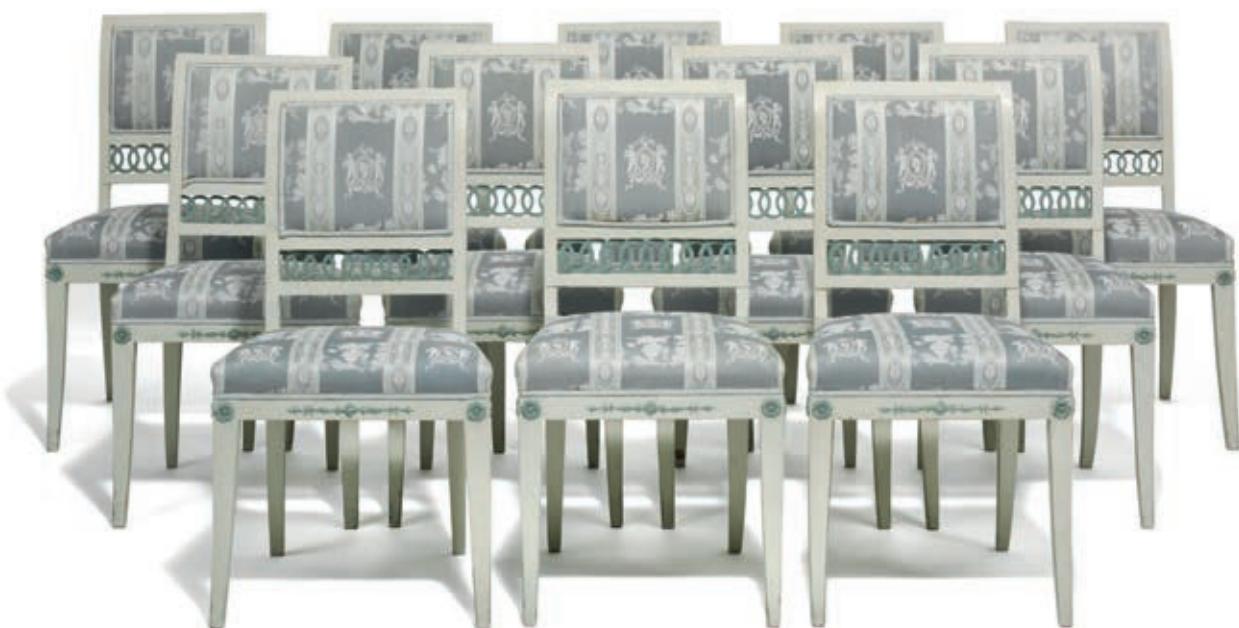
DKK 15,000 / € 2,000



262

262
 A pair of French gilt and patinated bronze fire dogs after the model by François Rémond. First half of the 19th century. H. 39 cm. W. 26 cm. D. 9 cm. (2)
 DKK 30,000 / € 4,050

263
 A set of twelve late Gustavian chairs, white painted with blue decoration. Sweden, late 18th century. (12)
 DKK 70,000-80,000 / € 9,400-11,000



263



264

264

'Voltaire' and 'Rousseau'. A pair of patinated bronze figures on square black marble bases. France, 19th century. H. 39 cm. (2)

François-Marie Arouet, 1694-1778, best known by his pseudonym Voltaire, was a French philosopher, author, playwright and social critic. Voltaire was one of the Enlightenment's great philosophers and a great champion of free speech and human rights.

Jean-Jacques Rousseau, 1712-1778, was a Swiss-French philosopher, writer and composer who has had a decisive influence on modern Western civilization.

DKK 20,000-30,000 / € 2,700-4,050

265

A pair of Empire gilt and patinated bronze and cut glass candlesticks, each with a winged putti, arms raised holding a candleholder, standing on a cut glass gilt bronze mounted baluster raised on a white marble square base. France, c. 1820. H. 32 cm. (2)

DKK 20,000 / € 2,700



265

266

A French Louis XVI parquetry and gilt bronze mounted corner cupboard, openwork gilt brass gallery above white marble top, curved front with twin doors enclosing shelves. Late 18th century. H. 105 cm. W. 76 cm. D. 57 cm.

Provenance: Colonel James Swan (1754-1830) based in Boston in the 18th and 19th centuries.

DKK 125,000 / € 17,000



266



267

267

EDMÉ - JEAN CAUSARD

b. c. 1720, d. 1780

A Louis XVI gilt bronze wall clock, white enamel dial, later movement. Marked 'Causard Hgr. Du Roy, Suviant La Cour'. France, late 18th century. H. 42 cm. W. 21 cm.

DKK 15,000 / € 2,000



268

268

A set of eight painted Gustavian chairs, curved backs with turned pillars, padded seats above carved apron, round fluted legs. Lindome, late 19th century. (8) *DKK 60,000 / € 8,050*

269

A Swedish extension table, white painted, four extra leaves with apron carved with rosettes, tapering fluted legs. Gustavian style, 19th century and later. H. 75 cm. Diam. 134 cm. L. total 368 cm. *DKK 30,000 / € 4,050*



269



270



270

A pair of Swedish crystal, blue glass and gilt brass framed chandeliers, each with six candleholders and one inner light. Mid 19th century. H. 117 cm. Diam. 86 cm. (2)

DKK 100,000 / € 13,500

271

A Swedish late Gustavian giltwood console with white marble top, carved with cornucopia, painted base. Early 19th century. H. 81 cm. W. 85 cm. D. 40 cm.

DKK 15,000-20,000 / € 2,000-2,700



271

272
A French Empire gilt and patinated bronze brûle-parfum. Early 19th century. H. 29 cm.
DKK 30,000 / € 4,050



272



273



273
A Russian Louis XVI brass mounted mahogany coin cabinet with fall front enclosing shelves for coins. Late 18th century. H. 153 cm. W. 90 cm. D. 45 cm.
DKK 25,000 / € 3,350



274

274

LOUIS-JACQUES VAILLANT

A large Empire gilt and patinated bronze striking mantel clock with Verde Antico marble base, an allegory of study in the shape of a young female figure in classical garb leaning on a pile of books, white enamel dial with inner concentric date ring. Signed Louis-Jacques Vaillant, Paris, c. 1810. H. 68 cm. W. 42 cm. D. 18 cm.

Literature: Hans Ottomeyer, 'Vergoldete Bronzen' Munchen, 1986, vol. 1, p. 349, pl. 5.6.8.

DKK 125,000 / € 17,000



275

275

A pair of Empire style columns, fruitwood with marquetry in shape of classical figures and ornaments, round marble tops and giltwood bases. 20th century. H. 101 cm. Diam. 40 cm. (2)

DKK 15,000-20,000 / € 2,000-2,700

276

A French Louis XVI style bergère with arched back, seat with cushion above apron, round fluted legs. 19th century.

DKK 15,000 / € 2,000



276



277

277

A late Gustavian giltwood console with white Carrera marble top, each side with carved cornucopia, black painted base. Sweden, early 19th century. H. 82 cm. W. 90 cm. D. 45 cm.

DKK 18,000 / € 2,400

278

An eight light German chandelier, gilt bronze and brass frame with eight candle arms, hung with prisms in chains and cascades with final blue glass bowl. Late 18th century and 19th century. H. 130 cm. Diam. 82 cm.

DKK 75,000 / € 10,000



278



279

279

A Swedish Empire style gilt and patinated bronze chandelier with six candle arms in the shape of eagle heads. Late 19th century. H. 70 cm. Diam. 52 cm.

DKK 10,000-15,000 / € 1,350-2,000

280

A pair of Swedish console tables, D-shaped tops above later decorated apron. C. 1820-30. H. 76 cm. W. 117 cm. D. 60 cm. (2)

DKK 15,000 / € 2,000



280



281

281

CHARLES-GUILLAUME MANIÈRE

d. Paris 1812

A Directoire gilt bronze and patinated bronze mantel clock, model after Claude Galle (1759-1815), white enamel dial, surrounded by the zodiac. Signed 'Manière Paris'. France, early 19th century. H. 48 cm. W. 22 cm. D. 14 cm.

Literature: Musée national du Château de Fontainebleau Catalogue des collections de mobilier, 1. Pendules et Bronzes d'ameublement entrés sous le Premier Empire, described and pictured p. 76 fig. 41. DKK 18,000-20,000 / € 2,400-2,700

282

A pair of French gilt and patinated bronze four-light figural candelabra, after model by Claude-Francois Rabiat. Both stamped 'Rabiat'. 19th century. H. 63 cm. (2) DKK 40,000 / € 5,400



282

283

A set of four late Gustavian chairs, each with curved back carved with leaf borders and rosettes, curved legs. Sweden, late 18th century. (4) DKK 50,000 / € 6,700



283



284

284

A signed Gustavian giltwood mirror carved with flowers and ornaments. The back marked 'MN' for Nicolas Meunier and stamped 'Stockholm Hall stempel 1786'. Sweden, late 18th century. H. 145 cm. W. 55 cm.

DKK 20,000 / € 2,700



285

285

A Gustavian giltwood mirror. Sweden, late 18th century. H. 162 cm. W. 66 cm.

DKK 15,000 / € 2,000

286

A large painted Gustavian sofa with curved sides carved with rosebuds and leaves, back with three cushions, six round fluted legs. Late 18th century. H. 93 cm. L. 208 cm. W. 76 cm.

DKK 20,000 / € 2,700



286



287

287

A pair of almost identical late Gustavian giltwood console tables, demi lune Carerra marble tops above acanthus leave carved apron, carried by griffins after the model by painter and interior designer Louis Masreliez and presumably made in the workshop of the royal sculptor Ernst Philip Thomans, standing on black painted bases. One marked 'No 1'. Stockholm, late 18th century. H. 82 cm. W. 71 cm. D. 35 cm. (2)

The griffin is known as a personal emblem of Duke Karl, who was the Duke of Södermanland where the griffin is part of the region's coat of arms. The painter and interior designer Louis Masreliez and cabinetmaker Pehr Ljung used the griffin in several contexts, for instance in the interior design and furniture surrounding the Duke. This can be seen in the guardroom and in the bedchamber of Rosersberg palace near Stockholm. The griffin eventually became a popular decorative element in most interior decor during the late Gustavian and Empire period in Sweden.

DKK 50,000 / € 6,700



288

288

JOSEPH CHRISTIAN LILLIE

b. Copenhagen 1760, d. Lübeck 1827

A pair of Danish Empire giltwood tables, one with marble and the other with imitated marble. C. 1810. H. 82 cm. W. 58 cm. D. 38 cm. (2)

Joseph Christian Lillie, also known as J.C. Lillie, was a Danish neoclassical architect and interior designer. His early career was in Denmark, where he is known for his interior designs and furniture production.

DKK 30,000 / € 4,050

289

A pair of giltwood mirrors adorned with vases, flowers and foliage. 19th century. H. 95 cm. W. 31 cm. (2)

DKK 30,000 / € 4,050



289



290

290

A pair of Gustavian white painted stools, curved sides and legs carved with foliage. Stockholm, late 18th century. (2)

DKK 25,000 / € 3,350



291

291

A set of four French Empire gilt bronze candelsticks, 'À tetes de génies', after the model by Glaude Galle (1759-1815), tapering six sided stems with three winged and classical draped figures, the round base is adorned with spreading fan and scrolling flowers. Paris c. 1805-1810. H. 31 cm. (4)

A similar pair after the model by Galle is in the collection of the Château de Fontainebleau (illustrated in Marie-France Dupuy-Baylet, L'Heure, le Feu, la Lumière: Les bronzes du Mobilier national 1800-1870, Editions Faton, Dijon, 2010, p. 82, catalogue no. 33.

DKK 100,000 / € 13,500



292

292

A French Louis XVI style white painted 'marquis' chair. 19th century. H. 88 cm. W. 90 cm. D. 66 cm.

DKK 15,000 / € 2,000

293

A Pair of French Louis XVI candlesticks, gilt bronze on concave white marble bases. Late 18th century. H. 21 cm. (2)

DKK 20,000 / € 2,700



293



294

294

A pair of painted Gustavian chairs. Stockholm, late 18th century. (2)

DKK 10,000 / € 1,350



295



295

LORENZ NIELSEN

b. 1739, d. 1821

A Danish Louis XVI bureau of oak with carved festoons and foliage, made by Lorentz Nielsen. Southern Jutland, late 18th century. H. 212 cm. W. 119 cm. D. 58 cm.

Lorentz Nielsen (1739-1821), Aabenraa, accredited Master 1774. He was one of the finest and most original cabinet makers during the Danish Neo-Classical Period from 1775-1800.

DKK 60,000 / € 8,050



296

296

A pair of large Empire gilt and patinated bronze candelabra, after the model by Pierre Philippe Thomire, the female figures, representing Victory, each holding aloft in their upraised arms six-branched candle holders, standing on a sphere placed on a column decorated with garlands and music instruments. Paris, 19th century. H. 103 cm. (2)

Literature: Vergoldte Bronzen, Hans Ottomeyer und Peter Pröschel, Klinkhardt & Biermann 1986. Bind I, p. 328. pl. 5.2.2.

DKK 150,000 / € 20,000

297

A pair of Charles X gilt bronze and cut-glass centre pieces. France, first half of the 19th century. (2) *DKK 50,000 / € 6,700*



298

An Italian Louis XVI painted console table with later imitated Sienna marble top. Late 18th century. H. 86 cm. W. 130 cm. D. 59 cm. *DKK 30,000 / € 4,050*





299

299

A large Gustavian giltwood mirror. Stamped 'Stockholm Hall Stempel 1790' and indistinctly marked 'IÅ'. Sweden, late 18th century. H. 180 cm. W. 78 cm.

DKK 15,000 / € 2,000



300

300

A pair of painted stools, each with round seat, round fluted legs. Sweden, late 18th century. (2)

DKK 15,000 / € 2,000



301

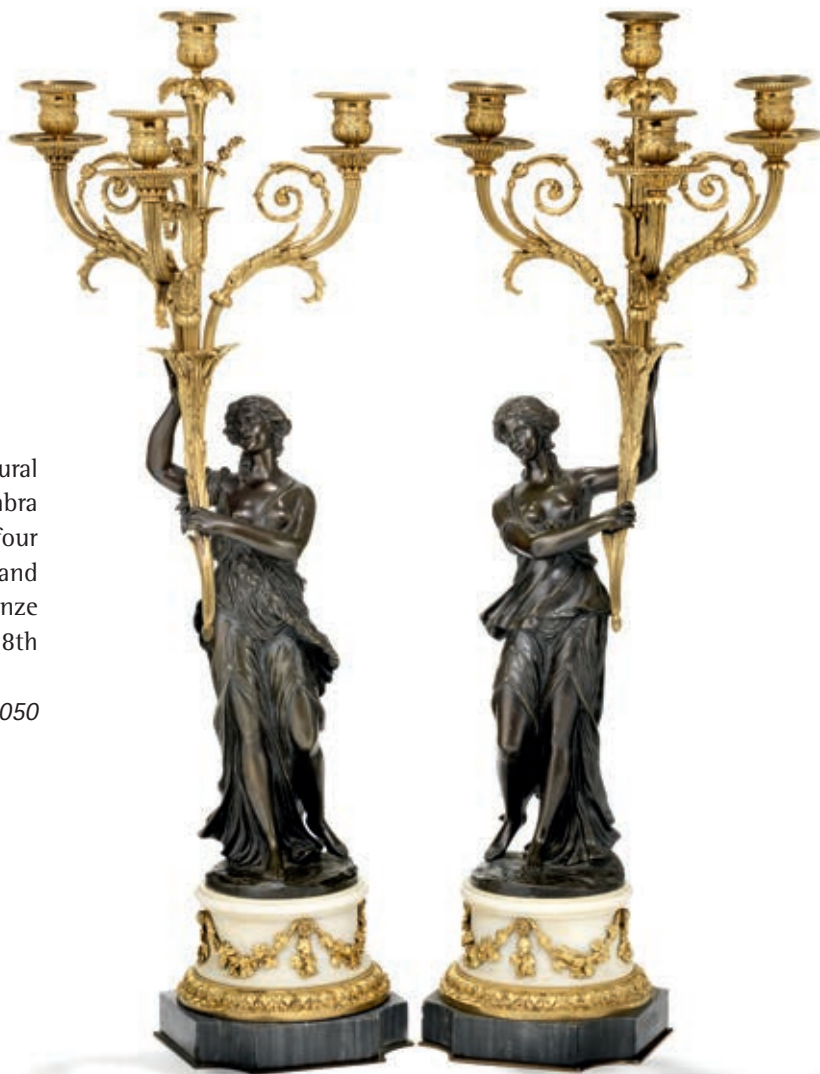
301

A Swedish Gustavian gilded, black- and greenpainted console, white marble top. Late 18th century. H. 88 cm. L. 97 cm. W. 51 cm. *DKK 30,000 / € 4,050*

302

A pair of large French Louis XVI figural gilt and patinated bronze candelabra each with female figure holding four light branches, cylindrical white and grey marble bases with gilt bronze flower festoon mounting. Late 18th or 19th century. H. 77 cm. (2)

DKK 60,000 / € 8,050



302



303

303

A pair of Louis XVI gilt bronze mounted cobalt blue cut glass vases, each side with acanthus leaves terminating into swan head holding a pendant, the gilt bronze base with a circular flower frieze on a marble plinth. France, Late 18th century. H. 22 cm. (2)

DKK 30,000-40,000 / € 4,050-5,400

304

A Swiss 'Black forest' musical chair, carved wood, the splat modelled as a standing bear among branches, the seat enclosing a musical movement, the underside stamped to each leg. Mid 20th century.

DKK 25,000 / € 3,350



304

305

A pair of Italian Carrera marble jardinieres with classical figures in relief, legs in the shape of lion monopodia. C. 1900. H. 100 cm. W. 100 cm. D. 33 cm. (2)

DKK 30,000-40,000 / € 4,050-5,400



305

306

A pair of North African metal lanterns decorated with coloured glass beads, mounted for electricity.
C. 1920. H. 140 cm. Diam. 55 cm. (2)

DKK 20,000 / € 2,700



306



307

GEORGE BAREAU (1866 - 1931)

'La Poesie' silverplated bronze figure signed 'Georges-Bareau' and inscribed 'F BARBEDIENNE' and 'RÉDUCTION MÉCANIQUE A. COLLAS BREVETÉ'. France, late 19th century. H. 60 cm. W. 52 cm. D. 22 cm. DKK 60,000 / € 8,050



307

308

PAUL SORMANI

b. Venice 1817, d. Paris 1877

A Louis XV style gilt bronze mounted, mahogany roll top desk, the upper part with openwork gallery and three drawers with mechanical lock, roll-top opening to reveal a compartmented desk interior, the lower part with three drawers with mechanical lock. The middle drawer with plaque marked 'Paul Sormani, r. Charlot, Paris'. France, late 19th century. H. 118 cm. W. 126 cm. D. 78 cm.

Literature: Denise Ledoux-Lebard: Les Ébénistes du XIX Siècle 1795-1889.

Provenance: Hans Henning Schroder b. 1892, Consul General in Leningrad, 1930.

DKK 100,000-150,000 / € 13,500-20,000



308





309

309

A large Danish giltwood and gesso mirror, adorned with flower vase flanked by winged female herms to the upper corners, mirrored angled border with cut stars. Made by Nordisk Kunst- $\&$ Mobil-Etablissement, Amager Torv 11 København K, late 19th century. H. 176 cm. W. 115 cm. *DKK 25,000 / € 3,350*

310

SEBASTIAN ÉRARD

b. Strasbourg 1752, d. Paris 1831

A giltwood and fruit tree harp in Neo Gothic style, with 46 strings and eight pedals. Plaque marked Sebastian Erard, Facteur de Pianos et Hapes du Roy $\&$ des Princesses, no. 1450. Original wooden transport box is enclosed. France, 19th century. H. 177 cm.

Sebastian Érad, instrument maker whose inventions and pioneering development of pianos and harps were epoch-making. From his factory on Rue Bourbon in Paris, he and his brother, Jean Baptiste Érad, invented the repetition mechanism among other things. During the Revolution, he fled to London where he made various improvements to the English mechanism. Following Érad's death, the business remained in the family, both in London and Paris.

DKK 30,000 / € 4,050



310



ORIENTAL CARPETS

Wednesday 1 March

Lot 311 - 383

Lot 330



311

311

A fine antique Senneh kilim, Persia. Medallion on a red field with herati pattern. C. 1900. 195 x 140 cm.

DKK 18,000 / € 2,400



312

312

A Kashan figural rug, Persia. Nader Shah at the throne surrounded by servants, people to amuse and entertain him, main border with cartouches with portraits. C. 1960. 213 x 135 cm.

DKK 8,000-10,000 / € 1,100-1,350



313

313

A Turkish carpet in Serapi design, all over pattern of entwined branches, flowers and foliage. C. 2000.
361 x 292 cm. *DKK 20,000 / € 2,700*



314

314

An antique Ushak carpet, Turkey. A classical medallion design in the characteristic color scheme (red, navy blue, light blue, green and yellow). Wool on wool. 18th century. 340 x 214 cm.

Literature: Nagel Auction, Stuttgart, Germany. Sale no. 686, Lot. 24.

Friederich Spuhler, 1987. Oriental Carpets in the Museum of Islamic Art, Berlin. Related examples pictured at P. 154 and 157.

DKK 40,000 / € 5,400



315

315

An antique Heriz carpet, North West Persia. Classical geometrical medallion design. Early 20th century. 379 x 300 cm. *DKK 40,000 / € 5,400*



316

316

A signed full silk Qum rug, Persia. Design of animals in landscape. Signed: Ghom Kashizadeh. C. 1 mio. kn. pr. sqm. C. 1960. 202 x 135 cm.

DKK 10,000-12,000 / € 1,350-1,600



317

317

A full silk Kashan rug, Persia. All over flower and foliage design on an ivory field. Second half 20th century. 220 x 153 cm.

DKK 30,000 / € 4,050

318

A Kashan carpet, Persia. Medallion design on a blue field. 1950-1960. 523 x 360 cm.

DKK 40,000 / € 5,400



318



319

319

A fine Chinese silk rug in classical Turkish Hereke style. Arch design with flower vase. C. 1 mio. kn. pr. sqm. C. year 2000. 276 x 185 cm.

DKK 20,000 / € 2,700



320

320

A full silk Isfahan rug, Persia. Medallion design on a golden field. Second half 20th century. 235 x 159 cm.

DKK 25,000 / € 3,350



321

321

A Kashan carpet, Persia. Classical medallion design on an ivory field. C. 1960. 384 x 263 cm.

DKK 20,000 / € 2,700



322

322

A signed Qum carpet, Persia. All over design of vases, lions, weapons, helmets ect. Partly with silk pile. Signed: On order of Torabi Nejad, year 1284 (Islamic lunar calendar). 333 x 234 cm.

DKK 10,000-12,000 / € 1,350-1,600



323



324

323

A Veramin carpet, Persia. Classical all over design of linked rosettes. 1950-1960. 330 x 214 cm.

DKK 18,000 / € 2,400

324

A Tabriz carpet, Persia. All over scrolling design of palmettes, entwined branches and foliage on a blue field. Fine shiny pile. First half 20th century.

412 x 305 cm.

DKK 80,000 / € 11,000

325



326



327

325

A signed Seirafian Isfahan rug, Persia. Classical medallion design on a red field. Knotted with kork wool on silk warps. C. 900.000 kn. pr. sqm. 156 x 104 cm. DKK 20,000-25,000 / € 2,700-3,350

326

A signed Seirafian Isfahan rug, Persia. Arch design with tree and bird motifs. C. 1.1 mio. kn. pr. sqm. Second half 20th century. 97 x 67 cm.

DKK 10,000 / € 1,350



328

327

A signed Seirafian Isfahan pictorial rug, Persia. Signed: Hossein Seirafian Isfahan Iran. Knotted with kork wool on silk warps. C. 1.1 mio. kn. pr. sqm. C. 1960. 110 x 170 cm. DKK 20,000 / € 2,700

328

A signed Tabriz carpet, Persia. All over design of animals in landscape. Signed: Khayam. C. 1950. 384 x 271 cm. DKK 25,000-30,000 / € 3,350-4,050



329

329

A Hereke full silk carpet, Turkey. Medallion on an ivory field with bird motifs, palmettes, flowers and foliage. Signed monogram. Unusual fine craftsmanship. C. 1.1 mio. kn. pr. sqm. 300 x 200 cm.

Rugs from the workshops in Hereke has long traditions within making silk rugs and is considered to be among the finest within Turkey. DKK 40,000 / € 5,400

330

A full silk Kashan carpet, Persia. An exceptional room size classical medallion design. C. 810.000 kn. pr. sqm. Second half 20th century. 488 x 370 cm.

Silk carpets in this size are not common in the market. DKK 175,000 / € 23,500



330



331



332



331

An Afghan Ziegler design carpet, design of large entwined branches and foliage in golden colors. 21st century. 561 x 371 cm. *DKK 25,000 / € 3,350*

332

A signed Brussels tapestry depicting the mythological scenery "Cupid at Vulcan's Forge". Signed monogram(not identified). Executed in wools and silks. 17th century. 330 x 270 cm.

DKK 60,000 / € 8,050



333

333

A Isfahan rug, Persia. All over design of palmettes, rosettes, bird and butterfly motifs. Signed: Iran Isfahan Steaki. C. 800.000 kn. pr. sqm. Highlights and outlines with silk pile. Knotted with kork wool on silk warps. Late 20th century. 255 x 165 cm. *DKK 25,000 / € 3,350*



334

334

A Isfahan rug, Persia. All over design of palmettes, rosettes and entwined branches. C. 900.000 kn. pr. sqm. Mid-20th century. 233 x 169 cm. *DKK 20,000 / € 2,700*



335

335

A Petag Tabriz carpet, Persia. 17th century design of linked rosettes with fighting dragons. Signed monogram. Early 20th century. 393 x 302 cm.

PETAG (Persian carpet stock company, established in 1911) was operating looms in Persia and very successfully reproducing 16/17th century Persian designs. These carpets are rare, of fine quality, highly appraised and sought after by collectors and interior designers.

DKK 90,000 / € 12,000



336



337



338



339

336

A signed Isfahan rug, Persia. Classical medallion design on a blue field. Signed: Iran Esfahan Entheshari. Knotted with kork wool on silk warps, outlines with silk pile. C. 1 mio. kn. pr. sqm. Second half 20th century. 237 x 154 cm.

DKK 10,000-12,000 / € 1,350-1,600

337

A Isfahan rug, Persia. Design of trees and animal motifs. Knotted with kork wool on silk warps. 1950-1960. 230 x 154 cm.

DKK 10,000-12,000 / € 1,350-1,600

338

A Tehran carpet, Persia. All over design of linked flowers and branches. 1930-1950. 328 x 208 cm.

DKK 8,000-10,000 / € 1,100-1,350

339

A Tabriz carpet, Persia. A fine weave medallion design on an ivory field of entwined branches, flowers and foliage. Outstanding quality. C. 1 mio. kn. pr. sqm. First half 20th century. 392 x 292 cm.

DKK 150,000 / € 20,000



340



341



342

340

A Karadja carpet, North West Persia. All over design of geometrical medallions. Early 20th century. 400 x 300 cm. DKK 10,000-12,000 / € 1,350-1,600

341

An antique Heriz carpet, North West Persia. Classical geometrical medallion design. 1900-1910. 392 x 311 cm. DKK 20,000 / € 2,700



343

342

An antique Shirvan prayer rug, Caucasus. Arch design with stylized flowers. 19th century. 144 x 116 cm. DKK 8,000-10,000 / € 1,100-1,350

343

An antique Shirvan prayer rug, Caucasus. 19th century. 152 x 110 cm. DKK 8,000-10,000 / € 1,100-1,350



344

344
An antique Moghan rug, Caucasus. Classical mem-
ling gül design. 1900-1920. 231 x 99 cm.

DKK 15,000/€ 2,000



345

345
An antique Kasak rug, Caucasus. A classical Chaili
design. Early 20th century. 219 x 126 cm.

DKK 18,000/€ 2,400

346
An antique Heriz carpet, North West Persia. A
highly decorative value room size carpet with
classical geometrical medallion design. 1890-1910.
586 x 310 cm.

DKK 125,000-150,000/€ 17,000-20,000



346



347



348



349

347

A Chinese carpet. Simple design of flowers on a light blue field. First half 20th century. 347 x 271 cm.

DKK 25,000 / € 3,350

348

A Peking carpet, China. Simple design with centre flower. Early 20th century. 345 x 278 cm.

DKK 40,000 / € 5,400

349

A Ningxia rug, North China. Characteristic Imperial five claw dragon design surrounded by wave border. Qing period(1644-1912). 217 x 127 cm.

DKK 50,000 / € 6,700



350

350

A Kashan souf silk rug, Persia. Arch design with columns, flowervase, hanging oillamps and bird motifs, centre field with metal threads in relief. C. 900.000 kn. pr. sqm. First half 20th century. 186 x 124 cm.

DKK 70,000 / € 9,400



351

351

A signed full silk Hereke rug, Turkey. Design of trees, bird motifs and main border with masks. Minor areas with metal threads in relief. Signed monogram. C. 810.000 kn. pr. sqm. Second half 20th century. 213 x 141 cm.

DKK 20,000-25,000 / € 2,700-3,350



352

352

A full silk Heriz rug, North West Persia. A fine medallion design on an ivory field. Early 20th century.
177 x 130 cm. *DKK 75,000 / € 10,000*



353



354



355

353

A pair of Kashan rugs, Persia. Medallion design on a red field. C. 1960. 203 x 132 cm. (2)

DKK 25,000 / € 3,350

354

A Kashan carpet, Persia. All over flower and foliage design on a red field. C. 1960. 410 x 314 cm.

DKK 20,000 / € 2,700

355

A fine signed Seirafian Isfahan rug, Persia. Classical medallion design. Knotted with kork wool on silk warps. Signed: Iran Isfahan Seirafian. C. 1.2 mio. kn. pr. sqm. C. 1960. 234 x 147 cm.

DKK 40,000-50,000 / € 5,400-6,700

356

A signed full silk Hereke rug, Turkey. An extremely fine weave medallion design surrounded by bird motifs. Unique craftsmanship and silk quality. Signed: Jiran (and signed monogram). C. 2.56 mio. kn. pr. sqm. Second half 20th century. 129 x 99 cm.

DKK 35,000 / € 4,700



356



357



358



359



360

357

A full silk Hereke rug, Turkey. Medallion design. Signed monogram. C. 1 mio. kn. pr. sqm. Late 20th century. 205 x 130 cm. *DKK 25,000 / € 3,350*

358

A full silk Hereke rug, Turkey. Design of flowers on an ivory field. Signed monogram. C. 1.2 mio. kn. pr. sqm. Late 20th century. 155 x 105 cm. *DKK 18,000 / € 2,400*

359

A rare signed antique full silk Senneh rug, Persia. Classical all over herati design. Signed/dated/numbered: "Ghali Seid Ghani" followed by indistinct numbers. C. 950.000 kn. pr. sqm. Early 20th century. 190 x 134 cm. *DKK 60,000 / € 8,050*

360

A signed Isfahan rug, Persia. Medallion on an ivory field. Knotted with kork wool on silk warps, outlines with silk pile. C. 900.000 kn. pr. sqm. Second half 20th century. 193 x 128 cm. *DKK 14,000 / € 1,900*



361



362



363



364

361

A Nain rug, Persia. Medallion design. C. 750.000 kn. pr. sqm. C. 1950. 224 x 139 cm.

DKK 10,000-12,000 / € 1,350-1,600

363

A Qum carpet, Persia. Centre rosette surrounded by large foliage. C. 1960. 330 x 230 cm.

DKK 20,000 / € 2,700

362

A Isfahan rug, Persia. Classical medallion design. Knotted with kork wool on silk warps. C. 1 mio. kn. pr. sqm. 1950-1960. 246 x 145 cm.

DKK 15,000 / € 2,000

364

A fine weave signed Seirafian Isfahan carpet, Persia. A large, high quality, medallion design example knotted with kork wool on silk warps. Signed: Iran Isfahan Seirafian. C. 1.15 mio. kn. pr. sqm. C. 1950. 310 x 212 cm.

DKK 75,000-100,000 / € 10,000-13,500



365

365

A dated Azerbaijan rug, Caucasus. Classical 17th century Azerbaijan Kuba palmette design. Unreadable dating, C. 1890-1910. 316 x 166 cm.

DKK 35,000 / € 4,700



366

366

An antique Beshir main carpet, Turkmenia. All over herati design with a centre rosette. 19th century. 335 x 148 cm.

DKK 15,000 / € 2,000



367

367

A Karadja carpet, North West Persia. A highly decorative geometrical medallion design. Early 20th century.
490 x 320 cm. *DKK 100,000 / € 13,500*



368

368

A pair of North West Persian runners, all over stylized flower design. Knotted on wool warps. 1930-1940. 581 x 112 cm. 560 x 114 cm.(2) DKK 40,000 / € 5,400

369

A Tabriz carpet, Persia. All over design of palmettes, rosettes and foliage on a red field. Mid-20th century. 548 x 372 cm.

DKK 70,000 / € 9,400



369



370

370

An antique Shirvan rug, Caucasus. Compartment design with hooked ornaments surrounded by calyx-and-leaf main border. 1890-1910. 315 x 124 cm.

DKK 25,000 / € 3,350



371

371
A Chinese carpet. Design of centre rosette on a golden
field of flowers. Early 20th century. 410 x 310 cm.

DKK 40,000 / € 5,400



372



373

372

A Kashan Mohtashem rug, Persia. Classical medallion design. 1930-1940. 198 x 131 cm.

DKK 25,000 / € 3,350



374



375



376

373

A full silk Kashan rug, Persia. Arch design with trees, flowers and foliage. First half 20th century. 192 x 126 cm. DKK 20,000 / € 2,700

375

A Kerman figural rug, Persia. Depicting a historic legend. First half 20th century. 210 x 138 cm. DKK 25,000 / € 3,350

374

A Signed Nain carpet, Persia. Design of trees on a blue field. Signed: Iran Nain Pahlevan Safaie. C. 1 mio. kn. pr. sqm. Late 20th century. 265 x 173 cm. DKK 12,000-15,000 / € 1,600-2,000

376

A Heriz carpet, North West Persia. Geometrical medallion design. Early 20th century. 435 x 360 cm. DKK 60,000 / € 8,050



377

377
A Karabagh rug, Caucasus. Design of vertical stripes with botehs. Early 20th century. 300 x 130 cm.
DKK 18,000/€ 2,400



378

378
An antique Karabagh/Daghestan rug, Caucasus. All over design of hooked ornaments in various colors. 1900-1910. 272 x 127 cm. DKK 18,000/€ 2,400



379

379

A Bidjar carpet, Persia. All over Garus design of entwined branches. A rare square size. Early 20th century.
340 x 315 cm. *DKK 50,000 / € 6,700*



380

380
American carpet, all over flower design on a black field. Loop technique. Most likely American, mid-20th century. 408 x 293 cm. DKK 30,000 / € 4,050



381

381

A Spanish medallion carpet, knotted technique. Mid-20th century. 485 x 453 cm.

DKK 60,000 / € 8,050



382

382

An antique Karabagh runner, Caucasus. Design of "Sunburst" ornaments. Early 20th century.
290 x 88 cm. *DKK 15,000 / € 2,000*



383

383

A Khotan carpet, East Turkestan. Classical all over pomegranate design. 20th century.
357 x 173 cm. *DKK 20,000 / € 2,700*

INDEX

A

A. Lange & Söhne	583, 603, 604
Achenbach, Andreas	48
Als, Peder	113
Ancher, Anna	24, 36
Ancher, Michael	21, 25, 28
	29, 30, 34, 35
Audemars Piguet	599

B

Bloch, Carl	89
Boucheron	553
Boudin, Léonard	205
Brascassat, Jacques Raymond, attributed to	111
Brendekilde, H. A.	104
Brun, Emmy Ingeborg	190
Bulgari	478, 479, 481, 501, 542

C

Cartier	390, 391, 392, 398, 399
	409, 411, 418, 419, 454
Catchpole & Williams	444
Causard, Edmé-Jean	267
Chopard	407, 408, 520
Christensen, Lina	477

D

d'Agar, Jacob	115
De Bethune	601
Ditzel, Nanna	503
Dorph, Anton	59
Drachmann, Holger	22, 37
Dragsted, A.	447
Dreyer, Dankvart	77
Duntze, Johannes	71

E

Eckersberg, C. W.	38, 50, 63, 66, 67
Eckersberg, C. W., attributed to	62
Ekvall & Rosgaard	476, 511
Ellicott, John	186
Èrard, Sebastian	310
Exner, Julius	15, 16, 17, 18, 19, 20

F

Fischer, Paul	32, 60, 61, 79
	80, 81, 82, 85, 86
	87, 88, 90, 97, 100
Friedlænder, Julius	105

G

Galle, Claude	256
Gurlitt, Louis	43

H

Hammershøi, Vilhelm	96
Hartmann's	420
Heinrich-Hansen, Adolf	83
Hertz, P.	447
Heuer	595, 596
Hilbert, M.	500
Holmstrup, V.	565
Holsøe, Carl	91, 93, 95, 99
Hublot	573
Hörner, Johan, attributed to	124

I

Ilsted, Peter	92, 94
Ivanowich, Vasilije	68
IWC	591, 592, 597

J

Jacobsen, Antonio	64
Jaeger-LeCoultre	584
Jagert, Willy	482, 483, 484, 485
	486, 487, 488, 489
	490, 491, 492, 493
	494, 495, 496, 497
Janesich	445
Jensen, C. A.	78
Jensen, Georg	442, 534, 535, 556
Juel, Jens	70, 74, 75
Jürgensen, Urban	586

K

Kessel, Jan van, circle of	117
Kieldrup, A. E.	72
Klarlund, Povl	475
Kloss, Frederik Theodor	69
Kornbeck, Peter	58
Kratzenstein Stub, C. G., attributed to	125
Kroese, Johan Pieter	208
Krøyer, P. S.	27, 33
Kyhn, Vilhelm	76

L

Lillie, Joseph Christian	288
Locher, Carl	26
Longines	570
Looten, Jan, circle of	119
Lund, F. C.	49
Lundbye, Johan Thomas	42
Læssøe, Thorald	55

M

Manière, Charles-Guillaume	281
Marstrand, Wilhelm	44
Marstrand, Wilhelm, after	45
Melbye, Anton	57, 73

Munsteiner, Bernd	559
Møller, Andreas	114
Mønsted, Peder	54, 102
	103, 106, 107

N

Nardi	386
Nielsen, Lorenz	295
Notkin, Rebekka	440

O

Omega	569, 577, 578, 579, 581
Ortmann, Mathias, attributed to	211

P

Panerai	593
Patek Philippe	566, 567, 568, 582
	585, 598, 600, 605
Paulesen, Erik	123
Petzholdt, Fritz	39, 40
Plassan, Antoine-Émile	98
Plum, August	53

R

Raoux, Albert	112
Ring, Ghita	531
Ring, L. A.	1, 2, 3, 4, 5, 6, 7
	8, 9, 10, 11, 12, 13, 14
Rolex	571, 572, 574, 575, 576
	580, 587, 588, 589, 594
Roussel, Pierre	204
Rørbye, Martinus	41, 47, 56, 65

S

Shamballa	498
Simonsen, Simon	52
Slott-Møller, Harald	31
Sormani, Paul	308
Syberg, Fritz	108, 109, 110

T

Tavannes Watch Co.	602
Tiffany & Co.	395, 499, 527
	540, 546, 561
Tuxen, Laurits	23

V

Vacheron & Constantin	590
Vasi, Giuseppe Agostino	126
Vick, Richard	189

W

Wegmann, Bertha	84
-----------------	----

Z

Zahrtmann, Kristian	51, 101
---------------------	---------

RUSSIAN ART & ANTIQUES

June 2017

Consignments for this summer's Russian auctions are rolling in!
We have already received a unique private collection of art and antiques
from the 16th century until 1917, collected in the 1920s St. Petersburg,
but we are still on the lookout for more auction lots.
Prior to the sale in Copenhagen, we will showcase some of the highlights in London.

For further information, please contact our Russian chief expert Martin Hans Borg
on +45 8818 1128 or mhb@bruun-rasmussen.dk



*Pietro Antonio Rotari, style of, 18th century.
Estimate: DKK 200,000-300,000/ € 27,000-40,500*



*C. E. Bolin: Ruby- and diamond brooch, c. 1900.
Estimate: DKK 50,000/ € 6,700*



*Feodor Rückert: Wedding kovsh, 1896-1908.
Estimate: DKK 100,000-150,000/ € 13,500-20,000*



*Church icon. Novgorod School, 16th century.
Estimate: DKK 800,000-1,000,000/ € 110,000-135,000*



BRUUN RASMUSSEN
AUCTIONEERS OF FINE ART

ASIAN ART & ANTIQUES

June 2017

We are already receiving consignments for this summer's Asian auctions. If you have Asian art that you are considering selling, we can offer you a free and non-binding valuation.



The interest in Asian art has increased significantly in recent years. A rare blue and white Ming porcelain Meiping vase from the Yongle period stands as the clearest evidence of this. With a hammer price of DKK 12 million (€ 1.6 million) we beat our own auction record for an Asian piece of decorative art.



BRUUN RASMUSSEN

AUCTIONEERS OF FINE ART

Disse købsvilkår udgør Bruun Rasmussen Kunstauktioner A/S' ("BRK") købsvilkår for traditionelle auktioner og er gældende fra 1. februar 2017. BRK kan til enhver tid ændre købsvilkårene.

Ved bud accepterer budgiver/køber at være bundet af de til enhver tid gældende købsvilkår, som fremgår på bruun-rasmussen.dk. Købsvilkårene gælder både i forhold til erhvervsdrivende og forbrugere.

FØR AUKTIONEN

1 VURDERING AF GENSTANDE

1.1 Alle udbudte genstande er vurderet af BRK. Vurderingen er et skøn over det forventede hammerslag, jf. punkt 5.3. Vurderingen er baseret på tidligere salg af samme type genstande og erfaringer hos BRK. Hammerslag kan derfor falde højere eller lavere ud end vurderingen.

2 BESKRIVELSE AF GENSTANDE

- 1.1 Udbudte genstande præsenteres med fotos og beskrivelse i kataloger og på bruun-rasmussen.dk. Beskrivelsen foretages efter bedste overbevisning af BRK og ud fra en nøje undersøgelse efter den på salgstidspunktet herskende opfattelse blandt eksperter.
- 1.2 De udbudte genstande er af en alder og art, der bevirker, at de ofte er behæftede med slitage eller beskadigelser. Som udgangspunkt sælges alt som brugte genstande. Derfor beskrives almindelig slitage ikke.
- 1.3 Hvis en potentiel køber ikke har mulighed for at besigtige genstanden ved selvsyn, kan der i de fleste tilfælde udfærdiges en beskrivelse af standen i en konditionsrapport. Beskrivelsen tjener blot som identifikation og kan ikke anvendes til vurdering af genstandens stand eller værdi.
- 1.4 I visse tilfælde vælger BRK at beskrive en genstands oprindelse. Det sker, hvis en tidligere ejer er offentlig kendt, og/eller hvis historien om et tidligere ejerskab belyser genstanden og dens art. Omvendt sker det også, at sådanne informationer udelades fra beskrivelsen, f.eks. for at imødekomme sælgers ønske om diskretion.
- 1.5 Vurderingen og beskrivelsen kan blive revideret forud for auktionen. Ændringer offentliggøres på bruun-rasmussen.dk.

3 EFTERSYN

3.1 Udbudte genstande udstilles op til auktionen i et show-room hos BRK. Potentielle budgivere opfordres til at se genstanden efter i detaljer på disse eftersyn, hvor der også er mulighed for at rådføre sig hos vurderingssagkyndige.

UNDER AUKTIONEN

4 BRK'S ROLLE

- 4.1 Salget af en genstand formidles af BRK på vegne af sælger. BRK afhænder altid udbudte genstande til den højst mulige pris under budgivningen.
- 4.2 Udbudte genstande kan have en med sælger aftalt mindstepris, hvorunder den ikke kan sælges. Denne pris er fortrolig.
- 4.3 De traditionelle auktioner overværes af en af Justitsministeriets beskikket auktionsleder, der sikrer, at auktionerne går retmæssigt for sig.

5 BUDGIVNING

- 5.1 Auktionerne afvikles i danske kroner. De tilnærmelsesvise beløb i euro/US dollar vil blive oplyst på skærme i auktionssalen og i øvrigt på opfordring.
- 5.2 Auktionarius bestemmer overbuds størrelse og i hvilket tempo, auktionen afvikles. Overbud stiger normalt med 5 % - 10 % i forhold til det foregående bud. Normalt sælges der 50-100 katalognumre i timen.
- 5.3 Hammerslag betegner både det forhold, at auktionarius slår med hammeren og derved markerer budgivningens afslutning, og den pris (budsum), den udbudte genstand sælges til. Se punkt 7 vedrørende beløb, der tillægges hammerslaget.
- 5.4 Køber er den budgiver, der opnår hammerslag. Ved hammerslaget indgås på baggrund af disse købsvilkår en bindende købs-/salgsaftale.
- 5.5 Bydes på andres vegne, hæfter budgiver som selvskyldnerkautionist for handlen.
- 5.6 Genstande købes som beset, og køber har uanset budtype ingen fortrydelsesret, heller ikke efter forbrugeraftaleloven.
- 5.7 Budgiver skal efter anvisninger fra BRK identificere sig og dokumentere sin betalingsdygtighed, f.eks. ved registrering af gyldigt betalings-/kreditkort, bankgaranti eller indbetaling af depositum.
- 5.8 BRK kan nægte at acceptere et bud, hvis en tilstrækkelig sikkerhed for betaling mangler, eller hvis budgiver tidligere har misligholdt betalingsforpligtigelser ved køb hos BRK.
- 5.9 Auktionslederen træffer i samråd med auktionarius afgørelse i alle tvivlstilfælde omkring budgivningen.

6 BUDTYPER

6.1 Der er følgende muligheder for at afgive bud:
PERSONLIGT FREMMØDE:

Registrering og udlevering af bydeskilt foregår ved indgangen til auktionssalen. Når budgiver ønsker at byde, signaleres dette til auktionarius ved at række bydeskiltet i vejret og tydeligt fremvise dets nummer.

KOMMISSIONSBUD:

Det ønskede maksimale bud kan afgives via bruun-rasmussen.dk frem til auktionens start eller pr. e-mail, fax eller telefon, så budet er modtaget senest 24 timer forud for auktionens start. En kommissionær byder på budgivers vegne inden for rammerne af det ønskede maksimalbud og vil altid afgive lavest muligt overbud.

TELEFONBUD:

I forhold til visse genstande er der mulighed for at blive ringet op af en medarbejder fra BRK, der vil byde på budgivers vegne under auktionen. Servicen kan bestilles via bruun-rasmussen.dk indtil tre timer før auktionens start.

LIVE BIDDING:

Det er muligt at følge auktionen live og byde med via bruun-rasmussen.dk.

FORAUKTION:

Visse traditionelle auktioner indledes med en net-auktion. De højeste bud på net-auktionen danner udgangspunktet på den efterfølgende traditionelle auktion.

EFTER AUKTIONEN

7 BELØB, DER TILLÆGGES HAMMERSLAGET

7.1 I tillæg til hammerslaget, jf. punkt 5.3, skal køber for den enkelte genstand betale købersalær og, hvis betingelserne er opfyldt, de øvrige beløb, der er nærmere beskrevet nedenfor. Det samlede beløb, som køber skal betale til BRK, benævnes "købesummen".

7.1.1 KØBERSALÆR:

Hammerslaget tillægges et salær til BRK. På de traditionelle auktioner udgør salæret 24 % af hammerslaget + moms af salæret, i alt 30 %. For frimærker og mønter udgør salæret 20 % af hammerslaget + moms af salæret, i alt 25 %.

7.1.2 FULDMOMS:

Visse genstande handles efter de gældende regler om fuldmoms. Her beregnes der moms på 25 % af både hammerslag og salær. Disse genstande er i beskrivelsen i kataloget og på bruun-rasmussen.dk mærket med symbolet "✳" eller med teksten: "Dette emne handles med fuldmoms".

7.1.3 FØLGERETSVEDERLAG:

Ifølge dansk lovgivning om ophavsret skal der opkræves følgeretsvederlag for værker af nyere danske og visse udenlandske kunstnere, som enten er nulevende eller ikke har været døde i mere end 70 år. Vederlaget opkræves på vegne af Copydan Billedkunst. Disse værker er i kataloget og på bruun-rasmussen.dk mærket med "CD". Copydan-afgiften tillægges hammerslaget + salær (ekskl. moms), når beløbet overstiger 300 euro, som angivet nedenfor:

Hammerslag + salær (ekskl. moms)	Betalingsssats
300 - 50.000 euro	5%
50.000 - 200.000 euro	3%
200.000 - 350.000 euro	1%
350.000 - 500.000 euro	0,5%
over 500.000 euro	0,25%

Copydan-afgiften kan ikke overstige 12.500 euro (ekskl. moms) for den enkelte genstand. Afgiften skal betales i danske kroner, og omregningskursen (EUR/DKK) fastsættes af Copydan Billedkunst.

7.1.4 BETALINGS-/KREDITKORTGEBYR:

BRK forbeholder sig ret til at opkræve de af indløsnings-selskaberne pålagte betalings-/kreditkortgebyrer. Satserne fremgår ved budgivning via bruun-rasmussen.dk og ved betaling.

8 BETALINGSFRIST

8.1 Købesummen forfalder til betaling ved hammerslaget, og køber har herefter otte dage til at betale købesummen til BRK.

9 BETALINGSMÅDER

9.1 Betaling kan ske på følgende måder:

A: MED BETALINGS-/KREDITKORT (Dankort, Visa, MasterCard, Diners Club, China UnionPay og JCB) eller kontant (op til 50.000 kr./ca. 6.700 euro) i auktionssalen eller efterfølgende i en afdeling hos BRK.

B: MED BETALINGS-/KREDITKORT (Dankort, Visa, MasterCard, Diners Club og JCB) på bruun-rasmussen.dk under købers personlige side.

C: VIA BANKOVERFØRSEL til en BRK's konto i Danske Bank: 4183 4310970638 · Swift/BIC: DABADKKK · IBAN: DK4130004310970638.

10 MOMSFRITAGELSE, -BETALING OG -DEPONERING

10.1 Visse købere kan vælge hvilken momstype, der skal være gældende for handlen. Valget skal meddeles BRK senest to hverdage efter købet og kan ikke omgøres.

A: Momsregistrerede virksomheder i Danmark kan vælge, at handlen skal ske efter reglerne om fuldmoms, jf. punkt 7.1.2.

B: Momsregistrerede virksomheder i et andet EU-land kan fritages for dansk moms, når det kan dokumenteres, at genstanden er transporteret til den udenlandske adresse, som køber har oplyst over for BRK, og som er anført på fakturaen. I sådanne tilfælde skal der afregnes moms efter de gældende regler i det land, hvor køber er momsregistreret. Det tilrådes at søge oplysning hos de lokale myndigheder. Køber kan undlade at gøre brug af muligheden for momsfrigtagelse og i stedet betale dansk brugtmoms/fuldmoms.

C: Købere med bopæl uden for EU kan fritages for dansk moms, når det kan dokumenteres, at genstanden er transporteret ud af EU. BRK udsteder så vidt muligt og mod gebyr de fornødne eksportpapirer, som skal fremvises ved toldmyndighederne. Køber kan undlade at gøre brug af muligheden for momsfrigtagelse og i stedet betale dansk brugtmoms/fuldmoms.

10.2 Momsregistrerede virksomheder i et andet EU-land og købere med bopæl uden for EU skal deponere den danske moms af fakturabeløbet hos BRK, indtil eksporten er gennemført på dokumenteret lovpligtig vis. Foretages eksporten af en af BRK godkendt speditør, skal momsen ikke deponeres. Se listen over godkendte speditører på bruun-rasmussen.dk

11 OVERSKRIDELSE AF BETALINGSFRIST

11.1 Overskrides en betalingsfrist, herunder fristen i punkt 8, opkræves morarenter, som beregnes efter Nationalbankens officielle udlånsrente + 8 % om året af det skyldige beløb.

11.2 Betales Købesummen inkl. renter ikke senest ti dage efter, at der er fremsat påkrav herom, er BRK berettiget til at søge købesummen betalt ved modregning i depositum/ved træk på bankgaranti eller at hæve købet.

11.3 Hæves købet, er BRK berettiget til at sælge genstanden på en ny auktion og kræve omkostningerne og en eventuel difference mellem hammerslag (samt salær), der er opnået på de to auktioner, betalt af den misligholdende køber.

11.4 Alle forfaldne krav (inkl. omkostninger), som ikke betales rettidigt, kan BRK i tillæg til inkasso søge inddrevet på følgende måder:

- A: For købers regning sælge genstande indleveret til auktion af eller på vegne af køber. Salget kan gennemføres uden hensyntagen til en aftalt mindstepris. Genstande indleveret til auktion kan ikke kræves udleveret, så længe forfalden gæld henstår ubetalt.
- B: Inddrage købers tilgodehavende hos BRK, herunder tilgodehavende fra salg af genstande indleveret af eller på vegne af køber, uanset om et sådant tilgodehavende stammer fra auktionssalg, som ligger forud for eller efter tidspunktet for købers misligholdelse.

12 AFHENTNING OG UDLEVERING

- 12.1 Ejendomsretten til en købt genstand overgår til køber, når hele købesummen inkl. eventuelle renter og gebyrer er betalt, og først herefter kan udlevering af genstanden finde sted.
- 12.2 Ved udlevering af en købt genstand forbeholder BRK sig retten til at kræve tilfredsstillende dokumentation for, at den person, som ønsker genstanden udleveret, enten selv er køberen eller er bemyndiget af køberen til at få genstanden udleveret.
- 12.3 Udlevering af visse våben kræver forevisning af gyldig våbentilladelse. Sådant krav er angivet med teksten "Køb af dette emne kræver forevisning af gyldig våbentilladelse" i kataloget og på bruun-rasmussen.dk.
- 12.4 Købte genstande henligger fra hammerslaget for købers regning og risiko. Afhentning skal ske senest otte dage efter sidste auktionsdag.
- 12.5 Foretages afhentningen ikke rettidigt, transporteres de købte genstande til et lager for købers regning og risiko. Transporten koster 150 kr. inkl. moms pr. genstand, og opbevaringen koster 150 kr. inkl. moms pr. genstand pr. påbegyndt uge. Henligger en genstand uafhængt i så lang tid, at lagerlejen overstiger genstandens værdi, er BRK berettiget til for købers regning og risiko og uden hensyn til mindstepris at bortauktionere genstanden eller sælge den underhånden. Køber hæfter fortsat for udgifter til transport og lagerleje, der ikke dækkes ved sådant salg.

13 FORSENDELSE

- 13.1 Er køber forhindret i selv at afhente en genstand, tilbyder BRK for købers regning og risiko at emballere og arrangere forsendelse enten med post eller speditor. Se punkt 12.2 angående legitimation.

14 EKSPORTTILLADELSE

- 14.1 For at sikre at dansk kulturarv af afgørende betydning forbliver i Danmark, kan Kulturværdiudvalget for visse genstandes vedkommende nedlægge eksportforbud. Hvis køber ønsker at eksportere en genstand ud af Danmark, hvor der er nedlagt et eksportforbud, annulleres købet, og Kulturværdiudvalget er forpligtet til at overtage genstanden til den pris, der blev opnået på auktionen. Køber kan ikke rejse krav mod BRK som følge af, at et eksportforbud bliver nedlagt.
- 14.2 Genstande, som i beskrivelsen i kataloget og på bruun-rasmussen.dk er mærket med symbolet "©", er omfattet af CITES-konventionen, der har til formål at regulere handel med genstande fremstillet af udryddelsestruede vilde dyr og planter. BRK indhenter det formodne CITES-certifikat fra Naturstyrelsen, der tillader handel og eksport til lande inden for EU. Ved eksport til lande uden for EU kan

særlige regler gøre sig gældende, og køber opfordres til at indhente oplysninger fra egne myndigheder.

15 MANGLER VED KØBTE GENSTANDE

- 15.1 Købelovens mangelsregler kan finde anvendelse. Nedenfor er angivet et ikke udtømmende uddrag af købers mangelsbeføjelser.
- 15.2 Køber er berettiget til at annullere et køb, hvis beskrivelsen har været behæftet med væsentlige fejl, der har ført til et højere hammerslag, end en korrekt beskrivelse ville have resulteret i. I sådanne tilfælde vil den samlede købesum blive refunderet. Køber kan ikke kræve betaling af renter af købesummen eller kræve dækning af anden udgift eller tab.
- 15.3 Et køb kan ikke annulleres, og køber kan ikke kræve købesummen refunderet eller rejse noget andet krav mod BRK, hvis beskrivelsen af genstanden er i overensstemmelse med punkt 2, eller hvis en påvisning af falskneri havde krævet brug af videnskabelige metoder, der enten ikke var tilgængelige på salgstidspunktet, havde været uforholdsmæssigt omkostningskrævende at anvende eller havde ført til beskadigelse af den pågældende genstand.
- 15.4 Krav om annullering af et køb skal meddeles BRK, når køber er blevet bekendt med det forhold, der berettiger køber til at annullere købet, dog senest to år fra den seneste afhentningsdato efter punkt 12.4. Den købte genstand skal returneres til BRK i samme stand som på hammerslagstidspunktet. Overholdes disse betingelser ikke, mister køber retten til at annullere købet og kan ikke kræve købesummen refunderet. Køber er selv ansvarlig for at betale de omkostninger, der er forbundet med returnering af genstanden.

16 INDSIGELSE- OG ANSVARSBEGRÆNSNING

- 16.1 BRK tager forbehold for fejl, tekniske vanskeligheder samt udefrakommende misbrug eller forstyrrende påvirkning under auktionen. Budgivere kan ikke rejse noget krav mod BRK som følge heraf.
- 16.2 Køber er i alle tilfælde selv ansvarlig for korrekt betaling af moms og andre afgifter, gebyrer mv. i overensstemmelse med danske og udenlandske regler.
- 16.3 Medmindre andet fremgår af disse købsvilkår, kan BRK aldrig blive ansvarlig for budgivers/købers driftstab, avancetab, andre indirekte tab eller følgeskader.

17 PERSONDATAPOLITIK

- 17.1 Det er vigtigt for BRK at sikre fortrolighed og sikkerhed omkring budgivers/købers personlige oplysninger. Persondatapolitikken fremgår af bruun-rasmussen.dk.

18 KLAGE, TVISTLØSNING OG LOVVALG

- 18.1 Har budgiver/køber en klage, kan der altid rettes henvendelse til BRK.
- 18.2 Er budgiver/køber forbruger, og kan der ikke findes en løsning, kan der klages til Center for Klageløsning, Carl Jacobsens Vej 35, 2500 Valby, hvis betingelserne herfor er opfyldt. Budgiver/køber kan klage til Center for Klageløsning via forbrug.dk. Ved indgivelse af en klage skal budgiver/køber oplyse e-mailadressen: kfst@kfst.dk.
- 18.3 Tvister skal indbringes i Danmark ved Københavns Byret, jf. dog punkt 18.2. I forbrugerforhold gælder de ufravigelige værnetingsregler.

Jesper Bruun Rasmussen, auktionsholder

These conditions of purchase represent Bruun Rasmussen Kunstauktioner A/S' ("BRK") conditions of purchase for traditional auctions and are effective from 1 January 2017. BRK may modify the conditions of purchase at any time.

By bidding, the bidder/buyer accepts the current conditions of purchase as they appear on bruun-rasmussen.dk. The conditions of purchase are applicable to both business owners and consumers.

BEFORE THE AUCTION

1 VALUATION OF ITEMS

- 1.1 All the offered items are valued by BRK. The valuation is an estimate based on the expected hammer price, see paragraph 5.3. The estimate is based on the previous sale of similar items as well as BRK's past experience. The hammer price can therefore be higher or lower than the estimated price.

2 DESCRIPTION OF ITEMS

- 2.1 Items up for auction are presented with photographs and descriptions in catalogues and on bruun-rasmussen.dk. The description is worded according to the best of BRK's knowledge and based on detailed research in accordance with the prevailing views among experts at the time of sale.
- 2.2 The items up for auction are of an age and nature that often mean that they are in a worn or damaged condition. As a starting point everything is sold as used items. For this reason, the results of regular wear and tear are not included in the descriptions.
- 2.3 If a potential buyer is unable to inspect the item in person, a description of the item's condition can be made in a condition report in most cases. The description merely serves as identification and cannot be used to assess the item's condition or worth.
- 2.4 In some cases, BRK may choose to describe an item's provenance. Such a description is made if a former owner is publicly known and/or if the story of previous ownership sheds further light on the item and its background. In other cases, such information is left out of the description, for instance to meet the seller's wish for privacy.
- 2.5 It is possible that the estimate and description are revised prior to the auction. Changes are published on BRK's website.

3 PREVIEW

- 3.1 Items up for auction are presented prior to the auction in one of BRK's showrooms. Potential bidders are encouraged to inspect the items closely at these previews, where they also have the opportunity to consult with the valuation experts.

DURING THE AUCTION

4 THE ROLE OF BRK

- 4.1 The sale of an item is facilitated by BRK on behalf of the seller, and BRK always sells items up for auction at the highest price offered during the bidding round.
- 4.2 Items up for auction can have a reserve price that has been agreed upon with the seller. The price is confidential and the item cannot be sold below this price.
- 4.3 The traditional auctions are presided over by one of the Danish Ministry of Justice's appointed auctioneers, ensuring that the auctions proceed correctly and lawfully.

5 BIDDING

- 5.1 The currency used while the auctions take place is Danish kroner. The approximate amount in euro/US dollars is shown on screens in the saleroom and also on request.
- 5.2 The auctioneer determines the size of the bid increment and the pace of the auction. Bid increments usually rise by 5% - 10% compared to the previous bid. Approximately 50-100 auction lots are sold per hour.
- 5.3 The hammer price refers both to the gavel used by the auctioneer that signifies the end of a bidding round on an item and to the price (bidding amount) that the item up for auction is sold for. See paragraph 7 regarding amounts added to the hammer price.
- 5.4 The buyer is the bidder that submits the highest bid, thereby obtaining the hammer price. At the moment the hammer price is determined, a binding purchase/sale agreement is entered into based on these conditions of purchase.
- 5.5 If bids are made on behalf of others, the bidder serves as surety for the transaction.
- 5.6 Items are purchased in their present state and condition, and regardless of the type of bidding the buyer has no right to withdraw his bid, neither under the Danish Consumer Contracts Act.
- 5.7 Bidders are required, in accordance with BRK's instructions, to identify themselves and document their ability to pay, for instance by registration of a valid debit/credit card, bank guarantee or a deposit.
- 5.8 BRK may refuse to accept a bid if a sufficient guarantee of the bidder's ability to pay is not provided, or if the bidder has previously defaulted on payment obligations on purchases from BRK.
- 5.9 The overseeing auctioneer will, in consultation with the auctioneer at the podium, decide what to do in matters of dispute concerning a bidding round.

6 TYPES OF BIDDING

- 6.1 Bidding options:
IN PERSON:
Registration and obtaining the bidding paddle take place at the entrance to the saleroom. When the bidder wishes to bid, it is signalled to the auctioneer on the podium by raising the bidding paddle in the air and clearly displaying its number.
COMMISSION BIDS:
The intended maximum bid can be submitted via bruun-rasmussen.dk until the start of the auction or by e-mail, fax or phone, so that the bid is received no later than 24 hours prior to the start of the auction. A commission agent

bids on behalf of the bidder within the limits of the stated maximum bid. The commission agent will always bid the lowest possible amount to achieve the hammer price.

TELEPHONE BID:

With certain items it is possible to have a BRK employee call the bidder over the phone. The employee will then bid on behalf of the bidder during the auction. The service can be booked via bruun-rasmussen.dk up until three hours before the auction is set to begin.

LIVE BIDDING:

It is possible to follow the auction live and bid on the auction lots via bruun-rasmussen.dk.

PRE-AUCTION:

Some traditional auctions are preceded by an online auction. The highest bids from the online auction then represent the starting bids at the following traditional auction.

AFTER THE AUCTION

7 AMOUNTS ADDED TO THE HAMMER PRICE

7.1 In addition to the hammer price, see paragraph 5.3, the buyer pays a buyer's premium for the individual items as well as the other amounts described below if the conditions for these are applicable. The total amount that the buyer pays to BRK is called the "purchase price".

7.1.1 Buyer's Premium: The hammer price always includes an additional fee to BRK. At the traditional auctions, the fee is 24% of the hammer price + VAT of the fee, 30% in total. For stamps and coins, the fee is 20% of the hammer price + VAT of the fee, a total of 25%.

7.1.2 Full VAT: Certain items are sold at auction in accordance with the current rules regarding full VAT. In such a situation, a VAT of 25% is imposed on both the hammer price and the buyer's premium. These items are marked in the catalogue and on bruun-rasmussen.dk with the symbol "✳", or with the text: "This item is sold with full VAT".

7.1.3 Royalty Fee: In accordance with Danish copyright law, royalty fees have to be charged for works by new Danish and certain foreign artists, who are either alive or have not been dead for more than 70 years. The fee is charged on behalf of Copydan Visual Arts. These works are marked "CD" in the catalogue and on bruun-rasmussen.dk. The Copydan fee is added to the hammer price + the buyer's premium (exclusive of VAT) if the amount exceeds EUR 300, as indicated below:

Hammer price + buyer's premium (ex. VAT)	Payment Rate
300 - 50.000 euro	5%
50.000 - 200.000 euro	3%
200.000 - 350.000 euro	1%
350.000 - 500.000 euro	0.5%
over 500.000 euro	0.25%

The Copydan fee cannot exceed EUR 12,500 (ex. of VAT) for each item. The fee must be paid in Danish kroner, and the conversion rate (EUR/DKK) is set by Copydan Visual Arts.

7.1.4 Debit/Credit Card Fee: Amounts Added to the Hammer Price: BRK reserves the right to charge the debit/credit card fees imposed by the payment services companies. The rates will appear when bidding on bruun-rasmussen.dk and at the time of payment.

8 PAYMENT DEADLINE

8.1 The purchase price falls due after the hammer price has been determined, and then the buyer has eight days to pay BRK the purchase price.

9 PAYMENT METHODS

9.1 The payment can be made in the following ways:

- A: With debit/credit card (Dankort, Visa, MasterCard, Diners Club, China UnionPay and JCB) or cash (up to DKK 50,000 (approx. EUR 6,700)) in the saleroom or subsequently at one of BRK's locations.
- B: With debit/credit card (Dankort, Visa, MasterCard, Diners Club and JCB) via BRK's website on the buyer's personal page.
- C: By bank transfer into BRK's account with Danske Bank: 4183 4310970638 · Swift/BIC: DABADKKK · IBAN: DK4130004310970638.

10 VAT EXEMPTION, PAYMENT & DEPOSIT

10.1 Some buyers can choose which type of VAT should apply to the transaction. The choice has to be communicated to BRK no later than two working days after the purchase and cannot be changed subsequently.

- A: Businesses in Denmark registered for VAT can decide that the transaction is to be conducted in accordance with the rules for full VAT, see paragraph 7.1.2.
- B: Businesses registered for VAT in another EU Member State can be exempted from paying Danish VAT if it can be proved that the item has been transported to the foreign address that the buyer has registered with BRK and which is written on the invoice. In such cases, the VAT should be settled according to the rules applicable in the country where the buyer is registered for VAT. It is advisable to consult with the local authorities. The buyer can decide not to be exempt from regular VAT and instead pay Danish VAT on second-hand goods/full VAT.
- C: Buyers residing outside the EU can be exempted from Danish VAT if it can be proved that the item has been transported out of the EU. To the extent possible and for a fee, BRK can issue the necessary export documents for the customs authorities. The buyer may decide not to be exempt from regular VAT and instead pay Danish VAT on second-hand goods/full VAT.

10.2 Companies registered for VAT in another EU Member State and buyers residing outside the EU must deposit the Danish VAT on the amount invoiced with BRK until the export process has been completed in a documented, lawful fashion. If the export is undertaken by one of BRK's authorized forwarding agents, the VAT does not have to be deposited. See the list of authorized forwarding agents on bruun-rasmussen.dk.

11 OVERDUE PAYMENTS

11.1 If payment is made after a deadline, including the deadline specified in paragraph 8, interest on overdue payments will be charged and estimated in accordance with the Danish Central Bank's official lending rate + 8% per year on the amount due.

11.2 If the purchase price, including interest, has still not been paid ten days after the demand for payment has been made, BRK is entitled to seek the purchase price paid by making a set-off against the deposit/by drawing on the bank guarantee or to cancel the purchase.

11.3 If the purchase is cancelled, BRK is entitled to sell the item at a new auction and demand the costs and any difference between the new and the earlier hammer price (including the buyer's premium) covered by the defaulting buyer.

11.4 In addition to debt collection, BRK may seek recovery of all due claims (including costs) not paid in a timely manner in the following ways:

- A: Making the buyer cover the costs of selling items consigned to auction by or on behalf of the buyer. The sale can be conducted without regard to an agreed reserve price. Items consigned for auction cannot be collected as long as overdue debts are unpaid.
- B: Seizing the buyer's remaining balance with BRK, including the balance from the sale of items consigned by or on behalf of the buyer, regardless of whether such receivables derive from auction sales prior to or after the date of the buyer's default on the payment.

12 PICK-UP & COLLECTION

- 12.1 The title to a purchased item passes to the buyer when the full purchase price, including any interest and fees, has been paid, and only then can the collection of an item take place.
- 12.2 In connection with the collection of a purchased item, BRK reserves the right to demand satisfactory documentation that the person who wants to pick up the item is either the buyer himself/herself or authorized by the buyer to receive the item on his/her behalf.
- 12.3 The collection of certain weapons requires presentation of a valid weapons certificate. Items with such requirements are listed with the text: "The purchase of this item requires the presentation of a valid weapons certificate" in the catalogue and on bruun-rasmussen.dk.
- 12.4 Purchased items are stored after the auction at the buyer's expense and risk. Pick-up must take place no later than eight days after the last auction day.
- 12.5 If the item(s) is/are not picked up on time, the purchased items will be transported to a warehouse at the buyer's risk and expense. The transport costs are DKK 150 including VAT per item and the storage costs are DKK 150 including VAT per item for each week or part of a week. If an item is left unclaimed for an amount of time that results in the storage costs exceeding the value of the item, BRK will be entitled to, at the buyer's expense and risk and without regard to the reserve price, sell the item at an auction or privately. The buyer is still liable for the costs of transportation and storage not covered by such sale.

13 SHIPPING

- 13.1 If the buyer is unable to pick up the purchased item, BRK offers to pack and arrange delivery either by mail or by freight forwarder at the buyer's risk and expense. See paragraph 12.2 regarding identification.

14 EXPORT LICENSE

- 14.1 To ensure that Danish cultural heritage of vital importance remains in Denmark, the Danish Cultural Assets Commission can place an export ban on certain items. If the buyer wishes to export an item that is subject to an export ban in Denmark, the purchase will be cancelled and the Danish Cultural Assets Commission is obliged to acquire ownership of the item for the price obtained at auction. The buyer cannot raise any claims against BRK as a result of an export ban.
- 14.2 Items marked with the symbol "©" in their description in the catalogue and on bruun-rasmussen.dk fall under the CITES Convention, whose aim is to regulate the trade of items made of endangered species and flora. BRK obtains the required CITES certificate from the Danish Nature Agency that allows trade and export to countries within the EU. Special rules may apply for export to countries outside the EU, and the buyer is encouraged to consult the relevant local authorities about this issue.

15 DEFECTS IN THE PURCHASED ITEMS

- 15.1 The lack of conformity rules of the Danish Sale of Goods Act may apply. Below is a non-exhaustive excerpt of the buyer's remedies in regard to lack of conformity.
- 15.2 The buyer is entitled to cancel a purchase if the description contained significant errors that have led to a higher hammer price than a correct description would have resulted in. In such cases, the total purchase price will be refunded. The buyer cannot demand payment of interest on the purchase price or demand payment of any other expenses or losses.
- 15.3 A purchase cannot be cancelled and the buyer cannot demand a refund of the purchase price or raise any other claims against BRK if the description of the item is in compliance with paragraph 15.2. The same applies if evidence of forgery has required the use of scientific methods that were either not available at the time of sale, were excessively costly to use or led to the damage of the item in question.
- 15.4 Claims for a cancellation of a purchase must be notified to BRK when the buyer has discovered the fact that entitles the buyer to cancel the purchase. This notice, however, has to be given no later than two years after the final pick-up date according to paragraph 12.4. The item purchased must be returned to BRK in the same condition as it was on the day it was sold at auction. If these conditions are not met, the buyer loses the right to cancel the purchase and cannot claim a refund of the purchase price. The buyer is responsible for paying the costs associated with the return of the item.

16 OBJECTIONS & LIMITATIONS OF LIABILITY

- 16.1 BRK is aware that errors, technical difficulties and external abuse or disruptive influences may occur during the auction. Bidders cannot raise any claims against BRK as a result of such events.
- 16.2 The buyer is always responsible for the correct payment of VAT and other costs, fees etc. in accordance with Danish and foreign regulations.
- 16.3 Unless otherwise stated in these conditions of purchase, BRK may never be held liable for bidders'/buyers' operating loss, loss of profits, other indirect losses or consequential loss.

17 PRIVACY POLICY

- 17.1 It is important to BRK to ensure confidentiality and security regarding the bidder's/buyer's personal information. The privacy policy can be found on bruun-rasmussen.dk.

18 COMPLAINTS, DISPUTE RESOLUTION AND APPLICABLE LAW

- 18.1 BRK can always be contacted if the bidder/buyer has a complaint.
- 18.2 If the bidder/buyer is a consumer and a solution cannot be found, a complaint can be submitted to the Complaint Resolution Centre, Carl Jacobsen Vej 35, 2500 Valby, Denmark, if the conditions for such a complaint are met. The bidder/buyer can complain to the Complaint Resolution Centre on forbrug.dk. When filing a complaint the bidder/purchaser must disclose the e-mail address: kfst@kfst.dk.
- 18.3 In Denmark, disputes must be brought before the City Court of Copenhagen, but see paragraphs 18.2. The mandatory rules on jurisdiction apply to consumer interests.

Jesper Bruun Rasmussen, Auctioneer

The above is an English translation of the Danish version of the Conditions of Purchase. In case of a dispute, only the Danish version of the present Conditions of Purchase of Bruun Rasmussen is valid.

ADDRESSES

BRUUN RASMUSSEN AUCTIONEERS

COPENHAGEN – BREDGADE

BREDGADE 33

DK-1260 COPENHAGEN K

Tel +45 8818 1111

E-mail: info@bruun-rasmussen.dk

COPENHAGEN – SUNDKROGSGADE

SUNDKROGSGADE 30

DK-2150 NORDHAVN

Tel +45 8818 1111

E-mail: info@bruun-rasmussen.dk

COPENHAGEN – BALTIKAVEJ

BALTIKAVEJ 10

DK-2150 NORDHAVN

Tel +45 8818 1111

E-mail: info@bruun-rasmussen.dk

AARHUS

SØREN FRICHS VEJ 34 D

DK-8230 ÅBYHØJ

E-mail: aarhus@bruun-rasmussen.dk

FYN

NICK MESSMANN

Tel +45 8818 1232

E-mail: nic@bruun-rasmussen.dk

ONLINE AUCTIONS – SUPPORT

BRUUN-RASMUSSEN.DK

Tel +45 8818 1114

E-mail: support@bruun-rasmussen.dk

REPRESENTATIVES:

FRANCE

DITTE HERBORG KROGH · PARIS

Tel +33 6 6185 4564

E-mail: dhk@bruun-rasmussen.dk

SOUTHERN FRANCE & LUXEMBOURG

PETER KOCH

Tel +45 4045 3403

E-mail: p.koch@bruun-rasmussen.dk

ITALY

JEANETTE IDA MØLLER · MILANO

Tel +39 340 053 9219

E-mail: j.moller@bruun-rasmussen.dk

SPAIN

VAGN ERIK KROGSØE

Tel +45 2445 1224

E-mail: vek@bruun-rasmussen.dk

KARIN K.J.V. FRIJS · MARBELLA

Tel +34 630 29 21 02

Fax +34 952 77 74 64

E-mail: k.frijs@bruun-rasmussen.dk

SWEDEN

PETER KLEBERG

Tel +46 (0) 721 777 291

E-mail: pek@bruun-rasmussen.dk

THAILAND

ANDERS NORMANN

Tel +66 818 177 273

E-mail: normann@bruun-rasmussen.dk

USA

RIKKE STORM · NEW YORK

Tel +1 917 930 5543

E-mail: rs@bruun-rasmussen.dk

BENEDICTE HALLOWELL

Tel and Fax +1 617 566 7333

E-mail: b.hallowell@bruun-rasmussen.dk

CONTACT DIRECTLY

KONTAKT DIREKTE

HOVEDNUMMER / MAIN NUMBER

Bruun Rasmussen Auctioneers +45 8818 1111

ADMINISTRATION

Jakob Dupont, CEO +45 8818 1081
dupont@bruun-rasmussen.dk

KUNDESERVICE / CUSTOMER SERVICE

kundeservice@bruun-rasmussen.dk +45 8818 1010
customerservice@bruun-rasmussen.dk +45 8818 1010

KOMMISSIONER / COMMISSIONS

Lise Winther Wobido +45 8818 1013
Anja Bering Hansen +45 8818 1028
bids@bruun-rasmussen.dk

BESTILLING AF KATALOGER / CATALOGUE REQUESTS

Kundeservice / Customer service +45 8818 1111

AUKTIONS RÅDGIVNING / AUCTION GUIDANCE

Franziska Kampmann +45 8818 1026
fka@bruun-rasmussen.dk

TRANSPORT / TRANSPORTATION

transport@bruun-rasmussen.dk +45 8818 1055

VURDERING OG INFORMATION / VALUATION AND INFORMATION

INDBOVURDERINGER / VALUATION AT YOUR HOME

David Utzon-Frank +45 8818 1221
duf@bruun-rasmussen.dk

Kasper Nielsen +45 8818 1121
kn@bruun-rasmussen.dk

Casper Behrendtzen +45 8818 1235
cab@bruun-rasmussen.dk

Hans Ruben +45 8818 1231
hru@bruun-rasmussen.dk

Ralph Lexner +45 8818 1161
rl@bruun-rasmussen.dk

BØGER / BOOKS

Lærke Bøgh +45 8818 1217
lb@bruun-rasmussen.dk

FRIMÆRKER / STAMPS

Lars Godsk Jørgensen +45 8818 1211
lgj@bruun-rasmussen.dk

MØNTER / COINS

Michael Fornitz +45 8818 1201
mfo@bruun-rasmussen.dk

MODERNE DESIGN / MODERN DESIGN

Peter Kjølgaard Jensen +45 8818 1191
pkj@bruun-rasmussen.dk

Ole Ravn +45 8818 1192
olr@bruun-rasmussen.dk

MODERNE KUNST / MODERN ART

Niels Raben +45 8818 1181
nr@bruun-rasmussen.dk

Niels Boe Hauggaard +45 8818 1182
nbh@bruun-rasmussen.dk

PORCELÆN, GLAS OG ORIENTALSK KUNSTINDUSTRI / CERAMICS, GLASS AND ORIENTAL WORKS OF ART

Ralph Lexner +45 8818 1161
rl@bruun-rasmussen.dk

Charlotte Hviid +45 8818 1162
chv@bruun-rasmussen.dk

RUSSISK / RUSSIAN

Martin Hans Borg +45 8818 1128
mhb@bruun-rasmussen.dk

SMYKKER / JEWELLERY

Katrin Mikkelsen Sørensen +45 8818 1174
kms@bruun-rasmussen.dk

SØLV / SILVER

Amalie Hansen +45 8818 1194
amh@bruun-rasmussen.dk

TÆPPER / CARPETS

Henrik Schleppegrell +45 8818 1145
hsc@bruun-rasmussen.dk

VIN / WINE

Morten Stenør Larsen +45 8818 1207
msl@bruun-rasmussen.dk

VÅBEN / WEAPONS

David Utzon-Frank +45 8818 1221
duf@bruun-rasmussen.dk

ÆLDRE KUNST / FINE ART

Kasper Nielsen +45 8818 1121
kn@bruun-rasmussen.dk

Birte Stokholm +45 8818 1122
bst@bruun-rasmussen.dk

ÆLDRE MØBLER / FURNITURE

Anders Fredsted +45 8818 1142
afr@bruun-rasmussen.dk

Henrik Schleppegrell +45 8818 1145
hsc@bruun-rasmussen.dk

COMMISSION BIDS

KOMMISSIONSBUD

It is possible to leave commission bids if you can not be present at the auction yourself. This service is free of charge.

When leaving a commission bid, you are instructing our customer service to bid up to a specified amount on your behalf.

The situation can occur that another buyer has already bid the same as you were prepared to. Are you then willing to bid further? If not the lot will be sold to another buyer.

If you do not wish to exceed your bid then write "Max", for maximum, next to the amount. You can also allow us to raise your bid by approx. 15% or approx. 25%.

The hammer price may be higher or lower than the estimated price, so it is possible to buy below the estimate. Bruun Rasmussen will always buy at the lowest price possible, as if you yourself had been present at the auction.

All commission bids are strictly confidential.

Commission bids must be submitted no later than **24 hours** prior to the start of the auction.

HOW TO MAKE A COMMISSION BID:

Complete the commission form with all pertinent information.

Indicate the lot number.

Indicate the amount you are prepared to bid.

Should this amount be the absolute maximum, please write "Max" in the appropriate column.

You can also allow us to bid by up to approx. 15% or approx. 25% more by indicating so.

Sign the commission form and make sure that Bruun Rasmussen receives it **24 hours** prior to the start of the auction.

If the information should be insufficient, Bruun Rasmussen can abstain from bidding. Bruun Rasmussen can not be held responsible for error in bidding or failure to execute bids.

INTERNET:

Commission bids can be submitted via website bruun-rasmussen.dk directly from the page with the item you want to submit a bid for.

Deadline for submissions of bids via the website is **3 hours** prior to the start of the auction.

Submitted bids are shown under "Your bids" when you are logged in. Please contact technical support on +45 8818 1114 for questions about the registration and submission of bids on the website.

For additional information, please consult "Conditions of Purchase" §1.

TELEPHONE BIDDING:

Should you wish to bid at auction by telephone, please inform Bruun Rasmussen of your name and telephone number, as well as which catalogue numbers you are interested in, no later than **3 hours** prior to the start of the auction. You will then be contacted shortly before the relevant lot comes under the hammer, thereby allowing you to participate without being in the auction room yourself.

For additional information, please consult "Conditions of Purchase" §1.

Det er muligt at afgive kommissionsbud, hvis De ikke selv kan være til stede på auktionens dag. Denne service er gratis.

Når De afgiver en kommission, beder De vores kundeservice på Deres vegne byde op til et af Dem bestemt beløb i hammerslag.

Der kan opstå den situation, at en anden køber allerede har budt det beløb, som De ønsker at afgive. Er De da villig til at gå et bud højere eller er De indforstået med at nummeret sælges til anden side?

Ønsker De ikke at byde højere så skriv "Max" ud for beløbet. Er De i tvivl om hvor højt De vil byde, kan De hæve budet med op til ca. 15% eller ca. 25%.

Salgsprisen kan blive højere eller lavere end vurderingen, så der er også mulighed for at købe til under den angivne vurdering. Vor kundeservice køber altid så billigt som muligt til Dem, som havde De selv været tilstede på auktionen.

Alle kommissioner behandles strengt fortroligt.

Kommissionsbud skal være Bruun Rasmussen i hænde senest **24 timer** før auktionens start.

SÅDAN BYDER DE:

Udfyld blanketten kommissionsbud med alle oplysninger.

Angiv katalognummer.

Angiv beløbet De ønsker at byde.

Er dette Deres absolutte maximum bedes De anføre "Max" i kolonnen.

De kan også forhøje Deres bud med henholdsvis ca. 15% eller ca. 25%, ved at indikere dette i kolonnen.

De bedes underskrive kommissionsblanketten og sikre Dem, at Bruun Rasmussen modtager den senest **24 timer** før auktionens start.

Hvis Deres oplysninger ikke er tilstrækkelige, kan Bruun Rasmussen unklare at byde for Dem, ligesom Bruun Rasmussen ikke kan gøres ansvarlig for fejl ved budgivning.

INTERNET:

Kommissionsbud kan afgives på hjemmesiden bruun-rasmussen.dk direkte fra siden med den effekt, De ønsker at byde på.

Seneste afgivelse af bud via hjemmesiden er **3 timer** før auktionens start.

Afgivne bud kan ses på hjemmesiden under "Deres bud", når de er logget ind. Kontakt teknisk support på 8818 1114 for spørgsmål om registrering og budgivning via internettet.

For yderligere information, se "Købskonditioner", §1.

TELEFONBUD:

Såfremt De ønsker at byde pr. telefon, bedes De oplyse Bruun Rasmussen Deres navn og telefonnummer samt hvilke katalognumre, De ønsker at byde på, senest **3 timer** før auktionens start. De vil så blive ringet op kort før, den aktuelle vare kommer under hammeren, og De kan på denne måde deltage i auktionen uden selv at være til stede.

For yderligere information, se "Købskonditioner" på bruun-rasmussen.dk under "Guide".

COMMISSION BIDS

KOMMISSIONSBUD

BREDGADE

Skal være Bruun Rasmussen i hænde senest **24 timer** før auktionens start.
Must be submitted no later than 24 hours prior to the start of the auction.

AUKTION NR AUCTION NO: **870**

Navn Name: *

Adresse Address: *

Postnr./by City: *

Land Country: * Fax:

Tel: *

e-mail: CVR-nr. VAT No.:

Bank: Konto nr. Acct. No.:

Adresse Address:

Postnr./By City: Land Country:

Tel: Kontaktperson Contact:

Obligatoriske felter er mærket med en stjerne * *Mandatory fields are marked with an asterix **

Undertegnede giver hermed fuldmagt til Bruun Rasmussen Kunstauktioner A/S om på mine vegne at købe nedennævnte katalognumre så fordelagtigt som muligt, inden for det af mig anførte beløb, i hammerslag.
I hereby request that Bruun Rasmussen bid on my behalf on the following lots up at the prices indicated below.

Undertegnede har udfyldt ovennævnte med de ønskede oplysninger, samt har accepteret købskonditionerne.
The undersigned has supplied the required information and agrees to be bound by the conditions of purchase.

Signatur: * B.R. kunde-nr. Client No.:

Jeg ønsker at modtage salgsresultater på de emner jeg har budt på via email dagligt efter auktion
I wish to receive sales results on the items I have been bidding on via e-mail every day after the auction

på e-mail adressen on this e-mail address:

Katalog nr. Lot. No.	Beskrivelse Description	Bud kr. Bid DKK	Max	+15%	+25%

BRUUN RASMUSSEN KUNSTAUKTIONER A/S

Bredgade 33 · DK-1260 København K · Tel +45 8818 1111 · Fax +45 8818 1112 · bids@bruun-rasmussen.dk · bruun-rasmussen.dk

Fortsættes næste side *Please turn over*



