

NORDIC DESIGN

International auction 869



BRUUN RASMUSSEN

AUCTIONEERS OF FINE ART

NORDIC DESIGN

International auction 869



AUCTION

7 - 8 December 2016

PREVIEW

Thursday	24 November	3 pm - 6 pm
Friday	25 November	11 am - 5 pm
Saturday	26 November	11 am - 4 pm
Sunday	27 November	11 am - 4 pm
Monday	28 November	11 am - 5 pm

or by appointment



BRUUN RASMUSSEN

AUCTIONEERS OF FINE ART

Bredgade 33 · DK-1260 Copenhagen K · Tel +45 8818 1111
info@bruun-rasmussen.dk · bruun-rasmussen.com



Lot 1249

DAYS OF SALE

FINE ART + ANTIQUES

Tuesday	29 November		
	4 pm	Paintings and drawings Marie Krøyer's studies	1 - 144 145 - 166

ORIENTAL ART

Wednesday	30 November		
	2 pm	Oriental sale The Benjamin Wolff Collection	200 - 347 348 - 396

FINE ART + ANTIQUES

Wednesday	30 November		
	5 pm	Oriental carpets	397 - 465
Thursday	1 December		
	4 pm	Jewellery and handbags	466 - 668
	7 pm	Wristwatches	669 - 700
Friday	2 December		
	2 pm	Russian sale Furniture, clocks and bronzes Silver and ceramics	701 - 748 749 - 875 876 - 914

COBRA

Tuesday	6 December		
	4 pm	CoBrA	915 - 1036

MODERN ART

Tuesday	6 December		
	6:30 pm	Modern and contemporary paintings	1037 - 1081
Wednesday	7 December		
	2 pm	Modern paintings and sculptures Modern prints	1082 - 1213 1214 - 1239

NORDIC DESIGN

Wednesday	7 December		
	4:30 pm	Silver Ceramics	1240 - 1300 1301 - 1350
Thursday	8 December		
	4 pm	Furniture, lamps and carpets	1351 - 1508



NORDISK DESIGN

International auktion 869



AUKTION

7. - 8. december 2016

EFTERSYN

Torsdag	24. november	kl. 15 - 18
Fredag	25. november	kl. 11 - 17
Lørdag	26. november	kl. 11 - 16
Søndag	27. november	kl. 11 - 16
Mandag	28. november	kl. 11 - 17

eller efter aftale



BRUUN RASMUSSEN

KUNSTAUKTIONER

Bredgade 33 · 1260 København K · Tel +45 8818 1111
info@bruun-rasmussen.dk · bruun-rasmussen.dk



Lot 1419

AUKTIONSKALENDER

FINE ART + ANTIQUES

Tirsdag	29. november		
	kl. 16	Malerier og tegninger Marie Krøyers studier	1 - 144 145 - 166

ORIENTAL ART

Onsdag	30. november		
	kl. 14	Orientalisk kunst Benjamin Wolff-samlingen	200 - 347 348 - 396

FINE ART + ANTIQUES

Onsdag	30. november		
	kl. 17	Orientaliske tæpper	397 - 465
Torsdag	1. december		
	kl. 16 kl. 19	Smykker og dametasker Armbåndsure	466 - 668 669 - 700
Fredag	2. december		
	kl. 14	Russisk auktion	701 - 748
		Møbler, ure og bronzer	749 - 875
Sølv og keramik		876 - 914	

COBRA

Tirsdag	6. december		
	kl. 16	CoBrA	915 - 1036

MODERN ART

Tirsdag	6. december		
	kl. 18.30	Moderne kunst og samtidskunst	1037 - 1081
Onsdag	7. december		
	kl. 14	Moderne malerier og skulpturer Grafik	1082 - 1213 1214 - 1239

NORDIC DESIGN

Onsdag	7. december		
	kl. 16.30	Sølv	1240 - 1300
		Keramik	1301 - 1350
Torsdag	8. december		
	kl. 16	Møbler, belysning og tæpper	1351 - 1508



The Opening of the Preview in Bredgade 33

Thursday 24 November

Presentations in the Saleroom

4 pm “Jorn and Cobra” by Art Historian Troels Andersen

Friday 25 November

Gallery talk

2 pm “Salto and the Forces of Nature” by expert in contemporary crafts, Amalie Hansen (mezzaninen)

3 pm “From My Bungalow in Calcutta - an Introduction to Benjamin Wolff's Collection” by specialist in art on paper, Peter Titelbech (3rd floor)

Monday 28 November

Gallery talk

2 pm “Marie Krøyer – an artist in her own right?” by expert in fine art, Julie Arendse Voss (1st floor)

3 pm “Russia - a Cornucopia of Art and Antiquities” by expert in Russian art, Martin Hans Borg (1st floor)

Åbningen af eftersynet i Bredgade 33

Torsdag 24. november

Foredrag i auktionssalen

Kl. 16 “Jorn og Cobra” ved kunsthistoriker Troels Andersen

Fredag 25. november

Gallery talk

Kl. 14 “Salto og naturens kræfter” ved ekspert i moderne kunsthåndværk, Amalie Hansen (mezzaninen)

Kl. 15 “Fra min bungalow i Calcutta – en introduktion til Benjamin Wolffs samling” ved specialist i kunst på papir, Peter Titelbech (3. sal)

Mandag 28. november

Gallery talk

Kl. 14 “Marie Krøyer – en kunstner i sin egen ret?” ved ekspert i ældre malerier, Julie Arendse Voss (1. sal)

Kl. 15 “Rusland – et overflødhedshorn af kunst og antikviteter” ved ekspert i russisk kunst, Martin Hans Borg (1. sal)



Please Have a Seat

At the final international auction of the year, we can present three of the most iconic Nordic furniture classics – Alvar Aalto’s “Paimio”, Finn Juhl’s “Chieftain” and Jonas Bohlin’s “Concrete”. A common trait for the furniture pieces is the simple Nordic idiom, but they are still markedly different interpretations from three seminal periods of furniture design history.

Alvar Aalto is without doubt Finland’s most famous architect and one of the greatest pioneers within organic modernism. Between 1924 and 1929, he conducted several experiments with the bending of laminated wood and moulded veneer, which helped revolutionize modern furniture design. One of his greatest achievements is the sculptural chair “Paimio”, which was designed in 1931-32 for the tuberculosis sanatorium in the city of Paimio in the southwest of Finland. The comfortable, functional design of the chair marked the beginning of a new era that put Nordic design on the world map with its simple, soft and very human idiom. The chair embodies the best of the 1930s and appears just as modern today as when it was first introduced (cat. no. 1413).

Finn Juhl is influenced by the same design tradition as Aalto, and Juhl is world famous for his organic furniture, as well as for his design of, for instance, the trusteeship council chamber in the UN headquarters in New York, which today stands as an architectural masterpiece. Working with his long-time collaborator, cabinetmaker Niels Vodder, Juhl created some of the most distinctive and iconic furniture pieces in Danish design history, including the “Chieftain Chair”. It is regarded as the flagship of Juhl’s furniture design and embodies “Mid-century Modern” (kat.nr. 1414).

In the late 1960s there is a shift in the Nordic architects’ understanding of design, and a leader in the new postmodern era is Jonas Bohlin. He was originally trained as a civil engineer, but made a name for himself as a furniture designer as he graduated in interior design from Konstfackskolan in Stockholm in 1981, where he shocked the entire design world with his “Concrete” chair, which undoubtedly stands as one of the most iconic furniture pieces within the past 40 years in Scandinavia. The materials are steel and concrete, and the chair is certainly not comfortable to sit in. It functions more as a spatial installation and thereby distances itself from the requirement of functionality, which the art of furniture design has always been a subject to. This was a provoking design at the time, and the chair was therefore a starting point for an international discussion about the boundaries between art and applied art. At a first glance, Bohlin’s furniture stands in stark contrast to the organic idiom of earlier periods, but the design tradition’s simple expression is maintained, and in a statement on his approach to design he practically sums up the entire Nordic design tradition: *“I want my furniture to make an impression and be pleasing, communicate with time and space. They must be created with hands and the heart and they must take into account both man and nature”* (cat. no. 1420).

Sprouts, buds and rippled shapes – at this auction we will not only focus on furniture. Axel Salto is one of the most acclaimed Danish artists of the 20th century, and his efforts in the area of ceramics cannot be underestimated. He broke down the boundaries of ceramics, transforming pottery into true art. We offer a wide range of Salto’s sublime stoneware, which both in terms of quality, size, rarity and glaze represent some of his major works (e.g. cat. no. 1305 and 1307). Read more about Salto on page 66.


Jesper Bruun Rasmussen



Værsgo at sidde ned!

På årets sidste internationale auktion udbyder vi tre af Nordens mest ikoniske møbelklassikere – finske Alvar Aaltos stol "Paimio", danske Finn Juhls "Høvding" og svenske Jonas Bohlins "Concrete". Fælles for møblerne er det enkle nordiske formsprog, men der er tale om markant forskellige fortolkninger fra tre skelsættende perioder af møbelhistorien.

Alvar Aalto er ubetinget Finlands mest berømte arkitekt og én af de største pionerer inden for den organiske modernisme. Mellem 1924 og 1929 gennemførte han adskillige eksperimenter med bøjning af lamineret træ og formpresset finer, der var med til at revolutionere moderne møbeldesign. En af hans største bedrifter var den skulpturelle stol "Paimio", der blev tegnet i 1931-32 til tuberkulosesanatoriet i byen af samme navn i det sydvestlige Finland. Det komfortable og funktionelle design blev starten på en helt ny æra, der satte nordisk design på verdenskortet med sit enkle, bløde og meget menneskelige udtryk. Stolen inkarnerer det bedste fra 1930'erne og fremstår moderne den dag i dag (kat.nr. 1413).

Finn Juhl er rundet af samme designtradition som Aalto og er verdensberømt for sine organiske møbler, men også for sin indretning af bl.a. formynderkabsrådets sal i FNs hovedsæde i New York, der i dag står som et arkitektonisk hovedværk. Det var i fællesskab med sin faste samarbejdspartner, snedkermester Niels Vodder, at han skabte nogle af dansk designhistories mest ikoniske møbler, heriblandt "Høvdingestolen". Den betragtes som flagskibet blandt Juhls møbler og er indbegrebet af "Mid-century Modern" (kat.nr. 1414).

Fra slutningen af 1960'erne sker der et skred i opfattelsen af design hos de nordiske arkitekter, og i front for den nye postmoderne æra er Jonas Bohlin. Han var oprindeligt uddannet civilingeniør, men slog igennem som møbeldesigner, da han tog afgangseksamen i interiørdesign fra Konstfackskolan i Stockholm i 1981, hvor han chokerede hele designverdenen med sin stol "Concrete", der uden tvivl står som en af de mest ikoniske møbler inden for de seneste 40 år i Skandinavien. Materialerne er stål og beton, og stolen er bestemt ikke bekvem at sidde i. Den fungerer mere som en rumlig installation og fjerner sig dermed fra kravet om funktion, som møbelkunsten til alle tider har været underlagt. Det provokerede samtiden, og stolen blev startskuddet for en international diskussion om grænserne mellem kunst og brugskunst. Ved første øjekast står Bohlins møbel i stærk kontrast til tidligere tiders organiske formsprog, men designtraditionens enkle udtryk er bibeholdt, og i en udtalelse om sin tilgang til design opsummerer han nærmest hele den nordiske designtradition: *"Jeg ønsker, at mine møbler skal gøre indtryk og behage, kommunikere med tid og rum, at de skal fremstilles med hænder og hjerte, og at de skal tage hensyn til mennesket og naturen"* (kat.nr. 1420).

Spirer, knopper og riflede former – på denne auktion skal det ikke kun handle om møbler. Axel Salto står som en af de mest anerkendte danske kunstnere i det 20. århundrede, og hans indsats på det keramiske område kan ikke overvurderes. Han overskred keramikens grænser og forvandlede den fra pottemageri til egentlig kunst. Vi udbyder et bredt felt af Saltos sublime stentøj, der både hvad angår kvalitet, størrelse, sjældenhed og glasur repræsenterer nogle af hans hovedværker (fx kat.nr. 1305 og 1307). Læs mere om Salto på side 66.



Jesper Bruun Rasmussen

SPECIALISTS IN DESIGN



Head of department
Peter Kjelgaard
+45 8818 1191
pkj@bruun-rasmussen.dk



Paintings and design
Peter Beck – Aarhus
+45 8818 1186
pb@bruun-rasmussen.dk



Design
Ole Ravn
+45 8818 1192
olr@bruun-rasmussen.dk



Design
Peter Tholstrup – Aarhus
+45 8818 1195
pt@bruun-rasmussen.dk



Design
Amalie Hansen
+45 8818 1194
amh@bruun-rasmussen.dk



Paintings and design
Frederik Bruun Rasmussen
+45 8818 1003
fbr@bruun-rasmussen.dk



Design
Andreas Krabbe
+45 8818 1193
ank@bruun-rasmussen.dk



Silver and branding
Alexa Bruun Rasmussen
+45 8818 1091
alexa@bruun-rasmussen.dk



Director of sales
Kasper Nielsen
+45 8818 1121
kn@bruun-rasmussen.dk

DEADLINE FOR CLAIMING ITEMS: TUESDAY 20 DECEMBER

Items bought at Auction 869 must be paid no later than eight days from the date of the invoice and claimed on Bredgade 33 by Tuesday 20 December at the latest. Otherwise, they will be moved to Bruun Rasmussen's storage facility at Baltikavej 10 in Copenhagen at the buyer's expense and risk. This transportation will cost DKK 100 per item VAT included, and storage will cost DKK 100 per item per week VAT included.

SIDSTE FRIST FOR AFHENTNING: TIRSDAG DEN 20. DECEMBER

Effekter købt på auktion 869 skal være betalt senest 8 dage efter fakturadatoen og afhentet i Bredgade 33 senest tirsdag den 20. december. I modsat fald bliver de transporteret til Bruun Rasmussens lager på Baltikavej 10 i Københavns Nordhavn for købers regning og risiko. Transporten koster 100 kr. pr. effekt inkl. moms, og opbevaringen koster 100 kr. pr. effekt pr. påbegyndt uge inkl. moms.

SILVER

Wednesday 7 December 4:30 pm

Lot 1240 - 1300





1240

HENNING KOPPEL

b. Copenhagen 1918, d. s.p. 1981

A rare, oval sterling silver tureen and cover. Georg Jensen 1945-1977. Design no. 1104. Weight 2353 gr. H. 11 cm. W. 23 cm. L. 39 cm.

DKK 200,000-250,000 / € 27,000-33,500



1240



1241

1241
HENNING KOPPEL

b. Copenhagen 1918, d. s.p. 1981

A sterling silver coffee set. Comprising a coffeepot, a creamer and a sugar bowl. Coffeepot with guaiacum wood handle. Georg Jensen after 1945. Designed 1952. Design no. 1017. Total weight 1124 gr. H. 3,5 - 15,5 cm. (3)

Literature: David A. Taylor & Jason W. Laskey: "Georg Jensen Holloware - The Silver Fund Collection", ill. p. 304.

Literature: Janet Drucker: "Georg Jensen - A Tradition of Splendid Silver", ill. p. 230.

DKK 30,000 / € 4,050



1242

1242
JENS H. QUISTGAARD

b. Copenhagen 1919, d. 2008

"Tjørn". Sterling silver cutlery. Made and stamped by Dansk Designs Denmark. Weight excluding pieces with steel 1159 gr. (41)

Comprising:

10 dinner knives

10 dinner forks

10 dinner spoons

10 dessert spoons

1 small serving spoon

DKK 20,000-25,000 / € 2,700-3,350



1243



1243

HENNING KOPPEL

b. Copenhagen 1918, d. s.p. 1981

A rare sterling silver toast rack with oval tray. Georg Jensen 1945-1977. Design no. 474. Designed 1970. Weight 474 gr. H. 7,5 cm. L. 17,3 cm. (2)

DKK 30,000 / € 4,050

1244

HENNING KOPPEL

b. Copenhagen 1918, d. s.p. 1981

A circular sterling silver dish. Georg Jensen 1945-1977. Design no. 1132 A. Weight 1087 gr. H. 8 cm. Diam. 28,2 cm.

Literature: David A. Taylor & Jason W. Laskey: "Georg Jensen Holloware - The Silver Fund Collection", ill. p. 318.

DKK 20,000 / € 2,700



1244



1245

**1245
GUSTAV PETERSEN**

b. 1895, d. 1972

A sterling silver toast rack. Georg Jensen 1933-1944. Design no. 510. Weight 215 gr. H. 4,5 cm. L. 14,7 cm.

Literature: David A. Taylor & Jason W. Laskey: "Georg Jensen Holloware - The Silver Fund Collection", ill. p. 190. DKK 12,000-15,000 / € 1,600-2,000



1246

**1246
GEORG JENSEN**

b. Rådved 1866, d. Hellerup 1935

A small, oval silver stamp box on four stylized feet. Gilt interior, concave inner base. Top with circular blue agates. Front and back with four-sided green jaspis. Georg Jensen anno 1906. Weight 226 gr. H. 6,5 cm. W. 7,5 cm. L. 9,7 cm.

DKK 10,000 / € 1,350

1247 ^{CD}

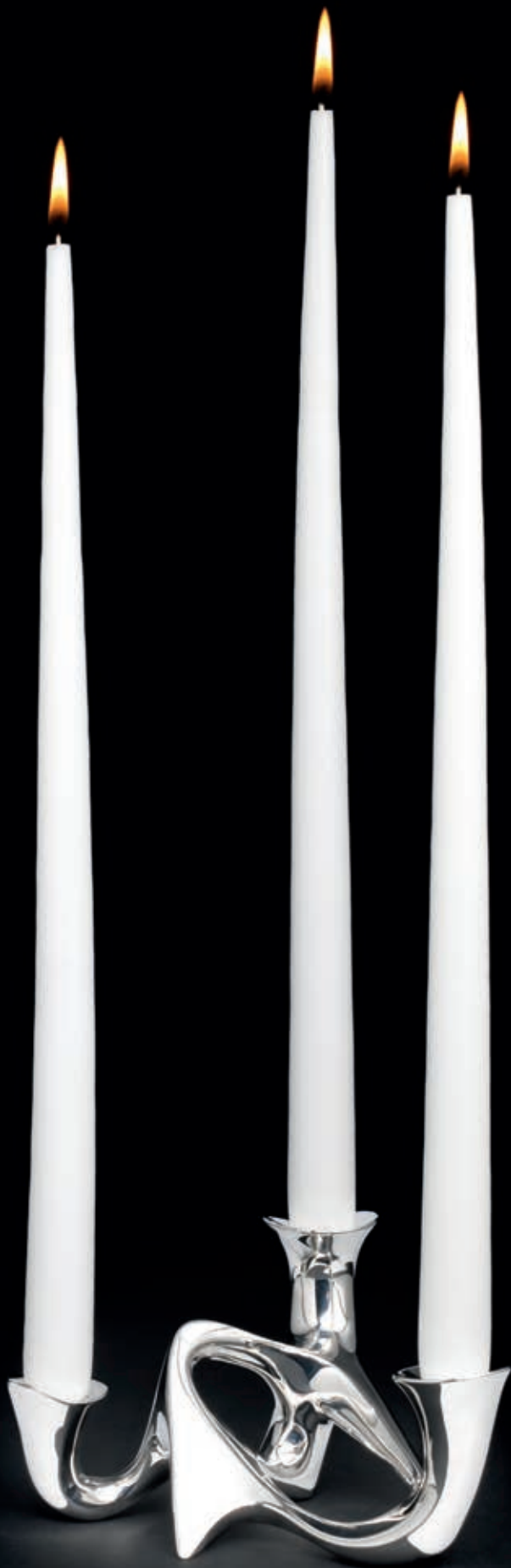
ARJE GRIEGST

b. København 1938

A sterling silver tazza and a candlestick in wind-
ed, sculptural form. Candlestick partly gilded. Tazza
signed Griegst 84, 925. Candlestick unsigned. Total
weight 595 gr. Unique. Tazza: H. 10 cm. L. 10,7 cm.
Candlestick: H. 23 cm. (2)

*Provenance: Acquired by present owner directly from
Arje Griegst in the 1980s. DKK 30,000 / € 4,050*





1248

1248

HENNING KOPPEL

b. Copenhagen 1918, d. s.p. 1981

A sculptural three-light sterling silver candelabrum. Unmarked. Designed 1946. Weight 1143 gr. H. max. 8,5 cm. L. max. 17,7 cm.

Provenance: The candlestick was a present from Henning Koppel to the current owner's grandfather, Supreme Court lawyer Mr. Povl Melchior and his wife Ms. Sara Maria Melchior, whom were close friends of Koppel.

Literature: Niels-Jørgen Kaiser: "Henning Koppels Verden", ill. and described pp. 51-54.

Literature: Viggo Sten Møller: "Henning Koppel", ill. p. 6. DKK 60,000 / € 8,050

1249

HENNING KOPPEL

b. Copenhagen 1918, d. s.p. 1981

A sculptural three-light sterling silver candelabrum. Georg Jensen 1945-1977. Design no. 956. Designed 1946. Weight 1170 gr. H. max. 8,7 cm. L. 16,8 cm.

Literature: Niels-Jørgen Kaiser: "Henning Koppels Verden", ill. p. 51-54.

Literature: Viggo Sten Møller: "Henning Koppel", ill. p. 6. DKK 60,000 / € 8,050





1250

1250

THORVALD BINDESBØLL

b. Copenhagen 1846, d. s.p. 1908

"Artichoke". A hammered sterling silver bowl. Made and stamped by A. Michelsen anno 1906. Designed 1900. Weight 367 gr. H. 8,8 cm. Diam. max. 16,5 cm.

Literature: Malene Dybbøl & Sabrina Vinther: "Hofluveler A. Michelsen - Fra Stilkopi til Arkitektsølv", ill. pp. 87-88.

DKK 50,000 / € 6,700

1251
KAY FISKER

b. Frederiksberg 1893, d. København 1965

A sterling silver water pitcher. Made and stamped by A. Michelsen, 1L. With date letter Y9=1973. Weight 650 gr. H. 24 cm.

DKK 20,000-25,000 / € 2,700-3,350



1251

1252 ©
OLE HAGEN

b. 1913, d. 1984

A sterling silver dish and cover. Finial and handle of ivory. Made and stamped by A. Michelsen. Designed 1955. Weight 828 gr. H. 11,5 cm. L. 31,2 cm.

CITES-certificate valid within the European Union included.

DKK 15,000 / € 2,000



1252



1253

1253
JOHAN ROHDE

b. Randers 1856, d. Hellerup 1935

A small hammered sterling silver bowl on a stem. Stem's upper part with openwork ornamentation and beads. The bowl's lower part with wavy pattern. Georg Jensen 1933-1944. Design no. 309. Weight 137 gr. H. 14 cm. *DKK 10,000-12,000 / € 1,350-1,600*



1254

1254
JOHAN ROHDE

b. Randers 1856, d. Hellerup 1935

A hammered sterling silver pitcher. Georg Jensen 1945-1977. Design no. 432 A. Weight 562 gr. H. 22,4 cm.

DKK 20,000 / € 2,700



1255

1255
SIGVARD BERNADOTTE

b. 1907, d. 2002

"Bernadotte". Sterling silver cutlery. Georg Jensen after 1945. Designed 1939. Weight excluding pieces with steel 3211 gr. (95)

Comprising:

12 dinner knives

12 dinner forks

8 dinner spoons

12 large tea spoons

12 tea spoons

8 child's forks/dessert forks

6 pastry forks

9 fruit knives

4 medium cold cuts forks

1 marmelade spoon

1 pie knife

1 server with steel

1 bottle opener with short handle

1 bottle opener with long handle

1 herring fork

1 citrus knife

1 salad serving set

1 salad serving set with steel

2 sauce ladles

1 steak fork

DKK 30,000 / € 4,050

1256
JOHAN ROHDE

b. Randers 1856, d. Hellerup 1935

A hammered sterling silver sauce boat. Georg Jensen 1945-1977. Design no. 43. Designed 1908. Weight 245 gr. H. 10 cm. L. 16 cm.

Literature: David A. Taylor & Jason W. Laskey: "Georg Jensen Holloware - The Silver Fund Collection", ill. p. 66.

DKK 15,000-20,000 / € 2,000-2,700



1256



1257



1258

1257
GEORG JENSEN

b. Rådvaed 1866, d. Hellerup 1935

"Blossom". Oval, hammered sterling silver tray.
Georg Jensen 1945-1977. Design no. 2 R. Designed
1908. Weight 490 gr. W. 18,9 cm. L. 31,7 cm.

DKK 15,000 / € 2,000

1258
GEORG JENSEN

b. Rådvaed 1866, d. Hellerup 1935

A pair of two-branch sterling silver candelabra.
Georg Jensen 1933-1944. Design no. 324. Total
weight 2285 gr. H. 22,2 cm. W. 25,5 cm. (2)

*Literature: Janet Drucker, "Georg Jensen. A Tradition of
Splendid Silver", ill. p. 234.*

*Literature: David A. Taylor & Jason W. Laskey: "Georg
Jensen Holloware - The Silver Fund Collection", ill. pp.
144-145.*

DKK 100,000 / € 13,500



1259

1259

HARALD NIELSEN

b. Baarse 1892, d. 1977

"Pyramid". A large, circular sterling silver dish. Georg Jensen 1933-1944. Designed 1930. Design no. 600 M. Weight 1510 gr. H. 2,3 cm. Diam. 40 cm.

Literature: David A. Taylor & Jason W. Laskey: "Georg Jensen Holloware - The Silver Fund Collection", ill. p. 212.

DKK 15,000 / € 2,000

1260
HARALD NIELSEN

b. Baarse 1892, d. 1977

"Pyramid". Sterling silver cutlery. Georg Jensen after 1945. Designed 1926. Weight excluding pieces with steel 2400 gr. (76)

Comprising:

6 dinner knives with long handle

12 dinner forks

12 luncheon knives with long handle

6 luncheon forks

12 dessert spoons

12 large tea spoons

12 pastry forks

3 coffee spoons

1 sauce ladle

DKK 25,000 / € 3,350



1260

1261
HARALD NIELSEN

b. Baarse 1892, d. 1977

Oval, hammered sterling silver sauce boat. Circular foot. Georg Jensen 1933-1944. Design no. 761. Designed 1935. Weight 282 gr. H. 9,2 cm. L. 16,5 cm.

Literature: David A. Taylor & Jason W. Laskey: "Georg Jensen Holloware - The Silver Fund Collection", ill. p. 251.

DKK 12,000 / € 1,600



1261



1262

1262
GEORG JENSEN

b. Rådvaad 1866, d. Hellerup 1935

Hammered silver tea set. Comprising a teapot, a creamer and a sugar bowl. Teapot with carved ebony finial. Georg Jensen 1915-1927. Designed 1906. Design no. 3. Total weight 1038 gr. H. 8,5 - 14,8 cm. (3) DKK 20,000 / € 2,700

1263
HARALD NIELSEN

b. Baarse 1892, d. 1977

A circular hammered sterling silver tureen and cover. Stylized finial and two carved ebony handles. Georg Jensen 1933-1944. Design no. 547 C. Weight 1070 gr. H. 13 cm. L. 28 cm.

Literature: David A. Taylor & Jason W. Laskey: "Georg Jensen Holloware - The Silver Fund Collection", ill. s. 198. DKK 15,000 / € 2,000



1263



1264

1264
GEORG JENSEN

b. Rådvaed 1866, d. Hellerup 1935

"Blossom". A circular, hammered sterling silver tray.
Georg Jensen 1945-1977. Design no. 2 Y. Weight
765 gr. H. 2,4 cm. Diam. 28 cm.

DKK 30,000 / € 4,050



1265

1265

SIGVARD BERNADOTTE

b. 1907, d. 2002

"Bernadotte". Sterling silver cutlery. Georg Jensen after 1945 Designed 1939. Weight excluding pieces with steel 2940 gr. (64)

Comprising:

12 dinner knives with long handle

12 dinner forks

12 dinner spoons

6 luncheon forks

6 dessert spoons

1 sugar spoon

11 tea spoons

1 potato spoon

1 small serving spoons

2 sauce ladles

DKK 25,000 / € 3,350



1266



1267

1266
KAY FISKER

b. Frederiksberg 1893, d. København 1965

A circular sterling silver fruit bowl with pierced thread pattern, inside with clear glass liner. Made and stamped by A. Michelsen anno 1948. Weight excluding glass liner 603 gr. H. 9,5 cm. Diam. 28 cm. *Literature: Malene Dybbøl & Sabrina Vinther: "Hofjuveler A. Michelsen - fra stillkopi til arkitektsølv", ill. p. 111.* DKK 30,000 / € 4,050

1267
ARCHIBALD KNOX

b. 1864, d. 1933

Rare Cymric Arts & Crafts sterling silver pieces for coffee set. Comprising a coffeepot, a milk pot and two small bowls with handle. With resp. carneol, turquoise and opal. All pieces stamped Cymric, L. & Co. for Liberty & Co., London. With Birmingham assay marks resp. 1902 and 1904. Milk pitcher stamped design no. 5033, bowl with turquoise design no. 2167 and bowl with carneols design no. 2166. Total weight 1025 gr. H. 3 - 21,5 cm. (4)

DKK 60,000-80,000 / € 8,050-11,000



1268

1268

GEORG JENSEN

b. Rådvaed 1866, d. Hellerup 1935

"Blossom". Hammered sterling silver coffee set. Comprising a coffee pot, a creamer with cream ladle and a sugar bowl and cover. Georg Jensen 1945-1977. Design no. 2 D. Designed 1908. Total weight 1312 gr. H. 7. - 21,5 cm. (4)

DKK 20,000 / € 2,700



1269

1269
GEORG JENSEN

b. Rådvaed 1866, d. Hellerup 1935

"Continental". Hammered sterling silver cutlery. Georg Jensen 1933-1944. Designed 1906. Weight excluding pieces with steel 3310 gr. (99)

Comprising:

12 dinner knives with short handle

12 dinner forks

12 dinner spoons

6 luncheon knives with short handle

11 luncheon forks

12 dessert spoons

12 pastry forks

12 coffee spoons

1 sugar spoons

3 medium cold cuts forks

1 herring forks

1 pie server

1 sauce ladle

1 small serving spoon

1 large serving spoon

1 salt spoon

DKK 25,000-30,000 / € 3,350-4,050



1270

1270
HARALD NIELSEN

b. Baarse 1892, d. 1977

A gilded, hammered sterling silver scent bottle. Stopper with stylized finial. Georg Jensen 1933-1944. Weight 175 gr. H. 16 cm. DKK 12,000-15,000 / € 1,600-2,000

1271
GEORG JENSEN

b. Rådvaad 1866, d. Hellerup 1935

An oval silver bowl with gilt interior. Georg Jensen anno 1919. Design no. 352. Weight 644 gr. H. 7,5 cm. W. 17 cm. L. 34,8 cm. DKK 15,000 / € 2,000



1271



1272

1272
THORVALD BINDESBØLL

b. Copenhagen 1846, d. s.p. 1908

"Artichoke". A hammered sterling silver bowl. Signed monogram. Made and stamped by A. Michelsen anno 1926. Designed 1900. Weight 366 gr. H. 9 cm. Diam. 16,5 cm.

Literature: Malene Dybbøl & Sabrina Vinther: "Hofluveler A. Michelsen - Fra Stilkopi til Arkitektsølv", ill. pp. 87-88.

DKK 50,000 / € 6,700



1273

HARALD NIELSEN

b. Baarse 1892, d. 1977

"Pyramid". Sterling silver cutlery. Georg Jensen 1926-1927, 1929-1934, 1933-1944 and after 1945. Designed 1926. Weight excluding pieces with steel 5249 gr. (113)

Comprising:

- | | |
|------------------------|-----------------------------|
| 17 dinner forks | 1 porridge spoon |
| 15 dinner spoons | 1 tomato knife |
| 17 luncheon forks | 1 cheese plane |
| 17 dessert spoons | 1 herring fork |
| 6 fruit knives | 1 small salad set with horn |
| 8 pastry forks | 1 pie knife |
| 13 coffee spoons | 1 tea strainer |
| 2 child's spoons | 1 steak fork |
| 2 child's forks | 1 sauce ladle |
| 2 marmelade spoons | 1 salt spoon |
| 1 small serving spoon | 1 soup ladle |
| 1 medium serving spoon | |
| 1 large serving spoon | |

DKK 30,000 / € 4,050

1274

HARALD NIELSEN

b. Baarse 1892, d. 1977

A hammered sterling silver cocktail shaker. Cover with leaf and berry finial. Georg Jensen 1945-1951. Design no. 462 C. Weight 905 gr. H. 31 cm.

Literature: David A. Taylor & Jason W. Laskey: "Georg Jensen Holloware - The Silver Fund Collection", ill. p. 177.

DKK 30,000 / € 4,050



1274

1275

HARALD NIELSEN

b. Baarse 1892, d. 1977

Oval sterling silver tray with profiled rim. Georg Jensen 1945-1977. Design no. 875 C. Weight 1592 gr. H. 1,8 cm. W. 35 cm. L. 43,2 cm.

DKK 25,000 / € 3,350



1275



1276

1276
GEORG JENSEN

b. Rådvaed 1866, d. Hellerup 1935

A circular sterling silver sauce boat with beaded rim. Georg Jensen 1945-1977. Design no. 290 C. Weight 480 gr. H. 11,8 cm. Diam. 16,3 cm. *DKK 10,000 / € 1,350*

1277
GEORG JENSEN

b. Rådvaed 1866, d. Hellerup 1935

A circular hammered sterling silver tray with curved handles. Georg Jensen 1933-1944. Design no. 847. Weight 1031 gr. H. 2,3 cm. L. 38 cm. *DKK 30,000 / € 4,050*



1277



1278

1278

GEORG JENSEN

b. Rådvaed 1866, d. Hellerup 1935

"Continental". Hammered sterling silver cutlery. Georg Jensen after 1945. Designed 1906. Weight excluding pieces with steel 3435 gr. (86)

Comprising:

12 dinner knives with long handle

12 dinner forks

11 luncheon knives with long handle

11 luncheon forks

12 dessert spoons

11 tea spoons

12 pastry forks

1 medium serving spoon

1 server

1 vegetable fork

1 salad set with steel

1 sauce ladle

DKK 30,000 / € 4,050

1279

JOHAN ROHDE

b. Randers 1856, d. Hellerup 1935

A hammered sterling silver pitcher. Georg Jensen 1933-1944. Design no. 432 A. Weight 541 gr. H. 23 cm.

DKK 25,000 / € 3,350



1279



1280

1280
GEORG JENSEN

b. Rådvaed 1866, d. Hellerup 1935

A hammered sterling silver tazza with grapes. Spiral fluted stem and circular foot. Georg Jensen 1925-1932. Design no. 263 B. Designed 1918. Weight 554 gr. H. 19 cm.

DKK 18,000-20,000 / € 2,400-2,700

1281
HARALD NIELSEN

b. Baarse 1892, d. 1977

"Old Danish". Sterling silver cutlery. Georg Jensen after 1945. Designed 1947. Weight excluding pieces with steel 1873 gr. (59)

Comprising:

5 dinner knives with long handle and serrated blade

6 large dinner forks

12 luncheon knives with long handle and serrated blade

15 luncheon forks

6 dessert spoons

6 bouillon spoons

5 pastry forks

4 butter knives *DKK 20,000 / € 2,700*



1281



1282

1282
GEORG JENSEN

b. Rådvaed 1866, d. Hellerup 1935

A pair of hammered sterling silver wine coasters. Sides with grapes and leaves. Base of carved mahogany. Georg Jensen 1945-1977. Design no. 229. Designed 1920. Total weight 1237 gr. H. 6,6 cm. Diam. 14. (2) DKK 50,000-60,000 / € 6,700-8,050



1283
JOHAN ROHDE

b. Randers 1856, d. Hellerup 1935

A hammered silver centrepiece, openwork stem with leaves, clusters and beads. Georg Jensen 1915-1930. Design no. 196. Weight 1120 gr. H. 21,5 cm.

DKK 25,000 / € 3,350

1283



1284

1284

GEORG JENSEN

b. Rådvaad 1866, d. Hellerup 1935

A circular hammered sterling silver centrepiece. Openwork stem with leaves and grapes. Georg Jensen 945-1951. Design no. 197 A. Weight 746 gr. H. 15,5 cm. Diam. 20 cm. DKK 10,000/€ 1,350



1285

1285

HARALD NIELSEN

b. Baarse 1892, d. 1977

A round sterling silver sugar sifter. Georg Jensen 1925-1932. Design no. 645. Weight 235 gr. H. 11,5 cm. Literature: David A. Taylor & Jason W. Laskey: "Georg Jensen Holloware - The Silver Fund Collection", ill. p. 231. DKK 10,000-12,000/€ 1,350-1,600



1286

1286
GEORG JENSEN

b. Rådvald 1866, d. Hellerup 1935

A circular hammered sterling silver fruit dish with stylized ornaments and beaded rim. Georg Jensen 1925-1932. Designed 1919. Design no. 320 A. Weight 1102 gr. H. 4,2 cm. Diam. 36,4 cm.

Literature: David A. Taylor & Jason W. Laskey: "Georg Jensen Holloware - The Silver Fund Collection", ill. p. 141.

DKK 30,000-40,000 / € 4,050-5,400

1287
JOHAN ROHDE

b. Randers 1856, d. Hellerup 1935

"Acorn". Sterling silver cutlery. Georg Jensen after 1945. Designed 1915. Weight excluding pieces with steel 4720 gr. (172)

Comprising:

5 lobster forks

14 dinner knives with long handle

13 dinner forks

14 luncheon knives with long handle

14 luncheon forks

14 dessert spoons

6 fruit knives

14 pastry forks

13 large tea spoons

6 tea spoons

13 coffee spoons

6 mocha spoons

4 butter knives

1 long sugar shovel

1 short sugar shovel

1 sugar tongs

1 marmelade spoon

1 ice tongs

1 caviar spoon with horn

1 medium serving spoon

1 large vegetable fork

1 large vegetable spoon

1 cheese plane

1 citrus knife

1 grape fruit spoon

1 herring fork

2 short cold cuts forks

4 long cold cuts forks

1 canapé server

1 server with steel

1 fried egg server

1 small salad serving set with steel

1 long bottle opener

2 cork screws

1 nut cracker

1 game shears

1 fish serving set

2 sauce ladles

1 steak fork

1 carving set

3 salt spoons

DKK 50,000-60,000 / € 6,700-8,050





1287



1288

1288 ©

KARL GUSTAV HANSEN

b. Kolding 1914, d. 2002

A sterling silver teapot. Handle and finial of ivory. Made and stamped by Hans Hansen anno 1961. Design no. 454. Weight 855 gr. H. incl. handle 19,2 cm.

Literature: Jörg Schwandt: "Karl Gustav Hansen Sølv/Silber 1930-1994", Museet på Koldinghus, model ill. p. 185.

CITES-certificate valid within the European Union included.

DKK 20,000 / € 2,700



1289

1289

HARALD NIELSEN

b. Baarse 1892, d. 1977

"Pyramid". Sterling silver and silver cutlery. Georg Jensen 1926–1930, 1933–1944 and after 1945. Designed 1926. Weight excluding pieces with steel 5368 gr. (140)

Comprising:

12 fish knives

2 lobster forks

11 large dinner knives with short handle
(steel blades in two different lengths)

1 extra large dinner knife with short handle

12 dinner forks

12 dinner spoons

12 luncheon forks

12 dessert spoons

12 pastry forks

14 fruit knives

2 fruit forks

12 tea spoons

4 coffee spoons

1 cream ladle

1 sugar tongs

1 sugar spoon

1 mustard spoon

1 butter knife with horn

1 herring fork with steel

1 herring fork with horn

1 orange knife

1 nut cracker

1 tomato knife with horn

1 salad fork with horn

1 server

1 large serving spoon

1 medium cold cuts fork

1 patty shell server

1 fish serving set

1 soup ladle

1 sauce ladle

1 steak fork

3 salt spoons

DKK 60,000 / € 8,050



1290

1290

KAY BOJESEN

b. København 1886, d. Gentofte 1958

"Grand Prix". Sterling silver cutlery. Made and stamped by Kay Bojesen. Designed 1938. Weight excluding pieces with steel 3117 gr. (81)

Comprising:

8 dinner forks

8 dinner knives

16 luncheon forks

16 luncheon knives

8 bouillon spoons

8 dessert spoons

8 tea spoons

1 fish serving set

1 large steak fork

1 steak fork

1 porridge spoon

1 potato spoon

1 small serving spoon

1 sauce ladle

1 mayonnaise ladle

1 server

DKK 40,000 / € 5,400



1291

1291 ©

IB BLUITGEN

b. 1921, d. 2013

Sterling silver teapot with ivory finial. Georg Jensen 1945-1977. Designed 1951. Design no. 984 B . Weight 875 gr. H. incl. handle 20 cm.

CITES-certificate valid within the European Union included.

Literature: David A. Taylor & Jason W. Laskey: "Georg Jensen Holloware - The Silver Fund Collection", ill. p. 297.

DKK 25,000 / € 3,350

1292

SØREN GEORG JENSEN

b. Copenhagen 1917, d. s.p. 1982

A pair of sterling silver candlesticks. Georg Jensen 1945-1977. Design no. 1141. Weight 233 gr. H. 10 cm. Inner diam. of candle holders 2,2 cm. (2)

Literature: Janet Drucker: "Georg Jensen - A Tradition of Splendid Silver", ill. p. 233.

DKK 10,000 / € 1,350



1292



1293

1293

TIAS ECKHOFF

b. Vestre Slidre 1926

"Cypress". Sterling silver cutlery. Georg Jensen after 1945. Designed 1953. Weight excluding pieces with steel 3431 gr. (126)

Comprising:

6 lobster forks

12 fish knives

12 luncheon forks

12 dinner knives

12 tea spoons

12 soup spoons

12 luncheon knives

12 dinner knives

2 butter knives

12 dessert spoons

12 pastry forks

1 cream ladle

1 sauce ladle

2 bottle openers

2 steak forks

2 salt spoons

1 potato spoon

1 vegetable fork

DKK 30,000 / € 4,050



1294
SIGVARD BERNADOTTE

b. 1907, d. 2002

A sterling silver strawberry set comprising a strawberry bowl and a cream pitcher. Georg Jensen 1945-1977. Design no. 856 A and 856 B. Total weight 1022 gr. Bowl: H. 7 cm. Diam. 22,4 cm. Cream pitcher: H. 16,9 cm. (2)

Literature: David A. Taylor & Jason W. Laskey: "Georg Jensen Holloware - The Silver Fund Collection", ill. p. 278.

DKK 30,000-40,000 / € 4,050-5,400



1295

1295

SIGVARD BERNADOTTE

b. 1907, d. 2002

A sterling silver dish and cover. Handle and finial of carved ebony. Georg Jensen 1925-1932. Designed 1942. Design no. 909. Weight 558 gr. L. 26,5 cm.

Literature: David A. Taylor & Jason W. Laskey: "Georg Jensen Holloware - The Silver Fund Collection", ill. p.

286.

DKK 25,000 / € 3,350



1296

1296
SIGVARD BERNADOTTE

b. 1907, d. 2002

"Bernadotte". Sterling silver cutlery. Georg Jensen 1933-1944 and after 1945. Designed 1939. Weight excluding pieces with steel 3200 gr. (100)

Comprising:

<i>12 dinner knives</i>	<i>8 tea spoons</i>
<i>12 dinner forks</i>	<i>7 pastry forks</i>
<i>12 dinner spoons</i>	<i>1 medium cold cuts fork</i>
<i>12 luncheon forks</i>	<i>3 short cold cuts fork</i>
<i>12 dessert spoons</i>	<i>1 steak fork</i>
<i>12 fruit knives</i>	<i>1 salt spoon</i>
<i>7 coffee spoons</i>	

DKK 30,000 / € 4,050



1297

1297
GEORG JENSEN

b. Rådvaed 1866, d. Hellerup 1935

Oval sterling silver sauce boat with ornamentation. Georg Jensen 1925-1932. Design no. 393 B. Designed 1917. Weight 537 gr. H. 12 cm. W. 14,5 cm. L. 20,5 cm. *Literature: David A. Taylor & Jason W. Laskey: "Georg Jensen Holloware - The Silver Fund Collection", ill. p. 111.*

DKK 30,000 / € 4,050

1298
JOHAN ROHDE

b. Randers 1856, d. Hellerup 1935

"Acorn". Sterling silver cutlery. Georg Jensen after 1945. Designed 1915. Weight excluding pieces with steel 3045 gr. (99)

Comprising:

- 14 dinner knives with long handle
- 14 dinner forks
- 12 dinner spoons
- 14 luncheon knives with long handle
- 14 luncheon forks
- 14 dessert spoons
- 11 coffee spoons
- 4 pastry forks
- 1 pie knife
- 1 fried egg server

DKK 30,000-40,000 / € 4,050-5,400



1298



1299

1299
GEORG JENSEN

b. Rådvald 1866, d. Hellerup 1935

A large hammered sterling silver tazza with grapes. Spiral fluted stem and circular foot. Georg Jensen 1945-1977. Design no. 263 A. Weight 1261 gr. H. 26,6 cm.

DKK 50,000 / € 6,700



1300

1300
SIGVARD BERNADOTTE

b. 1907, d. 2002

"Bernadotte". Sterling silver cutlery. Georg Jensen after 1945. Designed 1939. Weight excluding pieces with steel 4792 gr. (113)

Comprising:

12 lobster forks

12 fish forks

12 fish knives

12 dinner knives with long handle

12 dinner forks

12 dinner spoons

12 luncheon knives with long handle

12 luncheon forks

6 coffee spoons

4 long cold cuts forks

1 medium cold cuts fork

1 short cold cuts fork

1 steak fork

1 sauce ladle

1 large serving spoon

1 potato spoon

1 bread knife

DKK 40,000 / € 5,400

CERAMICS

Wednesday 7 December

Lot 1301 - 1350



Lot 1307

1301 ^{CD}

PER WEISS

b. Melby 1953

A stoneware floor vase. Exterior with winding decor in light brown and white glaze, some bluish green elements. Stamped monogram. Unique. H. 52 cm. Diam. 36 cm. DKK 30,000-40,000 / € 4,050-5,400



1301

1302 ^{CD}
PER WEISS

b. Melby 1953

A stoneware floor vase. Exterior decorated with winding decor in white, reddish-brown and blue glaze. The inside decorated with black glaze. Stamped monogram. Unique. H. 58 cm.

DKK 25,000 / € 3,350



1302

1303 ^{CD}

PER WEISS

b. Melby 1953

A stoneware floor vase. Exterior with winding decor in green and blue glaze on a white glazed base. Inside decorated with black glaze. Stamped monogram. Unique. H. 67 cm. *DKK 50,000 / € 6,700*



1303

1304 ^{CD}

AXEL SALTO

b. Copenhagen 1889, d. Frederiksberg 1961

Conical shaped stoneware vase. Modelled with barley straw in relief and decorated with grey glaze with green elements. Made at Carl Halier's workshop. Signed Salto 1930. H. 38 cm. Lower diam. 27 cm.

DKK 30,000-40,000 / € 4,050-5,400



1304

Salto's

Sublime Stoneware

Sprouts, buds and rippled shapes – Axel Salto (1889–1961) is one of the most highly acclaimed Danish artists of the 20th century, and his influence in the world of ceramics cannot be underestimated. He broke down the boundaries of ceramics, transforming pottery into actual art.

Starting Point in Pictorial Art and an Active Cultural Commentator

Salto had a diverse background as an academy-trained painter. Along with other notable Danish artists such as Vilhelm Lundstrøm, Svend Johansen and Karl Larsen, he subscribed to the contemporary call to renew art, and together they formed the art group “De Fire” (The four), whose exhibitions created an uproar on the Danish art scene.

Pulling no punches, Salto also involved himself in the cultural debate of the day – primarily as editor and publisher of the Danish art journal “Klingen”. Published from 1917-20, the journal featured prominent Danish writers such as Otto Gelsted, Emil Bønnelycke and Poul Henningsen. Together they voiced their disdain for retrospective art, and the journal came to be the mouthpiece of modernist art and literature in Denmark.

Creating in the Spirit of Nature

Salto first began working with ceramics in 1923, making a name for himself after presenting a number of works at the World Exhibition in Paris in 1925. Salto's credo was “to create in the spirit of nature”, and his characteristic idiom attained new dimensions during his collaboration with The Royal Porcelain Factory in Copenhagen, from the mid-1930s to the late 1950s. The rippled, budding and sprouting style is characteristic of Axel Salto's organic stoneware, which is primarily inspired by the creative forces of nature. He moved from the rippled style of his early stoneware from 1929-30, to the budding style inspired by organic fruit shapes, to the sprouting style, which was directly inspired by natural growth and became the culmination of his artistic expression. From the mid-1930s, Salto also moved towards a type of oriental mysticism, which invoked the inherent power of objects, casting a subtle philosophical tinge over his stoneware. It wasn't about imitating nature, but rather recreating its spirit. The Royal Porcelain Factory continued to produce Salto's stoneware until 1985.

When the Kiln Was Opened

Salto's art is said to have its roots in expressionism. In his writing, works and speeches, he showed his contempt for caution and half-measures and admired uncompromising artists. He was attracted by danger and the promise of wonder, which was particularly apparent when the kiln containing new stoneware was being opened. It was not the heat in the porcelain factory that made his face glow, but rather the anticipation of seeing whether the inherent power of nature had manifested itself in his stoneware.





1305
AXEL SALTO

b. Copenhagen 1889, d. Frederiksberg 1961

A large, very impressive stoneware vase modelled in fluted and budded style. Three-sided. Decorated with blue mussel glaze. Signed Salto, 21323. Royal Copenhagen. Made 1956. H. 45 cm.

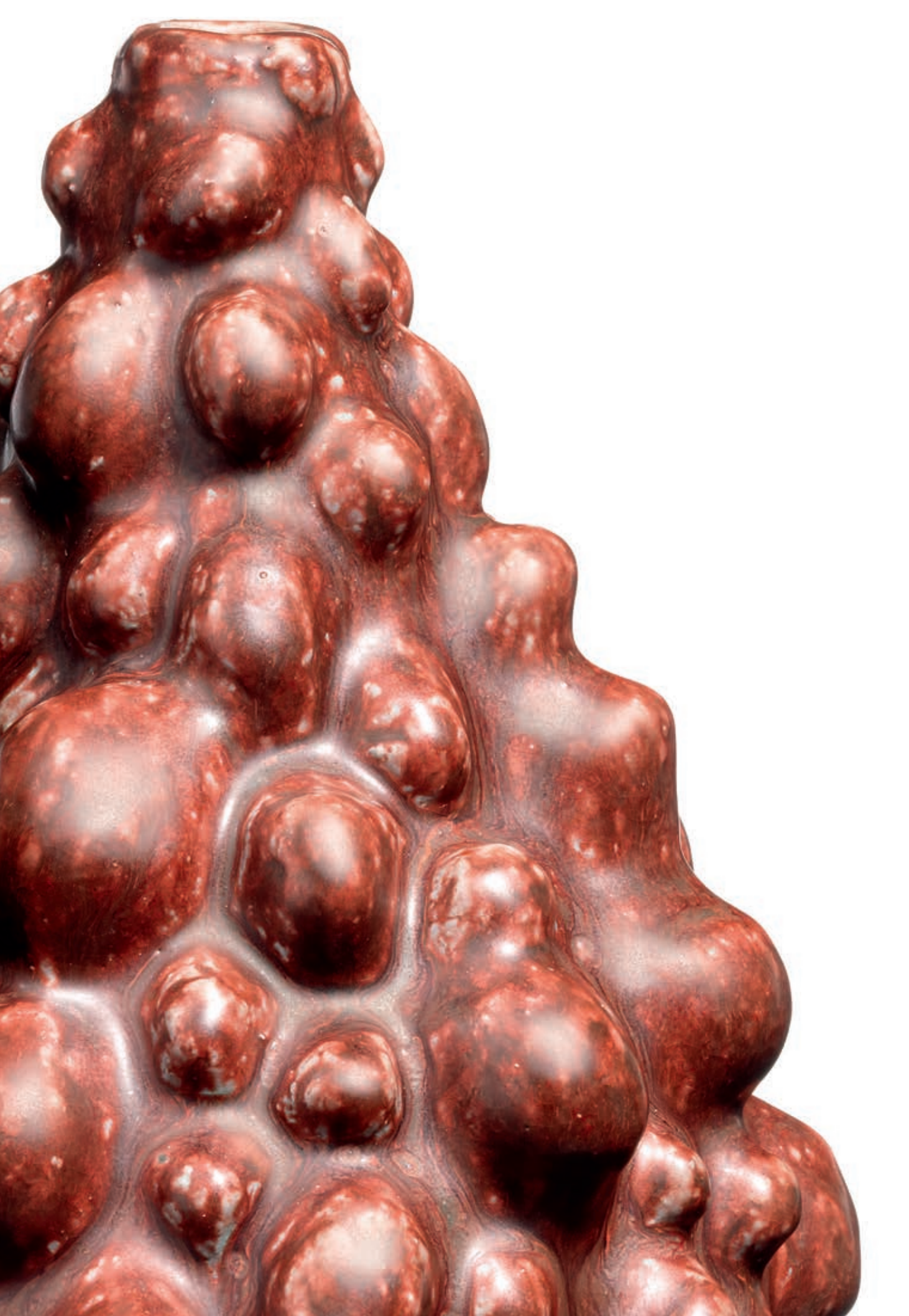
A similar variant is included in the collection of Royal Copenhagen.

Literature: Leif Lautrup-Larsen: "Stentøj - Den Kongelige Porcelainsfabrik", the model ill. p. 169.

DKK 400,000-600,000 / € 54,000-80,500



1305





1306

1306
AXEL SALTO

b. Copenhagen 1889, d. Frederiksberg 1961

A stoneware vase modelled in budded style and with narrow mouth. Decorated with oxblood glaze. Signed Salto, 21471. Royal Copenhagen. H. 21 cm.

DKK 60,000-80,000 / € 8,050-11,000





1307

1307
AXEL SALTO

b. Copenhagen 1889, d. Frederiksberg 1961

A strong and rare, large fruit shaped stoneware vase with small mouth. Modelled in the sprouting style and decorated with oxblood glaze. Model 20819. Signed Salto. Royal Copenhagen. H. 33,5 cm.

DKK 350,000-400,000 / € 47,000-54,000



1308

1308
ARNE BANG

b. Frederiksberg 1901, d. Fensmark 1983

Two small stoneware lid jars, exteriors modelled with leaves and branches. Decorated with resp. blue glaze with green and grey elements and with green glaze with greyish brown and blue elements. Signed monogram, 181. Concave patinated bronze lids. H. resp. 11,5 cm. and 12 cm. (2)

DKK 10,000 / € 1,350

1309
ARNE BANG

b. Frederiksberg 1901, d. Fensmark 1983

A circular stoneware bowl, exterior with fluted pattern. Decorated with greyish brown glaze with some dark brown elements. Signed monogram, 114. H. 12,6 cm. Diam. 31 cm. *DKK 30,000 / € 4,050*



1309



1311



1310

1310 ^{CD}
NILS THORSSON

b. Eslöv, Skåne County 1898

KNUD ANDERSEN

d. 1975, b. Nørresundby 1945

A stoneware lid jar decorated with oxblood glaze. Signed monogram. Royal Copenhagen. Lid and base of patinated and partly gilded bronze. Lid stamped monogram KA for Knud Andersen. Royal Copenhagen. Unique. H. 25 cm.

DKK 50,000 / € 6,700

1311 ^{CD}
GEORG THYLSTRUP

b. Roskilde 1884, d. København 1930

PATRICK NORDSTRÖM

b. Höganäs 1870, d. Copenhagen 1929

A gourd-shaped stoneware lid jar. Decorated with oxblood glaze. Signed monogram, S 704. Royal Copenhagen. Patinated bronze lid with stylized leaves. Unique. H. 16 cm.

DKK 12,000-15,000 / € 1,600-2,000



1312



1313



1314



1315

1312 ^{CD}

JEAN RENÉ GAUGUIN

b. Paris 1881, d. Copenhagen 1961

A roche ceramique figure. Modelled in the shape of a female holding a child. Partly decorated with matt glazes. Base inscribed: "Sov barn - snart dysses dag til blund, i Vest i solnedgangens stund" ("Sleep child - soon day turns to slumber, in the West in the hour of Sunset"). Signed R. Gauguin 1939. Made and signed by Bing & Grøndahl. Unique. H. including base 72,5 cm. *DKK 15,000 / € 2,000*

1313 ^{CD}

JEAN RENÉ GAUGUIN

b. Paris 1881, d. Copenhagen 1961

A roche ceramique figure modelled in the shape of a female holding fruits and a monkey. Partly decorated with matt glazes. Base inscribed: "Lysende kvinde med frugter i favn sol er dit væsen syd er dit navn" ("Luminous female with fruits in your arms sun is your nature south is your name"). Signed R. Gauguin 1939. Made and signed by Bing & Grøndahl. Unique. H. incl. base 74 cm. *DKK 15,000 / € 2,000*

1314 ^{CD}

JEAN RENÉ GAUGUIN

b. Paris 1881, d. Copenhagen 1961

A roche ceramique figure modelled in the shape of a male holding a rooster. Partly decorated with matt glazes. Base inscribed: "Hanegal ved morgengry indvarsler mandens id paany" ("Cockcrow at dawn ushers in the man's effort once more"). Signed R. Gauguin 1939. Made and signed by Bing & Grøndahl. Unik. H. incl. socket 74 cm. *DKK 15,000 / € 2,000*

1315 ^{CD}

JEAN RENÉ GAUGUIN

b. Paris 1881, d. Copenhagen 1961

A roche ceramique figure modelled in the shape of an Inuit. Partly decorated with matt glazes. Base inscribed: "I Nordens tavse, hvide nat faa øvet fangstmand byttet fat" ("In the silence of the North's white night, experienced trapper grabs of the catch"). Signed R. Gauguin 1939. Made and signed by hos Bing & Grøndahl. Unique. H. including base 72. *DKK 15,000 / € 2,000*



1316

1316
THORVALD BINDESBØLL

b. Copenhagen 1846, d. s.p. 1908

A circular earthenware dish with scratched formations. Decorated with resp. cream coloured and dark brown glaze, a few blue elements. Signed monogram, 1881. Unique. H. 5 cm. Diam. 42,5 cm.

DKK 20,000-30,000 / € 2,700-4,050

1317

THORVALD BINDESBØLL

b. Copenhagen 1846, d. s.p. 1908

A pair of earthenware vases with incised ornamentation. Decorated with black glaze with green elements and with cream coloured glaze. Signed TB 1899. Unika. H. resp. 34,5 cm. and 35 cm. (2)

DKK 80,000-100,000 / € 11,000-13,500





1318

These lots are three unique examples of Lin Utzon's signature style ceramics. Her work has been described with these words:

"Nature is the overriding source of inspiration for Lin Utzon. Through a body of artistic work spanning almost 40 years, she has worked with an unusually broad spectrum of expression, where the tension between light and shadow, poetry and precision appears to form a special driving force for her work. This applies not only to her monumental architectural decorations but also to her design work, paintings, ceramics and porcelain".

Lin Utzon & Inge Dybbro: "Lin Utzon - Udsmykninger - unikaværker i porcelæn og keramik - malerier", p. 5.



1319



1320

1318
LIN UTZON

b. Frederiksberg 1946

A circular porcelain vase, partly decorated with dark blue and silver glaze. Signed Lin Utzon. Made for Royal Copenhagen. Unique. H. 18 cm. Diam. 28 cm.

DKK 30,000 / € 4,050

1319
LIN UTZON

b. Frederiksberg 1946

A circular porcelain bowl. Decorated with transparent glaze, exterior with blue glazed decor. Signed Lin Utzon. Royal Copenhagen. Made for Royal Copenhagen. Unique. H. 15 cm. Diam. 33,5 cm.

Literature: Lin Utzon & Inge Dybbro: "Lin Utzon - Udsmykninger - unikaværker i porcelæn og keramik - malerier", ill. p. 84.

DKK 20,000-25,000 / € 2,700-3,350

1320
LIN UTZON

b. Frederiksberg 1946

A cylindrical porcelain vase, partly decorated with blue and silver coloured glaze. Signed Lin Utzon. Made for Royal Copenhagen. Unique. H. 33,5 cm. Diam. 27,5 cm.

Literature: Lin Utzon & Inge Dybbro: "Lin Utzon - Udsmykninger - unikaværker i porcelæn og keramik - malerier", ill. p. 82.

DKK 40,000 / € 5,400



1321

1321 ^{CD}
GERTRUD VASEGAARD

b. Rønne 1913

MYRE VASEGAARD

d. 2007, b. 1936, d. 2006

A cylindrical stoneware vase decorated with blue glazed geometric decor and transparent glaze. Signed monograms. Unique. H. 17,2 cm. Diam. 19,2 cm.

DKK 10,000-12,000 / € 1,350-1,600



1322

1322 ^{CD}

GERTRUD VASEGAARD

b. Ronne 1913, d. 2007

A circular stoneware dish decorated with bluish grey glazed, geometric decor and transparent glaze. Signed monogram. Unique. H. ca. 9,5 cm. Diam. 35. - 35,5. *DKK 15,000 / € 2,000*

1323

VICKE LINDSTRAND

b. Sweden 1904, d. 1983

"Träd i dimma"/"Trees in fog". A clear glass vase with opal glass underlay. Inlaid with black violet "trees". Signed Kosta LU 2005. Made by Kosta, Sweden 1950s. H. max. 32,2 cm.

Literature: Helmut Ricke & Ulrich Gronert: "Glas in Schweden 1915-1960", ill. p. 222.

DKK 25,000-30,000 / € 3,350-4,050



1323

1324

TAPIO WIRKKALA

b. 1915, d. 1985

"Inari". A large mould blown bowl of clear glass. Signed Tapio Wirkkala, 3543. Made by Iittala, Finland. H. 17,3 cm. W. 31 cm. L. 36,5 cm.

Literature: Marianne Aav: "Iittala - 125 Years of Finnish Glass", ill. p. 248. DKK 12,000 / € 1,600

1325

GUNNEL NYMAN

b. 1909, d. 1948

"Ylösousemus"/"Resurrection". A vase of clear, twirled crystal glass. Signed Gunnel Nymann, Iittala. Designed 1947. Made circa 1947-50. H. 39,7 cm.

Literature: Marianne Aav: "Iittala - 125 Years of Finnish Glass", ill. pp. 124-125 and p. 221.

DKK 60,000-80,000 / € 8,050-11,000



1324



1325



1326 ^{CD}

ARJE GRIEGST

b. København 1938

A sculptural and wined, three-light candelabrum of patinated bronze. Signed Griegst 87. Unique. H. 31 cm. L. max. 35 cm.

Provenance: Acquired by present owner directly from Arje Griegst.

Literature: Kerstin Wickman: "Arje Griegst - Guldsmed, designer og billedhugger", this very candelabrum is ill. p. 276-277. DKK 30,000 / € 4,050





1327

AXEL SALTO

b. Copenhagen 1889, d. Frederiksberg 1961

A gourd-shaped stoneware table lamp, decorated with light greyish brown glaze with light grey elements. Signed Salto. H. excluding socket 36,5. H. including socket 48 cm. *DKK 20,000 / € 2,700*

1328

AXEL SALTO

b. Copenhagen 1889, d. Frederiksberg 1961

A gourd-shaped stoneware vase decorated with oxblood glaze. Signed Salto. Royal Copenhagen. H. 18 cm. *DKK 15,000-20,000 / € 2,000-2,700*

1329

AXEL SALTO

b. Copenhagen 1889, d. Frederiksberg 1961

A gourd-shaped stoneware vase decorated with olivin glaze. Signed Salto. Royal Copenhagen. H. 22,5 cm. *DKK 20,000 / € 2,700*

1327



1329



1328



1330

1330
AXEL SALTO

b. Copenhagen 1889, d. Frederiksberg 1961

A fruit shaped stoneware vase modelled with a narrow spout. Decorated with sung glaze. Sigend Salto, 20818. Royal Copenhagen. Made 1965. H. 22 cm.

DKK 80,000 / € 11,000



1331

1331
AXEL SALTO

b. Copenhagen 1889, d. Frederiksberg 1961

A circular stoneware vase, partly modelled with fluted pattern. Decorated with beige and grey glaze and some dark brown elements. Signed Salto. Royal Copenhagen. H. 16 cm. Diam. 18,5 cm.

DKK 30,000 / € 4,050

1332
AXEL SALTO

b. Copenhagen 1889, d. Frederiksberg 1961

A large, circular stoneware bowl. Exterior with horizontal leaf patterns. Decorated with light greyish green glaze with brown elements. Signed Salto, 1936. Royal Copenhagen. H. 14,5 cm. Diam. 35 cm.

DKK 25,000 / € 3,350



1332



1333

1333 ^{CD}

CARL HALIER

b. 1873, d. 1948

KNUD ANDERSEN

b. 1892, d. 1966

A cylindrical stoneware lid jar. Decorated with dilou glaze. Signed monogram. Royal Copenhagen. Lid and stand of patinated and partly gilded bronze. Stamped monogram KA for Knud Andersen. Royal Copenhagen. Unique. H. 24 cm.

DKK 30,000 / € 4,050



1334

1334

GEORG THYLSTRUP

b. Roskilde 1884, d. København 1930

PATRICK NORDSTRÖM

b. Höganäs 1870, d. Copenhagen 1929

A stoneware lid jar decorated with green and brown glaze with blue elements. Signed monogram, 22-6 1917. Royal Copenhagen. With lid of patinated bronze, finial with cabochon-cut malachite. Unique. H. 17,5 cm.

DKK 20,000 / € 2,700



1335

1335 [Ⓜ]

GERD BØGELUND

b. Gentofte 1923, d. 1987

A circular stoneware vase, exterior modelled with incised leaf patterns. Inside's base modelled with a circular flower stand. Decorated with solfatara glaze. Signed monogram. Royal Copenhagen. Made 1969-1974. H. 23 cm. Diam. 36 cm.

DKK 25,000 / € 3,350

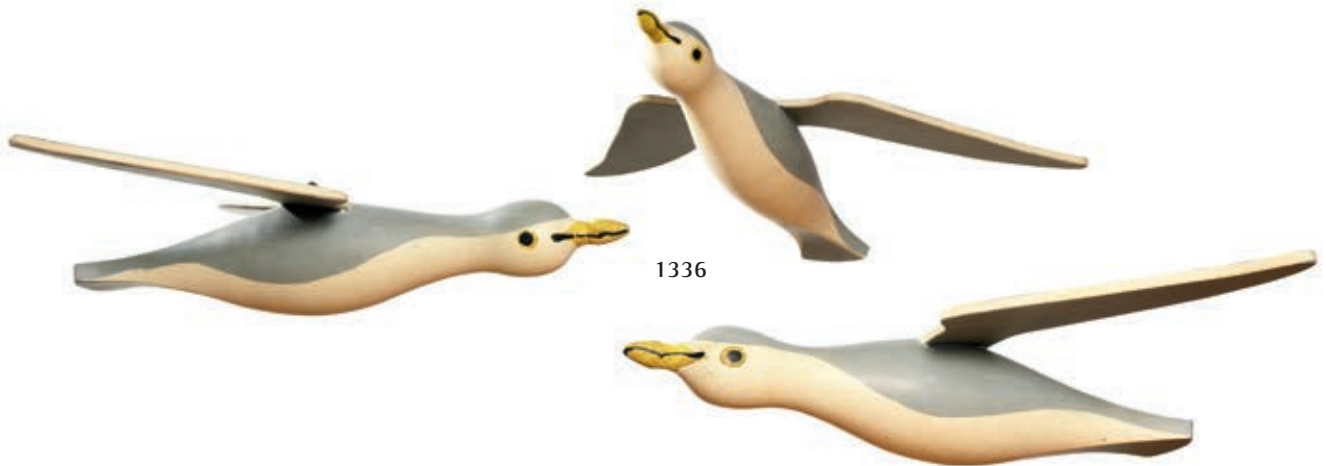
1336 ^{CD}

KAY BOJESEN

b. København 1886, d. Gentofte 1958

Three wooden seagull figures of painted wood. Upper part with eyebolts for hanging. Made by Kay Bojesen. Not stamped. Unique. L. 41 cm. W. 44 cm.

(3) DKK 30,000-40,000 / € 4,050-5,400



1337 ^{CD}

KAY BOJESEN

b. København 1886, d. Gentofte 1958

"Ole & Lise". A pair of giant and unique hand painted wooden figures. Movable arms and legs. Not stamped. Made by Kay Bojesen. H. resp. 85. and 92 cm. (2)

Provenance: Acquired by present owner in Kay Bojesen's shop in Bredgade, Copenhagen in the early 1980s.

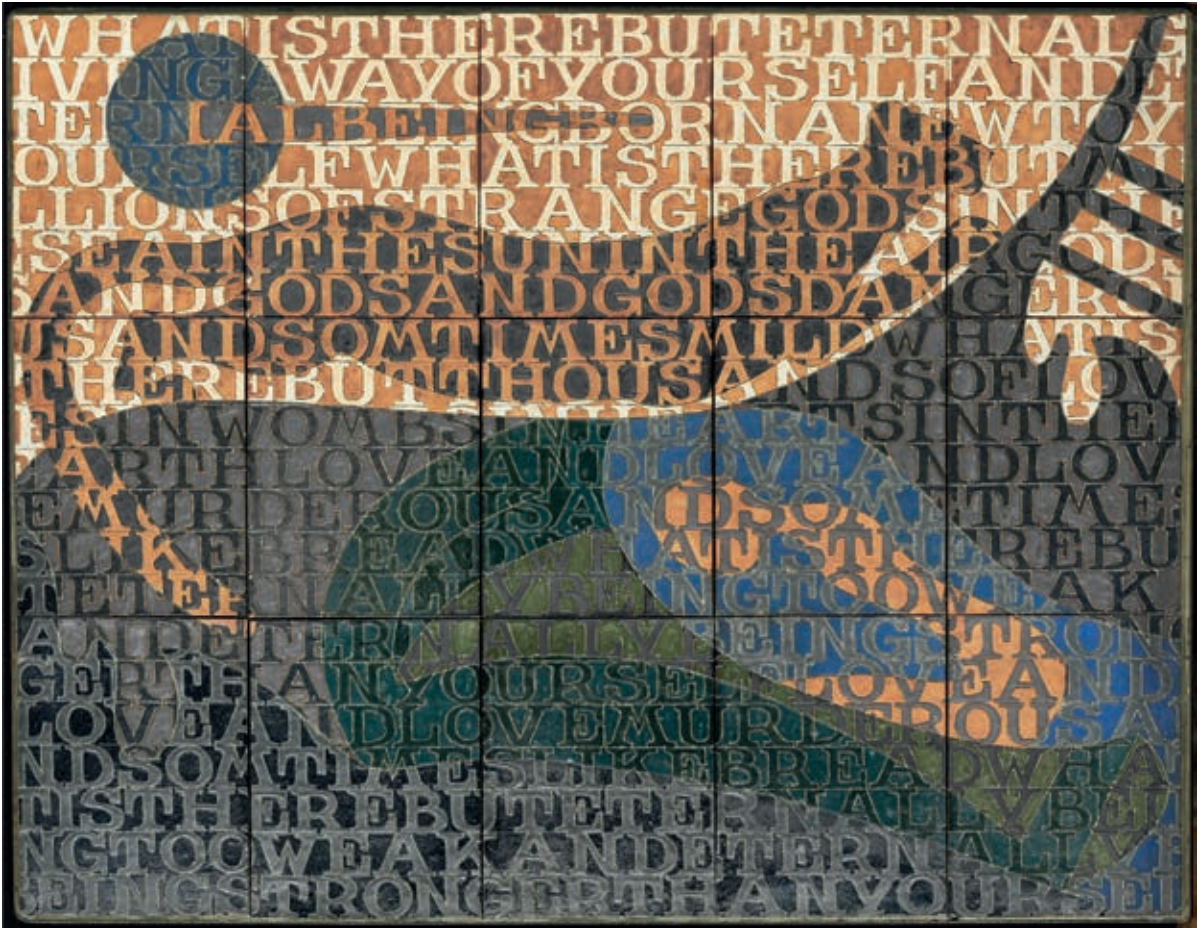
The two figures Kay Bojsen designed in connection with his wife Erna Bojesen's sister was having twins. Bojesen made the figures in lifelike scale and he named them Ole and Lise. The figures are furthermore coloured by the theatre painter Svend Johansen.

Literature: Lars Hedebo Olsen: "Kay Bojesen - Linjen skal smile", ill. p. 11, 23 and 84.

DKK 50,000-75,000 / € 6,700-10,000



1337



1338



1339

1338 ^{CD}

BO KRISTIANSEN

b. Göteborg 1944, d. Copenhagen 1991

A large wall relief with rectangular stoneware tiles with incised letters and motifs. Decorated with brown, green, blue and black glaze. Mounted in iron frame. Unsigned. Unique. 69 x 90 cm.

DKK 15,000 / € 2,000

1339 ^{CD}

BO KRISTIANSEN

b. Göteborg 1944, d. Copenhagen 1991

A sculptural stoneware object. Circular shape with incised letters. Decorated with yellow, orange, dark- and light green and rose glaze. Unsigned. Unique. H. 13,9 cm. Diam. 25,4 cm.

DKK 15,000 / € 2,000

1340 ^{CD}

BO KRISTIANSEN

b. Göteborg 1944, d. Copenhagen 1991

Sculptural lidded stoneware jar. Modelled with incised letters, decorated with polychrome and golden glaze. Unsigned. Unique. H. 12 cm. L. 10,6 cm. W. 10,6 cm.

DKK 12,000-15,000 / € 1,600-2,000



1340

1341 ^{CD}

ALEV EBÜZZIYA SIESBYE

b. Istanbul 1938

A circular stoneware bowl. Decorated with light turquoise blue glaze. The upper rim with light bluish purple glaze. Signed alev '87. Unique. H. 9 cm. Diam. 15,5 cm.

DKK 10,000 / € 1,350



1341



1342

1342 ^{CP}

ALEV EBÜZZIYA SIESBYE

b. Istanbul 1938

A very large, circular stoneware bowl. Decorated with light turquoise blue glaze with light brown elements. Signed Alev '81. Unique. H. 27. - 28,5 cm. Diam. ca. 48 cm.

Acquired by present owner in the early 1980s.

DKK 80,000-100,000 / € 11,000-13,500

1343 ^{CD}

ALEV EBÜZZIYA SIESBYE

b. Istanbul 1938

A very large, circular stoneware bowl. Decorated with light turquoise blue glaze with some light brown elements. Signed Alev '82. Unique. H. 25. - 26 cm. Diam. ca. 47 cm. Acquired by present owner in the early 1980s.

DKK 40,000-50,000 / € 5,400-6,700



1343



1344

1344
AXEL SALTO

b. Copenhagen 1889, d. Frederiksberg 1961

A cylindrical stoneware vase modelled in budded style. Decorated with blue and green glaze with greyish brown elements. Signed Salto, 1937. Royal Copenhagen. H. 8,3 cm. Diam. 10,6 cm.

DKK 10,000-15,000 / € 1,350-2,000

1345
AXEL SALTO

b. Copenhagen 1889, d. Frederiksberg 1961

A circular bronze bowl, exterior with cast fluted pattern. Stamped Salto. H. 10 cm. Diam. 18 cm.

DKK 15,000 / € 2,000



1345



1346

1346
AXEL SALTO

b. Copenhagen 1889, d. Frederiksberg 1961

A circular stoneware vase modelled with fruits, branches and leaves. Decorated with greyish blue glaze with greyish green elements. Signed Salto, 56. Royal Copenhagen. H. 15,2 cm.

DKK 25,000-30,000 / € 3,350-4,050



1347

AXEL SALTO

b. Copenhagen 1889, d. Frederiksberg 1961

A large stoneware vase modelled in budded style. Decorated with solfatara glaze. Signed Salto. Royal Copenhagen. Made 1958. H. 39,8 cm.

DKK 75,000-100,000 / € 10,000-13,500



1347



1348

AXEL SALTO

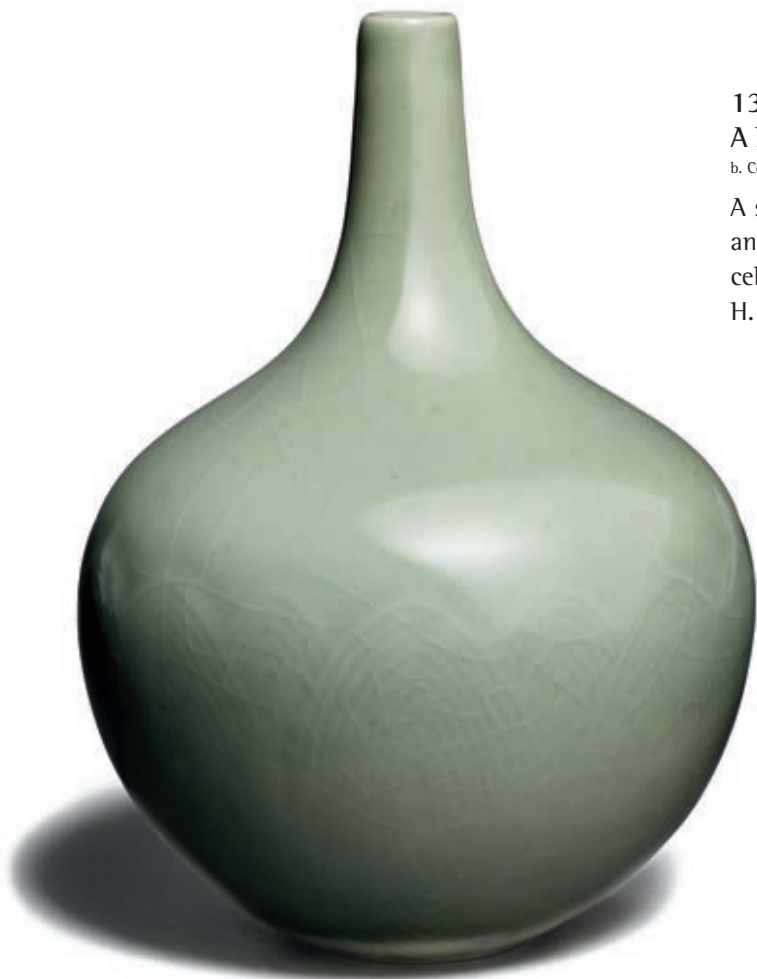
b. Copenhagen 1889, d. Frederiksberg 1961

"The Summer Vase". A large stoneware vase modelled with branches, fruits and birds. Decorated with sung glaze. Signed Salto, 20250. Royal Copenhagen. Made 1969-1974. H. 32 cm.

DKK 200,000-250,000 / € 27,000-33,500



1348



1349

1349
AXEL SALTO

b. Copenhagen 1889, d. Frederiksberg 1961

A stoneware vase modelled with tall, narrow neck and lower part with fluted pattern. Decorated with celadon glaze. Signed Salto. Royal Copenhagen. H. 25,5 cm. *DKK 15,000 / € 2,000*



1350

1350 ^{CP}

KGL. P., KNUD ANDERSEN

b. 1892, d. 1966

A stoneware lid jar decorated with celadon glaze. Signed 1/2901. Royal Copenhagen. Lid and stand of patinated and partly gilded bronze. Stamped monogram KA for Knud Andersen. Unique. H. incl. lid and base 19 cm.

DKK 20,000 / € 2,700

FURNITURE, LAMPS
AND CARPETS

Thursday 8 December 4 pm

Lot 1351 - 1508



Lot 1489



1351



1351

MAJ SVANSTRÖM

"Maj" (May). Handwoven wool carpet in "rölakan" flat weave technique with polychrome geometric pattern on a light base. Signed monogram MS and KH. This example made by Klockargårdens Hemslöjd, Tällberg, Sweden, 20th century. 360 x 252 cm. *DKK 50,000 / € 6,700*

1352

HANS J. WEGNER

b. Tønder 1914, d. Gentofte 2007

A two seater sofa bench, an easy chair and a matching coffee table with beech frame. Shell-shaped seat and back and table top of laminated teak. Model FH 1935, FH 1936 and FH 1937. Designed 1948. These examples manufactured approx. 1950s by Fritz Hansen. Sofa: L. 135 cm. Table: H. 54 cm. L. 64 cm. W. 50 cm. (3)

DKK 40,000-50,000 / € 5,400-6,700



1352



1353

1353

HANS J. WEGNER

b. Tønder 1914, d. Gentofte 2007

"JH 719". Easy chair with oak frame. Seat and back with flag halyard, fitted with brass cylinders. Loose seat and neck cushion upholstered with cream coloured fabric. Designed 1968. This example made 1970s by cabinetmaker Johannes Hansen.

DKK 20,000 / € 2,700

1354

HANS J. WEGNER

b. Tønder 1914, d. Gentofte 2007

"The Flag Halyard Chair". Easy chair with original green lacquered steel frame with oak "shoes". Seat and back's frame of chromed steel. Seat and back with flag halyard. Matching headrest upholstered with orange cotton fabric. Model GE 225. Designed 1950. This example manufactured approx. 1960 by Getama.

Provenance: Acquired by present owner's family in 1961. A copy of the original receipt is included.

The first versions of "The Flag Halyard Chair" from the 1950s were fitted with wooden shoes, later versions had shoes of black rubber or black plastic.

The model was presented at The Arts & Crafts Spring Exhibition at Designmuseum Danmark in 1950.

DKK 50,000-60,000 / € 6,700-8,050



1354

1355

CHRIS SØRENSEN

A set of seven patinated oak chairs with stretchers in back.
Seat upholstered with patinated black leather. Model 74.
Designed 1955. Manufactured 1955-60s by J. L. Møller. (7)

DKK 25,000 / € 3,350



1355



1356

1356 *

HALLDOR GUNNLØGSSON

b. Frederiksberg 1918, d. Rungsted 1985

A set of three brass wall lamps, mounted with two hemisphere, opal glass shades. LP Type no. 79-217. These examples manufactured 1960s by Louis Poulsen. Diam. 26 cm. (3)

Provenance: Andelsbanken, Copenhagen.

DKK 20,000-30,000 / € 2,700-4,050

1357

HANS J. WEGNER

b. Tønder 1914, d. Gentofte 2007

"AT 304". Dining table on oak cross-leg frame with brass stretchers. Teak top and fold-down leaves, brass fittings. This example made 1950-1960s by cabinetmaker Andreas Tuck. H. 71,5 cm. W. 86 cm. L. 128./228 cm.

DKK 25,000 / € 3,350



1357

1358

HANS J. WEGNER

b. Tønder 1914, d. Gentofte 2007

"CH 304". A teak sideboard with beech cross-leg frame. Brass stretchers. Front with six drawers and two sliding doors. Interior with trays and adjustable shelves. Designed 1950. This example manufactured 1950-1960s by Carl Hansen & Søn. H. 126 cm. D. 45 cm. L. 168 cm. Presented at the exhibition "Købestævnet" in Fredericia, 1950.

Literature: "Dansk Kunsthåndværk", no. 11, 1950, ill. p. 195, and "Dansk Kunsthåndværk", ill. no. 1, 1953.

DKK 20,000-25,000 / € 2,700-3,350



1358



1359

1359

SWEDISH DESIGN

Handwoven wool carpet in "rölakan" flat weave technique with red/black/white stripes. Unsigned. Sweden, 20th century. 287 x 156 cm.

DKK 18,000-20,000 / € 2,400-2,700

1360

HANS J. WEGNER

b. Tønder 1914, d. Gentofte 2007

"GE 1". A solid oak daybed in two sections, adjustable back with iron fittings. Original loose cushions upholstered with red wool. Designed 1955. This example manufactured circa 1960 by Getama. H. 34 cm. L. 180 cm. W. 76 cm. (2) *Literature: "Dansk Kunsthåndværk" no. 5-6, 1955. Literature: "Mobilia" no. 28, oct. 1957.*

DKK 25,000 / € 3,350



1360



1361



1362

1361

JUDITH JOHANSSON

b. Trollhättan 1916, d. Teneriffa 1993

"Myosotis, Tapis". Handwoven wool carpet in "röla-kan" flat weave technique with polychrome geometric pattern in blue, red and grey shades on a light blue base. Signed JJ. B. Made in Sweden, 1950s. 353 x 248 cm. DKK 40,000-50,000 / € 5,400-6,700

1362

ERIK OLE JØRGENSEN

b. 1925, d. 2002

A high-back, patinated oak sofa bench. Seat and back with loose cushions upholstered with dark grey wool. Manufactured circa 1970 by Georg Jørgensen & Søn. L. 210 cm DKK 20,000 / € 2,700



1363

1363

HANS J. WEGNER

b. Tønder 1914, d. Gentofte 2007

A set of six mahogany chairs. Comprising a pair armchairs and four side chairs. Seat upholstered with beige fabric. Designed 1942. These examples made approx. 1950 by cabinetmaker Johannes Hansen, with maker's paper label. (6)

This model was presented at The Copenhagen Cabinet-makers' Guild Exhibition at Designmuseum Danmark in 1942.

Literature: Grete Jalk [ed.]: "40 Years of Danish Furniture Design", vol. 2, ill. pp. 168-169. DKK 60,000 / € 8,050



1364

HANS J. WEGNER

b. Tønder 1914, d. Gentofte 2007

Four rare nutwood "China" chairs. Seats upholstered with patinated black leather, fitted with nails. These examples made circa 1944 by cabinetmaker Johannes Hansen. (4)
 Designed for merchant Mr. E. Knuth Nielsen, Aarhus 1944.

Source: Hans J. Wegner's drawing office.

DKK 100,000 / € 13,500



1364



1365

1365
FRITS HENNINGSEN

b. 1889, d. 1965

A mahogany armchair with curved armrests and legs. Sides, seat and back upholstered with patinated, black leather. Back fitted with buttons. Designed 1932. This example made approx. 1940-1950s by cabinetmaker Frits Henningsen. *DKK 20,000-30,000 / € 2,700-4,050*

1366

POUL HENNINGSEN

b. Ordrup 1894, d. Hillerød 1967

"PH 3/3". Pendant with browned brass frame stamped "Pat. Appl." and "D.R.P.". Shades of frosted glass with original golden rims. This example manufactured 1926-1928 by Louis Poulsen. Diam. 28,5 cm.

DKK 30,000-40,000 / € 4,050-5,400



1366

1367 ©

OLE WANSCHER

b. Frederiksberg 1903, d. Charlottenlund 1985

A freestanding Brazilian rosewood desk. Front with four drawers. Reverse side with pull-out writing leaf. Brass handles and "shoes". This example made approx. 1960s by cabinetmaker A.J. Iversen. H. 74 cm. W. 75 cm. L. 152 cm.

DKK 20,000-25,000 / € 2,700-3,350



1367



1368

1368

KAY FISKER, ATTRIBUTED

b. Frederiksberg 1893, d. København 1965

A Cuban mahogany stool with tapering, carved legs. Profiled rail and round stretchers. Seat upholstered with light grey wool. This example made 1920-1930s probably by cabinetmaker V. Bloch Jørgensen. H. 47 cm. W. 47 cm. L. 47 cm.

DKK 20,000 / € 2,700

1369

KAY FISKER

b. Frederiksberg 1893, d. København 1965

A Cuban mahogany dressing set. Comprising a rectangular mirror with a pair of side tables and a matching stool. Mirror with foldable sides. Tables each with four drawers in front. Sculpturally carved legs, seat upholstered with black horsehair. These examples made early 1920s probably by cabinetmaker V. Bloch Jørgensen. Mirror: H. 118 cm. W. 48./110 cm. Tables: H. 74 cm. W. 32 cm. D. 34 cm. Stool: seat H. 42 cm. (4)

Provenance: Acquired by current owner's grandfather who was a friend and colleague of Kay Fisker.

DKK 50,000 / € 6,700



1369



1369 detail



1370

1370 ©
OLE WANSCHER

b. Frederiksberg 1903, d. Charlottenlund 1985

A Brazilian rosewood dining room suite. Comprising a circular dining table with extension and three extra leaves, one of which with rail. A set of six chairs with cross-bars in back. Seats upholstered with light blue horsehair and blue leather edgings. These examples made 1950-1960s by cabinetmaker A. J. Iversen, retailed by Illums Bolighus with retailer's metal plaque. Table: H. 73 cm. Diam. 125 cm. L. including leaves 500 cm. (10)

DKK 25,000-30,000 / € 3,350-4,050



1370

1371 ©

OLE WANSCHER

b. Frederiksberg 1903, d. Charlottenlund 1985

A Brazilian rosewood cabinet on slightly tapering, profiled legs. Slightly curved front with tambour doors and five drawers. Brass handles. Interior with adjustable shelves. This example made approx. 1960s for Illums Bolighus, Copenhagen, with retailer's metal plaque. H. 150 cm. W. 120 cm. D. 45 cm.

DKK 40,000 / € 5,400



1371

1372

RAKEL CARLANDER

"Squares". Handwoven wool carpet in "röla-kan" flat weave technique. Polychrome geometric pattern. Blueish grey edges, middle section with blue pattern squares. Signed monogram RC. Made by Carlanders Atelier, Skövde, Sweden. 242 x 168 cm.

DKK 18,000-20,000 / € 2,400-2,700



1372



1373

1373
OLE WANSCHER

b. Frederiksberg 1903, d. Charlottenlund 1985

A set of three mahogany armchairs. Seats upholstered with black leather. Model J2833. Designed 1958. These examples made 1960s by cabinetmaker A. J. Iversen, two with maker's paper label. (3)

The model was presented at The Copenhagen Cabinetmakers' Guild Exhibition in 1958.

Literature: Grete Jalk [ed.]: "40 Years of Danish Furniture Design", vol. 4, ill. p. 57. DKK 30,000 / € 4,050



1374

EJNER LARSEN

b. 1917, d. 1987

AKSEL BENDER MADSEN

b. 1916, d. 2000

A square tobacco/games table of rosewood with brass fittings. Top with reversible lid in centre, one side with chessboard, and four rectangular fold-out compartments. Interior covered with black leather and adjustable space dividers. Designed 1966. This example made early 1970s by cabinetmaker Willy Beck. H. 51,5 cm. W./L. 63 cm.

Model presented at The Copenhagen Cabinetmakers' Guild Exhibition at Designmuseum Danmark, 1966.

Literature: Grete Jalk [ed.]: "40 Years of Danish Furniture Design", vol. 4, p. 327.

DKK 40,000-50,000 / € 5,400-6,700



1374



1375

1375
MOGENS KOCH

b. Frederiksberg 1898, d. Copenhagen 1992

A pair of freestanding addition benches with mahogany frame. Seat and back upholstered with black leather. Fitted with leather covered buttons. These examples made approx. 1978 by Rud. Rasmussen Cabinetmakers, Copenhagen, with maker's paper label. (2)

RR label no. 37566. DKK 30,000 / € 4,050

1376

POUL HENNINGSEN

b. Ordrup 1894, d. Hillerød 1967

"PH-3,5/2". Table lamp with browned brass frame, stamped "Pat. Appl.". Top- and bottom shade of one-layer opal glass. Middle shade of multi-layer opal glass. This example manufactured 1927-1928 by Louis Poulsen. H. 45 cm.

DKK 30,000-40,000 / € 4,050-5,400



1376

1377

OLE WANSCHER

b. Frederiksberg 1903, d. Charlottenlund 1985

"Forum table". A freestanding mahogany desk. Front with two drawers and above each a pull-out writing leaf. Rear with one pull-out writing leaf. Brass fittings and handles. Designed 1959. This example made approx. 1960s by cabinetmaker A. J. Iversen. H. 74 cm. W. 100 cm. L. 200 cm.

Literature: Grete Jalk [ed.]: "40 Years of Danish Furniture Design", vol. 4, ill. p. 93. DKK 20,000 / € 2,700



1377



1378



1379

1378

SWEDISH DESIGN

A handwoven wool carpet in "rölakan" flat weave technique with polychrome geometric pattern. Signed VJ and IF. Sweden 20th century. 247 x 176 cm.

DKK 18,000-20,000 / € 2,400-2,700

1379

AXEL EINAR HJORTH

b. 1888, d. 1959

"Birka". A freestanding, curved black lacquered birch desk. Front with three drawers and a cabinet, interior with four drawers. Reverse side with open shelving. Designed 1936. This example manufactured circa 1940s by Nordiska Kompaniet, Sweden. H. 73 cm. L. 187 cm. W. 63.

DKK 25,000-30,000 / € 3,350-4,050



1380

1380

VILHELM LAURITZEN

b. 1894, d. 1984

FRITS SCHLEGEL

b. 1896, d. 1965

Rare, patinated table lamp with chromed metal frame. Black lacquered foot and cone-shaped shade. Designed 1928. This example manufactured 1930s for Fritzsche's Glashandel. Height adjustable 46 - 63 cm.

DKK 50,000-75,000 / € 6,700-10,000



1381

POUL HENNINGSEN

b. Ordrup 1894, d. Hillerød 1967

A rare "Free-swinger" easy chair with chromed steel tube frame. Seat, back and headrest upholstered with patinated original blue- and white striped fabric. The reverse side with red fabric. Prototype. A variant was presented at "Købestævnet" in 1932. Made 1932 at V. A. Høffding.

Provenance: A gift from Poul Henningsen to a friend, later inherited.

Literature: "Nyt Tidsskrift for Kunstindustri", January 1932, ill. p. 105.

Poul Henningsen says about the chair: "There is something long-lasting and hygienic about the steel tube chair if it is correctly shaped and upholstered. We have been working with a type of upholstery that will not attract moths and that is easily removed from the steel tubes by the housewife when cleaning. Seen through prudent eyes there is not only a present but also a future for the steel tube furniture. The public is now being presented to the first outcome of the production, but there is a chapter yet to be written".

DKK 150,000 / € 20,000



1381

1382

POUL HENNINGSEN

b. Ordrup 1894, d. Hillerød 1967

"PH-3/2". Rare floor lamp with polished, nickel-plated frame and socket house. Black lacquered metal foot. Shades of red/frosted glass. This example manufactured 1931 by Louis Poulsen. H. 146 cm.

Literature: "Light Years Ahead", ill. pp. 188-189.

DKK 30,000-40,000 / € 4,050-5,400

1383 ©

MOGENS LASSEN

b. Copenhagen 1901, d. Holte 1987

"The Egyptian Table". A circular Brazilian rosewood coffee table on foldable frame. Top with raised edge, brass fittings. Designed 1935. This example made early 1980s by cabinetmaker A.J. Iversen. H. 52,5 cm. Diam. 85 cm.

Provenance: Acquired by present owner in 1982. A copy of the original receipt is included.

Literature: Grete Jalk [ed.]: "40 Years of Danish Furniture Design", vol. 2, p. 115. DKK 40,000 / € 5,400



1382



1383

1384

FLEMMING LASSEN

b. 1902, d. 1984

Easy chair with tapering mahogany legs. Sides, seat and back upholstered with light, floral fabric. Designed 1940. This example made 1940-1950s by cabinetmaker Jacob Kjær.

The model was presented at The Copenhagen Cabinetmakers' Guild Exhibition at in 1940.

Literature: Grete Jalk [ed.], "40 Years of Danish Furniture Design", vol. 2, p. 116. DKK 40,000 / € 5,400



1384



Cabinetmaker's exhibition 1936



Paris Exposition 1937



1385



1385

VIGGO S. JØRGENSEN

b. Odense 1901

HANS CHRISTIAN HANSEN

d. Hvidovre 1978

A pair of rare chairs with round ash wood legs. Seat and back upholstered with original, patinated natural leather. These examples made approx. 1936 by cabinetmaker Johannes Hansen. (2)

The architects Hans Christian Hansen & Viggo S. Jørgensen designed some distinctly modernistic furniture pieces in the years 1935-1936, very much in the style of Finn Juhl. Shortly after, both architects abandoned furniture design and devoted them selves to solely designing buildings.

The model was presented at The Copenhagen Cabinet-makers' Guild Exhibition at Designmuseum Danmark, 1936. Model also presented at the World Exposition in Paris 1937, where it received a silver medal.

Literature: Grete Jalk [ed.]: "40 Years of Danish Furniture Design", vol. 1, p. 244-245.

Literature: Møller Nielsen, Johan: "Wegner, en dansk møbelkunstner", model ill. p. 24.

DKK 100,000 / € 13,500

1386

VILHELM LAURITZEN

b. 1894, d. 1984

A bench with chromed steel tube frame. Seat of solid, lacquered teak with raised back. Designed and made 1936-1937. H. 50 cm. D. 42 cm. L. 111 cm.

Provenance: Gladsaxe City Hall.

The model was designed for Gladsaxe City Hall and also used at the Danish Embassy in Washington DC.

Literature: Lisbeth Balslev Jørgensen a.o.: "Vilhelm Lauritzen- En moderne arkitekt", 1994, ill. p. 73.

DKK 25,000-40,000 / € 3,350-5,400

1387

VILHELM LAURITZEN

b. 1894, d. 1984

A bench with chromed steel tube frame. Seat of solid, lacquered teak with raised back. Designed and made 1936-1937. H. 50 cm. D. 42 cm. L. 111 cm.

Provenance: Gladsaxe City Hall.

The model was designed for Gladsaxe City Hall and also used at the Danish Embassy in Washington DC.

Literature: Lisbeth Balslev Jørgensen a.o.: "Vilhelm Lauritzen- En moderne arkitekt", 1994, ill. p. 73.

DKK 25,000-40,000 / € 3,350-5,400



1386



1388

VILHELM LAURITZEN

b. 1894, d. 1984

A rare pair of two-light wall lamps with brass frame. Frosted glass shades. Model 32561. These examples manufactured 1940-1950s by Louis Poulsen. H. 25 cm. W. 43 cm. (2)

DKK 15,000 / € 2,000



1388



1387

1389

MOGENS VOLTELEN

b. 1908, d. 1995

"Københavnstolen". A patinated beech easy chair with curved frame. Seat, back and armrests with patinated, natural leather fitted with brass nails. Designed 1936. This example made 1940s by cabinetmaker Niels Vodder.

DKK 20,000-25,000 / € 2,700-3,350



1389

1390
VILHELM LAURITZEN,
ATTRIBUTED

b. 1894, d. 1984

Brass floor lamp with funnel-shaped shade. This example manufactured 1930s presumably by Louis Poulsen. H. 122 cm. *DKK 30,000 / € 4,050*



1390

1391
POUL HUNDEVAD

Folding chair with patinated oak frame. Armrests, seat and back with black leather. Designed 1950. This example manufactured approx. 1950-1960s by Poul Hundevad.

DKK 20,000-25,000 / € 2,700-3,350



1391

1392 ©

FINN JUHL

b. Frederiksberg 1912, d. Ordrup 1989

"BO 101". A low table bench with anodized steel frame. Brazilian rosewood top and "shoes". Raised brass edges. Designed 1953. This example manufactured approx. 1960s by Bovirke. H. 40 cm. W. 45 cm. L. 112,5 cm.

Literature: Esbjørn Hiorth: "Arkitekten Finn Juhl", 1990, ill. pp. 56-57. DKK 20,000 / € 2,700

1393

JUDITH JOHANSSON

b. Trollhättan 1916, d. Teneriffa 1993

A handwoven wool carpet in "rölakan" flat weave technique with polychrome geometric pattern on a blue base. Signed JJ. Sweden, 20th century. 335 x 245 cm. DKK 40,000-50,000 / € 5,400-6,700



1392

1394

FINN JUHL

b. Frederiksberg 1912, d. Ordrup 1989

"Fireplace Chair". A pair of oak easy chairs, cross stretchers below seat. Seat, back and loose seat cushion upholstered with grey wool. Model BO 59. Designed 1946. These examples manufactured approx. 1950s by Bovirke. (2)

Literature: Noritsugu Oda: "Danish Chairs", p. 88. DKK 40,000 / € 5,400



1393



1394

1395

RUD THYGESEN
JOHNNY SØRENSEN

b. 1932, b. 1944

A rare daybed with cherry wood frame. Seat with woven cane. Loose mattress-cushion upholstered with reddish brown leather, fitted with leather covered buttons. This example manufactured approx. 1980 by Botium. H. including mattress 37 cm. W. 80 cm. L. 190 cm.

DKK 40,000 / € 5,400



1395

1396

FINN JUHL

b. Frederiksberg 1912, d. Ordrup 1989

"BO 72". A beech and teak dining room suite. Comprising four beech armchairs, seat and back upholstered with black wool. Table with curved beech rail. Teak legs and top with extension and two leaves, brass fittings. These examples manufactured approx. 1960s by Bovirke. H. 74 cm. W. 85 cm. L. 131/L. 180 cm. (7)

Literature: "Dansk Kunsthåndværk", 1952, ill. p. 64.

Literature: "Finn Juhl Memorial Exhibition, Japan 1990", ill. p. 137.

DKK 50,000 / € 6,700



1396



1396



1397

1397

HANS J. WEGNER

b. Tønder 1914, d. Gentofte 2007

"Peacock Chair". Easy chair with ash frame and teak armrests. Seat with woven paper cord. Model JH 550. Designed 1947. This example made approx. 1960s by cabinetmaker Johannes Hansen, stamped by maker.

The model was presented at The Copenhagen Cabinet-makers' Guild Exhibition at Design Museum Denmark in 1947.

Literature: Grete Jalk [ed.], "40 Years of Danish Furniture Design" 1987, vol 3, ill. p. 14-17.

DKK 20,000 / € 2,700



1398



1399

1398 *

FINN JUHL

b. Frederiksberg 1912, d. Ordrup 1989

"FJ-44". A sculptural walnut wood armchair. Seat upholstered with natural leather. This example manufactured 2010s by Onecollection, with metal plaque.

A matching custom-made dustbag and cardboard box is included.

The "FJ-44" chair is regarded as one the most important chairs from Finn Juhl. Designed and presented at the Copenhagen Cabinetmakers' Guild exhibition in 1944, the chair marks the beginning of Finn Juhls most fruitful period from 1944-1950. With this chair he expresses his unique, sculptural design solely in wood for the first time.

DKK 25,000 / € 3,350

1399

HANS J. WEGNER

b. Tønder 1914, d. Gentofte 2007

"AP 27". High-back easy chair with teak legs and armrests. Sides, seat and back upholstered with original black leather. Designed 1954. This example manufactured approx. 1950s by AP-Stolen, stamped by maker.

This model was presented at the Manufacturer Association's Furniture Fair in Fredericia, May 1954.

Literature: "Møbler" No. 6-1954, p. 27.

Literature: Noritsugu Oda: "Hans J. Wegner's 100 Chairs", p. 183.

DKK 40,000 / € 5,400



1400

1400

HANS J. WEGNER

b. Tønder 1914, d. Gentofte 2007

"China chair". A set of six cherry wood armchairs. A total of 12 loose seat cushions included, upholstered with patinated natural leather, fitted with buttons. Model 4283. Designed 1944. These examples manufactured 1988 by Fritz Hansen, with maker's label. (6)

DKK 50,000-60,000 / € 6,700-8,050

1401

POUL HENNINGSEN

b. Ordrup 1894, d. Hillerød 1967

"PH-4/4". Pendant with browned brass socket house stamped "Patented". Original amber-coloured glass shades. This example manufactured 1930s by Louis Poulsen. Diam. 40 cm.

DKK 30,000-40,000 / € 4,050-5,400



1401

1402

HANS J. WEGNER

b. Tønder 1914, d. Gentofte 2007

A rare, rectangular oak dining table on round, tapering legs. This example manufactured circa 1960s by Andr. Tuck, stamped by maker. H. 72,5 cm. W. 90 cm. L. 180 cm.

A rare table by Wegner following his pursuit to simplify his table designs. The idea of a table without a rail, and legs attached solely and directly to the top was first seen in his model JH 584 from 1958.

DKK 20,000-25,000 / € 2,700-3,350



1402



1403

1403

HANS J. WEGNER

b. Tønder 1914, d. Gentofte 2007

"JH 810". Freestanding mahogany desk. Rail with two integrated drawers. Runner legs and handles of chromed steel. Designed 1970. This example made 1970s by cabinetmaker Johannes Hansen with maker's label. H. 72 cm. W. 95 cm. L. 190 cm.

DKK 75,000 / € 10,000

1404

HANS J. WEGNER

b. Tønder 1914, d. Gentofte 2007

"Swivel Chair". Chair with solid oak back. Polished steel frame mounted on four castors. Seat upholstered with blue wool. Model JH 502. Designed 1955. This example made late 1960s by cabinetmaker Johannes Hansen.

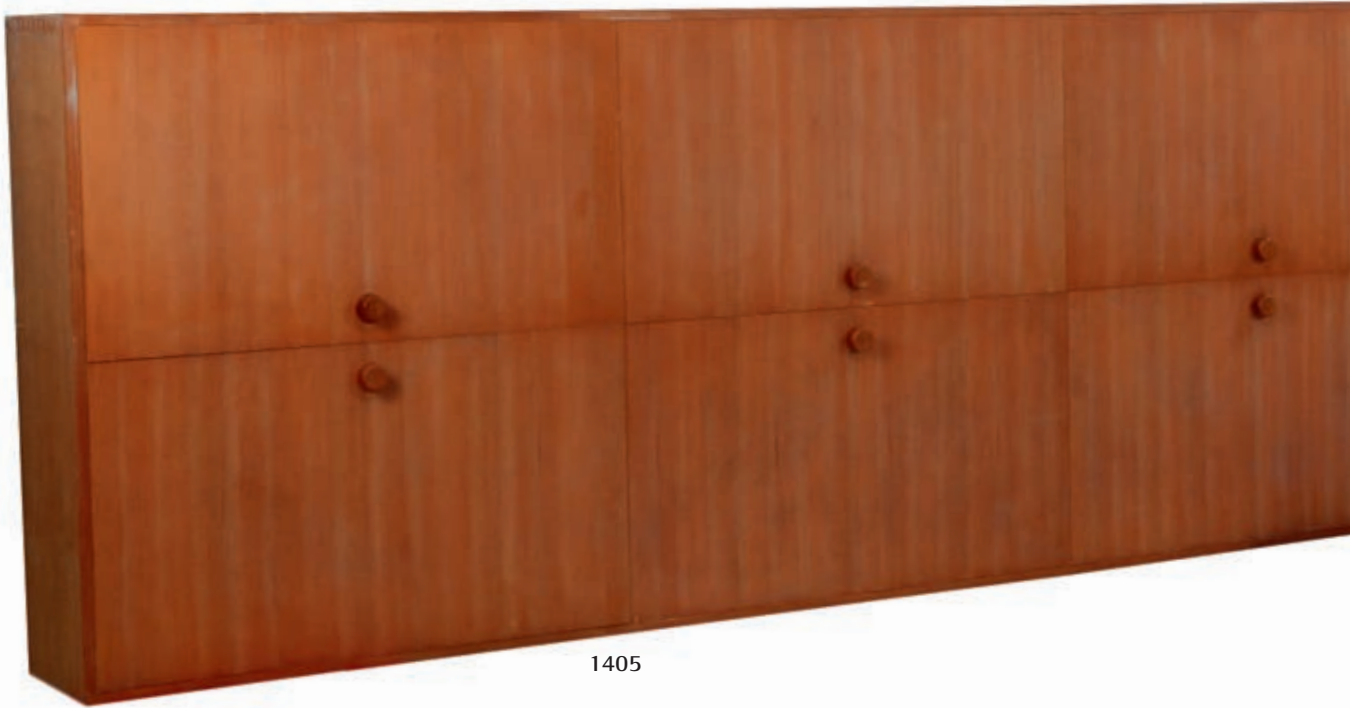
This model was presented at The Copenhagen Cabinetmakers' Guild Exhibition in 1955.

Literature: Grete Jalk [ed.]. "40 Years of Danish Furniture Design" 1927-1966, vol. 3, ill. pp. 324-327.

DKK 30,000-40,000 / € 4,050-5,400



1404



1405

1405 ^{CD}

ARNE JACOBSEN

b. Copenhagen 1902, d. s.p. 1971

A very large and unique Oregonpine wall cabinet. Front with 10 doors, that open horizontally. Special order, made 1960 by Asmussen & Weber. . H. 120 cm. D. 35 cm. L. 516 cm.

Made as part of the original interior in one of the "Atrium" houses Strandvejen 415B at Bellevue, Klampenborg, Denmark. The "Atrium" houses by Arne Jacobsen were constructed in 1960. In 1986 the "Atrium" houses were classified as a listed / protected building as a component in the Arne Jacobsen Bellevue complex. The cabinet has been in its original setting until now.

For a number of years, Arne Jacobsen himself lived in no. 413.

VIEWING FOR THIS CABINET : Sundkrogsgade 30, 2150 Nordhavn. DKK 60,000-80,000 / € 8,050-11,000



1406



1405

1406 ^{CD}

ARNE JACOBSEN

b. Copenhagen 1902, d. s.p. 1971

Unique bed with frame, compartment and base of solid pine. Legs of patinated, chromed metal. Special order, made 1960 by Asmussen & Weber. H. 35 cm. W. 90 cm. L. 205 cm.

Made as part of the original interior in one of the "Atrium" houses Strandvejen 415B at Bellevue, Klampenborg, Denmark. The "Atrium" houses by Arne Jacobsen were constructed in 1960. In 1986 the "Atrium" houses were classified as a listed / protected building as a component in the Arne Jacobsen Bellevue complex. The Bed has been in its original setting until now.

For a number of years, Arne Jacobsen himself lived in no. 413. DKK 15,000-20,000 / € 2,000-2,700





1407

1407

POUL KJÆRHOLM

b. Østervrå 1929, d. Hillerød 1980

"PK 51". A large desk with chromed steel frame. Top of lacquered ash. Designed 1957. This example manufactured 1965-1966 by E. Kold Christensen, stamped by maker. H. 68,5 cm. W. 102 cm. L. 204 cm.

Provenance: Acquired by present owner's father in 1965-1966. DKK 20,000-25,000 / € 2,700-3,350

1408

POUL KJÆRHOLM

b. Østervrå 1929, d. Hillerød 1980

"PK 11". A set of four armchairs with chromed steel frame. Ash wood backrest. Seats later upholstered with red leather. Designed 1957. These examples manufactured 1965-1966 by E. Kold Christensen, stamped by maker. (4)

Provenance: Acquired by present owner's father in 1965-1966. DKK 80,000-100,000 / € 11,000-13,500





1408



1409



1409

1409

KAARE KLINT

b. Frederiksberg 1888, d. Copenhagen 1954

A pair of freestanding Cuban mahogany addition sofa units and a matching ottoman. Sides, seat and back upholstered with original, patinated Niger leather, fitted with leather covered buttons. Model 4698. Designed 1933. These examples made 1930s by Rud. Rasmussen Cabinetmakers, Copenhagen, with maker's paper label. L. 91 cm. (3)

KK labels indistinctly numbered.

Literature: Gorm Harkær, Klintiana: "Kaare Klint", vol. 2, ill. p. 94. DKK 200,000 / € 27,000



1409

1410

HANS J. WEGNER

b. Tønder 1914, d. Gentofte 2007

A pair of oak chairs. Seat and back upholstered with original, patinated Niger leather. These examples manufactured 1940s by Planmøbler, Aarhus, stamped by maker. (2)

Stamped resp. 7273 and 7322.

DKK 15,000-20,000 / € 2,000-2,700



1410

1411

POUL HENNINGSEN

b. Ordrup 1894, d. Hillerød 1967

"PH-3,5/2". Table lamp with browned brass frame. Switch- and socket house of bakelite. Shades of yellow/frosted glass. This example manufactured 1933-1940 by Louis Poulsen. H. 43 cm. *DKK 15,000 / € 2,000*

1412

MOGENS LASSEN

b. Copenhagen 1901, d. Holte 1987

"The Den of Mr. Penn, the Editor". A teak desk with rosewood "shoes". Front with three drawers. This example made approx. 1953 by Thorald Madsen Cabinetmakers. H. 74 cm. W. 70 cm. L. 130 cm.

The model was presented at the Copenhagen Cabinetmakers' Guild Exhibition in 1953.

Literature: Grete Jalk [ed.]: "40 Years of Danish Furniture Design", vol. 3, ill. pp. 256-257.

DKK 30,000-40,000 / € 4,050-5,400



1411



1412

1413

ALVAR AALTO

b. Kuortane 1898, d. 1976

"Paimio". A very early lounge chair with frame and sculptural seat and back of moulded birch. Designed and manufactured 1931-1932 by Oy Huonekalu- ja Rakennustyötehdas Ab, Turku, Finland.

Provenance: Acquired in Stockholm, 1932 by present owner's great-grandparents as a wedding present to themselves.

The model was designed for the Varsinais-Suomi tuberculosis sanatorium in Paimio, Finland. The lecture hall, at the east end of the dining-hall floor, was furnished with wooden chairs which later came to be known as the "Paimio chair".

DKK 60,000-80,000 / € 8,050-11,000





1413

1414

FINN JUHL

b. Frederiksberg 1912, d. Ordrup 1989

"Chieftain Chair". A teak easy chair. Seat, armrests and back upholstered with original, patinated natural leather. Back fitted with buttons. Designed 1949. This example made approx. 1949-1950 by cabinetmaker Niels Vodder. Not stamped.

DKK 600,000-800,000 / € 80,500-110,000





1414



1415

1415

FINN JUHL

b. Frederiksberg 1912, d. Ordrup 1989

"FJ 45". A pair of teak easy chairs. Seat, back and loose seat cushion upholstered with reddish brown leather. Designed 1945. These examples made approx. 1960 by cabinetmaker Niels Vodder, stamped by maker. (2)

Provenance: Acquired by present owner's parents approx. 1960 at Harbo Sølvsten, Aarhus.

DKK 200,000-250,000 / € 27,000-33,500



1416

FINN JUHL

b. Frederiksberg 1912, d. Ordrup 1989

"Chieftain Chair". A teak easy chair. Seat, armrests and back upholstered with original, patinated natural leather. Back fitted with buttons. Designed 1949. This example made circa 1950-1955 by cabinetmaker Niels Vodder, stamped.

DKK 500,000-600,000 / € 67,000-80,500



1416 reverse



1416



1417

1417

POUL HENNINGSEN

b. Ordrup 1894, d. Hillerød 1967

"PH-2/2". Short miniature, browned brass table lamp with amber coloured glass shades. This example manufactured 1931-1933 by Louis Poulsen. H. 31 cm.

Literature: "Light Years Ahead", ill. p. 164.

DKK 30,000-40,000 / € 4,050-5,400



1418

1418

POUL HENNINGSEN

b. Ordrup 1894, d. Hillerød 1967

"PH-3/2". Table lamp with browned brass frame stamped "Pat Appl.". Original amber-coloured glass shades. This example manufactured 1927-1928 by Louis Poulsen. H. 43 cm.

DKK 50,000-75,000 / € 6,700-10,000



1419

1419

POUL HENNINGSEN

b. Ordrup 1894, d. Hillerød 1967

"PH-4/3". Table lamp with thick switch house and patinated brass stand stamped "Pat. Appl.". Original amber-coloured glass shades. This example manufactured 1927-1928 by Louis Poulsen. H. 54 cm.

Early version with screws on the side of the socket house. DKK 100,000-125,000 / € 13,500-17,000



1420

1420

JONAS BOHLIN

"Concrete". Sculptural armchair with patinated metal tube frame. Seat and back of cast concrete. Signed 11/100 Jonas Bohlin. Designed 1981.

This iconic chair epitomizes Scandinavian design in the 1980s. It was made in 100 numbered pieces, 10 EA pieces, 10 HC pieces, 11 test pieces and three additional pieces. A scarce total of 134 chairs were made.

Literature: Dan Gordan, "Svenska stolar och deras formgivare 1899-2001", Stockholm, 2002, pp. 244-245.

Literature: Monica Boman [ed.]: "Svenska Möbler 1890-1990", ill. p. 434. DKK 100,000 / € 13,500



1420



1421

1421
GINO SARFATTI

b. Venedig 1912, d. Gravedona 1984

Floor lamp with chromed and white lacquered steel frame and shade. Model 1045-67. Designed 1967. Manufactured and marked late 1960s by Arteluce, Italy. Adjustable height 97. - 148 cm.

Literature: Marco Romanelli & Sandra Severi: "Gino Sarfatti 1938-1973 selected works", ill. p. 448.

DKK 15,000 / € 2,000

1422
POUL KJÆRHOLM

b. Østervrå 1929, d. Hillerød 1980

"PK 61". A square coffee table with chromed steel frame. Top of Porsgrunn marble with fossils. Designed 1956. This example manufactured 1960s by E. Kold Christensen, stamped by maker. H. 33 cm. W. 80 cm. L. 80 cm.

DKK 80,000-100,000 / € 11,000-13,500



1422





1423

1423

HANS J. WEGNER

b. Tønder 1914, d. Gentofte 2007

"Ox-Chair". Easy chair and stool with steel frame. Sides, back, seat and stool upholstered with original black leather. This example manufactured 2003 by Erik Jørgensen, with maker's paper label. (2)

DKK 30,000 / € 4,050

1424

PREBEN FABRICIUS

b. 1931, d. 1984

JØRGEN KASTHOLM

b. 1931, d. 2007

"Scimitar". Easy chair with stainless steel frame. Seat and back upholstered with patinated black leather. Model IS-63. Designed 1962-1963. This example made 1960s by upholsterer Ivan Schlechter. Retailed by Illums Bolighus, with retailer's metal plaque.

DKK 35,000-40,000 / € 4,700-5,400



1424

1425

OLE WANSCHER

b. Frederiksberg 1903, d. Charlottenlund 1985

A circular rosewood dining table with extension and three leaves with rail. This example made approx. 1970s by cabinetmaker A.J. Iversen, with maker's paper label. H. 75 cm. Diam. 125 cm. L. incl. leaves 303,5 cm. (4) *DKK 30,000 / € 4,050*



1425

1426 ©

NIELS O. MØLLER

b. 1920, d. 1982

A set of 14 Brazilian rosewood chairs. Seats upholstered with patinated black leather. Model 78. Designed 1962. These examples manufactured approx. 1970s by J. L. Møller, stamped by maker. (14)

DKK 30,000 / € 4,050



1426



1426



1427

1427

DANISH CABINETMAKER

A set of 12 dark polished beech bar stools. Three legged frame, saddle-shaped seat and "handles". Black lacquered metal foot rest. Made approx. 1970s. (12) *DKK 20,000-30,000 / € 2,700-4,050*



1428 ©

TOVE KINDT-LARSEN

b. 1906, d. 1994

EDVARD KINDT-LARSEN

b. Frederiksberg 1901, d. Gentofte 1982

A Brazilian rosewood swivel chair with slanting, tapering legs. Seat and back upholstered with original black leather. Designed 1957. This example made 1960s by Thorald Madsen Cabinetmakers.

The model was presented at The Copenhagen Cabinet-makers' Guild Exhibition in 1957.

Literature: Grete Jalk [ed.]: "40 Years of Danish Furniture Design", vol. 4, ill. p. 25. DKK 30,000 / € 4,050

1428



1429

1429

IRMA KRONLUND

Handwoven wool carpet in "rölakan" flat weave technique. Dark grey grid pattern with fields in red and orange shades. Signed IK. KLH (Kalmar Läns Hemslöjd). 150 x 226 cm.

DKK 18,000-20,000 / € 2,400-2,700



1430



1431

1430

ARNE VODDER

b. 1926, d. 2009

A teak sideboard. Front with six drawers and two reversible, sliding doors. One side with teak, the other side with original, black lacquer. Interior with adjustable shelves. Model 29. Designed 1958. This example manufactured 1960s by Sibast Furniture. H. 76 cm. L. 182 cm. D. 49,5 cm.

DKK 25,000 / € 3,350

1431 ©

ILLUM WIKKELSØ

b. 1919, d. 1999

A set of four Brazilian rosewood easy chairs. Seat, sides and back upholstered with light brown leather. Model 451. These examples manufactured 1960s by Aarhus Polstermøbelfabrik. (4)

Literature: "Mobilia", 1958 on advertising page.

DKK 30,000-40,000 / € 4,050-5,400



1433



1432

1432

ILLUM WIKKELSØ

b. 1919, d. 1999

"Croissant". A pair of easy chairs with rosewood frame. Sides, back and loose seat cushion upholstered with patinated reddish brown leather. These examples manufactured 1950s by Holger Christiansen. (2)

DKK 40,000-50,000 / € 5,400-6,700

1433

ULLA PARKDAL

b. 1939

Handwoven wool carpet in "rölakan" flat weave technique with polychrome geometric pattern in grey/blue/red shades. Signed UP. 245 x 164 cm.

DKK 18,000-20,000 / € 2,400-2,700

1434

DANISH FURNITURE DESIGN

A pair of easy chairs with tapering teak legs. Sides, back and reversible seat cushion upholstered with greyish white fabric. These examples manufactured approx. 1960s. (2)

DKK 20,000 / € 2,700



1434

1435 ^{CD} ©

POUL CADOVIOUS

b. 1911, d. 2011

A rare square chess table with trumpet-shaped brushed steel base. Brazilian rosewood top with chessboard, light squares of ash. Two sides covered with patinated brown leather. One side with chess piece storage. This example manufactured by special order 1960s by France & Søn, with maker's metal plaque. H. 72 cm. L. 80 cm. W. 80 cm.

Made as a gift from Poul Cadovious to the sellers father.

DKK 20,000 / € 2,700



1435

1436

HANS J. WEGNER

b. Tønder 1914, d. Gentofte 2007

"RY 25". Rosewood sideboard with rectangular steel legs with rosewood "shoes". Front with two tambour doors. Oak interior with trays and adjustable shelves. Steel handles. This example manufactured 1960s by Ry Møbler. H. 79,5 cm. D. 49 cm. L. 200 cm. *The model was presented at the the Manufacturer Association's Furniture Fair in Fredericia in 1959.*

DKK 30,000 / € 4,050



1436



1437

1437
JØRGEN KASTHOLM,
PREBEN FABRICIUS

b. 1931, d. 2007, b. 1931, d. 1984

"Tulip". A set of six swivel chairs with chromium-plated, three-legged frame. Seat, sides, back and "cushion" upholstered with reddish brown leather. Model FK-6726. These examples manufactured 1970s by Alfred Kill international, Germany. (6)

DKK 30,000 / € 4,050

1438

KAARE KLINT

b. Frederiksberg 1888, d. Copenhagen 1954

Easy chair with mahogany frame. Sides, back and loose seat cushion upholstered with patinated red leather. Model 5313. This example made approx. 1930s by Rud. Rasmussen Cabinetmakers, Copenhagen, with maker's paper label.

KK label indistinctly numbered.

Literature: Gorm Harkær, Klintiana: "Kaare Klint", ill. vol. 1, pp. 361, 364 and in vol. 2, p. 89.

Literature: Grete Jalk [ed.]: "40 Years of Danish Furniture Design", vol. 2, ill. pp. 28-29.

DKK 20,000-30,000 / € 2,700-4,050



1438



1439

KAARE KLINT

b. Frederiksberg 1888, d. Copenhagen 1954

A pair of freestanding mahognay addition sofa units. Sides, seat and back upholstered with original, patinated red leather. Fitted with leather covered buttons. Model 4698. Designed 1933. These examples made approx. 1975 by Rud. Rasmussen Cabinetmakers, Copenhagen, with maker's paper label. L. 91 cm. (2)

KK label no. 36275.

Literature: Gorm Harkær, Klintiana: "Kaare Klint", vol. 2, ill. p. 94. DKK 80,000 / € 11,000



1439



1440

1440
KAARE KLINT

b. Frederiksberg 1888, d. Copenhagen 1954

Mahogany bergère with rosewood inlays and "shoes". Sides, seat and back with woven cane. Loose cushions in seat and back upholstered with patinated, natural leather. Model 4488. Designed 1931. This example made 1970s by Rud. Rasmussen Cabinetmakers, with maker's paper label.

KK label no. 36308.

Literature: Grete Jalk [ed.]: "40 Years of Danish Furniture Design", vol. 4, ill. p. 214.

DKK 15,000 / € 2,000



1441



**1441
KAARE KLINT**

b. Frederiksberg 1888, d. Copenhagen 1954

Freestanding two seater sofa with six-legged mahogany frame. Sides, seat and back upholstered with reddish brown leather. Model 5011. Designed 1935. This example made approx. 1960s by Rud. Rasmussen Cabinetmakers, Copenhagen. H. 92 cm. L. 132 cm. D. 75 cm.

Literature: Gorm Harkær, Klintiana: "Kaare Klint", vol. 2, ill. p. 94. DKK 30,000-40,000 / € 4,050-5,400

**1442
POUL HENNINGSEN**

b. Ordrup 1894, d. Hillerød 1967

"PH Four-Shade Lamp". 4/4½/4 pendant with bayonet socket house of browned brass. Shades of yellow frosted glass. This example manufactured 1930s by Louis Poulsen. Diam. 43 cm.

The lamp was first time presented at the exhibition "Modern Homes" in Forum, Copenhagen 1931.

Literature: "Light Years Ahead", ill. p. 242.

DKK 30,000-40,000 / € 4,050-5,400

1443

FRITS HENNINGSEN

b. 1889, d. 1965

A pair of lounge chairs with tapering oak legs. Sculptural seat and back upholstered with patinated reddish brown leather. These examples made 1950-1960s by cabinetmaker Frits Henningsen. H. resp. 92. and 95 cm. (2)

DKK 125,000-150,000 / € 17,000-20,000



1443





1444

1444

HERLUF SONNE-HANSEN

b. Holbæk 1883, d. Skodsborg 1975

A rare Art Deco bar cabinet of polished birch, front with three doors. Gold painted interior with spiral shelf construction in red and black. Doors inside with amusing "proverbs". Made 1932 by cabinet-maker Anders Svendsen, with maker's metal plaque. H. 125 cm. W. 74 cm. D. 33 cm.

Literature: This cabinet is illustrated in "Nyt tidskrift for Kunstindustri" 1932, p. 78.

This bar cabinet is an amusing and rare Danish example of pure Art Deco. Herluf Sonne-Hansen is not known for designing many pieces of furniture, but apparently he had a liking for bar cabinets. Apart from this cabinet, he also designed a cabinet of a similar type that was exhibited in the danish pavillion at the Exposition Internationales in Paris, 1937.

DKK 25,000-40,000 / € 3,350-5,400



"Nyt tidskrift for Kunstindustri" 1932.



Paris 1937

1445 ^{CD}

FRITS SCHLEGEL

b. 1896, d. 1965

A unique Cuban mahogany dining room suite. Comprising an oval, two-pillar dining table on octagonal legs, with extension and five extra leaves, one of which "half" size. A set of 14 matching chairs. Seat and back upholstered with red leather, fitted with brass nails. Sideboard with three doors and three drawers in front, inside with cutlery storage. Top with brown leather. Serving trolley with brass fittings and castors, front with two drawers. Top and shelf covered with brown leather. Made to order in 1931. Table: H. 73,5 cm. W. 110 cm. L. 170./433 cm. Sideboard: H. 85 cm. L. 158 cm. (22)

Provenance: Professor Mr. Oscar Alfred Borum, hence by descent in the family.

Due to the friendship between Borum and Schlegel, the latter designed a town house for his friend Borum at Sundvænget 18 in Hellerup, Copenhagen. Several unique pieces of furniture were designed specifically for this house, amongst them this present dining room suite. The house with its interior was completed in 1931. DKK 150,000-200,000 / € 20,000-27,000



1445



1445



1445



1445



1446

1446
OTTO SCHULZ

A pair of easy chairs. Tapering legs of dark polished wood. Seat, sides and back upholstered with original patinated brown leather. These examples manufactured approx. 1930s by Boet, Gothenburg. (2)

DKK 30,000 / € 4,050

1447

FRITS HENNINGSEN

b. 1889, d. 1965

Two seater high-back sofa with oak legs. Sides, seat, back and integrated armrests upholstered with patinated brown leather. This example made approx. 1950s by cabinetmaker Frits Henningsen. L. 150 cm. Model presented at *The Copenhagen Cabinetmakers' Guild Exhibition at Designmuseum Danmark, 1936.*

Literature: Grete Jalk [ed.]: "40 Years of Danish Furniture Design", vol. 1, p. 245.

DKK 100,000-150,000 / € 13,500-20,000



1447



1448



1449

1448

SWEDISH DESIGN

Handwoven wool reversible carpet in "rölakan" flat weave technique. Geometric pattern in grey and yellow shades. Unsigned. Sweden 20th century. 244 x 173 cm. DKK 18,000-20,000 / € 2,400-2,700

1449

AXEL EINAR HJORTH

b. 1888, d. 1959

Console table with top and semicircular shelf of birch, walnut sides. Tabletop, base and shelf with black painted edges. This example manufactured 1930s by Nordiska Kompaniet, Sweden. H. 77 cm. W. 78 cm. L. 160 cm. DKK 40,000 / € 5,400

1450

"HOS WULFF"

Easy chair with frame and curved armrests of dark polished oak, seat and back reupholstered with shaggy white sheepskin. This example manufactured 1950s. DKK 50,000-75,000 / € 6,700-10,000



1450

1451

ARNE NORELL, ATTRIBUTED

b. 1917, d. 1971

A pair of asymmetric easy chairs. Upholstered with white sheepskin. Tapering birch wood legs. Probably manufactured circa 1950s by Gösta Westerbergs Möblar, Stockholm Sweden. (2)

DKK 50,000 / € 6,700

1452

SWEDISH DESIGN

Handwoven wool carpet in "rölakan" flat weave technique. Unsigned. Pattern probably made after Märta Måås-Fjetterström's "Dukater". This example made approx. 1950-1960s, Sweden. 315 x 200 cm.

DKK 50,000 / € 6,700



1451



1452

1453 ©

EINAR BARNES

b. Talvik 1908, d. Oslo 1985

"Oval". Six oval wastepaper baskets of moulded wood. Comprising three of Brazilian rosewood and three of teak. Handles and sides of resp. mahogany, teak and rosewood. Designed 1969. These examples manufactured 1970s by P.S. Heggen, Norway, stamped. H. 44,5 cm. W. 39 cm. (6)

Comprising:

2 of teak with teak handles/sides.

1 of teak with mahogany handles/sides.

2 of Brazilian rosewood with Brazilian rosewood handles/sides.

1 of Brazilian rosewood with mahogany handles/sides.

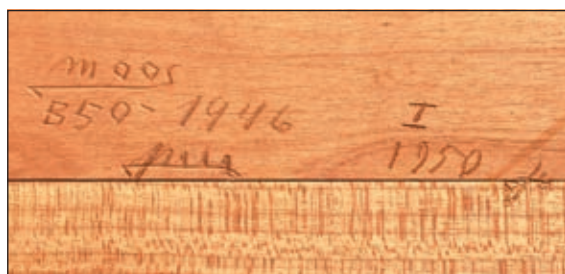
DKK 20,000-30,000 / € 2,700-4,050



1453



1454



1454
PEDER MOOS

b. Nybøl 1906, d. 1991

A rectangular cherry wood side table on four "drumstick" legs. Rounded edges and light wood joints. Signed Moos, B50-1946, I 1950. Made 1946 by cabinetmaker Peder Moos. H. 64,5 cm. L. 60 cm. W. 47,5 cm.

Acquired by the present owner's uncle directly from Peder Moos.

DKK 60,000 / € 8,050



1455

1455

FINN JUHL

b. Frederiksberg 1912, d. Ordrup 1989

A large solid teak bowl. Designed 1951. Made by Magne Mønsen for Kay Bojesen. Stamped Kay Bojesen, Denmark. H. 17 cm. L. 37,5 cm. W. 34,8 cm.

Provenance: Acquired by current owner in 1986 during a trip to Tokyo, Japan at the Imperial Hotel. Here it had been displayed at the Tea restaurant since the 1960s.

Literature: Esbjørn Hiort: "Finn Juhl", ill. pp. 124-128.

DKK 25,000 / € 3,350

1456

DANISH FURNITURE DESIGN

A rosewood double-chest of drawers, front with eight drawers. This example manufactured approx. 1970s. H. 75 cm. D. 55 cm. W. 182 cm.

DKK 20,000 / € 2,700



1456



1457

1457
POUL HENNINGSEN

b. Ordrup 1894, d. Hillerød 1967

"PH-6/6". Large pendant with "bayonet" socket house stamped "Pat. Appl.". Shades of patinated copper. This example manufactured 1926-1928 by Louis Poulsen. Diam. 60 cm.

DKK 40,000-50,000 / € 5,400-6,700

1458 *

FINN JUHL

b. Frederiksberg 1912, d. Ordrup 1989

"FJ-44". A sculptural walnut wood armchair. Seat upholstered with natural leather. This example manufactured 2010s by Onecollection, with metal plaque.

A matching custom-made dustbag and cardboard box is included.

The "FJ-44" chair is regarded as one the most important chairs from Finn Juhl. Designed and presented at the Copenhagen Cabinetmakers' Guild exhibition in 1944, the chair marks the beginning of Finn Juhls most fruitful period from 1944-1950. With this chair he expresses his unique, sculptural design solely in wood for the first time.

DKK 25,000 / € 3,350



1458



1459

1459 *

FINN JUHL

b. Frederiksberg 1912, d. Ordrup 1989

"FJ-44". A sculptural walnut wood armchair. Seat upholstered with natural leather. This example manufactured 2010s by Onecollection, with metal plaque.

A matching custom-made dustbag and cardboard box is included.

DKK 25,000 / € 3,350

1460

FINN JUHL

b. Frederiksberg 1912, d. Ordrup 1989

"Judas Table". Oval teak dining table with extension and two leaves. Top's underside with profiled rim. Mounted on round, tapering legs. This example made approx. 1960s by cabinetmaker Niels Vodder. H. 72 cm. W. 120 cm. L. 180./290 cm. Leaves each L. 55 cm. W. 120 cm. (3)

DKK 30,000-40,000 / € 4,050-5,400



1460





1461

1461

VIGGO BOESEN

b. Copenhagen 1907, d. 1985

"Petra II". Easy chair with teak frame. Sides, back and loose seat cushion upholstered with orange-red wool. Back fitted with buttons. Designed 1956. This example made 1956 by cabinetmaker A. J. Iversen.

Original receipt from cabinetmaker A. J. Iversen, dated 28/8 1956 is included.

The model was presented at The Copenhagen Cabinetmakers' Guild Exhibition in 1956.

Literature: Grete Jalk [ed.]: "40 Years of Danish Furniture Design", vol. 3, ill. pp. 372-373. DKK 50,000-75,000 / € 6,700-10,000

1462

EJNER LARSEN

b. 1917, d. 1987

AKSEL BENDER MADSEN

b. 1916, d. 2000

Coffee table with teak frame, sleigh legs with inlays of dark wood at joints. Square Porsgrunn marble top with slightly raised edges. This example made approx. 1960 by cabinetmaker Willy Beck, with maker's paper label. H. 55 cm. L. 90 cm. W. 90 cm.

DKK 75,000-100,000 / € 10,000-13,500



1462

1463

EJNER LARSEN

b. 1917, d. 1987

AKSEL BENDER MADSEN

b. 1916, d. 2000

A rare freestanding teak desk, runner legs with cross-stretchers. Rail with four drawers. This example made 1950s by cabinetmaker Willy Beck, with maker's metal plaque. H. 74 cm. W. 83 cm. L. 186 cm.

This amazing table with drawers on both sides is a variant of a table presented at the Copenhagen Cabinetmaker's Guild Exhibition in 1953.

DKK 90,000-110,000 / € 12,000-15,000





1463



1464

1464

SWEDISH DESIGN

Handwoven wool carpet in "rölakan" flat weave technique with polychrome geometric pattern in light green, yellow and brown shades on a light base. Signed. L. 265 x 189 cm.

DKK 18,000-20,000 / € 2,400-2,700

1465

SWEDISH DESIGN

A long solid oak bench on four round, tapering legs. Top with visible joints. This example manufactured 1960s, Sweden. H. 35 cm. W. 35 cm. L. 300 cm.

DKK 30,000-40,000 / € 4,050-5,400



1465



1466

1466

PETER HVIDT

b. Copenhagen 1916, d. s.p. 1986,

ORLA MØLGAARD-NIELSEN

b. Ålborg 1907, d. Hellerup 1993

"Portex". A set of six beech armchairs. Seat and back upholstered with patinated natural leather. Designed 1945. Manufactured approx. 1950s by Fritz Hansen. (6) *DKK 20,000-30,000 / € 2,700-4,050*





1467

1467

EJNER LARSEN

b. 1917, d. 1987

AKSEL BENDER MADSEN

b. 1916, d. 2000

Circular teak coffee table on three tapering legs. Top with raised edge. Model 1804. Designed 1953. This example made 1950-1960s by cabinetmaker Willy Beck, with maker's metal plaque. H. 55 cm. Diam. 100 cm.

Literature: Grete Jalk [ed.]: "40 Years of Danish Furniture Design", vol. 3, p. 237, 275.

DKK 20,000 / € 2,700

1468

IB KOFOD-LARSEN

b. 1921, d. 2003

A teak double-dresser with tapering legs. Front with six drawers, carved handles. Two top drawers with compartmentalized interior. Model 249. This example manufactured 1960s by Fredericia Møbelfabrik. H. 82 cm. W. 50 cm. L. 198 cm.

Literature: "Mobilia", advertisement. No. 56-57. March/April, 1960. DKK 25,000 / € 3,350



1468



1469

1469
YNGVE EKSTRÖM

b. Hagafors 1913, d. 1988

"Thema". A rare, foldable chaise of patinated oak. Seat and back with woven cane with brass fittings. Three-piece cushion upholstered with beige, orange and brown wool. Designed 1953. This example manufactured approx. 1950s. DKK 40,000 / € 5,400



1470



1471

1470

LENA - KAJSA ALMÉN

"Fästningen". Handwoven wool carpet in "rölakan" flat weave technique, with polychrome pattern in orange, red, brown and black shades. Signed monogram. Made by Vävaregården. 240 x 170 cm.

DKK 18,000-20,000 / € 2,400-2,700

1471

KURT ØSTERVIG

b. 1912, d. 1986

"The Hunting Chair". A pair of patinated oak easy chairs. Seat and back with patinated natural leather. Model 168. These examples manufactured approx. 1970s by K. P. Jørgensens møbler. (2)

DKK 25,000 / € 3,350



1472



1472

BØRGE MOGENSEN

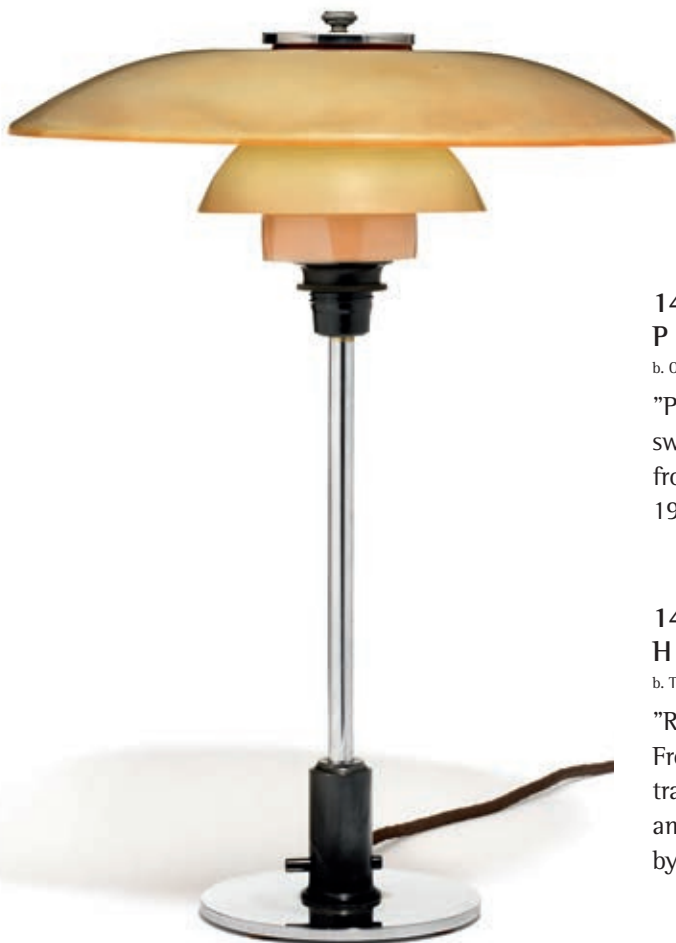
b. Aalborg 1914, d. Gentofte 1972

"The Spanish Chair". A pair of solid oak armchairs. Seat and back with patinated natural leather. Model 2226. Designed 1958. These examples manufactured 1960s by Fredericia Stolefabrik. (2)

This model was presented at The Copenhagen Cabinet-makers' Guild Exhibition at Designmuseum Danmark in 1958.

Literature: Grete Jalk [ed.]: "40 Years of Danish Furniture Design", vol. 4, pp. 66-69.

DKK 40,000 / € 5,400



1473

1473
POUL HENNINGSEN

b. Ordrup 1894, d. Hillerød 1967

"PH-3,5/2". Table lamp with chromed metal frame, switch- and socket house of black bakelite with red/frosted glass shades. This example manufactured 1930s by Louis Poulsen. H. 44 cm.

DKK 20,000 / € 2,700

1474
HANS J. WEGNER

b. Tønder 1914, d. Gentofte 2007

"RY 25". Rosewood sideboard with rectangular legs. Front with two tambour doors. Oak interior with trays and adjustable shelves. Steel handles. This example manufactured 1968 by RY Møbler, stamped by maker. H. 79 cm. L. 200 cm. D. 49 cm.

DKK 25,000 / € 3,350



1474



1475

1475

POUL HENNINGSEN

b. Ordrup 1894, d. Hillerød 1967

"PH-2/2". Tall miniature table lamp with chromed metal frame. Socket- and switch house of brown bakelite. Shades and bottom bowl of amber coloured glass. This example manufactured since 1933 by Louis Poulsen. H. 40 cm.

Literature: "Light Years Ahead", ill. p. 164.

DKK 40,000 / € 5,400

1476 ©

EJVIND A. JOHANSSON

b. 1923, d. 2002

Brazilian rosewood chest of drawers on round, tapering legs. Front with three large and two small drawers. Model 91. This example manufactured 1960s by Gern Møbelfabrik. H. 82 cm. W. 90 cm. D. 45 cm.

DKK 20,000 / € 2,700



1476



1477

POUL KJÆRHOLM

b. Østervrå 1929, d. Hillerød 1980

“PK 31/3”. Freestanding three seater sofa with chromed steel frame. Sides, back and loose cushions in seat and back upholstered with original black leather. Designed 1958. This example manufactured 1970s by E. Kold Christensen. L. 201 cm.

DKK 30,000-40,000 / € 4,050-5,400

1478

POUL KJÆRHOLM

b. Østervrå 1929, d. Hillerød 1980

“PK 31/1”. A pair of easy chairs with chromed steel frame. Sides, back and loose cushions in seat and back upholstered with original black leather. Designed 1958. These examples manufactured 1970s by E. Kold Christensen, stamped by maker. (2)

DKK 30,000-40,000 / € 4,050-5,400



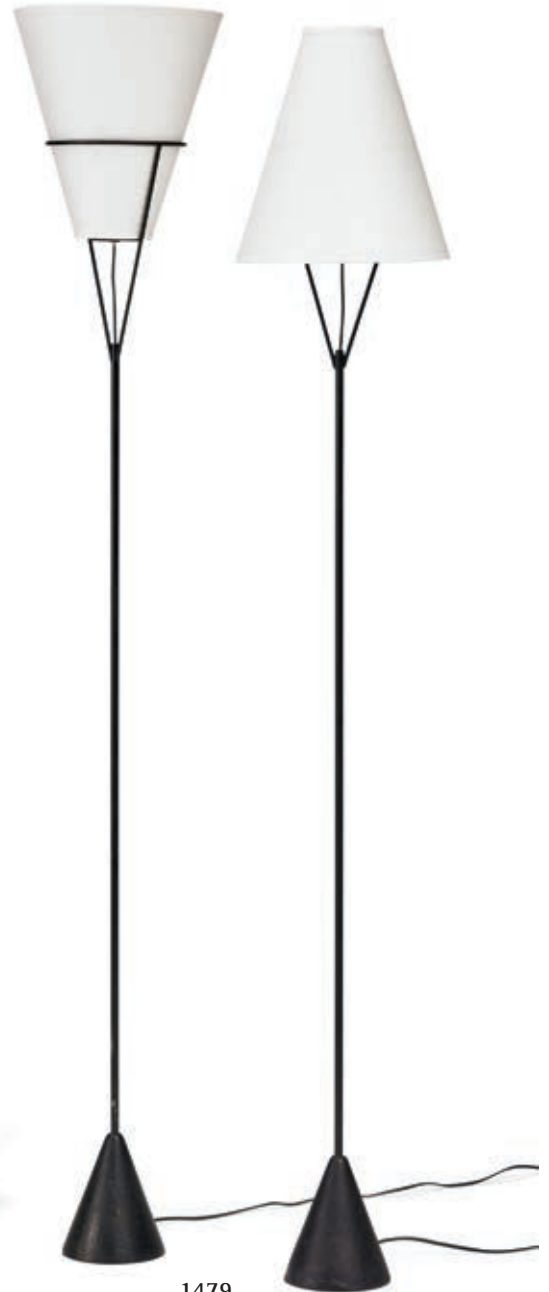


1478

1479
CARL AUBÖCK

b. 1900, d. 1957

A pair of black lacquered cast iron floor lamps on conical shaped base. Reversible conical shades for up- and down light. These examples manufactured approx. 1950s under licence for retailer Illums Bolighus. H. 148 cm. (2) *DKK 25,000 / € 3,350*



1479

1480

ARNE JACOBSEN

b. Copenhagen 1902, d. s.p. 1971

"The Swan". A pair of easy chairs with tilting function. Profiled aluminium stem and foot. Sides, seat and back upholstered with original, patinated black leather. Model 3320. These examples manufactured 1966 by Fritz Hansen. (2)

Provenance: Acquired by present owner in 1966.

DKK 20,000 / € 2,700



1480



1481 ©

ARNE JACOBSEN

b. Copenhagen 1902, d. s.p. 1971

Circular Brazilian rosewood coffee table with aluminum frame and base. This example manufactured 1966 by Fritz Hansen. H. 48 cm. Diam. 110 cm.

Provenance: Acquired by present owner in 1966.

DKK 10,000 / € 1,350



1481

1482

ARNE JACOBSEN

b. Copenhagen 1902, d. s.p. 1971

"The Egg Chair". Early easy chair with profiled aluminum base. Sides, back and loose seat cushion upholstered with original, patinated black leather. Model 3317. Designed 1958. This example manufactured in 1966 by Fritz Hansen, with maker's label.

Provenance: Acquired by present owner in 1966.

DKK 30,000-40,000 / € 4,050-5,400



1482



1483

1483

ARNE JACOBSEN

b. Copenhagen 1902, d. s.p. 1971

"The Egg Chair". Early easy chair with profiled aluminum base. Sides, back and loose seat cushion upholstered with original, patinated black leather. Model 3317. Designed 1958. This example manufactured 1966 by Fritz Hansen, with maker's label.

Provenance: Acquired by present owner in 1966.

DKK 30,000-40,000 / € 4,050-5,400



1484

ARNE JACOBSEN

b. Copenhagen 1902, d. s.p. 1971

Wall lamp with frosted glass shade on twin bracket brass frame. Inside with double bakelite sockets. This example manufactured 1930s by Louis Poulsen. H. 41 cm. Diam 30 cm. *Designed for Gentofte Stadium and K.F.U.M. 1936-1943.*

*Literature: Felix Solaguren-Beascoa: "Jacobsen 2", ill. pp. 56-57.
DKK 20,000 / € 2,700*



1484

1485

ARNE JACOBSEN

b. Copenhagen 1902, d. s.p. 1971

"The Ant Chair". A set of eight chairs on three-legged chromed steel frame. Seat and back of moulded, laminated rosewood. Model 3100. Designed 1952. These examples manufactured 1960s by Fritz Hansen, stamped by maker. (8) *DKK 30,000-40,000 / € 4,050-5,400*



1485

1486 ©

BODIL KJÆR

b. Hatting 1932

A freestanding Brazilian rosewood desk with two matching drawer sections on castors. Frame and castors of chromed steel. Top's rail with four integrated drawers. Central locking mechanism. Drawer sections each with three drawers. Designed 1959. These examples manufactured approx. 1960-1970s by E. Pedersen & Søn, with maker's paper label. Desk: H. 72,5 cm. W. 91,5 cm. L. 184 cm. Drawer sections: H. 49 cm. D. 61 cm. W. 44 cm. (3)

DKK 60,000 / € 8,050



1486



1487



1486



1487

BRDR. NØRGAARD

Freestanding rosewood sideboard. Chromed steel legs with rosewood "shoes". Front with four sliding doors, oak interior with adjustable shelves and pull-out tray. Model 301. Designed 1961. Manufactured approx. 1960s by Nørgaard Møbelfabrik. H. 81 cm. D. 48 cm. L. 245 cm.

Literature: "Mobilia", 1961. DKK 25,000 / € 3,350



1488

POUL KJÆRHOLM

b. Østervrå 1929, d. Hillerød 1980

"PK 140". A dining table with round, brushed steel legs. Square solid mahogany top with cross-inlay. Designed 1971. This example manufactured 1970s by E. Kold Christensen. H. 68 cm. W. 140 cm. L. 140 cm.

DKK 25,000 / € 3,350

1489

HANS J. WEGNER

b. Tønder 1914, d. Gentofte 2007

"JH 701". A set of 14 armchairs with chromed steel frame. Mahogany backs with inlays. Seat upholstered with black fabric. Designed 1965. These examples manufactured approx. 1970s by cabinetmaker Johannes Hansen, three with maker's label. (6)

The model was presented at the Copenhagen Cabinetmaker's Guild Exhibition in 1965.

Literature: Grete Jalk [ed.], "Dansk Møbelkunst gennem 40 Aar", 1987, vol. 4, ill. pp. 300-303.

DKK 50,000-60,000 / € 6,700-8,050



1490

INGRID DESSAU

b. Svalöv 1923, d. 2000, maiden name Ingrid Peterson

Handwoven wool turning carpet with geometric pattern in grey and brown shades. Unsigned. Sweden, 20th century. 234 x 167 cm. *DKK 15,000 / € 2,000*



1490



1489



1491



1491

HANS J. WEGNER

b. Tønder 1914, d. Gentofte 2007

"The Chair". A pair of mahogany armchairs. Seats upholstered with natural leather. Model JH 503. Designed 1949. These examples made 1960s by cabinetmaker Johannes Hansen, stamped by maker. (2) *Literature: Grete Jalk [ed.], "40 Years of Danish Furniture Design", Vol. 3, ill. pp. 98-101, 140-142.*

DKK 20,000-25,000 / € 2,700-3,350

1492

POUL KJÆRHOLM

b. Østervrå 1929, d. Hillerød 1980

"PK 55". A desk with chromed steel frame and ash top. Designed 1957. This example manufactured 1970s by E. Kold Christensen, stamped by maker. H. 68,5 cm. W. 90 cm. L. 180 cm.

DKK 20,000-25,000 / € 2,700-3,350



1493

POUL KJÆRHOLM

b. Østervrå 1929, d. Hillerød 1980

"PK 33". Stool with chromed steel frame. Loose seat cushion upholstered with original, patinated natural leather. Designed 1958. This example manufactured approx. 1960s by E. Kold Christensen, stamped by maker. Diam. 52 cm.

DKK 15,000-20,000 / € 2,000-2,700



1493



1492



1494

1494

HANS-AGNE JAKOBSSON

b. 1919, d. 2009

A pair of floor lamps with black lacquered metal frame. Brass fittings and white lacquered metal shades. Manufactured by AB Hans-Agne Jakobsson, Markaryd. H. 120 cm. (2)

DKK 20,000 / € 2,700

1495

SWEDISH DESIGN

Handwoven wool carpet in "rölakan" flat weave technique with geometric pattern in green shades on grey base. Unsigned. Sweden, 20th century. 142 x 269 cm.

DKK 18,000-20,000 / € 2,400-2,700



1495

1496 ©

FINN JUHL

b. Frederiksberg 1912, d. Ordrup 1989

"FJ 45". A Brazilian rosewood easy chair. Seat, back and loose seat cushion upholstered with original, light green wool. Designed 1945. These examples made 1970s by cabinetmaker Niels Vodder, stamped by maker. DKK 100,000-125,000 / € 13,500-17,000



1496



1497

1497

FINN JUHL

b. Frederiksberg 1912, d. Ordrup 1989

Freestanding two seater sofa and matching easy chair with round, tapering teak legs. Sides, seat and back upholstered with light green plush. Back fitted with buttons. These examples manufactured 1950s by Søren Willadsen, Vejen, sofa with maker's paper label. L. 145 cm.

Model presented at the exhibition "Købestævnet" in Fredericia 1950.

Literature: Charlotte & Peter Fiell: 50s Decorative Art, Taschen 2000, ill. p. 96.

DKK 150,000-200,000 / € 20,000-27,000



1497



1498

1498 ©

FINN JUHL

b. Frederiksberg 1912, d. Ordrup 1989

"FJ 53". A freestanding two-seater Brazilian rosewood sofa with "floating" armrests on brass fittings. Sides, seat and back upholstered with original, patinated green coloured leather. Designed 1953. This example made approx. 1977 by cabinetmaker Niels Vodder, stamped by maker. L. 134 cm.

Provenance: Acquired by present owner in 1977.

The model was presented at The Copenhagen Cabinet-makers' Guild Exhibition ins 1953.

Literature: Grete Jalk [ed.]: "40 Years of Danish Furniture Design", vol. 3, ill. pp. 270-271.

DKK 50,000-60,000 / € 6,700-8,050



1499 ©

FINN JUHL

b. Frederiksberg 1912, d. Ordrup 1989

"FJ 53". A pair of Brazilian rosewood easy chairs with floating armrests on brass fittings. Sides, seat and back upholstered with patinated original green coloured leather. Designed 1953. These examples made approx. 1977 by cabinetmaker Niels Vodder, stamped by maker. (2)

Provenance: Acquired by present owner in 1977.

The model was presented at The Copenhagen Cabinet-makers' Guild Exhibition in 1953.

Literature: Grete Jalk [ed.]: "40 Years of Danish Furniture Design", vol. 3, ill. pp. 270-271.

DKK 100,000 / € 13,500



1499

1500

FINN JUHL

b. Frederiksberg 1912, d. Ordrup 1989

"Chieftain Chair". A mahogany easy chair. Seat, armrests and back upholstered with natural leather, back fitted with buttons. Designed 1949. Frame made approx. 1970s by upholsterer Ivan Schlechter. DKK 100,000 / € 13,500



1500



1500



1501



1501

FINN JUHL

b. Frederiksberg 1912, d. Ordrup 1989

"BO 65". A teak dining table with visible joints, extension and two leaves. This example manufactured approx. 1960s by Bovirke, with maker's paper label. H. 72 cm. W. 95 cm. L. 140 cm. L. incl. leaves 240 cm.

DKK 20,000 / € 2,700



1503

1502

SWEDISH DESIGN

Handwoven wool carpet in "rölakan" flat weave technique with polychrome geometric pattern on a light base. Signed monogram ABr. Sweden, 20th century. 168 x 172 cm.

DKK 12,000-15,000 / € 1,600-2,000

1503

FINN JUHL

b. Frederiksberg 1912, d. Ordrup 1989

A set of six teak chairs. Comprising four side chairs and two armchairs. Seat and back upholstered with patinated, natural leather. Model BO-63 and BO-72. These examples manufactured approx. 1960s by Bovirke, one chair with maker's paper label. (6)

DKK 50,000-60,000 / € 6,700-8,050

1504 ©

IB KOFOD-LARSEN

b. 1921, d. 2003

"Elizabeth". Easy chair with Brazilian rosewood frame. Seat, back and loose seat cushion upholstered with patinated natural leather. Model U-56. Designed 1956. This example made 1960s by Christensen & Larsen Cabinetmakers, stamped by maker.

The model was presented at The Copenhagen Cabinet-makers' Guild Exhibition in 1958.

Literature: Grete Jalk [ed.]: "40 Years of Danish Furniture Design", vol. 3, ill. pp. 48-49.

DKK 60,000-80,000 / € 8,050-11,000



1505 ©

IB KOFOD-LARSEN

b. 1921, d. 2003

"Elizabeth". Easy chair and matching stool with Brazilian rosewood frame. Seat, back and loose seat cushion upholstered with original, patinated black leather. Model U-56. Designed 1956. These examples made 1960s by Christensen & Larsen Cabinetmakers, chair stamped by maker. (2)

DKK 75,000-100,000 / € 10,000-13,500



1505

1506 ©

IB KOFOD-LARSEN

b. 1921, d. 2003

A rectangular, Brazilian rosewood coffee table on round, slightly tapering legs. Underlying shelf. This example made 1960s by Christensen & Larsen Cabinetmakers, stamped by maker. H. 54 cm. W. 60 cm. L. 160 cm. *DKK 15,000-20,000 / € 2,000-2,700*



1507



1506



1507 ©

IB KOFOD-LARSEN

b. 1921, d. 2003

"Elizabeth". Two seater sofa with Brazilian rosewood frame. Sides, back and loose seat cushion upholstered with original, patinated black leather. Model U-56. Designed 1956. This example made 1960s by Christensen & Larsen Cabinetmakers. L. 145 cm.

This model was presented at The Copenhagen Cabinetmakers' Guild Exhibition in 1958.

Literature: Grete Jalk [ed.]: "40 Years of Danish Furniture Design", vol. 3, ill. pp. 48-49.

DKK 100,000-125,000 / € 13,500-17,000



1508

POUL HENNINGSEN

b. Ordrup 1894, d. Hillerød 1967

"PH-2/2". Rare, adjustable piano lamp. Frame, switch- and socket house of browned brass. Original one-layer opal glass shades. This example manufactured 1931-1932 by Louis Poulsen. H. max. 33 cm. L. 50 cm.

Literature: *"Light Years Ahead"*, ill. p. 186.

DKK 125,000-150,000 / € 17,000-20,000



1508

INDEX

A

Aalto, Alvar	1413
Almén, Lena-Kajsa	1470
Andersen, Knud	1310, 1333, 1350
Auböck, Carl	1479

B

Bang, Arne	1308, 1309
Barnes, Einar	1453
Bender Madsen, Aksel	1374
	1462, 1463, 1467
Bernadotte, Sigvard	1255, 1265
	1294, 1295, 1296, 1300
Bindesbøll, Thorvald	1250
	1272, 1316, 1317
Bluitgen, Ib	1291
Boesen, Viggo	1461
Bohlin, Jonas	1420
Bojesen, Kay	1290, 1336, 1337
Brdr. Nørgaard	1487
Bøgelund, Gerd	1335

C

Cadovius, Poul	1435
Carlander, Rakel	1372

D

Danish Cabinetmaker	1427
Danish Furniture Design	1434, 1456
Dessau, Ingrid	1490

E

Eckhoff, Tias	1293
Ekström, Yngve	1469

F

Fabricius, Preben	1424, 1437
Fisker, Kay	1251
	1266, 1368, 1369

G

Gauguin, Jean René	1312
	1313, 1314, 1315
Griegst, Arje	1247, 1326
Gunnløgsson, Halldor	1356

H

Hagen, Ole	1252
Halier, Carl	1333
Hansen, Hans Christian	1385
Hansen, Karl Gustav	1288
Henningsen, Frits	1365, 1443, 1447
Henningsen, Poul	1366, 1376
	1381, 1382, 1401
	1411, 1417, 1418
	1419, 1442, 1457
	1473, 1475, 1508
Hjorth, Axel Einar	1379, 1449
“Hos Wulff”	1450
Hundevad, Poul	1391
Hvidt, Peter	1466

J

Jacobsen, Arne	1405, 1406
	1480, 1481, 1482
	1483, 1484, 1485
Jakobsson, Hans-Agne	1494
Jensen, Georg	1246, 1257
	1258, 1262, 1264
	1268, 1269, 1271
	1276, 1277, 1278
	1280, 1282, 1284
	1286, 1297, 1299
Jensen, Søren Georg	1292
Johansson, Ejvind A.	1476
Johansson, Judith	1361, 1393
Juhl, Finn	1392, 1394, 1396
	1398, 1414, 1415
	1416, 1455, 1458
	1459, 1460, 1496
	1497, 1498, 1499
	1500, 1501, 1503
Jørgensen, Erik Ole	1362
Jørgensen, Viggo S.	1385

K

Kastholm, Jørgen	1424, 1437
Kgl. P.	1350
Kindt-Larsen, Edvard	1428

Kindt-Larsen, Tove	1428
Kjær, Bodil	1486
Kjærholm, Poul	1407, 1408
	1422, 1477, 1478
	1488, 1492, 1493
Klint, Kaare	1409, 1438
	1439, 1440, 1441
Knox, Archibald	1267
Koch, Mogens	1375
Kofod-Larsen, Ib	1468, 1504
	1505, 1506, 1507
Koppel, Henning	1240, 1241, 1243
	1244, 1248, 1249
Kristiansen, Bo	1338, 1339, 1340
Kronlund, Irma	1429

L

Larsen, Ejner	1374
	1462, 1463, 1467
Lassen, Flemming	1384
Lassen, Mogens	1383, 1412
Lauritzen, Vilhelm	1380, 1386
	1387, 1388, 1390
Lindstrand, Vicke	1323

M

Mogensen, Børge	1472
Moos, Peder	1454
Mølgaard-Nielsen, Orla	1466
Møller, Niels O.	1426

N

Nielsen, Harald	1259, 1260
	1261, 1263, 1270
	1273, 1274, 1275
	1281, 1285, 1289
Nordström, Patrick	1311, 1334
Norell, Arne	1451
Nyman, Gunnel	1325

P

Parkdal, Ulla	1433
Petersen, Gustav	1245

INDEX

Q

Quistgaard, Jens H. 1242

R

Rohde, Johan 1253, 1254, 1256
1279, 1283, 1287, 1298

S

Salto, Axel 1304
1305, 1306, 1307
1327, 1328, 1329
1330, 1331, 1332
1344, 1345, 1346
1347, 1348, 1349

Sarfatti, Gino 1421

Schlegel, Frits 1380, 1445

Schulz, Otto 1446

Siesbye, Alev Ebüzziya 1341,
1342, 1343

Sonne-Hansen, Herluf 1444

Svanström, Maj 1351

Swedish Design 1359, 1378
1448, 1452, 1464
1465, 1495, 1502

Sørensen, Chris 1355

Sørensen, Johnny 1395

T

Thorsson, Nils 1310

Thygesen, Rud 1395

Thylstrup, Georg 1311, 1334

U

Utzon, Lin 1318, 1319, 1320

V

Vasegaard, Gertrud 1321, 1322

Vasegaard, Myre 1321

Vodder, Arne 1430

Voltelen, Mogens 1389

W

Wanscher, Ole 1367, 1370, 1371
1373, 1377, 1425

Wegner, Hans J. 1352, 1353

1354, 1357, 1358

1360, 1363, 1364

1397, 1399, 1400

1402, 1403, 1404

1410, 1423, 1436

1474, 1489, 1491

Weiss, Per 1301, 1302, 1303

Wikkelsø, Illum 1431, 1432

Wirkkala, Tapio 1324

Ø

Østervig, Kurt 1471



CITES EXPORT PERMIT

Catalogue numbers marked with (©) are items covered by the Washington Convention. Items made or processed from 1947 and onwards are sold with a CITES certificate, which is valid within the EU. Items processed before 1947 do not require a CITES certificate for a sale within the EU. For export to countries outside the EU, a Danish CITES export permit is required for items processed both before and after 1947, and possibly also a corresponding import permit for the country, which the export of the item is intended for.

DISPATCH

Collection of purchases bought at traditional auctions must be no later than 2 weeks after the last auctionday.

Uncollected items will without further notice be sent into storage at the expense and risk of the buyer.

SALES RESULTS

Sales results from the latest auctions are available at our website: bruun-rasmussen.dk

PHOTO

Photos of all items are available at our website: bruun-rasmussen.dk

EURO

Bids and invoicing are made in DKK.

For the conversion from DKK into Euro, Bruun Rasmussen has used the official rate of exchange from Denmark's Nationalbank (the Danish National Bank) at the time of preparation of the catalogue.

The amount in Euro is, in Bruun Rasmussen's judgment, roughly adjusted to presentable figures.

CONDITION

Bruun Rasmussen draws attention to the fact that, as a rule, no information is provided regarding the condition of the lots (cf. conditions of purchase § 10).

However, we refer to our website: www.bruun-rasmussen.dk where information regarding condition, repairs, etc. can usually be found for the individual lot. Should this information be insufficient, further details can be obtained by contacting one of the experts of the department.

BANKERS

Danske Bank · Account: 30014310970638
IBAN: DK4130004310970638
Swift-BIC DABADKKK

BUSINESS REGISTRATION

CVR-nr. DK25472020

CITES EKSPORT TILLADELSE

Katalognumre markeret med (©) er effekter, der omfattes af Washingtonkonventionen. Effekter udført eller forarbejdet fra 1947 og frem sælges med CITES-certifikat gyldigt inden for EU. Effekter forarbejdet før 1947 kræver ikke CITES-certifikat før salg inden for EU. For udførsel til lande uden for EU kræves en dansk CITES-eksporttilladelse både for effekter udført før og efter 1947 samt muligvis en tilsvarende importtilladelse i det land, som effekten ønskes indført i.

AFHENTNING

Afhentning af effekter købt på traditionel auktion SKAL SKE senest 2 uger efter sidste auktionsdag.

Uafhentede effekter vil herefter uden yderligere varsel blive sendt til opbevaring for købers regning og risiko.

SALGSRESULTATER

Hammerslagspriser fra de seneste auktioner kan ses på vores hjemmeside: bruun-rasmussen.dk

FOTO

Fotos af alle effekter kan ses på vores hjemmeside: bruun-rasmussen.dk

EURO

Der bydes og faktureres i danske kroner.

Ved omregning fra DKK til Euro er anvendt Nationalbankens officielle valutakurs på tidspunktet for udarbejdelse af kataloget.

Beløbet i Euro er afrundet til et tal, der efter Bruun Rasmussens skøn fremtræder på en præsentabel måde i forhold til beløbet i DKK.

BEVARINGSTILSTAND

Bruun Rasmussen henleder opmærksomheden på, at katalognumrene som udgangspunkt ikke er forsynet med oplysninger om tilstand (jvf. købskonditionernes § 10). Vi henviser imidlertid til vores hjemmeside: www.bruun-rasmussen.dk, hvor der under det enkelte katalognummer ofte er oplysninger om bevaringstilstand, reparationer o. lign. Er disse oplysninger ikke tilstrækkelige kan én af afdelingens sagkyndige kontaktes for yderligere informationer.

BANKFORBINDELSE

Danske Bank · Konto: 41834310970638
IBAN: DK4130004310970638
Swift-BIC DABADKKK

VIRKSOMHEDSREGISTRERING

CVR-nr. DK25472020

DESIGN
MUSEUM
DANMARK

the
danish
chair

Opening 9 December 2016

CONDITIONS OF PURCHASE

§ 1. BIDDING

The buyer shall be the highest bidder at the "hammer price". Any person bidding on behalf of a third party shall be liable in surety for completion of the sale.

At the request of Bruun Rasmussen Kunstauktioner (hereinafter called Bruun Rasmussen), all bidders, whether they wish to make bids in person at the place of auction or commission bids by letter, fax or the homepage direct telephone bids or the homepage, should be able to document their ability to pay and be able to provide proof of identity at any time. Bruun Rasmussen is entitled to refuse to accept a bid if, when requested, adequate security or adequate payment on account has not been rendered.

Bids should be made by the bidder in person at the place of auction or by written commission by letter, fax or the homepage. For online auctions all bids are submitted via the homepage. Telephone bidding is possible within certain conditions made out by Bruun Rasmussen. Bruun Rasmussen is not to be held responsible for any errors that may occur using this service. The auctioneer shall have absolute discretion as to the increment of the bids. The auctioneer will also make decisions in all cases of doubt regarding the bidding.

Credit/debit card information must be registered with Bruun Rasmussen before bids can be submitted.

§ 2. PAYMENT

Purchases made at all Bruun Rasmussen traditional salesroom auctions are subject to a 30% fee (for wines, coins and stamps 25%), which covers 24% buyer's premium plus VAT of the premium.

Purchases made at all Bruun Rasmussen online auctions are subject to a 25% fee, which covers 20% buyer's premium and VAT of the premium.

Certain lots are sold in accordance with specific rules on normal VAT arrangement (hereinafter called normal VAT), so that the purchase price is the hammer price plus an additional 24% (for online auctions, wines, coins and stamps 20%) in buyer's premium and VAT of 25% levied on both the hammer price and the buyer's premium. The lots subject to Full VAT are indicated as such in the catalogue and on the homepage with an asterisk (*).

Danish VAT registered buyers shall provide Bruun Rasmussen with documentation of their SE-/CVR-number (VAT No.) as this has to be quoted on the invoice for goods bought at full VAT.

For some foreign buyers, specific VAT-exemption rules apply (cf. Article 3). VAT-exemption does not apply to private buyers from the EU who are considered as Danish buyers (cf. current Danish legislation on Special VAT Scheme for Sales of Works of Art, Collectors' items and Antiques by Public Auction).

The purchase price falls due for payment when the goods have been knocked down. Payment may be made in cash up to DKK 50,000, by Dankort, Visa-, Master-, Diners Club- or Eurocard.

At traditional auctions payment for purchased items must be made during or immediately after the auction. Under all circumstances payment must be made no later than eight days from the date of the invoice. With online auctions, payment automatically takes place when the items are prepared for dispatch (circa 12 hours after the purchase has been made) using the credit/debit card details submitted by the purchaser. At the same time an invoice and dispatch information will be sent to the purchaser.

Should the purchase price not be paid by the due date, interest at 1.5 % per new month will be charged.

If the purchase price and interest are not paid within eight days after Bruun Rasmussen has sent its demand to the buyer, Bruun Rasmussen shall be entitled to rescind the sale and resell the goods at a Bruun Rasmussen auction or privately, and to demand reimbursement of any related losses from the defaulting

buyer. Any further profit on the sale shall be payable to the person who had deposited the goods for sale by auction.

If the defaulting buyer is entitled to proceeds from a sale of goods by Bruun Rasmussen, Bruun Rasmussen shall be entitled to set off its receivables against its payables to the defaulting buyer.

If the defaulting buyer has deposited other goods for sale, Bruun Rasmussen shall be entitled to sell such goods at a Bruun

Rasmussen auction without being bound by the reserve stipulated by the defaulting buyer. The defaulting buyer shall not be entitled to demand the surrender of goods deposited for sale as long as the debt payable to Bruun Rasmussen has not been discharged, regardless of whether the value of such goods may be deemed to exceed the debt payable.

Bruun Rasmussen shall be entitled to refuse a bid made by a buyer who is in default in respect to his payment obligations to Bruun Rasmussen, as well as a bid made by a third party on behalf of such a defaulting buyer. Bruun Rasmussen shall further be entitled to demand a deposit as a condition of accepting any future bids from such a purchaser.

§ 3. MONEY-BACK GUARANTEE

A. Purchases made on all traditional salesroom auctions are unconditional and can not be cancelled regardless of the type of bid such as absentee web bid, live-bidding or otherwise.

B. Online purchase of items by private individuals is subject to Danish consumer law, which extends 14 days of money-back guarantee. The purchaser is liable for any costs related to the transport of returned items.

Should a purchaser seek to avail himself or herself of the money-back guarantee, Bruun Rasmussen will refund the payment on receiving the returned items. Please note that the date on which accounts are debited is subject to the policy of the purchaser's bank/credit card company.

§ 4. EXEMPTION FROM VAT

Foreign buyers who meet the following conditions pay the applicable auction fees, cf. above, but are not charged Danish VAT. However, the Danish VAT must be deposited at Bruun Rasmussen until documentation has been provided to show that the goods have been exported as required by law.

A. Buyers who are VAT-registered in another EU country are exempt from paying Danish VAT when it can be documented that the item purchased has been transported to the address declared by the buyer to Bruun Rasmussen and specified on the invoice. In such cases, VAT must be settled in accordance with the rules in force in the country where the company is VAT-registered. It is advisable to check with the relevant local authorities.

B. Buyers domiciled outside the EU may be exempt from Danish VAT when it can be documented that the purchase has been transported out of the EU. As far as possible, Bruun Rasmussen issues the necessary export documents to be presented to the customs authorities, and reserves the right to charge a fee for doing so.

If the goods are being exported by a freight forwarder authorised by Bruun Rasmussen, the VAT need not be deposited. See the list of approved freight forwarders

§ 5. PAYMENT OF TAXES AND DUTIES

A. VAT-registered businesses in other EU Member States may opt out of exercising the option of VAT exemption and instead pay Danish VAT on second-hand goods/full VAT. Bruun Rasmussen must be informed of this before 10 am on the day after the purchase.

B. VAT-registered businesses in Denmark may choose to pay full VAT, cf. above. Bruun Rasmussen must be informed of this before 10 am on the day after the purchase.

§ 6. COLLECTION OF PURCHASES

The purchase price must be paid in full before the purchased lot can be passed over to the buyer. From the time of the lot being knocked down to the buyer, until its collection, the purchased lot will be held at the buyer's own expense and risk.

A storage fee will be charged for lots which have not been collected according to agreement. Lots which have been paid for but not collected will be stored at buyers expense. Lots not collected within 1 year will be resold at auction or privately at the buyer's expense.

§ 7. DISPATCH

Should Bruun Rasmussen undertake the packaging and forwarding of purchased goods, this shall be done at the buyer's own expense and risk. Bruun Rasmussen shall thus not be held liable neither for any damage caused to purchased goods during dispatch nor for any missing consignments.

§ 8. DROIT DE SUITE

In accordance with Danish copyright law, an additional royalty fee is to be paid for the purchase of works by contemporary Danish artist and some international artists who are either still alive or who have been dead for less than 70 years. The additional royalty fee will be collected by Bruun Rasmussen on behalf of Copydan, which is a Danish-based joint collecting society. Such works are marked with (CD) for Copydan next to the lot number.

The Copydan royalty fee is added to the auction price including the buyer's premium when the total exceeds €300.

Copydan royalty fees:

- 5% of the auction price and buyer's premium (excluding VAT) totalling up to €50,000.
- 3% of the auction price and buyer's premium (excluding VAT) of totals between €50,000 and €200,000.
- 1% of the auction price and buyer's premium (excluding VAT) of totals between €200,000 and €350,000.
- 0.5% of the auction price and buyer's premium (excluding VAT) of totals between €350,000 and €500,000.
- 0.25% of the auction price and buyer's premium (excluding VAT) of totals above €500,000.

Copydan royalties must not exceed €12,500 for an individual artwork.

The euro exchange rate has been set by Copydan for 2016 at DKK 746,02 per €100.

§ 9. EXPORT LICENCE

Applications for an export licence must be made to the Danish Cultural Assets Committee when required in accordance with current Danish legislation on the protection and preservation of cultural assets in Denmark. Where such a licence has not been obtained, the foreign buyer will be informed thereof immediately after the lot has been knocked down to the buyer. Another application will subsequently be sent to the Danish Cultural Assets Committee by Bruun Rasmussen on behalf of the buyer, now that the price is known. Should an export licence not be granted, the Danish Cultural Assets Committee would be obliged to acquire the purchased lot at the purchase price, and the buyer would thus not be bound to the purchase.

§ 10. DESCRIPTION OF LOTS

All lots are sold in the condition in which they are found when knocked down and as described in the catalogue and on the homepage with subsequently published changes and modifications. Description is done according to the best of Bruun Rasmussen's knowledge and on the cataloguing principles stated.

The lots auctioned are often of some age or of a kind which makes it possible that they may contain defects, deficiencies, or may have been subject to restoration or damage not necessarily stated in the catalogue and on the homepage. Pictures are for identification only and cannot be used for an evaluation of the condition of the goods.

Any person who wishes to bid at an auction should therefore satisfy himself of the condition of the lots for which he intends to bid by personal inspection at the preview held prior to the auction. The description is an indication of the prevailing opinion of scholars and expert at the time of the sale. If any doubts should

arise after the purchase regarding the genuineness of the purchased lot or its conformance with the description, Bruun Rasmussen should immediately be informed thereof.

Should the purchased lot be proved to be a forgery, or if the description contains material errors which lead to a considerably higher hammer price than that which a correct description would presumably result in, the buyer shall be entitled to cancel the purchase, after which the buyer shall be reimbursed for the total purchase price paid plus buyer's premium and VAT, when applicable.

For material errors in the description in respect to measurements or weight, compensation shall only be paid on a percentage basis in proportion to the difference.

The right of cancellation of a purchase in pursuance of the present conditions can only be exercised by the party who has bought the lot in question at Bruun Rasmussen and shall be subject to the presentation of a claim for cancellation in writing to Bruun Rasmussen within 2 years of the purchase date and to the purchased lot being returned to Bruun Rasmussen in the same condition in any and all respects which the purchased lot was in at the time of the lot being knocked down to the buyer.

In the event of cancellation the buyer shall not be entitled to claim payment of interest on the purchase price nor shall the buyer be entitled to claim compensation for any other expenses or loss incurred, including any possible loss of profit in connection with reselling.

It shall not be possible to state cancellation of a purchase in pursuance of the above provisions if:

- a the description on the day the lot was knocked down to the buyer was in accordance with the then generally accepted opinion of scholars and experts;
- b the only way of establishing whether the lot was a forgery at the time of the sale was the implementation of scientific processes, the validity of which was only acknowledged after the time of the sale, or which would have required a disproportionate amount of cost, or which would have been impossible to carry out without damaging the lot in question.

In addition to the time-limits stated above, all purchases are subject to the Statute of Limitations stipulated by Danish law by which Bruun Rasmussen is under no circumstance liable for purchases after 5 years from the date of purchase.

Bruun Rasmussen Auctioneers

Jesper Bruun Rasmussen, auctioneer

Jørgen Byriël, officially appointed external supervisor

COMMISSION

Bruun Rasmussen undertakes to execute commission bids for bidders who are unable to be present at the auction. It is a prerequisite that Bruun Rasmussen receives the commissions by letter, fax or telephone 24 hours before the start of the auction for the bidders' credit to be checked, if necessary. Bids by the homepage are to be received a minimum of 3 hours before the start of the auction. Bruun Rasmussen is not to be held responsible for any errors that may occur using this service.

CONDITION REPORTS

Bruun Rasmussen undertakes to provide further information about the state and condition of the lots if possible. This is regarded as a service for customers who are unable to make a personal inspection of the lots at the preview. Bruun Rasmussen stresses that the information given cannot be used as the basis for complaints; complaints can only be based on the description.

EXEMPTION FROM VAT

Buyers shall, according to § 2, pay full VAT on lots marked with an asterisk (*).

No Danish VAT is to be paid when VAT registered companies from other EU countries buy at Bruun Rasmussen and resell to private buyers. The private buyer then only has to pay VAT according to the rules in force in the country where the foreign company is VAT registered. For further information please consult your local authorities.

The above is an English translation of the Danish version of the Conditions of Purchase. In case of dispute, only the Danish version of the present Conditions of Purchase of Bruun Rasmussen is valid.

§ 1. BUDGIVNING

Køber er den byder, der får hammerslag. Den, der byder for andre, hæfter som selvskyldnerkautionist for berigtigelsen af købet.

På opfordring fra Bruun Rasmussen Kunstauktioner (herefter benævnt Bruun Rasmussen), skal alle bydere, hvadenten de ønsker at afgive et bud ved personligt fremmøde på auktionsstedet eller afgive en kommission pr. brev, fax eller hjemmeside eller byde direkte pr. telefon eller hjemmeside, kunne dokumentere deres betalingsdygtighed samt til enhver tid identificere sig. Bruun Rasmussen er altid berettiget til at nægte at acceptere et bud, hvis på forlangende ikke tilstrækkelig sikkerhed er stillet eller en passende à conto betaling har fundet sted.

Bud afgives af byderen ved personligt fremmøde på auktionsstedet eller ved skriftlig kommission enten pr. brev, fax eller hjemmeside. På online-auktioner afgives bud direkte fra hjemmesiden. Afgivelse af bud pr. telefon er muligt under visse forudsætninger, der afgøres af Bruun Rasmussen. Bruun Rasmussen påtager sig intet ansvar for eventuelle fejl eller fejltagelser, der måtte opstå ved brug af denne service. Auktionarius bestemmer overbuddets størrelse og træffer ligeledes afgørelse i alle tvivlstilfælde om budgivningen.

For at kunne byde på Bruun Rasmussens auktioner kræves forudgående registrering af byders betalingskort-/kreditkortoplysninger.

§ 2. BETALING

Ved køb på alle traditionelle auktioner tillægges hammerslagsprisen 30% (for vin, mønter og frimærker 25%), der dækker salær på 24% samt moms af salæret.

Ved køb på alle net-auktioner tillægges hammerslagsprisen 25%, der dækker salær på 20% samt moms af salæret.

Visse numre handles efter særlige regler til fuldmoms, så udover auktionsomkostninger på 24% (for net-auktioner, vin, mønter og frimærker dog 20%), beregnes moms på 25% af både hammerslag og auktionsomkostninger. Disse numre er mærket med en stjerne (*).

Danske momsregistrerede købere skal overfor Bruun Rasmussen oplyse deres SE-/CVR-nr. (moms-nr.), da dette skal anføres på de fakturaer, hvor varen købes i fuld moms.

For visse udenlandske købere gælder der særlige regler for afgiftsfritagelse jvf. § 4. Afgiftsfritagelse omfatter ikke EU private købere, som ligestilles med danske købere jvf. gældende dansk lovgivning om handel med brugte varer, kunstgenstande, samlereobjekter og antikviteter.

Købesummen forfalder til betaling ved tilslaget. Der kan betales kontant op til DKK 50.000 eller med Dankort, Visa-, Master-, Diners Club- eller Eurocard.

På de traditionelle auktioner i Bredgade skal betaling af købte emner finde sted under eller umiddelbart efter auktionen og under alle omstændigheder senest 8 dage efter fakturadatoen. På net-auktionerne trækkes købesummen automatisk på det af kunden oplyste betalings-/kreditkort i forbindelse med, at det købte emne udtages til transport (ca. 12 timer efter dagens salg). Samtidig tilsendes køber faktura og transportoplysninger.

Betales købesummen ikke rettidigt, skal der svares rente heraf med 1,5% pr. påbegyndt måned.

Betales købesum og renter ikke inden 8 dage efter at Bruun Rasmussen har afsendt påkrav herom til køber, er Bruun Rasmussen berettiget til at annullere købet og bortsælge det købte på ny auktion hos Bruun Rasmussen eller underhånden og afkræve køber ethvert herved opstået tab. Et eventuelt overskud tilfalder den, der har indleveret det købte til auktion.

Har den misligholdende køber tilgodehavender fra salg af effekter hos Bruun Rasmussen, er Bruun Rasmussen berettiget til at berigtige ethvert tilgodehavende hos køber ved modregning.

Har den misligholdende køber indleveret andre effekter til salg, er Bruun Rasmussen berettiget til at bortsælge sådanne effekter på auktion hos Bruun Rasmussen uden at være bundet af en af den misligholdende køber fastsat mindstepris. Den misligholdende køber er ikke berettiget til at kræve udlevering af effekter indleveret til salg, så længe forfalden gæld til Bruun Rasmussen ikke er betalt, uanset om værdien af sådanne effekter må anses at overstige forfalden gæld.

Bruun Rasmussen er berettiget til at afvise bud afgivet af en køber, der er i misligholdelse med sine betalingsforpligtelser over for Bruun Rasmussen eller et bud afgivet af en anden på den pågældendes vegne, ligesom Bruun Rasmussen er berettiget til at kræve et depositum som betingelse for accept af fremtidige bud.

§ 3. FORTRYDELSESRET

A. Ved køb på alle traditionelle auktioner er der ikke fortrydelsesret. Køb kan derfor ikke fortrydes, uanset om budafgivning er via web-kommissionsbud, live-bidding eller på anden vis.

B. For privatkøb af emner på en online-auktion gælder loven om fjernsalg, herunder også 14 dages fortrydelsesret. Eventuelle omkostninger forbundet med transport af købte emner retur fra køber, betales af køber selv.

Såfremt køber benytter sig af sin fortrydelsesret, refunderer Bruun Rasmussen betalingen umiddelbart efter, at varen er sendt retur og modtaget af Bruun Rasmussen. Bruun Rasmussen gør opmærksom på, at det herefter er op til bankerne/kreditkortselskaberne, hvornår refusionen indgår på købers konto.

§ 4. AFGIFTSFRITAGELSE

Udenlandske købere, der opfylder en af nedenstående betingelser, betaler de gældende salærssatser jf. ovenstående, men bliver ikke belastet af dansk moms. Den danske moms deponeres dog hos Bruun Rasmussen, indtil eksporten er gennemført på dokumenteret lovpligtig vis.

A. Købere, som er momsregistreret i et andet EU-land, kan fritages for at betale dansk moms, når det kan dokumenteres, at købet er transporteret til den adresse, som køber har angivet over for Bruun Rasmussen og som er anført på fakturaen. I sådanne tilfælde skal der afregnes moms i henhold til de gældende regler i det land, hvor virksomheden er momsregistreret. Det tilrådes at søge oplysning hos de lokale myndigheder.

B. Købere med bopæl uden for EU kan fritages for dansk moms, når det kan dokumenteres, at købet er transporteret ud af EU. Bruun Rasmussen udsteder så vidt muligt de fornødne eksportpapirer, som skal fremvises ved toldmyndighederne, og forbeholder sig ret til at opkræve et gebyr herfor.

Foretages eksporten af en af Bruun Rasmussen godkendt speditør skal momsen ikke deponeres. Se listen over godkendte speditører

§ 5. AFGIFTSBETALING

A. Momsregistrerede virksomheder i andre EU-lande kan undlade at gøre brug af muligheden for momsfritagelse og i stedet betale dansk brugtmoms/fuldmoms. Dette skal meddeles Bruun Rasmussen inden kl. 10 dagen efter købet.

B. Momsregistrerede virksomheder i Danmark kan vælge at betale fuldmoms jf. ovenstående. Dette skal meddeles Bruun Rasmussen inden kl. 10 dagen efter købet.

§ 6. UDLEVERING

Købesummen skal være betalt, inden det købte kan udleveres til køberen. Det købte henligger fra hammerslaget for købers regning og risiko. For varer, der ikke afhentes ifølge aftale efter hammerslaget, vil blive kørt på fjernlager på købers regning og risiko. Købte varer, der er betalt, men ikke afhentet, vil efter 1 år blive videresolgt for købers regning ved auktion eller underhånden.

§ 7. FORSENDELSE

Såfremt Bruun Rasmussen påtager sig at emballere og fremsende købte varer, sker dette på købers regning og risiko. Bruun Rasmussen kan således ikke drages til ansvar for skader forvoldt på købte varer under forsendelse eller for forsvundne forsendelser.

§ 8. KUNSTNERAFGIFT TIL COPY-DAN ^{CD}

Ifølge gældende dansk lovgivning om ophavsret skal der opkræves følgeretsvederlag for værker af nyere danske og visse udenlandske kunstnere, som enten er nulevende eller ikke har været døde i mere end 70 år. Følgeretsvederlaget opkræves af Bruun Rasmussen på vegne af kunstneres organisation Copydan. Disse værker er mærket (CD) for Copydan ud for katalognummeret.

Den såkaldte Copydan-afgift tillægges hammerslagsprisen inkl. salær, når beløbet overstiger €300.

Copydan-afgiften er:

- 5% af den del af hammerslagsprisen og salæret (ekskl. moms), der udgør indtil €50.000.
- 3% af den del af hammerslagsprisen og salæret (ekskl. moms), der ligger mellem €50.000 og €200.000.
- 1% af den del af hammerslagsprisen og salæret (ekskl. moms), der ligger mellem €200.000 og €350.000.
- 0,5% af den del af hammerslagsprisen (ekskl. moms), der ligger mellem €350.000 og €500.000.
- 0,25% af den del af hammerslagsprisen (ekskl. moms), der ligger over €500.000.

Copydan-afgiften kan ikke overstige €12.500 for det enkelte kunstværk.

Euro-kursen er fastsat af Copydan i 2016 til kurs 746,02 pr. €100.

§ 9. EKSPORTTILLADELSE

Kulturværtdiudvalget er blevet ansøgt om eksporttilladelse, hvor dette kræves iflg. gældende dansk lovgivning om sikring af kulturværdier i Danmark. Foreligger en sådan ikke, vil dette blive meddelt den udenlandske køber umiddelbart efter hammerslaget. Derefter vil Bruun Rasmussen igen ansøge Kulturværtdiudvalget på købers vegne, nu hvor prisen kendes. Gives eksporttilladelse ikke, er Kulturværtdiudvalget forpligtet til at overtage det købte til den opnåede pris, hvilket betyder at købet bliver hævet for køber.

§ 10. BESKRIVELSE AF EMNER

Alt sælges i den stand, hvori det ved hammerslaget er at forefinde og som beskrevet i katalog eller hjemmeside med senere offentliggjorte ændringer og modifikationer.

Beskrivelsen er foretaget efter bedste overbevisning og under anvendelse af de anførte katalogiseringsprincipper.

De solgte effekter er ofte af en alder eller af en art, der bevirker, at de kan være behæftet med fejl, mangler, restaurering eller beskadigelser, der ikke nødvendigvis angives i katalog eller på hjemmesiden. Afbildninger i katalog eller på hjemmesiden er blot til identifikation og kan ikke anvendes til vurdering af effekternes stand.

Enhver der ønsker at byde på auktion, bør derfor ved selvsyn på de før auktionen afholdte eftersyn forvise sig om de ønskede effekters stand.

Beskrivelsen er udtryk for den på salgstidspunktet blandt lærde og eksperter herskende opfattelse.

Skulle der efter købet opstå tvivl om det købtes ægthed eller dets overensstemmelse med beskrivelsen, skal dette straks meddeles til Bruun Rasmussen.

Såfremt det må erkendes, at det købte er en forfalskning, eller såfremt beskrivelsen har været behæftet med væsentlige fejl, der har medført en væsentlig højere hammerslagspris, end en korrekt beskrivelse må antages at ville have resulteret i, er køber beret-

tiget til at annullere købet, hvorefter den samlede erlagte købesum tillagt auktionsomkostninger og evt. moms, vil blive refunderet køber.

Væsentlige fejl i beskrivelsen relateret til mål eller vægt erstattes kun procentuelt i forhold til differencen.

Retten til under de her anførte betingelser at annullere et køb kan kun udøves af den, der købte den pågældende effekt hos Bruun Rasmussen og er betinget af, at krav om annullering fremsættes skriftligt over for Bruun Rasmussen inden 2 år efter købsdagen, og af at det købte inden samme frist returneres til Bruun Rasmussen i den samme stand i enhver henseende, som det købte var i på hammerslagstidspunktet.

Køber kan i tilfælde af annullering ikke gøre krav på betaling af renter af købesummen og er ej heller berettiget til at kræve anden udgift eller tab, herunder eventuel mistet videresalgfortjeneste, dækket.

Et køb kan ikke kræves annulleret efter ovenstående bestemmelser, såfremt:

- a. beskrivelsen i katalog eller på hjemmesiden på hammerslagsdagen var i overensstemmelse med den på dette tidspunkt gældende opfattelse blandt lærde og eksperter.
- b. den eneste måde til på salgstidspunktet at få fastslået et falskneri var iværksættelsen af videnskabelige processer, hvis gyldighed først blev anerkendt efter salgstidspunktet, eller som ville have været uforholdsmæssigt omkostningskrævende eller uigennemførlige uden beskadigelse af den pågældende effekt.

I tillæg til ovenstående frist gælder de almindelige forældelsesregler i forældelsesloven, efter hvilke køber ikke under nogen omstændigheder kan gøre noget krav gældende over for Bruun Rasmussen, når der er forløbet mere end 5 år fra købsdagen.

Bruun Rasmussen Kunstauktioner
Jesper Bruun Rasmussen, Auktionsholder
Jørgen Byriel, Auktionsleder

KOMMISSIONER

Bruun Rasmussen påtager sig at byde i kommission for bydere, der ikke kan være til stede ved auktionen. Det er en forudsætning, at kommissioner indleveret pr. brev eller fax er Bruun Rasmussen i hænde i 24 timer før auktionens start, så om nødvendigt bydernes kreditværdighed kan undersøges. Via hjemmesiden er denne deadline 3 timer. Bruun Rasmussen påtager sig intet ansvar for eventuelle fejltagelser, der måtte opstå ved brug af denne service

KONDITIONSRAPPORTER

Bruun Rasmussen påtager sig, hvis det er muligt, at orientere nærmere om numrenes kondition og tilstand. Dette er ment som en service for kunder, der ikke selv har mulighed for ved selvsyn at undersøge numrene på eftersynet. Det understreges, at de givne oplysninger ikke kan gøres til genstand for reklamationer; her henvises til beskrivelsen.

FRITAGELSE FOR DANSK FULDMOMS

Købere skal ifølge § 2 betale fuldmoms af de varer der i katalog eller på hjemmesiden er markeret med stjerner (*).

Når virksomheder, der er momsregistrerede i andre EU-lande, køber hos Bruun Rasmussen og videresælger til private, skal der ikke betales dansk moms, men moms i henhold til de regler der gælder, hvor den udenlandske virksomhed er momsregistreret. Det tilrådes at søge oplysning hos de lokale myndigheder.

COMMISSION BIDS

KOMMISSIONSBUD

It is possible to leave commission bids if you can not be present at the auction yourself. This service is free of charge.

When leaving a commission bid, you are instructing our customer service to bid up to a specified amount on your behalf.

The situation can occur that another buyer has already bid the same as you were prepared to. Are you then willing to bid further? If not the lot will be sold to another buyer.

If you do not wish to exceed your bid then write "Max", for maximum, next to the amount. You can also allow us to raise your bid by approx. 15% or approx. 25%.

The hammer price may be higher or lower than the estimated price, so it is possible to buy below the estimate. Bruun Rasmussen will always buy at the lowest price possible, as if you yourself had been present at the auction.

All commission bids are strictly confidential.

Commission bids must be submitted no later than **24 hours** prior to the start of the auction.

HOW TO MAKE A COMMISSION BID:

Complete the commission form with all pertinent information.

Indicate the lot number.

Indicate the amount you are prepared to bid.

Should this amount be the absolute maximum, please write "Max" in the appropriate column.

You can also allow us to bid by up to approx. 15% or approx. 25% more by indicating so.

Sign the commission form and make sure that Bruun Rasmussen receives it **24 hours** prior to the start of the auction.

If the information should be insufficient, Bruun Rasmussen can abstain from bidding. Bruun Rasmussen can not be held responsible for error in bidding or failure to execute bids.

INTERNET:

Commission bids can be submitted via website bruun-rasmussen.dk directly from the page with the item you want to submit a bid for.

Deadline for submissions of bids via the website is **3 hours** prior to the start of the auction.

Submitted bids are shown under "Your bids" when you are logged in. Please contact technical support on +45 8818 1114 for questions about the registration and submission of bids on the website.

For additional information, please consult "Conditions of Purchase" §1.

TELEPHONE BIDDING:

Should you wish to bid at auction by telephone, please inform Bruun Rasmussen of your name and telephone number, as well as which catalogue numbers you are interested in, no later than **3 hours** prior to the start of the auction. You will then be contacted shortly before the relevant lot comes under the hammer, thereby allowing you to participate without being in the auction room yourself.

For additional information, please consult "Conditions of Purchase" §1.

Det er muligt at afgive kommissionsbud, hvis De ikke selv kan være til stede på auktionens dag. Denne service er gratis.

Når De afgiver en kommission, beder De vores kundeservice på Deres vegne byde op til et af Dem bestemt beløb i hammerslag.

Der kan opstå den situation, at en anden køber allerede har budt det beløb, som De ønsker at afgive. Er De da villig til at gå et bud højere eller er De indforstået med at nummeret sælges til anden side?

Ønsker De ikke at byde højere så skriv "Max" ud for beløbet. Er De i tvivl om hvor højt De vil byde, kan De hæve budet med op til ca. 15% eller ca. 25%.

Salgsprisen kan blive højere eller lavere end vurderingen, så der er også mulighed for at købe til under den angivne vurdering. Vor kundeservice køber altid så billigt som muligt til Dem, som havde De selv været tilstede på auktionen.

Alle kommissioner behandles strengt fortroligt.

Kommissionsbud skal være Bruun Rasmussen i hænde senest **24 timer** før auktionens start.

SÅDAN BYDER DE:

Udfyld blanketten kommissionsbud med alle oplysninger.

Angiv katalognummer.

Angiv beløbet De ønsker at byde.

Er dette Deres absolutte maximum bedes De anføre "Max" i kolonnen.

De kan også forhøje Deres bud med henholdsvis ca. 15% eller ca. 25%, ved at indikere dette i kolonnen.

De bedes underskrive kommissionsblanketten og sikre Dem, at Bruun Rasmussen modtager den senest **24 timer** før auktionens start.

Hvis Deres oplysninger ikke er tilstrækkelige, kan Bruun Rasmussen undlade at byde for Dem, ligesom Bruun Rasmussen ikke kan gøres ansvarlig for fejl ved budgivning.

INTERNET:

Kommissionsbud kan afgives på hjemmesiden bruun-rasmussen.dk direkte fra siden med den effekt, De ønsker at byde på.

Seneste afgivelse af bud via hjemmesiden er **3 timer** før auktionens start.

Afgivne bud kan ses på hjemmesiden under "Deres bud", når de er logget ind. Kontakt teknisk support på 8818 1114 for spørgsmål om registrering og budgivning via internettet.

For yderligere information, se "Købskonditioner", §1.

TELEFONBUD:

Såfremt De ønsker at byde pr. telefon, bedes De oplyse Bruun Rasmussen Deres navn og telefonnummer samt hvilke katalognumre, De ønsker at byde på, senest **3 timer** før auktionens start. De vil så blive ringet op kort før, den aktuelle vare kommer under hammeren, og De kan på denne måde deltage i auktionen uden selv at være til stede.

For yderligere information, se "Købskonditioner" på bruun-rasmussen.dk under "Guide".

COMMISSION BIDS

KOMMISSIONSBUD

BREDGADE

Skal være Bruun Rasmussen i hænde senest **24 timer** før auktionens start.
Must be submitted no later than 24 hours prior to the start of the auction.

AUKTION NR AUCTION NO: **869**

Navn Name: *

Adresse Address: *

Postnr./by City: *

Land Country: * Fax:

Tel: *

e-mail: CVR-nr. VAT No.:

Bank: Konto nr. Acct. No.:

Adresse Address:

Postnr./By City: Land Country:

Tel: Kontaktperson Contact:

Obligatoriske felter er mærket med en stjerne * *Mandatory fields are marked with an asterix **

Undertegnede giver hermed fuldmagt til Bruun Rasmussen Kunstauktioner A/S om på mine vegne at købe nedennævnte katalognumre så fordelagtigt som muligt, inden for det af mig anførte beløb, i hammerslag.
I hereby request that Bruun Rasmussen bid on my behalf on the following lots up at the prices indicated below.

Undertegnede har udfyldt ovennævnte med de ønskede oplysninger, samt har accepteret købskonditionerne.
The undersigned has supplied the required information and agrees to be bound by the conditions of purchase.

Signatur: * B.R. kunde-nr. Client No.:

Jeg ønsker at modtage salgsresultater på de emner jeg har budt på via email dagligt efter auktion
I wish to receive sales results on the items I have been bidding on via e-mail every day after the auction

på e-mail adressen *on this e-mail address:*

Katalog nr. Lot. No.	Beskrivelse Description	Bud kr. Bid DKK	Max	+15%	+25%

BRUUN RASMUSSEN KUNSTAUKTIONER A/S

Bredgade 33 · DK-1260 København K · Tel +45 8818 1111 · Fax +45 8818 1112 · bids@bruun-rasmussen.dk · bruun-rasmussen.dk

Fortsættes næste side *Please turn over*



MOMS OG KUNSTNERAFGIFT

BUYER'S STANDARD PREMIUM

30% AUCTIONEERS' MARGIN SCHEME

As of 1 January 1995 new EC regulations came into effect regarding the sale of secondhand goods, works of art, collector's items and antiques; these items may now be traded under the Auctioneers' Margin Scheme.

Under the Auctioneers' Margin Scheme the premium only is subject to VAT, i.e. the hammer price is exempted from VAT. The buyer's premium of 25% will thus henceforth include non-refundable VAT.

FULL VAT *

will be charged on goods that cannot be traded under the Auctioneers' Margin Scheme. These lots are marked with an asterisk *. The buyer pays the auction premium of 24% plus 25% VAT on the hammer price as well as the buyer's premium.

BUYER'S REDUCED PREMIUM 24%

is paid by buyers fulfilling the following terms/conditions:

1. Danish VAT registered buyers may choose to pay the 24% buyer's premium + 25% VAT on the total amount (Full VAT). The buyer may have the total VAT refunded and thus pays 24% in buyer's premium only.
2. VAT registered buyers in other EU countries may avoid Danish VAT by using their VAT registration number and thereby pay a buyer's premium of 24% only.
3. Residents of countries outside the EU meeting the Danish customs authorities' requirements regarding the export of goods pay the buyer's premium of 24% only (see Conditions of Purchase §3, Exemption from VAT).

ARTISTS' ROYALTIES PAYABLE TO COPY-DAN ^{CD}

Pursuant to current Danish legislation on copyright an artists' royalty of 5% of the total price exclusive of VAT (i.e. hammer price plus buyer's premium 24%) shall be collected on works of modern art by all Danish and most foreign artists. These works are marked ^{CD} for Copy-Dan next to the lot number.

For further information please refer to the Conditions of Purchase.

STANDARD AUKTIONSOMKOSTNINGER

30% - BRUGT MOMS

1. januar 1995 trådte nye love i kraft i EU vedrørende moms ved handel på auktion med brugte varer, kunstgenstande, samlerobjekter og antikviteter, der nu kan handles til brugt moms.

Efter de nye regler er det kun auktionsomkostninger, der skal tillægges moms, og ikke som tidligere varens fulde pris. I auktionsomkostninger er indregnet ikke fradragsberettiget moms.

FULD MOMS *

anvendes for visse varer som ikke kan handles i brugt moms. Disse er mærket med en stjerne *. Købere skal betale 24% i auktionsomkostninger, hvortil lægges 25% moms af hammerslaget og auktionsomkostningerne.

REDUCEREDE AUKTIONSOMKOSTNINGER 24%

betales af købere der opfylder følgende betingelser:

1. Danske momsregistrerede købere kan vælge at betale 24% i auktionsomkostninger + 25% moms af hele (fuldmoms). Momsbeløbet kan køber modregne, og betaler derved 24% i auktionsomkostninger.
2. Momsregistrerede købere i andre EU-lande kan, ved at anvende deres EU-momsnr., undgå den danske moms og derved betale 24% i auktionsomkostninger.
3. Alle købere med bopæl i et land uden for EU, der opfylder de danske toldmyndigheders krav i forbindelse med eksport, betaler derved 24% i auktionsomkostninger (se købskonditioner, §4, Afgiftsfrigørelse).

KUNSTNERAFGIFT TIL COPY-DAN ^{CD}

Ifølge gældende dansk lovgivning om ophavsret, skal der opkræves 5% i kunstnerafgift af hammerslagsprisen med tillæg af auktionsomkostninger på 24% excl. moms på værker af alle nyere danske og de fleste udenlandske kunstnere. Disse værker er mærket ^{CD} for Copy-Dan ud for katalognummeret.

For nærmere information henvises til købskonditionerne.



M O D E R N