

NORDIC DESIGN

International auction 866



BRUUN RASMUSSEN

AUCTIONEERS OF FINE ART

# N O R D I C   D E S I G N

International auction 866



## A U C T I O N

28 - 29 September 2016

## P R E V I E W

Thursday	15 September	3 pm - 6 pm
Friday	16 September	11 am - 5 pm
Saturday	17 September	11 am - 4 pm
Sunday	18 September	11 am - 4 pm
Monday	19 September	11 am - 5 pm

or by appointment

*NB: "Copenhagen Half Marathon" and "car-free Sunday" will take place on Sunday 18 September. Certain parts of Copenhagen will therefore be closed off.*



**BRUUN RASMUSSEN**

**AUCTIONEERS OF FINE ART**

Bredgade 33 · DK-1260 Copenhagen K · Tel +45 8818 1111  
info@bruun-rasmussen.dk · bruun-rasmussen.com





# DAYS OF SALE

---

## FINE ART + ANTIQUES

<b>Tuesday</b>	<b>20 September</b>		
	4 pm	Paintings and drawings	1 - 171
		Books and letters	172 - 188

---

## FINE ART + ANTIQUES

<b>Wednesday</b>	<b>21 September</b>		
	2 pm	Furniture, clocks and bronzes	189 - 325
		Silver	326 - 353
		Ceramics, glass and antiquities	354 - 381
		Oriental carpets	382 - 436
<b>Thursday</b>	<b>22 September</b>		
	4 pm	Jewellery and handbags	437 - 648
		Wristwatches	649 - 690

---

## MODERN ART

<b>Tuesday</b>	<b>27 September</b>		
	4 pm	Modern paintings and sculptures	691 - 857
<b>Wednesday</b>	<b>28 September</b>		
	2 pm	Modern paintings and sculptures	858 - 957
		Prints	958 - 982
		Photographs	983 - 1011

---

## NORDIC DESIGN

<b>Wednesday</b>	<b>28 September</b>		
	4 pm	Silver	1012 - 1048
		Ceramics	1049 - 1103
<b>Thursday</b>	<b>29 September</b>		
	4 pm	Furniture, lamps and carpets	1104 - 1280

---

## DEADLINE FOR CLAIMING ITEMS: WEDNESDAY 12 OCTOBER

*Items bought at Auction 866 must be paid no later than eight days from the date of the invoice and claimed on Bredgade 33 by Wednesday 12 October at the latest. Otherwise, they will be moved to Bruun Rasmussen's storage facility at Baltikavej 10 in Copenhagen at the buyer's expense and risk. This transportation will cost DKK 100 per item VAT included, and storage will cost DKK 100 per item per week VAT included.*

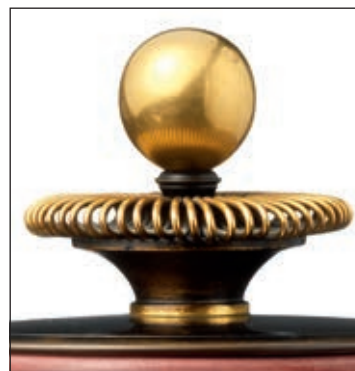




Lot 1160

# NORDISK DESIGN

International auktion 866



## AUKTION

28. - 29. september 2016

## EFTERSYN

Torsdag	15. september	kl. 15 - 18
Fredag	16. september	kl. 11 - 17
Lørdag	17. september	kl. 11 - 16
Søndag	18. september	kl. 11 - 16
Mandag	19. september	kl. 11 - 17

eller efter aftale

*NB: Søndag den 18. september er der "Copenhagen Half Marathon" og "BilfriSøndag", hvorfor visse dele af København er afspærret.*



**BRUUN RASMUSSEN**

**KUNSTAUKTIONER**

Bredgade 33 · 1260 København K · Tel +45 8818 1111  
info@bruun-rasmussen.dk · bruun-rasmussen.dk





Lot 1074

# AUKTIONSKALENDER

---

## FINE ART + ANTIQUES

Tirsdag	20. september		
	kl. 16	Malerier og tegninger Bøger og breve	1 - 171 172 - 188

---

## FINE ART + ANTIQUES

Onsdag	21. september		
	kl. 14	Møbler, ure og bronzer	189 - 325
		Sølv	326 - 353
		Keramik, glas og antikker	354 - 381
Orientaliske tæpper		382 - 436	
Torsdag	22. september		
	kl. 16	Smykker og dametasker Armbåndsure	437 - 648 649 - 690

---

## MODERN ART

Tirsdag	27. september		
	kl. 16	Moderne malerier og skulpturer	691 - 857
Onsdag	28. september		
	kl. 14	Moderne malerier og skulpturer	858 - 957
		Grafik	958 - 982
Fotografier		983 - 1011	

---

## NORDIC DESIGN

Onsdag	28. september		
	kl. 16	Sølv	1012 - 1048
Keramik		1049 - 1103	
Torsdag	29. september		
	kl. 16	Møbler, belysning og tæpper	1104 - 1280

---

SIDSTE FRIST FOR AFHENTNING: ONSDAG DEN 12. OKTOBER

Effekter købt på auktion 866 skal være betalt senest 8 dage efter fakturadatoen og afhentet i Bredgade 33 senest onsdag den 12. oktober. I modsat fald bliver de transporteret til Bruun Rasmussens lager på Baltikavej 10 i Københavns Nordhavn for købers regning og risiko. Transporten koster 100 kr. pr. effekt inkl. moms, og opbevaringen koster 100 kr. pr. effekt pr. påbegyndt uge inkl. moms.





## The Opening of the Preview in Bredgade 33

Thursday 15 September

### Saleroom

- 4 pm Lecture "The experimental art scene and artists in Copenhagen in the 1960s and '70s" by artist Peter Bonnén
- 5 pm Reception on the occasion of our expert in modern art Niels Raben's 60th birthday

Friday 16 September

### First Floor / Saleroom

- 3 pm Gallery talk "An exquisite bureau by David Roentgen" by expert in antiques Anders Fredsted
- 4 pm Lecture "Muses, fashion and Gerda Wegener" by fashion designer Mark Kenly Domino Tan

## Åbningen af eftersynet i Bredgade 33

Torsdag 15. september

### Auktionssalen

- Kl. 16 Foredrag "Den eksperimentelle kunstscene og kunstnerne i København i 60'erne og 70'erne" ved billedkunstner Peter Bonnén
- Kl. 17 Reception i anledning af ekspert i moderne kunst Niels Rabens 60-års fødselsdag

Fredag 16. september

### 1. sal / Auktionssalen

- Kl. 15 Gallery talk "Et udsøgt chatol af David Roentgen" ved ekspert i antikviteter Anders Fredsted
- Kl. 16 Foredrag "Muser, mode og Gerda Wegener" ved modeskaber Mark Kenly Domino Tan





Lot 1176



## Art Expert Niels Raben Turns 60

On Saturday 20 August our Department head, art expert and auctioneer Niels Raben celebrated his 60th birthday. We will mark the occasion on the opening day of the pre-view on Thursday 15 September at 5 pm in Bredgade 33 in Copenhagen. Everyone is welcome!

Niels Raben is with his 30 years in the auction business a highly respected art connoisseur, with a deep well of knowledge about a field that spans artwork from 1900 to today.

His knowledge of the auction world, however, goes all the way back to his childhood, since both his grandfather and mother have worked in the business. They were both colleagues of Arne Bruun Rasmussen at the auction house "Winkel & Magnussen," before Arne opened his own auction house in Bredgade. Niels in this way got an early start in a world full of art and antiques.

### From Adventure Travel to the Auction Business

Niels holds a masters degree from Copenhagen Business School, where he specialized in tourist economy and worked for some years with organizing adventure trips. In 1985 he was hired as a full time employee at Kunsthallen in Copenhagen, which at the time was the leading auction house in Denmark when it came to modern art. Niels quickly became the right hand of auctioneer Jens Thygesen and was, among others, sent to London twice a year to research new trends in the international auction market. Here he built his vast knowledge of the art market and established contacts within the vast network of artists, collectors and traders, which is absolutely invaluable for working in the auction business. He was and still is particularly interested in contemporary art – CoBrA art in particular – and he has since then met many of the greatest artists in Denmark.

### Career Highlights

When Bruun Rasmussen bought Kunsthallen in 2004, Niels was offered a position at the auction house, which he happily accepted. Today, he is head of the department for modern art and mentions the sale in 2005 of Danish actor Ove Sprogøe's private art collection as one of the greatest experiences of his career – not least because Niels had followed the evolution of the collection personally. Another highlight of his career was the sale of Pierre Soulages' masterful work "Peinture" (1963), which was sold for DKK 4.5 million in 2015. Here Niels' passion for France comes to light. Prior to the sale, he visited the newly opened "Musée Soulages" in southern France to get a closer look at one of the abstract art's greatest living figures.

### Hip Gallery Owners and Private Homes

Niels is generally always on the go and is as comfortable with the hip gallery owners in Manhattan as in the private homes of customers, where he finds exquisite works of art for the upcoming auctions. At the office his colleagues describe him as an exemplary team player that shares his vast knowledge and is driven by an infectious, honest joy and enthusiasm over the great works of art that he and his colleagues work with every day. At the same time, he possesses a great sense of tranquillity and integrity in a hectic working environment, where he with a warm, informal approach to most of the day-to-day challenges manages to spread a positive mood. While his funny and quirky ideas bring a smile to most people's faces – both colleagues and customers.



## Moos' Museum Table and a Dancer's Chaise Longue

"... It is becoming a table – so if there is a little money to spare, the table would be much obliged. Sincerely, Peder Moos." In this way the Danish cabinetmaker began his correspondence with his client Doctor Gert Poulsen on 3 April 1968. The so-called "Museum Table" was taking shape, and the uncompromising cabinetmaker needed money to finance the design. The correspondence lasted more than six months, where Moos with great empathy described his affection for the table, which during the process became somewhat of a "religious sanctuary" for him. It was a time-consuming and costly process to make the table, and Moos clearly had concerns about mentioning the price to the client: "This should be read at the very end – preferably when seated or lying down and with the finest medical remedies within reach ... The table costs 6,000 Danish Kroner – if only I knew how this hurts." The beautiful coffee table of Brazilian rosewood and boxwood has now found its way to our autumn auction and is a testament to Moos being a cabinetmaker of divine inspiration. The wooden material's living character and the furniture's joints are as usual highlighted to perfection. The piece was only produced in a few copies and was first presented at the Copenhagen Cabinetmakers' Exhibition in 1943. In 1952 it was part of the colleague Finn Juhl's decoration of an exhibition room at Nordenfjeldske Kunstindustrimuseum in Trondheim. The table comes with the wonderful correspondence between Moos and the customer, and through this writing we also find the probable cause for why the table still appears in such good condition – it should be treated with paper napkins, fine wood wool and cold water (cat. no. 1153).

Speaking of Finn Juhl's exhibition at the Norwegian museum. The prestigious task was to create a Danish interior, but Juhl argued that "... It seemed to me unreasonable not to clearly emphasize the international connections, which the term "design" is today under the influence of..." Therefore, the exhibition room was furnished with a mix of Danish and international design. In addition to the "Museum Table" the auction offers similar examples of the furniture that Juhl selected for the room. These include his own designs such as "The Chieftain Chair," a wall panel and a work table as well as a carpet by the Swedish textile designer Märta Måås-Fjetterström (cat. no. 1165, 1163, 1162 and 1164).

Nanna Ditzel is one of the few Danish female architects from the golden years of Danish design, who succeeded in becoming part of design history. Included in the auction is her chaise longue in rosewood from 1951, which at the time was only produced in this one example. The model was, however, put into production in 2010 by Kitani in Japan. The chaise longue is a classic cabinetmaker piece made in collaboration with her husband Jørgen Ditzel, but the characteristic feminine expression from Nanna Ditzel's hand cannot be denied. Perhaps this was why the graceful solo dancer Margrethe Schanne acquired the piece. She was for many years one of the greatest stars at the Royal Danish Ballet, and during the 1950s she danced into the national consciousness of the Danes to such an extent that she ended up on a postage stamp – depicted in mid-jump (cat. no. 1272).

The autumn design auction will be a busy affair, where we will also present Moos' lamp named "Lidt af hvert" (A bit of everything), which was designed in 1947 and which no one here at the auction house has seen before. We can also present Moos' beautiful stool, which was designed in 1948. Finally, the renowned architect and critic Poul Henningsen, whose private residence in Gentofte will soon be open to the public, is also hard to ignore – especially, when it comes to the "PH Septima 5" lamp with the amber screens (cat. no. 1152, 1151 and 1116).

  
Jesper Bruun Rasmussen







## Moos' museumsbord og danserindens chaiselong

"... det er ved at blive til Bord – saa hvis der er lidt Penge i Kassen, ta'r Bordet imod, med venlig hilsen fra Peder Moos." Sådan indleder den danske møbelsnedker brevvekslingen med sin kunde, lægen Gert Poulsen, den 3. april 1968. Det såkaldte "Museumsbord" var ved at tage form, og den kompromisløse snedker havde brug for penge til at finansiere formgivningen. Korrespondancen strækker sig over et halvt år, hvor Moos med stor indlevelse beretter om sit nære forhold til bordet, der undervejs blev lidt af "en Helligdom" for ham. Det var en tidskrævende og kostbar proces at udføre bordet, og Moos havde tydeligvis sine betænkeligheder ved at nævne prisen over for kunden "Ovenstående bør læses allersidst – siddende eller liggende og med Læge-kunstens bedste Piller inden for Rækkevidde ... Bordet koster 6.000 – bare jeg vidste hvor ondt det gør". Det smukke sofabord af riopalisander og buksbom har nu fundet vej til vores efterårsauktion og vidner om, at Moos var en møbelsnedker af guds nåde. Træets levende karakter og møblets samlinger er på vanlig vis fremhævet til fuldkommenhed. Det blev kun produceret i ganske få eksemplarer og blev første gang præsenteret på Københavns Snedkerlaugs Udstilling i 1943. I 1952 indgik det i kollegaen Finn Juhls indretning af et udstillingsrum på Nordenfjeldske Kunstindustrimuseum i Trondheim. Med bordet følger den fine korrespondance mellem Moos og kunden, og heri findes øjensynligt også forklaringen på, hvorfor bordet stadig fremtræder i så god stand – det skal vedligeholdes med papirservietter, fint træuld og koldt vand (kat.nr. 1153).

Apropos Finn Juhls indretning på det norske museum. Den prestigefulde opgave gik på at skabe et dansk interiør, men som Juhl indvendte " ... Det forekom mig urimeligt ikke tydeligt at pointere den internationale forbindelse, begrebet "design" i dag er under indflydelse af ... ". Derfor blev udstillingsrummet indrettet med et miks af dansk og international formgivning. Ud over "Museumsbordet" byder auktionen på tilsvarende eksemplarer af de genstande, som Juhl udvalgte til rummet, fx hans egne møbler som "Høvdingen", en panelvæg og et arbejdsbord samt et tæppe af den svenske tekstildesigner Märta Måås-Fjetterström (kat.nr. 1165, 1163, 1162 og 1164).

Nanna Ditzel hører til de få danske kvindelige arkitekter fra dansk designs gyldne år, for hvem det lykkedes at indskrive sig i møbelhistorien. Med på auktionen har vi hendes chaiselong af riopalisander fra 1951, som dengang kun blev produceret i dette ene eksemplar. Først i 2010 blev modellen sat i produktion af Kitani i Japan. Chaiselongen er et klassisk snedkermøbel lavet i fællesskab med manden Jørgen Ditzel, men det karakteristiske feminine udtryk fra Nanna Ditzels hånd lader sig ikke fornægte. Måske var det derfor, at den yndefulde solodanserinde Margrethe Schanne erhvervede møblet. Hun var i mange år en af de helt store stjerner på Det Kongelige Teater, og i løbet af 1950'erne dansede hun sig ind i den danske bevidsthed i en sådan grad, at hun blev skildret i fuld firspring på et frimærke (kat.nr. 1272).

Det går ikke stille for sig på efterårets designauktion, hvor vi også præsenterer Moos' for os hidtil usete lampe med navnet "Lidt af hvert" formgivet i 1947 og hans smukke taburet formgivet året efter. Den navnkundige arkitekt og samfundsrevser Poul Henningsen, hvis private bolig i Gentofte snart åbnes for offentligheden, er heller ikke til at komme udenom – slet ikke, når det gælder lampen "PH Septima 5" med de ravfarvede skærme (kat.nr. 1152, 1151 og 1116).

  
Jesper Bruun Rasmussen





## SPECIALISTS IN DESIGN



*Design*  
Peter Kjelgaard  
+45 8818 1191  
pkj@bruun-rasmussen.dk



*Design*  
Ole Ravn  
+45 8818 1192  
olr@bruun-rasmussen.dk



*Design*  
Amalie Hansen  
+45 8818 1194  
amh@bruun-rasmussen.dk



*Design*  
Anna B. Widenborg  
+45 8818 1187  
awi@bruun-rasmussen.dk



*Design*  
Andreas Krabbe  
+45 8818 1193  
ank@bruun-rasmussen.dk



*Paintings and design*  
Peter Beck – Aarhus  
+45 8818 1186  
pb@bruun-rasmussen.dk



*Design*  
Peter Tholstrup – Aarhus  
+45 8818 1195  
pt@bruun-rasmussen.dk



*Paintings and design*  
Frederik Bruun Rasmussen  
+45 8818 1003  
fbr@bruun-rasmussen.dk



*Silver and branding*  
Alexa Bruun Rasmussen  
+45 8818 1091  
alexa@bruun-rasmussen.dk



*Director of sales*  
Kasper Nielsen  
+45 8818 1121  
kn@bruun-rasmussen.dk

SILVER

Wednesday 28 September 4 pm

Lot 1012 - 1048







1012

**1012**  
**GEORG JENSEN**

b. Rådvaad 1866, d. Hellerup 1935

A set of ten hammered sterling silver cups. Stem with grapes and leaves. Georg Jensen 1945-1951. Designed 1928. Design no. 296 B. Total weight 940 gr. H. 7 cm. (10) *DKK 20,000-30,000 / € 2,700-4,050*





1013

**1013**  
**GEORG JENSEN**

b. Rådvaad 1866, d. Hellerup 1935

A hammered sterling silver pitcher with grapes. Handle of carved ebony. Georg Jensen after 1977. With date letter E11=2003. Designed 1925. Design no. 407. Weight 1080 gr. H. 23,3 cm.

*Literature: David A. Taylor & Jason W. Laskey: "Georg Jensen Holloware - The Silver Fund Collection", ill. p. 165.*

*Literature: Janet Drucker: "Georg Jensen - A Tradition of Splendid Silver", ill. p. 165.*

DKK 50,000 / € 6,700



1014

**1014**  
**JOHAN ROHDE**

b. Randers 1856, d. Hellerup 1935

"Acorn". Sterling silver cutlery. Georg Jensen after 1945. Designed 1915. Weight excluding pieces with steel 1821 gr. (59)

*Comprising:*

*10 dinner knives with long handle*

*10 dinner forks*

*10 dessert spoons*

*6 coffee spoons*

*12 pastry forks*

*2 potato spoons*

*1 large cream ladle*

*1 pie knife*

*1 steak fork*

*1 server with steel*

*DKK 20,000 / € 2,700*

**1015**  
**JOHAN ROHDE**

b. Randers 1856, d. Hellerup 1935

A pair of large, five-branch silver candelabra with leaf and cone ornamentation. Canted and domed base. Georg Jensen 1915-1930 and 1925-1932. Designed 1927. Design no. 474. Total weight 3400 gr. H. 42,5 cm. (2)

*Literature: David A. Taylor & Jason W. Laskey: "Georg Jensen Holloware - The Silver Fund Collection", ill. p. 181.*

*DKK 150,000-200,000 / € 20,000-27,000*





1016

**1016**  
**JOHAN ROHDE**

b. Randers 1856, d. Hellerup 1935

A set of 12 hammered sterling silver plates. Georg Jensen 1945-1977. Designed 1930. Design no. 587 C. Total weight 8511 gr. Diam. 28 cm. (12)

*DKK 30,000-40,000 / € 4,050-5,400*





1017

**1017**  
**JOHAN ROHDE**

b. Randers 1856, d. Hellerup 1935

"Acanthus". Sterling silver cutlery. Georg Jensen after 1945. Designed 1917. Weight excluding pieces with steel 1787 gr. In matching, custom-made box of rosewood, maple interior. Silver lock, lid with silver emblem. H. 22,3 cm. W. 40,5 cm. D. 26 cm. (59)

*Comprising:*

*12 dinner knives with long handle*  
*12 dinner forks*  
*6 luncheon knives with long handle*  
*6 luncheon forks*  
*6 large tea spoons*

*12 dessert spoons*  
*1 steak fork*  
*2 serving spoons*  
*1 vegetable fork*  
*1 sauce ladle*

*DKK 20,000 / € 2,700*

1018

**SIGVARD BERNADOTTE**

b. 1907, d. 2002

“Bernadotte”. Sterling silver cutlery. Georg Jensen 1945-1971 and after 1945. Designed 1939. Weight excluding pieces with steel 3522 gr. (107)

*Comprising:*

*12 luncheon knives with long handle*

*12 dinner knives with long handle*

*12 dinner forks*

*12 luncheon forks*

*12 dessert spoons*

*12 tea spoons*

*12 pastry forks*

*1 pie knife*

*1 small server with steel*

*2 herring forks*

*1 sugar spoon*

*1 marmelade spoon*

*1 bouillon spoon*

*1 sauce ladle*

*8 medium cold cuts forks*

*1 steak fork*

*1 long bottle opener*

*1 vegetable fork*

*1 large salad set with steel*

*1 sauce ladle*

*2 potato spoons*

*DKK 40,000 / € 5,400*



1018



1019

**1019**  
**JOHAN ROHDE**

b. Randers 1856, d. Hellerup 1935

A large sterling silver coffee- and tea set. Comprising a coffeepot, a teapot, a chocolate pitcher, a sugar bowl and cover, a creamer and a tray. Handles of carved ebony. Georg Jensen 1925-1932, 1933-1944 and 1945-1951. Designed 1915. Design no. 45 A and 45 C. Total weight 2625 gr. H. 1,3 - 22,5 cm. Tray: L. 33,3 cm. (6)

*DKK 40,000-60,000 / € 5,400-8,050*





**1020**  
**SIGVARD BERNADOTTE**

b. 1907, d. 2002

A pair of sterling silver candlesticks. Disc base. Georg Jensen after 1945. Designed 1938. Design no. 855 B. Total weight 886 gr. H. 25 cm. (2)

*Literature: David A. Taylor & Jason W. Laskey: "Georg Jensen Holloware - The Silver Fund Collection", ill. p. 275.*

*DKK 30,000 / € 4,050*

**1021**  
**GEORG JENSEN**

b. Rådvaad 1866, d. Hellerup 1935

An oval, hammered sterling silver tray with beaded rim. Georg Jensen 1945-1977. Design no. 210 U. Weight 402 gr. Weight 402 gr. H. 1 cm. W. 19 cm. L. 27 cm.

*DKK 15,000 / € 2,000*





1022

**1022**  
**SIGVARD BERNADOTTE**

b. 1907, d. 2002

"Bernadotte". Sterling silver cutlery. Georg Jensen after 1945.  
Designed 1939. Weight excluding pieces with steel 4023 gr.  
(121)

*Comprising:*

*18 dinner knives with long handle*

*18 dinner forks*

*18 dessert spoons*

*18 soup spoons*

*8 pastry forks*

*8 fruit knives*

*18 gilded mocha spoons*

*8 tea spoons*

*1 bottle opener with long handle*

*2 sauce spoons with steel bowl*

*2 serving spoons with steel bowl*

*2 steak forks*

*DKK 40,000 / € 5,400*



1023

**1023**  
**SIGVARD BERNADOTTE**

b. 1907, d. 2002

"Bernadotte". Sterling silver cutlery. Georg Jensen 1933-1944 and after 1945. Designed 1939. Weight excluding pieces with steel 3200 gr. (100)

*Comprising:*

- |                          |  |
|--------------------------|--|
| <i>12 dinner knives</i>  | <i>8 tea spoons</i>                      |
| <i>12 dinner forks</i>   | <i>7 pastry forks</i>                    |
| <i>12 dinner spoons</i>  | <i>1 medium cold cuts fork</i>           |
| <i>12 luncheon forks</i> | <i>3 short cold cuts fork</i>            |
| <i>12 dessert spoons</i> | <i>1 steak fork</i>                      |
| <i>12 fruit knives</i>   | <i>1 salt spoon</i>                      |
| <i>7 coffee spoons</i>   | <i>DKK 40,000-50,000 / € 5,400-6,700</i> |



1024

1024

SØREN GEORG JENSEN

b. Copenhagen 1917, d. s.p. 1982

A pair of sterling silver candlesticks. Georg Jensen 1945-1977. Design no. 1141. Total weight 230 gr. H. 10 cm. Inner diameter of candle holder 2,2 cm. (2)

*Literature: Janet Drucker: "Georg Jensen - A Tradition of Splendid Silver", ill. p. 233. DKK 10,000 / € 1,350*

1025

JØRGEN JENSEN

b. 1895, d. 1966

A cylindrical sterling silver Art Deco jar and cover. Band decoration and four edged feet. Georg Jensen 1933-1944. Design no. 796. Designed 1936. Weight 1475 gr. H. 22 cm.

*Literature: David A. Taylor & Jason W. Laskey: "Georg Jensen Holloware. The Silver Fund Collection", ill. p. 263. DKK 40,000-50,000 / € 5,400-6,700*



1025





1026

**1026**  
**HENNING KOPPEL**

b. Copenhagen 1918, d. s.p. 1981

A sterling silver pitcher. Georg Jensen 1945-1977.  
Design no. 1017. Weight 584 gr. H. 12,3 cm.

*DKK 15,000-20,000 / € 2,000-2,700*

**1027**  
**OLE HAGEN**

b. 1913, d. 1984

A sterling silver dish and cover. Finial and handle of ivory.  
Made and stamped by A. Michelsen. Designed  
1955. Weight 828 gr. H. 11,5 cm. L. 31,2 cm.

*DKK 20,000 / € 2,700*



1027



1028

**1028**  
**KAY FISKER**

b. Frederiksberg 1893, d. København 1965

A sterling silver pitcher. Made and stamped by A. Michelsen anno 1932. Designed 1927. Weight 615 gr. H. 24 cm.

*Literature: Malene Dybbøl & Sabrina Vinther: "Hofjuveler A. Michelsen - Fra stilkopi til arkitekt-sølv", ill. p. 105. DKK 25,000 / € 3,350*

**1029**  
**IB BLUITGEN**

b. 1921, d. 2013

Sterling silver teapot with ivory finial. Georg Jensen 1945-1977. Designed 1951. Design no. 984 B. Weight 875 gr. H. incl. handle 20 cm.

*Literature: David A. Taylor & Jason W. Laskey: "Georg Jensen Holloware - The Silver Fund Collection", ill. p. 297. DKK 30,000 / € 4,050*



1029



1030

**1030**  
**TIAS ECKHOFF**

b. Vestre Slidre 1926

"Cypress". Sterling silver cutlery. Georg Jensen after 1945. Designed 1953. Weight excluding pieces with steel 3080 gr. (121)

*Comprising:*

- |                           |  |
|---------------------------|--|
| <i>25 dinner knives</i>   | <i>5 butter knives</i>                   |
| <i>18 dinner forks</i>    | <i>2 long cold cuts forks</i>            |
| <i>14 luncheon knives</i> | <i>1 salad set</i>                       |
| <i>15 luncheon forks</i>  | <i>2 salad set with steel</i>            |
| <i>14 dessert spoons</i>  | <i>1 sauce ladle</i>                     |
| <i>11 tea spoons</i>      | <i>1 carving set</i>                     |
| <i>12 pastry forks</i>    | <i>DKK 25,000-30,000 / € 3,350-4,050</i> |



1031

**1031**  
**HENNING KOPPEL**

b. Copenhagen 1918, d. s.p. 1981

A sterling silver coffee set. Comprising a coffeepot, a creamer and a sugar bowl. Coffeepot with guaiacum wood handle. Georg Jensen after 1945. Designed 1952. Design no. 1017. Total weight 1124 gr. H. 3,5 - 15,5 cm. (3)

*Literature: David A. Taylor & Jason W. Laskey: "Georg Jensen Holloware - The Silver Fund Collection", ill. p. 304.*

*Literature: Janet Drucker: "Georg Jensen - A Tradition of Splendid Silver", ill. p. 230.*

DKK 40,000-50,000 / € 5,400-6,700

**1032**  
**HENNING KOPPEL**

b. Copenhagen 1918, d. s.p. 1981

A sterling silver pitcher with guaiacum wood handle. Georg Jensen after 1977. With date letter D10=1978. Designed 1952. Design no. 1226. Weight 597 gr. H. 13,5 cm.

*Literature: David A. Taylor & Jason W. Laskey: "Georg Jensen Holloware - The Silver Fund Collection", ill. p. 304.*

DKK 15,000-20,000 / € 2,000-2,700



1032





1033

**1033**  
**HARALD NIELSEN**

b. Baarse 1892, d. 1977

"Pyramid". Sterling silver cutlery. Georg Jensen 1926-1927, 1929-1934, 1933-1944 and after 1945. Designed 1926. Weight excluding pieces with steel 5249 gr. (113)

Comprising:

- |                   |                        |                             |
|-------------------|------------------------|-----------------------------|
| 17 dinner forks   | 2 child's forks        | 1 herring fork              |
| 15 dinner spoons  | 2 marmelade spoons     | 1 small salad set with horn |
| 17 luncheon forks | 1 small serving spoon  | 1 pie knife                 |
| 17 dessert spoons | 1 medium serving spoon | 1 tea strainer with base    |
| 6 fruit knives    | 1 large serving spoon  | 1 steak fork                |
| 8 pastry forks    | 1 porridge spoon       | 1 sauce ladle               |
| 13 coffee spoons  | 1 tomato knife         | 1 salt spoon                |
| 2 child's spoons  | 1 cheese plane         | 1 soup ladle                |

DKK 40,000 / € 5,400



1034

**1034**  
**HARALD NIELSEN**

b. Barse 1892, d. 1977

"Pyramid". A large, circular sterling silver dish. Georg Jensen 1933-1944. Designed 1930. Design no. 600 M. Weight 1510 gr. H. 2,3 cm. Diam. 40 cm. *Literature: David A. Taylor & Jason W. Laskey: "Georg Jensen Holloware - The Silver Fund Collection", ill. p. 212.*

DKK 20,000 / € 2,700



1035

**SIGVARD BERNADOTTE**

b. 1907, d. 2002

A pair of rare three-branch sterling silver candelabra.  
Georg Jensen 1945-1951. Design no. 855 C. Total  
weight 2010 gr. H. 37 cm. (2) *DKK 60,000 / € 8,050*





1036

**SIGVARD BERNADOTTE**

b. 1907, d. 2002

"Bernadotte". Sterling silver cutlery. Georg Jensen after 1945. Designed 1939. Weight excluding pieces with steel 3211 gr. (95)

*Comprising:*

*12 dinner knives*

*12 dinner forks*

*8 dinner spoons*

*12 large tea spoons*

*12 tea spoons*

*8 child's forks/dessert forks*

*6 pastry forks*

*9 fruit knives*

*4 medium cold cuts forks*

*1 marmelade spoon*

*1 pie knife*

*1 server with steel*

*1 bottle opener with short handle*

*1 bottle opener with long handle*

*1 herring fork*

*1 citrus knife*

*1 salad set*

*1 salad set with steel*

*2 sauce ladles*

*1 steak fork*

*DKK 30,000 / € 4,050*



1037

**HARALD NIELSEN**

b. Baarse 1892, d. 1977

"Pyramid". Sterling silver cutlery. Georg Jensen after 1945.  
Designed 1926. Weight excluding pieces with steel 2890 gr.  
(91)

*Comprising:*

*12 dinner knives with long handle*

*12 dinner forks*

*12 dinner spoons*

*11 luncheon knives with long handle*

*12 luncheon forks*

*8 dessert spoons*

*11 coffee spoons*

*8 pastry forks*

*1 small pie server with steel*

*1 pie knife*

*1 fried egg server*

*1 mayonnaise ladle*

*1 potato spoon*

*DKK 40,000 / € 5,400*



1038

1038

**HARALD NIELSEN**

b. Baarse 1892, d. 1977

"Pyramid". Sterling silver coffee set. Comprising a coffeepot, a creamer and a sugar bowl. Coffeepot's handle of carved ebony. Georg Jensen 1945-1951. Designed 1928. Design no. 600 A. Total weight 1068 gr. H. 7,2. - 18,3 cm. (3)

*Literature: David A. Taylor & Jason W. Laskey: "Georg Jensen Holloware - The Silver Fund Collection", ill. p. 207.*

*DKK 20,000-25,000 / € 2,700-3,350*





1039

**SIGVARD BERNADOTTE**

b. 1907, d. 2002

"Bernadotte". Sterling silver cutlery. Georg Jensen after 1945. Designed 1939. Weight excluding pieces with steel 2756 gr. (80)

*Comprising:*

*2 dinner forks*

*1 dinner spoons*

*12 luncheon knives with long handle*

*12 dessert forks*

*12 dessert spoons*

*12 pastry forks*

*12 coffee spoons*

*12 tea spoons*

*1 sugar spoon*

*1 potato spoon*

*1 large server*

*1 sauce ladle*

*1 steak fork*

*DKK 15,000-20,000 / € 2,000-2,700*



1040

**1040**  
**KAY FISKER**

b. Frederiksberg 1893, d. København 1965

A sterling silver pitcher. Made and stamped by A. Michelsen, 1,0 L. With date letter 19=1959. Designed 1927. Weight 640 gr. H. 24,2 cm.

*Literature: Malene Dybbøl & Sabrina Vinther: "Hofjuveler A. Michelsen - Fra stilkopi til arkitektsølv", ill. p. 105.*

DKK 20,000 / € 2,700

**1041**  
**KAY FISKER**

b. Frederiksberg 1893, d. København 1965

A set of four sterling silver candlesticks. Disc shaped base. Made and stamped by A. Michelsen. With date letters C9=1953 and A9=1951. Total weight 556 gr. H. 4,5 cm. Foot diam. 11,2 cm. Inner diam. of candle holders circa 2,3 cm. (4)

DKK 20,000 / € 2,700



1041



1042

**1042**  
**HANS HANSEN**

A circular sterling silver five-branch candelabrum. Centre with a large silver sphere. Made and stamped by Hans Hansen anno 1937. Weight 1819 gr. H. 11,5 cm. Diam. 39 cm.

*DKK 20,000 / € 2,700*



1043

1044

**GEORG JENSEN**

b. Rådvaad 1866, d. Hellerup 1935

"Louvre". A large, hammered sterling silver fruit bowl. Georg Jensen after 1945. Designed 1912. Design no. 19 B. Weight 1145 gr. H. 20 cm. Diam. 24,3 cm.

*Literature: Thomas C. Thulstrup: "Georg Jensen - Sølv & Design", ill. p. 33.*

*Litteratur: David A. Taylor, Jason W. Laskey: "Georg Jensen Holloware - The Silver Fund Collection", ill. s. 59.*

DKK 30,000 / € 4,050



1044

1043

**HARALD NIELSEN**

b. Baarse 1892, d. 1977

"Old Danish". Sterling silver cutlery. Georg Jensen after 1945. Designed 1947. Weight excluding pieces with steel 2785 gr. (77)

*Comprising:*

12 dinner knives with long handle

12 dinner forks

12 dessert spoons

12 coffee spoons

12 tea spoons

11 pastry forks

1 herring fork

1 pie knife

1 large serving spoon

1 medium serving spoon

1 sauce ladle

1 steak fork

DKK 25,000 / € 3,350





1045

1045

**GEORG JENSEN**

b. Rådvaed 1866, d. Hellerup 1935

"Continental". Sterling silver cutlery with hammered surface. Georg Jensen after 1945. Designed 1906.

Weight excluding pieces with steel 2922 gr. (92)

*Comprising:*

12 dinner knives

12 dinner forks

11 dinner spoons

12 luncheon knives

12 luncheon forks

7 dessert spoons

11 coffee spoons

6 pastry forks

2 cold cut forks

1 canapé server

1 pie knife

1 potato spoon

1 porridge spoon

1 bouillon spoon

1 compote spoon

1 salt spoon

DKK 25,000-30,000 / € 3,350-4,050



**1046**  
**GEORG JENSEN**

b. Rådvaad 1866, d. Hellerup 1935

A pair of large, hammered sterling silver candlesticks with spiral fluted stem and grapes. Georg Jensen after 1977, with date letter L11=2009. Designed 1925. Design no. 263 B. Weight 1424 gr. H. 20,4 cm. (2)

*DKK 50,000 / € 6,700*

**1047**  
**GEORG JENSEN**

b. Rådvaad 1866, d. Hellerup 1935

Hammered silver tea set. Comprising a teapot, a creamer and a sugar bowl. Teapot with carved ebony finial. Georg Jensen 1915-1927. Designed 1906. Design no. 3. Total weight 1038 gr. H. 8,5 - 14,8 cm. (3)

*DKK 20,000 / € 2,700*





1048

**1048**  
**GEORG JENSEN**

b. Rådvaad 1866, d. Hellerup 1935

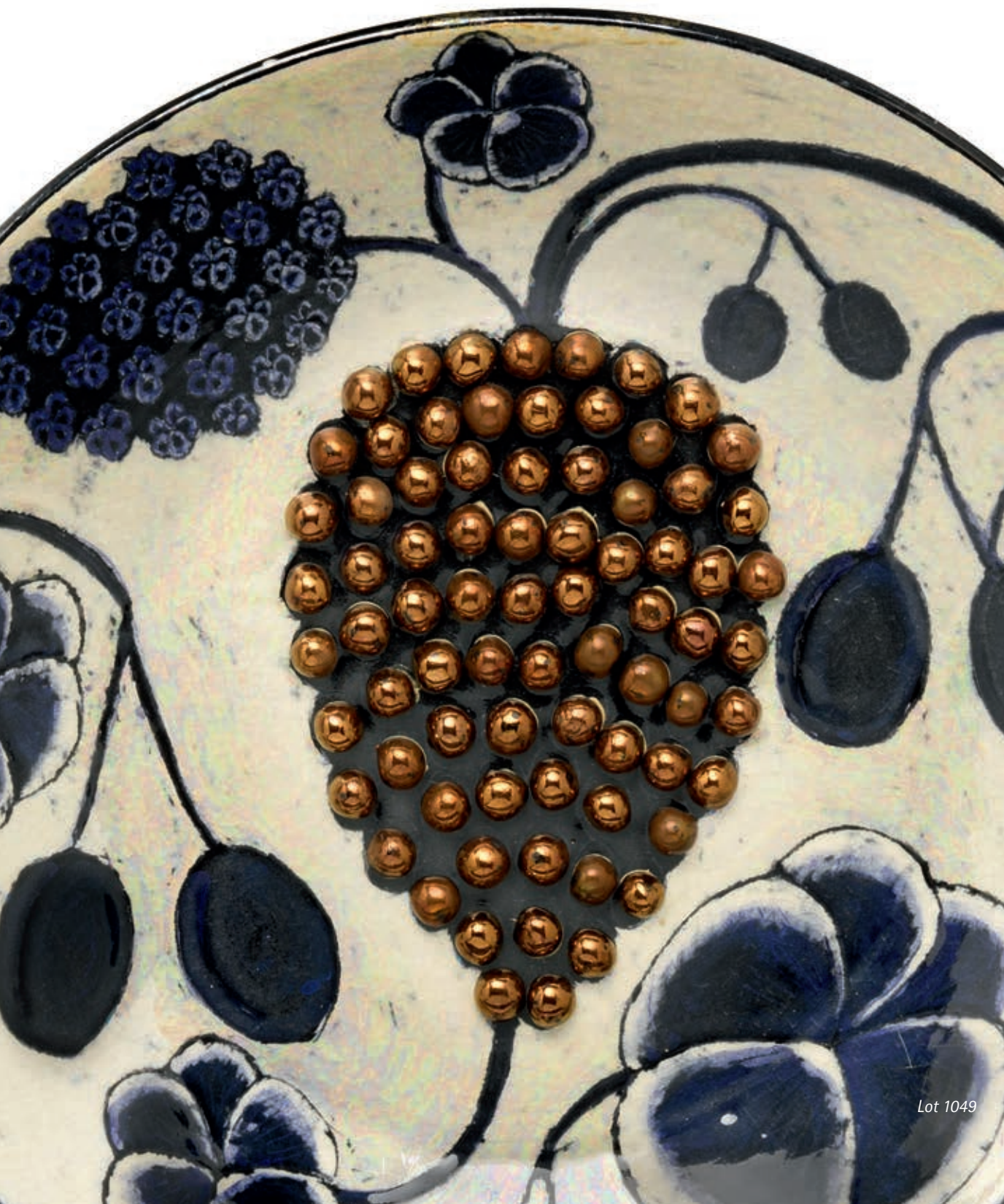
A hammered sterling silver tazza. Spiral fluted stem and grapes. Circular foot. Georg Jensen 1945-1977. Designed 1918. Design no. 264 A. Weight 1366 gr. H. 26,6 cm. *DKK 50,000 / € 6,700*



CERAMICS

Wednesday 28 September

Lot 1049 - 1103



Lot 1049





1049

1049 <sup>CP</sup>

**BIRGER KAIPIAINEN**

b. Björneborg 1915, d. 1988

A circular ceramics dish with motifs of flowers, fruits and berries. Decorated with white, bluish purple and copper glaze. Iridescent surface. Signed Kaipainen, Arabia. Made by Arabia, Finland. Unique. H. 7 cm. Diam. 42 cm. *DKK 30,000 / € 4,050*



1050

**1050 \***  
**AXEL SALTO**

b. Copenhagen 1889, d. Frederiksberg 1961

A fruit-shaped stoneware vase modelled with narrow mouth. Decorated with solfatara glaze. Signed Salto, 20818. Royal Copenhagen. Made 1969-1974. H. 21 cm.

*DKK 50,000 / € 6,700*





1051

1051 <sup>CD</sup>  
PER WEISS

b. Melby 1953

A ceramics floor vase decorated with relief windings and white, blue and reddish brown glaze. Stamped monogram. Unique. H. 58 cm.

*DKK 25,000 / € 3,350*

1052 <sup>CD</sup>

**BIRGER KAIPAINEN**

b. Björneborg 1915, d. 1988

A circular ceramics dish with motifs of fruits and flowers. Decorated with white, ochre, green, greyish black, dark blue, silver and rose glaze. Iridescent surface. The underside decorated with dark blue glaze. Signed Kaipainen. Made and signed by Arabia, Finland. Unique. H. 7 cm. Diam. 41,5 cm.

*DKK 15,000-20,000 / € 2,000-2,700*



1052





1053

**1053** <sup>CD</sup>  
**BODIL MANZ**

b. Frederiksberg 1943

A cylindrical thin porcelain bowl. Exterior decorated with black glazed pattern. Inside with a few blue glazed squares. Signed Bodil Manz. Unique. H. 18,5 cm. Diam. circa 23 cm.

*DKK 15,000 / € 2,000*

**1054** <sup>CD</sup>  
**ALEV EBÜZZIYA SIESBYE**

b. Istanbul 1938

A circular stoneware bowl decorated with cobalt glaze. The upper rim with unglazed geometric pattern. Signed Alev '87. Unique. H. 11,4 cm. Diam. 21,8 cm.

*DKK 20,000-30,000 / € 2,700-4,050*



1054



1055

1055 <sup>CD</sup>  
ALEV EBÜZZIYA SIESBYE

b. Istanbul 1938

A large, circular stoneware bowl decorated with azure glaze. The upper rim decorated with light turquoise blue glaze. Signed Alev. Made 1997. Unique. H. 22 cm. Diam. 32 cm. DKK 80,000-100,000 / € 11,000-13,500



1056

1056 <sup>CP</sup>

ALEV EBÜZZIYA SIESBYE

b. Istanbul 1938

A tall stoneware vase with horizontal white and cobalt glaze, unglazed lines. Signed Alev, M17. Unique. H. 31,5 cm.

*Acquired by present owner at Galleri Egelund, Copenhagen. The vase's underside with label dated by the artist, 1997.*

*DKK 20,000 / € 2,700*



1057

1057 <sup>CD</sup>

ALEV EBÜZZIYA SIESBYE

b. Istanbul 1938

A circular stoneware bowl decorated with transparent, light green glaze. The upper rim with rust red glaze. Signed Alev 72. Unique. H. 16 cm. Diam. ca. 36 cm.

*DKK 30,000 / € 4,050*





1058

1058 <sup>CD</sup>

**BODIL MANZ**

b. Frederiksberg 1943

Two cylindrical, thin porcelain bowls. One decorated with thin blue glazed line pattern and with black glazed upper rim. The other bowl decorated with thin blue glazed line patterns, blue glazed upper rim and blue- and black glazed square fields. Both signed Bodil Manz. Unique. H. circa 12 cm. Diam. circa 13,5 - 14 cm. (2)

*DKK 12,000 / € 1,600*



1059



1060

1059 <sup>CD</sup>  
**BODIL MANZ**

b. Frederiksberg 1943

Five small cylinders. Thin porcelain decorated with geometric patterns and line decorations in resp. blue, green, black and orange glaze. Signed Bodil Manz. Unique. H. 7,5. - 8 cm. Diam. 9. - 9,5 cm. (5)

DKK 15,000 / € 2,000

1060 <sup>CD</sup>  
**ALEV EBÜZZIYA SIESBYE**

b. Istanbul 1938

A circular stoneware bowl decorated with white glaze. The upper rim decorated with cobalt glaze. Signed Alev. Unique. H. 14,5 cm. Diam. 21 cm.

*Acquired by present owner at Galleri Egelund, Copenhagen. The bowl's underside with label dated by the artist, 1994.*

DKK 20,000 / € 2,700



1061

**1061<sup>CD</sup>**  
**BO KRISTIANSEN**

b. Göteborg 1944, d. Copenhagen 1991

A four-sided stoneware vase decorated with scratched letters. Narrow, circular mouth. Decorated with dark blue, light blue, grey and green glaze. Unsigned. Unique. H. 27,5 cm. W. 23 cm. L. 25,3 cm. *DKK 12,000-15,000 / € 1,600-2,000*

**1062<sup>CD</sup>**  
**ALEV EBÜZZIYA SIESBYE**

b. Istanbul 1938

A small, circular stoneware bowl decorated with turquoise blue glaze. Signed Alev '85. H. 9,5 cm. Diam. 14,5 cm. *DKK 8,000 / € 1,100*



1062



1063

1063 <sup>CD</sup>  
**BODIL MANZ**

b. Frederiksberg 1943

"Sejerø". A cylindrical thin porcelain bowl, stepped wall. Decorated with black glazed pattern. Signed Bodil Manz. Made 2005. Unique. H. 15 cm. Diam. 18,5 cm.

*Literature: Bodil Busk Laursen, a.o.: "The Ceramist Bodil Manz", the present bowl ill. p. 94.*

DKK 12,000-15,000 / € 1,600-2,000

1064 <sup>CD</sup>  
**BODIL MANZ**

b. Frederiksberg 1943

Two oval shaped thin porcelain bowls with pointed end. Decorated with black glazed patterns. Signed Bodil Manz. Unique. H. 10,3 cm. L. 13 - 13,5 cm. (2)

DKK 10,000 / € 1,350



1064





1065

**1065<sup>CD</sup>**  
**BODIL MANZ**

b. Frederiksberg 1943

Five small, cylindrical thin porcelain bowls. Decorated with geometric shaped patterns in blue, black, red, orange and green glaze. Signed Bodil Manz. Unique. H. 7,5 - 8 cm. Diam. circa 9 - 9,5 cm. (5)

*DKK 15,000 / € 2,000*

**1066<sup>CD</sup>**  
**ALEV EBÜZZIYA SIESBYE**

b. Istanbul 1938

A circular stoneware bowl. Decorated with light bluish violet glaze. The upper rim with unglazed lines. Signed Alev '84. Unique. H. 17 cm. Diam. 28 cm.

*DKK 25,000 / € 3,350*



1066



1067

**1067**  
**EMILE GALLÉ**

b. Nancy 1846, d. s.p. 1904

A large circular overlaid and acid etched vase of yellow frosted glass with red glass in the shape of cherry branches. Signed Gallé. Circa 1900. H. 37 cm.

*Provenance: Acquired by present owner at Bruun Rasmussen auction in 1988, auction 510, lot number 1476.*

*DKK 30,000-40,000 / € 4,050-5,400*



1068

1068 <sup>CD</sup>

GERTRUD VASEGAARD

b. Rønne 1913, d. 2007

MYRE VASEGAARD

b. 1936, d. 2006

A stoneware bowl with tall sides. Decorated with transparent glaze and with brown glazed geometric patterns and edges. Signed monograms. Unique. H. 12 cm. Diam. 20,4 - 21 cm.

DKK 10,000 / € 1,350

1069 <sup>CD</sup>

GERTRUD VASEGAARD

b. Rønne 1913, d. 2007

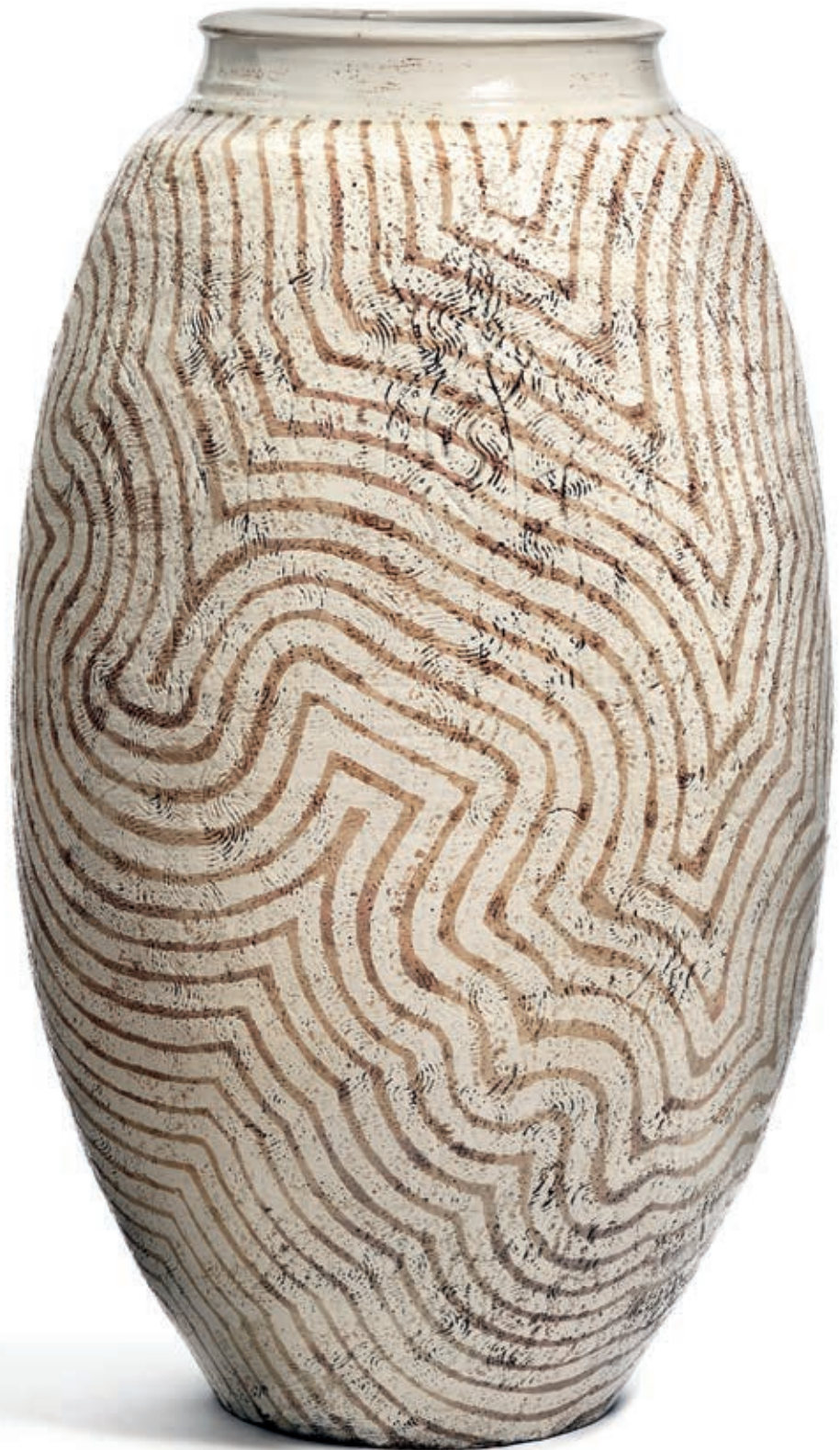
A large stoneware bowl decorated with transparent glaze. Exterior decorated with brown glazed geometric pattern. Some blue elements. Signed monogram. Unique. H. 17,5 - 18 cm. Diam. 38,5 - 42 cm.

DKK 20,000 / € 2,700



1069





1070<sup>00</sup>  
PER WEISS

b. Melby 1953

A colossal ceramics floor vase. Decorated with relief windings and with white and brown glaze. Stamped monogram. Unique. H. 107 cm.

*DKK 30,000-40,000 / € 4,050-5,400*

1070





1071

1071 <sup>CD</sup>

SVEN PALMQVIST

b. 1906, d. 1984

"Ravenna". A circular bowl of glass inlaid with blue and orange pattern. Signed Sven Palmqvist, Orrefors, Ravenna P 5032. Made by Orrefors, Sweden. H. 23,5 cm. Diam. 28 cm. *DKK 30,000 / € 4,050*



1072

1072 <sup>CD</sup>

**ALEV EBÜZZIYA SIESBYE**

b. Istanbul 1938

A circular stoneware bowl decorated with cobalt glaze. The upper rim decorated with black glaze. Signed Alev '88. Unique. H. 15,5 cm. Diam. 25,6 cm.

*DKK 50,000-60,000 / € 6,700-8,050*

1073 <sup>CD</sup>

**BODIL MANZ**

b. Frederiksberg 1943

Three porcelain bowls, one asymmetric and two cylindrical. Asymmetric bowl decorated with black and blue glazed geometric patterns. One bowl with stepped wall, decorated with thin blue glazed line pattern and black glazed upper rim. Bowl with square relief pattern and thin blue glazed line pattern. Black glazed upper rim. All signed Bodil Manz. Unique. H. 11,5 - 12 cm. Diam. resp. 14,5 - 14 cm. (3)

*DKK 15,000-20,000 / € 2,000-2,700*



1073



1074

1074 <sup>CD</sup>

ALEV EBÜZZIYA SIESBYE

b. Istanbul 1938

A large, circular stoneware bowl. Decorated with light turquoise green glaze. The upper rim with unglazed line patterns. Signed Alev '88. Unique. H. 20 cm. Diam. 38,5 cm. *DKK 50,000 / € 6,700*



1075

**1075**  
**AXEL SALTO**

b. Copenhagen 1889, d. Frederiksberg 1961

A stoneware vase modelled in budded style with narrow mouth. Decorated with sun glaze with blue elements. Signed Salto, 21471. Royal Copenhagen. Made 1965. H. 22 cm.

*DKK 40,000-50,000 / € 5,400-6,700*



1076

**1076**  
**AXEL SALTO**

b. Copenhagen 1889, d. Frederiksberg 1961

A gourd-shaped stoneware vase decorated with blue mussel glaze. Signed Salto, 20741. Royal Copenhagen. Made 1957. H. 19,5 cm. *DKK 25,000 / € 3,350*



1077 <sup>CD</sup>

**GERD BØGELUND, KNUD ANDERSEN**

b. Gentofte 1923, d. 1987, b. 1892, d. 1966

A stoneware lid jar modelled with leaves in relief. Decorated with celadon glaze. Signed monogram. Royal Copenhagen. Lid and stand of patinated and partly gilded bronze. Stamped monogram KA for Knud Andersen. Royal Copenhagen. Unique. H. incl. stand and lid 22 cm.

*DKK 30,000-40,000 / € 4,050-5,400*



1077

1078

**AXEL SALTO**

b. Copenhagen 1889, d. Frederiksberg 1961

A circular stoneware bowl. Exterior modelled with fluted pattern. Decorated with sung glaze. Signed Salto, 20722. Royal Copenhagen. H. 8 cm. Diam. 29 cm.

*DKK 20,000 / € 2,700*



1078

1079

**AXEL SALTO**

b. Copenhagen 1889, d. Frederiksberg 1961

A round stoneware vase with relief leaf patterns. Decorated with solfatar glaze. Signed Salto. Royal Copenhagen. H. 17 cm. Diam. 18 cm.

*DKK 15,000-20,000 / €*



1079



1080

1080

**AXEL SALTO**

b. Copenhagen 1889, d. Frederiksberg 1961

Two cylindrical stoneware vases modelled in bud style. Decorated with sung glaze. Signed Salto. Royal Copenhagen. Tallest vase numbered 20564. Lowest vase made 1951. H. 18. and 18,6 cm. (2)

*DKK 30,000-40,000 / € 4,050-5,400*



1081

**1081**  
**THORVALD BINDESBØLL**

b. Copenhagen 1846, d. s.p. 1908

A large earthenware vase, decorated with scratched patterns and transparent, brown glaze. Signed monogram, 91, Eifrig, Valby. Unique. H. 43 cm.

*DKK 40,000 / € 5,400*





1082

**1082**  
**J AIS NIELSEN**

b. Copenhagen 1885, d. Hellerup 1961

A tall stoneware vase. Modelled with two small handles, biblical figures and latin script. Decorated with oxblood glaze. Signed Jais, 21016. Royal Copenhagen. H. 57 cm.

*DKK 20,000 / € 2,700*





1083

1083 <sup>CD</sup>

ALEV EBÜZZIYA SIESBYE

b. Istanbul 1938

A circular stoneware bowl decorated with grey and brown glaze. Signed Alev. Royal Copenhagen. Made 1962. Unique. H. 11 cm. Diam. 17,5 cm.

*DKK 8,000 / € 1,100*

1084

AXEL SALTO

b. Copenhagen 1889, d. Frederiksberg 1961

A small, circular stoneware bowl. Exterior with fluted pattern. Decorated with solfatara glaze. Signed Salto, 20726. Royal Copenhagen. H. 7 cm. Diam. 17,2 cm.

*DKK 12,000-15,000 / € 1,600-2,000*



1084



1085

**1085**  
**BJØRN WIINBLAD**

b. Copenhagen 1918, d. 2006

A large earthenware lid jar. Partly modelled with patterns. Decorated with transparent dark green, blue and brownish violet glaze. Stamped signature Bjørn Wiinblad. H. 70 cm. DKK 25,000 / € 3,350



1086

1086 <sup>CD</sup>

**ALEV EBÜZZIYA SIESBYE**

b. Istanbul 1938

A circular stoneware dish, partly decorated with Jade green glaze with blue elements. White glazed formations and line patterns, formations' edges unglazed. Signed Alev '75. Unique. H. 11,5 cm. Diam. 46,5 cm.

*Exhibited: Design Museum Denmark, 31. May - 4. August 2002.  
The present dish is illustrated in the exhibition catalogue, p. 11.*

*DKK 40,000 / € 5,400*





1087

1087 <sup>CD</sup>

**ALEV EBÜZZIYA SIESBYE**

b. Istanbul 1938

A small circular stoneware bowl, decorated with light turquoise green glaze. The upper rim with unglazed line patterns. Signed Alev '91. Unique. H. 7,9 cm. Diam. circa 15,5 cm. *DKK 10,000 / € 1,350*

1088 <sup>CD</sup>

**ALEV EBÜZZIYA SIESBYE**

b. Istanbul 1938

A circular stoneware bowl. Decorated with reddish brown glaze. The upper rim with ochre brown glaze. Signed Alev '78. Unique. H. 13,7 cm. Diam. 25 - 26 cm. *DKK 40,000 / € 5,400*



1088





1089

1089 <sup>CD</sup>

**BO KRISTIANSEN**

b. Göteborg 1944, d. Copenhagen 1991

A sculptural stoneware object with scratched letters. Decorated with rose, black, grey and golden glaze. Unsigned. Unique. H. 25 cm. W. 9,5 cm. L. 8,8 cm.

*DKK 15,000 / € 2,000*

1090 <sup>CD</sup>

**BODIL MANZ**

b. Frederiksberg 1943

A large asymmetric shaped bowl of thin porcelain. Decorated with horizontal, black glazed line patterns. Signed Bodil Manz. H. 20,5 cm. L. 28,5 cm. W. 24 cm.

*DKK 15,000 / € 2,000*



1090



1091

**1091**<sup>CD</sup>  
**BODIL MANZ**

b. Frederiksberg 1943

A cylindrical thin porcelain bowl, decorated with resp. black and green glaze in geometric patterns. Unique. H. 19 cm. Diam. circa 23 cm.

*DKK 15,000 / € 2,000*

**1092**<sup>CD</sup>  
**ALEV EBÜZZIYA SIESBYE**

b. Istanbul 1938

A circular stoneware bowl decorated with turquoise glaze. The upper rim decorated with dark turquoise glaze. Signed Alev. Unique. H. 10,3 cm. Diam. 18 cm.

*DKK 15,000-20,000 / € 2,000-2,700*



1092



1093 <sup>CD</sup>

PER WEISS

b. Melby 1953

A large ceramics floor vase. Surface with relief windings. Decorated with white glaze and windings in beige, brown and grey. Stamped monogram. Unique. H. 95 cm.

*DKK 40,000-50,000 / € 5,400-6,700*



1093



1094

1094 <sup>CD</sup>

**GERTRUD VASEGAARD**

b. Rønne 1913, d. 2007

**MYRE VASEGAARD**

b. 1936, d. 2006

A stoneware bowl, slightly four-sided shape. Decorated with transparent glaze with brown and grey glazed pattern with blue elements. Signed monograms. Unique. H. 14,8 cm. W. 21,8 cm. L. 21 cm.

*DKK 15,000/€ 2,000*

1095 <sup>CD</sup>

**ALEV EBÜZZIYA SIESBYE**

b. Istanbul 1938

A circular stoneware bowl. Exterior partly decorated with transparent glazed zigzag pattern. Inside decorated with transparent glaze, the upper part of inner rim with unglazed line patterns. Unglazed areas with somewhat orange-brown surface due to the process of making. Signed Alev '76. Unique. H. 11 cm. Diam. ca. 19 cm.

*DKK 12,000-15,000/€ 1,600-2,000*



1095





1096

**1096**  
**ARNE BANG**

b. Frederiksberg 1901, d. Fensmark 1983

Four stoneware vases modelled with fluted patterns. Decorated with resp. greyish white and greyish brown glaze. Signed monogram, two resp. 139 and 179. H. 10,3 - 16,8 cm. (4) *DKK 30,000 / € 4,050*

**1097**  
**ARNE BANG**

b. Frederiksberg 1901, d. Fensmark 1983

A circular stoneware dish, exterior modelled with vertical fluted pattern. Decorated with greyish white glaze. Signed monogram, 154. H. 6,5 cm. Diam. 35 cm. *DKK 15,000 / € 2,000*



1097



1098

**1098**  
**ARNE BANG**

b. Frederiksberg 1901, d. Fensmark 1983

Three bowls and a vase of stoneware modelled with vertical, fluted pattern. Decorated with blue glaze with green and some grey elements. Signed monogram, three resp. 122, 123 and 139. Bowls: H. 6,4 - 10,4 cm. Diam. 12,7 - 21,3 cm. Vase: H. 17 cm. (4)

*DKK 30,000 / € 4,050*

**1099**  
**ARNE BANG**

b. Frederiksberg 1901, d. Fensmark 1983

A four-sided stoneware vase decorated with light grey glaze. Signed monogram, 78. H. 13,9 cm. W. 11 cm.

*DKK 12,000 / € 1,600*



1099



1100

1100 <sup>CD</sup>  
CARL HALIER

b. 1873, d. 1948

A stoneware lid jar decorated with sung glaze. Signed monogram. Royal Copenhagen. Lid of patinated bronze. Not stamped. H. 20,5 cm.

*DKK 20,000 / € 2,700*



**1101**  
**AXEL SALTO**

b. Copenhagen 1889, d. Frederiksberg 1961

A stoneware vase modelled in budded style. Decorated with sung glaze. Signed Salto, 20987. Royal Copenhagen. Made 1969–1974. H. 14,5 cm.

*DKK 20,000 / € 2,700*



1101

**1102**  
**AXEL SALTO**

b. Copenhagen 1889, d. Frederiksberg 1961

A circular stoneware bowl. Exterior modelled with fluted pattern. Decorated with sung glaze. Signed Salto, 20568. Royal Copenhagen. H. 15,2 cm. Diam. 25,5 cm.

*DKK 20,000 / € 2,700*



1102





1103

1103 <sup>CD</sup>

**NILS THORSSON**

b. Eslöv, Skåne County 1898

**KNUD ANDERSEN**

d. 1975, b. 1892, d. 1966

A stoneware lid jar decorated with oxblood glaze. Signed monogram. Royal Copenhagen. With later lid of patinated and partly gilded bronze. Stamped monogram KA for Knud Andersen. Royal Copenhagen. H. 27 cm. *DKK 20,000 / € 2,700*

FURNITURE, LAMPS  
AND CARPETS

Thursday 29 September 4 pm  
Lot 1104 - 1280



Lot 1151



1104 ©

IB KOFOD-LARSEN

b. 1921, d. 2003

"Elizabeth". A pair of easy chairs with Brazilian rosewood frame. Sides, back and loose seat cushion upholstered with patinated, original cognac coloured leather. Model U-56. Designed 1956. These examples made 1960s by Christensen & Larsen Cabinetmakers, stamped by maker. (2)

*Model presented at The Copenhagen Cabinetmakers' Guild Exhibition at Designmuseum Danmark, 1958.*

*Literature: Grete Jalk [ed.]: "40 Years of Danish Furniture Design", vol. 3, p. 48-49.*

*DKK 100,000 / € 13,500*



1104





1105



1105

1105 ©

**STEFFEN SYRACH-LARSEN**

Brazilian rosewood dining room suite consisting of six high back armchairs and a oval dining table with extension and three extra leaves. Seat and back upholstered with patinated light brown leather. These examples made 1960s by cabinetmaker Gustav Bertelsen. Table: H. 77 cm. L. 186/350 cm. W. 112 cm. (7) *DKK 40,000-50,000 / € 5,400-6,700*



1106

1106

**HANS J. WEGNER**

b. Tønder 1914, d. Gentofte 2007

"RY 25". Rosewood sideboard with rectangular legs. Front with tambour doors, behind which oak interior with trays and adjustable shelves. Steel handles. This example manufactured 1960s by RY Møbler, stamped by maker. H. 79 cm. L. 200 cm. D. 49 cm.

*DKK 30,000 / € 4,050*

1107

FRITS SCHLEGEL

b. 1896, d. 1965

A polished brass table lamp with adjustable, conical shade. Base in the shape of a cross. Model B29. This example manufactured 1940s by Lyfa. H. 60 cm.

*Literature: Lyfa catalogue no. 1, 1946, referred to and ill. p. 206. DKK 15,000-20,000 / € 2,000-2,700*



1107

1108

FINN JUHL

b. Frederiksberg 1912, d. Ordrup 1989

"FJ 45". A teak easy chair. Sides, back and seat upholstered with grey wool, natural leather edgings. Designed 1945. This example made 1950s by cabinet-maker Niels Vodder.

*Provenance: Architect Knud Blach Petersen. DKK 40,000 / € 5,400*



1108



1109

1109 ©

FINN JUHL

b. Frederiksberg 1912, d. Ordrup 1989

"BO 69". Freestanding Brazilian rosewood desk with detachable fold-down leaf. Front with "floating" drawer section with two drawers and round brass handles. Anodized metal frame with tall Brazilian rosewood shoes. Designed 1953. This example manufactured 1950s by Bovirke. H. 75 cm. L. 170/224 cm. W. 85 cm.

*Litteratur: "Bygge og Bo", Hefte 1, Marts 1954.*

*DKK 80,000-100,000 / € 11,000-13,500*



**1110**  
**IB KOFOD-LARSEN**

b. 1921, d. 2003

"Sälen" (The Seal). A high back easy chair with teak frame. Seat, back and loose cushions upholstered with black leather. Model 800. This example manufactured approx. 1960 by OPE, Sweden with maker's label. Re-tailed by Illums Bolighus, with retailer's metal plaque.  
*Provenance: Bought at Illums Bolighus by present owner, approximately 1960. DKK 25,000 / € 3,350*



1110

**1111** ©  
**IB KOFOD-LARSEN**

b. 1921, d. 2003

"Elizabeth". A Brazilian rosewood stool. Seat cushion upholstered with black vinyl. Model U-56. Designed 1956. This example made early 1960s by Christensen & Larsen Cabinetmakers.

*Provenance: Composer Ursula Mamlok.*

*Model presented at The Copenhagen Cabinetmakers' Guild Exhibition at Designmuseum Danmark, 1958.*

*Literature: Grete Jalk [ed.]: "40 Years of Danish Furniture Design", vol. 3, p. 48-49.*

*DKK 18,000-20,000 / € 2,400-2,700*



1111



1112

**1112**  
**MOGENS KOCH**

b. Frederiksberg 1898, d. Copenhagen 1992

A pair of freestanding addition benches with mahogany frame. Seat and back upholstered with black leather, fitted with leather covered buttons. These examples made approx. 1978 by Rud. Rasmussen Cabinetmakers, with maker's paper label. (2)

*Label no. 37566.*

*DKK 40,000 / € 5,400*

**1113**  
**KURT ØSTERVIG**

b. 1912, d. 1986

Circular coffee table with solid teak frame and stretchers. Reversible teak top with black Formica on one side. This example made 1950-1960s by Jason. H. 53,5 cm. Diam. 100 cm. *DKK 20,000 / € 2,700*



1113



1114

1114 ©

EJNER LARSEN

b. 1917, d. 1987

AKSEL BENDER MADSEN

b. 1916, d. 2000

Circular Brazilian rosewood dining table with extension and three extra leaves, one of which foldable and placed underneath top. Model 1726. Designed 1955. This example made approx. 1960s by cabinetmaker Willy Beck, with maker's metal plaque. H. 73 cm. Diam. 130 cm. L. 280 cm.

*Model presented at The Copenhagen Cabinetmakers' Guild Exhibition at Designmuseum Danmark, 1955.*

*Literature: Grete Jalk [ed.]: "40 Years of Danish Furniture Design", vol. 3, p. 317.*

DKK 20,000 / € 2,700



1115

1115

HANS J. WEGNER

b. Tønder 1914, d. Gentofte 2007

"Cowhorn Chair". Set of four solid teak chairs, back with inlays. Seats upholstered with black leather. Model JH 505. Designed 1952. These examples made 1960s by cabinetmaker Johannes Hansen, with maker's metal plaque. (4)

*Model presented at The Copenhagen Cabinetmakers' Guild Exhibition at Designmuseum Danmark, 1952.*

*Literature: Grete Jalk [ed.], "40 Years of Danish Furniture Design", 1987, vol. 3, ill. pp. 212-213.*

DKK 60,000 / € 8,050









1116

1116

**POUL HENNINGSEN**

b. Ordrup 1894, d. Hillerød 1967

"PH-Septima 5". Pendant with socket house of nickel plated metal, marked "Pat. Appl.". Seven shades of amber coloured glass, alternate frosted fields. This example manufactured 1930s by Louis Poulsen. Diam. 49 cm.

*Literature: "Light Years Ahead", ill. and mentioned pp. 237-239.*

*DKK 125,000-150,000 / € 17,000-20,000*



1117

**1117**  
**FRITS HENNINGSEN**

b. 1889, d. 1965

Armchair with legs of black painted wood. Seat, back and armrests upholstered with patinated, brown coloured Niger leather, fitted with brass nails. Designed 1933. This example made 1930-1940s by cabinetmaker Frits Henningsen.

*Model presented at The Copenhagen Cabinetmakers' Guild Exhibition at Designmuseum Danmark, 1933.*

*Literature: Grete Jalk [ed.]: "40 Years of Danish Furniture Design", vol. 1, pp. 156-157.*

*DKK 10,000-15,000 / € 1,350-2,000*

**1118**  
**ERIK CHAMBERT**

b. 1902, d. 1988

Table mounted on carved frame of stained birch. Rectangular top of various woods, probably rosewood and mahogany, sides with profiles and inlay. This example manufactured approx. 1920-1930s by Chambert's Möbelfabrik, Sweden. H. 74,5 cm. L. 148 cm. W. 80 cm. *DKK 20,000 / € 2,700*



1118



1119

**1119**  
**FRITS HENNINGSEN**

b. 1889, d. 1965

Three mahogany stools with tapering legs and curved sides. Two seats upholstered with patinated Niger leather and one with greenish leather. These examples made 1930-1940s by cabinetmaker Frits Henningsen. H. 43 cm. (3) *DKK 25,000-30,000 / € 3,350-4,050*





1120

1120

**POUL HENNINGSEN**

b. Ordrup 1894, d. Hillerød 1967

"PH-2/2 Ring". Chandelier with ring, canopy and socket houses of browned metal. Three lights with amber coloured glass shades. This example manufactured 1930s by Louis Poulsen. Diam. 68 cm.

*DKK 25,000 / € 3,350*

1121

**KAARE KLINT**

b. Frederiksberg 1888, d. Copenhagen 1954

"The Red Chair". A set of six chairs with profiled mahogany frame. Seat and back upholstered with patinated, original Niger leather, fitted with brass nails. Model 39490. Designed 1930. These examples made approx. 1940s by Rud. Rasmussen Cabinet-makers, with maker's paper label. (6)

*KK labels indistinctly numbered.*

*Literature: Gorm Harkær, Klintiana: "Kaare Klint", vol. 2, ill. and mentioned pp. 82-84.*

*DKK 30,000-40,000 / € 4,050-5,400*



1121





1122

1122  
POUL HENNINGSEN

b. Ordrup 1894, d. Hillerød 1967

"PH-5/3". Floor lamp with brass frame on white painted circular base. Red/white zinc shades, socket house with cord switch. This example manufactured 1950-1960s by Louis Poulsen. H. 162 cm.

*DKK 50,000-60,000 / € 6,700-8,050*





1123

**KAARE KLINT**

b. Frederiksberg 1888, d. Copenhagen 1954

A pair of freestanding addition sofa units mounted on patinated oak legs. Sides, seat and back upholstered with patinated, original Niger leather, fitted with leather covered buttons. Model 4698. Designed 1933. These examples made 1960-1970s by Rud. Rasmussen Cabinetmakers, one with maker's paper label. L. 91 cm. (2)

*KK label no. 29263.*

*Literature: Gorm Harkær, Klintiana: "Kaare Klint", vol. 2, ill. and mentioned p. 94. DKK 80,000 / € 11,000*



1123







1124

1124

## FRITS HENNINGSEN

b. 1889, d. 1965

Two seater high back sofa with Cuban mahogany legs. Sides, seat, back and integrated armrests upholstered with patinated, original Niger leather. This example made approx. 1936-1940s by cabinetmaker Frits Henningsen. L. 150 cm.

*Model presented at The Copenhagen Cabinetmakers' Guild Exhibition at Designmuseum Danmark, 1936.*

*Literature: Grete Jalk [ed.]: "40 Years of Danish Furniture Design", vol. 1, p. 245.*

*DKK 200,000-250,000 / € 27,000-33,500*

1125

FRITS HENNINGSEN

b. 1889, d. 1965

High back wingchair with curving mahogany legs. Sides, seat and back upholstered with natural leather, back fitted with leather covered buttons. This example made 1960s by cabinetmaker Frits Henningsen.

*Literature: Bodil Busk Laursen, Søren Matz, Chr. Holmsted Olesen [ed.]: "Mesterværker 100 Aars Dansk Møbelsnedkeri", the Kulturbro Foundation, 2000, ill. and referred to p. 39. DKK 200,000 / € 27,000*





1125





1126

1126

FRITS HENNINGSEN

b. 1889, d. 1965

Set of nine Cuban mahogany chairs, back with vertical slats. Seats upholstered with patinated, original Niger leather, fitted with brass nails. These examples made approx. 1930s by cabinetmaker Frits Henningsen. (9)

*DKK 30,000 / € 4,050*



1127



1127

**IB KENNET OLSEN**

A mahogany and birch secretary in Chinese style, front divided into nine fields, fold-down writing leaf with bronze handle in the shape of a Buddha. Interior with nine small birch drawers, upper part with two hidden compartments. Made 1954 by cabinetmaker Arne Poulsen. H. 147,5 cm. W. 98 cm. D. 45./90 cm.

*Provenance: Cabinetmaker Arne Poulsen, hence by descent.*

*Made as apprenticeship test by cabinetmaker Arne Poulsen, Copenhagen. Apprenticeship test given praise, October 29th 1954. Signed by Oldermund, cabinetmaker A.J. Iversen and Chairman of the apprenticeship Commission in Copenhagen, cabinetmaker Johannes Hansen.*

*DKK 20,000-25,000 / € 2,700-3,350*





1128

**1128**  
**POUL HENNINGSEN**

b. Ordrup 1894, d. Hillerød 1967

"PH Grand Piano". Mignon type, seven octaves with frame of black stained wood and chromed steel. Sides covered with patinated Niger leather. Lyre and three curved legs of chromed steel. Lid and sheet holder of later red perspex, divided with chromed steel lists. Designed 1931. This example made approx. 1930s by Andreas Christensen. H. 94 cm. L. 147 cm. W. 149 cm.

*DKK 200,000-250,000 / € 27,000-33,500*



1129

**POUL KJÆRHOLM**

b. Østervrå 1929, d. Hillerød 1980

"PK 25". Lounge chair with stainless steel frame. Seat and back mounted with flag halyard. Designed 1951. This example manufactured 2007 by Fritz Hansen, with maker's label. *DKK 30,000 / € 4,050*

1130

**POUL KJÆRHOLM**

b. Østervrå 1929, d. Hillerød 1980

"PK 31/2". Freestanding two seater sofa with chromed steel frame. Sides, back and loose cushions in seat and back upholstered with patinated, original brown leather. Designed 1958. This example manufactured 1964 by E. Kold Christensen, stamped. L. 138 cm. *Provenance: Bought by present owner in 1964. Original receipt from E. Kold Christensen included.*

*DKK 25,000-30,000 / € 3,350-4,050*





1130



1131

**1131**  
**POUL KJÆRHOLM**

b. Østervrå 1929, d. Hillerød 1980

"PK 63". Rare coffee table with chromed steel frame. Rectangular top of flintrolled, white/grey marble. Designed 1968. This example manufactured 1970s by E. Kold Christensen. H. 31 cm. L. 180 cm. W. 60 cm. *DKK 50,000 / € 6,700*



1132

1132

**HANS J. WEGNER**

b. Tønder 1914, d. Gentofte 2007

"JH 701". Set of eight armchairs with chromed steel frame, oak back with wengé inlays. Seats upholstered with brown coloured leather. Designed 1965. These examples made 1960-1970s by cabinetmaker Johannes Hansen, with maker's metal plaque. (8) *Model presented on The Copenhagen Cabinetmakers Guild Exhibition at Designmuseum Danmark, 1965. Literature: Grete Jalk [ed.], "40 Years of Danish Furniture Design", 1987, vol. 4, pp. 300-303.*

DKK 30,000 / € 4,050

1133

**POUL KJÆRHOLM**

b. Østervrå 1929, d. Hillerød 1980

"PK 54". Dining table with cubus frame of chromed steel. Circular top of flintrolled, white/grey marble. Six-piece addition ring of solid maple with stand included. Designed 1963. This example manufactured 1995 by Fritz Hansen, with maker's label. H. 65 cm. Diam. 140/210 cm. (2)

*Literature: "Poul Kjærholm", Arkitektens Forlag, 1999, pp. 20-21, 112-115 and 179.*

*Literature: Frederik Sieck: "Dansk Møbelkunst", p. 151.*

DKK 40,000-50,000 / € 5,400-6,700



1133



115





1134

1134

JØRGEN LUND

b. 1946

OLE LARSEN

b. 1945

"BO-1711". A pair of easy chairs with stainless steel cross-frame. Seat, back and armrests with wicker work. Designed 1982. These examples manufactured 1980s by BO-EX. (2)

*Only few examples of this model were made.*

*DKK 30,000-40,000 / € 4,050-5,400*

1135

**POUL KJÆRHOLM**

b. Østervrå 1929, d. Hillerød 1980

"PK 11". Armchair with chromed steel frame and ash wood backrest. Seat upholstered with black leather. Designed 1957. This example manufactured 1970s by E. Kold Christensen, stamped by maker.

*DKK 20,000 / € 2,700*



1135

1136

**POUL KJÆRHOLM**

b. Østervrå 1929, d. Hillerød 1980

"PK 55". Work table with chromed steel frame. Rectangular ash top. Designed 1957. This example manufactured 1970s by E. Kold Christensen, stamped by maker. H. 68,5 cm. L. 180 cm. W. 90 cm.

*DKK 20,000 / € 2,700*



1136



1138

1137 ©

**OLE WANSCHER**

b. Frederiksberg 1903, d. Charlottenlund 1985

A pair of Brazilian rosewood armchairs. Seat upholstered with light blue wool. Designed 1958. These examples made 1960s by cabinetmaker A.J. Iversen. (2)

*Model presented at The Copenhagen Cabinetmakers' Guild Exhibition at Designmuseum Danmark, 1958.*

*Literature: Grete Jalk [ed.]: "40 Years of Danish Furniture Design", vol. 4, p. 57.*

DKK 20,000-25,000 / € 2,700-3,350

1138

**POUL HENNINGSEN**

b. Ordrup 1894, d. Hillerød 1967

"PH-Septima 5". Incomplete pendant with socket house of chromed metal, shades of clear and painted glass, alternate frosted fields. This example manufactured 1930s by Louis Poulsen. Diam. 49 cm.

*Literature: "Light Years Ahead", ill. and mentioned pp. 237-239. DKK 80,000-100,000 / € 11,000-13,500*



1137







1139 ©

**OLE WANSCHER**

b. Frederiksberg 1903, d. Charlottenlund 1985

Set of ten Brazilian rosewood armchairs. Seat and back upholstered with later cognac coloured leather. Designed 1946. These examples made 1950s by cabinetmaker A.J. Iversen, with maker's paper label. (10)

*Model presented at The Copenhagen Cabinetmakers' Guild Exhibition at Designmuseum Danmark, 1946.*

*Litteratur: Grete Jalk [ed.]: "40 years of Danish Furniture Design", vol. 2, p. 295 and vol 3, p. 19.*

*DKK 80,000-100,000 / € 11,000-13,500*



1139



1140



1140



1140





1141

1140

### KAARE KLINT

b. Frederiksberg 1888, d. Copenhagen 1954

A rare freestanding Cuban mahogany desk and matching "The Red Chair" armchair and chair. Seat and back upholstered with original, patinated Niger leather, fitted with brass nails. Model 47510 and 3758A. Designed 1930. Desk mounted on six profiled legs, front with one large drawer, sides with fold-down leaves. These examples made early 1930s by Rud. Rasmussen Cabinetmakers, chairs with maker's paper label. Desk: H. 74 cm. L. 123/210 cm. W. 70 cm. (3)

KK label no. 13123 and 12890.

Literature: Gorm Harkær, *Klintiana: "Kaare Klint"*, vol. 2, chair ill. and mentioned pp. 82-84.

DKK 40,000-50,000 / € 5,400-6,700

1141

### MÄRTA MÅÅS-FJETTERSTRÖM

b. 1873, d. 1941

"Vita Spetsporten" (The Gothic Portal). Handwoven wool pile carpet in "semi-flossa" technique. White geometric pattern in relief on light brown base. Signed monogram AB MMF. Designed 1934. This example made after 1941 by Märta Måås-Fjetterström AB, Sweden. 265 x 250 cm.

Literature: Tyra Lundgren: *"Märta Måås-Fjetterström och väv-verkstaden i Båstad"*, Stockholm 1968, ill. no. 42.

Literature: *"Märta Måås-Fjetterström: Märta flyger igen! 90 år med Märta Måås-Fjetterström"*, exhibition catalogue Liljevalchs konsthall, ill. and mentioned pp. 82-83.

DKK 100,000 / € 13,500





1142

1142

**HANS J. WEGNER**

b. Tønder 1914, d. Gentofte 2007

"RY 25". Rosewood sideboard with round, tapering legs. Front with tambour doors, behind which oak interior with trays and adjustable shelves. Steel handles. This example manufactured 1965 by RY Møbler, stamped by maker. H. 79 cm. L. 200 cm. D. 49 cm.

*DKK 20,000-25,000 / € 2,700-3,350*

1143

HANS J. WEGNER

b. Tønder 1914, d. Gentofte 2007

"The Flag Halyard Chair". Easy chair with original green lacquered steel frame with black plastic shoes. Chromed steel top with flag halyard. Matching headrest upholstered with brown coloured leather. Model GE 225. Designed 1950. This example manufactured 1960s by Getama.

*Model presented at The Arts & Crafts Spring Exhibition at Designmuseum Danmark, 1950.*

*DKK 40,000-50,000 / € 5,400-6,700*



1143



1144

**1144  
SWEDISH DESIGN**

Chandelier with six-armed, black lacquered frame with cylindrical, perforated white/black metal shades with brass fittings. This example made approx. 1940-1950s, Sweden. H. 90 cm. Diam. 51 cm.

*DKK 15,000 / € 2,000*

**1145  
VILHELM WOHLERT**

b. 1920, d. 2007

Teak dining room suite consisting of six chairs and a circular dining table with extension and three extra leaves. Seats upholstered with black leather. These examples made early 1960s by cabinetmaker Arne Poulsen. Table: H. 73,5 cm. Diam. 125 cm. Total L. 244 cm. (7)

*Provenance: Cabinetmaker Arne Poulsen, hence by descent.*

*The models were presented at The Copenhagen Cabinet-makers' Guild Exhibition at Designmuseum Danmark in 1958 and 1963.*

*Literature: Grete Jalk [ed.]: "40 Years of Danish Furniture Design", vol. 4, pp. 64-65 and p. 251.*

*DKK 80,000-100,000 / € 11,000-13,500*



1145







1146

**1146 ©**  
**KAJ WINDING**

b. 1904

Brazilian rosewood chest of drawers mounted on loose plinth. Front with 13 drawers in various sizes, carved handles and brass key holes. This example manufactured 1960-1970s by P. Jeppesen. H. 98 cm. D. 45,5 cm. L. 100 cm.

DKK 20,000-25,000 / € 2,700-3,350

**1147 ©**  
**HELGE VESTERGAARD**  
**JENSEN**

b. 1917, d. 1987

Rectangular Brazilian rosewood coffee table, mounted on sculptural Y-shaped legs. Designed 1955. This example made early 1960s by cabinet-maker Peder Pedersen. H. 51 cm. L. 150 cm. W. 50 cm. *Provenance: Composer Ursula Mamlok. Bought at Den Permanente, 1962.*

*Literature: Grete Jalk [ed.]: "40 Years of Danish Furniture Design", vol. 3, p. 343 and vol. 4, p. 247.*

DKK 15,000-20,000 / € 2,000-2,700



1147

1148 ©  
B E R N T

b. 1937

A pair of Brazilian rosewood stools. Seats with woven cane. Designed 1957. These examples made approx. 1975-1980 by cabinetmaker Wørts. H. 41 cm. W./L. 45 cm. (2)

*Model designed for Kunsthåndværkets Prisopgave 1957 and presented at The Copenhagen Cabinetmakers' Guild Exhibition at Designmuseum Danmark, 1958.*

*Literature: Grete Jalk [ed.]: "40 Years of Danish Furniture Design", vol. 4, p. 74-75.*

*Literature: Bernt and Arkitektens forlag [red.]: "Møbel & rum", ill. p. 188-189. DKK 25,000 / € 3,350*



1148



1149



1149

CARL DANGEL

"Blå liljan" (Blue Lily). Handwoven wool carpet in "rölakan" flat weave technique, blue center with white stylized flower and polychrome geometrical pattern. Signed monogram CD. This example made mid 20th century, Sweden. 247 x 177 cm.

DKK 15,000-20,000 / € 2,000-2,700

1150

TOVE KINDT-LARSEN

b. 1906, d. 1994

EDVARD KINDT-LARSEN

b. Frederiksberg 1901, d. Gentofte 1982

Easy chair mounted on round Cuban mahogany legs. Sides and back upholstered with light fabric, seat with brown fabric, back fitted with buttons. This example made 1940s by cabinetmaker Gustav Bertelsen.

*Model presented at The Copenhagen Cabinetmakers' Guild Exhibition at Designmuseum Danmark, 1938.*

*Literature: Grete Jalk [ed.]: "40 Years of Danish Furniture Design", vol. 2, ill. p. 39.*

DKK 60,000 / € 8,050



1150



## An Independent Artisan & Artist

The sense of the tangible and the fascination of the sensuality of wood set the course for the Danish cabinetmaker Peder Moos (1906-1991), right from his early youth. Even with his earliest work, an economical approach influenced his precise and accurate, delicate and soft hand movements. He created unique masterpieces with a soulful surplus. Instinctively or in accordance with a long archetypal design history he refined the legs' endings, created mosaics of different types of wood to praise the material's wealth, he stressed fixings with inlays and chased the movement to make the touch even more comfortable.

He was an eccentric character who lived in seclusion with his family in an attic in Copenhagen and in 1938 he decided to participate on his own in the Copenhagen Cabinetmakers Guild Exhibitions. This annual exhibition had already in 1926 established the bridge between the architect's design and the cabinetmaker's traditional skills. Moos regularly attended the exhibitions alone without taking notice of any current trends, and he became a part of the golden age of modern Danish furniture design against his will. The other cabinetmakers, whom he exhibited alongside until 1956, did not understand him and were sceptical of him. His furniture was bold and exquisite in their execution. A small table, which was exhibited in 1942 and today belongs to the collection of the Design Museum Danmark, displays all the features of the cabinetmaker's work. For instance, the warm tones of mahogany that are emphasized through the use of contrasting wedges of light wood, as well as the turned foot that becomes finer down towards the bottom, where it ends in a ball shape on the floor. The following year, he created a version in rosewood. From 1947 he exhibited models at the Guild in an increasingly poetic style. "His artistic value is undeniable, but what makes him unique is the close link between craft and art," architect Henning Helger emphasizes. Moos was an idealist in a materialistic society. His personal commitment has an exalted dimension. The fine and delicate details in the joints emphasize the structure's valuable aspect. In a stool from 1948 that we have up for auction, the embossed and simple form with two armrests leads one's thoughts to a curule chair with Scandinavian minimalist elegance. The types of wood are chosen carefully and adapted

with ingenuity, with inlays of fine bright lamellae (cat. no. 1151).

The technique dictated Moos' style. He developed his style through his experiments. Moos drew almost nothing. Three lines were sufficient for a project and only a few notes about the intention described the project. The wood and its qualities was his starting point – he analysed its strength and character. "The best material is solid wood, the quality of which can be felt with your hand, the next kind of wood should have a different colour than the first, but with the same density. Inlays, dowels and pins emphasize the form and technique. These different elements give the furniture life. " Prior to any piece, he crafted a prototype with an ordinary type of wood to ensure that the project was viable, and this prototype was often in compliance with the final model. The time required for these two pieces of furniture, explains why Moos' works are rare – as well as their price. He controlled the entire project, from design to manufacturing. He differed from his colleagues, who worked with drawings, by working directly on the workbench.

He was a free and unique original, who cared very little about commercial logic. He created each element as a painter or a sculptor, evaluated the colour of the elements, their contrast and volume. As his correspondence about the "Museum Table" testifies to, he became personally attached to each of the pieces of furniture he made. He even hesitated to sell them, which explains why he made so few pieces of furniture during his career. Luckily for his client Doctor Gert Poulsen, Moos did decide to part with the "Museum Table," which is now up for auction. The finishing in Moos' work, the final step in the process, is also significant. He polished the surface with finer and finer steel wool and moistened the surface between each polishing. The last treatment was to rub the surface with pine shavings, a rare technique that makes the surface incomparably velvety and with a shine reminiscent of silk. The furniture's surface has no stains or mistakes (cat. no. 1153).

From 1956 he devoted himself to teaching in order to support himself, and he shared his methods and his delicate approach with his students. In 1964

he taught at Tønder Seminar School and in 1968 he taught in his hometown of Bredebro – in the midst of the nature that he loved and which was the family's home. A shooting star on the firmament of Scandinavian design!

Anne Bony, August 2016

**Anne Bony (born in 1958):**

Author of several literary works about art, architecture and design published through French publishers such as Editions du regard and Editions Larousse. In addition, she has written numerous articles in various French magazines and journals such as *Connaissance des Arts*, *Maison Francaise* and *La Gazette Drouot*. Anne Bony teaches classes on Art Nouveau, Art Deco and Design at the French school IESA (Institut d'études supérieures des Arts) as well as contemporary design at the IFM (Institut Francais de la Mode).







1151







1151

1151 <sup>CD</sup> ©

**PEDER MOOS**

b. Nybøl 1906, d. 1991

Brazilian rosewood stool with tall, open sides. Numerous inlays and woven openwork seat of ash. Seat weave pinned with circular rosewood inlays, seat and sides inlaid with monogram. Signed Moos 1954. Designed 1948. This example made 1954 by cabinetmaker Peder Moos. H. 40,3/56,3 cm.

*Model presented at The Copenhagen Cabinetmakers' Guild Exhibition at Designmuseum Danmark, 1948.*

*Literature: Grete Jalk [ed.]: "40 Years of Danish Furniture Design", vol. 3, pp. 63, 65. DKK 500,000-750,000 / € 67,000-100,000*



1152 ©  
**PEDER MOOS**

b. Nybøl 1906, d. 1991

"A Little of Everything". A solid Brazilian rosewood wall/ceiling mounted lamp with boxwood inlays. Circular wall bracket with inlaid monogram and swivel for adjustable arm with pleated Le Klint paper shade. Signed monogram 1955. Designed 1947. This example made 1955 by cabinetmaker Peder Moos. L. 94 cm.

*Provenance: Present owner's grandmother, Charlotte Rud, who was a friend and neighbour of Peder Moos and matron at Den danske Husflidshøjskole in Kerteminde, where Moos started teaching in 1956.*

*This lamp comes from a family who was part of Moos' life since his early youth and who was closely connected to his other vocation - teaching.*

*Charlotte Rud's mother was Ingeborg Appel, teacher and later on matron at Askov Højskole, where Moos was a student before he commenced his education as a cabinetmaker.*

*Model presented at The Copenhagen Cabinetmakers' Guild Exhibition at Designmuseum Danmark, 1947.*

*Literature: Grete Jalk [ed.]: "40 Years of Danish Furniture Design", vol. 3, p. 24-25.*

*DKK 100,000-150,000 / € 13,500-20,000*





1152

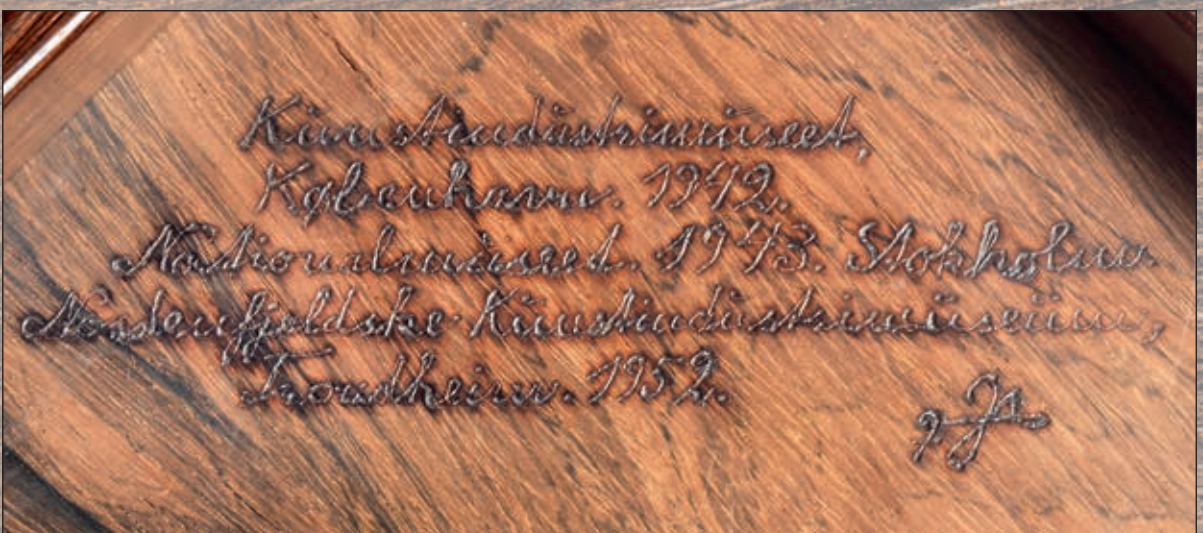




1153











1153

1153<sup>CD</sup> ©  
**PEDER MOOS**

b. Nybøl 1906, d. 1991

"Museum table". Rare coffee table of solid Brazilian rosewood with numerous boxwood inlays. Top inlaid with monogram. Mounted on tapering "drumstick" legs. Signed 1968 and where the model was exhibited in Copenhagen, Stockholm and Trondheim. This example made 1968 by cabinetmaker Peder Moos. H. 57 cm. L. 70,5 cm. W. 52,5 cm. *Correspondence between Peder Moos and the previous owner concerning the creation, payment and care of the table is included.*

*Model presented at The Copenhagen Cabinetmakers' Guild Exhibition at Designmuseum Danmark, 1942. The same model was exhibited at Nationalmuseet, Stockholm, Sweden in 1943 and at Nordenfjelske Kunstindustrimuseum, Trondheim, Norway in 1952.*

*Literature: Grete Jalk [ed.]: "40 Years of Danish Furniture Design", vol. 1, ill. pp. 176-177.*

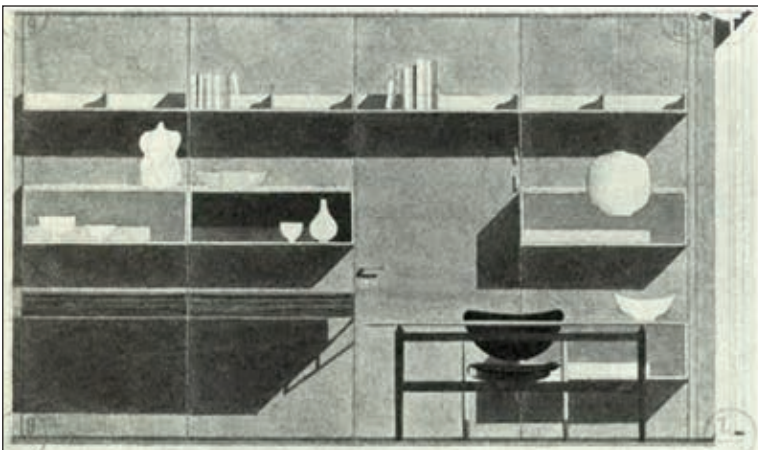
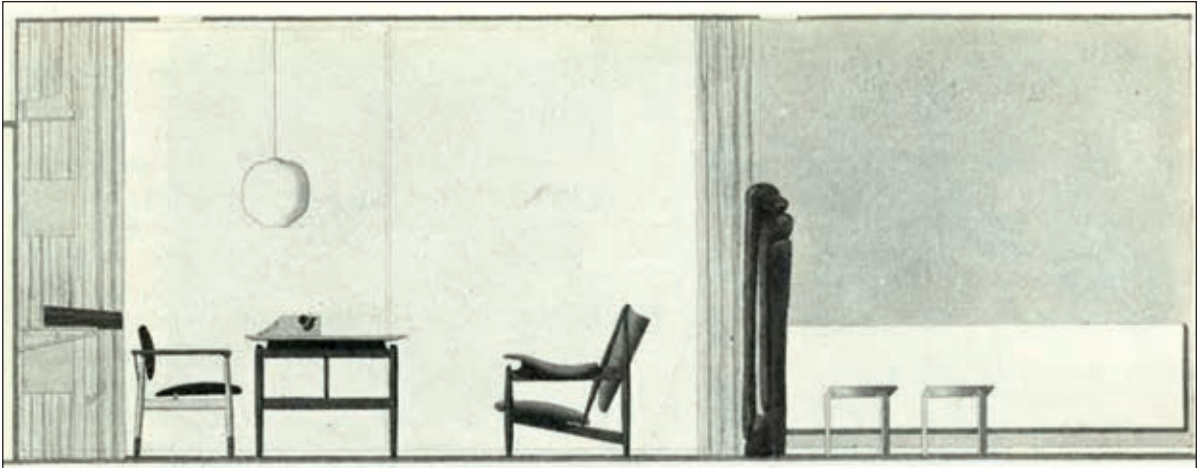
*Literature: "Architectural Review", November 1948, ill. and mentioned p. 250.*

*Literature: "Mesterværker: 100 års dansk møbelsnedkeri", model ill. in exhibition appendix p. 20.*

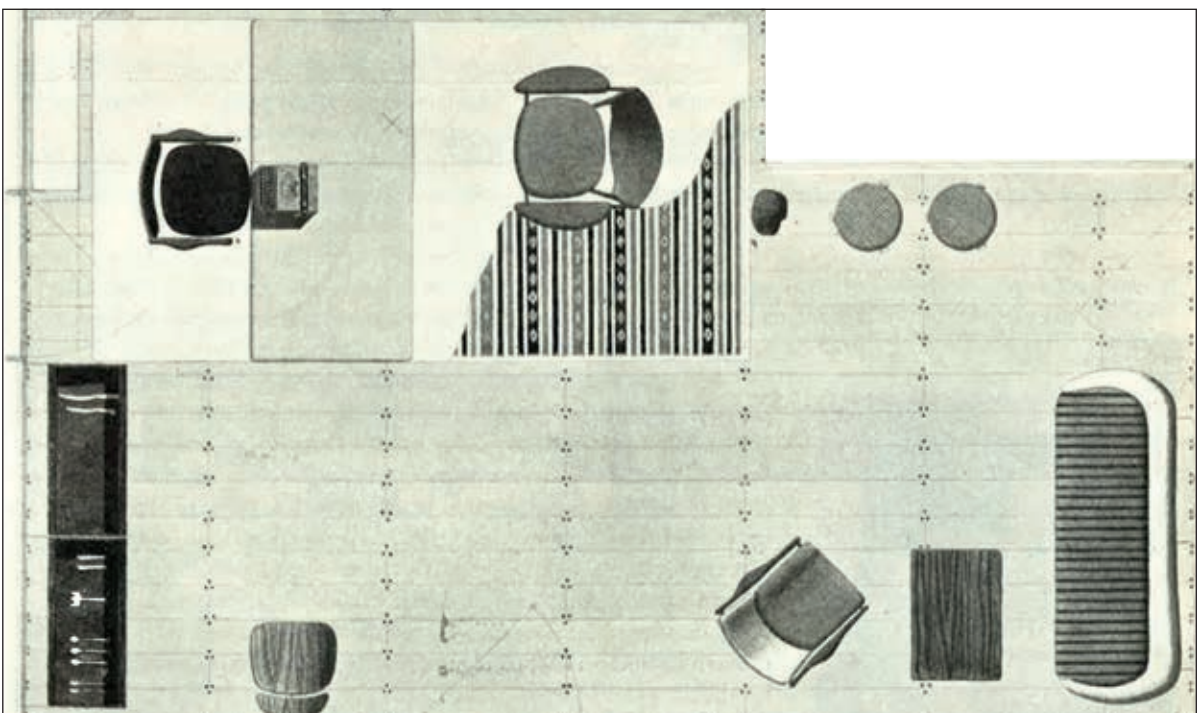
*Literature: "Peder Moos", Teknologisk Instituts Forlag, 1988, ill. pp. 34-35.*

DKK 300,000-400,000 / € 40,500-54,000





*Finn Juhl's sketchdrawings  
for the layout of the room*



## Interior 52

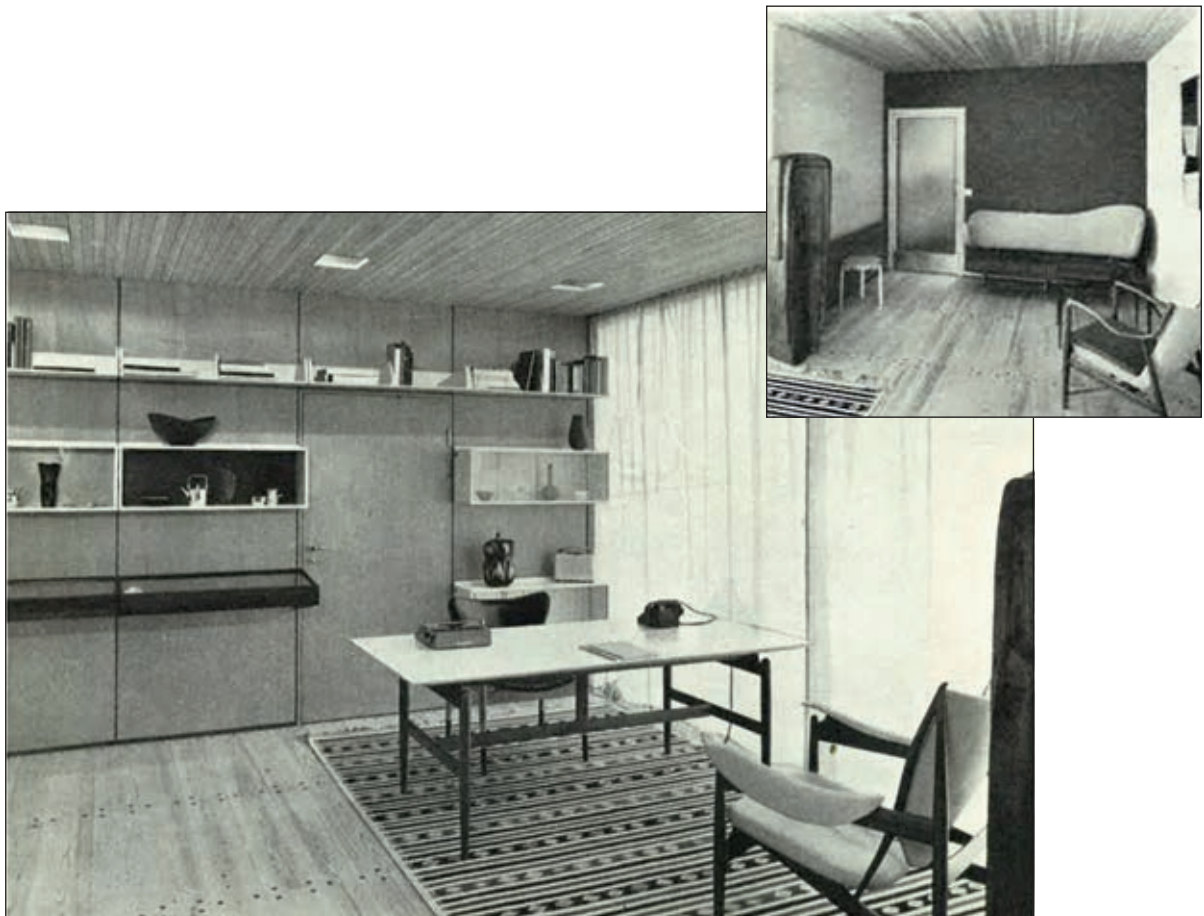
### *Nordenfjeldske Kunstindustrimuseum, Trondheim, Norway*

In February 1951 Finn Juhl was given the honourable task of designing a Danish interior at Nordenfjeldske Kunstindustrimuseum in Trondheim (Norway's National Museum of Decorative Arts and Design). The director of the museum, Thorvald Krohn-Hansen, wanted a room that could show the leading position that Danish decorative design had achieved in the world at the time. Finn Juhl took the task at hand very seriously and created an interior that was fully capable of representing a contemporary counterpoint to the unique room decorated by the Belgian Art Nouveau designer Henry van de Velde, which the museum already had.

Finn Juhl created an interior where the light, colours and surfaces interacted with the furniture pieces, of which he was a true champion. He decorated the room with a number of his own models, as well as the work from a few other designers, including – almost self-evidently – a museum table by Peder Moos. Interior 52 still exists as a part of the museum's permanent exhibitions – visit [www.nkim.no/en/interior-52](http://www.nkim.no/en/interior-52) if you want to take a closer look at the room. It is one of the best testimonies to Finn Juhl and Danish Modern in general.

At this auction we have the pleasure of being able to present a number of the models that Finn Juhl used for Interior 52. These models, combined with a few other similar pieces by Finn Juhl and models from a couple of other designers, have given us the opportunity to present an interior at our preview that seeks to recapture the mood of 1952.

The items constitute, along with Peder Moos' "Museum's Table", the following 12 auction lots.



1154

**FINN JUHL**

b. Frederiksberg 1912, d. Ordrup 1989

"Fireplace Chair". A pair of patinated teak easy chairs. Seat and back upholstered with original light grey wool, loose seat cushion upholstered with green wool, back fitted with buttons. Model BO 59. Designed 1946. These examples manufactured 1950s by Bovirke. (2)

*DKK 60,000-80,000 / € 8,050-11,000*



1154

1155

**FINN JUHL**

b. Frederiksberg 1912, d. Ordrup 1989

Freestanding two seater sofa mounted on round, tapering legs of beech. Sides and curvy back upholstered with original light grey wool, seat with green wool, back fitted with buttons. Designed 1946. This example manufactured 1950s by Bovirke. L. 133 cm. *DKK 40,000 / € 5,400*



1155



1156

**FINN JUHL**

b. Frederiksberg 1912, d. Ordrup 1989

A large solid teak bowl. Designed 1951. Made by Magne Mosen for Kay Bojesen. Not stamped. H. 17 cm. L. 36,5 cm. W. 34 cm.

*Literature: Esbjørn Hiort: "Finn Juhl", ill. pp. 124-128.*

*DKK 15,000-20,000 / € 2,000-2,700*



1156

1157

**FINN JUHL**

b. Frederiksberg 1912, d. Ordrup 1989

"FJ 45". A teak easy chair. Sides, back and loose seat cushion upholstered with light wool. Designed 1945. This example made 1950-1960s by cabinet-maker Niels Vodder, stamped by maker.

*DKK 50,000-75,000 / € 6,700-10,000*



1157

1158 ©

VILHELM WOHLERT

b. 1920, d. 2007

Chair with Brazilian rosewood frame. Seat upholstered with black leather. This example made approx. 1960 by cabinetmaker Arne Poulsen.

*Provenance: Cabinetmaker Arne Poulsen, hence by descent.*

*Model presented at The Copenhagen Cabinetmakers' Guild Exhibition at Designmuseum Danmark, 1958.*

*Literature: Grete Jalk [ed.]: "40 Years of Danish Furniture Design", vol. 4, p. 64-65.*

*DKK 10,000-15,000 / € 1,350-2,000*



1158



1159

1159 ©

EDVARD KINDT-LARSEN

b. Frederiksberg 1901, d. Gentofte 1982

TOVE KINDT-LARSEN

b. 1906, d. 1994

A Brazilian rosewood swivel chair with oblique, tapering legs. Seat and back upholstered with original black leather. Designed 1957. This example made 1960s by Thorald Madsen Cabinetmakers.

*Model presented at The Copenhagen Cabinetmakers' Guild Exhibition at Designmuseum Danmark, 1957.*

*Literature: Grete Jalk [ed.]: "40 Years of Danish Furniture Design", vol. 4, p. 25.*

DKK 20,000-30,000 / € 2,700-4,050



1160

1160

EDVARD KINDT-LARSEN

b. Frederiksberg 1901, d. Gentofte 1982

TOVE KINDT-LARSEN

b. 1906, d. 1994

A teak swivel chair with oblique, tapering legs. Seat and back upholstered with original black leather. Designed 1957. This example made 1960s by Thorald Madsen Cabinetmakers.

DKK 20,000-30,000 / € 2,700-4,050





1161



1161

VILHELM LAURITZEN

b. 1894, d. 1984

Chandelier with five-armed patinated brass frame, mounted with opal glass shades. This example manufactured 1950s by Louis Poulsen. H. 62 cm. Diam. 63 cm.

DKK 15,000-20,000 / € 2,000-2,700

1162 ©

FINN JUHL

b. Frederiksberg 1912, d. Ordrup 1989

"FJ 50". Desk with solid Brazilian rosewood frame, stretcher with brass inlays. "Floating" maple top with profiled edges. This example made 1950s by cabinet-maker Niels Vodder. H. 71 cm. L. 200 cm. W. 96 cm.

*Model presented at The Copenhagen Cabinetmakers' Guild Exhibition at Designmuseum Danmark, 1952.*

*Literature: Grete Jalk [ed.]: "40 Years of Danish Furniture Design", vol. 3, p. 232-233. DKK 60,000 / € 8,050*



1162



1163

1163 ©

FINN JUHL

b. Frederiksberg 1912, d. Ordrup 1989

Wall unit consisting of three Brazilian rosewood wall panels, 12 solid pine shelves and a Brazilian rosewood sideboard, front with two, resp. white and orange lacquered, sliding doors. Brass fittings. Designed 1953. This example manufactured 1950-1960s by Bovirke. Wall panels: H. 200 cm. W. 78 cm. Sideboard: H. 45 cm. W. 157 cm. D. 40 cm. Shelves: W. 78 cm. D. 22/28 cm.

DKK 30,000-40,000 / € 4,050-5,400

1164

MÄRTA MÅÅS-FJETTERSTRÖM

b. 1873, d. 1941

"Ängarna" (Meadows). Handwoven wool pile carpet in "flossa" technique. Signed monogram AB MMF. Designed 1928. This example made after 1941 by Märta Måås-Fjetterström AB, Sweden. 248 x 211 cm. *Literature: "Märta Måås-Fjetterström: Märta flyger igen! 90 år med Märta Måås-Fjetterström", exhibition catalogue Liljevalchs konsthall, ill. p. 113.*

DKK 80,000-100,000 / € 11,000-13,500





1164



1165

FINN JUHL

b. Frederiksberg 1912, d. Ordrup 1989

"Chieftain Chair". A teak easy chair. Seat, armrests and back upholstered with black leather, back fitted with buttons. Designed 1949. This example made early 1960s by cabinetmaker Niels Vodder, stamped by maker.

*Proveniensi:* Bought by present owner's father early 1960s.

DKK 500,000 / € 67,000



1165





1166

1166

HANNE KJÆRHOLM

b. 1930, d. 2009

"Box of Beauty". Vanity table with reversible brushed steel frame for sitting or standing use. Black high gloss painted box with fold-up mirror, mahogany interior with storage compartments. Sides with two small drawers. Loose mahogany shelf/table top. Model EP 12. Made approx. 2004 by cabinetmakers Søren Risvang and Einar Pedersen. Box: H. 24 cm. W./D. 48 cm. Frame: H. 93,5 cm. W. 50 cm. D. 48 cm. *The "Box of Beauty" was designed for The Danish Furniture Fair's competition in 2004, where it won first prize. Signed and numbered by the designer and the cabinetmakers, no. 2/50. DKK 25,000 / € 3,350*

1167

ARNE JACOBSEN

b. Copenhagen 1902, d. s.p. 1971

"The Egg Chair". Easy chair and matching stool with profiled aluminum base. Sides, back, loose seat cushion and stool upholstered with original, patinated black leather. Model 3317 and 3127. Designed 1958. These examples manufactured late 1970s by Fritz Hansen, stool with maker's paper label dated 1979. (2) DKK 30,000-40,000 / € 4,050-5,400



1167

1168  
ARNE JACOBSEN

b. Copenhagen 1902, d. s.p. 1971

Coffee table with chromed steel frame and rectangular rosewood top. Model 3501. This example manufactured 1960s by Fritz Hansen. H. 48,5 cm. L. 150 cm. W. 64 cm.

*Literature: Mobilia no. 35-36, 1958, p. 46.*

*DKK 10,000-12,000 / € 1,350-1,600*



1168





1169



1170

1169

**POUL HENNINGSEN**

b. Ordrup 1894, d. Hillerød 1967

"PH-1/1 Cascade". Two-level browned brass 16-armed chandelier, brown bakelite socket houses with frosted glass shades. This example manufactured 1933-1940 by Louis Poulsen. H. 170 cm. Diam. 102 cm.

DKK 50,000 / € 6,700

1170

**POUL KJÆRHOLM**

b. Østervrå 1929, d. Hillerød 1980

"PK 54". Dining table with cubus frame of chromed steel. Circular top of flintrolled, white/grey marble. Manufactured approx. 1970 by E. Kold Christensen, stamped by maker. H. 65 cm. Diam. 140 cm.

*Literature: "Poul Kjærholm", Arkitektens Forlag, 1999, pp. 20-21, 112-115 and 179.*

*Literature: Frederik Sieck: "Dansk Møbelkunst", p. 151.*

DKK 50,000 / € 6,700



1171

1171

**KURT ØSTERVIG**

b. 1912, d. 1986

Long side table/bench mounted on eight legged frame of black lacquered metal with oak shoes. Top of black Formica with oak rim. This example manufactured approx. 1950s by Jason. H. 41 cm. W. 40 cm. L. 335 cm.

DKK 25,000-30,000 / € 3,350-4,050



1172

1172

**POUL KJÆRHOLM**

b. Østervrå 1929, d. Hillerød 1980

"PK 31/1". Easy chair with chromed steel frame. Sides, back and loose cushions in seat and back upholstered with patinated, original black leather. Designed 1958. This example manufactured 1960s by E. Kold Christensen, stamped by maker.

*DKK 15,000-20,000 / € 2,000-2,700*

1173

**POUL KJÆRHOLM**

b. Østervrå 1929, d. Hillerød 1980

"PK 31/2". Freestanding two seater sofa with chromed steel frame. Sides, back and loose cushions in seat and back upholstered with original black leather. Designed 1958. This example manufactured approx. 1960s by E. Kold Christensen, stamped by maker. L. 138 cm.

*DKK 25,000-30,000 / € 3,350-4,050*



1173



1174

**1174**  
**POUL KJÆRHOLM**

b. Østervrå 1929, d. Hillerød 1980

"PK 31/2". Freestanding two seater sofa with chromed steel frame. Sides, back and loose cushions in seat and back upholstered with original black leather. Designed 1958. This example manufactured approx. 1960s by E. Kold Christensen, stamped by maker. L. 138 cm.

*DKK 25,000-30,000 / € 3,350-4,050*

**1175**  
**FLORENCE KNOLL**

b. Michigan 1917

Three coffee tables with black lacquered metal frames. Square top of resp. mahogany, red and white Formica. Model 579-070 and 579-071. These examples manufactured resp. 1960 and 1963 for Knoll International by NK (Nordiska Kompagniet), Sweden with maker's metal plaque. White: H. 45 cm. L./W. 81 cm. Red and mahogany: H. 45 cm. L./W. 61 cm. (3)

*DKK 20,000 / € 2,700*



1175



1176

**POUL KJÆRHOLM**

b. Østervrå 1929, d. Hillerød 1980

"PK 61". Square coffee table with chromed steel frame. Top of Porsgrunn marble with fossils. Designed 1956. This example manufactured 1960's by E. Kold Christensen, stamped by maker. H. 33 cm. W./L. 80 cm. DKK 80,000-100,000 / € 11,000-13,500



1177

**POUL KJÆRHOLM**

b. Østervrå 1929, d. Hillerød 1980

"PK 80". Daybed with chromed steel frame, board of grey painted wood. Loose mattress upholstered with original black leather fitted with buttons, leather stamped monogram IS. Designed 1957. This example manufactured early 1980s by E. Kold Christensen. L. 190 cm.

*Provenance: Upholsterer Ivan Schlechter.*

*Ivan Schlechter worked for E. Kold Christensen as an upholsterer and worked closely together with Poul Kjærholm. When Fritz Hansen took over the production and sale from E. Kold Christensen in 1982, this present mattress was used as an example of how the mattresses were to be made and stitched together. This mattress is embossed on the reverse with the owner's initials "I.S." DKK 100,000 / € 13,500*





1176



1177



1178

**1178**  
**JØRGEN BO**

b. 1919, d. 1999

"Hebe lamp". A pair of pendants. White painted metal shades and frosted glass cylinders with brass mounting. Type no. 16586. Designed 1967. These examples manufactured 1960s by Louis Poulsen. Diam. 60 cm. (2)

*DKK 15,000-20,000 / € 2,000-2,700*



1179

1180

PHILIPPE STARCK

b. Paris 1949

"Illusion Table". Dining table with iron frame. Rectangular top of moulded glass. Corners of frame with brass plaques stamped resp. STARCK, FIAM and 24. Designed 1992. This example manufactured 1990s by FIAM, Italy. H. 75 cm. L. approx. 205 cm. W. approx. 107 cm. *DKK 40,000 / € 5,400*



1180

1179

ANNE - METTE JENSEN  
& MORTEN ERNST

"Waves". Large, sculptural chaise longue with frame of black lacquered fibre glass, upholstered with black leather. Model 142. Manufactured by Erik Jørgensen. H. 55 cm. W. 145 cm. L. 200 cm.

*"Waves" was the winner of the first Erik Jørgensen design competition in 1994 on the occasion of the company's 40 year anniversary.*

*DKK 20,000-30,000 / € 2,700-4,050*





1181

**1181**  
**ARNE JACOBSEN**

b. Copenhagen 1902, d. s.p. 1971

"AJ". A pair of floor lamps. Grey lacquered metal frame with sand coloured canvas shade. These examples manufactured 1960s by Louis Poulsen. H. 183 cm. (2) Model designed for the SAS Royal Hotel, Copenhagen. Literature: Carsten Thau & Kjeld Vindum: "Arne Jacobsen", 1998, described p. 439, ill. pp. 436, 438-439.

DKK 30,000 / € 4,050

**1182**  
**GIO PONTI**

b. Milano 1891, d. s.p. 1979

A pair of lounge chairs with round, tapering legs of stained beech. Sides, seat and back upholstered with later blue wool. Model 803. Designed 1954. These examples manufactured early 1960s by Cassina, Italy, retailed by Illums Bolighus. (2)

Provenance: Bought by present owner at Illums Bolighus 1963. DKK 30,000-40,000 / € 4,050-5,400



1182

**1183**  
**ERNST KÜHN**

b. 1890, d. 1948

Rectangular mahogany coffee table, frame with shoes and cross fittings of brass. This example manufactured 1940s by Lysberg, Hansen & Terp, with maker's metal plaque. H. 50 cm. W. 53 cm. L. 130 cm.

*DKK 20,000 / € 2,700*



1183



1184

1184 ©

**FINN JUHL**

b. Frederiksberg 1912, d. Ordrup 1989

"BO 98". A beech easy chair, armrests with Brazilian rosewood inlays. Seat, back and loose seat cushion upholstered with dark blue wool, back fitted with buttons. Designed 1952. This example manufactured 1950s by Bovirke.

*Litteratur: Dansk Kunsthåndværk, nr. 5, 1952.*

*Litteratur: Noritsugu Oda. "Finn Juhl", Corona Books, s. 58.*

*Litteratur: Noritsugu Oda, "Danish Chairs", 1999, s. 96.*

DKK 30,000 / € 4,050

1185

**SWEDISH DESIGN**

Low easy chair with three beech legs. Triangular seat and round back upholstered with light grey fabric, loose seat cushion with dark grey fabric. This example made 1950s, Sweden.

DKK 15,000-20,000 / € 2,000-2,700

1186

**SWEDISH DESIGN**

Handwoven wool carpet in "rölakan" flat weave technique, square pattern in shades of blue, grey, orange and yellow. Signed monogram CV (probably Carlanders Väveri). Probably made mid 20th century by Carlander's Väveri, Skultorp, Sweden. 308 x 195 cm.

DKK 30,000 / € 4,050



1185



1186





1187



1188



1187

**ERIK WØRTS**

b. København 1916, d. Herlev 1997

Tall teak dresser, front with six large drawers and four smaller drawers with carved, round handles. This example made early 1960s by cabinetmaker Wørts. H. 135 cm. W. 89,5 cm. D. 47,5 cm.

*Provenance: Composer Ursula Mamlok. Bought at Den Permanente, 1962.*

DKK 20,000-25,000 / € 2,700-3,350

1188

**ERIK WØRTS**

b. København 1916, d. Herlev 1997

Low teak dresser, front with eight drawers with carved, round handles. This example made early 1960s by cabinetmaker Wørts. H. 85 cm. D. 47,5 cm. W. 145 cm.

*Provenance: Composer Ursula Mamlok. Bought at Den Permanente, 1962.*

DKK 20,000-25,000 / € 2,700-3,350

1189

1189

**ERIK WØRTS**

b. København 1916, d. Herlev 1997

Combined desk and dining table of teak with detachable drawer section, front with two drawers with round, carved rosewood handles. Two extension leaves underneath top, brass fittings. Designed 1954. This example made 1950s by cabinetmaker Wørts. H 73,5 cm. W. 92 cm. L. 158./250 cm.

*Literature: Esbjørn Hiort: "Modern Danish Furniture", 1956, ill. and mentioned pp. 108-109.*

DKK 20,000 / € 2,700



1190

**1190**  
**TOVE KINDT-LARSEN**

b. 1906, d. 1994, b. Frederiksberg 1901

**EDVARD KINDT-LARSEN**

d. Gentofte 1982

A patinated oak swivel chair with oblique, tapering legs. Seat and back upholstered with original green leather. Designed 1957. This example made 1960s by Thorald Madsen Cabinetmakers, with maker's metal plaque.

*Model presented at The Copenhagen Cabinetmakers' Guild Exhibition at Designmuseum Danmark, 1957.*

*Literature: Grete Jalk [ed.]: "40 Years of Danish Furniture Design", vol. 4, p. 25.*

DKK 15,000-20,000 / € 2,000-2,700

**1191**  
**SWEDISH DESIGN**

Handwoven wool runner in "rölakan" flat weave technique, greyish brown base with red, yellow and green rectangles and blue stripes. Unsigned. This example made mid 20th century, Sweden. 340 x 89 cm.

DKK 15,000 / € 2,000



1191



1192

FOLKE JANSSON

"Tellus". Freestanding two seater sofa and matching easy chair with tapering "drumstick" legs of stained beech. Sides, back and loose seat cushions upholstered with yellow wool. Designed 1956. These examples manufactured late 1950-1960s by S.M. Wincrantz, Sweden. Sofa: L. 162 cm. (2)

*DKK 25,000-30,000 / € 3,350-4,050*



1192







1193

**1193**  
**KURT ØSTERVIG**

b. 1912, d. 1986

**CARL MADSEN**

Tall cabinet of patinated oak mounted on round, tapering legs. Front with two oak drawers and four teak doors, behind which adjustable shelves. Top with raised edges, brass fittings. This example made 1950s by K. Knudsen & Søn. H. 152 cm. W. 112 cm. D. 45 cm. *DKK 20,000 / € 2,700*

**1194**  
**ORLA MØLGAARD-NIELSEN**

b. Ålborg 1907, d. Hellerup 1993

**PETER HVIDT**

b. Copenhagen 1916, d. s.p. 1986

"Boomerang Chair". A pair of teak lounge chairs with brass legs. Loose cushions in seat and back upholstered with resp. dark grey and purple Savak wool. Model FD 134. Designed 1956. These examples manufactured approx. 1960 by France & Daverkosen, stamped by maker. (2)

*Provenance: Bought 1960, hence by descent in the family. Copy of original receipt included.*

*DKK 15,000-20,000 / € 2,000-2,700*



1194

1195

TOVE KINDT-LARSEN

b. 1906, d. 1994, b. Frederiksberg 1901

EDVARD KINDT-LARSEN

d. Gentofte 1982

A teak swivel chair with oblique, tapering legs. Seat and back upholstered with later grey fabric. Designed 1957. This example made early 1960s by Thorald Madsen Cabinetmakers, with maker's metal plaque.

*Provenance: Composer Ursula Mamlok. Bought at Den Permanente, 1962.*

*Model presented at The Copenhagen Cabinetmakers' Guild Exhibition at Designmuseum Danmark, 1957.*

*Literature: Grete Jalk [ed.]: "40 Years of Danish Furniture Design", vol. 4, p. 25. DKK 20,000-25,000 / € 2,700-3,350*



1195

1196

TOVE KINDT-LARSEN

b. 1906, d. 1994, b. Frederiksberg 1901

EDVARD KINDT-LARSEN

d. Gentofte 1982

Freestanding teak desk mounted on tapering legs. Front with three drawers, top with raised sides. This example made early 1960s by Thorald Madsen Cabinetmakers, with maker's metal plaque. H. 71,5./73 cm. W. 75 cm. L. 120 cm.

*Provenance: Composer Ursula Mamlok. Bought at Den Permanente, 1962. DKK 20,000 / € 2,700*



1196



1197

**1197**  
**BØRGE MOGENSEN**

b. Aalborg 1914, d. Gentofte 1972

"Øresund". A pair of oak sideboards and a matching chest of drawers with eight drawers in front. Cabinet interior with adjustable shelves. Runner legs, sliding doors and drawer fronts of teak. Flat, wide stretchers of polished brass. Designed 1955. These examples manufactured 1960s by Karl Andersson & Söner, stamped by maker. Each: H. 83,5 cm. D. 46 cm. L. 134 cm. (3)

*DKK 20,000-30,000 / € 2,700-4,050*



1199



1198

**1198**  
**HANS J. WEGNER**

b. Tønder 1914, d. Gentofte 2007

“Peacock Chair”. A pair of easy chairs with ash frame and teak armrests. Seats with woven paper cord. Model JH 550. Designed 1947. These examples made approx. 1980s by cabinetmaker Johannes Hansen. (2)

*Model presented at The Copenhagen Cabinetmakers' Guild Exhibition at Designmuseum Danmark, 1947.*

*Literature: Grete Jalk [ed.], “40 Years of Danish Furniture Design” 1987, vol. 3, pp. 14–17.*

*DKK 40,000–50,000 / € 5,400–6,700*



**1199**  
**TOVE KINDT-LARSEN**

b. 1906, d. 1994, b. Frederiksberg 1901

**EDVARD KINDT-LARSEN**

d. Gentofte 1982

Long, solid oak side table/bench, mounted on six-legged frame. Top with raised sides. This example manufactured 1960s by Säffle Möbelfabrik, Sweden. H. 41 cm. L. 273 cm. W. 43 cm.

*DKK 25,000–30,000 / € 3,350–4,050*



1200

**HANS J. WEGNER**

b. Tønder 1914, d. Gentofte 2007

Rare oak table mirror. Designed 1951. This example made approx. 1970s by cabinetmaker Johannes Hansen, stamped. H. 40,5 cm. W. 25,5 cm. D. 24,5 cm.  
*Literature: Bygge og Bo, Spring 1952.*

DKK 12,000-15,000 / € 1,600-2,000



1200

1201

**HANS J. WEGNER**

b. Tønder 1914, d. Gentofte 2007

"CH 304". A teak sideboard with cross-leg frame of beech with brass stretchers. Front with six drawers and two sliding doors. Interior with trays and adjustable shelves. Designed 1950. This example manufactured 1950-1960s by Carl Hansen & Søn. H. 126 cm. D. 45 cm. L. 168 cm.

*Presented at the exhibition "Købestævnet" in Fredericia, 1950.*

*Literature: Dansk Kunsthåndværk no. 11, 1950, p. 195, and no. 1, 1953. DKK 20,000-25,000 / € 2,700-3,350*



1201

1202

HANS J. WEGNER

b. Tønder 1914, d. Gentofte 2007

"The Flag Halyard Chair". Easy chair with original green lacquered steel frame with wooden shoes. Chromed steel top with flag halyard. Matching headrest upholstered with orange fabric. Model GE 225. Designed 1950. This example manufactured 1950s by Getama.

*The first versions of the flag halyard chair from 1950s were fitted with wooden shoes, later productions with shoes of black rubber or black plastic.*

*Model presented at The Arts & Crafts Spring Exhibition at Designmuseum Danmark, 1950.*

*DKK 60,000-80,000 / € 8,050-11,000*



1202



1203

1203

HANS J. WEGNER

b. Tønder 1914, d. Gentofte 2007

"Cowhorn Chair". Set of four solid oak chairs, back with inlays. Seats with woven cane. Model JH 505. Designed 1952. These examples made 1970s by cabinetmaker Johannes Hansen. (4)

*Provenance: Bought by present owner at cabinetmaker Johannes Hansen, 1975. Copy of the original receipt included.*

*Model presented at The Copenhagen Cabinetmakers' Guild Exhibition at Designmuseum Danmark, 1952.*

*Literature: Grete Jalk [ed.], "40 Years of Danish Furniture Design", 1987, vol. 3, ill. pp. 212-213. DKK 125,000 / € 17,000*







1204

1204

**ARNE JACOBSEN**

b. Copenhagen 1902, d. s.p. 1971

**HANS J. WEGNER**

b. Tønder 1914, d. Gentofte 2007

"Aarhus City Hall". A desk lamp with original white lacquered adjustable shade and base, adjustable brass stem and foot, white bakelite push button switch. Designed 1938-1941. This example manufactured approx. 1940s by Louis Poulsen. H. 35 cm. W. 22 cm.

*Provenance: Aarhus City Hall, 1940s.*

*Literature: Planmøbel catalogue app. 1943. ill.*

*Jens Lindhe [ed.], "Aarhus City Hall," Arkitektens Forlag 1991, p. 50. Technical drawing of a different lamp with the same foot.*

*Felix Solaguren - Beascoa, Arne Jacobsen, Santa & Cole, Spain. p. 66.*

*Nyborg Library's website*                      *DKK 30,000 / € 4,050*

1205

**HANS J. WEGNER**

b. Tønder 1914, d. Gentofte 2007

"China chair". A set of six cherry armchairs. A total of 12 loose seat cushions included, upholstered with patinated natural leather, fitted with buttons. Model 4283. Designed 1944. These examples manufactured 1988 by Fritz Hansen, with maker's label. (6)                      *DKK 60,000-80,000 / € 8,050-11,000*

1206

**HANS J. WEGNER**

b. Tønder 1914, d. Gentofte 2007

"RY 26". Oak sideboard with rosewood shoes. Front with two sliding doors with woven cane, behind which oak interior with trays and adjustable shelves. This example manufactured 1960s by RY Møbler, stamped by maker. H. 79 cm. W. 200 cm. D. 49 cm.

*DKK 25,000 / € 3,350*



1205



1206



1207

1207

**JØRGEN DITZEL**

b. Frederiksberg 1921, d. Copenhagen 1961

**NANNA DITZEL**

b. Copenhagen 1923, d. s.p. 2005

"AP 8". Rare three seater sofa with curvy armrests and stained beech legs. Sides, seat and back upholstered with original light brown wool, back fitted with buttons. Designed approx. 1952. This example made 1950s by AP Stolen. L. 198 cm.

*Literature: The magazine "Bygge og Bo", no. 4. Winter 1952-1953, p. 34.*

*Illums Bolighus catalogue approx. 1960, p. 42.*

*A.P. Stolen catalogue 1954.*

DKK 15,000 / € 2,000



1208

1209

**ACTON SCHUBELL  
& IB MADSEN**

A pair of high back easy chairs with teak frames. Seat, back and loose seat cushion upholstered with sheepskin, back fitted with leather covered buttons. These examples manufactured 1950s by Schubell & Madsen. (2)

*DKK 40,000-50,000 / € 5,400-6,700*



1209

1208

**SWEDISH DESIGN**

Handwoven wool carpet in “rölakan” flat weave technique, geo-metrical pattern and stripes in shades of creme, brown and grey. Signed L (Lövbergs vävatelje). This example made approx. 1955 by Lövbergs vävatelje, Mjölby, Sweden. 250 x 210 cm.

*DKK 40,000 / € 5,400*





1210

1210  
SWEDISH DESIGN

Handwoven wool carpet in "rölakan" flat weave technique. Unsigned. Pattern probably made after Märta Måås-Fjetterström's "Dukater". This example made approx. 1950-1960s, Sweden. 315 x 200 cm.

*DKK 50,000 / € 6,700*

1211

VILHELM LAURITZEN

b. 1894, d. 1984

Bench with chromed steel tube frame. Seat of solid lacquered teak with raised back. Designed and made 1936-1937. H. 50 cm. D. 42 cm. L. 111 cm.

*Provenance: Gladsaxe City Hall.*

*The model was designed for Gladsaxe City Hall and also used at the Danish Embassy in Washington DC.*

*Literature: Lisbeth Balslev Jørgensen a.o.: "Vilhelm Lauritzen- En moderne arkitekt", 1994, ill. p. 73.*

*DKK 25,000-40,000 / € 3,350-5,400*



1211

1212

VILHELM LAURITZEN

b. 1894, d. 1984

Bench with chromed steel tube frame. Seat of solid lacquered teak with raised back. Designed and made 1936-1937. H. 50 cm. D. 42 cm. L. 111 cm.

*Provenance: Gladsaxe City Hall.*

*The model was designed for Gladsaxe City Hall and also used at the Danish Embassy in Washington DC.*

*Literature: Lisbeth Balslev Jørgensen a.o.: "Vilhelm Lauritzen- En moderne arkitekt", 1994, ill. p. 73.*

*DKK 25,000-40,000 / € 3,350-5,400*



1212



1213

1213 ©  
**SEVERIN HANSEN JR.**

Denmark, 20th century

Freestanding Brazilian rosewood desk with tapering legs. Front with four drawers in rail. This example manufactured approx. 1960s by Haslev møbelsnedkeri. H. 74 cm. W. 75 cm. L. 143 cm.

*DKK 20,000-25,000 / € 2,700-3,350*

1214  
**AXEL EINAR HJORTH**

b. 1888, d. 1959

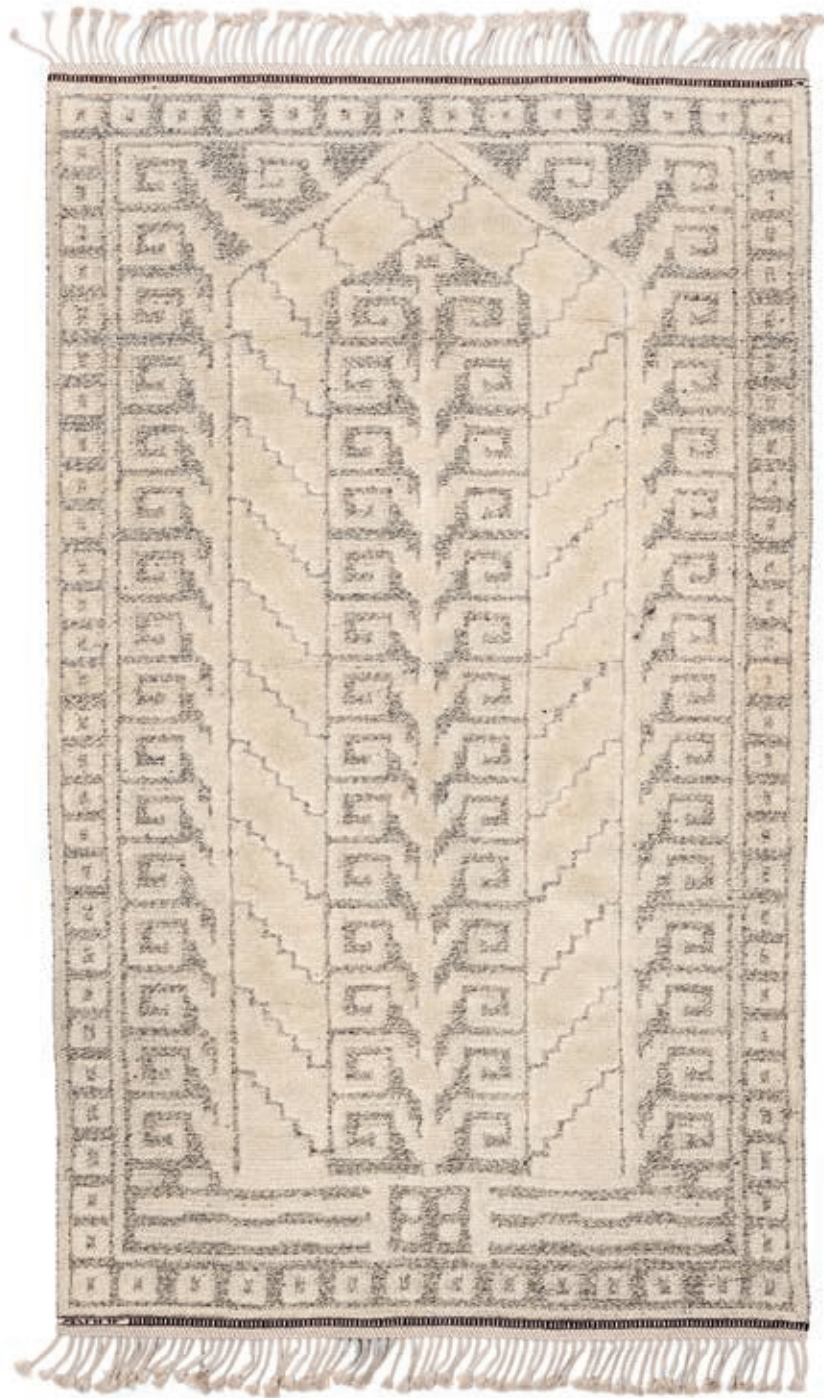
"OK". Sideboard of elm with rounded corners and horizontal applications of Macassar, mounted on tapering, stained elm legs. Front with three doors, interior with trays and shelves, circular pewter handles. Designed 1937. This example manufactured approx. 1937-1940 for NK (Nordiska Kompaniet), Sweden. H. 88 cm. L. 140 cm. D. 48 cm.

*DKK 20,000 / € 2,700*



1214





1215

1215

**MÄRTA MÅÅS-FJETTERSTRÖM**

b. 1873, d. 1941

"Vita Spetsporten" (The Gothic Portal). Handwoven wool pile carpet in "semi-flossa" technique. White geometric pattern in relief on light brown base. Signed monogram AB MMF. Designed 1934. This example made after 1941 by Märta Måås-Fjetterström AB, Sweden. 227 x 134 cm.

*Literature: Tyra Lundgren: "Märta Måås-Fjetterström och väv-verkstaden i Båstad", Stockholm 1968, ill. no. 42.*

*"Märta Måås-Fjetterström: Märta flyger igen! 90 år med Märta Måås-Fjetterström", exhibition catalogue Liljevalchs konsthall, ill. and mentioned pp. 82-83.*

*DKK 40,000-50,000 / € 5,400-6,700*





1216



1217

1216

VILHELM LAURITZEN

b. 1894, d. 1984

A pair of easy chairs with mahogany frame. Seat and back upholstered with striped green/blue plush. Designed 1929. These examples made approx. 1930s, probably by cabinetmaker Jacob Kjær. (2)

*Literature: "Vilhelm Lauritzen. En moderne arkitekt", Bergiafonden - Aristo 1994, model ill. p. 39.*

*Jacob Kjær made furniture for Vilhelm Lauritzen in connection with special interior assignments in the 1930s.*

DKK 20,000 / € 2,700



1218

1217

MÄRTA MÅÅS-FJETTERSTRÖM

b. 1873, d. 1941

"Rågen" (Rye). Handwoven wall mounted tapestry with wool inlay on linen. Signed AB MMF. Designed 1929. This example made after 1941 by Märta Måås-Fjetterström AB, Sweden. 268 x 168 cm.

*Literature: Tyra Lundgren: "Märta Måås-Fjetterström och väv-verkstaden i Båstad", Stockholm 1968, ill. no. 28.*

*Literature: "Märta Måås-Fjetterström: Märta flyger igen! 90 år med Märta Måås-Fjetterström", exhibition catalogue Liljevalchs konsthall, ill. pp. 114.*

DKK 15,000 / € 2,000

1218

VILHELM LAURITZEN

b. 1894, d. 1984

Easy chair and matching stool with frames of elm. Seat, back and stool upholstered with light wool, fitted with buttons. Designed 1929. These examples made approx. 1930s, probably by cabinetmaker Jacob Kjær. (2)

*Literature: "Vilhelm Lauritzen. En moderne arkitekt", Bergiafonden - Aristo 1994, model ill. p. 39.*

DKK 25,000-30,000 / € 3,350-4,050



1219

**1219**  
**CARL MALMSTEN**

b. 1888, d. 1972

"Samspel". Freestanding two seater sofa with round, tapering beech legs. Sides, seat and curvy back upholstered with light wool with natural leather edgings, back fitted with leather covered buttons. Designed 1956. This example made approx. 1950-1960s by AB Record, Bollnäs, Sweden. L. 150 cm.

DKK 20,000 / € 2,700



1220

**1220**  
**AXEL EINAR HJORTH**

b. 1888, d. 1959

"Lovö". Circular coffee table of solid pine wood. Designed 1932. This example manufactured approx. 1930s for NK (Nordiska Kompaniet), Sweden. H. 55 cm. Diam. 64 cm.

*Literature: C. Björk, T. Ekström & E. Ericson: "Axel Einar Hjorth, Svenska arkitekter och formgivare", Orosdi-Back Stockholm 2011, model ill. p. 124-125.*

DKK 20,000 / € 2,700



1221

AXEL EINAR HJORTH

b. 1888, d. 1959

"Birka". Dining room suite of birch and alder root, consisting of a circular dining table and a set of four chairs. Seats upholstered with light sheepskin. Table with extension and three extra leaves of plain birch. Designed 1935. These examples manufactured late 1930-1940s for NK (Nordiska Kompaniet), Sweden. Table: H. 75 cm. Diam. 120 cm. L. 300 cm. (5)

*Literature: C. Björk, T. Ekström & E. Ericson: "Axel Einar Hjort, Svenska arkitekter och formgivare", Orosdi-Back Stockholm 2011, model ill. p. 110.*

DKK 40,000 / € 5,400



1221





1222

1222

**HALLDOR GUNNLØGSSON**

b. Frederiksberg 1918, d. Rungsted 1985

A pair of brass wall lamps, mounted with two semi spherical opal glass shades. LP Type no. 79-217. These examples manufactured 1960s by Louis Poulsen. Diam. 26 cm. (2) DKK 20,000 / € 2,700

1223

**MOGENS KOCH**

b. Frederiksberg 1898, d. Copenhagen 1992

Solid oak chest of drawers, front with 12 drawers in various sizes and a pull-out writing leaf covered with white coloured leather. Fittings and handles of brass. Designed 1936. This example made 1930s. H. 80 cm. L. 116 cm. D. 44,5 cm.

*Model designed for Sønderborg Hospital.*

*DKK 20,000-25,000 / € 2,700-3,350*



1223



1224

1224

**HALLDOR GUNNLØGSSON**

b. Frederiksberg 1918, d. Rungsted 1985

A pair of brass wall lamps, mounted with two semi spherical opal glass shades. LP Type no. 79-217. These examples manufactured 1960s by Louis Poulsen. Diam. 26 cm. (2) DKK 20,000 / € 2,700

1225

**FLEMMING LASSEN**

b. 1902, d. 1984

Freestanding two seater sofa with ash wood legs. Sides, seat and back upholstered with blue fabric, back fitted with buttons. Designed 1940. This example made 1940-1950s by cabinetmaker Jacob Kjær. L. 150 cm.

*This sofa model is a variant of the chair model presented at The Copenhagen Cabinetmakers' Guild Exhibition at Designmuseum Danmark, 1940.*

*Literature: Grete Jalk [ed.]: "40 Years of Danish Furniture Design", vol. 2, p. 116.*

*DKK 40,000-50,000 / € 5,400-6,700*



1225



1226

1226

**PHILIP ARCTANDER**

b. Copenhagen 1916, d. s.p. 1994

"Clam". Rocking chair with round beech armrests and legs. Seat and back upholstered with rust coloured fabric, fitted with buttons. Designed 1944. This example made 1940s by Nordisk Staal & Møbel Central. DKK 35,000 / € 4,700

1227

**DANISH FURNITURE DESIGN**

A pair of lounge chairs with club shaped legs of birch. Seat and back upholstered with blue fabric, fitted with buttons. These examples manufactured approx. 1930-1940s. (2)

*Literature: "Svenska hem i ord och bild" (Swedish interior magazine), 1940s. Model depicted in Karl Edvin (Wiwen) Nilsson's home.*

*DKK 20,000-25,000 / € 2,700-3,350*



1227





1228

1228  
EDNA MARTIN, ATTRIBUTED

b. 1908, d. 2003

Handwoven wool carpet in "rya" technique, reddish orange base with polychrome figures and light grid pattern. Unsigned. This example made mid 20th century, probably by Föreningen Svensk Hemslöjd, Sweden. 269 x 205 cm.

*DKK 50,000-60,000 / € 6,700-8,050*





1229







1229

FLEMMING LASSEN

b. 1902, d. 1984

JØRGEN ROHWEDER

b. 1904, d. 1994

Rare bamboo and rattan furniture set consisting of hitherto unknown two seater sofa, set of three easy chairs and a circular coffee table, top and shelf of raw glass. Original cushions included, upholstered with green striped "Capsella" fabric designed by Helga Foght. Chairs model 340. Designed 1940. These examples manufactured early 1940s by E.V.A. Nissen & Co. Sofa: L. 129 cm. Table: H. 58,5 cm. Diam. 67 cm. (5)

*Chair model presented at Charlottenborg Spring Exhibition, 1940.*

*Literature: Sigvard Bernadotte & Johs. Lehm-Laurson "Moderne Dansk Boligkunst" 1947, vol. 2, p. 184.*

*Literature: Dansk Kunsthåndværk, 1937.*

*DKK 50,000-60,000 / € 6,700-8,050*

1229



1230

1230  
JOHN VEDEL - RIEPER

d. 2004

Oak dining room suite consisting of rectangular dining table and a set of ten chairs. Seats with woven cane. Designed 1957. These examples made 1960s by cabinetmaker Erhard Rasmussen. Table: H. 70 cm. L. 180 cm. W. 90 cm. (11)

*Models presented at The Copenhagen Cabinetmakers' Guild Exhibition at Designmuseum Danmark, 1957.*

*Literature: Grete Jalk [ed.]: "40 Years of Danish Furniture Design", vol. 4, p. 32-33.*

*DKK 30,000-40,000 / € 4,050-5,400*



1230



1231 <sup>CD</sup>  
**VERNER PANTON**

b. Gamtofte 1926, d. 1998

"VIPP". Rocking chair with moulded ash frame, legs with perspex. Circular seat and back with woven cane. This example made approx. 1990 by PP Møbler. *Provenance: Bought by present owner approximately 1990. The chair is one of two prototypes made, before the final "VIPP" model was launched and put into production in 1992. The other prototype is in the collection of Trapholt museum in Kolding, Denmark.*

*Literature: "Verner Pantan - The collected works", model ill. p. 275. DKK 25,000-30,000 / € 3,350-4,050*

1231

1232  
**ROHÉ NOORDWOLDE**

Daybed of bamboo and rattan with eight sweeping legs. Loose mattress upholstered with light cotton fabric. This example made approx. 1950-1960s by Rohé Noordwolde, Netherlands. H. 41 cm. W. 81 cm. L. 196 cm. *DKK 20,000 / € 2,700*



1232





1233

1233

**HANS J. WEGNER**

b. Tønder 1914, d. Gentofte 2007

"JH 810". Freestanding mahogany desk, front with two integrated drawers in rail. Runner legs and handles of chromed steel. Designed 1970. This example made 1970s by cabinetmaker Johannes Hansen. H. 72 cm. L. 190 cm. W. 95 cm.

*DKK 80,000-100,000 / € 11,000-13,500*

1234

**POUL KJÆRHOLM**

b. Østervrå 1929, d. Hillerød 1980

"PK 11". Armchair with chromed steel frame and ash wood backrest. Seat upholstered with black leather. Designed 1957. This example manufactured approx. 1980 by E. Kold Christensen, stamped by maker.

*DKK 15,000-20,000 / € 2,000-2,700*



1234



1235

1235

**HANS J. WEGNER**

b. Tønder 1914, d. Gentofte 2007

"RY 25". Rosewood sideboard with rectangular steel legs with rosewood shoes. Front with tambour doors, behind which oak interior with trays and adjustable shelves. Steel handles. This example manufactured approx. 1965 by Ry Møbler, stamped by maker. H. 79 cm. D. 49 cm. L. 200 cm.

*DKK 30,000 / € 4,050*

1236

**POUL HENNINGSEN**

b. Ordrup 1894, d. Hillerød 1967

"PH-3/2". Table lamp. Nickel plated stand and socket house marked "Pat Appl." with original red/bronze copper shades. This example manufactured 1927-1928 by Louis Poulsen. H. 47 cm.

*Early version with screws on the side of the socket house and variant without switch house.*

*DKK 40,000-50,000 / € 5,400-6,700*

1237 ©

**KAI KRISTIANSEN**

b. 1929

Freestanding Brazilian rosewood desk, front with six drawers, reverse side with shelves. Aluminium handles and shoes. This example manufactured 1960s by Eigil Petersens Møbelfabrik for Preben Schou. H. 72 cm. L. 155 cm. W. 74 cm.

*Literature: Mobilia no. 157, August 1968, on advertisement pages.*

*DKK 20,000 / € 2,700*



1236



1237





1238

1238

**FRITS HENNINGSEN**

b. 1889, d. 1965

Armchair with Cuban mahogany frame. Seat, back and armrests upholstered with natural leather, fitted with brass nails. Designed 1933. This example made 1930-1940s by cabinetmaker Frits Henningsen.

*Model presented at The Copenhagen Cabinet-makers' Guild Exhibition at Designmuseum Danmark, 1933.*

*Literature: Grete Jalk [ed.]: "40 Years of Danish Furniture Design", vol. 1, pp. 156-157.*

*DKK 15,000 / € 2,000*



1239



1240

1239

### SWEDISH DESIGN

Console table in "Swedish Grace" style with curvy, black lacquered frame. Oval top of veneered birch. This example made approx. 1930-1940s, Sweden. H. 72 cm. W. 75 cm. L. 137 cm.

DKK 20,000 / € 2,700

1240

### KAARE KLINT

b. Frederiksberg 1888, d. Copenhagen 1954

Freestanding three seater sofa with eight legged mahogany cross frame. Sides, seat and back upholstered with patinated natural leather. Model 4118. Designed 1930. This example made 1970s by Rud. Rasmussen Cabinetmakers. L. 200 cm.

*Literature: Gorm Harkær, Klintiana: "Kaare Klint", vol. 2, p. 93. DKK 60,000-80,000 / € 8,050-11,000*



1241





1241

**OLE WANSCHER**

b. Frederiksberg 1903, d. Charlottenlund 1985

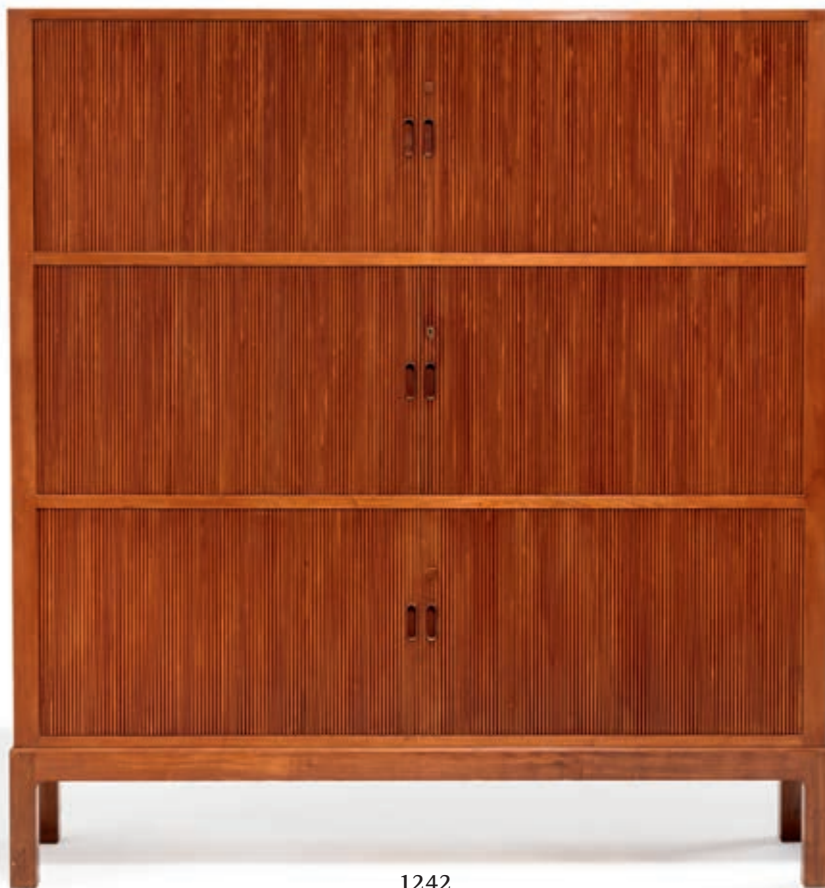
Set of ten patinated oak armchairs, back with ebony inlays. Seats upholstered with patterned black horsehair. Designed 1942. These examples made 1940s by cabinetmaker Jacob Kjær. (10)

*Model presented at The Copenhagen Cabinetmakers' Guild Exhibition at Designmuseum Danmark, 1942.*

*Literature: Grete Jalk [ed.]: "40 Years of Danish Furniture Design", vol. 2, pp. 172-173.*

*DKK 80,000-100,000 / € 11,000-13,500*





1242

1242

JACOB KJÆR

b. 1896, d. 1957

Mahogany cabinet with six tambour doors in front, behind which birch interior with adjustable shelves. This example made 1950s by cabinetmaker Jakob Kjær. H. 172 cm. W. 165 cm. D. 40 cm.

*DKK 20,000 / € 2,700*



1243



1244

1243

FRITS HENNINGSEN

b. 1889, d. 1965

A pair of mahogany stools with tapering legs and cross-stretchers. Circular seats upholstered with black horsehair. These examples made 1930-1940s by cabinetmaker Frits Henningsen. H. 45 cm. Diam. 43 cm. (2) DKK 20,000 / € 2,700

1244

OLE WANSCHER

b. Frederiksberg 1903, d. Charlottenlund 1985

Desk and armchair of mahogany, front with four drawers, handles and shoes of brass. Seat upholstered with black horsehair, black leather edgings. Chair designed 1965. These examples made approx. 1960-1970s by cabinetmaker A.J. Iversen. Desk: H. 73,5 cm. L. 153 cm. W. 74,5 cm. (2)

*Chair model presented at The Copenhagen Cabinet-makers' Guild Exhibition at Designmuseum Danmark, 1965.*

*Literature: Grete Jalk [ed.]: "40 Years of Danish Furniture Design", vol. 4, pp. 306-307, 343.*

DKK 25,000-30,000 / € 3,350-4,050



1244



1245

**1245**  
**ARNE VODDER**

b. 1926, d. 2009

Freestanding two seater sofa with tapering teak legs. Sides, back and loose seat cushions upholstered with patinated, original red leather. Designed 1953. This example made 1960s by upholsterer Ivan Schlechter, with maker's metal plaque. L. 125 cm.

*DKK 25,000 / € 3,350*

**1246**  
**FRITS HENNINGSEN**

b. 1889, d. 1965

Circular side table of solid mahogany. Top with slightly raised edge. Mounted on sweeping three-legged frame with carved legs. This example made 1930-1940s by cabinetmaker Frits Henningsen. H. 56,5 cm. Diam. 61,5 cm. *DKK 20,000 / € 2,700*



1246



1247



1248

1247 \* ©

**JACOB KJÆR**

b. 1896, d. 1957

Freestanding Brazilian rosewood desk, front with three profiled drawers in rail, handles of brass. This example made 1950s by cabinetmaker Jacob Kjær. H. 74 cm. D. 79 cm. L. 159 cm.

*DKK 20,000-30,000 / € 2,700-4,050*

1248 ©

**OLE WANSCHER**

b. Frederiksberg 1903, d. Charlottenlund 1985

Armchair with Brazilian rosewood frame and curved back. Seat upholstered with original, patinated black leather. Designed 1962. This example made 1960s by cabinetmaker A.J. Iversen, with maker's paper label.

*Model presented at The Copenhagen Cabinetmakers' Guild Exhibition at Designmuseum Danmark, 1962.*

*Literature: Grete Jalk [ed.]: "40 Years of Danish Furniture Design", vol. 4, p. 199.*

*DKK 18,000-20,000 / € 2,400-2,700*



1249

ERIK CHAMBERT

b. 1902, d. 1988

A tall showcase with carved nut wood frame, shoes of brass. Case of clear perspex, front with two sliding doors. Interior covered with blue velvet. This example made 1920-1930s by Chambert's Möbelfabrik, Sweden. H. 130 cm. W. 50 cm. L. 130 cm.

*Provenance: According to present owner, this showcase was made to order for a Swedish exhibition.*

*DKK 25,000-30,000 / € 3,350-4,050*



1249



1250

1250  
KAY FISKER

b. Frederiksberg 1893, d. København 1965

Cuban mahogany dressing set consisting of a rectangular mirror with a pair of side tables and a matching stool. Mirror with foldable sides, tables each with four drawers in front. Sculpturally carved legs, seat upholstered with black horsehair. These examples made early 1920s probably by cabinetmaker V. Bloch Jørgensen. Mirror: H. 118 cm. W. 48/110 cm. Tables: H. 74 cm. W. 32 cm. D. 34 cm. Stool: seat H. 42 cm. (4)

*Provenance: Bought by current owner's grandfather who was a friend and colleague of Kay Fisker.*

*DKK 60,000-80,000 / € 8,050-11,000*



1251

HERMANN ERNST FREUND

b. Uthlede near Bremen 1786, d. Copenhagen 1840

Three seater sofa with carved frame of stained beech. Seat and back upholstered with black horsehair, fitted with red and green tassels, red leather edgings. This example made first half of 19th century. L. 184 cm.

*Litreature: Miriam Gelfer-Jørgensen: "Herculanum paa Sjælland", p. 107, fig. 96.*

*Similar sofa at Designmuseum Danmark and at the National History museum at Frederiksborg Castle.*

DKK 60,000 / € 8,050



1251

1252

HERMANN ERNST FREUND

A pair of Danish mahogany armchairs in Pompeian style. Armrests carved with resting sphinx. Seat with woven cane, back and loose seat cushions upholstered with patterned black horsehair. These examples made 1830-1836. (2)

*Literature: Mirjam Gelfer-Jørgensen, Herculaneum paa Sjælland, p. 379, pl. 20.*

*An exact model of this chair is also represented at Design Museum Denmark, Copenhagen. DKK 80,000 / € 11,000*



1252





1253

1253 ©

**HELGE BØRGE MORTENSEN**

Freestanding Brazilian rosewood desk with profiled legs. Front with four drawers with carved circular handles. Made 1966 by cabinetmaker Arne Poulsen. H. 72 cm. L. 160 cm. D. 80 cm.

*Provenance: Cabinetmaker Arne Poulsen, hence by descent.*

*Made as apprenticeship test by cabinetmaker Arne Poulsen, Copenhagen. Apprenticeship piece given praise, October 29th 1966. Signed by Oldermund, Poul Madsen and Chairman of the apprenticeship Commission in Copenhagen, P. Hansen.*

*DKK 20,000-25,000 / € 2,700-3,350*



1254



1255

1254

**ERIK WØRTS**

b. København 1916, d. Herlev 1997

Freestanding rosewood sideboard, front with two sliding doors, behind which oak interior with trays, shelf and space dividers. This example made early 1960s by cabinetmaker Wørts. H. 87 cm. D. 50 cm. L. 175 cm.

*Provenance: Composer Ursula Mamlok. Bought at Den Permanente, 1962.*

*DKK 15,000-20,000 / € 2,000-2,700*

1255

**HANS J. WEGNER**

b. Tønder 1914, d. Gentofte 2007

"China chair". A set of six stained cherry armchairs. Loose seat cushion upholstered with brown leather, fitted with buttons. Model 4283. Designed 1944. These examples manufactured 1977 by Fritz Hansen, with maker's label. (6)

*DKK 30,000 / € 4,050*

1256

**IB KOFOD - LARSEN**

b. 1921, d. 2003

"Elizabeth". A pair of easy chairs with mahogany frame. Sides, back and loose seat cushion upholstered with red coloured leather. Model U-56. Designed 1956. These examples made 1960s by Christensen & Larsen Cabinetmakers, stamped by maker. (2)

*Model presented at The Copenhagen Cabinetmakers' Guild Exhibition at Designmuseum Danmark, 1958.*

*Literature: Grete Jalk [ed.]: "40 Years of Danish Furniture Design", vol. 3, p. 48-49.*

*DKK 100,000-125,000 / € 13,500-17,000*



1256







1257

**1257**  
**FINN JUHL**

b. Frederiksberg 1912, d. Ordrup 1989

"BO 101". A low teak table/bench. Anodized steel frame and tall teak shoes. Raised brass edges. Designed 1953. This example manufactured approx. 1960s by Bovirke. H. 40,5 cm. L. 150 cm. W. 45 cm. *Literature: Esbjørn Hiorth: "Arkitekten Finn Juhl", 1990, ill. pp. 56-57.* DKK 20,000 / € 2,700

**1258**  
**FINN JUHL**

b. Frederiksberg 1912, d. Ordrup 1989

"FD 540". Rectangular dining table of solid teak with extension and two solid teak leaves underneath top. Mounted on round, tapering legs. This example manufactured 1960s by France & Søn. H. 72,5 cm. L. 185/285 cm. W. 100 cm. DKK 20,000 / € 2,700



1258



1259

**1259**  
**FINN JUHL**

b. Frederiksberg 1912, d. Ordrup 1989

"BO 118". Rare teak armchair with moulded armrests. Seat and back upholstered with cognac coloured leather. Designed before 1958. This example manufactured 1958-1960 by Bovirke, stamped by maker.

*Literature: Bovirke catalogue, 1958. Illustrated.*

*DKK 60,000 / € 8,050*



1260

**1260**  
**GRETE JALK**

b. 1920, d. 2006

"Churchill desk". Solid mahogany desk, front with two drawers, pull-out leaf and shelves. Top covered with patinated natural leather with storage space underneath. This example made late 1970s by cabinetmaker Niels Roth Andersen, stamped by Søren Horns Efterfølger. H. 113 cm. D. 54 cm. W. 104 cm.

*DKK 25,000 / € 3,350*



1261



1262

1261

**EJNER LARSEN**

b. 1917, d. 1987

**AKSEL BENDER MADSEN**

b. 1916, d. 2000

Circular teak coffee table mounted on three tapering legs. Top with raised edge. Model 1804. Designed 1953. This example made 1950-1960s by cabinetmaker Willy Beck, with maker's metal plaque. H. 55 cm. Diam. 100 cm.

*Literature: Grete Jalk [ed.]: "40 Years of Danish Furniture Design", vol. 3, p. 237, 275.*

DKK 20,000 / € 2,700

1262

**FINN JUHL**

b. Frederiksberg 1912, d. Ordrup 1989

"FJ 53". Freestanding two seater teak sofa with floating armrests on brass fittings. Sides, seat and back upholstered with greenish-yellow wool. Designed 1953. This example made 1950-1960s by cabinetmaker Niels Vodder. L. 130 cm.

*Model presented at The Copenhagen Cabinetmakers' Guild Exhibition at Designmuseum Danmark, 1953.*

*Literature: Grete Jalk [ed.]: "40 Years of Danish Furniture Design", vol. 3, ill. pp. 270-271.*

DKK 50,000 / € 6,700





1263

1263

HANS BERGSTRÖM

Sweden 20th century

Floorlamp with circular base of reddish-brown lacquered metal. Brass arm and conical shade of reddish-brown lacquered metal with pierced rim. This example manufactured 1940-1950s by Ateljé Lyktan, Sweden. H. 124 cm.

DKK 20,000 / € 2,700

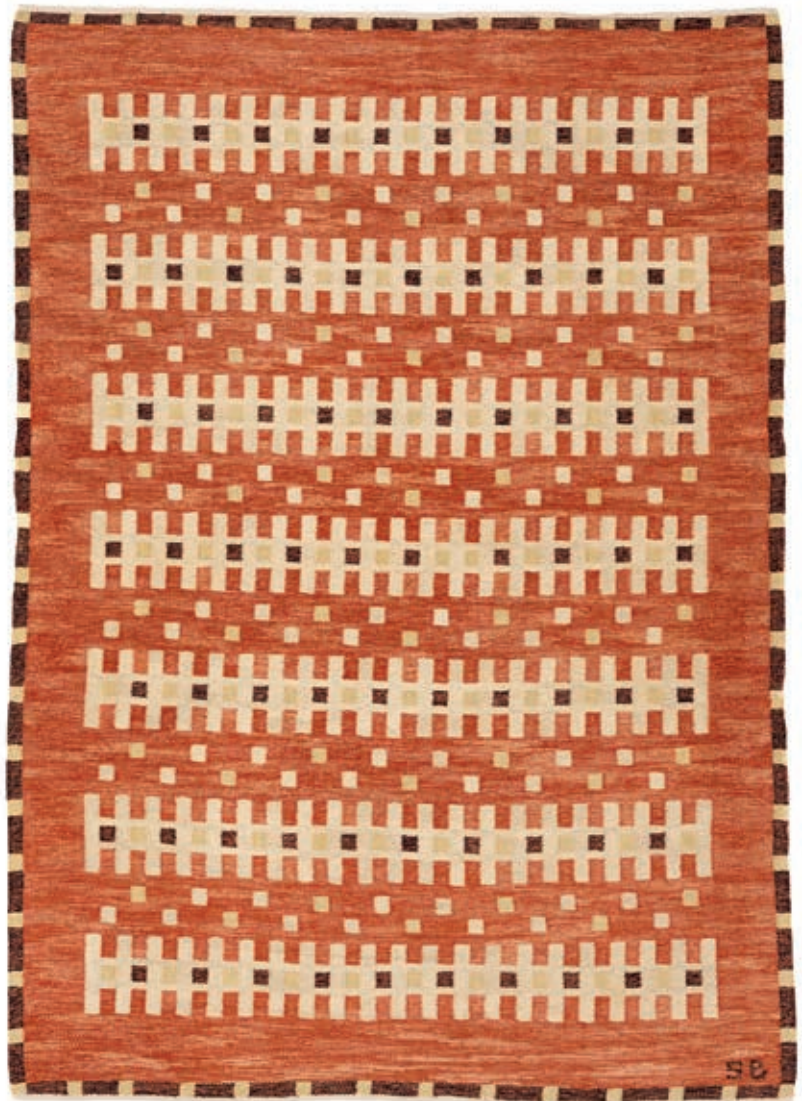
1264

SIGVARD BERNADOTTE

b. 1907, d. 2002

Handwoven wool carpet in "rölakan" flat weave technique, reddish base with geometrical patterns in creme, yellow and brown. Signed monogram SB. This example made approx. mid 20th century, Sweden. 308 x 218 cm.

DKK 40,000 / € 5,400



1264

1265

FINN JUHL

b. Frederiksberg 1912, d. Ordrup 1989

Freestanding 2½ seater sofa mounted on round, tapering legs of beech. Sides, seat and back upholstered with red wool, sides and back fitted with buttons. This example manufactured 1950s by Bovirke. L. 170 cm.

*Literature: The magazine "Dansk Kunsthåndværk" no. 11, 1950. DKK 30,000-40,000 / € 4,050-5,400*



1265

1266

FINN JUHL

b. Frederiksberg 1912, d. Ordrup 1989

Coffee table with teak top and raised edges. Mounted on three-legged beech frame with teak shoes. This example manufactured 1950s by Bovirke. H. 55 cm. L. 89 cm. W. 55 cm.

*Literature: "Dansk Kunsthåndværk", no. 3, 1950. DKK 20,000 / € 2,700*



1266



1267

FINN JUHL

b. Frederiksberg 1912, d. Ordrup 1989

"Chieftain Chair". A mahogany easy chair. Seat, armrests and back upholstered with natural leather, back fitted with buttons. Designed 1949. Frame made approx. 1970s by upholsterer Ivan Schlechter. DKK 100,000 / € 13,500



1267







1268

**1268**  
**FINN JUHL**

b. Frederiksberg 1912, d. Ordrup 1989

"Chieftain sofa". Two seater sofa with frame of walnut. Seat, back and armrests upholstered with brown leather, back fitted with buttons. Designed 1949. This example manufactured 2013 by OneCollection, with maker's metal plaque. L. 145 cm.

*DKK 150,000-200,000 / € 20,000-27,000*



1269

1269

**JØRGEN DITZEL**

b. Frederiksberg 1921, d. Copenhagen 1961

**NANNA DITZEL**

b. Copenhagen 1923, d. s.p. 2005

"AP 26". Easy chair with round oak legs. Seat, sides and back upholstered with light brown wool. Designed 1953. This example manufactured 1950-1960s by AP Stolen.

*DKK 15,000-20,000 / € 2,000-2,700*



1270

1271

NANNA DITZEL

b. Copenhagen 1923, d. s.p. 2005

JØRGEN DITZEL

b. Frederiksberg 1921, d. Copenhagen 1961

A pair of lounge chairs with black lacquered oak frame. Seat and back upholstered with patinated, original black leather. Model 114. Designed 1958. These examples manufactured 1960s by Kolds Savværk. (2)

*Presented at the exhibition "Købestævnet" in Fredericia, 1958.*

*Literature: Mobilia no. 33, April 1958.*

*DKK 25,000 / € 3,350*



1271

1270

BARBRO NILSSON

b. 1899, d. 1983

"Marina". Handwoven wool carpet in "rya" technique, pattern in shades of blue, green and brown. Signed monogram AB MMF, AMHI 1957, BN. Designed 1956. This example made 1957 by Märta Måås-Fjetterström AB, Sweden. 106 x 244 cm.

*DKK 15,000-20,000 / € 2,000-2,700*





1272





1272 ©

**NANNA DITZEL**

b. Copenhagen 1923, d. s.p. 2005

**JØRGEN DITZEL**

b. Frederiksberg 1921, d. Copenhagen 1961

Very rare chaise longue with Brazilian rosewood frame. Seat and back upholstered with light wool. Designed and made 1951 by I/S Knud Willadsen Cabinetmakers. L. 140 cm.

*Provenance: Margrethe Schanne (1921-2014), solo dancer at the Royal Danish Ballet.*

*This is the only piece made, until the model was re-introduced into production by Kitani, Japan in 2007.*

*This example exhibited: The Copenhagen Cabinetmakers' Guild Exhibition at Designmuseum Danmark, 1951.*

*Literature: Grete Jalk [ed.]: "40 Years of Danish Furniture Design", vol. 3, p. 197.*

*Literature: Henrik Sten Møller: "Motion and Beauty, The Book of Nanna Ditzel" 1998, ill. and referred to pp. 48-49.*

*DKK 80,000-120,000 / € 11,000-16,000*



1273

NANNA DITZEL

Circular stool of moulded, laminated Oregon pine. Loose seat cushion upholstered with patinated natural leather. Designed 1962. This example made 1960s by cabinetmaker Povl Christansen. H. incl. cushion 34 cm. Diam. 48 cm.

*Model presented at The Copenhagen Cabinetmakers' Guild Exhibition at Designmuseum Danmark, 1962.*

*Literature: Grete Jalk [ed.]: "40 Years of Danish Furniture Design", vol. 4, ill. p. 193.*

*DKK 25,000-30,000 / € 3,350-4,050*



1273





1274

1274 ©

IB KOFOD - LARSEN

b. 1921, d. 2003

"Elizabeth". A pair of easy chairs with Brazilian rosewood frame. Sides, back and loose seat cushion upholstered with original natural leather. Model U-56. Designed 1956. These examples made 1962 by Christensen & Larsen Cabinetmakers, stamped by maker. (2)

*Provenance: Bought by present owner at Den Permanente, 1962. Copy of the original receipt included.*

*Model presented at The Copenhagen Cabinetmakers' Guild Exhibition at Designmuseum Danmark, 1958.*

*Literature: Grete Jalk [ed.]: "40 Years of Danish Furniture Design", vol. 3, p. 48-49. DKK 200,000 / € 27,000*



1275 ©

IB KOFOD-LARSEN

b. 1921, d. 2003

"Elizabeth". Two seater sofa with Brazilian rosewood frame. Sides, back and loose seat cushion upholstered with original natural leather. Model U-56. Designed 1956. This example made 1962 by Christensen & Larsen Cabinetmakers, stamped by maker. L. 145 cm.

*Provenance: Bought by present owner at Den Permanente, 1962. Copy of the original receipt included.*

*Model presented at The Copenhagen Cabinetmakers' Guild Exhibition at Designmuseum Danmark, 1958.*

*Literature: Grete Jalk [ed.]: "40 Years of Danish Furniture Design", vol. 3, p. 48-49. DKK 125,000 / € 17,000*



1275





1276

**HANS J. WEGNER**

b. Tønder 1914, d. Gentofte 2007

"The Chair". A pair of mahogany armchairs. Seats upholstered with natural leather. Model JH 503. Designed 1949. These examples made 1960s by cabinetmaker Johannes Hansen, stamped by maker. (2)

*Literature: Grete Jalk [ed.], "40 Years of Danish Furniture Design", Vol. 3, pp. 98-101, 140-142.*

DKK 20,000-25,000 / € 2,700-3,350



1276



1277

1277

POUL HENNINGSEN

b. Ordrup 1894, d. Hillerød 1967

"PH-3/2 Academy". Chandelier with brass frame, three branches with socket houses marked "Patented.". Top shades of yellow, frosted glass, middle and bottom shades of clear, frosted glass. This example manufactured 1928-1933 by Louis Poulsen. Diam. 68 cm.

*DKK 80,000-100,000 / € 11,000-13,500*



1278

1278 ©

FINN JUHL

b. Frederiksberg 1912, d. Ordrup 1989

"FJ 45". A pair of Brazilian rosewood easy chairs. Sides, back and loose seat cushion upholstered with brown wool. Designed 1945. These examples made 1950-1960s by cabinetmaker Niels Vodder, stamped by maker. (2)

*DKK 250,000-300,000 / € 33,500-40,500*







1279

1279

**BARBRO NILSSON**

b. 1899, d. 1983

"Tånga, grön" (Seaweed, green). Handwoven wool carpet in "tapestry" flat weave technique. Base in shades of brown and green, decorated with polychrome stylized "berries". Signed monogram ABMMF BN. Designed 1955. This example made after 1941 by Märta Måås-Fjetterström AB, Sweden. 285 x 194 cm.

*The "Tånga" pattern was originally designed for the Helsingborg Exhibition – H55.*

*Literature: Viggo Sten Möller: "En bok om Barbro Nilsson", Stockholm/Barcelona 1977, ill. and mentioned pp. 35, 68-69.*

*"Märta Måås-Fjetterström: Märta flyger igen! 90 år med Märta Måås-Fjetterström", exhibition catalogue Liljevalchs konsthall, ill. p. 154.*

*DKK 120,000-150,000 / € 16,000-20,000*



1280

1280 ©

**FINN JUHL**

b. Frederiksberg 1912, d. Ordrup 1989

"FJ 55". Set of six Brazilian rosewood chairs. "Floating" seat and back mounted with brass fittings and upholstered with light wool. Designed 1955. These examples made 1960s by cabinetmaker Niels Vodder, stamped by maker. (6) *Literature: Niels Vodder Catalogue, May 1956.*

*Noritsuga Oda: "Finn Juhl Memorial Exhibition", ill. p. 140-141. DKK 80,000-100,000 / € 11,000-13,500*

# INDEX

---

## A

---

Andersen, Knud 1077, 1103  
Arctander, Philip 1226

## B

---

Bang, Arne 1096  
1097, 1098, 1099  
Bender Madsen, Aksel 1261  
Bergström, Hans 1263  
Bernadotte, Sigvard 1018, 1020  
1022, 1023, 1035  
1036, 1039, 1264  
Bernt 1148  
Bindesbøll, Thorvald 1081  
Bluitgen, Ib 1029  
Bo, Jørgen 1178  
Bøgelund, Gerd 1077

## C

---

Chambert, Erik 1118, 1249

## D

---

Dangel, Carl 1149  
Danish design 1227  
Ditzel, Jørgen 1207  
1269, 1271, 1272  
Ditzel, Nanna 1207, 1269  
1271, 1272, 1273

## E

---

Eckhoff, Tias 1030  
Ernst, Morten 1179

## F

---

Fisker, Kay 1028  
1040, 1041, 1250  
Freund, Hermann Ernst 1251, 1252

## G

---

Gallé, Emile 1067  
Gunnløgsson, Halldor 1222, 1224

## H

---

Hagen, Ole 1027  
Halier, Carl 1100  
Hansen Jr., Severin 1213  
Hansen, Hans 1042

Henningsen, Frits 1117, 1119  
1124, 1125, 1126  
1238, 1243, 1246  
Henningsen, Poul 1116, 1120  
1122, 1128, 1138  
1169, 1236, 1277  
Hjorth, Axel Einar 1214, 1220, 1221  
Hvidt, Peter 1194

## J

---

Jacobsen, Arne 1167  
1168, 1181, 1204  
Jalk, Grete 1260  
Jansson, Folke 1192  
Jensen, Anne-Mette 1179  
Jensen, Georg 1012, 1013  
1021, 1044, 1045  
1046, 1047, 1048  
Jensen, Jørgen 1025  
Jensen, Søren Georg 1024  
Juhl, Finn 1108, 1109, 1154, 1155,  
1156, 1157, 1162, 1163  
1165, 1184, 1257, 1258  
1259, 1262, 1265, 1266  
1267, 1268, 1278, 1280

## K

---

Kaipainen, Birger 1049, 1052  
Kindt-Larsen, Edvard 1150  
1159, 1160, 1190  
1195, 1196, 1199  
Kindt-Larsen, Tove 1150  
1159, 1160, 1190  
1195, 1196, 1199  
Kjær, Jacob 1242, 1247  
Kjærholm, Hanne 1166  
Kjærholm, Poul 1129  
1130, 1131, 1133  
1135, 1136, 1170  
1172, 1173, 1174  
1176, 1177, 1234  
Klint, Kaare 1121  
1123, 1140, 1240  
Knoll, Florence 1175  
Koch, Mogens 1112, 1223

Kofod-Larsen, Ib 1104, 1110, 1111  
1256, 1274, 1275  
Koppel, Henning 1026, 1031, 1032  
Kristiansen, Bo 1061, 1089  
Kristiansen, Kai 1237  
Kühn, Ernst 1183

## L

---

Larsen, Ejner 1114, 1261  
Larsen, Ole 1134  
Lassen, Flemming 1225, 1229  
Lauritzen, Vilhelm 1161, 1211  
1212, 1216, 1218  
Lund, Jørgen 1134

## M

---

Madsen, Aksel Bender 1114  
Madsen, Carl 1193  
Madsen, Ib 1209  
Malmsten, Carl 1219  
Manz, Bodil 1053, 1058, 1059  
1063, 1064, 1065  
1073, 1090, 1091  
Martin, Edna 1228  
Mogensen, Børge 1197  
Moos, Peder 1151, 1152, 1153  
Mortensen, Helge Børge 1253  
Måås-Fjetterström, Märta 1141  
1164, 1215, 1217  
Mølgaard-Nielsen, Orla 1194

## N

---

Nielsen, Harald 1033, 1034  
1037, 1038, 1043  
Nielsen, Jais 1082  
Nilsson, Barbro 1270, 1279  
Noordwolde, Rohé 1232

## O

---

Olsen, Ib Kennet 1127

## P

---

Palmqvist, Sven 1071  
Panton, Verner 1231  
Ponti, Gio 1182



## INDEX

---

### R

Rohde, Johan	1014, 1015 1016, 1017, 1019
Rohweder, Jørgen	1229

### S

Salto, Axel	1050, 1075, 1076 1078, 1079, 1080 1084, 1101, 1102
Schlegel, Frits	1107
Schubell, Acton	1209
Siesbye, Alev Ebüzziya	1054, 1055 1056, 1057, 1060 1062, 1066, 1072 1074, 1083, 1086 1087, 1088, 1092, 1095
Starck, Philippe	1180
Syrach-Larsen, Steffen	1105
Swedish design	1144 1185, 1186, 1191 1208, 1210, 1239

### T

Thorsson, Nils	1103
----------------	------

### V

Vasegaard, Gertrud	1068 1069, 1094
Vasegaard, Myre	1068, 1094
Vedel-Rieper, John	1230
Vestergaard Jensen, Helge	1147
Vodder, Arne	1245

### W

Wanscher, Ole	1137, 1139 1241, 1244, 1248
Wegner, Hans J.	1106 1115, 1132, 1142, 1143 1198, 1200, 1201, 1202 1203, 1204, 1205, 1206 1233, 1235, 1255, 1276
Weiss, Per	1051, 1070, 1093
Wiinblad, Bjørn	1085
Winding, Kaj	1146
Wohlert, Vilhelm	1145, 1158
Wørts, Erik	1187 1188, 1189, 1254

### Ø

Østervig, Kurt	1113, 1171, 1193
----------------	------------------





# INTERNATIONAL AUCTION

Fine Art - 20 September 2016

Antiques - 21 September 2016







# ORIENTAL ART

Upcoming international auction - December 2016



*Large Danish private collection of thangkas and manuscript covers offered at auction.  
Shown here is a thangka of Buddha Shakyamuni with disciples, 18th-19th century.*



**BRUUN RASMUSSEN**

AUCTIONEERS OF FINE ART

# AXEL SALTO

Upcoming international auction - December 2016



*Impressive works by Axel Salto included in our next sale.*



**BRUUN RASMUSSEN**

AUCTIONEERS OF FINE ART



# JEWELLERY

Upcoming international auction - December 2016



*Chopard: "Casmir". A white gold necklace set with 462 diamonds.*

*Estimate: DKK 250,000 / € 33,500*

At the last and most prestigious sale of the year we will offer a special selection of signed jewellery by world-famous jewellers such as Cartier, Chopard and Van Cleef & Arpels, to name a few.

Please contact Head of Department Julie Gram,  
+45 8818 1171 / [jgm@bruun-rasmussen.dk](mailto:jgm@bruun-rasmussen.dk)  
or Kristine Tanderup (Aarhus), +45 8818 1237 / [ktt@bruun-rasmussen.dk](mailto:ktt@bruun-rasmussen.dk)  
for consignment and valuation.



**BRUUN RASMUSSEN**

AUCTIONEERS OF FINE ART

## CITES EXPORT PERMIT

Catalogue numbers marked with (©) are items covered by the Washington Convention. Items made or processed from 1947 and onwards are sold with a CITES certificate, which is valid within the EU. Items processed before 1947 do not require a CITES certificate for a sale within the EU. For export to countries outside the EU, a Danish CITES export permit is required for items processed both before and after 1947, and possibly also a corresponding import permit for the country, which the export of the item is intended for.

## DISPATCH

Collection of purchases bought at traditional auctions must be no later than 2 weeks after the last auctionday.

Uncollected items will without further notice be sent into storage at the expense and risk of the buyer.

## SALES RESULTS

Sales results from the latest auctions are available at our website: [bruun-rasmussen.dk](http://bruun-rasmussen.dk)

## PHOTO

Photos of all items are available at our website: [bruun-rasmussen.dk](http://bruun-rasmussen.dk)

## EURO

Bids and invoicing are made in DKK.

For the conversion from DKK into Euro, Bruun Rasmussen has used the official rate of exchange from Denmark's Nationalbank (the Danish National Bank) at the time of preparation of the catalogue.

The amount in Euro is, in Bruun Rasmussen's judgment, roughly adjusted to presentable figures.

## CONDITION

Bruun Rasmussen draws attention to the fact that, as a rule, no information is provided regarding the condition of the lots (cf. conditions of purchase § 10).

However, we refer to our website: [www.bruun-rasmussen.dk](http://www.bruun-rasmussen.dk) where information regarding condition, repairs, etc. can usually be found for the individual lot. Should this information be insufficient, further details can be obtained by contacting one of the experts of the department.

## BANKERS

Danske Bank · Account: 30014310970638  
IBAN: DK4130004310970638  
Swift-BIC DABADKKK

## BUSINESS REGISTRATION

CVR-nr. DK25472020

## CITES EKSPORT TILLADELSE

Katalognumre markeret med (©) er effekter, der omfattes af Washingtonkonventionen. Effekter udført eller forarbejdet fra 1947 og frem sælges med CITES-certifikat gyldigt inden for EU. Effekter forarbejdet før 1947 kræver ikke CITES-certifikat før salg inden for EU. For udførsel til lande uden for EU kræves en dansk CITES-eksporttilladelse både for effekter udført før og efter 1947 samt muligvis en tilsvarende importtilladelse i det land, som effekten ønskes indført i.

## AFHENTNING

Afhentning af effekter købt på traditionel auktion SKAL SKE senest 2 uger efter sidste auktionsdag.

Uafhentede effekter vil herefter uden yderligere varsel blive sendt til opbevaring for købers regning og risiko.

## SALGSRESULTATER

Hammerslagspriser fra de seneste auktioner kan ses på vores hjemmeside: [bruun-rasmussen.dk](http://bruun-rasmussen.dk)

## FOTO

Fotos af alle effekter kan ses på vores hjemmeside: [bruun-rasmussen.dk](http://bruun-rasmussen.dk)

## EURO

Der bydes og faktureres i danske kroner.

Ved omregning fra DKK til Euro er anvendt Nationalbankens officielle valutakurs på tidspunktet for udarbejdelse af kataloget.

Beløbet i Euro er afrundet til et tal, der efter Bruun Rasmussens skøn fremtræder på en præsentabel måde i forhold til beløbet i DKK.

## BEVARINGSTILSTAND

Bruun Rasmussen henleder opmærksomheden på, at katalognumrene som udgangspunkt ikke er forsynet med oplysninger om tilstand (jvf. købskonditionernes § 10). Vi henviser imidlertid til vores hjemmeside: [www.bruun-rasmussen.dk](http://www.bruun-rasmussen.dk), hvor der under det enkelte katalognummer ofte er oplysninger om bevaringstilstand, reparationer o. lign. Er disse oplysninger ikke tilstrækkelige kan én af afdelingens sagkyndige kontaktes for yderligere informationer.

## BANKFORBINDELSE

Danske Bank · Konto: 30014310970638  
IBAN: DK4130004310970638  
Swift-BIC DABADKKK

## VIRKSOMHEDSREGISTRERING

CVR-nr. DK25472020

# CONDITIONS OF PURCHASE

---

## § 1. BIDDING

The buyer shall be the highest bidder at the "hammer price". Any person bidding on behalf of a third party shall be liable in surety for completion of the sale.

At the request of Bruun Rasmussen Kunstauktioner (hereinafter called Bruun Rasmussen), all bidders, whether they wish to make bids in person at the place of auction or commission bids by letter, fax or the homepage direct telephone bids or the homepage, should be able to document their ability to pay and be able to provide proof of identity at any time. Bruun Rasmussen is entitled to refuse to accept a bid if, when requested, adequate security or adequate payment on account has not been rendered.

Bids should be made by the bidder in person at the place of auction or by written commission by letter, fax or the homepage. For online auctions all bids are submitted via the homepage. Telephone bidding is possible within certain conditions made out by Bruun Rasmussen. Bruun Rasmussen is not to be held responsible for any errors that may occur using this service. The auctioneer shall have absolute discretion as to the increment of the bids. The auctioneer will also make decisions in all cases of doubt regarding the bidding.

Credit/debit card information must be registered with Bruun Rasmussen before bids can be submitted.

## § 2. PAYMENT

Purchases made at all Bruun Rasmussen traditional salesroom auctions are subject to a 30% fee (for wines, coins and stamps 25%), which covers 24% buyer's premium plus VAT of the premium.

Purchases made at all Bruun Rasmussen online auctions are subject to a 25% fee, which covers 20% buyer's premium and VAT of the premium.

Certain lots are sold in accordance with specific rules on normal VAT arrangement (hereinafter called normal VAT), so that the purchase price is the hammer price plus an additional 24% (for online auctions, wines, coins and stamps 20%) in buyer's premium and VAT of 25% levied on both the hammer price and the buyer's premium. The lots subject to Full VAT are indicated as such in the catalogue and on the homepage with an asterisk (\*).

Danish VAT registered buyers shall provide Bruun Rasmussen with documentation of their SE-/CVR -number (VAT No.) as this has to be quoted on the invoice for goods bought at full VAT.

For some foreign buyers, specific VAT-exemption rules apply (cf. Article 3). VAT-exemption does not apply to private buyers from the EU who are considered as Danish buyers (cf. current Danish legislation on Special VAT Scheme for Sales of Works of Art, Collectors' items and Antiques by Public Auction).

The purchase price falls due for payment when the goods have been knocked down. Payment may be made in cash up to DKK 50,000, by Dankort, banker's cheque, traveller's cheque, Visa-, Master-, Diners Club- or Eurocard. Personal foreign cheques may only be used for payment by prior arrangement.

At traditional auctions payment for purchased items must be made during or immediately after the auction. Under all circumstances payment must be made no later than eight days from the date of the invoice. With online auctions, payment automatically takes place when the items are prepared for dispatch (circa 12 hours after the purchase has been made) using the credit/debit card details submitted by the purchaser. At the same time an invoice and dispatch information will be sent to the purchaser.

Should the purchase price not be paid by the due date, interest at 1.5 % per new month will be charged.

If the purchase price and interest are not paid within eight days after Bruun Rasmussen has sent its demand to the buyer, Bruun Rasmussen shall be entitled to rescind the sale and resell the goods at a Bruun Rasmussen auction or privately, and to demand reimbursement of any related losses from the defaulting

buyer. Any further profit on the sale shall be payable to the person who had deposited the goods for sale by auction.

If the defaulting buyer is entitled to proceeds from a sale of goods by Bruun Rasmussen, Bruun Rasmussen shall be entitled to set off its receivables against its payables to the defaulting buyer.

If the defaulting buyer has deposited other goods for sale, Bruun Rasmussen shall be entitled to sell such goods at a Bruun

Rasmussen auction without being bound by the reserve stipulated by the defaulting buyer. The defaulting buyer shall not be entitled to demand the surrender of goods deposited for sale as long as the debt payable to Bruun Rasmussen has not been discharged, regardless of whether the value of such goods may be deemed to exceed the debt payable.

Bruun Rasmussen shall be entitled to refuse a bid made by a buyer who is in default in respect to his payment obligations to Bruun Rasmussen, as well as a bid made by a third party on behalf of such a defaulting buyer. Bruun Rasmussen shall further be entitled to demand a deposit as a condition of accepting any future bids from such a purchaser.

## § 3. MONEY-BACK GUARANTEE

A. Purchases made on all traditional salesroom auctions are unconditional and can not be cancelled regardless of the type of bid such as absentee web bid, live-bidding or otherwise.

B. Online purchase of items by private individuals is subject to Danish consumer law, which extends 14 days of money-back guarantee. The purchaser is liable for any costs related to the transport of returned items.

Should a purchaser seek to avail himself or herself of the money-back guarantee, Bruun Rasmussen will refund the payment on receiving the returned items. Please note that the date on which accounts are debited is subject to the policy of the purchaser's bank/credit card company.

## § 4. EXEMPTION FROM VAT

Foreign buyers who meet the following conditions pay the applicable auction fees, cf. above, but are not charged Danish VAT. However, the Danish VAT must be deposited at Bruun Rasmussen until documentation has been provided to show that the goods have been exported as required by law.

A. Buyers who are VAT-registered in another EU country are exempt from paying Danish VAT when it can be documented that the item purchased has been transported to the address declared by the buyer to Bruun Rasmussen and specified on the invoice. In such cases, VAT must be settled in accordance with the rules in force in the country where the company is VAT-registered. It is advisable to check with the relevant local authorities.

B. Buyers domiciled outside the EU may be exempt from Danish VAT when it can be documented that the purchase has been transported out of the EU. As far as possible, Bruun Rasmussen issues the necessary export documents to be presented to the customs authorities, and reserves the right to charge a fee for doing so.

If the goods are being exported by a freight forwarder authorised by Bruun Rasmussen, the VAT need not be deposited. See the list of approved freight forwarders

## § 5. PAYMENT OF TAXES AND DUTIES

A. VAT-registered businesses in other EU Member States may opt out of exercising the option of VAT exemption and instead pay Danish VAT on second-hand goods/full VAT. Bruun Rasmussen must be informed of this before 10 am on the day after the purchase.

B. VAT-registered businesses in Denmark may choose to pay full VAT, cf. above. Bruun Rasmussen must be informed of this before 10 am on the day after the purchase.

## § 6. COLLECTION OF PURCHASES

The purchase price must be paid in full before the purchased lot can be passed over to the buyer. From the time of the lot being knocked down to the buyer, until its collection, the purchased lot will be held at the buyer's own expense and risk.

A storage fee will be charged for lots which have not been collected according to agreement. Lots which have been paid for but not collected will be stored at buyers expense. Lots not collected within 1 year will be resold at auction or privately at the buyer's expense.

## § 7. DISPATCH

Should Bruun Rasmussen undertake the packaging and forwarding of purchased goods, this shall be done at the buyer's own expense and risk. Bruun Rasmussen shall thus not be held liable neither for any damage caused to purchased goods during dispatch nor for any missing consignments.

## § 8. DROIT DE SUITE

In accordance with Danish copyright law, an additional royalty fee is to be paid for the purchase of works by contemporary Danish artist and some international artists who are either still alive or who have been dead for less than 70 years. The additional royalty fee will be collected by Bruun Rasmussen on behalf of Copydan, which is a Danish-based joint collecting society. Such works are marked with (CD) for Copydan next to the lot number.

The Copydan royalty fee is added to the auction price including the buyer's premium when the total exceeds €300.

Copydan royalty fees:

- 5% of the auction price and buyer's premium (excluding VAT) totalling up to €50,000.
- 3% of the auction price and buyer's premium (excluding VAT) of totals between €50,000 and €200,000.
- 1% of the auction price and buyer's premium (excluding VAT) of totals between €200,000 and €350,000.
- 0.5% of the auction price and buyer's premium (excluding VAT) of totals between €350,000 and €500,000.
- 0.25% of the auction price and buyer's premium (excluding VAT) of totals above €500,000.

Copydan royalties must not exceed €12,500 for an individual artwork.

The euro exchange rate has been set by Copydan for 2016 at DKK 746,02 per €100.

## § 9. EXPORT LICENCE

Applications for an export licence must be made to the Danish Cultural Assets Committee when required in accordance with current Danish legislation on the protection and preservation of cultural assets in Denmark. Where such a licence has not been obtained, the foreign buyer will be informed thereof immediately after the lot has been knocked down to the buyer. Another application will subsequently be sent to the Danish Cultural Assets Committee by Bruun Rasmussen on behalf of the buyer, now that the price is known. Should an export licence not be granted, the Danish Cultural Assets Committee would be obliged to acquire the purchased lot at the purchase price, and the buyer would thus not be bound to the purchase.

## § 10. DESCRIPTION OF LOTS

All lots are sold in the condition in which they are found when knocked down and as described in the catalogue and on the homepage with subsequently published changes and modifications. Description is done according to the best of Bruun Rasmussen's knowledge and on the cataloguing principles stated.

The lots auctioned are often of some age or of a kind which makes it possible that they may contain defects, deficiencies, or may have been subject to restoration or damage not necessarily stated in the catalogue and on the homepage. Pictures are for identification only and cannot be used for an evaluation of the condition of the goods.

Any person who wishes to bid at an auction should therefore satisfy himself of the condition of the lots for which he intends to bid by personal inspection at the preview held prior to the auction. The description is an indication of the prevailing opinion of scholars and expert at the time of the sale. If any doubts should

arise after the purchase regarding the genuineness of the purchased lot or its conformance with the description, Bruun Rasmussen should immediately be informed thereof.

Should the purchased lot be proved to be a forgery, or if the description contains material errors which lead to a considerably higher hammer price than that which a correct description would presumably result in, the buyer shall be entitled to cancel the purchase, after which the buyer shall be reimbursed for the total purchase price paid plus buyer's premium and VAT, when applicable.

For material errors in the description in respect to measurements or weight, compensation shall only be paid on a percentage basis in proportion to the difference.

The right of cancellation of a purchase in pursuance of the present conditions can only be exercised by the party who has bought the lot in question at Bruun Rasmussen and shall be subject to the presentation of a claim for cancellation in writing to Bruun Rasmussen within 2 years of the purchase date and to the purchased lot being returned to Bruun Rasmussen in the same condition in any and all respects which the purchased lot was in at the time of the lot being knocked down to the buyer.

In the event of cancellation the buyer shall not be entitled to claim payment of interest on the purchase price nor shall the buyer be entitled to claim compensation for any other expenses or loss incurred, including any possible loss of profit in connection with reselling.

It shall not be possible to state cancellation of a purchase in pursuance of the above provisions if:

- a the description on the day the lot was knocked down to the buyer was in accordance with the then generally accepted opinion of scholars and experts;
- b the only way of establishing whether the lot was a forgery at the time of the sale was the implementation of scientific processes, the validity of which was only acknowledged after the time of the sale, or which would have required a disproportionate amount of cost, or which would have been impossible to carry out without damaging the lot in question.

In addition to the time-limits stated above, all purchases are subject to the Statute of Limitations stipulated by Danish law by which Bruun Rasmussen is under no circumstance liable for purchases after 5 years from the date of purchase.

**Bruun Rasmussen Auctioneers**

*Jesper Bruun Rasmussen, auctioneer*

*Jørgen Byriël, officially appointed external supervisor*

## COMMISSION

Bruun Rasmussen undertakes to execute commission bids for bidders who are unable to be present at the auction. It is a prerequisite that Bruun Rasmussen receives the commissions by letter, fax or telephone 24 hours before the start of the auction for the bidders' credit to be checked, if necessary. Bids by the homepage are to be received a minimum of 3 hours before the start of the auction. Bruun Rasmussen is not to be held responsible for any errors that may occur using this service.

## CONDITION REPORTS

Bruun Rasmussen undertakes to provide further information about the state and condition of the lots if possible. This is regarded as a service for customers who are unable to make a personal inspection of the lots at the preview. Bruun Rasmussen stresses that the information given cannot be used as the basis for complaints; complaints can only be based on the description.

## EXEMPTION FROM VAT

Buyers shall, according to § 2, pay full VAT on lots marked with an asterisk (\*).

No Danish VAT is to be paid when VAT registered companies from other EU countries buy at Bruun Rasmussen and resell to private buyers. The private buyer then only has to pay VAT according to the rules in force in the country where the foreign company is VAT registered. For further information please consult your local authorities.

The above is an English translation of the Danish version of the Conditions of Purchase. In case of dispute, only the Danish version of the present Conditions of Purchase of Bruun Rasmussen is valid.



## § 1. BUDGIVNING

Køber er den byder, der får hammerslag. Den, der byder for andre, hæfter som selvskyldnerkautionist for berigtigelsen af købet.

På opfordring fra Bruun Rasmussen Kunstauktioner (herefter benævnt Bruun Rasmussen), skal alle bydere, hvadenten de ønsker at afgive et bud ved personligt fremmøde på auktionsstedet eller afgive en kommission pr. brev, fax eller hjemmeside eller byde direkte pr. telefon eller hjemmeside, kunne dokumentere deres betalingsdygtighed samt til enhver tid identificere sig. Bruun Rasmussen er altid berettiget til at nægte at acceptere et bud, hvis på forlangende ikke tilstrækkelig sikkerhed er stillet eller en passende å conto betaling har fundet sted.

Bud afgives af byderen ved personligt fremmøde på auktionsstedet eller ved skriftlig kommission enten pr. brev, fax eller hjemmeside. På online-auktioner afgives bud direkte fra hjemmesiden. Afgivelse af bud pr. telefon er muligt under visse forudsætninger, der afgøres af Bruun Rasmussen. Bruun Rasmussen påtager sig intet ansvar for eventuelle fejl eller fejlagelser, der måtte opstå ved brug af denne service. Auktionarius bestemmer overbuddets størrelse og træffer ligeledes afgørelse i alle tvivlstilfælde om budgivningen.

For at kunne byde på Bruun Rasmussens auktioner kræves forudgående registrering af byders betalingskort-/kreditkortoplysninger.

## § 2. BETALING

Ved køb på alle traditionelle auktioner tillægges hammerslagsprisen 30% (for vin, mønter og frimærker 25%), der dækker salær på 24% samt moms af salæret.

Ved køb på alle net-auktioner tillægges hammerslagsprisen 25%, der dækker salær på 20% samt moms af salæret.

Visse numre handles efter særlige regler til fuldmoms, så udover auktionsomkostninger på 24% (for net-auktioner, vin, mønter og frimærker dog 20%), beregnes moms på 25% af både hammerslag og auktionsomkostninger. Disse numre er mærket med en stjerne (\*).

Danske momsregistrerede købere skal overfor Bruun Rasmussen oplyse deres SE-/CVR-nr. (moms-nr.), da dette skal anføres på de fakturaer, hvor varen købes i fuld moms.

For visse udenlandske købere gælder der særlige regler for afgiftsfritagelse jvf. § 4. Afgiftsfritagelse omfatter ikke EU private købere, som ligestilles med danske købere jvf. gældende dansk lovgivning om handel med brugte varer, kunstgenstande, samlerobjekter og antikviteter.

Købesummen forfalder til betaling ved tilslaget. Der kan betales kontant op til DKK 50.000 eller med Dankort, banknoteret check, rejsechecks, Visa-, Master-, Diners Club- eller Euro-card. Personlige udenlandske checks kan kun anvendes efter forudgående aftale.

På de traditionelle auktioner i Bredgade skal betaling af købte emner finde sted under eller umiddelbart efter auktionen og under alle omstændigheder senest 8 dage efter fakturadatoen. På net-auktionerne trækkes købesummen automatisk på det af kunden oplyste betalings-/kreditkort i forbindelse med, at det købte emne udtages til transport (ca. 12 timer efter dagens salg). Samtidig tilsendes køber faktura og transportoplysninger.

Betales købesummen ikke rettidigt, skal der svares rente heraf med 1,5% pr. påbegyndt måned.

Betales købesum og renter ikke inden 8 dage efter at Bruun Rasmussen har afsendt påkrav herom til køber, er Bruun Rasmussen berettiget til at annullere købet og bortsælge det købte på ny auktion hos Bruun Rasmussen eller underhånden og afkræve køber ethvert herved opstået tab. Et eventuelt overskud tilfalder den, der har indleveret det købte til auktion.

Har den misligholdende køber tilgodehavender fra salg af effekter hos Bruun Rasmussen, er Bruun Rasmussen berettiget til at berigtige ethvert tilgodehavende hos køber ved modregning.

Har den misligholdende køber indleveret andre effekter til salg, er Bruun Rasmussen berettiget til at bortsælge sådanne effekter på auktion hos Bruun Rasmussen uden at være bundet af en af den misligholdende køber fastsat mindstepris. Den misligholdende køber er ikke berettiget til at kræve udlevering af effekter indleveret til salg, så længe forfalden gæld til Bruun Rasmussen ikke er betalt, uanset om værdien af sådanne effekter må anses at overstige forfalden gæld.

Bruun Rasmussen er berettiget til at afvise bud afgivet af en køber, der er i misligholdelse med sine betalingsforpligtelser over for Bruun Rasmussen eller et bud afgivet af en anden på den pågældendes vegne, ligesom Bruun Rasmussen er berettiget til at kræve et depositum som betingelse for accept af fremtidige bud.

## § 3. FORTRYDELSESRET

A. Ved køb på alle traditionelle auktioner er der ikke fortrydelsesret. Køb kan derfor ikke fortrydes, uanset om budafgivning er via web-kommissionsbud, live-bidding eller på anden vis.

B. For privatkøb af emner på en online-auktion gælder loven om fjernsalg, herunder også 14 dages fortrydelsesret. Eventuelle omkostninger forbundet med transport af købte emner retur fra køber, betales af køber selv.

Såfremt køber benytter sig af sin fortrydelsesret, refunderer Bruun Rasmussen betalingen umiddelbart efter, at varen er sendt retur og modtaget af Bruun Rasmussen. Bruun Rasmussen gør opmærksom på, at det herefter er op til bankerne/kreditkortselskaberne, hvornår refusionen indgår på købers konto.

## § 4. AFGIFTSFRITAGELSE

Udenlandske købere, der opfylder en af nedenstående betingelser, betaler de gældende salærssatser jf. ovenstående, men bliver ikke belastet af dansk moms. Den danske moms deponeres dog hos Bruun Rasmussen, indtil eksporten er gennemført på dokumenteret lovpligtigt vis.

A. Købere, som er momsregistreret i et andet EU-land, kan fritages for at betale dansk moms, når det kan dokumenteres, at købet er transporteret til den adresse, som køber har angivet over for Bruun Rasmussen og som er anført på fakturaen. I sådanne tilfælde skal der afregnes moms i henhold til de gældende regler i det land, hvor virksomheden er momsregistreret. Det tilrådes at søge oplysning hos de lokale myndigheder.

B. Købere med bopæl uden for EU kan fritages for dansk moms, når det kan dokumenteres, at købet er transporteret ud af EU. Bruun Rasmussen udsteder så vidt muligt de fornødne eksportpapirer, som skal fremvises ved toldmyndighederne, og forbeholder sig ret til at opkræve et gebyr herfor.

Foretages eksporten af en af Bruun Rasmussen godkendt speditør skal momsen ikke deponeres. Se listen over godkendte speditører

## § 5. AFGIFTSBETALING

A. Momsregistrerede virksomheder i andre EU-lande kan undlade at gøre brug af muligheden for momsfrigtagelse og i stedet betale dansk brugtmoms/fuldmoms. Dette skal meddeles Bruun Rasmussen inden kl. 10 dagen efter købet.

B. Momsregistrerede virksomheder i Danmark kan vælge at betale fuldmoms jf. ovenstående. Dette skal meddeles Bruun Rasmussen inden kl. 10 dagen efter købet.

## § 6. UDLEVERING

Købesummen skal være betalt, inden det købte kan udleveres til køberen. Det købte henligger fra hammerslaget for købers regning og risiko. For varer, der ikke afhentes ifølge aftale efter hammerslaget, vil blive kørt på fjernlager på købers regning og risiko. Købte varer, der er betalt, men ikke afhentet, vil efter 1 år blive videresolgt for købers regning ved auktion eller underhånden.

## § 7. FORSENDELSE

Såfremt Bruun Rasmussen påtager sig at emballere og fremsende købte varer, sker dette på købers regning og risiko. Bruun Rasmussen kan således ikke drages til ansvar for skader forvoldt på købte varer under forsendelse eller for forsvundne forsendelser.

## § 8. KUNSTNERAFGIFT TIL COPY-DAN <sup>CD</sup>

Ifølge gældende dansk lovgivning om ophavsret skal der opkræves følgeretsvederlag for værker af nyere danske og visse udenlandske kunstnere, som enten er nulevende eller ikke har været døde i mere end 70 år. Følgeretsvederlaget opkræves af Bruun Rasmussen på vegne af kunstneres organisation Copydan. Disse værker er mærket (CD) for Copydan ud for katalognummeret.

Den såkaldte Copydan-afgift tillægges hammerslagsprisen inkl. salær, når beløbet overstiger €300.

Copydan-afgiften er:

- 5% af den del af hammerslagsprisen og salæret (ekskl. moms), der udgør indtil €50.000.
- 3% af den del af hammerslagsprisen og salæret (ekskl. moms), der ligger mellem €50.000 og €200.000.
- 1% af den del af hammerslagsprisen og salæret (ekskl. moms), der ligger mellem €200.000 og €350.000.
- 0,5% af den del af hammerslagsprisen (ekskl. moms), der ligger mellem €350.000 og €500.000.
- 0,25% af den del af hammerslagsprisen (ekskl. moms), der ligger over €500.000.

Copydan-afgiften kan ikke overstige €12.500 for det enkelte kunstværk.

Euro-kursen er fastsat af Copydan i 2016 til kurs 746,02 pr. €100.

## § 9. EKSPORTTILLADELSE

Kulturværdiudvalget er blevet ansøgt om eksporttilladelse, hvor dette kræves iflg. gældende dansk lovgivning om sikring af kulturværdier i Danmark. Foreligger en sådan ikke, vil dette blive meddelt den udenlandske køber umiddelbart efter hammerslaget. Derefter vil Bruun Rasmussen igen ansøge Kulturværdiudvalget på købers vegne, nu hvor prisen kendes. Gives eksporttilladelse ikke, er Kulturværdiudvalget forpligtet til at overtage det købte til den opnåede pris, hvilket betyder at købet bliver hævet for køber.

## § 10. BESKRIVELSE AF EMNER

Alt sælges i den stand, hvori det ved hammerslaget er at forefinde og som beskrevet i katalog eller hjemmeside med senere offentliggjorte ændringer og modifikationer.

Beskrivelsen er foretaget efter bedste overbevisning og under anvendelse af de anførte katalogiseringsprincipper.

De solgte effekter er ofte af en alder eller af en art, der bevirker, at de kan være behæftet med fejl, mangler, restaurering eller beskadigelser, der ikke nødvendigvis angives i katalog eller på hjemmesiden. Afbildninger i katalog eller på hjemmesiden er blot til identifikation og kan ikke anvendes til vurdering af effekternes stand.

Enhver der ønsker at byde på auktion, bør derfor ved selvsyn på de før auktionen afholdte eftersyn forvise sig om de ønskede effekters stand.

Beskrivelsen er udtryk for den på salgstidspunktet blandt lærde og eksperter herskende opfattelse.

Skulle der efter købet opstå tvivl om det købtes ægthed eller dets overensstemmelse med beskrivelsen, skal dette straks meddeles til Bruun Rasmussen.

Såfremt det må erkendes, at det købte er en forfalskning, eller såfremt beskrivelsen har været behæftet med væsentlige fejl, der har medført en væsentlig højere hammerslagspris, end en korrekt beskrivelse må antages at ville have resulteret i, er køber beret-

tiget til at annullere købet, hvorefter den samlede erlagte købesum tillagt auktionsomkostninger og evt. moms, vil blive refunderet køber.

Væsentlige fejl i beskrivelsen relateret til mål eller vægt erstattes kun procentuelt i forhold til differencen.

Retten til under de her anførte betingelser at annullere et køb kan kun udøves af den, der købte den pågældende effekt hos Bruun Rasmussen og er betinget af, at krav om annullering fremsættes skriftligt over for Bruun Rasmussen inden 2 år efter købsdagen, og af at det købte inden samme frist returneres til Bruun Rasmussen i den samme stand i enhver henseende, som det købte var i på hammerslagstidspunktet.

Køber kan i tilfælde af annullering ikke gøre krav på betaling af renter af købesummen og er ej heller berettiget til at kræve anden udgift eller tab, herunder eventuel mistet videresalgfortjeneste, dækket.

Et køb kan ikke kræves annulleret efter ovenstående bestemmelser, såfremt:

- a. beskrivelsen i katalog eller på hjemmesiden på hammerslagsdagen var i overensstemmelse med den på dette tidspunkt gældende opfattelse blandt lærde og eksperter.
- b. den eneste måde til på salgstidspunktet at få fastslået et falskneri var iværksættelsen af videnskabelige processer, hvis gyldighed først blev anerkendt efter salgstidspunktet, eller som ville have været uforholdsmæssigt omkostningskrævende eller uigennemførlige uden beskadigelse af den pågældende effekt.

I tillæg til ovenstående frist gælder de almindelige forældelsesregler i forældelsesloven, efter hvilke køber ikke under nogen omstændigheder kan gøre noget krav gældende over for Bruun Rasmussen, når der er forløbet mere end 5 år fra købsdagen.

Bruun Rasmussen Kunstauktioner  
Jesper Bruun Rasmussen, Auktionsholder  
Jørgen Byriel, Auktionsleder

## KOMMISSIONER

Bruun Rasmussen påtager sig at byde i kommission for bydere, der ikke kan være til stede ved auktionen. Det er en forudsætning, at kommissioner indleveret pr. brev eller fax er Bruun Rasmussen i hænde i 24 timer før auktionens start, så om nødvendigt bydernes kreditværdighed kan undersøges. Via hjemmesiden er denne deadline 3 timer. Bruun Rasmussen påtager sig intet ansvar for eventuelle fejltagelser, der måtte opstå ved brug af denne service

## KONDITIONSRAPPORTER

Bruun Rasmussen påtager sig, hvis det er muligt, at orientere nærmere om numrenes kondition og tilstand. Dette er ment som en service for kunder, der ikke selv har mulighed for ved selvsyn at undersøge numrene på eftersynet. Det understreges, at de givne oplysninger ikke kan gøres til genstand for reklamationer; her henvises til beskrivelsen.

## FRITAGELSE FOR DANSK FULDMOMS

Købere skal ifølge § 2 betale fuldmoms af de varer der i katalog eller på hjemmesiden er markeret med stjerner (\*).

Når virksomheder, der er momsregistrerede i andre EU-lande, køber hos Bruun Rasmussen og videresælger til private, skal der ikke betales dansk moms, men moms i henhold til de regler der gælder, hvor den udenlandske virksomhed er momsregistreret. Det tilrådes at søge oplysning hos de lokale myndigheder.

## ADDRESSES

---

### BRUUN RASMUSSEN AUCTIONEERS

#### COPENHAGEN – BREDGADE

---

BREDGADE 33  
DK-1260 COPENHAGEN K  
Tel +45 8818 1111  
E-mail: [info@bruun-rasmussen.dk](mailto:info@bruun-rasmussen.dk)

#### COPENHAGEN – SUNDKROGSGADE

---

SUNDKROGSGADE 30  
DK-2150 NORDHAVN  
Tel +45 8818 1111  
E-mail: [info@bruun-rasmussen.dk](mailto:info@bruun-rasmussen.dk)

#### COPENHAGEN – BALTIKAVEJ

---

BALTIKAVEJ 10  
DK-2150 NORDHAVN  
Tel +45 8818 1111  
E-mail: [info@bruun-rasmussen.dk](mailto:info@bruun-rasmussen.dk)

#### AARHUS

---

SØREN FRICHS VEJ 34 D  
DK-8230 ÅBYHØJ  
E-mail: [aarhus@bruun-rasmussen.dk](mailto:aarhus@bruun-rasmussen.dk)

#### FYN

---

NADIA SEHESTEDT JUUL  
Tel +45 8818 1183  
E-mail: [nsj@bruun-rasmussen.dk](mailto:nsj@bruun-rasmussen.dk)

#### ONLINE AUCTIONS – SUPPORT

---

BRUUN-RASMUSSEN.DK  
Tel +45 8818 1114  
E-mail: [support@bruun-rasmussen.dk](mailto:support@bruun-rasmussen.dk)

#### REPRESENTATIVES:

---

##### FRANCE

DITTE HERBORG KROGH · PARIS  
Tel +33 6 6185 4564  
E-mail: [dhk@bruun-rasmussen.dk](mailto:dhk@bruun-rasmussen.dk)

##### SOUTHERN FRANCE & LUXEMBOURG

PETER KOCH  
Tel +45 4045 3403  
E-mail: [p.koch@bruun-rasmussen.dk](mailto:p.koch@bruun-rasmussen.dk)

##### ITALY

JEANETTE IDA MØLLER · MILANO  
Tel +39 340 053 9219  
E-mail: [j.moller@bruun-rasmussen.dk](mailto:j.moller@bruun-rasmussen.dk)

##### SPAIN

VAGN ERIK KROGSØE  
Tel +45 2445 1224  
E-mail: [vek@bruun-rasmussen.dk](mailto:vek@bruun-rasmussen.dk)

##### KARIN K.J.V. FRIJS · MARBELLA

Tel +34 630 29 21 02  
Fax +34 952 77 74 64  
E-mail: [k.frijs@bruun-rasmussen.dk](mailto:k.frijs@bruun-rasmussen.dk)

##### THAILAND

ANDERS NORMANN  
Tel +66 818 177 273  
E-mail: [normann@bruun-rasmussen.dk](mailto:normann@bruun-rasmussen.dk)

##### USA

RIKKE STORM · NEW YORK  
Tel +1 917 930 5543  
E-mail: [rs@bruun-rasmussen.dk](mailto:rs@bruun-rasmussen.dk)

##### BENEDICTE HALLOWELL

Tel and Fax +1 617 566 7333  
E-mail: [b.hallowell@bruun-rasmussen.dk](mailto:b.hallowell@bruun-rasmussen.dk)

## CONTACT DIRECTLY

## KONTAKT DIREKTE

### HOVEDNUMMER / MAIN NUMBER

Bruun Rasmussen Auctioneers +45 8818 1111

### ADMINISTRATION

Jakob Dupont, CEO +45 8818 1081  
dupont@bruun-rasmussen.dk

### KUNDESERVICE / CUSTOMER SERVICE

kundeservice@bruun-rasmussen.dk +45 8818 1010  
customerservice@bruun-rasmussen.dk +45 8818 1010

### KOMMISSIONER / COMMISSIONS

Lise Winther Wobido +45 8818 1013  
Anja Bering Hansen +45 8818 1028  
bids@bruun-rasmussen.dk

### BESTILLING AF KATALOGER / CATALOGUE REQUESTS

Kundeservice / Customer service +45 8818 1111

### AUKTIONS RÅDGIVNING / AUCTION GUIDANCE

Franziska Kampmann +45 8818 1026  
fka@bruun-rasmussen.dk

### TRANSPORT / TRANSPORTATION

transport@bruun-rasmussen.dk +45 8818 1055

### VURDERING OG INFORMATION / VALUATION AND INFORMATION

#### INDBOVURDERINGER / VALUATION AT YOUR HOME

David Utzon-Frank +45 8818 1221  
duf@bruun-rasmussen.dk

Kasper Nielsen +45 8818 1121  
kn@bruun-rasmussen.dk

Casper Behrendtzen +45 8818 1235  
cab@bruun-rasmussen.dk

Hans Ruben +45 8818 1231  
hru@bruun-rasmussen.dk

Ralph Lexner +45 8818 1161  
rl@bruun-rasmussen.dk

#### BØGER / BOOKS

Lærke Bøgh +45 8818 1217  
lb@bruun-rasmussen.dk

#### FRIMÆRKER / STAMPS

Lars Godsk Jørgensen +45 8818 1211  
lgj@bruun-rasmussen.dk

#### MØNTER / COINS

Michael Fornitz +45 8818 1201  
mfo@bruun-rasmussen.dk

#### MODERNE DESIGN / MODERN DESIGN

Peter Kjølgaard Jensen +45 8818 1191  
pkj@bruun-rasmussen.dk

Ole Ravn +45 8818 1192  
olr@bruun-rasmussen.dk

#### MODERNE KUNST / MODERN ART

Niels Raben +45 8818 1181  
nr@bruun-rasmussen.dk

Niels Boe Hauggaard +45 8818 1182  
nbh@bruun-rasmussen.dk

#### PORCELÆN, GLAS OG ORIENTALSK KUNSTINDUSTRI / CERAMICS, GLASS AND ORIENTAL WORKS OF ART

Ralph Lexner +45 8818 1161  
rl@bruun-rasmussen.dk

Charlotte Hviid +45 8818 1162  
chv@bruun-rasmussen.dk

#### RUSSISK / RUSSIAN

Martin Hans Borg +45 8818 1128  
mhb@bruun-rasmussen.dk

#### SMYKKER / JEWELLERY

Katrin Mikkelsen Sørensen +45 8818 1174  
kms@bruun-rasmussen.dk

#### SØLV / SILVER

Amalie Hansen +45 8818 1194  
amh@bruun-rasmussen.dk

#### TÆPPER / CARPETS

Henrik Schleppegrell +45 8818 1145  
hsc@bruun-rasmussen.dk

#### VIN / WINE

Morten Stenør Larsen +45 8818 1207  
msl@bruun-rasmussen.dk

#### VÅBEN / WEAPONS

David Utzon-Frank +45 8818 1221  
duf@bruun-rasmussen.dk

#### ÆLDRE KUNST / FINE ART

Kasper Nielsen +45 8818 1121  
kn@bruun-rasmussen.dk

Birte Stokholm +45 8818 1122  
bst@bruun-rasmussen.dk

#### ÆLDRE MØBLER / FURNITURE

Anders Fredsted +45 8818 1142  
afr@bruun-rasmussen.dk

Henrik Schleppegrell +45 8818 1145  
hsc@bruun-rasmussen.dk



## COMMISSION BIDS

### KOMMISSIONSBUD

---

It is possible to leave commission bids if you can not be present at the auction yourself. This service is free of charge.

When leaving a commission bid, you are instructing our customer service to bid up to a specified amount on your behalf.

The situation can occur that another buyer has already bid the same as you were prepared to. Are you then willing to bid further? If not the lot will be sold to another buyer.

If you do not wish to exceed your bid then write "Max", for maximum, next to the amount. You can also allow us to raise your bid by approx. 15% or approx. 25%.

The hammer price may be higher or lower than the estimated price, so it is possible to buy below the estimate. Bruun Rasmussen will always buy at the lowest price possible, as if you yourself had been present at the auction.

All commission bids are strictly confidential.

Commission bids must be submitted no later than **24 hours** prior to the start of the auction.

#### HOW TO MAKE A COMMISSION BID:

---

Complete the commission form with all pertinent information.

Indicate the lot number.

Indicate the amount you are prepared to bid.

Should this amount be the absolute maximum, please write "Max" in the appropriate column.

You can also allow us to bid by up to approx. 15% or approx. 25% more by indicating so.

Sign the commission form and make sure that Bruun Rasmussen receives it **24 hours** prior to the start of the auction.

If the information should be insufficient, Bruun Rasmussen can abstain from bidding. Bruun Rasmussen can not be held responsible for error in bidding or failure to execute bids.

#### INTERNET:

---

Commission bids can be submitted via website [bruun-rasmussen.dk](http://bruun-rasmussen.dk) directly from the page with the item you want to submit a bid for.

Deadline for submissions of bids via the website is **3 hours** prior to the start of the auction.

Submitted bids are shown under "Your bids" when you are logged in. Please contact technical support on +45 8818 1114 for questions about the registration and submission of bids on the website.

For additional information, please consult "Conditions of Purchase" §1.

#### TELEPHONE BIDDING:

---

Should you wish to bid at auction by telephone, please inform Bruun Rasmussen of your name and telephone number, as well as which catalogue numbers you are interested in, no later than **3 hours** prior to the start of the auction. You will then be contacted shortly before the relevant lot comes under the hammer, thereby allowing you to participate without being in the auction room yourself.

For additional information, please consult "Conditions of Purchase" §1.

Det er muligt at afgive kommissionsbud, hvis De ikke selv kan være til stede på auktionens dag. Denne service er gratis.

Når De afgiver en kommission, beder De vores kundeservice på Deres vegne byde op til et af Dem bestemt beløb i hammerslag.

Der kan opstå den situation, at en anden køber allerede har budt det beløb, som De ønsker at afgive. Er De da villig til at gå et bud højere eller er De indforstået med at nummeret sælges til anden side?

Ønsker De ikke at byde højere så skriv "Max" ud for beløbet. Er De i tvivl om hvor højt De vil byde, kan De hæve budet med op til ca. 15% eller ca. 25%.

Salgsprisen kan blive højere eller lavere end vurderingen, så der er også mulighed for at købe til under den angivne vurdering. Vor kundeservice køber altid så billigt som muligt til Dem, som havde De selv været tilstede på auktionen.

Alle kommissioner behandles strengt fortroligt.

Kommissionsbud skal være Bruun Rasmussen i hænde senest **24 timer** før auktionens start.

#### SÅDAN BYDER DE:

---

Udfyld blanketten kommissionsbud med alle oplysninger.

Angiv katalognummer.

Angiv beløbet De ønsker at byde.

Er dette Deres absolutte maximum bedes De anføre "Max" i kolonnen.

De kan også forhøje Deres bud med henholdsvis ca. 15% eller ca. 25%, ved at indikere dette i kolonnen.

De bedes underskrive kommissionsblanketten og sikre Dem, at Bruun Rasmussen modtager den senest **24 timer** før auktionens start.

Hvis Deres oplysninger ikke er tilstrækkelige, kan Bruun Rasmussen undlade at byde for Dem, ligesom Bruun Rasmussen ikke kan gøres ansvarlig for fejl ved budgivningen.

#### INTERNET:

---

Kommissionsbud kan afgives på hjemmesiden [bruun-rasmussen.dk](http://bruun-rasmussen.dk) direkte fra siden med den effekt, De ønsker at byde på.

Seneste afgivelse af bud via hjemmesiden er **3 timer** før auktionens start.

Afgivne bud kan ses på hjemmesiden under "Deres bud", når de er logget ind. Kontakt teknisk support på 8818 1114 for spørgsmål om registrering og budgivning via internettet.

For yderligere information, se "Købskonditioner", §1.

#### TELEFONBUD:

---

Såfremt De ønsker at byde pr. telefon, bedes De oplyse Bruun Rasmussen Deres navn og telefonnummer samt hvilke katalognumre, De ønsker at byde på, senest **3 timer** før auktionens start. De vil så blive ringet op kort før, den aktuelle vare kommer under hammeren, og De kan på denne måde deltage i auktionen uden selv at være til stede.

For yderligere information, se "Købskonditioner" på [bruun-rasmussen.dk](http://bruun-rasmussen.dk) under "Guide".

## COMMISSION BIDS

## KOMMISSIONSBUD

BREDGADE

Skal være Bruun Rasmussen i hænde senest **24 timer** før auktionens start.  
*Must be submitted no later than 24 hours prior to the start of the auction.*

AUKTION NR AUCTION NO: **866**

Navn Name: \* .....

Adresse Address: \* .....

Postnr./by City: \* .....

Land Country: \* ..... Fax: .....

Tel: \* .....

e-mail: ..... CVR-nr. VAT No.: .....

Bank: ..... Konto nr. Acct. No.: .....

Adresse Address: .....

Postnr./By City: ..... Land Country: .....

Tel: ..... Kontaktperson Contact: .....

Obligatoriske felter er mærket med en stjerne \* *Mandatory fields are marked with an asterix \**

Undertegnede giver hermed fuldmagt til Bruun Rasmussen Kunstauktioner A/S om på mine vegne at købe nedennævnte katalognumre så fordelagtigt som muligt, inden for det af mig anførte beløb, i hammerslag.  
*I hereby request that Bruun Rasmussen bid on my behalf on the following lots up at the prices indicated below.*

Undertegnede har udfyldt ovennævnte med de ønskede oplysninger, samt har accepteret købskonditionerne.  
*The undersigned has supplied the required information and agrees to be bound by the conditions of purchase.*

Signatur: \* ..... B.R. kunde-nr. Client No.: .....

Jeg ønsker at modtage salgsresultater på de emner jeg har budt på via email  dagligt  efter auktion  
*I wish to receive sales results on the items I have been bidding on via e-mail every day after the auction*

på e-mail adressen *on this e-mail address:* .....

Katalog nr. Lot. No.	Beskrivelse Description	Bud kr. Bid DKK	Max	+15%	+25%

## BRUUN RASMUSSEN KUNSTAUKTIONER A/S

Bredgade 33 · DK-1260 København K · Tel +45 8818 1111 · Fax +45 8818 1112 · bids@bruun-rasmussen.dk · bruun-rasmussen.dk

Fortsættes næste side *Please turn over*





### MOMS OG KUNSTNERAFGIFT

#### BUYER'S STANDARD PREMIUM

##### 30% AUCTIONEERS' MARGIN SCHEME

---

As of 1 January 1995 new EC regulations came into effect regarding the sale of secondhand goods, works of art, collector's items and antiques; these items may now be traded under the Auctioneers' Margin Scheme.

Under the Auctioneers' Margin Scheme the premium only is subject to VAT, i.e. the hammer price is exempted from VAT. The buyer's premium of 25% will thus henceforth include non-refundable VAT.

##### FULL VAT \*

---

will be charged on goods that cannot be traded under the Auctioneers' Margin Scheme. These lots are marked with an asterisk \*. The buyer pays the auction premium of 24% plus 25% VAT on the hammer price as well as the buyer's premium.

##### BUYER'S REDUCED PREMIUM 24%

---

is paid by buyers fulfilling the following terms/conditions:

1. Danish VAT registered buyers may choose to pay the 24% buyer's premium + 25% VAT on the total amount (Full VAT). The buyer may have the total VAT refunded and thus pays 24% in buyer's premium only.
2. VAT registered buyers in other EU countries may avoid Danish VAT by using their VAT registration number and thereby pay a buyer's premium of 24% only.
3. Residents of countries outside the EU meeting the Danish customs authorities' requirements regarding the export of goods pay the buyer's premium of 24% only (see Conditions of Purchase §3, Exemption from VAT).

##### ARTISTS' ROYALTIES PAYABLE TO COPY-DAN <sup>CD</sup>

---

Pursuant to current Danish legislation on copyright an artists' royalty of 5% of the total price exclusive of VAT (i.e. hammer price plus buyer's premium 24%) shall be collected on works of modern art by all Danish and most foreign artists. These works are marked <sup>CD</sup> for Copy-Dan next to the lot number.

For further information please refer to the Conditions of Purchase.

#### STANDARD AUKTIONSOMKOSTNINGER

##### 30% - BRUGT MOMS

---

1. januar 1995 trådte nye love i kraft i EU vedrørende moms ved handel på auktion med brugte varer, kunstgenstande, samlerobjekter og antikviteter, der nu kan handles til brugt moms.

Efter de nye regler er det kun auktionsomkostninger, der skal tillægges moms, og ikke som tidligere varens fulde pris. I auktionsomkostninger er indregnet ikke fradragsberettiget moms.

##### FULD MOMS \*

---

anvendes for visse varer som ikke kan handles i brugt moms. Disse er mærket med en stjerne \*. Købere skal betale 24% i auktionsomkostninger, hvortil lægges 25% moms af hammerslaget og auktionsomkostningerne.

##### REDUCEREDE AUKTIONSOMKOSTNINGER 24%

---

betales af købere der opfylder følgende betingelser:

1. Danske momsregistrerede købere kan vælge at betale 24% i auktionsomkostninger + 25% moms af hele (fuldmoms). Momsbeløbet kan køber modregne, og betaler derved 24% i auktionsomkostninger.
2. Momsregistrerede købere i andre EU-lande kan, ved at anvende deres EU-momsnr., undgå den danske moms og derved betale 24% i auktionsomkostninger.
3. Alle købere med bopæl i et land uden for EU, der opfylder de danske toldmyndigheders krav i forbindelse med eksport, betaler derved 24% i auktionsomkostninger (se købskonditioner, §4, Afgiftsfrigørelse).

##### KUNSTNERAFGIFT TIL COPY-DAN <sup>CD</sup>

---

Ifølge gældende dansk lovgivning om ophavsret, skal der opkræves 5% i kunstnerafgift af hammerslagsprisen med tillæg af auktionsomkostninger på 24% excl. moms på værker af alle nyere danske og de fleste udenlandske kunstnere. Disse værker er mærket <sup>CD</sup> for Copy-Dan ud for katalognummeret.

For nærmere information henvises til købskonditionerne.





M O D E R N