

FINE ART + ANTIQUES

International auction 866



BRUUN RASMUSSEN

AUCTIONEERS OF FINE ART

FINE ART + ANTIQUES

International auction 866



AUCTION

20 - 22 September 2016

PREVIEW

Thursday	15 September	3 pm - 6 pm
Friday	16 September	11 am - 5 pm
Saturday	17 September	11 am - 4 pm
Sunday	18 September	11 am - 4 pm
Monday	19 September	11 am - 5 pm

or by appointment

NB: "Copenhagen Half Marathon" and "car-free Sunday" will take place on Sunday 18 September. Certain parts of Copenhagen will therefore be closed off.



BRUUN RASMUSSEN

AUCTIONEERS OF FINE ART

Bredgade 33 · DK-1260 Copenhagen K · Tel +45 8818 1111
info@bruun-rasmussen.dk · bruun-rasmussen.com



DAYS OF SALE

FINE ART + ANTIQUES

Tuesday	20 September		
	4 pm	Paintings and drawings	1 - 171
		Books and letters	172 - 188

FINE ART + ANTIQUES

Wednesday	21 September		
	2 pm	Furniture, clocks and bronzes	189 - 325
		Silver	326 - 353
		Ceramics, glass and antiquities	354 - 381
		Oriental carpets	382 - 436
Thursday	22 September		
	4 pm	Jewellery and handbags	437 - 648
		Wristwatches	649 - 690

MODERN ART

Tuesday	27 September		
	4 pm	Modern paintings and sculptures	
Wednesday	28 September		
	2 pm	Modern paintings and sculptures	
		Prints	
		Photographs	

NORDIC DESIGN

Wednesday	28 September		
	4 pm	Silver	
		Ceramics	
Thursday	29 September		
	4 pm	Furniture, lamps and carpets	

DEADLINE FOR CLAIMING ITEMS: WEDNESDAY 12 OCTOBER

Items bought at Auction 866 must be paid no later than eight days from the date of the invoice and claimed on Bredgade 33 by Wednesday 12 October at the latest. Otherwise, they will be moved to Bruun Rasmussen's storage facility at Baltikavej 10 in Copenhagen at the buyer's expense and risk. This transportation will cost DKK 100 per item VAT included, and storage will cost DKK 100 per item per week VAT included.



MALERIER + ANTIKVITETER

International auktion 866



AUKTION

20. - 22. september 2016

EFTERSYN

Torsdag	15. september	kl. 15 - 18
Fredag	16. september	kl. 11 - 17
Lørdag	17. september	kl. 11 - 16
Søndag	18. september	kl. 11 - 16
Mandag	19. september	kl. 11 - 17

eller efter aftale

NB: Søndag den 18. september er der "Copenhagen Half Marathon" og "BilfriSøndag", hvorfor visse dele af København er afspærret.



BRUUN RASMUSSEN

KUNSTAUKTIONER

Bredgade 33 · 1260 København K · Tel +45 8818 1111
info@bruun-rasmussen.dk · bruun-rasmussen.dk

SPECIALISTS IN FINE ART AND ANTIQUES



Paintings, drawings and prints
Birte Stokholm
+45 8818 1122
bst@bruun-rasmussen.dk



Ceramics and Oriental art
Ralph Lexner
+45 8818 1161
rl@bruun-rasmussen.dk



Paintings, drawings and prints
Julie Arendse Voss
+45 8818 1123
jav@bruun-rasmussen.dk



Ceramics, glass and Oriental art
Charlotte Hviid
+45 8818 1162
chv@bruun-rasmussen.dk



Paintings, drawings and prints
Søren K. Holmstrup
+45 8818 1127
skh@bruun-rasmussen.dk



Silver and ceramics
Heidi Schophuus Jensen
+45 8818 1163
hsj@bruun-rasmussen.dk



Books and manuscripts
Lærke Bøgh
+45 8818 1217
lb@bruun-rasmussen.dk



Ceramics and Oriental art
Alexandra Nilsson
+45 8818 1164
ani@bruun-rasmussen.dk



Jewellery and wristwatches
Katrin Mikkelsen Sørensen
+45 8818 1174
kms@bruun-rasmussen.dk



Ceramics and Oriental art
Torben Friis Møller
+45 8818 1165
tfm@bruun-rasmussen.dk



Jewellery and handbags
Lise Jacobsen
+45 8818 1175
lij@bruun-rasmussen.dk



Furniture and carpets
Henrik Schleppegrel
+45 8818 1145
hsc@bruun-rasmussen.dk



Jewellery
Julie Gram
+45 8818 1171
jgm@bruun-rasmussen.dk



Furniture, bronzes and clocks
Anders Fredsted
+45 8818 1142
afr@bruun-rasmussen.dk



Wristwatches
Kristian Haagen
+45 8818 1168
kha@bruun-rasmussen.dk



International relations
Frederik Bruun Rasmussen
+45 8818 1003
fbr@bruun-rasmussen.dk



Silver and branding
Alexa Bruun Rasmussen
+45 8818 1091
alexa@bruun-rasmussen.dk



Director of sales
Kasper Nielsen
+45 8818 1121
kn@bruun-rasmussen.dk

AUKTIONSKALENDER

FINE ART + ANTIQUES

Tirsdag	20. september		
	kl. 16	Malerier og tegninger	1 - 171
		Bøger og breve	172 - 188

FINE ART + ANTIQUES

Onsdag	21. september		
	kl. 14	Møbler, ure og bronzer	189 - 325
		Sølv	326 - 353
		Keramik, glas og antikker	354 - 381
		Orientaliske tæpper	382 - 436
Torsdag	22. september		
	kl. 16	Smykker og dametasker	437 - 648
		Armbåndsure	649 - 690

MODERN ART

Tirsdag	27. september		
	kl. 16	Moderne malerier og skulpturer	
Onsdag	28. september		
	kl. 14	Moderne malerier og skulpturer	
		Grafik	
		Fotografier	

NORDIC DESIGN

Onsdag	28. september		
	kl. 16	Sølv	
		Keramik	
Torsdag	29. september		
	kl. 16	Møbler, belysning og tæpper	

SIDSTE FRIST FOR AFHENTNING: ONSDAG DEN 12. OKTOBER

Effekter købt på auktion 866 skal være betalt senest 8 dage efter fakturadatoen og afhentet i Bredgade 33 senest onsdag den 12. oktober. I modsat fald bliver de transporteret til Bruun Rasmussens lager på Baltikavej 10 i Københavns Nordhavn for købers regning og risiko. Transporten koster 100 kr. pr. effekt inkl. moms, og opbevaringen koster 100 kr. pr. effekt pr. påbegyndt uge inkl. moms.



The Opening of the Preview in Bredgade 33

Thursday 15 September

Saleroom

- 4 pm Lecture "The experimental art scene and artists in Copenhagen in the 1960s and '70s" by artist Peter Bonnén
- 5 pm Reception on the occasion of our expert in modern art Niels Raben's 60th birthday

Friday 16 September

First Floor / Saleroom

- 3 pm Gallery talk "An exquisite bureau by David Roentgen" by expert in antiques Anders Fredsted
- 4 pm Lecture "Muses, fashion and Gerda Wegener" by fashion designer Mark Kenly Domino Tan

Åbningen af eftersynet i Bredgade 33

Torsdag 15. september

Auktionssalen

- Kl. 16 Foredrag "Den eksperimentelle kunstscene og kunstnerne i København i 60'erne og 70'erne" ved billedkunstner Peter Bonnén
- Kl. 17 Reception i anledning af ekspert i moderne kunst Niels Rabens 60-års fødselsdag

Fredag 16. september

1. sal / Auktionssalen

- Kl. 15 Gallery talk "Et udsøgt chatol af David Roentgen" ved ekspert i antikviteter Anders Fredsted
- Kl. 16 Foredrag "Muser, mode og Gerda Wegener" ved modeskaber Mark Kenly Domino Tan





Art Expert Niels Raben Turns 60

On Saturday 20 August our Department head, art expert and auctioneer Niels Raben celebrated his 60th birthday. We will mark the occasion on the opening day of the preview on Thursday 15 September at 5 pm in Bredgade 33 in Copenhagen. Everyone is welcome!

Niels Raben is with his 30 years in the auction business a highly respected art connoisseur, with a deep well of knowledge about a field that spans artwork from 1900 to today.

His knowledge of the auction world, however, goes all the way back to his childhood, since both his grandfather and mother have worked in the business. They were both colleagues of Arne Bruun Rasmussen at the auction house "Winkel & Magnussen," before Arne opened his own auction house in Bredgade. Niels in this way got an early start in a world full of art and antiques.

From Adventure Travel to the Auction Business

Niels holds a masters degree from Copenhagen Business School, where he specialized in tourist economy and worked for some years with organizing adventure trips. In 1985 he was hired as a full time employee at Kunsthallen in Copenhagen, which at the time was the leading auction house in Denmark when it came to modern art. Niels quickly became the right hand of auctioneer Jens Thygesen and was, among others, sent to London twice a year to research new trends in the international auction market. Here he built his vast knowledge of the art market and established contacts within the vast network of artists, collectors and traders, which is absolutely invaluable for working in the auction business. He was and still is particularly interested in contemporary art – CoBrA art in particular – and he has since then met many of the greatest artists in Denmark.

Career Highlights

When Bruun Rasmussen bought Kunsthallen in 2004, Niels was offered a position at the auction house, which he happily accepted. Today, he is head of the department for modern art and mentions the sale in 2005 of Danish actor Ove Sprogø's private art collection as one of the greatest experiences of his career – not least because Niels had followed the evolution of the collection personally. Another highlight of his career was the sale of Pierre Soulages' masterful work "Peinture" (1963), which was sold for DKK 4.5 million in 2015. Here Niels' passion for France comes to light. Prior to the sale, he visited the newly opened "Musée Soulages" in southern France to get a closer look at one of the abstract art's greatest living figures.

Hip Gallery Owners and Private Homes

Niels is generally always on the go and is as comfortable with the hip gallery owners in Manhattan as in the private homes of customers, where he finds exquisite works of art for the upcoming auctions. At the office his colleagues describe him as an exemplary team player that shares his vast knowledge and is driven by an infectious, honest joy and enthusiasm over the great works of art that he and his colleagues work with every day. At the same time, he possesses a great sense of tranquillity and integrity in a hectic working environment, where he with a warm, informal approach to most of the day-to-day challenges manages to spread a positive mood. While his funny and quirky ideas bring a smile to most people's faces – both colleagues and customers.

Privately

Privately, Niels is married to Bente and together they have two children, Christian and Vanessa. He enjoys traveling, skiing, cycling and playing football with KB's "Masters team", where he is a passionate goalkeeper.

Danish Golden Age Paintings and Exquisite Decorative Art

There is no doubt that the art of the Danish Golden Age is part of our auction house's DNA, and this time the period's leading man C. W. Eckersberg is represented with an amusing portrayal from 1844 of a group of exited people trying to squeeze through a single door. Above the door the goddess of justice Justitia can be seen – although the goal of the eager people seems more controlled by chance than justice. Through the door awaits a lottery sale, and perhaps the painting's theme is derived from the fact that Eckerberg's first wife Christine Rebekka Hyssing had a clear hankering for playing the lottery, which caused quite disastrous consequences (cat. no. 40). The selection of Danish Golden Age paintings includes portrait painter C.A. Jensen's picture of the author and hymn writer B.S. Ingemann (cat. no. 9), while P.C. Skovgaard's painting carries the viewer out into the beautiful Danish nature with, for instance, the depiction of the countryside around Fredensborg (cat. no. 11). Other Danish depictions of nature includes the Danish painter Peder Mønsted's large spring motif with newly sprouted beech trees from the forest around the Sæby brook (cat. no. 79). The Danish genre painter Paul Fischer is this time represented with many paintings, in which he portrays the old Copenhagen of more than 100 years ago. One of the paintings depicts a large winter scene with people in the snow in front of the Glyptotek art museum (cat. no. 89).

We move into the higher literary altitudes with an original handwritten letter by the German theologian Martin Luther. The letter was written in 1534 as a recommendation for the priest Baltzer to the bailiffs Joseph Levin von Metzsch and Günter von Bunau in the Meissen district. In this way we begin next year's celebration of the 500th anniversary of the Reformation a little early, since it was Luther's 95 theses on the door of the church in Wittenberg that forever changed Christianity in Europe (cat. no. 179).

A German Louis XVI cylinder bureau with the most beautiful chinoiserie stands out among the antiques. It was made by David Roentgen, who was one of Europe's finest and most uncompromising cabinetmakers in the 1700s. His list of clients includes famous figures from society's elite, such as Marie Antoinette of France and Catherine the Great of Russia (cat. no. 195). From the same century comes a Norwegian gold, rococo vinaigrette from Bergen. With its strong content it was intended to help one of the period's fainting ladies to better endure the tight corset or the odour of church (cat. no. 328). The Norwegian decorative art from the 1700s is also represented with a pair of beautiful, fluted and silver Baroque candlesticks (cat. no. 332).

The catalogue's final pages are dominated by international jewellery from some of the world's leading jewellers. Leading the pack is a wide selection by Cartier, covering a time span from the 1920s until today. The highlights include a pair of Creole ear pendants of platinum with brilliant cut diamonds totalling approximately 5.28 ct. (cat. no. 487), and for the gentlemen there is a pair of rare art deco lapis lazuli cufflinks from 1930 (cat. no. 459). Among the wristwatches you should pay extra attention to the legendary Heuer Autavia ref. 2446H, which is one of the most sought after chronograph watches from the 1960s and one of the very last produced in its series (cat. no. 671).

We hope the selection will be to your liking – we have certainly enjoyed producing the catalogue.


Jesper Bruun Rasmussen



Lot 450



Lot 451



Lot 452

Guldalderskildringer og udsøgt kunstindustri

Ingen tvivl om, at den danske guldalderkunst er en del af vores auktionshus' dna, og denne gang er periodens frontløber C.W. Eckersberg repræsenteret med en morsom skildring fra 1844 af en gruppe ophidsede mennesker i færd med at mase sig igennem en dør. Over døren ses gudinden Justitia – selvom målet for deres ærinde er mere styret af tilfældighed end retfærdighed. Bag døren gemmer sig et lotteriudsalg, og måske er maleriets tema afledt af, at Eckersbergs første hustru Christine Rebekka Hyssing havde udpræget hang til at spille på lotteriet, hvilket fik ganske alvorlige konsekvenser (kat.nr. 40). Blandt guldalderværkerne ses også portrætmaleren C.A. Jensens skildring af forfatteren og salmedigteren B.S. Ingemann (kat.nr. 9), mens vi med P.C. Skovgaard bliver ført ud i den smukke danske natur, f.eks. i værket af museumsklasse fra egnen omkring Fredensborg (kat.nr. 11). Af andre danske naturskildringer bør nævnes den lidt senere danske maler Peder Mønstedts store forårsmotiv med nyudsprungne bøgetræer fra skoven ved Sæby Å (kat.nr. 79). Den danske genremaler Paul Fischer er denne gang repræsenteret med mange malerier, hvor han skildrer det gamle København for mere end 100 år siden, f.eks. det store vintermotiv med personer i sneen foran Glyptoteket (kat.nr. 89).

Vi bevæger os op i de højere litterære luftlag med et originalt håndskrevet brev af den tyske teolog Martin Luther, skrevet i 1534 som en anbefaling af præsten Baltzer til fogederne Joseph Levin von Metzsch og Günter von Büнау i Meissen-distriktet. Vi foregriber dermed næste års markering af 500-året for Reformationen, da det netop var Luthers 95 teser på porten til kirken i Wittenberg, der for altid ændrede kristendommen i Europa (kat.nr. 179).

Et tysk Louis XVI-cylinderbureau med de smukkeste kineserier skiller sig ud blandt antikviteterne. Det er udført af David Roentgen, der var en af Europas fremmeste og mest kompromisløse møbelsnedkere i 1700-tallet. På sin kundeliste kunne han skrive personligheder fra samfundets elite, ikke mindst Marie Antoinette af Frankrig og Katarina den Store af Rusland (kat.nr. 195). Fra samme århundrede stammer et norsk rokokko-hovedvandsæg af guld fra Bergen, der med sit stærke indhold har haft til formål at hjælpe en af tidens dånende kvinder til bedre at kunne udholde det stramme korset eller kirkens odeur (kat.nr. 328). 1700-tallets norske kunsthåndværk er også repræsenteret med et par smukke ligeknækkede sølvbarokstager af mesteren Marcus Møller fra Christiania (Oslo) (kat.nr. 332).

På katalogets sidste sider domineres billedet af international smykkekunst fra nogle af verdens førende juvelerer. I front ses et stort udvalg fra Cartier, der dækker et tidsmæssigt spænd fra 1920'erne og frem til i dag. Højdepunkterne tæller et par Creoler-ørestikker af platin med brillantslebne diamanter på i alt ca. 5.28 ct. (kat.nr. 487) og til herrerne et par sjældne art deco lapis lazuli-manchetknapper fra 1930 (kat.nr. 459). Blandt armbåndsurene bør man særligt hæfte sig ved det legendariske Heuer Autavia ref. 2446H, der er et af de mest eftertragtede kronografure fra 1960'erne og samtidig et af de absolut sidst producerede i sin serie (kat.nr. 671).

Vi håber udvalget falder i alles smag – vi har i hvert tilfælde nydt at producere kataloget!



Jesper Bruun Rasmussen



Lot 690



Lot 649

JEWELLERY
HANDBAGS

Thursday 22 September 4 pm

Lot 437 - 648





437

OLE LYNGGAARD

A pearl necklace set with cultured freshwater pearls and an "Elephant" diamond clasp set with a brilliant-cut diamond weighing app. 0.10 ct., mounted in 14k satinated gold. Colour: Wesselton (H). Clarity: VS. Pearl diam. app. 7.5-10.0 mm. L. app. 42 cm. H. clasp app. 2 cm.

Accompanied by original case.

DKK 10,000-12,000 / € 1,350-1,600

438

OLE LYNGGAARD

A diamond clasp in the shape of a heart set with numerous brilliant-cut diamonds weighing a total of app. 1.07 ct., mounted in 18k white gold. Colour: Top Wesselton (G) Clarity: VS. L. app. 1.5 cm. Ca. 2012.

Accompanied by original case. DKK 12,000 / € 1,600

439

A diamond ring set with numerous brilliant-cut diamonds weighing a total of app. 1.47 ct., mounted in 14k gold and white gold. Colour: Top Wesselton (G). Clarity: VS. Weight app. 14.5 g. Size 61. Circa 2005.

DKK 10,000 / € 1,350

440

OLE LYNGGAARD

A moonstone and diamond pendant "Emeli" set with an oval cabochon moonstone and numerous brilliant-cut diamonds weighing app. 0.14 ct., mounted in 18k gold and white gold. Colour: Top Wesselton (G). Clarity: VS. Adjustable cord of green silk. L. pendant app. 2.5 cm. Circa. 2012.

Accompanied by original jewellery bag.

Retail price ca. DKK 40.000.

DKK 12,000-15,000 / € 1,600-2,000

441

KLARLUND

A diamond ring set with a brilliant-cut diamond weighing app. 1.01 ct. flanked by numerous brilliant-cut diamonds, totalling app. 1.41 ct., mounted in 18k gold. Colour: Top Wesselton (F). Clarity: VS-SI1. Cut-grade: Excellent. Size 52. Circa 2008.

Retail price app. DKK 100.000.

Accompanied by GIA certificate no. 15714455 from 2007 and original case. DKK 25,000 / € 3,350

442

OLE LYNGGAARD

A bracelet with a charm and a diamond clasp in the shape of a star set with a brilliant-cut diamond, mounted in 14k satinated gold. Colour: Wesselton (H). Clarity: VS. L. app. 18.5 cm. Weight app. 36 g.

Accompanied by original case.

DKK 10,000-12,000 / € 1,350-1,600

443

PETER WONG

A bracelet of 18k gold. L. app. 20 cm. Weight app. 44 g.

Accompanied by original case.

Purchased at Reeslev, Copenhagen.

DKK 10,000-12,000 / € 1,350-1,600



437



438



439



440



441



442



443



444

OLE LYNNGAARD

A long necklace with pendants in the shape of fruits and a "Plum" clasp set with a brilliant-cut diamond weighing app. 0.02 ct., mounted in 14k gold. Colour: Wesselton (H). Clarity: VS. The necklace can be separated into two necklaces. L. app. 80 cm. Total weight app. 44 g. Design Charlotte Lynggaard. *Accompanied by original case.*

DKK 12,000-15,000 / € 1,600-2,000

445

VAN CLEEF & ARPELS

A lapis lazuli and diamond ring set with carved lapis lazuli and numerous brilliant-cut diamonds, mounted in 18k gold. Size 51. Ca. 2000.

DKK 10,000 / € 1,350

446

OLE LYNNGAARD

A five-strand onyx necklace with numerous beads of onyx and a diamond clasp set with a brilliant-cut diamond weighing app. 0.06 ct., mounted in 14k gold and white gold. Colour: Wesselton (H). Clarity: VS. Diam. clasp app. 2.4 x 2.0 cm. L. necklace app. 40 cm.

Accompanied by original case.

DKK 10,000-12,000 / € 1,350-1,600

447

A diamond ring set with an old-cut diamond weighing app. 0.75 ct. flanked by numerous single-cut diamonds, mounted in 18k gold and white gold. One diamond missing. Size 56.5. Rome, circa 2000.

DKK 15,000 / € 2,000

448

CHOPARD

A necklace with a diamond pendant in the shape of "Mickey Mouse" set with a brilliant-cut diamond and a circular-cut ruby and sapphire, mounted in 18k gold. L. pendant app. 4 cm. L. necklace app. 42 cm. Total weight app. 22 g.

DKK 18,000-20,000 / € 2,400-2,700

449

VAN CLEEF & ARPELS

An "Alhambra" bracelet set with carved white mother-of-pearl, mounted in 18k gold. L. app. 19 cm.

Designed in 1968, the iconic motif rapidly became an emblem of Van Cleef & Arpels and is a symbol of luck, health, fortune, and love. *DKK 25,000 / € 3,350*



444



446



445



447



448



449



450 ^{CD}

ARJE GRIEGST

An opal and emerald necklace set with a boulder opal, cabochon emeralds and trilliant-cut diamonds, mounted in 24k gold. Adjustable. Signed Arje Griegst, 24k gold.

DKK 25,000 / € 3,350

451 ^{CD}

ARJE GRIEGST

A sapphire and diamond necklace set with a cabochon sapphire and old-cut diamonds, mounted in 18k gold. L. necklace app. 50 cm. L. pendant app. 4 cm. 1986.

DKK 25,000 / € 3,350

452

ARJE GRIEGST

A rare opal and tourmaline ring "Sunrise Pillar" set with an oval-cut opal, a rough tourmaline crystal and numerous brilliant-cut diamonds, mounted in 20k gold. H. app. 3.5 cm. Size 54. Signed. Weight app. 24 g. Made for Georg Jensen Silver Smithy, Paris, 1963-64.

The ring is made by the cire perdue technique in order to achieve a greater artistic expression, and this technique gave Arje Griegst a greater flexibility in positioning the stones that he would have had in the traditional gold smithing.

Cire perdue is a traditional method for casting bronze sculptures, and is unusual in jewelry making.

Depicted and described in Kerstin Wickman: "Arje Griegst. Guldsmed, designer og billedhugger // Goldsmith, Designer and Sculptor", Forlaget Vandkunsten, 2013, pp. 2, 66 og 79.

Henrik Sten Møller: "Arje Griegst - en verden i guld // - a world in gold", Forlaget Rhodos, 1982, pp. 44-45.

DKK 100,000 / € 13,500



450

451

452



453

An amethyst necklace set with cabochon amethysts, mounted in silver. Design no. 4. L. app. 43 cm. Georg Jensen, circa 1907-14.

DKK 10,000-12,000 / € 1,350-1,600

454

A necklace with an amber pendant set with cabochon amber, mounted in silver. Design no. 51. L. pendant app. 8.6 cm. L. necklace app. 62 cm. Georg Jensen, 1915-30.

DKK 10,000-12,000 / € 1,350-1,600

455

GEORG JENSEN

A chrysopras and amber brooch set with cabochon chrysopras and amber. Design no. 131. L. app. 7 x 4.5 cm. Georg Jensen, 1915-1930.

Similar depicted in David A. Taylor: "Georg Jensen Jewellery". 2005, p. 68.

DKK 10,000-12,000 / € 1,350-1,600

456

GEORG JENSEN

A chrysopras and amber brooch set with cabochon chrysopras and amber mounted in silver. Design no. 98. L. app. 8.5 x 6.5 cm. 1915-30.

Similar depicted in David A. Taylor: "Georg Jensen Jewellery", 2005, p. 221.

DKK 10,000-12,000 / € 1,350-1,600

457

GEORG JENSEN

A malachite and amber brooch set with cabochon malachite and amber, mounted in silver. L. app. 5 cm. W. app. 4.8 cm. Design no. 13. 1904-8.

Similar depicted in Janet Drucker, "Georg Jensen - A Tradition of splendid Silver", 1997, p. 127.

DKK 10,000-12,000 / € 1,350-1,600



453



454



455



456



457



458

A diamond necklace set with numerous brilliant-cut diamonds weighing a total of app. 9.14 ct., mounted in 18k white gold. Colour: Top Cape (K). Clarity: VVS-VS. L. app. 40 cm. Rome, ca. 1994.

Accompanied by certificate.

DKK 50,000-60,000 / € 6,700-8,050

459

CARTIER

A pair of rare Art Deco lapis lazuli cufflinks each set with fancy-cut lapis lazuli, mounted in silver. L. app. 3.5 cm. Signed and stamped Cartier Paris BTESGDG. Paris, circa 1930. (2)

Accompanied by original case.

DKK 10,000-12,000 / € 1,350-1,600

460

CARTIER

"La Dona" ring of 18k white gold. Serial no. FA2436. Ref. no. B4067600. Signed. Size 56. Cartier, Paris.

Accompanied by original case.

DKK 10,000-12,000 / € 1,350-1,600

461

CARTIER

A diamond solitaire ring set with a brilliant-cut diamond weighing app. 0.54 ct., mounted in platinum. Serial no. BVG441. Size 53. GIA inscription.

Accompanied by original case. DKK 20,000 / € 2,700

462

CARTIER

"Maillon Panthère" ring of 18k white gold. Serial no. 53738B. Ref. no. N4007800. Size 60. Signed Cartier, Paris.

Accompanied by original case.

DKK 10,000-12,000 / € 1,350-1,600

463

CARTIER

A Panthère "Gentiane" bracelet of 18k white gold. Serial no. X 1603. Ref. no. 60083368. L. app. 19 cm. Weight app. 52 g.

Accompanied by original case.

Purchased at Cartier, 13 Rue de la Paix, Paris.

DKK 30,000-40,000 / € 4,050-5,400



458



459



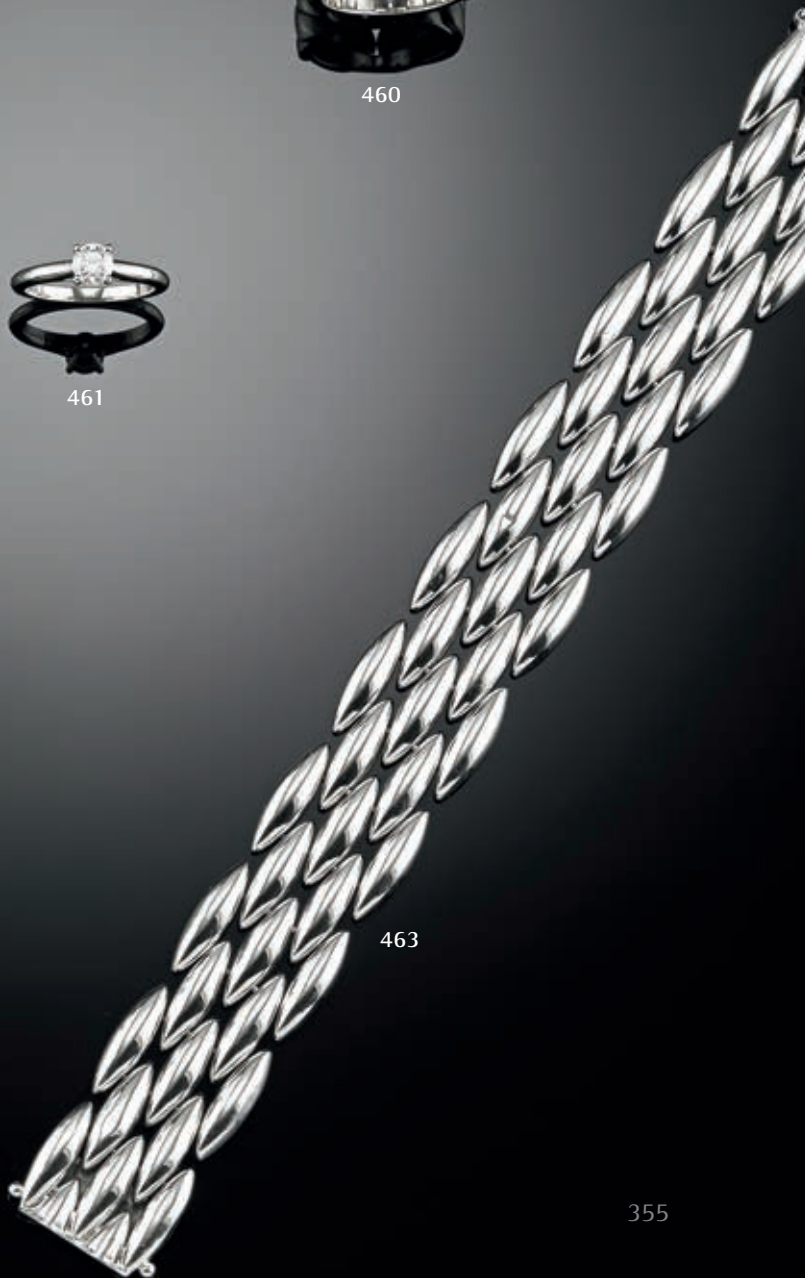
460



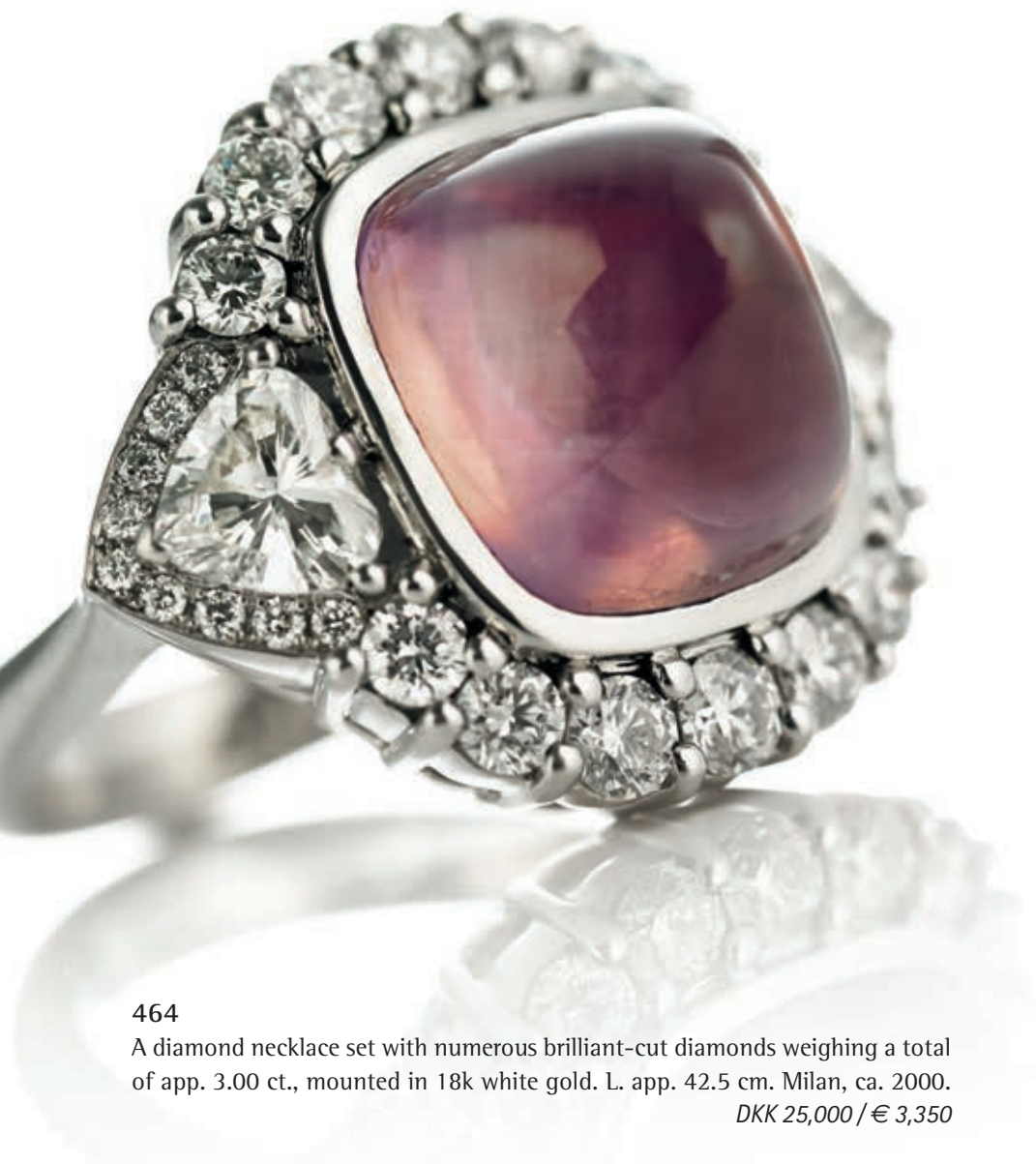
461



462



463



464

A diamond necklace set with numerous brilliant-cut diamonds weighing a total of app. 3.00 ct., mounted in 18k white gold. L. app. 42.5 cm. Milan, ca. 2000.

DKK 25,000 / € 3,350

465

A diamond brooch in the shape of a flower set with numerous single, baguette and old-cut diamonds, mounted in platinum. L. app. 6.2 x 5.0 cm. Weight app. 40 g. Circa 1940-50.

DKK 30,000 / € 4,050

466

WIN

A pink sapphire and diamond ring set with a natural pink cushion sugarloaf cabochon sapphire weighing app. 15.57 ct. encircled and flanked by two heart-shaped and numerous brilliant-cut diamonds weighing a total of app. 2.38 ct., mounted in platinum. Colour: Top Wesselton (F-G). Clarity: VVS. Size 54. Circa 2012.

Accompanied by GIA certificate no. 6152495155 indicating "No indications of heating". 2013.

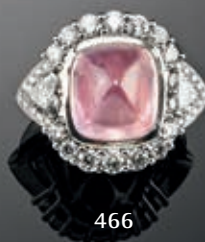
DKK 200,000-250,000 / € 27,000-33,500



464



465



466



467

A long pearl necklace with cultured baroque freshwater pearls and a diamond clasp set with brilliant-cut diamonds, mounted in 14k gold. Pearl diam. app. 15 x 20-28 mm. L. app. 86.5 cm. Milan, circa 2008. *DKK 10,000-12,000 / € 1,350-1,600*

468

OLE LYNNGAARD

A diamond pendant "Twig" set with numerous brilliant-cut diamonds weighing a total of app. 0.56 ct., mounted in 18k partly satinated white gold. Colour: Top Wesselton (G). Clarity: VS. L. app. 11 cm. Circa 2012.

Accompanied by original jewellery bag.

Retail price app. DKK 52.500. DKK 15,000 / € 2,000

469

A pair of diamond ear studs each set with a brilliant-cut diamond weighing app. 1.09 and 1.16 ct. totalling app. 2.25 ct., mounted in 18k white gold. Colour: Top Wesselton (G), Clarity: VVS. Milan, circa 2010. (2)

Accompanied by certificates no. 40210 and 40211. Milan, circa 2016. DKK 60,000-70,000 / € 8,050-9,400



470

A tourmaline and diamond ring set with an oval-cut tourmaline flanked by numerous brilliant-cut diamonds, mounted in 18k white gold. Colour: Top Wesselton (F-G). Clarity: VS-SI. Size 52. Rome, circa 1990. *DKK 12,000-15,000 / € 1,600-2,000*

471

A diamond ring set with numerous brilliant-cut diamonds weighing app. 1.60 ct., mounted in 18k white gold. Colour: Top Wesselton (F). Clarity: VS. Size 53. Rome, circa 2011.

DKK 18,000-20,000 / € 2,400-2,700

472

A sapphire and diamond ring set with a circular-cut pink sapphire encircled and flanked by numerous brilliant-cut diamonds, mounted in platinum. Size 55. Circa 2000.

Accompanied by case.

Purchased at Kære Ven, 2000.

DKK 10,000-12,000 / € 1,350-1,600

473

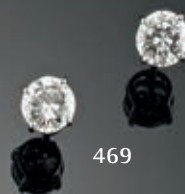
A diamond bracelet set with numerous brilliant-cut diamonds weighing a total of app. 2.50 ct., mounted in 14k white gold. L. app. 17.5 cm. Milan, circa 2000. *DKK 20,000 / € 2,700*



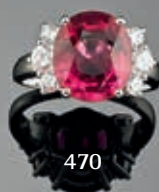
467



468



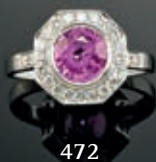
469



470



471



472



473



474

A South Sea pearl necklace set with cultured South Sea pearls with a clasp of 14k white gold. Pearl diam. app. 11.85 -17.50 mm. L. app. 45 cm. Circa 2010. *DKK 15,000-18,000 / € 2,000-2,400*

475

OLE LYNNGAARD

A diamond pendant "Lace" set with numerous brilliant-cut diamonds weighing a total of app. 0.11 ct., mounted in 14k white gold. Colour: Top Wesselton (G). Clarity: VS. L. app. 3.5 cm. Design Charlotte Lynggaard.

Accompanied by original jewellery bag.

Retail price app. DKK 29.500. DKK 10,000 / € 1,350

476

LEANDRO LEONI

A pair of South Sea pearl and diamond ear pendants each set with a cultured South Sea pearl and numerous brilliant-cut diamonds weighing a total of app. 1.20 ct., mounted in 18k white gold. Pearl diam. app. 14.9 mm. L. app. 2.5 cm. Florence, circa 2008. (2) *DKK 20,000 / € 2,700*

477

RECARLO

A diamond eternity ring set with numerous brilliant-cut diamonds, mounted in 18k white gold. Colour: Top Wesselton (F-G). Clarity: VVS-VS. Size 56. Rome, circa 2012.

DKK 18,000-20,000 / € 2,400-2,700

478

A pair of South Sea pearl and diamond ear pendants each set with a cultured South Sea pearl and a brilliant-cut diamond weighing a total of app. 0.58 ct., mounted in 18k white gold. Colour: Top Wesselton-Wesselton (G-H). Clarity: VS-SI. Pearl diam. app. 15.2 mm. L. app. 2 cm. Milan, circa 2010. (2)

DKK 15,000 / € 2,000

479

OLE LYNNGAARD

A diamond ring "Prism" set with numerous brilliant-cut diamonds weighing a total of app. 0.36 ct., mounted in 18k white gold. Colour: Top Wesselton (G). Clarity: VS. Size 60.5. Circa 2012.

Accompanied by original jewellery bag.

Retail price app. DKK 47.500. DKK 12,000 / € 1,600

480

A diamond bracelet "Tutti Frutti" set with numerous oval, pear, cabochon and circular-cut rubies, sapphires, emeralds, amethysts, tsavorites, citrines and brilliant-cut diamonds, mounted in 18k white gold. Colour: Top Wesselton-Wesselton (F-H). Clarity: VS-SI1. L. app. 18 cm. Weight app. 52 g. England, circa 1990.

Accompanied by case.

DKK 40,000-50,000 / € 5,400-6,700



474



475



476



478



477



479



480



481

An Art Deco diamond brooch set with numerous rose, single and old-cut diamonds, mounted in platinum. L. app. 3.0 x 6.0 cm. Rome, circa 1920-30.

DKK 15,000 / € 2,000

482

A diamond brooch in the shape of a flower set with numerous brilliant and single-cut diamonds, mounted in 18k white gold. L. app. 7 cm. Circa 1950.

DKK 8,000-10,000 / € 1,100-1,350

483

A diamond ring set with numerous brilliant-cut diamonds weighing a total of app. 0.65 ct., mounted in 18k white gold. Colour: River (D-E). Clarity: VVS1. Size 58. Rome, circa 2010.

DKK 10,000-12,000 / € 1,350-1,600

484

G Ü B E L I N

An emerald and diamond jewellery set comprising a pair of ear clips and a brooch set with oval cabochon emeralds and numerous brilliant-cut diamonds, mounted in 18k white gold. L. brooch app. 10.2 cm. L. ear pendants app. 7.3 or 1.6 cm. L. bracelet app. 15.0 or 18.5 cm. The jewellery set may also be used as a bracelet and a pair of ear pendants. Signed E. Gübelin Paris No. 1376. Paris, circa 1940-1950. (7)

Accompanied by jewellery case and screwdriver.

DKK 100,000-125,000 / € 13,500-17,000



482



481



483



484



485

A diamond necklace set with numerous brilliant-cut diamonds weighing a total of app. 10.00 ct., mounted in 18k white gold. Colour: Top Wesselton-Wesselton (G-H). Clarity: VS-SI1. L. app. ca. 40 cm. London, circa 2005.

Accompanied by original case.

DKK 50,000-60,000 / € 6,700-8,050

486

A pair of diamond ear studs each set with a brilliant-cut diamond weighing app. 1.50 ct., totalling app. 3.00 ct., mounted in 18k white gold. Colour: Top Cape (K). Clarity: VS1. Rome, circa 2010. (2)

DKK 75,000 / € 10,000

487

CARTIER

A pair of diamond ear pendants "Creoles" each set with numerous brilliant-cut diamonds weighing a total of app. 5.28 ct., mounted in platinum. Diam. app. 2.5 cm. Signed Cartier. Serial no. 633567. Reference no. 8002100. (2)

Accompanied by original case.

DKK 100,000 / € 13,500

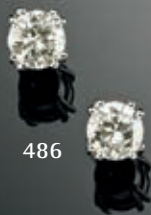
488

A diamond ring set with a brilliant-cut diamond weighing app. 5.01 ct. flanked by numerous brilliant-cut diamonds, weighing a total of app. 6.51 ct., mounted in 18k white gold. Colour: Top Cape (L). Clarity: VS. Size 56. Circa 2012.

DKK 300,000 / € 40,500



485



486



487



488



489

A Belle Époque sapphire and diamond pendant set with a circular-cut sapphire, old and rose-cut diamonds and square-cut rubies, mounted in platinum and gold. L. necklace app. 38 cm. L. pendant app. 3 cm. Circa 1910. *DKK 15,000 / € 2,000*

490

A pair of sapphire and diamond ear clips each set with a cabochon sapphire weighing a total of app. 2.60 ct. and numerous brilliant-cut diamonds weighing a total of app. 6.40 ct., mounted in 18k white gold. Colour: Top Wesselton (F-G). Clarity: VS. Rome, circa 1960-70. (2)

DKK 35,000-40,000 / € 4,700-5,400

491

A sapphire and diamond brooch set with numerous circular-cut sapphires and single and brilliant-cut diamonds, mounted in 18k white gold. L. app. 5 cm. Rome, circa 1950. *DKK 15,000 / € 2,000*

492

A sapphire and diamond ring set with a natural oval-cut sapphire weighing app. 3.87 ct., encircled by numerous brilliant-cut diamonds weighing app. 1.10 ct., mounted in 18k white gold. Colour: Top Wesselton-Wesselton (G-H). Clarity: VS-SI1. Size 50. Milan, circa 2005.

Accompanied by Gisgem report no. 3750 indicating "No indication of heating". 2016.

DKK 50,000-60,000 / € 6,700-8,050

493

A sapphire and diamond ring set with a cushion-cut sapphire weighing app. 4.39 ct. flanked by numerous brilliant-cut diamonds weighing a total of app. 1.05 ct., mounted in 18k white gold. Colour: Top Wesselton (G). Clarity: VVS-VS. Size 52.5. Circa 2010.

DKK 20,000 / € 2,700

494

A sapphire and diamond ring set with an oval-cut sapphire weighing app. 4.98 ct. encircled by numerous brilliant-cut diamonds weighing a total of app. 2.35 ct., mounted in 18k white gold. Colour: Top Wesselton-Top Crystal (F-I). Clarity: VS-SI. Size 55.5. Rome, circa 2008.

DKK 20,000-25,000 / € 2,700-3,350

495

A sapphire and diamond bracelet set with oval-cut sapphires weighing a total of app. 1.40 ct. and brilliant and single-cut diamonds weighing a total of app. 2.75 ct., mounted in 18k white gold. L. app. 18.5 cm. Milan, circa 1980.

DKK 18,000-20,000 / € 2,400-2,700



489



490



491



492



493



494



495



496

A diamond brooch/clip set with numerous old, single and rose-cut diamonds, mounted in 18k white gold. L. app. 7 x 3.6 cm. England, circa 1940-50.

DKK 40,000 / € 5,400

497

A pair of natural pearl and diamond ear pendants each set with natural pearls and numerous old and single-cut diamonds, mounted in 18k white gold. Pearl diam. app. 6.90 x 9.80 and 9.00 mm. L. app. 6.2 cm. Milan, circa 1910. (2)

Accompanied by Gisgem report no. 3733 indicating "Natural pearls".

DKK 70,000-80,000 / € 9,400-11,000

498

A diamond ring set with a brilliant-cut heart-shaped diamond weighing app. 5.00 ct. flanked by two trilliant-cut diamonds each weighing app. 0.61 ct., totaling app. 6.22 ct., mounted in 18k white gold. Size 53. Italy, circa 1990-2000.

DKK 200,000 / € 27,000

499

W I N

A sapphire and diamond ring set with a natural cushion-cut sapphire weighing app. 13.02 ct. flanked by numerous baguette-cut diamonds weighing a total of app. 1.25 ct., mounted in 18k white gold. Colour: Top Wesselton (F-G). Clarity: VVS. Size 53.

Accompanied by certificate/report no. 15090263 from Gübelin indicating "No indications of heating (NTE) "

DKK 100,000-150,000 / € 13,500-20,000



496



497



498



499



500

A sapphire and diamond brooch set with a natural cabochon star sapphire from Burma weighing app. 19.40 ct. encircled by numerous old-cut diamonds, mounted in gold and silver. Diam. app. 2.8 cm. London, circa 1910.

Accompanied by certificate no. 57752493 from Gemmological Certification Services indicating "No indication of heating". DKK 70,000-80,000 / € 9,400-11,000

501

An Art Deco diamond ring set with an old-cut diamond weighing app. 3.35 ct. flanked by numerous single-cut diamonds, mounted in 18k white gold. Colour: Top Cape (L). Clarity: VVS. Size 51. Rome, circa 1930.

Accompanied by certificate no. 22426 from Istituto Gemmologico Nazionale. DKK 100,000 / € 13,500

502

An Art Deco sapphire and diamond bracelet set with numerous natural oval-cut Ceylon sapphires weighing a total of app. 3.00 ct. and numerous old-cut diamonds, mounted in platinum. L. app. 18 cm. France, circa 1930.

Accompanied by Gemmological Certification Services certificate no. 57765876 indicating "No indications of heating". 2016. DKK 200,000 / € 27,000



500



501



502



503

A Belle Epoque diamond necklace set with an old-cut diamond weighing app. 1.55 ct. and numerous rose and old-cut diamonds, mounted in platinum. Colour: Top Wesselton (F-G). Clarity: VVS. L. necklace app. 44 cm. L. pendant app. 2 cm. Circa 1900-1910. DKK 30,000 / € 4,050

504

A Belle Epoque diamond necklace set with an old-cut diamond weighing app. 0.75 ct. and numerous old and rose-cut diamonds, mounted in platinum and gold. L. necklace app. 38 cm. L. pendant app. 4.5 cm. Circa 1900-1910.

DKK 15,000-18,000 / € 2,000-2,400

505

A diamond pendant in the shape of a leaf set with numerous rose-cut diamonds, mounted in gold and silver. L. app. 4 cm. Circa 1890-1900.

DKK 30,000 / € 4,050

506

An opal and diamond brooch set with a cabochon opal encircled by numerous old-cut diamonds, mounted in gold and silver. Diam. app. 2.5 cm. Circa 1910.

DKK 20,000-25,000 / € 2,700-3,350

507

A Belle Epoque pearl and diamond pendant/choker set with presumably natural pearls and rose-cut diamonds, mounted in platinum and gold. L. app. 7.8 x 5.4 cm. Nikolaus Trübner, court jeweler in Heidelberg 1849-1910. Unmarked. Circa 1900-1910.

The pendant can also be used as a belt buckle.

Provenance: Princess Amilie of Löwenstein-Wertheim-Freudenberg (1883-1978), married to Count Otto Friedrich af Castell-Castell. This couple were parents-in-law to Princess Alexandrine-Louise of Denmark, daughter of Prince Harald of Denmark, who was a younger brother of King Christian X of Denmark. Hence Countess Amilies' relatives until today.

DKK 15,000-20,000 / € 2,000-2,700

508

A pearl and diamond brooch in the shape of a bee set with a natural pearl, rose and old-cut diamonds, an oval cabochon garnet and cabochon emeralds, mounted in gold and silver. L. app. 3.0 x 4.2 cm. London, circa 1910.

Accompanied by certificat no. 09186 from The Gem & Pearl Laboratory indicating "Natural Pearl".

DKK 18,000-20,000 / € 2,400-2,700

509

CHARLES PACKER & CO.

A pearl and diamond brooch set with three presumably natural pearls and numerous old-cut diamonds, mounted in gold and silver. Pearl diam. app. 4.74 - 5.95 mm. L. app. 9.5 cm. Weight app. 13.3 g. London, circa 1900-1910.

Accompanied by original case. DKK 15,000 / € 2,000



504

503



505



506



507



508



509



510

A Tahiti pearl necklace set with cultured Tahiti pearls and an emerald clasp set with numerous circular-cut emeralds, mounted in 18k gold. Pearl diam. app. 10.0-11.8 mm. L. app. 42 cm. Circa 2011.

DKK 15,000 / € 2,000

511

A pair of Tahiti pearl and diamond ear pendants each set with a cultured Tahiti pearl and numerous brilliant-cut diamonds, mounted in 18k white gold. Pearl diam. app. 10.8 mm. L. app. 5.3 cm. Later pearl. Turin, circa 1950. (2)

Accompanied by jewellery bag.

DKK 18,000-20,000 / € 2,400-2,700

512

A pair of South Sea pearl and diamond ear pendants each set with a cultured South Sea pearl and numerous brilliant-cut diamonds, mounted in 18k white gold. Colour: Top Wesselton (F-G). Clarity: VS-SI1. Pearl diam. app. 1.37 mm. L. app. 2.5 cm. Rome, circa 2000. (2)

DKK 12,000-15,000 / € 1,600-2,000

513

T I F F A N Y & C O .

An aquamarine and diamond ring "Soleste" set with a circular-cut aquamarine weighing app. 0.70 ct. encircled by numerous brilliant-cut diamonds weighing a total of app. 0.43 ct., mounted in platinum. Colour: Top Wesselton (G). Clarity: VVS-VS. Size 56. Rome, circa 2010.

Accompanied by original case.

DKK 20,000-25,000 / € 2,700-3,350

514

An aquamarine and diamond ring set with an emerald-cut aquamarine flanked by numerous brilliant-cut diamonds, mounted in 18k white gold. Colour: Top Wesselton (F-G). Clarity: VS-SI1. Size 53. Rome, circa 2000. *DKK 18,000-20,000 / € 2,400-2,700*

515

An Art Deco diamond brooch set with numerous old, single and baguette-cut diamonds, mounted in platinum and silver. L. app. 3.3 cm. Circa 1930.

DKK 10,000 / € 1,350

516

A diamond bracelet set with numerous brilliant-cut diamonds weighing a total of app. 6.00 ct., mounted in 14k white gold. Colour: River-Top Wesselton (E-G). Clarity VS. L. app. 18 cm. Circa 2008.

Accompanied by original case. DKK 40,000 / € 5,400



510



511



512



513



514



515



516



517

A diamond necklace set with numerous brilliant-cut diamonds weighing a total of app. 0.95 ct., mounted in 18k white gold. L. app. 42 cm. Milan, ca. 2010.
DKK 10,000-12,000 / € 1,350-1,600

518
DIOR

A pair of diamond ear screws each set with numerous brilliant-cut diamonds weighing a total of app. 1.80 ct., mounted in 18k white gold. Serial no. B0789. L. app. 6 cm. (2)
DKK 18,000-20,000 / € 2,400-2,700

519

A Burma sapphire and diamond ring set with a natural oval-cut Burma sapphire weighing app. 4.26 ct. encircled and flanked by numerous brilliant-cut diamonds weighing a total of app. 0.52 ct., mounted in 18k white gold. Colour: Top Wesselton (F-G). Clarity: VS. Size 54. Milan, circa 2006.
Accompanied by Gübelin certificate no. 14050258 indicating "Origin Burma (Myanmar)" and "No indications of heating (NTE)". 2014.
DKK 90,000-100,000 / € 12,000-13,500

520

A pair of pearl and diamond ear pendants each set with a natural pearl, pear-shaped brilliant-cut diamond and numerous brilliant-cut diamonds, mounted in platinum. Pearl diam. app. 6.9-11.0 mm. L. app. 2.8 cm. Circa 1910. (2)

Accompanied by case and certificate from The Gem & Pearl Laboratory indicating "Natural Pearls".
DKK 50,000 / € 6,700

521
WILLY JAGERT

A sapphire and diamond ring set with an oval-cut sapphire weighing app. 4.14 ct. encircled by numerous brilliant-cut diamonds weighing a total of app. 1.91 ct., mounted in platinum. Colour: Top Wesselton (G). Clarity: VVS. Size 54. 1989.
Accompanied by insurance valuation and case from Halberstadt.

Willy Jagert was one of the winning jewellers at the De Beers Diamond International Awards in 1969.
DKK 50,000 / € 6,700

522

A diamond bangle set with numerous brilliant-cut diamonds weighing a total of app. 2.00 ct., mounted in 14k white gold. Colour: Top Wesselton (F-G). Clarity: VS. Diam. app. 5.8 cm.
DKK 20,000 / € 2,700

523

A diamond bracelet set with numerous brilliant-cut diamonds weighing a total of app. 5.75 ct., mounted in 18k white gold. Colour: Top Wesselton (F-G). Clarity: VS-SI. L. 18.3 cm. Circa 2010.
DKK 40,000-50,000 / € 5,400-6,700



517



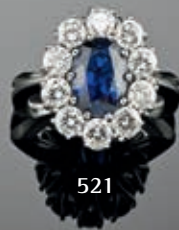
518



519



520



521



522



523



524

A diamond necklace set with numerous brilliant-cut diamonds weighing a total of app. 5.05 ct., mounted in 18k white gold. Colour: Top Wesselton (F-G). Clarity: VS-SI. L. app. 166 cm. Milan, circa 2010.

DKK 35,000-40,000 / € 4,700-5,400

525

A diamond pendant in the shape of a cross set with numerous brilliant-cut diamonds weighing a total of app. 1.10 ct., mounted in 18k white gold. Colour: Top Wesselton-Wesselton (G-H). Clarity: VS. L. app. 3.5 cm. Milan, circa 2000.

DKK 10,000-12,000 / € 1,350-1,600

526

A pair of diamond ear studs each set with a brilliant-cut diamond weighing app. 1.28 ct. and 1.31 ct., totalling app. 2.59 ct., mounted in 18k white gold. Colour: River (E). Clarity: SI1. London, 2012. (2)

Accompanied by case and certificate from AnchorCert no. 20027203 and 20027204. 2016.

DKK 75,000-80,000 / € 10,000-11,000

527

TIFFANY & CO.

A pair of diamond ear studs each set with a brilliant-cut diamond weighing a total of app. 0.50 ct., mounted in 18k white gold. Colour: Wesselton (H). Clarity: Internally Flawless (IF). (2)

Accompanied by original case.

DKK 12,000-15,000 / € 1,600-2,000

528

A Burma ruby and diamond ring set with a natural Burma ruby weighing app. 3.45 ct. flanked by two trilliant-cut diamonds weighing a total of app. 0.80 ct., mounted in 18k gold and white gold. Size 53. Rome, circa 2006.

Accompanied by Gübelin certificate no. GRS2011 indicating, "No indication of thermal treatment" and Origin: "Burma". Switzerland, 2011.

DKK 125,000-150,000 / € 17,000-20,000

529

CARTIER

A diamond eternity ring "Lanières" set with numerous brilliant-cut diamonds weighing a total of app. 1.53 ct., mounted in 18k white gold. Signed Cartier. Serial no. J15394. Size 53. 1999.

DKK 40,000-45,000 / € 5,400-6,050

530

A diamond bracelet set with numerous brilliant-cut diamonds weighing a total of app. 9.41 ct., mounted in 18k white gold. Colour: Wesselton-Top Crystal (H-I). Clarity: VS-SI. L. app. 18.5 cm. Milan, circa 2005.

DKK 70,000-80,000 / € 9,400-11,000



524



525



526



527



528



529



530



531

A ruby brooch/clip set with numerous natural circular and oval-cut Burma rubies weighing a total of app. 7.80 ct., mounted in 18k gold. Diam. app. 4.5 cm. Milan, circa 1960.

Accompanied by Gisgem report no. 3760 indicating "No indications of heating (for the most part)". 2016.

DKK 30,000 / € 4,050

532

MARIO BUCCELLATI

A diamond bangle set with numerous brilliant-cut diamonds, mounted in 18k gold and silver. Signed M. Buccellati. Diam. app. 5.6 cm. Vægt ca. 38 g. Italy, circa 1950-60.

Accompanied by original jewellery bag. DKK 175,000-200,000 / € 23,500-27,000

533

A ruby and diamond ring set with numerous square-cut rubies and old-cut diamonds, mounted in 18k gold and white gold. Size 54. Rome, circa 1950-60.

DKK 12,000-15,000 / € 1,600-2,000



531



532



533



534

OLE LYNNGAARD

A five-strand onyx necklace with numerous onyx beads and a "Flower" diamond clasp for one or two strands set with numerous brilliant-cut diamonds weighing a total of app. 0.10 ct., mounted in 14k satinated gold. Colour: Wesselton (H). Clarity: VS. Diam. clasp app. 2.3 cm. L. necklace app. 40 cm. Design Charlotte Lynggaard.

Accompanied by original case.

DKK 10,000-12,000 / € 1,350-1,600

535

CARTIER

A pair of ear clips "Creoles" of 18k gold. L. app. 3.5 cm. Weight app. 52.5 g. Circa 1970-80. (2)

Accompanied by original case. DKK 30,000 / € 4,050

536

CARTIER

A diamond ring "La Dona" set with numerous brilliant-cut diamonds weighing a total of 2.00 ct., mounted in 18k pink gold. Colour: River-Top Wesselton (E-F). Clarity: VVS-VS. Serial no. NW 2215. Ref. no. B 4068300. Signed Cartier. Size 57. Cartier, Paris.

Accompanied by original case and valuation from Cartier.

"The ring is the High Jewellery version from Cartier's very famous La Dona Collection. The La Dona Collection was created in honor of Mexico's iconic film star, Maria Felix, who had many important Cartier pieces designed for her by Cartier Paris."

DKK 30,000-40,000 / € 4,050-5,400

537

CARTIER

A "Trinity" diamond ring set with numerous brilliant-cut diamonds weighing a total of app. 2.98 ct., mounted in 18k white, yellow and pink gold. Serial no. Q19884. Ref. no. N4210700. Size 50. Signed. *Retail price app. EUR 32,900.*

Accompanied by original case.

The "Trinity de Cartier" ring was created in 1924 by Louis Cartier. Three types of gold, three symbolic colours. Pink for love, yellow for fidelity and white for friendship.

DKK 40,000 / € 5,400

538

A South Sea pearl and diamond ring set with a cultured golden South Sea pearl and numerous brilliant-cut diamonds weighing a total of app. 0.50 ct., mounted in 18k gold. Colour: Top Wesselton (F-G). Clarity: VS-SI. Pearl diam. app. 18.45 mm. Size 52. Milan, circa 2007.

DKK 20,000-25,000 / € 2,700-3,350

539

CARTIER

A bangle of 18k gold. Diam. app. 6 cm. Weight app. 70 g.

Provenance: The actress Farrah Fawcett Majors.

DKK 40,000-50,000 / € 5,400-6,700



534



535



536



537



538



539



540

OLE LYNNGAARD

A three-strand smokey quartz necklace set with numerous beads of smokey quartz and a 14k satinated gold and white gold "Smile" clasp. Diam. clasp app. 1.5 cm. L. necklace app. 45 cm.

Accompanied by original case. DKK 10,000 / € 1,350

541

A long pearl necklace set with numerous cultured pearls, mounted in platinum and gold. Pearl diam. app. 3.85 mm. L. app. 142 cm. Total weight app. 24 g. England, circa 1950-60.

DKK 10,000-12,000 / € 1,350-1,600

542

CARTIER

A diamond ring "Nigeria" set with numerous brilliant-cut diamonds weighing a total of app. 6.00 ct., mounted in 18k gold. Size 55. Signed. Serial no. 609859. Paris, circa 2000.

DKK 80,000 / € 11,000

543

A necklace with a diamond pendant set with numerous brilliant-cut diamonds weighing a total of 2.67 ct., mounted in 18k rose gold. L. necklace app. 40 cm. Diam. pendant app. 1.3 cm. Milan, circa 2010.

DKK 12,000-15,000 / € 1,600-2,000

544

BIBIGI

A diamond ring set with numerous brilliant-cut diamonds, mounted in 18k gold. Colour: Top Wesselton-Wesselton (G-H). Clarity: VS. Size 53. Italy, ca. 2005.

DKK 10,000-12,000 / € 1,350-1,600

545

CARTIER

A pair of diamond rings "Ellipse" each set with brilliant-cut diamond weighing a total of app. 0.50 ct., mounted in 18k gold and white gold. Colour: Top Wesselton (F-G). Clarity: VVS. Signed. Size 51 and 52. (2)

DKK 30,000 / € 4,050

546

A diamond bracelet set with numerous brilliant-cut diamonds weighing a total of app. 3.54 ct., mounted in 18k rose gold. Colour: Top Wesselton (F-G). Clarity: VS-SI. L.app. 18 cm. Milan, circa 2010.

DKK 20,000-25,000 / € 2,700-3,350



540



541



542



543



544



545



546



547

A necklace with a ruby and diamond pendant set with a heart shaped ruby weighing app. 4.11 ct. encircled by numerous brilliant-cut diamonds weighing a total of app. 1.02 ct., mounted in 18k white gold. Colour: Wesselton (H). Clarity: VS. L. pendant app. 2 cm. L. necklace app. 40 cm. Circa 2010.

DKK 20,000 / € 2,700

548

A diamond ring set with numerous brilliant-cut diamonds weighing a total of app. 1.50 ct., mounted in 18k white gold. Colour: Top Wesselton (F). Clarity: VS1. Size 55. Weight app. 14 g. Rome, circa 2010.

DKK 15,000 / € 2,000

549

A diamond ring set with trilliant and brilliant-cut diamonds weighing a total of app. 2.40 ct., mounted in 18k white gold. Colour: Top Wesselton (F-G). Clarity: VS1. Size 53. Rome, circa 2010.

DKK 20,000 / € 2,700

550

A diamond ring set with a brilliant-cut diamond weighing app. 2.19 ct. flanked by baguette-cut diamonds weighing a total of app. 0.16 ct., totalling app. 2.35 ct., mounted in 18k white gold. Colour: Top Cape (L). Clarity: SI. Size 52. Milan, circa 2014. Accompanied by HRD certificate no. 14021808001.

DKK 60,000-70,000 / € 8,050-9,400

551

A ruby and diamond ring set with an oval-cut ruby encircled by numerous brilliant and single-cut diamonds, mounted in 18k white gold. Colour: Top Wesselton-Wesselton (G-H). Clarity: VS-SI. Size 54.5. Circa 2009.

DKK 15,000 / € 2,000

552

A diamond ring set with three brilliant-cut diamonds weighing a total of app. 1.60 ct., mounted in 18k white gold. Colour: Wesselton (H). Clarity: SI-P1. Size 55. Milan, circa 2000.

DKK 20,000-25,000 / € 2,700-3,350

553

A diamond bracelet set with numerous brilliant-cut diamonds, mounted in 18k white gold. L. app. 19 cm. Circa 2012.

DKK 15,000 / € 2,000



547



549



548



550



551



552



553



554

A South Sea pearl necklace with cultured South Sea pearls and a diamond clasp set with brilliant-cut diamonds weighing a total of app. 0.44 ct., mounted in 14k white gold. Pearl diam. app. 12.2-14.2 mm. L. app. 46 cm. Milan, circa 2000.

DKK 30,000 / € 4,050

555

A pair of pearl and diamond ear pendants each set with cultured pearls and brilliant-cut diamonds weighing a total of app. 0.50 ct., mounted in 18k white gold. Pearl diam. app. 5.5 - 8.3 mm. L. app. 7.7 cm. Milan, circa 2000. (2)

DKK 10,000-12,000 / € 1,350-1,600

556

A pair of diamond ear studs each set with a brilliant-cut diamond weighing app. 0.54 ct. and 0.55 ct. encircled by numerous brilliant-cut diamonds weighing a total of app. 1.30 ct., mounted in 18k white gold. Colour: Top Wesselton (G) Clarity: Internally Flawless (IF). Circa 2008. (2)

Accompanied by certificates no. F1204754 and F1067964. Antwerp, 1981. DKK 30,000 / € 4,050

557

A diamond ring set with a cushion-cut light yellow diamond weighing app. 1.51 ct. encircled by numerous brilliant-cut diamonds, totalling app. 2.11 ct., mounted in 18k white gold. Clarity: VS. Size 53. Circa 2010.

DKK 30,000-35,000 / € 4,050-4,700

558

A diamond eternity ring set with numerous brilliant-cut diamonds weighing a total of app. 3.76 ct., mounted in 18k white gold. Colour: Top Wesselton-Wesselton (G-H). Clarity: VS-SI. Size 54. Milan, circa 2010.

DKK 30,000 / € 4,050

559

A diamond ring set with numerous brilliant-cut diamonds weighing a total of app. 1.55 ct., mounted in 18k white gold. Colour: Top Wesselton (F-G) Clarity: VS. Size 56. Circa 2011.

DKK 18,000-20,000 / € 2,400-2,700

560

A diamond bracelet set with numerous brilliant-cut diamond weighing a total of app. 7.20 ct., mounted in 18k white gold. Colour: Top Wesselton (F-G). Clarity: VS-SI. L. app. 18.5 cm. Milan, circa 2010.

DKK 50,000 / € 6,700



554



555



556



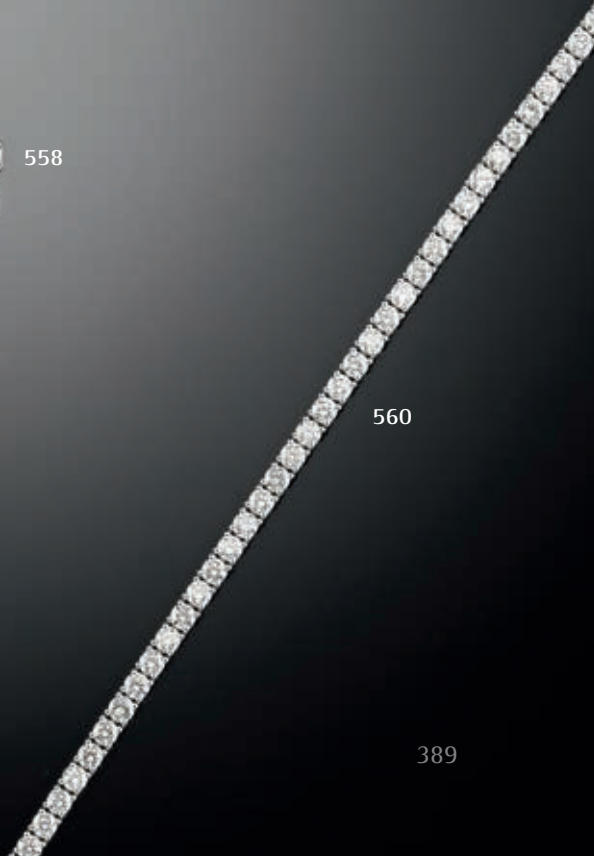
557



558



559



560



561

GEORG JENSEN & WENDEL

A necklace with a diamond pendant set with a brilliant-cut diamond weighing app. 0.74 ct., mounted in 14 and 18k white gold. Colour: Top Wesselton (F). Clarity: Internally Flawless (IF). L. necklace app. 37 cm. 1983.

Accompanied by original case, receipt and insurance valuation from Lloyd's of London.

DKK 12,000-15,000 / € 1,600-2,000

562

BOUCHERON

A diamond brooch/clip set with numerous brilliant and baguette-cut diamonds, mounted in platinum. L. app. 3.6 cm. Circa 1960.

DKK 18,000-20,000 / € 2,400-2,700

563

A sapphire and diamond ring set with an oval-cut sapphire weighing app. 5.40 ct. encircled by numerous brilliant-cut diamonds weighing a total of app. 1.32 ct., mounted in 18k white gold. Colour: Top Wesselton (F-G). Clarity: VS1. Size 60. Rome, circa 2005.

DKK 15,000 / € 2,000

564

A tanzanite and diamond ring set with a cushion-cut tanzanite weighing app. 7.28 ct. flanked by numerous brilliant-cut diamonds weighing a total of app. 0.50 ct., mounted in 14k white gold. Colour: Top Wesselton (G). Clarity: VVS-VS. Size 54. Circa 2006.

DKK 20,000-30,000 / € 2,700-4,050

565

A diamond ring set with an emerald-cut diamond weighing app. 0.71 ct. flanked by numerous brilliant-cut diamonds, totalling app. 1.11 ct., mounted in platinum. Colour: River-Top Wesselton (D-F). Clarity: VVS-VS. Size 51. Circa 2014.

Accompanied by AGI certificate no. 6DR15100701-L779, New York, 2015.

DKK 25,000 / € 3,350

566

A sapphire and diamond bangle set with numerous square-cut sapphires weighing a total of app. 1.25 ct. and princess-cut diamonds weighing a total of app. 0.24 ct., mounted in 18k white gold. Colour: Wesselton (H). Clarity: VS. Diam. app. 6 cm. Rome, circa 2010.

DKK 12,000-15,000 / € 1,600-2,000

567

A diamond bracelet set with numerous brilliant-cut diamonds weighing app. 2.30 ct., mounted in 18k white gold. L. app. 17.5 cm. Circa 2010.

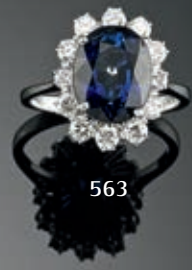
DKK 15,000 / € 2,000



561



562



563



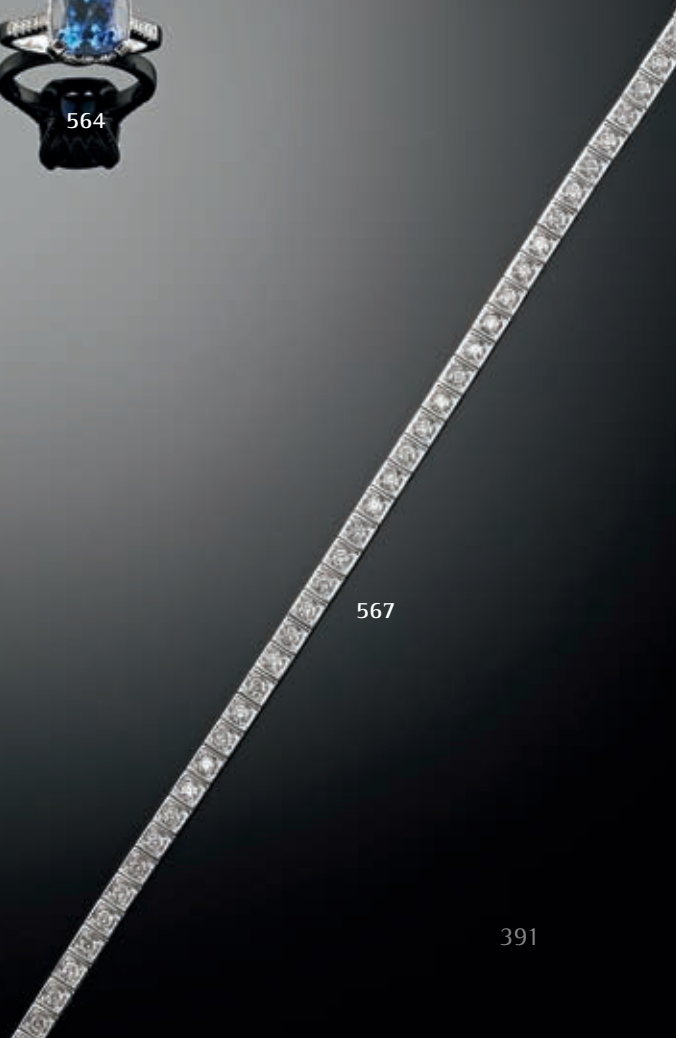
564



565



566



567



568

A diamond necklace set with numerous brilliant-cut diamonds and a pendant set with a brilliant-cut diamond, totalling app. 1.20 ct., mounted in 18k white gold. Colour: Wesselton (H). Clarity: P. L. app. 43 cm. Milan, circa 2010. *DKK 15,000 / € 2,000*

569

CHOPARD

A necklace with a diamond pendant "Happy Diamonds" in the shape of an elephant set with numerous brilliant-cut diamonds and a circular-cut ruby, mounted in 18k white gold. Serial no. 9144195. 79/2252-20. L. pendant app. 2 cm. L. necklace app. 41 cm. *DKK 20,000-25,000 / € 2,700-3,350*

570

CHOPARD

A diamond ring "Happy Diamonds" set with numerous brilliant-cut diamonds weighing app. 0.46 ct., mounted in 18k white gold. Size 51. Milan, circa 2010. *DKK 10,000-12,000 / € 1,350-1,600*

571

BULGARI

A pair of diamond ear pendants "Cicliadi" each set with numerous brilliant-cut diamonds, mounted in 18k white gold. L. app. 3.5 cm. (2) *DKK 15,000-18,000 / € 2,000-2,400*

572

A diamond ring set with a brilliant-cut diamond weighing app. 2.02 ct. encircled by brilliant-cut diamonds, totalling app. 2.24 ct., mounted in 18k white gold. Colour: Crystal (J). Clarity: SI. Size 53. Milan, circa 2006. *DKK 70,000-75,000 / € 9,400-10,000*

573

A diamond ring set with numerous brilliant and baguette-cut diamonds weighing a total of app. 1.27 ct., mounted in 18k white gold. Size 54. Milan, circa 2010. *DKK 10,000-12,000 / € 1,350-1,600*

574

A diamond bracelet set with numerous brilliant-cut diamonds weighing a total of app. 5.01 ct. mounted in 18k white gold. Colour: River-Top Wesselton (E-F). Clarity: VS-SI. L. app. 18.5 cm. Milan, circa 2005. *DKK 40,000 / € 5,400*



568



569



570



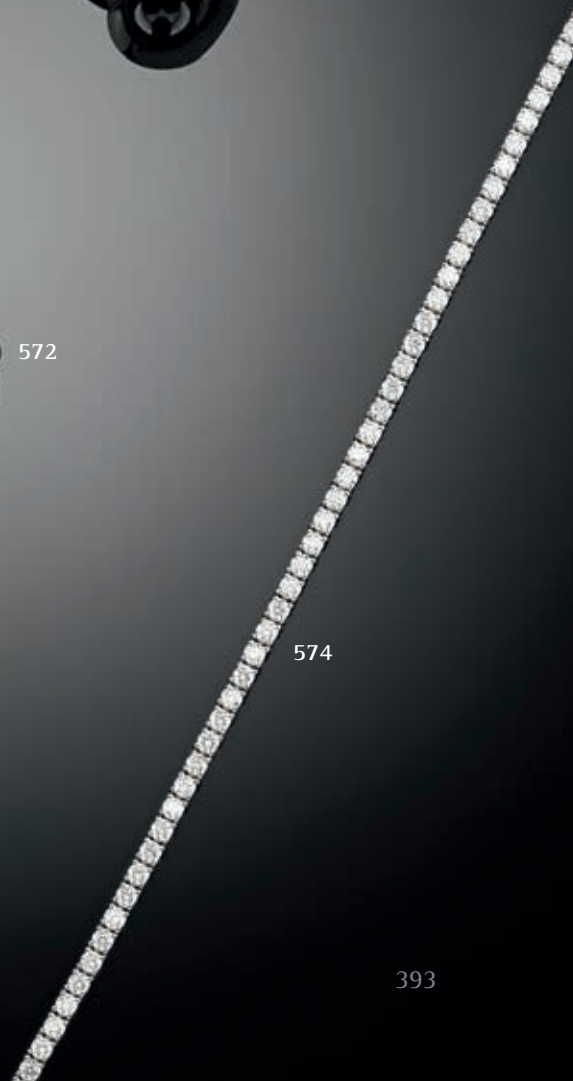
571



572



573



574



575

A Tahiti pearl necklace set with cultured Tahiti pearls with a clasp of 14k white gold. Pearl diam. app. 11.0-13.9 mm. L. app. 44 cm. Circa 2011.

DKK 15,000-18,000 / € 2,000-2,400

576

OLE LYNNGAARD

A tourmaline and diamond clasp "Emeli" set with an oval cabochon tourmaline encircled by brilliant-cut diamonds weighing a total of app. 0.24 ct., mounted in 18k white gold. Colour: Top Wesselton (G). Clarity: VS. L. app. 1.6 cm. Circa 2012.

Accompanied by original jewellery bag.

Retail price app. DKK 41.500.

DKK 12,000-15,000 / € 1,600-2,000

577

An emerald and diamond ring set with an emerald-cut emerald weighing app. 3.75 ct. and numerous brilliant-cut diamonds weighing a total of app. 1.52 ct., mounted in 18k white gold. Colour: Top Wesselton (G). Clarity: VS. Weight app. 15.5 g. Size 54. Rome, circa 2010.

DKK 20,000 / € 2,700

578

A pair of Tahiti pearl and diamond ear pendants each set with a cultured Tahiti pearl, pear-shaped and marquise, princess and brilliant-cut diamonds weighing a total of app. 1.00 ct., mounted in 18k white gold. Pearl diam. app. 12.8 mm. L. app. 3.6 cm. Turin, circa 2000. (2)

DKK 15,000 / € 2,000

579

A pair of diamond ear pendants each set with numerous rose, single and baguette-cut diamonds, mounted in partly gilded silver. L. app. 5.5 cm. Circa. 2007. (2)

DKK 10,000-12,000 / € 1,350-1,600

580

JYTTE KLØVE

A diamond and emerald ring set with a marquise-cut diamond weighing app. 1.70 ct. and numerous square-cut emeralds, mounted in 14k white gold. Colour: Top Cape (K-L). Clarity: SI. Size 49. Circa 1980-90.

DKK 20,000-25,000 / € 2,700-3,350

581

An emerald and diamond bracelet set with numerous circular cut emeralds weighing a total of app. 2.70 ct. and brilliant-cut diamonds weighing a total of app. 1.00 ct., mounted in 18k white gold. L. app. 18 cm. Milan, circa 1980.

DKK 18,000-20,000 / € 2,400-2,700



577



576



575



578



579



580



581



582

A diamond necklace set with numerous old-cut diamonds, mounted in white gold. L. pendant app. 4.2 cm. L. necklace app. 41 cm. Circa 1910.

DKK 12,000-15,000 / € 1,600-2,000

583

A diamond ring set with numerous brilliant-cut diamonds weighing a total of app. 1.62 ct., mounted in 18k white gold. Colour: Top Wesselton (F). Clarity: VSI. Size 67. Rome, circa 1990.

DKK 15,000 / € 2,000

584

A pair of pearl and diamond ear pendants each set with presumably natural pearls, rose and old-cut diamonds and square-cut agates, mounted in 18k white gold. L. app. 5 cm. London, circa 1910. (2)

DKK 10,000-12,000 / € 1,350-1,600

585

A diamond brooch set with two old-cut diamonds weighing a total of app. 1.65 ct. encircled by numerous old-cut diamonds, mounted in platinum and gold. L. app. 7 cm. Circa 1930.

Accompanied by original case.

DKK 10,000-15,000 / € 1,350-2,000

586

A diamond brooch/hair clip set with numerous brilliant-cut diamonds, mounted in platinum and 14k white gold. Colour: Crystal (J). Clarity: VVS-SI. L. app. 7.2 cm. Amsterdam, circa 1920.

DKK 10,000 / € 1,350

587

HUGO GRÜN

A diamond bracelet set with numerous brilliant-cut diamonds weighing a total of app. 3.60 ct., mounted in 18k white gold. L. app. 18.5 cm. Colour: Top Wesselton-Crystal (G-J). Clarity: VS-SI. L. app. 18.5 cm.

DKK 15,000-20,000 / € 2,000-2,700



583



582



584



585



586



587



588

A Tahiti pearl necklace set with numerous cultured Tahiti pearls, mounted in 18k white gold. Pearl diam. app. 13.1-14.2 mm. L. app. 45.5 cm. Rome, circa 2000. DKK 20,000-25,000 / € 2,700-3,350

Accompanied by Gisgem certificate no. 3725 indicating "No indication of heating". 2016.

DKK 30,000 / € 4,050

589

A pair of Tahiti pearl and diamond ear pendants each set with a cultured Tahiti pearl and a brilliant-cut diamond weighing a total of app. 0.30 ct, mounted in 18k white gold. Colour: Top Wesselton (F-G). Clarity: VS-SI1. Pearl diam. app. 12.1 mm. L. app. 1.6 cm. Rome, circa 2010. (2)

DKK 10,000-12,000 / € 1,350-1,600

592

A ruby and diamond ring set with an oval-cut natural ruby weighing app. 1.70 ct. encircled by numerous brilliant-cut diamonds weighing a total of app. 1.40 ct., mounted in 18k white gold. Colour: Wesselton-Top Crystal (H-I). Clarity: VS-SI. Size 51.5. Circa 1990.

Accompanied by certificate no. 22052 from Instituto Gemmologico Nazionale. 2016. DKK 50,000 / € 6,700

590

A pair of Tahiti pearl and diamond ear pendants each set with a cultured Tahiti pearl, a square-cut ruby and numerous single-cut diamonds, mounted in partly gilded silver. Pearl diam. app. 14.5 mm. L. app. 3.5 cm. Circa 2009. (2) DKK 10,000 / € 1,350

593

A diamond bracelet in the shape of belt with a buckle set with numerous brilliant-cut diamonds weighing a total of app. 0.67 ct., mounted in 18k white gold. Weight app. 50 g. Adjustable. Rome, ca. 1950 DKK 20,000-25,000 / € 2,700-3,350

591

A ruby and diamond brooch set with numerous natural circular and oval-cut rubies weighing a total of app. 3.60 ct. and brilliant and baguette-cut diamonds weighing a total of app. 5.00 ct., mounted in 18k white gold. L. app. 6.3 x 3.0 cm. Milan, circa 1960.

594

A diamond bracelet set with numerous brilliant-cut diamonds weighing a total of app. 6.50 ct., mounted in 14k white gold. Colour: Top Wesselton (G). Clarity VS-SI. L. app. 19 cm. Circa 2009.

Accompanied by original case. DKK 30,000 / € 4,050



588



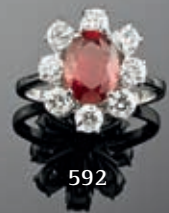
589



590



591



592



593



594



595

OLE LYNNGAARD A. O.

A South Sea pearl and diamond necklace with cultured South Sea pearls and a diamond clasp "Flower" in the shape of a flower set with brilliant-cut diamonds weighing a total of app. 0.10 ct., mounted in 14k satinated gold and white gold. Colour: Wesselton (H). Clarity: VS. Pearl diam. app. 14.0 - 16.5 mm. L. necklace app. 50 cm. L. clasp app. 2.3 cm. Design Charlotte Lynggaard. Circa 2002.

DKK 25,000-30,000 / € 3,350-4,050

596

OLE LYNNGAARD

Two necklaces of 14k gold and sterling silver with four clasps, two set with brilliant-cut diamonds, mounted in 14 and 18k satinated gold and white gold. Colour: Wesselton (H). Clarity: VS. L. app. 70 and 44 cm. (6)

Accompanied by original case.

DKK 10,000-12,000 / € 1,350-1,600

597

A diamond solitaire ring set with a brilliant-cut diamond weighing app. 2.12 ct., mounted in 18k gold. Colour: Cape-Light Yellow (N-O). Clarity VVS2. Size 52. 2014.

Accompanied by certificate no. 14020232022.

DKK 40,000 / € 5,400

598

A Burma ruby and diamond ring set with a natural Burma ruby weighing app. 1.03 ct. and brilliant-cut diamonds, mounted in 17.5k gold. Size 52.5. Circa 2003.

Accompanied by GRS certificate no. GRS2003 indicating, "No indication of heating" and origin "Burma".

DKK 20,000 / € 2,700

599

A diamond bangle set with numerous brilliant-cut diamonds weighing a total of app. 10.00 ct., mounted in 18k gold and white gold. Colour: Top Wesselton (F-G). Clarity: VS1. Diam. app. 6 cm. Weight app. 55 g. Rome, circa 1980.

DKK 70,000 / € 9,400

600

CHOPARD

A diamond pendant in the shape of a clown set with brilliant-cut diamonds and circular-cut rubies, sapphires and emeralds, mounted in 18k gold. L. app. 4 cm.

DKK 12,000 / € 1,600



595



596



597



598



599



600



601

A Belle Epoque diamond necklace set with an old-cut diamond weighing app. 0.50 ct., mounted in platinum and gold. L. necklace app. 41 cm. L. pendant app. 3 cm. Circa 1900-1910.

DKK 12,000-15,000 / € 1,600-2,000

602

A pair of South Sea pearl and diamond ear pendants each set with a cultured South Sea pearl and numerous rose and single-cut diamonds, mounted in partly gilded silver. Pearl diam. app. 15.50 mm. L. app. 3 cm. Circa 2008. (2)

DKK 10,000-12,000 / € 1,350-1,600

603

A pair of South Sea pearl and diamond ear pendants each set with a cultured South Sea pearl and numerous brilliant-cut diamonds, mounted in 18k white gold. Colour: Top Wesselton (F-G). Clarity: VS-SI1. Pearl diam. app. 1.5 mm. L. app. 2.8 cm. Rome, circa 2008. (2)

DKK 12,000-15,000 / € 1,600-2,000

604

A pair of diamond ear studs each set with a brilliant-cut diamond weighing app. 0.50 ct., totalling app. 1.00 ct., mounted in 18k white gold. Colour: Top Wesselton-Wesselton (G-H). Clarity: VVS. Milan, circa 2010. (2)

Accompanied by Gisgem certificate no. 3425. 2016.

DKK 18,000-20,000 / € 2,400-2,700

605

A diamond pendant in the shape of a cross set with numerous brilliant-cut diamonds weighing a total of app. 2.50 ct., mounted in 18k white gold. Colour: Wesselton-Top Crystal (H-I). Clarity: VS-SI. L. app. 4.5 cm. Rome, circa 1950. *DKK 15,000 / € 2,000*

606

A diamond eternity ring set with numerous brilliant-cut diamonds weighing a total of app. 3.10 ct., mounted in 18k white gold. Colour: Top Wesselton (F-G). Clarity: VS-SI. Size 56. Milan, circa 2010.

DKK 20,000-25,000 / € 2,700-3,350

607

A diamond ring set with numerous brilliant-cut diamonds, mounted in 18k white gold. Colour: Top Wesselton-Wesselton (G-H). Clarity: VS-SI. Size 54. Rome, circa 2000.

DKK 10,000-12,000 / € 1,350-1,600

608

A diamond bracelet set with numerous brilliant-cut diamonds weighing a total of app. 4.00 ct., mounted in 14k white gold. Colour: Top Wesselton-Wesselton (G-H). Clarity VS-P1. L. app. 18 cm. Circa, 2010. *DKK 18,000-20,000 / € 2,400-2,700*



601



602



603



604



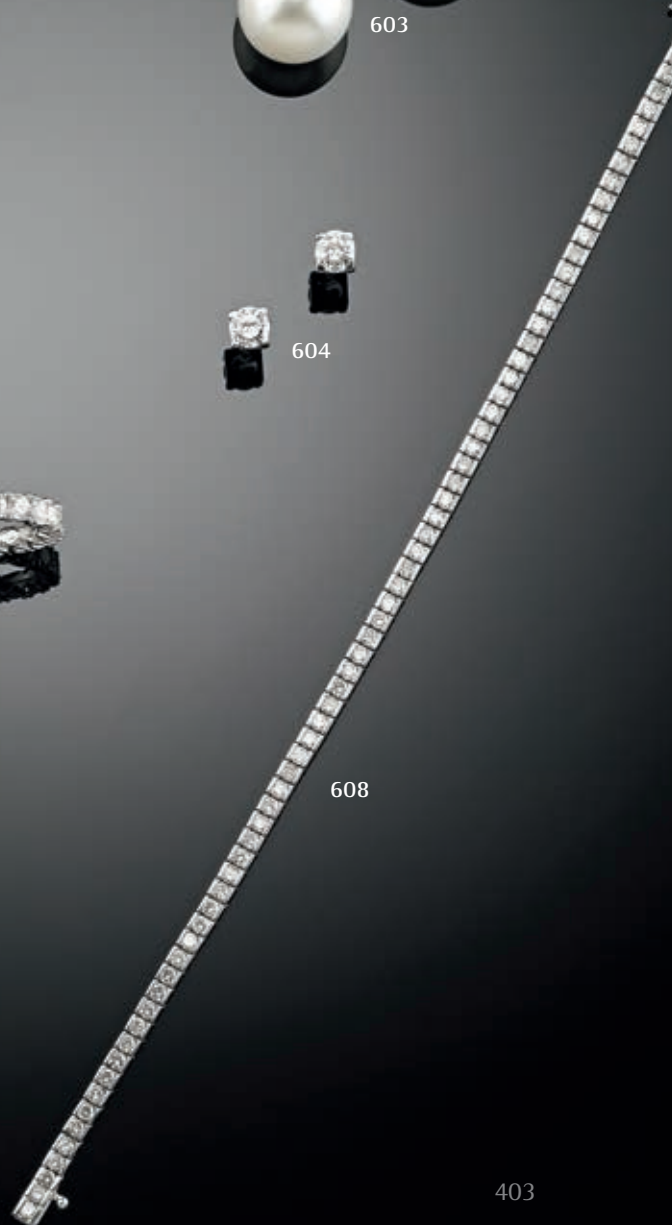
605



606



607



608



609

A necklace with a diamond pendant in the shape of a heart set with numerous brilliant-cut diamonds weighing a total of app. 1.26 ct., mounted in 18k white gold. Colour: Top Wesselton (F-G). Clarity: VVS. L. pendant app. 2.5 cm. L. necklace app. 40 cm. Accompanied by insurance valuation of DKK 39.800 from Lynggaard.

DKK 12,000-15,000 / € 1,600-2,000

610

A pair of diamond ear pendants "Creoles" each set with numerous brilliant-cut diamonds weighing a total of app. 1.53 ct., mounted in 18k white gold. Colour: Top Wesselton (F-G). Clarity: VS-SI. Diam. app. 4.6 cm. Rome, circa 2000. (2)

DKK 20,000-25,000 / € 2,700-3,350

611

A diamond ring set with a brilliant-cut blue diamond weighing app. 1.00 ct. flanked by numerous brilliant-cut white diamonds, totalling app. 2.00 ct., mounted in 18k white gold. Grading of white diamonds: Colour: River-Top Wesselton (E-F). Clarity: VVS. Size 54.5. Circa 2008. *DKK 20,000 / € 2,700*

612

A diamond ring set with a brilliant-cut heart-shaped diamond weighing app. 2.01 ct. flanked by two baguette-cut diamonds, mounted in 18k white gold. Colour: River (E). Clarity: P. Size 54.

DKK 40,000 / € 5,400

613

A sapphire and diamond ring set with an oval-cut sapphire weighing app. 4.60 ct. encircled by numerous brilliant-cut diamonds, mounted in 18k white gold. Colour: Top Crystal-Crystal (I-J). Clarity: VS. Size 56.5. Milan, circa 1990. *DKK 15,000 / € 2,000*

614

KLARLUND

A diamond solitaire ring set with a brilliant-cut diamond weighing app. 1.04 ct., mounted in 18k white gold. Colour: River (D). Clarity: VS. Size 51.5. 1978. Accompanied by original case, receipt, certificate and insurance valuation.

DKK 25,000-30,000 / € 3,350-4,050

615

A diamond bracelet set with numerous brilliant-cut diamonds weighing a total of app. 3.60 ct., mounted in 18k white gold. Colour: Top Crystal-Crystal (I-J). Clarity: VS-P1. L. app. 17 cm. Circa 2008.

DKK 15,000-20,000 / € 2,000-2,700



609



610



611



612



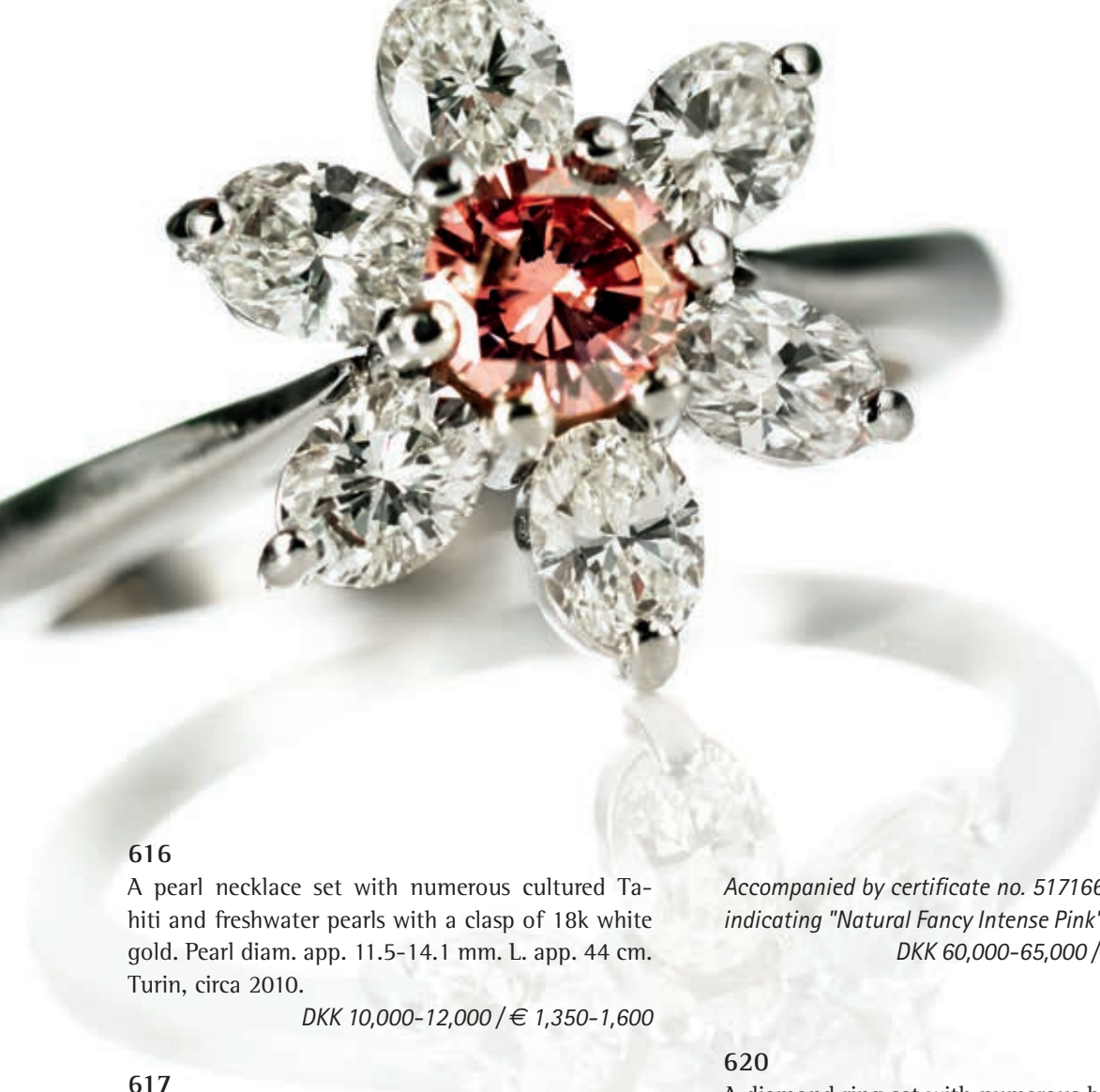
613



614



615



616

A pearl necklace set with numerous cultured Tahiti and freshwater pearls with a clasp of 18k white gold. Pearl diam. app. 11.5-14.1 mm. L. app. 44 cm. Turin, circa 2010.

DKK 10,000-12,000 / € 1,350-1,600

Accompanied by certificate no. 5171665427 from GIA indicating "Natural Fancy Intense Pink". 2016.

DKK 60,000-65,000 / € 8,050-8,750

617

A diamond brooch in the shape of a bow set with numerous brilliant-cut diamonds weighing a total of app. 2.07 ct., mounted in 18k white gold. Colour: Wesselton-Crystal (H-J). Clarity: VS. L. app. 4.5 cm. Circa 1980.

Accompanied by case. DKK 12,000 / € 1,600

620

A diamond ring set with numerous brilliant and baguette-cut diamonds weighing a total of app. 3.50 ct., mounted in platinum. Colour: Wesselton-Top Crystal (H-I). Clarity: VS. Size 51. Circa 1950-60.

DKK 20,000-25,000 / € 2,700-3,350

618

An amethyst and diamond brooch set with an oval-cut amethyst weighing app. 29.00 ct. encircled by numerous single and old mine-cut diamonds, mounted in platinum. L. app. 2.8 x 2.2 cm. Circa 1950.

DKK 12,000-15,000 / € 1,600-2,000

621

A diamond brooch set with numerous brilliant-cut diamonds weighing a total of app. 4.70 ct., mounted in 18k gold. Colour: Wesselton. Clarity: SI-P. Diam. app. 2.7 cm. Milan, circa 1950.

DKK 18,000-20,000 / € 2,400-2,700

619

A diamond ring set with a natural fancy intense purplish pink brilliant-cut diamond weighing app. 0.31 ct., encircled by numerous oval brilliant-cut diamonds, mounted in platinum. Size 52. London, circa. 2014.

622

A diamond bracelet set with numerous princess-cut diamonds weighing a total of app. 5.50 ct., mounted in 14k white gold. Colour: Wesselton (H). Clarity VS-SI. L. app. 19 cm. Circa 2009.

DKK 20,000-25,000 / € 2,700-3,350



616



617



618



619



620



621



622



623

GEORG JENSEN

A jewellery set comprising a necklace, a bracelet and a pair of ear clips of sterling silver. Design no. 30, 33 and 50 A. L. app. 45, 19.5 and 2.2 cm. Georg Jensen and Georg Jensen & Wendel, 1941. (4)

Similar bracelet depicted in David A. Taylor: "Georg Jensen Jewellery". 2005, p. 80.

DKK 30,000 / € 4,050

624

KRISTIAN MØHL-HANSEN

A chrysopras and amber brooch set with cabochon chrysopras and amber, mounted in silver. Design no. 70. Diam. app. 6 cm. Georg Jensen, 1915-1930.

DKK 10,000 / € 1,350



623



624





625

CHR. RASMUSSEN

A pearl necklace with numerous cultured pearls and a diamond clasp set with an old-cut diamond weighing app. 1.60 ct., encircled by numerous single-cut diamonds, mounted in 14k white gold. Pearl diam. app. 7.00-7.40 mm. Colour: Top Cape (K). Clarity: VS. L. app. 99 cm. *DKK 15,000 / € 2,000*

626

An emerald, aquamarine and diamond pendant set with a pear-shaped emerald weighing app. 11.00 ct., an emerald-cut aquamarine weighing app. 4.50 ct. and numerous brilliant and old-cut diamonds weighing a total of app. 1.40 ct., mounted in 18k white gold. L. app. 7.5 cm. Italy, circa 1950.

DKK 20,000 / € 2,700

627

An emerald and diamond ring set with an emerald-cut colombian emerald weighing app. 5.08 ct. flanked by trapeze-cut diamonds weighing a total of app. 0.70 ct., mounted in platinum. Size 56. Milan, circa 2000.

Accompanied by Gisgem report no. 3463 indicating "Moderate clarity enhancement". 2016.

DKK 50,000 / € 6,700

628

A pair of emerald and diamond ear screws each set with an emerald-cut emerald encircled by numerous baguette and old-cut diamonds, mounted in platinum. L. app. 2.5 cm. Circa 1930. (2)

DKK 30,000 / € 4,050

629

An Art Deco diamond ring set with a old-cut diamond weighing app. 0.85 ct. and numerous old and single-cut diamonds, mounted in 14k white gold. Size 58. Circa 1930.

DKK 12,000-15,000 / € 1,600-2,000

630

An emerald and diamond ring set with and emerald-cut emerald weighing app. 8.70 ct. encircled by numerous brilliant-cut diamonds, mounted in 18k white gold. Size 56.

DKK 40,000 / € 5,400

631

An emerald and diamond bracelet set with numerous oval-cut emeralds and old-cut diamonds, mounted in 14k white gold. L. app 18 cm. Circa 1930.

Accompanied by case.

DKK 40,000-50,000 / € 5,400-6,700



625



626



627



628



629



630



631



632

OLE LYNNGAARD

A necklace with beads of tiger's eye and a tiger's eye and diamond clasp in the shape of a Maya head of carved tiger's eye set with a brilliant-cut diamond weighing app. 0.15 ct., mounted in 14k gold. Colour: Wesselton (H). Clarity: VS. L. clasp app. 4.5 cm. L. necklace app. 50 cm. Diam. beads app. 12 mm.

Accompanied by original receipt, case and drawing.

The necklace is a unique piece designed by Ole Lynggaard. The tiger's eyes is purchase in Tasco, Mexico.

DKK 12,000 / € 1,600

633

A pearl and diamond jewellery set comprising a pair of ear pendants and a necklace each set with cultured freshwater pearls and numerous brilliant-cut diamonds, mounted in 18k gold. L. ear pendants app. 4.5 cm. L. necklace app. 37 and 5.6 cm. Circa 1970. (3)

DKK 10,000-12,000 / € 1,350-1,600

634

GARRARD

A pair of pearl and diamond ear pendants each set with a cultured pearl and numerous brilliant-cut diamonds, mounted in 18k gold. Colour: Top Wesselton (F-G). Clarity: VVS-VS. Pearl diam. app. 8.20 mm. L. app. 2.5 cm. London, circa 1980. (2)

DKK 12,000 / € 1,600

635

CHOPARD

A diamond ring "Happy Diamonds" set with numerous brilliant-cut diamonds, mounted in 18k gold. Size 51.

Purchased at Stenstrup Juveler, Copenhagen.

DKK 10,000-12,000 / € 1,350-1,600

636

An emerald and diamond ring set with an oval-cut emerald and numerous brilliant-cut diamonds, mounted in 18k gold and white gold. Colour: Top Wesselton-Wesselton (G-H). Clarity: VS-SI1. Size 53.5. Rome, circa 2000.

DKK 18,000-20,000 / € 2,400-2,700

637

CARTIER

A conch brooch in the shape of a turtle with a conch body, mounted in 18k gold. Signed. Circa 2.0 x 3.5 cm. France, circa 1960.

Accompanied by case.

DKK 25,000 / € 3,350



632



634



633



635



636



532



638

640

639

638
HERMÈS

A "Kelly" 32 bag of black crocodile skin (*crocodylus porosus*, CITES Anexe IIB) with golden hardware, key, keystring, padlock and three interior pockets. *Items made of crocodile or alligator skin require a CITES export permit in order to be exported from Denmark to a country outside The European Union. Buyers residing outside the European Union are required to obtain this permit. More information is available upon request.*

DKK 80,000 / € 11,000

639
HERMÈS

"Jige" clutch of yellow leather. L. app. 29 x 20 x 3 cm. 1992. *DKK 10,000-12,000 / € 1,350-1,600*

640
HERMÈS

A "Kelly" 32 bag of blue leather with golden hardware, three interior pockets, padlock, key, key string and shoulder strap. London, 1993. *Accompanied by original dustbag.*

DKK 12,000-15,000 / € 1,600-2,000

641
CHANEL

A "Jumbo" flap bag of black quilted lam skin with double chain strap, gilded hardware, one interior and two exterior pockets. L. app. 34 x 23 x 10 cm.

DKK 15,000-20,000 / € 2,000-2,700

642
CHANEL

A Flap bag of black quilted lam skin with chain strap, golden hardware and two interior pockets. L. app. 17 x 13 x 6 cm. *DKK 10,000 / € 1,350*

643
CHANEL

A "Mademoiselle Ligne" bag of black ribbed leather with grey contrast stitching, silver-tone hardware, metallic lining, two exterior and several interior pockets. L. app. 28 x 20 x 8 cm. Serial no. 10213880.

DKK 10,000 / € 1,350



641

642

643

644
CHANEL

A beauty box of black quilted lam skin with golden hardware. One interior room with four pockets and burgundy leather lining. L. app. 30 x 17.5 x 16 cm.

DKK 8,000-10,000 / € 1,100-1,350

645
CHANEL

A backpack of black quilted lam skin with golden hardware, chain strap, one large interior room and one exterior pocket. L. app. 22 x 21 x 9.5 cm.

DKK 15,000 / € 2,000



644



645

646

LOUIS VUITTON

A suitcase in monogram canvas with one large interior room, gilded hardware, leather handle and nametag. L. app. 60 x 41 x 19 cm.

DKK 8,000 / € 1,100

647

LOUIS VUITTON

An "Alzer" suitcase in Monogram Canvas with leather handle, linings, nametag and brass hardware. Ref. no. 991175. L. app. 80 x 52 x 18 cm.

DKK 10,000-12,000 / € 1,350-1,600

648

LOUIS VUITTON

A Monogram Canvas trunk with wooden mouldings and gilded hardware, one large tray inside. Serial no. 794838. Etiquette from Louis Vuitton, 149 New Bond Street, London. L. app. 32 x 100 x 52 cm.

DKK 40,000-50,000 / € 5,400-6,700

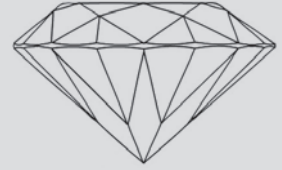
646

647



648

DIAMOND CLARITY AND COLOUR GRADING



DIAMOND CLARITY

Clarity grading follows a hierarchy describing the extent of impurities in a diamond.

All clarity grading is carried out under 10x magnification.

FL and IF

(Flawless and Internally Flawless)

No inclusions and only insignificant blemishes.

VVS1 and VVS2

(Minute Inclusions)

Extremely difficult to see, visible only from the back of the stone, or small and shallow enough to be removed easily by repolishing.

VS1 and VS2

(Minor Inclusions)

Still difficult to see with the untrained eye.

S11 and S12

(Noticeable Inclusions)

Easy (S11) or very easy (S12) for a trained grader to see with a 10x lens. The inclusions in an S11 diamond are not usually visible without magnification, but sometimes you will see eye-visible inclusions in an S12 stone.

P1, P2, P3

(Obvious Inclusions)

May be visible face-up without the use of magnification. In P3, they might affect the stone's durability.

COLOUR GRADING

Colour grading follows a scale describing the "whiteness" or absence of secondary colour in a white diamond. The D-to-Z scale begins with D (colourless) and continues through the alphabet to Z (light yellow). At the top of the scale the diamond will appear white, and at the bottom yellowish or brownish.

Colours outside the normal D-Z colour range are described as fancy colours.

GIA	Scan D.N.
D	River
E	
F	Top Wesselton
G	
H	Wesselton
I	Top Crystal
J	Crystal
K	Top Cape
L	
M	Cape
N	
O	Light Yellow
P	
Q	
R	
S-Z	Yellow

WRISTWATCHES

Thursday 22 September

Lot 649 - 690



Lot 649



649

649
CARTIER

A lady's diamond wristwatch of 18k gold. Model Baignoire. Mechanical movement with manual winding, caliber 430 MC (based on the ultrathin Piaget movement caliber 430P). Silvered guilloché dial with blued hands and black hourmarkers. Cartier bracelet of 18k gold with concealed folding clasp of gold. Circumference app. 17 cm. Four extra links included. Watch diameter app. 32 mm. 2014.

Purchased on Dec. 26th 2014.

Cartier box and certificates included.

DKK 250,000-300,000 / € 33,500-40,500



649



650

650
BREITLING

A lady's diamond wristwatch of 18k gold. Model Chrono Cockpit, ref. K13358. Chronometer certified chronograph movement with date. Mother of pearl dial with hands of gold and diamond hourmarkers. Turning bezel set with numerous diamonds. Total carat ca. 0.66 CT. Breitling bracelet of 18k gold with folding clasp of gold. Circumference app. 18 cm. Four extra links included. Watch diameter app. 38 mm. 2008.

Purchased at Hvelplund on Dec. 9th 2008.

Breitling box and certificates included.

DKK 100,000-120,000 / € 13,500-16,000

651

CARTIER

A lady's diamond wristwatch of 18k white-gold. Model Santos Dumont. Mechanical movement with manual winding. Ivory-colored dial with black hands and hourmarkers. Bezel with numerous after-market brilliant-cut diamonds with a total carat of approx. 4.00 ct. Colour: Top Wesselton (F-G). Clarity: VVS-VS. Blue Cartier strap with folding buckle of 18k white gold. Watch diameter app. 35 mm. 2007.

Purchased in 2007.

Cartier box and certificates included.

DKK 50,000-60,000 / € 6,700-8,050



651



652

652

CHANEL

A lady's wristwatch of 18k gold. Model Matelasse, ref. C.S.15576. Quartz. Black dial with gold hands. Integrated bracelet of 18k gold. Circumference app. 17 cm. Watch diameter 19 mm. 2000s.

Chanel box included.

DKK 20,000 / € 2,700

653

CARTIER

A lady's diamond wristwatch of 18k white gold. Model Pasha. Quartz. Silvered dial with blued hands and black hourmarkers. Bezel set with numerous diamonds. Black Cartier strap with folding buckle of 18k white gold. Watch diameter 32 mm. 2005.

Purchased on Oct. 16th 2005.

Cartier box, certificates and receipt for new strap dated 2013 included.

DKK 50,000 / € 6,700



653



654

654

PATEK PHILIPPE

A lady's diamond wristwatch of 18k rose gold. Model Twenty4, ref. 4910/1R-010. Quartz. Gold-colored dial with gold hands and diamond hourmarkers. Bezel set with numerous diamonds. Patek Philippe bracelet of 18k rose gold with concealed clasp. Circumference app. 18 cm. One extra link included. Watch diameter app. 25 mm. 2000.

Patek Philippe box and certificates included.

DKK 80,000-100,000 / € 11,000-13,500

655

ROLEX

A lady's diamond wristwatch of 18k gold. Model DateJust, ref. 69238. Chronometer certified automatic movement with date. Champagne-colored dial with hands of gold and diamond hourmarkers. Rolex "President" bracelet of 18k gold with concealed clasp. Circumference approx. 17 cm. Watch diameter 25 mm. Approx. 1996.

DKK 30,000-40,000 / € 4,050-5,400



655



656

656

BULGARI

A lady's diamond wristwatch of 18k rose gold. Model Assioma. Quartz. Black dial with hands and hourmarkers of rose gold. Bezel set with numerous diamonds. Integrated bracelet of 18k rose gold with concealed folding clasp. Circumference app. 18 cm. Watch diameter app. 18 cm. 2009.

Purchased at Bulgari London on Sep. 19th 2009.

Bulgari box, certificates and receipt for battery change dated Oct. 26th 2015 included. DKK 50,000 / € 6,700

657

PATEK PHILIPPE

A lady's wristwatch of 18k white gold, ref. 3322. Mechanical movement with manual winding. Blue dial with hands and hourmarkers of white gold. Integrated bracelet of 18k white gold. Circumference approx. 18 cm. Watch diameter approx. 21 mm. Approx. 1970. *DKK 15,000 / € 2,000*



657



658

658

CHOPARD

A lady's diamond wristwatch of steel. Model Happy Sport. Quartz with chronograph. Mother of pearl dial with blued central hands. Seven "floating" diamonds and three rubies as well rubies set on winding crown, chronograph pushers and strap shoulders. Pink Chopard strap with C-buckle of steel. Watch diameter app. 31 mm. 2000s.

Chopard box included.

DKK 20,000-25,000 / € 2,700-3,350

659

CHOPARD

A lady's diamond wristwatch of 18k white gold. Mechanical movement with manual winding, caliber 4722. Silvered dial with hands and hourmarkers of white gold. Bezel set with numerous diamonds. L.U.C winding crown. Integrated bracelet of 18k white gold. Circumference approx. 15 cm. Watch diameter approx. 22 mm. 1960-70s.

*Blue box and two cut-off bracelet links of approx. 2 cm included. *DKK 8,000-10,000 / € 1,100-1,350**



659



660

660

HARRY WINSTON

A lady's diamond wristwatch of zalium. Model Zalium Chronograph. Automatic chronograph movement with date. Grey dial with hands of white gold and diamond hourmarkers. Bracelet of zalium with folding buckle of steel. Circumference app. 20 cm. Watch diameter app. 38 mm. 2013.

The Zalium material is similar to zirconium and titanium in heft and quality. It is developed and exclusively used by Harry Winston.

Purchased on feb. 22nd 2013.

Harry Winston box and sales receipt included.

DKK 50,000-60,000 / € 6,700-8,050

661

ROLEX

A lady's wristwatch of gold and steel. Model Date-Just, ref. 79173. Chronometer certified automatic movement with date. Gold-colored dial with gold hands and diamond hourmarkers. Rolex Jubilee bracelet of gold and steel with folding clasp. Circumference app. 16 cm. Watch diameter 25 mm. Ca. 2002.

Rolex box and "Rolex DateJust" booklet included.

DKK 18,000-20,000 / € 2,400-2,700



661

662

CHANEL

A lady's wristwatch of polished white ceramic. Model J12. Automatic with date. White dial with silvered hands and diamond hourmarkers. Chanel bracelet of white ceramic with concealed folding clasp of steel. Circumference app. 20 cm. Three extra links included. Watch diameter 40 mm. 2009.

Purchased on Dec. 7th 2009.

Chanel box and certificates included.

DKK 18,000-20,000 / € 2,400-2,700



662

663

ROLEX

A gentleman's wristwatch of gold and steel. Model Submariner, ref. 116613. Chronometer certified automatic movement with date. Blue dial with hands and hourmarkers of gold. Rolex Oyster bracelet of gold and steel with "GlideLock" folding clasp. Circumference app. 20 cm. Watch diameter 40 mm. Ca. 2012.

Provenance: State Prosecutor for Serious Economic and International Crime Denmark

DKK 30,000-35,000 / € 4,050-4,700



663

664

ROLEX

A gentleman's wristwatch of steel. Model DateJust II, ref. 116300. Chronometer certified automatic movement with date, caliber 3136. Blue dial with hands and hourmarkers of white gold. Rolex Oyster bracelet of steel with folding buckle. Circumference approx. 20 cm. Watch diameter 41 mm. 2016.

Purchased at Bucherer on Feb. 20th 2016.

Rolex box and certificates included.

Watch appears unused.

DKK 30,000-35,000 / € 4,050-4,700



664



665

665

ROLEX

A gentleman's wristwatch of gold and steel. Model OysterQuartz Datejust, ref. 17013. Chronometer certified quartz movement with date. Champagne-colored dial with hands and hourmarkers of gold. Integrated bracelet of gold and steel with folding clasp. Circumference app. 21 cm. Watch diameter 36 mm. 1986.

Purchased at Bucherer on August 23rd 1986.

Rolex box, certificate and "Rolex OysterQuartz" booklet included.

DKK 15,000-20,000 / € 2,000-2,700

666

ROLEX

A gentleman's wristwatch of steel. Model DateJust, ref. 16234. Chronometer certified automatic movement with date. Silvered dial with hands and hourmarkers of white gold. Bezel of white gold. Rolex Jubilee bracelet of steel with folding clasp. Circumference app. 20 cm. Ca. 1993.

DKK 20,000 / € 2,700



666

667

ROLEX

A gentleman's wristwatch of gold and steel. Model DateJust Turn-O-Graph, ref. 16253. Chronometer certified automatic movement with date. Silver-colored dial with hands and hourmarkers of gold. Turning bezel of gold. Rolex Jubilee bracelet of gold and steel with folding clasp of steel, ref. 62523. Two extra links included. Circumference app. 20 cm. Watch diameter 36 mm. Ca. 1980.

Service receipt from Rolex USA dated Sep. 2014 included.

DKK 15,000-20,000 / € 2,000-2,700



667

668

PATEK PHILIPPE

A gentleman's wristwatch of 18k gold. Model World Timer, ref. 5110R. Automatic movement with world-timer, caliber 240 HU. Guilloché dial with hands and hourmarkers of gold. Black Patek Philippe strap with folding buckle of 18k gold. Watch diameter 37 mm. 2005.

Patek Philippe box and certificates included.

DKK 125,000-150,000 / € 17,000-20,000



668



669

669

PATEK PHILIPPE

A gentleman's wristwatch of 18k gold. Model Annual Calendar, ref. 5036. Automatic movement with annual calendar, power reserve and moon-phase, caliber 315 S. Ivory-colored dial with hands and hourmarkers of gold. Patek Philippe bracelet of 18k gold with concealed folding clasp. Circumference app. 20 cm. Watch diameter 36 mm. 2001.

Patek Philippe box and Extract from the Archives included. DKK 200,000 / € 27,000



670

670

PATEK PHILIPPE

A gentleman's wristwatch of 18k gold. Model Golden Ellipse, ref. 3738. Automatic movement, caliber 240. Blue dial with hands and hourmarkers of gold. Integrated bracelet of 18k gold. Circumference app. 21 cm. Watch diameter app. 31 mm. 1994.

Purchased on february 10th 1994.

Patek Philippe certificate and receipt for new dial, glass and service from Hvelplund dated Dec. 28th 2012 included. DKK 45,000-50,000 / € 6,050-6,700

671

HEUER

A gentleman's wristwatch of steel. Model Autavia, 2446H. Mechanical chronograph movement with manual winding, Valjoux caliber 72. Black dial with relumed hands and tritium hourmarkers. Relumed "12" marker on turning bezel. Exchanged winding crown. Watch diameter app. 39 mm. Ca. 1963-64. *Serial number is 53007 making this watch one of the very last of the first generation ref. 2446H.*

DKK 100,000-150,000 / € 13,500-20,000



671



672

672

ROLEX

A gentleman's wristwatch of 18k gold. Model Cellini, ref. 5330. Mechanical movement with manual winding. White dial with hands and hour markers of gold. Black strap with Rolex C-buckle of 18k gold. Watch diameter app. 35 mm. 2000s.

Rolex box included.

DKK 20,000 / € 2,700



673

673

CHOPARD

A gentleman's wristwatch of 18k gold. Model L.U.C Sport. Chronometer certified automatic movement with date. Black dial with hands and hour markers of gold. Black Chopard strap with C-buckle of 18k gold. Watch diameter app. 40 mm. Ca. 2008-09.

This model is limited to 2000 pieces and has no. 0131/2000.

Chopard box and extra strap included.

DKK 35,000 / € 4,700

674

OMEGA

A gentleman's wristwatch of 18k gold. Ref. 101.010. Mechanical chronograph movement with manual winding, caliber 321. Champagne-colored dial with gold-colored hands and hour markers. Omega winding crown. Brown strap with C-buckle of gold-plated steel. Watch diameter approx. 36 mm. 1967. Purchased at J. W. Johnson Ltd. Dec. 13th 1967. Original sales receipt and certificate included. Watch was serviced in 1986 according to seller.

DKK 25,000 / € 3,350



674



675

675 *

BLANCPAIN

A gentleman's wristwatch of 18k gold. Model Villeret Calendar, ref. 6595. Automatic movement with triple calendar and moonphase. White dial with hands and hour markers of gold. Blancpain ostrich strap with C-buckle of 18k gold. Watch diameter 34 mm. 1991. Blancpain box included.

Watch appears "as new" and has newly fitted movement and undergone a complete overhaul at Blancpain, Switzerland in 2013. A copy of a corresponding letter included.

DKK 25,000-30,000 / € 3,350-4,050

676

UNIVERSAL

A gentleman's wristwatch of 18k gold. Mechanical chronograph movement with manual winding, caliber UG84. White dial with hands and hour markers of gold. Black strap with folding clasp of gold and steel. Watch diameter app. 35 mm. 1990s. Universal box, undated certificate and one brown Universal strap included.

DKK 15,000 / € 2,000



676



677

677
TUDOR

A gentleman's wristwatch of steel. Model Prince "Tiger", ref. 79260. Automatic chronograph movement with date, Valjoux/ETA kaliber 7750. Bordeaux dial with silvered hands and hourmarkers. Black Tudor strap with folding clasp. Watch diameter 40 mm. 1990s.

DKK 15,000-18,000 / € 2,000-2,400

678
OMEGA

A gentleman's wristwatch of steel. Model Speedmaster pre-Moon, ref. 145.022-69. Mechanical chronograph movement with manual winding, caliber 861. Black dial with white hands and tritium hourmarkers. New black strap with C-buckle of steel. Watch diameter 42 mm. 1974.

Purchased on March 9th 1974.

Omega box and receipts included.

Service receipt dated August 12 2016 and exchanged parts (winding crown and chronograph pushers) included.

DKK 15,000-20,000 / € 2,000-2,700



678

679
OMEGA

A gentleman's wristwatch of steel. Model Seamaster, ref. 145.029. Mechanical chronograph movement with manual winding, caliber 861. Blue dial with orange/white hands and tritium hourmarkers. Omega winding crown. Black strap with C-buckle of steel. Watch diameter approx. 38 mm. Approx. 1969.

Watch appears almost unused.

DKK 12,000-15,000 / € 1,600-2,000



679

680

PATEK PHILIPPE

A gentleman's wristwatch of 18k gold. Model Golden Ellipse, ref. 3738. Automatic movement, caliber 240. Patinaed blue dial with hands and hourmarkers of gold. Integrated bracelet of 18k gold. Circumference approx. 21 cm. Watch diameter 31 mm. 1985.

Purchased on Dec. 19th 1985.

Certificate and original sales receipt included.

DKK 25,000 / € 3,350



680

681

ROLEX

A gentleman's wristwatch of 18k gold. Model Day-Date, ref. 16078. Chronometer certified automatic movement with day and date. Newer black dial with gold hands and diamond hourmarkers. Rolex "bark" President bracelet of 18k gold with folding clasp of 18k gold. Circumference app. 22 cm. Watch diameter 36 mm. Ca. 1987-88.

DKK 60,000-80,000 / € 8,050-11,000



681



682

682

ROLEX

A gentleman's wristwatch of steel. Model Submariner, ref. 5513 "Gilt". Automatic movement, caliber 1520. Black "glossy/gilt" dial with tritium hands and re-lumed hourmarkers. Rolex FlipLock bracelet of steel with folding clasp, ref. 93150 from ca. 1980. Circumference approx. 18 cm. Watch diameter 40 mm. 1966.

This watch was purchased at Klarlund, according to seller.

Service receipt dates June 11th 2015 included.

DKK 65,000-70,000 / € 8,750-9,400



683

683

OMEGA

A gentleman's wristwatch of steel. Model Seamaster 600 "PloProf", ref. 166.077. Automatic movement with date, caliber 1002. Blue dial with exchanged white/orange hands and tritium hourmarkers. Black Omega rubber strap with C-buckle of steel. Watch diameter app. 44 mm. 1970s.

Service receipt dated July 17th 1998 included.

DKK 20,000-25,000 / € 2,700-3,350

684

ROLEX

A gentleman's wristwatch of 18k gold. Model Submariner, ref. 1680. Chronometer certified automatic movement with date. Blue dial with gold hands and "nipple" hourmarkers. Rolex Oyster bracelet of 18k gold with folding clasp (usually fitted on GMT, Daytona or Yacht-Master). Circumference app. 20 cm. Watch diameter 40 mm. Ca. 1970.

Rolex box included.

DKK 110,000-120,000 / € 15,000-16,000



684



685

685

VACHERON & CONSTANTIN

A gentleman's wristwatch of 18k gold. Ref. 6394. Automatic movement with date, caliber K1072/1. Gold-colored dial with black hands and hour-markers. Exchanged winding crown. Black strap with C-buckle of gold-plated steel. Watch diameter app. 35 mm. 1960s.

Watch was regulated by Ravnkilde may 19th 2016.

Service receipt included.

DKK 40,000-50,000 / € 5,400-6,700



686

686

JAEGER-LECOULTRE

A gentleman's wristwatch of steel. Model Master Control. Automatic movement with date and power reserve. Silvered dial with hands and hourmarkers of white gold. Black strap with Jaeger-LeCoultre folding buckle of steel. Watch diameter app. 37 mm. 2001.

Purchased on Dec. 7th 2001.

Jaeger-LeCoultre box and certificates included.

DKK 30,000 / € 4,050

687

ROLEX

A gentleman's wristwatch of steel. Model Daytona, ref. 116520. Chronometer certified automatic chronograph movement. White dial with hands and hourmarkers of white gold. Rolex Oyster bracelet of steel with folding clasp. Circumference app. 20 cm. Watch diameter 40 mm. Ca. 2004.

Provenance: State Prosecutor for Serious Economic and International Crime Denmark

DKK 50,000 / € 6,700



687

688

BREITLING

A gentleman's wristwatch of gold and steel. Model Crosswind, ref. B13355. Chronometer certified chronograph movement with date. Black dial with hands and hourmarkers of gold. Breitling "pilot" bracelet of gold and steel with folding clasp. Circumference app. 21 cm. Watch diameter app. 42 mm. 2000s.

Breitling box and instruction manual included.

Provenance: State Prosecutor for Serious Economic and International Crime Denmark

DKK 10,000 / € 1,350



688



689

689

JAEGER-LECOULTRE

A gentleman's wristwatch of 18k gold. Model Master Control Grand Reveil. Automatic movement with perpetual calendar, moonphase and mechanical alarm. Light dial with hands and hourmarkers of gold. Brown Jaeger-LeCoultre strap with folding clasp. Watch diameter app. 43 mm. 2006.

Purchased on Jan. 18th 2006.

Jaeger-LeCoultre box and certificates included.

DKK 100,000-120,000 / € 13,500-16,000

690

ROLEX

A gentleman's wristwatch of 18k gold. Model Cosmograph, ref. 6265 "Tropical". Mechanical chronograph movement with manual winding, caliber 727. Slightly patinated "Tropical" dial with hands and hourmarkers of gold. Exchanged Rolex winding crown and tachymeter bezel. Rolex rivet bracelet of 18k gold, ref. 7205 with "71" endpieces. Circumference app. 19 cm. Two extra links included. Watch diameter app. 37 mm. 1973-74.

Watch is offered with a ref. 6241 caseback. Movement appears newly serviced.

DKK 400,000-500,000 / € 54,000-67,000



690

INDEX

A

Aagaard, C. F.	78
Abildgaard, N. A., attributed to	165
Ancher, Anna	56, 58, 60
Ancher, Michael	44, 47
	50, 53, 54, 55
	59, 61, 63, 117
Andersen, Hans Christian	174
	175, 183, 184
Andersen-Lundby, A.	124
Anker, Hermanus Franciscus	
(Herman) van den	45
Arnegger, Alois	101

B

Baagøe, Carl	109
Bache, Otto	41
Bibigi	544
Blancpain	675
Boucheron	562
Breitling	650, 688
Brendekilde, H. A.	106, 107
	108, 119, 125
Brendstrup, Thorald	16
Buccellati, Mario	532
Bulgari	571, 656

C

Cartier	459, 460
	461, 462, 463
	487, 529, 535
	536, 537, 539
	542, 545, 637
	649, 651, 653
Caulery, Louis de, attributed to	4
Chanel	641, 642, 643
	644, 645, 652, 662
Charles Packer & Co.	509
Chopard	448, 569
	570, 600, 635
	658, 659, 673

D

Dalsgaard, Christen	123
Dior	518
Dorph, Anton	116
Drachmann, Holger	115
Dreyer, Dankvart	131

E

Eckersberg, C. W.	10, 31, 40
-------------------	------------

F

Fauerholdt, Viggo	121
Fischer, Paul	51, 80, 81
	82, 83, 87
	89, 92, 93
	94, 110, 111

G

Garrard	634
Georg Jensen & Wendel	561
Grammaticus, Saxo	178
Griegst, Arje	450, 451, 452
Grün, Hugo	587
Gübelin	484

H

Haaland, Lauritz	85
Hammershøi, Vilhelm	76, 77
Hansen, Constantin	22, 34, 39
Hansen, Heinrich	26, 27
Harry Winston	660
Hendriks, Barend Leonardus	97
Henning, Gerhard	357, 369, 371
Hermès	638, 639, 640
Heuer	671
Heyerdahl, Hans Olaf	49, 88
Holbech, N. P.	25
Holberg, Ludvig	176
Holsøe, Carl	73, 91, 137
Hoppner, John, follower of	168
Humboldt, Alexander von	185
Huxley, Aldous	188
Hörner, Johan	5, 154, 155

I

Ilsted, Peter	90
---------------	----

J

Jaeger-LeCoultre	686, 689
Jagert, Willy	521
Jansonius, Johannes	181
Jensen, C. A.	9
Jensen, Georg	455
	456, 457, 623
Jensen, I. L.	35, 36
Jensen, I. L., school of	134
Jerichau Baumann, Elisabeth	48
Jerichau, Holger H.	105
Johansen, Viggo	118
Juel, Jens	162, 163
Justinian the Great	180

K

Kiærshou, F. C.	38
Klarlund	441, 614
Kløve, Jytte	580
Krog, Arnold	368
Krohg, Christian	65, 66, 67
Krøyer, P. S.	46, 62, 64
Kyhn, Vilhelm	37

L

Larsen, Johannes	70, 71, 72
Larsen, Knud	96
Leoni, Leandro	476
Liebermann, Max	75, 84
Locher, Carl	52
Louis Vuitton	646, 647, 648
Lundbye, Johan Thomas	128
Luther, Martin	179
Lynggaard, Ole	437, 438
	440, 442, 444
	446, 468, 475
	479, 534, 540
	576, 596, 632
Læssøe, Thorald	15, 17

INDEX

M

Mackeprang, A.	127
Marstrand, Wilhelm	12, 20
Martin-Hansen, Carl	366, 367
Melbye, Anton	98, 99
Mitchell, Margareth	187
Møhl-Hansen, Kristian	624
Møller, Andreas	164
Møller, J. H.	18
Mølsted, Christian	100
Mønsted, Peder	79, 102, 104 113, 114, 126

N

Neergaard, Hermania	170
---------------------	-----

O

Omega	674, 678, 679, 683
-------	--------------------

P

Pacht, Vilhelm	43
Palmstruch, J. W.	172
Patek Philippe	654, 657, 668 669, 670, 680
Philipsen, Theodor	129, 130

R

Raadsig, Peter	24
Rasmussen, Chr.	625
Rasmussen, I. E. C.	57
Recarlo	477
Regnault, Henri	33
Reid, John Robertson	135
Richardt, Ferdinand	42
Riley, John, studio of	1
Ring, L. A.	68, 69
Ring, Ole	86, 112, 132 133
Roed, Jørgen	21
Rohde, Johan	74
Rolex	655 661, 663, 664 665, 666, 667 672, 681, 682 684, 687, 690
Rørbye, Martinus	14, 29, 30

S

Schiøtt, August	95
Scott, Robert Falcon	186
Simonsen, Simon	136
Skovgaard, P. C.	6, 7, 8, 11
Sonne, Jørgen	32, 120
Sowerby, James	177
Storch, Frederik	19, 23
Sturluson, Snorri	182

T

Teniers II, David, follower of	166
Thurah, Laurids de	173
Tiffany & Co.	513, 527
Tudor	677
Tuxen, Laurits	103, 122

U

Universal	676
-----------	-----

V

Vacheron & Constantin	685
Van Cleef & Arpels	445, 449
Voigts, Carl Daniel	161

W

Wahl, Johann Salomon, attributed to	167
Weenix, Jan, attributed to	157
Wegener, Einar	147
Wegener, Gerda	138 139, 140, 141 142, 143, 144 145, 146, 148 149, 150, 151
WIN	466, 499
Wong, Peter	443

Z

Zahrtmann, Kristian	152
---------------------	-----

Ø

Ørsted, H.C.	185
--------------	-----

Å

Aagaard, C. F.	78
----------------	----



INTERNATIONAL AUCTION

Modern Art - 27 and 28 September 2016

Nordic Design - 28 and 29 September 2016





ANTIQUES

Upcoming international auction - December 2016



Jacques Dubois, attributed: A Louis XV gilt bronze mounted Japanese lacquer and vernis martin bureau à pente. C. 1750.

Estimate: DKK 400,000-600,000 / € 54,000-80,500



BRUUN RASMUSSEN

AUCTIONEERS OF FINE ART

CITES EXPORT PERMIT

Catalogue numbers marked with (©) are items covered by the Washington Convention. Items made or processed from 1947 and onwards are sold with a CITES certificate, which is valid within the EU. Items processed before 1947 do not require a CITES certificate for a sale within the EU. For export to countries outside the EU, a Danish CITES export permit is required for items processed both before and after 1947, and possibly also a corresponding import permit for the country, which the export of the item is intended for.

DISPATCH

Collection of purchases bought at traditional auctions must be no later than 2 weeks after the last auctionday.

Uncollected items will without further notice be sent into storage at the expense and risk of the buyer.

SALES RESULTS

Sales results from the latest auctions are available at our website: bruun-rasmussen.dk

PHOTO

Photos of all items are available at our website: bruun-rasmussen.dk

EURO

Bids and invoicing are made in DKK.

For the conversion from DKK into Euro, Bruun Rasmussen has used the official rate of exchange from Denmark's Nationalbank (the Danish National Bank) at the time of preparation of the catalogue.

The amount in Euro is, in Bruun Rasmussen's judgment, roughly adjusted to presentable figures.

CONDITION

Bruun Rasmussen draws attention to the fact that, as a rule, no information is provided regarding the condition of the lots (cf. conditions of purchase § 10).

However, we refer to our website: www.bruun-rasmussen.dk where information regarding condition, repairs, etc. can usually be found for the individual lot. Should this information be insufficient, further details can be obtained by contacting one of the experts of the department.

BANKERS

Danske Bank · Account: 30014310970638
IBAN: DK4130004310970638
Swift-BIC DABADKKK

BUSINESS REGISTRATION

CVR-nr. DK25472020

CITES EKSPORT TILLADELSE

Katalognumre markeret med (©) er effekter, der omfattes af Washingtonkonventionen. Effekter udført eller forarbejdet fra 1947 og frem sælges med CITES-certifikat gyldigt inden for EU. Effekter forarbejdet før 1947 kræver ikke CITES-certifikat før salg inden for EU. For udførsel til lande uden for EU kræves en dansk CITES-eksporttilladelse både for effekter udført før og efter 1947 samt muligvis en tilsvarende importtilladelse i det land, som effekten ønskes indført i.

AFHENTNING

Afhentning af effekter købt på traditionel auktion SKAL SKE senest 2 uger efter sidste auktionsdag.

Uafhentede effekter vil herefter uden yderligere varsel blive sendt til opbevaring for købers regning og risiko.

SALGSRESULTATER

Hammerslagspriser fra de seneste auktioner kan ses på vores hjemmeside: bruun-rasmussen.dk

FOTO

Fotos af alle effekter kan ses på vores hjemmeside: bruun-rasmussen.dk

EURO

Der bydes og faktureres i danske kroner.

Ved omregning fra DKK til Euro er anvendt Nationalbankens officielle valutakurs på tidspunktet for udarbejdelse af kataloget.

Beløbet i Euro er afrundet til et tal, der efter Bruun Rasmussens skøn fremtræder på en præsentabel måde i forhold til beløbet i DKK.

BEVARINGSTILSTAND

Bruun Rasmussen henleder opmærksomheden på, at katalognumrene som udgangspunkt ikke er forsynet med oplysninger om tilstand (jvf. købskonditionernes § 10). Vi henviser imidlertid til vores hjemmeside: www.bruun-rasmussen.dk, hvor der under det enkelte katalognummer ofte er oplysninger om bevaringstilstand, reparationer o. lign. Er disse oplysninger ikke tilstrækkelige kan én af afdelingens sagkyndige kontaktes for yderligere informationer.

BANKFORBINDELSE

Danske Bank · Konto: 30014310970638
IBAN: DK4130004310970638
Swift-BIC DABADKKK

VIRKSOMHEDSREGISTRERING

CVR-nr. DK25472020

CONDITIONS OF PURCHASE

§ 1. BIDDING

The buyer shall be the highest bidder at the "hammer price". Any person bidding on behalf of a third party shall be liable in surety for completion of the sale.

At the request of Bruun Rasmussen Kunstauktioner (hereinafter called Bruun Rasmussen), all bidders, whether they wish to make bids in person at the place of auction or commission bids by letter, fax or the homepage direct telephone bids or the homepage, should be able to document their ability to pay and be able to provide proof of identity at any time. Bruun Rasmussen is entitled to refuse to accept a bid if, when requested, adequate security or adequate payment on account has not been rendered.

Bids should be made by the bidder in person at the place of auction or by written commission by letter, fax or the homepage. For online auctions all bids are submitted via the homepage. Telephone bidding is possible within certain conditions made out by Bruun Rasmussen. Bruun Rasmussen is not to be held responsible for any errors that may occur using this service. The auctioneer shall have absolute discretion as to the increment of the bids. The auctioneer will also make decisions in all cases of doubt regarding the bidding.

Credit/debit card information must be registered with Bruun Rasmussen before bids can be submitted.

§ 2. PAYMENT

Purchases made at all Bruun Rasmussen traditional salesroom auctions are subject to a 30% fee (for wines, coins and stamps 25%), which covers 24% buyer's premium plus VAT of the premium.

Purchases made at all Bruun Rasmussen online auctions are subject to a 25% fee, which covers 20% buyer's premium and VAT of the premium.

Certain lots are sold in accordance with specific rules on normal VAT arrangement (hereinafter called normal VAT), so that the purchase price is the hammer price plus an additional 24% (for online auctions, wines, coins and stamps 20%) in buyer's premium and VAT of 25% levied on both the hammer price and the buyer's premium. The lots subject to Full VAT are indicated as such in the catalogue and on the homepage with an asterisk (*).

Danish VAT registered buyers shall provide Bruun Rasmussen with documentation of their SE-/CVR -number (VAT No.) as this has to be quoted on the invoice for goods bought at full VAT.

For some foreign buyers, specific VAT-exemption rules apply (cf. Article 3). VAT-exemption does not apply to private buyers from the EU who are considered as Danish buyers (cf. current Danish legislation on Special VAT Scheme for Sales of Works of Art, Collectors' items and Antiques by Public Auction).

The purchase price falls due for payment when the goods have been knocked down. Payment may be made in cash up to DKK 50,000, by Dankort, banker's cheque, traveller's cheque, Visa-, Master-, Diners Club- or Eurocard. Personal foreign cheques may only be used for payment by prior arrangement.

At traditional auctions payment for purchased items must be made during or immediately after the auction. Under all circumstances payment must be made no later than eight days from the date of the invoice. With online auctions, payment automatically takes place when the items are prepared for dispatch (circa 12 hours after the purchase has been made) using the credit/debit card details submitted by the purchaser. At the same time an invoice and dispatch information will be sent to the purchaser.

Should the purchase price not be paid by the due date, interest at 1.5 % per new month will be charged.

If the purchase price and interest are not paid within eight days after Bruun Rasmussen has sent its demand to the buyer, Bruun Rasmussen shall be entitled to rescind the sale and resell the goods at a Bruun Rasmussen auction or privately, and to demand reimbursement of any related losses from the defaulting

buyer. Any further profit on the sale shall be payable to the person who had deposited the goods for sale by auction.

If the defaulting buyer is entitled to proceeds from a sale of goods by Bruun Rasmussen, Bruun Rasmussen shall be entitled to set off its receivables against its payables to the defaulting buyer.

If the defaulting buyer has deposited other goods for sale, Bruun Rasmussen shall be entitled to sell such goods at a Bruun

Rasmussen auction without being bound by the reserve stipulated by the defaulting buyer. The defaulting buyer shall not be entitled to demand the surrender of goods deposited for sale as long as the debt payable to Bruun Rasmussen has not been discharged, regardless of whether the value of such goods may be deemed to exceed the debt payable.

Bruun Rasmussen shall be entitled to refuse a bid made by a buyer who is in default in respect to his payment obligations to Bruun Rasmussen, as well as a bid made by a third party on behalf of such a defaulting buyer. Bruun Rasmussen shall further be entitled to demand a deposit as a condition of accepting any future bids from such a purchaser.

§ 3. MONEY-BACK GUARANTEE

A. Purchases made on all traditional salesroom auctions are unconditional and can not be cancelled regardless of the type of bid such as absentee web bid, live-bidding or otherwise.

B. Online purchase of items by private individuals is subject to Danish consumer law, which extends 14 days of money-back guarantee. The purchaser is liable for any costs related to the transport of returned items.

Should a purchaser seek to avail himself or herself of the money-back guarantee, Bruun Rasmussen will refund the payment on receiving the returned items. Please note that the date on which accounts are debited is subject to the policy of the purchaser's bank/credit card company.

§ 4. EXEMPTION FROM VAT

Foreign buyers who meet the following conditions pay the applicable auction fees, cf. above, but are not charged Danish VAT. However, the Danish VAT must be deposited at Bruun Rasmussen until documentation has been provided to show that the goods have been exported as required by law.

A. Buyers who are VAT-registered in another EU country are exempt from paying Danish VAT when it can be documented that the item purchased has been transported to the address declared by the buyer to Bruun Rasmussen and specified on the invoice. In such cases, VAT must be settled in accordance with the rules in force in the country where the company is VAT-registered. It is advisable to check with the relevant local authorities.

B. Buyers domiciled outside the EU may be exempt from Danish VAT when it can be documented that the purchase has been transported out of the EU. As far as possible, Bruun Rasmussen issues the necessary export documents to be presented to the customs authorities, and reserves the right to charge a fee for doing so.

If the goods are being exported by a freight forwarder authorised by Bruun Rasmussen, the VAT need not be deposited. See the list of approved freight forwarders

§ 5. PAYMENT OF TAXES AND DUTIES

A. VAT-registered businesses in other EU Member States may opt out of exercising the option of VAT exemption and instead pay Danish VAT on second-hand goods/full VAT. Bruun Rasmussen must be informed of this before 10 am on the day after the purchase.

B. VAT-registered businesses in Denmark may choose to pay full VAT, cf. above. Bruun Rasmussen must be informed of this before 10 am on the day after the purchase.

§ 6. COLLECTION OF PURCHASES

The purchase price must be paid in full before the purchased lot can be passed over to the buyer. From the time of the lot being knocked down to the buyer, until its collection, the purchased lot will be held at the buyer's own expense and risk.

A storage fee will be charged for lots which have not been collected according to agreement. Lots which have been paid for but not collected will be stored at buyers expense. Lots not collected within 1 year will be resold at auction or privately at the buyer's expense.

§ 7. DISPATCH

Should Bruun Rasmussen undertake the packaging and forwarding of purchased goods, this shall be done at the buyer's own expense and risk. Bruun Rasmussen shall thus not be held liable neither for any damage caused to purchased goods during dispatch nor for any missing consignments.

§ 8. DROIT DE SUITE

In accordance with Danish copyright law, an additional royalty fee is to be paid for the purchase of works by contemporary Danish artist and some international artists who are either still alive or who have been dead for less than 70 years. The additional royalty fee will be collected by Bruun Rasmussen on behalf of Copydan, which is a Danish-based joint collecting society. Such works are marked with (CD) for Copydan next to the lot number.

The Copydan royalty fee is added to the auction price including the buyer's premium when the total exceeds €300.

Copydan royalty fees:

- 5% of the auction price and buyer's premium (excluding VAT) totalling up to €50,000.
- 3% of the auction price and buyer's premium (excluding VAT) of totals between €50,000 and €200,000.
- 1% of the auction price and buyer's premium (excluding VAT) of totals between €200,000 and €350,000.
- 0.5% of the auction price and buyer's premium (excluding VAT) of totals between €350,000 and €500,000.
- 0.25% of the auction price and buyer's premium (excluding VAT) of totals above €500,000.

Copydan royalties must not exceed €12,500 for an individual artwork.

The euro exchange rate has been set by Copydan for 2016 at DKK 746,02 per €100.

§ 9. EXPORT LICENCE

Applications for an export licence must be made to the Danish Cultural Assets Committee when required in accordance with current Danish legislation on the protection and preservation of cultural assets in Denmark. Where such a licence has not been obtained, the foreign buyer will be informed thereof immediately after the lot has been knocked down to the buyer. Another application will subsequently be sent to the Danish Cultural Assets Committee by Bruun Rasmussen on behalf of the buyer, now that the price is known. Should an export licence not be granted, the Danish Cultural Assets Committee would be obliged to acquire the purchased lot at the purchase price, and the buyer would thus not be bound to the purchase.

§ 10. DESCRIPTION OF LOTS

All lots are sold in the condition in which they are found when knocked down and as described in the catalogue and on the homepage with subsequently published changes and modifications. Description is done according to the best of Bruun Rasmussen's knowledge and on the cataloguing principles stated.

The lots auctioned are often of some age or of a kind which makes it possible that they may contain defects, deficiencies, or may have been subject to restoration or damage not necessarily stated in the catalogue and on the homepage. Pictures are for identification only and cannot be used for an evaluation of the condition of the goods.

Any person who wishes to bid at an auction should therefore satisfy himself of the condition of the lots for which he intends to bid by personal inspection at the preview held prior to the auction. The description is an indication of the prevailing opinion of scholars and expert at the time of the sale. If any doubts should

arise after the purchase regarding the genuineness of the purchased lot or its conformance with the description, Bruun Rasmussen should immediately be informed thereof.

Should the purchased lot be proved to be a forgery, or if the description contains material errors which lead to a considerably higher hammer price than that which a correct description would presumably result in, the buyer shall be entitled to cancel the purchase, after which the buyer shall be reimbursed for the total purchase price paid plus buyer's premium and VAT, when applicable.

For material errors in the description in respect to measurements or weight, compensation shall only be paid on a percentage basis in proportion to the difference.

The right of cancellation of a purchase in pursuance of the present conditions can only be exercised by the party who has bought the lot in question at Bruun Rasmussen and shall be subject to the presentation of a claim for cancellation in writing to Bruun Rasmussen within 2 years of the purchase date and to the purchased lot being returned to Bruun Rasmussen in the same condition in any and all respects which the purchased lot was in at the time of the lot being knocked down to the buyer.

In the event of cancellation the buyer shall not be entitled to claim payment of interest on the purchase price nor shall the buyer be entitled to claim compensation for any other expenses or loss incurred, including any possible loss of profit in connection with reselling.

It shall not be possible to state cancellation of a purchase in pursuance of the above provisions if:

- a the description on the day the lot was knocked down to the buyer was in accordance with the then generally accepted opinion of scholars and experts;
- b the only way of establishing whether the lot was a forgery at the time of the sale was the implementation of scientific processes, the validity of which was only acknowledged after the time of the sale, or which would have required a disproportionate amount of cost, or which would have been impossible to carry out without damaging the lot in question.

In addition to the time-limits stated above, all purchases are subject to the Statute of Limitations stipulated by Danish law by which Bruun Rasmussen is under no circumstance liable for purchases after 5 years from the date of purchase.

Bruun Rasmussen Auctioneers

Jesper Bruun Rasmussen, auctioneer

Jørgen Byriël, officially appointed external supervisor

COMMISSION

Bruun Rasmussen undertakes to execute commission bids for bidders who are unable to be present at the auction. It is a prerequisite that Bruun Rasmussen receives the commissions by letter, fax or telephone 24 hours before the start of the auction for the bidders' credit to be checked, if necessary. Bids by the homepage are to be received a minimum of 3 hours before the start of the auction. Bruun Rasmussen is not to be held responsible for any errors that may occur using this service.

CONDITION REPORTS

Bruun Rasmussen undertakes to provide further information about the state and condition of the lots if possible. This is regarded as a service for customers who are unable to make a personal inspection of the lots at the preview. Bruun Rasmussen stresses that the information given cannot be used as the basis for complaints; complaints can only be based on the description.

EXEMPTION FROM VAT

Buyers shall, according to § 2, pay full VAT on lots marked with an asterisk (*).

No Danish VAT is to be paid when VAT registered companies from other EU countries buy at Bruun Rasmussen and resell to private buyers. The private buyer then only has to pay VAT according to the rules in force in the country where the foreign company is VAT registered. For further information please consult your local authorities.

The above is an English translation of the Danish version of the Conditions of Purchase. In case of dispute, only the Danish version of the present Conditions of Purchase of Bruun Rasmussen is valid.

§ 1. BUDGIVNING

Køber er den byder, der får hammerslag. Den, der byder for andre, hæfter som selvskyldnerkautionist for berigtigelsen af købet.

På opfordring fra Bruun Rasmussen Kunstauktioner (herefter benævnt Bruun Rasmussen), skal alle bydere, hvadenten de ønsker at afgive et bud ved personligt fremmøde på auktionsstedet eller afgive en kommission pr. brev, fax eller hjemmeside eller byde direkte pr. telefon eller hjemmeside, kunne dokumentere deres betalingsdygtighed samt til enhver tid identificere sig. Bruun Rasmussen er altid berettiget til at nægte at acceptere et bud, hvis på forlangende ikke tilstrækkelig sikkerhed er stillet eller en passende å conto betaling har fundet sted.

Bud afgives af byderen ved personligt fremmøde på auktionsstedet eller ved skriftlig kommission enten pr. brev, fax eller hjemmeside. På online-auktioner afgives bud direkte fra hjemmesiden. Afgivelse af bud pr. telefon er muligt under visse forudsætninger, der afgøres af Bruun Rasmussen. Bruun Rasmussen påtager sig intet ansvar for eventuelle fejl eller fejlagelser, der måtte opstå ved brug af denne service. Auktionarius bestemmer overbuddets størrelse og træffer ligeledes afgørelse i alle tvivlstilfælde om budgivningen.

For at kunne byde på Bruun Rasmussens auktioner kræves forudgående registrering af byders betalingskort-/kreditkortoplysninger.

§ 2. BETALING

Ved køb på alle traditionelle auktioner tillægges hammerslagsprisen 30% (for vin, mønter og frimærker 25%), der dækker salær på 24% samt moms af salæret.

Ved køb på alle net-auktioner tillægges hammerslagsprisen 25%, der dækker salær på 20% samt moms af salæret.

Visse numre handles efter særlige regler til fuldmoms, så udover auktionsomkostninger på 24% (for net-auktioner, vin, mønter og frimærker dog 20%), beregnes moms på 25% af både hammerslag og auktionsomkostninger. Disse numre er mærket med en stjerne (*).

Danske momsregistrerede købere skal overfor Bruun Rasmussen oplyse deres SE-/CVR-nr. (moms-nr.), da dette skal anføres på de fakturaer, hvor varen købes i fuld moms.

For visse udenlandske købere gælder der særlige regler for afgiftsfritagelse jvf. § 4. Afgiftsfritagelse omfatter ikke EU private købere, som ligestilles med danske købere jvf. gældende dansk lovgivning om handel med brugte varer, kunstgenstande, samlerobjekter og antikviteter.

Købesummen forfalder til betaling ved tilslaget. Der kan betales kontant op til DKK 50.000 eller med Dankort, banknoteret check, rejsechecks, Visa-, Master-, Diners Club- eller Euro-card. Personlige udenlandske checks kan kun anvendes efter forudgående aftale.

På de traditionelle auktioner i Bredgade skal betaling af købte emner finde sted under eller umiddelbart efter auktionen og under alle omstændigheder senest 8 dage efter fakturadatoen. På net-auktionerne trækkes købesummen automatisk på det af kunden oplyste betalings-/kreditkort i forbindelse med, at det købte emne udtages til transport (ca. 12 timer efter dagens salg). Samtidig tilsendes køber faktura og transportoplysninger.

Betales købesummen ikke rettidigt, skal der svares rente heraf med 1,5% pr. påbegyndt måned.

Betales købesum og renter ikke inden 8 dage efter at Bruun Rasmussen har afsendt påkrav herom til køber, er Bruun Rasmussen berettiget til at annullere købet og bortsælge det købte på ny auktion hos Bruun Rasmussen eller underhånden og afkræve køber ethvert herved opstået tab. Et eventuelt overskud tilfalder den, der har indleveret det købte til auktion.

Har den misligholdende køber tilgodehavender fra salg af effekter hos Bruun Rasmussen, er Bruun Rasmussen berettiget til at berigtige ethvert tilgodehavende hos køber ved modregning.

Har den misligholdende køber indleveret andre effekter til salg, er Bruun Rasmussen berettiget til at bortsælge sådanne effekter på auktion hos Bruun Rasmussen uden at være bundet af en af den misligholdende køber fastsat mindstepris. Den misligholdende køber er ikke berettiget til at kræve udlevering af effekter indleveret til salg, så længe forfalden gæld til Bruun Rasmussen ikke er betalt, uanset om værdien af sådanne effekter må anses at overstige forfalden gæld.

Bruun Rasmussen er berettiget til at afvise bud afgivet af en køber, der er i misligholdelse med sine betalingsforpligtelser over for Bruun Rasmussen eller et bud afgivet af en anden på den pågældendes vegne, ligesom Bruun Rasmussen er berettiget til at kræve et depositum som betingelse for accept af fremtidige bud.

§ 3. FORTRYDELSESRET

A. Ved køb på alle traditionelle auktioner er der ikke fortrydelsesret. Køb kan derfor ikke fortrydes, uanset om budafgivning er via web-kommissionsbud, live-bidding eller på anden vis.

B. For privatkøb af emner på en online-auktion gælder loven om fjernsalg, herunder også 14 dages fortrydelsesret. Eventuelle omkostninger forbundet med transport af købte emner retur fra køber, betales af køber selv.

Såfremt køber benytter sig af sin fortrydelsesret, refunderer Bruun Rasmussen betalingen umiddelbart efter, at varen er sendt retur og modtaget af Bruun Rasmussen. Bruun Rasmussen gør opmærksom på, at det herefter er op til bankerne/kreditkortselskaberne, hvornår refusionen indgår på købers konto.

§ 4. AFGIFTSFRITAGELSE

Udenlandske købere, der opfylder en af nedenstående betingelser, betaler de gældende salærsatser jf. ovenstående, men bliver ikke belastet af dansk moms. Den danske moms deponeres dog hos Bruun Rasmussen, indtil eksporten er gennemført på dokumenteret lovpligtigt vis.

A. Købere, som er momsregistreret i et andet EU-land, kan fritages for at betale dansk moms, når det kan dokumenteres, at købet er transporteret til den adresse, som køber har angivet over for Bruun Rasmussen og som er anført på fakturaen. I sådanne tilfælde skal der afregnes moms i henhold til de gældende regler i det land, hvor virksomheden er momsregistreret. Det tilrådes at søge oplysning hos de lokale myndigheder.

B. Købere med bopæl uden for EU kan fritages for dansk moms, når det kan dokumenteres, at købet er transporteret ud af EU. Bruun Rasmussen udsteder så vidt muligt de fornødne eksportpapirer, som skal fremvises ved toldmyndighederne, og forbeholder sig ret til at opkræve et gebyr herfor.

Foretages eksporten af en af Bruun Rasmussen godkendt speditør skal momsen ikke deponeres. Se listen over godkendte speditører

§ 5. AFGIFTSBETALING

A. Momsregistrerede virksomheder i andre EU-lande kan undlade at gøre brug af muligheden for momsfrigtagelse og i stedet betale dansk brugtmoms/fuldmoms. Dette skal meddeles Bruun Rasmussen inden kl. 10 dagen efter købet.

B. Momsregistrerede virksomheder i Danmark kan vælge at betale fuldmoms jf. ovenstående. Dette skal meddeles Bruun Rasmussen inden kl. 10 dagen efter købet.

§ 6. UDLEVERING

Købesummen skal være betalt, inden det købte kan udleveres til køberen. Det købte henligger fra hammerslaget for købers regning og risiko. For varer, der ikke afhentes ifølge aftale efter hammerslaget, vil blive kørt på fjernlager på købers regning og risiko. Købte varer, der er betalt, men ikke afhentet, vil efter 1 år blive videresolgt for købers regning ved auktion eller underhånden.

§ 7. FORSENDELSE

Såfremt Bruun Rasmussen påtager sig at emballere og fremsende købte varer, sker dette på købers regning og risiko. Bruun Rasmussen kan således ikke drages til ansvar for skader forvoldt på købte varer under forsendelse eller for forsvundne forsendelser.

§ 8. KUNSTNERAFGIFT TIL COPY-DAN ^{CD}

Ifølge gældende dansk lovgivning om ophavsret skal der opkræves følgeretsvederlag for værker af nyere danske og visse udenlandske kunstnere, som enten er nulevende eller ikke har været døde i mere end 70 år. Følgeretsvederlaget opkræves af Bruun Rasmussen på vegne af kunstneres organisation Copydan. Disse værker er mærket (CD) for Copydan ud for katalognummeret.

Den såkaldte Copydan-afgift tillægges hammerslagsprisen inkl. salær, når beløbet overstiger €300.

Copydan-afgiften er:

- 5% af den del af hammerslagsprisen og salæret (ekskl. moms), der udgør indtil €50.000.
- 3% af den del af hammerslagsprisen og salæret (ekskl. moms), der ligger mellem €50.000 og €200.000.
- 1% af den del af hammerslagsprisen og salæret (ekskl. moms), der ligger mellem €200.000 og €350.000.
- 0,5% af den del af hammerslagsprisen (ekskl. moms), der ligger mellem €350.000 og €500.000.
- 0,25% af den del af hammerslagsprisen (ekskl. moms), der ligger over €500.000.

Copydan-afgiften kan ikke overstige €12.500 for det enkelte kunstværk.

Euro-kursen er fastsat af Copydan i 2016 til kurs 746,02 pr. €100.

§ 9. EKSPORTTILLADELSE

Kulturværdiudvalget er blevet ansøgt om eksporttilladelse, hvor dette kræves iflg. gældende dansk lovgivning om sikring af kulturværdier i Danmark. Foreligger en sådan ikke, vil dette blive meddelt den udenlandske køber umiddelbart efter hammerslaget. Derefter vil Bruun Rasmussen igen ansøge Kulturværdiudvalget på købers vegne, nu hvor prisen kendes. Gives eksporttilladelse ikke, er Kulturværdiudvalget forpligtet til at overtage det købte til den opnåede pris, hvilket betyder at købet bliver hævet for køber.

§ 10. BESKRIVELSE AF EMNER

Alt sælges i den stand, hvori det ved hammerslaget er at forefinde og som beskrevet i katalog eller hjemmeside med senere offentliggjorte ændringer og modifikationer.

Beskrivelsen er foretaget efter bedste overbevisning og under anvendelse af de anførte katalogiseringsprincipper.

De solgte effekter er ofte af en alder eller af en art, der bevirker, at de kan være behæftet med fejl, mangler, restaurering eller beskadigelser, der ikke nødvendigvis angives i katalog eller på hjemmesiden. Afbildninger i katalog eller på hjemmesiden er blot til identifikation og kan ikke anvendes til vurdering af effekternes stand.

Enhver der ønsker at byde på auktion, bør derfor ved selvsyn på de før auktionen afholdte eftersyn forvise sig om de ønskede effekters stand.

Beskrivelsen er udtryk for den på salgstidspunktet blandt lærde og eksperter herskende opfattelse.

Skulle der efter købet opstå tvivl om det købtes ægthed eller dets overensstemmelse med beskrivelsen, skal dette straks meddeles til Bruun Rasmussen.

Såfremt det må erkendes, at det købte er en forfalskning, eller såfremt beskrivelsen har været behæftet med væsentlige fejl, der har medført en væsentlig højere hammerslagspris, end en korrekt beskrivelse må antages at ville have resulteret i, er køber beret-

tiget til at annullere købet, hvorefter den samlede erlagte købesum tillagt auktionsomkostninger og evt. moms, vil blive refunderet køber.

Væsentlige fejl i beskrivelsen relateret til mål eller vægt erstattes kun procentuelt i forhold til differencen.

Retten til under de her anførte betingelser at annullere et køb kan kun udøves af den, der købte den pågældende effekt hos Bruun Rasmussen og er betinget af, at krav om annullering fremsættes skriftligt over for Bruun Rasmussen inden 2 år efter købsdagen, og af at det købte inden samme frist returneres til Bruun Rasmussen i den samme stand i enhver henseende, som det købte var i på hammerslagstidspunktet.

Køber kan i tilfælde af annullering ikke gøre krav på betaling af renter af købesummen og er ej heller berettiget til at kræve anden udgift eller tab, herunder eventuel mistet videresalgfortjeneste, dækket.

Et køb kan ikke kræves annulleret efter ovenstående bestemmelser, såfremt:

- a. beskrivelsen i katalog eller på hjemmesiden på hammerslagsdagen var i overensstemmelse med den på dette tidspunkt gældende opfattelse blandt lærde og eksperter.
- b. den eneste måde til på salgstidspunktet at få fastslået et falskneri var iværksættelsen af videnskabelige processer, hvis gyldighed først blev anerkendt efter salgstidspunktet, eller som ville have været uforholdsmæssigt omkostningskrævende eller uigennemførlige uden beskadigelse af den pågældende effekt.

I tillæg til ovenstående frist gælder de almindelige forældelsesregler i forældelsesloven, efter hvilke køber ikke under nogen omstændigheder kan gøre noget krav gældende over for Bruun Rasmussen, når der er forløbet mere end 5 år fra købsdagen.

Bruun Rasmussen Kunstauktioner
Jesper Bruun Rasmussen, Auktionsholder
Jørgen Byriel, Auktionsleder

KOMMISSIONER

Bruun Rasmussen påtager sig at byde i kommission for bydere, der ikke kan være til stede ved auktionen. Det er en forudsætning, at kommissioner indleveret pr. brev eller fax er Bruun Rasmussen i hænde i 24 timer før auktionens start, så om nødvendigt bydernes kreditværdighed kan undersøges. Via hjemmesiden er denne deadline 3 timer. Bruun Rasmussen påtager sig intet ansvar for eventuelle fejltagelser, der måtte opstå ved brug af denne service

KONDITIONSRAPPORTER

Bruun Rasmussen påtager sig, hvis det er muligt, at orientere nærmere om numrenes kondition og tilstand. Dette er ment som en service for kunder, der ikke selv har mulighed for ved selvsyn at undersøge numrene på eftersynet. Det understreges, at de givne oplysninger ikke kan gøres til genstand for reklamationer; her henvises til beskrivelsen.

FRITAGELSE FOR DANSK FULDMOMS

Købere skal ifølge § 2 betale fuldmoms af de varer der i katalog eller på hjemmesiden er markeret med stjerner (*).

Når virksomheder, der er momsregistrerede i andre EU-lande, køber hos Bruun Rasmussen og videresælger til private, skal der ikke betales dansk moms, men moms i henhold til de regler der gælder, hvor den udenlandske virksomhed er momsregistreret. Det tilrådes at søge oplysninger hos de lokale myndigheder.

ADDRESSES

BRUUN RASMUSSEN AUCTIONEERS

COPENHAGEN – BREDGADE

BREDGADE 33
DK-1260 COPENHAGEN K
Tel +45 8818 1111
E-mail: info@bruun-rasmussen.dk

COPENHAGEN – SUNDKROGSGADE

SUNDKROGSGADE 30
DK-2150 NORDHAVN
Tel +45 8818 1111
E-mail: info@bruun-rasmussen.dk

COPENHAGEN – BALTIKAVEJ

BALTIKAVEJ 10
DK-2150 NORDHAVN
Tel +45 8818 1111
E-mail: info@bruun-rasmussen.dk

AARHUS

SØREN FRICHS VEJ 34 D
DK-8230 ÅBYHØJ
E-mail: aarhus@bruun-rasmussen.dk

FYN

NADIA SEHESTEDT JUUL
Tel +45 8818 1183
E-mail: nsj@bruun-rasmussen.dk

ONLINE AUCTIONS – SUPPORT

BRUUN-RASMUSSEN.DK
Tel +45 8818 1114
E-mail: support@bruun-rasmussen.dk

REPRESENTATIVES:

FRANCE

DITTE HERBORG KROGH · PARIS
Tel +33 6 6185 4564
E-mail: dhk@bruun-rasmussen.dk

SOUTHERN FRANCE & LUXEMBOURG

PETER KOCH
Tel +45 4045 3403
E-mail: p.koch@bruun-rasmussen.dk

ITALY

JEANETTE IDA MØLLER · MILANO
Tel +39 340 053 9219
E-mail: j.moller@bruun-rasmussen.dk

SPAIN

VAGN ERIK KROGSØE
Tel +45 2445 1224
E-mail: vek@bruun-rasmussen.dk

KARIN K.J.V. FRIJS · MARBELLA

Tel +34 630 29 21 02
Fax +34 952 77 74 64
E-mail: k.frijs@bruun-rasmussen.dk

THAILAND

ANDERS NORMANN
Tel +66 818 177 273
E-mail: normann@bruun-rasmussen.dk

USA

RIKKE STORM · NEW YORK
Tel +1 917 930 5543
E-mail: rs@bruun-rasmussen.dk

BENEDICTE HALLOWELL

Tel and Fax +1 617 566 7333
E-mail: b.hallowell@bruun-rasmussen.dk

CONTACT DIRECTLY

KONTAKT DIREKTE

HOVEDNUMMER / MAIN NUMBER

Bruun Rasmussen Auctioneers +45 8818 1111

ADMINISTRATION

Jakob Dupont, CEO +45 8818 1081
dupont@bruun-rasmussen.dk

KUNDESERVICE / CUSTOMER SERVICE

kundeservice@bruun-rasmussen.dk +45 8818 1010
customerservice@bruun-rasmussen.dk +45 8818 1010

KOMMISSIONER / COMMISSIONS

Lise Winther Wobido +45 8818 1013
Anja Bering Hansen +45 8818 1028
bids@bruun-rasmussen.dk

BESTILLING AF KATALOGER / CATALOGUE REQUESTS

Kundeservice / Customer service +45 8818 1111

AUKTIONS RÅDGIVNING / AUCTION GUIDANCE

Franziska Kampmann +45 8818 1026
fka@bruun-rasmussen.dk

TRANSPORT / TRANSPORTATION

transport@bruun-rasmussen.dk +45 8818 1055

VURDERING OG INFORMATION / VALUATION AND INFORMATION

INDBOVURDERINGER / VALUATION AT YOUR HOME

David Utzon-Frank +45 8818 1221
duf@bruun-rasmussen.dk

Kasper Nielsen +45 8818 1121
kn@bruun-rasmussen.dk

Casper Behrendtzen +45 8818 1235
cab@bruun-rasmussen.dk

Hans Ruben +45 8818 1231
hru@bruun-rasmussen.dk

Ralph Lexner +45 8818 1161
rl@bruun-rasmussen.dk

BØGER / BOOKS

Lærke Bøgh +45 8818 1217
lb@bruun-rasmussen.dk

FRIMÆRKER / STAMPS

Lars Godsk Jørgensen +45 8818 1211
lgj@bruun-rasmussen.dk

MØNTER / COINS

Michael Fornitz +45 8818 1201
mfo@bruun-rasmussen.dk

MODERNE DESIGN / MODERN DESIGN

Peter Kjølgaard Jensen +45 8818 1191
pkj@bruun-rasmussen.dk

Ole Ravn +45 8818 1192
olr@bruun-rasmussen.dk

MODERNE KUNST / MODERN ART

Niels Raben +45 8818 1181
nr@bruun-rasmussen.dk

Niels Boe Hauggaard +45 8818 1182
nbh@bruun-rasmussen.dk

PORCELÆN, GLAS OG ORIENTALSK KUNSTINDUSTRI / CERAMICS, GLASS AND ORIENTAL WORKS OF ART

Ralph Lexner +45 8818 1161
rl@bruun-rasmussen.dk

Charlotte Hviid +45 8818 1162
chv@bruun-rasmussen.dk

RUSSISK / RUSSIAN

Martin Hans Borg +45 8818 1128
mhb@bruun-rasmussen.dk

SMYKKER / JEWELLERY

Katrin Mikkelsen Sørensen +45 8818 1174
kms@bruun-rasmussen.dk

SØLV / SILVER

Amalie Hansen +45 8818 1194
amh@bruun-rasmussen.dk

TÆPPER / CARPETS

Henrik Schleppegrell +45 8818 1145
hsc@bruun-rasmussen.dk

VIN / WINE

Morten Stenør Larsen +45 8818 1207
msl@bruun-rasmussen.dk

VÅBEN / WEAPONS

David Utzon-Frank +45 8818 1221
duf@bruun-rasmussen.dk

ÆLDRE KUNST / FINE ART

Kasper Nielsen +45 8818 1121
kn@bruun-rasmussen.dk

Birte Stokholm +45 8818 1122
bst@bruun-rasmussen.dk

ÆLDRE MØBLER / FURNITURE

Anders Fredsted +45 8818 1142
afr@bruun-rasmussen.dk

Henrik Schleppegrell +45 8818 1145
hsc@bruun-rasmussen.dk

COMMISSION BIDS

KOMMISSIONSBUD

It is possible to leave commission bids if you can not be present at the auction yourself. This service is free of charge.

When leaving a commission bid, you are instructing our customer service to bid up to a specified amount on your behalf.

The situation can occur that another buyer has already bid the same as you were prepared to. Are you then willing to bid further? If not the lot will be sold to another buyer.

If you do not wish to exceed your bid then write "Max", for maximum, next to the amount. You can also allow us to raise your bid by approx. 15% or approx. 25%.

The hammer price may be higher or lower than the estimated price, so it is possible to buy below the estimate. Bruun Rasmussen will always buy at the lowest price possible, as if you yourself had been present at the auction.

All commission bids are strictly confidential.

Commission bids must be submitted no later than **24 hours** prior to the start of the auction.

HOW TO MAKE A COMMISSION BID:

Complete the commission form with all pertinent information.

Indicate the lot number.

Indicate the amount you are prepared to bid.

Should this amount be the absolute maximum, please write "Max" in the appropriate column.

You can also allow us to bid by up to approx. 15% or approx. 25% more by indicating so.

Sign the commission form and make sure that Bruun Rasmussen receives it **24 hours** prior to the start of the auction.

If the information should be insufficient, Bruun Rasmussen can abstain from bidding. Bruun Rasmussen can not be held responsible for error in bidding or failure to execute bids.

INTERNET:

Commission bids can be submitted via website bruun-rasmussen.dk directly from the page with the item you want to submit a bid for.

Deadline for submissions of bids via the website is **3 hours** prior to the start of the auction.

Submitted bids are shown under "Your bids" when you are logged in. Please contact technical support on +45 8818 1114 for questions about the registration and submission of bids on the website.

For additional information, please consult "Conditions of Purchase" §1.

TELEPHONE BIDDING:

Should you wish to bid at auction by telephone, please inform Bruun Rasmussen of your name and telephone number, as well as which catalogue numbers you are interested in, no later than **3 hours** prior to the start of the auction. You will then be contacted shortly before the relevant lot comes under the hammer, thereby allowing you to participate without being in the auction room yourself.

For additional information, please consult "Conditions of Purchase" §1.

Det er muligt at afgive kommissionsbud, hvis De ikke selv kan være til stede på auktionens dag. Denne service er gratis.

Når De afgiver en kommission, beder De vores kundeservice på Deres vegne byde op til et af Dem bestemt beløb i hammerslag.

Der kan opstå den situation, at en anden køber allerede har budt det beløb, som De ønsker at afgive. Er De da villig til at gå et bud højere eller er De indforstået med at nummeret sælges til anden side?

Ønsker De ikke at byde højere så skriv "Max" ud for beløbet. Er De i tvivl om hvor højt De vil byde, kan De hæve budet med op til ca. 15% eller ca. 25%.

Salgsprisen kan blive højere eller lavere end vurderingen, så der er også mulighed for at købe til under den angivne vurdering. Vor kundeservice køber altid så billigt som muligt til Dem, som havde De selv været tilstede på auktionen.

Alle kommissioner behandles strengt fortroligt.

Kommissionsbud skal være Bruun Rasmussen i hænde senest **24 timer** før auktionens start.

SÅDAN BYDER DE:

Udfyld blanketten kommissionsbud med alle oplysninger.

Angiv katalognummer.

Angiv beløbet De ønsker at byde.

Er dette Deres absolutte maximum bedes De anføre "Max" i kolonnen.

De kan også forhøje Deres bud med henholdsvis ca. 15% eller ca. 25%, ved at indikere dette i kolonnen.

De bedes underskrive kommissionsblanketten og sikre Dem, at Bruun Rasmussen modtager den senest **24 timer** før auktionens start.

Hvis Deres oplysninger ikke er tilstrækkelige, kan Bruun Rasmussen unklare at byde for Dem, ligesom Bruun Rasmussen ikke kan gøres ansvarlig for fejl ved budgivning.

INTERNET:

Kommissionsbud kan afgives på hjemmesiden bruun-rasmussen.dk direkte fra siden med den effekt, De ønsker at byde på.

Seneste afgivelse af bud via hjemmesiden er **3 timer** før auktionens start.

Afgivne bud kan ses på hjemmesiden under "Deres bud", når de er logget ind. Kontakt teknisk support på 8818 1114 for spørgsmål om registrering og budgivning via internettet.

For yderligere information, se "Købskonditioner", §1.

TELEFONBUD:

Såfremt De ønsker at byde pr. telefon, bedes De oplyse Bruun Rasmussen Deres navn og telefonnummer samt hvilke katalognumre, De ønsker at byde på, senest **3 timer** før auktionens start. De vil så blive ringet op kort før, den aktuelle vare kommer under hammeren, og De kan på denne måde deltage i auktionen uden selv at være til stede.

For yderligere information, se "Købskonditioner" på bruun-rasmussen.dk under "Guide".

COMMISSION BIDS

KOMMISSIONSBUD

BREDGADE

Skal være Bruun Rasmussen i hænde senest **24 timer** før auktionens start.
Must be submitted no later than 24 hours prior to the start of the auction.

AUKTION NR AUCTION NO: **866**

Navn Name: *

Adresse Address: *

Postnr./by City: *

Land Country: * Fax:

Tel: *

e-mail: CVR-nr. VAT No.:

Bank: Konto nr. Acct. No.:

Adresse Address:

Postnr./By City: Land Country:

Tel: Kontaktperson Contact:

Obligatoriske felter er mærket med en stjerne * *Mandatory fields are marked with an asterix **

Undertegnede giver hermed fuldmagt til Bruun Rasmussen Kunstauktioner A/S om på mine vegne at købe nedennævnte katalognumre så fordelagtigt som muligt, inden for det af mig anførte beløb, i hammerslag.
I hereby request that Bruun Rasmussen bid on my behalf on the following lots up at the prices indicated below.

Undertegnede har udfyldt ovennævnte med de ønskede oplysninger, samt har accepteret købskonditionerne.
The undersigned has supplied the required information and agrees to be bound by the conditions of purchase.

Signatur: * B.R. kunde-nr. Client No.:

Jeg ønsker at modtage salgsresultater på de emner jeg har budt på via email dagligt efter auktion
I wish to receive sales results on the items I have been bidding on via e-mail every day after the auction

på e-mail adressen *on this e-mail address:*

Katalog nr. Lot. No.	Beskrivelse Description	Bud kr. Bid DKK	Max	+15%	+25%

BRUUN RASMUSSEN KUNSTAUKTIONER A/S

Bredgade 33 · DK-1260 København K · Tel +45 8818 1111 · Fax +45 8818 1112 · bids@bruun-rasmussen.dk · bruun-rasmussen.dk

Fortsættes næste side *Please turn over*



MOMS OG KUNSTNERAFGIFT

BUYER'S STANDARD PREMIUM

30% AUCTIONEERS' MARGIN SCHEME

As of 1 January 1995 new EC regulations came into effect regarding the sale of secondhand goods, works of art, collector's items and antiques; these items may now be traded under the Auctioneers' Margin Scheme.

Under the Auctioneers' Margin Scheme the premium only is subject to VAT, i.e. the hammer price is exempted from VAT. The buyer's premium of 25% will thus henceforth include non-refundable VAT.

FULL VAT *

will be charged on goods that cannot be traded under the Auctioneers' Margin Scheme. These lots are marked with an asterisk *. The buyer pays the auction premium of 24% plus 25% VAT on the hammer price as well as the buyer's premium.

BUYER'S REDUCED PREMIUM 24%

is paid by buyers fulfilling the following terms/conditions:

1. Danish VAT registered buyers may choose to pay the 24% buyer's premium + 25% VAT on the total amount (Full VAT). The buyer may have the total VAT refunded and thus pays 24% in buyer's premium only.
2. VAT registered buyers in other EU countries may avoid Danish VAT by using their VAT registration number and thereby pay a buyer's premium of 24% only.
3. Residents of countries outside the EU meeting the Danish customs authorities' requirements regarding the export of goods pay the buyer's premium of 24% only (see Conditions of Purchase §3, Exemption from VAT).

ARTISTS' ROYALTIES PAYABLE TO COPY-DAN ^{CD}

Pursuant to current Danish legislation on copyright an artists' royalty of 5% of the total price exclusive of VAT (i.e. hammer price plus buyer's premium 24%) shall be collected on works of modern art by all Danish and most foreign artists. These works are marked ^{CD} for Copy-Dan next to the lot number.

For further information please refer to the Conditions of Purchase.

STANDARD AUKTIONSOMKOSTNINGER

30% - BRUGT MOMS

1. januar 1995 trådte nye love i kraft i EU vedrørende moms ved handel på auktion med brugte varer, kunstgenstande, samlerobjekter og antikviteter, der nu kan handles til brugt moms.

Efter de nye regler er det kun auktionsomkostninger, der skal tillægges moms, og ikke som tidligere varens fulde pris. I auktionsomkostninger er indregnet ikke fradragsberettiget moms.

FULD MOMS *

anvendes for visse varer som ikke kan handles i brugt moms. Disse er mærket med en stjerne *. Købere skal betale 24% i auktionsomkostninger, hvortil lægges 25% moms af hammerslaget og auktionsomkostningerne.

REDUCEREDE AUKTIONSOMKOSTNINGER 24%

betales af købere der opfylder følgende betingelser:

1. Danske momsregistrerede købere kan vælge at betale 24% i auktionsomkostninger + 25% moms af hele (fuldmoms). Momsbeløbet kan køber modregne, og betaler derved 24% i auktionsomkostninger.
2. Momsregistrerede købere i andre EU-lande kan, ved at anvende deres EU-momsnr., undgå den danske moms og derved betale 24% i auktionsomkostninger.
3. Alle købere med bopæl i et land uden for EU, der opfylder de danske toldmyndigheders krav i forbindelse med eksport, betaler derved 24% i auktionsomkostninger (se købskonditioner, §4, Afgiftsfrigørelse).

KUNSTNERAFGIFT TIL COPY-DAN ^{CD}

Ifølge gældende dansk lovgivning om ophavsret, skal der opkræves 5% i kunstnerafgift af hammerslagsprisen med tillæg af auktionsomkostninger på 24% excl. moms på værker af alle nyere danske og de fleste udenlandske kunstnere. Disse værker er mærket ^{CD} for Copy-Dan ud for katalognummeret.

For nærmere information henvises til købskonditionerne.

R ANTIQUES