

NORDIC DESIGN

International auction 865



BRUUN RASMUSSEN

AUCTIONEERS OF FINE ART

N O R D I C D E S I G N

International auction 865



A U C T I O N

8 - 9 June 2016

P R E V I E W

Thursday	26 May	3 pm - 6 pm
Friday	27 May	11 am - 5 pm
Saturday	28 May	11 am - 4 pm
Sunday	29 May	11 am - 4 pm
Monday	30 May	11 am - 5 pm

or by appointment



BRUUN RASMUSSEN

AUCTIONEERS OF FINE ART

Bredgade 33 · DK-1260 Copenhagen K · Tel +45 8818 1111 · Fax +45 8818 1112
info@bruun-rasmussen.dk · bruun-rasmussen.com



Lot 978

DAYS OF SALE

FINE ART + ANTIQUES

Tuesday	31 May		
	4 pm	Paintings and drawings	1 - 135

ORIENTAL SALE

Wednesday	1 June		
	2 pm	Oriental art	150 - 233

FINE ART + ANTIQUES

Wednesday	1 June		
	4 pm	Oriental carpets	234 - 287

Thursday	2 June		
	2 pm	Russian sale	288 - 333
		Silver, glass and ceramics	334 - 363
		Furniture, clocks and bronzes	364 - 494

Monday	6 June		
	3 pm	Jewellery and handbags	495 - 662
		Wristwatches	663 - 704

MODERN ART

Tuesday	7 June		
	4 pm	Modern paintings and sculptures	705 - 848

Wednesday	8 June		
	2 pm	Modern paintings and sculptures	849 - 915
		Prints	916 - 958

NORDIC DESIGN

Wednesday	8 June		
	4 pm	Silver	959 - 988
		Ceramics	989 - 1027

Thursday	9 June		
	4 pm	Furniture, lamps and carpets	1028 - 1183

DEADLINE FOR CLAIMING ITEMS: WEDNESDAY 22 JUNE

Items bought at Auction 865 must be paid no later than eight days from the date of the invoice and claimed on Bredgade 33 by Wednesday 22 June at the latest. Otherwise, they will be moved to Bruun Rasmussen's storage facility at Baltikavej 10 in Copenhagen at the buyer's expense and risk. This transportation will cost DKK 100 per item VAT included, and storage will cost DKK 100 per item per week VAT included.



NORDISK DESIGN

International auktion 865



AUKTION

8. - 9. juni 2016

EFTERSYN

Torsdag	26. maj	kl. 15 - 18
Fredag	27. maj	kl. 11 - 17
Lørdag	28. maj	kl. 11 - 16
Søndag	29. maj	kl. 11 - 16
Mandag	30. maj	kl. 11 - 17

eller efter aftale



BRUUN RASMUSSEN

KUNSTAUKTIONER

Bredgade 33 · 1260 København K · Tel +45 8818 1111 · Fax +45 8818 1112
info@bruun-rasmussen.dk · bruun-rasmussen.dk



AUKTIONSKALENDER

FINE ART + ANTIQUES

Tirsdag	31. maj kl. 16	Malerier og tegninger	1 - 135
---------	-------------------	-----------------------	---------

ORIENTAL SALE

Onsdag	1. juni kl. 14	Orientalisk kunst	150 - 233
--------	-------------------	-------------------	-----------

FINE ART + ANTIQUES

Onsdag	1. juni kl. 16	Orientaliske tæpper	234 - 287
--------	-------------------	---------------------	-----------

Torsdag	2. juni kl. 14	Russisk auktion	288 - 333
		Sølv, glas og keramik	334 - 363
		Møbler, ure og bronzer	364 - 494

Mandag	6. juni kl. 15	Smykker og dametasker	495 - 662
		Armbåndsure	663 - 704

MODERN ART

Tirsdag	7. juni kl. 16	Moderne malerier og skulpturer	705 - 848
---------	-------------------	--------------------------------	-----------

Onsdag	8. juni kl. 14	Moderne malerier og skulpturer	849 - 915
		Grafik	916 - 958

NORDIC DESIGN

Onsdag	8. juni kl. 16	Sølv	959 - 988
		Keramik	989 - 1027

Torsdag	9. juni kl. 16	Møbler, belysning og tæpper	1028 - 1183
---------	-------------------	-----------------------------	-------------

SIDSTE FRIST FOR AFHENTNING: ONSDAG DEN 22. JUNI

Effekter købt på auktion 865 skal være betalt senest 8 dage efter fakturadatoen og afhentet i Bredgade 33 senest onsdag den 22. juni. I modsat fald bliver de transporteret til Bruun Rasmussens lager på Baltikavej 10 i Københavns Nordhavn for købers regning og risiko. Transporten koster 100 kr. pr. effekt inkl. moms, og opbevaringen koster 100 kr. pr. effekt pr. påbegyndt uge inkl. moms.



Lot 1127

The Opening of the Preview in Bredgade 33

Thursday 26 May 3 pm

Gallery Talk: Trampedach, Salerom

- 4 pm “Anecdotes about Kurt Trampedach – the artist and the friend”
by gallerist Patricia Asbæk.
- 4:30 pm Guitarist Dennis Flacheberg and saxophonist Anders Bast will play instrumental classics, while jazz singer Katarina Stahl will accompany them with evocative songs.

Friday 27 May

Gallery Talk: Fabergé, First Floor (room 1-8)

- 3 pm Thomas Thulstrup, director of the Danish art museum Koldinghus, will give a talk about the jeweller Fabergé in connection with our auction of art and antiques from Russia and the art museum’s current exhibition “Fabergé – The Tsar’s jeweller and the connections to the Danish royal family.”

Åbningen af eftersynet i Bredgade 33

Torsdag 26. maj kl. 15

Gallery Talk: Trampedach, Auktionssalen

- Kl. 16.00 “Anekdoter om Kurt Trampedach – kunstneren og vennen”
ved gallerist Patricia Asbæk.
- Kl. 16.30 Guitarist Dennis Flacheberg og saxofonist Anders Bast spiller instrumentale klassikere, og jazzsangerinde Katarina Stahl synger stemningsfulde numre.

Fredag 27. maj

Gallery Talk: Fabergé, 1. sal (rum 1-8)

- Kl. 15.00 Museumsdirektør Thomas Thulstrup fra Koldinghus fortæller om juveleren Fabergé i anledning af vores auktion over kunst og antikviteter fra Rusland og museets aktuelle udstilling “Fabergé – Zarens hofjuveler og forbindelsen til den danske kongefamilie”.

Sjældne designkoner fra 1950'erne

Med en enestående sans for både formgivning og håndværk tog danske møbelarkitekter verden med storm i 1940'erne og 50'erne. Sommerens designauktion er en kraftpræstation ud over det sædvanlige og indeholder nogle af de mest sjældne møbler fra dansk designhistories guldalder.

Den lange version af Hans J. Wegners poetiske "Delfinstol" fra 1955 er uden sammenligning det ultimative trofæ for de fleste samlere af nordisk møbelkunst. Den blev formgivet til Københavns Snedkerlaugs Udstilling i 1950 og er kun produceret i ganske få eksemplarer hos snedkermester Johannes Hansen. Liggestolen leder som mange andre af Wegners møbler tankerne hen på repræsentanter fra dyreriget – i dette tilfælde en springende delfin. Ingen tvivl om, at stolen er bærer af en uomtvistelige skønhed, men for arkitekten selv var det perfekte møbel imidlertid en utopi. Mange af hans møbler fungerede derfor som grundmodeller, der senere blev videreudviklet i et utal af nye versioner. Med sine reminiscenser af den første foldestol fra 1947 er Delfinen således blevet til ud fra princippet om, at "man ikke kan lave noget, der er endeligt", som Wegner selv udtrykte det ved adskillige lejligheder. Hos Bruun Rasmussen er vi dog af den opfattelse, at liggestolen står som en af Wegners mest fuldendte bedrifter (kat.nr. 1076).

Med Poul Kjærholms "Flitsbuestol" fra 1952 er der tale om lidt af en sensation – den har nemlig aldrig tidligere været udbudt på auktionsmarkedet. Prototypen er kun udført i to eksemplarer, hvoraf auktionens model har tilhørt arkitekten selv og indtil nu været i hans families eje. Hvilestolen hører til hans allertidligste eksperimenter fra året, hvor han tog sin afgangseksamen fra Kunsthåndværkerskolen i København. En tid, hvor han definerede det særegne og stilrene formsprog, der skulle vise sig at blive den gennemgående rettesnor for hans møbler. Kjærholm var dybt forankret i den danske håndværkstradition, og med den udbudte stol udfordrede han træets egenskaber til det yderste og skabte et møbel, der er lige så meget skulptur som funktionelt objekt (kat. nr. 1113).

Der findes ikke længere så mange uopdagede perler i dansk møbelhistorie. Det er dog tilfældet med barskabet fra 1951 af professor og arkitekt Kaj Gottlob, der ufortjent står lidt i skyggen af periodens andre betydelige arkitekter. Han satte et markant aftryk på offentlige bygningsværker i mellem- og efterkrigstiden, heriblandt Knippelsbro i København, men tegnede også interiør og samarbejdede i mange år med snedkermester A.J. Iversen. Sammen skabte de bl.a. nogle få skabsmøbler af den ypperste håndværksmæssige kvalitet, som det fritstående barskab er et fint eksempel på. Gottlob har her formået at forene en stram distinkt formgivning med et dekorativ udtryk i form af intarsia i udsøgte træsorter. I lukket stand fremstår skabet som en skulptur, men når det åbnes minder det om et teater, der iscenesætter det festlige i at mixe sig en drink (kat.nr. 1119).

Omend ikke uopdaget, så findes der mange andre designperler på sommerens auktion – heriblandt Frits Henningsens kupésøfa i en sjælden variant betrukket med originalt patineret nigeriskind fra 1936 og Arne Jacobsens lille unikaskrivebord, der blev formgivet omkring 1960 som en del af det originale interiør til hans kendte "Atriumhuse" ved Bellevue (kat.nr. 1042 og 1141).


Jesper Bruun Rasmussen

Rare Design Icons from the 1950s

With a unique sense for both design and craftsmanship, Danish furniture designers took the world by storm in the 1940s and 50s. This summer's design auction is an extraordinary feat, since it contains some of the most rare furniture pieces from the golden age of Danish design history.

The long version of Hans J. Wegner's poetic "Dolphin Chair" from 1955 is by far the ultimate trophy for most collectors of Scandinavian furniture design. It was designed for the Copenhagen Cabinetmakers' Exhibition in 1950 and was only produced in a few copies by cabinetmaker Johannes Hansen. The deckchair, like many other pieces of Wegner's furniture, resembles a representative of the animal kingdom – in this case, a leaping dolphin. There is no doubt that the chair in its design is undeniably beautiful, but for the architect himself the perfect piece of furniture, however, was a utopian concept. Many of his furniture pieces therefore functioned as basic designs, which were then later developed into a myriad of new versions. With its echoes from Wegner's first folding chair from 1947 the Dolphin Chair was therefore made with the idea in mind that "you cannot make something that is definitive," which Wegner himself articulated on several occasions. At Bruun Rasmussen, we are, however, of the opinion that the deckchair stands out as one of Wegner's most complete accomplishments (cat. no. 1076).

With Poul Kjærholm's "Bowstring Chair" from 1952 we have a bit of a sensation on our hands, since the piece has never previously been offered on the auction market. The prototype has only been made in two copies, and the one up for auction has belonged to the architect himself and until now been in his family's possession. The easy chair belongs to Kjærholm's earliest experiments from the year when he graduated from the Danish Design School in Copenhagen. It was a time when he defined the distinctive and stylish idiom that would prove to be the consistent guideline for his furniture design. Kjærholm was deeply rooted in the Danish tradition of craftsmanship, and with the chair up for auction he truly challenged the properties of wood as a material and created a furniture piece that is as much a sculpture as a functional object (cat. no. 1113).

There are not many undiscovered gems left in Danish furniture history. However, this is actually the case with the bar cabinet from 1951 by professor and architect Kaj Gottlob, who undeservedly has been a bit overlooked compared to the period's other significant architects. He placed a distinctive mark on public buildings during the mid- and post-war period, including the bridge Knippelsbro in Copenhagen, but he also designed interiors and collaborated with the cabinetmaker A.J. Iversen for many years. Together they created only a handful of cabinets of the finest craftsmanship, which the freestanding bar cabinet is a fine example of. Gottlob has here managed to unite a tight and distinct design with a decorative expression in the form of the marquetry in exquisite types of wood. In its closed form the cabinet almost looks like a sculpture, but when opened it resembles a theatre stage whereupon drinks can be mixed in a festive fashion (cat. no. 1119).

Although not undiscovered, there are many other design gems at the summer's auction – including Frits Henningsen's high back sofa in a rare version, upholstered with original, patinated Niger leather from 1936 and Arne Jacobsen's small unique desk, which was designed around 1960 as part of the original interior of his well-known "Atrium" houses at Bellevue, north of Copenhagen (cat. no. 1042 and 1141).


Jesper Bruun Rasmussen

SPECIALISTS IN DESIGN



Design
Peter Kjelgaard
+45 8818 1191
pkj@bruun-rasmussen.dk



Design
Ole Ravn
+45 8818 1192
olr@bruun-rasmussen.dk



Design
Amalie Hansen
+45 8818 1194
amh@bruun-rasmussen.dk



Design
Anna B. Widenborg
+45 8818 1187
awi@bruun-rasmussen.dk



Design
Andreas Krabbe
+45 8818 1193
ank@bruun-rasmussen.dk



Paintings and design
Peter Beck – Aarhus
+45 8818 1186
pb@bruun-rasmussen.dk



Design
Peter Tholstrup – Aarhus
+45 8818 1195
pt@bruun-rasmussen.dk



Paintings and design
Frederik Bruun Rasmussen
+45 8818 1003
fbr@bruun-rasmussen.dk



Silver and branding
Alexa Bruun Rasmussen
+45 8818 1091
alexa@bruun-rasmussen.dk

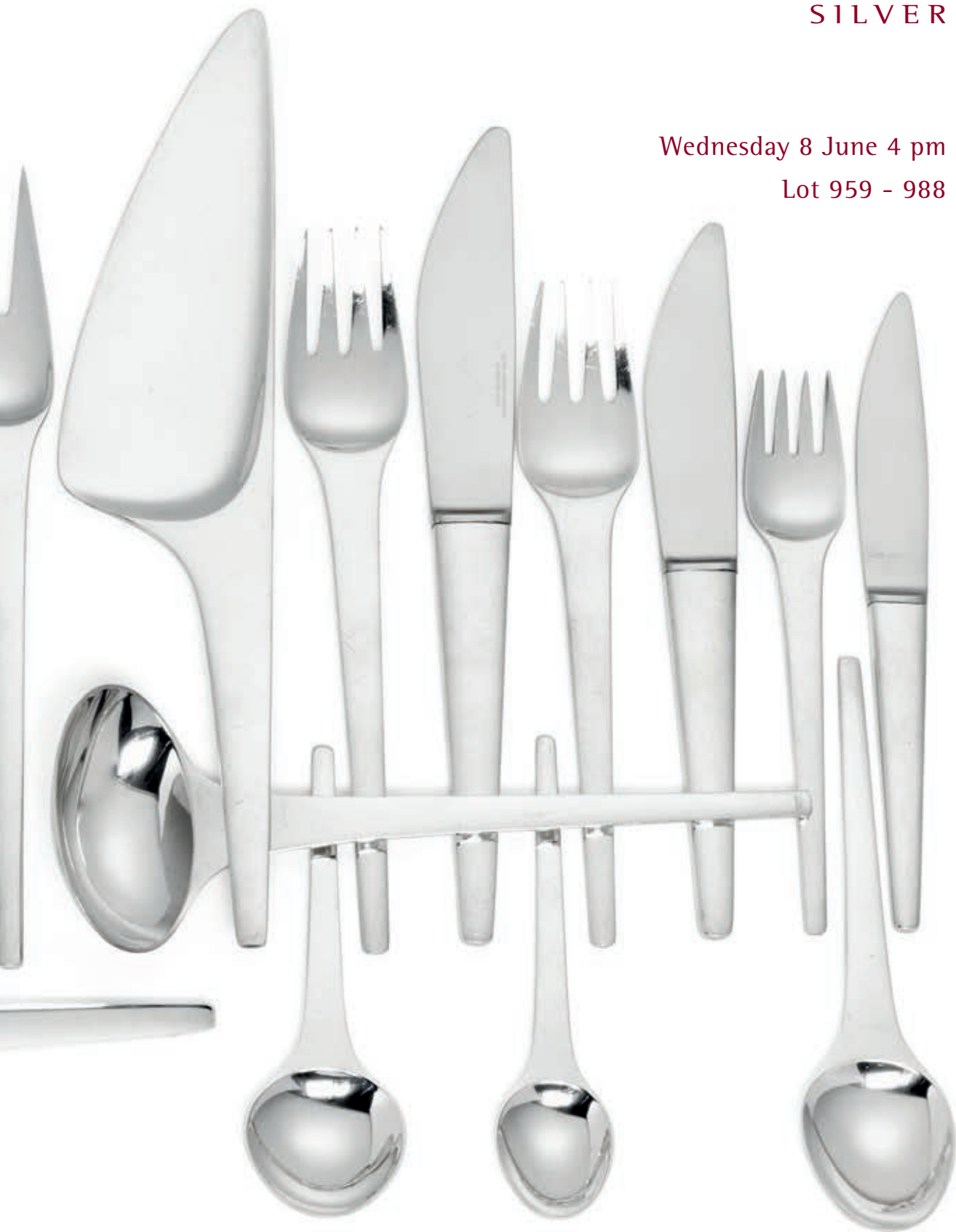


Director of sales
Kasper Nielsen
+45 8818 1121
kn@bruun-rasmussen.dk

SILVER

Wednesday 8 June 4 pm

Lot 959 - 988



Lot 980



959

959

HARALD NIELSEN

b. Baarse 1892, d. 1977

"Pyramid". Sterling silver cutlery. Georg Jensen 1929-1934, 1933-1944, 1945-1951 and after 1945. Designed 1926.

Weight excluding pieces with steel 2500 gr. (70)

Comprising:

12 dinner knives with short handle
 13 dinner forks
 12 dinner spoons
 6 luncheon knives with short handle
 7 luncheon forks
 2 dessert spoons
 8 coffee spoons
 1 marmelade spoon
 1 medium serving spoon

1 large serving spoon
 1 fried egg server
 1 small salad fork with steel
 1 pie knife
 1 sauce ladle with steel
 1 sauce ladle
 1 steak fork
 1 bottle opener with short handle

DKK 35,000 / € 4,700



960

HARALD NIELSEN

b. Baarse 1892, d. 1977

An oval sterling silver bowl with two stylized handles.
Georg Jensen after 1945. Design no. 363. Designed
1931. Weight 1277 gr. H. 10,5 cm. L. 40 cm.

DKK 60,000 / € 8,050



960



961

961
KAY BOJESEN

b. København 1886, d. Gentofte 1958

"Grand Prix". Sterling silver cutlery. Made and stamped by Kay Bojesen. Designed 1938. Weight excluding pieces with steel 3655 gr. Engraved monogram on reverse of all pieces. (98)

<i>Comprising:</i>	<i>8 tea spoons</i>
<i>8 fish knives</i>	<i>8 coffee spoons</i>
<i>8 fish forks</i>	<i>1 grape fruit spoon</i>
<i>8 dinner knives</i>	<i>2 marmelade spoons</i>
<i>8 dinner forks</i>	<i>2 sauce ladles/serving spoons with oval bowl</i>
<i>8 dinner spoons</i>	<i>1 pie server</i>
<i>8 luncheon knives</i>	<i>2 cold cuts forks</i>
<i>8 luncheon forks</i>	<i>1 steak fork</i>
<i>8 dessert spoons</i>	<i>1 cream ladle</i>
<i>8 pastry forks</i>	

DKK 40,000-50,000 / € 5,400-6,700



962

962^{CD} ©

KARL GUSTAV HANSEN

b. Odense 1925

A sterling silver water pitcher with ivory handle. Made and stamped by Hans Hansen anno 1965. Designed 1965. Design no. 454. Weight 490 gr. H. 16,5 cm.

Literature: Jörg Schwandt: "Karl Gustav Hansen Sølv/Silber 1930-1994", Museet på Koldinghus, model ill. p. 186.

CITES-certificate valid within the European Union included.

DKK 20,000-30,000 / € 2,700-4,050



963

963^{CD} ©

KARL GUSTAV HANSEN

b. Odense 1925

A sterling silver teapot with ivory handle. Made and stamped by Hans Hansen anno 1967. Design no. 454. Weight 898 gr. H. incl. handle 19,5 cm.

Literature: Jörg Schwandt: "Karl Gustav Hansen Sølv/Silber 1930-1994", Museet på Koldinghus, model ill. p. 185.

CITES-certificate valid within the European Union included. DKK 30,000 / € 4,000



964

SIGVARD BERNADOTTE

b. 1907, d. 2002

"Bernadotte". Sterling silver cutlery. Georg Jensen after 1945. Designed 1939. Weight excluding pieces with steel 2444 gr. (73)

Comprising:

12 dinner knives with long handle

12 dinner forks

4 dinner spoons

12 luncheon knives with long handle

12 luncheon forks

8 dessert spoons

6 coffee spoons

4 tea spoons

1 potato spoon

1 short cold cuts fork

1 bottle opener with long handle

DKK 30,000 / € 4,050



965



965

SIGVARD BERNADOTTE

b. 1907, d. 2002

"Bernadotte". A sterling silver dish with cover. Georg Jensen 1945-1977. Design no. 958. Designed 1949. Weight 761 gr. H. 10 cm. L. incl. handles 23,6 cm.

Literature: Janet Drucker: "Georg Jensen - A Tradition of Splendid Silver", ill. p. 204. DKK 20,000 / € 2,700

966

966

SIGVARD BERNADOTTE

b. 1907, d. 2002

A pair of rare three-branch sterling silver candelabra. Georg Jensen 1945-1951. Design no. 855 C. Total weight 2010 gr. H. 37 cm. (2)

DKK 80,000 / € 11,000





967

967
GEORG JENSEN

b. Rådvaad 1866, d. Hellerup 1935

A large, hammered sterling silver five-arm candelabrum with leaves, grapes and spiral fluted stem. Circular foot. Georg Jensen after 1977. Design no. 383 A. With date letter K11=2008. Weight 3140 gr. Designed 1921. H. 26,8 cm. Diam. 30,5 cm.

The model exhibited at the Museum of Modern Art in New York.

Literature: David A. Taylor & Jason W. Laskey: "Georg Jensen Holloware. The Silver Fund Collection", ill. p. 163.

DKK 150,000 / € 20,000



968

JOHAN ROHDE

b. Randers 1856, d. Hellerup 1935

“Acorn”. Sterling silver cutlery. Georg Jensen 1945-1951 and after 1945. Designed 1915. Weight excluding pieces with steel 2309 gr. (85)

Comprising:

8 dinner knives with long handle

8 dinner forks

8 luncheon knives with long handle

8 luncheon forks

8 dessert spoons

12 coffee spoons

8 large tea spoons

8 pastry forks

4 short cold cuts forks

1 bouillon spoon

1 server with steel

1 sugar tongs

2 butter knives

2 herring forks

2 potato spoons

1 vegetable spoon

1 steak fork

2 salt spoons

DKK 20,000 / € 2,700



969
GEORG JENSEN

b. Rådvaad 1866, d. Hellerup 1935

A large, hammered sterling silver tazza with grapes.
 Circular foot, coiled stem. Georg Jensen 1945-1977.
 Design no. 264 A. Weight 1330 gr. H. 27,4 cm.

DKK 60,000-70,000 / € 8,050-9,400

969

970
GEORG JENSEN

b. Rådvaad 1866, d. Hellerup 1935

A circular, hammered silver wine coaster with grapes and leaves. Inside with silver liner. Georg Jensen anno 1922. Design no. 289 B. Weight 460 gr. Designed 1918. H. 6,7 cm. Diam. 15 cm.

Literature: David A. Taylor & Jason W. Laskey: "Georg Jensen Holloware. The Silver Fund Collection", ill. p. 128.

DKK 40,000-50,000 / € 5,350-6,700



970



971

JOHAN ROHDE

b. Randers 1856, d. Hellerup 1935

"Acorn". Sterling silver cutlery. Georg Jensen after 1945. Weight excluding pieces with steel 3197 gr. Designed 1915. (101)

Comprising:

12 fish knives

12 dinner knives with long handle

12 dinner forks

12 luncheon knives with long handle

12 luncheon forks

12 dessert spoons

12 pastry forks

12 coffee spoons

2 medium serving spoons

1 sauce ladle

1 steak fork

1 salt spoon

DKK 30,000-40,000 / € 4,000-5,350

972

THORVALD BINDESBØLL

b. Copenhagen 1846, d. s.p. 1908

A large, oval silver bowl on four feet. Stylized ornamentation and gilded inside. Stamped monogram TB. Made and stamped by A. Michelsen anno 1905. Weight 1279 gr. H. max. 20 cm. W. 21,7 cm. L. 31,3 cm. *DKK 100,000 / € 13,500*



972



973

SIGVARD BERNADOTTE

b. 1907, d. 2002

"Berndotte". Sterling silver cutlery. Georg Jensen after 1945. Designed 1939. Weight excluding pieces with steel 3050 gr. (84)

Comprising:

10 dinner knives with long handle

12 dinner forks

8 dinner spoons

2 luncheon knives with long handle

12 dessert spoons

12 pastry forks

12 coffee spoons

3 long cold cuts forks

2 short cold cuts forks

1 herring fork

1 marmelade spoon

1 sugar tongs

2 servers with steel

1 pie knife

1 serving spoon with steel

1 short bottle opener

1 sauce ladles

2 salt spoons

DKK 20,000-25,000 / € 2,700-3,350



974

974
HOLGER KYSTER

b. 1872, d. 1944

A circular silver dish with stylized ornamentation. Made and stamped by Holger Kyster. Weight 1036 gr. H. 5,5 cm. Diam. 28 cm.

The motif of the dish originates from a ceramics dish by Thorvald Bindsbøll.

Literature: Bodil Busk Laursen [ed.]: "Thorvald Bindsbøll - A Danish Pioneer", similar variant of glazed ceramics ill. p. 73. DKK 50,000 / € 6,700



975

975
KAY BOJESEN

b. København 1886, d. Gentofte 1958

"Grand Prix". Sterling silver cutlery. Made and stamped by Kay Bojesen. Designed 1938. Weight excluding pieces with steel 3229 gr. (87)

Comprising:

- | | | |
|--------------------------|---------------------------------------|-----------------------------|
| <i>12 dinner spoons</i> | <i>10 grapefruit spoons</i> | |
| <i>12 dinner forks</i> | <i>1 small grapefruit spoon</i> | |
| <i>12 luncheon forks</i> | <i>1 serving spoon</i> | |
| <i>12 dessert spoons</i> | <i>1 serving spoon with oval bowl</i> | |
| <i>12 pastry forks</i> | <i>1 steak fork</i> | |
| <i>12 coffee spoons</i> | <i>1 server</i> | <i>DKK 25,000 / € 3,350</i> |



976

976

THORVALD BINDESBØLL

b. Copenhagen 1846, d. s.p. 1908

A sterling silver bowl with stylized ornamentation. Made and stamped by A. Michelsen anno 1899. Weight 271 gr. H. 9 cm. Diam. 13,3 cm. *DKK 25,000 / € 3,350*



977

977

GEORG JENSEN

b. Rådved 1866, d. Hellerup 1935

A large, hammered sterling silver ladle with carved ebony handle. Georg Jensen after 1945. Design no. 66. Weight 370 gr. L. 43,5 cm.

Literature: David A. Taylor, Jason W. Laskey: "Georg Jensen Holloware - The Silver Fund Collection", ill. p. 344.

DKK 10,000 / € 1,350

978

HARALD NIELSEN

b. Baarse 1892, d. 1977

"Pyramid". Sterling silver cutlery. Georg Jensen 1945-1951 and after 1945. Designed 1926. Weight excluding pieces with steel 4763 gr. (131)

Comprising:

12 dinner knives with long handle

12 dinner forks

12 dinner spoons

12 dessert spoons

12 bouillon spoons

12 pastry forks

6 tea spoons

12 coffee spoons

7 fruit knives

3 butter knives

1 tea strainer

1 large serving spoon

1 potato spoon

1 soup ladle

1 pie server

2 herring forks

2 medium cold cuts forks

1 short cold cuts fork

1 long cold cuts fork

1 patty shell server

1 mayonnaise ladle

1 sauce ladle

1 steak fork

1 canapé server

1 marmelade spoon

1 cream ladle

1 large salad set with steel

4 salt cellars with blue enamel

4 salt spoons

1 cray fish knife

1 child's pusher

1 mustard spoon

DKK 75,000 / € 10,000





978

979

JOHAN ROHDE

b. Randers 1856, d. Hellerup 1935

A set of eight hammered sterling silver plates. Georg Jensen 1945-1951. Design no. 587 C. Total weight 5277 gr. Diam. 28 cm. (8) *DKK 30,000 / € 4,000*



979



980
HENNING KOPPEL

b. Copenhagen 1918, d. s.p. 1981

"Caravel". Sterling silver cutlery. Georg Jensen after 1945. Weight excluding pieces with steel 4363 gr. Designed 1957. (113)
Sold at the request by the State Prosecutor for Serious Economic and International Crime, Denmark.

Comprising:

- | | |
|----------------------------|--------------------------|
| <i>4 lobster forks</i> | <i>12 coffee spoons</i> |
| <i>12 dinner knives</i> | <i>1 pie server</i> |
| <i>12 dinner forks</i> | <i>1 marmelade spoon</i> |
| <i>2 dinner spoons</i> | <i>2 fruit knives</i> |
| <i>12 luncheon knives</i> | <i>2 sauce ladles</i> |
| <i>12 luncheon forks</i> | <i>1 bottle opener</i> |
| <i>12 dessert spoons</i> | <i>2 salad sets</i> |
| <i>12 dessert forks</i> | <i>2 steak forks</i> |
| <i>12 large tea spoons</i> | |

DKK 60,000-75,000 / € 8,050-10,000



981

981

HARALD NIELSEN

b. Baarse 1892, d. 1977

"Old Danish". Sterling silver cutlery. Georg Jensen after 1945.

Designed 1947. Weight excluding pieces with steel 4140 gr. (106)

Comprising:

12 fish knives

12 dinner knives with short handle

12 large dinner forks

12 luncheon knives with short handle

12 luncheon forks

12 dessert spoons

12 fruit knives

12 tea spoons

2 small serving spoons

2 potato spoons

2 servers

2 sauce ladles

2 steak forks

DKK 20,000-30,000 / € 2,700-4,000

982

KAY BOJESEN

b. København 1886, d. Gentofte 1958

"Grand Prix". Sterling silver cutlery. Made and stamped by Kay Bojesen. Designed 1938. Weight excluding pieces with steel 2105 gr. (56)

Comprising:

10 dinner knives

6 dinner forks

6 dinner spoons

1 luncheon knife

6 luncheon forks

1 fork L. 18,2 cm.

1 fork L. 17,8 cm.

1 fork L. 16,9 cm.

11 dessert spoons

7 tea spoons

6 mocha spoons

DKK 20,000-25,000 / € 2,700-3,350



982

983

OLAF STÆHR-NIELSEN

b. Frederiksberg 1896, d. 1969

A sterling silver mocha set. Comprising a mocha pot, a creamer, a sugar bowl and a circular tray. Finial, handles and tray of mahogany. Made and stamped by A. Michelsen. Date letters M9=1963 and F9=1956. Total weight including mahogany 1100 gr. H. 4,6. - 15,5 cm. (4)

DKK 20,000 / € 2,700



983

984

GEORG JENSEN

b. Rådvald 1866, d. Hellerup 1935

An oval hammered silver bowl. Openwork stem with leaves.

Georg Jensen anno 1919. Weight 481 gr. H. 7,6 cm. W. 14 cm.

L. 19,5 cm.

DKK 20,000 / € 2,700



984

985

SIGVARD BERNADOTTE

b. 1907, d. 2002

"Bernadotte". Sterling silver cutlery. Georg Jensen after 1945. Designed 1939. Weight excluding pieces with steel 5424 gr. (186)

Comprising:

12 soup spoons

18 dinner knives with long handle

18 dinner forks

17 luncheon knives with long handle

17 luncheon forks

18 dessert spoons

18 fruit knives

1 small fruit knife

18 tea spoons

10 pastry forks

6 egg spoons

6 medium cold cuts forks

6 short cold cuts forks

2 cream ladles

1 canapé server

1 small server with steel

2 potato spoons

1 cheese plane

1 tomato knife

1 fried egg server

1 large pie server with steel

1 pie knife

1 small serving spoon

1 compote spoon

2 sugar spoons

1 fish serving set

2 sauce ladles

1 soup ladle

2 steak forks

DKK 70,000 / € 9,400



985



986

986

SIGVARD BERNADOTTE

b. 1907, d. 2002

"Bernadotte". Sterling silver cutlery. Georg Jensen 1933-1944, 1945-1951 and after 1945. Weight excluding pieces with steel 5695 gr. Designed 1939. (142)

Comprising:

- | | |
|-----------------------------------|-----------------------|
| 13 fish knives | 14 fruit knives |
| 13 fish forks | 16 fruit forks |
| 12 dinner knives with long handle | 14 ice cream spoons |
| 18 dinner forks | 2 potato spoons |
| 12 dessert spoons | 2 sauce ladles |
| 10 large tea spoons L. 16 cm | 1 long cold cuts fork |
| 2 large tea spoons L. 15 cm | 1 steak fork |
| 12 tea spoons | DKK 60,000 / € 8,050 |

987

HARALD NIELSEN

b. Baarse 1892, d. 1977

A large, hammered sterling silver bowl with circular base. Georg Jensen 1945-1977. Design no. 878. Weight 1435 gr. H. 14,5 cm. Diam. 27,5 cm.

DKK 40,000 / € 5,400



987



988

988

JOHAN ROHDE

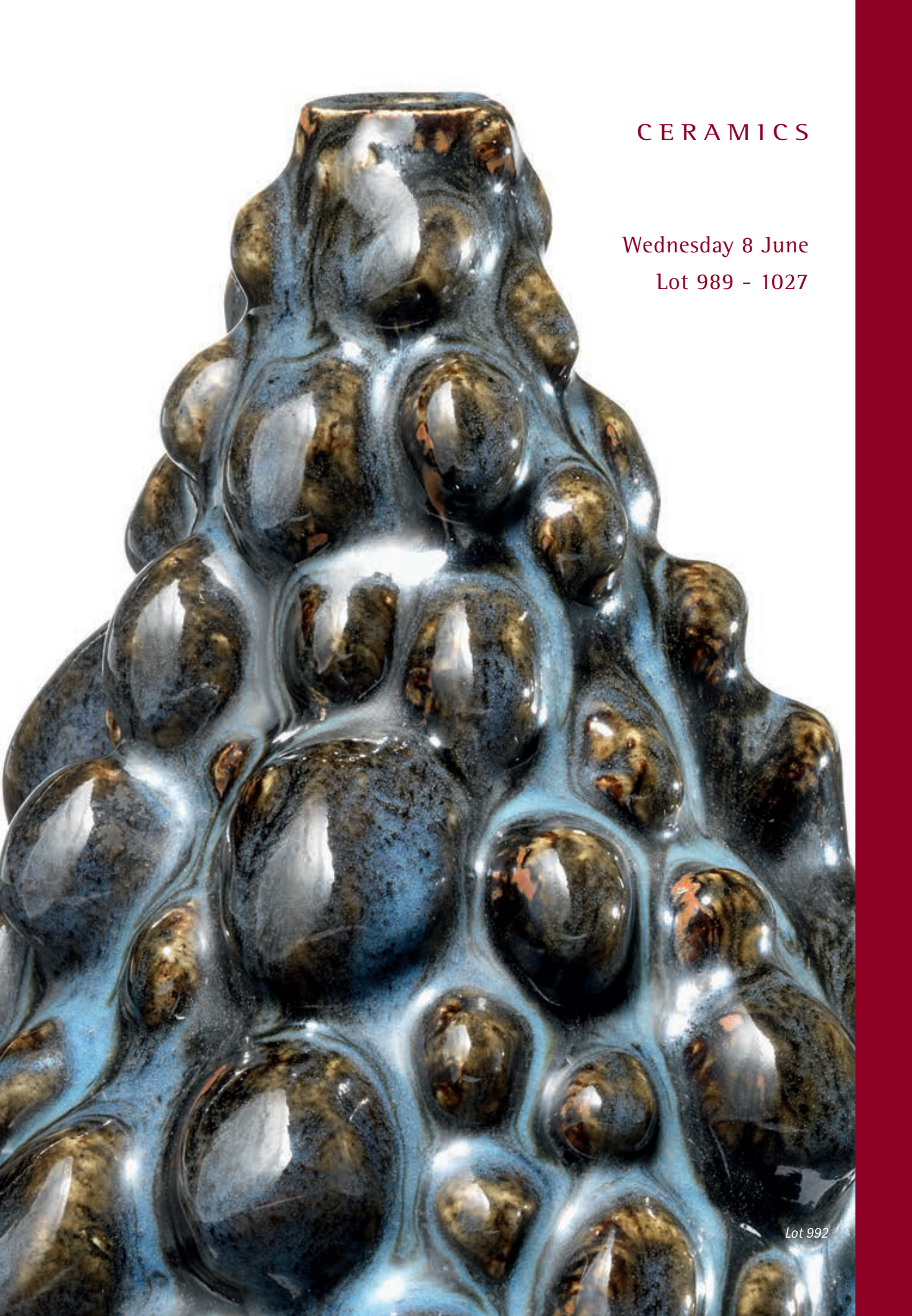
b. Randers 1856, d. Hellerup 1935

"Acorn". Sterling silver cutlery. Georg Jensen 1945.

Weight excluding pieces with steel 3367 gr. Designed 1915. (111)

Comprising:

- | | |
|--|-------------------------------|
| <i>12 dinner knives with long handle</i> | <i>1 pie knife</i> |
| <i>12 dinner forks</i> | <i>1 sugar spoon</i> |
| <i>11 dinner spoons</i> | <i>1 sauce ladle</i> |
| <i>12 luncheon knives long handle</i> | <i>3 long cold cuts forks</i> |
| <i>12 luncheon forks</i> | <i>1 nut cracker</i> |
| <i>12 dessert spoons</i> | <i>1 steak fork</i> |
| <i>6 tea spoons</i> | <i>1 potato spoon</i> |
| <i>12 coffee spoons</i> | <i>1 server with steel</i> |
| <i>12 pastry forks</i> | <i>DKK 30,000 / € 4,000</i> |



CERAMICS

Wednesday 8 June
Lot 989 - 1027

Lot 992

989

AXEL SALTO

b. Copenhagen 1889, d. Frederiksberg 1961

A large stoneware bowl, outside modelled in fluted style. Decorated on the outside with sung glaze and on the inside with celadon glaze. Signed Salto, 20669. Royal Copenhagen. Made 1969-1974. H. 14,5 cm. Diam. 36 cm.

DKK 30,000 / € 4,000



989

990

AXEL SALTO

b. Copenhagen 1889, d. Frederiksberg 1961

A stoneware vase modelled in sprouting style. Decorated with solfatara glaze. Signed Salto, 21452. Royal Copenhagen. Made 1958. H. 21,5 cm.

DKK 30,000 / € 4,000



990

991

AXEL SALTO

b. Copenhagen 1889, d. Frederiksberg 1961

A fruit-shaped stoneware vase modelled with narrow mouth. Decorated with sung glaze with blue elements. Signed Salto, 20818. Royal Copenhagen. Made 1969-1974. H. 22 cm.

DKK 60,000-80,000 / € 8,050-10,500



991

992

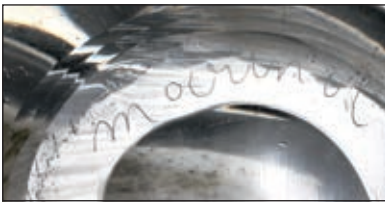
AXEL SALTO

b. Copenhagen 1889, d. Frederiksberg 1961

A stoneware vase modelled in budded style with narrow mouth. Decorated with Butterfly wing glaze. Signed Salto, 21471. Royal Copenhagen. Made 1965. H. 21,5 cm. *DKK 60,000 / € 8,050*



992



993 ^{CD}

MAURICE MARINOT

b. Troyes, Frankrig 1882, d. 1960

A glass bottle and stopper. Internal decoration in grey green colours. Made circa 1930. Engraved signature Marinot. Original paper label numbered 1232. H. 17 cm.

Provenance: Collection of Director Christian Christensen.

Bruun Rasmussen Auctioneers 1997, sale. no. 630, lot no. 839, Christian Christensens collection of Art Nouveau and Art Deco.

Christian Vilhelm Christensen was managing director of Royal Copenhagen from 1931–1959. In that period he united artistic development with a viable economic foundation. He had a rare international and artistic perspective, that he naturally had acquired during his stay in Paris from 1908 until 1930. During those years he was employed 1908–1914 by Géo Rouard in Magasin "A la Paix" on Avenue de l'Opéra no. 30. From 1914–1918 as the artistic leader and mercantile director. In the period 1918–1930 he was employed as mercantile director of R. Laliqué & Cie. and here among other responsible for the the sale and presentation of of the finest in jewellery.

Christian Christensen was a rare Danish participant in the inner circle of people and artists that defined Art Nouveau and Art Deco.

The paper label indicates that the present piece could have been a "going away" present when Christian Christensen left Paris in 1930.

DKK 80,000-100,000 / € 11,000-13,500



993



994

994

TIMO SARPANEVA

b. Helsinki 1926, d. s.p. 2006

"Kukinto". A large vase of brown/grey glass with polychrome bands. Engraved signature Sarpaneva, Venini 95. Made by Venini, Murano, Italy. H. 40,5 cm.

DKK 12,000-15,000 / € 1,600-2,000

995 ^{CD}

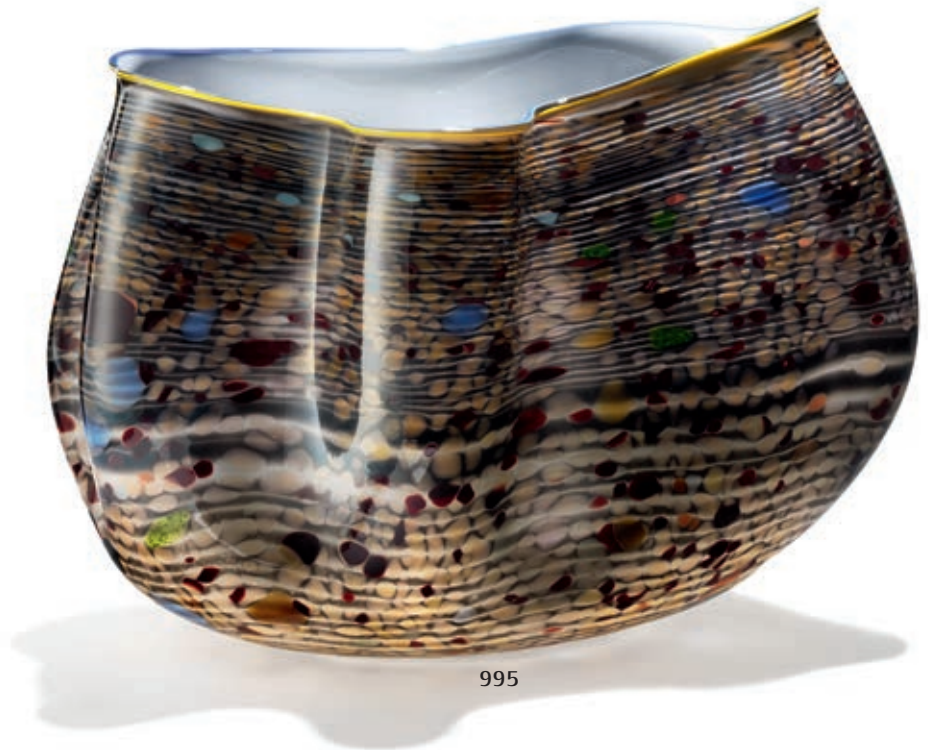
DALE CHIHULY

b. Tacoma, Washington 1941

"Macchia". A polychrome glass bowl. Wavy shape, outside of brown glass with elements of yellow, blue, green and red glass. Inside of white glass. Signed Chihuly 1982. Unique. H. 20 cm. L. ca. 27 cm.

Provenance: Bought by present owner in 1983 at Holmegaard Glasværk's Museum of Unique Glass.

DKK 25,000-30,000 / € 3,350-4,050



995



996

996

**BIRGITTA CARLSSON
AND OVE THORSEN**

A large, rare "Merletto" vase of clear glass casing white "Lattimo" glass in a lace pattern. Made by Venini, Murano, Italy 1981. Engraved signature Venini, Italia 81 and artist's monogram. 1980s Venini label. H. 38 cm.

DKK 15,000-20,000 / € 2,000-2,700

997 ^{CD}

BIRGER KAIPAINEN

b. Björneborg 1915, d. 1988

An oval stoneware dish with motifs of flowers and berries in relief. Decorated with black and yellow glaze and lustre glaze. Signed Kaipainen, Arabia. Made by Arabia, Finland ca. 1960-1970s. Unique. H. 5,5 cm. W. 48,5 cm. L. 62,5 cm.

With metal wire for wall mounting

DKK 30,000-40,000 / € 4,000-5,350



997

998

ALVAR AALTO

b. Kuortane 1898, d. 1976

A large, mouth blown clear glass vase. Signed Alvar Aalto, 2/1989. Made by Iittala, Finland 1989. H. 30,5 cm. *DKK 15,000 / € 2,000*



999

ALVAR AALTO

b. Kuortane 1898, d. 1976

A very large, mouth blown clear glass vase. Signed Alvar Aalto 53/1996. Made by Iittala, Finland 1996. H. 60 cm. W. 32,3 cm.

DKK 15,000-20,000 / € 2,000-2,700



999



1000

1000 ^{CD}

ALEV EBÜZZIYA SIESBYE

b. Istanbul 1938

A circular stoneware bowl decorated with light turquoise glaze. Signed Alev '81. Unique. H. 14,5 cm. Diam. 28,5 cm.

DKK 30,000-40,000 / € 4,050-5,400

1001 ^{CD}

ALEV EBÜZZIYA SIESBYE

b. Istanbul 1938

A circular stoneware bowl decorated with rust-red glaze. Upper rim decorated with ochre glaze. Signed Alev '79. Unique. H. 11 cm. Diam. 21,3 cm.

DKK 30,000-40,000 / € 4,050-5,400



1001



1002

1002 ^{CD}

ALEV EBÜZZIYA SIESBYE

b. Istanbul 1938

A circular stoneware bowl decorated with ochre glaze. Upper rim decorated with pale, orange glaze. Signed Alev '74. Unique. H. 11,4 cm. Diam. 22 cm.

DKK 20,000-30,000 / € 2,700-4,050

1003 ^{CD}

ALEV EBÜZZIYA SIESBYE

b. Istanbul 1938

A circular stoneware bowl, decorated with turquoise blue glaze, inside with turquoise green elements. Faint signature. Unique. H. 13,3 cm. Diam. 26,5 - 27 cm.

Provenance: Acquired by present owner directly from Alev Ebüzziya Siesbye in the late 1980s.

DKK 40,000-50,000 / € 5,400-6,700



1003



1004

1004 ^{CD}

ALEV EBÜZZIYA SIESBYE

b. Istanbul 1938

A small, circular stoneware bowl decorated with graded, light rose glaze. Signed Alev '84, 3K. Unique. H. 9,4 cm. Diam. 14,5 cm.

Provenance: The collection of Hans and Bente Weinberger.

DKK 15,000 / € 2,000



1005

1005 ^{CD}

ALEV EBÜZZIYA SIESBYE

b. Istanbul 1938

A small, circular stoneware bowl, decorated with olive green glaze, upper rim with grey glaze. Signed Alev '90. Unique. H. 10 cm. Diam. 13,5 cm.

Provenance: The collection of Hans and Bente Weinberger.

DKK 12,000 / € 1,600



1006

1006 ^{CD}

ALEV EBÜZZIYA SIESBYE

b. Istanbul 1938

A circular stoneware bowl of partly unglazed stoneware. Outside decorated with scratched patterns decorated with matt white glaze. Inside decorated with transparent glaze. Signed Alev, Royal Copenhagen. Unique. H. 11 cm. Diam. 19 cm.

Provenance: The collection of Hans and Bente Weinberger.

DKK 12,000 / € 1,600

1007 ^{CD}

ALEV EBÜZZIYA SIESBYE

b. Istanbul 1938

A sculptural stoneware object, decorated with dark brown glaze. Faint signature Alev. Made Royal Copenhagen 1965. Unique. H. 8,6 cm. Diam. ca. 9 cm.

Provenance: The collection of Hans and Bente Weinberger.

Exhibited: May 31st - August 4th 2002, Design Museum Danmark "Alev Ebüzziya Siesbye - A Ceramic Universe 1964-2002".

DKK 6,000 / € 805



1007



1008

1008 ^{CD}

ALEV EBÜZZIYA SIESBYE

b. Istanbul 1938

A large, circular stoneware bowl. Partly decorated with scratched formations with matt reddish brown glaze. Inside decorated with ochre glaze. Signed Alev '72. Unique. H. ca. 22 cm. Diam. 38 cm.

Provenance: The collection of Hans and Bente Weinberger.

Literature: Exhibition catalogue: "Alev Ebüzziya Siesbye - A Ceramic Universe 1964-2002", Design Museum Danmark. ill. catalogue p. 14. DKK 25,000-30,000 / € 3,350-4,050



1009

1009 ^{CD}

ALEV EBÜZZIYA SIESBYE

b. Istanbul 1938

A large, circular stoneware bowl. Partly decorated with scratched formations with matt black glaze. Inside decorated with transparent glaze with brown elements. Signed Alev '76, B21. Unique. H. ca. 23,3 cm. Diam. ca. 35 cm.

Provenance: The collection of Hans and Bente Weinberger.

DKK 25,000-30,000 / € 3,350-4,050



1010
JUST ANDERSEN

b. Godhavn, Greenland 1884, d. Glostrup 1943

A pair of patinated "disko" metal lamps. Stamped monogram Just A., Danmark. Design no. 2256. H. excl. socket 32 cm. H. incl. shade holder 52,5/53 cm. (2) *DKK 30,000 / € 4,000*

1011
ARNE BANG

b. Frederiksberg 1901, d. Fensmark 1983

Four stoneware vases modelled with fluted pattern, including a pair of vases and a bowl. Decorated with light grey glaze. Signed monogram, resp. 139, 37, 3 and 42. H. 3,5 - 16,5 cm. (5)

DKK 30,000 / € 4,050

1012^{cd}
PER WEISS

b. Melby 1953

A very large ceramics floor vase decorated with windings in relief, with dark greyish blue glaze and white glaze with blue elements. Stamped monogram. Unique. H. 115 cm. Diam. 75 cm.

DKK 50,000 / € 6,700



1011



1012



1013

1013 * CD

BODE WILLUMSEN

b. København 1895, d. 1987

A colossal stoneware vase modelled in four-sided shape with two handles in the shape of fabulous animals and figures. Decorated with green and ochre glaze with blue elements. Signed monogram, 2-11 1934. Royal Copenhagen. Unique. H. 73 cm.

DKK 10,000-12,000 / € 1,350-1,600

1014

JUST ANDERSEN

b. Godhavn, Greenland 1884, d. Glostrup 1943

A pair of circular, patinated "disko" metal vases with fluted pattern. Stamped monogram Just A., one stamped Danmark. Design no. 1940. H. 24,5 cm. (2)

DKK 30,000 / € 4,050



1014

1015

AXEL SALTO

b. Copenhagen 1889, d. Frederiksberg 1961

A circular stoneware bowl. Outside modelled in fluted style. Decorated with sung glaze. Signed Salto. Royal Copenhagen. H. 12,8 cm. Diam. 29,5 cm.

DKK 20,000 / € 2,700



1015

1016

ARNE BANG

b. Frederiksberg 1901, d. Fensmark 1983

Three stoneware vases modelled in geometric shape with fluted patterns. Decorated with resp. grey, brown and blue glaze. Signed monogram resp. 79, 92 and 78. H. 13,5. - 17,7 cm. (3)

DKK 30,000-40,000 / € 4,050-5,400



1016



1017

1017
AXEL SALTO

b. Copenhagen 1889, d. Frederiksberg 1961

A circular stoneware bowl, outside modelled in fluted style. Decorated with sung glaze. Signed Salto, 20568. Royal Copenhagen. Made 1969-1974. H. 15 cm. Diam. 25,5 cm. *DKK 15,000-20,000 / € 2,000-2,700*



1018

1018
AXEL SALTO

b. Copenhagen 1889, d. Frederiksberg 1961

A cylindrical stoneware vase modelled in budded style. Decorated with solfatara glaze. Signed Salto. Royal Copenhagen. H. 16,3 cm. *DKK 15,000 / € 2,000*

1019

AXEL SALTO

b. Copenhagen 1889, d. Frederiksberg 1961

A circular stoneware bowl, outside modelled in fluted style. Decorated on the inside with solfatara glaze and on the outside with celadon glaze. Signed Salto, 20726. Royal Copenhagen. H. 7,3 cm. Diam. 16,5 cm.

DKK 20,000 / € 2,700



1019

1020

AXEL SALTO

b. Copenhagen 1889, d. Frederiksberg 1961

A circular stoneware bowl, outside modelled in fluted style. Decorated with sung glaze with blue elements. Signed Salto, 20675. Royal Copenhagen. Manufactured 1961. H. 12,3 cm. Diam. ca. 30,2 cm.

DKK 25,000 / € 3,350



1020



1021

1021
THORVALD BINDEBØLL

b. Copenhagen 1846, d. s.p. 1908

A large earthenware vase, decorated with scratched patterns and transparent, brown glaze. Signed monogram, 91, Eifrig, Valby. Unique. H. 43 cm.

DKK 60,000-80,000 / € 8,050-11,000

1022

AXEL SALTO

b. Copenhagen 1889, d. Frederiksberg 1961

A stoneware vase, partly modelled in budded style and with narrow mouth. Decorated with sung glaze. Signed Salto, 21441. Royal Copenhagen. Made 1961. H. 20,5 cm. *DKK 30,000 / € 4,050*

1023

AXEL SALTO

b. Copenhagen 1889, d. Frederiksberg 1961

A stoneware vase modelled in sprouting style. Decorated with sung glaze. Signed Salto, 20701. Made 1968. Royal Copenhagen. H. 18,8 cm.

DKK 20,000-30,000 / € 2,700-4,000



1023



1022



1024

1024

JUST ANDERSEN

b. Godhavn, Greenland 1884, d. Glostrup 1943

An oval shaped patinated bronze vase. The upper part cast with two transverse bars. Stamped monogram Just A., Denmark. Design no. B 1688. H. 20,5 cm. W. 19,5 cm. D. 9,3 cm. *DKK 25,000 / € 3,350*

1025 ^{CD}

ERIK MAGNUSSEN

b. 1884, d. 1960

C. F. LUDVIGSEN

b. 1883, d. 1963

A porcelain flacon decorated with green crystal glaze with greyish brown elements. Signed monogram, 696. Porcelain mass signed 913 H. Royal Copenhagen. Made circa 1918-1919. 14 carat gold mounting and stopper. Stamped monogram for Erik Magnussen, 585. Total gold weight 10 gr. Stopper with fresh water pearl finial. Unique. H. 10,8 cm.

DKK 12,000 / € 1,600



1025



1026

1026 ^{CD}

KRESTEN BLOCH

b. Næstved 1912, d. København 1970

KNUD ANDERSEN

b. Næstved 1912, d. København 1970, b. Nørresundby 1945

A stoneware lid jar decorated with oxblood glaze. Signed monogram. Royal Copenhagen. Lid and stand of patinated and partly gilded bronze. Stamped monogram KA for Knud Andersen. Royal Copenhagen. Unique. H. incl. stand and lid 35 cm.

DKK 60,000 / € 8,050



1027

1027
WILHELM KÅGE

b. Stockholm 1889, d. 1960

"Argenta". A large circular stoneware dish. Decorated with dark red glaze with silver glazed fish motifs. Signed Kåge, 1035. Made and signed by Gustavsberg, Sweden. Unique. H. 7,3 cm. Diam. 45,5 cm.

DKK 20,000-25,000 / € 2,700-3,350

FURNITURE, LAMPS
AND CARPETS

Thursday 9 June 4 pm
Lot 1028 - 1183



Lot 1113



1028

PEDER MOOS

b. Nybøl 1906, d. 1991

Serving trolley with nut wood frame mounted on castors with brass fittings. Top and underlying shelf with rough plate glass, corners with circular nut wood inlays. Signed Moos 1948. Designed 1942. This example made 1948 by cabinetmaker Peder Moos. H. 57 cm. L. 71,5 cm. W. 41,5 cm. *Model presented at The Copenhagen Cabinetmakers' Guild Exhibition at Designmuseum Danmark, 1942.*

Literature: Grete Jalk [ed.]: "40 Years of Danish Furniture Design", vol. 2, p. 177. DKK 30,000-40,000 / € 4,050-5,400



1028



1029
PEDER MOOS

b. Nybøl 1906, d. 1991

"A Little of Everything". Wall lamp of solid nut wood with boxwood inlays. Circular wall bracket with swivel for two-piece adjustable arm mounted with pleated paper shade. Signed Moos 1948. This example made 1948 by cabinetmaker Peder Moos. Max. L. 84 cm.

Literature: Grete Jalk [ed.]: "40 Years of Danish Furniture Design", vol. 3, p. 62-63. DKK 40,000-60,000 / € 5,400-8,050



1029



1030 recto



1030 verso

1030

**AAPPO HÄRKÖNEN (KAINO
LEMMIKKI HÄRKÖNEN)**

finsk tekstildesigner, 20. århs anden del

"Trilli". Rare, reversible handwoven wool and goat's hair carpet with geometrical pattern in resp. orange and black on base in the opposite colour. This example made approx. 1960s by Mattokutomo Oy, Finland. 236 x 156 cm.

Literature: Kaunis Koti, 6/1960, similar carpet ill.

DKK 25,000 / € 3,350

1031

JØRGEN BO

b. 1919, d. 1999

"Hebe lamp". A pair of pendants. White painted metal shades and frosted glass cylinders with brass mounting. Type no. 16586. Designed 1967. These examples manufactured 1960s by Louis Poulsen. Diam. 60 cm. (2)

DKK 15,000-20,000 / € 2,000-2,700

1032 ©

**HELGE
VESTERGAARD JENSEN**

b. 1917, d. 1987

A pair of Brazilian rosewood easy chairs. Seat, sides and back upholstered with reddish brown leather. Designed 1960. These examples made approx. 1960 by cabinetmaker Peter Pedersen. (2)

Model presented at The Copenhagen Cabinetmakers' Guild Exhibition at Designmuseum Danmark, 1960.

Literature: Grete Jalk [ed.]: "40 Years of Danish Furniture Design", vol. 4, p. 134-135.

DKK 40,000-60,000 / € 5,400-8,050



1031



1032



1033



1033 ©

HELGE VESTERGAARD JENSEN

b. 1917, d. 1987

Three seater sofa with tall, round Brazilian rosewood legs. Seat, sides and back upholstered with reddish brown leather. Designed 1960. This example made approx. 1960 by cabinetmaker Peder Pedersen. L. 240 cm.

Model presented at The Copenhagen Cabinetmakers' Guild Exhibition at Designmuseum Danmark, 1960.

Literature: Grete Jalk [ed.]: "40 Years of Danish Furniture Design", vol. 4, p. 134-135.

DKK 80,000-100,000 / € 11,000-13,500

1034 * ©

FINN JUHL

b. Frederiksberg 1912, d. Ordrup 1989

"The Egyptian Chair". A pair of Brazilian rosewood chairs. Seat and back upholstered with black leather. Designed 1949. These examples made 1960s by cabinetmaker Niels Vodder, stamped by maker. (2)

Literature: Grete Jalk [ed.]: "40 Years of Danish Furniture Design", vol. 3, ill. p. 125.

DKK 75,000-100,000 / € 10,000-13,500



1034





1035

1035 ©

FINN JUHL

b. Frederiksberg 1912, d. Ordrup 1989

"FJ 46". A pair of Brazilian rosewood armchairs. Seat and back upholstered with striped blue wool. These examples made 1960s by cabinetmaker Niels Vodder, stamped by maker. (2)

DKK 100,000 / € 13,500



1036

FINN JUHL

b. Frederiksberg 1912, d. Ordrup 1989

"FJ 45". A teak easy chair. Sides, back and seat upholstered with grey wool, natural leather edgings. Designed 1945. This example made 1950s by cabinetmaker Niels Vodder.

Provenance: Architect Knud Blach Petersen.

DKK 60,000 / € 8,050



1036

1037 *

FINN JUHL

b. Frederiksberg 1912, d. Ordrup 1989

"FJ 45". A teak easy chair. Seat and back upholstered with original, greyish blue wool, loose seat cushion with original orange/ochre wool, natural leather edgings. Designed 1945. This example made 1950s by cabinet-maker Niels Vodder, stamped by maker.

DKK 100,000-150,000 / € 13,500-20,000



1037



1038

1038

FINN JUHL

b. Frederiksberg 1912, d. Ordrup 1989

"Chieftain Chair". A mahogany easy chair. Seat, armrests and back upholstered with patinated natural leather, back fitted with buttons. Designed 1949. This example made approx. 1970 by upholsterer Ivan Schlechter, stamped by maker.

DKK 80,000 / € 10,500





1039

1039

POUL HENNINGSEN

b. Ordrup 1894, d. Hillerød 1967

"PH-3,5/2". Table lamp with browned brass stand marked "Pat. Appl.", with original green/bronze copper shades. This example manufactured 1927-1928 by Louis Poulsen. H. 44 cm.

DKK 40,000-50,000 / € 5,400-6,700



1040

1040
POUL HENNINGSEN

b. Ordrup 1894, d. Hillerød 1967

"PH-4/3". Table lamp with thick switch house and patinated brass stand marked "Pat. Appl.", with original green/bronze copper shades. This example manufactured 1927-1928 by Louis Poulsen. H. 54 cm.

Early version with screws on the side of the socket house.

DKK 80,000-100,000 / € 10,500-13,500



1041



1041

KAARE KLINT

b. Frederiksberg 1888, d. Copenhagen 1954

"The Red Chair". A set of eight chairs with profiled Cuban mahogany frame. Seat and back upholstered with original patinated Niger leather, fitted with brass nails. Model 39490. Designed 1930. These examples made 1930s by Rud. Rasmussen Cabinetmakers, with maker's paper label. (8)

KK label no. 11756 and 11585.

Literature: Gorm Harkær, Klintiana: "Kaare Klint", vol. 2, ill. and mentioned pp. 82-84. DKK 40,000 / € 5,400



1042



1042

FRITS HENNINGSEN

b. 1889, d. 1965

Freestanding two seater high back sofa with Cuban mahogany legs. Sides, seat, back and integrated armrests upholstered with original patinated Niger leather. This example made approx. 1936 by cabinetmaker Frits Henningsen. L. 152 cm.

Model presented at The Copenhagen Cabinetmakers' Guild Exhibition at Designmuseum Danmark, 1936.

Literature: Grete Jalk [ed.]: "40 Years of Danish Furniture Design", vol. 1, p. 245.

DKK 200,000-250,000 / € 27,000-33,500







1043

1043
RIGMOR ANDERSEN,
ATTRIBUTED

b. 1902, d. 1995

A set of four walnut chairs, oblong back with woven cane. Seat upholstered with patinated Niger leather. Probably made approx. 1930-1940s by cabinetmaker Th. Schmidt. (4)

Presumably early variant of similar chair presented at The Copenhagen Cabinetmakers' Guild Exhibition at Designmuseum Danmark, 1962.

Literature: Grete Jalk [ed.]: "40 Years of Danish Furniture Design", vol. 4, ill. p 191.

DKK 25,000-30,000 / € 3,350-4,050



1044

1044
MAJ SVANSTRÖM

Handwoven wool carpet in "rölakan" flat weave technique, decorated with polychrome geometrical pattern on light base. Signed monogram MS and KH. This example made by Klockargårdens Hemslöjd, Tällberg, Sweden, 20th century. 207 x 139 cm.

DKK 20,000 / € 2,700



1045

1045

KAJ GOTTLOB, ATTRIBUTED

b. Copenhagen 1887, d. 1976

Freestanding desk and small desk top box of Caucasian nut wood. Desk with rounded edges, front with three drawers. Box with two pigeon-holes and four drawers with round bone handles. Presumably made 1930s by cabinetmaker A.J. Iversen. Desk: H. 72,5 cm. L. 157 cm. W. 80,5 cm. Box: H. 16 cm. L. 80 cm. D. 26 cm. (2)

Similar desk and desk top box presented at The Copenhagen Cabinetmakers' Guild Exhibition in 1931 and 1932 made by cabinetmaker A.J. Iversen.

Literature: Grete Jalk [ed.]: "40 Years of Danish Furniture Design", vol. 1, p. 109 and 136-137. DKK 25,000 / € 3,350



1046

1046

ARNE JACOBSEN

b. Copenhagen 1902, d. s.p. 1971

HANS J. WEGNER

b. Tønder 1914, d. Gentofte 2007

"Aarhus City Hall". A pair of desk lamps with original white lacquered adjustable shade and base, adjustable brass stem and foot, white bakelite push button switch. Designed 1938-1941. These examples manufactured approx. 1940s by Louis Poulsen. H. 35 cm. W. 22 cm. (2)

Provenance: Aarhus City Hall, 1940's.

The first version of the lamp was designed with a foot for fixed installations on the tables in the reading room at Nyborg Library.

For Aarhus City Hall another foot was designed so the lamp could be moved, and a version with a different shade was also designed. Both lamps were a permanent feature on the desks in Aarhus City Hall.

As far as we know, none of the two lamps have since been in production.

Exhibited at the Louisiana Museum in connection with Arne Jacobsen's 100-year anniversary in 2002.

Literature: Planmøbel catalogue approx. 1943, ill.

Literature: Jens Lindhe [ed.], "Aarhus City Hall," Arkitektens Forlag 1991, p. 50. Technical drawing of a different lamp with the same foot.

Literature: Felix Solaguren - Beascoa, Arne Jacobsen, Santa & Cole, Spain. p. 66.

It has been discussed, whether Hans J. Wegner can be attributed as the designer of the inventory and furniture of Aarhus City Hall and Nyborg Library.

In 1938 Arne Jacobsen and Erik Møller hired the 24-year-old Wegner to design the inventory and furniture of the Aarhus City Hall. Since Aarhus City Hall was not yet finished, Wegner was first assigned to design all the inventory and furniture for Nyborg Library, which Flemming Lassen & Erik Møller had won the competition to build.

The fact remains that Wegner has drawn all the lines, even if his name does not appear on the drawings.

DKK 40,000-50,000 / € 5,400-6,700

1047

HANS J. WEGNER

b. Tønder 1914, d. Gentofte 2007

Tall beech chest of drawers, front with 26 drawers and two pull-out leaves, handles and base of mahogany. This example manufactured approx. 1941 by Planmøbel, Aarhus. H. 141 cm. W. 93 cm. D. 41 cm.

Provenance: Aarhus City Hall.

DKK 50,000-60,000 / € 6,700-8,050



1047

1048

KAARE KLINT

b. Frederiksberg 1888, d. Copenhagen 1954

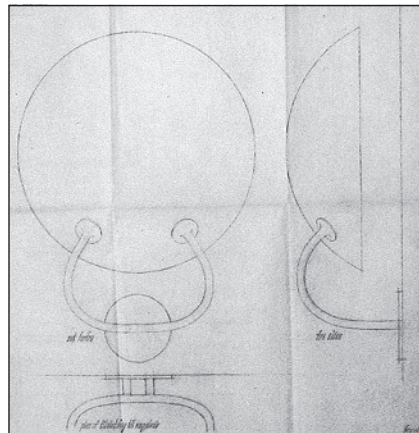
"The Red Chair". A set of four chairs with profiled Cuban mahogany frame. Seat and back upholstered with original, patinated Niger leather, fitted with brass nails. Model 39490. Designed 1930. These examples made 1930-1940s by Rud. Rasmussen Cabinetmakers, with maker's paper label. (4)
KK label no. 13258.

Literature: Gorm Harkær, Klintiana: "Kaare Klint", vol. 2, ill. and mentioned pp. 82-84. DKK 40,000 / € 5,400





1049



1049

ARNE JACOBSEN

b. Copenhagen 1902, d. s.p. 1971

Wall lamp with frosted glass shade on twin bracket brass frame, inside with double bakelite sockets. This example manufactured 1930s by Louis Poulsen. H. 41 cm. Diam 30 cm.

Designed for Gentofte Stadium and K.F.U.M. 1936-1943.

Literature: Felix Solaguren-Beascoa: "Jacobsen 2", referred and ill. pp. 56-57. DKK 25,000 / € 3,350

1050

FRITS SCHLEGEL

b. 1896, d. 1965

A polished brass table lamp with adjustable shade. Model B29. This example manufactured 1940s by Lyfa. H. 60 cm.

Provenance: Frits Schlegel. Hence by descent in the family.

Literature: Lyfa catalogue no. 1, 1946, referred to and ill. p. 206. DKK 15,000-20,000 / € 2,000-2,700



1050



1051



1052

1051
FRITS SCHLEGEL

b. 1896, d. 1965

A pair of armchairs with sweeping, black stained beech frame. Seat and back with woven seagrass. These examples manufactured approx. 1930s by Fritz Hansen. (2) DKK 20,000 / € 2,700

1052
FINNISH DESIGN

Handwoven wool pile carpet in "rya" technique. Polychrome pattern in shades of green, yellow, brown and red. This example made approx. 1930-1940s in Finland. 197 x 137 cm.

DKK 10,000-12,000 / € 1,350-1,600

1053

TOVE KINDT-LARSEN

b. 1906, d. 1994

EDVARD KINDT-LARSEN

b. Frederiksberg 1901, d. Gentofte 1982

Easy chair mounted on round Cuban mahogany legs. Sides and back upholstered with light fabric, seat with brown fabric. This example made 1940s by cabinet-maker Gustav Bertelsen.

Model presented at The Copenhagen Cabinetmakers' Guild Exhibition at Designmuseum Danmark, 1938.

Literature: Grete Jalk [ed.]: "40 Years of Danish Furniture Design", vol. 2, ill. p. 39. DKK 75,000 / € 10,000



1053

1054

FRITS HENNINGSEN

b. 1889, d. 1965

Armchair with Cuban mahogany frame. Seat, back and armrests upholstered with natural leather, fitted with brass nails. Designed 1933. This example made 1930-1940s by cabinetmaker Frits Henningsen.

Model presented at The Copenhagen Cabinetmakers' Guild Exhibition at Designmuseum Danmark, 1933.

Literature: Grete Jalk [ed.]: "40 Years of Danish Furniture Design", vol. 1, pp. 156-157.

DKK 25,000 / € 3,350



1054



1055

1055

BØRGE MOGENSEN

b. Aalborg 1914, d. Gentofte 1972

A pair of patinated oak sideboards, front with two doors. Interior with shelves and trays. Special brass keys and fittings. Model A 232. These examples manufactured 1960s by C.M. Madsen for FDB, stamped by maker. H. 93,5 cm. W. 122 cm. D. 43,5 cm. (2)

Literature: FDB Catalogue, 1964, p. 34.

DKK 20,000-25,000 / € 2,700-3,350

1056

FRITZ HANSEN

A pair of easy chairs with frame of stained birch and beech. Back with woven cane. Loose cushions in seat and back upholstered with patinated natural leather, back fitted with leather covered buttons. These examples manufactured 1930s by Fritz Hansen. (2)

Variant of model 1588 with cane in back.

Literature: Fritz Hansen catalogue 1942, ill. p. 12.

DKK 30,000-40,000 / € 4,050-5,400



1057

PHILIP ARCTANDER

b. Copenhagen 1916, d. s.p. 1994

"Clam Sofa". Freestanding two seater sofa with beech legs. Seat and back upholstered with light greyish brown Savak wool, fitted with buttons. Designed approx. 1944. This example made late 1940s by Nordisk Staal- & Møbel Central. L. 147 cm. DKK 80,000 / € 11,000

1058 ©

MOGENS LASSEN

b. Copenhagen 1901, d. Holte 1987

"The Egyptian Table". Circular Brazilian rosewood coffee table mounted on foldable frame. Top with raised edge, brass fittings. Designed 1935. This example made 1950-1960s by cabinetmaker A.J. Iversen. H. 52,5 cm. Diam. 85 cm.

Literature: Grete Jalk [ed.]: "40 Years of Danish Furniture Design", vol. 2, p. 115. DKK 40,000 / € 5,400



1058



1057





1059

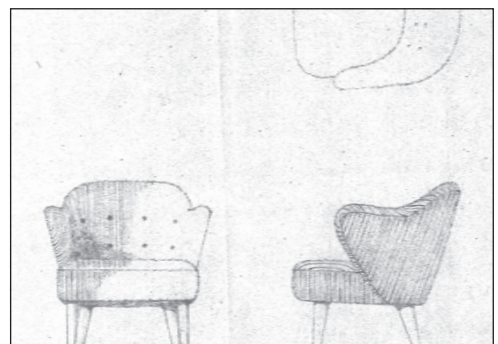
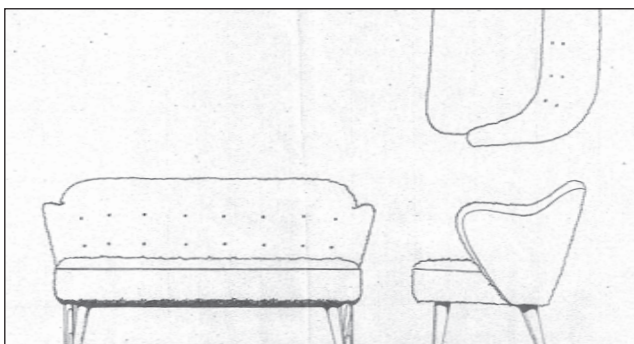
1059
FLEMMING LASSEN

b. 1902, d. 1984

Freestanding two seater sofa and a pair of matching easy chairs with ash wood legs. Sides, seat and back upholstered with blue plush, back fitted with buttons. Designed 1940. These examples made 1940-1950s by cabinetmaker Jacob Kjær. Sofa: L. 150 cm. (3)

Easy chair model presented at The Copenhagen Cabinet-makers' Guild Exhibition at Designmuseum Danmark, 1940.

Literature: Grete Jalk [ed.]: "40 Years of Danish Furniture Design", vol. 2, p. 116. DKK 150,000 / € 20,000





1059



1060

1060
INGEGERD SILOW

b. 1916, d. 2005

Unusual and rare handwoven wool carpet in "röla-kan" flat weave technique with polychrome, leaf-like pattern. Signed monogram IS. This example made approx. 1960s Sweden. 277 × 198 cm.

DKK 50,000 / € 6,700

1061
TAGE ANDERSEN

b. Heltborg, Thy 1947

A pair of sculptural high back chairs of black painted and stained mdf, mounted on three legs. Designed approx. 1992. Made 1992-1995 for Tage Andersen. H. 180 cm. (2)

Made in very few pieces.

Literature: Tage Andersen, "Tage Andersen II - Interiør, blomsterkunst og eksteriør", ill. on the front cover.

DKK 40,000-50,000 / € 5,400-6,700



1061

1062

NORWEGIAN DESIGN

"Florida". A pair of easy chairs with round, tapering beech legs. Sides and back upholstered with light blue velvet, seat with sheepskin. These examples manufactured 1954-1955 by Vatne Møbler, Norway. (2)

DKK 30,000-40,000 / € 4,050-5,400



1062



1063

1063

HANS J. WEGNER

b. Tønder 1914, d. Gentofte 2007

"JH 816". Small, triangular stool with red painted, three-legged beech frame. Seat with woven paper cord. This example made 1970 by cabinetmaker Johannes Hansen. H. 26 cm. W./D. 40 cm.

Made in 1970 by Johannes Hansen in approx. 10 pieces for an exhibition of Cabinetmaker furniture. Never in production. DKK 10,000-15,000 / € 1,350-2,000



1064

1064

SWEDISH DESIGN

Handwoven wool carpet in "rölakan" flat weave technique, striped base in shades of blue. Unsigned. Made in Sweden, 20th century. 236 x 152 cm.

DKK 10,000 / € 1,350



1065



1065

EDWARD WORMLEY

b. 1907, d. 1995

"New York". Three seater sofa with black stained wood frame, dowels of East Indian rosewood. Sides, seat and back upholstered with light wool, back fitted with buttons. Model 5316. This example manufactured approx. 1950s by Ljungs Industrier/DUX, Sweden. L. 230 cm.

DKK 30,000-40,000 / € 4,050-5,400



1066

1066 *

HALLDOR GUNNLØGSSON

b. Frederiksberg 1918, d. Rungsted 1985

Set of four brass wall lamps, mounted with two semi spherical opal glass shades. LP Type no. 79-217. These examples manufactured 1960s by Louis Poulsen. Diam. 26 cm. (4)

Provenance: Andelsbanken, Copenhagen.

DKK 20,000-30,000 / € 2,700-4,050

1067

SVANTE SKOGH

Chaise longue with stained beech frame. Seat and back upholstered with striped plush, reverse side of back with grey wool and footstool with black vinyl front. This example manufactured 1950s by Engen, Örskelljunga, Sweden. L. 140 cm.

DKK 25,000 / € 3,350



1067



1068

1068 *

MATS THESELIUS

b. Stockholm 1956

"El Dorado". A brass easy chair decorated with resp. frosted/
polished squares, handles of birch. Seat and back upholstered
with natural leather. This example no. 70/360 made 2002
by Källemo, Sweden with maker's metal plaque. H. 79 cm.
Diam. 66 cm.

Original box included.

DKK 60,000 / € 8,050



1069

1069

PETER HVIDT

b. Copenhagen 1916, d. s.p. 1986

ORLA MØLGAARD-NIELSEN

b. Ålborg 1907, d. Hellerup 1993

Three seater sofa and a pair of matching easy chairs with teak frame and runner legs. Loose cushions in seat and back upholstered with light wool. Model 130. Designed 1961. These examples manufactured 1960s by France & Søn. Sofa: L. 183 cm. (3) *Easy chairs a variant without armrests.*

Literature: Mobilia 1961.

DKK 30,000-40,000 / € 4,050-5,400

1070

PETER HVIDT

b. Copenhagen 1916, d. s.p. 1986

ORLA MØLGAARD-NIELSEN

b. Ålborg 1907, d. Hellerup 1993

Rectangular coffee table of solid teak, frame with runner legs. This example manufactured 1960s by France & Søn, with maker's metal plaque. H. 45 cm. L. 174 cm. W. 67 cm.

DKK 15,000-20,000 / € 2,000-2,700



1070



1069

1071
PETER HVIDT

b. Copenhagen 1916, d. s.p. 1986

ORLA MØLGAARD-NIELSEN

b. Ålborg 1907, d. Hellerup 1993

Circular coffee table of solid teak, frame with runner legs. This example manufactured 1960s by France & Søn, with maker's metal plaque. H. 45 cm. Diam. 90 cm. *DKK 20,000 / € 2,700*



1071

1072 *

HANS J. WEGNER

b. Tønder 1914, d. Gentofte 2007

“China Chair”. A set of six cherry armchairs. Loose seat cushion upholstered with light brown coloured leather, fitted with buttons. Model 4283. Designed 1944. These examples manufactured 2007 by Fritz Hansen, with maker’s paper label. (6)

DKK 40,000-50,000 / € 5,350-6,700

1073 *

KAARE KLINT

b. Frederiksberg 1888, d. Copenhagen 1954

Cherry conference table with profiled edges and legs. Consisting of a square table and a pair of D-ends. Brass fittings. This example made 2007 by Rud. Rasmussen Cabinetmakers, with maker’s paper label. H. 73,5 cm. W. 146 cm. Square table: L./W. 146 cm. D-ends: L. 73 cm. Total. L. 292 cm. (3)

Label no. 53058. DKK 15,000-20,000 / € 2,000-2,700



1073



1072





1074

1074

HANS J. WEGNER

b. Tønder 1914, d. Gentofte 2007

"JH 563". Freestanding desk with solid oak frame. Teak top with two drawers in front. Stretcher with V-shape, brass fittings. Designed 1950. This example made approx. 1956 by cabinetmaker Johannes Hansen. H. 74,5 cm. L. 172 cm. W. 84 cm.

Provenance: Bought by present owner at Johannes Hansen in 1956.

Model presented at The Copenhagen Cabinetmakers' Guild Exhibition at Designmuseum Danmark, 1950.

Literature: Grete Jalk [ed.]: "40 Years of Danish Furniture Design", vol. 3, ill. p. 142. DKK 60,000 / € 8,050



1075

HANS J. WEGNER

b. Tønder 1914, d. Gentofte 2007

"The Chair". A pair of teak armchairs. Seats upholstered with black leather. Model JH 503. Designed 1949. These examples made approx. 1960-1970s by cabinetmaker Johannes Hansen, stamped by maker. (2)

Literature: Grete Jalk [ed.], "40 Years of Danish Furniture Design", Vol. 3, p. 98-101 and p. 140-142.

DKK 25,000-30,000 / € 3,350-4,050



1075



1076



1076

HANS J. WEGNER

b. Tønder 1914, d. Gentofte 2007

"Dolphin Chair". A very rare oak folding deckchair. Seat and back with woven cane, brass fittings. Model JH 511. Designed 1950. This example made approx. 1955 by cabinetmaker Johannes Hansen.

Provenance: Bought by present owner in 1955.

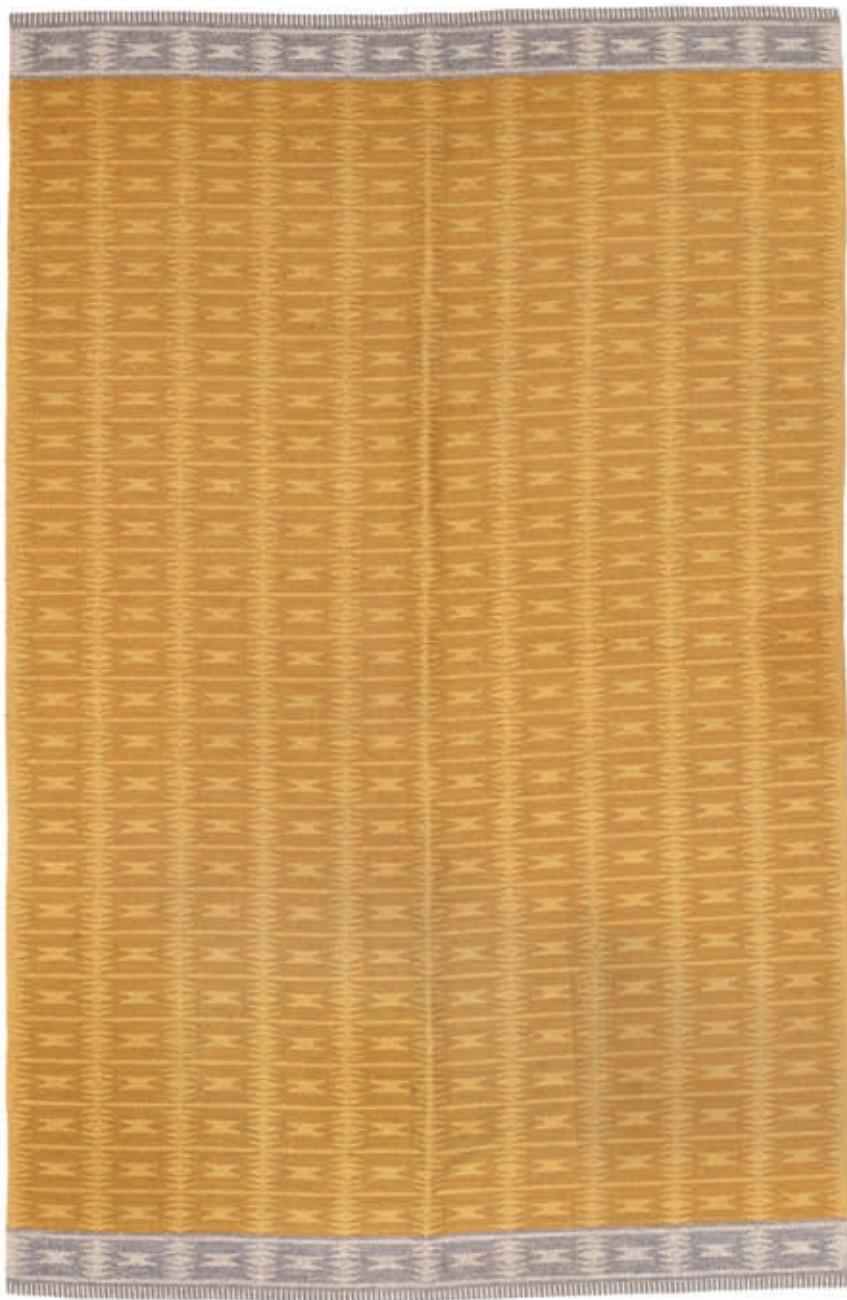
Model presented at The Copenhagen Cabinetmakers' Guild Exhibition at Designmuseum Danmark, 1950.

Literature: Grete Jalk [ed.]: "40 Years of Danish Furniture Design", vol. 3, pp. 140, 143.

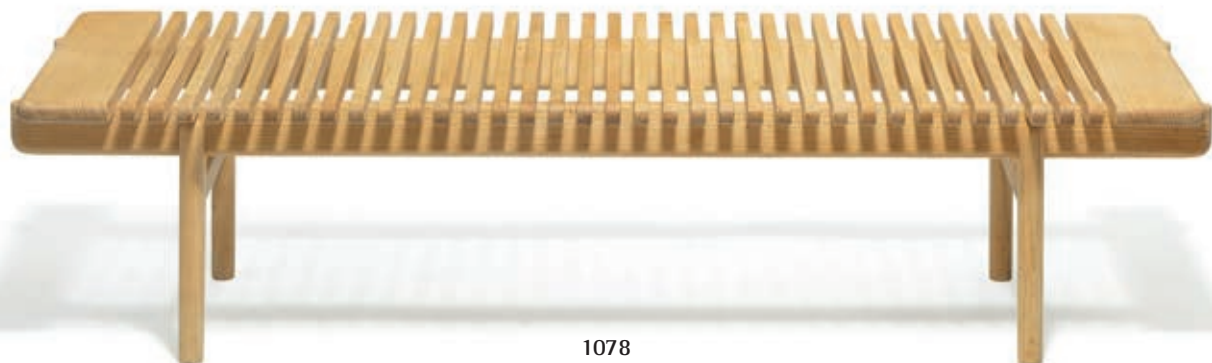
DKK 400,000-600,000 / € 54,000-80,500







1077



1078

1077

INGRID DESSAU

b. Svalöv 1923, d. 2000, maiden name Ingrid Peterson

Handwoven wool carpet in "rölakan" flat weave technique, yellow base with geometrical pattern and grey hem. Unsigned. This example made 1950s by Kasthall, Sweden. 395 x 193 cm.

DKK 12,000-15,000 / € 1,600-2,000

1078

HANS J. WEGNER

b. Tønder 1914, d. Gentofte 2007

"JH 589". Ash bench with pierced seat and round legs. Designed 1953. This example made 1970s by cabinetmaker Johannes Hansen, with maker's label. H. 32 cm. L. 140 cm. W. 51 cm.

Hans J. Wegner designed the bench for the entrance hall in his private home.

DKK 25,000-30,000 / € 3,350-4,050

1079

HANS J. WEGNER

b. Tønder 1914, d. Gentofte 2007

"Flag Halyard Chair". Easy chair with original white lacquered steel frame and black rubber "shoes". Chromed steel top with complete flag halyard. Headrest upholstered with black leather, later white sheepskin included. Model GE 225. Designed 1950. This example manufactured 1970-1980s by Getama. *Model presented at The Arts & Crafts Spring Exhibition at Designmuseum Danmark 1950.*

DKK 60,000-80,000 / € 8,050-11,000



1079



1080

1080 *

HANS J. WEGNER

b. Tønder 1914, d. Gentofte 2007

"The Chair". A set of 12 mahogany armchairs. Seats upholstered with red leather. Model JH 503. Designed 1949. These examples made approx. 1996 by PP Møbler, resp. with label and stamped by maker. (12)

Literature: Grete Jalk [ed.], "40 Years of Danish Furniture Design", Vol. 3, p. 98-101 and p. 140-142.

DKK 100,000-120,000 / € 13,500-16,000



1080



1081

1081

INGA-MI VARNEUS RYDGREN

Handwoven wool carpet in "rölakan" flat weave technique, decorated with polychrome grid-pattern. Signed JLH and monogram IMV. Made 1950-1960s by Jönköpings Läns Hemslöjd, Sweden. 220 x 170 cm.

DKK 40,000 / € 5,400



1082

1082 *

HALLDOR GUNNLØGSSON

b. Frederiksberg 1918, d. Rungsted 1985

Set of four brass wall lamps, mounted with two semi spherical opal glass shades. LP Type no. 79-217. These examples manufactured 1960s by Louis Poulsen. Diam. 26 cm. (4)

Provenance: Andelsbanken, Copenhagen.

DKK 20,000-30,000 / € 2,700-4,050

1083

BØRGE MOGENSEN

b. Aalborg 1914, d. Gentofte 1972

A pair of patinated oak chests of drawers, front with each ten drawers with carved handles. These examples manufactured 1960s by C.M. Madsen for FDB. H. 93,5 cm. W. 122 cm. D. 44 cm.

DKK 40,000 / € 5,400



1083



1084



1085

1084

HANS J. WEGNER

b. Tønder 1914, d. Gentofte 2007

"China chair". A set of six stained cherry armchairs. Loose seat cushion upholstered with brown leather, fitted with buttons. Model 4283. Designed 1944. These examples manufactured 1977 by Fritz Hansen, with maker's label. (6) *DKK 40,000 / € 5,350*

1085

HANS J. WEGNER

b. Tønder 1914, d. Gentofte 2007

"China chair". A set of eight stained cherry armchairs. Loose seat cushion upholstered with brown leather, fitted with buttons. Model 4283. Designed 1944. These examples manufactured 1977 by Fritz Hansen, with maker's label. (8) *DKK 50,000 / € 6,700*

1086

HANS J. WEGNER

b. Tønder 1914, d. Gentofte 2007

"China chair". A set of six stained cherry armchairs. Loose seat cushion upholstered with brown leather, fitted with buttons. Model 4283. Designed 1944. These examples manufactured 1977 by Fritz Hansen, with maker's label. (6) *DKK 40,000 / € 5,350*



1086



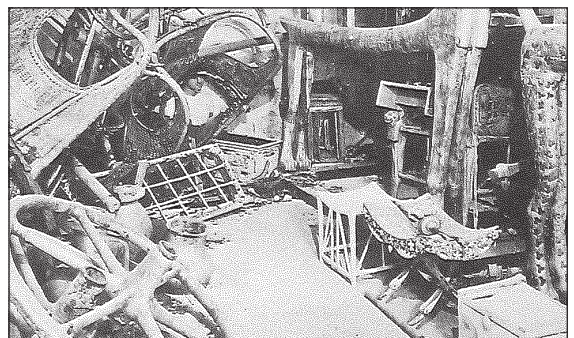
1087

1087

PEDER BLOCH-POULSEN

Small stool with laburnum wood frame, inlays of East Indian rosewood and maple. Made 2015 by cabinetmaker Peder Bloch-Poulsen, with metal plaque. H. 31 cm. L. 32 cm. W. 29 cm.

Made from Ole Wanscher's sketches and measurements from 1950, of the stool found in Tutankhamun's tomb. That stool was originally made of cedar wood with ebony and ivory inlays. DKK 25,000 / € 3,350



Tutankhamun's tomb, 1922.

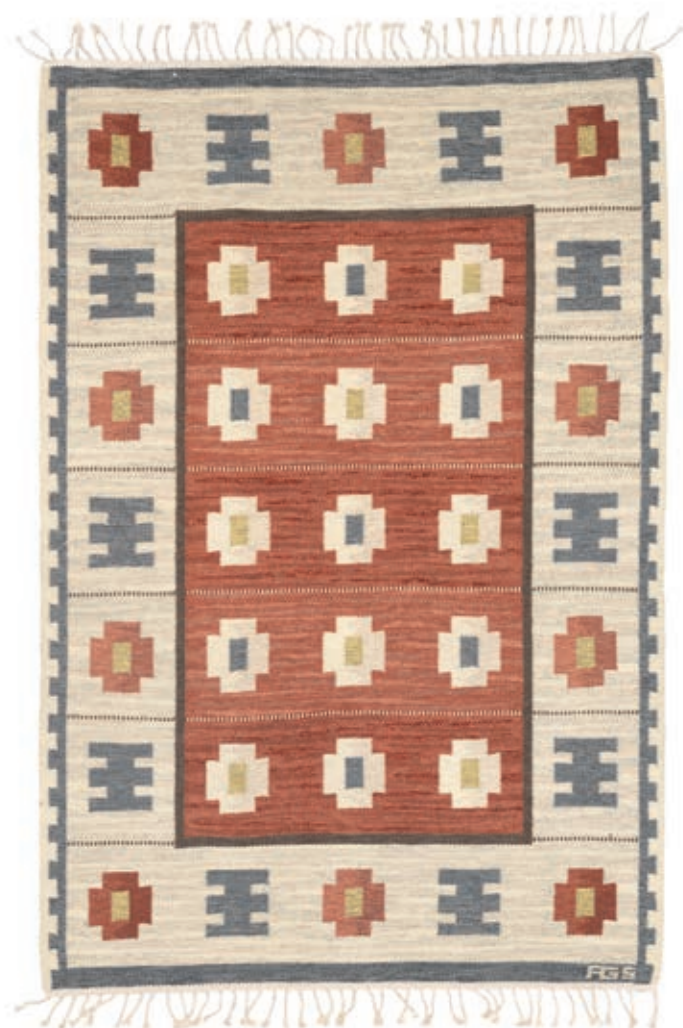


1088

**1088
NIELS JENSEN**

East Indian rosewood armchair with seat of woven cane.
Back with carved, circular decoration. This example
made approx. 1980s by cabinetmaker Niels Jensen.

DKK 25,000 / € 3,350



1089

1089

ANNA - GRETA SJÖQVIST

Handwoven wool carpet in "rölakan" flat weave technique, light base with geometrical pattern in reddish brown, yellow and greyish blue. Signed monogram AGS. This example made approx. 1950s in Sweden. 246 x 167 cm.

DKK 20,000-30,000 / € 2,700-4,050

1090

PETER HVIDT

b. Copenhagen 1916, d. s.p. 1986

ORLA MØLGAARD - NIELSEN

b. Ålborg 1907, d. Hellerup 1993

Sideboard of solid teak with round legs. Front with five drawers and two tambour doors. Model 309 C. Designed 1956. This example manufactured 1955-1960 by Søborg Møbler. H. 86,5 cm. L. 166 cm. W. 48 cm.

DKK 20,000-25,000 / € 2,700-3,350



1090



1091

1091
PETER HVIDT

b. Copenhagen 1916, d. s.p. 1986

ORLA MØLGAARD-NIELSEN

b. Ålborg 1907, d. Hellerup 1993

Freestanding solid teak desk with round, tapering legs with oval stretchers. Front with two drawers with brass fittings. Model 310. Designed 1955. This example manufactured 1955-1960 by Søborg Møbler. H. 73 cm. W. 80 cm. L. 170 cm.

DKK 25,000-30,000 / € 3,350-4,000



1092

1092
SWEDISH DESIGN

Handwoven wool carpet in "rölakan" flat weave technique, red/pink and polychrome squares in grid pattern with light grey and brown borders. Signed JHL. This example made by Jönköpings Läns Hemslöjd, Sweden 20th century. 252 x 166 cm.

DKK 40,000 / € 5,400



1093



1094

1093 ©

KAARE KLINT

b. Frederiksberg 1888, d. Copenhagen 1954

Circular Brazilian rosewood coffee table with profiled edges. Square shelf and top with raised edge. Model 6687. Designed 1930. This example made 1960 by Rud. Rasmussen Cabinetmakers. H. 52 cm. Diam. 100 cm.

Provenance: Bought by present owner in 1960 from Rud. Rasmussen Cabinetmakers.

Literature: Gorm Harkær, Klintiana: "Kaare Klint", vol. 2, p. 55. DKK 20,000 / € 2,700



1095

1095 ©

KAARE KLINT

b. Frederiksberg 1888, d. Copenhagen 1954

A pair of Brazilian rosewood "safari chairs" with a matching stool. Seat, back, armrests and one loose seat cushion upholstered with original patinated Niger leather, cushion fitted with buttons. Designed 1933. These examples made 1960 by Rud. Rasmussen Cabinetmakers. (3)

Provenance: Bought by present owner in 1960 from Rud. Rasmussen Cabinetmakers.

DKK 20,000-25,000 / € 2,700-3,350

1094

SWEDISH DESIGN

Handwoven wool carpet in "rölakan" flat weave technique, red base with light grid pattern. Signed NKT. Made for Nordiska Kompaniets Textilkammare, Sweden, 20th century. 234 x 173 cm.

DKK 12,000-15,000 / € 1,600-2,000



1096

1096

KAARE KLINT

b. Frederiksberg 1888, d. Copenhagen 1954

"The Red Chair". A set of six chairs and two armchairs with profiled Cuban mahogany frame. Seat and back upholstered with original patinated Niger leather, fitted with brass nails. Model 3758 and 3758 A. Designed 1930. These examples made 1930-1940s by Rud. Rasmussen Cabinetmakers, with maker's paper label. (8)

KK label no. 13904.

Literature: Gorm Harkær, *Klintiana: "Kaare Klint"*, vol. 2, ill. and mentioned pp. 82-84. DKK 70,000-80,000 / € 9,400-11,000





1097

POUL HENNINGSEN

b. Ordrup 1894, d. Hillerød 1967

"PH Grand Piano". Mignon type, seven octaves with frame of black stained wood and chromed steel. Edge covered with patinated Niger leather. Lyre and three curved legs of chromed steel. Lid and sheet holder of later red perspex, divided with chromed steel lists. Designed 1931. This example made approx. 1930s by Andreas Christensen. H. 94 cm. L. 147 cm. W. 149 cm.

DKK 350,000-400,000 / € 47,000-54,000



1097

1098

POUL HENNINGSEN

b. Ordrup 1894, d. Hillerød 1967

"PH-6/3". Rare floor lamp with browned brass height adjustable stand and socket marked "Pat Appl." with original green/bronze copper shades, foot mounted on six orbs. This example manufactured 1926-1928 by Louis Poulsen.


Literature: "Light Years Ahead", described and ill. p. 152.

Literature: "Louis Poulsen: Pricelist PH no. 5, August 1927, described and ill. p. 33-34.

DKK 300,000 / € 40,500

PH lampen

Indregistreret Varemærke

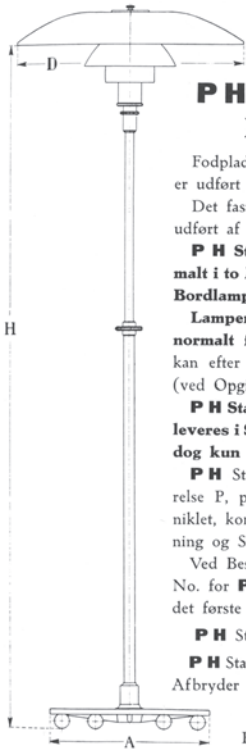


PRISLISTE **PH** Nr. 5
AUGUST 1927

Patentanmeldt og mønsterbeskyttet
i alle Kulturstater

☞

LOUIS POULSEN & CO.
NYHAVN 11 · KØBENHAVN K.
CENTRAL 144 TLGR. ELPECO



PH STANDERLAMPEN

Fodpladen, der hviler paa 6 Kugler, er udført af sortlakeret Støbejern.
Det faste og det forskydelige Rør er udført af Messing.

PH Standerlampen leveres normalt i to Modeller, svarende til PH Bordlamper Model 4/3 og 5/3.

Lampen er indstillelig i Højden, normalt fra 115 cm til 150 cm, men kan efter Ønske leveres i andre Maal (ved Opgivelse af Maksimalmaalet H).

PH Standerlampen kan endvidere leveres i Specialudførelse, Model 6/3, dog kun med Metalskærme.

PH Standerlampen leveres i Udførelse P, patineret, og BN, blanktforniklet, komplet monteret med 3 m Ledning og Stikprop.

Ved Bestilling anføres det tilsvarende No. for **PH** Bordlampen, dog erstattes det første Tal af Tallet 6 f. Eks.

PH Standerlampe No. 67053 P.

PH Standerlampen leveres ikke med Afbryder i Foden.

Priser se næste Side.

33



1098



1099

1099
INGRID DESSAU

b. Svalöv 1923, d. 2000, maiden name Ingrid Peterson

"Sylarna" (The Awls). Handwoven wool carpet in "rölakan" flat weave technique with geometrical pattern in black and shades of green. Unsigned. This example made late 1950s by Kasthall, Sweden. 202 x 143 cm. DKK 15,000-20,000 / € 2,000-2,700

1100 ©
OLE WANSCHER

b. Frederiksberg 1903, d. Charlottenlund 1985

Brazilian rosewood dining room suite consisting of eight chairs and a circular dining table with extension and three extra leaves, hereof one with rail. Seats upholstered with black horse hair. Frames and rail with carved profiles. These examples made 1950-1960s for retailer Illums Bolighus. Table: H. 73,5 cm. Diam. 125,5 cm. Total L. 298 cm. (9)

DKK 25,000-30,000 / € 3,350-4,050



1100



1100



1101

1101

RUD. RASMUSSEN

Tall mahogany sideboard with profiled edges. Front with nine drawers and two doors, brass handles and fittings. This example made 1940s by Rud. Rasmussen Cabinetmakers, with maker's paper label. H. 116 cm. D. 48 cm. L. 160 cm.

KK label no. 16732. DKK 20,000-30,000 / € 2,700-4,050

1102

KAARE KLINT

"The Red Chair". A pair of chairs with profiled Cuban mahogany frame. Seat and back upholstered with original, patinated Niger leather, fitted with brass nails. Model 39490. Designed 1930. These examples made 1930s by Rud. Rasmussen Cabinetmakers, with maker's paper label. (2)

KK label no. 10814.

Literature: Gorm Harkær, Klintiana: "Kaare Klint", vol. 2, ill. and mentioned pp. 82-84. DKK 20,000 / € 2,700



1102



1103

1103

INGRID DESSAU

b. Svalöv 1923, d. 2000, maiden name Ingrid Peterson

Handwoven wool carpet in "rölakan" flat weave technique, geometrical pattern in shades of brown and grey. Unsigned. This example made approx. 1950s by Kasthall, Sweden. 203 x 138 cm.

DKK 12,000 / € 1,600



1104

1104
OLE WANSCHER

b. Frederiksberg 1903, d. Charlottenlund 1985

A pair of mahogany armchairs with sweeping hind legs. Seat upholstered with black leather. Model J2833. Designed 1958. These examples made 1960s by cabinetmaker A.J. Iversen. (2)

Model presented at The Copenhagen Cabinetmakers' Guild Exhibition at Designmuseum Danmark, 1958.

Literature: Grete Jalk [ed.]: "40 Years of Danish Furniture Design", vol. 4, p. 57. DKK 20,000 / € 2,700



1105

1105
FRITS HENNINGSEN

b. 1889, d. 1965

Circular Cuban mahogany side table. Solid table top with raised edge. Three-legged pillar base with brass "shoes". This example made approx. 1930-1940s by cabinetmaker Frits Henningsen. H. 59 cm. Diam. 85 cm.

DKK 20,000 / € 2,700



1106

1106

POUL HENNINGSEN

b. Ordrup 1894, d. Hillerød 1967

"PH-1/1 Cascade". Two-level browned brass 16-armed chandelier, brown bakelite socket houses with frosted glass shades. This example manufactured 1930s by Louis Poulsen. H. 170 cm. Diam. 102 cm.

DKK 75,000-100,000 / € 10,000-13,500

1107

POUL KJÆRHOLM

b. Østervrå 1929, d. Hillerød 1980

"PK 9". A set of six chairs mounted on chromed steel frame. Seat and back upholstered with original black leather. Designed 1960. These examples manufactured 1993 by Fritz Hansen, with maker's paper label. (6)

DKK 80,000-100,000 / € 10,500-13,500



1107

1108

LUDWIG MIES VAN DER ROHE

b. Aachen, Germany 1886, d. Chicago, USA 1969

"Barcelona". A pair of lounge chairs with chromed steel frame. Loose cushions in seat and back upholstered with natural leather, fitted with buttons. Designed approx. 1929. These examples manufactured 1960s by Knoll. (2)
Provenance: Artist Ib Geertsen (1919-2009).

DKK 30,000-40,000 / € 4,050-5,400



1109 ©

BODIL KJÆR

b. Hatting 1932

Freestanding Brazilian rosewood desk with chromed steel frame. Top with four integrated drawers in rail. Designed 1959. This example manufactured approx. 1960-1970s by E. Pedersen & Søn, with maker's paper label. H. 73 cm. W. 91,5 cm. L. 184 cm.

DKK 60,000-80,000 / € 8,050-11,000



1109



1110

HANNE KJÆRHOLM

b. 1930, d. 2009

"Box of Beauty". Vanity table with reversible brushed steel frame for sitting or standing use. Black high gloss painted box with fold-up mirror, mahogany interior with storage compartments. Sides with two small drawers. Loose mahogany shelf/table top. Model EP 12. Made approx. 2004 by cabinetmakers Søren Risvang and Einar Pedersen. Box: H. 24 cm. W./D. 48 cm. Frame: H. 93,5 cm. W. 50 cm. D. 48 cm. *The "Box of Beauty" was designed for The Danish Furniture Fair's competition in 2004, where it won first prize. Signed and numbered by the designer and the cabinetmakers, no. 2/50. DKK 40,000 / € 5,400*



1110



1111

1111

POUL KJÆRHOLM

b. Østervrå 1929, d. Hillerød 1980

"PK 11". A pair of armchairs with chromed steel frame and ash wood backrest. Seat upholstered with original cognac coloured leather. Designed 1957. These examples manufactured approx. 1960s by E. Kold Christensen, stamped by maker. (2)

DKK 30,000-40,000 / € 4,050-5,400

1112

POUL KJÆRHOLM

b. Østervrå 1929, d. Hillerød 1980

"PK 55". Work table with brushed steel frame. Rectangular oak top. Designed 1957. This example manufactured 1960s by E. Kold Christensen, stamped by maker. H. 68,5 cm. L. 180 cm. D. 90 cm.

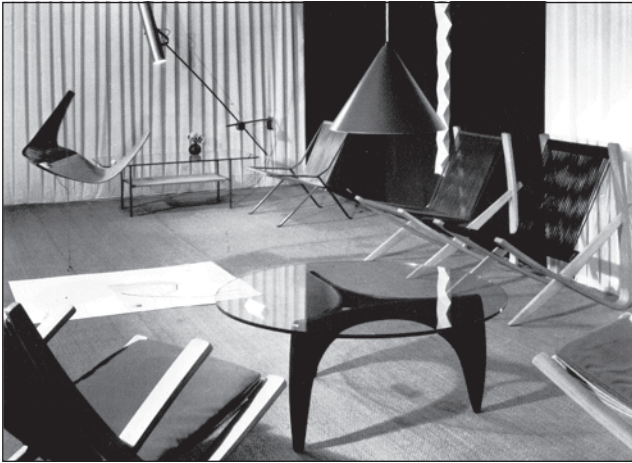
DKK 20,000-25,000 / € 2,700-3,350



1112







Fritz Hansen, Exhibition of applied arts, Zurich 1952.

1113 ^{CD}

POUL KJÆRHOLM

b. Østervrå 1929, d. Hillerød 1980

"The Bowstring Chair". Unique easy chair with laminated ash wood frame. Seat and back with sand coloured flag halyard. Designed 1952. Made as a prototype approx. 1952 by Fritz Hansen.

Provenance: Poul Kjærholm, hence by descent in the family.

Exhibited: Fritz Hansen, Zürich 1952.

This present chair is one of only two ever made.

Kjærholm graduated from the School of Arts and Crafts in 1952 and was hired by Fritz Hansen to work in the factory experimenting with materials. Kjærholm experimented with steam bent wood, and the "bowstring" chairs from this period were designed with a minimum number of parts, which eliminated the traditional distinction between the legs and the seat frame.

DKK 300,000-500,000 / € 40,500-67,000



1113

1114

GRETE JALK

b. 1920, d. 2006

Set of three very rare chairs, one of solid oak and two of solid beech. Cushions in seat and back upholstered with natural leather. Cushions and reverse side of back fitted with leather covered buttons. Designed 1963. These examples made approx. 1963 by cabinetmaker J. H. Johansens Eftf. (3)

Provenance: Artist Ib Geertsen (1919-2009).

Model presented at The Copenhagen Cabinetmakers' Guild Exhibition at Designmuseum Danmark, 1963.

Literature: Grete Jalk [ed.]: "40 Years of Danish Furniture Design", vol. 4, p. 242-243. DKK 80,000-120,000 / € 11,000-16,000



1114





1115

1115 ©
BERNT

b. 1937

A pair of Brazilian rosewood stools. Seats with woven cane. Designed 1957. These examples made approx. 1975-1980 by cabinetmaker Wørts. H. 41 cm. W./L. 45 cm. (2)
Model designed for Kunsthåndværkets Prisopgave 1957 and presented at The Copenhagen Cabinetmakers' Guild Exhibition at Designmuseum Danmark, 1958.

Literature: Grete Jalk [ed.]: "40 Years of Danish Furniture Design", vol. 4, p. 74-75.

Literature: Bernt and Arkitektens forlag [red.]: "Møbel & rum", ill. p. 188-189. DKK 30,000 / € 4,000



1116



1117

1116

WILLIAM WATTING

Nut wood coffee table, top with partly raised edge. Round legs with diagonal and cross stretchers, brass shoes and cross fitting. This example made 1940-1950s by cabinetmaker Mikael Laursen. H. 57 cm. W. 75 cm. L. 130 cm. *DKK 20,000 / € 2,700*

1117

High back easy chair with square legs and edges of Cuban mahogany. Sides, seat and back upholstered with light fabric. Made 1930-1940s.

DKK 30,000 / € 4,050



1118

1118

PETER HVIDT

b. Copenhagen 1916, d. s.p. 1986

ORLA MØLGAARD-NIELSEN

b. Ålborg 1907, d. Hellerup 1993

A teak sideboard and matching bookcase with brass fittings. Front with resp. tambour door and five drawers, and cabinet, shelves and fold-down writing leaf. Model 309a and 325. Designed 1956. These examples manufactured 1955-1960 by Søborg Møbler. Sideboard: H. 86,5 cm. W. 135 cm. D. 48 cm. Bookcase: H. 82 cm. W. 135 cm. D. 30,5 cm. (2)

DKK 20,000-25,000 / € 2,700-3,350





1119 ^{CD} ©

KAJ GOTTLÖB

b. Copenhagen 1887, d. 1976

Very rare and exceptional freestanding bar cabinet on tall Brazilian rosewood legs. Body of cabinet with sloping sides decorated with drop shaped inlays of blonde and dark Brazilian rosewood and ebony. Front with fold down leaf, behind which bar interior of lemon wood with shelves and holders. Brass fittings. Designed 1951. Made approx. 1951 by cabinetmaker A.J. Iversen. H. 124 cm. L. 99,5 cm. W. 40 cm.

Model presented at The Copenhagen Cabinetmakers' Guild Exhibition at Designmuseum Danmark, 1951.

Literature: Grete Jalk [ed.]: "40 Years of Danish Furniture Design", vol. 3, p. 177.

This cabinet is one of only two known examples of this model. DKK 250,000-300,000 / € 33,500-40,500





1119



1120

1120

KAARE KLINT

b. Frederiksberg 1888, d. Copenhagen 1954

"The Red Chair". A set of six armchairs with profiled mahogany frame. Seat and back upholstered with natural leather. Model 3758 A. Designed 1930. These examples made 1960-1970s by Rud. Rasmussen Cabinetmakers. (6)
Literature: Gorm Harkær, Klintiana: "Kaare Klint", vol. 2, ill. and mentioned pp. 82-84. DKK 25,000-30,000 / € 3,350-4,050



1121

1121
MÄRTA MÅÅS-FJETERSTRÖM

b. 1873, d. 1941

"Ljusa plador". A very large exceptional handwoven wool carpet in "rölakan" flat weave technique, light base with polychrome geometrical pattern. Signed monogram MMF. Designed 1933. This example made 1933 by Märta Måås-Fjetterström AB, Sweden. 490 x 298 cm.

Provenance: Made to order in 1933 by present owner.

DKK 250,000 / € 33,500







1122



1122

POUL HENNINGSEN

b. Ordrup 1894, d. Hillerød 1967

"PH-2/2". Rare adjustable piano lamp with frame, switch house and socket house of browned brass, with yellow/frosted glass shades. This example manufactured 1931 by Louis Poulsen. H. max. 33 cm. L. 50 cm.

Literature: "Light Years Ahead", referred and ill. p. 186.

DKK 200,000 / € 27,000



1123

1123

MÄRTA MÅÅS-FJETTERSTRÖM

b. 1873, d. 1941

"Knorren". Handwoven wool carpet in "rölakan" flat weave technique, blue and brown striped base with polychrome lines and swirl patterns in between, red border. Signed monogram MMF. Designed 1933. This example made before 1941 by Märta Måås-Fjetterström AB, Sweden. 246 x 151 cm.

DKK 40,000 / € 5,350



NIELS VOUDER
DANMARK
KØBENHAVN

1124

FINN JUHL

b. Frederiksberg 1912, d. Ordrup 1989

"The Egyptian Chair". Set of six teak chairs. Seat and back upholstered with light grey wool. Designed 1949. These examples made approx. 1970 by cabinetmaker Niels Vodder, stamped by maker. (6)

Literature: Grete Jalk [ed.]: "40 Years of Danish Furniture Design", vol. 3, ill. p. 125.

DKK 75,000-100,000 / € 10,000-13,500



1125

FINN JUHL

b. Frederiksberg 1912, d. Ordrup 1989

"The Egyptian Chair". Set of six teak chairs. Seat and back upholstered with light blue wool. Designed 1949. These examples made approx. 1970 by cabinetmaker Niels Vodder, stamped by maker. (6)

Literature: Grete Jalk [ed.]: "40 Years of Danish Furniture Design", vol. 3, ill. p. 125.

DKK 75,000-100,000 / € 10,000-13,500



1125

1126

FINN JUHL

b. Frederiksberg 1912, d. Ordrup 1989

"Judas Table". Oval teak dining table with extension and two extra leaves. Top and leaves with circular silver inlays. This example made approx. 1970 by cabinetmaker Niels Vodder. H. 72 cm. L. 181/236/291 cm. W. 120 cm. (3)

DKK 125,000 / € 17,000



1126



1127

FINN JUHL

b. Frederiksberg 1912, d. Ordrup 1989

"Chieftain Sofa". Two seater mahogany sofa. Seat, armrests and back upholstered with black leather, back fitted with buttons. Designed 1949. This example made 1990s by cabinetmaker Niels Roth Andersen, stamped by maker. L. 146 cm. *DKK 300,000 / € 40,500*



1127



1128

FINN JUHL

b. Frederiksberg 1912, d. Ordrup 1989

"Chieftain Chair". A pair of mahogany easy chairs. Seat, armrests and back upholstered with black leather, back fitted with buttons. Designed 1949. These examples made 1990s by cabinetmaker Niels Roth Andersen, stamped by maker. (2)

DKK 200,000 / € 27,000



1128



1129

ARNE JACOBSEN

b. Copenhagen 1902, d. s.p. 1971

"The Swan". Easy chair with frame of steam bent, laminated teak. Sides, seat and back upholstered with red wool. Model 4325. Designed 1960. This example manufactured 1960s by Fritz Hansen, stamped.

Literature: Carsten Thau and Kjeld Vindum: "Jacobsen", referred to and ill. pp. 469-470.

Literature: Noritsugu Oda: "Danish Chairs", 1999, referred to and ill. p. 62. DKK 20,000 / € 2,700



1129

1130

HANS J. WEGNER

b. Tønder 1914, d. Gentofte 2007

Circular teak coffee table with legs of chromed steel. This example manufactured 1950s by cabinetmaker Andr. Tuck, stamped by maker. H. 38 cm. Diam. 110 cm.

DKK 15,000-20,000 / € 2,000-2,700



1130



1131

1131
ANNA MARIA HOKE

b. 1911, d. 1996

Handwoven wool carpet in "rölakan" flat weave technique, decorated with polychrome geometrical patterns. Signed SKLH. A.M. Hoke 1961. This example made 1961 by Södra Kalmar Läns Hemslöjd, Sweden. 309 x 193 cm.

DKK 100,000 / € 13,500



1132

1132
BERIT KOENIG

"Viggen". Handwoven wool carpet woven in "tapestry" flat weave technique, base with zig-zag pattern in light and grey with purple and blue decorations, brown border. Signed SH and monogram BK. This example made approx. 1950s by Svensk Hemslöjd, Sweden. 256 x 194 cm.

DKK 40,000 / € 5,400

1133

POUL KJÆRHOLM

b. Østervrå 1929, d. Hillerød 1980

A rare, solid Oregon pine flat file cabinet. Front with 10 drawers, each with two handles of plywood. Frame of grey painted metal. Designed 1955. This example made approx. mid 1980s by PP Møbler. H. 95 cm. W. 106 cm. D. 75 cm.

Provenance: Artist Mogens Andersen, who was friends with Ejnar Pedersen, founder of PP Møbler.

The flat file cabinet was made in several versions. This version has 10 drawers in front, without the two dividers which otherwise separate the front of the nine

drawer version into three sections. Verified by Krestine Kjærholm & Thomas Kjærholm.

The bottom of the drawers are led through the solid Oregon pine fronts and carved to form the handles.

The model was designed for the School of Architecture at the Royal Danish Academy of Fine Arts. The flat file solid Oregon pine cabinet was reserved for use by professors only.

Literature: Michael Sheridan: "Poul Kjærholm furniture architect", Louisiana, ill.

DKK 120,000-150,000 / € 16,000-20,000



1133



1134

1134

POUL KJÆRHOLM

b. Østervrå 1929, d. Hillerød 1980

"PK 31/2". Freestanding two seater sofa with chromed steel frame. Sides, back and loose cushions in seat and back upholstered with original black leather. Designed 1958. This example manufactured approx. 1960s by E. Kold Christensen, stamped by maker. L. 138 cm.

DKK 25,000-30,000 / € 3,350-4,050

1135

POUL KJÆRHOLM

b. Østervrå 1929, d. Hillerød 1980

"PK 71". Set of three nesting tables with steel frame. Square tops of white perspex. Designed 1957. These examples manufactured late 1960s by E. Kold Christensen. H. 28,5 cm. W./L. 28,5 cm. (3)
Provenance: Upholsterer Ivan Schlechter, bought 1969.

Ivan Schlechter worked for E. Kold Christensen as an upholsterer and worked closely together with Poul Kjærholm. DKK 12,000-15,000 / € 1,600-2,000



1135

1136

A Moroccan wool tribal carpet from the Beni Ouarain tribe. White base with black pattern. This example made approx. 2000. 363 x 292 cm.

The nomadic Beni Ouarain tribe journey through the Rif mountains in north east Morocco from the end of March to the beginning of October. The tribe use wool from Olit Izmeh sheep and it takes several months to weave the carpets. The weaving is a very spiritual process for the Beni Ouarain people.

DKK 25,000-30,000 / € 3,350-4,000

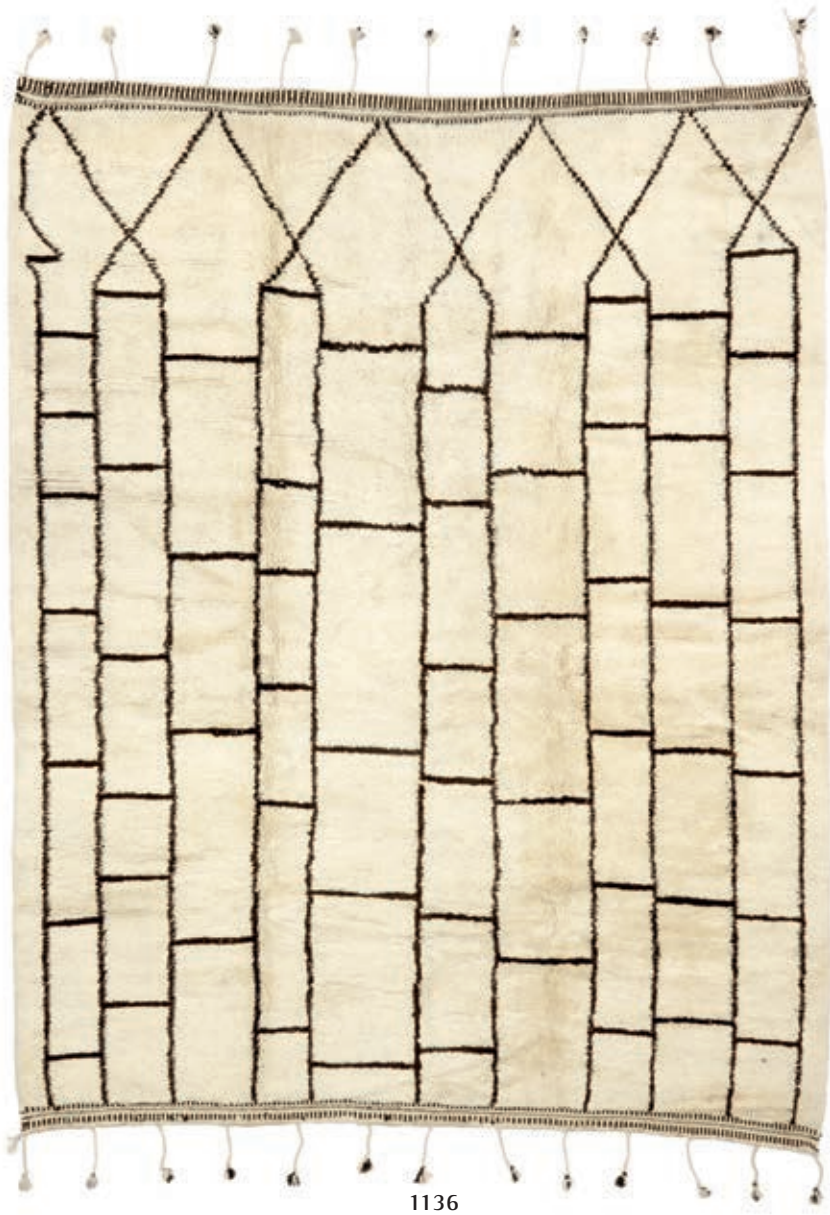
1137

POUL KJÆRHOLM

b. Østervrå 1929, d. Hillerød 1980

"PK 31/3". Freestanding three seater sofa with chromed steel frame. Sides, back and loose cushions upholstered with original black leather. Designed 1958. This example manufactured approx. 1960s by E. Kold Christensen, stamped by maker. L. 198 cm.

DKK 30,000-40,000 / € 4,050-5,400



1136



1137





1138

POUL KJÆRHOLM

b. Østervrå 1929, d. Hillerød 1980

"PK 80". Daybed with chromed steel frame, board of grey painted wood. Loose mattress upholstered with original black leather fitted with buttons, leather stamped monogram IS. Designed 1957. This example manufactured early 1980s by E. Kold Christensen. L. 190 cm.

Provenance: Upholsterer Ivan Schlechter.

Ivan Schlechter worked for E. Kold Christensen as an upholsterer and worked closely together with Poul Kjærholm. When Fritz Hansen took over the production and sale from E. Kold Christensen in 1982, this present mattress was used as an example of how the mattresses were to be made and stitched together. This mattress is embossed on the reverse with the owner's initials "I.S."

DKK 200,000 / € 27,000



1138



1139

1139

IRMA KRONLUND

Handwoven wool carpet in "rölakan" flat weave technique, grid pattern in shades of blue and grey. Signed KLH and monogram IK. This example made approx. 1950s by Kristianstad/Kronobergs Läns Hemslöjd, Sweden. 239 x 148 cm.

DKK 40,000-50,000 / € 5,400-6,700



1140



1141

1140

ARNE JACOBSEN

b. Copenhagen 1902, d. s.p. 1971

Unique wall mounted desk / console with chromed steel frame. Top of Wengé. Made to order approx. 1960s by Asmussen & Weber. H. 71 cm. D. 60 cm. L. 170 cm.

Made as part of the original interior in one of the "Atrium" houses at Bellevue, Klampenborg, Denmark. The "Atrium" houses by Arne Jacobsen were constructed in 1960. In 1986 the "Atrium" houses were classified as a listed / protected building as a component in the Arne Jacobsen Bellevue complex.

The console has been in its original setting until now.

DKK 20,000-25,000 / € 2,700-3,350

1141

ARNE JACOBSEN

b. Copenhagen 1902, d. s.p. 1971

Unique desk with chromed steel frame. Top of Wengé, front with drawer in left side. Made to order approx. 1960s by Asmussen & Weber. H. 72,5 cm. D. 61,5 cm. L. 136,5 cm.

Made as part of the original interior in one of the "Atrium" houses at Bellevue, Klampenborg, Denmark. The "Atrium" houses by Arne Jacobsen were constructed in 1960. In 1986 the "Atrium" houses were classified as a listed / protected building as a component in the Arne Jacobsen Bellevue complex.

The desk has been in its original setting until now.

DKK 60,000-80,000 / € 8,050-11,000



1142

1142
ARNE JACOBSEN

b. Copenhagen 1902, d. s.p. 1971

"Rover". Rare easy chair with collapsible "jigsaw puzzle" frame of black stained ash plywood. Seat, back and armrests upholstered with patinated brown leather. Designed approx. 1968. Probably manufactured approx. 1970 by Asko, Finland. *The "Rover" chair is one of the least known chairs designed by Arne Jacobsen. The chair can be seen as Arne Jacobsen's attempt to combine the easy transport of a classic, collapsible "Safari" chair with the comfort of the overstuffed easy chair arrayed in a distinct 1960-1970s look.*

Literature: Felix Solaguren-Beascoa: "Jacobsen", ill. p. 137.

DKK 20,000-25,000 / € 2,700-3,350



1143

1143
ARNE JACOBSEN

b. Copenhagen 1902, d. s.p. 1971

"Rover". Rare easy chair with collapsible "jigsaw puzzle" frame of black stained ash plywood. Seat, back and armrests upholstered with white Flokati wool. Designed approx. 1968. Probably manufactured approx. 1970 by Asko, Finland.

Literature: Felix Solaguren-Beascoa: "Jacobsen", ill. p. 137.

DKK 20,000-25,000 / € 2,700-3,350



1144

1144 ©

BODIL KJÆR

b. Hatting 1932

Freestanding Brazilian rosewood desk with chromed steel frame. Top with four integrated drawers in rail. Designed 1959. This example manufactured approx. 1960-1970s by E. Pedersen & Søn, with maker's paper label. H. 72,5 cm. W. 91,5 cm. L. 184 cm.

DKK 60,000-80,000 / € 8,050-11,000

1145

ARNE JACOBSEN

b. Copenhagen 1902, d. s.p. 1971

"The Egg Chair". Early easy chair with profiled aluminum base. Sides, back and loose seat cushion upholstered with original, patinated cognac coloured leather. Model 3317. Designed 1958. This example manufactured 1964 by Fritz Hansen, with maker's label.

Provenance: Bought by present owner in 1964 at Illums Bolighus. DKK 60,000-80,000 / € 8,050-11,000



1145



1146

1146
ESKILD PONTOPPIDAN

b. 1933

A solid teak dining table with four extension leaves, brass fittings. Designed 1958. This example made 1958-1960s by cabinetmaker Ludvig Pontoppidan. H. 72 cm. L. 120./340 cm. W. 90 cm.

Literature: Grete Jalk [ed.]: "40 Years of Danish Furniture Design", vol. 4, p. 59.

DKK 20,000-25,000 / € 2,700-3,350



1147



1148



1147

CHARLOTTE PERRIAND

b. Paris 1903, d. s.p. 1999

"Les Arcs". A set of four chairs with chromed steel tube frame. Seat and back with patinated cognac coloured leather, fitted with metal nails. Designed 1960s. These examples made approx. 1972, stamped. (4)

Model designed for the interior decoration of the Les Arcs ski resort in Savoie, France.

DKK 20,000-25,000 / € 2,700-3,350

1148

HANS J. WEGNER

b. Tønder 1914, d. Gentofte 2007

"FH 1936". A pair of easy chairs with beech frame. Shell-shaped seat and back of steam bent, laminated teak. Designed 1948. These examples manufactured 1950s by Fritz Hansen, one chair stamped. (2)

DKK 40,000 / € 5,400

1149

BØRGE MOGENSEN

b. Aalborg 1914, d. Gentofte 1972

A pair of patinated oak chests of drawers, each front with eight drawers, fitted with special brass handles. Model A 234. These examples manufactured 1960s by C.M. Madsen for FDB. H. 93,5 cm. W. 122 cm. D. 44,5 cm.

Literature: FDB catalogue 1964-65, p. 38.

DKK 30,000-40,000 / € 4,050-5,400

1150

FINN JUHL

b. Frederiksberg 1912, d. Ordrup 1989

Tall teak cabinet with beech frame with small teak "shoes", top with raised edges. Front with three doors and one pull-out leaf. Interior with adjustable shelves and trays. This example manufactured 1950s by Bovirke. H. 157 cm. W. 103 cm. D. 44 cm.

Litteratur: Dansk Kunsthåndværk 25. årgang 1952, s 64. DKK 20,000 / € 2,700



1149

1151 *

HANS J. WEGNER

b. Tønder 1914, d. Gentofte 2007

"JH 539". A patinated oak stool mounted on round, tapering legs. Seat with woven cane. Designed 1954. This example made 1960s by cabinetmaker Johannes Hansen, with maker's metal plaque. L. 66 cm.

Model presented at the Copenhagen Cabinetmakers' 400th anniversary exhibition in Forum 1954.

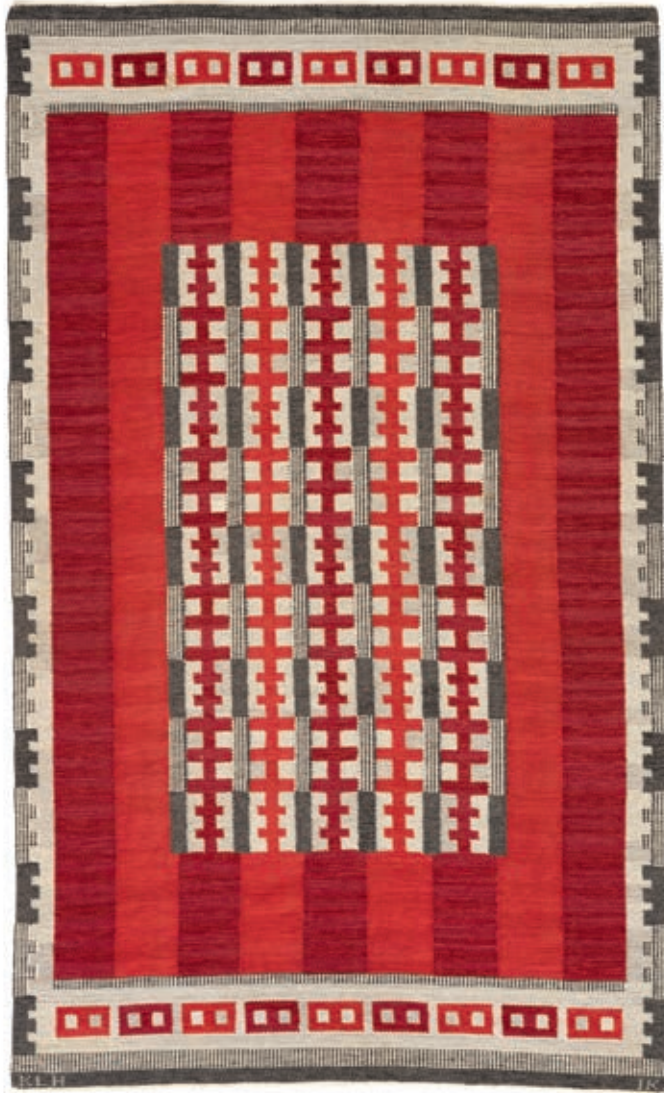
Literature: Grete Jalk [ed.]. "40 Years of Danish Furniture Design", Vol. 3, pp. 280-281. DKK 20,000 / € 2,700



1150



1151



1152

1152

IRMA KRONLUND

Handwoven wool carpet in "rölakan" flat weave technique, light base with geometrical patterns in shades of red and grey. Signed KLH and monogram IK. This example made approx. 1950s by Kristianstad/Kronobergs Läns Hemslöjd, Sweden. 243 x 145 cm.

DKK 40,000 / € 5,400

1153 ©

EINAR BARNES

b. Talvik 1908, d. Oslo 1985

"Oval". Six oval shaped wastepaper baskets, three of laminated, moulded Brazilian rosewood and three of laminated, moulded teak. Handles and sides of resp. mahogany, beech and Brazilian rosewood. Designed 1969. These examples manufactured 1970s by Heggen, Norway, stamped. H. 44,5 cm. W. 39 cm. (6)

Consisting of:

1 teak with mahogany handles/sides.

2 teak with beech handles/sides.

3 Brazilian rosewood with Brazilian rosewood handles/sides.

DKK 20,000-30,000 / € 2,700-4,050



1153

1154 ©

HANS J. WEGNER

b. Tønder 1914, d. Gentofte 2007

"Papa Bear". Wingback easy chair with Brazilian rosewood "nails" and stained beech legs, stool with stained oak legs and handles. Sides, back, seat and stool upholstered with dark blue "Kvadrat" wool, back fitted with buttons. Model AP 19 and AP 29. Designed 1951. These examples manufactured 1960s by AP-Stolen. (2)

Model presented at the exhibition "Tidens Møbler" in Forum 1952.

Literature: Johan Møller Nielsen, "Wegner en dansk Møbelkunstner", 1965, p. 70.

DKK 50,000-60,000 / € 6,700-8,050



1154



1155



1156

1155

HANS J. WEGNER

b. Tønder 1914, d. Gentofte 2007

"PP 90". A set of four rare ash wood folding chairs, armrest of natural leather straps. Designed 1976. These examples manufactured approx. 1976 by PP Møbler, with maker's label. (4)

DKK 25,000-30,000 / € 3,350-4,000

1156

ISA FÖÖK

Handwoven wool carpet in "rölakan" flat weave technique with geometrical patterns in shades of green, brown, yellow and grey. Signed Vbn and monogram IF. This example made approx. 1950-1960s by Vävboden Visby, Sweden. 242 x 165 cm.

DKK 10,000 / € 1,350



1157

1157

HANS J. WEGNER

b. Tønder 1914, d. Gentofte 2007

"AT 304". Dining table mounted on oak cross-leg frame with brass stretchers. Teak top and fold-down leaves, brass fittings. This example manufactured 1950-1960s by Andreas Tuck, stamped by maker. H. 71,5 cm. L. 128./228 cm. W. 86 cm.

Presented at the exhibition "Købestævnet" in Fredericia 1950.

DKK 30,000 / € 4,050



1158

1158

HANS J. WEGNER

b. Tønder 1914, d. Gentofte 2007

Two wall mounted teak cabinets, one small and one long with round, carved handles. Oak interior, brass fittings. These examples made 1950s by cabinetmaker Johannes Hansen. H. 63 cm. D. 30 cm. L. 81. and 229 cm. (2)

DKK 25,000-30,000 / € 3,350-4,050



1159



1159

HANS J. WEGNER

b. Tønder 1914, d. Gentofte 2007

Three wall mounted teak sections, top with raised back edge. Two cabinets with each two doors in front and a long sideboard with two sliding doors. Cabinet's interior with shelves, sideboard with built in record player and storage compartments. Round, carved handles and brass fittings. These examples made 1950s by cabinetmaker Johannes Hansen. Cabinets: H. 50 cm. W. 84 cm. D. 48 cm. Sideboard: H. 50 cm. L. 128 cm. D. 40 cm. (3)

DKK 30,000-40,000 / € 4,050-5,400



1159



1160

1160 *
KAARE KLINT

b. Frederiksberg 1888, d. Copenhagen 1954

"The Red Chair". A set of eight chairs with profiled cherry frame. Seat and back upholstered with light brown coloured leather. Model 47510. Designed 1930. These examples made 2007 by Rud. Rasmussen Cabinetmakers. (8)

Literature: Gorm Harkær, Klintiana: "Kaare Klint", vol. 2, ill. and mentioned pp. 82-84.

DKK 30,000-40,000 / € 4,050-5,400

1161 *
KAARE KLINT

b. Frederiksberg 1888, d. Copenhagen 1954

Large cherry conference table with profiled edges and legs. Consisting of three square tables and a pair of D-ends. Brass fittings. This example made 2007 by Rud. Rasmussen Cabinetmakers, with maker's paper label. H. 73,5 cm. W. 146 cm. Square tables: L./W. 146 cm. D-ends: L. 73 cm. Total. L. 584 cm. (5)

Label no. 53058.

DKK 20,000-30,000 / € 2,700-4,050



1161



1162

1162 *

KAARE KLINT

b. Frederiksberg 1888, d. Copenhagen 1954

"The Red Chair". A set of six chairs with profiled cherry frame. Seat and back upholstered with light brown coloured leather. Model 47510. Designed 1930. These examples made 2007 by Rud. Rasmussen Cabinetmakers. (6)

Literature: Gorm Harkær, Klintiana: "Kaare Klint", vol. 2, ill. and mentioned pp. 82-84.

DKK 25,000-30,000 / € 3,350-4,050





1163



1164

**1163
KAARE KLINT**

b. Frederiksberg 1888, d. Copenhagen 1954

Freestanding two seater sofa with six-legged mahogany cross frame. Sides, seat and back upholstered with light brown coloured leather. Model 4118. Designed 1930. This example made approx. 1970-1980s by Rud. Rasmussen Cabinetmakers. L. 134 cm.

Sold at the request of the State Prosecutor for Serious Economic and International Crime Denmark.

Literature: Gorm Harkær, Klintiana: "Kaare Klint", vol. 2, p. 93. DKK 20,000-30,000 / € 2,700-4,050

**1164
SWEDISH DESIGN**

Handwoven wool carpet in "rölakan" flat weave technique, green base with geometrical pattern in yellow, lilac and orange. Signed SCE and on the reverse 1938. This example made 1938 in Sweden. 196 x 135 cm. DKK 30,000 / € 4,000



1165

1165 *
KAARE KLINT

b. Frederiksberg 1888, d. Copenhagen 1954

"The Red Chair". A set of four chairs with profiled mahogany frame. Seat and back upholstered with light brown coloured leather. Model 47510. Designed 1930. These examples made 2007 by Rud. Rasmussen Cabinetmakers. (4)

Literature: Gorm Harkær, Klintiana: "Kaare Klint", vol. 2, ill. and mentioned pp. 82-84.

DKK 20,000-25,000 / € 2,700-3,350

1166
KAARE KLINT

b. Frederiksberg 1888, d. Copenhagen 1954

Freestanding two seater sofa with six-legged mahogany cross frame. Sides, seat and back upholstered with light brown coloured leather. Model 4118. Designed 1930. This example made approx. 1970-1980s by Rud. Rasmussen Cabinetmakers. L. 134 cm.

Sold at the request of the State Prosecutor for Serious Economic and International Crime Denmark.

Literature: Gorm Harkær, Klintiana: "Kaare Klint", vol. 2, p. 93. DKK 20,000-30,000 / € 2,700-4,050



1166



1167

1167 *
NANNA DITZEL

b. Copenhagen 1923, d. s.p. 2005

Freestanding teak desk, front with four drawers in rail. Model 93-4. Designed 1955. This example manufactured approx. 1960s by Søren Willadsen. H. 72 cm. W. 75 cm. L. 175 cm.

DKK 25,000-30,000 / € 3,350-4,050



1168



1168 ©

PETER HVIDT

b. Copenhagen 1916, d. s.p. 1986

ORLA MØLGAARD-NIELSEN

b. Ålborg 1907, d. Hellerup 1993

Three seater sofa and a pair of matching easy chairs with Brazilian rosewood frame and runner legs. Loose cushions in seat and back upholstered with orange wool. Model 130. Designed 1961. These examples manufactured 1960s by France & Søn, with maker's metal tag. Sofa: L. 182 cm.

Literature: Mobilia 1961.

DKK 20,000-25,000 / € 2,700-3,350



1168



1169 ©

EJNER LARSEN

b. 1917, d. 1987

AKSEL BENDER MADSEN

b. 1916, d. 2000

Freestanding, narrow mahogany bureau with shoes and carved handles of Brazilian rosewood, brass fittings. Top with fold-out leaf covered with patinated natural leather, underneath which room for storage. Model 2084. Designed 1952. This example made 1950-1960s by cabinetmaker Willy Beck. H. 67-78 cm. L. 90 cm. D. 42/70 cm. *DKK 30,000 / € 4,050*

1170 ©

EJNER LARSEN

b. 1917, d. 1987

AKSEL BENDER MADSEN

b. 1916, d. 2000

A set of three small Brazilian rosewood side tables, hereof a pair of square tables and a slightly larger rectangular table. Designed approx. 1955. These examples made late 1950s by cabinetmaker Willy Beck, with maker's paper label. H. 41/43 cm. L. 27/43 cm. W. 27/28 cm. (3) *DKK 25,000 / € 3,350*



1171 ©

POUL M. VOLTHER

b. 1923, d. 2001

Armchair with Brazilian rosewood frame. Seat and back with patinated natural leather. Designed 1950. This example made 1950s by cabinetmaker Jørgen Wolff.

Model presented at The Copenhagen Cabinetmakers' Guild Exhibition at Designmuseum Danmark, 1950.

Literature: Grete Jalk [ed.]: "40 Years of Danish Furniture Design", vol. 3, p. 160-161. DKK 25,000 / € 3,350



1171



1172

1172

SWEDISH DESIGN

Handwoven wool carpet in "rölakan" flat weave technique, base with green, yellow and purple squares with grey and white stripes, brown border. Signed JHL. This example made by Jönköpings Läns Hemslöjd, Sweden 20th century. 191 x 124 cm. DKK 10,000 / € 1,350



1173

1173 ©

FINN JUHL

b. Frederiksberg 1912, d. Ordrup 1989

"FJ 46". A pair of Brazilian rosewood armchairs. Seat and back upholstered with striped blue wool. These examples made 1960s by cabinetmaker Niels Vodder, stamped by maker. (2) *DKK 100,000 / € 13,500*





1174

1174

FINN JUHL

b. Frederiksberg 1912, d. Ordrup 1989

A large bowl of solid teak. Stamped Design Finn Juhl, Teak. Made and stamped by Kay Bojesen, Denmark. H. max. 17 cm. W. 34 cm. L. 37 cm.

DKK 25,000-30,000 / € 3,350-4,050





1175 ©

FINN JUHL

b. Frederiksberg 1912, d. Ordrup 1989

"BO 101". A low Brazilian rosewood table/bench. Anodized steel frame and tall Brazilian rosewood shoes. Raised brass edges. Three original loose seat cushions included, upholstered with original yellow, orange and blue "Kvadrat" wool. Designed 1953. This example manufactured 1950-1960s by Bovirke. H. 40,5 cm. L. 183 cm. W. 45 cm.

Literature: Esbjørn Hiorth: "Arkitekten Finn Juhl", 1990, ill. pp. 56-57.

DKK 50,000 / € 6,700



1175



1176

1176

FINN JUHL

b. Frederiksberg 1912, d. Ordrup 1989

"FJ 40". A teak writing desk with tapering legs. Writing top with storage space underneath, three small compartments with lids and brass handles. This example made 1950s by cabinetmaker Niels Vodder. H. 74,5 cm. W. 66 cm. D. 65,5 cm.

DKK 25,000 / € 3,350

1177

OLE WANSCHER

b. Frederiksberg 1903, d. Charlottenlund 1985

Mahogany armchair with sweeping hind legs. Seat and back upholstered with patinated natural leather. Designed 1958. This example manufactured 1960-1970s by cabinetmaker A.J. Iversen.

Variant of model J2833 with upholstered back and armrest.

Model presented at The Copenhagen Cabinetmakers' Guild Exhibition at Designmuseum Danmark, 1958.

Literature: Grete Jalk [ed.]: "40 Years of Danish Furniture Design", vol. 4, p. 57.

DKK 15,000-20,000 / € 2,000-2,700



1177



1178

1178
FINN JUHL

b. Frederiksberg 1912, d. Ordrup 1989

"FJ 45". A teak easy chair. Sides, back and loose seat cushion upholstered with turquoise wool, natural leather edgings. Designed 1945. This example made 1950s by cabinetmaker Niels Vodder.

DKK 60,000 / € 8,050



1179

1179
DITTE HEATH

b. 1923, d. 2004

A pair of patinated oak arm chairs. Seat and back with patinated brown leather. Model J 102. These examples manufactured approx. 1960s for FDB. (2)
DKK 20,000 / € 2,700

1180 *
ARNE VODDER

b. 1926, d. 2009

Coffee table with six-legged beech frame. Teak top with raised edges, underlying shelf and "shoes" of teak. This example made 1950s by cabinetmaker Winther for Bovirke. H. 56 cm. L. 98 cm. W. 78 cm.
DKK 20,000 / € 2,700



1180



1181

1181
ARNE VODDER

b. 1926, d. 2009

Chaise longue with beech frame. Seat and back with woven straps of patinated natural leather. Mounted with small triangular teak side table with slightly raised edge, on brass stretcher. This example manufactured 1950s by Bovirke. L. 148 cm.

Literature: The magazine "Møbler" no. 6 1954, p. 46

DKK 60,000 / € 8,050



1182



1182 ©

IB KOFOD - LARSEN

b. 1921, d. 2003

"Elizabeth". Easy chair with Brazilian rosewood frame. Sides, back and loose seat cushion upholstered with original, patinated cognac coloured leather. Model U-56. Designed 1956. This example made 1960s by Christensen & Larsen Cabinetmakers, stamped by maker. *Model presented at The Copenhagen Cabinetmakers' Guild Exhibition at Designmuseum Danmark, 1958.*
Literature: Grete Jalk [ed.]: "40 Years of Danish Furniture Design", vol. 3, p. 48-49.

DKK 60,000-80,000 / € 8,050-11,000

1183

FINN JUHL

b. Frederiksberg 1912, d. Ordrup 1989

"BO 101". A low teak table/bench. Anodized steel frame and tall teak shoes. Raised brass edges. Designed 1953. This example manufactured 1950-1960s by Bovirke. H. 40 cm. L. 183 cm. W. 45 cm.
Literature: Esbjørn Hiorth: "Arkitekten Finn Juhl", 1990, ill. pp. 56-57.

DKK 30,000 / € 4,050



1183

INDEX

A

Aalto, Alvar	998, 999
Andersen, Just	1010, 1014, 1024
Andersen, Knud	1026
Andersen, Rigmor	1043
Andersen, Tage	1061
Arctander, Philip	1057

B

Bang, Arne	1011, 1016
Barnes, Einar	1153
Bender Madsen, Aksel	1169, 1170
Bernadotte, Sigvard	964, 965, 966 973, 985, 986
Bernt	1115
Bindesbøll, Thorvald	972, 976, 1021
Bloch, Kresten	1026
Bloch-Poulsen, Peder	1087
Bo, Jørgen	1031
Bojesen, Kay	961, 975, 982

C

Carlsson, Birgitta	996
Chihuly, Dale	995

D

Danish Cabinetmaker	1117
Dessau, Ingrid	1077, 1099, 1103
Ditzel, Nanna	1167

F

Finnish design	1052
Föök, Isa	1156

G

Gottlob, Kaj	1045, 1119
Gunnløgsson, Halldor	1066, 1082

H

Hansen, Fritz	1056
Hansen, Karl Gustav	962, 963
Heath, Ditte	1179
Henningsen, Frits	1042, 1054, 1105
Henningsen, Poul	1039, 1040, 1097 1098, 1106, 1122

Hoke, Anna Maria	1131
Hvidt, Peter	1069 1070, 1071, 1090 1091, 1118, 1168
Härkönen, Aappo	1030

J

Jacobsen, Arne	1046, 1049 1129, 1140, 1141 1142, 1143, 1145
Jalk, Grete	1114
Jensen, Georg	967, 969 970, 977, 984
Jensen, Niels	1088
Juhl, Finn	1034, 1035 1036, 1037, 1038 1124, 1125, 1126 1127, 1128, 1150 1173, 1174, 1175 1176, 1178, 1183

K

Kaipainen, Birger	997
Kindt-Larsen, Edvard	1053
Kindt-Larsen, Tove	1053
Kjær, Bodil	1109, 1144
Kjærholm, Hanne	1110
Kjærholm, Poul	1107, 1111, 1112 1113, 1133, 1134 1135, 1137, 1138
Klint, Kaare	1041, 1048 1073, 1093, 1095 1096, 1102, 1120 1160, 1161, 1162 1163, 1165, 1166
Koenig, Berit	1132
Kofod-Larsen, Ib	1182
Koppel, Henning	980
Kronlund, Irma	1139, 1152
Kyster, Holger	974
Kåge, Wilhelm	1027

L

Larsen, Ejner	1169, 1170
Lassen, Flemming	1059
Lassen, Mogens	1058
Ludvigsen, C. F.	1025

M

Magnussen, Erik	1025
Marinot, Maurice	993
Mies van der Rohe, Ludwig	1108
Mogensen, Børge	1055, 1083, 1149
Moos, Peder	1028, 1029
Måås-Fjetterström, Märta	1121, 1123
Mølgaard-Nielsen, Orla	1069 1070, 1071, 1090 1091, 1118, 1168

N

Nielsen, Harald	959, 960 978, 981, 987
Norwegian design	1062

P

Perriand, Charlotte	1147
Pontoppidan, Eskild	1146

R

Rasmussen, Rud.	1101
Rohde, Johan	968 971, 979, 988
Rydgren, Inga-Mi Varneus	1081

S

Salto, Axel	989, 990 991, 992, 1015 1017, 1018, 1019 1020, 1022, 1023
Sarpaneva, Timo	994
Schlegel, Frits	1050, 1051
Siesbye, Alev Ebüzziya	1000 1001, 1002, 1003 1004, 1005, 1006 1007, 1008, 1009

INDEX

Silow, Ingegerd	1060
Sjöqvist, Anna-Greta	1089
Skogh, Svante	1067
Stæhr-Nielsen, Olaf	983
Swedish design	1064
	1092, 1094, 1164, 1172
Svanström, Maj	1044

T

Theselius, Mats	1068
Thorsen, Ove	996

V

Vestergaard Jensen, Helge	
	1032, 1033
Vodder, Arne	1180, 1181
Volther, Poul M.	1171

W

Wanscher, Ole	1100, 1104, 1177
Watting, William	1116
Wegner, Hans J.	1046, 1047, 1063
	1072, 1074, 1075
	1076, 1078, 1079
	1080, 1084, 1085
	1086, 1130, 1148
	1151, 1154, 1155
	1157, 1158, 1159
Weiss, Per	1012
Willumsen, Bode	1013
Wormley, Edward	1065



ORIENTAL ART

International auction - 1 June 2016



*A large Chinese gilded and patinated bronze figure of an Immortal, Lao-zi. Ming 1368-1644. H. 64 cm.
Estimate: DKK 400,000-500,000 / € 54,000-67,000*



BRUUN RASMUSSEN

AUCTIONEERS OF FINE ART

ANTIQUES

International auction - 2 June 2016



*Hermann Ernst Freund: A pair of Danish mahogany armchairs in Pompeian style. 1830-1836.
Estimate: DKK 100,000 / € 13,500*



BRUUN RASMUSSEN
AUCTIONEERS OF FINE ART

JEWELLERY

International auction - 6 June 2016



A diamond ring.

Estimate: DKK 250,000 / € 33,500



BRUUN RASMUSSEN

AUCTIONEERS OF FINE ART

WATCHES

International auction - 6 June 2016



Breitling: A gentleman's wristwatch of steel. Model Duograph.

Estimate: DKK 50,000-60,000 / € 6,700-8,050



BRUUN RASMUSSEN

AUCTIONEERS OF FINE ART

COPENHAGEN PHOTO FESTIVAL

EVENT AUCTION

Contemporary photography at auction in Museumsbygningen,
Copenhagen 12 June at 4 pm





As a new event at this year's Copenhagen Photo Festival (2-12 June), Alexa Bruun Rasmussen will auction off photographic artwork from some of the festival exhibitions at a special auction on the last day of the festival, 12 June at 4 pm in Museumsbygningen in Copenhagen.

For more information about this auction or consignments for future photo auctions, please contact Christine Almlund at foto@bruun-rasmussen.dk or +45 8818 1216



CITES EXPORT PERMIT

Catalogue numbers marked with (©) are items covered by the Washington Convention. Items made or processed from 1947 and onwards are sold with a CITES certificate, which is valid within the EU. Items processed before 1947 do not require a CITES certificate for a sale within the EU. For export to countries outside the EU, a Danish CITES export permit is required for items processed both before and after 1947, and possibly also a corresponding import permit for the country, which the export of the item is intended for.

DISPATCH

Collection of purchases bought at traditional auctions must be no later than 2 weeks after the last auctionday.

Uncollected items will without further notice be sent into storage at the expense and risk of the buyer.

SALES RESULTS

Sales results from the latest auctions are available at our website: bruun-rasmussen.dk

PHOTO

Photos of all items are available at our website: bruun-rasmussen.dk

EURO

Bids and invoicing are made in DKK.

For the conversion from DKK into Euro, Bruun Rasmussen has used the official rate of exchange from Denmark's Nationalbank (the Danish National Bank) at the time of preparation of the catalogue.

The amount in Euro is, in Bruun Rasmussen's judgment, roughly adjusted to presentable figures.

CONDITION

Bruun Rasmussen draws attention to the fact that, as a rule, no information is provided regarding the condition of the lots (cf. conditions of purchase § 10).

However, we refer to our website: www.bruun-rasmussen.dk where information regarding condition, repairs, etc. can usually be found for the individual lot. Should this information be insufficient, further details can be obtained by contacting one of the experts of the department.

BANKERS

Danske Bank · Account: 30014310970638
IBAN: DK4130004310970638
Swift-BIC DABADKKK

BUSINESS REGISTRATION

CVR-nr. DK25472020

CITES EKSPORT TILLADELSE

Katalognumre markeret med (©) er effekter, der omfattes af Washingtonkonventionen. Effekter udført eller forarbejdet fra 1947 og frem sælges med CITES-certifikat gyldigt inden for EU. Effekter forarbejdet før 1947 kræver ikke CITES-certifikat før salg inden for EU. For udførsel til lande uden for EU kræves en dansk CITES-eksporttilladelse både for effekter udført før og efter 1947 samt muligvis en tilsvarende importtilladelse i det land, som effekten ønskes indført i.

AFHENTNING

Afhentning af effekter købt på traditionel auktion SKAL SKE senest 2 uger efter sidste auktionsdag.

Uafhentede effekter vil herefter uden yderligere varsel blive sendt til opbevaring for købers regning og risiko.

SALGSRESULTATER

Hammerslagspriser fra de seneste auktioner kan ses på vores hjemmeside: bruun-rasmussen.dk

FOTO

Fotos af alle effekter kan ses på vores hjemmeside: bruun-rasmussen.dk

EURO

Der bydes og faktureres i danske kroner.

Ved omregning fra DKK til Euro er anvendt Nationalbankens officielle valutakurs på tidspunktet for udarbejdelse af kataloget.

Beløbet i Euro er afrundet til et tal, der efter Bruun Rasmussens skøn fremtræder på en præsentabel måde i forhold til beløbet i DKK.

BEVARINGSTILSTAND

Bruun Rasmussen henleder opmærksomheden på, at katalognumrene som udgangspunkt ikke er forsynet med oplysninger om tilstand (jvf. købskonditionernes § 10). Vi henviser imidlertid til vores hjemmeside: www.bruun-rasmussen.dk, hvor der under det enkelte katalognummer ofte er oplysninger om bevaringstilstand, reparationer o. lign. Er disse oplysninger ikke tilstrækkelige kan én af afdelingens sagkyndige kontaktes for yderligere informationer.

BANKFORBINDELSE

Danske Bank · Konto: 30014310970638
IBAN: DK4130004310970638
Swift-BIC DABADKKK

VIRKSOMHEDSREGISTRERING

CVR-nr. DK25472020



FABERGÉ

Zarens hofjuvelér og forbindelsen
til den danske kongefamilie



13. maj - 25. september 2016

Oplev verdensberømt juvelérkunst fra kongefamiliens private hjem.
Værkerne er skabt af den russiske zars hofjuvelér Peter Carl Fabergé,
nedarvet gennem generationer i den danske kongefamilie og stadig i brug.

www.koldinghus.dk

CONDITIONS OF PURCHASE

§ 1. BIDDING

The buyer shall be the highest bidder at the "hammer price". Any person bidding on behalf of a third party shall be liable in surety for completion of the sale.

At the request of Bruun Rasmussen Kunstauktioner (hereinafter called Bruun Rasmussen), all bidders, whether they wish to make bids in person at the place of auction or commission bids by letter, fax or the homepage direct telephone bids or the homepage, should be able to document their ability to pay and be able to provide proof of identity at any time. Bruun Rasmussen is entitled to refuse to accept a bid if, when requested, adequate security or adequate payment on account has not been rendered.

Bids should be made by the bidder in person at the place of auction or by written commission by letter, fax or the homepage. For online auctions all bids are submitted via the homepage. Telephone bidding is possible within certain conditions made out by Bruun Rasmussen. Bruun Rasmussen is not to be held responsible for any errors that may occur using this service. The auctioneer shall have absolute discretion as to the increment of the bids. The auctioneer will also make decisions in all cases of doubt regarding the bidding.

Credit/debit card information must be registered with Bruun Rasmussen before bids can be submitted.

§ 2. PAYMENT

Purchases made at all Bruun Rasmussen traditional salesroom auctions are subject to a 30% fee (for wines, coins and stamps 25%), which covers 24% buyer's premium plus VAT of the premium.

Purchases made at all Bruun Rasmussen online auctions are subject to a 25% fee, which covers 20% buyer's premium and VAT of the premium.

Certain lots are sold in accordance with specific rules on normal VAT arrangement (hereinafter called normal VAT), so that the purchase price is the hammer price plus an additional 24% (for online auctions, wines, coins and stamps 20%) in buyer's premium and VAT of 25% levied on both the hammer price and the buyer's premium. The lots subject to Full VAT are indicated as such in the catalogue and on the homepage with an asterisk (*).

Danish VAT registered buyers shall provide Bruun Rasmussen with documentation of their SE-/CVR -number (VAT No.) as this has to be quoted on the invoice for goods bought at full VAT.

For some foreign buyers, specific VAT-exemption rules apply (cf. Article 3). VAT-exemption does not apply to private buyers from the EU who are considered as Danish buyers (cf. current Danish legislation on Special VAT Scheme for Sales of Works of Art, Collectors' items and Antiques by Public Auction).

The purchase price falls due for payment when the goods have been knocked down. Payment may be made in cash up to DKK 50,000, by Dankort, banker's cheque, traveller's cheque, Visa-, Master-, Diners Club- or Eurocard. Personal foreign cheques may only be used for payment by prior arrangement.

At traditional auctions payment for purchased items must be made during or immediately after the auction. Under all circumstances payment must be made no later than eight days from the date of the invoice. With online auctions, payment automatically takes place when the items are prepared for dispatch (circa 12 hours after the purchase has been made) using the credit/debit card details submitted by the purchaser. At the same time an invoice and dispatch information will be sent to the purchaser.

Should the purchase price not be paid by the due date, interest at 1.5 % per new month will be charged.

If the purchase price and interest are not paid within eight days after Bruun Rasmussen has sent its demand to the buyer, Bruun Rasmussen shall be entitled to rescind the sale and resell the goods at a Bruun Rasmussen auction or privately, and to demand reimbursement of any related losses from the defaulting

buyer. Any further profit on the sale shall be payable to the person who had deposited the goods for sale by auction.

If the defaulting buyer is entitled to proceeds from a sale of goods by Bruun Rasmussen, Bruun Rasmussen shall be entitled to set off its receivables against its payables to the defaulting buyer.

If the defaulting buyer has deposited other goods for sale, Bruun Rasmussen shall be entitled to sell such goods at a Bruun

Rasmussen auction without being bound by the reserve stipulated by the defaulting buyer. The defaulting buyer shall not be entitled to demand the surrender of goods deposited for sale as long as the debt payable to Bruun Rasmussen has not been discharged, regardless of whether the value of such goods may be deemed to exceed the debt payable.

Bruun Rasmussen shall be entitled to refuse a bid made by a buyer who is in default in respect to his payment obligations to Bruun Rasmussen, as well as a bid made by a third party on behalf of such a defaulting buyer. Bruun Rasmussen shall further be entitled to demand a deposit as a condition of accepting any future bids from such a purchaser.

§ 3. MONEY-BACK GUARANTEE

A. Purchases made on all traditional salesroom auctions are unconditional and can not be cancelled regardless of the type of bid such as absentee web bid, live-bidding or otherwise.

B. Online purchase of items by private individuals is subject to Danish consumer law, which extends 14 days of money-back guarantee. The purchaser is liable for any costs related to the transport of returned items.

Should a purchaser seek to avail himself or herself of the money-back guarantee, Bruun Rasmussen will refund the payment on receiving the returned items. Please note that the date on which accounts are debited is subject to the policy of the purchaser's bank/credit card company.

§ 4. EXEMPTION FROM VAT

Foreign buyers who meet the following conditions pay the applicable auction fees, cf. above, but are not charged Danish VAT. However, the Danish VAT must be deposited at Bruun Rasmussen until documentation has been provided to show that the goods have been exported as required by law.

A. Buyers who are VAT-registered in another EU country are exempt from paying Danish VAT when it can be documented that the item purchased has been transported to the address declared by the buyer to Bruun Rasmussen and specified on the invoice. In such cases, VAT must be settled in accordance with the rules in force in the country where the company is VAT-registered. It is advisable to check with the relevant local authorities.

B. Buyers domiciled outside the EU may be exempt from Danish VAT when it can be documented that the purchase has been transported out of the EU. As far as possible, Bruun Rasmussen issues the necessary export documents to be presented to the customs authorities, and reserves the right to charge a fee for doing so.

If the goods are being exported by a freight forwarder authorised by Bruun Rasmussen, the VAT need not be deposited. See the list of approved freight forwarders

§ 5. PAYMENT OF TAXES AND DUTIES

A. VAT-registered businesses in other EU Member States may opt out of exercising the option of VAT exemption and instead pay Danish VAT on second-hand goods/full VAT. Bruun Rasmussen must be informed of this before 10 am on the day after the purchase.

B. VAT-registered businesses in Denmark may choose to pay full VAT, cf. above. Bruun Rasmussen must be informed of this before 10 am on the day after the purchase.

§ 6. COLLECTION OF PURCHASES

The purchase price must be paid in full before the purchased lot can be passed over to the buyer. From the time of the lot being knocked down to the buyer, until its collection, the purchased lot will be held at the buyer's own expense and risk.

A storage fee will be charged for lots which have not been collected according to agreement. Lots which have been paid for but not collected will be stored at buyers expense. Lots not collected within 1 year will be resold at auction or privately at the buyer's expense.

§ 7. DISPATCH

Should Bruun Rasmussen undertake the packaging and forwarding of purchased goods, this shall be done at the buyer's own expense and risk. Bruun Rasmussen shall thus not be held liable neither for any damage caused to purchased goods during dispatch nor for any missing consignments.

§ 8. DROIT DE SUITE

In accordance with Danish copyright law, an additional royalty fee is to be paid for the purchase of works by contemporary Danish artist and some international artists who are either still alive or who have been dead for less than 70 years. The additional royalty fee will be collected by Bruun Rasmussen on behalf of Copydan, which is a Danish-based joint collecting society. Such works are marked with (CD) for Copydan next to the lot number.

The Copydan royalty fee is added to the auction price including the buyer's premium when the total exceeds €300.

Copydan royalty fees:

- 5% of the auction price and buyer's premium (excluding VAT) totalling up to €50,000.
- 3% of the auction price and buyer's premium (excluding VAT) of totals between €50,000 and €200,000.
- 1% of the auction price and buyer's premium (excluding VAT) of totals between €200,000 and €350,000.
- 0.5% of the auction price and buyer's premium (excluding VAT) of totals between €350,000 and €500,000.
- 0.25% of the auction price and buyer's premium (excluding VAT) of totals above €500,000.

Copydan royalties must not exceed €12,500 for an individual artwork.

The euro exchange rate has been set by Copydan for 2016 at DKK 746,02 per €100.

§ 9. EXPORT LICENCE

Applications for an export licence must be made to the Danish Cultural Assets Committee when required in accordance with current Danish legislation on the protection and preservation of cultural assets in Denmark. Where such a licence has not been obtained, the foreign buyer will be informed thereof immediately after the lot has been knocked down to the buyer. Another application will subsequently be sent to the Danish Cultural Assets Committee by Bruun Rasmussen on behalf of the buyer, now that the price is known. Should an export licence not be granted, the Danish Cultural Assets Committee would be obliged to acquire the purchased lot at the purchase price, and the buyer would thus not be bound to the purchase.

§ 10. DESCRIPTION OF LOTS

All lots are sold in the condition in which they are found when knocked down and as described in the catalogue and on the homepage with subsequently published changes and modifications. Description is done according to the best of Bruun Rasmussen's knowledge and on the cataloguing principles stated.

The lots auctioned are often of some age or of a kind which makes it possible that they may contain defects, deficiencies, or may have been subject to restoration or damage not necessarily stated in the catalogue and on the homepage. Pictures are for identification only and cannot be used for an evaluation of the condition of the goods.

Any person who wishes to bid at an auction should therefore satisfy himself of the condition of the lots for which he intends to bid by personal inspection at the preview held prior to the auction. The description is an indication of the prevailing opinion of scholars and expert at the time of the sale. If any doubts should

arise after the purchase regarding the genuineness of the purchased lot or its conformance with the description, Bruun Rasmussen should immediately be informed thereof.

Should the purchased lot be proved to be a forgery, or if the description contains material errors which lead to a considerably higher hammer price than that which a correct description would presumably result in, the buyer shall be entitled to cancel the purchase, after which the buyer shall be reimbursed for the total purchase price paid plus buyer's premium and VAT, when applicable.

For material errors in the description in respect to measurements or weight, compensation shall only be paid on a percentage basis in proportion to the difference.

The right of cancellation of a purchase in pursuance of the present conditions can only be exercised by the party who has bought the lot in question at Bruun Rasmussen and shall be subject to the presentation of a claim for cancellation in writing to Bruun Rasmussen within 2 years of the purchase date and to the purchased lot being returned to Bruun Rasmussen in the same condition in any and all respects which the purchased lot was in at the time of the lot being knocked down to the buyer.

In the event of cancellation the buyer shall not be entitled to claim payment of interest on the purchase price nor shall the buyer be entitled to claim compensation for any other expenses or loss incurred, including any possible loss of profit in connection with reselling.

It shall not be possible to state cancellation of a purchase in pursuance of the above provisions if:

- a the description on the day the lot was knocked down to the buyer was in accordance with the then generally accepted opinion of scholars and experts;
- b the only way of establishing whether the lot was a forgery at the time of the sale was the implementation of scientific processes, the validity of which was only acknowledged after the time of the sale, or which would have required a disproportionate amount of cost, or which would have been impossible to carry out without damaging the lot in question.

In addition to the time-limits stated above, all purchases are subject to the Statute of Limitations stipulated by Danish law by which Bruun Rasmussen is under no circumstance liable for purchases after 5 years from the date of purchase.

Bruun Rasmussen Auctioneers

Jesper Bruun Rasmussen, auctioneer

Jørgen Byriell, officially appointed external supervisor

COMMISSION

Bruun Rasmussen undertakes to execute commission bids for bidders who are unable to be present at the auction. It is a prerequisite that Bruun Rasmussen receives the commissions by letter, fax or telephone 24 hours before the start of the auction for the bidders' credit to be checked, if necessary. Bids by the homepage are to be received a minimum of 3 hours before the start of the auction. Bruun Rasmussen is not to be held responsible for any errors that may occur using this service.

CONDITION REPORTS

Bruun Rasmussen undertakes to provide further information about the state and condition of the lots if possible. This is regarded as a service for customers who are unable to make a personal inspection of the lots at the preview. Bruun Rasmussen stresses that the information given cannot be used as the basis for complaints; complaints can only be based on the description.

EXEMPTION FROM VAT

Buyers shall, according to § 2, pay full VAT on lots marked with an asterisk (*).

No Danish VAT is to be paid when VAT registered companies from other EU countries buy at Bruun Rasmussen and resell to private buyers. The private buyer then only has to pay VAT according to the rules in force in the country where the foreign company is VAT registered. For further information please consult your local authorities.

The above is an English translation of the Danish version of the Conditions of Purchase. In case of dispute, only the Danish version of the present Conditions of Purchase of Bruun Rasmussen is valid.

§ 1. BUDGIVNING

Køber er den byder, der får hammerslag. Den, der byder for andre, hæfter som selvskyldnerkautionist for berigtigelsen af købet.

På opfordring fra Bruun Rasmussen Kunstauktioner (herefter benævnt Bruun Rasmussen), skal alle bydere, hvadenten de ønsker at afgive et bud ved personligt fremmøde på auktionsstedet eller afgive en kommission pr. brev, fax eller hjemmeside eller byde direkte pr. telefon eller hjemmeside, kunne dokumentere deres betalingsdygtighed samt til enhver tid identificere sig. Bruun Rasmussen er altid berettiget til at nægte at acceptere et bud, hvis på forlangende ikke tilstrækkelig sikkerhed er stillet eller en passende å conto betaling har fundet sted.

Bud afgives af byderen ved personligt fremmøde på auktionsstedet eller ved skriftlig kommission enten pr. brev, fax eller hjemmeside. På online-auktioner afgives bud direkte fra hjemmesiden. Afgivelse af bud pr. telefon er muligt under visse forudsætninger, der afgøres af Bruun Rasmussen. Bruun Rasmussen påtager sig intet ansvar for eventuelle fejl eller fejlagelser, der måtte opstå ved brug af denne service. Auktionarius bestemmer overbuddets størrelse og træffer ligeledes afgørelse i alle tvivlstilfælde om budgivningen.

For at kunne byde på Bruun Rasmussens auktioner kræves forudgående registrering af byders betalingskort-/kreditkortoplysninger.

§ 2. BETALING

Ved køb på alle traditionelle auktioner tillægges hammerslagsprisen 30% (for vin, mønter og frimærker 25%), der dækker salær på 24% samt moms af salæret.

Ved køb på alle net-auktioner tillægges hammerslagsprisen 25%, der dækker salær på 20% samt moms af salæret.

Visse numre handles efter særlige regler til fuldmoms, så udover auktionsomkostninger på 24% (for net-auktioner, vin, mønter og frimærker dog 20%), beregnes moms på 25% af både hammerslag og auktionsomkostninger. Disse numre er mærket med en stjerne (*).

Danske momsregistrerede købere skal overfor Bruun Rasmussen oplyse deres SE-/CVR-nr. (moms-nr.), da dette skal anføres på de fakturaer, hvor varen købes i fuld moms.

For visse udenlandske købere gælder der særlige regler for afgiftsfritagelse jvf. § 4. Afgiftsfritagelse omfatter ikke EU private købere, som ligestilles med danske købere jvf. gældende dansk lovgivning om handel med brugte varer, kunstgenstande, samlerobjekter og antikviteter.

Købesummen forfalder til betaling ved tilslaget. Der kan betales kontant op til DKK 50.000 eller med Dankort, banknoteret check, rejsechecks, Visa-, Master-, Diners Club- eller Euro-card. Personlige udenlandske checks kan kun anvendes efter forudgående aftale.

På de traditionelle auktioner i Bredgade skal betaling af købte emner finde sted under eller umiddelbart efter auktionen og under alle omstændigheder senest 8 dage efter fakturadatoen. På net-auktionerne trækkes købesummen automatisk på det af kunden oplyste betalings-/kreditkort i forbindelse med, at det købte emne udtages til transport (ca. 12 timer efter dagens salg). Samtidig tilsendes køber faktura og transportoplysninger.

Betales købesummen ikke rettidigt, skal der svares rente heraf med 1,5% pr. påbegyndt måned.

Betales købesum og renter ikke inden 8 dage efter at Bruun Rasmussen har afsendt påkrav herom til køber, er Bruun Rasmussen berettiget til at annullere købet og bortsælge det købte på ny auktion hos Bruun Rasmussen eller underhånden og afkræve køber ethvert herved opstået tab. Et eventuelt overskud tilfalder den, der har indleveret det købte til auktion.

Har den misligholdende køber tilgodehavender fra salg af effekter hos Bruun Rasmussen, er Bruun Rasmussen berettiget til at berigtige ethvert tilgodehavende hos køber ved modregning.

Har den misligholdende køber indleveret andre effekter til salg, er Bruun Rasmussen berettiget til at bortsælge sådanne effekter på auktion hos Bruun Rasmussen uden at være bundet af en af den misligholdende køber fastsat mindstepris. Den misligholdende køber er ikke berettiget til at kræve udlevering af effekter indleveret til salg, så længe forfalden gæld til Bruun Rasmussen ikke er betalt, uanset om værdien af sådanne effekter må anses at overstige forfalden gæld.

Bruun Rasmussen er berettiget til at afvise bud afgivet af en køber, der er i misligholdelse med sine betalingsforpligtelser over for Bruun Rasmussen eller et bud afgivet af en anden på den pågældendes vegne, ligesom Bruun Rasmussen er berettiget til at kræve et depositum som betingelse for accept af fremtidige bud.

§ 3. FORTRYDELSESRET

A. Ved køb på alle traditionelle auktioner er der ikke fortrydelsesret. Køb kan derfor ikke fortrydes, uanset om budafgivning er via web-kommissionsbud, live-bidding eller på anden vis.

B. For privatkøb af emner på en online-auktion gælder loven om fjernsalg, herunder også 14 dages fortrydelsesret. Eventuelle omkostninger forbundet med transport af købte emner retur fra køber, betales af køber selv.

Såfremt køber benytter sig af sin fortrydelsesret, refunderer Bruun Rasmussen betalingen umiddelbart efter, at varen er sendt retur og modtaget af Bruun Rasmussen. Bruun Rasmussen gør opmærksom på, at det herefter er op til bankerne/kreditkortselskaberne, hvornår refusionen indgår på købers konto.

§ 4. AFGIFTSFRITAGELSE

Udenlandske købere, der opfylder en af nedenstående betingelser, betaler de gældende salærssatser jf. ovenstående, men bliver ikke belastet af dansk moms. Den danske moms deponeres dog hos Bruun Rasmussen, indtil eksporten er gennemført på dokumenteret lovpligtigt vis.

A. Købere, som er momsregistreret i et andet EU-land, kan fritages for at betale dansk moms, når det kan dokumenteres, at købet er transporteret til den adresse, som køber har angivet over for Bruun Rasmussen og som er anført på fakturaen. I sådanne tilfælde skal der afregnes moms i henhold til de gældende regler i det land, hvor virksomheden er momsregistreret. Det tilrådes at søge oplysning hos de lokale myndigheder.

B. Købere med bopæl uden for EU kan fritages for dansk moms, når det kan dokumenteres, at købet er transporteret ud af EU. Bruun Rasmussen udsteder så vidt muligt de fornødne eksportpapirer, som skal fremvises ved toldmyndighederne, og forbeholder sig ret til at opkræve et gebyr herfor.

Foretages eksporten af en af Bruun Rasmussen godkendt speditør skal momsen ikke deponeres. Se listen over godkendte speditører

§ 5. AFGIFTSBETALING

A. Momsregistrerede virksomheder i andre EU-lande kan undlade at gøre brug af muligheden for momsfrigtagelse og i stedet betale dansk brugtmoms/fuldmoms. Dette skal meddeles Bruun Rasmussen inden kl. 10 dagen efter købet.

B. Momsregistrerede virksomheder i Danmark kan vælge at betale fuldmoms jf. ovenstående. Dette skal meddeles Bruun Rasmussen inden kl. 10 dagen efter købet.

§ 6. UDLEVERING

Købesummen skal være betalt, inden det købte kan udleveres til køberen. Det købte henligger fra hammerslaget for købers regning og risiko. For varer, der ikke afhentes ifølge aftale efter hammerslaget, vil blive kørt på fjernlager på købers regning og risiko. Købte varer, der er betalt, men ikke afhentet, vil efter 1 år blive videresolgt for købers regning ved auktion eller underhånden.

§ 7. FORSENDELSE

Såfremt Bruun Rasmussen påtager sig at emballere og fremsende købte varer, sker dette på købers regning og risiko. Bruun Rasmussen kan således ikke drages til ansvar for skader forvoldt på købte varer under forsendelse eller for forsvundne forsendelser.

§ 8. KUNSTNERAFGIFT TIL COPY-DAN ^{CD}

Ifølge gældende dansk lovgivning om ophavsret skal der opkræves følgeretsvederlag for værker af nyere danske og visse udenlandske kunstnere, som enten er nulevende eller ikke har været døde i mere end 70 år. Følgeretsvederlaget opkræves af Bruun Rasmussen på vegne af kunstneres organisation Copydan. Disse værker er mærket (CD) for Copydan ud for katalognummeret.

Den såkaldte Copydan-afgift tillægges hammerslagsprisen inkl. salær, når beløbet overstiger €300.

Copydan-afgiften er:

- 5% af den del af hammerslagsprisen og salæret (ekskl. moms), der udgør indtil €50.000.
- 3% af den del af hammerslagsprisen og salæret (ekskl. moms), der ligger mellem €50.000 og €200.000.
- 1% af den del af hammerslagsprisen og salæret (ekskl. moms), der ligger mellem €200.000 og €350.000.
- 0,5% af den del af hammerslagsprisen (ekskl. moms), der ligger mellem €350.000 og €500.000.
- 0,25% af den del af hammerslagsprisen (ekskl. moms), der ligger over €500.000.

Copydan-afgiften kan ikke overstige €12.500 for det enkelte kunstværk.

Euro-kursen er fastsat af Copydan i 2016 til kurs 746,02 pr. €100.

§ 9. EKSPORTTILLADELSE

Kulturværtdiudvalget er blevet ansøgt om eksporttilladelse, hvor dette kræves iflg. gældende dansk lovgivning om sikring af kulturværdier i Danmark. Foreligger en sådan ikke, vil dette blive meddelt den udenlandske køber umiddelbart efter hammerslaget. Derefter vil Bruun Rasmussen igen ansøge Kulturværtdiudvalget på købers vegne, nu hvor prisen kendes. Gives eksporttilladelse ikke, er Kulturværtdiudvalget forpligtet til at overtage det købte til den opnåede pris, hvilket betyder at købet bliver hævet for køber.

§ 10. BESKRIVELSE AF EMNER

Alt sælges i den stand, hvori det ved hammerslaget er at forefinde og som beskrevet i katalog eller hjemmeside med senere offentliggjorte ændringer og modifikationer.

Beskrivelsen er foretaget efter bedste overbevisning og under anvendelse af de anførte katalogiseringsprincipper.

De solgte effekter er ofte af en alder eller af en art, der bevirker, at de kan være behæftet med fejl, mangler, restaurering eller beskadigelser, der ikke nødvendigvis angives i katalog eller på hjemmesiden. Afbildninger i katalog eller på hjemmesiden er blot til identifikation og kan ikke anvendes til vurdering af effekternes stand.

Enhver der ønsker at byde på auktion, bør derfor ved selvsyn på de før auktionen afholdte eftersyn forvise sig om de ønskede effekters stand.

Beskrivelsen er udtryk for den på salgstidspunktet blandt lærde og eksperter herskende opfattelse.

Skulle der efter købet opstå tvivl om det købtes ægthed eller dets overensstemmelse med beskrivelsen, skal dette straks meddeles til Bruun Rasmussen.

Såfremt det må erkendes, at det købte er en forfalskning, eller såfremt beskrivelsen har været behæftet med væsentlige fejl, der har medført en væsentlig højere hammerslagspris, end en korrekt beskrivelse må antages at ville have resulteret i, er køber beret-

tiget til at annullere købet, hvorefter den samlede erlagte købesum tillagt auktionsomkostninger og evt. moms, vil blive refunderet køber.

Væsentlige fejl i beskrivelsen relateret til mål eller vægt erstattes kun procentuelt i forhold til differencen.

Retten til under de her anførte betingelser at annullere et køb kan kun udøves af den, der købte den pågældende effekt hos Bruun Rasmussen og er betinget af, at krav om annullering fremsættes skriftligt over for Bruun Rasmussen inden 2 år efter købsdagen, og af at det købte inden samme frist returneres til Bruun Rasmussen i den samme stand i enhver henseende, som det købte var i på hammerslagstidspunktet.

Køber kan i tilfælde af annullering ikke gøre krav på betaling af renter af købesummen og er ej heller berettiget til at kræve anden udgift eller tab, herunder eventuel mistet videresalgfortjeneste, dækket.

Et køb kan ikke kræves annulleret efter ovenstående bestemmelser, såfremt:

- a. beskrivelsen i katalog eller på hjemmesiden på hammerslagsdagen var i overensstemmelse med den på dette tidspunkt gældende opfattelse blandt lærde og eksperter.
- b. den eneste måde til på salgstidspunktet at få fastslået et falskneri var iværksættelsen af videnskabelige processer, hvis gyldighed først blev anerkendt efter salgstidspunktet, eller som ville have været uforholdsmæssigt omkostningskrævende eller uigennemførlige uden beskadigelse af den pågældende effekt.

I tillæg til ovenstående frist gælder de almindelige forældelsesregler i forældelsesloven, efter hvilke køber ikke under nogen omstændigheder kan gøre noget krav gældende over for Bruun Rasmussen, når der er forløbet mere end 5 år fra købsdagen.

Bruun Rasmussen Kunstauktioner
Jesper Bruun Rasmussen, Auktionsholder
Jørgen Byriel, Auktionsleder

KOMMISSIONER

Bruun Rasmussen påtager sig at byde i kommission for bydere, der ikke kan være til stede ved auktionen. Det er en forudsætning, at kommissioner indleveret pr. brev eller fax er Bruun Rasmussen i hænde i 24 timer før auktionens start, så om nødvendigt bydernes kreditværdighed kan undersøges. Via hjemmesiden er denne deadline 3 timer. Bruun Rasmussen påtager sig intet ansvar for eventuelle fejltagelser, der måtte opstå ved brug af denne service

KONDITIONSRAPPORTER

Bruun Rasmussen påtager sig, hvis det er muligt, at orientere nærmere om numrenes kondition og tilstand. Dette er ment som en service for kunder, der ikke selv har mulighed for ved selvsyn at undersøge numrene på eftersynet. Det understreges, at de givne oplysninger ikke kan gøres til genstand for reklamationer; her henvises til beskrivelsen.

FRITAGELSE FOR DANSK FULDMOMS

Købere skal ifølge § 2 betale fuldmoms af de varer der i katalog eller på hjemmesiden er markeret med stjerner (*).

Når virksomheder, der er momsregistrerede i andre EU-lande, køber hos Bruun Rasmussen og videresælger til private, skal der ikke betales dansk moms, men moms i henhold til de regler der gælder, hvor den udenlandske virksomhed er momsregistreret. Det tilrådes at søge oplysning hos de lokale myndigheder.

ADDRESSES

BRUUN RASMUSSEN AUCTIONEERS

COPENHAGEN – BREDGADE

BREDGADE 33

DK-1260 COPENHAGEN K

Tel +45 8818 1111

Fax +45 8818 1112

E-mail: bredgade@bruun-rasmussen.dk

COPENHAGEN – SUNDKROGSGADE

SUNDKROGSGADE 30

DK-2150 NORDHAVN

Tel +45 8818 1111

Fax +45 8818 1112

E-mail: havnen@bruun-rasmussen.dk

COPENHAGEN – BALTIKAVEJ

BALTIKAVEJ 10

DK-2150 NORDHAVN

Tel +45 8818 1111

Fax +45 8818 1112

E-mail: havnen@bruun-rasmussen.dk

AARHUS

SØREN FRICHS VEJ 34 D

DK-8230 ÅBYHØJ

Tel +45 8818 1100

Fax +45 8818 1101

E-mail: aarhus@bruun-rasmussen.dk

FYN

NADIA SEHESTEDT JUUL

Tel +45 8818 1183

E-mail: nsj@bruun-rasmussen.dk

ONLINE AUCTIONS – SUPPORT

BRUUN-RASMUSSEN.DK

Tel +45 8818 1114

E-mail: support@bruun-rasmussen.dk

REPRESENTATIVES:

FRANCE

DITTE HERBORG KROGH · PARIS

Tel +33 6 6185 4564

E-mail: dhk@bruun-rasmussen.dk

SOUTHERN FRANCE & LUXEMBOURG

PETER KOCH

Tel +45 4045 3403

E-mail: p.koch@bruun-rasmussen.dk

ITALY

JEANETTE IDA MØLLER · MILANO

Tel +39 340 053 9219

E-mail: j.moller@bruun-rasmussen.dk

SPAIN

VAGN ERIK KROGSØE

Tel +45 2445 1224

E-mail: vek@bruun-rasmussen.dk

KARIN K.J.V. FRIJS · MARBELLA

Tel +34 630 29 21 02

Fax +34 952 77 74 64

E-mail: k.frijs@bruun-rasmussen.dk

THAILAND

ANDERS NORMANN

Tel +66 818 177 273

E-mail: normann@bruun-rasmussen.dk

USA

RIKKE LUNAU STORM · NEW YORK

Tel +1 917 930 5543

E-mail: rs@bruun-rasmussen.dk

BENEDICTE HALLOWELL

Tel and Fax +1 617 566 7333

E-mail: b.hallowell@bruun-rasmussen.dk

CONTACT DIRECTLY

KONTAKT DIREKTE

HOVEDNUMMER / MAIN NUMBER

Bruun Rasmussen Auctioneers +45 8818 1111

ADMINISTRATION

Jakob Dupont, CEO +45 8818 1081
dupont@bruun-rasmussen.dk

KUNDESERVICE / CUSTOMER SERVICE

kundeservice@bruun-rasmussen.dk +45 8818 1010
customerservice@bruun-rasmussen.dk +45 8818 1010

KOMMISSIONER / COMMISSIONS

Lise Winther Wobido +45 8818 1013
Anja Bering Hansen +45 8818 1028
bids@bruun-rasmussen.dk

BESTILLING AF KATALOGER / CATALOGUE REQUESTS

Kundeservice / Customer service +45 8818 1111

AUKTIONS RÅDGIVNING / AUCTION GUIDANCE

Franziska Kampmann +45 8818 1026
fka@bruun-rasmussen.dk

TRANSPORT / TRANSPORTATION

transport@bruun-rasmussen.dk +45 8818 1055

VURDERING OG INFORMATION / VALUATION AND INFORMATION

INDBOVURDERINGER / VALUATION AT YOUR HOME

David Utzon-Frank +45 8818 1221
duf@bruun-rasmussen.dk

Kasper Nielsen +45 8818 1121
kn@bruun-rasmussen.dk

Casper Behrendtzen +45 8818 1235
cab@bruun-rasmussen.dk

Hans Ruben +45 8818 1231
hru@bruun-rasmussen.dk

Ralph Lexner +45 8818 1161
rl@bruun-rasmussen.dk

BØGER / BOOKS

Lærke Bøgh +45 8818 1217
lb@bruun-rasmussen.dk

FRIMÆRKER / STAMPS

Lars Godsk Jørgensen +45 8818 1211
lgj@bruun-rasmussen.dk

MØNTER / COINS

Michael Fornitz +45 8818 1201
mfo@bruun-rasmussen.dk

MODERNE DESIGN / MODERN DESIGN

Peter Kjølgaard Jensen +45 8818 1191
pkj@bruun-rasmussen.dk

Ole Ravn +45 8818 1192
olr@bruun-rasmussen.dk

MODERNE KUNST / MODERN ART

Niels Raben +45 8818 1181
nr@bruun-rasmussen.dk

Niels Boe Hauggaard +45 8818 1182
nbh@bruun-rasmussen.dk

PORCELÆN, GLAS OG ORIENTALSK KUNSTINDUSTRI / CERAMICS, GLASS AND ORIENTAL WORKS OF ART

Ralph Lexner +45 8818 1161
rl@bruun-rasmussen.dk

Charlotte Hviid +45 8818 1162
chv@bruun-rasmussen.dk

RUSSISK / RUSSIAN

Martin Hans Borg +45 8818 1128
mhb@bruun-rasmussen.dk

SMYKKER / JEWELLERY

Katrin Mikkelsen Sørensen +45 8818 1174
kms@bruun-rasmussen.dk

SØLV / SILVER

Amalie Hansen +45 8818 1194
amh@bruun-rasmussen.dk

TÆPPER / CARPETS

Henrik Schleppegrell +45 8818 1145
hsc@bruun-rasmussen.dk

VIN / WINE

Morten Stenør Larsen +45 8818 1207
msl@bruun-rasmussen.dk

VÅBEN / WEAPONS

David Utzon-Frank +45 8818 1221
duf@bruun-rasmussen.dk

ÆLDRE KUNST / FINE ART

Kasper Nielsen +45 8818 1121
kn@bruun-rasmussen.dk

Birte Stokholm +45 8818 1122
bst@bruun-rasmussen.dk

ÆLDRE MØBLER / FURNITURE

Anders Fredsted +45 8818 1142
afr@bruun-rasmussen.dk

Henrik Schleppegrell +45 8818 1145
hsc@bruun-rasmussen.dk

COMMISSION BIDS

KOMMISSIONSBUD

It is possible to leave commission bids if you can not be present at the auction yourself. This service is free of charge.

When leaving a commission bid, you are instructing our customer service to bid up to a specified amount on your behalf.

The situation can occur that another buyer has already bid the same as you were prepared to. Are you then willing to bid further? If not the lot will be sold to another buyer.

If you do not wish to exceed your bid then write "Max", for maximum, next to the amount. You can also allow us to raise your bid by approx. 15% or approx. 25%.

The hammer price may be higher or lower than the estimated price, so it is possible to buy below the estimate. Bruun Rasmussen will always buy at the lowest price possible, as if you yourself had been present at the auction.

All commission bids are strictly confidential.

Commission bids must be submitted no later than **24 hours** prior to the start of the auction.

HOW TO MAKE A COMMISSION BID:

Complete the commission form with all pertinent information.

Indicate the lot number.

Indicate the amount you are prepared to bid.

Should this amount be the absolute maximum, please write "Max" in the appropriate column.

You can also allow us to bid by up to approx. 15% or approx. 25% more by indicating so.

Sign the commission form and make sure that Bruun Rasmussen receives it **24 hours** prior to the start of the auction.

If the information should be insufficient, Bruun Rasmussen can abstain from bidding. Bruun Rasmussen can not be held responsible for error in bidding or failure to execute bids.

INTERNET:

Commission bids can be submitted via website bruun-rasmussen.dk directly from the page with the item you want to submit a bid for.

Deadline for submissions of bids via the website is **3 hours** prior to the start of the auction.

Submitted bids are shown under "Your bids" when you are logged in. Please contact technical support on +45 8818 1114 for questions about the registration and submission of bids on the website.

For additional information, please consult "Conditions of Purchase" §1.

TELEPHONE BIDDING:

Should you wish to bid at auction by telephone, please inform Bruun Rasmussen of your name and telephone number, as well as which catalogue numbers you are interested in, no later than **3 hours** prior to the start of the auction. You will then be contacted shortly before the relevant lot comes under the hammer, thereby allowing you to participate without being in the auction room yourself.

For additional information, please consult "Conditions of Purchase" §1.

Det er muligt at afgive kommissionsbud, hvis De ikke selv kan være til stede på auktionens dag. Denne service er gratis.

Når De afgiver en kommission, beder De vores kundeservice på Deres vegne byde op til et af Dem bestemt beløb i hammerslag.

Der kan opstå den situation, at en anden køber allerede har budt det beløb, som De ønsker at afgive. Er De da villig til at gå et bud højere eller er De indforstået med at nummeret sælges til anden side?

Ønsker De ikke at byde højere så skriv "Max" ud for beløbet. Er De i tvivl om hvor højt De vil byde, kan De hæve budet med op til ca. 15% eller ca. 25%.

Salgsprisen kan blive højere eller lavere end vurderingen, så der er også mulighed for at købe til under den angivne vurdering. Vor kundeservice køber altid så billigt som muligt til Dem, som havde De selv været tilstede på auktionen.

Alle kommissioner behandles strengt fortroligt.

Kommissionsbud skal være Bruun Rasmussen i hænde senest **24 timer** før auktionens start.

SÅDAN BYDER DE:

Udfyld blanketten kommissionsbud med alle oplysninger.

Angiv katalognummer.

Angiv beløbet De ønsker at byde.

Er dette Deres absolutte maximum bedes De anføre "Max" i kolonnen.

De kan også forhøje Deres bud med henholdsvis ca. 15% eller ca. 25%, ved at indikere dette i kolonnen.

De bedes underskrive kommissionsblanketten og sikre Dem, at Bruun Rasmussen modtager den senest **24 timer** før auktionens start.

Hvis Deres oplysninger ikke er tilstrækkelige, kan Bruun Rasmussen undlade at byde for Dem, ligesom Bruun Rasmussen ikke kan gøres ansvarlig for fejl ved budgivning.

INTERNET:

Kommissionsbud kan afgives på hjemmesiden bruun-rasmussen.dk direkte fra siden med den effekt, De ønsker at byde på.

Seneste afgivelse af bud via hjemmesiden er **3 timer** før auktionens start.

Afgivne bud kan ses på hjemmesiden under "Deres bud", når de er logget ind. Kontakt teknisk support på 8818 1114 for spørgsmål om registrering og budgivning via internettet.

For yderligere information, se "Købskonditioner", §1.

TELEFONBUD:

Såfremt De ønsker at byde pr. telefon, bedes De oplyse Bruun Rasmussen Deres navn og telefonnummer samt hvilke katalognumre, De ønsker at byde på, senest **3 timer** før auktionens start. De vil så blive ringet op kort før, den aktuelle vare kommer under hammeren, og De kan på denne måde deltage i auktionen uden selv at være til stede.

For yderligere information, se "Købskonditioner" på bruun-rasmussen.dk under "Guide".

COMMISSION BIDS

KOMMISSIONSBUD

BREDGADE

Skal være Bruun Rasmussen i hænde senest **24 timer** før auktionens start.
Must be submitted no later than 24 hours prior to the start of the auction.

AUKTION NR AUCTION NO: **865**

Navn Name: *

Adresse Address: *

Postnr./by City: *

Land Country: * Fax:

Tel: *

e-mail: CVR-nr. VAT No.:

Bank: Konto nr. Acct. No.:

Adresse Address:

Postnr./By City: Land Country:

Tel: Kontaktperson Contact:

Obligatoriske felter er mærket med en stjerne * *Mandatory fields are marked with an asterix **

Undertegnede giver hermed fuldmagt til Bruun Rasmussen Kunstauktioner A/S om på mine vegne at købe nedennævnte katalognumre så fordelagtigt som muligt, inden for det af mig anførte beløb, i hammerslag.
I hereby request that Bruun Rasmussen bid on my behalf on the following lots up at the prices indicated below.

Undertegnede har udfyldt ovennævnte med de ønskede oplysninger, samt har accepteret købskonditionerne.
The undersigned has supplied the required information and agrees to be bound by the conditions of purchase.

Signatur: * B.R. kunde-nr. Client No.:

Jeg ønsker at modtage salgsresultater på de emner jeg har budt på via email dagligt efter auktion
I wish to receive sales results on the items I have been bidding on via e-mail every day after the auction

på e-mail adressen *on this e-mail address:*

Katalog nr. Lot. No.	Beskrivelse Description	Bud kr. Bid DKK	Max	+15%	+25%

BRUUN RASMUSSEN KUNSTAUKTIONER A/S

Bredgade 33 · DK-1260 København K · Tel +45 8818 1111 · Fax +45 8818 1112 · bids@bruun-rasmussen.dk · bruun-rasmussen.dk

Fortsættes næste side *Please turn over*



MOMS OG KUNSTNERAFGIFT

BUYER'S STANDARD PREMIUM

30% AUCTIONEERS' MARGIN SCHEME

As of 1 January 1995 new EC regulations came into effect regarding the sale of secondhand goods, works of art, collector's items and antiques; these items may now be traded under the Auctioneers' Margin Scheme.

Under the Auctioneers' Margin Scheme the premium only is subject to VAT, i.e. the hammer price is exempted from VAT. The buyer's premium of 25% will thus henceforth include non-refundable VAT.

FULL VAT *

will be charged on goods that cannot be traded under the Auctioneers' Margin Scheme. These lots are marked with an asterisk *. The buyer pays the auction premium of 24% plus 25% VAT on the hammer price as well as the buyer's premium.

BUYER'S REDUCED PREMIUM 24%

is paid by buyers fulfilling the following terms/conditions:

1. Danish VAT registered buyers may choose to pay the 24% buyer's premium + 25% VAT on the total amount (Full VAT). The buyer may have the total VAT refunded and thus pays 24% in buyer's premium only.
2. VAT registered buyers in other EU countries may avoid Danish VAT by using their VAT registration number and thereby pay a buyer's premium of 24% only.
3. Residents of countries outside the EU meeting the Danish customs authorities' requirements regarding the export of goods pay the buyer's premium of 24% only (see Conditions of Purchase §3, Exemption from VAT).

ARTISTS' ROYALTIES PAYABLE TO COPY-DAN ^{CD}

Pursuant to current Danish legislation on copyright an artists' royalty of 5% of the total price exclusive of VAT (i.e. hammer price plus buyer's premium 24%) shall be collected on works of modern art by all Danish and most foreign artists. These works are marked ^{CD} for Copy-Dan next to the lot number.

For further information please refer to the Conditions of Purchase.

STANDARD AUKTIONSOMKOSTNINGER

30% - BRUGT MOMS

1. januar 1995 trådte nye love i kraft i EU vedrørende moms ved handel på auktion med brugte varer, kunstgenstande, samlerobjekter og antikviteter, der nu kan handles til brugt moms.

Efter de nye regler er det kun auktionsomkostninger, der skal tillægges moms, og ikke som tidligere varens fulde pris. I auktionsomkostninger er indregnet ikke fradragsberettiget moms.

FULD MOMS *

anvendes for visse varer som ikke kan handles i brugt moms. Disse er mærket med en stjerne *. Købere skal betale 24% i auktionsomkostninger, hvortil lægges 25% moms af hammerslaget og auktionsomkostningerne.

REDUCEREDE AUKTIONSOMKOSTNINGER 24%

betales af købere der opfylder følgende betingelser:

1. Danske momsregistrerede købere kan vælge at betale 24% i auktionsomkostninger + 25% moms af hele (fuldmoms). Momsbeløbet kan køber modregne, og betaler derved 24% i auktionsomkostninger.
2. Momsregistrerede købere i andre EU-lande kan, ved at anvende deres EU-momsnr., undgå den danske moms og derved betale 24% i auktionsomkostninger.
3. Alle købere med bopæl i et land uden for EU, der opfylder de danske toldmyndigheders krav i forbindelse med eksport, betaler derved 24% i auktionsomkostninger (se købskonditioner, §4, Afgiftsfrigørelse).

KUNSTNERAFGIFT TIL COPY-DAN ^{CD}

Ifølge gældende dansk lovgivning om ophavsret, skal der opkræves 5% i kunstnerafgift af hammerslagsprisen med tillæg af auktionsomkostninger på 24% excl. moms på værker af alle nyere danske og de fleste udenlandske kunstnere. Disse værker er mærket ^{CD} for Copy-Dan ud for katalognummeret.

For nærmere information henvises til købskonditionerne.



M O D E R N