

THE ART OF LUXURY



BRUUN RASMUSSEN
PART OF THE BONHAMS NETWORK

THE ART OF LUXURY



LIVEAUKTION 917

Mandag 11. december kl. 15

EFTERSYN

Onsdag 29. november kl. 15 - 18

Torsdag 30. november kl. 11 - 18

Fredag 1. december kl. 11 - 18

Lørdag 2. december kl. 10 - 15

eller efter aftale

BRUUN RASMUSSEN

PART OF THE BONHAMS NETWORK

Nørgaardsvej 3 · DK-2800 Lyngby · Tel +45 8818 1111

info@bruun-rasmussen.dk · bruun-rasmussen.com



Kom til eftersyn, guidede ture og "gallery talks"!

Onsdag 29. november 15 - 18

- Kl. 15 Eftersynet åbner
- Kl. 16 "Højdepunkter under hammeren" – en guidet tur i eftersynet med fokus på ældre og moderne kunst ved vores eksperter Sofie Normann Christensen og Kristina Ulfvik.

Torsdag 30. november 11 - 18

Kaffevogn

- Kl. 14 "Højdepunkter under hammeren" – en guidet tur i eftersynet med fokus på ældre og moderne kunst ved vores eksperter Julie Arendse Voss og Kathrine Eriksen.
- Kl. 15 Gallery talk – CoBrA's 75-års jubilæum ved ekspert Niels Raben i dialog med Jacob Thage, tidligere direktør på Museum Jorn.
- Kl. 16 Live-musik og bobler

Fredag 1. december 11 - 18

Kaffevogn

- Kl. 14 "Højdepunkter under hammeren" – en guidet tur i eftersynet med fokus på ure og smykker ved vores eksperter Frederik Plum og Daniel Foldschack.
- Kl. 15 Gallery talk – CoBrA's 75-års jubilæum ved ekspert Niels Raben.
- Kl. 16 "Kærs Kunstkalender" – Peter Kær præsenterer årets kunstkalender, der er skabt i samarbejde med Statens Museum for Kunst.

Lørdag 2. december 10 - 15

Kaffevogn

- Kl. 12 Gallery talk – Kongeligt sølv og Pietro Krohns "Hejrestel" ved ekspert Martin Hans Borg.
- Kl. 13 "Højdepunkter under hammeren" – en guidet tur i eftersynet med fokus på design ved ekspert Peter Kjelgaard.

NB! Alle talks og ture begynder i "Speakers Corner" i udstillingsområdet.

AUKTIONSKALENDER

Tirsdag	5. december - Modern Art	
	kl. 16 Malerier og skulpturer	
	Grafik	
	kl. 19 CoBrA	
Onsdag	6. december - Antiques	
	kl. 14 Asiatisk kunsthåndværk	401 - 428
	Kl. 15 Kunsthåndværk, møbler og tæpper	429 - 517
	Kl. 19 Malerier og tegninger	518 - 611
Torsdag	7. december - Design	
	kl. 16 Kunsthåndværk	
	Møbler, lamper og tæpper	
	kl. 20 Netauktion på bruun-rasmussen.dk - Bordeaux	
Mandag	11. december - The Art of Luxury	
	kl. 15 Smykker	901 - 1088
	Tasker	1089 - 1105
	kl. 19 Armbåndsure	1106 - 1177

VIGTIG INFORMATION VEDR. BUDGIVNING!

Bonhams' internationale kunder kan også byde med på Bruun Rasmussens aktuelle Liveauktion via Bonhams' hjemmeside: bonhams.com

SIDSTE FRIST FOR AFHENTNING: ONSDAG DEN 20. DECEMBER

Genstande købt på denne auktion skal være betalt senest otte dage efter fakturadatoen og afhentet på Nørgaardsvej 3 i Lyngby senest onsdag den 20. december. I modsat fald bliver de transporteret til Bruun Rasmussens lager på Paul Bergsøes Vej 16 i Glostrup for købers regning og risiko, hvor de kan afhentes fra fredag den 22. december. Transporten koster 150 kr. pr. genstand inkl. moms, og opbevaringen koster 150 kr. pr. genstand pr. påbegyndt uge inkl. moms.



THE ART OF LUXURY



LIVE AUCTION 917

Monday 11 December 3 pm

PREVIEW

Wednesday 29 November 3 pm - 6 pm

Thursday 30 November 11 am - 6 pm

Friday 1 December 11 am - 6 pm

Saturday 2 December 10 am - 3 pm

or by appointment

BRUUN RASMUSSEN

PART OF THE BONHAMS NETWORK

Nørgaardsvej 3 · DK-2800 Lyngby · Tel +45 8818 1111

info@bruun-rasmussen.dk · bruun-rasmussen.com





DAYS OF SALE

Tuesday	5 December - Modern Art		
	4 pm	Paintings and sculptures Prints	
	7 pm	CoBrA	
Wednesday	6 December - Antiques		
	2 pm	Asian decorative art	401 - 428
	3 pm	Decorative art, furniture and carpets	429 - 517
	7 pm	Paintings and drawings	518 - 611
Thursday	7 December - Design		
	4 pm	Decorative art Furniture, lamps and carpets	
	8 pm	Online auction at bruun-rasmussen.dk - Bordeaux	
Monday	11 December - The Art of Luxury		
	3 pm	Jewellery	901 - 1088
		Handbags	1089 - 1105
	7 pm	Wristwatches	1106 - 1177

IMPORTANT INFORMATION ABOUT BIDDING AT THE AUCTION

Bonhams' international customers can also bid at Bruun Rasmussen's current Live Auction via Bonhams' website: bonhams.com

DEADLINE FOR CLAIMING ITEMS: WEDNESDAY 20 DECEMBER

Items bought at this auction must be paid no later than eight days from the date of the invoice and claimed at Nørgaardsvej 3 in Lyngby by Wednesday 20 December at the latest. Otherwise, they will be moved to Bruun Rasmussen's storage facility at Paul Bergsøes Vej 16 in Glostrup at the buyer's expense and risk. Here, they can be picked up from Friday 22 December. This transportation will cost DKK 150 per item VAT included, and storage will cost DKK 150 per item per week VAT included.

Velkommen til Liveauktion i Lyngby!

2023 har været forandringernes år hos Bruun Rasmussen. Den 2. oktober åbnede vi dørene til vores nye hovedkontor på Nørgaardsvej 3 i Lyngby til en begivenhedsrig uge med besøg af Lyngbys borgmester Sofia Osmani, rundvisninger, særudstillinger, kunstforedrag og et brag af en fest fredag med skønne danske sange af Sankt Annæ Pigeor, taler, drinks og musik. Ingen af os havde drømt om, hvilken succes ugen blev – flere end 6.000 kunder, samarbejdspartnere, venner af huset og nye naboer kom forbi. Vi vil gerne benytte lejligheden til at sige mange tak til alle jer, der var med til at fejre åbningen af vores nye auktionshus!

Nu er tiden inde til at afslutte året med en storslået Liveauktion, hvor vi for første gang på den nye lokation i Lyngby svinger hammeren over et væld af kunstværker, enestående designmøbler, sjældne antikviteter, diaman Smykker, klassiske håndtasker og armbåndsurre fra førende brands. Auktionen forløber over fire dage midt i det store udstillingslokale, hvor hele udvalget i ugen op til auktionen vil blive udstillet. Vi glæder os til at byde alle velkommen til årets sidste liveauktion og indledende eftersyn hos Bruun Rasmussen. Hvis man ikke har mulighed for at deltage personligt i auktionen, er det som altid muligt at byde med via livebidding, telefon eller kommissionsbud.

En af dagene er dedikeret til auktionen ”CoBrA – stærke stemmer i efterkrigstidens Europa“, hvor vi for anden gang i samarbejde med Bonhams’ globale netværk af auktionshuse markerer en af de mest banebrydende kunstretninger i det 20. århundrede. Det er nu 75 år siden, at gruppen af progressive kunstnere stiftede CoBrA på Café Notre Dame i Paris, og på auktionen præsenterer vi en lang række mesterværker af gruppens velkendte navne som Asger Jorn, Pierre Alechinsky, Corneille, Karel Appel, Christian Dotremont og Sonja Ferlov Mancoba. Alle værkerne er præsenteret i et særligt CoBrA-katalog, som kan bestilles på bruun-rasmussen.dk eller købes i vores receptioner.

Vi har udgivet fem auktionskataloger til liveauktionen, og i nærværende katalog findes et stort udvalg af vidunderlige smykker, tasker og armbåndsurre samlet under overskriften ”The Art of Luxury”. Højdepunkterne tæller et par øreringe med safirer, diamanter og perler, der er en dronning værdig. De har været båret af skuespillerinden India Armateifio i rollen som den unge dronning Charlotte i serien ”Bridgerton: Dronning Charlotte”. Når det gælder armbåndsurre, markerer vi 250-året for den danske urmager Urban Jürgensen med to klassiske eksemplarer af den eftertragtede ”Reference 8” – et i stål og et i platin, men vi præsenterer også to af de lidt mere prangende Rolex Daytona i guld opkaldt efter den amerikanske musiker John Mayer. Man kommer heller ikke til at gå forgæves efter ikoniske designtasker fra nogle af verdens største brands, fx de sjældne modeller ”Large XXL Classic Flap Bag” fra Chanel og ”Twist MM” fra Louis Vuitton. Med til luksus kategorien hører også vin, og denne gang sætter vi fokus på de kostbare dråber fra Bordeaux med højdepunkter som Château Latour 1961, Château Latour 2009 og ikke mindst Château Petrus 1990 på en særlig temaauktion på nettet torsdag den 7. december kl. 20.

Vi glæder os til at byde indenfor i det nye auktionshus til udstilling og auktion!

Jakob Dupont, administrerende direktør og Kasper Nielsen, vurderings- og salgsdirektør

Welcome to Live Auction in Lyngby!

2023 has been a year of change for Bruun Rasmussen. On 2 October, we opened the doors to our new head office at Nørgaardsvej 3 in Lyngby for an eventful week which included a visit from the mayor of Lyngby, Sofia Osmani, guided tours, special exhibitions, art talks and a fabulously festive Friday with beautiful Danish songs performed by Copenhagen Girls’ Choir (Sankt Annæ), speeches, drinks and music. None of us could have imagined just what a success the week would be – with more than 6,000 customers, business partners, friends of the house and new neighbours popping in. We’d like to take this opportunity to say a big thank you to all of you who helped celebrate the opening of our new auction house!

The time has now come to round off the year with a magnificent Live Auction, where, for the first time at our new location in Lyngby, we’ll be swinging the hammer over a multitude of works of art, unique designer furniture, rare antiques, diamond jewellery, classic handbags and wristwatches from leading brands. The auction takes place over four days in the middle of the large exhibition room, where the entire selection will be exhibited in the week leading up to the auction. We look forward to welcoming everyone to the last Live Auction of the year – and the Preview before it – at Bruun Rasmussen. If you’re unable to attend the auction in person, it is, as always, possible to bid via live bidding, over the phone, or to submit a commission bid.

One of the days is dedicated to the “CoBrA – Strong Voices in Post-war Europe” Auction, where, for the second time in collaboration with Bonhams’ global network of auction houses, we’ll be celebrating one of the most pioneering art movements of the 20th century. It is now 75 years since the group of progressive artists founded CoBrA at Café Notre Dame in Paris, and at the auction we’ll be presenting a large number of masterpieces by the group’s well-known names such as Asger Jorn, Pierre Alechinsky, Corneille, Karel Appel, Christian Dotremont and Sonja Ferlov Mancoba. All the works are presented in a special CoBrA catalogue, which can be ordered at bruun-rasmussen.dk or purchased in our receptions.

We’ve published five auction catalogues for the Live Auction, and this catalogue features a large selection of wonderful jewellery, bags and wristwatches under the heading “The Art of Luxury”. The highlights include a pair of sapphire, diamond and pearl earrings fit for a queen. They were worn by the actress India Amarteifio in the role of the young Queen Charlotte in the series “Queen Charlotte: A Bridgerton Story”. When it comes to wristwatches, we’ll be marking the 250th anniversary of the Danish watchmaker Urban Jürgensen with two classic models of the coveted “Reference 8” – one in steel and one in platinum. We’ll also be presenting two of the slightly more flamboyant Rolex Daytona watches in gold, named after the American musician John Mayer. And you’ve come to the right place for iconic designer bags from some of the world’s leading brands, including the rare “Large XXL Classic Flap Bag” from Chanel and “Twist MM” from Louis Vuitton. The luxury category also includes wine, and this time we’re focusing on the precious drops from Bordeaux with highlights such as Château Latour 1961, Château Latour 2009 and, not least, Château Petrus 1990 at a special themed Online Auction on Thursday 7 December at 8 pm.

We look forward to welcoming you inside the new auction house for the exhibition and auction!

Jakob Dupont, CEO and Kasper Nielsen, Director of Valuation and Sales

SPECIALISTS IN JEWELLERY,
FASHION, WATCHES AND WINE



*Head of Department of Jewellery,
Fashion and Watches*

Daniel Foldschack
+45 8818 1174
dfo@bruun-rasmussen.dk



Jewellery

Eva Dybkjær
+45 8818 1227
evd@bruun-rasmussen.dk



Jewellery

Rie Kertsch Dalager
+45 8818 1175
rkd@bruun-rasmussen.dk



Jewellery

Kristine Toftgaard Tanderup
+45 8818 1237
ktt@bruun-rasmussen.dk



Jewellery

Rikke Palmø
+45 8818 1171
rp@bruun-rasmussen.dk



Handbags and Fashion

Emma Marie Huus-Thomsen
+45 8818 1179
eht@bruun-rasmussen.dk



Wristwatches

Frederik Plum
+45 8818 1168
fp@bruun-rasmussen.dk



Wristwatches

Esben Skov Jensen
+45 8818 1199
ej@bruun-rasmussen.dk



Head of Department of Wine

Thomas Rosendahl Andersen
+45 8818 1206
tra@bruun-rasmussen.dk



Wine

Thomas Løbner-Olesen
+45 8818 1241
tlo@bruun-rasmussen.dk



Global Head of Jewellery - Bonhams

Jean Ghika
+44 20 7468 8282
jean.ghika@bonhams.com



Director of Valuation and Sales

Kasper Nielsen
+45 8818 1121
kn@bruun-rasmussen.dk



Global Head of Watches - Bonhams

Jonathan Darracott
+44 20 7447 7412
jonathan.darracott@bonhams.com



Representative France + Belgium

Ditte Herborg Krogh
+33 6 6185 4564
dhk@bruun-rasmussen.dk



Senior International Director - Wine - Bonhams

Richard Harvey
+44 20 7468 5811
richard.harvey@bonhams.com

JEWELLERY

Monday 11 December 3 pm

Lot 901 - 1088





901
OLE LYNGGAARD

A "Kvist" necklace with a detachable pendant set with numerous brilliant-cut diamonds weighing a total of app. 1.51 ct., mounted in 18k gold and white gold. Colour: F-G. Clarity: VS. L. app. 10.5 and 40 cm. (2)

Accompanied by original case and receipt.

Retail price DKK 70,000. 2006.

DKK 30,000–40,000 / € 4,000–5,350

902
HARTMANN'S

An eternity diamond ring set with numerous princess- and baguette-cut diamonds weighing a total of app. 2.32 ct., mounted in 18k white gold. Colour: F-G. Clarity: VVS-VS. W. app. 4 mm. Size 53. 2005.

Accompanied by certificate no. 15503 and a case.

Insurance value DKK 45,500.

DKK 10,000–15,000 / € 1,350–2,000

903

An emerald and diamond ring set with two pear-shaped emeralds weighing a total of app. 1.55 ct. each encircled by numerous marquise- and rose-cut diamonds weighing a total of app. 1.72 ct., mounted in 18k white gold. Size app. 52.5.

DKK 40,000–50,000 / € 5,350–6,700

904 *

An emerald and diamond ring set with a Colombian emerald-cut emerald weighing app. 3.33 ct. encircled by numerous brilliant-cut diamonds weighing a total of app. 4.20 ct., mounted in 18k white gold. Size app. 56.

Accompanied by "The Gem & Pearl Laboratory" report no. 23169. May 2023.

DKK 120,000–140,000 / € 16,000–19,000





905

An emerald necklace set with numerous circular-cut emeralds weighing a total of app. 2.25 ct. and numerous brilliant-cut diamonds weighing a total of app. 7.00 ct., mounted in 14k white gold. Colour: D-H. Clarity: VS-SI. L. 43.3 cm. Accompanied by case and AIG certificate no. J3311737631. DKK 50,000–60,000 / € 6,700–8,050

906 *

An emerald and diamond pendant set with a pear-shaped emerald weighing app. 3.66 ct. encircled by numerous brilliant-cut diamonds weighing a total of app. 1.16 ct., mounted in 18k white gold. Accompanied by necklace of 18k white gold. L. 44 cm. (2) DKK 40,000–50,000 / € 5,350–6,700

907

A pair of ruby and diamond ear studs each set with a heart-shaped ruby weighing a total of app. 2.95 ct. encircled by numerous brilliant-cut diamonds weighing a total of app. 0.25 ct., mounted in 18k white gold. Colour: H. Clarity: SI-P. W. 7 mm. (2) DKK 10,000–12,000 / € 1,350–1,600

908

A diamond ring set with a hexagonal-cut natural fancy brownish yellow diamond weighing app. 5.01 ct. encircled by numerous marquise- and brilliant-cut diamonds weighing a total of app. 2.00 ct., totalling app. 7.01 ct., mounted in 18k white gold. Colour: G-H. Clarity: VS. Size 53. Circa 1980. Accompanied by IGI diamond report no. 185534128. Antwerp, 2015. DKK 150,000–175,000 / € 20,000–23,500

909

An emerald and diamond ring set with an emerald-cut emerald weighing app. 3.13 ct. flanked by numerous brilliant-cut diamonds weighing a total of app. 1.10 ct., mounted in platinum. Colour: F-J. Clarity: VS-P1. Size 56. Accompanied by CIGEM short report no. 22990. DKK 50,000–60,000 / € 6,700–8,050

910

A diamond bracelet set with numerous brilliant-cut diamonds weighing a total of app. 7.10 ct., mounted in 14k white gold. Colour: F-I. Clarity: VS-P. L. 18.3 cm. Accompanied by case and AIG certificate no. J3330179329. DKK 45,000–50,000 / € 6,050–6,700





911

A pair of diamond ear studs each set with four radiant- and cushion-cut Light Fancy Yellow diamonds weighing a total of app. 3.60 ct., mounted in 18k gold. Clarity: VS-SI. W. app. 10 mm. (2)

DKK 40,000–50,000 / € 5,350–6,700

912

A pair of solitaire diamond ear studs each set with a brilliant-cut diamond weighing a total of app. 1.85 ct., mounted in 18k gold. Colour: H-I. Clarity: SI-P. W. 7 mm. (2)

DKK 40,000–45,000 / € 5,350–6,050

913

A pair of diamond ear studs in the shape of a leaf each set with numerous pear-shaped light yellow diamonds encircled by numerous brilliant-cut diamonds weighing a total of app. 2.06 ct., mounted in 18k gold and white gold. L. 22 mm. W. 23 mm. (2)

DKK 20,000–25,000 / € 2,700–3,350

914

A diamond ring set with a fancy-cut diamond weighing app. 3.05 ct. encircled by numerous brilliant-cut diamonds weighing a total of app. 2.50 ct., mounted in 18k gold. Colour: H-I. Clarity: VVS. Size app. 54.

Accompanied by HRD report no. 230000078502.

Cut grade: Hearts & Arrows

DKK 125,000–150,000 / € 17,000–20,000

915

H. WALTER - RASMUSSEN

A diamond brooch set with numerous brilliant-cut white, yellow and green diamonds weighing a total of app. 2.70 ct., mounted in 14k white gold. L. app. 4.5 cm. 1966.

Accompanied by case and valuation from Københavns Guldsmedelaug. 1966.

DKK 10,000–15,000 / € 1,350–2,000

916

A diamond bracelet set with numerous multi-coloured fancy- and brilliant-cut diamonds weighing app. 12.87 ct., mounted in 18k white gold. Colour: L. Clarity: VVS-P1. Weight app. 13.5 g. L. 19 cm.

DKK 100,000–125,000 / € 13,500–17,000





917 *

A diamond necklace set with numerous brilliant-cut diamonds weighing a total of app. 8.06 ct., mounted in 18k white gold. Colour: H-J. Clarity: VVS-VS. W. app. 3 mm. L. 40.8 cm.

DKK 70,000–80,000 / € 9,400–10,500

918 *

A pair of diamond ear pendants each set with numerous brilliant-cut diamonds weighing a total of app. 3.40 ct., mounted in 18k rose and white gold. Diam. app. 3 cm. L. 4.3 cm. (2)

DKK 40,000–45,000 / € 5,350–6,050

919

A diamond ring set with a brilliant-cut Natural Fancy Light Pink diamond weighing app. 0.44 ct. encircled by numerous brilliant-cut Pink diamonds weighing a total of app. 0.26 ct. and numerous brilliant-cut white diamonds weighing a total of app. 0.84 ct., mounted in 18k rose and white gold. Clarity: VVS. Size 54.

Accompanied by HRD report no. 230000088085.

Cut grade: Hearts & Arrows.

DKK 35,000–40,000 / € 4,700–5,350

920

A diamond eternity ring set with numerous brilliant-cut diamonds weighing a total of app. 2.92 ct., mounted in 18k white gold. Colour: F. Clarity: VS. Size 56.

DKK 30,000–35,000 / € 4,000–4,700

921

A tourmaline and diamond bracelet set with numerous baguette-cut tourmalines weighing a total of app. 40.25 ct. and numerous brilliant-cut diamonds weighing a total of app. 3.03 ct., mounted in 18k rose gold. W. app. 1.5 cm. L. app. 17.7 cm.

DKK 60,000–70,000 / € 8,050–9,400

922

A diamond bracelet set with numerous brilliant-cut diamonds weighing a total of app. 6.71 ct., mounted in 18k rose gold. Colour: F. Clarity: VS. W. 3 mm. L. 18 cm.

DKK 60,000–80,000 / € 8,050–10,500



917



918



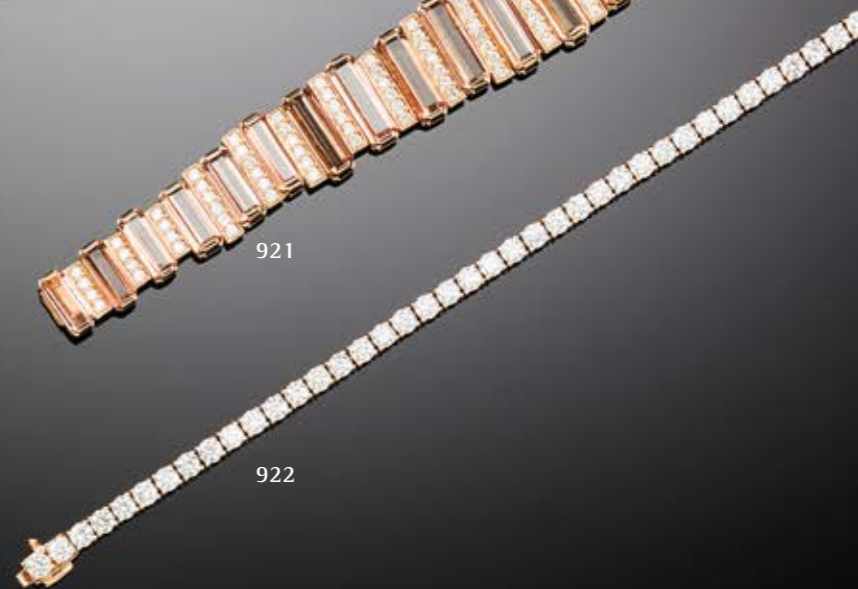
919



920



921



922



925
OLE LYNGGAARD
 A unique diamond ring set with five old-cut diamonds weighing a total of app. 2.20 ct. and two circular-cut sapphires, mounted in 18k white gold. Colour: H-J. Clarity: VS-P. Size app. 52. Circa early 1970s. DKK 20,000–25,000 / € 2,700–3,350

923
 A three-strand pearl necklace set with numerous cultured pearls and a clasp set with numerous circular-cut sapphires and numerous single- and brilliant-cut diamonds weighing a total of app. 0.22 ct., mounted in 18k white gold. W. 23 mm. Pearl diam. app. 7–7.5 mm. L. app. 40 cm. Provenance: Bought at auction no. 361 from "Arne Bruun Rasmussen Kunstauktioner". Accompanied by original receipt and case. DKK 10,000–12,000 / € 1,350–1,600

924
 A diamond brooch set with numerous old-cut diamonds weighing a total of app. 3.25 ct., mounted in platinum and 14k white gold. Colour: I-J. Clarity: VS-P. L. 44 mm. DKK 10,000–15,000 / € 1,350–2,000

926
 A ruby and diamond bangle set with numerous circular-cut rubies and rose-cut diamonds weighing a total of app. 0.60 ct., mounted in 14k gold. Diam. app. 6.6 cm. DKK 30,000–40,000 / € 4,000–5,350

927
 A ruby and sapphire concealed bracelet watch set with numerous circular-cut rubies and sapphires and numerous single- and brilliant-cut diamonds, mounted in 18k gold and white gold. Weight app. 79 g. W. 3 cm. L. 18.5 cm. "Vetta" mechanical movement with manual winding. The watch works but functionality is not guaranteed. Accompanied by case. DKK 30,000–35,000 / € 4,000–4,700



923



924



925



926



927



928

A pair of sapphire and diamond ear pendants each set with an emerald-cut sapphire weighing a total of app. 9.00 ct. flanked by numerous baguette-, trapeze- and brilliant-cut diamonds weighing a total of app. 16.50 ct., mounted in platinum. Weight in total app. 24.5 g. L. 7.5 cm. (2)

Accompanied by certificate from C. Dunaigre.

One sapphire is unheated.

DKK 120,000–140,000 / € 16,000–19,000

929

A pair of sapphire and diamond ear pendants each set with an oval-cut sapphire weighing a total of app. 1.70 ct. encircled by numerous brilliant-cut diamonds weighing a total of app. 0.80 ct., mounted in 18k white gold. L. 2.3 cm. (2)

DKK 15,000–20,000 / € 2,000–2,700

930

A sapphire and diamond ring set with an oval-cut sapphire weighing app. 1.59 ct. encircled by numerous brilliant-cut diamonds weighing a total of app. 1.56 ct., mounted in 14k white gold. W. 17 mm. Size app. 49.

Accompanied by jewellery appraisal by Ruben Svart no. 9707084623D.

Insurance estimate DKK 52,900. 1997.

DKK 12,000–15,000 / € 1,600–2,000

931

A sapphire and diamond ring set with an unheated cushion-cut sapphire weighing app. 3.27 ct. encircled by numerous brilliant-cut diamonds, mounted in 18k white gold. Size 53.5.

This stone has been given the AIGS "Royal Blue" grading on AIGS Sapphire Color Grading Scale.

Origin according to the certificate: Myanmar/Burma.

Accompanied by AIGS certificate no. GF22090702.

DKK 60,000–70,000 / € 8,050–9,400

932

A diamond bracelet set with numerous single-, old- and brilliant-cut diamonds weighing a total of app. 7.20 ct., mounted in platinum. Colour: H-J. Clarity: VS-P. Weight app. 35.5 g. W. 16 mm. L. app. 16.8 cm. Circa 1920s.

Accompanied by case from Bolou.

DKK 100,000–125,000 / € 13,500–17,000





933 *

A diamond necklace set with numerous brilliant-cut diamonds weighing a total of app. 1.21 ct., mounted in 18k white gold. W. 4.5 mm. L. 120 cm.

DKK 18,000–20,000 / € 2,400–2,700

934

A diamond necklace set with numerous brilliant-cut diamonds weighing a total of app. 4.88 ct., mounted in 18k rose gold. Colour: I-J. Clarity: VVS. L. app. 41.8–44.2 cm. (2)

The necklace is fitted with a detachable part and can be worn short or long.

DKK 30,000–35,000 / € 4,000–4,700

935 *

A diamond pendant set with a Natural Fancy Brownish Pink pear-shaped diamond weighing app. 0.26 ct. encircled by numerous brilliant-cut diamonds weighing a total of app. 0.30 ct., mounted in 18k white gold. L. 13.5 cm. Accompanied by necklace of 18k white gold. (2)

Accompanied by GIA report no. 5211989849.

DKK 15,000–18,000 / € 2,000–2,400

936 *

A pair of diamond ear pendants each set with numerous brilliant-cut diamonds weighing a total of app. 1.46 ct., mounted in 18k white gold. L. 6 cm. (2) *DKK 20,000–25,000 / € 2,700–3,350*

937

A pair of diamond ear studs each set with a brilliant-cut diamond weighing a total of 0.76 ct., mounted in 18k white gold. Colour: D-F. Clarity: VVS. (2)

Accompanied by HRD report no. 230000026237 and 230000051274. DKK 15,000–18,000 / € 2,000–2,400

938 *

A pair of diamond ear studs each set with numerous brilliant-cut diamonds weighing a total of 4.06 ct., mounted in 18k rose and white gold. L. app. 5.9 cm. (2) *DKK 45,000–50,000 / € 6,050–6,700*

939

A diamond ring set with numerous brilliant-cut diamonds weighing a total of app. 1.20 ct., mounted in 18k white gold. Colour: F-G. Clarity: VVS-VS. W. 1.1 cm. Size 53.

DKK 10,000–12,000 / € 1,350–1,600





940

A graduated South Sea pearl necklace set with numerous cultured South Sea pearls and a clasp of 18k white gold. Pearl diam. app. 12-14.5 mm. L. 44.5 cm. DKK 20,000-25,000 / € 2,700-3,350

941

A tanzanite pendant set with a fancy-cut tanzanite encircled by five rose-cut and numerous brilliant-cut diamonds weighing a total of app. 1.31 ct., mounted in 18k white gold. Accompanied by a necklace of 18k white gold. L. 3.7 and 42 cm. (2) DKK 15,000-18,000 / € 2,000-2,400

942

A pair of tanzanite and diamond ear pendants each set with an oval-cut tanzanite weighing a total of app. 2.69 ct. encircled by numerous brilliant-cut diamonds weighing at total of app. 0.76 ct., mounted in 18k white gold. Colour: D. Clarity: VVS. L. 2.5 cm. (2) DKK 20,000-25,000 / € 2,700-3,350

943

A tanzanite ring set with an emerald-cut tanzanite weighing app. 10.88 ct. encircled by numerous brilliant-cut diamonds weighing a total of app. 0.90 ct., mounted in 14k white gold. Colour: F-H. Clarity: VS-SI. Size 53.5. Accompanied by *AIG jewellery report no. J3311259125 and a case.* DKK 30,000-35,000 / € 4,000-4,700

944

A. MICHELSEN
A Belle Époque diamond brooch set with an old-cut diamond weighing app. 0.60 ct. and numerous old-, single- and rose-cut diamonds, mounted in 8k white gold and silver. Center stone: Colour: I. Clarity: SI. App. 4 x 4.5 cm. Accompanied by original case. DKK 15,000 / € 2,000

945

A diamond eternity ring set with numerous brilliant-cut diamonds weighing a total of app. 4.17 ct., mounted in 18k white gold. Colour: D. Clarity: VVS. Size 54. DKK 60,000-70,000 / € 8,050-9,400



940



941



942



943



944



945



946

A pair of fringe pearl and diamond ear pendants each set with numerous cultured fresh water pearls and numerous brilliant-cut diamonds weighing a total of 1.28 ct., mounted in 18k white gold. Colour: H. Clarity: SI-P. Pearl diam. app. 3.5-4 mm. L. 6 cm. (2)

Accompanied by case and certificate from Hartmann's. Insurance value DKK 34,700. DKK 15,000 / € 2,000

947

A pair of diamond ear studs each set with numerous old mine-, single- and baguette-cut diamonds weighing a total of app. 3.00 ct., mounted in 18k white gold. Colour: I-L. Clarity: VS-P1. L. 2 cm. (2)

Accompanied by original case and certificate from Peter Kynde.

Insurance value DKK 65,000.

DKK 20,000-25,000 / € 2,700-3,350

948

A pair of diamond ear pendants each set with numerous brilliant-cut diamonds weighing a total of app. 1.09 ct., mounted in 18k white gold. Colour: D. Clarity: VVS. L. 18 mm. (2)

Cut grade: Hearts & Arrows.

DKK 20,000-25,000 / € 2,700-3,350

949

A pair of Art Déco style diamond ear pendants each set with numerous old brilliant- and single-cut diamonds weighing a total of app. 1.00 ct., mounted in 14k white gold. Colour: F-G. Clarity: VS-P. L. 24 mm. (2)

Accompanied by case.

DKK 10,000 / € 1,350

950

HARTMANN'S

A diamond ring set with a cushion-cut diamond weighing app. 1.00 ct. encircled by numerous brilliant-cut diamonds weighing a total of app. 0.37 ct., mounted in 18k white and rose gold. Size 56.

Accompanied by original case and certificate from Ruben Svart. 2010.

Insurance value DKK 149,000.

DKK 40,000-50,000 / € 5,350-6,700

951

A diamond bracelet set with numerous single-, rose-, old- and old brilliant-cut diamonds weighing a total of app. 6.00 ct., mounted in platinum. L. app. 18 cm. Circa 1960-70s.

DKK 70,000-80,000 / € 9,400-10,500





952

An important ruby and diamond necklace set with numerous pear-shaped, oval- and marquise-cut rubies weighing a total of app. 50.00 ct. and pear-shaped and brilliant-cut diamonds weighing a total of app. 13.00 ct., mounted in 18k white gold. Colour: G-H. Clarity: VS-P1. Weight app. 66.5 g. L. app. 42 cm. Circa 2010.

*Purchased at Sotheby's "Magnificent Jewels", London.
DKK 275,000–300,000 / € 37,000–40,000*



952



953

B O L O U

A bombé diamond ring set with a brilliant-cut diamond weighing app. 10.47 ct. encircled by 128 brilliant-cut diamonds and 86 circular-cut yellow sapphires, mounted in 18k gold. Center stone: Colour: P. Clarity: VS. Diamonds: Colour: M. Clarity: VS1. Weight app. 20 g. Size 53.5.

DKK 600,000–800,000 / € 80,500–105,000



953



954^{ARR}

JYTTE KLØVE

b. 1949

A pearl necklace set with numerous cultured South Sea pearls and a clasp of 18k gold. Pearl diam. app. 8.5-10 mm. L. 58 cm.

The pearl necklace was shown at the special exhibition entitled "Silver Tales" at the Karen Blixen Museum Rungstedlund, October 2022 - April 2023.

Literature: Accompanied by catalogue from Jytte Kløve "Ørepynt i tråd med guldet". Necklace shown page 19.

DKK 35,000 / € 4,700

955

CARTIER

A pair of "Maillon Panthère" ear studs of 18k gold. Weight app. 8.5 g. W. 6 mm. L. 2.7 cm. (2)

DKK 12,000-15,000 / € 1,600-2,000

956

CARTIER

A "Maillon Panthère" ring of 18k gold. Weight app. 12.5 g. W. 7 mm. Ref. no. 674893. Size 51.

DKK 12,000-15,000 / € 1,600-2,000

957^{ARR}

JOHN RØRVIG

b. 1920, d. 2006

A bracelet of 14k gold. Weight app. 94.5 g. W. 1 cm. L. 18.5 cm. *DKK 25,000-30,000 / € 3,350-4,000*



954



955



956



957



958

A pair of emerald and diamond ear pendants each set with a Columbian baguette-cut emerald weighing a total of app. 4.00 ct. flanked by a fancy-cut and numerous single-, brilliant-, trapeze- and baguette-cut diamonds weighing a total of app. 3.00 ct., mounted in platinum. Colour: H-J. Clarity: VS-P1. L. 6.3 cm. (2)

Accompanied by AGL certificate no. 1120198.

The rear ear clips are 18k white gold.

DKK 125,000–150,000 / € 17,000–20,000

959

A diamond ring set with seven old mine-cut diamonds weighing a total of app. 4.50 ct., mounted in 18k white gold. Colour: H-I. Clarity: SI2-P2. Size app. 51.5.

Accompanied by case and certificate from Peter Kynde. Insurance value DKK 110,000.

DKK 40,000–50,000 / € 5,350–6,700

960

An emerald and diamond ring set with an emerald-cut emerald weighing app. 4.11 ct. encircled by four marquise-cut, six rose-cut and numerous brilliant-cut diamonds weighing a total of app. 1.33 ct., mounted in 18k white gold. Size 55.

DKK 50,000–60,000 / € 6,700–8,050

961

CHARLES HENRY TEMPLE

b. 1857, d. 1940

A diamond ring set with a brilliant-cut diamond weighing app. 1.00 ct. encircled by numerous brilliant-cut diamonds, mounted in 18k partly matted gold and white gold. W. app. 17 mm. Size 50.

Accompanied by an original "Charles de Temple" jewellery pouch. DKK 15,000–20,000 / € 2,000–2,700

962

A woven bracelet of 14k gold, rose and white gold. Weight app. 50 g. W. 19 mm. L. 19.3 cm.

DKK 12,000–15,000 / € 1,600–2,000





963
V. HOLMSTRUP

An asymmetrical pearl necklace set with numerous graduated cultured pearls and a diamond clasp set with a baguette-cut emerald encircled by numerous old-cut and old brilliant-cut diamonds, mounted in 14k white gold. Pearl diam. app. 2.8-7 mm. L. app. 39 cm.
According to the seller the pearls are from Sweden c. 1900-1920s. DKK 10,000-15,000 / € 1,350-2,000

964
BULGARI

A pair of pearl and diamond ear studs each set with an akoya cultured pearl and numerous brilliant-cut diamonds, mounted in 18k white gold. Pearl diam. 7 mm. L. 2.3 cm. (2)
Accompanied by original case and copy of receipt.
Retail price CHF 10,000. 2002.
DKK 15,000-20,000 / € 2,000-2,700

965
A sapphire ring set with an untreated oval-cut sapphire weighing app. 4.00 ct. encircled by numerous brilliant-cut diamonds weighing a total of app. 0.50 ct., mounted in 18k white gold. Size 50.5.
Origin presumably Ceylon.
Accompanied by case and jewellery report no. 622PT380 from Masterstones. 2022.
DKK 50,000-60,000 / € 6,700-8,050

966
CARTIER
A "C de Cartier" diamond ring set with numerous brilliant-cut diamonds weighing a total of app. 1.53 ct., mounted in platinum. Ref. no. 77801B. Size 54.
Accompanied by original case.
DKK 75,000-100,000 / € 10,000-13,500

967
A diamond bracelet set with numerous brilliant-cut diamonds weighing a total of app. 3.00 ct., mounted in 18k white gold. L. 18 cm.
DKK 30,000-35,000 / € 4,000-4,700



963



964



965



966



967



968 ^{ARR}
THOR SELZER

b. 1925, d. 1989
 A diamond necklace set with an old mine-cut diamond encircled by six brilliant-cut diamonds weighing a total of 3.00 ct., mounted in 14k gold. Colour: J-K. Clarity: VS-SI. L. app. 45 cm.
DKK 90,000–100,000 / € 12,000–13,500

969 *
NATASCHA TROLLE

A pair of emerald ear pendants each set with an oval-cut and two carved emeralds weighing a total of app. 3.75 ct. and an oval-cut Light Yellow diamond and four brilliant-cut diamonds weighing a total of app. 0.60 ct., mounted in 18k gold. L. 2.9 cm. (2) *DKK 18,000–20,000 / € 2,400–2,700*

970
 A pair of sapphire and diamond ear studs each set with a circular-cut and five pear-shaped green, orange and pink sapphires weighing a total of app. 4.45 ct. flanked by five brilliant-cut diamonds, mounted in 18k gold. Diam. app. 15 mm. (2)
DKK 10,000–12,000 / € 1,350–1,600

971
SABBADINI
 A sapphire and diamond ring set with circular-cut green sapphires weighing a total of app. 7.50 ct. and brilliant-cut diamonds weighing a total of app. 2.80 ct., mounted in 18k gold. Colour: F-G. Clarity: VVS-VS1. Size 54. Milan, circa 2012.
Retail price app. EUR 20,000.
DKK 25,000–30,000 / € 3,350–4,000

972
GÜBELIN
 An amethyst and diamond brooch set with a carré-cut amethyst, a spinel and a topaz and four brilliant-cut diamonds, mounted in 18k partly matted gold and white gold. Weight app. 21.5 g. Measurements app. 5 x 5.8 cm. Signed Gübelin. Ref. no. 2453-5. *DKK 10,000–12,000 / € 1,350–1,600*

973
 A diamond bracelet set with numerous brilliant-cut diamonds weighing a total of app. 10.35 ct., mounted in 18k gold. Colour: K. Clarity: VS. L. app. 18 cm.
DKK 50,000–60,000 / € 6,700–8,050





974
BJÖRN WECKSTRÖM

b. Helsinki 1935

A "Papillon" necklace of 18k matted gold and platinum. Weight app. 44 g. L. 44 cm. Limited edition no. 8/100. Made for Lapponia, 1986. Accompanied by original jewellery pouch and two extra chain links. DKK 25,000–30,000 / € 3,350–4,000

975
PER BORUP

A jewellery set comprising a bracelet and a necklace each with a ball clasp set with a brilliant-cut diamond, mounted in 18k gold and white gold. Necklace L. 43 cm. Bracelet L. 20 cm. W. 4 mm. (2) Can be worn together as a long necklace with a length of 63 cm. DKK 20,000–25,000 / € 2,700–3,350

976
CHOPARD

A bracelet of 18k gold. Weight app. 87 g. W. 1 cm. L. 21 cm. DKK 35,000–40,000 / € 4,700–5,350

977
LAPPONIA

A bracelet of 14k gold. Weight app. 53.5 g. W. 1.3–1.7 cm. L. 18 cm. DKK 12,000–15,000 / € 1,600–2,000



974



975



976



977



978
NATASCHA TROLLE

A sapphire necklace set with a cabochon aquamarine weighing app. 3.80 ct. flanked by an emerald-cut and two pear-shaped Light Yellow diamonds and three brilliant-cut diamonds weighing a total of app. 0.81 ct., mounted in 18k gold. W. 18 mm. L. app. 54-55.5 cm.

DKK 20,000–25,000 / € 2,700–3,350

979
A. DRAGSTED

A diamond ring set with an old brilliant-cut diamond weighing app. 1.20 ct., mounted in 18k gold. Colour: K. Clarity: P. Size 52.

Accompanied by case.

DKK 15,000–20,000 / € 2,000–2,700

980
 A diamond ring set with a brilliant-cut diamond weighing app. 2.50 ct. flanked by numerous brilliant-cut diamonds weighing a total of app. 0.98 ct., mounted in 18k gold. Colour: H-J. Clarity: VVS. Size 54.

Accompanied by HRD report no. 220000201516.

Cut quality: Hearts & Arrows.

DKK 180,000–200,000 / € 24,000–27,000

981^{ARR}
SOPHIE BILLE BRAHE

b. 1980

A unique "Palais des Escaliers" ring set with three princess-cut and seven baguette-cut diamonds, mounted in 18k gold. Weight app. 16 g. H. 2.9 cm. Size 49 and 54. 2011.

Accompanied by original case and paper bag.

Remanufacturing price 175,000 DKK.

DKK 40,000–50,000 / € 5,350–6,700

982
 A flexibel diamond ring set with numerous brilliant-cut diamonds weighing a total of app. 4.13 ct., mounted in 18k gold. Colour: H. Clarity: VVS. L. app. 2.8 cm. Size app. 56.

Cut-grade: Hearts & Arrows.

DKK 35,000–40,000 / € 4,700–5,350

983
 A diamond bracelet set with numerous brilliant-cut diamonds weighing a total of app. 3.50 ct., mounted in 18k gold. Colour: H-I. Clarity: VS. W. 4.5 mm. L. 18.4 cm.

Accompanied by case.

DKK 40,000–50,000 / € 5,350–6,700





986
A diamond ring set with an old-cut diamond weighing app. 2.00 ct. encircled by numerous brilliant-cut diamonds weighing a total of app. 1.20 ct., mounted in 18k gold and white gold. Colour: J-K. Clarity: VS-SI. Size 57. DKK 50,000–60,000 / € 6,700–8,050

987
An emerald and diamond bracelet set with five fancy-cut emeralds encircled by numerous old-, carré- and rose-cut diamonds, mounted in 18k gold and silver. L. 19.1 cm. Circa 1860-1880. *Four emeralds originate from Colombia and one from Brazil.* Accompanied by CGL report no. 20657. DKK 125,000–150,000 / € 17,000–20,000

988
An emerald and diamond bracelet set with an emerald-cut and two cushion-cut emeralds weighing a total of app. 9.00 ct. flanked by numerous rose-cut diamonds, mounted in 14k engraved gold and white gold. W. 2 cm. L. 19.3 cm. *The bracelet is richly engraved with two Griffins, flowers and ornamented foliage engravings.* DKK 15,000–20,000 / € 2,000–2,700

984
An emerald necklace set with numerous cabochon emeralds, polished emerald beads and numerous brilliant-cut diamonds, mounted in oxidised silver. W. 2.7 cm. L. 36.5 cm. DKK 15,000–20,000 / € 2,000–2,700

985
A pair of emerald ear clips each set with a polished emerald bead, two cabochon emeralds and numerous brilliant-cut diamonds, mounted in silver. L. 3.3 cm. (2) DKK 14,000–16,000 / € 1,900–2,150





989^{ARR}

ARJE GRIEGST

A unique amber necklace set with a face carved in amber and a polished emerald, mounted in 18k gold. L. app. 74 cm. 1982.

The amber belonged to the seller, who gave it to Arje Griegst, he encarved it with the face and designed the necklace for it.

The signature is carved on the backside of the amber.
DKK 60,000–80,000 / € 8,050–10,500

990^{ARR}

ARJE GRIEGST

A sapphire ring in the shape of a face set with a cabochon sapphire weighing app. 2.40 ct., mounted in 18k gold. Signed Griegst. W. 22 mm. Size 53. 1981.

Accompanied by original leather pouch.
DKK 25,000–30,000 / € 3,350–4,000

991^{ARR}

ARJE GRIEGST

A diamond ring "Lucy in the Sky" set with a brilliant-cut diamond weighing app. 0.03 ct., mounted in 18k gold. Signed Griegst. W. 16 mm. Size 55.

Accompanied by original leather pouch.
DKK 15,000–20,000 / € 2,000–2,700

992^{ARR}

ARJE GRIEGST

b. København 1938, d. 2016

A "Spiral" bangle of gilded sterling silver. Stamped Griegst 925. Diam. app. 5.8 x 5 cm.

Accompanied by original leather pouch.
DKK 10,000–12,000 / € 1,350–1,600



989



990



992



991



993
A coral necklace set with numerous polished Mediterranean corals and a clasp of 18k gold set with a faceted coral. Pearl diam. app. 9 mm. L. app. 50.5 cm. DKK 15,000–20,000 / € 2,000–2,700

994
RUBEN SVART
A diamond ring set with numerous baguette-cut diamonds weighing a total of app. 2.70 ct., mounted in 18k gold. Colour: F-G. Clarity: VVS. Size app. 51. DKK 15,000–20,000 / € 2,000–2,700

995
CARTIER
A diamond pendant in the shape of a heart set with numerous brilliant-cut diamonds, mounted in 18k white rose gold. W. 1.8 cm. L. incl. eye-let 2.2 cm. Ref. no. 927654. Signed Cartier 1991. DKK 15,000–18,000 / € 2,000–2,400

996
A garnet jewellery set comprising a bangle set with two pear-shaped spessartine garnets flanked by a brilliant-cut diamond and a pendant set with a pear-shaped spessartine garnet flanked by four brilliant-cut diamonds, mounted in 14k gold. Weight in total app. 23 g. Bangle diam. 5.6 cm. L. pendant 3.8 cm. Accompanied by a necklace of 14k gold. L. 38.5 cm. (3) *Pendant with an openable eye-let to be worn on a pearl necklace.* DKK 20,000–25,000 / € 2,700–3,350

997
A necklace of 18k gold. Weight app. 45.5 g. W. 6 mm. L. 70 cm. DKK 12,000–15,000 / € 1,600–2,000



993



994



995



996

997



1000

A pair of diamond ear studs each set with an old mine-cut diamond weighing a total of app. 4.80 ct., mounted in 14k white gold. Colour: F-G. Clarity: SI1-SI2. (2)

Accompanied by certificate from Peter Kynde.

Insurance value DKK 250,000. DKK 150,000 / € 20,000

998

A graduated diamond necklace set with numerous brilliant- and old mine-cut diamonds weighing a total of app. 9.00 ct., mounted in platinum. Colour: H-I. Clarity: VS-SI. L. 41 cm. Circa 1950-60.

Accompanied by case.

DKK 100,000-120,000 / € 13,500-16,000

999

An Art Déco diamond brooch in the shape of a bow set with an older brilliant-cut diamond weighing app. 1.25 ct. encircled by numerous rose-, older brilliant- and old-cut diamonds weighing a total of app. 3.50 ct., mounted in platinum. Center stone: Colour: I. Clarity: VS2. L. 6.8 cm.

DKK 20,000-25,000 / € 2,700-3,350

1001

A diamond ring set with a brilliant-cut diamond weighing app. 4.00 ct. and numerous brilliant-cut diamonds, mounted in 18k white gold. Colour: K Clarity: P1. Size 53.

Accompanied by case.

DKK 100,000-150,000 / € 13,500-20,000

1002

W O R B O Y S

A diamond bracelet set with numerous brilliant-cut diamonds weighing a total of app. 4.90 ct., mounted in 18k matted white gold. Colour: I-J. Clarity: VS-P. Weight app. 58 g. W. 14 mm. L. 18 cm.

Accompanied by case.

DKK 25,000-30,000 / € 3,350-4,000



998



999



1000



1001



1002



1003

A diamond necklace set with numerous brilliant-cut diamonds weighing a total of 20.06 ct., mounted in 18k white gold. Colour: H. Clarity: P1. L. 42 cm. Accompanied by case and certificate from Hartmann's. Insurance value DKK 278,000.

DKK 125,000–150,000 / € 17,000–20,000

1004

A pearl and diamond ring set with three cultured South Sea and Tahiti pearls and numerous fancy- and brilliant-cut diamonds weighing a total of app. 0.80 ct., mounted in 18k rose and white gold. Colour: I-G clarity: VS-P. W. 3.2 cm. Size 60.

DKK 18,000–20,000 / € 2,400–2,700

1005

A pair of pearl and diamond ear pendants each set with numerous cultured fresh water pearls and numerous brilliant-cut diamonds weighing a total of app. 1.33 ct., mounted in 18k white gold. L. 7 cm. W. 2.5 cm. Pearl diam. app. 7–10 mm. (2)

DKK 30,000–35,000 / € 4,000–4,700



1003



1004



1005



1006

An important pearl necklace set with numerous Tahiti and Ming fresh water pearls and a clasp of 18k white and rose gold. Pearl diam. app. 12.9-13.9 mm. L. 46 cm. *DKK 40,000-60,000 / € 5,350-8,050*

1007 *

A pair of diamond ear studs each set with five Natural Fancy Pink diamonds weighing a total of app. 0.45 ct. encircled by five rose-cut diamonds weighing a total of app. 3.23 ct., mounted in 18k rose and white gold. Colour: F-G. Clarity: VS W. app. 17 mm. (2)

Retail price DKK 255,000.

DKK 150,000-200,000 / € 20,000-27,000

1008 *

A pair of ear pendants each set with a cushion-cut diamond weighing a total of app. 4.00 ct. flanked by two heart-shaped Natural Fancy Intense and Natural Fancy Pink diamonds weighing a total of app. 0.18 ct. and numerous brilliant-cut pink diamonds weighing a total of app. 0.26 ct., mounted in platinum and 18k gold. L. 3 cm. (2)

Retail price DKK 1,020,000.

DKK 600,000-800,000 / € 80,500-105,000

1009

A kunzite, morganite and diamond ring set with a fancy-cut kunzite weighing app. 17.38 ct. and two emerald-cut morganites weighing a total of app. 2.88 ct. encircled by numerous brilliant-cut diamonds weighing a total of app. 0.95 ct., mounted in 18k rose and white gold. Size 54.5.

DKK 25,000-30,000 / € 3,350-4,000

1010

WILLY JUNGET

A diamond ring set with numerous brilliant-cut diamonds weighing a total of app. 1.40 ct., mounted in 14k white gold. Colour: H-I. Clarity: VS-SI. W. 18 mm. Size 52.

Accompanied by case.

DKK 10,000-12,000 / € 1,350-1,600

1011 *

A diamond bracelet set with numerous brilliant-cut diamonds weighing a total of app. 11.63 ct., mounted in 18k gold. Colour: K-M. Clarity: VS-P. L. app. 17.7 cm.

DKK 120,000-130,000 / € 16,000-17,500



1006



1007



1008



1009



1010



1011



1012
A pair of tourmaline and diamond ear studs each set with a fancy-cut tourmaline weighing a total of app. 1.20 ct. encircled by numerous brilliant-cut diamonds weighing a total of app. 0.67 ct., mounted in 18k white gold. Colour: H. Clarity: VVS. W. 6 mm. (2) DKK 12,000–15,000 / € 1,600–2,000

1013
RUBEN SVART
A diamond ring set with a brilliant-cut diamond weighing app. 1.62 ct. encircled by numerous brilliant-cut diamonds weighing a total of app. 2.30 ct., mounted in 18k white gold. Center stone: Colour: H. Clarity: VVS2. Size 59.
Accompanied by Hartmann's certificate no. 14973 and Gem Trade Laboratory certificate no. 8708152.
DKK 50,000–75,000 / € 6,700–10,000

1014
MAUBOUSSIN
A topaz and diamond ring set with a fancy-cut topaz encircled by numerous brilliant-cut diamonds, mounted in 18k white gold. Ref. no. N7081. W. 13 mm. Size 54. DKK 18,000–20,000 / € 2,400–2,700

1015
REESLEV
A diamond bangle set with numerous brilliant-cut diamonds weighing a total of app. 0.80 ct., mounted in 14k white gold. Weight app. 30 g. W. 6 mm. Diam. 4.8 cm. DKK 18,000–20,000 / € 2,400–2,700

1016
CARTIER
A "Love" bangle of 18k white gold. Signed Cartier. Ref. no. MEU970. Diam. app. 6.8 cm. Size 21. 2021. *Accompanied by original case and certificate.*
Retail price DKK 44,100.
DKK 15,000–20,000 / € 2,000–2,700

1017
A diamond bracelet set with numerous brilliant-cut diamonds weighing a total of app. 7.37 ct., mounted in 18k white gold. Colour: F-G. Clarity: VVS. L. 17.7 cm.
Cut grade: Hearts & Arrows.
DKK 80,000–90,000 / € 10,500–12,000





1018

A Russian diamond and pearl brooch, of intertwined S-shaped form, set with old-cut diamonds weighing a total of app. 1.55 ct. and presumably natural pearls, mounted in 14k gold. Indistinct maker's mark, St. Petersburg town mark, 56 standard. Circa 1900. L. 3.8 cm.

Provenance: Danish private ownership. Belonged to the seller's deceased aunt, who lived in France.

DKK 12,000–15,000 / € 1,600–2,000

1019

A Russian Belle Époque diamond and pearl pendant, of garland form, leaf wreath centre with an old brilliant-cut diamond, flanked by bows with long looped ribbons, below two presumably natural pearls hanging on links in asymmetrical lengths, overall set with numerous old-, single- and rose-cut diamonds, mounted in platinum and 18k gold with a platinum chain. Apparently unmarked. Circa 1900. W. 7 cm. L. 7 cm. L. Chain 31 cm. Accompanied by original reddish leather case with gold print, lined with blue velvet and silk. (2)

Provenance: Danish private ownership.

DKK 20,000–25,000 / € 2,700–3,350



1018

1020

A pair of aquamarine and diamond ear studs each set with an emerald-cut aquamarine weighing a total of app. 11.50 ct. and numerous brilliant-cut diamonds weighing a total of app. 1.58 ct., mounted in 18k white gold. L. 2.5 cm. W. 1.9 cm. (2)

DKK 20,000–25,000 / € 2,700–3,350

1021

An aquamarine and diamond ring set with an emerald-cut aquamarine weighing app. 6.87 ct. encircled by six baguette-cut and numerous brilliant-cut diamonds weighing a total of app. 0.74 ct., mounted in 18k white gold. Size 54.

DKK 15,000–20,000 / € 2,000–2,700

1022

A diamond ring set with a brilliant-cut diamond weighing 2.00 ct. flanked by numerous brilliant-cut diamonds weighing a total of app. 0.66 ct., mounted in 18k white gold. Colour: E-F. Clarity: VVS-VS. Size 54.

The center stone is accompanied by GIA certificate no. 2464031048.

Cut grade: Hearts & Arrows.

DKK 225,000–250,000 / € 30,000–33,500

1023

JOYERA PEREZ FERNANDEZ
A pair of diamond brooches each set with numerous baguette-old-cut and old brilliant-cut diamonds weighing a total of app. 4.50 ct., mounted in platinum. Colour: G-I. Clarity: SI-P. 2.4 x 3 cm. Spain circa 1920s. (2)

Accompanied by original case.

DKK 30,000–40,000 / € 4,000–5,350



1019



1020



1021



1022



1023



1026 *
 A pair of diamond ear studs each set with seven brilliant-cut diamonds weighing a total of 2.67 ct., mounted in 18k white gold. Colour: F-G. Clarity: VVS-VS. L. app. 2.9 cm. (2)
 DKK 40,000–50,000 / € 5,350–6,700

1024
MARCO BICEGO

A "Goa" jewellery set comprising a necklace and a bracelet set with numerous brilliant-cut diamonds respectively weighing a total of app. 0.22 ct. and 0.56 ct., mounted in 18k gold and white gold. L. 41.5 and 17.5 cm. (2)

Accompanied by two original cases.

DKK 10,000–15,000 / € 1,350–2,000

1025

A diamond necklace with a pendant set with a brilliant-cut diamond weighing app. 1.15 ct. encircled by numerous brilliant-cut diamonds weighing a total of app. 0.16 ct., mounted in 18k white gold. Colour: K. Clarity: P1. Diam. app. 9.5 mm. L. app. 42.5 cm. DKK 15,000–20,000 / € 2,000–2,700

1027
CARTIER

A zodiac 'Cancer' emerald and diamond pendant set with two cabochon emeralds and numerous brilliant-cut diamonds, mounted in 18k gold and white gold. W. 5.5 cm. L. incl. eye-let 6.2 cm. Signed Cartier London. DKK 20,000–25,000 / € 2,700–3,350

1028
BOUCHERON

A diamond bracelet set with numerous brilliant-cut diamonds weighing a total of app. 6.20 ct., mounted in 18k white gold. Serial no. PBT02753. Colour: G-F. Clarity: VVS-VS1. L. 16.4 cm. *Accompanied by original case and travel pouch.* *Accompanied by two extra links set with two brilliant-cut diamonds.*

DKK 30,000–40,000 / € 4,000–5,350





1029
LAPPONIA

A jewellery set of 14k gold and white gold comprising a necklace, bracelet and a pair of ear studs. Weight in total app. 82 g. L. 19.3 and 44.5 cm. (4)

Accompanied by two original leather jewellery pouches.
DKK 20,000–25,000 / € 2,700–3,350

1030

A pair of diamond ear pendants each set with seven old mine-cut diamonds weighing a total of app. 2.85 ct., mounted in 18k gold. Colour: G-I. Clarity: VS-SI. L. 19 mm. (2)

DKK 22,000–25,000 / € 2,950–3,350

1031

A diamond ring set with an old mine-cut diamond weighing app. 0.78 ct. encircled by numerous old mine-cut diamonds weighing a total of app. 1.59 ct., mounted in 18k gold. Colour: H-I. Clarity: VS-P. Size 54. DKK 32,000–35,000 / € 4,300–4,700





1032
SCHOEFFEL

An important and rare South Sea pearl necklace set with numerous fine cultured South Sea pearls and a diamond clasp set with numerous brilliant-cut diamonds weighing a total of app. 1.92 ct., mounted in 18k gold. Colour: F. Clarity: VVS. L. 88 cm. Clasp 1 cm.

The pearls are from the oyster species: *Pinctada Maxima* and with origin of Australia.

The pearl quality is rare with a Perfect-Very Slight Imperfections upon the surface and a Fine lustre. Accompanied by Schoeffel certificate no. 101.01-1747188 and original case. Accompanied by jewellery appraisal from Bodil Binner. Estimated remanufacturing price DKK 1,480,000. 2012. DKK 400,000-500,000 / € 53,500-67,000





1033

A diamond tiara set with numerous pear-shaped, marquise- and brilliant-cut diamonds weighing a total of app. 20.52 ct., mounted in 14k white gold. W. app. 3.5-26.5 mm. L. 32 cm. (2)

The tiara can be divided in two parts and can be worn as a diamond necklace.

DKK 300,000–400,000 / € 40,000–53,500

1034

A pair of pearl and diamond ear pendants each set with two cultured South Sea pearls encircled by twelve rose-cut diamonds weighing a total of app. 0.89 ct. and numerous brilliant-cut diamonds weighing a total of app. 1.30 ct., mounted in 18k white gold. Colour: H. Clarity: SI. Pearl diam. app. 10-13 mm. L. 3 cm. (2)

DKK 80,000–100,000 / € 10,500–13,500





1035

A pair of emerald and diamond ear studs each set with numerous baguette and carré-cut emeralds weighing a total of app. 5.12 ct. and numerous brilliant-cut diamonds weighing a total of app. 0.36 ct., mounted in 18k white gold. Colour: H-G. Clarity: VS1-SI. L. 4 cm. (2)

DKK 18,000–20,000 / € 2,400–2,700

1036

A pair of ear pendants each set with a fancy-cut emerald weighing a total of app. 0.18 ct., numerous brilliant-cut diamonds weighing a total of app. 0.28 ct., polished onyx weighing a total of app. 22.49 ct., black enamel and a polished disc of rock crystal, mounted in 18k white gold. L. 5.7 cm. (2)

DKK 18,000–20,000 / € 2,400–2,700

1037 *

An emerald and diamond ring set with a fancy-cut emerald weighing app. 3.14 ct. encircled by numerous brilliant-cut diamonds weighing a total of app. 0.42 ct., mounted in 18k partly black rhodium-plated white gold. Size 54.

DKK 20,000–25,000 / € 2,700–3,350

1038

An emerald and diamond bangle set with two cabochon emeralds weighing a total of app. 8.49 ct., black enamel and numerous baguette- and brilliant-cut diamonds weighing a total of app. 4.32 ct., mounted in 18k white gold. Weight app. 34 g.

DKK 80,000–100,000 / € 10,500–13,500

1039

An emerald and diamond bracelet set with numerous pear-shaped emeralds weighing a total of app. 3.91 ct. and numerous brilliant-cut diamonds weighing a total of app. 0.96 ct., mounted in 18k white gold. L. app. 19 cm.

DKK 30,000–35,000 / € 4,000–4,700

1040

An Art Déco diamond brooch set with numerous old-cut diamonds weighing a total of app. 3.50 ct., mounted in platinum. Colour: H-I. Clarity: VS. L. app. 7.3 cm. Circa 1920–30.

DKK 20,000–25,000 / € 2,700–3,350



1035



1036



1037



1038



1039



1040



1041

A three-strand pearl necklace set with numerous cultured akoya pearls and a diamond clasp set with numerous single- and brilliant-cut diamonds weighing a total of app. 1.40 ct., mounted in 14k white gold. Pearl diam. 7-8 mm. Clasp W. 2.7 cm.

DKK 15,000–18,000 / € 2,000–2,400

1042

A pair of solitaire diamond ear studs each set with a brilliant-cut diamond weighing a total of app. 2.01 ct., mounted in 18k white gold. Colour: G-H. Clarity: SI-I. W. 6 mm. (2)

DKK 40,000–50,000 / € 5,350–6,700

1043

HARTMANN'S

A diamond ring set with a princess-cut diamond weighing 1.02 ct. and a brilliant-cut diamond weighing app. 0.09 ct., mounted in 14k white gold. Colour: F. Clarity: VS. Size 52. 2008.

Accompanied by HRD certificate 07012886016.

Insurance value DKK 115,600.

DKK 20,000–25,000 / € 2,700–3,350

1044

VIVIANNA TORUN BÜLOW-HÜBE

b. Sverige 1927, d. 2004

A "Torun" bangle set with numerous brilliant-cut diamonds weighing a total of app. 0.08 ct., mounted in 18k rose and white gold. Made for Georg Jensen. Size M.

Accompanied by case from P. Hertz.

DKK 12,000–15,000 / € 1,600–2,000

1045

A Belle Époque diamond bangle set with six cultured pearls encircled by numerous rose-cut diamonds, mounted in 18k gold and silver. Pearl diam. app. 5 mm. W. 11.5 mm. Diam. app. 5 x 5.6 cm. Circa 1900. DKK 18,000–20,000 / € 2,400–2,700

1046

An openable bangle set with numerous oval-cut sapphires weighing a total of app. 3.70 ct. flanked by numerous old- and single-cut diamonds weighing a total of app. 0.45 ct., mounted in 14k gold. W. 11.5 mm.

Accompanied by case and an appraisal from Henry Birks & Sons, Canada 1997.

Insurance value Canadian Dollars 6,000.

DKK 10,000–12,000 / € 1,350–1,600



1041



1042



1043



1044



1045



1046



1047

A sapphire and diamond necklace set with numerous oval-cut sapphires weighing a total of app. 5.38 ct. encircled by numerous brilliant-cut diamonds weighing a total of app. 2.50 ct., mounted in 18k white gold. Colour: E. Clarity: VVS. L. 41-46.6 cm.

DKK 40,000-45,000 / € 5,350-6,050

1048

A pair of tanzanite and diamond ear pendants each set with a pear-shaped tanzanite and faceted tanzanite briolettes weighing a total of app. 26 ct. and numerous single-cut diamonds weighing a total of app. 0.35 ct., mounted in 18k white gold. L. 5.5 cm. (2)

DKK 12,000-15,000 / € 1,600-2,000

1049

A diamond ring set with a brilliant-cut diamond weighing 0.95 ct., mounted in 14k white gold. Colour: E. Clarity: VVS. Size 52-55.

Accompanied by IGI certificate no. F1136598. 1986.

The ring shank is provided with a spring to make the size flexible. DKK 12,000-15,000 / € 1,600-2,000

1050

A sapphire and diamond bracelet set with numerous cabochon star sapphires and brilliant-cut diamonds weighing a total of app. 0.65 ct., mounted in platinum. Colour: H. Clarity: VS-SI. L. 18 cm.

DKK 10,000-12,000 / € 1,350-1,600

1051

TIFFANY & CO.

A "Swing" diamond bracelet set with numerous brilliant-cut diamonds weighing a total of app. 4.51 ct., mounted in platinum. Colour: G. Clarity: VS. W. 19 mm. L. 17 cm.

Accompanied by receipt and appraisal.

Retail price £ 11,000. 2008.

DKK 30,000-40,000 / € 4,000-5,350

1052

A diamond bracelet set with numerous brilliant-cut diamonds weighing a total of app. 3.73 ct., mounted in 18k white gold. Colour: G-H. Clarity: VS-P. L. 17.8 cm.

DKK 40,000-50,000 / € 5,350-6,700



1047



1048



1050



1049



1051



1052



1053 ^{ARR}
BENT KNUDSEN

b. Fredericia 1924, d. Kolding 1997

An amethyst necklace set with numerous cabochon amethysts, mounted in 14k gold. Design no. 8. Weight app. 37.5 g. L. 38 cm.

DKK 12,000–15,000 / € 1,600–2,000

1054

A pair of diamond ear studs each set with a brilliant-cut diamond weighing a total of 1.14 ct., mounted in 18k white gold. Colour: E-F. Clarity: SI. (2)

Accompanied by HRD report no. 230000127343 and 230000048152. DKK 18,000–20,000 / € 2,400–2,700

1055

A ruby and diamond brooch set with eight oval-cut rubies encircled by numerous old-, single- and brilliant-cut diamonds, mounted in platinum and 14k white gold. Colour: H-F. Clarity: VS2-P. L. 4.2 cm. Circa 1920s.

DKK 15,000–18,000 / € 2,000–2,400

1056

A Russian diamond, ruby and sapphire brooch, circular design with two horse shoes, set with old-cut diamonds, circular-cut and cabochon sapphires and rubies, mounted in 14k gold. C. E. Bolin, St. Petersburg town mark, 56 standard. Diam. 2.3 cm.

Provenance: Danish private ownership.

DKK 20,000–25,000 / € 2,700–3,350

1057

A diamond bracelet set with numerous Light Pink-Natural Fancy Light Pink brilliant-cut diamonds weighing a total of app. 5.02 ct., mounted in 14k rose gold. L. 18.4 cm.

Accompanied by case and AIG certificate no. J3010954426. DKK 40,000–50,000 / € 5,350–6,700

1058

A diamond bracelet set with numerous brilliant-cut diamonds weighing a total of app. 4.69 ct., mounted in 18k white gold. Colour: F-G. Clarity: VVS. L. 17.5 cm.

DKK 45,000–50,000 / € 6,050–6,700



1053

1054



1055



1056



1057



1058



1061

A pair of diamond ear studs each set with a brilliant-cut diamond weighing a total of app. 2.01 ct., mounted in 14k white gold. Colour: G. Clarity: VS1. (2)

Accompanied by HRD certificate no. 06004350033 and 06004522030.

DKK 40,000–50,000 / € 5,350–6,700

1062

A sapphire and diamond ring set with a cabochon star sapphire weighing app. 25.10 ct. encircled by numerous brilliant-cut diamonds weighing app. 0.60 ct., mounted in platinum. Colour: H-F. Clarity: VS-SI. Size 55.5.

DKK 20,000–25,000 / € 2,700–3,350

1063

A diamond bracelet set with numerous brilliant-cut diamonds weighing a total of app. 4.06 ct., mounted in 18k white gold. Colour: G-H. Clarity: VS-SI. L. app. 18 cm.

DKK 35,000–40,000 / € 4,700–5,350

1059

A diamond necklace set with numerous brilliant- and single-cut diamonds weighing a total of 2.99 ct., mounted in 18k white gold. Colour: H-I. Clarity: VS-P1. L. 42.5 cm.

Accompanied by certificate from Hartmann's. Insurance value DKK 94,900.

DKK 15,000–20,000 / € 2,000–2,700

1060

A pair of pearl and diamond ear pendants each set with a cultured Baroque fresh water pearl and numerous brilliant-cut diamonds weighing a total of app. 1.02 ct., mounted in 18 white gold. Colour: H-G. Clarity: VS-SI. (2)

DKK 15,000–20,000 / € 2,000–2,700



1059



1060



1061



1062



1063



1067
A sapphire and diamond ring set with an oval-cut natural unheated sapphire weighing app. 10.78 ct., encircled by numerous brilliant-cut diamonds weighing a total of app. 3.61., mounted in 18k white gold. Colour: H-G. Clarity: VVS-SI. Size 54. W. 1.9 cm.
Accompanied by CISGEM certificate no. 26057.
DKK 250,000–300,000 / € 33,500–40,000

1064
A diamond pendant set with a brilliant-cut diamond weighing app. 1.75 ct., mounted in 14k white gold. Colour: H. Clarity: VS2. L. pendant app. 12 mm. Accompanied by a necklace of 14k white gold. L. 38.5 cm.
DKK 35,000–40,000 / € 4,700–5,350

1065
A pair of sapphire and diamond ear studs each set with an oval-cut sapphire weighing a total of app. 1.40 ct. encircled by numerous brilliant-cut diamonds weighing a total of app. 0.68 ct., mounted in 18k white gold. L. 1.3 cm. (2)
DKK 12,000–15,000 / € 1,600–2,000

1066
TIFFANY & CO.
A pair of "Double Hoop" diamond ear pendants each set with numerous brilliant-cut diamonds weighing a total of app. 2.70 ct., mounted in platinum. Colour: F-G. Clarity: VS. L. app. 16 mm. (2)
Accompanied by original receipt.
Retail price US dollar 11,121. 1999.
DKK 20,000–25,000 / € 2,700–3,350

1068
CARTIER
A "Lanieres" eternity diamond ring set with numerous brilliant-cut diamonds, mounted in 18k white gold. Ref. no. BP9274. Size 51.
DKK 15,000–18,000 / € 2,000–2,400

1069
CARTIER
A "Love" diamond bangle set with four brilliant-cut diamonds, mounted in 18k white gold. Diam 5.6 cm. W. 6 mm.
Accompanied by original case and screwdriver.
Accompanied by receipt from 2015. Retail price CHF 9,850.
DKK 40,000–50,000 / € 5,350–6,700

1070
A diamond bracelet set with numerous brilliant-cut diamonds weighing a total of app. 4.89 ct., mounted in 18k white gold. Colour: E-F. Clarity: VVS. L. 17.8 cm.
Cut grade: Hearts & Arrows.
DKK 55,000–60,000 / € 7,400–8,050





1071

A chunky "Byzantine Chain" of 18k gold. W. 7.5 mm. Weight app. 195 g. L. 60.5 cm.

DKK 60,000–70,000 / € 8,050–9,400

1072

An emerald and diamond ring set with a marquise-cut emerald weighing app. 1.50 ct. encircled by numerous baguette-cut diamonds weighing a total of app. 2.50 ct., mounted in 18k gold. Colour: F-G. Clarity: VS. Size 52.

Accompanied by ALGT report no. 92095791.

DKK 32,000–35,000 / € 4,300–4,700

1073

An opal, sapphire, tsavorite and diamond ring set with a cabochon opal weighing app. 5.28 ct. flanked by two baguette-cut sapphires weighing a total of app. 0.26 ct. encircled by numerous circular-cut tsavorites and numerous brilliant-cut diamonds weighing a total of app. 0.16 ct., mounted in 18k gold. Size 52. *DKK 10,000–15,000 / € 1,350–2,000*

1074

**A. MICHELSEN,
KNUD V. ANDERSEN**

A wide bracelet of 14k matted gold. Weight app. 103 g. W. 24 mm. L. app. 19 cm. Made for A. Michelsen.

Accompanied by original case.

DKK 25,000–30,000 / € 3,350–4,000

1075

A. MICHELSEN

A wide bracelet of 18k matted gold and white gold. W. 18 mm. L. 18.8 cm. Circa 1980's.

Accompanied by original case.

DKK 20,000–25,000 / € 2,700–3,350



1071



1072



1073



1074



1075



1076
OLE LYNNGAARD
 A 14k "New Linie" gold clasp with a diamond bond set with numerous brilliant-cut diamonds weighing a total of app. 0.12 ct., mounted in 14k white gold. Accompanied by a six-strand necklace of 14k gold and oxidised silver. L. clasp 6.5 cm. Necklace 70 cm. (3) *DKK 12,000–15,000 / € 1,600–2,000*

1077
 A diamond ring set with numerous brilliant-cut diamonds weighing a total of app. 2.60 ct., mounted in platinum. Size 58. *DKK 35,000–40,000 / € 4,700–5,350*

1078
 A diamond ring set with numerous brilliant-cut diamonds weighing a total of app. 1.60 ct., mounted in 18k gold. Colour: H. Clarity: VVS. Size app. 55. *DKK 20,000 / € 2,700*

1079
OLE LYNNGAARD
 A "Sweet Drop" bracelet of dark brown leather set with two Sweet Drop charms of 18k gold in the shape of hearts and faceted smoky quartz, "Sweet Spot" charm of 18k gold in the shape of a heart set with numerous brilliant-cut diamonds weighing a total of app. 0.20 ct. as well as a charm in the shape of a frog of 14k gold. L. 39 cm. Charms 8-19 mm. (5) *DKK 15,000 / € 2,000*

1080
OLE LYNNGAARD
 A diamond bracelet with heartshaped links set with numerous brilliant-cut diamonds weighing a total of app. 0.27 ct., mounted in 14k matted gold and white gold. Colour: G. Clarity: VS. L. 19 cm. *DKK 25,000–30,000 / € 3,350–4,000*



1076



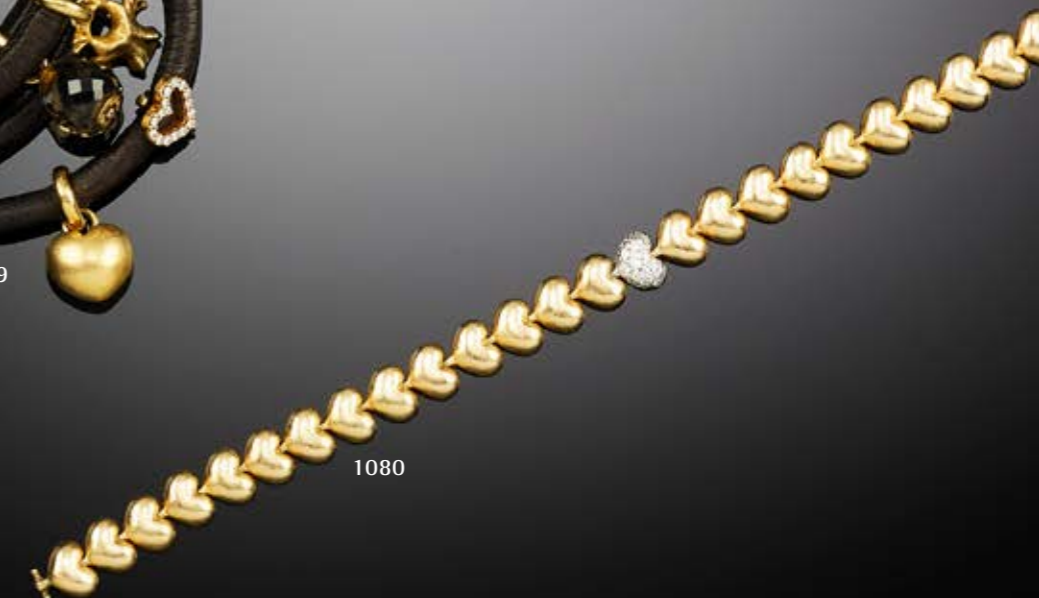
1077



1078



1079



1080



1082
BULGARI
 A "Cicladi" necklace of 18k gold. Weight app. 14 g.
 L. 38-45 cm. Pendant app. 3.4 cm.
 DKK 12,000-15,000 / € 1,600-2,000

1083 *
 A pearl pendant set with a South Sea cultured pearl weighing app. 2.00 ct. and numerous brilliant-cut diamonds weighing a total of app. 1.09 ct., mounted in 18k white gold. Accompanied by chain of 18k white gold. Colour: I-G. Clarity: VS2-SI. L. 45.5 cm. (2) DKK 18,000-20,000 / € 2,400-2,700

1081
 An important diamond necklace set with a heart-shaped brilliant-cut natural fancy grayish yellowish green diamond weighing app. 0.88 ct., a pear-shaped brilliant-cut natural light pink Argyle diamond weighing app. 0.50 ct., a cushion-cut natural fancy intense yellow diamond weighing app. 0.50 ct., numerous brilliant-cut white diamonds weighing a total of app. 1.10 ct. and brilliant-cut natural pink Argyle diamonds weighing a total of app. 0.10 ct., mounted in 14k rose and white gold. Flexible length. L. app. 44 cm.
 Accompanied by a case and GIA report nos. 2171108514 and 6192722000, IGI report no. 414091394 indicating, "Natural Fancy Grayish Yellowish Green", "Natural Light Pink" and "Natural Fancy Intense Yellow". 2015, 2018 and 2020.
 DKK 180,000-200,000 / € 24,000-27,000

1084 CARTIER
 A "Trinity" diamond ring set with numerous brilliant-cut diamonds weighing a total of app. 0.46 ct., mounted in 18k tri-coloured gold. Colour: F-G. Clarity: VVS-VS. Ref. no. 0A7295. Size 50.
 DKK 20,000-25,000 / € 2,700-3,350

1085
 A diamond bracelet set with numerous brilliant-cut diamonds weighing a total of app. 6.47 ct., mounted in 18k gold. Colour: J. Clarity: VVS. L. 17.2 cm.
 DKK 50,000-60,000 / € 6,700-8,050

1086
 A bracelet of 18k gold. Weight app. 47 g. W. 7 mm. L. 20 cm.
 DKK 15,000 / € 2,000



1081
1082

1084

1085

1086



1087
B O L O U

A tanzanite and diamond ring set with a rare modified oval-cut tanzanite weighing app. 47.31 ct. and numerous brilliant-cut diamonds weighing a total of app. 0.45 ct., mounted in 18k white gold. Colour: F-G. Clarity: VVS-VVS1. Weight app. 14 g. Size 52. *DKK 100,000-125,000 / € 13,500-17,000*





1088

A pair of ear pendants each set with numerous cabochon pink sapphires weighing a total of app. 2.98 ct., numerous cabochon pink opals weighing a total of app. 4.84 ct., numerous rose-cut diamonds weighing a total of app. 1.23 ct., numerous brilliant-cut diamonds weighing a total of app. 1.63 and two cultured South Sea pearls, mounted in 18k rose gold. Pearl diam. 12 mm. Colour: G. Clarity: SI. Weight app. 22 g. L. 5 cm. (2)

Provenance: Bridgerton Young Queen Charlotte.

Accompanied by case.

DKK 175,000–200,000 / € 23,500–27,000



1088

Designer Bags

Online Auction

13 December 2023 at bruun-rasmussen.dk
For more information contact Emma Marie Huus-Thomsen
+45 8818 1179 / eht@bruun-rasmussen.dk



BRUUN RASMUSSEN
PART OF THE BONHAMS NETWORK

HANDBAGS

Monday 11 December
Lot 1089 - 1105





1089

1089
CHRISTIAN DIOR
 A "Lady Dior" bag of dark grey quilted canvas with gold tone hardware, two handles, detachable shoulder strap and one compartment with two interior pockets. H. 20 x W. 24 x D. 12 cm. Accompanied by original dust bag and dust bag for charm.
 DKK 18,000–20,000 / € 2,400–2,700

1091
LOUIS VUITTON
 A "Twist MM" bag of khaki green Epi leather embellished with white flowers, silver tone hardware, chain strap, twist lock, two interior pockets and beige suede lining. Accompanied by a mirror. H. 18 x W. 24 x D. 10 cm. 2018. Accompanied by original box, dust bag, booklet and receipt from 2018.
 DKK 15,000–18,000 / € 2,000–2,400



1091

1090
CHANEL
 A "Large XXL Classic Bag" of dark grey quilted leather with silver tone hardware, double chain strap, one exterior back pocket, CC turn lock, two compartments with three interior pockets and grey fabric lining. H. 28 x W. 44 x D. 16 cm. 2020. Accompanied by original box, dust bag, proof of purchase and booklet.

This catalog number is sold at the request of a lawyer, insurance company or public authority.
 DKK 20,000–25,000 / € 2,700–3,350



1090



1092

1092
CHANEL
 A "Single Flap" bag of dark brown quilted leather with silver tone hardware, CC turn lock, double chain strap, one exterior back pocket, two interior pockets and dark brown leather lining. H. 21 x W. 31 x D. 9 cm. 2008–2009.
 DKK 30,000 / € 4,000



1093

1093
CHANEL

A "Maxi Classic Double Flap Bag" of black quilted Caviar leather with gold tone hardware, double chain strap, one exterior back pocket, CC turn lock, four interior pockets and burgundy leather lining. H. 23 x W. 33 x D. 9 cm. 2019.

Accompanied by original box, dust bag and booklet.

This catalog number is sold at the request of a lawyer, insurance company or public authority.

DKK 30,000–40,000 / € 4,000–5,350



1095

1095
CHANEL

A "Grand Shopping Tote" bag of black quilted patent leather with silver tone hardware, two handles, one exterior back pocket, two compartments divided by a zipped pocket, two interior pockets and black fabric lining.

H. 24 x W. 35 x D. 13 cm. 2009–2010.

Accompanied by Carte d'authenticité.

DKK 15,000–18,000 / € 2,000–2,400



1094

1094
CHANEL

A "Maxi Flap" bag of black quilted Caviar leather with gold tone hardware, CC turn lock, double chain strap, one exterior back pocket, two interior pockets and black leather lining.

H. 22 x W. 31 x D. 9 cm. 1994–1996.

DKK 30,000 / € 4,000



1096

1096
CHANEL

A "Medallion" bag of black quilted Caviar leather with silver tone hardware, two handles, one exterior back pocket, one zipped compartment with two interior pockets and black leather lining. H. 24 x W. 31 x D. 14 cm. 2000–2002.

Accompanied by original dust bag.

DKK 12,000–15,000 / € 1,600–2,000



1097

1097
CHANEL
A vintage bag of beige quilted leather with gold tone hardware, two chain straps, two exterior pockets, one compartment with two interior zipped pockets and beige leather lining.
H. 22 x W. 30 x D. 9 cm. 1986-1988.
Accompanied by original dust bag.
DKK 10,000-12,000 / € 1,350-1,600

1099
CHANEL
A "Triple CC Tote" bag of brown Caviar leather with gold tone hardware, two handles, one exterior pocket, one compartment with a magnetic closure, two interior zipped pockets and brown leather lining.
H. 32 x W. 32 x D. 8 cm. 1991-1994.
DKK 20,000 / € 2,700



1099



1098

1098
CHANEL
A bag of brown quilted suede with gold tone hardware, two handles, one compartment with a magnetic closure, four interior pockets and brown monogram fabric lining.
H. 19 x W. 29 x D. 10 cm. 2002-2003.
Accompanied by Carte d'authenticité, certificate of authenticity and dust bag from The Brand Collector.
DKK 12,000-15,000 / € 1,600-2,000



1100

1100
CHANEL
A "Triple CC Tote" bag of dark brown Caviar leather with gold tone hardware, two handles, two exterior pockets, one zipped compartment with two interior zipped pockets and dark brown leather lining.
H. 33 x W. 35 x D. 10 cm. 1994-1996.
DKK 20,000 / € 2,700

1101
CHANEL

A bag of black quilted leather with gold tone hardware, two chain straps, one exterior front pocket, one zipped compartment with two interior pockets and black leather lining.

H. 18 x W. 29 x D. 8 cm. 2002-2003.
Accompanied by original box, dust bag and Carte d'authenticité.

DKK 15,000-18,000 / € 2,000-2,400



1101



1102

1102
CHANEL

A "Filigree" backpack of black quilted Caviar leather with gold tone hardware, two adjustable straps, one compartment with a magnetic and drawstring closure, one interior zipped pocket and pink leather lining.

H. 24 x W. 21 x D. 11 cm. 2021.

Accompanied by original box, dust bag, booklet, ribbon, Carte d'authenticité and receipt from 2021.

This catalog number is sold at the request of a lawyer, insurance company or public authority.

DKK 15,000-18,000 / € 2,000-2,400

1103
CHANEL

A "Top Handle Flap Bag" of beige coated canvas with gold tone hardware, wooden top handle, wooden CC turn lock, two interior pockets and grey fabric lining.

H. 20 x W. 24 x D. 10 cm. 2000-2002.
Accompanied by original box, dust bag and Carte d'authenticité.

DKK 20,000-25,000 / € 2,700-3,350



1103



1104

1104
CHANEL

A "Medallion" bag of purple Caviar leather with gold tone hardware, two handles, one exterior back pocket, one zipped compartment with two interior pockets and purple leather lining.

H. 15 x W. 31 x D. 15 cm. 2002-2003.

DKK 12,000-15,000 / € 1,600-2,000

1105
HERMÈS

A "Kelly 32" bag of black crocodileskin with gold tone hardware, short handle, three interior pockets and black leather lining. Accompanied by padlock with keys in clochette. The front straps are not original, as they have been replaced by an independent workshop and not by Hermès.

H. 23 x W. 33 x D. 12 cm. Circa 1970s.

Accompanied by a new dust bag.

This lot is subject to CITES export/import restrictions and can only be shipped to addresses within the EU or collected from one of our departments. Please contact the department for further details.

DKK 60,000 / € 8,050



1105

WRISTWATCHES

Monday 11 December 7 pm

Lot 1106 - 1177

DISCLAIMER

All wristwatches up for auction were in working condition at the time of their consignment and inspection, but they have not been tested over a longer period of time.

Since the wristwatches are in a used condition, no warranty is provided for their functionality or of the originality of any replaced parts in the wristwatches, such as the dial, hands, bezel, mechanical parts etc.

If a recent service history does not appear in the description of the individual wristwatch, we recommend the buyer have the watch serviced.





1106

1106
ROLEX
Model: Datejust 41
Reference: 126331
Movement: Automatic, cal. 3235
Material: 18k Everose gold and steel
Diameter: 41 mm
Bracelet: "Jubilee" bracelet of 18k Everose gold and steel
Circumference: App. 17 cm
Year: 2010s

*Case no. 126361
Caseback no. 2480
Serial no. KN398195
Movement no. 7V096646
Endlink no. 62611*

*This lot is being sold by the request of a lawyer, an insurance company or a public authority.
DKK 60,000–80,000 / € 8,050–10,500*



1107

1107
ROLEX
Model: Datejust
Reference: 116203
Movement: Automatic, cal. 3135
Material: 18k gold and steel
Diameter: 36 mm
Bracelet: "Jubilee" bracelet of 18k gold and steel
Circumference: App. 18.5 cm
Year: 2003-05

*Case no. 116203
Caseback no. 2080
Serial no. F504386
Movement no. 0552179
Endlink no. 63203
Folding clasp no. 63203*

*Accompanied by an older Rolex box and service papers from authorised retailer Klarlund 2020.
DKK 35,000–40,000 / € 4,700–5,350*

1108
ROLEX
Model: Royal Precision
Reference: 6426
Movement: Manual, cal. 1215
Material: Steel
Diameter: 34.5 mm
Bracelet: "Oyster" bracelet of steel
Circumference: app. 18.5 cm
Year: 1960

*Case no. 6426
Caseback no. 6427 IV59
Movement no. N28'930
Endlink no. 557 B
Bracelet no. 78350 19
Folding clasp no. 78350*

Accompanied by Rolex box, manual, additional brown alligator strap, service papers from authorized retailer Klarlund 2008 and 2015 and the original receipt of purchase from Klarlund 1960.

*This lot is subject to CITES export/import restrictions and can only be shipped to addresses within the EU or collected from one of our departments. Please contact the department for further details.
DKK 15,000–20,000 / € 2,000–2,700*



1108



1109

1109
ROLEX
Model: Oyster Perpetual "Bubbleback"
Reference: 2940
Movement: Automatic, cal. 630
Material: Steel
Diameter: 32 mm
Strap: Black calfskin strap
Buckle: Buckle of steel
Year: 1945

*Case back no. 2940
Serial no. 396536*

DKK 15,000–20,000 / € 2,000–2,700



1110

1110
OMEGA
Model: Seamaster 300
Reference: 23330412101001
Movement: Automatic, cal. 8400
Material: Steel
Diameter: 41 mm
Bracelet: Omega bracelet of steel
Circumference: App. 18 cm
Year: 2018

Accompanied by Omega box, Omega Nato strap, manual, pictogram card and certificate from authorised retailer Suarez 2018.

DKK 30,000–40,000 / € 4,000–5,350

1112
OMEGA
Model: Speedmaster
Reference: 311.30.42.30.01.006
Movement: Manual chronograph, cal. 1863
Material: Steel
Diameter: 42 mm
Bracelet: Omega bracelet of steel
Circumference: App. 18 cm
Year: 2005

Accompanied by Omega box.

DKK 30,000 / € 4,000



1112



1111

1111
OMEGA
Model: Railmaster
Reference: 2914-6
Movement: Manual, cal. 286
Material: Steel
Diameter: 38 mm
Bracelet: Fixo-flex bracelet of steel
Year: 1963

DKK 30,000–40,000 / € 4,000–5,350

1113
OMEGA
Model: Speedmaster “pre-moon”
Reference: 145.012
Movement: Manual chronograph, cal. 321
Material: Steel
Diameter: 42 mm
Bracelet: Omega bracelet of steel (ref. 1039/516)
Year: 1968

Provenance: Film photographer Rolf Rønne (1926-1997). Throughout 40 years of his life, Rønne made films with many well-known Danish film makers, including Theodor Christensen, Jørgen Leth, as well as Ole and Jørgen Roos. Rønne was mostly known for his many documentaries, some of which depicted the life of princess (now queen) Margrethe II. Moreover, he went on countless film excursions around the world - from Greenland to South America. Rønne gave himself the watch as a christmas present in the late 1960s and comes from his direct descendants.

Accompanied by later Omega bracelet (ref. 1171/1), extra end links (ref. 633), later tachymeter bezel, original handset and crown, original manual and certificate from authorised retailer Magasin, dated 23/12-1968.

DKK 40,000–50,000 / € 5,350–6,700



1113





1114

1114

ROLEX

Model: GMT-Master II

Reference: 126715CHNR

Movement: Automatic, cal. 3285

Material: 18k Everose gold

Diameter: 40 mm

Bracelet: "Oyster" bracelet of 18k Everose gold

Circumference: App. 19.5 cm

Year: 2020s

Case no. 126715

Caseback no. 2535

Serial no. R6X68801

Movement no. 084005E2

Endlink no. 79205

This lot is being sold by the request of a lawyer, an insurance company or a public authority.

DKK 150,000–200,000 / € 20,000–27,000



1115

1115

ROLEX

Model: GMT-Master

Reference: 16753

Movement: Automatic, cal. 3075

Material: 18k gold and steel

Diameter: 40 mm

Bracelet: "Jubilee" bracelet of 18k gold and steel

Circumference: App. 21 cm

Year: 1985

Accompanied by Rolex outer-box, later travel pouch and receipt for pressure test 2022.

Case no. 16753

Caseback no. 16750

Serial no. 8863154

Movement no. 1047608

Bracelet no. 50

Endlink no. 450

Folding clasp no. 62523H 18

DKK 60,000 / € 8,050

1116

HUBLOT

Model: Big Bang

Reference: 361.PC.3380.RC.1104

Movement: Quartz, ETA 955.102

Material: 18k gold and titanium

Diameter: 38 mm

Strap: Hublot rubber strap

Folding clasp: Hublot folding clasp of 18k gold and titanium

Year: 2011

Accompanied by Hublot box, manual and certificate from Hublot Rhodos 2011. DKK 80,000–100,000 / € 10,500–13,500



1116

1117

ROLEX

Model: Submariner

Reference: 116613LN

Movement: Automatic, cal. 3135

Material: 18k gold and steel

Diameter: 40 mm

Bracelet/strap: "Oyster" bracelet of 18k gold and steel

Circumference: App. 17 cm

Year: 2016

Case no. 116613

Caseback no. 2360

Movement no. U0632219

Serial no. 78E45792

Accompanied by Rolex box, manuals, hang-tags, three additional links and certificate from authorised retailer Serkos 2016.

DKK 70,000–80,000 / € 9,400–10,500



1117



1118

1118
PANERAI
Model: Luminor Power Reserve
Reference: PAM01090
Movement: Automatic, cal. OP XXXII
Material: Steel
Diameter: 44 mm
Strap: Brown Panerai strap
Buckle: Panerai buckle of steel
Year: 2017

Accompanied by Panerai box, manual, Panerai rubber strap, strap tool, polishing cloth, chronometer certificate, purchase receipt and certificate from authorised retailer Klarlund 2017.
DKK 35,000–40,000 / € 4,700–5,350

1120
OMEGA
Model: Seamaster
Reference: 21230412003001
Movement: Automatic, cal. 2500
Material: Steel
Diameter: 41 mm
Bracelet: Omega bracelet of steel
Circumference: App. 20.5 cm
Year: 2010s

Accompanied by Omega box, hang-tag, pictogram card and undated certificate from authorised retailer Sensation du Temps.
DKK 20,000–25,000 / € 2,700–3,350



1120



1119

1119
BREITLING
Model: Aviator 8 Automatic 41
Reference: M173152A1L1X1
Movement: Automatic, ETA 2824
Material: DLC-coated steel
Diameter: 41 mm
Strap: Breitling canvas strap
Buckle: Breitling buckle of DLC-coated steel
Year: 2019

Accompanied by Breitling box, travel box, manuals, chronometer certificate, purchase receipt and certificate from Breitling New York 2019.
DKK 20,000 / € 2,700



1121

1121
OMEGA
Model: Seamaster Aqua Terra
Reference: 22012412106001
Movement: Automatic, cal. 8900
Material: Steel
Diameter: 41 mm
Strap: Omega rubber strap
Folding clasp: Omega folding clasp of steel
Year: 2020

Accompanied by Omega box, manuals, hang-tag, pictogram card, chronometer certificate and certificate from authorised retailer Suarez 2020.
DKK 25,000–30,000 / € 3,350–4,000





1122

1122
ROLEX
 Model: GMT-Master "glossy gilt"
 Reference: 1675
 Movement: Automatic, cal. 1575
 Material: Steel
 Diameter: 40 mm
 Bracelet: "Oyster" bracelet of steel
 Circumference: 18.5 cm
 Year: 1966

Case no. 1675
 Caseback no. 1675 II.66
 Serial no. 1490023
 Movement no. D42192
 Bracelet no. 78360
 Endlink no. 580
 Folding clasp no. 78360

Accompanied by original Rolex box, three Rolex catalogues from the 1970-80s, hang-tag, additional bezel inlay (blue back), two additional "Oyster" bracelets (ref. 78790 and 93150), two sets of end links (ref. 501B and 593), six receipts from authorised retailer Klarlund concerning purchase of bracelets, bezel and servicing, as well as the original guarantee certificate from authorised retailer Wempe Hamburg 1967.

The watch comes directly from the original owner. He tells the following stories about his faithful companion:

"A young 23-year-old sailor goes to the free harbor in Hamburg on 19 September 1967 to buy a Rolex GMT-Master at the retailer Gerhard Wempe – the inspiration for this specific watch came from an ad in Playboy Magazine.

The GMT function soon proved useful for the years to come as he was employed as a sailor in the East Asiatic Company Ltd. (ØK). Africa, India, Thailand, Singapore, Hong Kong, Korea, USA, the West Indies and Australia are just some of the places that the watch has visited.

During a safari trip in Mozambique, an ostrich became interested in the GMT-Master and tried to snatch the watch from him, however the young sailor won the "battle" and could continue his excursion with the watch safely strapped to his wrist.

The watch has crossed the equator as well as the date line numerous times. The Suez and Panama channels were also often frequented by the sailor.



In 1970, Japan was the first Asian country to host the World Exhibition, which was held in Osaka. Together with the watch, the sailor visited the exhibition twice within half a year.

After many years at sea, the sailor went back to Denmark to work as a blacksmith in a large Danish company. Here, he was working in the North Sea on oil rigs, often welding way below the water surface. Here, as always, the GMT-Master was attached to his wrist and was 100% reliable.

The watch has also been with him during his free time and has served as a faithful companion when yachting and rowing. However, for the last few years, the watch has been put on retirement. Hence, after 56 years together with the old sailor, it is now time for the watch to take on the journey with someone else..."
 DKK 120,000–150,000 / € 16,000–20,000





1123

1123
ROLEX
Model: GMT-Master
Reference: 1675
Movement: Automatic, cal. 1570
Material: Steel
Diameter: 40 mm
Bracelet: "Oyster" bracelet of steel
Circumference: 17.5 cm
Year: 1979

Case no. 1675
Caseback no. 1675
Serial no. 5'717'986
Movement no. D'789'725
Bracelet no. 78360
Endlink no. 580
Folding clasp no. B

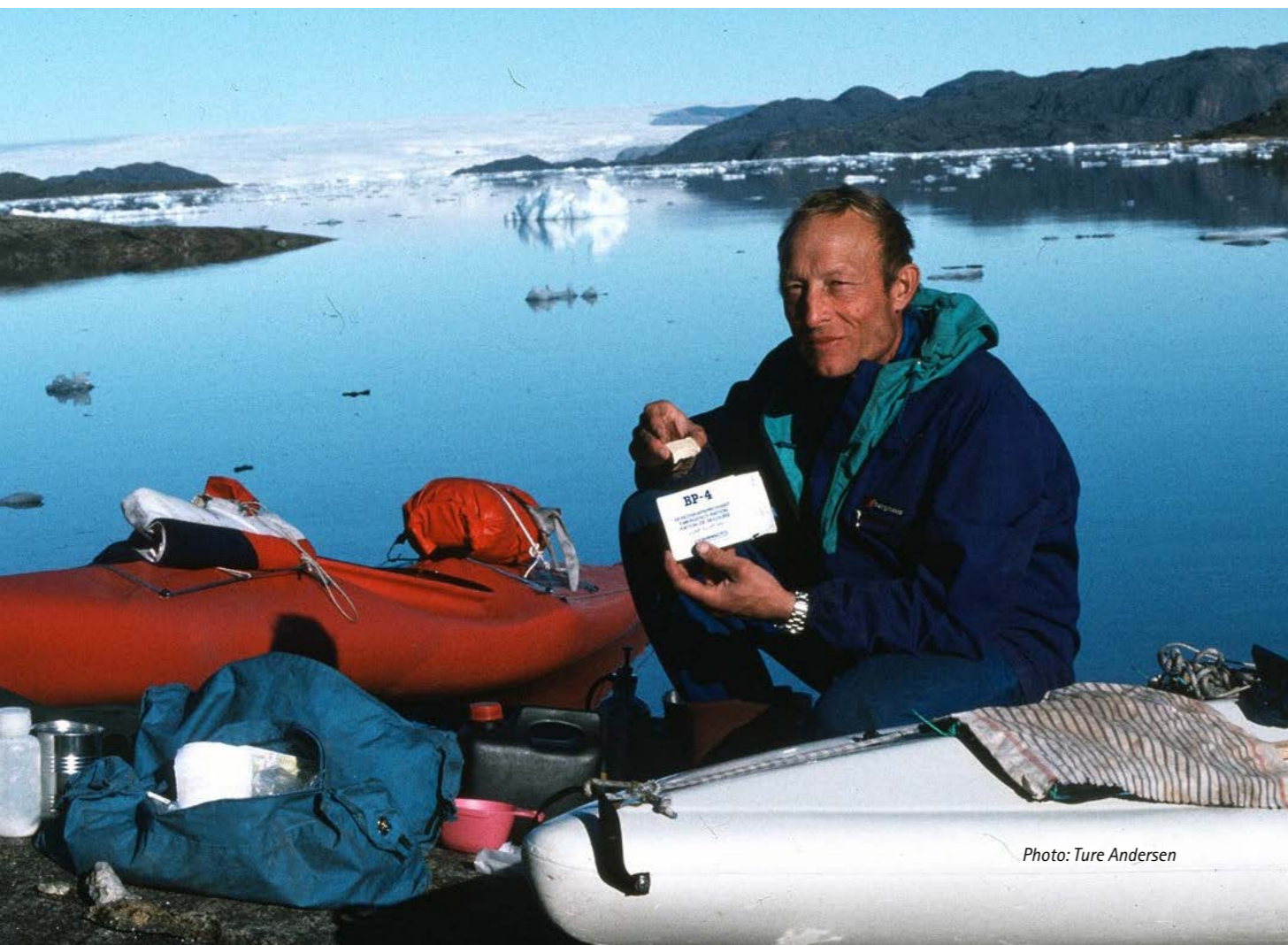


Photo: Ture Andersen



Photos: Ture Andersen

How does one define a true explorer? A true explorer is one that goes where no one has been before him. Someone who does things that seem impossible. Someone who is infected with fernweh. John Andersen, an 80-year-old architect, writer and above all adventurer, is one such person. For more than 50 years, John has been doing motorcycle exploration, mountaineering and archaeological expeditions all over the world, especially in Greenland and Asia. He has been the chairman of the Adventurer's Club and has received prominent awards for his adventurous achievements, including the Folkersen Award in 2016.

One of John's most famous feats as an explorer was completed over a time-period of 34 years. From 1976 to 2010 John kayaked, as the first and only person in the world, the complete distance around Greenland. During these trips, as well as on the many other great adventures that he has done since the late 1970s, he wore the watch that we have the great privilege to offer on auction.

No watch brand is as associated with ruggedness, exploration and sheer adventuring as Rolex. Flipping through National Geographic magazines from the second half of the 20th century, Rolex advertisements have underpinned their importance as a watch manufacturer for the most demanding sportsmen and adventurers around the world – that of course includes John Andersen. As he knew that he would be travelling to all corners of the world, the GMT-Master was the natural choice. With this watch, he was able to have the local time as well as to track the time at home where his family was. Interesting to think about is, that this watch may be the only thing that has unfailingly been with him on these innumerable journeys, whether it was in minus 40 degrees in Greenland or plus 40 degrees in Arabia.

John's largest contribution to those interested in explorative voyages is his long list of books. These describe some of the most challenging and indeed interesting journeys that he has undertaken, including various Greenland expeditions, motorcycle trips and Arabic adventures. Today, John spends quite some time lecturing about his many trips around the world, showcasing a lifelong interest in adventuring and in sharing these experiences with likeminded.

This is a rare opportunity to acquire a watch that has literally been all around the world, strapped to the wrist of a living legend.

DKK 100,000–200,000 / € 13,500–27,000



1124

1124
E B E R H A R D
Model: "Pre Extra Fort"
Movement: Manual, cal. 16"
Material: 18k gold
Diameter: 39 mm
Strap: Leather strap
Buckle: Buckle of gold-plated steel
Year: 1940s

Accompanied by original manual and bakelite box.
DKK 20,000–30,000 / € 2,700–4,000



1125
R O L E X
Model: Submariner "Small Crown"
Reference: 6536/1
Movement: Automatic, cal. 1030
Material: Steel
Diameter: 37 mm
Bracelet: "Oyster" bracelet of steel (ref. 7206/65)
Circumference: App. 19 cm
Year: 1956-57

Case no. 6536/1
Caseback no. 11.56 6536/1
Serial no. 155884
Endlink no. 65
Folding clasp no. 1 57

Accompanied by service receipt from Klarlund approx. 1998 and original certificate from authorised retailer A.B. Svenska Urdepoten 1969.

The picture above shows the original owner wearing the watch in front of his car. September 1977.

DKK 200,000–300,000 / € 27,000–40,000



1125





1126

1126
FAVRE - LEUBA
Model: Sea Sky
Reference: 33033
Movement: Manual chronograph, Valjoux 72
Material: Steel
Diameter: 40 mm
Bracelet: Later steel "beads of rice" bracelet
Circumference: App. 17 cm
Year: 1960s

Turning bezel with Bakelite insert.
DKK 40,000–60,000 / € 5,350–8,050



1128
OMEGA
Model: Seamaster
Reference: 165.024
Movement: Automatic, cal. 552
Material: Steel
Diameter: 41.5 mm
Bracelet/strap: Omega bracelet of steel
Circumference: App. 17.5 cm
Year: 1961

Accompanied by later Omega caseback and purchase receipt from Kaplans Auctions, 2008.
DKK 40,000 / € 5,350



1128



1127
BREITLING
Model: Navitimer GMT
Reference: AB044121
Movement: Automatic chronograph, cal. 04
Material: Steel
Diameter: 48 mm
Bracelet: Breitling bracelet of steel
Circumference: App. 16.5 cm
Year: 2018

Accompanied by Breitling box, travel pouch, four additional links (approx. 5.4 cm), manuals, chronometer certificate, hangtag, bezel protector and certificate from authorised retailer Martenssons Ur 2018.
DKK 50,000 / € 6,700



1127

1129
BREITLING
Model: Superocean Heritage II 46
Reference: AB2020
Movement: Automatic, cal. B20
Material: Steel
Diameter: 46 mm
Bracelet: Breitling bracelet of steel
Circumference: App. 17.5 cm
Year: 2017

Accompanied by Breitling box, travel box, manual, three additional links (approx. 18 mm) and certificate from authorised retailer Hvelplund 2017.
DKK 20,000–25,000 / € 2,700–3,350



1129



1130

1130
O M E G A
Model: Speedmaster "Moonwatch"
Reference: 3876.50.31
Movement: Manual, cal. 1866
Material: Steel
Diameter: 42 mm
Bracelet: Omega bracelet of steel
Circumference: 16 cm
Year: 2007

Accompanied by Omega box, manual, used black Omega alligator strap with Omega folding clasp of steel, setting pin, five additional links (approx. 4.2 cm), pictogram card and certificate from authorised retailer Klarlund 2007.

This lot is subject to CITES export/import restrictions and can only be shipped to addresses within the EU or collected from one of our departments. Please contact the department for further details.
DKK 25,000–30,000 / € 3,350–4,000



1131

1131
O M E G A
Model: Speedmaster Racing
Reference: 178.2061
Movement: Automatic chronograph, cal. 3330
Material: Steel
Diameter: 40 mm
Bracelet: Omega bracelet of steel
Circumference: App. 18.5 cm
Year: 2010s

Accompanied by Omega box and manual.
DKK 20,000–30,000 / € 2,700–4,000

1132
O M E G A
Model: Speedmaster "Apollo 15"
Reference: 33665100
Movement: Manual chronograph, cal. 1861
Material: 18k gold and steel
Diameter: 42 mm
Bracelet: Omega bracelet of steel
Circumference: App. 17.5 cm
Year: 2007

Accompanied by Omega box, manual, three additional links, pictogram card, various movement parts and copy of original purchase receipt from authorised retailer Klaus Rygaard 2007.
DKK 40,000–50,000 / € 5,350–6,700



1132



1133
BREITLING
Model: Chronomat 41
Reference: HB0140
Movement: Automatic chronograph, cal. B01
Material: 18k gold
Diameter: 41 mm
Strap: Black Breitling crocodile strap
Clasp: Breitling folding clasp of 18k gold
Year: 2010s

Accompanied by Breitling box, manuals, pressure test from 2014 and certificate.

This lot is subject to CITES export/import restrictions and can only be shipped to addresses within the EU or collected from one of our departments. Please contact the department for further details.
DKK 80,000–100,000 / € 10,500–13,500



1133



1134

1134
PATEK PHILIPPE
Reference: 3394-1
Movement: Manual
Material: 18k white gold
Diameter: 32 x 18 mm
Bracelet: Integrated bracelet of 18k white gold
Circumference: App. 16 cm
Year: 1970s

The dial is set with numerous brilliant-cut diamonds. Caseback engraved JQ. DKK 20,000 / € 2,700



1135

1135
CHOPARD
Movement: Manual
Material: 18k white gold
Diameter: 20 x 26 mm
Bracelet: Integrated bracelet of 18k white gold
Circumference: App. 16 cm
Year: 1960s

Accompanied by original Chopard box. DKK 10,000 / € 1,350

1136
PIAGET
Reference: 7315
Movement: Quartz
Material: 18k white gold
Diameter: 27.5 x 24 mm
Bracelet: Integrated bracelet of 18k white gold
Circumference: App. 15.5 cm
Year: 1980s

The watch is set with numerous single-cut diamonds. Accompanied by later box.

DKK 25,000–30,000 / € 3,350–4,000



1136

1137
VAN CLEEF & ARPELS
Model: Classic Tonneau
Reference: 322968B2
Movement: Quartz
Material: 18k white gold
Diameter: 18 x 20 mm
Strap: Van Cleef & Arpels lizard strap
Buckle: Van Cleef & Arpels buckle of 18k white gold
Year: 1990s

Accompanied by later black box.

This lot is subject to CITES export/import restrictions and can only be shipped to addresses within the EU or collected from one of our departments. Please contact the department for further details.

DKK 20,000–30,000 / € 2,700–4,000



1137



1138

1138
A. LANGE & SÖHNE
Model: Langematik "Sax-O-Mat"
Reference: 301.025
Movement: Automatic, cal. L 921.2
Material: Platinum
Diameter: 37 mm
Strap: A. Lange & Söhne alligator strap
Buckle: A. Lange & Söhne buckle of platinum
Year: 2007

Accompanied by an A. Lange & Söhne box, manual, polishing cloth, unused black alligator strap, as well as certificate from authorised retailer Ole Mathiesen 2007.

This lot is subject to CITES export/import restrictions and can only be shipped to addresses within the EU or collected from one of our departments. Please contact the department for further details. DKK 100,000-130,000 / € 13,500-17,500



1139
URBAN JÜRGENSEN
Reference: 8
Movement: Automatic, cal. FP1160
Material: Steel
Diameter: 37 mm
Strap: Leather strap
Folding clasp: Urban Jürgensen folding clasp of steel
Year: 2006

Accompanied by certificate from Urban Jürgensen 2006.

The watch is no. 01/50.

DKK 125,000-150,000 / € 17,000-20,000



1139



1140

1140
PATEK PHILIPPE
 Model: Calatrava
 Reference: 5127
 Movement: Automatic, cal. 315
 Material: 18k gold
 Diameter: 37 mm
 Strap: Patek Philippe alligator strap
 Folding clasp: Patek Philippe folding clasp of 18k gold
 Year: 2006

Accompanied by an Extract from the Archives and service receipt from Patek Philippe via Hvelplund 2017.

This lot is subject to CITES export/import restrictions and can only be shipped to addresses within the EU or collected from one of our departments. Please contact the department for further details. DKK 100,000–130,000 / € 13,500–17,500



1142
URBAN JÜRGENSEN
 Reference: 8
 Movement: Automatic, cal. FP1160
 Material: Platinum
 Diameter: 37 mm
 Strap: Urban Jürgensen alligator strap
 Folding clasp: Urban Jürgensen folding clasp of steel
 Year: 2000s

This lot is subject to CITES export/import restrictions and can only be shipped to addresses within the EU or collected from one of our departments. Please contact the department for further details. DKK 125,000–150,000 / € 17,000–20,000



1142



1141

1141
IWC
 Model: Portugieser
 Reference: 5001
 Movement: Automatic, cal. C.51011
 Material: 18k gold
 Diameter: 42 mm
 Strap: IWC alligator strap
 Folding clasp: IWC Folding clasp of 18k gold
 Year: 2000s

Accompanied by box, manual and hangtag.

This lot is subject to CITES export/import restrictions and can only be shipped to addresses within the EU or collected from one of our departments. Please contact the department for further details. DKK 60,000–80,000 / € 8,050–10,500

1143
IWC
 Model: Portugiser
 Reference: 3714
 Movement: Automatic chronograph, cal. 79350
 Material: Steel
 Diameter: 41 mm
 Strap: IWC alligator strap
 Buckle: IWC buckle of steel
 Year: 2007

Accompanied by box and certificate.

Wear due to age and use. This lot is subject to CITES export/import restrictions and can only be shipped to addresses within the EU or collected from one of our departments. Please contact the department for further details. The watch works, but we do not guarantee for the functionality.

DKK 25,000–30,000 / € 3,350–4,000



1143



1144

1144
PIAGET
Reference: 7708
Movement: Manual
Material: 18k white gold
Diameter: 31 x 31 mm
Strap: Piaget strap
Buckle: Piaget buckle of 18k white gold
Year: 1988

Accompanied by later box, Piaget manual and certificate from 1988.
DKK 10,000–20,000 / € 1,350–2,700

1146
IWC
Model: Da Vinci 1969
Reference: 5461
Movement: Automatic, cal. 80111 T
Material: 18k gold
Diameter: 41 x 39 mm
Strap: IWC alligator strap
Buckle: IWC buckle of 18k gold
Year: 2000s

Accompanied by box, hangtags and manual.

This lot is subject to CITES export/import restrictions and can only be shipped to addresses within the EU or collected from one of our departments. Please contact the department for further details.
DKK 40,000–50,000 / € 5,350–6,700



1146



1145

1145
PATEK PHILIPPE
Reference: 4197
Movement: Manual, cal. 16-250
Material: 18k gold
Diameter: 24.5 x 21.5 mm
Bracelet: Patek Philippe bracelet of 18k gold
Circumference: App. 15.5 cm
Year: 1970s

Accompanied by later box and an additional dial. The picture below shows the watch with the other dial.
DKK 40,000–50,000 / € 5,350–6,700



1147
CARTIER
Model: La Dona
Reference: 2903
Movement: Quartz, cal. 059
Material: 18k gold
Diameter: 22 x 22 mm
Strap: Cartier alligator strap
Folding clasp: Cartier folding clasp of 18k gold
Year: 2007

Accompanied by manual, instruction DVD and certificate from authorised retailer Hingelberg 2007.

This lot is subject to CITES export/import restrictions and can only be shipped to addresses within the EU or collected from one of our departments. Please contact the department for further details.
DKK 50,000 / € 6,700



1147



1148

1148
ROLEX
Model: Daytona "John Mayer"
Reference: 116508
Movement: Automatic chronograph, cal. 4130
Material: 18k gold
Diameter: 40 mm
Bracelet: "Oyster" bracelet of 18k gold
Circumference: App. 18.5 cm
Year: 2023

Case no. 116508
Serial no. 451uw148

Accompanied by Rolex box, manual, hangtags, warranty and purchase receipts from authorised retailer Klarlund, as well as certificate from Klarlund, September 2023.

The watch is unused.

The Rolex Cosmograph Daytona stands as one of the most coveted models in the realm of Rolex collectors. With its unique associations to both the space-race and the racetrack, this model possesses an unparalleled pedigree deeply rooted in the fundamental principles of an authentic tool watch.

What sets these two ref. 116508 apart, capturing the attention of discerning collectors, is not their prowess as tool watches, but the extraordinary departure from the materials to which they are typically associated. The use of 18k gold, instead of the customary robust steel, coupled with the radiant green dial, elevates these watches from their utilitarian aesthetic and formalizes the well-known silhouette of the Daytona, transforming them into something entirely different. The reference 116508 is not only highly functional but also undeniably sophisticated, making them a superb addition to any collection.

DKK 400,000–500,000 / € 53,500–67,000



1149

1149
ROLEX
Model: Daytona "John Mayer"
Reference: 116508
Movement: Automatic chronograph, cal. 4130
Material: 18k gold
Diameter: 40 mm
Bracelet: "Oyster" bracelet of 18k gold
Circumference: App. 19 cm
Year: 2023

Case no. 116508
Serial no. 320802P8

*Accompanied by Rolex box, manual and certificate from 2023.
DKK 400,000–500,000 / € 53,500–67,000*





1150

1150
ROLEX
Model: Submariner "Red Sub"
Reference: 1680
Movement: Automatic, cal. 1570
Material: Steel
Diameter: 40 mm
Bracelet: "Oyster" bracelet of steel
Circumference: App. 17.5 cm
Year: 1973

Case no. 1680
Caseback no. 1680 III.71
Serial no. 3225312
Movement no. D163253
Bracelet no. 9315
Endlink no. 380

Accompanied by newer "Oyster" bracelet of steel (ref. 93150) and endlinks (ref. 580), as well as two service pouches from authorised retailer Klarlund.

The dial of this watch is a so-called Mark 8 dial, which is a rarely seen service dial featuring red writing and LumiNova instead of tritium. Hence the "Swiss only" marking at 6 o'clock.

DKK 100,000–130,000 / € 13,500–17,500



1151

1151
ROLEX
Model: GMT-Master
Reference: 16700
Movement: Automatic, cal. 3175
Material: Steel
Diameter: 40 mm
Strap/Bracelet: Rolex "Oyster" bracelet of steel
Buckle/Clasp: Rolex folding clasp of steel
Circumference: app. 20 cm
Year: 1995

Case no. 16700
Case back no. 16700
Movement no. 6917654
Serial no. W945969
End link no. 501 B
Bracelet no. 78360
Folding clasp no. 78360

Accompanied by black GMT bezel insert, green Rolex service pouch and service papers from authorized retailer Knud Pedersen 2018.

DKK 60,000–80,000 / € 8,050–10,500



1152

1152
AUDEMARS PIGUET
Model: Royal Oak Chronograph "Leo Messi"
Reference: 26325TS.OO.D005CR.01
Movement: Automatic chronograph, cal. 2385
Material: Steel
Diameter: 41 mm
Strap: Brown Audemars Piguet crocodile strap
Clasp: Audemars Piguet folding clasp of steel
Year: 2014

Limited edition no. 191/500

Accompanied by Audemars Piguet box, manual and certificate from authorized retailer Boutique Dos Relógios 2014.

This lot is subject to CITES export/import restrictions and can only be shipped to addresses within the EU or collected from one of our departments. Please contact the department for further details.
DKK 250,000–300,000 / € 33,500–40,000





1153

1153
ROLEX
Model: Datejust
Reference: 69278
Movement: Automatic, cal. 2135
Material: 18k gold
Diameter: 26 mm
Bracelet: "President" bracelet of 18k gold
Circumference: App. 15.5 cm
Year: 1985

Case no. 69278
Caseback no. 69000A
Serial no. 8710052
Movement no. 281315
Endlink no. 68B
Folding clasp no. 9235F

Accompanied by Rolex box and two additional links.
DKK 40,000–50,000 / € 5,350–6,700



1154

1154
ROLEX
Model: Datejust
Reference: 69178
Movement: Automatic, cal. 2135
Material: 18k gold
Diameter: 26 mm
Bracelet: "President" bracelet of 18k gold
Circumference: App. 17.5 cm
Year: 1990

Case no. 69178
Caseback no. 69000
Serial no. L712148
Movement no. 1375248
Folding clasp no. 8570F
End link no. 68B

Accompanied by box and certificate from authorised retailer
Klarlund 1990. *DKK 25,000 / € 3,350*



1155

1155
ROLEX
Model: Sky-Dweller
Reference: 326138
Movement: Automatic, cal. 9001
Material: 18k gold
Diameter: 42 mm
Strap: Rolex alligator strap
Folding clasp: Rolex folding clasp of 18k gold
Year: 2022

Case no. 326138
Caseback no. 2428
Serial no. 54D9F607
Movement no. D87J8179

Accompanied by Rolex box, manuals, hangtag, original purchase
receipt and certificate from authorised retailer M. C. Mortensen
2022.

This lot is subject to CITES export/import restrictions and can
only be shipped to addresses within the EU or collected from one
of our departments. Please contact the department for further
details. *DKK 200,000–250,000 / € 27,000–33,500*



1156

1156
ROLEX
Model: Yacht-Master II
Reference: 116681
Movement: Automatic, cal. 4160
Material: 18k gold and steel
Diameter: 43 mm
Bracelet: "Oyster" bracelet of 18k gold and steel
Circumference: app. 17.5 cm
Year: 2012

Case no. 116681
Case back no. 2100
Movement no. C0427645
Serial no. 2096H778

Accompanied by Rolex box, hangtag and certificate from authorized retailer Fassorra 2012.

DKK 110,000–130,000 / € 15,000–17,500



1157
ROLEX
Model: Daytona
Reference: 116500LN
Movement: Automatic chronograph, cal. 4130
Material: Steel
Diameter: 40 mm
Bracelet: "Oyster" bracelet of steel
Circumference: App. 18 cm
Year: 2017

Case no. 116500
Caseback no. 2100
Serial no. Q14494W0
Movement no. F21K8748

Accompanied by Rolex box, manuals, hangtags, bezel protector, an additional link and certificate from authorised retailer Engstrom Ur 2017. DKK 170,000–200,000 / € 23,000–27,000



1157



1158

1158

OMEGA

Model: Ladymatic
Reference: 425.65.34.20.55.001
Movement: Automatic, cal. 8521
Material: 18k gold
Diameter: 34 mm
Bracelet: Omega bracelet of 18k gold
Circumference: App. 15.5 cm
Year: 2014

Accompanied by Omega box, pictogram card, diamond certificate and certificate from authorized retailer Klitgaard 2014.

DKK 80,000–100,000 / € 10,500–13,500



1159

1159

OMEGA

Model: De Ville Chronograph
Reference: 48777036
Movement: Automatic chronograph, cal. 3313
Material: Steel
Diameter: 35 mm
Strap: Omega alligator strap
Folding clasp: Omega folding clasp of steel
Year: 2007

Accompanied by Omega box, manual, diamond certificate, pictogram card, chronometer certificate and certificate from authorised retailer Bernhard Huke 2007.

This lot is subject to CITES export/import restrictions and can only be shipped to addresses within the EU or collected from one of our departments. Please contact the department for further details.
DKK 30,000–40,000 / € 4,000–5,350



1160

PATEK PHILIPPE

Model: Nautilus
Reference: 4700/3
Movement: Quartz, cal. E.19C
Material: 18k gold
Diameter: 27 mm
Bracelet: Integrated 18k gold Patek Philippe bracelet
Circumference: app. 15.5 cm
Year: 1980s

Case back no. 4700/3

Serial no. 558310

Accompanied by Patek Philippe box and hangtag.

DKK 100,000–130,000 / € 13,500–17,500



1160

1161

CARTIER

Model: Pasha
Reference: 2412
Movement: Automatic chronograph, cal. 047
Material: Steel
Diameter: 36.5 mm
Bracelet: Cartier bracelet of steel
Circumference: App. 16 cm
Year: 2000s

Accompanied by Cartier box and manual.

DKK 18,000–20,000 / € 2,400–2,700



1161





1162

1162
ROLEX
 Model: Daytona
 Reference: 116520
 Movement: Automatic chronograph, cal. 4130
 Material: Steel
 Diameter: 40 mm
 Bracelet: "Oyster" bracelet of steel
 Circumference: App. 18 cm
 Year: 2017

Case no. 116520
 Serial no. U96930F5

Accompanied by box, hangtags, one extra link and certificate from authorised retailer Klarlund 2017.

DKK 100,000–120,000 / € 13,500–16,000



1163

1163
ROLEX
 Model: Submariner
 Reference: 16613LB
 Movement: Automatic, cal. 3135
 Material: 18k gold and steel
 Diameter: 40 mm
 Bracelet: "Oyster" bracelet of 18k gold and steel
 Circumference: App. 17.5 cm
 Year: 1989

Case no. 16613
 Caseback no. 16610
 Serial no. L439393
 Movement no. 5290315
 Bracelet no. 93153
 Endlink no. 401B
 Folding clasp no. 93153.18

Accompanied by Rolex box and service receipt from 2023.

DKK 60,000–80,000 / € 8,050–10,500

1164
ROLEX
 Model: Daytona
 Reference: 16528
 Movement: Automatic chronograph, cal. 4030
 Material: 18k gold
 Diameter: 40 mm
 Bracelet: "Oyster" bracelet of 18k gold
 Circumference: app. 19.5 cm
 Year: 1996

Case no. 16528
 Case back no. 16500
 Movement no. 135'333
 Serial no. W'280'316
 End link no. 103

Accompanied by Rolex box and certificate from authorized retailer Klarlund 1996.

DKK 225,000–275,000 / € 30,000–37,000



1164





1165

1165
PATEK PHILIPPE
Model: Calatrava
Reference: 3591
Movement: Automatic, cal. 28-255
Material: 18k gold
Diameter: 34 mm
Bracelet: Integrated bracelet of 18k gold
Circumference: app. 17 cm
Year: 1960s

*Case back no. 3591
Serial no. 522138*

*Accompanied by Patek Philippe service pouch.
DKK 25,000–30,000 / € 3,350–4,000*



1166

1166
OMEGA
Model: Constellation
Reference: 168.009
Movement: Automatic, cal. 564
Material: 18k gold
Diameter: 35 mm
Bracelet: Omega bracelet of 18k gold
Circumference: app. 20.5 cm
Year: 1969

Case back no. 168009/168017

*Accompanied by later Omega box.
DKK 25,000–30,000 / € 3,350–4,000*



1167

1167
AUDEMARS PIGUET
Model: Royal Oak Offshore "The Beast"
Reference: 25721ST
Movement: Automatic chronograph, cal. 2226
Material: Steel
Diameter: 42 mm
Bracelet: Audemars Piguet bracelet of steel
Circumference: App. 18 cm
Year: 1990s
DKK 125,000–150,000 / € 17,000–20,000





1168

1168
PATEK PHILIPPE
Model: Calatrava
Reference: 5196J-001
Movement: Manual, cal. 215
Material: 18k gold
Diameter: 37 mm
Strap: Brown Patek Philippe crocodile strap
Clasp: Patek Philippe folding clasp of 18k gold
Year: 2010s

*Case back no. 5196
Serial no. 4271351*

Accompanied by Patek Philippe box, an additional Patek Philippe C-type buckle of 18k gold and receipt of purchase from Nobeluhren 2016.

This lot is subject to CITES export/import restrictions and can only be shipped to addresses within the EU or collected from one of our departments. Please contact the department for further details. DKK 100,000–130,000 / € 13,500–17,500



1169

1169
BREGUET
Model: Classique
Reference: 5140
Movement: Automatic, cal. 502.3 SD
Material: 18k gold
Diameter: 40 mm
Strap: Breguet alligator strap
Folding clasp: Breguet folding clasp of 18k gold
Year: 2005

Accompanied by Breguet box, manual, Eilux watch winder and certificate from authorised retailer Ole Mathiesen 2005.

This lot is subject to CITES export/import restrictions and can only be shipped to addresses within the EU or collected from one of our departments. Please contact the department for further details. DKK 50,000 / € 6,700





1170

1170
ULYSSE NARDIN
Model: Executive Dual Time
Reference: 243-00
Movement: Automatic, cal. UN024
Material: Steel and ceramic
Diameter: 43 mm
Strap: Ulysse Nardin alligator strap
Folding clasp: Ulysse Nardin folding clasp of steel
Year: 2010s.

Accompanied by certificate of authenticity/service certificate from Urmager Dr. Tværgade 2023.

This lot is subject to CITES export/import restrictions and can only be shipped to addresses within the EU or collected from one of our departments. Please contact the department for further details.
DKK 20,000–30,000 / € 2,700–4,000



1171

1171
ROGER DUBUIS
Model: Much More
Reference: M34570
Movement: Automatic, cal. 57
Material: 18k white gold
Diameter: 34 x 47 mm
Strap: Roger Dubuis alligator strap
Buckle: Roger Dubuis buckle of 18k white gold
Year: 2000s

Accompanied by Roger Dubuis box, travel box and hangtag.

This lot is subject to CITES export/import restrictions and can only be shipped to addresses within the EU or collected from one of our departments. Please contact the department for further details.
DKK 40,000 / € 5,350

1172
ETERNA
Model: Kontiki Royal Quartz
Reference: 729 1505 68
Movement: Quartz, ETA 940 111
Material: 18k gold
Diameter: 35.5 mm
Bracelet: Eterna bracelet of 18k gold
Circumference: App. 17.5 cm
Year: 1980s

The watch weighs approx. 159 g.

The Eterna KonTiki was introduced to commemorate ethnologist Thor Heyerdahl's famed 1947 expedition to Polynesia. Heyerdahl wanted to prove that the native Pre-Columbians were able to reach Polynesia with the aid of prevailing winds and currents. To prove this, Heyerdahl, along with five other scientists, set sail on a rudimentary raft with little but provisions and waterproof Eterna watches strapped to their wrists. After 101 days at sea, the KonTiki raft made it to the shores of Polynesia.

This Eterna KonTiki Royal Quartz is fashioned in 18k gold with a beautifully integrated bracelet and is a great example of early 1980s watch design. Echoing the period's watches, this example is a beautiful addition to any collection of fine watches.

DKK 30,000–40,000 / € 4,000–5,350



1172



1173

1173
PATEK PHILIPPE
Reference: 3370
Movement: Manual, cal. 13.5-250PM
Material: 18k white gold
Diameter: 19.5 mm
Bracelet: Integrated bracelet of 18k white gold
Circumference: App. 16 cm
Year: 1970s

Accompanied by Patek Philippe box.

DKK 20,000–25,000 / € 2,700–3,350



1174

Clock watch. Virgule escapement. Stamped CF27697. Likely of French origin. Later white enamel dial with golden hands. Winding via fusee and chain. Bell mounted on the inside of the caseback. The watch is wound via two winding holes which are opened via two levers on the right and left sides of the case. Gilt balance bridge. Cartouche on the caseback depicting a dog. The case measures 12.9 cm and the watch weighs approx. 1038 g. 1770-80s.

DKK 20,000 / € 2,700



1174



1175

RECORDON, SPENCER & PERKINS

A 20k gold pedometer wound pocket watch, white dial with Roman hour and Arabic minute numerals, blued hands, signed Recordon, Spencer & Perkins London, gilt movement, pierced and engraved cock with rose-cut diamond end-stone, oscillating weight signed Recordon, Spencer & Perkins, London, No 151. Back case marked with maker's mark IGF, marks for Neuchatel, K20 and indistinct number. The case opens by pulling the pendant upwards. London c. 1780-1785. Weight in total 139 g. Case diam. 55 mm.



1175

Louis Recordon (active 1778-1824), a swiss born clockmaker took out patent No. 1249 for a pedometer-winding movement in 1780, shortly after arriving in London. Before moving to London Recordon had worked for A.L. Perrelet in Le Locle and he knew and possibly worked with Abraham Louis Breguet in Paris at the end of 1778. Breguet developed his self-winding system in about 1780, around the same time as, but not before, Recordon and his patent. Recordon was Breguets agent in London from 1780. Spencer & Perkins made the self-winding watches for Recordon in the beginning until Breguet took over. (source: Richard Watkins: The Origins Of Self-Winding Watches 1773-1779, second edition)

Provenance: The Danish merchant, author and editor Mendel Levin Nathanson (1780-1868), and thence by descent.

DKK 40,000-60,000 / € 5,350-8,050

1176
PATEK PHILIPPE

Pocket watch of 14k gold. Mechanical movement with manual winding, movement no. 189904. Golden dial with large black Arabic numerals and blued steel hands. Sub-seconds at 6 'clock. Gilt movement with wolfs teeth winding, moustache lever escapement and blued Breguet hairspring. Watch diameter 46.5 mm. Caseback no. 285303. 1910s.

DKK 20,000–30,000 / € 2,700–4,000



1176



1177

1177
CARL RANCH

Pocket watch of silver. Duplex escapement with split bi-metallic chronometer balance of steel and brass. No. 203. White enamel dial with gold hands and sub-seconds at 6 o'clock. Full plate movement with beautifully engraved balance cock. Blued steel hairspring. Jeweled gear train in chatons. Diamond end stone. Watch diameter 54.5 mm. The caseback of the watch is engine-turned. Winding via the back, although the movement is hinged and accessed via the front. Movement signed "C. Ranch Kiöbenhavn 203". Dial signed "C. Ranch Kiöbenhavn". The case is hallmarked and dated to 1844. Moreover, it bears a London hallmark. The case is most probably made the the casemaker John West, London. The ebauche is also of English origin. 1840s.

This deck watch is accompanied by a lockable mahogany case with an observation lid. The case is numbered 203 and is fitted with a brass plaque which is inscribed with "Til Hr. Capt. Th. Södering fra Foreningen for Söfartens Fremme 1846". (Translates to: For Mr. Capt. Th. Södering from the Association of the Promotion of Maritime Activities 1846).

Carl Ranch was a Danish chronometer maker who became a master watchmaker in 1845. This deck watch is thus one of the earlier ones. Ranch was later known as Retailer of signed pieces manufactured by others but often bearing his name. The watch comes from a direct descendant of captain Södering.

DKK 15,000–20,000 / € 2,000–2,700





3257



3050



3101



3169



3134

3257

5 bts. Château Cheval Blanc, 1. Grand Cru Classé A 1985 A-A/B (bn).

DKK 16,000–22,000 / € 2,150–2,950

3050

1 bt. Mg. Château Latour, Pauillac. 1. Cru Classé 1961 A-A/B (bn).

DKK 60,000–80,000 / € 8,500–10,500

3101

1 bt. Dmg. Château Mouton Rothschild, Pauillac. 1. Cru Classé 2000 A (hf/in). Owc.

DKK 70,000–90,000 / € 9,400–12,000

3169

6 bts. Château Montrose, Saint - Estephe. 2. Cru Classé 1989 A-A/B (bn). Owc. A/B (ts).

DKK 12,000–16,000 / € 1,600–2,150

3134

1 bt. Bal. Château Léoville Poyferré, Saint - Julien. 2. Cru Classé 2015 A (hf/in). Owc. 12 L.

DKK 14,000–18,000 / € 1,900–2,400

Champagne

Online Auction

Thursday 14 December 8 pm

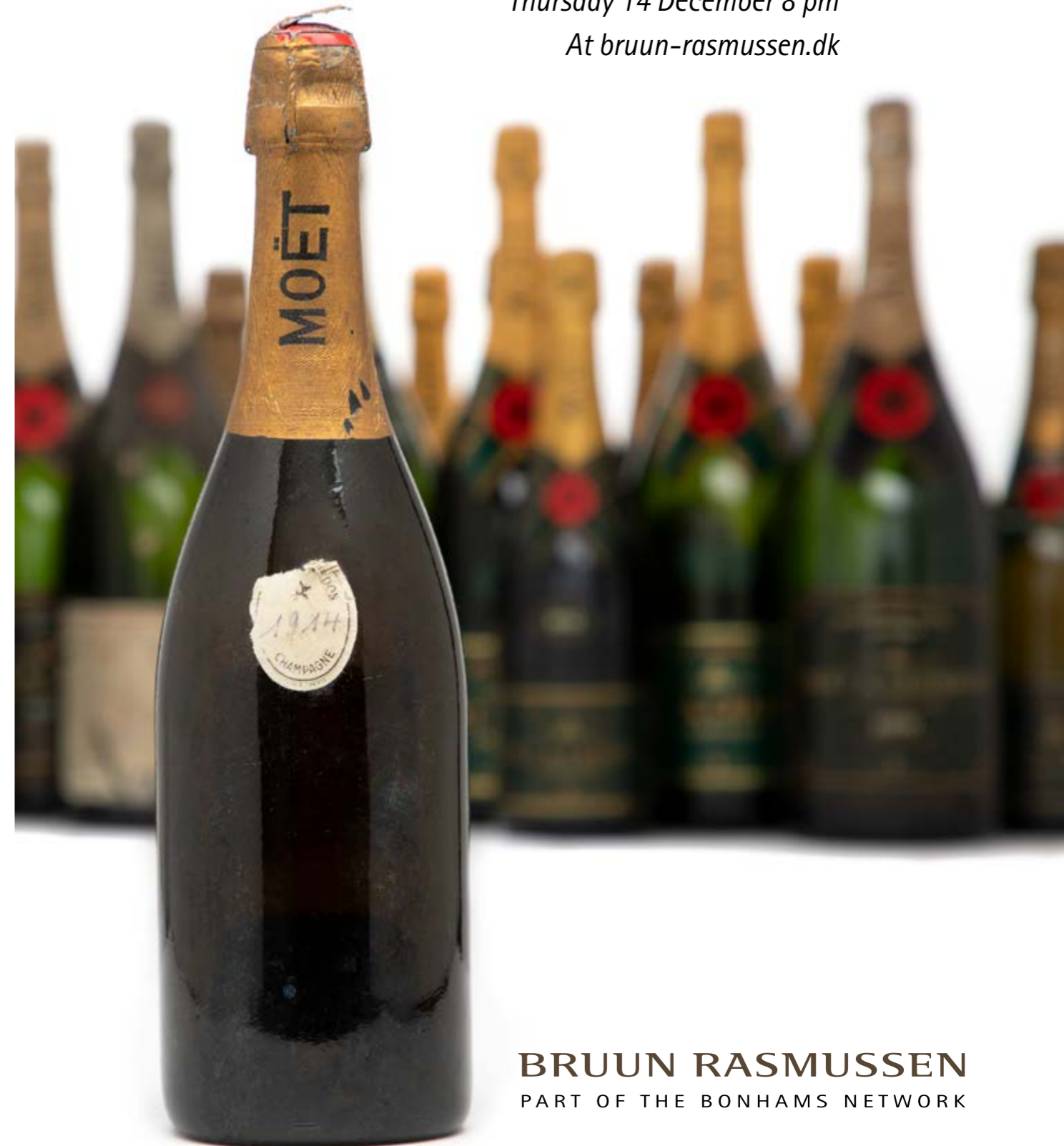
At bruun-rasmussen.dk



3053



3067



3053

6 bts. Château Latour, Pauillac. 1. Cru Classé 1982
Owc. DKK 55,000–75,000 / € 7,400–10,000

3067

12 bts. Château Latour, Pauillac. 1. Cru Classé 2009
A (hf/in). Owc. DKK 70,000–90,000 / € 9,400–12,000

INDEX

A

A. Lange & Söhne	1138
Andersen, Knud V.	1074
Audemars Piguet	1152, 1167

B

Bicego, Marco	1024
Bille Brahe, Sophie	981
Bolou	953, 1087
Borup, Per	975
Boucheron	1028
Breguet	1169
Breitling	1119, 1127, 1129, 1133
Bulgari	964, 1082
Bülou-Hübe, Vivianna Torun	1044

C

Cartier	955, 956, 966, 995, 1016, 1027, 1068, 1069, 1084, 1147, 1161
Chanel	1090, 1092, 1093, 1094, 1095, 1096, 1097, 1098, 1099, 1100, 1101, 1102, 1103, 1104
Chopard	976, 1135

D

Dior, Christian	1089
Dragsted, A.	979

E

Eterna	1172
--------	------

G

Griegst, Arje	989, 990, 991, 992
Gübelin	972

H

Hartmann's	902, 950, 1043
Hermès	1105
Holmstrup, V.	963
Hublot	1116

I

IWC	1141, 1143, 1146
-----	------------------

J

Junget, Willy	1010
Jürgensen, Urban	1139, 1142

K

Kløve, Jytte	954
Knudsen, Bent	1053

L

Lapponia	977, 1029
Lynggaard, Ole	901, 925, 1076 1079, 1080

M

Mauboussin	1014
Michelsen, A.	944, 1074, 1075

O

Omega	1110, 1111, 1112 1113, 1120, 1121, 1128, 1130, 1131, 1132, 1158, 1159, 1166
-------	---

P

Panerai	1118
Patek Philippe	1134, 1140, 1145 1160, 1165, 1168, 1173, 1176
Piaget	1136, 1144

R

Reeslev	1015
Rolex	1106, 1107, 1108, 1109, 1114, 1115, 1117, 1122, 1123, 1125, 1148, 1149, 1150, 1151, 1153, 1154, 1155, 1156, 1157, 1162, 1163, 1164
Rørvig, John	957

S

Schoeffel	1032
Selzer, Thor	968
Svart, Ruben	994, 1013

T

Temple, Charles Henry	961
Tiffany & Co.	1051, 1066
Trolle, Natascha	969, 978

U

Ulysse Nardin	1170
---------------	------

V

Van Cleef & Arpels	1137
Vuitton, Louis	1091

W

Walter-Rasmussen, H.	915
Weckström, Björn	974
Worboys	1002

Bruun Rasmussen **LIVE**

– bid from wherever you are!

Experience the atmosphere of the saleroom

If you are unable to attend the Live Auctions in person, you can follow an auction in progress and experience the atmosphere in the saleroom via live streaming – just as if you were there.

Bid via Bruun Rasmussen Live

Shortly before the auction begins, you will be able to see the orange “Live” icon next to the auction in question at bruun-rasmussen.dk. Click on the icon to follow the auctioneer during the auction.

If you wish to submit a bid, simply log in prior to the auction.

The bidding process

Your bid will be treated in the same way as the bids submitted by those present in the room. If your bid is successful, you will be required to pay the standard costs which apply to all purchases from Bruun Rasmussen according to the conditions of purchase. Bruun Rasmussen accepts no liability for bids lost as a result of technical problems.

Technical assistance

If you require technical assistance, please contact our IT support team on tel. +45 8818 1114 or e-mail: support@bruun-rasmussen.dk

Please note that we are also on hand during the auctions to deal with any technical issues.



Disse købsvilkår udgør Bruun Rasmussen Kunstauktioner A/S' ("BRK") købsvilkår for traditionelle auktioner og er gældende fra 1. februar 2017. BRK kan til enhver tid ændre købsvilkårene.

Ved bud accepterer budgiver/køber at være bundet af de til enhver tid gældende købsvilkår, som fremgår på bruun-rasmussen.dk. Købsvilkårene gælder både i forhold til erhvervsdrivende og forbrugere.

FØR AUKTIONEN

1 VURDERING AF GENSTANDE

1.1 Alle udbudte genstande er vurderet af BRK. Vurderingen er et skøn over det forventede hammerslag, jf. punkt 5.3. Vurderingen er baseret på tidligere salg af samme type genstande og erfaringer hos BRK. Hammerslag kan derfor falde højere eller lavere ud end vurderingen.

2 BESKRIVELSE AF GENSTANDE

2.1 Udbudte genstande præsenteres med fotos og beskrivelse i kataloger og på bruun-rasmussen.dk. Beskrivelsen foretages efter bedste overbevisning af BRK og ud fra en nøje undersøgelse efter den på salgstidspunktet herskende opfattelse blandt eksperter.

2.2 De udbudte genstande er af en alder og art, der bevirker, at de ofte er behæftede med slitage, mangler, beskadigelser og reparationer. Som udgangspunkt sælges alt som brugte genstande, og derfor indeholder beskrivelsen i kataloget og på bruun-rasmussen.dk ikke en redegørelse for ovenstående punkter eller genstandens stand.

2.3 I visse tilfælde vælger BRK at beskrive en genstands oprindelse. Det sker, hvis en tidligere ejer er offentlig kendt, og/eller hvis historien om et tidligere ejerskab belyser genstanden og dens art. Omvendt sker det også, at sådanne informationer udelades fra beskrivelsen, f.eks. for at imødekomme sælgers ønske om diskretion.

2.4 Vurderingen og beskrivelsen kan blive revideret forud for auktionen. Ændringer offentliggøres på bruun-rasmussen.dk

3 EFTERSYN

3.1 Udbudte genstande udstilles op til auktionen i et show-room hos BRK. Potentielle budgivere opfordres til at se genstanden efter i detaljer og har selv ansvaret for at forvise sig om dens stand på disse eftersyn, hvor der også er mulighed for at rådføre sig hos vurderingssagkyndige.

3.2 Hvis en potentiel køber ikke har mulighed for at besigtige genstanden ved selvsyn, kan der i de fleste tilfælde udfærdiges en konditionsrapport. Beskrivelsen heri er foretaget efter BRK's bedste overbevisning, men er ikke baseret på videnskabelige undersøgelser. En konditionsrapport tjener blot som identifikation og er ment som en hjælp til budgivere, der ikke selv har mulighed for at besigtige genstanden på eftersynet.

UNDER AUKTIONEN

4 BRK'S ROLLE

- 4.1 Salget af en genstand formidles af BRK på vegne af sælger. BRK afhænder altid udbudte genstande til den højst mulige pris under budgivningen.
- 4.2 Udbudte genstande kan have en med sælger aftalt mindstepris, hvorunder den ikke kan sælges. Denne pris er fortrolig.
- 4.3 De traditionelle auktioner overværes af en af Justitsministeriet beskikket auktionsleder, der sikrer, at auktionerne går retmæssigt for sig.

5 BUDGIVNING

- 5.1 Auktionerne afvikles i danske kroner. De tilnærmelsesvis beløb i euro/US dollar vil blive oplyst på skærme i auktionssalen og i øvrigt på opfordring.
- 5.2 Auktionarius bestemmer overbuds størrelse og i hvilket tempo, auktionen afvikles. Overbud stiger normalt med 5 % - 10 % i forhold til det foregående bud. Normalt sælges der 50-100 katalognumre i timen.
- 5.3 Hammerslag betegner både det forhold, at auktionarius slår med hammeren og derved markerer budgivningens afslutning, og den pris (budsum), den udbudte genstand sælges til. Se punkt 7 vedrørende beløb, der tillægges hammerslaget.
- 5.4 Køber er den budgiver, der opnår hammerslag. Ved hammerslaget indgås på baggrund af disse købsvilkår en bindende købs-/salgsaftale.
- 5.5 Bydes på andres vegne, hæfter budgiver som selvskyldnerkautionist for handlen.
- 5.6 Genstande købes som beset, og køber har uanset budtype ingen fortrydelsesret, heller ikke efter forbrugeraftaleloven.
- 5.7 Budgiver skal efter anvisninger fra BRK identificere sig og dokumentere sin betalingsdygtighed, f.eks. ved registrering af gyldigt betalings-/kreditkort, bankgaranti eller indbetaling af depositum.
- 5.8 BRK kan nægte at acceptere et bud, hvis en tilstrækkelig sikkerhed for betaling mangler, eller hvis budgiver tidligere har misligholdt betalingsforpligtigelser ved køb hos BRK.
- 5.9 Auktionslederen træffer i samråd med auktionarius afgørelse i alle tvivlstilfælde omkring budgivningen.

6 BUDTYPER

6.1 Der er følgende muligheder for at afgive bud:

PERSONLIGT FREMMØDE:

Registrering og udlevering af bydeskilt foregår ved indgangen til auktionssalen. Når budgiver ønsker at byde, signaleres dette til auktionarius ved at række bydeskiltet i vejret og tydeligt fremvise dets nummer.

KOMMISSIONSBUD:

Det ønskede maksimale bud kan afgives via bruun-rasmussen.dk frem til auktionens start eller pr. e-mail, fax eller telefon, så budet er modtaget senest 24 timer forud for auktionens start. En kommissionær byder på budgivers vegne inden for rammerne af det ønskede maksimalbud og vil altid afgive lavest muligt overbud.

TELEFONBUD:

I forhold til visse genstande er der mulighed for at blive ringet op af en medarbejder fra BRK, der vil byde på budgivers vegne under auktionen. Servicen kan bestilles via bruun-rasmussen.dk indtil tre timer før auktionens start.

LIVE BIDDING:

Det er muligt at følge auktionen live og byde med via bruun-rasmussen.dk

FORAUKTION:

Visse traditionelle auktioner indledes med en net-auktion. De højeste bud på net-auktionen danner udgangspunktet på den efterfølgende traditionelle auktion.

EFTER AUKTIONEN

7 BELØB, DER TILLÆGGES HAMMERSLAGET

- 7.1 I tillæg til hammerslaget, jf. punkt 5.3, skal køber for den enkelte genstand betale købersalær og, hvis betingelserne er opfyldt, de øvrige beløb, der er nærmere beskrevet nedenfor. Det samlede beløb, som køber skal betale til BRK, benævnes "købesummen".
 - 7.1.1 Købersalær: Hammerslaget tillægges et salær til BRK. På de traditionelle auktioner udgør salæret 25,6 % af hammerslaget + moms af salæret, i alt 32 %. For frimærker og mønter udgørsalæret 20 % af hammerslaget + moms af salæret, i alt 25 %.
 - 7.1.2 "LIVE bidding": BRK's "LIVE bidding"-software via bruun-rasmussen.dk er gratis at benytte for budgivere.
 - 7.1.3 Fuldmoms: Visse genstande handles efter de gældende regler om fuldmoms. Her beregnes der moms på 25 % af både hammerslag og salær. Disse genstande er i beskrivelsen i kataloget og på bruun-rasmussen.dk mærket med symbolet "*" eller med teksten: "Dette emne handles i fuldmoms".
 - 7.1.4 Kunstnerafgift: Ifølge dansk lovgivning om ophavsret skal der opkræves kunstnerafgift (følgeretsvederlag) for værker af nyere danske og visse udenlandske kunstnere, som enten er nulevende eller ikke har været døde i mere end 70 år. Kunstnerafgiften opkræves på vegne af VISDA. Disse værker er i kataloget mærket med "ARR" (Artist's Resale Right) og på bruun-rasmussen.dk med teksten "Dette emne er belagt med kunstnerafgift". Kunstnerafgiften tillægges hele hammerslaget + salær (ekskl. moms), når beløbet overstiger 300 euro, som angivet nedenfor:

Hammerslag + salær (ekskl. moms)	Betalingssats
300,01 - 50.000 euro	5%
50.000,01 - 200.000 euro	3%
200.000,01 - 350.000 euro	1%
350.000,01 - 500.000 euro	0.5%
over 500.000 euro	0.25%

Kunstnerafgiften kan ikke overstige 12.500 euro (ekskl. moms) for den enkelte genstand. Afgiften skal betales i danske kroner, og omregningskursen (EUR/DKK) fastsættes af VISDA.

7.1.5 Betalings-/kreditkortgebyr: BRK forbeholder sig ret til at opkræve de af indløsningselskaberne pålagte betalings-/kreditkortgebyrer. Satserne fremgår ved budgivning via bruun-rasmussen.dk og ved betaling.

8 BETALINGSFRIST

8.1 Købesummen forfalder til betaling ved hammerslaget, og køber har herefter otte dage til at betale købesummen til BRK.

9 BETALINGSMÅDER

9.1 Betaling kan ske på følgende måder:

A: Med betalings-/kreditkort (Dankort, Visa, MasterCard, Maestro, Diners Club, JCB og China UnionPay) eller kontant (op til 19.999 kr.) i auktionssalen eller efterfølgende i en afdeling hos BRK. Bemærk, at vi ikke modtager 500-eurosedler.

B: Med betalings-/kreditkort (Dankort, Visa, MasterCard, Maestro, Diners Club og JCB) på bruun-rasmussen.dk under købers personlige side.

C: Via bankoverførsel til BRK's konto i Danske Bank: 4183 4310970638 · Swift/BIC: DABADKDK · IBAN: DK4130004310970638.

10 MOMSFRTAGELSE, -BETALING OG -DEPONERING

10.1 Visse købere kan vælge hvilken momstype, der skal være gældende for handlen. Valget skal meddeles BRK senest to hverdage efter købet og kan ikke omgøres.

A: Momsregistrerede virksomheder i Danmark kan vælge, at handlen skal ske efter reglerne om fuldmoms, jf. punkt 7.1.3.

B: Momsregistrerede virksomheder i et andet EU-land kan fritages for dansk moms, når det kan dokumenteres, at genstanden er transporteret til den udenlandske adresse, som køber har oplyst over for BRK, og som er anført på fakturaen. I sådanne tilfælde skal der afregnes moms efter de gældende regler i det land, hvor køber er momsregistreret. Det tilrådes at søge oplysning hos de lokale myndigheder. Køber kan undlade at gøre brug af muligheden for momsfritagelse og i stedet betale dansk brugtmoms/fuldmoms.

C: Købere med bopæl uden for EU kan fritages for dansk moms, når det kan dokumenteres, at genstanden er transporteret ud af EU. BRK udsteder så vidt muligt og mod gebyr de fornødne eksportpapirer, som skal fremvises ved toldmyndighederne. Køber kan undlade at gøre brug af muligheden for momsfritagelse og i stedet betale dansk brugtmoms/fuldmoms.

10.2 Momsregistrerede virksomheder i et andet EU-land og købere med bopæl uden for EU skal deponere den danske moms af fakturabeløbet hos BRK, indtil eksporten er gennemført på dokumenteret lovligt vis. Foretages eksporten af en af BRK godkendt speditor, skal momsens ikke deponeres. Se listen over godkendte speditorer på bruun-rasmussen.dk

11 OVERSKRIDELSE AF BETALINGSFRIST

11.1 Overskrides en betalingsfrist, herunder fristen i punkt 8, opkræves morarenter, som beregnes efter Nationalbankens officielle udlånsrente + 8 % om året af det skyldige beløb.

11.2 Betales købesummen inkl. renter ikke senest ti dage efter, at der er fremsat påkrav herom, er BRK berettiget til at søge købesummen betalt ved modregning i depositum/ved træk på bankgaranti eller at hæve købet.

11.3 Hæves købet, er BRK berettiget til at sælge genstanden på en ny auktion og kræve omkostningerne og en eventuel difference mellem hammerslag (samt salær), der er opnået på de to auktioner, betalt af den misligholdende køber.

11.4 Alle forfaldne krav (inkl. omkostninger), som ikke betaales rettidigt, kan BRK i tillæg til inkasso søge inddrevet på følgende måder:

A: For købers regning sælge genstande indleveret til auktion af eller på vegne af køber. Salget kan gennemføres uden hensyntagen til en aftalt mindstepris. Genstande indleveret til auktion kan ikke kræves udleveret, så længe forfalden gæld henstår ubetalt.

B: Inddrage købers tilgodehavende hos BRK, herunder tilgodehavende fra salg af genstande indleveret af eller på vegne af køber, uanset om et sådant tilgodehavende stammer fra auktionssalg, som ligger forud for eller efter tidspunktet for købers misligholdelse.

12 AFHENTNING OG UDLEVERING

- 12.1 Ejendomsretten til en købt genstand overgår til køber, når hele købesummen inkl. eventuelle renter og gebyrer er betalt, og først herefter kan udlevering af genstanden finde sted.
- 12.2 Ved udlevering af en købt genstand forbeholder BRK sig retten til at kræve tilfredsstillende dokumentation for, at den person, som ønsker genstanden udleveret, enten selv er køberen eller er bemyndiget af køberen til at få genstanden udleveret.
- 12.3 Udlevering af visse våben kræver forevisning af gyldig våbentilladelse. Sådant krav er angivet med teksten "Køb af dette emne kræver forevisning af gyldig våbentilladelse" i kataloget og på bruun-rasmussen.dk
- 12.4 Købte genstande henligger fra hammerslaget for købers regning og risiko. Afhentning skal ske senest otte hverdage efter sidste auktionsdag.
- 12.5 Foretages afhentningen ikke rettidigt, transporteres de købte genstande til et lager for købers regning og risiko. Transporten koster 150 kr. inkl. moms pr. genstand, og opbevaringen koster 150 kr. inkl. moms pr. genstand pr. påbegyndt uge. Henligger en genstand uafhentet i så lang tid, at lagerlejen overstiger genstandens værdi, er BRK berettiget til for købers regning og risiko og uden hensyn til mindstepris at bortauktionere genstanden eller sælge den underhånden. Køber hæfter til transport og lagerleje, der ikke dækkes ved sådant salg.
- 12.6 I henhold til gældende hvidvasklovgivning skal køber i visse tilfælde udlevere identitetsoplysninger og fremvise billed-id til BRK, før køber kan få den købte genstand i sin besiddelse

13 FORSENDELSE

- 13.1 Er køber forhindret i selv at afhente en genstand, tilbyder BRK for købers regning og risiko at emballere og arrangere forsendelse enten med post eller speditør. Se punkt 12.2 angående legitimation.

14 EKSPORTTILLADELSE

- 14.1 For at sikre at dansk kulturarv af afgørende betydning forbliver i Danmark, kan Kulturværtdiudvalget for visse genstandes vedkommende nedlægge eksportforbud. Hvis køber ønsker at eksportere en genstand ud af Danmark, hvor der er nedlagt et eksportforbud, annulleres købet, og Kulturværtdiudvalget er forpligtet til at overtage genstanden til den pris, der blev opnået på auktionen. Køber kan ikke rejse krav mod BRK som følge af, at et eksportforbud bliver nedlagt.
- 14.2 Visse genstande er omfattet af Washingtonkonventionen, også kendt som CITES, der har til formål at stoppe ulovlig handel med genstande fremstillet af udryddelsestruede vilde dyr og planter. Såfremt en genstand er omfattet af Washingtonkonventionen, CITES, liste 1, vil det fremgå af beskrivelsen på bruun-rasmussen.dk og være markeret med symbolet "©" i kataloget. Følgende regler gør sig gældende:
 - A: Genstande omfattet af Washingtonkonventionen, CITES, liste 1, må kun handles, når der foreligger en dispensation i form af et såkaldt CITES-salgscertifikat. BRK indhenter det fornødne certifikat fra Naturstyrelsen, der tillader handel og eksport til lande inden for EU. Dog kan genstande, som er færdigforarbejdet før 1947, frit handles inden for EU uden et certifikat.
 - B: Det er alene genstande omfattet af Washingtonkonventionen, CITES, liste 1, som er særkilt markeret på bruun-rasmussen.dk og i kataloget. Genstande omfattet af Washingtonkonventionen, CITES, liste 2, der frit kan sælges og transporteres inden for EU, er ikke særkilt markeret.
 - C: Ved eksport til lande uden for EU skal der uanset årstallet for genstandens færdigforarbejdning altid indhentes en CITES-reeksporttilladelse fra Naturstyrelsen,

når genstanden er omfattet af Washingtonkonventionen, CITES, liste 1 og 2. Denne eksporttilladelse kan normalt indhentes problemfrit, når liste 1-genstande enten er solgt med et CITES-salgscertifikat eller er færdigforarbejdet før 1947. Liste 2-genstande opnår ligeledes normalt problemfrit en reeksporttilladelse. Eventuelle omkostninger, der opkræves af de danske myndigheder i forbindelse med udstedelse af en reeksporttilladelse, vil blive pålagt købers faktura.

D: I forbindelse med eksport til lande uden for EU kan særlige regler gøre sig gældende ifm. den efterfølgende import, og køber opfordres til at indhente oplysninger fra egne myndigheder.

15 MANGLER VED KØBTE GENSTANDE

- 15.1 Købelovens mangelsregler kan finde anvendelse. Nedenfor er angivet et ikke udtømmende uddrag af købers mangelsbeføjelser.
- 15.2 Køber er berettiget til at annullere et køb, hvis beskrivelsen har været behæftet med væsentlige fejl, der har ført til et højere hammerslag, end en korrekt beskrivelse ville have resulteret i. I sådanne tilfælde vil den samlede købesum blive refunderet. Køber kan ikke kræve betaling af renter af købesummen eller kræve dækning af anden udgift eller tab.
- 15.3 Et køb kan ikke annulleres, og køber kan ikke kræve købesummen refunderet eller rejse noget andet krav mod BRK, hvis beskrivelsen af genstanden er i overensstemmelse med punkt 2, eller hvis en påvisning af falskneri havde krævet brug af videnskabelige metoder, der enten ikke var tilgængelige på salgstidspunktet, havde været uforholdsmæssigt omkostningskrævende at anvende eller havde ført til beskadigelse af den pågældende genstand.
- 15.4 Krav om annullering af et køb skal meddeles BRK, når køber er blevet bekendt med det forhold, der berettiger køber til at annullere købet, dog senest to år fra den seneste afhentningsdato efter punkt 12.4. Den købte genstand skal returneres til BRK i samme stand som på hammerslagstidspunktet. Overholdes disse betingelser ikke, mister køber retten til at annullere købet og kan ikke kræve købesummen refunderet. Køber er selv ansvarlig for at betale de omkostninger, der er forbundet med returnering af genstanden.

16 INDSIGELSE- OG ANSVARSBEGRÆNSNING

- 16.1 BRK tager forbehold for fejl, tekniske vanskeligheder samt udefrakommende misbrug eller forstyrrende påvirkning under auktionen. Budgetgiver kan ikke rejse noget krav mod BRK som følge heraf.
- 16.2 Køber er i alle tilfælde selv ansvarlig for korrekt betaling af moms og andre afgifter, gebyrer mv. i overensstemmelse med danske og udenlandske regler.
- 16.3 Medmindre andet fremgår af disse købsvilkår, kan BRK aldrig blive ansvarlig for budgetgivers/købers driftstab, avancetab, andre indirekte tab eller følgeskader.

17 PERSONDATAPOLITIK

- 17.1 Det er vigtigt for BRK at sikre fortrolighed og sikkerhed omkring budgetgivers/købers personlige oplysninger. Persondatapolitikken fremgår af bruun-rasmussen.dk.

18 KLAGE, TVISTLØSNING OG LOVVALG

- 18.1 Har budgetgiver/køber en klage, kan der altid rettes henvendelse til BRK.
- 18.2 Lykkes det ikke at finde en løsning, kan forbrugere sende en klage til Nævnenes Hus, Toldboden 2, 8800 Viborg, e-mail: naevneneshus.dk. Forbrugere med bopæl i et andet EU-land end Danmark kan klage til EU-Kommissionens online klageportal via hjemmesiden: <http://ec.europa.eu/odr>.
- 18.3 Tvister skal indbringes i Danmark ved Københavns Byret, jf. dog punkt 18.2. I forbrugerforhold gælder de ufravigelige værnetingsregler.

Bruun Rasmussen Kunstauktioner

Rev. 06.23

CONDITIONS OF PURCHASE – LIVE AUCTIONS

These conditions of purchase represent Bruun Rasmussen Kunstauktioner A/S' ("BRK") conditions of purchase for live auctions and are effective from 1 January 2017. BRK may modify the conditions of purchase at any time.

By bidding, the bidder/buyer accepts the current conditions of purchase as they appear on bruun-rasmussen.dk. The conditions of purchase are applicable to both business owners and consumers.

BEFORE THE AUCTION

1 VALUATION OF ITEMS

- 1.1 All the offered items are valued by BRK. The valuation is an estimate based on the expected hammer price, see paragraph 5.3. The estimate is based on the previous sale of similar items as well as BRK's past experience. The hammer price can therefore be higher or lower than the estimated price.

2 DESCRIPTION OF ITEMS

- 2.1 Items up for auction are presented with photographs and descriptions in catalogues and on bruun-rasmussen.dk. The description is worded according to the best of BRK's knowledge and based on detailed research in accordance with the prevailing views among experts at the time of sale.
- 2.2 The items up for auction are of an age and nature that often mean that they are in a worn, repaired or damaged condition. As a starting point everything is sold as used items. For this reason, the descriptions in the catalogue or at bruun-rasmussen.dk do not include a statement regarding the above or the condition of the item.
- 2.3 In some cases, BRK may choose to describe an item's provenance. Such a description is made if a former owner is publicly known and/or if the story of previous ownership sheds further light on the item and its background. In other cases, such information is left out of the description, for instance to meet the seller's wish for privacy.
- 2.4 It is possible that the estimate and description are revised prior to the auction. Changes are published on BRK's website.

3 PREVIEW

- 3.1 Items up for auction are presented prior to the auction in one of BRK's showrooms. Potential bidders are encouraged to inspect the items closely and are responsible for determining the condition of the items at these previews, where they also have the opportunity to consult with the valuation experts.
- 3.2 If a potential buyer does not have the opportunity to inspect the item personally, a condition report can be drafted in most cases. The description in this report has been made according to BRK's honest conviction but is not based on scientific studies. A condition report only serves as an identification and is meant as an aid to bidders who do not have the opportunity to inspect the item at the preview.

DURING THE AUCTION

4 THE ROLE OF BRK

- 4.1 The sale of an item is facilitated by BRK on behalf of the seller, and BRK always sells items up for auction at the highest price offered during the bidding round.

- 4.2 Items up for auction can have a reserve price that has been agreed upon with the seller. The price is confidential and the item cannot be sold below this price.
- 4.3 The live auctions are presided over by one of the Danish Ministry of Justice's appointed auctioneers, ensuring that the auctions proceed correctly and lawfully.

5 BIDDING

- 5.1 The currency used while the auctions take place is Danish kroner. The approximate amount in euro/US dollars is shown on screens in the saleroom and also on request.
- 5.2 The auctioneer determines the size of the bid increment and the pace of the auction. Bid increments usually rise by 5% - 10% compared to the previous bid. Approximately 50-100 auction lots are sold per hour.
- 5.3 The hammer price refers both to the gavel used by the auctioneer that signifies the end of a bidding round on an item and to the price (bidding amount) that the item up for auction is sold for. See paragraph 7 regarding amounts added to the hammer price.
- 5.4 The buyer is the bidder that submits the highest bid, thereby obtaining the hammer price. At the moment the hammer price is determined, a binding purchase/sale agreement is entered into based on these conditions of purchase.
- 5.5 If bids are made on behalf of others, the bidder serves as surety for the transaction.
- 5.6 Items are purchased in their present state and condition, and regardless of the type of bidding the buyer has no right to cancel his purchase, neither under the Danish Consumer Contracts Act.
- 5.7 Bidders are required, in accordance with BRK's instructions, to identify themselves and document their ability to pay, for instance by registration of a valid debit/credit card, bank guarantee or a deposit.
- 5.8 BRK may refuse to accept a bid if a sufficient guarantee of the bidder's ability to pay is not provided, or if the bidder has previously defaulted on payment obligations on purchases from BRK.
- 5.9 The overseeing auctioneer will, in consultation with the auctioneer at the podium, decide what to do in matters of dispute concerning a bidding round.

6 TYPES OF BIDDING

- 6.1 Bidding options:
 - IN PERSON:**
Registration and obtaining the bidding paddle take place at the entrance to the saleroom. When the bidder wishes to bid, it is signalled to the auctioneer on the podium by raising the bidding paddle in the air and clearly displaying its number.
 - COMMISSION BIDS:**
The intended maximum bid can be submitted via bruun-rasmussen.dk until the start of the auction or by e-mail, fax or phone, so that the bid is received no later than 24 hours prior to the start of the auction. A commission agent bids on behalf of the bidder within the limits of the stated maximum bid. The commission agent will always bid the lowest possible amount to achieve the hammer price.

TELEPHONE BID:

With certain items it is possible to have a BRK employee call the bidder over the phone. The employee will then bid on behalf of the bidder during the auction. The service can be booked via bruun-rasmussen.dk up until three hours before the auction is set to begin.

LIVE BIDDING:

It is possible to follow the auction live and bid on the auction lots via bruun-rasmussen.dk.

PRE-AUCTION:

Some live auctions are preceded by an online auction. The highest bids from the online auction then represent the starting bids at the following live auction.

AFTER THE AUCTION

7 AMOUNTS ADDED TO THE HAMMER PRICE

- 7.1 In addition to the hammer price, see paragraph 5.3, the buyer pays a buyer's premium for the individual items as well as the other amounts described below if the conditions for these are applicable. The total amount that the buyer pays to BRK is called the "purchase price".
- 7.1.1 Buyer's Premium: The hammer price always includes an additional fee to BRK. At the live auctions, the fee is 25,60% of the hammer price + VAT of the fee, 32% in total. For stamps and coins, the fee is 20% of the hammer price + VAT of the fee, a total of 25%.
- 7.1.2 "LIVE Bidding": BRK's "LIVE Bidding" software is free to use for bidders on bruun-rasmussen.dk.
- 7.1.3 Full VAT: Certain items are sold at auction in accordance with the current rules regarding full VAT. In such a situation, a VAT of 25% is imposed on both the hammer price and the buyer's premium. These items are marked in the catalogue and on bruun-rasmussen.dk with the symbol "***", or with the text: "This item is subject to full VAT".
- 7.1.4 Artist's Resale Right: In accordance with Danish copyright law, a royalty fee covering the Artist's Resale Right has to be charged for works by newer Danish artists, and some foreign artists, who are either alive or have not been dead for more than 70 years. The royalty fee covering the Artist's Resale Right is charged on behalf of VISDA (Visual Rights Denmark). These works are marked "ARR" in the printed catalogue, and on bruun-rasmussen.dk the description of the works includes the text: "This lot is subject to the Artist's Resale Right". The royalty fee covering the Artist's Resale Right is added to the hammer price + the buyer's premium (excluding VAT) if the amount exceeds EUR 300, as indicated below:

Hammer price + buyer's premium (ex. VAT)	Payment Rate
300,01 - 50,000 euro	5%
50,000,01 - 200,000 euro	3%
200,000,01 - 350,000 euro	1%
350,000,01 - 500,000 euro	0.5%
over 500,000 euro	0.25%

The royalty fee covering the Artist's Resale Right cannot exceed EUR 12,500 (excluding VAT) for each item. The fee must be paid in Danish kroner, and the conversion rate (EUR/DKK) is set by VISDA.

- 7.1.5 Debit/Credit Card Fee: Amounts Added to the Hammer Price: BRK reserves the right to charge the debit/credit card fees imposed by the payment services companies. The rates will appear when bidding on bruun-rasmussen.dk and at payment.

8 PAYMENT DEADLINE

- 8.1 The purchase price falls due after the hammer price has been determined, and then the buyer has eight days to pay BRK the purchase price.

9 PAYMENT METHODS

- 9.1 The payment can be made in the following ways:
- A: With debit/credit card (Visa, MasterCard, Maestro, Diners Club, China UnionPay and JCB) or cash (up to DKK 19.999) in the saleroom or subsequently at one of

BRK's locations. Please note that we do not accept EUR 500 banknotes.

- B: With debit/credit card (Dankort, Visa, MasterCard, Diners Club and JCB) via BRK's website on the buyer's personal page.
- C: By bank transfer into BRK's account with Danske Bank: 4183 4310970638 · Swift/BIC: DABADKKK · IBAN: DK4130004310970638.

10 VAT EXEMPTION, PAYMENT & DEPOSIT

- 10.1 Some buyers can choose which type of VAT should apply to the transaction. The choice has to be communicated to BRK no later than two working days after the purchase and cannot be changed subsequently.
- A: Businesses in Denmark registered for VAT can decide that the transaction is to be conducted in accordance with the rules for full VAT, see paragraph 7.1.3.
- B: Businesses registered for VAT in another EU Member State can be exempted from paying Danish VAT if it can be proved that the item has been transported to the foreign address that the buyer has registered with BRK and which is written on the invoice. In such cases, the VAT should be settled according to the rules applicable in the country where the buyer is registered for VAT. It is advisable to consult with the local authorities. The buyer can decide not to be exempt from regular VAT and instead pay Danish VAT on second-hand goods/full VAT.
- C: Buyers residing outside the EU can be exempted from Danish VAT if it can be proved that the item has been transported out of the EU. To the extent possible and for a fee, BRK can issue the necessary export documents for the customs authorities. The buyer may decide not to be exempt from regular VAT and instead pay Danish VAT on second-hand goods/full VAT.
- 10.2 Companies registered for VAT in another EU Member State and buyers residing outside the EU must deposit the Danish VAT on the amount invoiced with BRK until the export process has been completed in a documented, lawful fashion. If the export is undertaken by one of BRK's authorized forwarding agents, the VAT does not have to be deposited. See the list of authorized forwarding agents on bruun-rasmussen.dk.

11 OVERDUE PAYMENTS

- 11.1 If payment is made after a deadline, including the deadline specified in paragraph 8, interest on overdue payments will be charged and estimated in accordance with the Danish Central Bank's official lending rate + 8% per year on the amount due.
- 11.2 If the purchase price, including interest, has still not been paid ten days after the demand for payment has been made, BRK is entitled to seek the purchase price paid by making a set-off against the deposit/by drawing on the bank guarantee or to cancel the purchase.
- 11.3 If the purchase is cancelled, BRK is entitled to sell the item at a new auction and demand the costs and any difference between the new and the earlier hammer price (including the buyer's premium) covered by the defaulting buyer.
- 11.4 In addition to debt collection, BRK may seek recovery of all due claims (including costs) not paid in a timely manner in the following ways:
- A: Making the buyer cover the costs of selling items consigned to auction by or on behalf of the buyer. The sale can be conducted without regard to an agreed reserve price. Items consigned for auction cannot be collected as long as overdue debts are unpaid.
- B: Seizing the buyer's remaining balance with BRK, including the balance from the sale of items consigned by or on behalf of the buyer, regardless of whether such receivables derive from auction sales prior to or after the date of the buyer's default on the payment.

12 PICK-UP & COLLECTION

- 12.1 The title to a purchased item passes to the buyer when the full purchase price, including any interest and fees, has been paid, and only then can the collection of an item take place.
- 12.2 In connection with the collection of a purchased item, BRK reserves the right to demand satisfactory documentation that the person who wants to pick up the item is either the buyer himself/herself or authorized by the buyer to receive the item on his/her behalf.
- 12.3 The collection of certain weapons requires presentation of a valid weapons certificate. Items with such requirements are listed with the text: "The purchase of this item requires the presentation of a valid weapons certificate" in the catalogue and on bruun-rasmussen.dk.
- 12.4 Purchased items are stored after the auction at the buyer's expense and risk. Pick-up must take place no later than eight working days after the last auction day.
- 12.5 If the item(s) is/are not picked up on time, the purchased items will be transported to a warehouse at the buyer's risk and expense. The transport costs are DKK 150 including VAT per item and the storage costs are DKK 150 including VAT per item for each week or part of a week. If an item is left unclaimed for an amount of time that results in the storage costs exceeding the value of the item, BRK will be entitled to, at the buyer's expense and risk and without regard to the reserve price, sell the item at an auction or privately. The buyer is still liable for the costs of transportation and storage not covered by such sale.
- 12.6 In accordance with current anti-money laundering laws, the buyer must in certain cases submit personal information and present a photo ID to BRK before the buyer can have the purchased item placed in his possession.

13 SHIPPING

- 13.1 If the buyer is unable to pick up the purchased item, BRK offers to pack and arrange delivery either by mail or by freight forwarder at the buyer's risk and expense. See paragraph 12.2 regarding identification.

14 EXPORT LICENSE

- 14.1 To ensure that Danish cultural heritage of vital importance remains in Denmark, the Danish Cultural Assets Commission can place an export ban on certain items. If the buyer wishes to export an item that is subject to an export ban in Denmark, the purchase will be cancelled and the Danish Cultural Assets Commission is obliged to acquire ownership of the item for the price obtained at auction. The buyer cannot raise any claims against BRK as a result of an export ban.
- 14.2 Certain items are included in the Washington Convention, also known as CITES. The purpose of CITES is to stop the trade of items made with endangered species and flora. If the item is included in the Washington Convention, CITES, Appendix 1, this will appear in the description of the item on bruun-rasmussen.dk and be marked with the symbol "☉" in the catalogue. The following rules are applicable:
- A: Items that are included in the Washington Convention, CITES, Appendix 1, can only be traded when a dispensation in the form of a CITES certificate has been obtained. BRK obtains the required certificate from the Danish Nature Agency that allows trade and export to countries within the EU. Items that were produced before 1947 can, however, be freely traded within the EU without a certificate.
- B: It is only items included in the Washington Convention, CITES, Appendix 1 that are marked individually on bruun-rasmussen.dk and in our catalogue. Items included in the Washington Convention, CITES, Appendix 2, which can be freely sold and transported within the EU, are not individually marked.
- C: Export to countries outside the EU must, regardless of the year of the item's production, always procure a CITES re-export permit from the Danish Nature Agency if the item is included in the Washington Convention, Appendix 1 and 2. This export permit can usually be

obtained without problems, if the item is either sold with a CITES certificate or was made prior to 1947. Appendix 2 items usually also receive a re-export permit without problems. Any fees charged by the Danish authorities in connection with the issuance of a re-export permit will be added to the buyer's invoice.

D: In connection with export to other countries outside the EU, special rules may apply concerning the subsequent import, and the buyer is encouraged to consult the relevant local authorities about this issue.

15 DEFECTS IN THE PURCHASED ITEMS

- 15.1 The lack of conformity rules of the Danish Sale of Goods Act may apply. Below is a non-exhaustive excerpt of the buyer's remedies in regard to lack of conformity.
- 15.2 The buyer is entitled to cancel a purchase if the description contained significant errors that have led to a higher hammer price than a correct description would have resulted in. In such cases, the total purchase price will be refunded. The buyer cannot demand payment of interest on the purchase price or demand payment of any other expenses or losses.
- 15.3 A purchase cannot be cancelled and the buyer cannot demand a refund of the purchase price or raise any other claims against BRK if the description of the item is in compliance with paragraph 15.2. The same applies if evidence of forgery has required the use of scientific methods that were either not available at the time of sale, were excessively costly to use or led to the damage of the item in question.
- 15.4 Claims for a cancellation of a purchase must be notified to BRK when the buyer has discovered the fact that entitles the buyer to cancel the purchase. This notice, however, has to be given no later than two years after the final pick-up date according to paragraph 12.4. The item purchased must be returned to BRK in the same condition as it was on the day it was sold at auction. If these conditions are not met, the buyer loses the right to cancel the purchase and cannot claim a refund of the purchase price. The buyer is responsible for paying the costs associated with the return of the item.

16 OBJECTIONS & LIMITATIONS OF LIABILITY

- 16.1 BRK is aware that errors, technical difficulties and external abuse or disruptive influences may occur during the auction. Bidders cannot raise any claims against BRK as a result of such events.
- 16.2 The buyer is always responsible for the correct payment of VAT and other costs, fees etc. in accordance with Danish and foreign regulations.
- 16.3 Unless otherwise stated in these conditions of purchase, BRK may never be held liable for bidders'/buyers' operating loss, loss of profits, other indirect losses or consequential loss.

17 PRIVACY POLICY

- 17.1 It is important to BRK to ensure confidentiality and security regarding the bidder's/buyer's personal information. The privacy policy can be found on bruun-rasmussen.dk.

18 COMPLAINTS, DISPUTE RESOLUTION AND APPLICABLE LAW

- 18.1 BRK can always be contacted if the bidder/buyer has a complaint.
- 18.2 If the dispute cannot be resolved, the consumer can submit a complaint to the Complaint Resolution Centre, Nævnenes Hus, Toldboden 2, 8800 Viborg, Denmark, email: naevneshus.dk. Consumers residing in another EU country than Denmark can submit their complaint to the European Commission's Online Dispute Resolution platform via the website: <http://ec.europa.eu/odr>.
- 18.3 In Denmark, disputes must be brought before the City Court of Copenhagen, but see paragraphs 18.2. The mandatory rules on jurisdiction apply to consumer interests.

Bruun Rasmussen Auctioneers

The above is an English translation of the Danish version of the Conditions of Purchase. In case of a dispute, only the Danish version of the present Conditions of Purchase of Bruun Rasmussen is valid.

ADDRESSES

BRUUN RASMUSSEN AUCTIONEERS

LYNGBY

NØRGAARDSVEJ 3, 2800 KONGENS LYNGBY
+45 8818 1111 / info@bruun-rasmussen.dk

GLOSTRUP

PAUL BERGSØES VEJ 20B, DK-2600 GLOSTRUP
+45 8818 1111 / info@bruun-rasmussen.dk

AARHUS

SØREN FRICHS VEJ 34D, DK-8230 ÅBYHØJ
+45 8818 1111 / aarhus@bruun-rasmussen.dk

JYLLAND AND FYN

PETER BECK
+45 8818 1186 / pb@bruun-rasmussen.dk

NICK MESSMANN
+45 8818 1232 / nic@bruun-rasmussen.dk

ESBEN SKOV JENSEN
+45 8818 1199 / ej@bruun-rasmussen.dk

REPRESENTATIVES

FRANCE AND BELGIUM

DITTE HERBORG KROGH · PARIS
+33 6 6185 4564 / dhk@bruun-rasmussen.dk

SOUTHERN FRANCE AND LUXEMBOURG

PETER KOCH
+45 4045 3403 / p.koch@bruun-rasmussen.dk

GERMANY

NICK MESSMANN
+45 8818 1232 / nic@bruun-rasmussen.dk

CONTACT DIRECTLY

KONTAKT DIREKTE

ADMINISTRATION

Jakob Dupont, CEO +45 8818 1081
dupont@bruun-rasmussen.dk

CUSTOMER SERVICE

kundeservice@bruun-rasmussen.dk +45 8818 1010
customerservice@bruun-rasmussen.dk +45 8818 1010

COMMISSIONS

Lise Winther Wobido +45 8818 1013
Anja Bering Hansen +45 8818 1028
bids@bruun-rasmussen.dk

CATALOGUE REQUESTS

Kundeservice / Customer service +45 8818 1111

AUCTION GUIDANCE

Franziska Kampmann +45 8818 1026
fka@bruun-rasmussen.dk

SHIPPING

shipping@bruun-rasmussen.dk +45 8818 1055

VALUATION AND INFORMATION

VALUATION AT YOUR HOME

Henrik Schleppegrell +45 8818 1145
hsc@bruun-rasmussen.dk

Liselotte Toxværd Møller +45 8818 1234
ltm@bruun-rasmussen.dk

DECORATIVE ART, FURNITURE AND CARPETS

Ralph Lexner +45 8818 1161
rl@bruun-rasmussen.dk

BOOKS

Sarah Kirpekar-Sauer +45 8818 1217
books@bruun-rasmussen.dk

CARPETS

Henrik Schleppegrell +45 8818 1145
hsc@bruun-rasmussen.dk

FURNITURE

Anders Fredsted +45 8818 1142
afr@bruun-rasmussen.dk

PORCELAIN

Line Hjorth Langkjær +45 8818 1166
lla@bruun-rasmussen.dk

SILVER

Martin Hans Borg +45 8818 1128
mhb@bruun-rasmussen.dk

ASIAN ART AND ANTIQUITIES

Alexandra Nilsson +45 8818 1164
ani@bruun-rasmussen.dk

RUSSIAN ART

Martin Hans Borg +45 8818 1128
mhb@bruun-rasmussen.dk

19TH CENTURY AND OLD MASTER PAINTINGS

Julie Arendse Voss +45 8818 1123
jav@bruun-rasmussen.dk

Birte Stokholm +45 8818 1122
bst@bruun-rasmussen.dk

Søren Kjerk Holmstrup +45 8818 11 27
skh@bruun-rasmussen

Sofie Normann Christensen +45 8818 11 25
snc@bruun-rasmussen

MODERN AND CONTEMPORARY ART

Niels Boe-Hauggaard +45 8818 1182
nbh@bruun-rasmussen.dk

Niels Raben +45 8818 1181
nr@bruun-rasmussen.dk

MODERN DESIGN

Peter Kjelgaard Jensen +45 8818 1191
pkj@bruun-rasmussen.dk

Anna Widenborg +45 8818 1187
awi@bruun-rasmussen.dk

MODERN DECORATIVE ART

Amalie Hansen +45 8818 1194
amh@bruun-rasmussen.dk

THE ART OF LUXURY

Daniel Foldschack +45 8818 1174
dfo@bruun-rasmussen.dk

FASHION

Emma Marie Huus-Thomsen +45 8818 1179
eht@bruun-rasmussen.dk

JEWELLERY

Eva Dybkjær +45 8818 1227
evd@bruun-rasmussen.dk

Rie Kertsch Dalager +45 8818 11 75
rkd@bruun-rasmussen

WRISTWATCHES

Frederik Plum +45 8818 1168
fp@bruun-rasmussen.dk

WINE

Thomas Rosendahl Andersen +45 8818 1206
tra@bruun-rasmussen.dk

COINS

Michael Märcher +45 8818 1202
mm@bruun-rasmussen.dk

STAMPS

Preben Raahauge +45 8818 1211
pr@bruun-rasmussen.dk

ARMS, ARMOUR AND SPORTING GUNS

Ralph Lexner +45 8818 1161
rl@bruun-rasmussen.dk

COMMISSION BIDS

KOMMISSIONSBUD

It is possible to leave commission bids if you can not be present at the auction yourself. This service is free of charge.

When leaving a commission bid, you are instructing our customer service to bid up to a specified amount on your behalf.

The situation can occur that another buyer has already bid the same as you were prepared to. Are you then willing to bid further? If not the lot will be sold to another buyer.

If you do not wish to exceed your bid then write "Max", for maximum, next to the amount. You can also allow us to raise your bid by approx. 15% or approx. 25%.

The hammer price may be higher or lower than the estimated price, so it is possible to buy below the estimate. Bruun Rasmussen will always buy at the lowest price possible, as if you yourself had been present at the auction.

All commission bids are strictly confidential.

Commission bids must be submitted no later than **24 hours** prior to the start of the auction.

HOW TO MAKE A COMMISSION BID:

Complete the commission form with all pertinent information.

Indicate the lot number.

Indicate the amount you are prepared to bid.

Should this amount be the absolute maximum, please write "Max" in the appropriate column.

You can also allow us to bid by up to approx. 15% or approx. 25% more by indicating so.

Sign the commission form and make sure that Bruun Rasmussen receives it **24 hours** prior to the start of the auction.

If the information should be insufficient, Bruun Rasmussen can abstain from bidding. Bruun Rasmussen can not be held responsible for error in bidding or failure to execute bids.

INTERNET:

Commission bids can be submitted via website bruun-rasmussen.dk directly from the page with the item you want to submit a bid for.

Deadline for submissions of bids via the website is **3 hours** prior to the start of the auction.

Submitted bids are shown under "Your bids" when you are logged in. Please contact technical support on +45 8818 1114 for questions about the registration and submission of bids on the website.

For additional information, please consult "Conditions of Purchase" §1.

TELEPHONE BIDDING:

Should you wish to bid at auction by telephone, please inform Bruun Rasmussen of your name and telephone number, as well as which catalogue numbers you are interested in, no later than **3 hours** prior to the start of the auction. You will then be contacted shortly before the relevant lot comes under the hammer, thereby allowing you to participate without being in the auction room yourself.

For additional information, please consult "Conditions of Purchase" §1.

Det er muligt at afgive kommissionsbud, hvis De ikke selv kan være til stede på auktionens dag. Denne service er gratis.

Når De afgiver en kommission, beder De vores kundeservice på Deres vegne byde op til et af Dem bestemt beløb i hammerslag.

Der kan opstå den situation, at en anden køber allerede har budt det beløb, som De ønsker at afgive. Er De da villig til at gå et bud højere eller er De indforstået med at nummeret sælges til anden side?

Ønsker De ikke at byde højere så skriv "Max" ud for beløbet. Er De i tvivl om hvor højt De vil byde, kan De hæve budet med op til ca. 15% eller ca. 25%.

Salgsprisen kan blive højere eller lavere end vurderingen, så der er også mulighed for at købe til under den angivne vurdering. Vor kundeservice køber altid så billigt som muligt til Dem, som havde De selv været tilstede på auktionen.

Alle kommissioner behandles strengt fortroligt.

Kommissionsbud skal være Bruun Rasmussen i hænde senest **24 timer** før auktionens start.

SÅDAN BYDER DE:

Udfyld blanketten kommissionsbud med alle oplysninger.

Angiv katalognummer.

Angiv beløbet De ønsker at byde.

Er dette Deres absolutte maximum bedes De anføre "Max" i kolonnen.

De kan også forhøje Deres bud med henholdsvis ca. 15% eller ca. 25%, ved at indikere dette i kolonnen.

De bedes underskrive kommissionsblanketten og sikre Dem, at Bruun Rasmussen modtager den senest **24 timer** før auktionens start.

Hvis Deres oplysninger ikke er tilstrækkelige, kan Bruun Rasmussen undlade at byde for Dem, ligesom Bruun Rasmussen ikke kan gøres ansvarlig for fejl ved budgivning.

INTERNET:

Kommissionsbud kan afgives på hjemmesiden bruun-rasmussen.dk direkte fra siden med den effekt, De ønsker at byde på.

Seneste afgivelse af bud via hjemmesiden er **3 timer** før auktionens start.

Afgivne bud kan ses på hjemmesiden under "Deres bud", når de er logget ind. Kontakt teknisk support på 8818 1114 for spørgsmål om registrering og budgivning via internettet.

For yderligere information, se "Købskonditioner", §1.

TELEFONBUD:

Såfremt De ønsker at byde pr. telefon, bedes De oplyse Bruun Rasmussen Deres navn og telefonnummer samt hvilke katalognumre, De ønsker at byde på, senest **3 timer** før auktionens start. De vil så blive ringet op kort før, den aktuelle vare kommer under hammeren, og De kan på denne måde deltage i auktionen uden selv at være til stede.

For yderligere information, se "Købskonditioner" på bruun-rasmussen.dk under "Guide".

COMMISSION BIDS

KOMMISSIONSBUD

Skal være Bruun Rasmussen i hænde senest **24 timer** før auktionens start.

Must be submitted no later than 24 hours prior to the start of the auction.

AUKTION NR *AUCTION NO:* **917**

Navn *Name:* *

Adresse *Address:* *

Postnr./by *City:* *

Land *Country:* * Fax:

Tel: *

e-mail: CVR-nr. *VAT No.:*

Bank: Konto nr. *Acct. No.:*

Adresse *Address:*

Postnr./By *City:* Land *Country:*

Tel: Kontaktperson *Contact:*

Obligatoriske felter er mærket med en stjerne * *Mandatory fields are marked with an asterisk **

Undertegnede giver hermed fuldmagt til Bruun Rasmussen Kunstauktioner A/S om på mine vegne at købe nedennævnte katalognumre så fordelagtigt som muligt, inden for det af mig anførte beløb, i hammerslag. *I hereby request that Bruun Rasmussen bid on my behalf on the following lots up at the prices indicated below.*

Undertegnede har udfyldt ovennævnte med de ønskede oplysninger, samt har accepteret købskonditionerne. *The undersigned has supplied the required information and agrees to be bound by the conditions of purchase.*

Signatur: * B.R. kunde-nr. *Client No.:*

Jeg ønsker at modtage salgsresultater på de emner jeg har budt på via email dagligt efter auktion
 I wish to receive sales results on the items I have been bidding on via e-mail *every day* *after the auction*

på e-mail adressen *on this e-mail address:*

Katalog nr. Lot. No.	Beskrivelse Description	Bud kr. Bid DKK	Max	+15%	+25%

BRUUN RASMUSSEN KUNSTAUKTIONER A/S

Norgaardsvej 3 · DK-2800 Kongens Lyngby · Tel +45 8818 1111 · bids@bruun-rasmussen.dk · bruun-rasmussen.dk





THE ART OF LUXURY

