

# THE ART OF LUXURY



**BRUUN RASMUSSEN**  
PART OF THE BONHAMS NETWORK

# THE ART OF LUXURY



## TRADITIONEL AUKTION 915

Tirsdag 19. september kl. 16

## EFTERSYN

Torsdag 14. september kl. 15 - 18

Fredag 15. september kl. 10 - 17

Lørdag 16. september kl. 10 - 16

Søndag 17. september kl. 11 - 16

eller efter aftale



**BRUUN RASMUSSEN**

**KUNSTAUKTIONER**

Bredgade 33 · 1260 København K · Tlf. +45 8818 1111  
info@bruun-rasmussen.dk · bruun-rasmussen.dk



## BLIV KLOGERE PÅ KUNSTEN!

Paneldebat: Lørdag 16. september kl. 11-12

### ”Nyt lys på skagensmalerne”

*Et stærkt hold af kunstfaglige profiler sætter nye perspektiver på kunstnerkolonien og dens betydning for dansk kunst. Omdrejningspunktet er Marie Krøyer og Anna Ancher.*

Paneldeltagere:

Museumsdirektør Gertrud Oelsner fra Den Hirschsprungske Samling,  
museumsinspektør Mette Bøgh Jensen fra Skagens Kunstmuseer,  
kritiker og forfatter Lilian Munk Rösing  
og kunstekspert Julie Arendse Voss fra Bruun Rasmussen

Moderator:

Kunsthistoriker og kulturformidler Peter Kær.



Gallery Talk: Søndag 17. september kl. 14-14.30

### ”Gerda Wegener – Blikkets magt”

*Kunstekspert Kathrine Eriksen fortæller om Gerda Wegeners kunst med udgangspunkt i en stor dansk privatsamling.*

*Den gribende fortælling om kunstnerægtesparret er efterhånden alment kendt, godt hjulpet på vej af Hollywood-filmen ”The Danish Girl”.*

*I sjældne tilfælde overgår virkeligheden dog fiktionen.*

*Den sande historie om Gerda Wegener og Einar Wegener/Lili Elbe handler ikke alene om kærlighed og kunst,*

*men også om styrke og mod, og deres skæbne foregriber mange moderne køns- og seksualpolitiske problemstillinger.*

## AUKTIONSKALENDER

---

Mandag	18. september - Fine Art	
	kl. 18 Malerier og tegninger	1 - 76
	kl. 20 Nordisk lys - kunstnerkolonien på Skagen	101 - 149
Tirsdag	19. september - Antiques	
	kl. 14 Kunsthåndværk, møbler og tæpper	150 - 251
Tirsdag	19. september - The Art of Luxury	
	kl. 16 Smykker	252 - 380
	Tasker	381 - 403
	kl. 19 Armbåndsure	404 - 446
Onsdag	20. september - Modern Art	
	kl. 18 Malerier og skulpturer	
	Grafik	
Torsdag	21. september - Design	
	kl. 16 Kunsthåndværk	
	Møbler, lamper og tæpper	
	kl. 20 Netauktion på bruun-rasmussen.dk - Bourgogne	

### VIGTIG INFORMATION VEDR. BUDGIVNING!

Bonhams' internationale kunder kan også byde med på Bruun Rasmussens aktuelle Traditionelle Auktion via Bonhams' hjemmeside: [bonhams.com](http://bonhams.com)

### SIDSTE FRIST FOR AFHENTNING: ONSDAG DEN 4. OKTOBER

Genstande købt på denne auktion skal være betalt senest otte dage efter fakturadatoen og afhentet i Bredgade 33 senest onsdag den 4. oktober. I modsat fald bliver de transporteret til Bruun Rasmussens lager på Paul Bergsøes Vej 16 i Glostrup for købers regning og risiko, hvor de kan afhentes fra fredag den 6. oktober. Transporten koster 150 kr. pr. genstand inkl. moms, og opbevaringen koster 150 kr. pr. genstand pr. påbegyndt uge inkl. moms.



THE ART OF LUXURY



LIVE AUCTION 915

Tuesday 19 September 4 pm

PREVIEW

Thursday 14 September 3 pm - 6 pm

Friday 15 September 10 am - 5 pm

Saturday 16 September 10 am - 4 pm

Sunday 17 September 11 am - 4 pm

or by appointment

 **BRUUN RASMUSSEN**  
AUCTIONEERS

Bredgade 33 · DK-1260 Copenhagen K · Tel +45 8818 1111  
info@bruun-rasmussen.dk · bruun-rasmussen.com





## DAYS OF SALE

<b>Monday</b>	<b>18 September - Fine Art</b>		
	6 pm	Paintings and drawings	1 - 76
	8 pm	Northern Light - the Artists' Colony at Skagen	101 - 149
<b>Tuesday</b>	<b>19 September - Antiques</b>		
	2 pm	Decorative art, furniture and carpets	150 - 251
<b>Tuesday</b>	<b>19 September - The Art of Luxury</b>		
	4 pm	Jewellery	252 - 380
		Handbags	381 - 403
	7 pm	Wristwatches	404 - 446
<b>Wednesday</b>	<b>20 September - Modern Art</b>		
	6 pm	Paintings and sculptures	
		Prints	
<b>Thursday</b>	<b>21 September - Design</b>		
	4 pm	Decorative art	
		Furniture, lamps and carpets	
	8 pm	Online Auction at <a href="http://bruun-rasmussen.dk">bruun-rasmussen.dk</a> - Bourgogne	

### IMPORTANT INFORMATION ABOUT BIDDING AT THE AUCTION

Bonhams' international customers can also bid at Bruun Rasmussen's current Live Auction via Bonhams' website: [bonhams.com](http://bonhams.com)

### DEADLINE FOR CLAIMING ITEMS: WEDNESDAY 4 OCTOBER

*Items bought at this auction must be paid no later than eight days from the date of the invoice and claimed at Bredgade 33 by Wednesday 4 October at the latest. Otherwise, they will be moved to Bruun Rasmussen's storage facility at Paul Bergsøes Vej 16 in Glostrup at the buyer's expense and risk. Here, they can be picked up from Friday 6 October. This transportation will cost DKK 150 per item VAT included, and storage will cost DKK 150 per item per week VAT included.*



## Velkommen til den sidste auktion i Bredgade!

Hos Bruun Rasmussen går tradition og fornyelse hånd i hånd, og nu er det blevet tid til, at vi holder den allersidste auktion i Bredgade. Bygningen har dannet ramme om vores Traditionelle Auktioner siden grundlæggelsen af Bruun Rasmussen i 1948, og her i de historiske lokaler har nogle af de mest imponerende kunstværker og samlinger gennem tiden været under hammeren. Vi ved, at det bliver et vemodigt farvel for vores kære kunder, der er kommet i auktionshuset i årtier – og for os, der som en del af Bruun Rasmussens stab har haft fornøjelsen af at følge auktionerne på nært hold år efter år. For mange er lige netop dette sted i hjertet af København forbundet med eventyrlige rejser ind i kunstens verden under eftersynene og magien under de ofte heftige budkrige i den smukke, gamle auktionssal.

Vores virksomhed er midt i en rivende udvikling, og fornyelsen er en del af vores DNA. Som en vigtig spiller på det internationale auktionmarked er det afgørende for os at følge med tiden. Vi har længe været på udkig efter et nyt domicil, hvor vi kan samle vores auktioner, fagområder og ekspertise under ét og samme tag i københavnsområdet. Det har vi fundet på Nørgaardsvej 3 i Lyngby i en stor, moderne bygning med højt til loftet, der skaber det rette rum for udfoldelse og giver os mulighed for nye aktiviteter. Derfor har vi valgt at sige farvel til Bredgade, men vi tager naturligvis ånden og kulturen herfra med til Lyngby. Vores mål er til stadighed at være tilgængelige, udbyde den mest eftertragtede kunst, dele ud af vores viden og formidle de gode fortællinger, der er knyttet til de mange genstande, som vi hver dag har mellem hænderne. Vi ønsker at give enhver besøgende de bedste oplevelser i vores nye levende auktions- og kulturhus og glæder os til at åbne dørene i Lyngby i begyndelsen af oktober til spændende udstillinger, foredrag og et brag af en åbningsfest.

Forinden står en anden vigtig begivenhed for døren, nemlig den sidste auktion i Bredgade. Og hvad er mere naturligt end at tage afsked og hylde ånden i Bredgade med nogle af de kunstnere, der har været vores faste gæster gennem 75 år? Det gælder selvfølgelig de malere, der i slutningen af 1800-tallet samlede sig på Danmarks nordligste punkt og dannede den berømte kunstnerkoloni. Auktionens mange skagensværker er samlet i særkataloget ”Nordisk lys – kunstnerkolonien på Skagen“. I alt har vi til auktionen udgivet fem auktionsskataloger, og i nærværende katalog hylder vi ”The Art of Luxury“ med et enestående udvalg af funklende diamantsmykker, verdens mest eftertragtede armbåndsure og fashionable og ikoniske tasker fra Chanel, Hermès og Dior. Til vores nye luksuskategori hører også vin, og samlere inden for dette område kan glæde sig til Netauktionen den 21. september kl. 20 på [bruun-rasmussen.dk](http://bruun-rasmussen.dk), hvor flagskibene fra Bourgogne står i kø – heriblandt to flasker Bonnes Mares 1990 Grand Cru fra Domaine Georges Roumier.

Vi glæder os til at se dig en sidste gang i Bredgade – og byde velkommen i Lyngby til oktober!

Jakob Dupont, administrerende direktør og Kasper Nielsen, vurderings- og salgsdirektør

## Welcome to the Last Auction at Bredgade!

At Bruun Rasmussen, tradition and renewal go hand in hand, and the time has now come for us to hold the last auction in the premises at Bredgade. The building has provided the setting for our Live Auctions since the founding of Bruun Rasmussen in 1948, and some of the most impressive works of art and collections have gone under the hammer in these historic premises over the years. We know that it will be a wistful farewell for our dear customers who have been coming to the auction house for decades – as it will be for those of us who have had the pleasure of following the auctions closely, year after year, as members of Bruun Rasmussen’s staff. For many people, this venue in the heart of Copenhagen will forever be associated with adventurous forays into the world of art during the previews and the magical atmosphere that arises during the often fierce bidding wars in the beautiful, old auction room.

Our company is in the midst of a rapid development, and renewal is part of our DNA. As a major player in the international auction market, it is crucial for us to keep up with the times. We have long been on the lookout for new premises in the Copenhagen area where we can gather our auctions, specialist fields and expertise under one roof. And we have found this at Nørgaardsvej 3 in Lyngby, in a large, modern building with high ceilings, which gives us the space we need to spread our wings, and paves the way for new activities. So, we have chosen to say goodbye to Bredgade, but it goes without saying that we will be taking the spirit and culture with us to Lyngby. Our goal is to always be accessible, to offer the most sought-after art, to share our knowledge and to tell the great stories behind the multitude of items that we hold in our hands every day. It is our wish to give every visitor the best of experiences in our vibrant, new auction and culture house, and we look forward to opening the doors in Lyngby for exciting exhibitions, talks and a grand opening party at the beginning of October.

However, another important event is coming up before that – the last auction at Bredgade! And what better way to say goodbye and pay tribute to the spirit of Bredgade than with some of the artists who have been our regular guests for 75 years? We are, of course, referring to the painters who, at the end of the 19th century, settled at Denmark’s northernmost point and formed the famous artist colony. The many Skagen works up for auction are gathered in the special catalogue “Northern Light – The Artists’ Colony at Skagen”. We have published five auction catalogues for the auction, and in this catalogue we celebrate “The Art of Luxury” with a unique selection of sparkling diamond jewellery, the world’s most sought-after wristwatches and fashionable and iconic bags from Chanel, Hermès and Dior. Our new luxury category also features wine, and collectors of the grape can look forward to the Online Auction ([bruun-rasmussen.dk](http://bruun-rasmussen.dk)) at 8 pm on 21 September, with one Bourgogne flagship after another – including two bottles of Bonnes Mares 1990 Grand Cru from Domaine Georges Roumier.

We look forward to seeing you at Bredgade one last time – and welcoming you to Lyngby in October!

Jakob Dupont, CEO and Kasper Nielsen, Director of Valuation and Sales



SPECIALISTS IN JEWELLERY,  
FASHION, WATCHES AND WINE



*Jewellery*

Majbrit Haastrup Nielsen  
+45 8818 1178  
mhn@bruun-rasmussen.dk



*Wristwatches*

Frederik Plum  
+45 8818 1168  
fp@bruun-rasmussen.dk



*Jewellery*

Helle H. Rud  
+45 8818 1177  
hhr@bruun-rasmussen.dk



*Head of Department of Wine*

Thomas Rosendahl Andersen  
+45 8818 1206  
tra@bruun-rasmussen.dk



*Jewellery*

Eva Dybkjær  
+45 8818 1227  
evd@bruun-rasmussen.dk



*Wine*

Thomas Løbner-Olesen  
+45 8818 1241  
tlo@bruun-rasmussen.dk



*Handbags and Fashion*

Emma Marie Huus-Thomsen  
+45 8818 1179  
eht@bruun-rasmussen.dk



*Director of Valuation and Sales*

Kasper Nielsen  
+45 8818 1121  
kn@bruun-rasmussen.dk



*Global Head of Jewellery - Bonhams*

Jean Ghika  
+44 20 7468 8282  
jean.ghika@bonhams.com



*Shipping*

Tina Bavnbek Jepsen  
+45 8818 1056  
tbj@bruun-rasmussen.dk



*Global Head of Watches - Bonhams*

Jonathan Darracott  
+44 20 7447 7412  
jonathan.darracott@bonhams.com



*Representative France + Belgium*

Ditte Herborg Krogh  
+33 6 6185 4564  
dhk@bruun-rasmussen.dk



*Senior International Director - Wine - Bonhams*

Richard Harvey  
+44 20 7468 5811  
richard.harvey@bonhams.com

JEWELLERY

Tuesday 19 September 4 pm

Lot 252 - 380







252

**OLE LYNGGAARD**

A "Flower" diamond jewellery set comprising a small clasp and a pair of ear studs respectively set with one and two brilliant-cut diamonds weighing a total of app. 0.12 ct., mounted in 14k gold and white gold, a five-strand necklace of 14k gold and a necklace set with numerous beads of polished aquamarine. Colour: Wesselton (H). Clarity: VS. Clasp and ear studs diam. app. 1.5 cm. L. necklaces app. 45 and 52 cm. Designed by Charlotte Lynggaard. (5) Accompanied by original case.

DKK 10,000–15,000 / € 1,350–2,000

253

**OLE LYNGGAARD**

An "Anemone" necklace of 14k gold and white gold set with links in the shape of flowers, hearts and butterflies. L. app. 40 cm. Designed by Charlotte Lynggaard.

Accompanied by original case and two extra links.

DKK 10,000–15,000 / € 1,350–2,000

254

**OLE LYNGGAARD**

A "Star" diamond clasp set with a brilliant-cut diamond weighing app. 0.07 ct., mounted in 14k gold and white gold. Colour: Wesselton (H). Clarity: VS. L. app. 3.5 x 4.0 cm.

Accompanied by original case.

DKK 10,000–15,000 / € 1,350–2,000

255<sup>ARR</sup>

**OLE LYNGGAARD**

b. 1936

A "Mega" bracelet of 14k gold with a clasp of 14k gold with satin finish. Weight app. 56.5 g. L. 18.5 cm. (2)

DKK 15,000–20,000 / € 2,000–2,700



252

253



254



255





**256**  
**GEORG JENSEN**

b. Rådvaad 1866, d. Hellerup 1935

A necklace of 18k gold. Design no. 306. L. app. 38 cm. Georg Jensen 1915-1927.

*Accompanied by original case.*

*Bracelet of same design no. is depicted p. 176 in Janet Drucker "A tradition of Splendid Silver".*

*DKK 20,000-25,000 / € 2,700-3,350*

**257**<sup>ARR</sup>  
**ARJE GRIEGST**

A diamond pendant set with a rough diamond, mounted in 18k gold on a twisted leather cord. L. pendant 3.6 cm. L. app. 44.5 cm. Circa 1985.

*Rough diamond app. 4.8 x 5.3 mm.*

*DKK 30,000-40,000 / € 4,050-5,350*

**258**  
**ARJE GRIEGST**

b. København 1938, d. 2016

A "Spiral" bangle of partly gilded sterling silver bangle. Signed Griegst 925. Diam. app. 4 x 6 cm.

*DKK 10,000-12,000 / € 1,350-1,600*

**259**<sup>ARR</sup>  
**BENT & HELGA EXNER**

A diamond ring set with seven brilliant-cut diamonds weighing a total of app. 0.95 ct., mounted in 18k gold and palladium. Colour: Wesselton (H). Clarity: VS-P. Size app. 58. 1970s.

*Accompanied by original case.*

*DKK 10,000-15,000 / € 1,350-2,000*

**260**  
**EVALD NIELSEN**

A bracelet of 14k gold. Weight app. 68 g. L. app. 19.5 cm.

*DKK 12,000-15,000 / € 1,600-2,000*





**261**

A diamond necklace set with a heart-shaped brilliant-cut diamond weighing app. 5.20 ct. flanked by four brilliant-cut diamonds, mounted in 18k white gold. Colour: Top Cape (K-L). Clarity: SI2. L. 44.5 cm. (2)  
 DKK 250,000–300,000 / € 33,500–40,500

**262**

A pair of diamond solitaire ear studs each set with a heart-shaped brilliant-cut diamond weighing a total of app. 2.10 ct., mounted in 18k white gold and gold. Colour: Top Wesselton-Wesselton (G-H). Clarity: SI2-P. L. app. 7 x 7 mm. (2)  
 DKK 60,000–80,000 / € 8,050–10,500

**263**

A diamond ring set with a heart-shaped brilliant-cut natural fancy yellow diamond weighing app. 1.00 ct. encircled by numerous brilliant-cut diamonds weighing a total of app. 0.95 ct., mounted in 18k gold and white gold. Colour: River (E). Clarity: VVS-P. App. size 53.5.  
 Center stone accompanied by GIA report no. 7328418272. DKK 30,000–35,000 / € 4,050–4,700

**264**

A diamond solitaire ring set with a brilliant-cut diamond weighing app. 1.30 ct., mounted in 14k white gold. Colour: Top Cape (K). Clarity: SI2. Size 52.  
 DKK 30,000–35,000 / € 4,050–4,700

**265**

A ruby and diamond ring set with a cushion-cut natural Burma ruby weighing app. 0.71 ct. encircled by numerous brilliant-cut diamonds weighing a total of app. 0.32 ct., mounted in 18k white gold. Colour: River (D). Clarity: VVS. Size app. 53.5.  
 Accompanied by GRS certificate no. GRS2018-011941 stating, "No indication of thermal treatment", Color: Vivid Red (GRS type 'Pigeon's blood') and "Burma (Mogok, Myanmar)" as origin.  
 DKK 25,000–30,000 / € 3,350–4,050



261



262



263



264



265





**266**

A pair of pearl and diamond ear pendants each set with a cultured pearl, three marquise-cut, five baguette-cut and numerous brilliant-cut diamonds weighing a total of app. 1.47 ct., mounted in 14k white gold. Colour: Top Wesselton (F). Clarity: VS. Pearl diam. app. 6.5 mm. L. 5.9 cm. (2)

*DKK 15,000–20,000 / € 2,000–2,700*

**267 \***

A pair of diamond ear pendants each set with numerous brilliant-cut diamonds weighing a total of app. 2.88 ct., mounted in 14k white gold. L. 5.7 cm. (2)

*DKK 20,000–30,000 / € 2,700–4,050*

**268**

A sapphire and diamond ring set with a cabochon sapphire weighing app. 3.27 ct. encircled by numerous brilliant-cut diamonds weighing a total of app. 0.38 ct., mounted in 18k white gold. Size 53.

*DKK 12,000–15,000 / € 1,600–2,000*

**269**

A sapphire and diamond ring in Art Deco style set with an old mine-cut diamond weighing app. 3.01 ct. encircled by numerous fancy-cut sapphires, mounted in platinum. Colour: Top Crystal (I). Clarity: VVS. Size 56.5. London 1999, England.

*Accompanied by case and receipt.*

*DKK 80,000–100,000 / € 10,500–13,500*

**270**

An Art Deco diamond ring set with an old-cut diamond weighing app. 2.03 ct. encircled by numerous single-cut diamonds, mounted in platinum. Colour: Crystal (J). Clarity: SI. Size 50. Circa 1920's.

*Center stone graded.*

*DKK 25,000–30,000 / € 3,350–4,050*

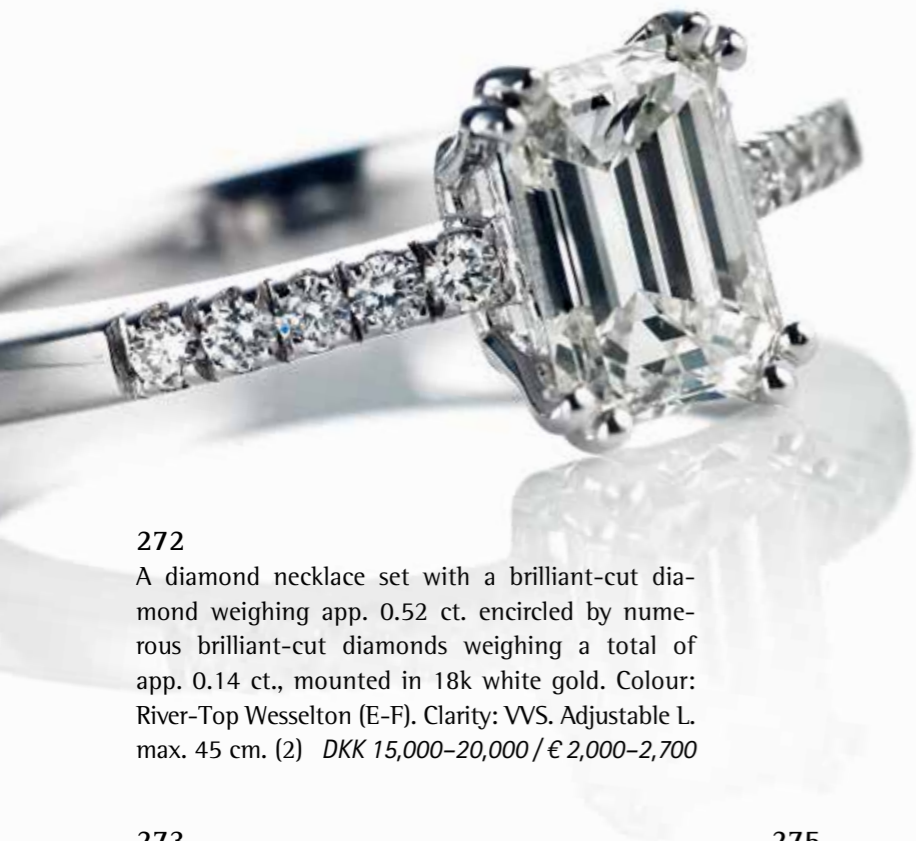
**271**

A diamond bracelet in Art Deco style set with numerous brilliant-cut diamonds weighing a total of app. 3.67 ct., mounted in 18k white gold. Colour: Top Wesselton-Wesselton (G-H). Clarity: VS2-SI. L. 17 cm.

*Accompanied by certificate and box.*

*DKK 25,000–30,000 / € 3,350–4,050*





**272**

A diamond necklace set with a brilliant-cut diamond weighing app. 0.52 ct. encircled by numerous brilliant-cut diamonds weighing a total of app. 0.14 ct., mounted in 18k white gold. Colour: River-Top Wesselton (E-F). Clarity: VVS. Adjustable L. max. 45 cm. (2) *DKK 15,000–20,000 / € 2,000–2,700*

**273**

A sapphire and diamond ring set with an oval-cut sapphire weighing app. 3.60 ct. encircled by six marquise-cut and six brilliant-cut diamonds weighing a total of app. 1.20 ct., mounted in 18k white gold. Colour: Top Wesselton-Wesselton (G-H). Clarity: VS-SI. Size 52.

*DKK 40,000–50,000 / € 5,350–6,700*

**274**

A full diamond eternity ring set with numerous emerald-cut diamonds weighing a total of app. 9.00 ct., mounted in 14k white gold. Colour: Top Wesselton (F-G). Clarity: VVS. App. size 50.

*Accompanied by insurance valuation by Ruben Svart of DKK 385,000. 2023.*

*DKK 80,000–100,000 / € 10,500–13,500*

**275**

A diamond ring set with an emerald-cut diamond weighing app. 1.15 ct. flanked by numerous brilliant-cut diamonds weighing a total of app. 0.15 ct., mounted in 18k white gold. Colour: Wesselton (H). Clarity: SI-P. Size 54.5.

*DKK 35,000–40,000 / € 4,700–5,350*

**276**

A diamond bracelet set with numerous brilliant-cut diamonds weighing a total of app. 4.84 ct., mounted in 18k white gold and a pendant set with a heart-shaped brilliant-cut diamond weighing app. 0.20 ct., mounted in 18k white gold. Colour: Wesselton (H). Clarity: VS. L. 18.2 cm. 2007.

*Accompanied by certificate.*

*DKK 40,000–50,000 / € 5,350–6,700*







**277**

A Belle Époque diamond pendant set with a marquise-cut diamond weighing app. 1.40 ct. encircled by numerous single and rose-cut diamonds, mounted in 14k gold, silver and platinum. Colour: Cape (N). Clarity: SI. L. app. 39 cm. Circa 1900.

*Center stone graded.*

*DKK 10,000–15,000 / € 1,350–2,000*

**278**

An Edwardian diamond necklace set with an old brilliant-cut and two old-cut diamonds weighing a total of app. 1.70 ct., mounted in platinum and 14k and 18k white gold. Colour: Crystal-Top Cape (J-K). Clarity: P. L. app. 42 and 51 cm. Circa 1900-1910.

*Accompanied by insurance valuation DKK 105,000 from 1993.*

*DKK 18,000–20,000 / € 2,400–2,700*

**279**

A Victorian diamond necklace set with black enamel and numerous old-cut diamonds weighing a total of app. 2.70 ct., mounted in 8k gold and silver and necklace of 18k gold. Colour: Wesselton-Crystal (H-J). Clarity: SI. L. app. 41.5 cm. Circa 1860-70s. (2)

*Accompanied by case.*

*DKK 10,000–15,000 / € 1,350–2,000*

**280**

A diamond brooch in the shape of a star set with numerous old and rose-cut diamonds weighing a total of app. 1.05 ct., mounted in 14k gold. L. app. 3.5 cm. Circa 1900.

*DKK 10,000–12,000 / € 1,350–1,600*

**281**

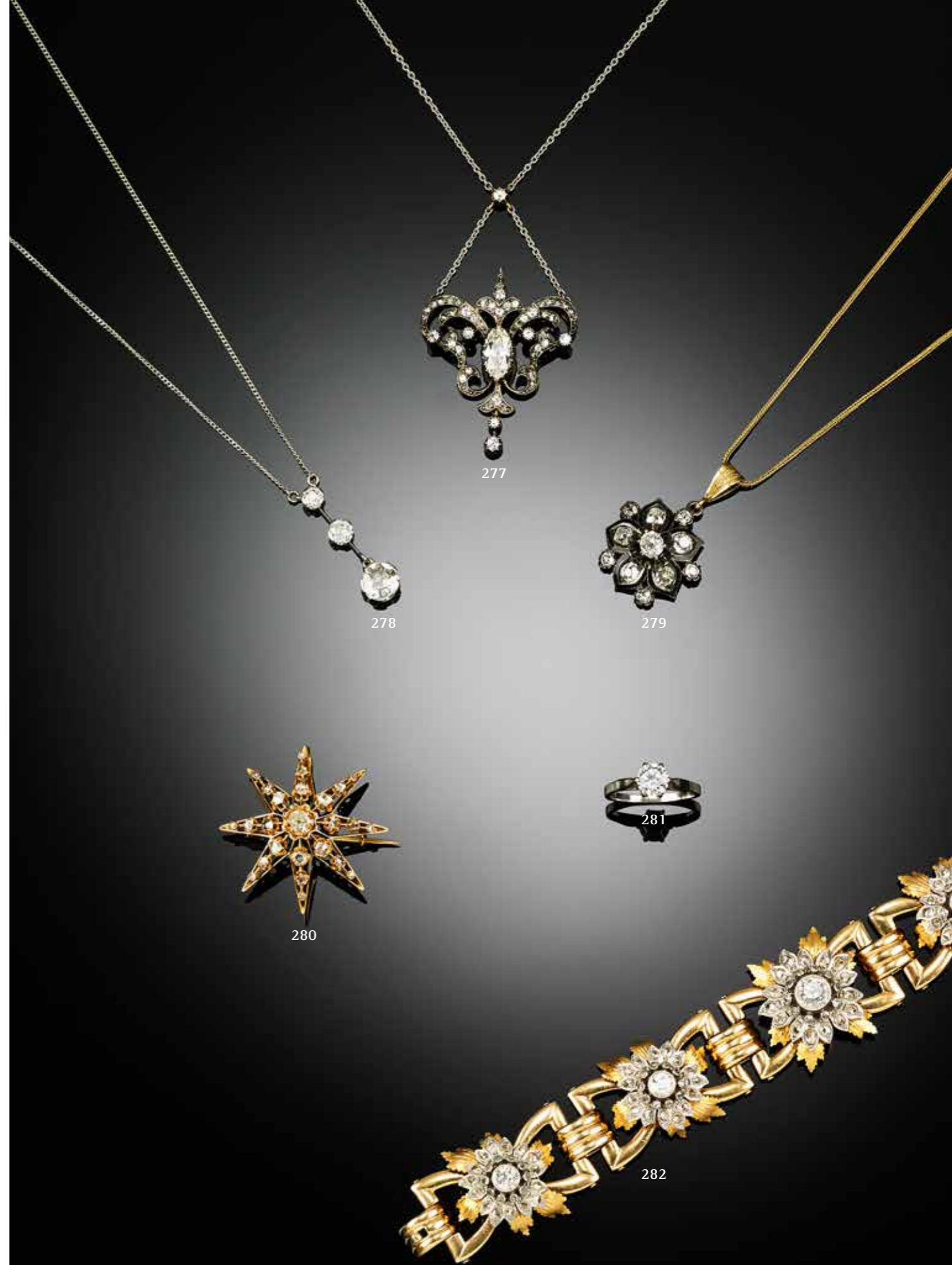
A diamond solitaire ring set with a brilliant-cut diamond weighing app. 0.95 ct., mounted in 14k white gold. Colour: Crystal (J). Clarity: SI2. Size 55.

*DKK 10,000–12,000 / € 1,350–1,600*

**282**

A diamond bracelet in shape of five flowers each set with an old-cut diamond weighing a total of app. 3.00 ct. encircled by numerous rose-cut diamonds weighing a total of app. 2.60 ct., mounted in 18k gold and platinum. Colour: Top Crystal-Crystal (I-J). Clarity: SI-P1. L. 18.5 cm. Circa 1930-40.

*DKK 60,000–70,000 / € 8,050–9,400*







**285**  
**CARTIER**  
 An "Ellipse" ruby ring set with an oval-cut ruby, mounted in 18k gold. Signed Cartier. Serial no. 00266. Size 56.  
*Accompanied by original case. DKK 15,000 / € 2,000*

**283 \***  
**POMELLATO**  
 A necklace of 18k gold partly with satin finish. Weight app. 101 g. Adjustable L. max. 65 cm.  
*DKK 35,000 / € 4,700*

**284**  
**CARTIER**  
 A pair of "Hindu Floral" diamond ear studs each set with four brilliant-cut diamonds weighing a total of app. 0.40 ct., mounted in 18k gold. Signed Cartier. Ref. no. C37702. Colour: Top Wesselton (F-G). Clarity: VS. L. app. 9 x 10 mm. 1995. (2)  
*Accompanied by original certificate.*  
*DKK 10,000–15,000 / € 1,350–2,000*

**286**  
**TIFFANY & CO.**  
 A diamond brooch in the shape of a bow set with numerous old European-cut diamonds weighing a total of app. 2.80 ct., mounted in 18k gold. L. app. 4 cm. New York 1896.  
*Accompanied by original case and receipt.*  
*DKK 12,000–15,000 / € 1,600–2,000*

**287**  
**CARTIER**  
 A "Love" bangle of 18k gold. Signed Cartier. Ref. no. GO 2356. Weight app. 32.5 g. Diam. app. 6 cm.  
*Accompanied by original case and a defect screwdriver.*  
*Retail price DKK 62,000.*  
*DKK 25,000–30,000 / € 3,350–4,050*



283



284



285



286



287



**288**

A necklace of 24k gold. Weight app. 219.3 g. L. app. 76 cm.

*Designed by architect MAA Erik Villefrance 1915-1992, architect for the Farø bridge build in 1985. Inspired of elements from the bridge.*

DKK 75,000 / € 10,000

**289**

A diamond ring comprising four rings each set with numerous brilliant-cut diamonds weighing a total of app. 1.21 ct., mounted in 18k gold. Colour: Wesselton (H). Clarity: VS. App. size 54.

DKK 10,000-15,000 / € 1,350-2,000

**290**

A bracelet of 14k gold. Weight app. 71.5 g. L. app. 18.5 cm. Circa 1970s.

*Accompanied by case.*

DKK 20,000-25,000 / € 2,700-3,350

**291**

A bracelet of 14k gold. Weight app. 154.5 g. L. 17.5 cm. 1960-70s.

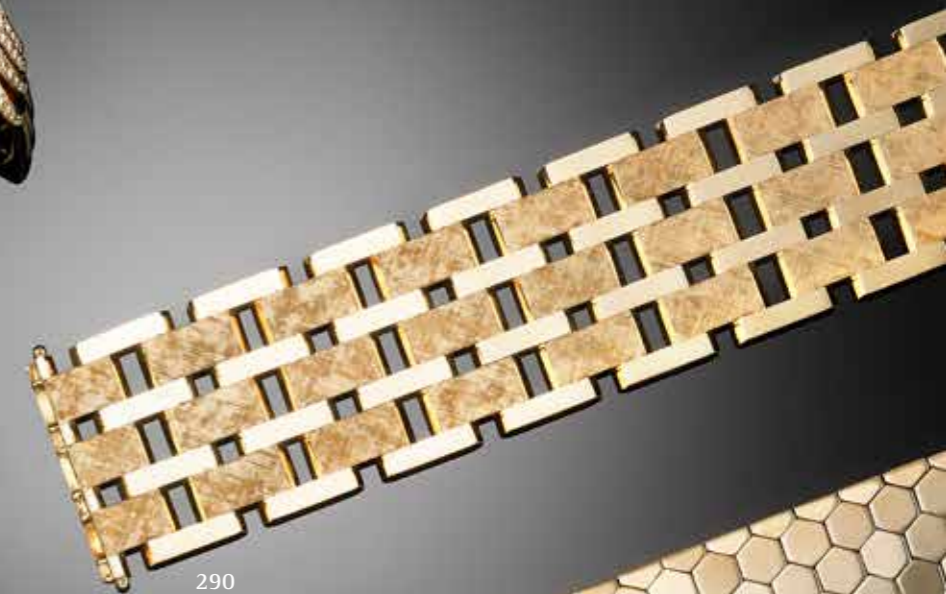
DKK 35,000-40,000 / € 4,700-5,350



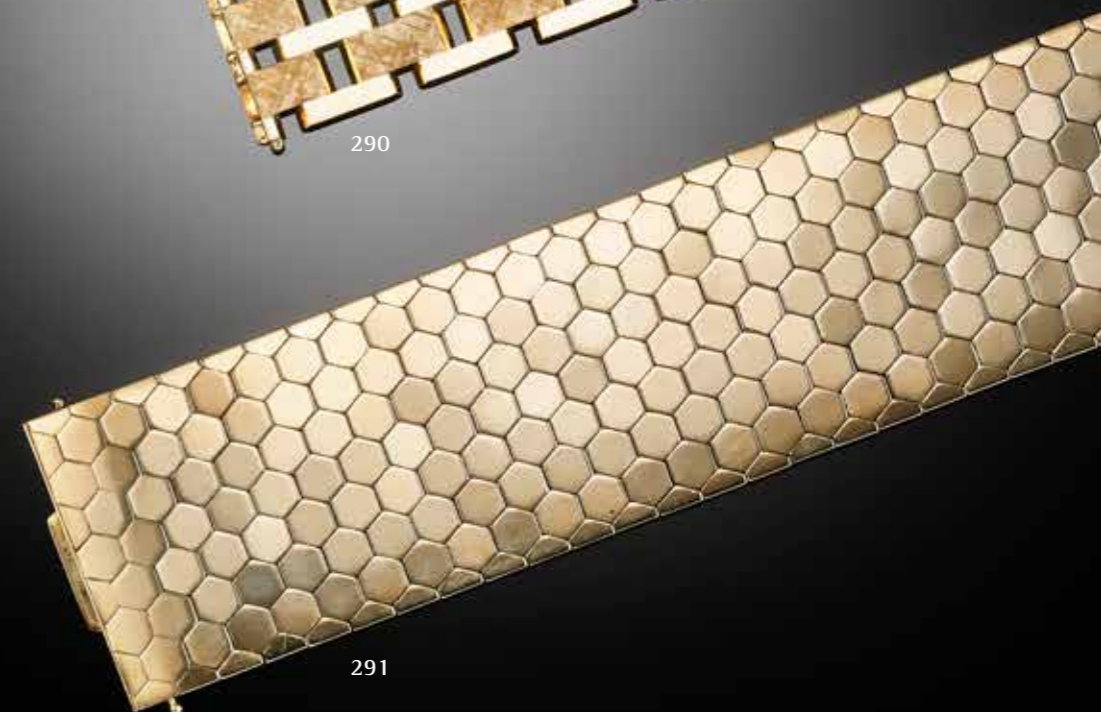
288



289



290



291





292

A graduated diamond necklace set with numerous brilliant-cut diamonds weighing a total of app. 13.73 ct., mounted in 18k white gold. Colour: River (E). Clarity: VVS. L. app. 46 cm.

DKK 120,000–130,000 / € 16,000–17,500

293

A pair of diamond solitaire ear studs each set with an old brilliant-cut diamond weighing a total of app. 7.00 ct., mounted in 14k white gold. Colour: Cape (M). Clarity: VVS-VS. (2)

DKK 250,000–300,000 / € 33,500–40,500

294 \*

A pair of diamond ear pendants each set with numerous brilliant-cut diamonds weighing a total of app. 2.06 ct., mounted in 14k white gold. L. 4 cm. (2)

DKK 20,000–30,000 / € 2,700–4,050

295

A diamond ring set with seven brilliant-cut diamonds weighing a total of app. 1.30 ct., mounted in 18k white gold. Colour: Top Wesselton-Wesselton (G-H). Clarity: VVS-VS. Size 56.

DKK 20,000–25,000 / € 2,700–3,350

296

A diamond ring set with a cushion-cut diamond weighing app. 1.11 ct. flanked by eight princess-cut diamonds weighing a total of app. 0.98 ct., mounted in 18k white gold. Colour: Top Wesselton-Wesselton (G-H). Clarity: VS. Size 52. 2018.

Accompanied by certificate.

DKK 20,000–25,000 / € 2,700–3,350

297

A diamond bracelet set with numerous brilliant-cut diamonds weighing a total of app. 13.67 ct., mounted in 18k white gold. Colour: Top Wesselton-Top Crystal (G-I). Clarity: VS. L. app. 18 cm.

DKK 120,000–130,000 / € 16,000–17,500



292



293



294



295



296



297





**298 \***

A diamond necklace set with numerous brilliant-cut diamonds weighing a total of app. 5.08 ct., mounted in 18k white gold. Colour: Top Wesselton (F-G). Clarity: VS-SI. L. app. 85 cm.

*DKK 30,000–40,000 / € 4,050–5,350*

**299**

A pair of diamond solitaire ear studs each set with a brilliant-cut diamond weighing a total of app. 2.08 ct., mounted in 18k white gold. Colour: Top Cape (K). Clarity: VVS. (2)

*DKK 35,000–40,000 / € 4,700–5,350*

**300 \***

A sapphire and diamond ring set with a circular-cut and numerous marquise-cut sapphires weighing a total of app. 5.06 ct. and numerous brilliant-cut diamonds weighing a total of app. 1.30 ct., mounted in 18k white gold. Colour: Top Crystal-Crystal (I-J). Clarity: VS-SI. Size 54.

*DKK 20,000–25,000 / € 2,700–3,350*

**301**

A sapphire and diamond ring set with an oval-cut sapphire weighing app. 3.84 ct. encircled by numerous brilliant-cut diamonds weighing a total of app. 0.58 ct., mounted in 18k white gold. Colour: Wesselton (H). Clarity: VS. Size 52.

*DKK 40,000–50,000 / € 5,350–6,700*

**302 \***

A diamond bracelet set with eight brilliant-cut diamonds weighing a total of app. 1.76 ct., mounted in 18k white gold. Colour: Top Wesselton-Wesselton (G-H). Clarity: SI. L. app. 17 cm.

*DKK 15,000–20,000 / € 2,000–2,700*



298



299



300



301



302



303

A pair of diamond ear pendants each set with numerous brilliant-cut diamonds weighing a total of app. 1.68 ct., mounted in 18k gold. Colour: Wesselton (H). Clarity: VVS. L. 22 mm. (2)

DKK 18,000–20,000 / € 2,400–2,700

304

A pair of diamond ear studs each set with numerous old mine-cut diamonds weighing a total of app. 2.45 ct., mounted in 18k gold. Colour: Wesselton (H). Clarity: VS. B. 12 mm. (2)

DKK 20,000–25,000 / € 2,700–3,350

305 \*

#### NATASCHA TROLLE

An aquamarine and diamond ring set with a fancy-cut aquamarine weighing app. 0.77 ct. flanked by two fancy-cut yellow diamonds weighing a total of app. 0.20 ct. and six brilliant-cut diamonds weighing a total of app. 0.09 ct., mounted in 18k gold. Size 53.

DKK 10,000–15,000 / € 1,350–2,000

306

A diamond solitaire ring set with a brilliant-cut diamond weighing 2.30 ct., mounted in 18k partly rhodium plated gold. Colour: Cape (M). Clarity: VVS. Size 49.

Accompanied by GIA report no. 2196093576, box and insurance valuation from Dirks.

DKK 80,000–100,000 / € 10,500–13,500

307

A Ceylon sapphire and diamond ring set with an emerald-cut natural Ceylon sapphire weighing app. 9.85 ct. flanked by two shield-cut diamonds weighing a total of app. 0.90 ct., mounted in 18k gold. Colour: Top Cape (K). Clarity: VS. Size 54.

DKK 70,000–80,000 / € 9,400–10,500

308 \*

A diamond bracelet set with numerous brilliant-cut diamonds weighing a total of app. 11.08 ct., mounted in 18k rose gold. Colour: Top Crystal-Top Cape (I-K). Clarity: VS-P1. L. 19 cm.

DKK 80,000–100,000 / € 10,500–13,500

309

A graduated diamond bangle in the shape of a spiral set with numerous brilliant-cut diamonds weighing a total of app. 2.76 ct., mounted in 18k gold. Colour: Top Wesselton (F). Clarity: SI. Flexible diam. app. 4.3 x 5.2–5.1 x 5.9 cm.

DKK 35,000 / € 4,700







310

A turquoise jewellery set comprising a necklace and a pair of ear studs in the shape of leaves each set with numerous cabochon turquoises, mounted in 18k gold. L. app. 42 and 2 cm. (3)

*DKK 15,000–20,000 / € 2,000–2,700*

311

A wide gold bracelet composed of numerous twisted joints of 18k gold. Weight app. 125 g. W. 5.2 cm. L. app. 19 cm.

*DKK 40,000 / € 5,350*

312

A twisted pearl bracelet set with numerous cultured pearls, mounted in 18k gold. Pearl diam. app. 4 mm. L. app. 22 cm. Italy 1960s.

*DKK 20,000–25,000 / € 2,700–3,350*



310



311

312





313

A sapphire and diamond necklace set with a circular-cut orange sapphire weighing app. 0.91 ct. encircled by eight brilliant-cut diamonds weighing a total of app. 0.75 ct., mounted in 18k gold. Colour: Wesselton (H). Clarity: VVS. L. 41, 43.5 and 46 cm.

DKK 10,000–15,000 / € 1,350–2,000

314 \*

A pair of diamond solitaire ear studs each set with a brilliant-cut diamond weighing a total of 1.01 ct., mounted in 18k gold. Colour: Wesselton (H). Clarity: VVS. (2)

Accompanied by IGI parcel paper and a copy of certificate no. 478100760 and 478100769.

DKK 20,000–25,000 / € 2,700–3,350

315

**RUBEN SVART**

A diamond solitaire ring set with a brilliant-cut diamond weighing app. 3.15 ct., mounted in 18k gold. Colour: Top Cape (L). Clarity: VS. App. size 52.

Accompanied by case.

DKK 100,000–120,000 / € 13,500–16,000

316

**HARTMANN'S**

An Argyle diamond ring set with two brilliant-cut natural fancy intense pink Argyle diamonds weighing a total of app. 0.14 ct. and 0.004 ct. and a brilliant-cut white diamond weighing app. 0.70 ct., mounted in 18k rose gold. Colour: Top Wesselton (G). Clarity: VVS-SI. Size 49. 2019.

Accompanied by GIA diamond report no. 6215675150 from 2016 and certificate with insurance valuation at DKK 119,000 from Hartmann's. 2013.

DKK 40,000–50,000 / € 5,350–6,700

317

A diamond bracelet set with numerous brilliant-cut diamonds weighing a total of app. 9.42 ct., mounted in 18k gold. Colour: Wesselton-Crystal (H-J). Clarity: VVS-VS. L. 18 cm.

Cut grade: Triple Excellent-cut. Hearts & Arrows.

DKK 90,000–100,000 / € 12,000–13,500







**318**

A diamond necklace set with a pear-shaped brilliant-cut natural fancy yellow diamond weighing 1.02 ct. encircled by numerous brilliant-cut diamonds weighing a total of app. 0.34 ct., mounted in 18k white gold and gold. Colour: Top Wesselton (F-G). Clarity: VS. L. app. 45 cm.

Accompanied by GIA report no. 6223090465.

DKK 30,000 / € 4,050

**319**

A pair of diamond ear studs each set with seven yellow and brown brilliant-cut diamonds weighing a total of app. 0.27 ct. and numerous brilliant-cut diamonds weighing a total of app. 1.08 ct., mounted in 18k white gold. Colour: River-Top Wesselton (D-F). Clarity: VVS-VS. L. 13.5 mm. (2)

DKK 20,000–25,000 / € 2,700–3,350

**320**

A pair of diamond ear studs each set with a cushion-cut fancy yellow diamond weighing a total of app. 0.62 ct. encircled by numerous brilliant-cut diamonds weighing a total of app. 0.62 ct., mounted in 18k gold and white gold. Colour: River (D). Clarity: VVS-P. L. 15 mm. (2)

DKK 18,000–20,000 / € 2,400–2,700

**321**

A diamond ring set with numerous brilliant-cut diamonds weighing a total of app. 2.96 ct., mounted in 18k gold. Colour: Wesselton (H). Clarity: VVS. App size 54. DKK 25,000–30,000 / € 3,350–4,050

**322**

A diamond ring set with numerous brilliant-cut diamonds weighing a total of app. 3.07 ct., mounted in 18k white gold. Colour: River (D). Clarity: VVS. App. size 53.5. DKK 30,000–35,000 / € 4,050–4,700

**323 \***

A diamond ring set with a cushion-cut fancy yellow diamond weighing app. 2.26 ct. encircled by numerous brilliant-cut diamonds weighing a total of app. 1.01 ct., mounted in 18k white gold and gold. Yellow diamond clarity: VS. Colour: Wesselton (H). Clarity: VS-SI. Size 54.

DKK 70,000–80,000 / € 9,400–10,500





324

A pair of diamond ear pendants each set with a pear-shaped brilliant-cut diamond weighing a total of app. 2.20 ct. and brilliant and baguette-cut diamonds weighing a total of app. 1.40 ct., mounted in platinum. Pear-shaped diamonds: Colour: Top Wesselton-Crystal (G-J). Clarity: VS-SI. L. app. 4.3 cm. (2)  
*DKK 70,000–80,000 / € 9,400–10,500*

325

A diamond brooch set with seven marquise-cut and numerous baguette and brilliant-cut diamonds weighing a total of app. 10.00 ct., mounted in 18k white gold. Colour: Top Wesselton-Wesselton (G-H). Clarity: VVS-VS. L. app. 4.5 x 5.8 cm. Circa 1960-70s.  
*DKK 40,000–50,000 / € 5,350–6,700*

326

An emerald and diamond ring set with an emerald-cut emerald weighing 7.25 ct. encircled by numerous brilliant-cut diamonds weighing a total of app. 1.80 ct., mounted in 18k white gold. Colour: Top Wesselton-Wesselton (G-H). Clarity: SI-P1. Size 55.  
*Accompanied by Cisgem report no. 7195.*  
*DKK 50,000–60,000 / € 6,700–8,050*

327

An emerald and diamond ring set with an emerald-cut emerald weighing app. 10.90 ct. flanked by numerous baguette-cut diamonds weighing a total of app. 0.81 ct., mounted in platinum. Colour: Wesselton-Top Crystal (H-I). Clarity: VS. Size 56.  
*DKK 60,000–70,000 / € 8,050–9,400*

328

An emerald and diamond bracelet set with a fancy-cut, three emerald-cut and three baguette-cut emeralds weighing a total of app. 2.10 ct. encircled by numerous brilliant-cut diamonds weighing a total of app. 2.50 ct., mounted in 18k white gold and gold. Colour: Wesselton-Top Crystal (H-I). Clarity: SI-P1. Diam. app. 6 cm.  
*DKK 25,000–30,000 / € 3,350–4,050*



324



325



326



327



328



329  
CHR. RASMUSSEN

A double strand pearl necklace set with numerous cultured pearls and a clasp set with a cabochon emerald weighing app. 4.30 ct. encircled by numerous brilliant-cut diamonds weighing a total of app. 0.28 ct., mounted in 14k white gold and palladium. Pearl diam. app. 8.2 mm. L. app. 40 cm.

Accompanied by original case.

DKK 10,000–15,000 / € 1,350–2,000

330

An emerald and diamond ring set with a cabochon emerald weighing app. 8.88 ct. encircled by numerous brilliant-cut diamonds weighing a total of app. 0.79 ct., mounted in 18k white gold. Colour: Top Wesselton (F). Clarity: VVS. Size 55.

DKK 40,000–45,000 / € 5,350–6,050

331

A sapphire and diamond ring set with an oval-cut natural sapphire weighing 14.57 ct. encircled by six marquise-cut and numerous trapeze-cut diamonds weighing a total of 2.84 ct., mounted in platinum. Colour: Top Wesselton-Top Crystal (G-I). Clarity: VS-SI. Size 54.

DKK 40,000–50,000 / € 5,350–6,700

332

A ruby and diamond ring set with an oval-cut natural ruby weighing app. 1.20 ct. encircled by numerous brilliant-cut diamonds weighing a total of app. 0.50 ct., mounted in 18k white gold. Size 52.

Accompanied by case.

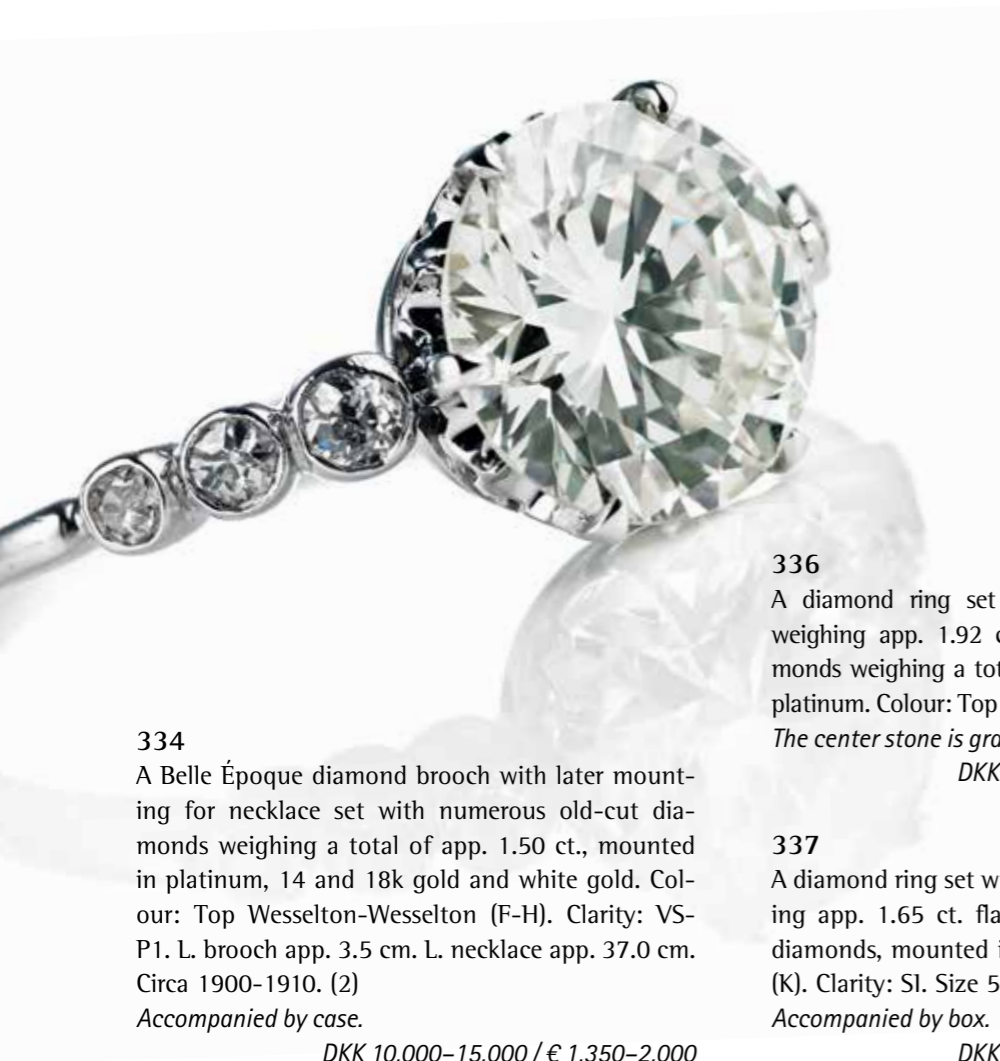
DKK 12,000–15,000 / € 1,600–2,000

333

A "Tutti Frutti" bracelet set with numerous carved sapphires, rubies and emeralds weighing a total of app. 47.60 ct. and numerous brilliant-cut diamonds weighing a total of app. 5.11 ct., mounted in 18k white gold. Colour: Wesselton-Crystal (H-J). Clarity: VS-P. L. 18.5 cm.

DKK 60,000–65,000 / € 8,050–8,700





334

A Belle Époque diamond brooch with later mounting for necklace set with numerous old-cut diamonds weighing a total of app. 1.50 ct., mounted in platinum, 14 and 18k gold and white gold. Colour: Top Wesselton-Wesselton (F-H). Clarity: VS-P1. L. brooch app. 3.5 cm. L. necklace app. 37.0 cm. Circa 1900-1910. (2)

Accompanied by case.

DKK 10,000-15,000 / € 1,350-2,000

335

An Art Deco diamond ring set with numerous old brilliant and single-cut diamonds weighing a total of app. 1.00 ct., mounted in platinum and 18k white gold. Colour: Wesselton-Top Crystal (H-I). Clarity: VS-SI. Size 58. Circa 1920-30.

DKK 10,000-15,000 / € 1,350-2,000

336

A diamond ring set with a brilliant-cut diamond weighing app. 1.92 ct. flanked by six old-cut diamonds weighing a total of app. 0.10 ct., mounted in platinum. Colour: Top Cape (K). Clarity: VVS. Size 53.5. *The center stone is graded.*

DKK 40,000-50,000 / € 5,350-6,700

337

A diamond ring set with an old-cut diamond weighing app. 1.65 ct. flanked by numerous single-cut diamonds, mounted in platinum. Colour: Top Cape (K). Clarity: SI. Size 52.

Accompanied by box.

DKK 10,000-15,000 / € 1,350-2,000

338

A Belle Époque diamond bracelet set with numerous old, single and baguette-cut diamonds weighing a total of app. 5.25 ct., mounted in platinum. Colour: Top Wesselton-Wesselton. (G-H). Clarity: VVS-SI. L. 18.5 cm. Circa 1900-1910.

DKK 20,000-30,000 / € 2,700-4,050



334



335



336



337



338





**339 \***  
 A diamond necklace with a pendant set with a pear-shaped brilliant-cut diamond weighing app. 1.21 ct. encircled by numerous brilliant-cut diamonds weighing a total of app. 0.49 ct., mounted in 18k white gold. Colour: Wesselton-Top Cape (H-K). Clarity: SI-P. L. 45 cm. (2)  
 DKK 40,000–60,000 / € 5,350–8,050

**340 \***  
 A pair of diamond ear pendants each set with a pear-shaped brilliant-cut diamond weighing a total of app. 1.47 ct. encircled by numerous brilliant-cut diamonds weighing a total of app. 1.24 ct., mounted in 18k white gold. Colour: Top Wesselton (F-G). Clarity: SI. L. 4 cm. (2)  
 DKK 50,000–60,000 / € 6,700–8,050

**341 \***  
**DAMIANI**  
 A pair of diamond ear pendants each set with numerous brilliant-cut diamonds weighing a total of app. 0.88 ct., mounted in 18k white gold. Colour: Top Wesselton-Wesselton (G-H). Clarity: VVS. L. app. 5.5 cm. (2) DKK 10,000–12,000 / € 1,350–1,600

**342**  
**SALVINI**  
 A diamond ring set with two fancy-cut and numerous baguette and brilliant-cut diamonds weighing a total of app. 2.50 ct., mounted in 18k white gold. Colour: Top Wesselton-Wesselton (G-H). Clarity: VVS-VS. Size 56.  
 DKK 15,000–20,000 / € 2,000–2,700

**343 \***  
**DAMIANI**  
 A diamond jewellery set comprising a ring set with numerous brilliant-cut diamonds weighing a total of app. 0.27 ct. and a pair of ear pendants each set with numerous brilliant-cut diamonds weighing a total of app. 0.30 ct., mounted in 18k white and rose gold. L. app. 1.5 cm. Size 55. (3)  
 DKK 10,000–12,000 / € 1,350–1,600





**344 \***

A diamond necklace set with numerous brilliant-cut diamonds weighing a total of app. 1.51 ct., mounted in 18k white gold. Colour: Top Wesselton-Wesselton (G-H). Clarity: VS-SI. L. 120 cm.

*The necklace is without clasp.*

*DKK 20,000–30,000 / € 2,700–4,050*

**345**

A pair of tourmaline and diamond ear studs each set with a fancy-cut and four marquise-cut tourmalines weighing a total of app. 1.72 ct. and numerous brilliant-cut diamonds weighing a total of app. 0.76 ct., mounted in 18k white gold. Colour: Wesselton (H). Clarity: VVS. W. 16 mm. (2)

*DKK 12,000–15,000 / € 1,600–2,000*

**346**

A diamond ring set with numerous slightly pinkish brown brilliant-cut diamonds weighing a total of app. 0.22 ct. and numerous brilliant-cut white diamonds weighing a total of app. 0.51 ct., mounted in 18k white gold. Colour: River (D). Clarity: VVS. Size 53.5.

*DKK 12,000–15,000 / € 1,600–2,000*

**347**

A diamond ring in the shape of a flower set with a princess-cut pinkish brown diamond weighing app. 0.12 ct. encircled by numerous brilliant-cut diamonds weighing a total of app. 1.16 ct., mounted in 18k white and rose gold. Colour: Top Wesselton (F). Clarity: VVS. Size 53.5.

*DKK 25,000–30,000 / € 3,350–4,050*

**348 \***

A kunzite, sapphire and diamond ring set with a fancy-cut kunzite weighing app. 4.63 ct. flanked by four emerald-cut sapphires weighing a total of app. 2.08 ct. encircled by numerous brilliant-cut diamonds weighing a total of app. 0.47 ct., mounted in 18k rose and white gold. Colour: Top Wesselton-Wesselton (G-H). Clarity: VS-P. Size 52.

*DKK 15,000–20,000 / € 2,000–2,700*

**349 \***

A diamond bracelet set with numerous brilliant-cut diamonds weighing a total of app. 10.80 ct., mounted in 18k white gold. Colour: Top Crystal-Crystal (I-J). Clarity: VS-P1. L. 18 cm.

*DKK 80,000–100,000 / € 10,500–13,500*



344



345



346



347



348



349





**350**  
A necklace of 18k gold. Weight 117 g. L. app. 40 cm.  
Italy 1980-90s. DKK 35,000-40,000 / € 4,700-5,350

**351**  
A bracelet of 14k gold. Weight app. 54 g. L. app. 21 cm.  
*Accompanied by case.*  
DKK 12,000-15,000 / € 1,600-2,000

**352**  
A bracelet of 18k gold. Weight app. 111 g. L. app. 20 cm. Italy 1960-70s.  
DKK 35,000-40,000 / € 4,700-5,350



350



351



352





353 \*

A pair of ear pendants each set with two cabochon corals encircled by numerous square-cut rubies weighing a total of app. 3.82 ct., black enamel and numerous single-cut diamonds weighing a total of app. 2.71 ct., mounted in sterling silver and 14k gold. L. app. 5.2 cm. (2)

DKK 10,000–15,000 / € 1,350–2,000

354

A ruby and diamond ring set with a brilliant-cut diamond weighing app. 1.07 ct. encircled by numerous circular-cut rubies weighing a total of app. 0.35 ct., mounted in 18k rose gold. Colour: Cape (M). Clarity: Sl. Size 53. DKK 20,000 / € 2,700

355 \*

#### NATASCHA TROLLE

A pair of emerald and diamond ear pendants each set with a pear-shaped, a circular-cut and two square-cut emeralds weighing a total of app. 2.36 ct., an oval-cut yellow diamond and three brilliant-cut diamonds weighing a total of app. 1.44 ct., mounted in 18k gold. L. 4.7 cm. (2)

*The pear-shaped and square-cut emeralds are of Columbian origin. The circular-cut emeralds are of Brazilian origin.* DKK 15,000–20,000 / € 2,000–2,700

356

A tourmaline ring in the shape of a snake set with an oval-cut rubelite tourmaline weighing app. 5.80 ct., mounted in 18k gold. App. size 53.5.

DKK 12,000–15,000 / € 1,600–2,000

357

A diamond bracelet set with numerous brilliant-cut diamonds weighing a total of app. 6.00 ct., mounted in 18k rose gold. Colour: Top Wesselton-Wesselton (G-H). Clarity: P. L. app. 18.5 cm.

*Accompanied by case.*

DKK 20,000–25,000 / € 2,700–3,350

358

An emerald and diamond bracelet set with two marquise-cut and numerous pear-shaped emeralds weighing a total of app. 5.55 ct. and numerous brilliant-cut diamonds weighing a total of app. 1.54 ct., mounted in 18k gold. L. 18 cm.

DKK 35,000–40,000 / € 4,700–5,350



353



355



354



356



357



358





**359**  
A diamond ring set with numerous brilliant-cut diamonds weighing a total of app. 1.00 ct., mounted in 18k white gold. Colour: Top Wesselton (F). Clarity: VVS. Size 52. DKK 15,000–20,000 / € 2,000–2,700

**360**  
A ruby and diamond ring set with a circular-cut ruby weighing app. 0.60 ct. encircled by numerous brilliant-cut diamonds weighing a total of app. 0.46 ct., mounted in 18k white gold. Colour: River-Top Wesselton (D-F). Clarity: VVS. Size 53.5. Cut quality: Triple Excellent-cut. Hearts & Arrows. DKK 10,000–15,000 / € 1,350–2,000

**361**  
A diamond ring set with a square emerald-cut diamond weighing 1.19 ct. encircled by numerous brilliant-cut diamonds, mounted in 18k white gold. Colour: River (D-E). Clarity: VVS-VS. Size 53.5. Accompanied by GIA report no. 1186699688. DKK 70,000–80,000 / € 9,400–10,500

**362**  
A graduated emerald and diamond bracelet set with numerous circular-cut emeralds weighing a total of app. 2.70 ct. flanked by numerous brilliant-cut diamonds weighing a total of app. 8.00 ct., mounted in 18k white gold. Colour: Wesselton (H). Clarity: VVS. L. 18.4 cm. DKK 50,000–55,000 / € 6,700–7,400





363

A Belle Époque pearl and diamond necklace set with numerous old and single-cut diamonds and three cultured freshwater pearls, mounted in platinum. Pendant 8 cm. L. necklace 43 cm. Circa 1900-10. Accompanied by case.

DKK 10,000–15,000 / € 1,350–2,000

364

A Belle Époque diamond necklace set with an old mine-cut diamond weighing app. 0.95 ct. encircled by six rose-cut and numerous old-cut diamonds weighing a total of app. 0.15 ct., mounted in 12k gold and platinum. Colour: Crystal-Top Cape (J-K). Clarity: VS-SI. L. app. 42 cm. Circa 1900-1910. Accompanied by receipt.

DKK 10,000–12,000 / € 1,350–1,600

365

A Belle Époque diamond brooch set with numerous old-cut diamonds weighing a total of app. 2.00 ct., mounted in silver and 14k rhodium plated gold. Colour: Top Crystal-Crystal (I-J). Clarity: SI-P. Diam. app. 3 cm. Circa 1900.

DKK 15,000 / € 2,000

366

An Art Deco ruby and diamond ring set with an oval-cut presumably Burma ruby weighing app. 1.50 ct. encircled by numerous old-cut diamonds weighing a total of app. 1.00 ct. and numerous fancy-cut synthetic rubies, mounted in platinum. Size 51.5.

DKK 35,000–40,000 / € 4,700–5,350

367

A Belle Époque diamond bracelet set with numerous old-cut diamonds, mounted in 12k gold and platinum. Colour: Crystal-Top Cape (J-K). Clarity: SI-P. L. 17 cm. Circa 1910s.

DKK 18,000–20,000 / € 2,400–2,700



363

364

365

366

367





**368**  
A diamond necklace set with numerous brilliant-cut diamonds weighing a total of app. 3.55 ct., mounted in 18k white gold. Colour: Top Wesselton-Wesselton (G-H). Clarity: VVS-VS. L. 39.5 cm.  
DKK 20,000–25,000 / € 2,700–3,350

**369**  
A pair of diamond solitaire ear studs each set with a brilliant-cut diamond weighing a total of 0.87 ct., mounted in 18k white gold. Colour: River (E). Clarity: VVS. (2)  
Accompanied by HRD report no. 230000030571 and 230000031566. DKK 20,000–25,000 / € 2,700–3,350

**370**  
**OLE LYNGGAARD**  
A "Sofia" ring set with an emerald-cut aquamarine, mounted in 18k white gold. App. size 51.  
DKK 15,000–20,000 / € 2,000–2,700

**371**  
**OLE LYNGGAARD**  
A large "Lace" diamond ring set with numerous brilliant-cut diamonds weighing a total of app. 1.65 ct., mounted in 18k white gold. Colour: Top Wesselton (F-G). Clarity: VS. Size 51. Designed by Charlotte Lynggaard.  
Accompanied by original case.  
DKK 25,000–30,000 / € 3,350–4,050

**372**  
A diamond bracelet set with numerous brilliant-cut diamonds weighing a total of app. 7.48 ct., mounted in 18k white gold. Colour: Top Wesselton-Wesselton (G-H). Clarity: VS-P1. L. 17.3 cm.  
DKK 80,000–100,000 / € 10,500–13,500



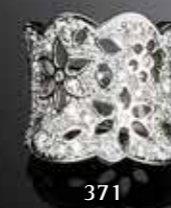
368



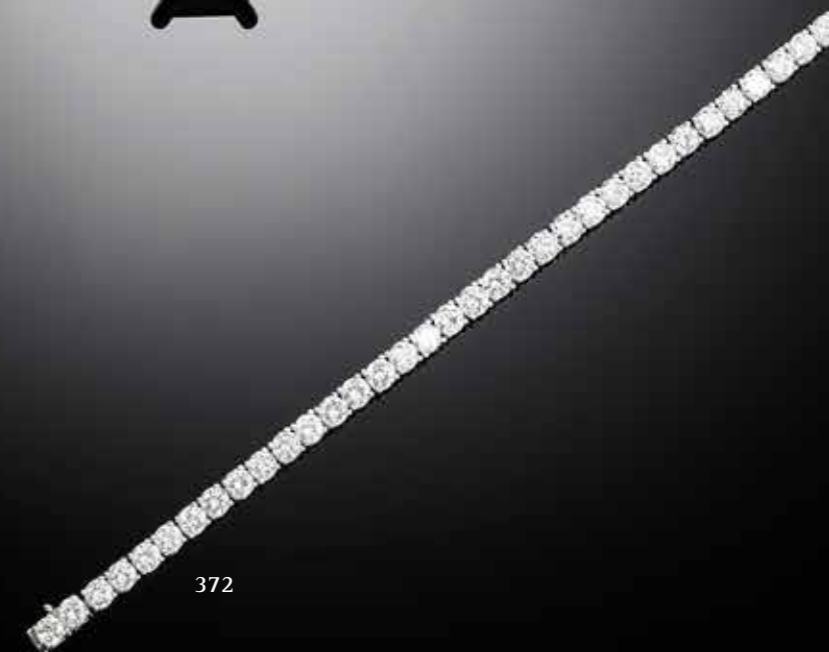
369



370



371



372



**373**  
A ruby and diamond necklace set with three pear-shaped, numerous cabochon, seven circular-cut and three oval-cut rubies weighing a total of app. 25.00 ct. encircled by numerous rose and single-cut diamonds weighing a total of app. 2.70 ct., mounted in 14k gold and silver. L. app. 41 cm. Circa 1860-70s.  
DKK 30,000–35,000 / € 4,050–4,700

**374 \***  
A pair of diamond ear pendants in the shape of a feather each set with numerous single-cut diamonds weighing a total of app. 5.63 ct., mounted in oxidized sterling silver and 14k gold. L. app. 7.8 cm. (2)  
DKK 10,000–15,000 / € 1,350–2,000

**375**  
An "En tremblant" diamond brooch in the shape of a flower branch set with numerous rose-cut diamonds, mounted in 9k gold. Colour: Top Crystal-Top Cape (I-K). Clarity: SI-P. L. app. 10 cm. Circa 1870.  
*Accompanied by case.*  
DKK 30,000–40,000 / € 4,050–5,350

**376**  
A ruby and diamond brooch in the shape of a night butterfly set with circular-cut rubies and numerous rose-cut diamonds, mounted in 18k gold and silver. Weight app. 7 g. L. app. 2.5 cm.  
DKK 10,000–12,000 / € 1,350–1,600

**377**  
**P. HERTZ**  
A ruby and diamond bangle set with five old-cut rubies weighing a total of app. 0.90 ct. flanked by two rose-cut and six old European-cut diamonds weighing a total of app. 1.20 ct., mounted in 14k gold. Diam. app. 5.8 cm. 1897.  
*Accompanied by original case and receipt.*  
DKK 10,000 / € 1,350



373



374



375



376



377





378

A cameo hardstone jewellery set comprising two necklaces, a brooch and a pair of ear pendants each set with carved agate, carnelian, jasper, onyx and lava, mounted in 18k gold. L. app. 42, 36, 5 and 2 cm. Italy, circa 1800-20. (5)

*Accompanied by original case.*

*Provenance: The Danish owner's great-grandfather acquired this cameo parure in Stockholm 1917 from a Russian refugee, who had escaped the Russian revolution. Stone cameos have been made in ancient Greece since 5th century BC, but it was the Napoleonic classicism that brought a renewed interest in cameos. The Italians excelled in the art of cutting cameos and Napoleon brought back some from Italy. As a result the demand for cameos grew, and they became popular souvenirs of the Grand Tour.*

*Cameo jewellery was also made in Russia, e.g. by Duval Frères i St. Petersburg. An example of a gold filigree, diamond and papier-mâché cameo parure is mentioned and reproduced in: Ulla Tillander-Godenhielm, "Jewels from Imperial St. Petersburg", London and St. Petersburg 2012, p. 40. DKK 20,000-25,000 / € 2,700-3,350*

379

**AUGUSTE PEYROULA**

b. 1904, d. 1937

An Art Deco diamond vanity case set with rose-cut diamonds and black enamel, mounted in partly gilded silver. Maker's mark. L. app. 9.0 x 4.5 cm. Paris, circa 1920-30.

*Auguste Peyroula worked for both Cartier and Tiffany.  
DKK 10,000-12,000 / € 1,350-1,600*

380

**AUGUSTE PEYROULA**

An Art Deco diamond vanity case set with rose-cut diamonds, carved jade and black enamel, mounted in partly gilded silver. Maker's mark. Ref. no. 1428. L. app. 8.5 x 4.0 cm. Paris, circa 1920-30.

*Auguste Peyroula worked for both Cartier and Tiffany.  
DKK 10,000-12,000 / € 1,350-1,600*



378



379



380



HANDBAGS

Tuesday 19 September

Lot 381 - 403





381

CHANEL

A "Jumbo Flap Bag" of black quilted lambskin with silver tone hardware, double chain strap, one exterior back pocket, CC turn lock, four interior pockets and burgundy leather lining. H. 20 x W. 30 x D. 10 cm. 2010.

Accompanied by original dust bag, Carte d'authenticité and receipt from 2010.

DKK 40,000-45,000 / € 5,350-6,050



381



382

382

CHANEL

A "Coco Handle" bag of black Caviar leather with silver tone hardware, short handle, chain strap, CC turn lock, one exterior back pocket, two compartments divided by a zipped pocket, four interior pockets and burgundy fabric lining. H. 25 x W. 32 x D. 12 cm. 2016-2017.

Accompanied by original box, dust bag, ribbon, booklet and Carte d'authenticité. DKK 35,000 / € 4,700



383

383

CHANEL

A "Grand Shopping Tote (GST)" of black Caviar leather with silver tone hardware, two handles, one exterior back pocket, two compartments divided by a zipped pocket, two interior pockets and black fabric lining. H. 24 x W. 36 x D. 15 cm. 2008-2009.

Accompanied by original dust bag.

DKK 15,000-18,000 / € 2,000-2,400

384

CHANEL

A "Medallion" bag of black quilted Caviar leather with silver tone hardware, two handles, one exterior back pocket, one zipped compartment with two interior pockets and black leather lining. H. 25 x W. 30 x D. 14 cm. 2000-2002.

DKK 10,000-12,000 / € 1,350-1,600



384





385

**385**  
**HERMÈS**

A "Birkin 35" bag of brown Courchevel leather with gold tone hardware, two handles, three interior pockets and brown leather lining. Accompanied by padlock with keys in clochette. H. 24 x W. 35 x D. 19 cm. 1998.

*Accompanied by original dust bag and dust bag for padlock.*

*DKK 60,000 / € 8,050*

**387 \***

A "Petite Malle" bag of brown monogram canvas with black leather trimmings, gold toned hardware, one compartment with one interior card pocket and beige leather lining. Accompanied by a dark brown Louis Vuitton shoulder strap, that is not original to the bag. H. 13 x W. 20 x D. 5.5 cm. 2018.

*Accompanied by dust bag.*

*Retail price in 2023 DKK 37,000.*

*DKK 10,000 / € 1,350*



387



388

**388**  
**CHANEL**

A "Triple CC Tote" bag of dark brown Caviar leather with gold tone hardware, two handles, two exterior pockets, one zipped compartment with two interior zipped pockets and dark brown leather lining. H. 33 x W. 35 x D. 10 cm. 1994-1996.

*DKK 20,000-25,000 / € 2,700-3,350*

**386**  
**CHANEL**

A "Triple CC Tote" bag of brown Caviar leather with gold tone hardware, two handles, one exterior pocket, one compartment with a magnetic closure, two interior zipped pockets and brown leather lining. H. 32 x W. 32 x D. 8 cm. 1991-1994.

*DKK 20,000-25,000 / € 2,700-3,350*



386

**389**  
**CHANEL**

A "Single Flap" bag of dark brown quilted leather with silver tone hardware, CC turn lock, double chain strap, one exterior back pocket, two interior pockets and dark brown leather lining. H. 21 x W. 31 x D. 9 cm. 2008-2009.

*DKK 30,000 / € 4,050*



389





390

**390  
HERMÈS**

A "Kelly Retourne 32" bag of black Box leather with gold tone hardware, short handle, detachable shoulder strap, one compartment with three interior pockets and black leather lining. Accompanied by padlock with keys in clochette.

H. 23 x W. 32 x D. 12 cm. 1992.  
DKK 50,000 / € 6,700

**392  
HERMÈS**

A "Pascal" bag of black crocodile skin with gold tone hardware, short handle, two compartments, three interior pockets and dark blue leather lining. Accompanied by a mirror and small pouch. H. 20 x W. 26 x D. 7 cm.

*This lot is subject to CITES export/import restrictions and can only be shipped to addresses within the EU or collected from one of our departments. Please contact the department for further details.*

DKK 18,000–20,000 / € 2,400–2,700



392

**391  
HERMÈS**

A "Kelly 32" bag of black crocodile skin with gold tone hardware, short handle, three interior pockets and black leather lining. Accompanied by padlock with keys in clochette. The front straps are not original, as they have been replaced by an independent workshop and not by Hermès. H. 23 x W. 33 x D. 12 cm. App. 1970s.

*Accompanied by a new dust bag. This lot is subject to CITES export/import restrictions and can only be shipped to addresses within the EU or collected from one of our departments. Please contact the department for further details.* DKK 70,000 / € 9,400



391



393

**393  
HERMÈS**

A "Birkin 35" bag of black crocodile skin with silver tone hardware, two handles, two interior pockets and black leather lining. Accompanied by padlock with keys in clochette. H. 24 x W. 35 x D. 18 cm. 2008.

*Accompanied by original box, numerous dust bags, ribbon, two raincoats, receipt from Hermès After Care in 2021, receipt from Vestaire Collective in 2021 and CITES certificate.*

DKK 150,000–200,000 / € 20,000–27,000



394

**394**  
**HERMÈS**

A "Kelly Retourne 28" bag of yellow Courchevel leather with gold tone hardware, short handle, detachable shoulder strap, one compartment with three interior pockets and yellow leather lining. Accompanied by padlock with keys in clochette. H. 23 x W. 28 x D. 12 cm. 1997.

*Accompanied by three original dust bags and Hermès After Care card.*

*DKK 65,000 / € 8,700*

**396**  
**CHANEL**

A flap bag of pink quilted leather with dark silver tone hardware, CC turn lock, detachable chain strap, detachable and adjustable shoulder strap of leather, one exterior back pocket, one compartment with two interior pockets and black fabric lining. H. 16 x W. 23 x D. 6.5 cm. 2015-2016.

*Accompanied by original dust bag and Carte d'authenticité.*

*DKK 20,000-25,000 / € 2,700-3,350*



396

**395**  
**CHANEL**

A "Wallet on a chain" bag of red Caviar leather with silver tone hardware, chain strap, one exterior back pocket, four interior pockets, six card slots and red fabric lining. H. 13 x W. 19 x D. 3 cm. 2014.

*Accompanied by original dust bag.*

*DKK 10,000-12,000 / € 1,350-1,600*



395



397

**397**  
**CHANEL**

A "Medallion" bag of coral coloured Caviar leather with gold tone hardware, two handles, one exterior back pocket, one zipped compartment with two interior pockets and coral coloured leather lining. H. 25 x W. 30 x D. 14 cm. 2003-2004.

*Accompanied by Carte d'authenticité.*

*DKK 12,000 / € 1,600*





398

**398**  
**CHRISTIAN DIOR**  
 A "Lady Dior" bag of dark grey quilted canvas with gold tone hardware, two handles, detachable shoulder strap and one compartment with two interior pockets. H. 20 x W. 24 x D. 12 cm.  
*Accompanied by original dust bag and dust bag for charm.*  
 DKK 18,000–20,000 / € 2,400–2,700

**401**  
**CHRISTIAN DIOR**  
 A bag of black cannage quilted leather with silver tone hardware, two handles, two compartments divided by a zipped compartment with one interior zipped pocket, two interior side pockets and black fabric lining. H. 26 x W. 39 x D. 15 cm.  
*Accompanied by original dust bag, card of authenticity and receipt from 2013.*  
 DKK 10,000–12,000 / € 1,350–1,600



401

**399**  
**CHANEL**  
 A "Wallet on a chain" bag of dark blue Caviar leather with gold tone hardware, chain strap, one exterior back pocket, four interior pockets, six card slots and dark blue fabric lining. H. 13 x W. 19 x D. 3 cm. 2015–2016.  
*Accompanied by original dust bag.*  
 DKK 10,000–12,000 / € 1,350–1,600



399



402

**402**  
**CHANEL**  
 A bag of black quilted leather with silver tone hardware, two chain straps, one zipped compartment with three interior pockets and black satin lining. H. 17 x W. 27 x D. 16 cm. 2006–2008.  
*Accompanied by original dust bag and Carte d'authenticité.*  
 DKK 12,000–15,000 / € 1,600–2,000



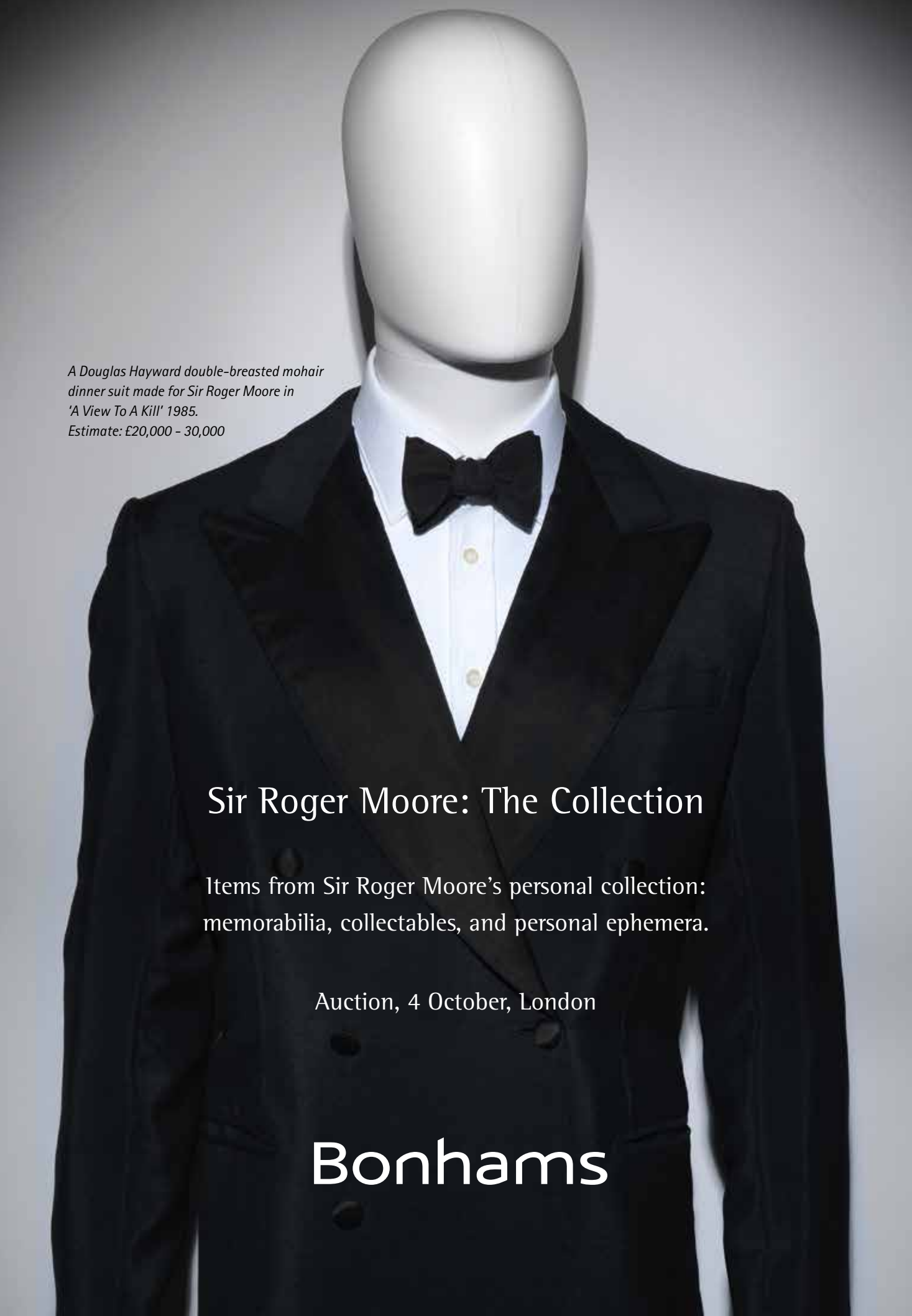
400

**400**  
**CHANEL**  
 A briefcase of black quilted Caviar leather with gold tone hardware, short handle, one exterior back pocket, CC turn lock, two interior pockets and black leather lining. H. 29 x W. 37 x D. 5 cm. 1994–1996.  
*Accompanied by original dust bag.*  
 DKK 25,000 / € 3,350

**403**  
**CHANEL**  
 A "Maxi Flap" bag of black quilted Caviar leather with gold tone hardware, CC turn lock, double chain strap, one exterior back pocket, two interior pockets and black leather lining. H. 22 x W. 31 x D. 9 cm. 1994–1996.  
 DKK 30,000–40,000 / € 4,050–5,350



403



*A Douglas Hayward double-breasted mohair  
dinner suit made for Sir Roger Moore in  
'A View To A Kill' 1985.  
Estimate: £20,000 - 30,000*

## Sir Roger Moore: The Collection

Items from Sir Roger Moore's personal collection:  
memorabilia, collectables, and personal ephemera.

Auction, 4 October, London

# Bonhams



## INDEX

---

### A

Audemars Piguet 419, 430

### B

Breitling 412, 417, 425

### C

Carl F. Bucherer 436

Cartier 284

285, 287, 410

411, 445, 446

Chanel 381, 382

383, 384, 386

388, 389, 395,

396, 397, 399

400, 402, 403

### D

Damiani 341, 343

Dior, Christian 398, 401

### E

Exner, Bent & Helga 259

### G

Griegst, Arje 257, 258

### H

Hartmann's 316

Hermès 385, 390, 391

392, 393, 394

Hertz, P. 377

### I

IWC 415, 442, 444

### J

Jensen, Georg 256

Jürgensen, Urban 422, 423

### L

Linde Werdelin 413

Lynggaard, Ole 252, 253, 254

255, 370, 371

### N

Nielsen, Evald 260

### O

Omega 405, 424

### P

Patek Philippe 407, 418, 431

432, 440, 441

Peyroula, Auguste 379, 380

Piaget 427

Pomellato 283

### R

Rasmussen, Chr. 329

Rolex 404, 409

414, 416, 420

421, 426, 433

434, 435, 437

438, 439, 443

### S

Salvini 342

Svart, Ruben 315

### T

Tiffany & Co. 286

Trolle, Natascha 305, 355

### U

Ulysse Nardin 428

### V

Vacheron Constantin 408

## Bonhams|Cars

Formula 1® icon:

Kimi Räikkönen's famous McLaren Mercedes MP4/21

Estimate: US\$2.5–3.5 million

On The Grid Sale, 25 November, Abu Dhabi



# Bonhams

Disse købsvilkår udgør Bruun Rasmussen Kunstauktioner A/S' ("BRK") købsvilkår for traditionelle auktioner og er gældende fra 1. februar 2017. BRK kan til enhver tid ændre købsvilkårene.

Ved bud accepterer budgiver/køber at være bundet af de til enhver tid gældende købsvilkår, som fremgår på [bruun-rasmussen.dk](http://bruun-rasmussen.dk). Købsvilkårene gælder både i forhold til erhvervsdrivende og forbrugere.

## FØR AUKTIONEN

### 1 VURDERING AF GENSTANDE

1.1 Alle udbudte genstande er vurderet af BRK. Vurderingen er et skøn over det forventede hammerslag, jf. punkt 5.3. Vurderingen er baseret på tidligere salg af samme type genstande og erfaringer hos BRK. Hammerslag kan derfor falde højere eller lavere ud end vurderingen.

### 2 BESKRIVELSE AF GENSTANDE

2.1 Udbudte genstande præsenteres med fotos og beskrivelse i kataloger og på [bruun-rasmussen.dk](http://bruun-rasmussen.dk). Beskrivelsen foretages efter bedste overbevisning af BRK og ud fra en nøje undersøgelse efter den på salgstidspunktet herskende opfattelse blandt eksperter.

2.2 De udbudte genstande er af en alder og art, der bevirker, at de ofte er behæftede med slitage, mangler, beskadigelser og reparationer. Som udgangspunkt sælges alt som brugte genstande, og derfor indeholder beskrivelsen i kataloget og på [bruun-rasmussen.dk](http://bruun-rasmussen.dk) ikke en redegørelse for ovenstående punkter eller genstandens stand.

2.3 I visse tilfælde vælger BRK at beskrive en genstands oprindelse. Det sker, hvis en tidligere ejer er offentlig kendt, og/eller hvis historien om et tidligere ejerskab belyser genstanden og dens art. Omvendt sker det også, at sådanne informationer udelades fra beskrivelsen, f.eks. for at imødekomme sælgers ønske om diskretion.

2.4 Vurderingen og beskrivelsen kan blive revideret forud for auktionen. Ændringer offentliggøres på [bruun-rasmussen.dk](http://bruun-rasmussen.dk)

### 3 EFTERSYN

3.1 Udbudte genstande udstilles op til auktionen i et show-room hos BRK. Potentielle budgivere opfordres til at se genstanden efter i detaljer og har selv ansvaret for at forvise sig om dens stand på disse eftersyn, hvor der også er mulighed for at rådføre sig hos vurderingssagkyndige.

3.2 Hvis en potentiel køber ikke har mulighed for at besigtige genstanden ved selvsyn, kan der i de fleste tilfælde udfærdiges en konditionsrapport. Beskrivelsen heri er foretaget efter BRK's bedste overbevisning, men er ikke baseret på videnskabelige undersøgelser. En konditionsrapport tjener blot som identifikation og er ment som en hjælp til budgivere, der ikke selv har mulighed for at besigtige genstanden på eftersynet.

## UNDER AUKTIONEN

### 4 BRK'S ROLLE

- 4.1 Salget af en genstand formidles af BRK på vegne af sælger. BRK afhænder altid udbudte genstande til den højst mulige pris under budgivningen.
- 4.2 Udbudte genstande kan have en med sælger aftalt mindstepris, hvorunder den ikke kan sælges. Denne pris er fortrolig.
- 4.3 De traditionelle auktioner overværes af en af Justitsministeriet beskikket auktionsleder, der sikrer, at auktionerne går retmæssigt for sig.

### 5 BUDGIVNING

- 5.1 Auktionerne afvikles i danske kroner. De tilnærmelsesvis beløb i euro/US dollar vil blive oplyst på skærme i auktionssalen og i øvrigt på opfordring.
- 5.2 Auktionarius bestemmer overbuds størrelse og i hvilket tempo, auktionen afvikles. Overbud stiger normalt med 5 % - 10 % i forhold til det foregående bud. Normalt sælges der 50-100 katalognumre i timen.
- 5.3 Hammerslag betegner både det forhold, at auktionarius slår med hammeren og derved markerer budgivningens afslutning, og den pris (budsum), den udbudte genstand sælges til. Se punkt 7 vedrørende beløb, der tillægges hammerslaget.
- 5.4 Køber er den budgiver, der opnår hammerslag. Ved hammerslaget indgås på baggrund af disse købsvilkår en bindende købs-/salgsaftale.
- 5.5 Bydes på andres vegne, hæfter budgiver som selvskyldnerkautionist for handlen.
- 5.6 Genstande købes som beset, og køber har uanset budtype ingen fortrydelsesret, heller ikke efter forbrugeraftaleloven.
- 5.7 Budgiver skal efter anvisninger fra BRK identificere sig og dokumentere sin betalingsdygtighed, f.eks. ved registrering af gyldigt betalings-/kreditkort, bankgaranti eller indbetaling af depositum.
- 5.8 BRK kan nægte at acceptere et bud, hvis en tilstrækkelig sikkerhed for betaling mangler, eller hvis budgiver tidligere har misligholdt betalingsforpligtigelser ved køb hos BRK.
- 5.9 Auktionslederen træffer i samråd med auktionarius afgørelse i alle tvivlstilfælde omkring budgivningen.

### 6 BUDTYPER

6.1 Der er følgende muligheder for at afgive bud:

#### PERSONLIGT FREMMØDE:

Registrering og udlevering af bydeskilt foregår ved indgangen til auktionssalen. Når budgiver ønsker at byde, signaleres dette til auktionarius ved at række bydeskiltet i vejret og tydeligt fremvise dets nummer.

#### KOMMISSIONSBUD:

Det ønskede maksimale bud kan afgives via [bruun-rasmussen.dk](http://bruun-rasmussen.dk) frem til auktionens start eller pr. e-mail, fax eller telefon, så budet er modtaget senest 24 timer forud for auktionens start. En kommissionær byder på budgivers vegne inden for rammerne af det ønskede maksimalbud og vil altid afgive lavest muligt overbud.

#### TELEFONBUD:

I forhold til visse genstande er der mulighed for at blive ringet op af en medarbejder fra BRK, der vil byde på budgivers vegne under auktionen. Servicen kan bestilles via [bruun-rasmussen.dk](http://bruun-rasmussen.dk) indtil tre timer før auktionens start.

#### LIVE BIDDING:

Det er muligt at følge auktionen live og byde med via [bruun-rasmussen.dk](http://bruun-rasmussen.dk)

#### FORAUKTION:

Visse traditionelle auktioner indledes med en net-auktion. De højeste bud på net-auktionen danner udgangspunktet på den efterfølgende traditionelle auktion.

## EFTER AUKTIONEN

### 7 BELØB, DER TILLÆGGES HAMMERSLAGET

- 7.1 I tillæg til hammerslaget, jf. punkt 5.3, skal køber for den enkelte genstand betale købersalær og, hvis betingelserne er opfyldt, de øvrige beløb, der er nærmere beskrevet nedenfor. Det samlede beløb, som køber skal betale til BRK, benævnes "købesummen".
  - 7.1.1 Købersalær: Hammerslaget tillægges et salær til BRK. På de traditionelle auktioner udgør salæret 25,6 % af hammerslaget + moms af salæret, i alt 32 %. For frimærker og mønter udgørsalæret 20 % af hammerslaget + moms af salæret, i alt 25 %.
  - 7.1.2 "LIVE bidding": BRK's "LIVE bidding"-software via [bruun-rasmussen.dk](http://bruun-rasmussen.dk) er gratis at benytte for budgivere.
  - 7.1.3 Fuldmoms: Visse genstande handles efter de gældende regler om fuldmoms. Her beregnes der moms på 25 % af både hammerslag og salær. Disse genstande er i beskrivelsen i kataloget og på [bruun-rasmussen.dk](http://bruun-rasmussen.dk) mærket med symbolet "\*" eller med teksten: "Dette emne handles i fuldmoms".
  - 7.1.4 Kunstnerafgift: Ifølge dansk lovgivning om ophavsret skal der opkræves kunstnerafgift (følgeretsvederlag) for værker af nyere danske og visse udenlandske kunstnere, som enten er nulevende eller ikke har været døde i mere end 70 år. Kunstnerafgiften opkræves på vegne af VISDA. Disse værker er i kataloget mærket med "ARR" (Artist's Resale Right) og på [bruun-rasmussen.dk](http://bruun-rasmussen.dk) med teksten "Dette emne er belagt med kunstnerafgift". Kunstnerafgiften tillægges hele hammerslaget + salær (ekskl. moms), når beløbet overstiger 300 euro, som angivet nedenfor:

Hammerslag + salær (ekskl. moms)	Betalingsssats
300,01 - 50.000 euro	5%
50.000,01 - 200.000 euro	3%
200.000,01 - 350.000 euro	1%
350.000,01 - 500.000 euro	0.5%
over 500.000 euro	0.25%

Kunstnerafgiften kan ikke overstige 12.500 euro (ekskl. moms) for den enkelte genstand. Afgiften skal betales i danske kroner, og omregningskursen (EUR/DKK) fastsættes af VISDA.

7.1.5 Betalings-/kreditkortgebyr: BRK forbeholder sig ret til at opkræve de af indløsningselskaberne pålagte betalings-/kreditkortgebyrer. Satserne fremgår ved budgivning via [bruun-rasmussen.dk](http://bruun-rasmussen.dk) og ved betaling.

### 8 BETALINGSFRIST

8.1 Købesummen forfalder til betaling ved hammerslaget, og køber har herefter otte dage til at betale købesummen til BRK.

### 9 BETALINGSMÅDER

9.1 Betaling kan ske på følgende måder:

A: Med betalings-/kreditkort (Dankort, Visa, MasterCard, Maestro, Diners Club, JCB og China UnionPay) eller kontant (op til 19.999 kr.) i auktionssalen eller efterfølgende i en afdeling hos BRK. Bemærk, at vi ikke modtager 500-eurosedler.

B: Med betalings-/kreditkort (Dankort, Visa, MasterCard, Maestro, Diners Club og JCB) på [bruun-rasmussen.dk](http://bruun-rasmussen.dk) under købers personlige side.

C: Via bankoverførsel til BRK's konto i Danske Bank: 4183 4310970638 · Swift/BIC: DABADKDK · IBAN: DK4130004310970638.

## 10 MOMSFRTAGELSE, -BETALING OG -DEPONERING

10.1 Visse købere kan vælge hvilken momstype, der skal være gældende for handlen. Valget skal meddeles BRK senest to hverdage efter købet og kan ikke omgøres.

A: Momsregistrerede virksomheder i Danmark kan vælge, at handlen skal ske efter reglerne om fuldmoms, jf. punkt 7.1.3.

B: Momsregistrerede virksomheder i et andet EU-land kan fritages for dansk moms, når det kan dokumenteres, at genstanden er transporteret til den udenlandske adresse, som køber har oplyst over for BRK, og som er anført på fakturaen. I sådanne tilfælde skal der afregnes moms efter de gældende regler i det land, hvor køber er momsregistreret. Det tilrådes at søge oplysning hos de lokale myndigheder. Køber kan undlade at gøre brug af muligheden for momsfritagelse og i stedet betale dansk brugtmoms/fuldmoms.

C: Købere med bopæl uden for EU kan fritages for dansk moms, når det kan dokumenteres, at genstanden er transporteret ud af EU. BRK udsteder så vidt muligt og mod gebyr de fornødne eksportpapirer, som skal fremvises ved toldmyndighederne. Køber kan undlade at gøre brug af muligheden for momsfritagelse og i stedet betale dansk brugtmoms/fuldmoms.

10.2 Momsregistrerede virksomheder i et andet EU-land og købere med bopæl uden for EU skal deponere den danske moms af fakturabeløbet hos BRK, indtil eksporten er gennemført på dokumenteret lovligt vis. Foretages eksporten af en af BRK godkendt speditor, skal momsens ikke deponeres. Se listen over godkendte speditorer på [bruun-rasmussen.dk](http://bruun-rasmussen.dk)

## 11 OVERSKRIDELSE AF BETALINGSFRIST

11.1 Overskrides en betalingsfrist, herunder fristen i punkt 8, opkræves morarenter, som beregnes efter Nationalbankens officielle udlånsrente + 8 % om året af det skyldige beløb.

11.2 Betales købesummen inkl. renter ikke senest ti dage efter, at der er fremsat påkrav herom, er BRK berettiget til at søge købesummen betalt ved modregning i depositum/ved træk på bankgaranti eller at hæve købet.

11.3 Hæves købet, er BRK berettiget til at sælge genstanden på en ny auktion og kræve omkostningerne og en eventuel difference mellem hammerslag (samt salær), der er opnået på de to auktioner, betalt af den misligholdende køber.

11.4 Alle forfaldne krav (inkl. omkostninger), som ikke betales rettidigt, kan BRK i tillæg til inkasso søge inddrevet på følgende måder:

A: For købers regning sælge genstande indleveret til auktion af eller på vegne af køber. Salget kan gennemføres uden hensyntagen til en aftalt mindstepris. Genstande indleveret til auktion kan ikke kræves udleveret, så længe forfalden gæld henstår ubetalt.

B: Inddrage købers tilgodehavende hos BRK, herunder tilgodehavende fra salg af genstande indleveret af eller på vegne af køber, uanset om et sådant tilgodehavende stammer fra auktionssalg, som ligger forud for eller efter tidspunktet for købers misligholdelse.



## 12 AFHENTNING OG UDLEVERING

- 12.1 Ejendomsretten til en købt genstand overgår til køber, når hele købesummen inkl. eventuelle renter og gebyrer er betalt, og først herefter kan udlevering af genstanden finde sted.
- 12.2 Ved udlevering af en købt genstand forbeholder BRK sig retten til at kræve tilfredsstillende dokumentation for, at den person, som ønsker genstanden udleveret, enten selv er køberen eller er bemyndiget af køberen til at få genstanden udleveret.
- 12.3 Udlevering af visse våben kræver forevisning af gyldig våbentilladelse. Sådant krav er angivet med teksten "Køb af dette emne kræver forevisning af gyldig våbentilladelse" i kataloget og på [bruun-rasmussen.dk](http://bruun-rasmussen.dk)
- 12.4 Købte genstande henligger fra hammerslaget for købers regning og risiko. Afhentning skal ske senest otte hverdage efter sidste auktionsdag.
- 12.5 Foretages afhentningen ikke rettidigt, transporteres de købte genstande til et lager for købers regning og risiko. Transporten koster 150 kr. inkl. moms pr. genstand, og opbevaringen koster 150 kr. inkl. moms pr. genstand pr. påbegyndt uge. Henligger en genstand uafhængt i så lang tid, at lagerlejen overstiger genstandens værdi, er BRK berettiget til for købers regning og risiko og uden hensyn til mindstepris at bortauktionere genstanden eller sælge den underhånden. Køber hæfter til transport og lagerleje, der ikke dækkes ved sådant salg.
- 12.6 I henhold til gældende hvidvasklovgivning skal køber i visse tilfælde udlevere identitetsoplysninger og fremvise billed-id til BRK, før køber kan få den købte genstand i sin besiddelse

## 13 FORSENDELSE

- 13.1 Er køber forhindret i selv at afhente en genstand, tilbyder BRK for købers regning og risiko at emballere og arrangere forsendelse enten med post eller speditør. Se punkt 12.2 angående legitimation.

## 14 EKSPORTTILLADELSE

- 14.1 For at sikre at dansk kulturarv af afgørende betydning forbliver i Danmark, kan Kulturværtdiudvalget for visse genstandes vedkommende nedlægge eksportforbud. Hvis køber ønsker at eksportere en genstand ud af Danmark, hvor der er nedlagt et eksportforbud, annulleres købet, og Kulturværtdiudvalget er forpligtet til at overtage genstanden til den pris, der blev opnået på auktionen. Køber kan ikke rejse krav mod BRK som følge af, at et eksportforbud bliver nedlagt.
- 14.2 Visse genstande er omfattet af Washingtonkonventionen, også kendt som CITES, der har til formål at stoppe ulovlig handel med genstande fremstillet af udryddelsestruede vilde dyr og planter. Såfremt en genstand er omfattet af Washingtonkonventionen, CITES, liste 1, vil det fremgå af beskrivelsen på [bruun-rasmussen.dk](http://bruun-rasmussen.dk) og være markeret med symbolet "©" i kataloget. Følgende regler gør sig gældende:
- A: Genstande omfattet af Washingtonkonventionen, CITES, liste 1, må kun handles, når der foreligger en dispensation i form af et såkaldt CITES-salgscertifikat. BRK indhenter det fornødne certifikat fra Naturstyrelsen, der tillader handel og eksport til lande inden for EU. Dog kan genstande, som er færdigforarbejdet før 1947, frit handles inden for EU uden et certifikat.
- B: Det er alene genstande omfattet af Washingtonkonventionen, CITES, liste 1, som er særskilt markeret på [bruun-rasmussen.dk](http://bruun-rasmussen.dk) og i kataloget. Genstande omfattet af Washingtonkonventionen, CITES, liste 2, der frit kan sælges og transporteres inden for EU, er ikke særskilt markeret.
- C: Ved eksport til lande uden for EU skal der uanset årstallet for genstandens færdigforarbejdning altid indhentes en CITES-reeksporttilladelse fra Naturstyrelsen,

når genstanden er omfattet af Washingtonkonventionen, CITES, liste 1 og 2. Denne eksporttilladelse kan normalt indhentes problemfrit, når liste 1-genstande enten er solgt med et CITES-salgscertifikat eller er færdigforarbejdet før 1947. Liste 2-genstande opnår ligeledes normalt problemfrit en reeksporttilladelse. Eventuelle omkostninger, der opkræves af de danske myndigheder i forbindelse med udstedelse af en reeksporttilladelse, vil blive pålagt købers faktura.

D: I forbindelse med eksport til lande uden for EU kan særlige regler gøre sig gældende ifm. den efterfølgende import, og køber opfordres til at indhente oplysninger fra egne myndigheder.

## 15 MANGLER VED KØBTE GENSTANDE

- 15.1 Købelovens mangelsregler kan finde anvendelse. Nedenfor er angivet et ikke udtømmende uddrag af købers mangelsbeføjelser.
- 15.2 Køber er berettiget til at annullere et køb, hvis beskrivelsen har været behæftet med væsentlige fejl, der har ført til et højere hammerslag, end en korrekt beskrivelse ville have resulteret i. I sådanne tilfælde vil den samlede købesum blive refunderet. Køber kan ikke kræve betaling af renter af købesummen eller kræve dækning af anden udgift eller tab.
- 15.3 Et køb kan ikke annulleres, og køber kan ikke kræve købesummen refunderet eller rejse noget andet krav mod BRK, hvis beskrivelsen af genstanden er i overensstemmelse med punkt 2, eller hvis en påvisning af falskneri havde krævet brug af videnskabelige metoder, der enten ikke var tilgængelige på salgstidspunktet, havde været uforholdsmæssigt omkostningskrævende at anvende eller havde ført til beskadigelse af den pågældende genstand.
- 15.4 Krav om annullering af et køb skal meddeles BRK, når køber er blevet bekendt med det forhold, der berettiger køber til at annullere købet, dog senest to år fra den seneste afhentningsdato efter punkt 12.4. Den købte genstand skal returneres til BRK i samme stand som på hammerslagstidspunktet. Overholdes disse betingelser ikke, mister køber retten til at annullere købet og kan ikke kræve købesummen refunderet. Køber er selv ansvarlig for at betale de omkostninger, der er forbundet med returnering af genstanden.

## 16 INDSIGELSES- OG ANSVARSBEGRÆNSNING

- 16.1 BRK tager forbehold for fejl, tekniske vanskeligheder samt udefrakommende misbrug eller forstyrrende påvirkning under auktionen. Budgetgiver kan ikke rejse noget krav mod BRK som følge heraf.
- 16.2 Køber er i alle tilfælde selv ansvarlig for korrekt betaling af moms og andre afgifter, gebyrer mv. i overensstemmelse med danske og udenlandske regler.
- 16.3 Medmindre andet fremgår af disse købsvilkår, kan BRK aldrig blive ansvarlig for budgetgivers/købers driftstab, avancetab, andre indirekte tab eller følgeskader.

## 17 PERSONDATAPOLITIK

- 17.1 Det er vigtigt for BRK at sikre fortrolighed og sikkerhed omkring budgetgivers/købers personlige oplysninger. Persondatapolitikken fremgår af [bruun-rasmussen.dk](http://bruun-rasmussen.dk).

## 18 KLAGE, TVISTLØSNING OG LOVVALG

- 18.1 Har budgetgiver/køber en klage, kan der altid rettes henvendelse til BRK.
- 18.2 Lykkes det ikke at finde en løsning, kan forbrugere sende en klage til Nævnenes Hus, Toldboden 2, 8800 Viborg, e-mail: [naevneneshus.dk](mailto:naevneneshus.dk). Forbrugere med bopæl i et andet EU-land end Danmark kan klage til EU-Kommissionens online klageportal via hjemmesiden: <http://ec.europa.eu/odr>.
- 18.3 Tvister skal indbringes i Danmark ved Københavns Byret, jf. dog punkt 18.2. I forbrugerforhold gælder de ufravigelige værnetingsregler.

*Bruun Rasmussen Kunstauktioner*

Rev. 06.23

## CONDITIONS OF PURCHASE – LIVE AUCTIONS

These conditions of purchase represent Bruun Rasmussen Kunstauktioner A/S' ("BRK") conditions of purchase for live auctions and are effective from 1 January 2017. BRK may modify the conditions of purchase at any time.

By bidding, the bidder/buyer accepts the current conditions of purchase as they appear on [bruun-rasmussen.dk](http://bruun-rasmussen.dk). The conditions of purchase are applicable to both business owners and consumers.

## BEFORE THE AUCTION

### 1 VALUATION OF ITEMS

- 1.1 All the offered items are valued by BRK. The valuation is an estimate based on the expected hammer price, see paragraph 5.3. The estimate is based on the previous sale of similar items as well as BRK's past experience. The hammer price can therefore be higher or lower than the estimated price.

### 2 DESCRIPTION OF ITEMS

- 2.1 Items up for auction are presented with photographs and descriptions in catalogues and on [bruun-rasmussen.dk](http://bruun-rasmussen.dk). The description is worded according to the best of BRK's knowledge and based on detailed research in accordance with the prevailing views among experts at the time of sale.
- 2.2 The items up for auction are of an age and nature that often mean that they are in a worn, repaired or damaged condition. As a starting point everything is sold as used items. For this reason, the descriptions in the catalogue or at [bruun-rasmussen.dk](http://bruun-rasmussen.dk) do not include a statement regarding the above or the condition of the item.
- 2.3 In some cases, BRK may choose to describe an item's provenance. Such a description is made if a former owner is publicly known and/or if the story of previous ownership sheds further light on the item and its background. In other cases, such information is left out of the description, for instance to meet the seller's wish for privacy.
- 2.4 It is possible that the estimate and description are revised prior to the auction. Changes are published on BRK's website.

### 3 PREVIEW

- 3.1 Items up for auction are presented prior to the auction in one of BRK's showrooms. Potential bidders are encouraged to inspect the items closely and are responsible for determining the condition of the items at these previews, where they also have the opportunity to consult with the valuation experts.
- 3.2 If a potential buyer does not have the opportunity to inspect the item personally, a condition report can be drafted in most cases. The description in this report has been made according to BRK's honest conviction but is not based on scientific studies. A condition report only serves as an identification and is meant as an aid to bidders who do not have the opportunity to inspect the item at the preview.

## DURING THE AUCTION

### 4 THE ROLE OF BRK

- 4.1 The sale of an item is facilitated by BRK on behalf of the seller, and BRK always sells items up for auction at the highest price offered during the bidding round.

- 4.2 Items up for auction can have a reserve price that has been agreed upon with the seller. The price is confidential and the item cannot be sold below this price.
- 4.3 The live auctions are presided over by one of the Danish Ministry of Justice's appointed auctioneers, ensuring that the auctions proceed correctly and lawfully.

## 5 BIDDING

- 5.1 The currency used while the auctions take place is Danish kroner. The approximate amount in euro/US dollars is shown on screens in the saleroom and also on request.
- 5.2 The auctioneer determines the size of the bid increment and the pace of the auction. Bid increments usually rise by 5% - 10% compared to the previous bid. Approximately 50-100 auction lots are sold per hour.
- 5.3 The hammer price refers both to the gavel used by the auctioneer that signifies the end of a bidding round on an item and to the price (bidding amount) that the item up for auction is sold for. See paragraph 7 regarding amounts added to the hammer price.
- 5.4 The buyer is the bidder that submits the highest bid, thereby obtaining the hammer price. At the moment the hammer price is determined, a binding purchase/sale agreement is entered into based on these conditions of purchase.
- 5.5 If bids are made on behalf of others, the bidder serves as surety for the transaction.
- 5.6 Items are purchased in their present state and condition, and regardless of the type of bidding the buyer has no right to cancel his purchase, neither under the Danish Consumer Contracts Act.
- 5.7 Bidders are required, in accordance with BRK's instructions, to identify themselves and document their ability to pay, for instance by registration of a valid debit/credit card, bank guarantee or a deposit.
- 5.8 BRK may refuse to accept a bid if a sufficient guarantee of the bidder's ability to pay is not provided, or if the bidder has previously defaulted on payment obligations on purchases from BRK.
- 5.9 The overseeing auctioneer will, in consultation with the auctioneer at the podium, decide what to do in matters of dispute concerning a bidding round.

## 6 TYPES OF BIDDING

- 6.1 Bidding options:
- IN PERSON:**  
Registration and obtaining the bidding paddle take place at the entrance to the saleroom. When the bidder wishes to bid, it is signalled to the auctioneer on the podium by raising the bidding paddle in the air and clearly displaying its number.
- COMMISSION BIDS:**  
The intended maximum bid can be submitted via [bruun-rasmussen.dk](http://bruun-rasmussen.dk) until the start of the auction or by e-mail, fax or phone, so that the bid is received no later than 24 hours prior to the start of the auction. A commission agent bids on behalf of the bidder within the limits of the stated maximum bid. The commission agent will always bid the lowest possible amount to achieve the hammer price.

### TELEPHONE BID:

With certain items it is possible to have a BRK employee call the bidder over the phone. The employee will then bid on behalf of the bidder during the auction. The service can be booked via [bruun-rasmussen.dk](http://bruun-rasmussen.dk) up until three hours before the auction is set to begin.

## LIVE BIDDING:

It is possible to follow the auction live and bid on the auction lots via [bruun-rasmussen.dk](http://bruun-rasmussen.dk).

## PRE-AUCTION:

Some live auctions are preceded by an online auction. The highest bids from the online auction then represent the starting bids at the following live auction.

## AFTER THE AUCTION

### 7 AMOUNTS ADDED TO THE HAMMER PRICE

- 7.1 In addition to the hammer price, see paragraph 5.3, the buyer pays a buyer's premium for the individual items as well as the other amounts described below if the conditions for these are applicable. The total amount that the buyer pays to BRK is called the "purchase price".
- 7.1.1 Buyer's Premium: The hammer price always includes an additional fee to BRK. At the live auctions, the fee is 25,60% of the hammer price + VAT of the fee, 32% in total. For stamps and coins, the fee is 20% of the hammer price + VAT of the fee, a total of 25%.
- 7.1.2 "LIVE Bidding": BRK's "LIVE Bidding" software is free to use for bidders on [bruun-rasmussen.dk](http://bruun-rasmussen.dk).
- 7.1.3 Full VAT: Certain items are sold at auction in accordance with the current rules regarding full VAT. In such a situation, a VAT of 25% is imposed on both the hammer price and the buyer's premium. These items are marked in the catalogue and on [bruun-rasmussen.dk](http://bruun-rasmussen.dk) with the symbol "\*\*\*", or with the text: "This item is subject to full VAT".
- 7.1.4 Artist's Resale Right: In accordance with Danish copyright law, a royalty fee covering the Artist's Resale Right has to be charged for works by newer Danish artists, and some foreign artists, who are either alive or have not been dead for more than 70 years. The royalty fee covering the Artist's Resale Right is charged on behalf of VISDA (Visual Rights Denmark). These works are marked "ARR" in the printed catalogue, and on [bruun-rasmussen.dk](http://bruun-rasmussen.dk) the description of the works includes the text: "This lot is subject to the Artist's Resale Right". The royalty fee covering the Artist's Resale Right is added to the hammer price + the buyer's premium (excluding VAT) if the amount exceeds EUR 300, as indicated below:

Hammer price + buyer's premium (ex. VAT)	Payment Rate
300,01 - 50,000 euro	5%
50,000,01 - 200,000 euro	3%
200,000,01 - 350,000 euro	1%
350,000,01 - 500,000 euro	0.5%
over 500,000 euro	0.25%

The royalty fee covering the Artist's Resale Right cannot exceed EUR 12,500 (excluding VAT) for each item. The fee must be paid in Danish kroner, and the conversion rate (EUR/DKK) is set by VISDA.

- 7.1.5 Debit/Credit Card Fee: Amounts Added to the Hammer Price: BRK reserves the right to charge the debit/credit card fees imposed by the payment services companies. The rates will appear when bidding on [bruun-rasmussen.dk](http://bruun-rasmussen.dk) and at payment.

### 8 PAYMENT DEADLINE

- 8.1 The purchase price falls due after the hammer price has been determined, and then the buyer has eight days to pay BRK the purchase price.

### 9 PAYMENT METHODS

- 9.1 The payment can be made in the following ways:
- A: With debit/credit card (Visa, MasterCard, Maestro, Diners Club, China UnionPay and JCB) or cash (up to DKK 19.999) in the saleroom or subsequently at one of

BRK's locations. Please note that we do not accept EUR 500 banknotes.

- B: With debit/credit card (Dankort, Visa, MasterCard, Diners Club and JCB) via BRK's website on the buyer's personal page.
- C: By bank transfer into BRK's account with Danske Bank: 4183 4310970638 · Swift/BIC: DABADKKK · IBAN: DK4130004310970638.

### 10 VAT EXEMPTION, PAYMENT & DEPOSIT

- 10.1 Some buyers can choose which type of VAT should apply to the transaction. The choice has to be communicated to BRK no later than two working days after the purchase and cannot be changed subsequently.
- A: Businesses in Denmark registered for VAT can decide that the transaction is to be conducted in accordance with the rules for full VAT, see paragraph 7.1.3.
- B: Businesses registered for VAT in another EU Member State can be exempted from paying Danish VAT if it can be proved that the item has been transported to the foreign address that the buyer has registered with BRK and which is written on the invoice. In such cases, the VAT should be settled according to the rules applicable in the country where the buyer is registered for VAT. It is advisable to consult with the local authorities. The buyer can decide not to be exempt from regular VAT and instead pay Danish VAT on second-hand goods/full VAT.
- C: Buyers residing outside the EU can be exempted from Danish VAT if it can be proved that the item has been transported out of the EU. To the extent possible and for a fee, BRK can issue the necessary export documents for the customs authorities. The buyer may decide not to be exempt from regular VAT and instead pay Danish VAT on second-hand goods/full VAT.
- 10.2 Companies registered for VAT in another EU Member State and buyers residing outside the EU must deposit the Danish VAT on the amount invoiced with BRK until the export process has been completed in a documented, lawful fashion. If the export is undertaken by one of BRK's authorized forwarding agents, the VAT does not have to be deposited. See the list of authorized forwarding agents on [bruun-rasmussen.dk](http://bruun-rasmussen.dk).

### 11 OVERDUE PAYMENTS

- 11.1 If payment is made after a deadline, including the deadline specified in paragraph 8, interest on overdue payments will be charged and estimated in accordance with the Danish Central Bank's official lending rate + 8% per year on the amount due.
- 11.2 If the purchase price, including interest, has still not been paid ten days after the demand for payment has been made, BRK is entitled to seek the purchase price paid by making a set-off against the deposit/by drawing on the bank guarantee or to cancel the purchase.
- 11.3 If the purchase is cancelled, BRK is entitled to sell the item at a new auction and demand the costs and any difference between the new and the earlier hammer price (including the buyer's premium) covered by the defaulting buyer.
- 11.4 In addition to debt collection, BRK may seek recovery of all due claims (including costs) not paid in a timely manner in the following ways:
- A: Making the buyer cover the costs of selling items consigned to auction by or on behalf of the buyer. The sale can be conducted without regard to an agreed reserve price. Items consigned for auction cannot be collected as long as overdue debts are unpaid.
- B: Seizing the buyer's remaining balance with BRK, including the balance from the sale of items consigned by or on behalf of the buyer, regardless of whether such receivables derive from auction sales prior to or after the date of the buyer's default on the payment.

### 12 PICK-UP & COLLECTION

- 12.1 The title to a purchased item passes to the buyer when the full purchase price, including any interest and fees, has been paid, and only then can the collection of an item take place.
- 12.2 In connection with the collection of a purchased item, BRK reserves the right to demand satisfactory documentation that the person who wants to pick up the item is either the buyer himself/herself or authorized by the buyer to receive the item on his/her behalf.
- 12.3 The collection of certain weapons requires presentation of a valid weapons certificate. Items with such requirements are listed with the text: "The purchase of this item requires the presentation of a valid weapons certificate" in the catalogue and on [bruun-rasmussen.dk](http://bruun-rasmussen.dk).
- 12.4 Purchased items are stored after the auction at the buyer's expense and risk. Pick-up must take place no later than eight working days after the last auction day.
- 12.5 If the item(s) is/are not picked up on time, the purchased items will be transported to a warehouse at the buyer's risk and expense. The transport costs are DKK 150 including VAT per item and the storage costs are DKK 150 including VAT per item for each week or part of a week. If an item is left unclaimed for an amount of time that results in the storage costs exceeding the value of the item, BRK will be entitled to, at the buyer's expense and risk and without regard to the reserve price, sell the item at an auction or privately. The buyer is still liable for the costs of transportation and storage not covered by such sale.
- 12.6 In accordance with current anti-money laundering laws, the buyer must in certain cases submit personal information and present a photo ID to BRK before the buyer can have the purchased item placed in his possession.

### 13 SHIPPING

- 13.1 If the buyer is unable to pick up the purchased item, BRK offers to pack and arrange delivery either by mail or by freight forwarder at the buyer's risk and expense. See paragraph 12.2 regarding identification.

### 14 EXPORT LICENSE

- 14.1 To ensure that Danish cultural heritage of vital importance remains in Denmark, the Danish Cultural Assets Commission can place an export ban on certain items. If the buyer wishes to export an item that is subject to an export ban in Denmark, the purchase will be cancelled and the Danish Cultural Assets Commission is obliged to acquire ownership of the item for the price obtained at auction. The buyer cannot raise any claims against BRK as a result of an export ban.
- 14.2 Certain items are included in the Washington Convention, also known as CITES. The purpose of CITES is to stop the trade of items made with endangered species and flora. If the item is included in the Washington Convention, CITES, Appendix 1, this will appear in the description of the item on [bruun-rasmussen.dk](http://bruun-rasmussen.dk) and be marked with the symbol "☉" in the catalogue. The following rules are applicable:
- A: Items that are included in the Washington Convention, CITES, Appendix 1, can only be traded when a dispensation in the form of a CITES certificate has been obtained. BRK obtains the required certificate from the Danish Nature Agency that allows trade and export to countries within the EU. Items that were produced before 1947 can, however, be freely traded within the EU without a certificate.
- B: It is only items included in the Washington Convention, CITES, Appendix 1 that are marked individually on [bruun-rasmussen.dk](http://bruun-rasmussen.dk) and in our catalogue. Items included in the Washington Convention, CITES, Appendix 2, which can be freely sold and transported within the EU, are not individually marked.
- C: Export to countries outside the EU must, regardless of the year of the item's production, always procure a CITES re-export permit from the Danish Nature Agency if the item is included in the Washington Convention, Appendix 1 and 2. This export permit can usually be

obtained without problems, if the item is either sold with a CITES certificate or was made prior to 1947. Appendix 2 items usually also receive a re-export permit without problems. Any fees charged by the Danish authorities in connection with the issuance of a re-export permit will be added to the buyer's invoice.

D: In connection with export to other countries outside the EU, special rules may apply concerning the subsequent import, and the buyer is encouraged to consult the relevant local authorities about this issue.

### 15 DEFECTS IN THE PURCHASED ITEMS

- 15.1 The lack of conformity rules of the Danish Sale of Goods Act may apply. Below is a non-exhaustive excerpt of the buyer's remedies in regard to lack of conformity.
- 15.2 The buyer is entitled to cancel a purchase if the description contained significant errors that have led to a higher hammer price than a correct description would have resulted in. In such cases, the total purchase price will be refunded. The buyer cannot demand payment of interest on the purchase price or demand payment of any other expenses or losses.
- 15.3 A purchase cannot be cancelled and the buyer cannot demand a refund of the purchase price or raise any other claims against BRK if the description of the item is in compliance with paragraph 15.2. The same applies if evidence of forgery has required the use of scientific methods that were either not available at the time of sale, were excessively costly to use or led to the damage of the item in question.
- 15.4 Claims for a cancellation of a purchase must be notified to BRK when the buyer has discovered the fact that entitles the buyer to cancel the purchase. This notice, however, has to be given no later than two years after the final pick-up date according to paragraph 12.4. The item purchased must be returned to BRK in the same condition as it was on the day it was sold at auction. If these conditions are not met, the buyer loses the right to cancel the purchase and cannot claim a refund of the purchase price. The buyer is responsible for paying the costs associated with the return of the item.

### 16 OBJECTIONS & LIMITATIONS OF LIABILITY

- 16.1 BRK is aware that errors, technical difficulties and external abuse or disruptive influences may occur during the auction. Bidders cannot raise any claims against BRK as a result of such events.
- 16.2 The buyer is always responsible for the correct payment of VAT and other costs, fees etc. in accordance with Danish and foreign regulations.
- 16.3 Unless otherwise stated in these conditions of purchase, BRK may never be held liable for bidders'/buyers' operating loss, loss of profits, other indirect losses or consequential loss.

### 17 PRIVACY POLICY

- 17.1 It is important to BRK to ensure confidentiality and security regarding the bidder's/buyer's personal information. The privacy policy can be found on [bruun-rasmussen.dk](http://bruun-rasmussen.dk).

### 18 COMPLAINTS, DISPUTE RESOLUTION AND APPLICABLE LAW

- 18.1 BRK can always be contacted if the bidder/buyer has a complaint.
- 18.2 If the dispute cannot be resolved, the consumer can submit a complaint to the Complaint Resolution Centre, Nævnenes Hus, Toldboden 2, 8800 Viborg, Denmark, email: [naevne-neshus.dk](mailto:naevne-neshus.dk). Consumers residing in another EU country than Denmark can submit their complaint to the European Commission's Online Dispute Resolution platform via the website: <http://ec.europa.eu/odr>.
- 18.3 In Denmark, disputes must be brought before the City Court of Copenhagen, but see paragraphs 18.2. The mandatory rules on jurisdiction apply to consumer interests.

*Bruun Rasmussen Auctioneers*

*The above is an English translation of the Danish version of the Conditions of Purchase. In case of a dispute, only the Danish version of the present Conditions of Purchase of Bruun Rasmussen is valid.*



## ADDRESSES

### BRUUN RASMUSSEN AUCTIONEERS

#### COPENHAGEN – BREDGADE

BREDGADE 33, DK-1260 COPENHAGEN K  
+45 8818 1111 / [info@bruun-rasmussen.dk](mailto:info@bruun-rasmussen.dk)

#### COPENHAGEN – SUNDKROGSGADE

SUNDKROGSGADE 30, DK-2150 NORDHAVN  
+45 8818 1111 / [info@bruun-rasmussen.dk](mailto:info@bruun-rasmussen.dk)

#### GLOSTRUP

PAUL BERGSØES VEJ 20B, DK-2600 GLOSTRUP  
+45 8818 1111 / [info@bruun-rasmussen.dk](mailto:info@bruun-rasmussen.dk)

#### AARHUS

SØREN FRICHS VEJ 34D, DK-8230 ÅBYHØJ  
+45 8818 1100 / [aarhus@bruun-rasmussen.dk](mailto:aarhus@bruun-rasmussen.dk)

#### JYLLAND AND FYN

PETER BECK  
+45 8818 1186 / [pb@bruun-rasmussen.dk](mailto:pb@bruun-rasmussen.dk)

NICK MESSMANN  
+45 8818 1232 / [nic@bruun-rasmussen.dk](mailto:nic@bruun-rasmussen.dk)

ESBEN SKOV JENSEN  
+45 8818 1199 / [ej@bruun-rasmussen.dk](mailto:ej@bruun-rasmussen.dk)

#### REPRESENTATIVES

##### FRANCE AND BELGIUM

DITTE HERBORG KROGH · PARIS  
+33 6 6185 4564 / [dhk@bruun-rasmussen.dk](mailto:dhk@bruun-rasmussen.dk)

##### SOUTHERN FRANCE AND LUXEMBOURG

PETER KOCH  
+45 4045 3403 / [p.koch@bruun-rasmussen.dk](mailto:p.koch@bruun-rasmussen.dk)

##### GERMANY

NICK MESSMANN  
+45 8818 1232 / [nic@bruun-rasmussen.dk](mailto:nic@bruun-rasmussen.dk)

## CONTACT DIRECTLY

### KONTAKT DIREKTE

#### MAIN NUMBER

Bruun Rasmussen Auctioneers +45 8818 1111

#### ADMINISTRATION

Jakob Dupont, CEO +45 8818 1081  
[dupont@bruun-rasmussen.dk](mailto:dupont@bruun-rasmussen.dk)

#### CUSTOMER SERVICE

[kundeservice@bruun-rasmussen.dk](mailto:kundeservice@bruun-rasmussen.dk) +45 8818 1010  
[customerservice@bruun-rasmussen.dk](mailto:customerservice@bruun-rasmussen.dk) +45 8818 1010

#### COMMISSIONS

Lise Winther Wobido +45 8818 1013  
Anja Bering Hansen +45 8818 1028  
[bids@bruun-rasmussen.dk](mailto:bids@bruun-rasmussen.dk)

#### CATALOGUE REQUESTS

Kundeservice / Customer service +45 8818 1111

#### AUCTION GUIDANCE

Franziska Kampmann +45 8818 1026  
[fka@bruun-rasmussen.dk](mailto:fka@bruun-rasmussen.dk)

#### SHIPPING

[shipping@bruun-rasmussen.dk](mailto:shipping@bruun-rasmussen.dk) +45 8818 1055

#### VALUATION AND INFORMATION

##### VALUATION AT YOUR HOME

Henrik Schleppegrel +45 8818 1145  
[hsc@bruun-rasmussen.dk](mailto:hsc@bruun-rasmussen.dk)

Liselotte Toxværd Møller +45 8818 1234  
[ltm@bruun-rasmussen.dk](mailto:ltm@bruun-rasmussen.dk)

##### DECORATIVE ART, FURNITURE AND CARPETS

Ralph Lexner +45 8818 1161  
[rl@bruun-rasmussen.dk](mailto:rl@bruun-rasmussen.dk)

##### BOOKS

Sarah Kirpekar-Sauer +45 8818 1217  
[books@bruun-rasmussen.dk](mailto:books@bruun-rasmussen.dk)

##### CARPETS

Henrik Schleppegrel +45 8818 1145  
[hsc@bruun-rasmussen.dk](mailto:hsc@bruun-rasmussen.dk)

##### FURNITURE

Anders Fredsted +45 8818 1142  
[afr@bruun-rasmussen.dk](mailto:afr@bruun-rasmussen.dk)

##### PORCELAIN

Line Hjorth Langkjær +45 8818 1166  
[lla@bruun-rasmussen.dk](mailto:lla@bruun-rasmussen.dk)

##### SILVER

Heidi Schophuus Jensen +45 8818 1163  
[hsj@bruun-rasmussen.dk](mailto:hsj@bruun-rasmussen.dk)

##### ASIAN ART AND ANTIQUITIES

Alexandra Nilsson +45 8818 1164  
[ani@bruun-rasmussen.dk](mailto:ani@bruun-rasmussen.dk)

##### RUSSIAN ART

Martin Hans Borg +45 8818 1128  
[mhb@bruun-rasmussen.dk](mailto:mhb@bruun-rasmussen.dk)

##### 19TH CENTURY AND OLD MASTER PAINTINGS

Julie Arendse Voss +45 8818 1123  
[jav@bruun-rasmussen.dk](mailto:jav@bruun-rasmussen.dk)

Birte Stokholm +45 8818 1122  
[bst@bruun-rasmussen.dk](mailto:bst@bruun-rasmussen.dk)

Søren Kjerk Holmstrup +45 8818 11 27  
[skh@bruun-rasmussen.dk](mailto:skh@bruun-rasmussen.dk)

Sofie Normann Christensen +45 8818 11 25  
[snc@bruun-rasmussen.dk](mailto:snc@bruun-rasmussen.dk)

##### MODERN AND CONTEMPORARY ART

Niels Boe-Hauggaard +45 8818 1182  
[nbh@bruun-rasmussen.dk](mailto:nbh@bruun-rasmussen.dk)

Niels Raben +45 8818 1181  
[nr@bruun-rasmussen.dk](mailto:nr@bruun-rasmussen.dk)

##### MODERN DESIGN

Peter Kjølgaard Jensen +45 8818 1191  
[pkj@bruun-rasmussen.dk](mailto:pkj@bruun-rasmussen.dk)

Anna Widenborg +45 8818 1187  
[awi@bruun-rasmussen.dk](mailto:awi@bruun-rasmussen.dk)

##### MODERN DECORATIVE ART

Amalie Hansen +45 8818 1194  
[amh@bruun-rasmussen.dk](mailto:amh@bruun-rasmussen.dk)

##### THE ART OF LUXURY

FASHION  
Emma Marie Huus-Thomsen +45 8818 1179  
[eht@bruun-rasmussen.dk](mailto:eht@bruun-rasmussen.dk)

JEWELLERY  
Majbrit Haastrup Nielsen +45 8818 1178  
[mhn@bruun-rasmussen.dk](mailto:mhn@bruun-rasmussen.dk)

##### WRISTWATCHES

Frederik Plum +45 8818 1168  
[fp@bruun-rasmussen.dk](mailto:fp@bruun-rasmussen.dk)

##### WINE

Thomas Rosendahl Andersen +45 8818 1206  
[tra@bruun-rasmussen.dk](mailto:tra@bruun-rasmussen.dk)

##### COINS

Michael Märcher +45 8818 1202  
[mm@bruun-rasmussen.dk](mailto:mm@bruun-rasmussen.dk)

##### STAMPS

Christian Grundtvig +45 8818 1214  
[cg@bruun-rasmussen.dk](mailto:cg@bruun-rasmussen.dk)

##### ARMS, ARMOUR AND SPORTING GUNS

Ralph Lexner +45 8818 1161  
[rl@bruun-rasmussen.dk](mailto:rl@bruun-rasmussen.dk)

## COMMISSION BIDS

### KOMMISSIONSBUD

It is possible to leave commission bids if you can not be present at the auction yourself. This service is free of charge.

When leaving a commission bid, you are instructing our customer service to bid up to a specified amount on your behalf.

The situation can occur that another buyer has already bid the same as you were prepared to. Are you then willing to bid further? If not the lot will be sold to another buyer.

If you do not wish to exceed your bid then write "Max", for maximum, next to the amount. You can also allow us to raise your bid by approx. 15% or approx. 25%.

The hammer price may be higher or lower than the estimated price, so it is possible to buy below the estimate. Bruun Rasmussen will always buy at the lowest price possible, as if you yourself had been present at the auction.

All commission bids are strictly confidential.

Commission bids must be submitted no later than **24 hours** prior to the start of the auction.

#### HOW TO MAKE A COMMISSION BID:

Complete the commission form with all pertinent information.

Indicate the lot number.

Indicate the amount you are prepared to bid.

Should this amount be the absolute maximum, please write "Max" in the appropriate column.

You can also allow us to bid by up to approx. 15% or approx. 25% more by indicating so.

Sign the commission form and make sure that Bruun Rasmussen receives it **24 hours** prior to the start of the auction.

If the information should be insufficient, Bruun Rasmussen can abstain from bidding. Bruun Rasmussen can not be held responsible for error in bidding or failure to execute bids.

#### INTERNET:

Commission bids can be submitted via website [bruun-rasmussen.dk](http://bruun-rasmussen.dk) directly from the page with the item you want to submit a bid for.

Deadline for submissions of bids via the website is **3 hours** prior to the start of the auction.

Submitted bids are shown under "Your bids" when you are logged in. Please contact technical support on +45 8818 1114 for questions about the registration and submission of bids on the website.

For additional information, please consult "Conditions of Purchase" §1.

#### TELEPHONE BIDDING:

Should you wish to bid at auction by telephone, please inform Bruun Rasmussen of your name and telephone number, as well as which catalogue numbers you are interested in, no later than **3 hours** prior to the start of the auction. You will then be contacted shortly before the relevant lot comes under the hammer, thereby allowing you to participate without being in the auction room yourself.

For additional information, please consult "Conditions of Purchase" §1.

Det er muligt at afgive kommissionsbud, hvis De ikke selv kan være til stede på auktionens dag. Denne service er gratis.

Når De afgiver en kommission, beder De vores kundeservice på Deres vegne byde op til et af Dem bestemt beløb i hammerslag.

Der kan opstå den situation, at en anden køber allerede har budt det beløb, som De ønsker at afgive. Er De da villig til at gå et bud højere eller er De indforstået med at nummeret sælges til anden side?

Ønsker De ikke at byde højere så skriv "Max" ud for beløbet. Er De i tvivl om hvor højt De vil byde, kan De hæve budet med op til ca. 15% eller ca. 25%.

Salgsprisen kan blive højere eller lavere end vurderingen, så der er også mulighed for at købe til under den angivne vurdering. Vor kundeservice køber altid så billigt som muligt til Dem, som havde De selv været tilstede på auktionen.

Alle kommissioner behandles strengt fortroligt.

Kommissionsbud skal være Bruun Rasmussen i hænde senest **24 timer** før auktionens start.

#### SÅDAN BYDER DE:

Udfyld blanketten kommissionsbud med alle oplysninger.

Angiv katalognummer.

Angiv beløbet De ønsker at byde.

Er dette Deres absolutte maximum bedes De anføre "Max" i kolonnen.

De kan også forhøje Deres bud med henholdsvis ca. 15% eller ca. 25%, ved at indikere dette i kolonnen.

De bedes underskrive kommissionsblanketten og sikre Dem, at Bruun Rasmussen modtager den senest **24 timer** før auktionens start.

Hvis Deres oplysninger ikke er tilstrækkelige, kan Bruun Rasmussen undlade at byde for Dem, ligesom Bruun Rasmussen ikke kan gøres ansvarlig for fejl ved budgivningen.

#### INTERNET:

Kommissionsbud kan afgives på hjemmesiden [bruun-rasmussen.dk](http://bruun-rasmussen.dk) direkte fra siden med den effekt, De ønsker at byde på.

Seneste afgivelse af bud via hjemmesiden er **3 timer** før auktionens start.

Afgivne bud kan ses på hjemmesiden under "Deres bud", når de er logget ind. Kontakt teknisk support på 8818 1114 for spørgsmål om registrering og budgivning via internettet.

For yderligere information, se "Købskonditioner", §1.

#### TELEFONBUD:

Såfremt De ønsker at byde pr. telefon, bedes De oplyse Bruun Rasmussen Deres navn og telefonnummer samt hvilke katalognumre, De ønsker at byde på, senest **3 timer** før auktionens start. De vil så blive ringet op kort før, den aktuelle vare kommer under hammeren, og De kan på denne måde deltage i auktionen uden selv at være til stede.

For yderligere information, se "Købskonditioner" på [bruun-rasmussen.dk](http://bruun-rasmussen.dk) under "Guide".

## COMMISSION BIDS

### KOMMISSIONSBUD

Skal være Bruun Rasmussen i hænde senest **24 timer** før auktionens start.

*Must be submitted no later than 24 hours prior to the start of the auction.*

AUKTION NR AUCTION NO: **915**

Navn Name: \* .....

Adresse Address: \* .....

Postnr./by City: \* .....

Land Country: \* ..... Fax: .....

Tel: \* .....

e-mail: ..... CVR-nr. VAT No.: .....

Bank: ..... Konto nr. Acct. No.: .....

Adresse Address: .....

Postnr./By City: ..... Land Country: .....

Tel: ..... Kontaktperson Contact: .....

Obligatoriske felter er mærket med en stjerne \* *Mandatory fields are marked with an asterisk \**

Undertegnede giver hermed fuldmagt til Bruun Rasmussen Kunstauktioner A/S om på mine vegne at købe nedennævnte katalognumre så fordelagtigt som muligt, inden for det af mig anførte beløb, i hammerslag. *I hereby request that Bruun Rasmussen bid on my behalf on the following lots up at the prices indicated below.*

Undertegnede har udfyldt ovennævnte med de ønskede oplysninger, samt har accepteret købskonditionerne. *The undersigned has supplied the required information and agrees to be bound by the conditions of purchase.*

Signatur: \* ..... B.R. kunde-nr. Client No.: .....

Jeg ønsker at modtage salgsresultater på de emner jeg har budt på via email  dagligt  efter auktion  
 *I wish to receive sales results on the items I have been bidding on via e-mail*  *every day*  *after the auction*

på e-mail adressen *on this e-mail address:* .....

Katalog nr. Lot. No.	Beskrivelse Description	Bud kr. Bid DKK	Max	+15%	+25%

#### BRUUN RASMUSSEN KUNSTAUKTIONER A/S

Bredgade 33 · DK-1260 København K · Tel +45 8818 1111 · Fax +45 8818 1112 · [bids@bruun-rasmussen.dk](mailto:bids@bruun-rasmussen.dk) · [bruun-rasmussen.dk](http://bruun-rasmussen.dk)

Fortsættes næste side *Please turn over*









THE ART OF LUXURY

